



FCC TEST REPORT

For

Mobile Command (Viper)

Model Number: 37041



Reference No. : CT10042061-S-F

FCC ID : V9Q-37040F27

Applicant : Toy State International Ltd.

Address : 19/F., One Peking, No.1 Peking Road, Tsimshatsui, Kowloon,
Hong Kong

Date of Test : April 22, 2010 to April 23, 2010

Date of Issue : April 23, 2010

Prepared By : Shenzhen CCE Test Electronic Co., Ltd.

Test Result : Pass



2 Contents

	Page
1 COVER PAGE.....	1
2 CONTENTS.....	2
3 TEST SUMMARY.....	3
4 TEST REPORT DECLARATION	4
5 TEST LABORATORY AND FACILITY INFROMATION.....	5
5.1 TEST LOCATION.....	5
6 TEST EQUIPMENT USED.....	6
7 RADIATION EMISSION TEST.....	7
7.1 TEST EQUIPMENT.....	7
7.2 MEASUREMENT UNCERTAINTY.....	7
7.3 TEST PROCEDURE	7
7.4 SPECTRUM ANALYZER SETUP.....	8
7.5 CORRECTED AMPLITUDE & MARGIN CALCULATION	8
7.6 TEST ARRANGEMENT.....	8
7.7 RADIATED EMISSIONS LIMIT.....	8
7.8 RADIATED EMISSION DATA	9
8 ANTENNA REQUIREMENT.....	10
9 OCCUPIED BANDWIDTH	11
10 TEST SETUP PHOTOS	12
11 EUT PHOTOS	13
11.1 APPEARANCE VIEW OF EUT	13
11.2 APPEARANCE VIEW OF EUT	13
11.3 FRONT VIEW OF PCB.....	14
11.4 REAR VIEW OF PCB.....	14
11.5 OPEN VIEW OF EUT.....	15
12 FCC ID LABEL.....	16



3 Test Summary

Test Items	Test Requirement	Test Method	Limit / Severity	Result
Mains Terminal Disturbance Voltage, 150kHz to 30MHz	FCC Part 15	ANSI C63.4: 2009	N/A	N/A
Radiation Emission, 25MHz to 1GHz	FCC Part 15	ANSI C63.4: 2009	N/A	PASS
Occupied Bandwidth	FCC Part 15	ANSI C63.4: 2009	N/A	PASS

Note : denote that for more details of the EUT, please refer to the relating test items as below .

Remark : the methods of measurement in all the test items were according to the FCC Public Notice DA 00-705 .



4 Test Report Declaration

Applicant : Toy State International Ltd.

Address : 19/F., One Peking, No.1 Peking Road, Tsimshatsui, Kowloon,
Hong Kong

Manufacturer : Shen Zhen Nan Ling Toys Products Co., Ltd.

Address : 132 Busha Road, Nanling Village, Buji Town,
Longgang, Shenzhen, Canton 518114, China

Product Name : Mobile Command (Viper)

Model No. : 37041

Power Supply : DC 4.5V(3 pcs 1.5V AA Battery)

Frequency Range : 27.145 MHz

Standard : FCC Part 15.227

Temperature : 25.5 °C

Humidity : 51 % RH

Barometric Pressure : 1012 mbar

Test Engineer : *Mike Chen*

Reviewed By : *Tom. yao*



5 Test Laboratory and Facility Information

The test facility is recognized, certified, or accredited by the following organizations:

- **FCC – Registration No.: 880581**

Waltek Services(Shenzhen) Co., Ltd. EMC Laboratory has been registered and fully described in a report filed with the (FCC) Federal Communications Commission. The acceptance letter from the FCC is maintained in our files. Registration 880581, June 24, 2008.

5.1 Test Location

All Emissions tests were performed at:

1/F, Fukangtai Building, West Baima Rd., Songgang Street, Baoan District,
Shenzhen 518105, Guangdong, China.



6 Test Equipment Used

Equipment Name	Manufacturer Model	Equipment No	Internal No	Specification	Cal. Date	Due Date	Cert. No	Uncertainty
EMC Analyzer	Agilent/ E7405A	MY451149 43	W2008001	9k-26.5GHz	Aug-09	Aug-10	Wws200 81596	±1dB
Trilog Broadband Antenne 30-3000 MHz	SCHWARZB ECK MESS- ELEKTROM / VULB9163	336	W2008002	30-3000 MHz	Aug-09	Aug-10		±1dB
Broadband Preamplifier 0.5-18 GHz	SCHWARZB ECK MESS- ELEKTROM / BBV 9718	9718-148	W2008004	0.5-18GHz	Aug-09	Aug-10		±1.2dB
10m Coaxial Cable with N-male Connectors usable up to 18GHz,	SCHWARZB ECK MESS- ELEKTROM / AK 9515 H	-	-	-	Aug-09	Aug-10		-
10m 50 Ohm Coaxial Cable with N-plug, individual length, usable up to 3(5)GHz, Connector	SCHWARZB ECK MESS- ELEKTROM / AK 9513				Aug-09	Aug-10		
Positioning Controller	C&C LAB/ CC-C-IF				N/A	N/A		
Color Monitor	SUNSPON/ SP-14C				N/A	N/A		
Test Receiver	ROHDE&SC HWARZ/ ESPI	101155	W2005001	9k-3GHz	Aug-09	Aug-10	Wws200 80942	±1dB
EMI Receiver	Beijingkehua n	KH3931		9k-1GHz	Aug-09	Aug-10		
Active Loop Antenna Charger 10kHz- 30MHz	Beijing Dazhi / ZN30900A	-	-	10kHz- 30MHz	Aug-09	Aug-10		±1dB



7 Radiation Emission Test

Test Requirement:	FCC Part 15.227
Test Method:	Based on ANSI 63.4:2009
Test Date:	April 22, 2009
Frequency Range:	25MHz to 1GHz
Measurement Distance:	3m
Detector:	Peak for pre-scan (120kHz resolution bandwidth) Quasi-Peak if maximised peak within 6dB of limit

7.1 Test Equipment

Please refer to Section 5 this report.

7.2 Measurement Uncertainty

The EUT is placed on a turntable, which is 0.8 meter above ground. The turntable can rotate 360 degrees to determine the position of the maximum emission level. EUT is set 3 meters away from the receiving antenna, which is mounted on an antenna tower. The antenna can move up and down between 1 to 4 meters to find out the maximum emission level. Broadband antenna is used as a receiving antenna. Both horizontal and vertical polarization of the antenna is set on test. Based on ANSI C63.4:2009, The Treatment of Uncertainty in EMC Measurements, the best estimate of the uncertainty of a radiation emissions measurement at Waltek EMC Lab is ± 2.9 dB.

7.3 Test Procedure

1. New battery were installed in the equipment under test for radiated emissions test.
2. This is a handheld device, The radiation emission should be tested under 3-axes position (lying, side and stand), After pre-test, It was found that the worse radiation emission was get at the lying position.
3. Maximizing procedure was performed on the six (6) highest emissions to ensure EUT is compliant with all installation combinations.
4. All data was recorded in the peak and average detection mode.
5. The EUT was under normal mode during the final qualification test and the configuration was used to represent the worst case results.
6. For below 30MHz, a loop antenna with its vertical plane is placed 3m from the EUT and rotated about its vertical axis for maximum response at each azimuth about the EUT. And the centre of the loop shall be 1m above the ground.
7. The device was rotated through three orthogonal axes to determine which attitude and configuration produce the highest emission during measurement.



7.4 Spectrum Analyzer Setup

According to FCC Part 15.227, the system was tested to 1000 MHz.

- Start Frequency25 MHz
- Stop Frequency 1000 MHz
- Sweep Speed Auto
- IF Bandwidth..... 100 kHz
- Video Bandwidth 100KHz
- Quasi-Peak Adapter Bandwidth 120 kHz
- Quasi-Peak Adapter Mode.....Normal
- Resolution Bandwidth 100KHz

7.5 Corrected Amplitude & Margin Calculation

The Corrected Amplitude is calculated by adding the Antenna Factor and Cable Factor, and subtracting the Amplifier Gain from the Amplitude reading. The basic equation is as follows:

$$\text{Corr. Ampl.} = \text{Indicated Reading} + \text{Antenna Factor} + \text{Cable Factor} - \text{Amplifier Gain}$$

7.6 Test Arrangement

The arrangement of the equipment is installed to meet the standards and operating in a manner, which tends to maximize its emission characteristics in a normal application. The detailed information refers to test picture.

7.7 Radiated Emissions Limit

Frequency(MHZ)	Distance(m)	Field strength(dBuV/m)
Fundamental Frequency	3	80
30-88	3	40.0
88-216	3	43.5
216-960	3	46.0
Above 960	3	54.0



7.8 Radiated Emission Data

Test Mode: Continuously transmit

Test Result: PASS

Frequency (MHz)	Detector	Antenna Polarization	Emission Level (dBuV/m)	FCC 15 Subpart C Limit (dBuV/m)	Margin (dB)	Antenna Height (m)	Turntable Angle (°)
27.16	Quasi-peak	Vertical	61.35	80	-13.41	1.3	180
27.16	Quasi-peak	Horizontal	58.69	80	-17.96	1.4	133
54.32	Quasi-peak	Horizontal	29.38	40	-21.46	1.2	142
81.48	Quasi-peak	Horizontal	28.32	40	-17.67	1.7	135
108.64	Quasi-peak	Horizontal	30.36	43.5	-16.56	1.6	162
135.8	Quasi-peak	Horizontal	31.98	43.5	-16.41	1.4	127
162.96	Quasi-peak	Horizontal	24.84	43.5	-24.56	1.5	130
190.12	Quasi-peak	Horizontal	31.35	43.5	-21.31	1.7	175
217.28	Quasi-peak	Horizontal	29.59	46	-19.74	1.4	124
244.44	Quasi-peak	Horizontal	27.49	46	-18.65	1.6	162
271.6	Quasi-peak	Horizontal	27.62	46	-21.3	1.4	125
54.32	Quasi-peak	Vertical	29.89	40	-23.99	1.3	120
81.48	Quasi-peak	Vertical	29.47	40	-15.43	1.4	142
108.64	Quasi-peak	Vertical	29.92	43.5	-17.92	1.3	130
135.8	Quasi-peak	Vertical	28.39	43.5	-17.88	1.1	145
162.96	Quasi-peak	Vertical	28.96	43.5	-23.99	1.4	130
190.12	Quasi-peak	Vertical	28.01	43.5	-21.63	1.6	135
217.28	Quasi-peak	Vertical	28.35	46	-22.31	1.4	120
244.44	Quasi-peak	Vertical	28.11	46	-18.79	1.6	165
271.6	Quasi-peak	Vertical	28.60	46	-20.66	1.6	0



8 Antenna Requirement

According to the FCC Part 15 Paragraph 15.203, an intentional radiator shall be designed to ensure that no antenna other than that furnished by the responsible party shall be used with the device. The use of a permanently attached antenna to the intentional radiator shall be considered sufficient to comply with the provisions of this section. This product has a permanent antenna, fulfill the requirement of this section



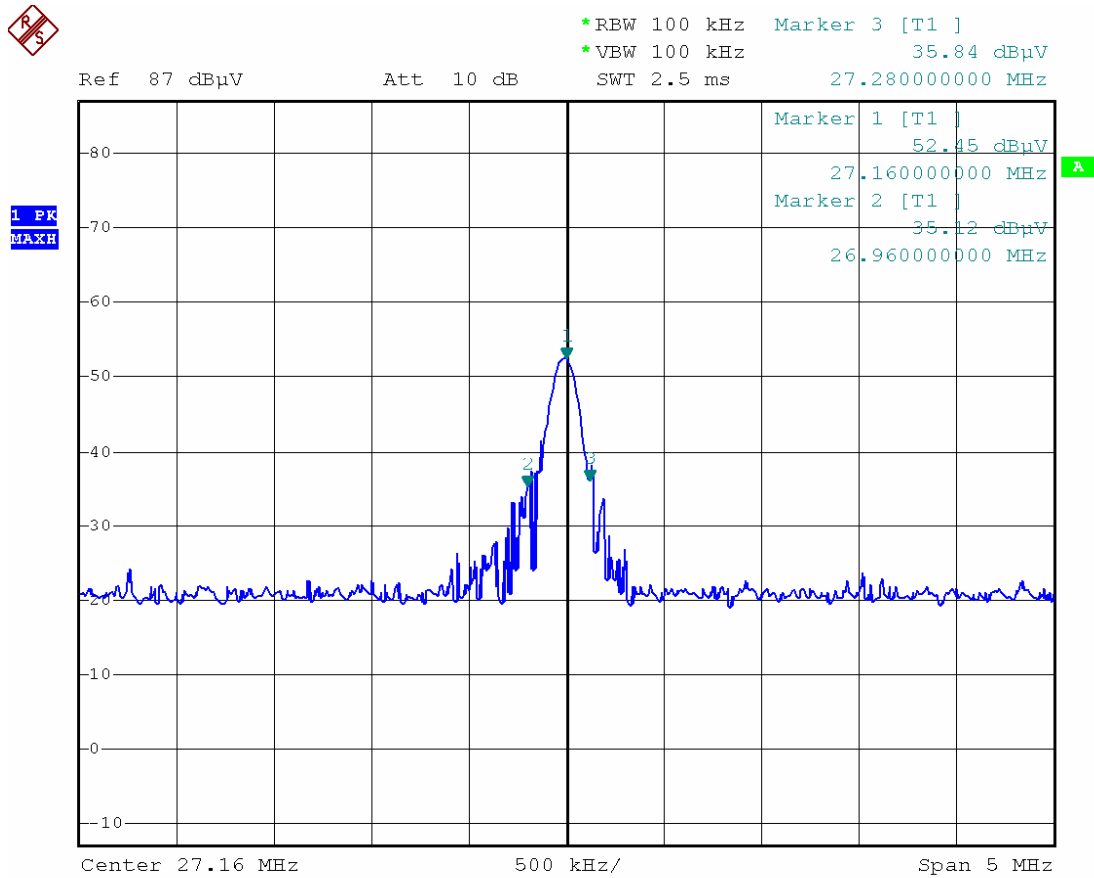
9 Occupied Bandwidth

Test Rule: FCC Part 15.227

Test Mode: Continuous transmit

Test Requirement: The field strength of any emissions which appear outside of the band shall not exceed the general radiated emission limits in section 15.209.

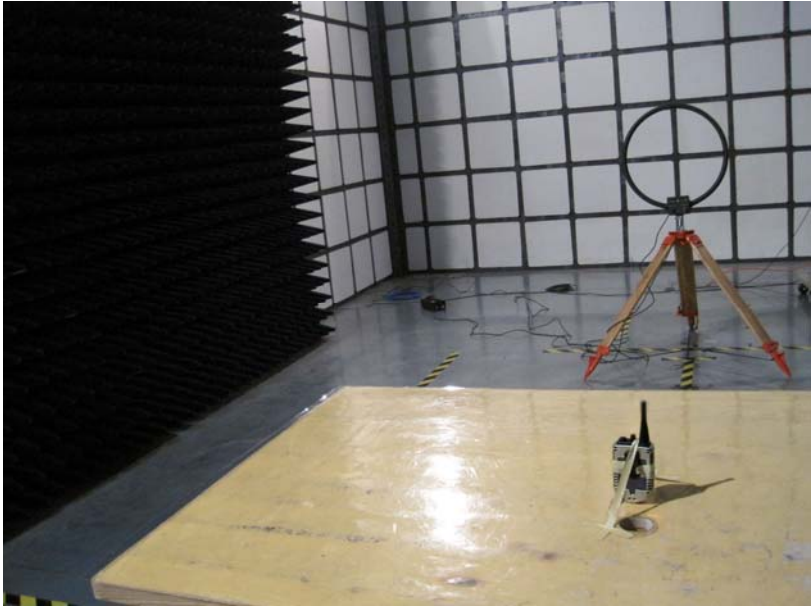
Test Result: Pass
Please refer to the following picture.





10 Test Setup Photos

Radiation Emission Test View





11 EUT Photos

11.1 Appearance View of EUT

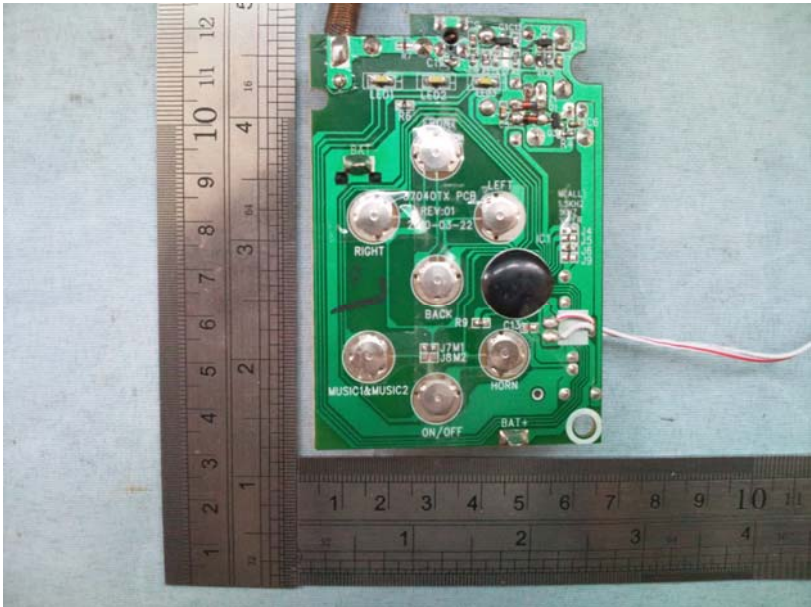


11.2 Appearance View of EUT

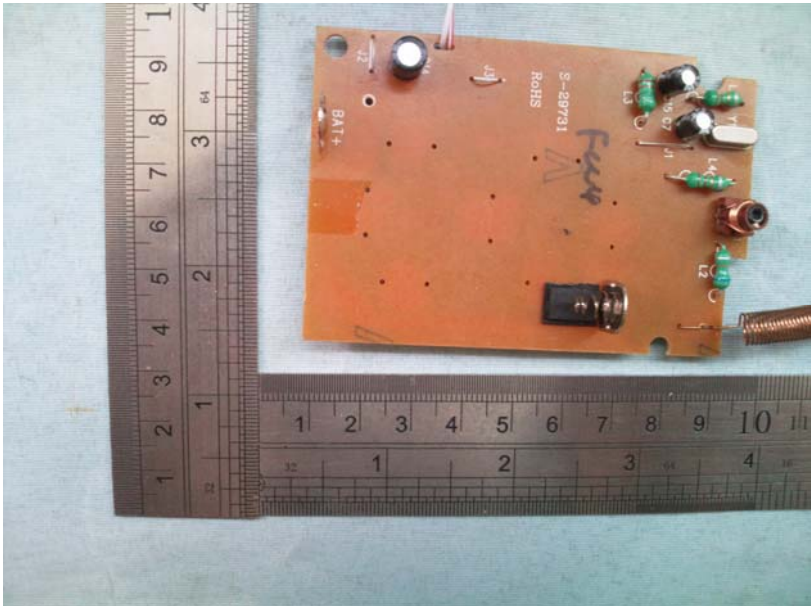




11.3 Front View of PCB

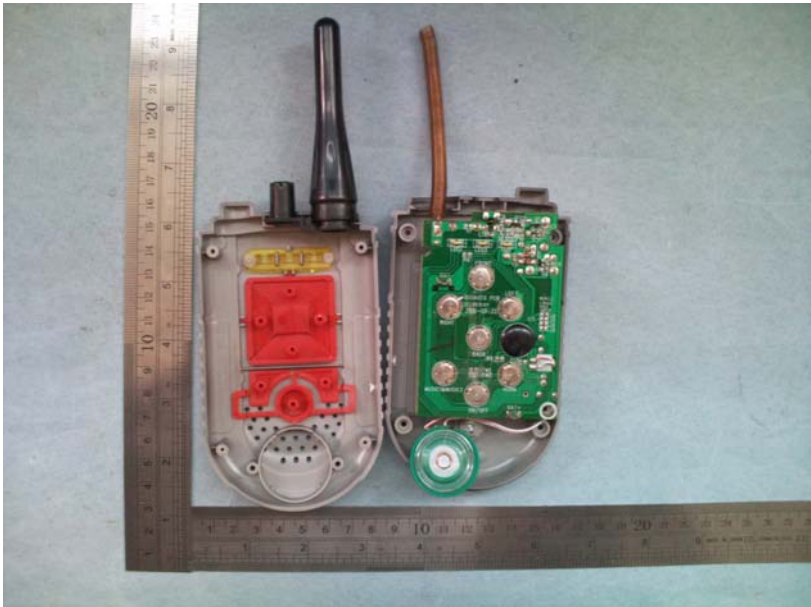


11.4 Rear View of PCB





11.5 Open View of EUT





12 FCC ID Label

This device complies with Part 15 of the FCC Rules. Operation is subject to the following two conditions:(1)this device may not cause harmful interference,and (2) this device must accept any interference received, including interference that may cause undesired operation.

Proposed FCC ID Label Location on the EUT

