

FCC ID : V8YFW638PC25000W

The data in pink column are measured b Agilent spectrum analyzer E4446A

The data in orange column are measured by Anritsu wideband power meter ML2495A

Channel bandwidth		5MHz		
Communication	5MHz / QPSK 1/2			
Channel (MHz)	Conducted power(dBm)			Peak to average ratio(dB)
	Average	Average	Peak	PAR
2505	21.51	21.51	30.06	8.54
2600	21.81	21.80	30.41	8.62
2685	22.28	22.27	30.13	7.85

Communication		5MHz / QPSK 3/4		
Channel (MHz)	Conducted power(dBm)			Peak to average ratio(dB)
	Average	Average	Peak	PAR
2505	21.46	21.46	29.83	8.37
2600	21.77	21.76	30.10	8.34
2685	22.23	22.23	29.97	7.74

Communication		5MHz / 16QAM 1/2		
Channel (MHz)	Conducted power(dBm)			Peak to average ratio(dB)
	Average	Average	Peak	PAR
2505	21.49	21.45	29.71	8.26
2600	21.76	21.76	29.95	8.20
2685	22.20	22.23	29.71	7.47

Communication		5MHz / 16QAM 3/4		
Channel (MHz)	Conducted power(dBm)			Peak to average ratio(dB)
	Average	Average	Peak	PAR
2505	21.41	21.41	29.47	8.06
2600	21.71	22.70	30.40	7.71
2685	22.18	22.18	29.69	7.52

FCC ID : V8YFW638PC25000W

The data in pink column are measured b Agilent spectrum analyzer E4446A

The data in orange column are measured by Anritsu wideband power meter ML2495A

Channel bandwidth		10MHz		
Communication	10MHz / QPSK 1/2			
Channel (MHz)	Conducted power(dBm)			Peak to average ratio(dB)
	Average	Average	Peak	PAR
2505	21.40	21.42	29.63	8.21
2600	20.86	20.87	29.44	8.57
2685	21.05	21.07	29.32	8.25

Communication	10MHz / QPSK 3/4			
Channel (MHz)	Conducted power(dBm)			Peak to average ratio(dB)
	Average	Average	Peak	PAR
2505	21.35	21.35	29.77	8.42
2600	20.83	20.86	29.50	8.64
2685	21.00	21.03	29.27	8.24

Communication	10MHz / 16QAM 1/2			
Channel (MHz)	Conducted power(dBm)			Peak to average ratio(dB)
	Average	Average	Peak	PAR
2505	21.31	21.33	29.87	8.54
2600	20.74	20.78	29.61	8.83
2685	20.98	20.98	29.37	8.39

Communication	10MHz / 16QAM 3/4			
Channel (MHz)	Conducted power(dBm)			Peak to average ratio(dB)
	Average	Average	Peak	PAR
2505	21.28	21.31	29.70	8.39
2600	20.75	20.75	29.60	8.85
2685	20.94	20.96	29.27	8.30

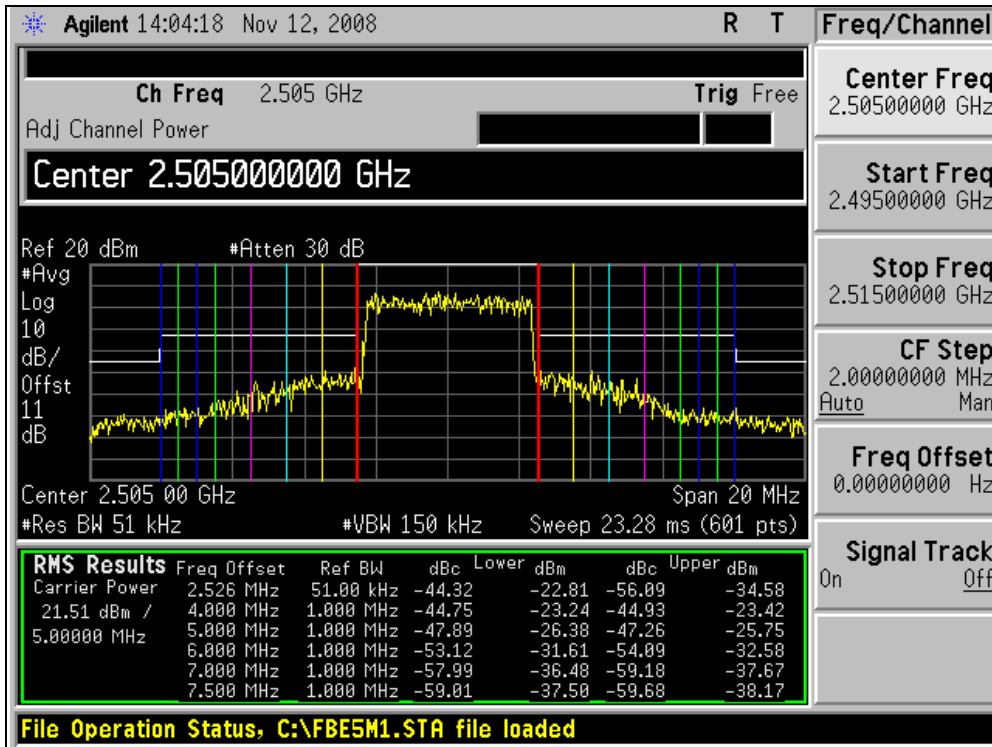


A D T

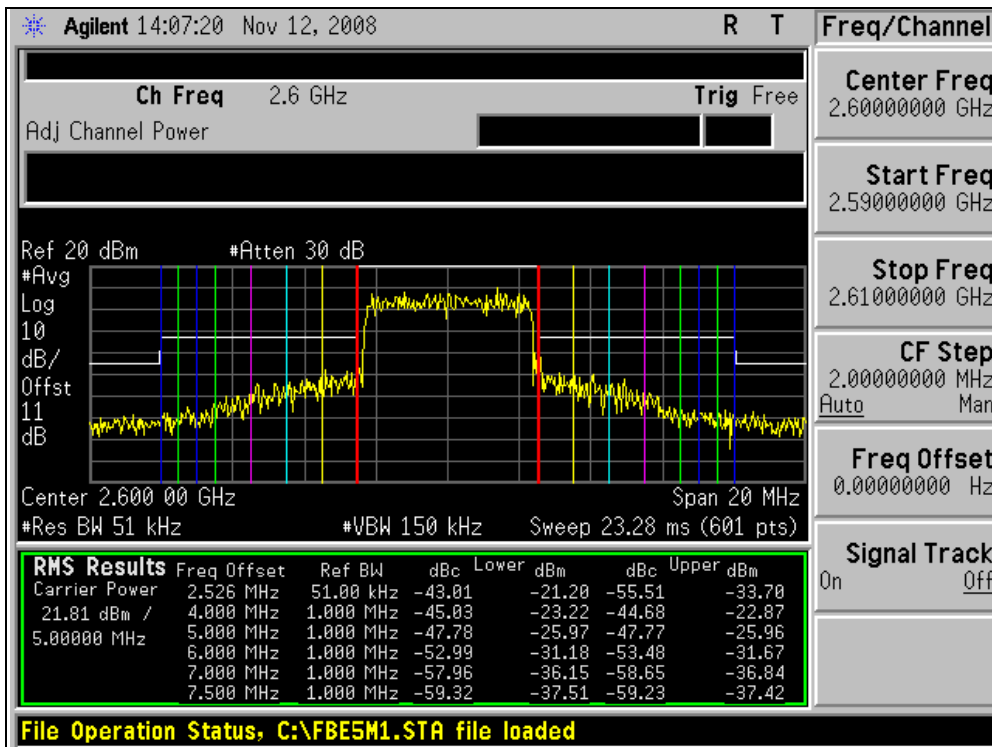
Channel power of 5MHz bandwidth

QPSK 1/2

2505MHz



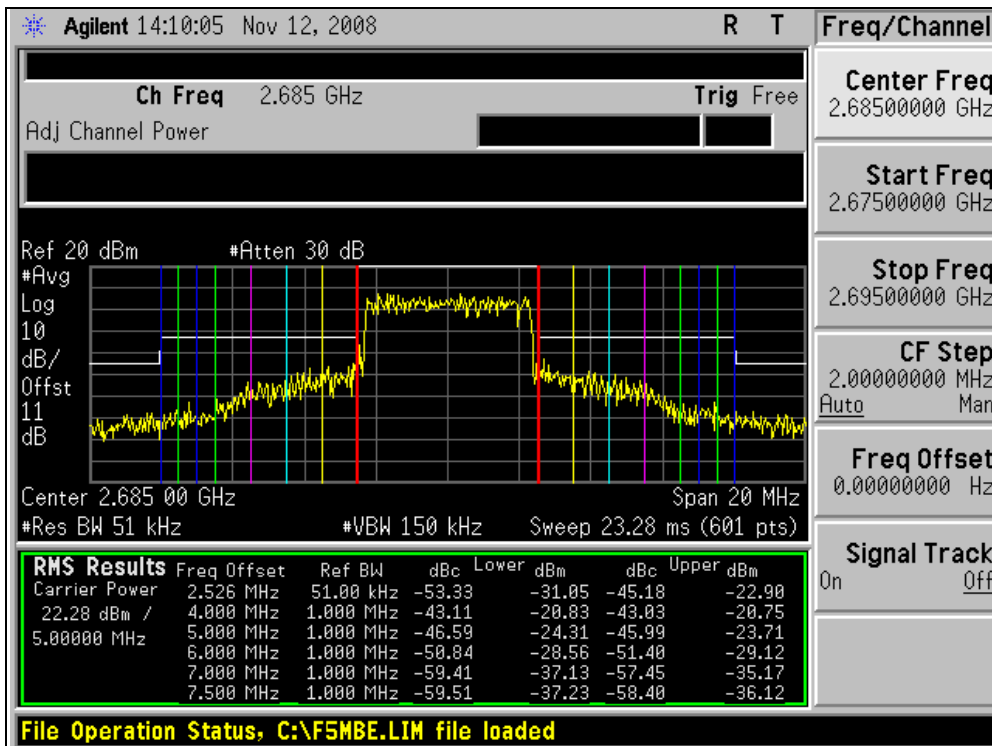
2600MHz



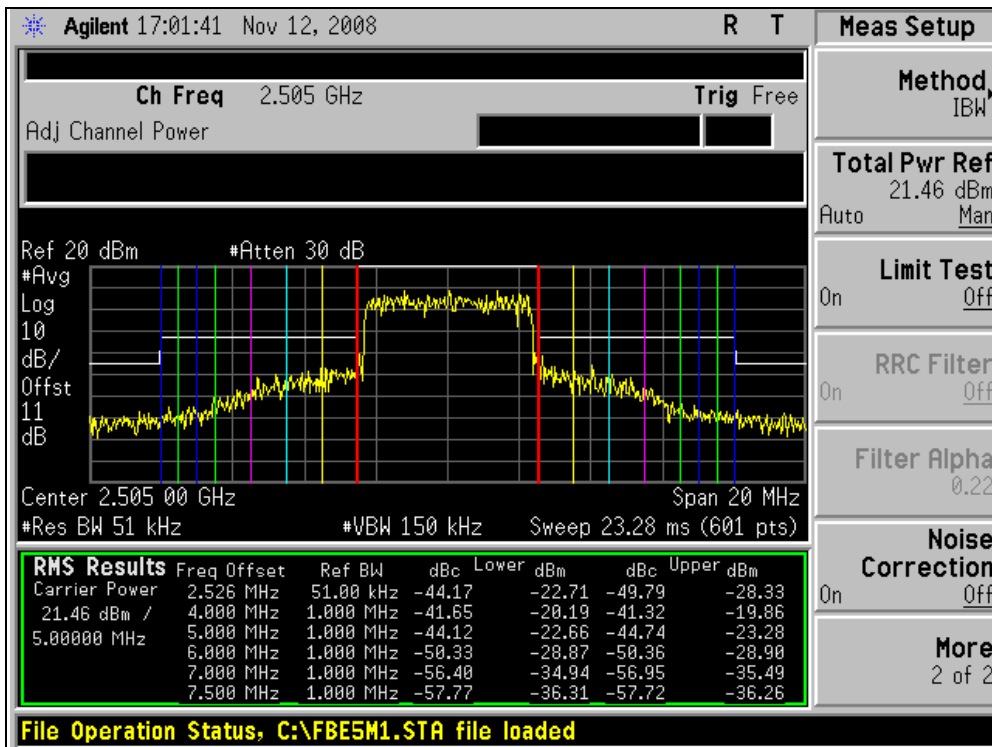


A D T

2685MHz



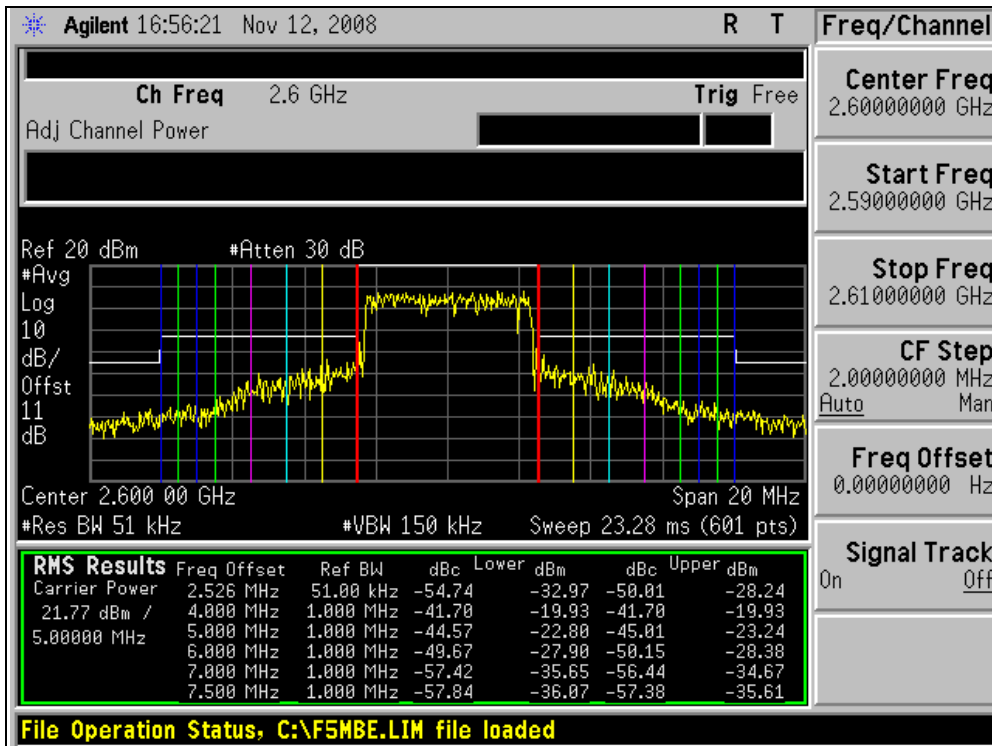
QPSK 3/4 2505MHz



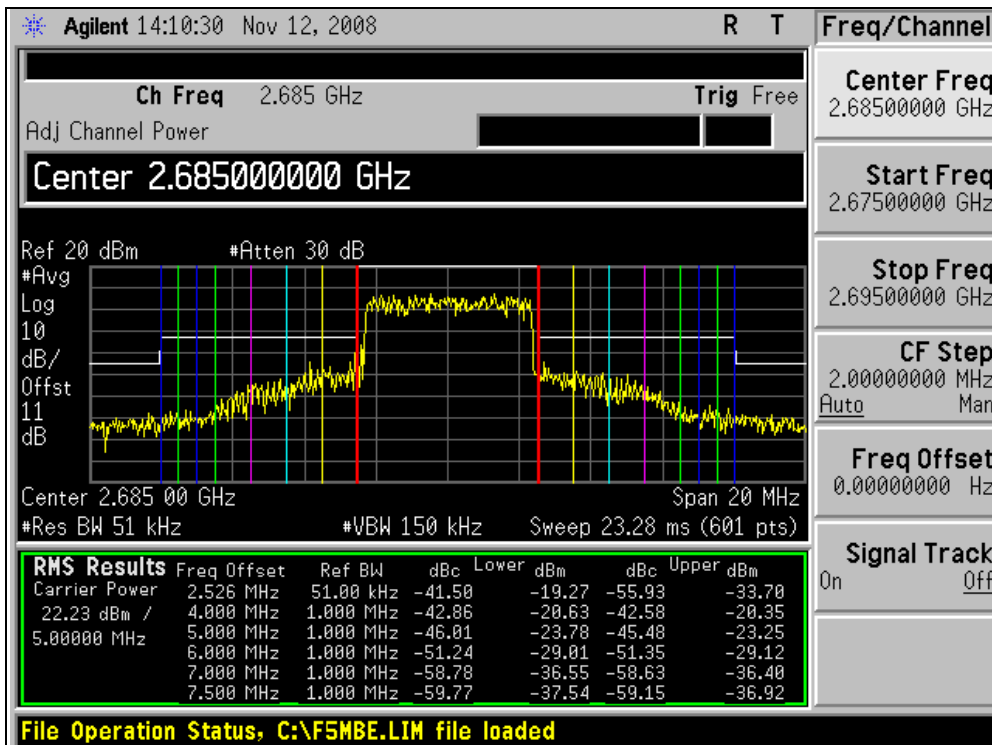


A D T

2600MHz



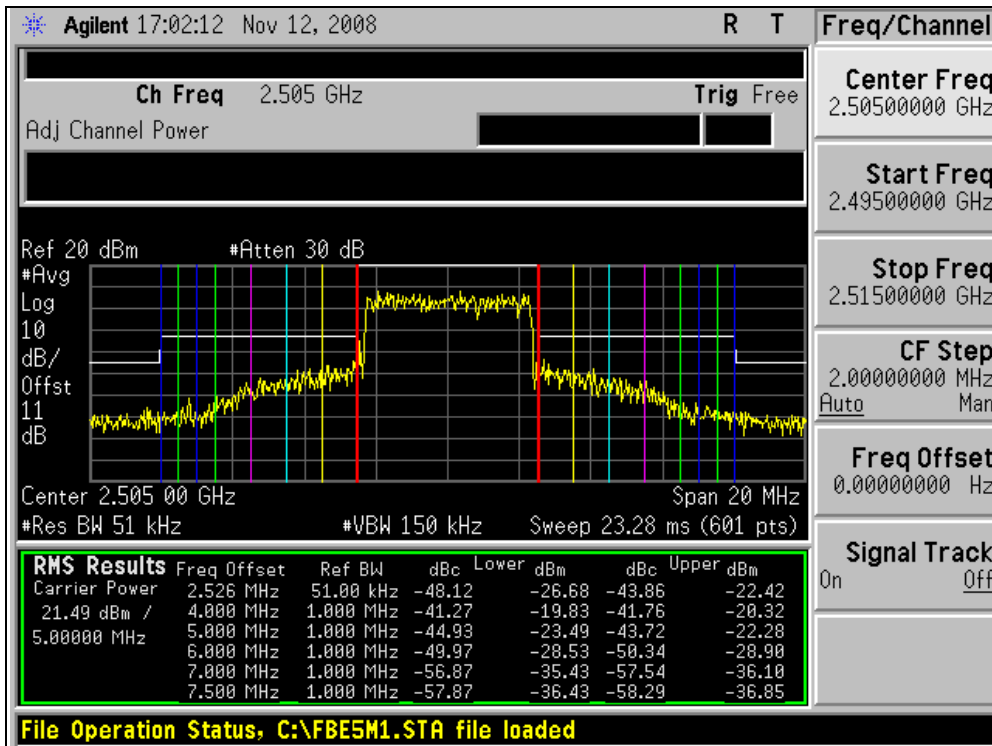
2685MHz



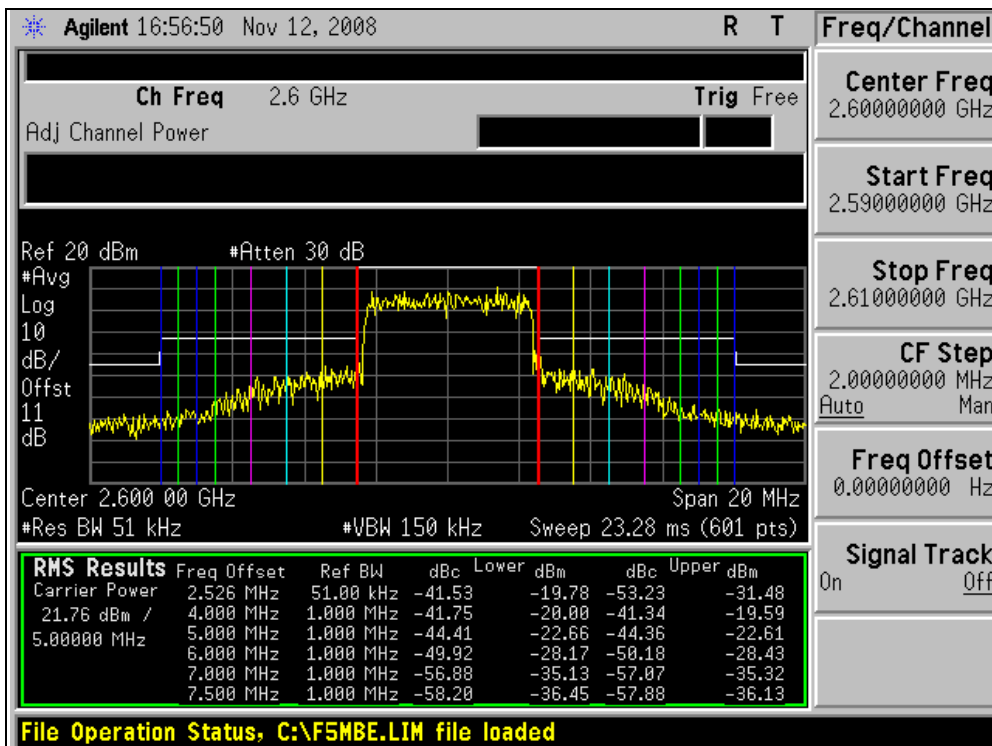


A D T

16QAM 1/2 2505MHz



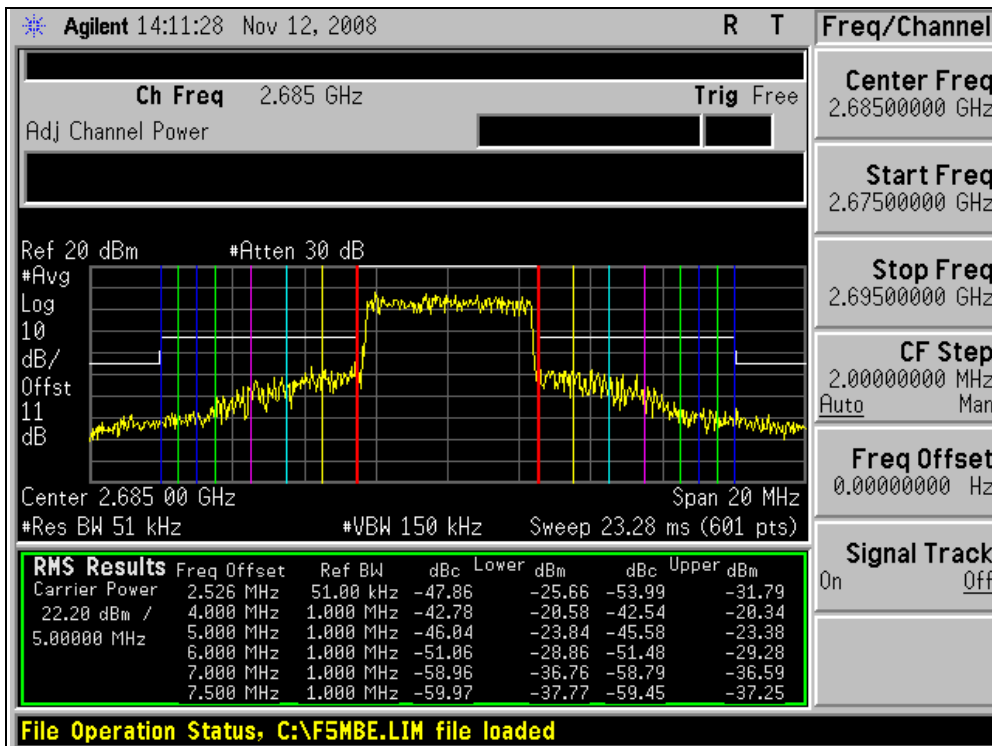
2600MHz



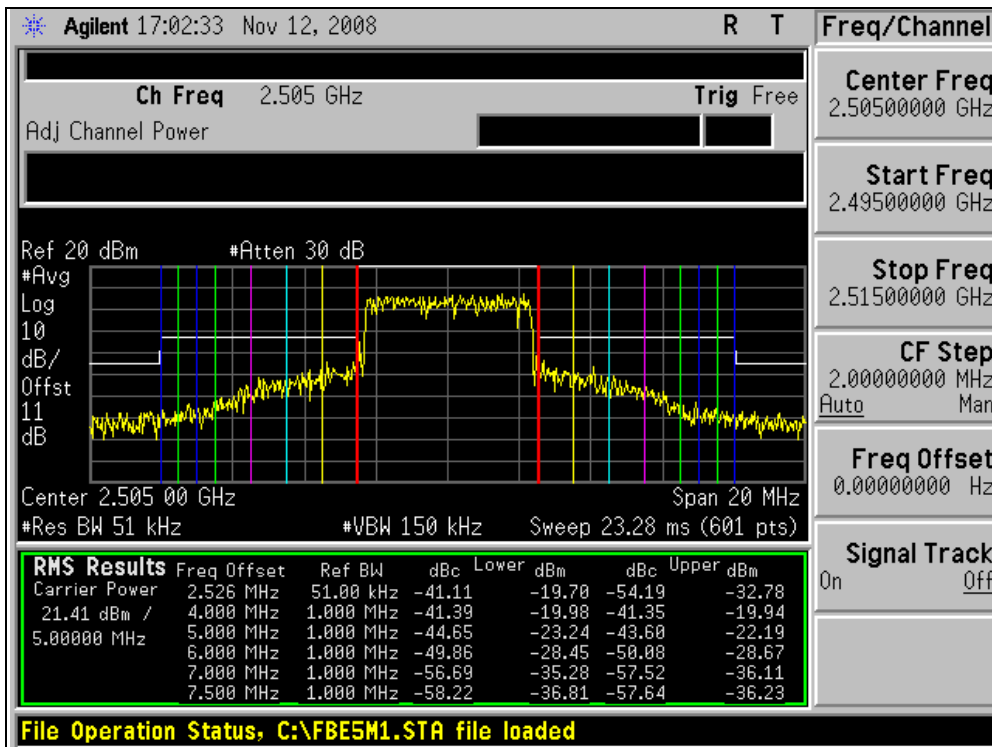


A D T

2685MHz



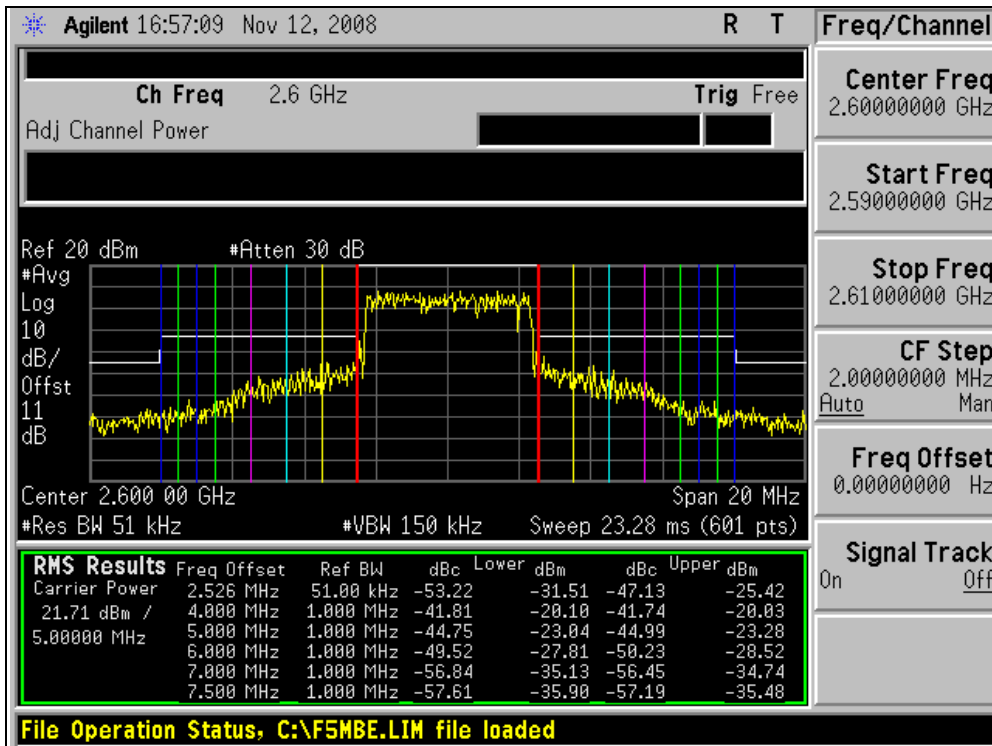
16QAM 3/4 2505MHz



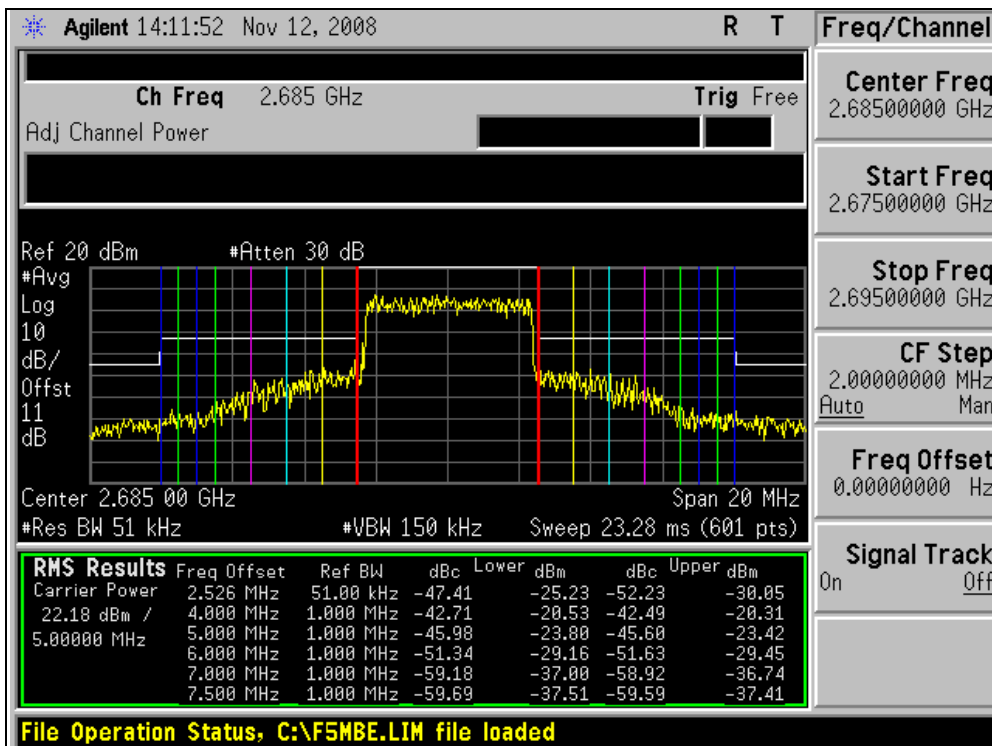


A D T

2600MHz



2685MHz

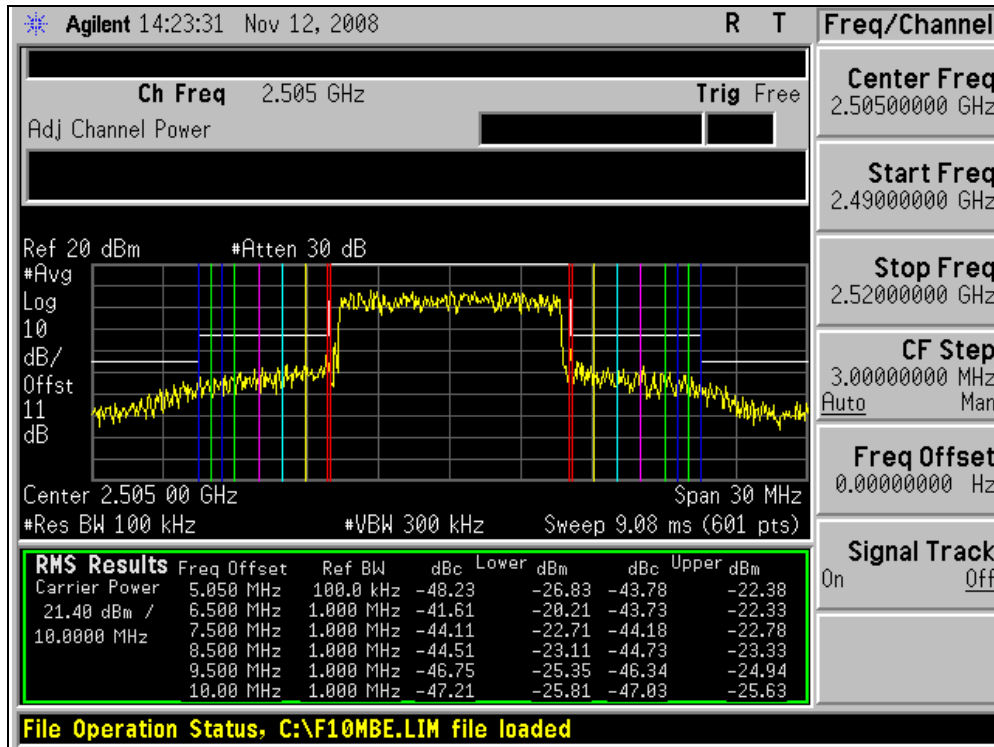




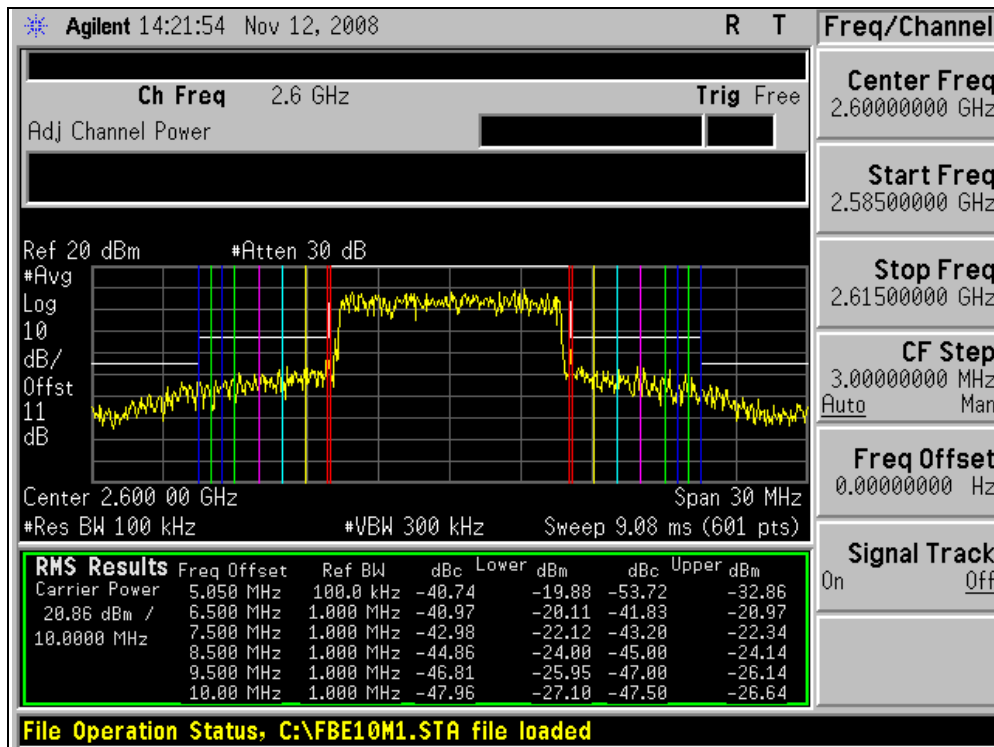
A D T

Channel power of 10MHz bandwidth

QPSK 1/2
2505MHz



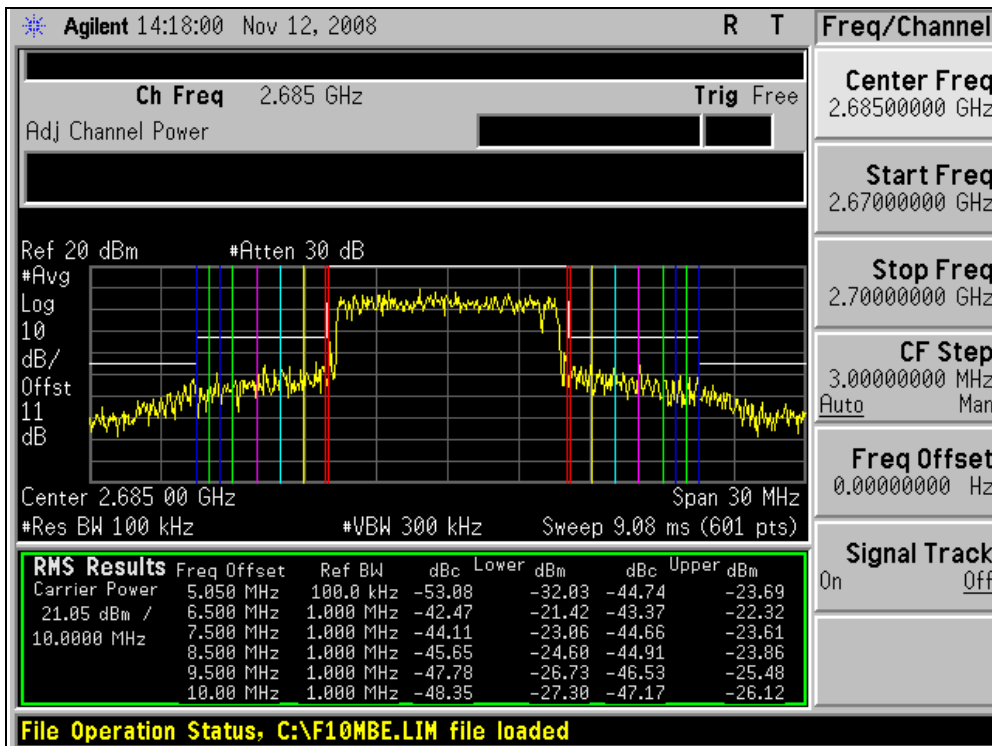
2600MHz



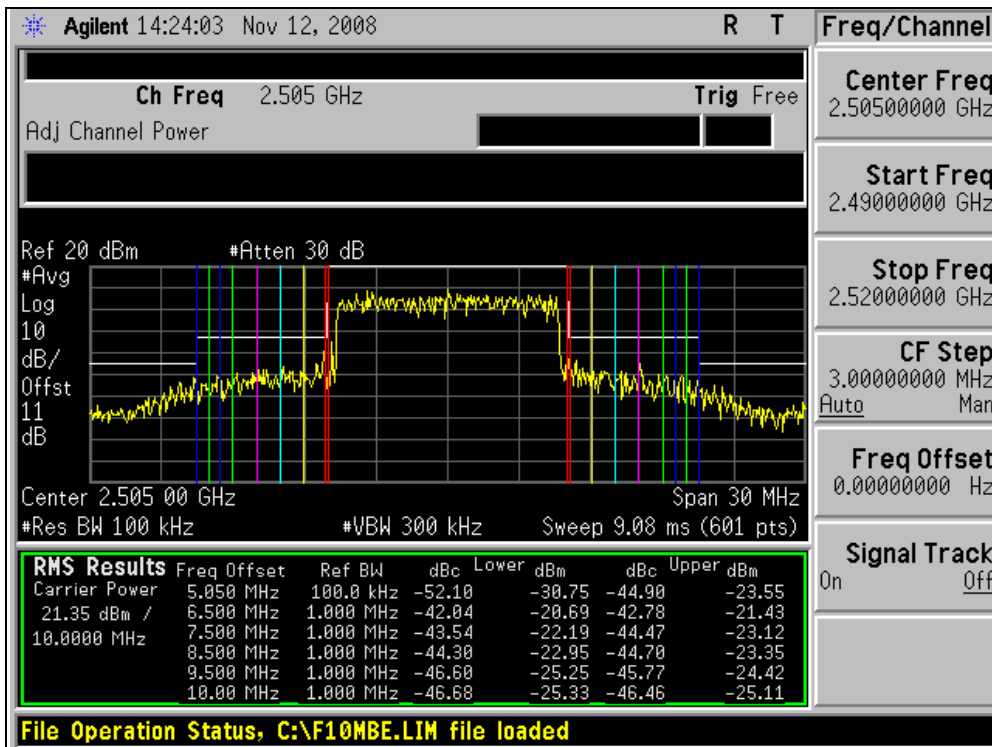


A D T

2685MHz



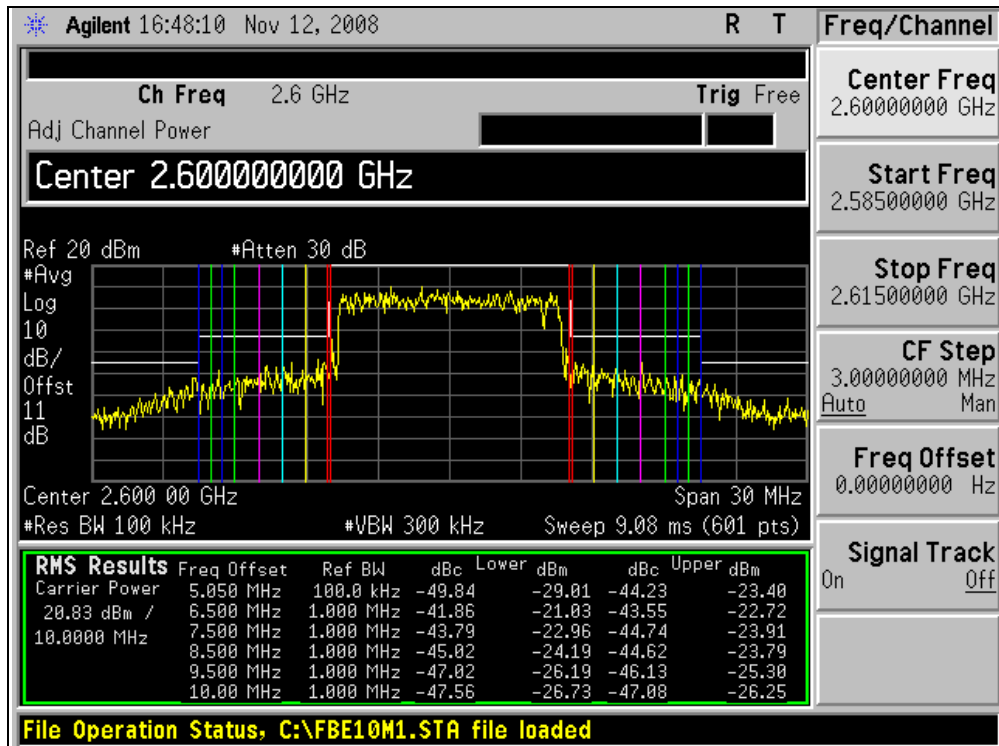
QPSK 3/4
2505MHz



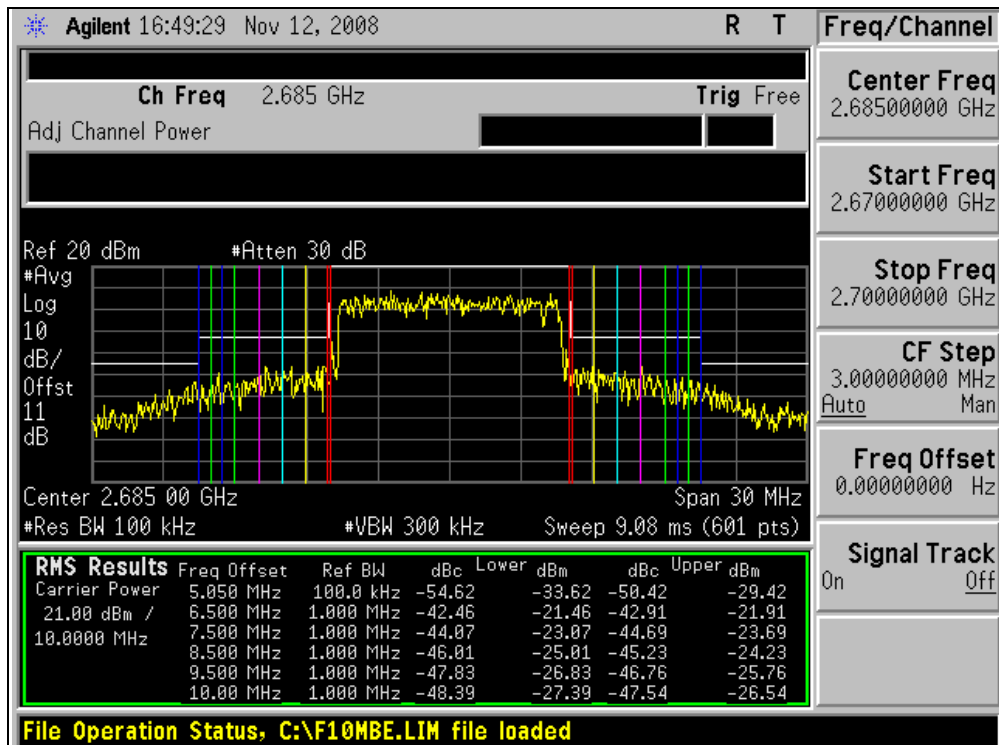


A D T

2600MHz



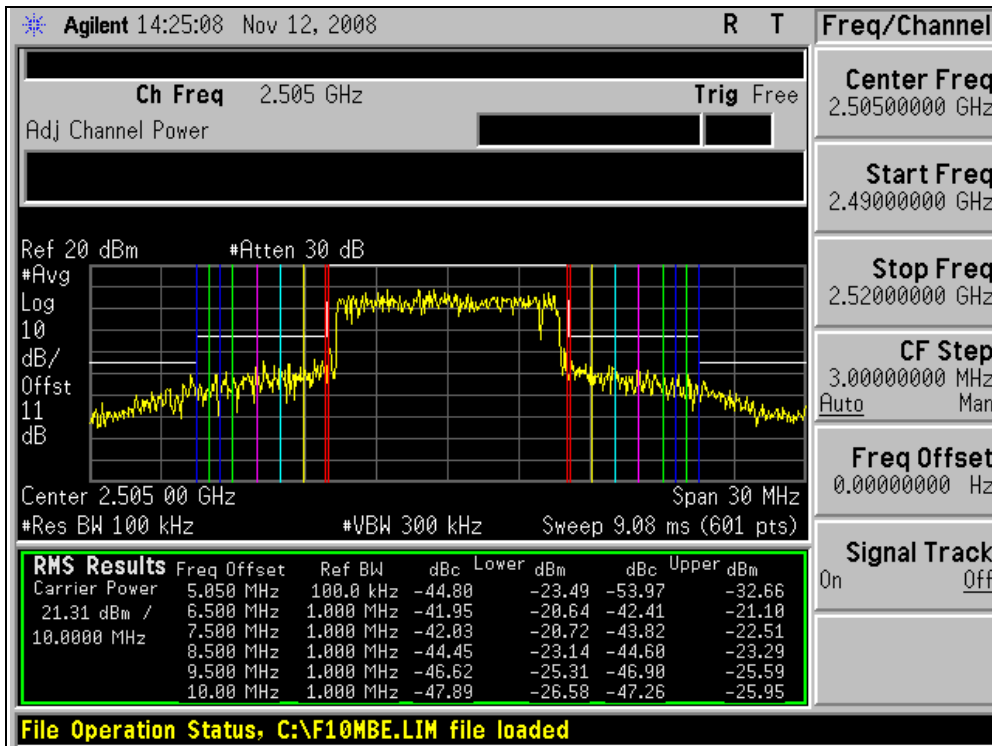
2685MHz



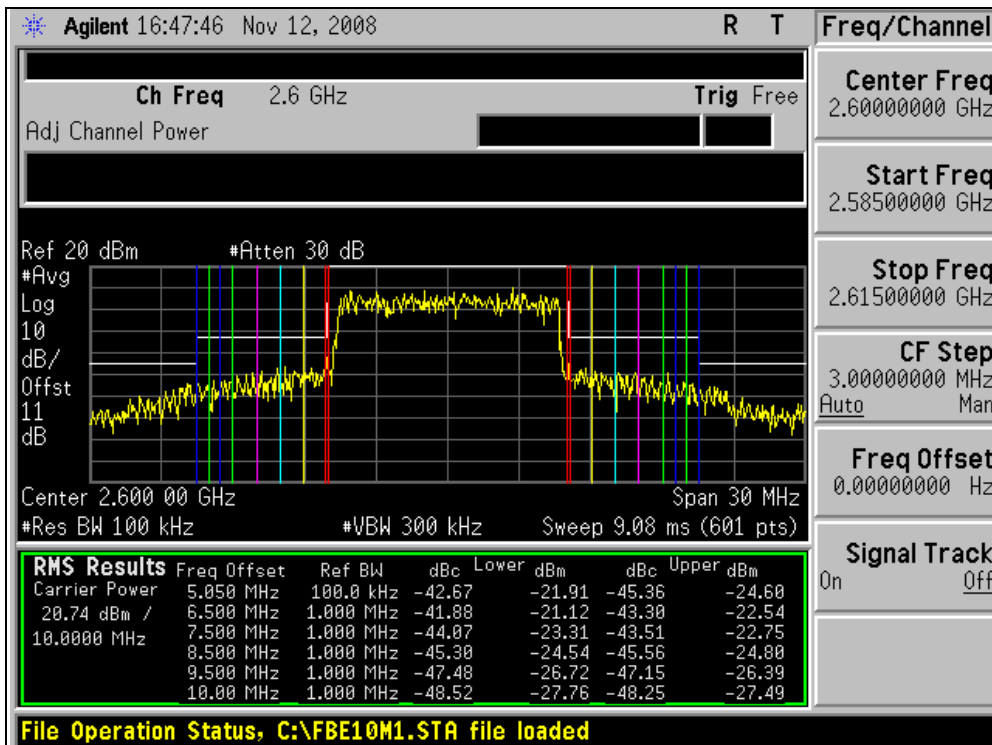


A D T

16QAM 1/2 2505MHz

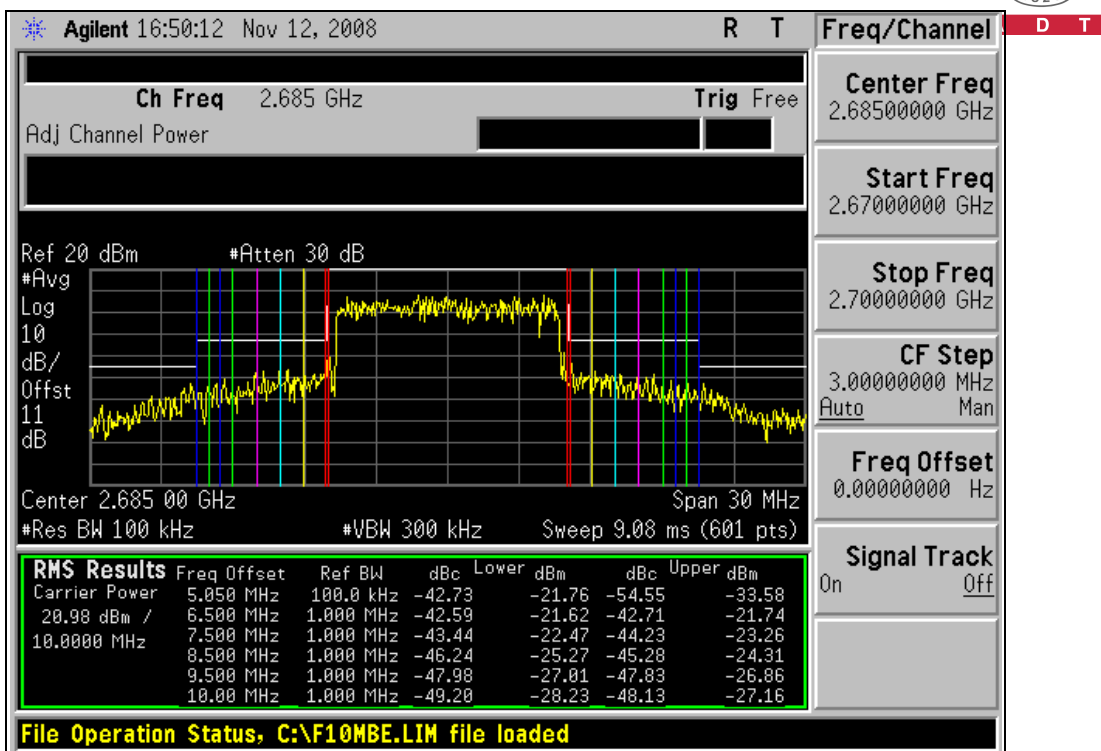


2600MHz



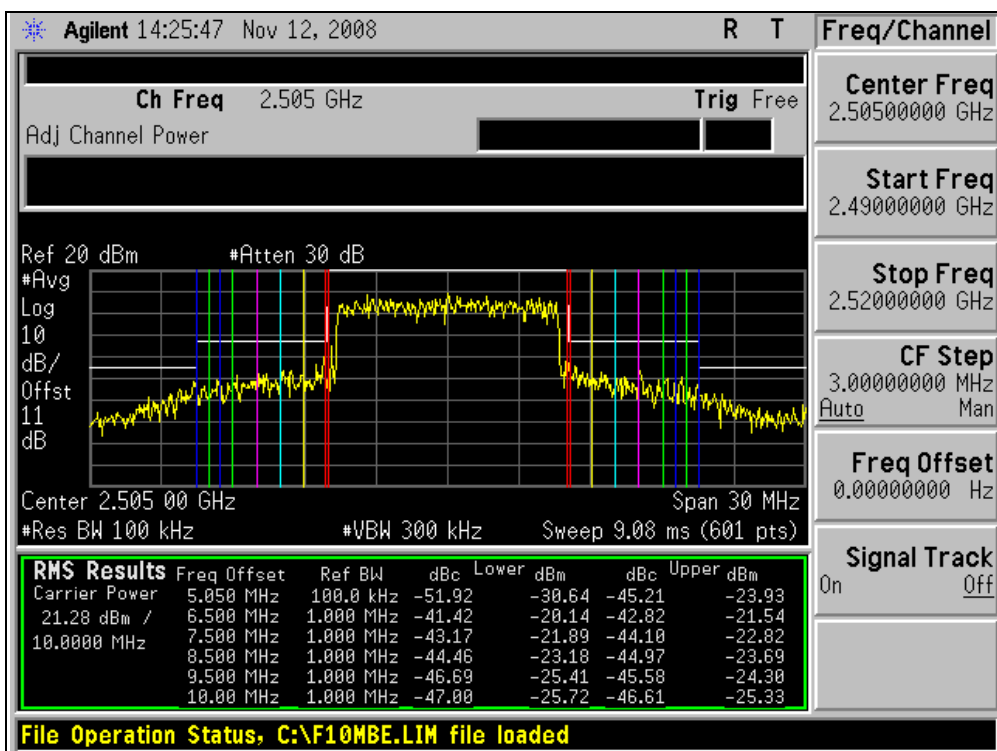


2685MHz



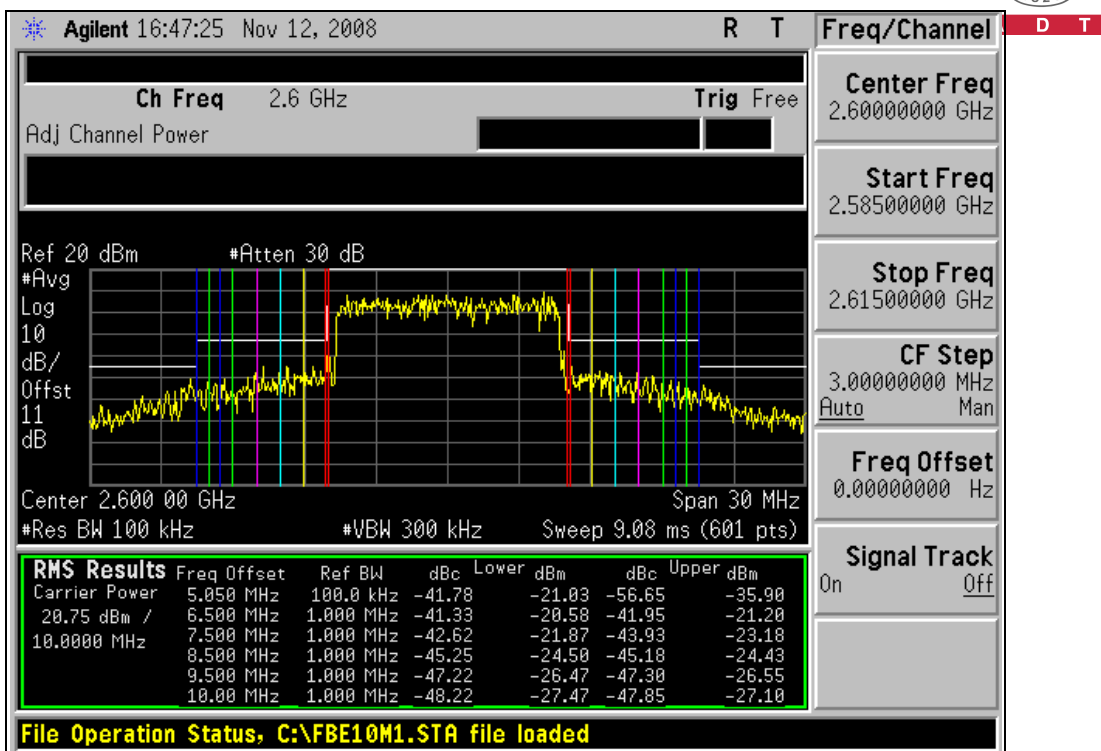
16QAM 3/4

2505MHz

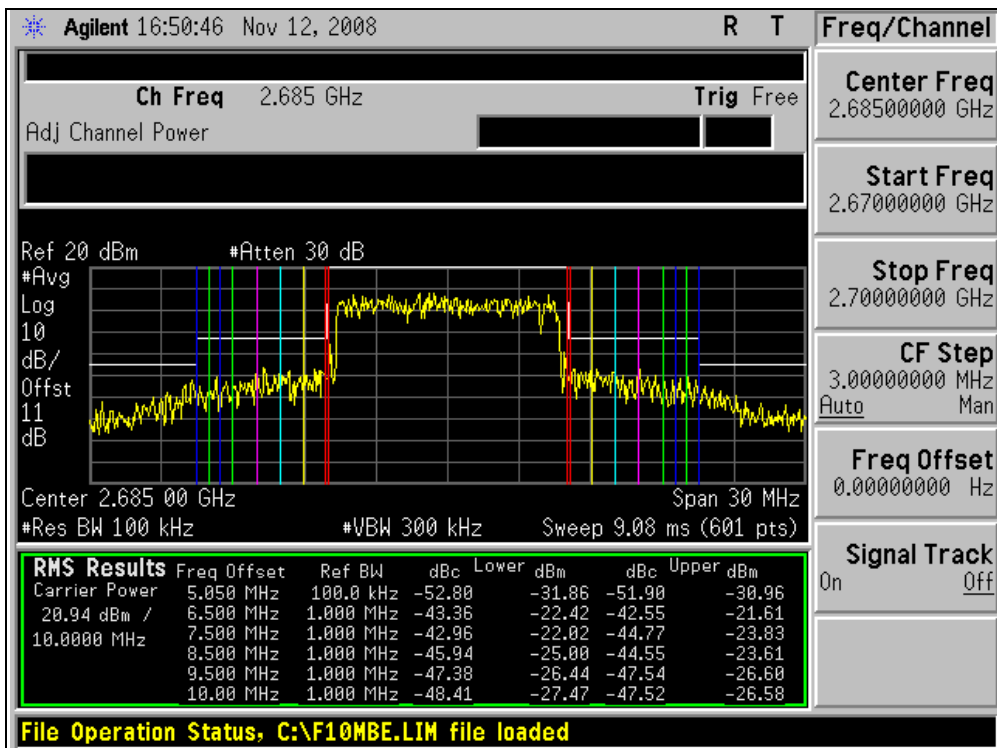




2600MHz



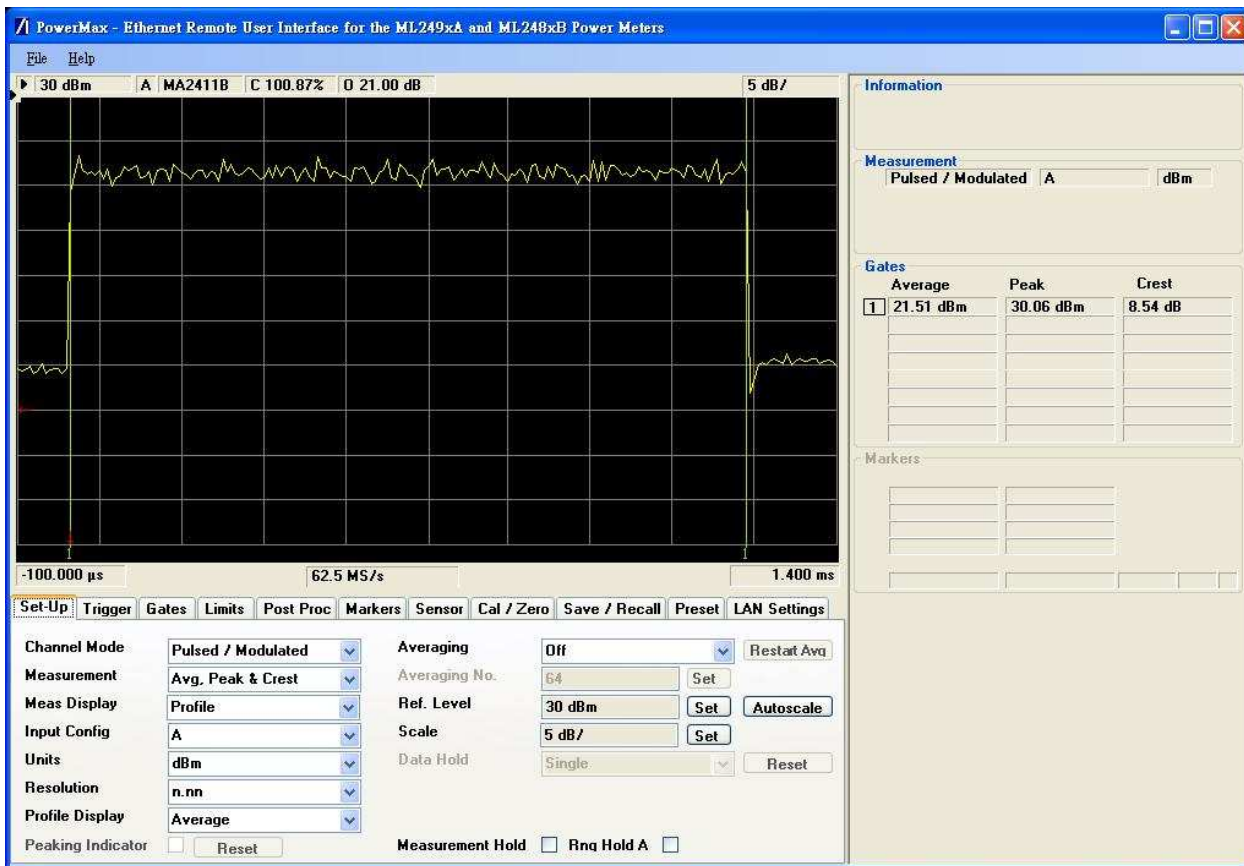
2685MHz



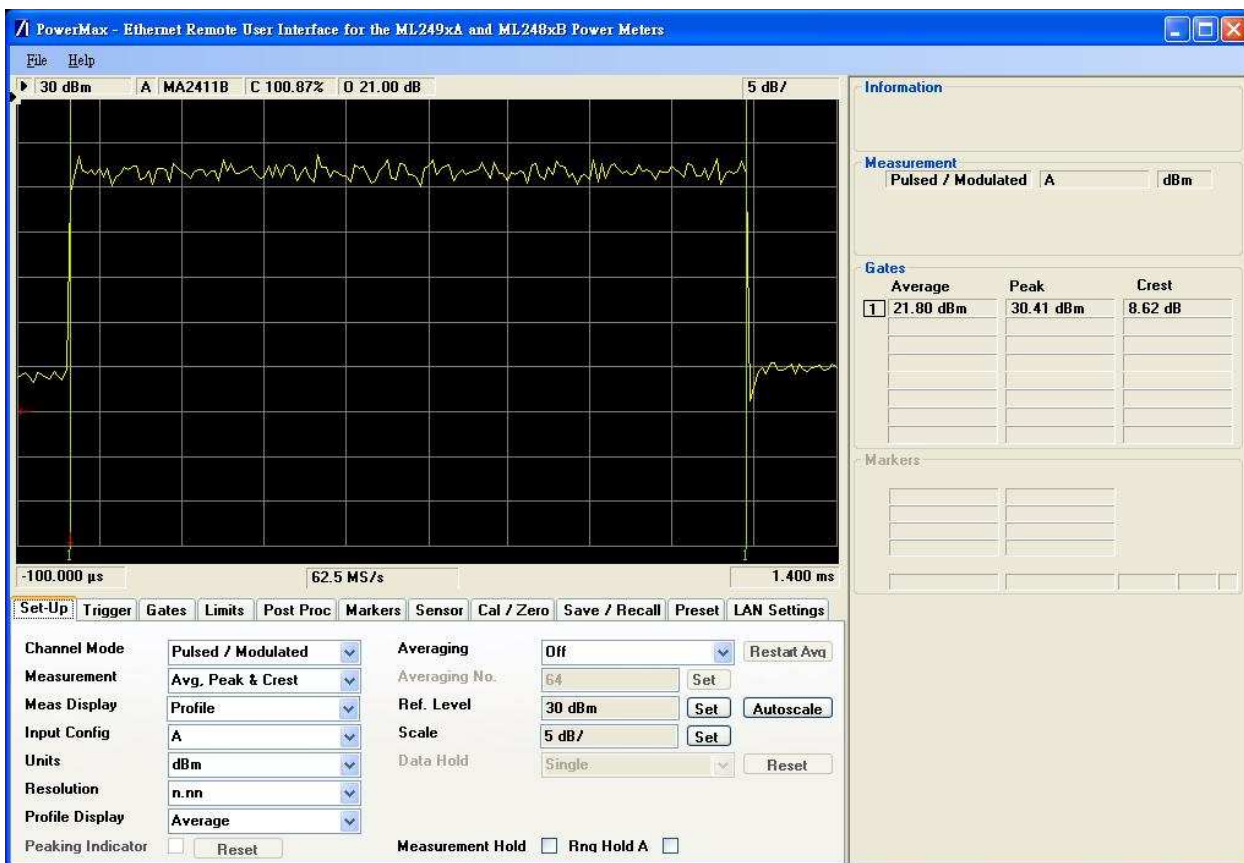
UL BURST PEAK-TO-AVERAGE POWER RATIO (PAR)

Communication: 5MHz QPSK 1/2

Channel: 2505MHz



Channel: 2600MHz

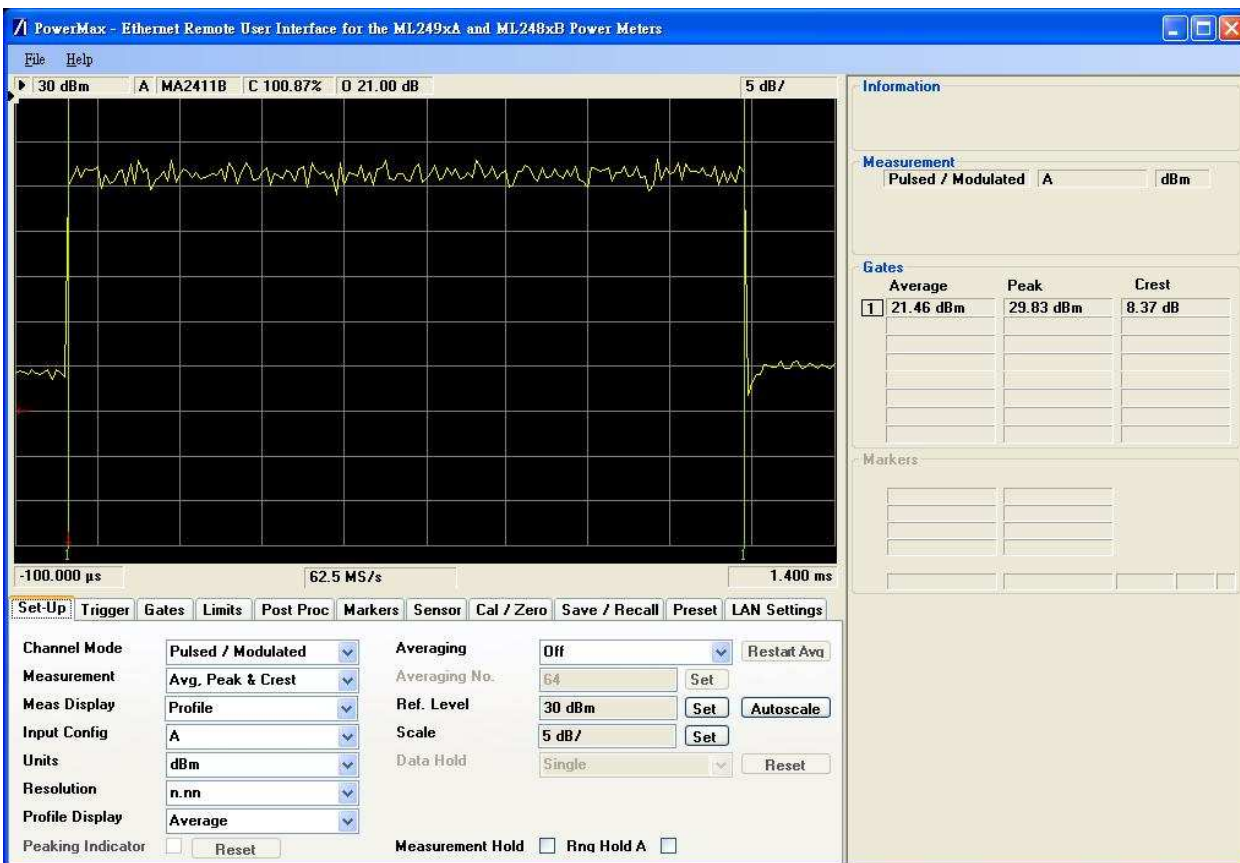


Channel: 2685MHz

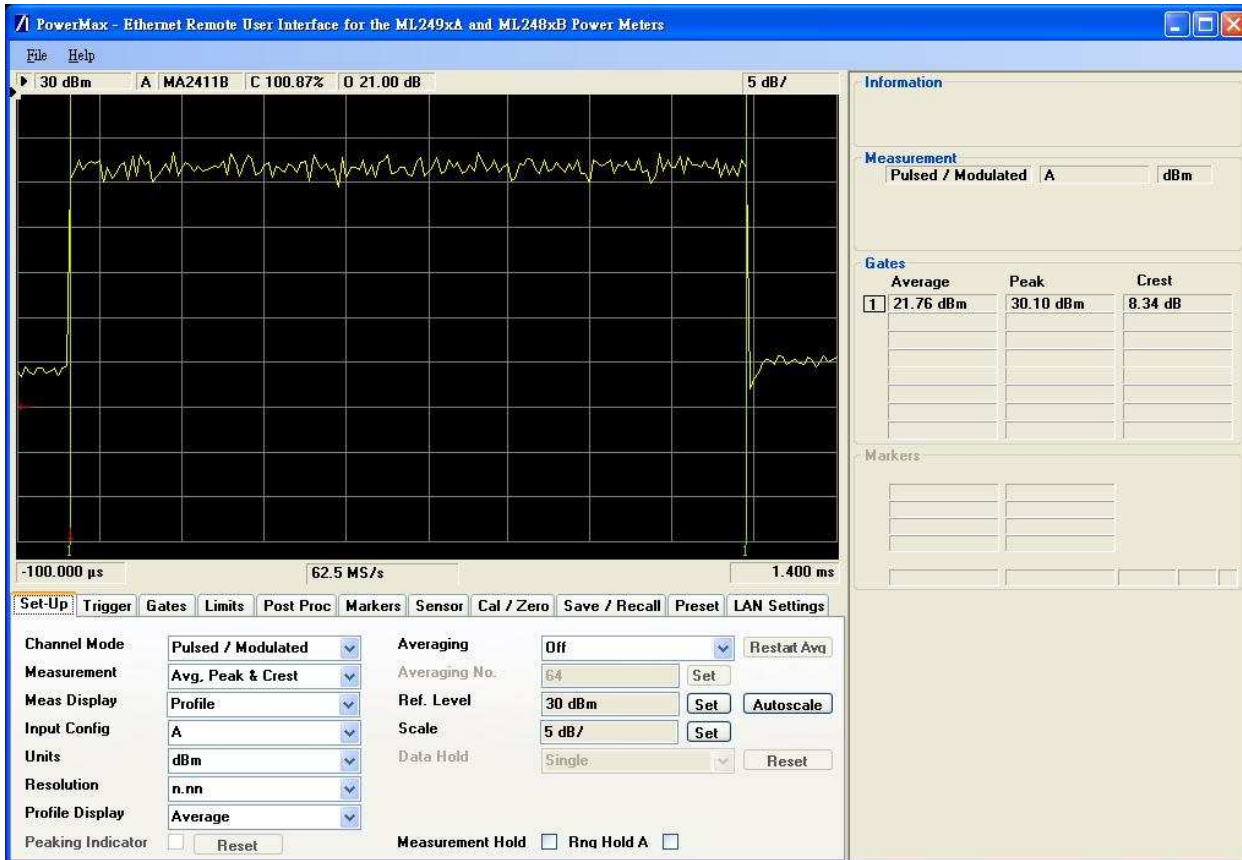


Communication: 5MHz QPSK 3/4

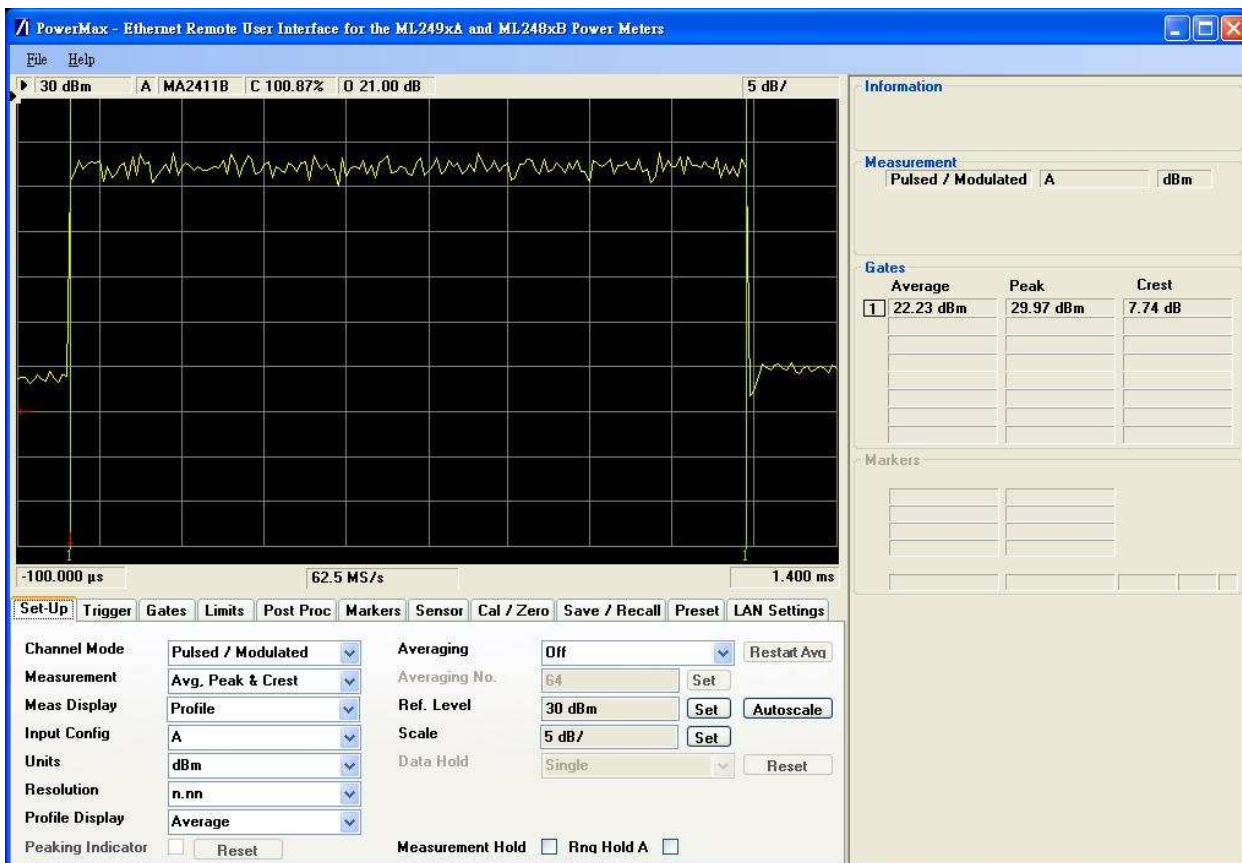
Channel: 2505MHz



Channel: 2600MHz

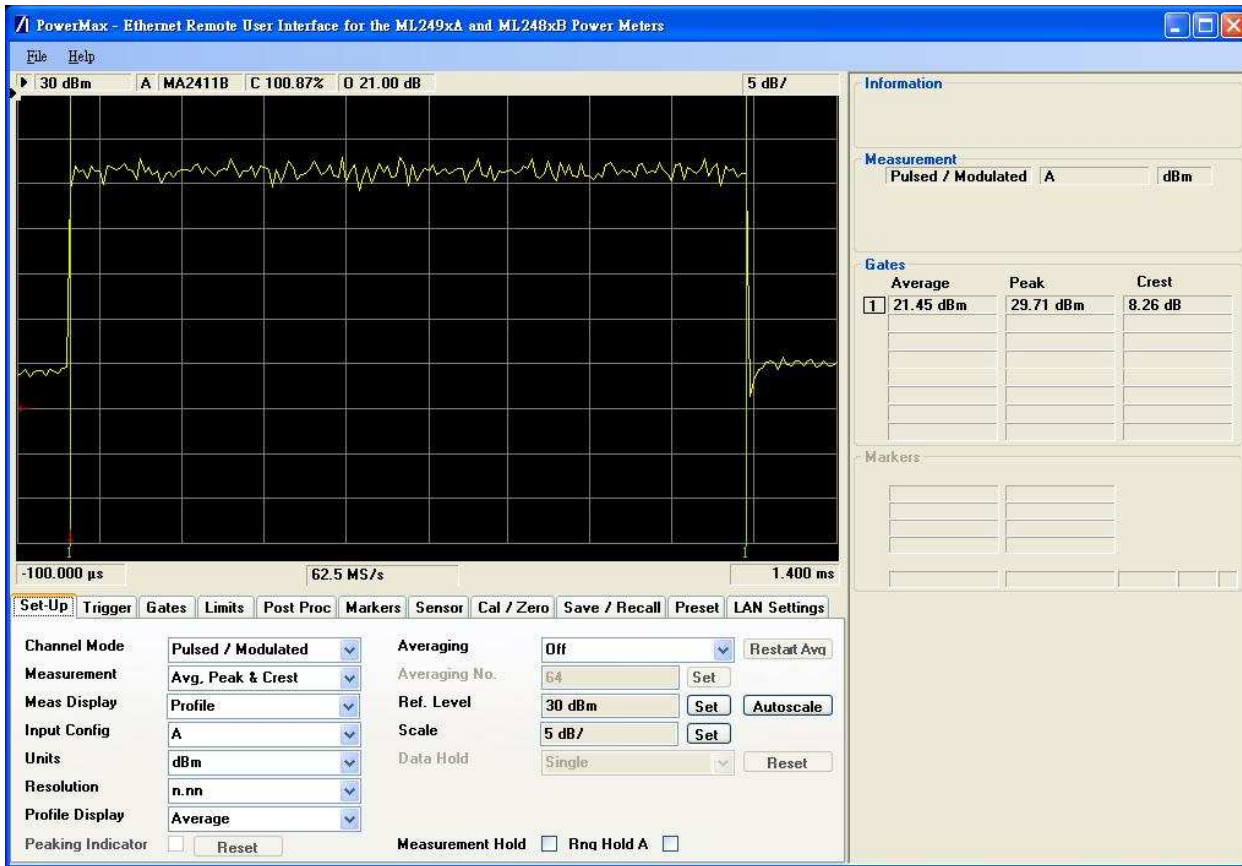


Channel: 2685MHz

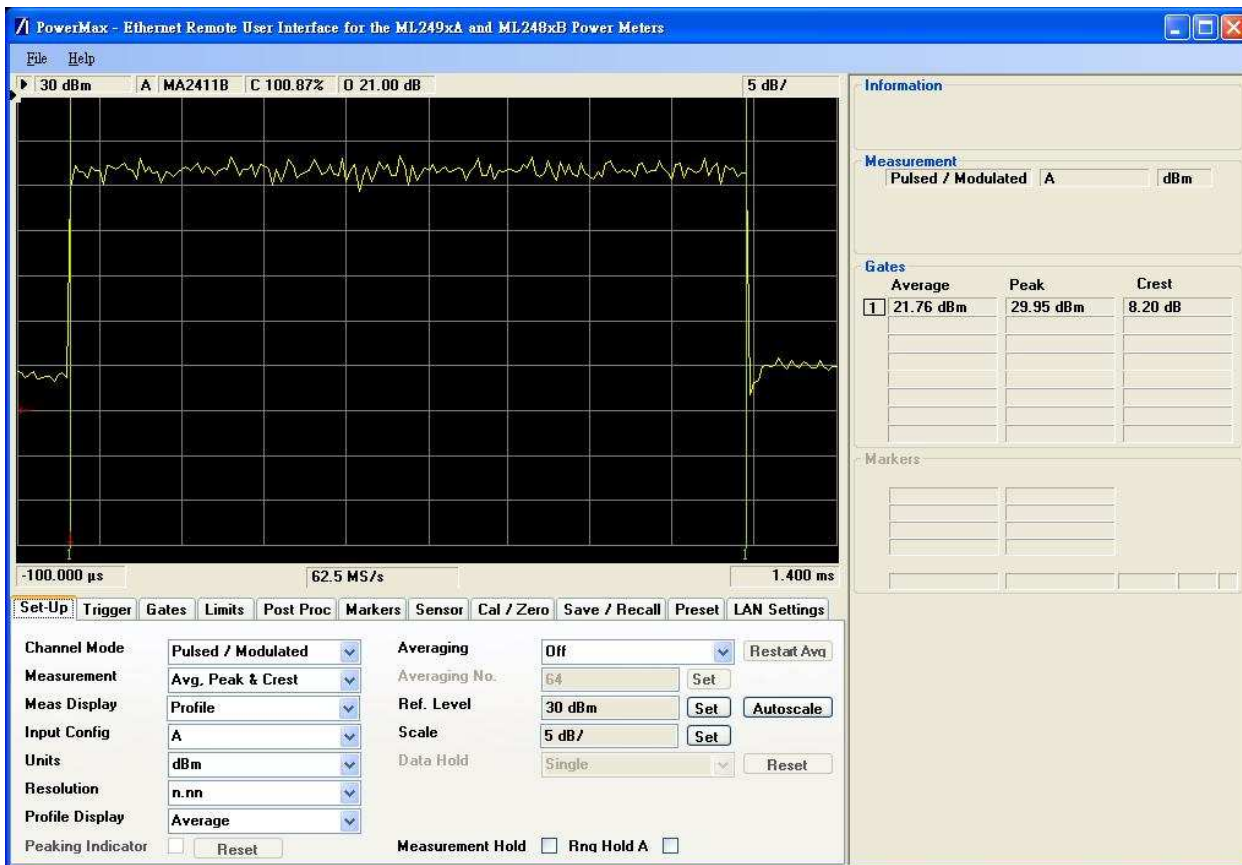


Communication: 5MHz 16QAM 1/2

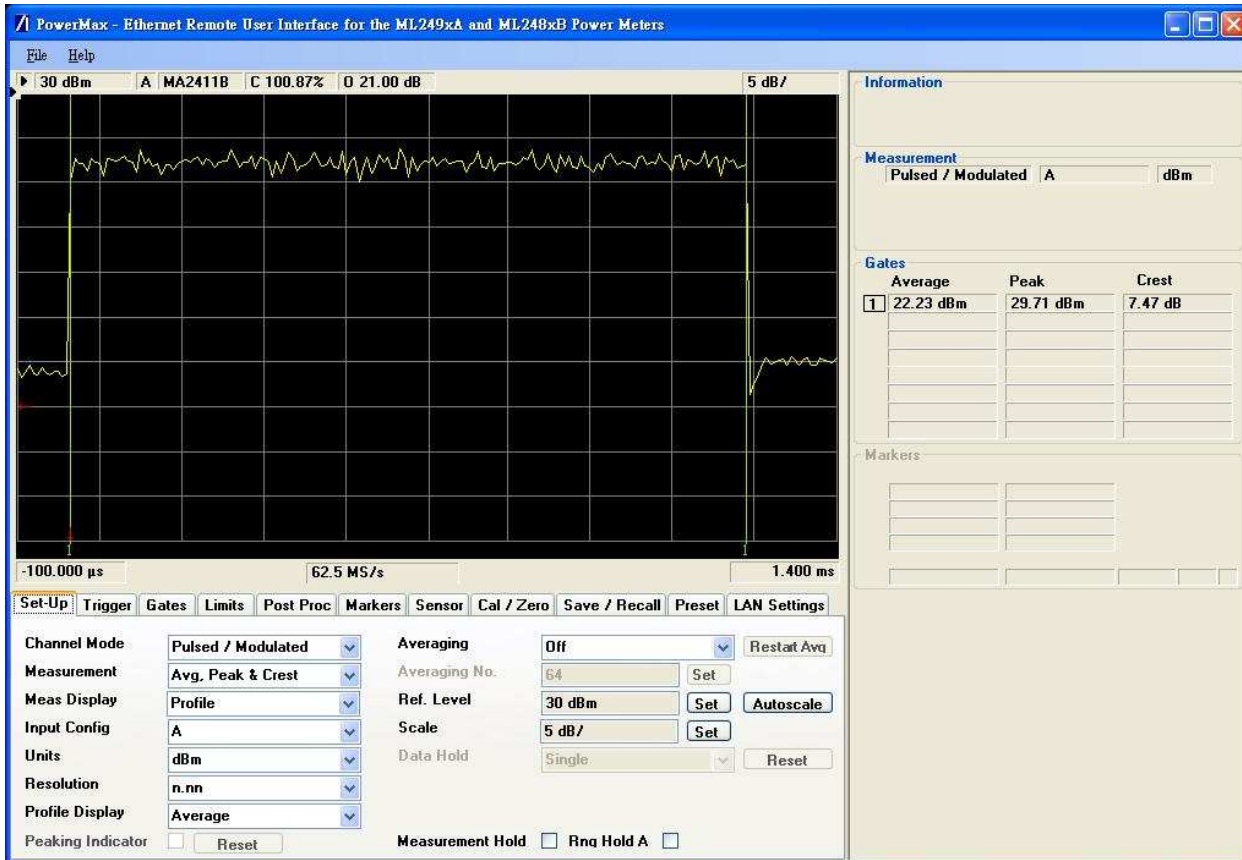
Channel: 2505MHz



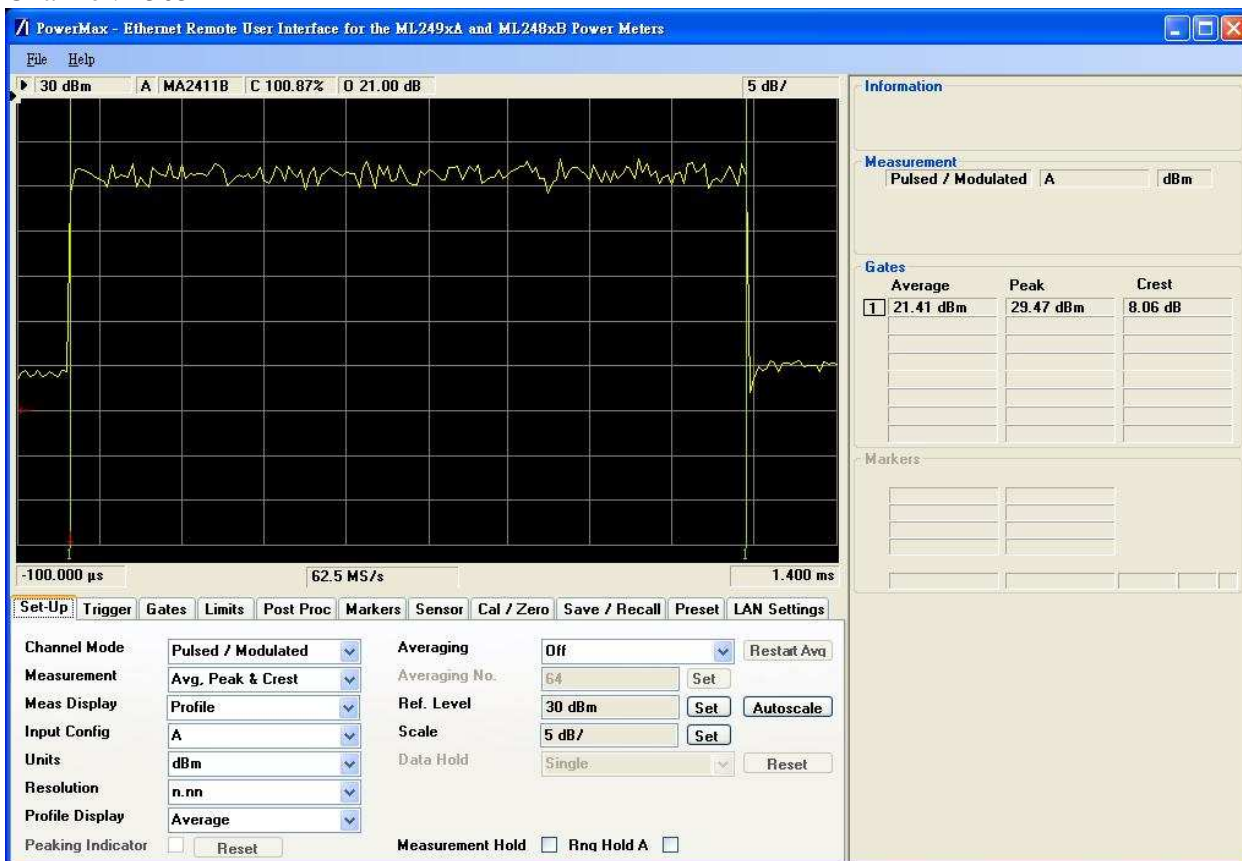
Channel: 2600MHz



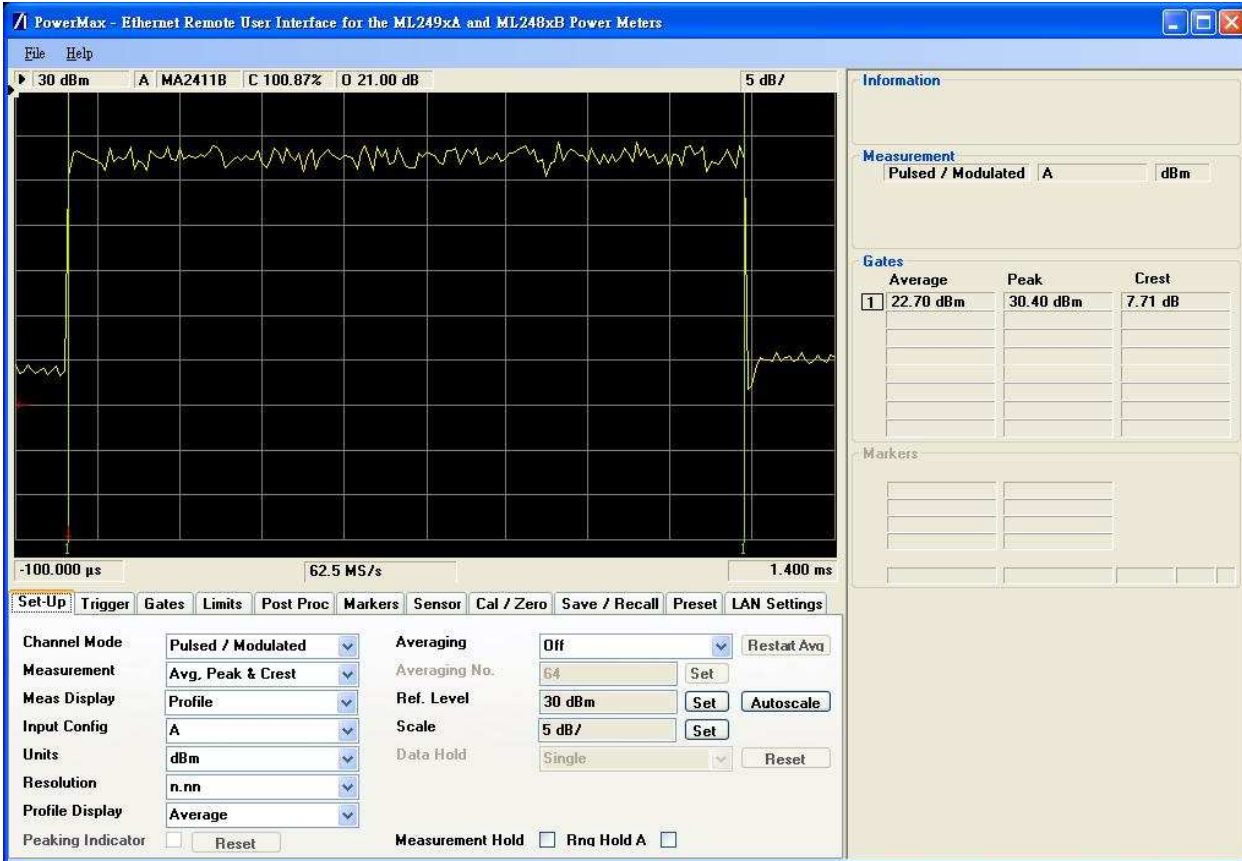
Channel: 2685MHz



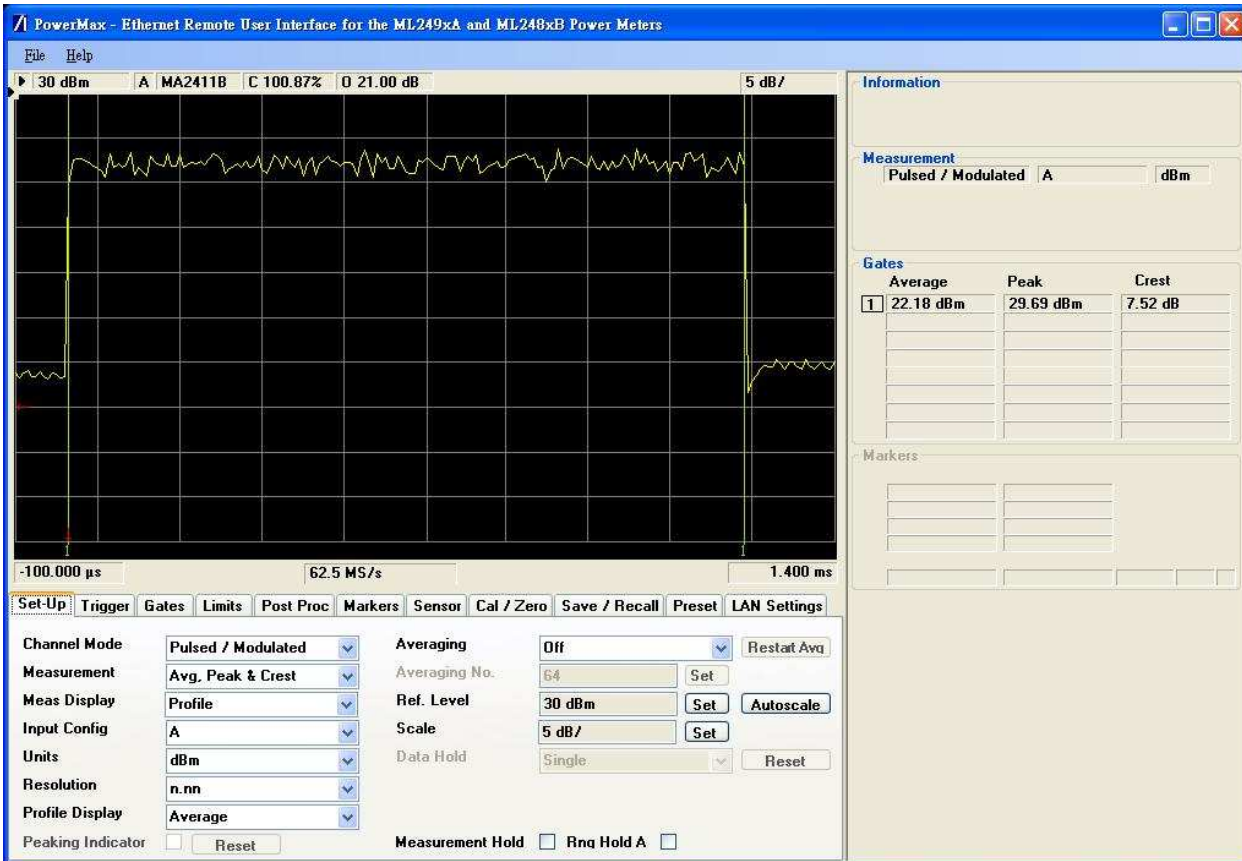
Communication: 5MHz 16QAM 3/4
Channel: 2505MHz



Channel: 2600MHz

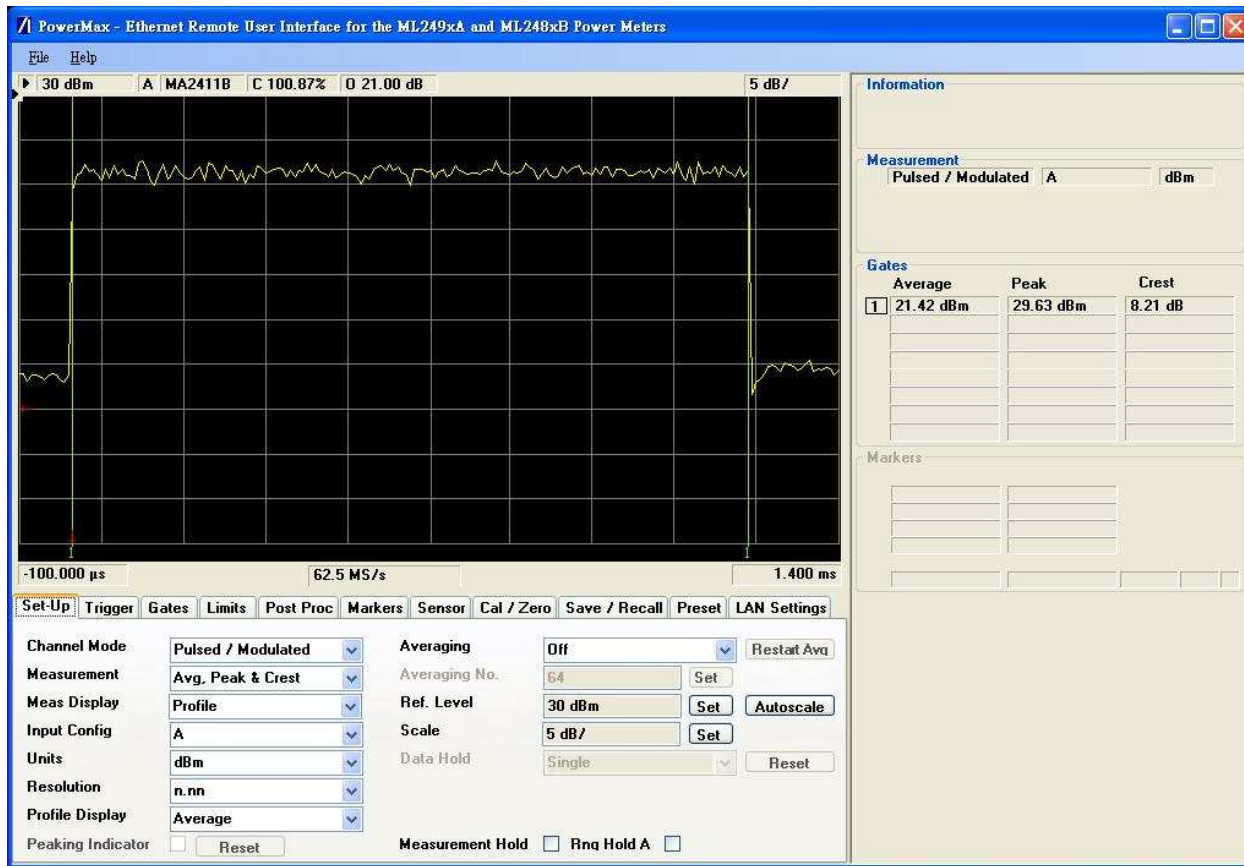


Channel: 2685MHz



Communication: 10MHz QPSK 1/2

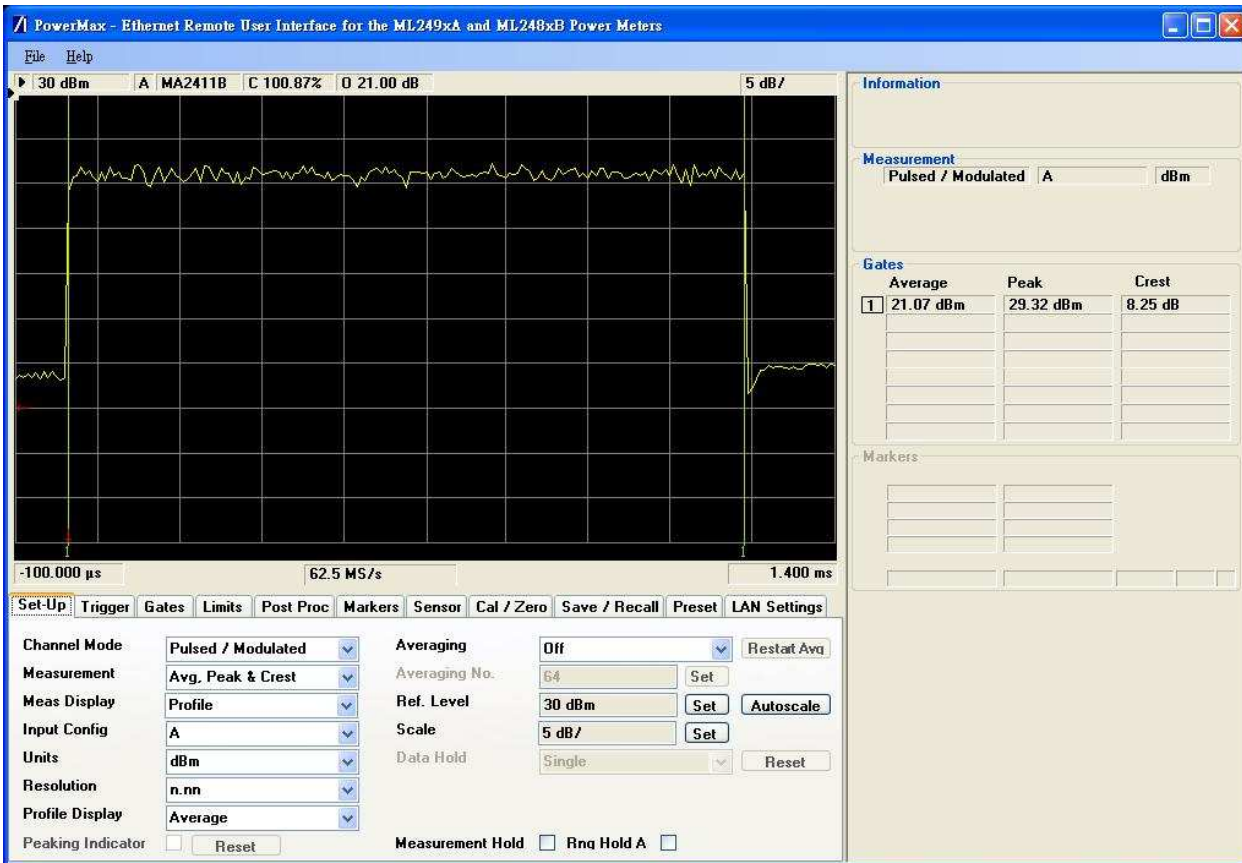
Channel: 2505MHz



Channel: 2600MHz

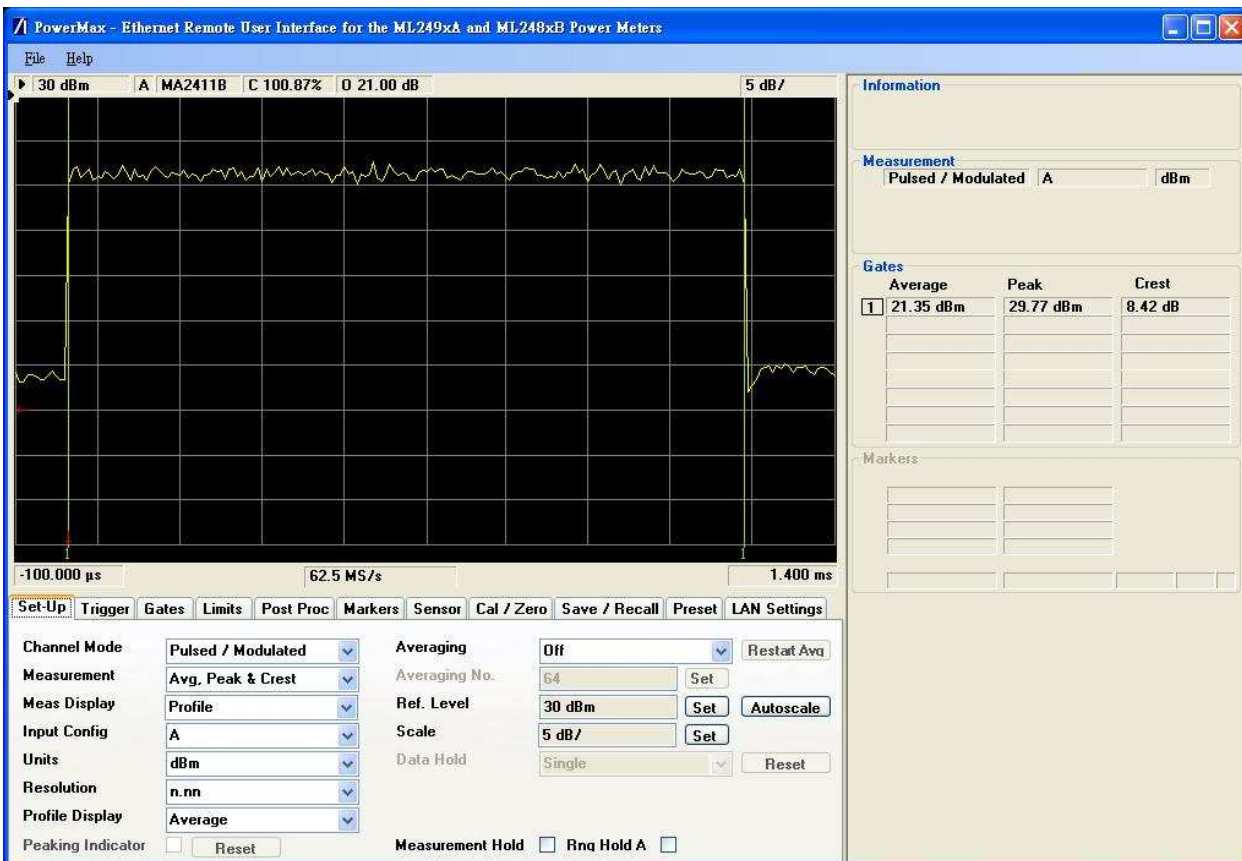


Channel: 2685MHz

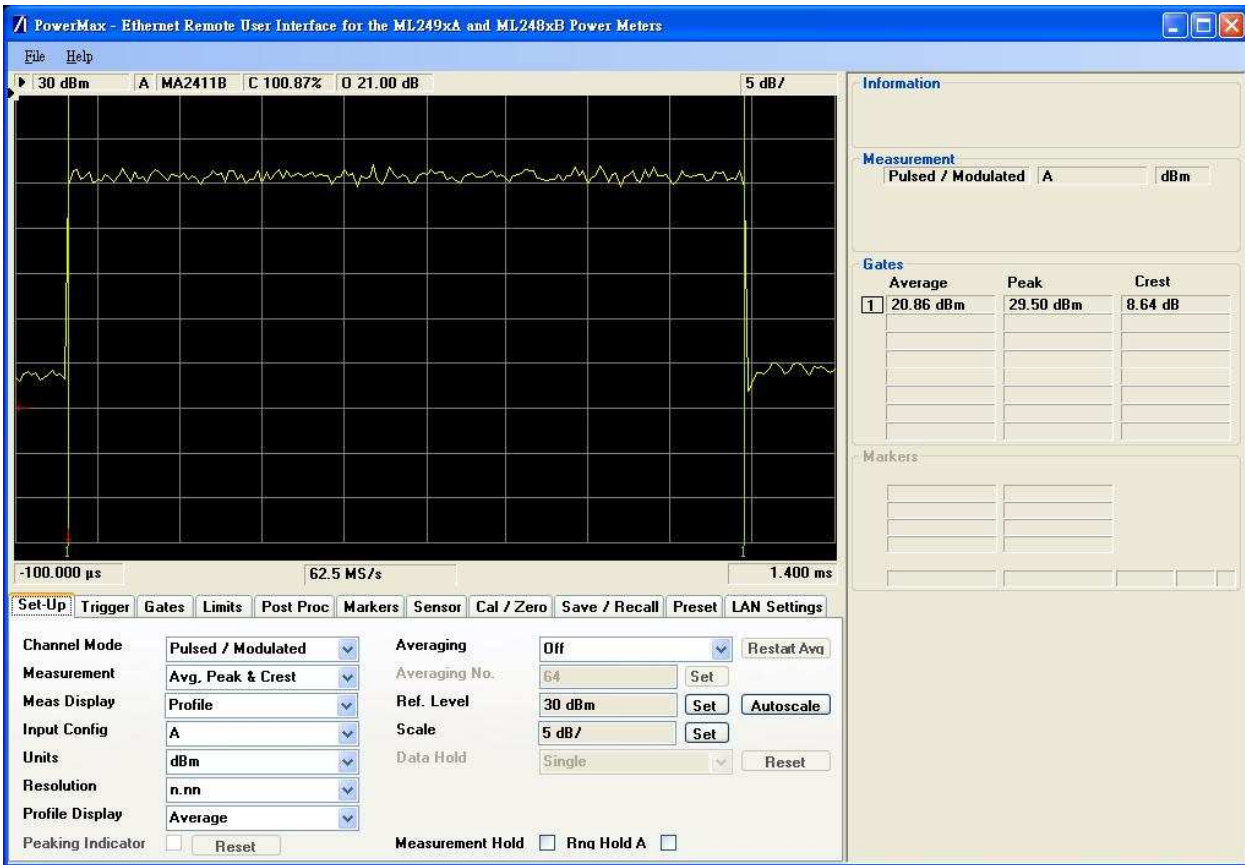


Communication: 10MHz QPSK 3/4

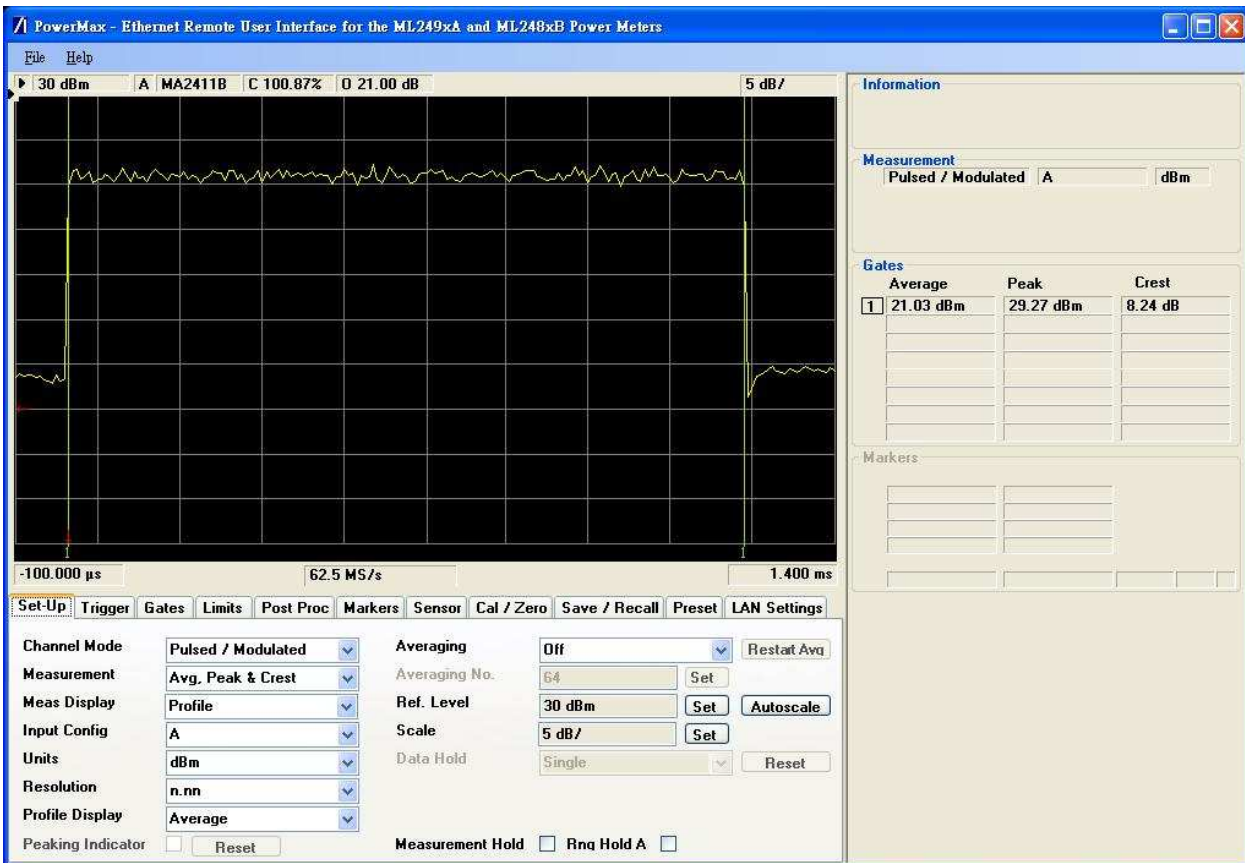
Channel: 2505MHz



Channel: 2600MHz

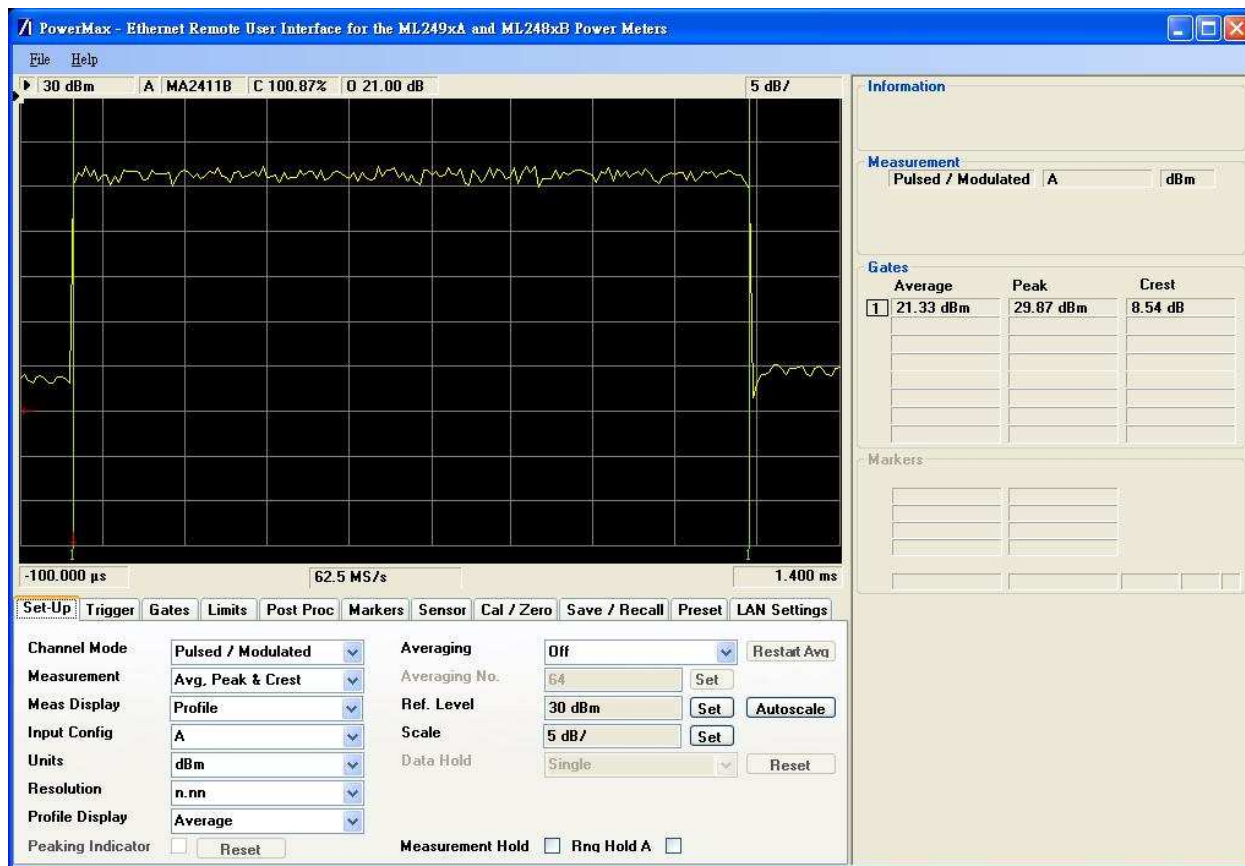


Channel: 2685MHz



Communication: 10MHz 16QAM 1/2

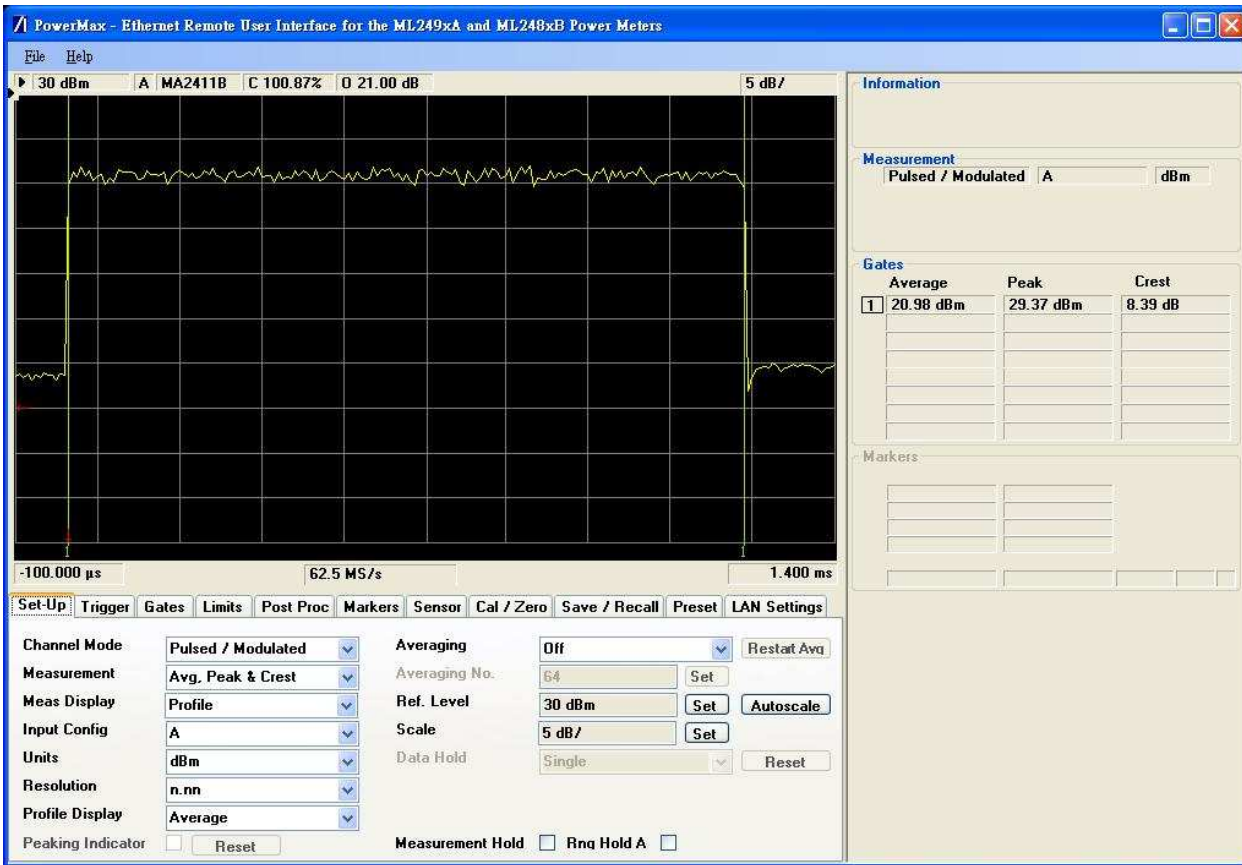
Channel: 2505MHz



Channel: 2600MHz

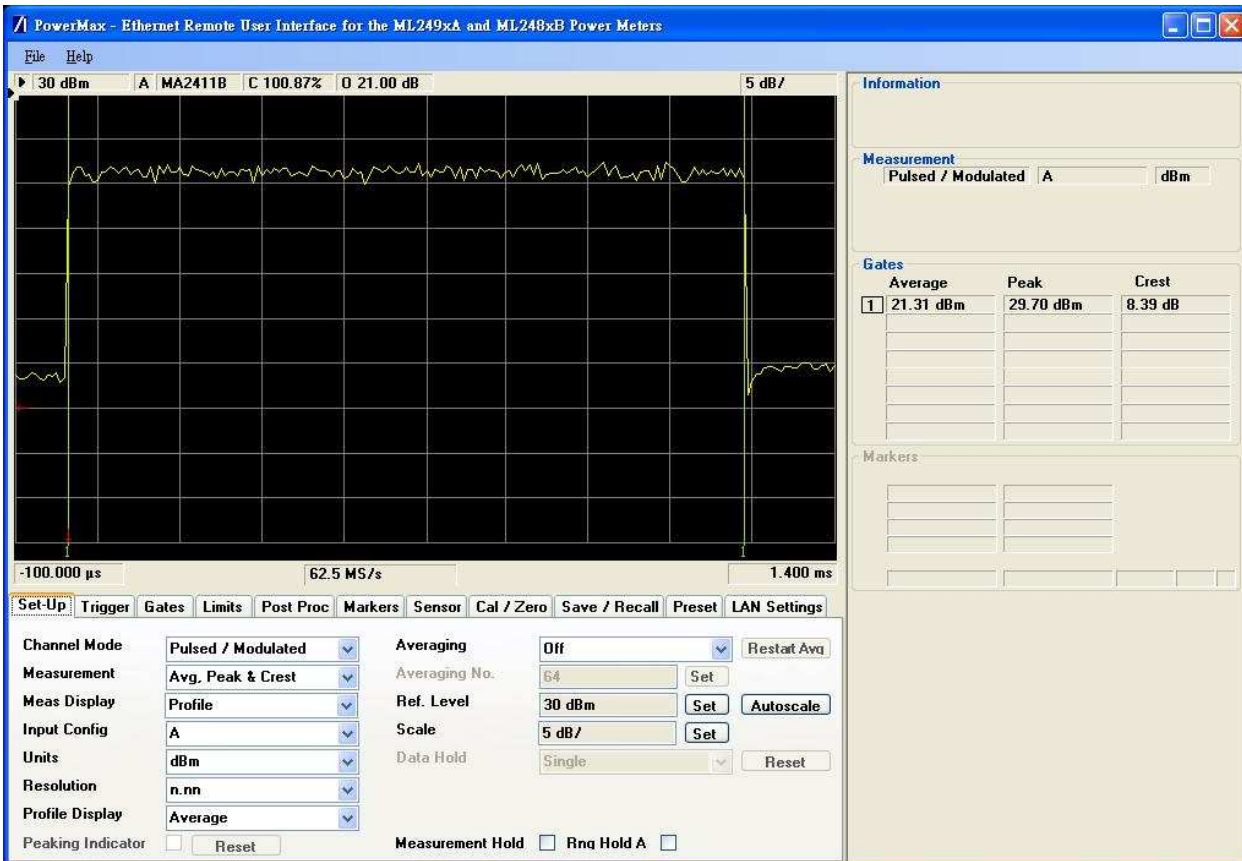


Channel: 2685MHz

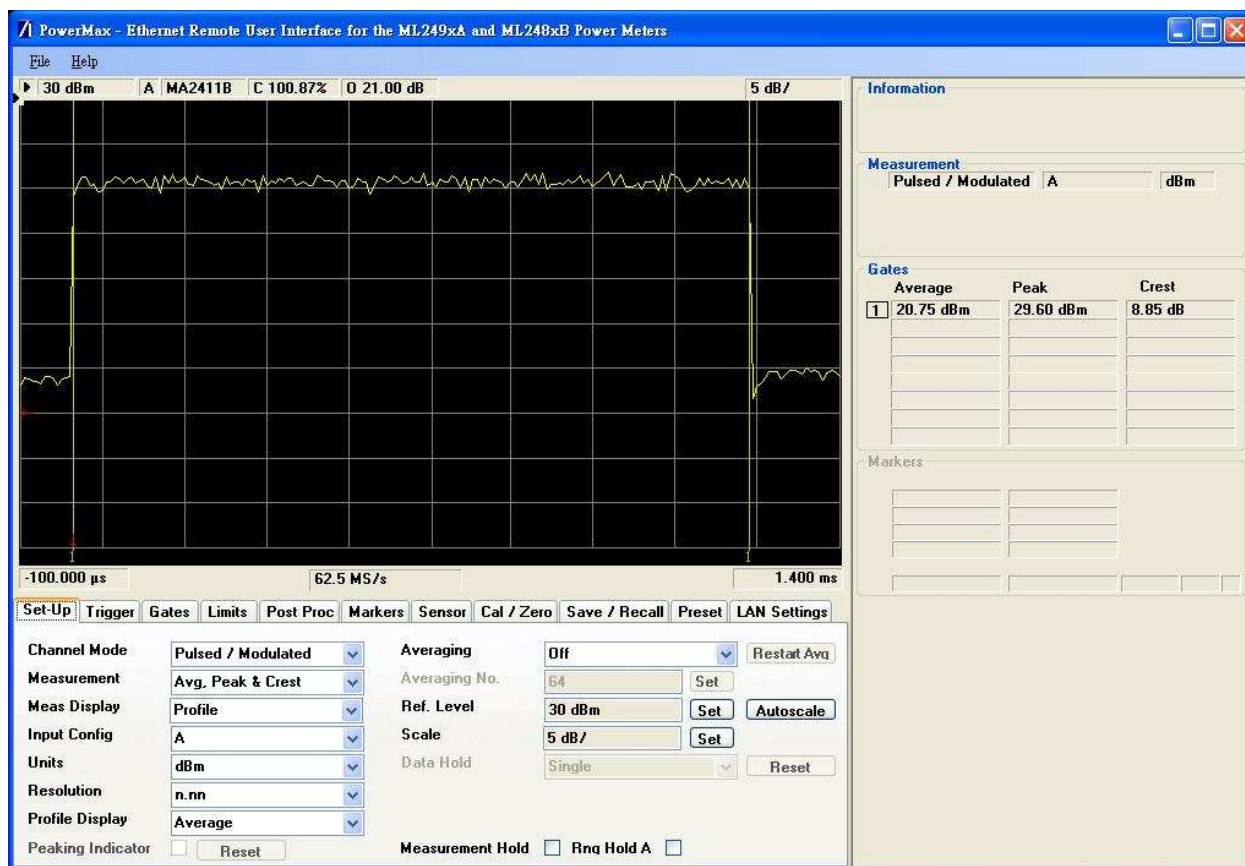


Communication: 10MHz 16QAM 3/4

Channel: 2505MHz



Channel: 2600MHz



Channel: 2685MHz

