



**Barricade™ N**  
**Draft 11n Wireless 3G Broadband Router**

**SMCWBR14S-3GN**





# Draft 11n Wireless 3G Broadband Router User Guide

---

**SMC<sup>®</sup>**

**Networks**

20 Mason

Irvine, CA 92618

Phone: (949) 679-8000

November 2009  
Pub. # 14910000029W  
E112009-AP-R01

Information furnished by SMC Networks, Inc. (SMC) is believed to be accurate and reliable. However, no responsibility is assumed by SMC for its use, nor for any infringements of patents or other rights of third parties which may result from its use. No license is granted by implication or otherwise under any patent or patent rights of SMC. SMC reserves the right to change specifications at any time without notice.

Copyright © 2009 by

SMC Networks, Inc.

20 Mason

Irvine, CA 92618

All rights reserved.

**Trademarks:**

SMC is a registered trademark; and EZ Switch, TigerStack and TigerSwitch are trademarks of SMC Networks, Inc. Other product and company names are trademarks or registered trademarks of their respective holders.

# Warranty and Product Registration

To register SMC products and to review the detailed warranty statement, please refer to the Support Section of the SMC Website at <http://www.smc.com>.



# Compliances

## **Federal Communication Commission Interference Statement**

This equipment has been tested and found to comply with the limits for a Class B digital device, pursuant to Part 15 of the FCC Rules. These limits are designed to provide reasonable protection against harmful interference in a residential installation. This equipment generates, uses and can radiate radio frequency energy and, if not installed and used in accordance with the instructions, may cause harmful interference to radio communications. However, there is no guarantee that interference will not occur in a particular installation. If this equipment does cause harmful interference to radio or television reception, which can be determined by turning the equipment off and on, the user is encouraged to try to correct the interference by one of the following measures:

- Reorient or relocate the receiving antenna
- Increase the separation between the equipment and receiver
- Connect the equipment into an outlet on a circuit different from that to which the receiver is connected
- Consult the dealer or an experienced radio/TV technician for help

This device complies with Part 15 of the FCC Rules. Operation is subject to the following two conditions: (1) This device may not cause harmful interference, and (2) this device must accept any interference received, including interference that may cause undesired operation.

**FCC Caution:** Any changes or modifications not expressly approved by the party responsible for compliance could void the user's authority to operate this equipment.

## **IMPORTANT NOTE:**

### **FCC Radiation Exposure Statement**

This equipment complies with FCC radiation exposure limits set forth for an uncontrolled environment. This equipment should be installed and operated with minimum distance 20cm between the radiator and your body. End users must follow the specific operating instructions for satisfying RF exposure compliance.

This transmitter must not be co-located or operating in conjunction with any other antenna or transmitter.

IEEE 802.11b, 802.11g or 802.11n operation of this product in the U.S.A. is firmware-limited to channels 1 through 11.

The availability of some specific channels and/or operational frequency bands are country dependent and are firmware programmed at the factory to match the intended destination. The firmware setting is not accessible by the end user.

Following three 3G cards have passed co-located EMC / RF exposure test with this device and can be used with this device. Other 3G cards may or may not comply with FCC rules, please consult the manufacturer before purchase.

Interface	Brand Name	Model Name	FCC ID
USB port	HUAWEI	E220	QISE220
	Novatel	MCD3000	PKRNVVMCD3000
	Novatel	MC727	PKRNVVMC727

## EC Conformance Declaration

Marking by the above symbol indicates compliance with the Essential Requirements of the R&TTE Directive of the European Union (1999/5/EC). This equipment meets the following conformance standards:

- EN 60950-1: 2006  
Safety of Information Technology Equipment
- EN 50385: 2002  
Generic standard to demonstrate the compliance of electronic and electrical apparatus with the basic restrictions related to human exposure to electromagnetic fields (0 Hz - 300 GHz)
- EN 300328 V1.7.1 (2006)  
Electromagnetic compatibility and Radio spectrum Matters (ERM); Wideband transmission systems; Data transmission equipment operating in the 2,4 GHz ISM band and using wide band modulation techniques; Harmonized EN covering essential requirements under article 3.2 of the R&TTE Directive
- EN 301 489-1 V1.8.1 (2008-04) and EN 301 489-17 V1.3.2 (2008-4)  
Electromagnetic compatibility and Radio spectrum Matters (ERM); ElectroMagnetic Compatibility (EMC) standard for radio equipment and services; Part 17: Specific conditions for 2,4 GHz wideband transmission systems and 5 GHz high performance RLAN equipment

This device is a 2.4 GHz wideband transmission system (transceiver), intended for use in all EU member states and EFTA countries, except in France and Italy where restrictive use applies.

In Italy the end-user should apply for a license at the national spectrum authorities in order to obtain authorization to use the device for setting up outdoor radio links and/or for supplying public access to telecommunications and/or network services.

This device may not be used for setting up outdoor radio links in France and in some areas the RF output power may be limited to 10 mW EIRP in the frequency range of 2454 - 2483.5 MHz. For detailed information the end-user should contact the national spectrum authority in France.

This device is intended for use in the following European Community and EFTA countries:





Lithuanian Lietuvių	Šiuo SMC deklaruoja, kad šis Radio LAN device atitinka esminius reikalavimus ir kitas 1999/5/EB Direktyvos nuostatas.
Maltese <i>Malti</i>	Hawnhekk, SMC, jiddikjara li dan <i>Radio LAN devvise</i> jikkonforma mal-htigijiet essenzjali u ma prowdimentu ohrajn relevanti li hemm fid-Dirrettiva 1999/5/EC.
Spanish <i>Español</i>	Por medio de la presente SMC declara que el Radio LAN device cumple con los requisitos esenciales y cualesquiera otras disposiciones aplicables o exigibles de la Directiva 1999/5/CE
Polish <i>Polski</i>	Niniejszym SMC oświadcza, że <i>Radio LAN device</i> jest zgodny z zasadniczymi wymogami oraz pozostałymi stosownymi postanowieniami Dyrektywy 1999/5/EC.
Portuguese <i>Português</i>	SMC declara que este Radio LAN device está conforme com os requisitos essenciais e outras disposições da Directiva 1999/5/CE.
Slovak Slovensky	SMC týmto vyhlasuje, že <i>Radio LAN device</i> spĺňa základné požiadavky a všetky príslušné ustanovenia Smernice 1999/5/ES.
Slovenian <i>Slovensko</i>	SMC izjavlja, da je ta <i>Radio LAN device</i> v skladu z bistvenimi zahtevami in ostalimi relevantnimi določili direktive 1999/5/ES.

## Taiwan NCC 低功率輻射規定

根據國家通信傳播委員會低功率電波輻射性電機管理辦法之規定，應包含下列警語：

第十二條 經型式認證合格之低功率射頻電機，非經許可，公司、商號或使用者均不得擅自變更頻率、加大功率或變更原設計之特性及功能。

第十四條 低功率射頻電機之使用不得影響飛航安全及干擾合法通信；經發現有干擾現象時，應立即停用，並改善至無干擾時方得繼續使用。前項合法通信，指依電信法規定作業之無線電通信。低功率射頻電機須忍受合法通信或工業、科學及醫療用電波輻射性電機設備之干擾。

# About This Guide

## Purpose

This guide details the hardware features of the wireless AP/Router, including its physical and performance-related characteristics, and how to install the device and use its configuration software.

## Audience

This guide is for PC users with a working knowledge of computers. You should be familiar with Windows operating system concepts.

## Conventions

The following conventions are used throughout this guide to show information:

**Note:** Emphasizes important information or calls your attention to related features or instructions.

**Caution:** Alerts you to a potential hazard that could cause loss of data, or damage the system or equipment.

**Warning:** Alerts you to a potential hazard that could cause personal injury.

## Related Publications

The following publication gives basic information on how to install and use the wireless AP/Router.

*Quick Installation Guide*

Also, as part of the wireless AP/Router's software, there is online help that describes all configuration related features.

## Revision History

This section summarizes the changes in each revision of this guide.

### September 2009 Revision

This is the first revision of this guide. This guide is valid for software release v1.1.3.1.



# Table of Contents

---

<b>Chapter 1: Introduction</b>	<b>1-1</b>
Package Checklist	1-1
Hardware Description	1-2
Antennas	1-2
LED Indicators	1-3
Ethernet RJ-45 Ports	1-4
3G Modem USB Port	1-4
Power Socket	1-4
Reset Button	1-4
WPS Button	1-5
Hardware Installation	1-5

---

<b>Chapter 2: Installation</b>	<b>2-1</b>
Gateway Mode	2-1
Bridge Mode	2-2

---

<b>Chapter 3: Network Planning</b>	<b>3-1</b>
Internet Gateway Router	3-1
LAN Access Point	3-2
Wireless Client	3-3
Wireless Bridge	3-4

---

<b>Chapter 4: Initial Configuration</b>	<b>4-1</b>
Using the Setup Wizard	4-2
Common Settings	4-4
Static IP	4-5
DHCP	4-6
PPPoE	4-7
3G	4-8
PPTP	4-11
L2TP	4-12
Bigpond	4-13
WiFi	4-14

---

<b>Chapter 5: System Configuration</b>	<b>5-1</b>
Network Settings	5-4
Management IP	5-4
WAN Settings	5-5
WAN Connection	5-5
Backup WAN	5-5
Common Settings	5-6
DHCP	5-7
Static IP	5-8
PPPoE	5-9
3G	5-11
PPTP	5-14
L2TP	5-15
Bigpond	5-17
Wi-Fi	5-18
LAN Settings	5-19
QoS Settings	5-20
Wireless Settings	5-22
Basic Settings	5-23
Advanced Settings	5-25
WLAN Security	5-27
MAC Access Control Lists	5-37
Wi-Fi Protected Setup (WPS)	5-39
Routing	5-41
Static Route	5-41
Dynamic Route	5-42
Multicast Routing	5-43
Firewall	5-44
NAT	5-44
Packet Filtering	5-48
URL Filter	5-50
Security Settings	5-51
Service Settings	5-52
DHCP	5-52
UPnP Settings	5-54
DDNS Settings	5-55
System Log Settings	5-56
Date and Time Settings	5-57
Ping Test	5-59
Management Settings	5-60
Admin Accounts and Remote Administration	5-60
Config Settings	5-62
Firmware Upgrade	5-63
Status Information	5-63

System Information	5-63
Routing Table	5-66
Packet Statistics	5-67
System Logs	5-68
3G Access History	5-69

---

**Appendix A: Troubleshooting** **A-1**

---

**Appendix B: Specifications** **B-1**

---

**Appendix C: License Information** **C-1**

The GNU General Public License	C-1
--------------------------------	-----

---

**Glossary****Index**





# Chapter 1: Introduction

---

The SMCWBR14S-3GN wireless AP/Router is an IEEE 802.11n wireless gateway router that connects your Internet access device (cable or ADSL modem) to your PC or local area network, or to its own secure wireless network.

The wireless AP/Router can be automatically configured with other Wi-Fi Protected Setup (WPS) devices by simply pressing its WPS button. For more detailed configuration, the unit can also be set up through its easy-to-use web interface.

## Package Checklist

The wireless AP/Router package includes:

- 802.11b/g/n wireless AP/Router (SMCWBR14S-3GN)
- RJ-45 Category 5 network cable
- AC power adapter
- Quick Installation Guide
- EZ Installation and Documentation CD
- Warranty Information Card

Inform your dealer if there are any incorrect, missing or damaged parts. If possible, retain the carton, including the original packing materials. Use them again to repack the product in case there is a need to return it.

## Hardware Description

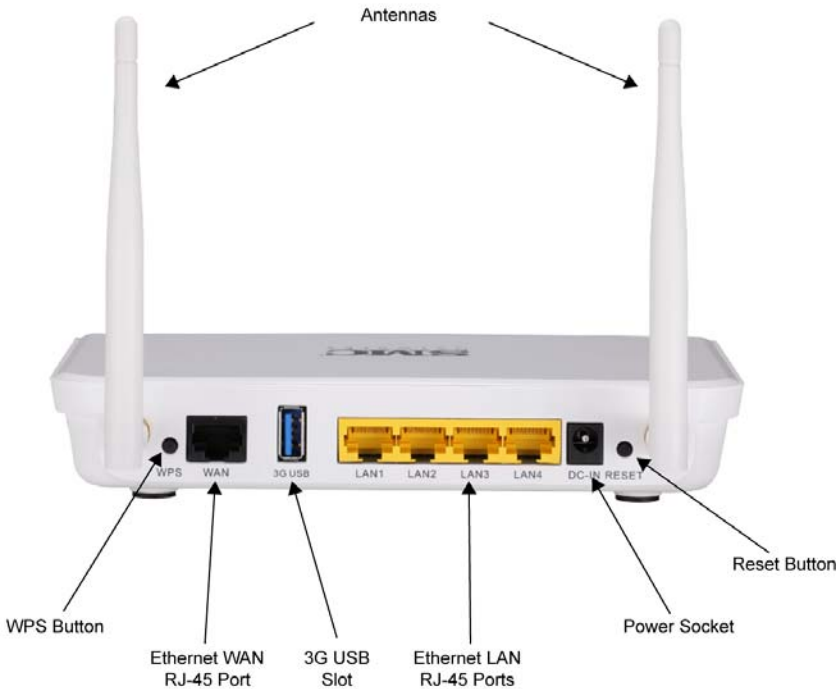


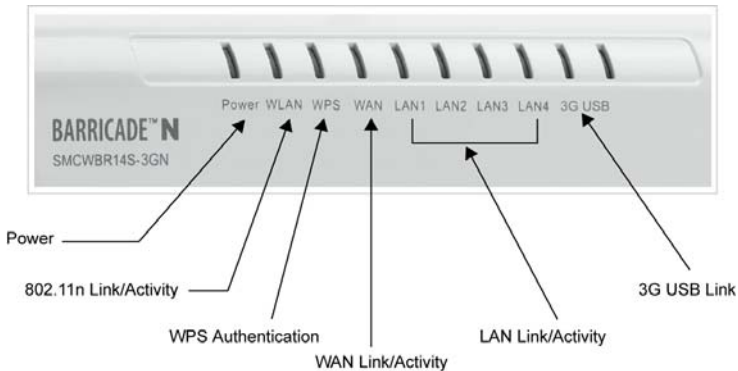
Figure 1-1. Rear Panel

### Antennas

The access point includes integrated MIMO antennas for wireless communications. A MIMO antenna system uses two or more identical antennas to receive and transmit signals, helping to increase data throughput and range. The antennas transmit the outgoing signal as a toroidal sphere (doughnut shaped), with the coverage extending most in a direction perpendicular to the antenna. The antenna should be adjusted to an angle that provides the appropriate coverage for the service area.

## LED Indicators

The wireless AP/Router includes eight status LED indicators, as described in the following figure and table.



**Figure 1-2. LED Indicators**

LED	Status	Description
POWER	On Blue	Indicates that the system is working normally.
WLAN	On Blue	Indicates the 802.11n radio is enabled.
	Blinking Blue	Indicates the AP/Router has an established connection and is transmitting and receiving data.
	Off	Indicates the 802.11n radio is disabled.
WPS	On	Indicates the WPS authentication of a device has been successfully completed.
	Fast Blinking Blue**	Indicates the WPS authentication of a client device is in progress. If the WPS authentication of a device does not complete after 120 seconds, the LED changes to Slow Blinking.
	Slow Blinking Blue*	Indicates the WPS authentication of a device did not complete after 120 seconds. The LED status does not change until the user restarts or disables the WPS connection.
	Off	Indicates that WPS is not in progress.
WAN	On Blue	Indicates a valid link on the WAN Ethernet port.
	Blinking Blue	Indicates the data is being transmitting or receiving.
	Off	The Ethernet port has no valid link.
LAN (4 LEDs)	On Blue	Indicates a valid link on the LAN Ethernet port.
	Blinking Blue	Indicates the Ethernet port is connected and is transmitting or receiving.
	Off	The Ethernet port has no valid link.
3G USB Link	On	Indicates a connection through the attached 3G/3.5G USB modem.
	Fast Flashing Green*	Indicates that the PIN code has failed.

LED	Status	Description
	Ultra Fast Flashing Green**	Indicates that 3G usage is already over the ISP supplied limit.
	Ultra Fast Flashing Green and OFF cycle every 5 seconds**	Indicates that 3G usage is already over the user defined pre-warning limit.
	Slow Flashing Green	Indicates that the 3G/3.5G USB modem is in the process of connecting.
	Off	Indicates that there is no connection or no attached 3G/3.5G device.

\*Slow blinking is an on-off cycle of once every 2 seconds.

\*\*Fast blinking is an on-off cycle of once of every 0.5 seconds.

\*\*\*Untra Fast flashing: on-off cycle of once of every 0.2 seconds

## Ethernet RJ-45 Ports

The wireless AP/Router has the following RJ-45 ports:

- The four RJ-45 LAN ports are for connections to PCs or to a 10/100 Mbps network switch.
- The RJ-45 WAN port is for connection to a DSL or cable modem, or to a LAN or other device that provides your Internet access.

All RJ-45 ports auto-negotiate the operating speed to 10/100 Mbps, the mode to half/full duplex, and the pin signals to MDI/MDI-X. Automatic MDI/MDI-X support enables you to use straight-through cables for all network connections to PCs, switches, or hubs.

## 3G Modem USB Port

The 3G Modem USB Port supports connection to a wireless cellular 3G or 3.5G modem for broadband internet access.

## Power Socket

The wireless AP/Router does not have a power switch. It is powered on when connected to the AC power adapter, and the power adapter is connected to a power source. The power adapter automatically adjusts to any voltage between 100-240 volts at 50 or 60 Hz. No voltage range settings are required.

## Reset Button

The Reset button can be used to restart the wireless AP/Router or restore the factory default configuration. If you press the button for less than 5 seconds, the wireless AP/Router will restart. If you press and hold down the button for 5 seconds or more, any configuration changes you may have made are removed and the wireless AP/Router is restored to its factory default configuration.

## WPS Button

Use the WPS button on the wireless AP/Router to automatically connect devices to the network. Within two minutes, press the physical or virtual button on a single wireless client device to enable it to join the WLAN.

The WPS configuration process may be initiated on any device. Only one client device can connect with the wireless AP/Router after the WPS button is pressed. There is no restriction to the order in which buttons are pressed.

**Note:** Any WPS-compatible devices could unintentionally join the WLAN if they are within range during the two-minute set up period after the WPS button is pressed. Note that only one device at a time can join the network when using the WPS button.

## Hardware Installation

1. **Select a Site** – Choose a proper place for the wireless AP/Router. In general, the best location is at the center of your wireless coverage area, within line of sight of all wireless devices. For optimum performance, consider these points:
  - Mount the wireless AP/Router as high as possible above any obstructions in the coverage area.
  - Avoid mounting next to or near building support columns or other obstructions that may cause reduced signal or null zones in parts of the coverage area.
  - Mount away from any signal absorbing or reflecting structures (such as those containing metal).

**Note:** When choosing a site for mounting the router on a wall, consider the accessibility for network cabling.

2. **Mount the Wireless AP/Router** – The wireless AP/Router can be mounted on any horizontal surface.

Mounting on a wall or wood surface – The access point should be mounted only to a wall or wood surface that is at least 1/2-inch plywood or its equivalent.

- For wall or wood surface mounting, use a cross-head screwdriver and the 20-mm M4 tap screws (not included). Or, drill two holes and insert two hooks.
- Mount the access point to the screws or hooks.

**Note:** Mount the router with the front panel facing upward so that the status LED indicators are clearly visible.

# 1

## Introduction

# Chapter 2: Installation

The wireless AP/Router has two basic operating modes that can be set through the web-based management interface. For information on setting the mode suitable for your network environment, see “Operation Mode configuration” on page 5-4.

- **Gateway Mode** — A gateway mode that connects a wired LAN and wireless clients to an Internet access device, such as a cable or DSL modem. This is the factory set default mode.
- **Bridge Mode** — An access point mode that extends a wired LAN to wireless clients.

In addition to these basic operating modes, the wireless interface supports a Wireless Distribution System (WDS) link to another wireless AP/Router. These advanced configurations are not described in this section. See “Network Planning” on page 3-1 for more information.

In a basic configuration, how the wireless AP/Router is connected depends on the operating mode. The following sections describe connections for basic Gateway Mode and Bridge Mode operation.

## Gateway Mode

In its default Gateway Mode, the wireless AP/Router forwards traffic between an Internet connected cable or ADSL modem, and wired or wireless PCs or notebooks. The basic connections are illustrated in the figure below.

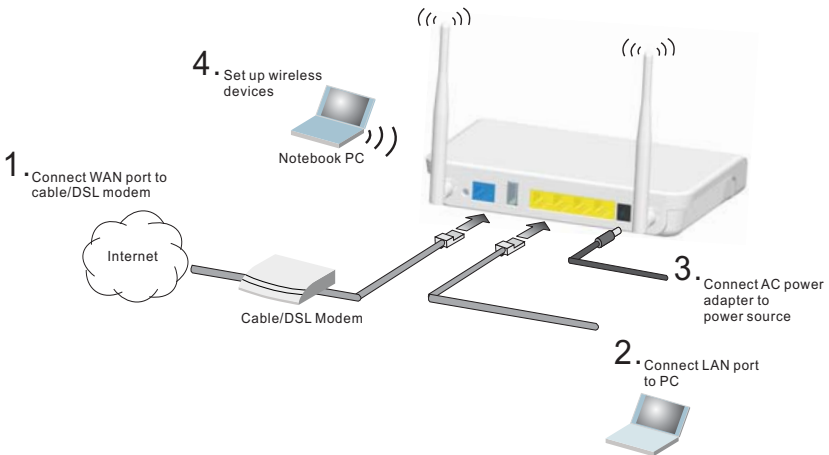


Figure 2-1. Gateway Mode Connection

To connect the wireless AP/Router in Gateway Mode for use as an Internet gateway, follow these steps:

1. Connect an Ethernet cable from the wireless AP/Router's WAN port to your Internet connected cable or ADSL modem.
2. Connect an Ethernet cable from the wireless AP/Router's LAN port to your PC. Alternatively, you can connect to a workgroup switch to support multiple users. The wireless AP/Router can support up to 253 wired and wireless users.
3. Power on the wireless AP/Router by connecting the AC power adapter and plugging it into a power source.

**Caution:** Use ONLY the power adapter supplied with the wireless AP/Router. Otherwise, the product may be damaged.

When you power on the wireless AP/Router, verify that the Power LED turns on and that the other LED indicators start functioning as described under "LED Indicators" on page 1-3.

4. Set up wireless devices by pressing the WPS button on the wireless AP/Router or by using the web interface. See "Initial Configuration" on page 4-1 for more information on accessing the web interface.

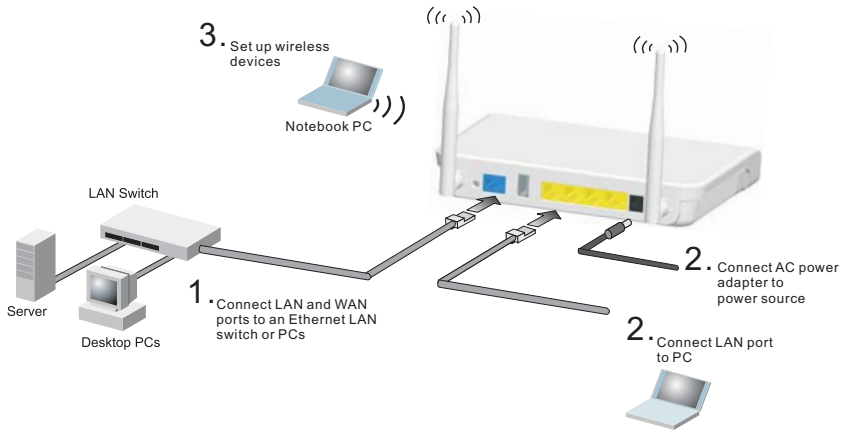
## Bridge Mode

In Bridge Mode, the wireless AP/Router operates as a wireless access point, extending a local wired network to associated wireless clients (PCs or notebooks with wireless capability). From any nearby location, you can then make a wireless connection to the wireless AP/Router and access the wired network resources, including local servers and the Internet.

In Bridge Mode, the wireless AP/Router does not support gateway functions on its WAN port. Both the LAN port and the WAN ports can be connected to a local Ethernet LAN.

**Note:** Bridge Mode is not the factory default mode and must be manually set using the web management interface.





**Figure 2-2. Bridge Mode Connection**

To connect the wireless AP/Router for use as an access point, follow these steps:

1. Using Ethernet cable connect the wireless AP/Router's LAN and WAN ports to PCs or a LAN switch.
2. Power on the wireless AP/Router by connecting the AC power adapter and plugging it into a power source.

**Caution:** Use ONLY the power adapter supplied with the wireless AP/Router. Otherwise, the product may be damaged.

When you power on the wireless AP/Router, verify that the Power LED turns on and that the other LED indicators start functioning as described under "LED Indicators" on page 1-3.

3. Set up wireless devices by pressing the WPS button on the wireless AP/Router or by using the web interface. See "Initial Configuration" on page 4-1 for more information on accessing the web interface.

# 2

## Installation

# Chapter 3: Network Planning

The wireless AP/Router is designed to be very flexible in its deployment options. It can be used as an Internet gateway for a small network, or as an access point to extend an existing wired network to support wireless users. It also supports use as a wireless bridge to connect two wired LANs.

This chapter explains some of the basic features of the wireless AP/Router and shows some network topology examples in which the device is implemented.

## Internet Gateway Router

The wireless AP/Router can connect directly to a cable or DSL modem to provide an Internet connection for multiple users through a single service provider account. Users connect to the wireless AP/Router either through a wired connection to a LAN port, or through the device's own wireless network. The wireless AP/Router functions as an Internet gateway when set to Gateway Mode.

An Internet gateway employs several functions that essentially create two separate Internet Protocol (IP) subnetworks; a private internal network with wired and wireless users, and a public external network that connects to the Internet. Network traffic is forwarded, or routed, between the two subnetworks.

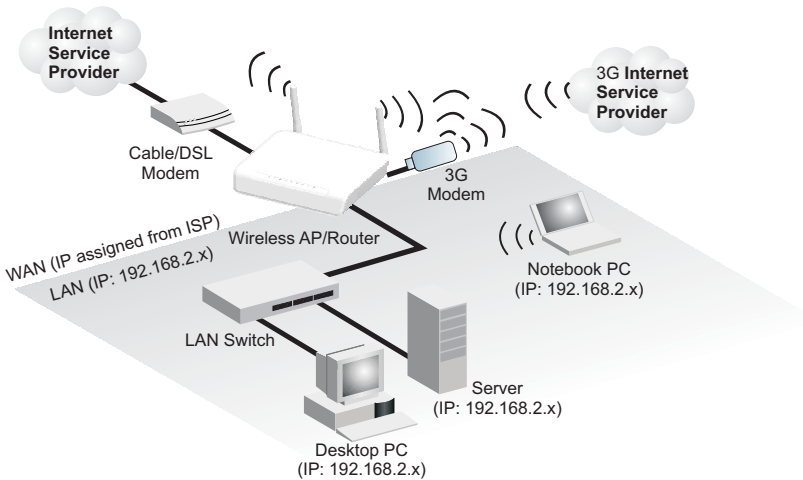


Figure 3-1. Operating as an Internet Gateway Router

The private local network, connected to the LAN port or wireless interface, provides a Dynamic Host Configuration Protocol (DHCP) server for allocating IP addresses to local PCs and wireless clients, and Network Address Translation (NAT) for mapping the multiple "internal" IP addresses to one "external" IP address.

The public external network, connected to the WAN port, supports DHCP client, Point-to-Point Protocol over Ethernet (PPPoE) and static IP for connection to an Internet service provider (ISP) through a cable or DSL modem.

The 3G Modem link can provide a backup Internet connection with automatic failover and fallback to the primary WAN connection.

## LAN Access Point

The wireless AP/Router can provide an access point service for an existing wired LAN, creating a wireless extension to the local network. The wireless AP/Router functions as purely an access point when set to Bridge Mode. When used in this mode, there are no gateway functions between the WAN port and the LAN and wireless interface.

A Wi-Fi wireless network is defined by its Service Set Identifier (SSID) or network name. Wireless clients that want to connect to a network must set their SSID to the same SSID of the network service. The wireless AP/Router supports two separate wireless interfaces, that is two SSIDs or Virtual Access Points (VAPs). The two VAP interfaces can be configured separately to support different security settings or other wireless functions.

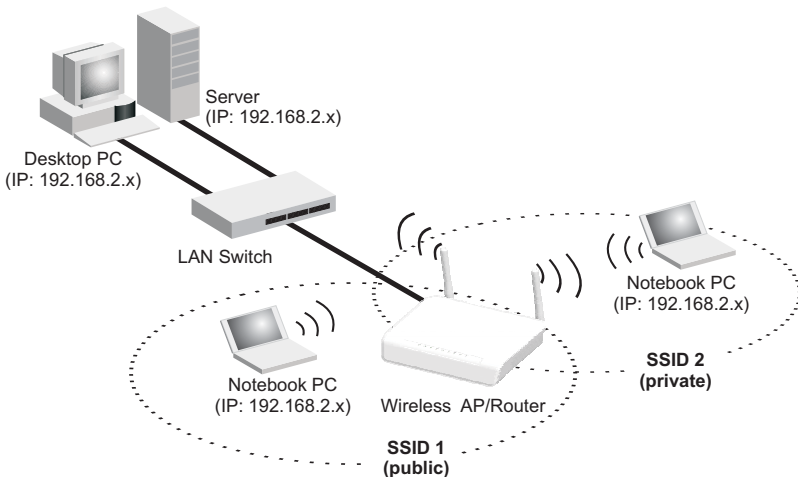
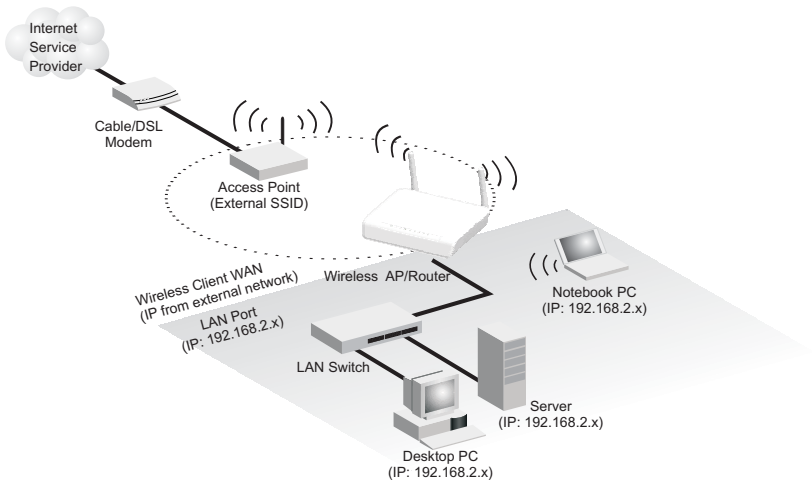


Figure 3-2. Operating as an Access Point

## Wireless Client

The wireless AP/Router can operate as a wireless client on one VAP interface, which enables a connection to another Wi-Fi network. When the wireless client option is enabled as a WAN connection, the client VAP interface functions as an external gateway WAN port. When the wireless client option is enabled as a LAN connection, the other VAP interface and LAN ports all function as the local network within the same IP subnet.



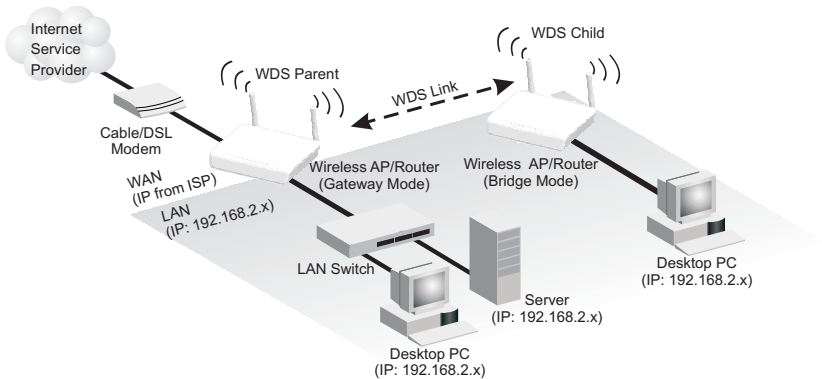
**Figure 3-3. Operating with a Wireless Client WAN Connection**

## Wireless Bridge

The IEEE 802.11 standard defines a Wireless Distribution System (WDS) for bridge connections between access points. The wireless AP/Router can use WDS to forward traffic on links between units.

A single WDS bridge link can be specified for the WLAN1 interface. One end of a link must be configured as the “WDS Parent” and the other as the “WDS Child.”

**Note:** The network domain of WDS child has to be the same as WDS parent.



**Figure 3-4. Operating as a Wireless Bridge**

# Chapter 4: Initial Configuration

---

The wireless AP/Router offers a user-friendly web-based management interface for the configuration of all the unit's features. Any PC directly attached to the unit can access the management interface using a web browser, such as Internet Explorer (version 6.0 or above).

This chapter describes the wireless AP/Router's configurable features, all of which may be accessed through the w

eb interface.

It is recommended to make initial configuration changes by connecting a PC directly to one of the wireless AP/Router's LAN ports. The wireless AP/Router has a default IP address of 192.168.2.1 and a subnet mask of 255.255.255.0. If your PC is set to "Obtain an IP address automatically" (that is, set as a DHCP client), you can connect immediately to the web interface. Otherwise, you must set your PC IP address to be on the same subnet as the wireless AP/Router (that is, the PC and wireless AP/Router addresses must both start 192.168.2.x).

To access the configuration menu, follow these steps:

1. Use your web browser to connect to the management interface using the default IP address of 192.168.2.1.
2. Log into the wireless AP/Router management interface by entering the default username "admin" and password "smcadmin", then click OK.

**Note:** It is strongly recommended to change the default user name and password the first time you access the web interface. For information on changing user names and passwords, See "Administrator Settings" on page 5-46.

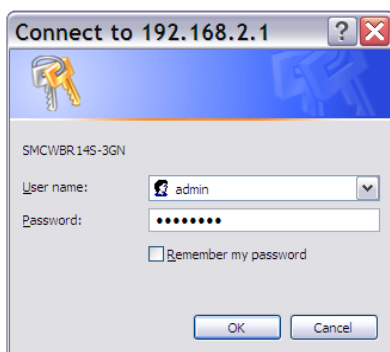


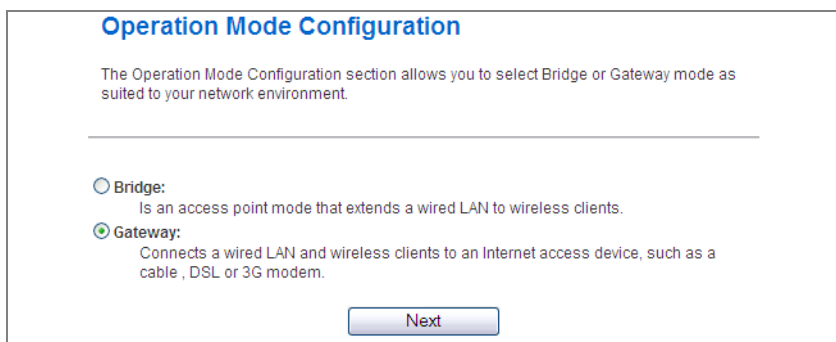
Figure 4-1. Login Page

## Using the Setup Wizard

There are only a few basic steps you need to set up the wireless AP/Router and provide a connection for network access for other wireless stations.

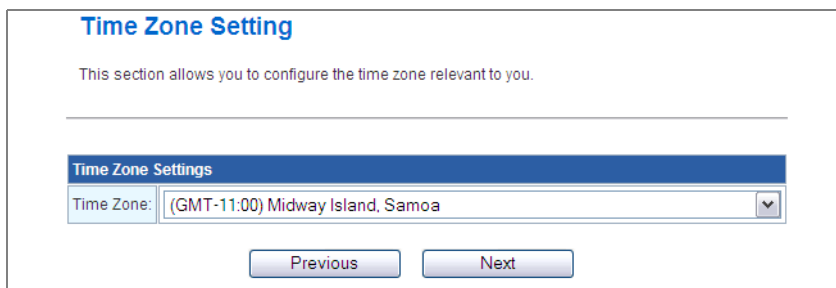
The Setup Wizard takes you through configuration procedures for the general network settings. Follow these steps:

1. **Launch the Setup Wizard** – Click “Setup Wizard” on the left side of the screen to enter the setup wizard page.
2. **Operation Mode Configuration** – Select the operation mode required for the network environment. Click “Next” to continue the setup.



**Figure 4-2. Setup Wizard - Operation Mode**

3. **Time Zone Settings** – Select a time zone according to where the device is operated. Click Next after completing the setup.



**Figure 4-3. Setup Wizard - Time Zone Settings**



4. **WAN Configuration** – Specifies the Internet connection parameters for the wireless AP/Router's WAN port. Click Next after completing the setup. The interface provides the facility for Dual WAN connections for purposes of backing up the main internet connection.

WAN Settings	
WAN Connection	<input type="radio"/> Static IP <input checked="" type="radio"/> DHCP <input type="radio"/> PPPoE <input type="radio"/> 3G <input type="radio"/> PPTP <input type="radio"/> L2TP <input type="radio"/> Bigpond <input type="radio"/> WiFi
Dual WAN	
Backup WAN	<input checked="" type="radio"/> None <input type="radio"/> Static IP <input type="radio"/> DHCP <input type="radio"/> PPPoE <input type="radio"/> 3G <input type="radio"/> PPTP <input type="radio"/> L2TP <input type="radio"/> Bigpond <input type="radio"/> WiFi
Common Settings	
WAN Ethernet MAC	<input checked="" type="radio"/> Original MAC (00:12:cf:9b:57:bc) <input type="radio"/> Manual Setting <input type="text" value="00:00:00:00:00:00"/> <input type="button" value="[MAC Clone]"/>
Set DNS Server	<input type="radio"/> Manually <input checked="" type="radio"/> Automatically

**Figure 4-4. Setup Wizard - WAN Configuration**

The displayed items on this page are described in the sections that follow:

**WAN Connection** — By default, the access point WAN port is configured with DHCP enabled. After you have network access to the access point, you can use the web browser interface to modify the initial IP configuration, if needed. The options are Static IP, DHCP, PPPoE, 3G, PPTP, L2TP, Bigpond and WiFi. Each option changes the parameters displayed below it. (Default: DHCP)

**Backup WAN** — A backup failsafe connection for the WAN port (Dual WAN.) Options are determined by the WAN Connection selected. Backup WAN and WAN Connection parameters are identical for each of their eight equivalent modes: Static IP, DHCP, PPPoE, 3G, PPTP, L2TP, Bigpond and WiFi. (Default: None)

- **WAN detect IP address:** IP address used to detect if the primary WAN connection is on or off.
- **Backup WAN detect IP address:** IP address used to detect if the backup WAN connection is on or off.
- **ICMP detect timeout:** Set the ICMP (Ping) time out.
- **Main WAN Fallback:** When the Backup WAN is enabled, Main WAN Fallback can be enabled to periodically search the primary WAN port for recovery of the lost connection. If connection is re-established the connection switches back to the primary WAN connection. (Default: Disabled)

**Note:** When 3G is selected as the primary WAN Connection the Backup WAN must be a DSL/Cable connection.

## Common Settings

The common settings for each WAN Connection mode are identical and are described in the section below.

Common Settings	
WAN Ethernet MAC	<input checked="" type="radio"/> Original MAC (00:12:cf:9b:57:bc) <input type="radio"/> Manual Setting <input type="text" value="00:00:00:00:00:00"/> [MAC Clone]
Set DNS Server	<input checked="" type="radio"/> Manually <input type="radio"/> Automatically
Primary DNS Server	<input type="text" value="168.95.1.1"/>
Secondary DNS Server	<input type="text" value="168.95.192.1"/>

**Figure 4-5. Common Settings**

**WAN Ethernet MAC** — Some ISPs limit Internet connections to a specified MAC address of one PC. This setting allows you to manually change the MAC address of the wireless AP/Router's WAN interface to match the PC's MAC address provided to your ISP for registration. You can enter the registered MAC address manually by typing it in the boxes provided. Otherwise, connect only the PC with the registered MAC address to the wireless AP/Router, then click the "MAC Clone." (Default: Original MAC)

**Note:** If you are unsure of the PC MAC address originally registered by your ISP, call your ISP and request to register a new MAC address for your account. Register the default MAC address of the wireless AP/Router.

- **Original MAC** – Specifies a preset MAC address to uniquely identify the unit.
- **Manual Setting** – Configures a specific MAC address to use for the WAN connection.
- **Set DNS Server** – Allows manual or automatic selection of DNS servers.
- **Primary DNS Server:** The IP address of the Primary Domain Name Server on the network. A DNS maps numerical IP addresses to domain names and can be used to identify network hosts by familiar names instead of the IP addresses. If you have one or more DNS servers located on the local network, type the IP addresses in the text fields provided. Otherwise, leave the addresses as all zeros (0.0.0.0).
- **Secondary DNS Server:** The IP address of the Secondary Domain Name Server on the network.

## Static IP

Configures a static IP for the WAN port.

WAN Settings	
WAN Connection	<input checked="" type="radio"/> Static IP <input type="radio"/> DHCP <input type="radio"/> PPPoE <input type="radio"/> 3G <input type="radio"/> PPTP <input type="radio"/> L2TP <input type="radio"/> Bigpond <input type="radio"/> WiFi
Dual WAN	
Backup WAN	<input checked="" type="radio"/> None <input type="radio"/> Static IP <input type="radio"/> DHCP <input type="radio"/> PPPoE <input type="radio"/> 3G <input type="radio"/> PPTP <input type="radio"/> L2TP <input type="radio"/> Bigpond <input type="radio"/> WiFi
Static IP	
IP Address	<input type="text" value="0.0.0.0"/>
Subnet Mask	<input type="text" value="255.255.255.0"/> <input type="button" value="v"/>
Default Gateway	<input type="text" value="0.0.0.0"/>
Common Settings	
WAN Ethernet MAC	<input checked="" type="radio"/> Original MAC (00:12:cf:9b:57:bc) <input type="radio"/> Manual Setting <input type="text" value="00:00:00:00:00:00"/> <input type="button" value="[MAC Clone]"/>
Primary DNS Server	<input type="text" value="168.95.1.1"/>
Secondary DNS Server	<input type="text" value="168.95.192.1"/>

**Figure 4-6. Setup Wizard - WAN Static IP**

- **IP Address:** The IP address of the wireless AP/Router. Valid IP addresses consist of four decimal numbers, 0 to 255, separated by periods.
- **Subnet Mask:** The mask that identifies the host address bits used for routing to specific subnets.
- **Default Gateway:** The IP address of the gateway router for the wireless AP/Router, which is used if the requested destination address is not on the local subnet.

## DHCP

Enables Dynamic Host Configuration Protocol (DHCP) for the WAN port. This setting allows the wireless AP/Router to automatically obtain an IP address from a DHCP server normally operated by the Internet Service Provider (ISP).

WAN Settings	
WAN Connection	<input type="radio"/> Static IP <input checked="" type="radio"/> DHCP <input type="radio"/> PPPoE <input type="radio"/> 3G <input type="radio"/> PPTP <input type="radio"/> L2TP <input type="radio"/> Bigpond <input type="radio"/> WiFi
Dual WAN	
Backup WAN	<input checked="" type="radio"/> None <input type="radio"/> Static IP <input type="radio"/> DHCP <input type="radio"/> PPPoE <input type="radio"/> 3G <input type="radio"/> PPTP <input type="radio"/> L2TP <input type="radio"/> Bigpond <input type="radio"/> WiFi
Common Settings	
WAN Ethernet MAC	<input checked="" type="radio"/> Original MAC (00:12:cf:9b:57:bc) <input type="radio"/> Manual Setting <input type="text" value="00:00:00:00:00:00"/> <input type="button" value="[MAC Clone]"/>
Set DNS Server	<input checked="" type="radio"/> Manually <input type="radio"/> Automatically
Primary DNS Server	<input type="text" value="168.95.1.1"/>
Secondary DNS Server	<input type="text" value="168.95.192.1"/>

Figure 4-7. Setup Wizard - WAN DHCP

## PPPoE

Enable the wireless AP/Router IP address to be assigned automatically from an Internet service provider (ISP) through an ADSL modem using Point-to-Point Protocol over Ethernet (PPPoE).

WAN Settings	
WAN Connection	<input type="radio"/> Static IP <input type="radio"/> DHCP <input checked="" type="radio"/> PPPoE <input type="radio"/> 3G <input type="radio"/> PPTP <input type="radio"/> L2TP <input type="radio"/> Bigpond <input type="radio"/> WiFi
Dual WAN	
Backup WAN	<input checked="" type="radio"/> None <input type="radio"/> Static IP <input type="radio"/> DHCP <input type="radio"/> PPPoE <input type="radio"/> 3G <input type="radio"/> PPTP <input type="radio"/> L2TP <input type="radio"/> Bigpond <input type="radio"/> WiFi
PPPoE	
PPPoE Network Mode	<input type="radio"/> Static IP <input checked="" type="radio"/> DHCP
PPPoE Username	PPPOE_USERNAME
PPPoE Password	●●●●●●●●●●
Common Settings	
WAN Ethernet MAC	<input checked="" type="radio"/> Original MAC (00:12:cf:9b:57:bc) <input type="radio"/> Manual Setting <input type="text" value="00:00:00:00:00:00"/> <input type="button" value="[MAC Clone]"/>
Set DNS Server	<input checked="" type="radio"/> Manually <input type="radio"/> Automatically
Primary DNS Server	168.95.1.1
Secondary DNS Server	168.95.192.1

Figure 4-8. Setup Wizard - WAN PPPoE

- **PPPoE Network Mode:** Sets a PPPoE network mode. (Default: DHCP)
- **PPPoE IP Address:** Sets the static IP address. (Default: 0.0.0.0, available when PPPoE Network Mode is set to static IP.)
- **PPPoE Username:** Sets the PPPoE user name for the WAN port. (Default: PPPOE\_USERNAME; Range: 1~32 characters)
- **PPPoE Password:** Sets a PPPoE password for the WAN port. (Default: PPPOE\_PASSWORD; Range: 1~32 characters)

## 3G

Enables a 3G/3.5G wide-area wireless cellular link on the WAN port using an optional USB modem.

**Note:** To use this option you need to first connect a 3G/3.5G USB modem to the USB port on the back of the unit and have registered an account with a cellular operator.

The following example shows the WAN function enabled with 3G. An authenticated 3G connection displays the message “Authenticated successfully” beneath the PIN code if the 3G Modem PIN code have been authenticated successfully.

WAN Settings	
WAN Connection	<input type="radio"/> Static IP <input type="radio"/> DHCP <input type="radio"/> PPPoE <input checked="" type="radio"/> 3G <input type="radio"/> PPTP <input type="radio"/> L2TP <input type="radio"/> Bigpond <input type="radio"/> WiFi
<b>Dual WAN</b>	
Backup WAN	<input checked="" type="radio"/> None <input type="radio"/> Static IP <input type="radio"/> DHCP <input type="radio"/> PPPoE <input type="radio"/> 3G <input type="radio"/> PPTP <input type="radio"/> L2TP <input type="radio"/> Bigpond <input type="radio"/> WiFi
<b>3G</b>	
Pin Code Protect	<input checked="" type="checkbox"/> Enable <input type="text" value="0000"/> <span style="color: blue;">Authenticated successfully</span>
Dial Code	<input type="text" value="*99#"/>
APN Service	<input type="text" value="internet"/>
3G Username	<input type="text" value="3G_USERNAME"/>
3G Password	<input type="password" value="••••••••"/>
Connect Type	Auto Connect <input type="button" value="v"/>
3G Max Idle Time	<input type="text" value="300"/> seconds. (default:300)
Budget Control	<input type="checkbox"/> Enable (default:disabled)
<b>Common Settings</b>	
WAN Ethernet MAC	<input checked="" type="radio"/> Original MAC (00:12:cf:9b:57:bc) <input type="radio"/> Manual Setting <input type="text" value="00:00:00:00:00:00"/> <span style="color: blue;">[MAC Clone]</span>
Set DNS Server	<input type="radio"/> Manually <input checked="" type="radio"/> Automatically

**Figure 4-9. Setup Wizard - WAN 3G Authenticated**

The following cautionary message will appear each time you save your settings.



**Figure 4-10. Setup Wizard - WAN 3G PIN Code Warning**

An unauthenticated connection will display the message “Not dial yet” beneath the PIN code, as shown in the following example.

WAN Settings	
WAN Connection	<input type="radio"/> Static IP <input type="radio"/> DHCP <input type="radio"/> PPPoE <input checked="" type="radio"/> 3G <input type="radio"/> PPTP <input type="radio"/> L2TP <input type="radio"/> Bigpond <input type="radio"/> WiFi
Dual WAN	
Backup WAN	<input checked="" type="radio"/> None <input type="radio"/> Static IP <input type="radio"/> DHCP <input type="radio"/> PPPoE <input type="radio"/> 3G <input type="radio"/> PPTP <input type="radio"/> L2TP <input type="radio"/> Bigpond <input type="radio"/> WiFi
3G	
Pin Code Protect	<input checked="" type="checkbox"/> Enable <input type="text" value="1234"/> <span style="color: red;">Not dialed yet</span>
Dial Code	<input type="text" value="*99#"/>
APN Service	<input type="text" value="internet"/>
3G Username	<input type="text" value="3G_USERNAME"/>
3G Password	<input type="password" value="••••••••"/>
Connect Type	<input type="text" value="Auto Connect"/> ▼
3G Max Idle Time	<input type="text" value="300"/> seconds. (default:300)
Budget Control	<input type="checkbox"/> Enable (default:disabled)
Common Settings	
WAN Ethernet MAC	<input checked="" type="radio"/> Original MAC (00:12:cf:9b:57:bc) <input type="radio"/> Manual Setting <input type="text" value="00:00:00:00:00:00"/> [MAC Clone]
Set DNS Server	<input type="radio"/> Manually <input checked="" type="radio"/> Automatically

**Figure 4-11. Setup Wizard - WAN 3G Unauthenticated**

- **Pin Code Protect:** Enables the use of a PIN code (personal identification number) to encrypt access to the wireless 3G connection. Some service providers do not require PIN code authentication. If a PIN code is not required for your 3G/3.5G modem, disable this function. (Default: Enabled) Specifies a PIN code number that corresponds with that set on your 3G/3.5G USB modem and displays the status of the 3G connection.
  - **Not dial yet:** Indicates that the 3G is not dialed and PIN is not authenticated yet.
  - **Authenticated successfully:** Indicates that the 3G connection has authenticated successfully.

- **Dial Code:** A dialled access code that connects the USB device to the service provider.
- **APN Service:** The name that uniquely identifies the cellular operator, access point name (APN).
- **3G Username:** The username of the account registered with the service provider.
- **3G Password:** The password of the account registered with the service provider.
- **Connect Type:** Selects the connection type as Keep Alive or Auto Connect. (Default: Auto Connect)
- **3G Max Idle Time:** The maximum length of inactive time the unit will stay connected to the 3G service provider before disconnecting. This feature only works when Connect Type is set to "Auto-Connect." (Default: 300 seconds)
- **Budget Control:** You can set a monthly limit on time or the total data. For more details, please refer to the following table.

Budget Control	<input checked="" type="checkbox"/> Enable (default:disabled)		
Budget Criterion	<input type="checkbox"/> Time Budget	0 hours	per month
	<input type="checkbox"/> Data Budget	2 MBytes	Download per month
Budget Policy	Actions if Over Budget		
	<input checked="" type="checkbox"/> Drop Current Cellular connection	<input checked="" type="checkbox"/> Disallow New Cellular connection	
	Trigger by Limit Budget		
	0 % of the time budget	0 % of the data budget	
	<input checked="" type="checkbox"/> E-mail Alert	will recur every 10 minutes	
Budget Counter	Reset on 1st day per month		
E-mail Settings	SMTP Authentication	LOGIN	
	Username		
	Password		
	Mail Server		
	Mail Sender		
	Mail Recipient		

Figure 4-12. 3G Budget Control

- **Budget Criterion:**
  - **By Time:** Specify the amount of time (in hours) that can be used per month.
  - **By Data:** Specify how much Download/Upload data (in MBytes) can be transmitted per month.



- **Budget Policy:** Enable or disable the action “Drop Current Cellular connection” or “Disallow New Cellular connection” if over budget.
  - **Trigger by Limit Budget:**
    - **By Time:** Set the specified percentage of time limit.
    - **By Data:** Set the specified percentage of data limit.
  - **Action if Over Budget:** Send an e-mail alert at the specified interval in minutes. The wireless AP/Router can use SMTP (Simple Mail Transfer Protocol) to send email messages when triggered by the specified budget policy limits.
    - **SMTP Authentication:** Specifies the user name and password for authentication or login to the SMTP server. (Options: Plain, Login, or disabled.)
    - **Mail Server:** URL of the SMTP mail server that will send the alert messages.
    - **Mail Sender:** Specifies an e-mail address on the SMTP server that can send alert messages.
    - **Mail Recipient:** The e-mail address of the recipient of the alert messages.
- **Budget Counter:** Select the date on which the AP/Router resets the budget every month.

## PPTP

Enables the Point-to-Point Tunneling Protocol (PPTP) for implementing virtual private networks. The service is provided in many European countries.

WAN Settings	
WAN Connection	<input type="radio"/> Static IP <input type="radio"/> DHCP <input type="radio"/> PPPoE <input type="radio"/> 3G <input checked="" type="radio"/> PPTP <input type="radio"/> L2TP <input type="radio"/> Bigpond <input type="radio"/> WiFi
Dual WAN	
Backup WAN	<input checked="" type="radio"/> None <input type="radio"/> Static IP <input type="radio"/> DHCP <input type="radio"/> PPPoE <input type="radio"/> 3G <input type="radio"/> PPTP <input type="radio"/> L2TP <input type="radio"/> Bigpond <input type="radio"/> WiFi
PPTP	
PPTP Network Mode	<input type="radio"/> Static IP <input checked="" type="radio"/> DHCP
PPTP Username	<input type="text" value="PPTP_USERNAME"/>
PPTP Password	<input type="password" value="••••••••"/>
Common Settings	
WAN Ethernet MAC	<input checked="" type="radio"/> Original MAC (00:12:cf:9b:57:bc) <input type="radio"/> Manual Setting <input type="text" value="00:00:00:00:00:00"/> <input type="button" value="[MAC Clone]"/>
Set DNS Server	<input checked="" type="radio"/> Manually <input type="radio"/> Automatically
Primary DNS Server	<input type="text" value="168.95.1.1"/>
Secondary DNS Server	<input type="text" value="168.95.192.1"/>

Figure 4-13. Setup Wizard - WAN PPTP

- **PPTP Network Mode:** Sets a PPTP network mode. (Default: DHCP)
- **IP Address:** Sets the static IP address. (Default: 0.0.0.0, available when PPTP Network Mode is set to static IP.)
- **Subnet Mask:** Sets the static IP subnet mask. (Default: 255.255.255.0, available when PPTP Network Mode is set to static IP.)
- **Default Gateway:** The IP address of the gateway router for the wireless AP/ Router, which is used if the requested destination address is not on the local subnet.
- **PPTP Username:** Sets the PPTP user name for the WAN port. (Default: PPTP\_USERNAME; Range: 1~32 characters)
- **PPTP Password:** Sets a PPTP password for the WAN port. (Default: PPTP\_PASSWORD; Range: 1~32 characters)

## L2TP

Enables the Layer Two Tunneling Protocol (L2TP) for implementing virtual private networks. The service is provided in many European countries.

WAN Settings	
WAN Connection	<input type="radio"/> Static IP <input type="radio"/> DHCP <input type="radio"/> PPPoE <input type="radio"/> 3G <input type="radio"/> PPTP <input checked="" type="radio"/> L2TP <input type="radio"/> Bigpond <input type="radio"/> WiFi
Dual WAN	
Backup WAN	<input checked="" type="radio"/> None <input type="radio"/> Static IP <input type="radio"/> DHCP <input type="radio"/> PPPoE <input type="radio"/> 3G <input type="radio"/> PPTP <input type="radio"/> L2TP <input type="radio"/> Bigpond <input type="radio"/> WiFi
L2TP	
L2TP Network Mode	<input checked="" type="radio"/> Static IP <input type="radio"/> DHCP
IP Address	<input type="text" value="0.0.0.0"/>
Subnet Mask	<input type="text" value="255.255.255.0"/> ▾
Default Gateway	<input type="text" value="0.0.0.0"/>
L2TP Username	<input type="text" value="L2TP_USERNAME"/>
L2TP Password	<input type="password" value="●●●●●●●●"/>
Common Settings	
WAN Ethernet MAC	<input checked="" type="radio"/> Original MAC (00:12:cf:9b:57:bc) <input type="radio"/> Manual Setting <input type="text" value="00:00:00:00:00:00"/> [MAC Clone]
Set DNS Server	<input checked="" type="radio"/> Manually <input type="radio"/> Automatically
Primary DNS Server	<input type="text" value="168.95.1.1"/>
Secondary DNS Server	<input type="text" value="168.95.192.1"/>

Figure 4-14. Setup Wizard - WAN L2TP

- **L2TP Network Mode:** Sets a L2TP network mode. (Default: DHCP)
- **IP Address:** Sets the static IP address. (Default: 0.0.0.0, available when L2TP Network Mode is set to static IP.)
- **Subnet Mask:** Sets the static IP subnet mask. (Default: 255.255.255.0, available when L2TP Network Mode is set to static IP.)
- **Default Gateway:** The IP address of the gateway router for the wireless AP/ Router, which is used if the requested destination address is not on the local subnet.
- **L2TP Username:** Sets the L2TP user name for the WAN port. (Default: L2TP\_USERNAME; Range: 1~32 characters)
- **L2TP Password:** Sets a L2TP password for the WAN port. (Default: L2TP\_PASSWORD; Range: 1~32 characters)

## Bigpond

Enables the settings of Telstra Bigpond network service in Australia.

WAN Settings	
WAN Connection	<input type="radio"/> Static IP <input type="radio"/> DHCP <input type="radio"/> PPPoE <input type="radio"/> 3G <input type="radio"/> PPTP <input type="radio"/> L2TP <input checked="" type="radio"/> Bigpond <input type="radio"/> WiFi
<b>Dual WAN</b>	
Backup WAN	<input checked="" type="radio"/> None <input type="radio"/> Static IP <input type="radio"/> DHCP <input type="radio"/> PPPoE <input type="radio"/> 3G <input type="radio"/> PPTP <input type="radio"/> L2TP <input type="radio"/> Bigpond <input type="radio"/> WiFi
<b>Bigpond</b>	
Bigpond Username	<input type="text" value="BIGPOND_USERNAME"/>
Bigpond Password	<input type="password" value="••••••••••"/>
Bigpond Authentication Server	<input type="text" value="sm-server"/>
<b>Common Settings</b>	
WAN Ethernet MAC	<input checked="" type="radio"/> Original MAC (00:12:cf:9b:57:bc) <input type="radio"/> Manual Setting <input type="text" value="00:00:00:00:00:00"/> <input type="button" value="[MAC Clone]"/>
Set DNS Server	<input checked="" type="radio"/> Manually <input type="radio"/> Automatically
Primary DNS Server	<input type="text" value="168.95.1.1"/>
Secondary DNS Server	<input type="text" value="168.95.192.1"/>

Figure 4-15. Setup Wizard - WAN Bigpond

- **Bigpond Username:** Sets the Bigpond user name for the WAN port. (Default: BIGPOND\_USERNAME; Range: 1~32 characters)
- **Bigpond Password:** Sets a Bigpond password for the WAN port. (Default: BIGPOND\_USERNAME; Range: 1~32 characters)
- **Bigpond Authentication Server:** Specifies a Bigpond authentication server. (Default: sm-server)

## WiFi

Enables a WAN connection to a normal remote AP over a wireless 802.11b/g/n connection. For this WAN setting, the wireless AP/Router operates as a Wi-Fi client to the remote AP.

WAN Settings	
WAN Connection	<input type="radio"/> Static IP <input type="radio"/> DHCP <input type="radio"/> PPPoE <input type="radio"/> 3G <input type="radio"/> PPTP <input type="radio"/> L2TP <input type="radio"/> Bigpond <input checked="" type="radio"/> WiFi
Dual WAN	
Backup WAN	<input checked="" type="radio"/> None <input type="radio"/> Static IP <input type="radio"/> DHCP <input type="radio"/> PPPoE <input type="radio"/> 3G <input type="radio"/> PPTP <input type="radio"/> L2TP <input type="radio"/> Bigpond <input type="radio"/> WiFi
Wireless Client	
Wireless MTU	<input type="text" value="1460"/> bytes
Wireless MRU	<input type="text" value="1460"/> bytes
Wireless Network Mode	<input type="radio"/> Static IP <input checked="" type="radio"/> DHCP
Common Settings	
WAN Ethernet MAC	<input checked="" type="radio"/> Original MAC (00:12:CF:C8:DA:34) <input type="radio"/> Manual Setting <input type="text" value="00:00:00:00:00:00"/> <a href="#">[MAC Clone]</a>
Ping from WAN	<input type="checkbox"/> Allowed
Set DNS Server	<input type="radio"/> Manually <input checked="" type="radio"/> Automatically

**Figure 4-16. Setup Wizard - WAN WiFi**

- **Wireless MTU:** Sets the maximum packet size that the WAN port may transmit. The Maximum Transmission Unit (MTU) is expressed in bytes. (Default: 1460 bytes)
- **Wireless MRU:** Sets the maximum packet size that the unit may receive from other units on the network and sends a message to inform them of the set threshold. Maximum Receive Unit (MRU) is expressed in bytes. (Default: 14602 bytes)

**Note:** Only change the default MTU and MRU values if specifically instructed by the wireless service provider.

- **Wireless Network Mode:** Sets the wireless network mode to Static IP or DHCP. (Default: DHCP)

**Note:** For detailed AP Client Settings information, see “AP Client Settings” on page 2-35.

5. **WLAN Settings** – Enables the wireless interface, selects the operating channel and configures SSIDs for both VAPs. Click Next after completing the setup.

Basic Settings	
WLAN	<input checked="" type="checkbox"/> Enable
WLAN Mode	802.11b/g/n Mixed ▼
WLAN Frequency	2.412GHz (channel 1) ▼
SSID Number Supported	1 ▼
WLAN1 SSID	SMC

**WLAN Mode:**  
 802.11b/g/n Mixed: allow all 802.11b/g/n clients connection  
 802.11b/g Mixed: allow both 802.11b and 802.11g clients connection  
 802.11b: only allow 802.11b clients connection  
 802.11g: only allow 802.11g clients connection  
 802.11n: only allow 802.11n clients connection

**Frequency:**  
 The radio channel used to communicate with wireless clients.

**SSID:**  
 The Service Set Identifier (SSID) name of the wireless network service provided by the VAP.

Prev Next

**Figure 4-17. Setup Wizard - WLAN Configuration**

The displayed items on this page can be described as follows:

- **WLAN** – Enables the communication for the VAP wireless interface. (Default: Enabled)
- **WLAN Mode** – Defines the radio mode for the VAP interface. See “WLAN Mode” on page 5-18 for more information. (Default: 802.11b/g/n Mixed)
- **WLAN Frequency** – The radio channel that the wireless AP/Router uses to communicate with wireless clients. When multiple access points are deployed in the same area, set the channel on neighboring access points at least five channels apart to avoid interference with each other. For example, you can deploy up to three access points in the same area using channels 1, 6, 11. Note that wireless clients automatically set the channel to the same as that used by the wireless AP/Router to which it is linked. Selecting Auto Select enables the wireless AP/Router to automatically select an unoccupied radio channel. (The supported channels are dependent on the country code setting.)
- **SSID Number Supported** – The number of wireless network interfaces (SSIDs) supported on the device. (Default: 1; Options: 1 or 2)
- **WLAN1 SSID / WLAN2 SSID** – The name of the wireless network service provided by the VAP. Clients that want to connect to the network must set their SSID to the same as that of the VAP interface. (Default: “SMC” for WLAN1; “SMC1” for WLAN2; Range: 1-32 characters)

## 4 Initial Configuration

6. **WLAN1/WLAN2 Security** — Sets the wireless security encryption key for the wireless network.

WLAN1 Security	
Authentication Mode	WPA/WPA2 Enterprise ▾
Encryption Type	TKIP ▾

RADIUS Settings	
RADIUS Server Network	WAN ▾
RADIUS Server Address	0.0.0.0
RADIUS Server Port	1812
RADIUS Server Key	

WDS Setting	
WDS	Disabled ▾ (default:disabled)

AP Client Setting	
AP Client Support	<input type="checkbox"/> Enable

[Prev](#) [Finish & Reboot](#)

Figure 4-18. Setup Wizard - WLAN1 Security

**Authentication Mode** – Configures the authentication mode used by clients. See “Authentication Mode” on page 5-30 for more information. (WLAN1/WLAN2 Defaults: Open)

7. Click Finish & Reboot after completing the configuration changes. Note that all configuration changes are not saved until the Setup Wizard is completed and the system has restarted.

When the system restarts, a countdown window displays for 60 seconds.

### Setup Wizard

<b>Reboot</b>
Please wait 53 seconds for reboot...

Figure 4-19. Implementing Wizard Settings

# Chapter 5: System Configuration

---

The wireless AP/Router offers a user-friendly web-based management interface for the configuration of all the unit's features. Any PC directly attached to the unit can access the management interface using a web browser, such as Internet Explorer (version 6.0 or above).

This chapter describes the wireless AP/Router's configurable features, all of which may be accessed through the web interface.

**Note:** Before accessing the web interface, first set the device to Router or AP Mode using the switch on the bottom panel. Note that the unit reboots when the operating mode is changed.

It is recommended to make initial configuration changes by connecting a PC directly to one of the wireless AP/Router's LAN ports. The wireless AP/Router has a default IP address of 192.168.2.1 and a subnet mask of 255.255.255.0. If your PC is set to "Obtain an IP address automatically" (that is, set as a DHCP client), you can connect immediately to the web interface. Otherwise, you must set your PC IP address to be on the same subnet as the wireless AP/Router (that is, the PC and wireless AP/Router addresses must both start 192.168.2.x).

To access the configuration menu, follow these steps:

1. Use your web browser to connect to the management interface using the default IP address of 192.168.2.1.
2. Log into the wireless AP/Router management interface by entering the default username "admin" and password also "smcadmin," then click Login.

**Note:** It is strongly recommended to change the default user name and password the first time you access the web interface. For information on changing user names and passwords, See "Admin Accounts and Remote Administration" on page 5-60

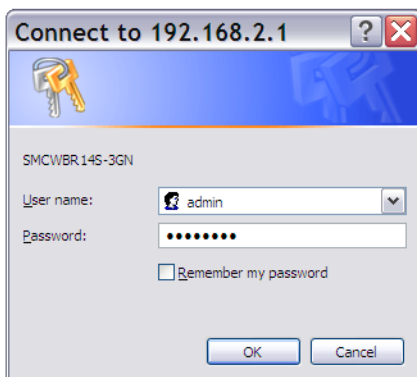


Figure 5-1 Login Page

The System Information page displays the System, Management IP, WAN, LAN, WLAN, and WDS settings.

## SMCWBR14S-3GN Wireless Router

Select Language  
English

### System Status

This section displays various status information of the device.

System Info	
Software Version	v1.1.3.1
Hardware Version	R01
System Up Time	0 day, 0 hour, 28 mins
Operation Mode	Router Mode
Internet Configurations	
Connected Type	DHCP (Master)
WAN IP Address	
Subnet Mask	
Default Gateway	
Primary Domain Name Server	
Secondary Domain Name Server	
MAC Address	00:22:2D:81:A9:E5
Local Network	
Local IP Address	192.168.2.1
Local Netmask	255.255.255.0
MAC Address	00:22:2D:81:A9:E4

**Figure 5-2 System Information (Router mode)**



The information in this chapter is organized to reflect the structure of the web management screens for easy reference.

The Configuration pages include the options in the table below. For details on configuration for each feature, see the corresponding page number.

**Note:** The displayed pages and settings may differ depending on whether the unit is in Router or AP Mode.

<b>Table 5-1. Configuration Options</b>			
<b>Menu</b>	<b>Description</b>	<b>Mode</b>	<b>Page</b>
<i>Network Settings</i>			5-4
Management IP	Specifies an IP and subnet mask for management access	AP	5-4
WAN	Configures settings for the wide area network	Router	5-5
LAN	Sets the unit's IP address and enables DNS	Router	5-19
QoS	Configures Quality of Service (QoS) for wireless traffic	Router	5-20
<i>Wireless Settings</i>			5-22
Basic Settings	Configures wireless transmission method, frequency and SSID	Both	5-23
Advanced Settings	Configures advanced wireless transmission values	Both	5-25
WLAN Security/ WDS/ApClient	Configures radio security parameters for the VAP interface	Both	5-27
WLAN MAC ACL	Configures MAC ACLs for the VAP interface	Both	5-37
WPS	Configures WPS settings	Both	5-39
<i>Routing</i>			5-41
Static Route	Configures IP settings for routing of traffic through the AP/ Router from another subnet	Router	5-41
Dynamic Route	Enables RIP protocols for the LAN and WAN ports.	Router	5-42
Multicast Routing	Enables multicast routing.	Router	5-43
<i>Firewall</i>			5-44
NAT	Configures NAT settings	Router	5-44
Packet Filter	Configures WAN, LAN and MAC packet filtering	Router	5-48
URL Filter	Configures web site address filtering	Router	5-50
Security	Enables intrusion detection	Router	5-51
<i>Services</i>			5-52
DHCP	Configures the DHCP server settings	Router	5-52
UPnP	Enables UPnP	Router	5-54
DDNS	Configures Dynamic DNS settings	Router	5-55
System Log Settings	Enables system logs	Both	5-56

Table 5-1. Configuration Options			
Menu	Description	Mode	Page
Date/Time	Configures NTP settings	Both	5-57
Ping Test	Performs a loopback test on a specified IP address	Both	5-59
<i>Management</i>			5-60
Admin	Enables remote administration and configures user accounts for control of the unit	Both	5-60
Config	Backups and restores the configuration data and restores the factory defaults	Both	5-62
Firmware	Upgrades system software from a local file and enables provisioning updates	Both	5-63
<i>Information</i>			5-63
System Information	Displays the current system status	Both	5-63
Routing Table	Displays information on configured routes	Router	5-66
Packet Statistics	Displays received and sent packet statistics	Both	5-67
System Log	Displays the system message log	Both	5-68
3G Access History	Displays the 3G access history.	Both	5-69

## Network Settings

The Network Settings pages allow you to manage basic system configuration settings.

**Note:** In AP mode, the wireless AP/Router's Network Settings options are significantly reduced.

### Management IP

Assigns an IP address for connecting to the wireless AP/Router. Click on "Network Settings" followed by "Management IP."

**Management IP Settings**

Management IP Address	<input type="text" value="192.168.2.1"/>
Subnet Mask	<input type="text" value="255.255.255.0"/> ▼

**Figure 5-3 IP Settings (AP mode)**

- **Management IP Address** – Specifies an IP address for management of the wireless AP/Router. Valid IP addresses consist of four decimal numbers, 0 to 255, separated by periods. (Default: 192.168.2.1.)
- **Subnet Mask** – Indicates the local subnet mask. Select the desired mask from the drop down menu. (Default: 255.255.255.0)

## WAN Settings

Specifies the Internet connection parameters. Click on “Network Settings” followed by “WAN.”

### WAN Connection

By default, the access point WAN port is configured with DHCP enabled. After you have network access to the access point, you can use the web browser interface to modify the initial IP configuration, if needed. The options are Static IP, DHCP, PPPoE, 3G, PPTP, L2TP, Bigpond and WiFi. Each option changes the parameters below it. (Default: DHCP)

### Backup WAN

A backup failsafe connection for the WAN port (Dual WAN.) Options are determined by the WAN Connection selected. Backup WAN and WAN Connection parameters are identical for each of their eight equivalent modes: Static IP, DHCP, PPPoE, 3G, PPTP, L2TP, Bigpond and WiFi. (Default: None)

- **Main WAN Fallback:** When the Backup WAN is enabled, Main WAN Fallback can be enabled to periodically search the primary WAN port for recovery of the lost connection. If connection is re-established the connection switches back to the primary WAN connection. (Default: Disabled)

**Note:** When 3G is selected as the primary WAN Connection, the Backup WAN cannot be set to 3G also.

## Common Settings

Common Settings are the same for each WAN settings. This section describes the common parameters.

Common Settings	
WAN Ethernet Speed	Auto-Negotiated <input type="button" value="v"/> (default:Auto-Negotiated)
WAN Ethernet MAC	<input checked="" type="radio"/> Original MAC (00:12:cf:9b:57:bc) <input type="radio"/> Manual Setting <input type="text" value="00:00:00:00:00:00"/> [MAC Clone]
Ping from WAN	<input type="checkbox"/> Allowed
Set DNS Server	<input checked="" type="radio"/> Manually <input type="radio"/> Automatically
Primary DNS Server	<input type="text" value="168.95.1.1"/>
Secondary DNS Server	<input type="text" value="168.95.192.1"/>

**Figure 5-4 WAN Common Settings (Router Mode)**

**WAN Ethernet Speed** — Configures the WAN Ethernet connection speed. (Default: Auto-Negotiated)

- **Auto-Negotiated** – Enables auto-negotiation.
- **100Mbps, Full-Duplex** – Forces 100 Mbps full-duplex operation.
- **100Mbps, Half-Duplex** – Forces 100 Mbps half-duplex operation.
- **10Mbps, Full-Duplex** – Forces 10 Mbps full-duplex operation.
- **10Mbps, Half-Duplex** – Forces 10 Mbps half-duplex operation.

**WAN Ethernet MAC** — Some ISPs limit Internet connections to a specified MAC address of one PC. This setting allows you to manually change the MAC address of the wireless AP/Router's WAN interface to match the PC's MAC address provided to your ISP for registration. You can enter the registered MAC address manually by typing it in the boxes provided. Otherwise, connect only the PC with the registered MAC address to the wireless AP/Router, then click the "MAC Clone." (Default: Original MAC)

**Note:** If you are unsure of the PC MAC address originally registered by your ISP, call your ISP and request to register a new MAC address for your account. Register the default MAC address of the wireless AP/Router.

- **Original MAC** – Specifies a preset MAC address to uniquely identify the unit.
- **Manual Setting** – Configures a specific MAC address to use for the WAN connection.
- **Ping from WAN** – Sends a ping from the wireless AP/Router to the WAN connection to test for connectivity.
- **Set DNS Server** – Allows manual or automatic selection of DNS servers.
- **Primary DNS Server:** The IP address of the Primary Domain Name Server on the network. A DNS maps numerical IP addresses to domain names and can be used

to identify network hosts by familiar names instead of the IP addresses. If you have one or more DNS servers located on the local network, type the IP addresses in the text fields provided. Otherwise, leave the addresses as all zeros (0.0.0.0).

- **Secondary DNS Server:** The IP address of the Secondary Domain Name Server on the network.

## DHCP

DHCP (Dynamic Host Control Protocol) is set as default for the primary WAN connection. To enable DHCP for the Backup WAN you must select 3G as the primary WAN connection.

WAN Settings	
WAN Connection	<input type="radio"/> Static IP <input checked="" type="radio"/> DHCP <input type="radio"/> PPPoE <input type="radio"/> 3G <input type="radio"/> PPTP <input type="radio"/> L2TP <input type="radio"/> Bigpond <input type="radio"/> WiFi
Dual WAN	
Backup WAN	<input checked="" type="radio"/> None <input type="radio"/> Static IP <input type="radio"/> DHCP <input type="radio"/> PPPoE <input type="radio"/> 3G <input type="radio"/> PPTP <input type="radio"/> L2TP <input type="radio"/> Bigpond <input type="radio"/> WiFi
DHCP	
DHCP MTU	<input type="text" value="1500"/> bytes
DHCP MRU	<input type="text" value="1500"/> bytes
Common Settings	
WAN Ethernet Speed	<input type="text" value="Auto-Negotiated"/> (default:Auto-Negotiated)
WAN Ethernet MAC	<input checked="" type="radio"/> Original MAC (00:12:cf:9b:57:bc) <input type="radio"/> Manual Setting <input type="text" value="00:00:00:00:00:00"/> [MAC Clone]
Ping from WAN	<input type="checkbox"/> Allowed
Set DNS Server	<input type="radio"/> Manually <input checked="" type="radio"/> Automatically

**Figure 5-5 WAN Settings for DHCP (Router mode)**

**DHCP** — Enables DHCP for the WAN port.

- **DHCP MTU:** Sets the maximum packet size that the WAN port may transmit. The Maximum Transmission Unit (MTU) is expressed in bytes. (Default:1500 bytes)
- **DHCP MRU:** Sets the maximum packet size that the unit may receive from other units on the network and sends a message to inform them of the set threshold. Maximum Receive Unit (MRU) is expressed in bytes. (Default: 1500 bytes)

## Static IP

Configures the unit to use the same IP address each time it connects.

WAN Settings	
WAN Connection	<input checked="" type="radio"/> Static IP <input type="radio"/> DHCP <input type="radio"/> PPPoE <input type="radio"/> 3G <input type="radio"/> PPTP <input type="radio"/> L2TP <input type="radio"/> Bigpond <input type="radio"/> WiFi
Dual WAN	
Backup WAN	<input checked="" type="radio"/> None <input type="radio"/> Static IP <input type="radio"/> DHCP <input type="radio"/> PPPoE <input type="radio"/> 3G <input type="radio"/> PPTP <input type="radio"/> L2TP <input type="radio"/> Bigpond <input type="radio"/> WiFi
Static IP	
Static IP MTU	<input type="text" value="1500"/> bytes
Static IP MRU	<input type="text" value="1500"/> bytes
IP Address	<input type="text" value="0.0.0.0"/>
Subnet Mask	<input type="text" value="255.255.255.0"/>
Default Gateway	<input type="text" value="0.0.0.0"/>
Common Settings	
WAN Ethernet Speed	<input type="text" value="Auto-Negotiated"/> (default:Auto-Negotiated)
WAN Ethernet MAC	<input checked="" type="radio"/> Original MAC (00:12:cf:9b:57:bc) <input type="radio"/> Manual Setting <input type="text" value="00:01:80:36:94:21"/> [MAC Clone]
Ping from WAN	<input type="checkbox"/> Allowed
Primary DNS Server	<input type="text" value="168.95.1.1"/>
Secondary DNS Server	<input type="text" value="168.95.192.1"/>

**Figure 5-6 WAN Settings for Static IP (Router mode)**

**Static IP** — Configures a static IP for the WAN port.

- **Static IP MTU:** Sets the maximum packet size that the WAN port may transmit. The Maximum Transmission Unit (MTU) is expressed in bytes. (Default:1500 bytes)
- **Static IP MRU:** Sets the maximum packet size that the unit may receive from other units on the network and sends a message to inform them of the set threshold. Maximum Receive Unit (MRU) is expressed in bytes. (Default: 1500 bytes)
- **IP Address:** Sets the static IP address as given by the PPTP service provider. (Default: 0.0.0.0, available when PPTP Network Mode is set to static IP.)
- **Subnet Mask:** Sets the static IP subnet mask. (Default: 255.255.255.0, available when PPTP Network Mode is set to static IP.)
- **Default Gateway:** The IP address of the gateway router for the wireless AP/ Router, which is used if the requested destination address is not on the local subnet.

- **WAN IP Alias** – Adds more than one IP address to the network interface for multiple connectivity.
  - **Enable:** Enables the specified IP address.
  - **Add:** Specifies a WAN IP alias.
  - **Change:** Changes the already specified IP alias.
  - **Delete:** Deletes the IP alias.

## PPPoE

Enable the wireless AP/Router IP address to be assigned automatically from an Internet service provider (ISP) through an ADSL modem using Point-to-Point Protocol over Ethernet (PPPoE).

WAN Settings	
WAN Connection	<input type="radio"/> Static IP <input type="radio"/> DHCP <input checked="" type="radio"/> PPPoE <input type="radio"/> 3G <input type="radio"/> PPTP <input type="radio"/> L2TP <input type="radio"/> Bigpond <input type="radio"/> WiFi
<b>Dual WAN</b>	
Backup WAN	<input checked="" type="radio"/> None <input type="radio"/> Static IP <input type="radio"/> DHCP <input type="radio"/> PPPoE <input type="radio"/> 3G <input type="radio"/> PPTP <input type="radio"/> L2TP <input type="radio"/> Bigpond <input type="radio"/> WiFi
<b>PPPoE</b>	
PPPoE MTU	<input type="text" value="1492"/> bytes
PPPoE MRU	<input type="text" value="1492"/> bytes
PPPoE Network Mode	<input type="radio"/> Static IP <input checked="" type="radio"/> DHCP
PPPoE Service Name	<input type="text"/> (Optional)
PPPoE Username	<input type="text" value="PPPOE_USERNAME"/>
PPPoE Password	<input type="password" value="••••••••••"/>
Connect Type	<input type="text" value="Keep Alive"/> ▼
PPPoE Max Idle Time	<input type="text" value="600"/> seconds. (default:600)
<b>Common Settings</b>	
WAN Ethernet Speed	<input type="text" value="Auto-Negotiated"/> ▼ (default:Auto-Negotiated)
WAN Ethernet MAC	<input checked="" type="radio"/> Original MAC (00:12:cf:9b:57:bc) <input type="radio"/> Manual Setting <input type="text" value="00:01:80:36:94:21"/> [MAC Clone]
Ping from WAN	<input type="checkbox"/> Allowed
Set DNS Server	<input type="radio"/> Manually <input checked="" type="radio"/> Automatically

Figure 5-7 WAN Settings for PPPoE (Router mode)

**PPPoE** — Configures PPPoE.

- **PPPoE MTU:** Sets the maximum packet size that the WAN port may transmit. The Maximum Transmission Unit (MTU) is expressed in bytes. (Default:1492 bytes)

- **PPPoE MRU:** Sets the maximum packet size that the unit may receive from other units on the network and sends a message to inform them of the set threshold. Maximum Receive Unit (MRU) is expressed in bytes. (Default: 1492 bytes)

**Note:** Only change the default MTU and MRU values if specifically instructed by the PPPoE service provider.

- **PPPoE Network Mode:** Sets the PPPoE network mode to Static IP or DHCP. (Default: DHCP)
- **IP Address:** Sets the static IP address as given by the PPPoE service provider. (Default: 0.0.0.0, available when PPPoE Network Mode is set to static IP.)
- **PPPoE Service Name (Optional):** The service name assigned for the PPPoE connection. The service name is normally optional, but may be required by some service providers. (Range: 1-32 alphanumeric characters)
- **PPPoE User Name:** Sets the PPPoE username for the WAN port. (Default: PPPOE\_USERNAME; Range: 1~32 characters)
- **PPPoE Password:** Sets a PPPoE password for the WAN port. (Default: PPPOE\_PASSWORD; Range: 1~32 characters)
- **Connect Type:** Selects the connection type as Keep Alive or Auto Connect. (Default: Keep Alive)
- **PPPoE Max Idle Time:** The maximum length of inactive time the unit will stay connected to the DSL service provider before disconnecting. This feature only works when Connect Type is set to "Auto-Connect." (Default: 600 seconds)



## 3G

3G technologies enable cellular network operators to offer users a wider range of more advanced services while achieving greater network capacity through improved spectral efficiency. Services include wide-area wireless voice telephony, video calls, and broadband wireless data, all in a mobile environment.

To use the 3G option, you need to first connect a 3G/3.5G USB modem to the USB port on the back of the unit and have registered an account with a cellular operator.

WAN Settings	
WAN Connection	<input type="radio"/> Static IP <input type="radio"/> DHCP <input type="radio"/> PPPoE <input checked="" type="radio"/> 3G <input type="radio"/> PPTP <input type="radio"/> L2TP <input type="radio"/> Bigpond <input type="radio"/> WiFi
<b>Dual WAN</b>	
Backup WAN	<input checked="" type="radio"/> None <input type="radio"/> Static IP <input type="radio"/> DHCP <input type="radio"/> PPPoE <input type="radio"/> 3G <input type="radio"/> PPTP <input type="radio"/> L2TP <input type="radio"/> Bigpond <input type="radio"/> WiFi
<b>3G</b>	
Start Mode	<input checked="" type="radio"/> Automatically <input type="radio"/> Manually
Pin Code Protect	<input checked="" type="checkbox"/> Enable <input type="text" value=""/> <span style="color: red;">Not dialed yet</span>
Dial Code	<input type="text" value="*99#"/>
APN Service	<input type="text" value="internet"/>
3G Username	<input type="text" value="3G_USERNAME"/>
3G Password	<input type="password" value="••••••••"/>
Connect Type	<input type="text" value="Auto Connect"/> ▼
3G Max Idle Time	<input type="text" value="300"/> seconds. (default:300)
Budget Control	<input type="checkbox"/> Enable (default:disabled)
<b>Common Settings</b>	
WAN Ethernet Speed	<input type="text" value="Auto-Negotiated"/> ▼ (default:Auto-Negotiated)
WAN Ethernet MAC	<input checked="" type="radio"/> Original MAC (00:12:cf:9b:57:bc) <input type="radio"/> Manual Setting <input type="text" value="00:00:00:00:00:00"/> <span style="color: blue;">[MAC Clone]</span>
Ping from WAN	<input type="checkbox"/> Allowed
Set DNS Server	<input type="radio"/> Manually <input checked="" type="radio"/> Automatically

**Figure 5-8 WAN Settings for 3G (Router mode)**

**3G** — Enables a 3G/3.5G wide-area wireless cellular link on the USB port using an optional USB modem.

- **Start Mode:** Select the 3G start mode.
  - Automatically: If 3G is selected as primary WAN, when you connect to the 3G modem, enter the PIN code, then the wireless router will connect to 3G Internet service automatically.

- Manually: If the 3G start mode is set to “Manually”, then you can only connect to the 3G Internet service by pressing the 3G button on the wireless AP/Router or by using the web interface.

WAN		
Ethernet Speed		N/A
Ethernet MAC Address		00:12:CF:9B:57:BC
WAN Backup Status		None
Internet Connection Type		3G
Connect Status		3G Disconnected
IP Address		N/A
Subnet Mask		N/A
MTU		N/A
Gateway Address		N/A
DNS 1 (Primary)		N/A
DNS 2 (Secondary)		N/A
3G modem identification		N/A
Signal Strength		N/A
Remaining Budget Bytes		0MBytes
Remaining Budget Time		0Minutes

manual mode only

**Figure 5-9 Manually Start 3G**

- **Pin Code Protect:** Enables the use of a PIN code (personal identification number) to encrypt access to the wireless 3G connection. Some service providers do not require PIN code authentication. If a PIN code is not required for your 3G/3.5G modem, disable this function. (Default: Enabled) Specifies a PIN code number that corresponds with that set on your 3G/3.5G USB modem and displays the status of the 3G connection.
  - **Not dialed yet:** Indicates that the 3G is not dialed and PIN is not authenticated yet.
  - **Authenticated successfully:** Indicates that the 3G connection has authenticated successfully.
- **Dial Code:** A dialled access code that connects the USB device to the service provider.
- **APN Service:** The name that uniquely identifies the cellular operator, access point name (APN).
- **3G Username:** The username of the account registered with the service provider.
- **3G Password:** The password of the account registered with the service provider.
- **Connect Type:** Selects the connection type as Keep Alive or Auto Connect. (Default: Keep Alive)
- **3G Max Idle Time:** The maximum length of inactive time the unit will stay connected to the DSL service provider before disconnecting. This feature only works when Connect Type is set to "Auto-Connect." (Default: 300 seconds)

- **Budget Control:** You can set a monthly limit on time or the total data.
- **Budget Criterion:**
  - **By Time:** Specify the amount of time (in hours) that can be used per month.
  - **By Data:** Specify how much Download/Upload data (in MBytes) can be transmitted per month.
- **Budget Policy:** Enable or disable the action “Drop Current Cellular connection” or “Disallow New Cellular connection” if over budget.
  - **Trigger by Limit Budget:**
    - **By Time:** Set the specified percentage of time limit.
    - **By Data:** Set the specified percentage of data limit.
  - **Action if Over Budget:** Send an e-mail alert at the specified interval in minutes. The wireless AP/Router can use SMTP (Simple Mail Transfer Protocol) to send email messages when triggered by the specified budget policy limits.
    - **SMTP Authentication:** Specifies the user name and password for authentication or login to the SMTP server. (Options: Plain, Login, or disabled.)
    - **Mail Server:** URL of the SMTP mail server that will send the alert messages.
    - **Mail Sender:** Specifies an e-mail address on the SMTP server that can send alert messages.
    - **Mail Recipient:** The e-mail address of the recipient of the alert messages.
- **Budget Counter:** Select the date on which the AP/Router resets the budget every month.

## PPTP

Enable the Point-to-Point Tunneling Protocol (PPTP) for implementing virtual private networks. The service is provided in many European countries.

WAN Settings	
WAN Connection	<input type="radio"/> Static IP <input type="radio"/> DHCP <input type="radio"/> PPPoE <input type="radio"/> 3G <input checked="" type="radio"/> PPTP <input type="radio"/> L2TP <input type="radio"/> Bigpond <input type="radio"/> WiFi
Dual WAN	
Backup WAN	<input checked="" type="radio"/> None <input type="radio"/> Static IP <input type="radio"/> DHCP <input type="radio"/> PPPoE <input type="radio"/> 3G <input type="radio"/> PPTP <input type="radio"/> L2TP <input type="radio"/> Bigpond <input type="radio"/> WiFi
PPTP	
PPTP MTU	<input type="text" value="1460"/> bytes
PPTP MRU	<input type="text" value="1460"/> bytes
PPTP Network Mode	<input type="radio"/> Static IP <input checked="" type="radio"/> DHCP
PPTP Username	<input type="text" value="PPTP_USERNAME"/>
PPTP Password	<input type="password" value="••••••••"/>
PPTP Max Idle Time	<input type="text" value="0"/> seconds. (default:0; forever)
PPTP Retry Time	<input type="text" value="0"/> seconds. (default:0; disabled)
PPTP Server	<input type="text" value="0.0.0.0"/>
Common Settings	
WAN Ethernet Speed	<input type="text" value="Auto-Negotiated"/> (default:Auto-Negotiated)
WAN Ethernet MAC	<input checked="" type="radio"/> Original MAC (00:12:cf:9b:57:bc) <input type="radio"/> Manual Setting <input type="text" value="00:00:00:00:00:00"/> [MAC Clone]
Ping from WAN	<input type="checkbox"/> Allowed
Set DNS Server	<input type="radio"/> Manually <input checked="" type="radio"/> Automatically

**Figure 5-10 WAN Settings for PPTP (Router mode)**

**PPTP** — Enable the Point-to-Point Tunneling Protocol (PPTP) for implementing virtual private networks.

- **PPTP MTU:** Sets the maximum packet size that the WAN port may transmit. The Maximum Transmission Unit (MTU) is expressed in bytes. (Default:1460 bytes)
- **PPTP MRU:** Sets the maximum packet size that the unit may receive from other units on the network and sends a message to inform them of the set threshold. Maximum Receive Unit (MRU) is expressed in bytes. (Default: 1460 bytes)

**Note:** Only change the default MTU and MRU values if specifically instructed by the PPTP service provider.

- **PPTP Network Mode:** Sets the PPTP network mode to Static IP or DHCP. (Default: DHCP)

- **PPTP Username:** Sets the PPTP user name for the WAN port. (Default: PPTP\_USERNAME; Range: 1~32 characters)
- **PPTP Password:** Sets a PPTP password for the WAN port. (Default: PPTP\_PASSWORD; Range: 1~32 characters)
- **PPTP Server:** Configures the IP address of the PPTP server interface. (Default: 0.0.0.0)

## L2TP

Enable the Layer Two Tunneling Protocol (L2TP) for implementing virtual private networks. The service is provided in many European countries.

WAN Settings	
WAN Connection	<input type="radio"/> Static IP <input type="radio"/> DHCP <input type="radio"/> PPPoE <input type="radio"/> 3G <input type="radio"/> PPTP <input checked="" type="radio"/> L2TP <input type="radio"/> Bigpond <input type="radio"/> WiFi
<b>Dual WAN</b>	
Backup WAN	<input checked="" type="radio"/> None <input type="radio"/> Static IP <input type="radio"/> DHCP <input type="radio"/> PPPoE <input type="radio"/> 3G <input type="radio"/> PPTP <input type="radio"/> L2TP <input type="radio"/> Bigpond <input type="radio"/> WiFi
<b>L2TP</b>	
L2TP MTU	<input type="text" value="1410"/> bytes
L2TP MRU	<input type="text" value="1410"/> bytes
L2TP Network Mode	<input type="radio"/> Static IP <input checked="" type="radio"/> DHCP
L2TP Username	<input type="text" value="L2TP_USERNAME"/>
L2TP Password	<input type="password" value="••••••••"/>
L2TP Max Idle Time	<input type="text" value="0"/> seconds. (default:0; forever)
L2TP Retry Time	<input type="text" value="0"/> seconds. (default:0; disabled)
L2TP Server	<input type="text" value="0.0.0.0"/>
<b>Common Settings</b>	
WAN Ethernet Speed	<input type="text" value="Auto-Negotiated"/> (default:Auto-Negotiated)
WAN Ethernet MAC	<input checked="" type="radio"/> Original MAC (00:12:cf:9b:57:bc) <input type="radio"/> Manual Setting <input type="text" value="00:00:00:00:00:00"/> [MAC Clone]
Ping from WAN	<input type="checkbox"/> Allowed
Set DNS Server	<input type="radio"/> Manually <input checked="" type="radio"/> Automatically

Figure 5-11 WAN Settings for L2TP (Router mode)

**L2TP** — Enable the Layer Two Tunneling Protocol (L2TP).

- **L2TP MTU:** Sets the maximum packet size that the WAN port may transmit. The Maximum Transmission Unit (MTU) is expressed in bytes. (Default:1410 bytes)
- **L2TP MRU:** Sets the maximum packet size that the unit may receive from other units on the network and sends a message to inform them of the set threshold. Maximum Receive Unit (MRU) is expressed in bytes. (Default: 1410 bytes)

- Only change the default MTU and MRU values if specifically instructed by the PPTP service provider.
- **L2TP Network Mode:** Sets the L2TP IP address assignment to Static IP or DHCP. (Default: DHCP)
- **IP Address:** Sets the static IP address as given by the L2TP service provider. (Default: 0.0.0.0, available when L2TP Network Mode is set to static IP.)
- **Subnet Mask:** Sets the static IP subnet mask. (Default: 255.255.255.0, available when L2TP Network Mode is set to static IP.)
- **Default Gateway:** The IP address of the gateway router for the wireless AP/ Router, which is used if the requested destination address is not on the local subnet.
- **L2TP Username:** Sets the L2TP user name for the WAN port. (Default: L2TP\_USERNAME; Range: 1~32 characters)
- **L2TP Password:** Sets a L2TP password for the WAN port. (Default: L2TP\_PASSWORD; Range: 1~32 characters)
- **L2TP Max Idle Time:** The maximum length of inactive time the unit will stay connected to the DSL service provider before disconnecting. (Default: 15 seconds; Range: 5 ~ 600 seconds)
- **L2TP Retry Time After Disconnect:** Sets a L2TP retry time after the network is disconnected. (Default: 0 seconds; disabled)
- **L2TP Server:** Configures the IP address of the L2TP server interface. (Default: 0.0.0.0)

## Bigpond

BigPond is an Australian Internet service provider, is a subsidiary of Telstra and owns a majority share of Internet access in Australia.

WAN Settings	
WAN Connection	<input type="radio"/> Static IP <input type="radio"/> DHCP <input type="radio"/> PPPoE <input type="radio"/> 3G <input type="radio"/> PPTP <input type="radio"/> L2TP <input checked="" type="radio"/> Bigpond <input type="radio"/> WiFi
Dual WAN	
Backup WAN	<input checked="" type="radio"/> None <input type="radio"/> Static IP <input type="radio"/> DHCP <input type="radio"/> PPPoE <input type="radio"/> 3G <input type="radio"/> PPTP <input type="radio"/> L2TP <input type="radio"/> Bigpond <input type="radio"/> WiFi
Bigpond	
Bigpond Username	<input type="text" value="BIGPOND_USERNAME"/>
Bigpond Password	<input type="password" value="••••••••••"/>
Bigpond Authentication Server	<input type="text" value="sm-server"/>
Common Settings	
WAN Ethernet Speed	<input type="text" value="Auto-Negotiated"/> (default:Auto-Negotiated)
WAN Ethernet MAC	<input checked="" type="radio"/> Original MAC (00:12:cf:9b:57:bc) <input type="radio"/> Manual Setting <input type="text" value="00:00:00:00:00:00"/> <input type="button" value="[MAC Clone]"/>
Ping from WAN	<input type="checkbox"/> Allowed
Set DNS Server	<input type="radio"/> Manually <input checked="" type="radio"/> Automatically

**Figure 5-12 WAN Settings for Bigpond (Router mode)**

**Bigpond** — Enables the settings of Telstra Bigpond network service in Australia.

- **Bigpond Username:** Sets the Bigpond user name for the WAN port. (Default: BIGPOND\_USERNAME; Range: 1~32 characters)
- **Bigpond Password:** Sets a Bigpond password for the WAN port. (Default: BIGPOND\_USERNAME; Range: 1~32 characters)
- **Bigpond Authentication Server:** Specifies a Bigpond authentication server. (Default: sm-server)

## Wi-Fi

Enables a WAN connection to a normal remote AP over a wireless 802.11b/g/n connection. For this WAN setting, the wireless AP/Router operates as a Wi-Fi client to the remote AP.

WAN Settings	
WAN Connection	<input type="radio"/> Static IP <input type="radio"/> DHCP <input type="radio"/> PPPoE <input type="radio"/> 3G <input type="radio"/> PPTP <input type="radio"/> L2TP <input type="radio"/> Bigpond <input checked="" type="radio"/> WiFi
Dual WAN	
Backup WAN	<input checked="" type="radio"/> None <input type="radio"/> Static IP <input type="radio"/> DHCP <input type="radio"/> PPPoE <input type="radio"/> 3G <input type="radio"/> PPTP <input type="radio"/> L2TP <input type="radio"/> Bigpond <input type="radio"/> WiFi
Common Settings	
WAN Ethernet Speed	<input type="text" value="Auto-Negotiated"/> (default:Auto-Negotiated)
WAN Ethernet MAC	<input checked="" type="radio"/> Original MAC (00:12:cf:9b:57:bc) <input type="radio"/> Manual Setting <input type="text" value="00:00:00:00:00:00"/> [MAC Clone]
Ping from WAN	<input type="checkbox"/> Allowed
Set DNS Server	<input type="radio"/> Manually <input checked="" type="radio"/> Automatically

**Figure 5-13 WAN Settings for Wi-Fi (Router mode)**

**Wireless Client** — Enables the WLAN1 VAP to act as a wireless connection to the WAN.

- **Wireless MTU:** Sets the maximum transmission units in bytes. (Default: 1460 bytes)
- **Wireless MRU:** Sets the maximum receive units in bytes. (Default: 1460 bytes)
- **Wireless Network Mode:** Sets the wireless network mode. (Default: DHCP)
  - **Static IP:** Select this option for a static manually configured IP address.
  - **DHCP:** Select this option to enable the client to obtain its IP address from a DHCP server.

**Note:** For detailed AP Client Settings information, see "AP Client Settings".



## LAN Settings

The wireless AP/Router must have a valid IP address for management using a web browser and to support other features. The unit has a default IP address of 192.168.2.1. You can use this IP address or assign another address that is compatible with your existing local network. Click on "Network Settings" followed by "LAN."

LAN Settings	
LAN IP Address	<input type="text" value="192.168.2.1"/>
Subnet Mask	<input type="text" value="255.255.255.0"/> ▼
DNS Proxy	<input checked="" type="checkbox"/> Enable (default: enabled)

**Figure 5-14 LAN Settings (Router mode)**

- **LAN IP Address** – Valid IP addresses consist of four decimal numbers, 0 to 255, separated by periods. The default setting is 192.168.2.1.
- **Subnet Mask** – Indicate the local subnet mask. (Default: 255.255.255.0.)
- **DNS Proxy** – Enables DNS proxy on the LAN port. (Default: Enabled)

## QoS Settings

The QoS setting page is used to configure Quality of Service (QoS) for Traffic Prioritization and Bandwidth Management. Quality of Service (QoS) provides users the control over which type of outgoing data traffic is given priority by the router. The throughput rate of both the upload and download data passed through the wireless AP/Router can be throttled.

**Bandwidth QoS Settings**

QoS Bandwidth	<input checked="" type="checkbox"/> Enable	<b>Bandwidth Setting:</b> Bandwidth management and traffic control for QoS support.
WAN Upload Bandwidth	<input type="text" value="102400"/> (kbps)	
LAN Download Bandwidth	<input type="text" value="102400"/> (kbps)	

---

**Traffic Control QoS**

Enable Rule	<input type="checkbox"/>	<b>Traffic Control:</b> Setup bandwidth rules with ip address and port.
Interface	<input type="text" value="WAN (Upload)"/>	
Source IP	<input type="text"/>	
Source Port	<input type="text"/>	
Destination IP	<input type="text"/>	
Destination Port	<input type="text"/>	
Protocol	<input type="text" value="TCP"/>	
DSCP(0..63)	<input type="text"/>	
Priority	<input type="text" value="Low"/>	
Min Bandwidth(kbps)	<input type="text"/>	
Max Bandwidth(kbps)	<input type="text"/>	
Comment	<input type="text"/>	

---

**Traffic Control QoS List**

Enable	Interface	Source IP	Source Port	Destination IP	Destination Port	Protocol	DSCP (0..63)	Priority	Min Bandwidth (kbps)	Max Bandwidth (kbps)	Comment	Action

**Figure 5-15 QoS Settings (Router mode)**

**Bandwidth QoS Setting** — The maximum upload and download speeds of the Internet connection on the WAN port. It is recommended that you set these values at between 85-90% of your true speeds. Most broadband services are rated in Megabits per second (Mbps). To convert Mbps to Kilobits per second (Kbps), multiply the value by 1024. The following table lists the most common broadband service speeds:

Mbps	Kilobits
1	1024
2	2048
3	3072
4	4069
6	6144
8	8192
12	12288

- **QoS Bandwidth** – Enables the QoS bandwidth management and traffic control.

- **WAN Upload Bandwidth** – Sets the maximum WAN upload bandwidth. (Default: 102400 kbps)
- **LAN Download Bandwidth** – Sets the maximum LAN download bandwidth. (Default: 102400 kbps)

**Traffic Control QoS** — The feature is applied when the applications use static ports to provide services. The wireless AP/Router can map traffic using specific TCP/UDP ports to one of the QoS priorities; low, medium, high, and highest. (Maximum 32 entries are allowed.)

- **Enable** – Activates an application port-based QoS entry. (Default: Disabled)
- **Interface** – Specifies the LAN ports (download) or WAN port (upload).
- **Source IP** – The source IP address.
- **Source Port** – Specifies source TCP/UDP port numbers used by an application. Multiple ports can be specified, for example, you can enter "1000-2000" for a continuous port range. Also, specific ports or port ranges can be entered together in one expression, for example "1000,2000-2100,3000." Up to eight elements can be supported in each expression. (Range: 1-65535)
- **Destination IP** – The destination IP address.
- **Destination Port** – Specifies destination TCP/UDP port numbers used by an application. Multiple ports can be specified, for example, you can enter "1000-2000" for a continuous port range. Also, specific ports or port ranges can be entered together in one expression, for example "1000,2000-2100,3000." Up to eight elements can be supported in each expression. (Range: 1-65535)
- **Protocol** – Specifies TCP or UDP.
- **DSCP** – Differentiated Services Code Point (DSCP) specifies a field in the header of IP packets for packet classification purposes.
- **Priority** – Selects Low, Medium, High or Highest as the QoS priority specified for an application.
- **Minimum Bandwidth** – Specifies the smallest bandwidth allowed.
- **Maximum Bandwidth** – Specifies the largest bandwidth allowed.
- **Comment** – An optional field to make notation.
- **Action** – Specifies an action to take on the QoS table entry.
  - **Change**: By selecting an entry from the table, its parameters display in an editable form. Click "Change" to save parameters once you have updated them.
  - **Add**: Adds a newly configured QoS entry to the table.
  - **Edit**: Click "Edit" to highlight a configured QoS entry to modify its parameters.
  - **Delete**: Deletes QoS entry from the table.

## Wireless Settings

The IEEE 802.11n interfaces include configuration options for radio signal characteristics and wireless security features.

The wireless AP/Router can operate in five modes, mixed 802.11b/g/n, mixed 802.11b/g, 802.11b only, 802.11g only or 802.11n only. Also note that 802.11g is backward compatible with 802.11b, and 802.11n is backward compatible with both 802.11b/g at slower data transmit rates.

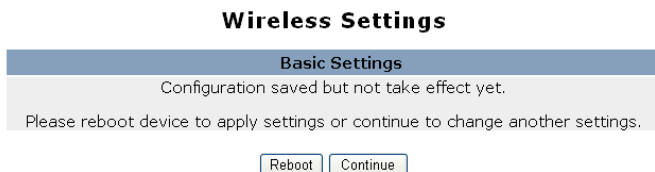
Each radio supports two virtual access point (VAP) interfaces, referred to as WLAN1 and WLAN2. Each VAP functions as a separate access point, and can be configured with its own Service Set Identification (SSID) and security settings. However, most radio signal parameters apply to both VAP interfaces. The configuration options are nearly identical, and are therefore both covered in this section of the manual.

Traffic to specific VAPs can be segregated based on user groups or application traffic. Both VAPs can have up to 64 wireless clients, whereby the clients associate with these VAPs the same as they would with a physical access point.

**Note:** The radio channel settings for the access point are limited by local regulations, which determine the number of channels that are available. See “Specifications” on page B-1” for additional information on the maximum number channels available.

The hardware switch feature to toggle between Router and AP Mode, located on the base of the wireless AP/Router, affects some of the Wireless Interface parameters. However, most radio signal parameters apply in both modes so will be described together in the following sections.

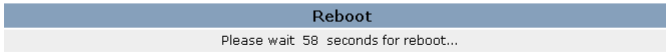
Changing settings in the Wireless Settings configuration and clicking “submit” prompts you to either “Reboot” for your changes to immediately take effect, or “Continue” to continue making configuration changes without them taking effect until you next reboot.



**Figure 5-16 Changing Settings**

Choosing to reboot after making configuration changes triggers a countdown window that requires 60 seconds to complete.

### Management



**Figure 5-17 Implementing Changed Settings**

## Basic Settings

The Basic Setting page allows you to enable the wireless interface, select which radio mode to use, choose the transmit frequency and configure SSIDs.

Click on "Wireless Settings," followed by "Basic Settings."

**Note:** There are several variables to consider when selecting a radio mode that make it fully functional. Simply selecting the mode you want is not enough to ensure full compatibility for that mode. Information on these variables may be found in the Advanced Setting section.

Basic Settings	
WLAN	<input checked="" type="checkbox"/> Enable
WLAN Mode	802.11b/g/n Mixed ▾
WLAN Frequency	2.412GHz (channel 1) ▾
SSID Number Supported	1 ▾
WLAN1 SSID	SMC

**Figure 5-18 Basic Radio Settings**

- **WLAN** – Enables the communication for the VAP wireless interface.  
(Default: Enabled)
- **WLAN Mode** – Defines the radio mode for the VAP interface.  
(Default: 802.11b/g/n Mixed)

**Note:** Enabling the wireless AP/Router to communicate with 802.11b/g clients in both 802.11b/g/n Mixed and 802.11n modes also requires that HT Operation in the Advanced Settings menu be set to Mixed. Setting HT Operation to Green Field is exclusive for 802.11n client communication only and prevents 802.11 b/g communication.

- **802.11b/g/n Mixed:** All 802.11b/g/n clients can communicate with the wireless AP/ Router (up to 300 Mbps), but data transmission rates may be slowed to compensate for 802.11b/g clients.

WLAN Mode	802.11b/g/n Mixed ▾
WLAN Frequency	802.11b/g/n Mixed
SSID Number Supported	802.11b/g Mixed
WLAN1 SSID	802.11b
	802.11g
	802.11n

- **802.11b/g Mixed:** Both 802.11b and 802.11g clients can communicate with the wireless AP/Router (up to 108 Mbps), but data transmission rates may be slowed to compensate for 802.11b clients. Any 802.11n clients will also be able to communicate with the wireless AP/Router, but they will be limited to 802.11g protocols and data transmission rates.
  - **802.11b:** All 802.11b, 802.11g, and 802.11n clients will be able to communicate with the wireless AP/Router, but the 802.11g and 802.11n clients will be limited to 802.11b protocols and data transmission rates (up to 11 Mbps).
  - **802.11g:** Both 802.11g and 802.11n clients will be able to communicate with the wireless AP/Router, but the 802.11n clients will be limited to 802.11g protocols and data transmission rates (up to 54 Mbps). Any 802.11b clients will not be able to communicate with the wireless AP/Router.
  - **802.11n:** Only 802.11n clients can communicate with the wireless AP/Router (up to 300 Mbps). Any 802.11b or 802.11g clients will not be able to communicate with the wireless AP/Router.
- **WLAN Frequency** – The radio channel that the wireless AP/Router uses to communicate with wireless clients. When multiple access points are deployed in the same area, set the channel on neighboring access points at least five channels apart to avoid interference with each other. For example, you can deploy up to three access points in the same area using channels 1, 6, 11. Note that wireless clients automatically set the channel to the same as that used by the wireless AP/Router to which it is linked. Selecting Auto Select enables the wireless AP/Router to automatically select an unoccupied radio channel. (The supported channels are dependent on the country code setting.)
 

WLAN Frequency	2.412GHz (channel 1) ▾
SSID Number Supported	Auto Select
WLAN1 SSID	2.412GHz (channel 1)
	2.417GHz (channel 2)
	2.422GHz (channel 3)
	2.427GHz (channel 4)
	2.432GHz (channel 5)
	2.437GHz (channel 6)
	2.442GHz (channel 7)
	2.447GHz (channel 8)
	2.452GHz (channel 9)
	2.457GHz (channel 10)
	2.462GHz (channel 11)
  - **SSID Number Supported** – The number of wireless network interfaces (SSIDs) supported on the device. (Default: 1; Range: 1 or 2)
  - **WLAN1 SSID / WLAN2 SSID** – The name of the wireless network service provided by the VAP. Clients that want to connect to the network must set their SSID to the same as that of the VAP interface. (Default: “SMC” for WLAN1; “SMC1” for WLAN2; Range: 1-32 characters)
  - **Submit** – Saves and enables the Basic Wireless Setting configuration.
  - **Reset** – Restores the previous Basic Wireless Setting configuration information.

## Advanced Settings

The Advanced Setting page allows you to configure the more advanced radio settings, many of which are enabled by default.

Click “Wireless Settings” followed by “Advanced Settings.”

Advanced Settings	
Tx Power	100% (default: 100%)
b/g Protection	Auto
Tx Burst	<input checked="" type="checkbox"/> Enable (default: enabled)
Packet Aggregation	<input type="checkbox"/> Enable (default: disabled)
HT Operation Mode	Mixed (default: Mixed)
HT Channel Bandwidth	20/40Mhz (default: 20/40Mhz)
HT TX Aggregate MSDU	<input type="checkbox"/> Enable (default: disabled)

WLAN1	
Hide SSID	<input type="checkbox"/> Enable (default: disabled)
WMM Support	<input type="checkbox"/> Enable (default: disabled)

Figure 5-19 Advanced Radio Settings

- **b/g Protection** – Enables a backward compatible protection system for 802.11b clients. There are three modes. (Default: Auto):

b/g Protection	Auto
HT Operation Mode	Auto
HT Channel Bandwidth	Always On
HT TX Aggregate MSDU	Always Off

- **Auto:** The wireless AP/Router enables its protection mechanism for 802.11b clients when they are detected in the network. When 802.11b clients are not detected, the protection mechanism is disabled.
- **Always On:** Forces the unit to always use protection for 802.11b clients, whether they are detected in the network or not.
- **Always Off:** Forces the unit to never use protection for 802.11b clients. This prevents 802.11b clients from connecting to the network.

**Note:** Enabling “Always On” b/g Protection can slow throughput for 802.11g/n clients by as much as 50%.

- **HT Operation Mode** – Packets from 802.11n clients are referred to as High Throughput (HT) Greenfield packets, in other words packets that can be transmitted at rates of up to 300 Mbps assuming that HT Channel Bandwidth is set to 20/40Mhz, see HT Channel Bandwidth next page.

HT Operation Mode	Mixed
HT Channel Bandwidth	Mixed
HT Guard Interval	Green Field

**Note:** Some 802.11n wireless clients may be capable of transmission rates of up to 600 Mbps, however the wireless AP/Router will only be able to connect to them at a maximum transmission rate of 300 Mbps.

802.11b/g packets are referred to as non-HT packets, being transmitted at lower throughput rates. HT mixed format frames contain a preamble compatible with the non-HT receivers.

HT Greenfield frames do not contain a non-HT compatible part. Support for HT Greenfield format is optional. An HT station that does not support the reception of an HT Greenfield format frame must be able to detect that an HT Greenfield format frame is an HT transmission (as opposed to a non-HT transmission). In this case the receiver must decode the high throughput signal (HT-SIG) in the packet header and determine if the HT-SIG cyclic redundancy check (CRC) passes. (Default: Mixed)

- **HT Channel Bandwidth** – The wireless AP/ Router provides a channel bandwidth of 40 MHz by default giving an 802.11g connection speed of 108 Mbps (sometimes referred to as Turbo Mode) and a 802.11n connection speed of up to 300 Mbps. Setting the HT Channel Bandwidth to 20 MHz slows connection speed for 802.11g and 802.11n to 54 Mbps and 74 Mbps respectively and ensures backward compliance for slower 802.11b devices. (Default: 20/40Mhz)

HT Operation Mode	Mixed
HT Channel Bandwidth	20/40Mhz
HT Guard Interval	20Mhz
HT TX Aggregate MSDU	20/40Mhz

- **HT TX Aggregate MSDU** – This option enables Mac Service Data Unit (MSDU) aggregation. (Default: Enabled)

**WLAN1~WLAN2** — Stipulates settings specific to each VAP interface.

- **Hide SSID** – Hiding the SSID of the VAP increases security of the network but does not allow clients to detect your presence on the network and requires that clients already know your SSID. (Default: Disabled)
- **WMM Support** – Wi-Fi Multimedia (WMM), also known as Wireless Multimedia Extensions (WME), is a Wi-Fi Alliance interoperability certification. It provides basic Quality of Service (QoS) features for IEEE 802.11 wireless network. Enabling WMM support provides prioritization of Wi-Fi data packets on four categories voice, video, best effort, and background. (Default: Enabled)
- **Save** – Saves and enables the Advanced Wireless Setting configuration.
- **Cancel** – Restores the previous Advanced Wireless Setting configuration information.



## WLAN Security

The wireless AP/Router's wireless interface is configured by default as an "open system," which broadcasts a beacon signal including the configured SSID. Wireless clients with a configured SSID of "ANY" can read the SSID from the beacon, and automatically set their SSID to allow immediate connection to the wireless network.

To improve wireless network security, you have to implement two main functions:

- Authentication – It must be verified that clients attempting to connect to the network are authorized users.
- Traffic Encryption – Data passing between the unit and clients must be protected from interception and eavesdropping.

For a more secure network, the wireless AP/Router can implement one or a combination of the following security mechanisms:

- Wired Equivalent Privacy (WEP)
- IEEE 802.1X
- Wi-Fi Protected Access (WPA) or WPA2

The security mechanisms that may be employed depend on the level of security required, the network and management resources available, and the software support provided on wireless clients.

### WLAN1 and WLAN2 Security

The wireless AP/Router supports two virtual access point (VAP) interfaces referred to as WLAN1 and WLAN2. Each VAP functions as a separate access point, and can be configured with its own security settings.

**Note:** WDS settings may only be configured for WLAN1, See "WDS Settings" on page 5-33. WLAN2 only operates as an access point service.

**Note:** Configuring WLAN1 to operate in WDS "Bridge" mode automatically disables WLAN2.

Click "Wireless Settings" followed by either "WLAN1 Security" or "WLAN2 Security."

WLAN1 Security Settings	
Authentication Mode	Shared
Encryption Type	WEP
Default Key ID	1
Key1	ASCII (5 or 13 chars)
Key2	ASCII (5 or 13 chars)
Key3	ASCII (5 or 13 chars)
Key4	ASCII (5 or 13 chars)

WDS Setting	
WDS	Disabled (default: disabled)
AP Client Setting	
AP Client Support	<input type="checkbox"/> Enable

Figure 5-20 WLAN1 Settings

WLAN2 Security Settings	
Authentication Mode	WPA2 Enterprise
Encryption Type	TKIP
WPA2 Pre-Authentication Support	<input checked="" type="checkbox"/> Enable

RADIUS Settings	
RADIUS Server Network	WAN
RADIUS Server Address	0.0.0.0
RADIUS Server Port	1812
RADIUS Server Key	

Figure 5-21 WLAN2 Settings

**Security Settings** — The security settings determine the authentication mode and enable WEP keys.

- **Authentication Mode** – Configures the authentication mode used by clients. (WLAN1/WLAN2 Defaults: Open)

Authentication Mode	Open
Encryption Type	Open

- **Open:** Open-system authentication accepts any client attempting to connect the wireless AP/Router without verifying its identity. In this mode the default encryption type is "None."

WLAN1 Security Setting	
Authentication Mode	Open
Encryption Type	None

- **Shared:** The shared-key approach uses Wired Equivalent Privacy (WEP) to verify client identity by distributing a shared key to clients before attempting authentication.

WLAN1 Security Setting	
Authentication Mode	Shared
Encryption Type	WEP
Default Key ID	1
Key1	ASCII (5 or 13 chars)
Key2	ASCII (5 or 13 chars)
Key3	ASCII (5 or 13 chars)
Key4	ASCII (5 or 13 chars)

- **WEP Auto:** Allows WLAN clients to associate using Open-WEP (uses WEP for encryption only) or Shared-WEP (uses WEP for authentication and encryption). If enabled, you must configure at least one key for the VAP interface and all its clients. Wired Equivalent Privacy (WEP) provides a

Authentication Mode	WEP Auto
Encryption Type	WEP
Default Key ID	1
Key1	ASCII (5 or 13 chars)
Key2	ASCII (5 or 13 chars)
Key3	ASCII (5 or 13 chars)
Key4	ASCII (5 or 13 chars)

basic level of security, preventing unauthorized access to the network and encrypting data transmitted between wireless clients and the wireless AP/Router. WEP uses static shared keys (fixed-length hexadecimal or alphanumeric strings) that are manually distributed to all clients that want to use the network.

- **WPA Personal** or **WPA2 Personal:** The WPA or WPA2 Personal mode uses a common password phrase, called a Pre-Shared Key, that must be manually distributed to all clients that want to connect to the network. Specify a key as an easy-to-remember form of letters and numbers. The WPA Preshared Key can be input as ASCII string (8-63 characters) or Hexadecimal format (length is 64). All wireless clients must be configured with the same key to communicate with the VAP interface.

WLAN1 Security Settings	
Authentication Mode	WPA2 Personal
Encryption Type	TKIP
WPA/WPA2 Pre-Shared Key	Pass Phrase (8..63 chars)
WPA Group-Key ReKey Method	Disabled
WPA2 Pairwise Master Key Cache Interval	10 minutes (default: 10)
WPA2 Pre-Authentication Support	<input type="checkbox"/> Enable

- **WPA Enterprise or WPA2 Enterprise:**

The WPA Enterprise mode uses IEEE 802.1X as its basic framework for user authentication and dynamic key management. IEEE 802.1X access security uses Extensible Authentication Protocol (EAP) and requires a configured RADIUS authentication server to be accessible in the enterprise network. If you select WPA or WPA2 Enterprise mode, be sure to configure the RADIUS settings. See “RADIUS” on page 5-32 for more information.

WLAN2 Security Settings	
Authentication Mode	WPA2 Enterprise
Encryption Type	TKIP
WPA2 Pre-Authentication Support	<input type="checkbox"/> Enable

- **WPA/WPA2 Personal:** The WPA/WPA2 Personal Mode allows both WPA and WPA2 clients to join the network. The WPA Preshared Key can be input as ASCII string (8-63 characters) or Hexadecimal format (length is 64). All wireless clients must be configured with the same key to communicate with the VAP interface.

WLAN2 Security Settings	
Authentication Mode	WPA/WPA2 Personal
Encryption Type	TKIP
WPA/WPA2 Pre-Shared Key	Pass Phrase (8-63 chars)
WPA2 Pre-Authentication Support	<input type="checkbox"/> Enable

- **WPA/WPA2 Enterprise:** Defines a transitional mode of operation for networks moving from WPA security to WPA2. WPA/WPA2 Enterprise Mode allows both WPA and WPA2 clients to associate to a common SSID interface. In WPA/WPA2 mixed mode, the unicast encryption cipher (TKIP or AES-CCMP) is negotiated for each client. The access point advertises its supported encryption ciphers in beacon frames and probe responses. WPA and WPA2 clients select the cipher they support and return the choice in the association request to the access point. For mixed-mode operation, the cipher used for broadcast frames is always TKIP. WEP encryption is not allowed.

WLAN2 Security Settings	
Authentication Mode	WPA/WPA2 Enterprise
Encryption Type	TKIP
WPA2 Pre-Authentication Support	<input type="checkbox"/> Enable

• **Encryption Type** – Selects the data encryption type to use. (Default: determined by the Authentication Mode selected)

- **None:** Disables data encryption.

- **WEP:** Selects WEP keys for data encryption.

- **TKIP:** Uses Temporal Key Integrity

Protocol (TKIP) keys for encryption. WPA specifies TKIP as the data encryption method to replace WEP. TKIP avoids the problems of WEP static keys by dynamically changing data encryption keys.

- **AES:** Uses Advanced Encryption Standard (AES) keys for encryption. WPA2 uses AES Counter-Mode encryption with Cipher Block Chaining Message Authentication Code (CBC-MAC) for message integrity. The AES Counter-Mode/CBCMAC Protocol (AES-CCMP) provides extremely robust data confidentiality using a 128-bit key. Use of AES-CCMP encryption is specified as a standard requirement for WPA2. Before implementing WPA2 in the network, be sure client devices are upgraded to WPA2-compliant hardware.

Encryption Type	TKIP
WPA/WPA2 Pre-Shared Key	TKIP
WPA Group-Key ReKey Method	Disabled

- **TKIP/AES:** Uses either TKIP or AES keys for encryption. WPA/WPA2 mixed modes allow both WPA and WPA2 clients to associate to a common SSID interface. In mixed mode, the unicast encryption cipher (TKIP or AES-CCMP) is negotiated for each client.

- **Default Key ID** – Sets the WEP key used for authentication.  
(Default: 1; Range: 1~4)

Default Key ID	1
Key1	2
	3
	4

- **Key 1 ~ Key 4** – Sets WEP key values. The user must first choose between ASCII or Hexadecimal keys. At least one key must be specified. Each WEP key has an index number. The selected key is used for authentication and encryption on the VAP interface. Enter key values that match the key type and length settings. Standard keys are either 5 or 13 alphanumeric characters; or 10 or 26 hexadecimal digits.

(Default: ASCII, no preset value)

Key1	ASCII (5 or 13 chars)
Key2	Hex (10 or 26 hex)
	ASCII (5 or 13 chars)

- **WPA Group-Key ReKey Method** – WPA Rekeying is an extra security measure whereby the broadcast WPA authentication key is automatically changed after a certain time period or after a certain number of packets have been sent. (Default: Disabled)

WPA Group-Key ReKey Method	Disabled
WPA2 Pairwise Master Key Cache Interval	by Time
WPA2 Pre-Authentication Support	by Packet

- **WPA Group-Key ReKey Interval** – The elapsed time after which the wireless AP/Router will change the unicast WPA authentication key. (Default: 0; Range: 0~67108864)

WPA Group-Key ReKey Method	by Time
WPA Group-Key ReKey Interval	0 (0..67108864, default:0)
WPA2 Pairwise Master Key Cache Interval	10 minutes (default:10)

- **WPA2 Pairwise Master Key Cache Interval** – The elapsed time after which the wireless AP/Router will delete the WPA2 master keys from its security association cache.

WPA2 Pairwise Master Key Cache Interval	10
WPA2 Pre-Authentication Support	1
	5
	10
	20
	30
	60
	120

- **WPA2 Pre-Authentication Support** – Each time a client roams to another access point it has to be fully re-authenticated. This authentication process is time consuming and can disrupt applications running over the network. WPA2 includes a mechanism, known as pre-authentication, that allows clients to roam to a new access point and be quickly associated. The first time a client is authenticated to a wireless network it has to be fully authenticated. When the client is about to roam to another access point in the network, the access point sends pre-authentication messages to the new access point that include the client's security association information. Then when the client sends an association request to the new access point, the client is known to be already authenticated, so it proceeds directly to key

exchange and association. Pre-authentication support attaches a security flag to the packet header. (Default: Disabled)

## RADIUS

Remote Authentication Dial-in User Service (RADIUS) is an authentication protocol that uses software running on a central server to control access to RADIUS-aware devices on the network. An authentication server contains a database of user credentials for each user that requires access to the network.

A RADIUS server must be specified for the access point to implement IEEE 802.1X network access control and Wi-Fi Protected Access (WPA) wireless security.

Click "WLAN1/WLAN2 Security" and be sure that an "Enterprise" mode is selected.

**Note:** This guide assumes that you have already configured RADIUS server(s) to support the access point. Configuration of RADIUS server software is beyond the scope of this guide, refer to the documentation provided with the RADIUS server software.

RADIUS Settings	
RADIUS Server Network	WAN ▾
RADIUS Server Address	0.0.0.0
RADIUS Server Port	1812
RADIUS Server Key	

Figure 5-22 RADIUS Settings

**RADIUS Setting** — Configures RADIUS server settings.

**Note:** RADIUS settings only apply to WPA, WPA2, or WPA/WPA2 Enterprise modes.

- RADIUS Server Network** – Use the RADIUS Server Network options to specify if the server is located on the local area network, or wide area network. (Default: WAN)
 

RADIUS Server Network	WAN ▾
RADIUS Server Address	WAN
RADIUS Server Port	LAN
RADIUS Server Key	
- RADIUS Server Address** – Specifies the IP address of the RADIUS server.
- RADIUS Server Port** – The User Datagram Protocol (UDP) port number used by the RADIUS server for authentication messages. (Range: 1024-65535; Default: 1812)
- RADIUS Server Key** – A shared text string used to encrypt messages between the access point and the RADIUS server. Be sure that the same text string is specified on the RADIUS server. Do not use blank spaces in the string. (Maximum length: 20 characters)

## WDS Settings

The WLAN1 radio interface can be configured to operate in a mode that allows it to forward traffic directly to other access point units. To set up links between access point units, you must configure the Wireless Distribution System (WDS) forwarding table by specifying the wireless MAC address of all units to which you want to forward traffic.

Traffic forwarded to WDS links is automatically converted to 802.11 four-address format frame. This uses the MAC addresses of the station and that of the AP connected to it on the transmitting LAN, and the MAC addresses of the AP functioning as a wireless repeater/bridge and that of the station connected to it on a neighboring LAN in the 802.11 frame header. Ethernet traffic follows a three-address format that is reconstructed for WDS transmission. The wireless AP/Router will reconstruct the frame format upon receipt and transmission using the criteria of the receiving and forwarding port location and whether it is Ethernet or wireless in type.

**Note:** The wireless AP/Router does not support the spanning tree algorithm. WDS links should be configured appropriately to avoid causing loops on the network.

Up to four WDS links can be specified for each unit in the WDS network.

The WDS link can be configured in the following combinations:

1. Both two units are configured as Router Mode
2. One unit is Router Mode and one unit is AP Bridge Mode
3. Both two units are configured as AP Bridge Mode

When both units are set to Router Mode, be sure to check these settings:

- Be sure each unit is configured with a different LAN IP address.
- Be sure that only one unit has Internet access on its WAN port.
- Be sure the DHCP server is enabled only on one unit. If one unit is providing Internet access, enable the DHCP server on that unit.

**Note:** WDS Settings only apply to WLAN1. WLAN2 is pre-configured to AP mode unless WLAN1 is configured to act as a bridge, in which case WLAN2 is disabled.

WDS Settings	
WDS	Bridge (default: disabled)
WDS Encryption Type	TKIP
WDS WPA/WPA2 Pre-Shared Key	<input type="text"/>
WDS MAC List	<input type="text"/>
	<input type="text"/>
	<input type="text"/>
	<input type="text"/>

Figure 5-23 WDS Settings

**WDS Setting** — Configures WDS related parameters. Up to four MAC addresses can be specified for each unit in the WDS network. WDS links may either be manually configured (Bridge and Repeater modes) or auto-discovered (Lazy mode).

- **WDS** – Selects the WDS mode of WLAN1. (Default: Disabled)
  - **Disabled:** WDS is disabled.
  - **Bridge:** Operates as a standard bridge that forwards traffic between WDS links (links that connect to other AP/wireless bridges, or units in Repeater or Lazy mode) and an Ethernet port. Only data destined for stations which are known to be on the peer Ethernet link, multicast data or data with unknown destinations, need to be forwarded through the WDS link. The Bridge mode does not transmit a beacon, unlike the other three modes. In this mode the wireless AP/Router may also function as a repeater.

**Note:** Enabling “Bridge” mode disables WLAN2.

- **Repeater** – Operates as a wireless repeater, extending the range for remote wireless clients and connecting them to an AP connected to the wired network. WDS peers must be registered with the wireless AP/Router. Repeater mode also supports the dual capability of the VAP functioning as an AP. In this mode, traffic is not forwarded to the Ethernet port from the radio interface. In Repeater mode the wireless AP/Router transmits a beacon.
- **Lazy** – Operates in an automatic mode that detects and learns WDS peer addresses from received WDS four-address format frame packets, without the need to configure a WDS MAC list entry. This feature allows the wireless AP/Router to associate with other wireless AP/Routers in the network and use their WDS MAC list. In Lazy mode the wireless AP/Router sends a beacon.
- **WDS Encryption Type** – Sets the WDS encryption type, the options for which are determined by the Authentication Mode and the Encryption Type selected in the Security Settings.

**Note:** When WDS is disabled or the WDS Encryption Type is set to “none,” WDS encryption is also disabled.

- When Authentication Mode is set to Open, Shared, or WEP auto; WEP is the only WDS encryption type.
- When Authentication Mode is set to WPA Personal, or WPA2 Personal, the WDS encryption type may be TKIP or AES.
- None: Disables WDS encryption.
- WEP: Uses WEP keys for data encryption.
- **TKIP:** Uses Temporal Key Integrity Protocol (TKIP) keys for encryption as a replacement for WEP. TKIP avoids the problems of WEP static keys by dynamically changing data encryption keys.

Authentication Mode	Open
Encryption Type	WEP
Default Key ID	None
	WEP
Authentication Mode	WPA Personal
Encryption Type	TKIP
WPA/WPA2 Pre-Shared Key	TKIP
	AES
	TKIP/AES
WPA Group-Key ReKey Method	Disabled



- **AES:** Uses Advanced Encryption Standard (AES) keys for encryption. Use of AES-CCMP encryption is specified as a standard requirement for WPA2. Before implementing WPA2 in the network, be sure client devices are upgraded to WPA2-compliant hardware.
- **TKIP/AES:** Use both TKIP and AES keys for encryption. WPA2 defines a transitional mode of operation for networks moving from WPA security to WPA2. WPA2 Mixed Mode allows both WPA and WPA2 clients to associate to a common SSID interface. In mixed mode, the unicast encryption cipher (TKIP or AES-CCMP) is negotiated for each client.
- **WDS WPA/WPA2 Pre-Shared Key** – This option is available only when Authentication Mode is set to WPA Personal, WPA2 Personal or WPA/WPA2 Personal. Enter a key as an easy-to-remember form of letters and numbers. The WDS WPA/WPA2 Preshared Key can be input as ASCII string (8-63 characters) or Hexadecimal format (length is 64). Other bridge units must be configured with the same key to communicate with this unit.
- **WDS MAC List** – The physical layer address of other bridge units for which this unit communicates as a network node. (12 hexadecimal digits in the form “xx:xx:xx:xx:xx:xx”)

WDS MAC List
00:08:12:57:96:55
00:08:12:57:96:56
00:08:12:57:96:57
00:08:12:57:96:58

**Note:** In WDS Lazy mode any entries in the WDS MAC List are redundant because the MAC is pre-configured to 00:00:00:00:00:00.

## AP Client Settings

Wireless Access Point Client feature is a wireless client connection that connects the AP/Router to a remote Wi-Fi network.

AP Client Settings	
AP Client Support	<input checked="" type="checkbox"/> Enable
SSID of AP to connect	default
Authentication Mode	Open
Encryption Type	None

**Figure 5-24 AP Client Settings**

**AP Client Support** — Enable or disable this function. (Default: Disable)

**SSID of AP to connect** — The name of the target Wi-Fi network.

**Security Settings** — The security settings determine the authentication mode and the encryption type used to connect to the target network.

- **Authentication Mode** – Selects the authentication method used by the target Wi-Fi network. (WLAN1/WLAN2 Defaults: Open)

Authentication Mode	Shared
Encryption Type	Open

- **Open:** Enables the AP/Router to connect to a Wi-Fi network that does not require any authentication. In this mode the default encryption type is "None."

Authentication Mode	Open
Encryption Type	None

- **Shared:** The shared-key approach uses Wired Equivalent Privacy (WEP) to verify client identity by distributing a shared key to clients before attempting authentication.

Authentication Mode	Shared
Encryption Type	WEP
Default Key ID	1
Key 1	ASCII (5 or 13 chars)
Key 2	ASCII (5 or 13 chars)
Key 3	ASCII (5 or 13 chars)
Key 4	ASCII (5 or 13 chars)

- **WPA Personal or WPA2 Personal:** The WPA or WPA2 Personal mode uses a common password phrase, called a Pre-Shared Key, that must be manually distributed to all clients that want to connect to the network. Specify the required key for the target network as an easy-to-remember form of letters and numbers. The WPA Preshared Key can be input as ASCII string (8-63 characters) or Hexadecimal format (length is 64).

Authentication Mode	WPA2 Personal
Encryption Type	TKIP
WPA/WPA2 Pre-Shared Key	Pass Phrase (8-63 chars)
WPA Group-Key ReKey Method	Disabled
WPA2 Pairwise Master Key Cache Interval	10 minutes (default:10)
WPA2 Pre-Authentication Support	<input type="checkbox"/> Enable

- **Encryption Type** – Selects the encryption type to use for the target network.

- **None:** Disables data encryption.
- **WEP:** Selects WEP keys for data encryption.

Encryption Type	TKIP
WPA/WPA2 Pre-Shared Key	None WEP TKIP AES

- **TKIP:** Uses Temporal Key Integrity Protocol (TKIP) keys for encryption. WPA specifies TKIP as the data encryption method to replace WEP. TKIP avoids the problems of WEP static keys by dynamically changing data encryption keys.
- **AES:** Uses Advanced Encryption Standard (AES) keys for encryption. WPA2 uses AES Counter-Mode encryption with Cipher Block Chaining Message Authentication Code (CBC-MAC) for message integrity. The AES Counter-Mode/CBCMAC Protocol (AES-CCMP) provides extremely robust data confidentiality using a 128-bit key. Use of AES-CCMP encryption is specified as a standard requirement for WPA2.

- **Default Key ID** – Sets the WEP key used for authentication. (Default: 1; Range: 1~4)

Default Key ID	1
Key 1	1
	2
	3
	4

- **Key 1 ~ Key 4** – Sets WEP key values. The user must first choose between ASCII or Hexadecimal keys. At least one key must be specified. Each WEP key has an index number. Enter key values that match the key type and length settings.

Key 1	ASCII (5 or 13 chars)
Key 2	ASCII (5 or 13 chars)
	Hex (10 or 26 hex)
	ASCII (5 or 13 chars)

Standard keys are either 5 or 13 alphanumeric characters; or 10 or 26 hexadecimal digits. (Default: ASCII, no preset value)

- **WPA/WPA2 Pre-Shared Key** – This option is available only when Authentication Mode is set to WPA Personal, WPA2 Personal or WPA/WPA2 Personal. Enter a key as an easy-to-remember form of letters and numbers. The WDS WPA/WPA2 Preshared Key can be input as ASCII string (8-63 characters) or Hexadecimal format (length is 64).

## MAC Access Control Lists

Wireless clients can be authenticated for network access by checking their MAC address against a local database configured on the wireless AP/Router. You can configure a list of up to 32 wireless client MAC addresses in the filter list to either allow or deny network access. MAC ACL configuration is the same for both WLAN1 and WLAN2.

### WLAN1 MAC Access Control Settings

MAC Access Policy: Disabled (default: disabled)

**MAC Access Policy:**  
 The MAC address filter can be configured to allow or deny network access to listed clients.  
 Selects "Allow All but Reject those on MAC List" to permit access from all MAC addresses except those on the ACL list, or "Reject All but Allow those on MAC List" to block access from all MAC addresses except those on the ACL list.

Save
Cancel

Enable	MAC Address	Description	Action
<input type="checkbox"/>			<span style="border: 1px solid #ccc; padding: 2px 5px;">Change</span> <span style="border: 1px solid #ccc; padding: 2px 5px; margin-left: 5px;">Add</span>
Disable	1a:22:33:44:2b:10		<span style="border: 1px solid #ccc; padding: 2px 5px;">Edit</span> <span style="border: 1px solid #ccc; padding: 2px 5px; margin-left: 5px;">Delete</span>

### Associated Client List

MAC	Description

Figure 5-25 MAC Filter

**WLAN1/WLAN2 MAC Access Control Settings** — Configures all MAC ACL parameters. (Maximum 64 entries are allowed.)

- **MAC Access Policy** – The MAC address filter can be configured to allow or deny network access to listed clients. Select "Allow All but Reject those on MAC List" to permit access from all MAC addresses except those on the ACL list, or "Reject All but Allow those on MAC List" to block access from all MAC addresses except those on the ACL list. (Default: Disabled)
- **Submit** – Implements the selected MAC Access Policy.

MAC Access Policy: Disabled

- Disabled
- Reject All but Allow those on MAC List
- Allow All but Reject those on MAC List

- **Reset** – Restores the previous MAC Access Policy configuration information.
- **Enable** – Activates the MAC address into the ACL.
- **MAC Address** – MAC Address to filter, specified in the form of 12 hexadecimal digits, “xx:xx:xx:xx:xx:xx”.
- **Description** – An optional parameter to help identify the selected MAC address. (Range: 1~16 characters)
- **Action** – Specifies an action to take on the MAC ACL filtering configuration.
  - **Change**: By selecting a MAC ACL entry from the table its parameters display in an editable form. Click "Change" to save parameters once you have updated them.
  - **Add**: Adds a newly configured MAC ACL entry to the list.
  - **Edit**: Click "Edit" to highlight a configured MAC ACL filtering rule for changing its parameters.
  - **Delete**: Deletes a MAC entry from the list.

**Associated Client List** — Lists the MAC addresses of wireless clients currently associated to the wireless AP/Router.

- **MAC** – A wireless client MAC address.
- **Description** – An optional parameter that helps identify the MAC address of the associated client.

## Wi-Fi Protected Setup (WPS)

Wi-Fi Protected Setup (WPS) is designed to ease installation and activation of security features in wireless networks. WPS has two basic modes of operation, Push-button Configuration (PBC) and Personal Identification Number (PIN). The WPS PIN setup is optional to the PBC setup and provides more security. The WPS button on the wireless AP/Router can be pressed at any time to allow a single device to easily join the network.

**Note:** WPS settings only apply to WLAN1.

The WPS Settings page includes configuration options for setting WPS device PIN codes and activating the virtual WPS button.

WPS Settings	
WiFi Protected Setup	<input checked="" type="checkbox"/> Enable (default:enabled)
Lock Security Setting	<input type="checkbox"/> Enable (default:disabled)

AP Security Information	
WPS Configured	No
WPS Status	Unused
SSID	SMC
Auth Mode	Open
Encryption Type	None
WPAPSK	

WPS Config	
WPS Mode	as Registrar - add other enrollee to this device ▾
WPS Config Method	PIN - Personal Identification Number ▾
PIN Code of this AP	01805420
Add Enrollee PIN Code	<input type="text"/>

**Figure 5-26 WPS Settings**

**WPS Settings** — Enables WPS, locks security settings, and refreshes WPS configuration information.

- **WiFi Protected Setup** – Enables WPS. (Default: Enabled)
- **Lock Security Setting** – Enabling this setting and clicking “Submit” or “Reset” allows the wireless AP/Router to retain the previous WPS negotiated security setup after a reboot or power off. Upon booting the unit will not re-authenticate

clients that were retained in memory. Only new clients will require authentication. (Default: Disabled)

- **Submit** – Enables the WPS configuration.
- **Reset** – Restores the previous WPS configuration information.

**AP Security Information** — Provides detailed WPS statistical information.

- **WPS Configured** – States if WPS for wireless clients has been configured for this device. (Default: no)
- **WPS Status** – Displays if there is currently any WPS traffic connecting to the wireless AP/Router. (Options: Start WSC Process; Idle; Default: Idle)
- **SSID** – The service set identifier for WLAN1. (Default: SMC)
- **Auth Mode** – The method of authentication used. (Default: Open)
- **Encryption Type** – The encryption type used for WLAN1. (Default: None)
- **WPAPSK** – Displays the pre-shared key if WPA/WPA2 has been enabled.
- **Refresh** – Refreshes the AP Security Information statistics.

**WPS Config** — Configures WPS settings for the wireless AP/Router.

- **WPS Mode** – The wireless AP/Router can be set as a registrar (master) device or an enrollee (client) device:

WPS Mode	as Registrar - add other enrollee to this device
WPS Config Method	as Registrar - add other enrollee to this device
Add Enrollee PIN Code	as Enrollee - add this device to other registrar

- **as Registrar:** When the wireless AP/Router is set as the registrar device, enter the PIN code/s of the enrollee device/s and click “start WPS Config” to add the client/s to the network.

**Note:** When the wireless AP/Router is the registrar device, the enrollee device can join the network by entering the wireless AP/Router’s PIN code “61773981.”

- **as Enrollee:** When the wireless AP/Router is set as the enrollee device, the default PIN-Code for the unit is displayed. Click “start WPS Config” to join the network.

- **WPS Config Method** – Selects between methods of broadcasting the WPS beacon to network clients wanting to join the network:

WPS Config Method	PIN - Personal Identification Number
Add Enrollee PIN Code	PIN - Personal Identification Number PBC - Push Button Communication

- **PIN:** The wireless AP/Router, along with other WPS devices, such as notebook PCs, cameras, or phones, all come with their own eight-digit PIN code. When one device, the WPS enrollee, sends a PIN code to the wireless AP/Router, it becomes the WPS registrar. After configuring PIN-Code information you must press “start WPS Config” to send the beacon, after which you have up to two minutes to activate WPS on devices that need to join the network.
- **PBC:** This has the same effect as pressing the physical WPS button that is located on the front of the wireless AP/Router. After checking this option and clicking “Start WPS Config” you have up to two minutes to activate WPS on devices that need to join the network.

- **Add Enrollee PIN Code** – In Registrar mode enter the PIN Code for the WDS device that wants to join the network.
- **PIN Code of this AP** – In Enrollee mode this displays the PIN Code for the wireless AP/Router. The default is exclusive for each unit.
- **Start WPS Config** – Sends a handshake beacon to devices wanting to join the network, for a duration of two minutes.

## Routing

Routing setup allows a manual method that is used to set up routing between networks. The network administrator configures static routes in a router by entering routes directly into the routing table of a router. Static routing has the advantage of being predictable and easy to configure.

### Static Route

This screen is used to manually configure static routes to other IP networks, subnetworks, or hosts. Click "Network Settings" followed by "Static Route." (Maximum 32 entries are allowed.)

### Routing

Static Route				
Enable	Target	Netmask	Gateway	Action
<input type="checkbox"/>	<input type="text"/>	255.255.255.0 <input type="button" value="v"/>	<input type="text"/>	<input type="button" value="Change"/> <input type="button" value="Add"/>
Disable	100.0.0.0	255.255.255.0	192.168.1.10	<input type="button" value="Edit"/> <input type="button" value="Delete"/>
Disable	10.0.0.0	255.255.255.0	192.168.1.1	<input type="button" value="Edit"/> <input type="button" value="Delete"/>
Enable	100.10.0.0	255.255.255.0	192.168.10.1	<input type="button" value="Edit"/> <input type="button" value="Delete"/>

**Figure 5-27 Static Route (Router mode)**

- **Enable** – Enables the configured route. (Default: Disabled)
- **Target** – A destination network or specific host to which packets can be routed.
- **Netmask** – The subnetwork associated with the destination. This is a template that identifies the address bits in the destination address used for routing to specific subnets. Each bit that corresponds to a "1" is part of the network/subnet number; each bit that corresponds to "0" is part of the host number.
- **Gateway** – The IP address of the router at the next hop to which matching frames are forwarded.
- **Action** – Specifies an action to take on a static route.
  - **Change:** By selecting a configured route from the routing table its parameters display in an editable form. Click "Change" to save parameters once you have updated them.
  - **Add:** Adds a newly configured route to the list.

- **Edit:** Click "Edit" to highlight an entry in the static MAC list for changing its parameters.
- **Delete:** Deletes a static route from the list.

## Dynamic Route

The wireless AP/Router supports RIP 1 and RIP 2 dynamic routing protocol. Routing Information Protocol (RIP) is the most widely used method for dynamically maintaining routing tables. RIP uses a distance vector-based approach to routing. Routes are chosen to minimize the distance vector, or hop count, which serves as a rough estimate of transmission cost. Each router broadcasts its advertisement every 30 seconds, together with any updates to its routing table. This allows all routers on the network to build consistent tables of next hop links which lead to relevant subnets.

Dynamic Route	
WAN Interface	RIP1+RIP2 ▼
LAN Interface	Disable ▼

**Figure 5-28 Dynamic Route (Router mode)**

- **WAN Interface** – Specifies RIP1, RIP2, RIP1/RIP2, or disables the function for the WAN interface.
- **LAN Interface** – Specifies RIP1, RIP2, RIP1/RIP2, or disables the function for the LAN interface.



## Multicast Routing

Multicasting is used to support real-time applications such as videoconferencing or streaming audio. A multicast server does not have to establish a separate connection with each client. It merely broadcasts its service to the network, and any hosts that want to receive the multicast register with their local multicast router. Although this approach reduces the network overhead required by a multicast server, the broadcast traffic must be carefully pruned at every multicast network device it passes through to ensure that traffic is only passed on to the hosts that have subscribed to the service.

This device uses IGMP (Internet Group Management Protocol) Snooping to monitor IGMP service requests passing between multicast clients and servers, and dynamically configure the ports that need to forward multicast traffic.

**IGMP Snooping**

IGMP Snooping	<input checked="" type="checkbox"/> Enable	<b>IGMP Snooping:</b> Enable igmp snooping function
---------------	--	--

**IGMP Proxy**

IGMP Proxy	<input checked="" type="checkbox"/> Enable	<b>IGMP Proxy:</b> Enables multicast routing to activate the function of multipoint communications.
Quick Leave	<input type="checkbox"/> Enable	

**WAN Multicast Routing**

Enable	IP Address	Net Mask	Action
<input type="checkbox"/>	<input style="width: 100%;" type="text"/>	255.255.255.252 <small>▼</small>	<input type="button" value="Change"/> <input type="button" value="Add"/>
Enable	192.168.1.1	255.255.255.252	<input type="button" value="Edit"/> <input type="button" value="Delete"/>

**Figure 5-29 Multicast Route (Router mode)**

**IGMP Snooping** — The wireless AP/Router can passively snoop on IGMP Query and Report packets transferred between IP multicast routers and IP multicast host groups to identify the IP multicast group members. It simply monitors the IGMP packets passing through it, picks out the group registration information, and configures the multicast filters accordingly.

- **Enable** – Enables IGMP snooping on the wireless AP/Router.

**IGMP Proxy** — Collects and sends multicast group membership information onto the upstream interface based on IGMP messages monitored on downstream interfaces, and forwards multicast traffic based on that information.

- **IGMP Proxy** – Enables IGMP proxy on the wireless AP/Router.
- **Quick Leave** – The wireless AP/Router can immediately delete a member port of a multicast service if a leave packet is received at that port.

**WAN Multicast Routing** — IP addresses of upstream multicast routers on the WAN interface. You can add, edit, and delete IP addresses from the list.

- **IP Address** – Specifies an IP address to route to.
- **Net Mask** – Specifies a network mask.

## Firewall

The wireless AP/Router provides extensive firewall protection by restricting connection parameters to limit the risk of intrusion and defending against a wide array of common hacker attacks.

## NAT

Network Address Translation (NAT) is a standard method of mapping multiple "internal" IP addresses to one "external" IP address on devices at the edge of a network. For the wireless AP/Router, the internal (local) IP addresses are the IP addresses assigned to PCs and wireless clients by the DHCP server, and the external IP address is the IP address assigned to the WAN port.

If you configure the wireless AP/Router as a virtual server, remote users accessing services such as web or FTP at your local site through public IP addresses can be automatically redirected to local servers configured with private IP addresses. In other words, depending on the requested service (TCP/UDP port number), the wireless AP/Router redirects the external service request to the appropriate server (located at another internal IP address).

For example, if you set Type/Public Port to TCP/80 (HTTP or web) and the Private IP/Port to 192.168.2.2/80, then all HTTP requests from outside users will be transferred to 192.168.2.2 on port 80. Therefore, by just entering the IP address provided by the ISP, Internet users can access the service they need at the local address to which you redirect them.

The more common TCP service port numbers include: HTTP: 80, FTP: 21, Telnet: 23, and POP3: 110.

Some applications, such as Internet gaming, videoconferencing, Internet telephony and others, require multiple connections. These applications cannot work with Network Address Translation (NAT) enabled. If you need to run applications that require multiple connections, use port mapping to specify the additional public ports to be opened for each application.

Click "Network Settings" followed by "NAT."

NAT Settings						
Network Address Translation	<input checked="" type="checkbox"/>	Enable				
IPSec Pass Through	<input checked="" type="checkbox"/>	Enable				
PPTP Pass Through	<input checked="" type="checkbox"/>	Enable				
L2TP Pass Through	<input checked="" type="checkbox"/>	Enable				
SIP ALG	<input type="checkbox"/>	Enable				
NetMeeting ALG	<input type="checkbox"/>	Enable				
Window Messenger File Transfer ALG	<input type="checkbox"/>	Enable				
DMZ	<input type="checkbox"/>	Enable				
Non-standard FTP Port						

**NAT:**  
Network Address Translation (NAT) is a standard method of mapping multiple "internal" IP addresses to one "external" IP address on devices at the edge of a network.

**ALG:**  
Application Layer Gateway (ALG) traversal filters to be used to support address and port translation for certain application layer protocols.

**DMZ:**  
Demilitarized Zone (DMZ) enables a specified host PC on the local network to access the Internet without any firewall protection.

Virtual Server Mapping						
Enable	WAN IP Alias	WAN Port	Protocol	LAN IP	LAN Port	Action
<input type="checkbox"/>			TCP			<input type="button" value="Change"/> <input type="button" value="Add"/>

Port Trigger						
Enable	Trigger Port	Trigger Type	Public Port	Public Type	Action	
<input type="checkbox"/>		TCP		TCP	<input type="button" value="Change"/> <input type="button" value="Add"/>	

Port Forward						
Enable	Forward Port	Forward Type	Forward IP	Action		
<input type="checkbox"/>		TCP		<input type="button" value="Change"/> <input type="button" value="Add"/>		

Figure 5-30 NAT (Router mode)

**NAT Settings** — Enables NAT related settings.

- **Network Address Translation** – Enables the forwarding of TCP/UDP packets through a NAT device.
- **IPSec Pass Through** – Enables tunnelling encrypted Internet Protocol Security (IPSec) packets through a NAT device.
- **PPTP Pass Through** – Enables tunnelling Point-to-Point Tunneling Protocol (PPTP) packets through a NAT device.
- **L2TP Pass Through** – Enables tunnelling Layer 2 Tunnelling Protocol (L2TP) packets through a NAT device.
- **SIP ALG** – Allows SIP Application Layer Gateway (ALG) traversal filters to be used to support address and port translation for certain application layer protocols.
- **NetMeeting ALG** – Allows NetMeeting ALG traversal filters to be used to support address and port translation for certain application layer protocols.
- **Window Messenger File Transfer ALG** – Enables Window Messenger File Transfer ALG to transmit packets through proxy servers.
- **DMZ** – Enables a specified host PC on the local network to access the Internet without any firewall protection. Some Internet applications, such as interactive games or videoconferencing, may not function properly behind the wireless AP/Router's firewall. By specifying a Demilitarized Zone (DMZ) host, the PC's TCP ports are completely exposed to the Internet, allowing open two-way communication. The host PC should be assigned a static IP address (which is mapped to its MAC address) and this must be configured as the DMZ LAN IP.

- **DMZ LAN IP** – Specifies the IP address of the DMZ.
- **Non-standard FTP port** – Enables routing of traffic through a non-standard FTP port.
- **Submit** – Saves the current NAT configuration.
- **Reset** – Restores the previous NAT configuration information.

**Virtual Server Mapping** — Using the NAT Virtual Server Mapping feature, remote users can access different servers on your local network using your single public IP address. (Maximum 32 entries are allowed.)

- **Enable** – Enables port mapping for the specified IP address. (Default: Disabled)
- **WAN IP Alias** – Selects an alias IP address to route traffic to and from the WAN port. Using IP aliasing increases the traffic the WAN port can handle.
- **WAN Port** – Specifies the WAN port number, or a port range, for example “4040-4080.” (Range: 1~65535)
- **Protocol** – Specifies the port type, TCP or UDP. (Default: TCP)
- **LAN IP** – The IP address of the server on the local Ethernet network. The specified address must be in the same subnet as the wireless AP/Router and its DHCP server address pool.
- **LAN Port** – Specifies the LAN port number, or a port range, for example “4040-4080.” (Range: 1~65535)
- **Action** – Specifies an action to take on the virtual server map.
  - **Change:** By selecting a configured virtual server map from the table its parameters display in an editable form. Click "Change" to save parameters once you have updated them.
  - **Add:** Adds a newly configured map to the list.
  - **Edit:** Click "Edit" to highlight a mapping rule entry in the list for changing its parameters.
  - **Delete:** Deletes a mapping rule from the list.

**Port Trigger** — Port triggering is a way to automate port forwarding in which outbound traffic on predetermined ports ("triggering ports") causes inbound traffic to specific incoming ports to be dynamically forwarded to the initiating host while the outbound ports are in use. (Maximum 32 entries are allowed.)

- **Enable** – Enables port triggering on the specified ports. (Default: Disabled)
- **Trigger Port** – Specifies the outbound port, or port range, for example “4040-4080.” (Range: 1~65535, or number1-number2)
- **Trigger Type** – Specifies the trigger port type, TCP or UDP. (Default: TCP)
- **Public Port** – Specifies the port to forward traffic to.
- **Public Type** – Specifies the forwarded port type, TCP or UDP. (Default: TCP)
- **Action** – Specifies an action to take on the port triggering configuration.
  - **Change:** By selecting a configured port trigger from the table its parameters display in an editable form. Click "Change" to save parameters once you have updated them.

- **Add:** Adds a newly configured port trigger to the list.
- **Edit:** Click "Edit" to highlight a port trigger rule in the list for changing its parameters.
- **Delete:** Deletes a port trigger rule from the list.

**Port Forward** — Port forwarding (sometimes referred to as tunneling) is the act of forwarding a network port from one network node to another. This technique can allow an external user to reach a port on a private IP address (inside a LAN) from the outside through a NAT-enabled router. (Maximum 32 entries are allowed.)

- **Enable** – Enables port forwarding on the specified port. (Default: Disabled)
- **Forward Port** – Specifies the port through which traffic is forwarded.
- **Forward Type** – Specifies the forwarding port type, TCP or UDP. (Default: TCP)
- **Forward IP** – Specifies the IP address on the local network to allow external access to.
- **Action** – Specifies an action to take on the port forwarding configuration.
  - **Change:** By selecting a port forwarding configuration from the table its parameters display in an editable form. Click "Change" to save parameters once you have updated them.
  - **Add:** Adds a newly configured port that allows forwarding in to the local area network to the list.
  - **Edit:** Click "Edit" to highlight a forwarding port rule in the list for changing its parameters.
  - **Delete:** Deletes a port forwarding rule from the list.

## Packet Filtering

The wireless AP/Router provides extensive firewall protection through packet filtering.

Packet filtering restricts connection parameters to limit the risk of intrusion and defends against a wide array of common hacker attacks. Packet filtering allows the unit to permit, deny or proxy traffic through its ports.

**WAN Packet Filter**

WAN Packet Filter  Enable

**WAN Packet Filter:**  
Uses IP Filters to deny particular WAN IP addresses from the Internet.

Enable	Source IP	Destination Port	Protocol	Block	Day	Time	Action
<input type="checkbox"/>	<input type="text"/>	<input type="text"/>	TCP	Always	All	00:00 ~ 00:00	<input type="button" value="Change"/> <input type="button" value="Add"/>

---

**LAN Packet Filter**

LAN Packet Filter  Enable

**LAN Packet Filter:**  
Uses IP Filters to deny particular LAN IP addresses from accessing the Internet.

Enable	Source IP	Destination Port	Protocol	Block	Day	Time	Action
<input type="checkbox"/>	<input type="text"/>	<input type="text"/>	TCP	Always	All	00:00 ~ 00:00	<input type="button" value="Change"/> <input type="button" value="Add"/>

---

**MAC Packet Filter**

MAC Packet Filter  Enable

**MAC Packet Filter:**  
Uses MAC Filters to deny computers within the local area network from accessing the Internet.

Enable	MAC Address	Block	Day	Time	Action
<input type="checkbox"/>	<input type="text"/>	Always	All	00:00 ~ 00:00	<input type="button" value="Change"/> <input type="button" value="Add"/>

**Figure 5-31 Packet Filtering (Router mode)**

**WAN Packet Filter** — Globally enables WAN packet filtering. (Default: Enabled, maximum 32 entries are allowed.)

- **Enable** – Enables the filtering rule on a specified IP address and TCP/UDP port. (Default: Disabled)
- **Source IP** – Specifies the IP address to block WAN traffic from.
- **Destination Port** – Specifies the port to block traffic from the specified WAN IP address from reaching.
- **Protocol** – Specifies the destination port type, TCP or UDP. (Default: TCP)
- **Block** – Specifies if traffic should be blocked "Always" or configured "by Schedule."
- **Day** – Specifies the day or days of the week on which to block traffic.
- **Time** – Specifies the time of day during which to block traffic.
- **Action** – Specifies an action to take on the WAN packet filtering configuration.

- **Change:** By selecting a packet filtering configuration from the table its parameters display in an editable form. Click "Change" to save parameters once you have updated them.
- **Add:** Adds a newly configured packet filter that denies forwarding in to the local area network to the list.
- **Edit:** Click "Edit" to highlight a packet filtering rule in the list for changing its parameters.
- **Delete:** Deletes a packet filtering rule from the list.

**LAN Packet Filter** — Globally enables LAN packet filtering. (Default: Enabled, maximum 32 entries are allowed.)

- **Enable** – Enables the filtering rule on a specified IP address and TCP/UDP port. (Default: Enabled)
- **Source IP** – Specifies the IP address to block LAN traffic from.
- **Destination Port** – Specifies the port to block traffic from the specified LAN IP address from reaching.
- **Protocol** – Specifies the destination port type, TCP or UDP. (Default: TCP)
- **Block** – Specifies if traffic should be blocked "Always" or configured "by Schedule."
- **Day** – Specifies the day or days of the week on which to block traffic.
- **Time** – Specifies the time of day during which to block traffic.
- **Action** – Specifies an action to take on the LAN packet filtering configuration.
  - **Change:** By selecting a packet filtering configuration from the table its parameters display in an editable form. Click "Change" to save parameters once you have updated them.
  - **Add:** Adds a newly configured packet filter that denies forwarding in to the local area network to the list.
  - **Edit:** Click "Edit" to highlight a packet filtering rule in the list for changing its parameters.
  - **Delete:** Deletes a packet filtering rule from the list.

**MAC Packet Filter** — Globally enables MAC packet filtering. (Default: Enabled, maximum 32 entries are allowed.)

- **Enable** – Enables the filtering rule on a specified MAC address. (Default: Disabled)
- **MAC Address** – Specifies the MAC address to block traffic from.
- **Block** – Specifies if traffic should be blocked "Always" or configured "by Schedule."
- **Day** – Specifies the day or days of the week on which to block traffic.
- **Time** – Specifies the time of day during which to block traffic.
- **Action** – Specifies an action to take on the MAC packet filtering configuration.
  - **Change:** By selecting a packet filtering configuration from the table its parameters display in an editable form. Click "Change" to save parameters once you have updated them.
  - **Add:** Adds a newly configured packet filter that denies forwarding in to the local area network to the list.

- **Edit:** Click "Edit" to highlight a preconfigured packet filtering rule for changing its parameters.
- **Delete:** Deletes a packet filtering rule from the list.

## URL Filter

By filtering inbound Uniform Resource Locators (URLs) the risk of compromising the network can be reduced. URLs are commonly used to point to websites. By specifying a URL or a keyword contained in a URL traffic from that site may be blocked.

Click "Network Settings" followed by "URL Filter."

Enable	Client IP	URL Filter String	Action
<input type="checkbox"/>	<input type="text"/>	<input type="text"/>	<input type="button" value="Change"/> <input type="button" value="Add"/>
Enable	132.167.1.1	XXX	<input type="button" value="Edit"/> <input type="button" value="Delete"/>
Disable	139.168.1.1	adult	<input type="button" value="Edit"/> <input type="button" value="Delete"/>

**Figure 5-32 URL Filtering (Router mode)**

**URL Filter** — Globally enables URL filtering. (Default: Enabled, maximum 32 entries are allowed.)

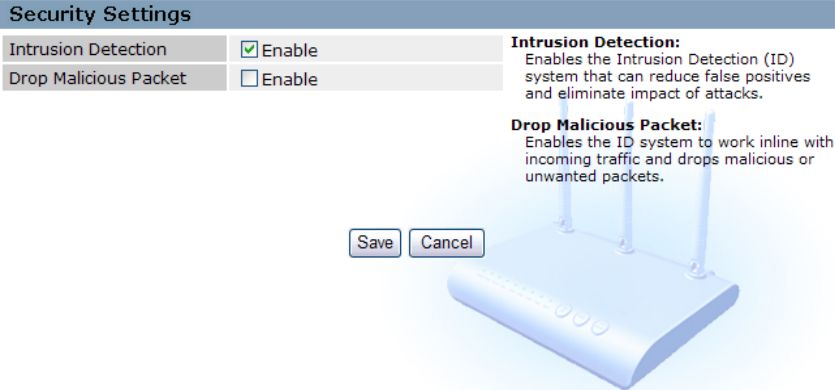
- **Enable** – Enables the filtering rule on a specified LAN IP address. (Default: Disabled)
- **Client IP** – Specifies the LAN IP address that traffic should be blocked from.
- **URL Filter String** – Specifies either a string, or a specific website address that traffic is to be blocked from. May be in the form of a text or number string with no spaces, or a website address.
- **Action** – Specifies an action to take on the URL packet filtering configuration.
  - **Change:** By selecting a URL filtering configuration from the table its parameters display in an editable form. Click "Change" to save parameters once you have updated them.
  - **Add:** Adds a newly configured URL filter that denies forwarding in to the local area network to the list.
  - **Edit:** Click "Edit" to highlight a URL filtering rule in the list for changing its parameters.
  - **Delete:** Deletes a URL filtering rule from the list.



## Security Settings

The Security Setting page enables intrusion detection (ID), a type of security management system for computers and networks. An ID system gathers and analyzes information from various areas within a computer or a network to identify possible security breaches, which include both intrusions (attacks from outside the organization) and misuse (attacks from within the organization). ID uses vulnerability assessment (sometimes referred to as scanning), which is a technology developed to assess the security of a computer system or network.

Click on "Network Settings" followed by "Security Settings."



**Security Settings**

Intrusion Detection	<input checked="" type="checkbox"/> Enable	<b>Intrusion Detection:</b> Enables the Intrusion Detection (ID) system that can reduce false positives and eliminate impact of attacks.
Drop Malicious Packet	<input type="checkbox"/> Enable	<b>Drop Malicious Packet:</b> Enables the ID system to work inline with incoming traffic and drops malicious or unwanted packets.

Save Cancel

**Figure 5-33 Security Settings (Router mode)**

- **Intrusion Detection** – Enables the ID system. (Default: Disabled)
- **Drop Malicious Packet** – Enables the ID system to work inline with incoming traffic and drops malicious or unwanted packets. (Default: Disabled)

## Service Settings

### DHCP

The wireless AP/Router includes a Dynamic Host Configuration Protocol (DHCP) server that can assign temporary IP addresses to any attached host requesting the service. The unit can support up to 253 local clients. Addresses are assigned to clients from a common address pool configured on the unit. Configure an address pool by specifying start and end IP addresses. Be sure not to include the unit's IP address in the address pool range. Click on "Network Settings" followed by "DHCP."

DHCP Server Settings	
DHCP Server	<input checked="" type="checkbox"/> Enable (default:enabled)
Assigned DHCP IP Address	Start IP: 192.168.2. <input type="text" value="100"/>
	End IP: 192.168.2. <input type="text" value="199"/>
DHCP IP Lease Time	<input type="text" value="86400"/> seconds (60..864000)

**DHCP Server:**  
The Wireless AP/Router includes a Dynamic Host Configuration Protocol (DHCP) server that can assign temporary IP addresses to any attached host requesting the service.

**Assigned DHCP IP Address:**  
Specifies the start and end IP addresses of a range that the DHCP server can allocate to DHCP clients.

DHCP Static Map				
MAC	IP	Description	Action	
<input type="text"/>	<input type="text"/>	<input type="text"/>	<input type="button" value="Change"/>	<input type="button" value="Add"/>

DHCP Client List					
Type	Hostname	MAC	IP	Description	Expire Time
Reserved	sherry_hsiao_nb	00:1c:bf:10:df:6b	192.168.2.104		Fri Jan 2 16:50:21 1970

Figure 5-34 DHCP Settings (Router mode)

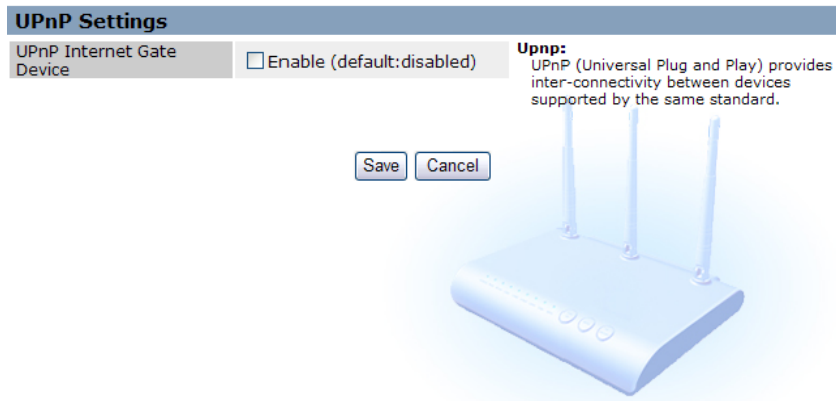
- **DHCP Server** – Enables the DHCP server. (Default: Enabled)
- **Assigned DHCP IP Address** – Specify the start and end IP addresses of a range that the DHCP server can allocate to DHCP clients. Note that the address pool range is always in the same subnet as the unit's IP setting. The maximum clients that the unit can support is 253.
- **DHCP IP Lease Time** – Select a time limit for the use of an IP address from the IP pool. When the time limit expires, the client has to request a new IP address. The lease time is expressed in seconds.  
(Default: 86400 seconds; Range: 60~864000 seconds)
- **Save** – Saves the current DHCP configuration.
- **Cancel** – Restores the previous DHCP configuration information.
- **DHCP Static Map** – Maps client MAC addresses to static IP addresses. This allows specified clients to always be assigned the same IP when they request settings. (Maximum 32 entries are allowed.)

- **MAC:** The physical layer address used to uniquely identify the static IP address to be assigned to the specified client MAC address. The IP address must be in the same subnet as the wireless AP/Router..
- **IP:** The static IP address to be assigned to the specified client MAC address. The IP address must be in the same subnet as the wireless AP/Router.
- **Description:** An optional brief description that can be used to help identify the client device.
- **Action:** Specifies changes or additions to the DHCP static map table.
  - **Change:** By selecting an already configured DHCP static map its parameters display in an editable form. Click “Change” to save parameters once you have modified them.
  - **Add:** Adds a newly configured DHCP static map to the list.
  - **Edit:** Click “Edit” to highlight an entry in the static DHCP client list for changing its parameters.
  - **Delete:** Deletes a DHCP static map from the list.
- **DHCP Client List** – Lists information about associated DHCP clients.
  - **Type:** Describes the type of DHCP client.
  - **Hostname:** The hostname of the DHCP client.
  - **MAC:** The MAC address of the DHCP client.
  - **IP:** The IP address of the DHCP client.
  - **Description:** Optional description of the DHCP client.
  - **Expire Time:** The time after which the connection will expire and the DHCP client must request a new IP address.

## UPnP Settings

UPnP (Universal Plug and Play) provides inter-connectivity between devices supported by the same standard. UPnP is based on standard Internet protocols, such as TCP/IP, UDP, and HTTP.

Click on “Network Settings” followed by “UPnP.”



**Figure 5-35 UPnP Settings (Router mode)**

**UPnP Settings** — Allows the device to advertise its UPnP capabilities.

- **UPnP Internet Gate Device** – Enables UPnP on the wireless AP/Router. (Default: Disabled)
- **Save** – Saves the enabled UPnP configuration.
- **Cancel** – Restores the previous UPnP configuration information.

**UPnP Map** — Displays UPnP statistics.

- **Remote Host** – Displays the UPnP host device on the WAN.
- **External Port** – Displays the external WAN port from which UPnP discovery is broadcast to the wireless AP/Router.
- **Internal Client** – Displays the LAN connected UPnP supporting device.
- **Internal Port** – Displays the LAN port to which the internal client is connected.
- **Protocol** – Specifies the protocol used, TCP, UDP, or HTTP.
- **Duration** – Displays the time the device will advertise its UPnP capabilities, after which it must send a renewal message. It is generally expected that a device will display a duration advertisement for 1800 seconds (30 minutes) or more.
- **Description** – Optional parameter that describes the device to a network administrator.
- **Refresh** – Refreshes the UPnP Map statistics.

## DDNS Settings


Dynamic DNS (DDNS) provides users on the Internet with a method to tie a specific domain name to the unit's dynamically assigned IP address. DDNS allows your domain name to follow your IP address automatically by changing your DNS records when your IP address changes.

The wireless AP/Router provides access to three DDNS service providers, DynDns.org, Non-IP.com and ZoneEdit.com. To set up an DDNS account, visit the websites of these service providers at [www.dyndns.org](http://www.dyndns.org), [www.non-ip.com](http://www.non-ip.com), or [www.zoneedit.com](http://www.zoneedit.com).

Click on "Network Settings" followed by "DDNS."

DDNS Settings	
DDNS	<input checked="" type="checkbox"/> Enable
DDNS Server Type	DynDns.org ▼
DDNS Username	<input type="text"/>
DDNS Password	<input type="password"/>
Confirmed Password	<input type="password"/>
Hostname to register	<input type="text"/>

**DDNS:**  
Dynamic DNS (DDNS) provides users on the Internet with a method to tie a specific domain name to the unit's dynamically assigned IP address.



**Figure 5-36 DDNS Settings (Router mode)**

- **DDNS** – Enables DDNS. (Default: Disabled)
- **DDNS Server Type** – Specifies the DDNS service provider, DynDns.org, Non-IP.com, or ZoneEdit.com. (Default: DynDns.org)
- **DDNS Username** – Specifies your username for the DDNS service.
- **DDNS Password** – Specifies your password for the DDNS service.
- **Confirmed Password** – Prompts you to re-enter your chosen password.
- **Hostname to register** – Specifies the prefix to identify your presence on the DDNS server.
- **Submit** – Saves and sends the enabled DDNS configuration to the DDNS server.
- **Reset** – Restores the previous DDNS configuration information.


## System Log Settings

The wireless AP/Router supports a logging process that controls error messages saved to memory or sent to a Syslog server. The logged messages serve as a valuable tool for isolating wireless AP/Router and network problems.

The System Log Settings page controls the type of logging message that the wireless AP/Router can send.

System Log Settings	
System Log	<input checked="" type="checkbox"/> Enable
Log Level	4 Warning (default: 4)
Total Log Size	10 kbytes (default: 10)
Remote Log	<input checked="" type="checkbox"/> Enable
Remote Log Server Address	your.syslog.server
Remote Log Server Port	514 (1..65535, default: 514)
Log to Remote and Local	<input type="checkbox"/> Enable

**System Log:**  
The Wireless AP/Router supports a logging process that controls error messages saved to memory or sent to a Syslog server.



**Figure 5-37 System Log Settings**

- **System Log** – Enables local storage of system logs concerned with the wireless AP/Router only. (Default: Disabled)
- **Log Level** – Configures the minimum severity level for event logging. The system allows you to limit the messages that are logged by specifying the minimum severity level. (Default: 4 Warning)
  - **1 Alert** – An error condition requiring immediate user intervention to prevent a problem.
  - **2 Critical** – An error condition that may require user intervention.
  - **3 Error** – An error condition that does not cause significant problems with normal operation.
  - **4 Warning** – An error condition that does not cause system problems but may require attention.
  - **5 Notice** – A system condition that does not cause system problems but should be noted.
  - **6 Info** – Informational message only.
  - **7 Debug** – Sends the lowest level of system log messages only. Debug messages carry information for debugging software.
  - **Disabled** – Disables sending of any logging messages.

System Log	<input checked="" type="checkbox"/> Enable
Log Level	4 Warning
Total Log Size	1 Alert
Remote Log	2 Critical
Remote Log Server Address	3 Error
Remote Log Server Port	4 Warning
Log to Remote and Local	5 Notice
	6 Info
	7 Debug
	Disabled

- **Total Log Size** – Indicates the amount of RAM or Flash memory available for logging messages. (Default: 10 Kbytes; Range: 10 or 20 Kbytes)
- **Remote Log** – Enables remote storage of system logs on a Syslog server. (Default: Disabled)
- **Remote Log Server Address** – The address of the remote logging server. (Default: your.syslog.server)
- **Remote Log Server Port** – The remote port to which messages are to be sent to. (Default: 514; Range: 1~65535)
- **Log to Remote and Local** – Enables simultaneous logging to a remote Syslog server and local logging on the wireless/AP Router's RAM or Flash memory. (Default: Disabled)

Log Level	4 Warning	(default:4)
Total Log Size	10	Kbytes (default:10)
Remote Log	<input checked="" type="checkbox"/>	Enable
Remote Log Server Address	your.syslog.server	
Remote Log Server Port	514	(1..65535, default:514)
Log to Remote and Local	<input type="checkbox"/>	Enable

**Note:** Enabling Remote Logging disables local logging unless “Log to Remote and Local” is selected.

- **Submit** – Saves the current system log configuration.
- **Reset** – Restores the previous current system log configuration.

## Date and Time Settings

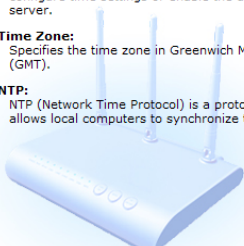
The Date/Time page allows you to manually configure time settings or enable the use of an NTP server.

Date/Time	
Date Time Set By	<input type="radio"/> Manual Time Setting <input checked="" type="radio"/> NTP Time Server
Time Zone	(GMT) GMT, Dublin, London
Daylight Saving	<input type="checkbox"/> Enable
NTP Update Interval	24 hours (1..1000, default:24)
NTP Server 1	pool.ntp.org
NTP Server 2	

**Date/Time:**  
The Date/Time page allows you to manually configure time settings or enable the use of an NTP server.

**Time Zone:**  
Specifies the time zone in Greenwich Mean Time (GMT).

**NTP:**  
NTP (Network Time Protocol) is a protocol that allows local computers to synchronize the clocks.



**Figure 5-38 Date and Time Settings - NTP**

- **Date Time Set By** – Allows you to manually configure time settings or select the use of an NTP server.
- **Time Zone** – Specifies the time zone in Greenwich Mean Time (GMT).

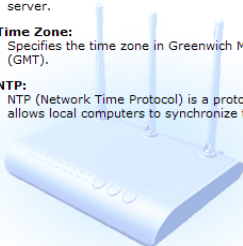
- **Daylight Saving** – Enables daylight savings for summertime. Daylight Saving Time begins for most of the United States at 2:00 a.m. on the first Sunday of April. Time reverts to standard time at 2:00 a.m. on the last Sunday of October. In the U.S., each time zone switches at a different time. In the European Union, Summer Time begins and ends at 1:00 a.m. GMT. It begins the last Sunday in March and ends the last Sunday in October. In the EU, all time zones change at the same moment. (Default: Disabled)
- **NTP Update Interval** – Specifies the number of hours before which the wireless AP/Router will send for a time update from NTP servers. (Default: 24 hours; Range 1~1000 hours)
- **NTP Server 1~2** – The IP address or URL of the NTP server to be used.
- **Submit** – Applies the Date/Time settings.
- **Reset** – Restores the previous Date/Time settings.

Date/Time	
Date Time Set By	<input checked="" type="radio"/> Manual Time Setting <input type="radio"/> NTP Time Server
Time Zone	(GMT) GMT, Dublin, London
Daylight Saving	<input type="checkbox"/> Enable
Date Value Setting	Year: 2005 Month: 01 Day: 01
Time Value Setting	Hour: 22 Minute: 25 Second: 38

**Date/Time:**  
The Date/Time page allows you to manually configure time settings or enable the use of an NTP server.

**Time Zone:**  
Specifies the time zone in Greenwich Mean Time (GMT).

**NTP:**  
NTP (Network Time Protocol) is a protocol that allows local computers to synchronize the clocks.



**Figure 5-39 Date and Time Settings - Manual**

- **Date Time Set By** – Allows you to manually configure time settings or select the use of an NTP server.
- **Time Zone** – Specifies the time zone in Greenwich Mean Time (GMT).
- **Daylight Saving** – Enables daylight savings for summertime. (Default: Disabled)
- **Date Value Setting** – Sets the date for the wireless AP/Router in year; month; day format.
- **Time Value Setting** – Sets the time for the wireless AP/Router in hour, minute; second format.
- **Submit** – Applies the Date/Time settings.
- **Reset** – Restores the previous Date/Time settings.



## Ping Test

The wireless AP/Router provides the function of “pinging” a specified IP address or URL to test for connectivity.


**PING Test**

PING Destination	<input style="width: 95%;" type="text" value="192.168.2.1"/>	<b>Ping Test:</b> The Wireless AP/Router provides the function of “pinging” a specified IP address or URL to test for connectivity.
------------------	--	--

```

PING 192.168.2.1 (192.168.2.1): 56 data bytes
84 bytes from 192.168.2.1: icmp_seq=0 ttl=64 time=0.8 ms
84 bytes from 192.168.2.1: icmp_seq=1 ttl=64 time=0.5 ms
84 bytes from 192.168.2.1: icmp_seq=2 ttl=64 time=0.5 ms

--- 192.168.2.1 ping statistics ---
3 packets transmitted, 3 packets received, 0% packet loss
round-trip min/avg/max = 0.5/0.6/0.8 ms
  
```




**Figure 5-40 Ping Test - success**

**PING Test**

PING Destination	<input style="width: 95%;" type="text" value="200.100.1.2"/>	<b>Ping Test:</b> The Wireless AP/Router provides the function of “pinging” a specified IP address or URL to test for connectivity.
------------------	--	--

```

PING 200.100.1.2 (200.100.1.2): 56 data bytes
ping: sendto: Network is unreachable
  
```



**Figure 5-41 Ping Test - failure**

- **PING Destination** – The destination IP address to test.
- **PING** – Sends the request.

## Management Settings

The wireless AP/Router's Management Settings menu provides the same configuration options in both Router and AP Mode. These settings allow you to change the operating mode, set the system time, configure a management access password, and upgrade the system software.

### Admin Accounts and Remote Administration

Management access to the wireless AP/Router is controlled through different levels of user name and password. You can also gain additional access security by using control filters such as ACLs and URL filters.

To protect access to the management interface, you need to configure a new Administrator's user name and password as soon as possible. If a new user name and password are not configured, then anyone having access to the wireless AP/Router may be able to compromise the unit's security by entering the default values. Once a new Administrator has been configured, you can delete the default "admin" user name from the system.

Management access to the wireless AP/Router through the WAN port is possible when remote administration is enabled and the connecting HTTP, port or IP address is configured.

Admin Accounts				
Access Level	Username	Password	Confirm Password	Action
admin ▾	<input type="text"/>	<input type="text"/>	<input type="text"/>	<input type="button" value="Change"/> <input type="button" value="Add"/>
admin	admin	*****		<input type="button" value="Edit"/> <input type="button" value="Delete"/>
user	user	****		<input type="button" value="Edit"/> <input type="button" value="Delete"/>
guest	guest	*****		<input type="button" value="Edit"/> <input type="button" value="Delete"/>

Remote Administration	
Remote Administration	<input type="checkbox"/> Enable

**Remote Administration:**  
Configures remote management access for the Wireless AP/Router.

Reboot	
Reboot	Restart the system <input type="button" value="Click to Reboot"/>

**Reboot:**  
Reboots the Wireless AP/Router.

**Figure 5-42 Administration Settings**

**Admin Accounts** — Configures access levels, usernames and passwords. (Maximum 32 entries are allowed.)

- **Access Level** – Configures the access privileges that the user has.

- **Admin:** Grants administrator level access, no restrictions.
- **User:** Grants user level access, some restrictions.
- **Guest:** Grants guest level access, configuration settings may not be changed.

Access Level	Username
admin	
admin	root
user	
guest	

**Note:** Pressing the Reset button on the back of the wireless AP/Router for more than 5 seconds resets the user names and passwords to the factory defaults.

- **Username** – The name of the user. The default names preset for access to the unit are "root" for admin level, "user" for user level and "guest" for guest level. (Length: 3-16 characters, case sensitive)
- **Password** – The password for management access. The default passwords preset for access to the unit are identical to their user names, "root" for admin level, "user" for user level and "guest" for guest level. (Length: 3-16 characters, case sensitive)
- **Confirm Password** – Prompts you to enter the password again for verification.
- **Action** – Specifies an action to take on the admin account.
  - **Change:** By selecting a user from the table its parameters display in an editable form. Click "Change" to save parameters once you have updated them.
  - **Add:** Adds a newly configured user to the list.
  - **Edit:** Click "Edit" to highlight a configured user for changing its parameters.
  - **Delete:** Deletes a user entry from the list.

**Remote Accounts** — Configures remote management access for the wireless AP/Router.

- **Remote administration** – Enables remote administration. (Default: Enabled)
- **HTTP port for remote** – Specifies the HTTP port for remote access. (Default: 8888; Range: 1~65535)
- **Remote administration only from IP** – Configures an IP address from which to manage the unit. Using an address of 0.0.0.0 enables remote management access from any IP address and is therefore recommended that the user change the default setting. (Default: 0.0.0.0)
- **Update** – Updates the remote administration information.

**Reboot** – Click the button to reboot the wireless AP/Router.

## Config Settings

The Config Setting page allows you to save the wireless AP/Router's current configuration or restore a previously saved configuration back to the device.

The screenshot shows a web interface for 'Config Settings'. It contains three main sections: 'Save', 'Restore', and 'Factory Default'. The 'Save' section has a 'Save' button. The 'Restore' section has a text input field, a 'Browse...' button, and a 'Restore' button. The 'Factory Default' section has a 'Set' button. Below these sections is a 'View Current Config' button. To the right, there is a blue wireless router with three antennas. A text box labeled 'Config:' explains that it saves the current configuration or restores a previously saved one.

**Figure 5-43 Config Settings**

- **Save** – Saves the current configuration locally.
- **Restore** – Restores a previously saved configuration from a specified file.
- **Factory Default** – Restores the factory defaults.
- **View Current Config** – Opens a display window that details parameters about the current configuration.

The screenshot shows the 'Current Config' page with a list of configuration parameters for a router. The parameters are organized into sections: [admin] and [wan].

```
# 802.11n Router configuration

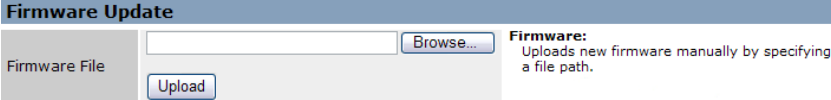
[admin]
admin_remote_enable=0
admin_remote_port=8888
admin_remote_ssl_port=8443
admin_remote_from_ip=0.0.0.0
admin1=_ac=admin;_username=root;_password=root
admin2=_ac=user;_username=user;_password=user
admin3=_ac=guest;_username=guest;_password=guest

[wan]
wan_bridge_enable=0
wan_manual_mac_enable=0
wan_manual_mac=00:00:00:00:00:00
wan_speed=0
wan_hostname=mr3305a
wan_domainname=accton.com.tw
wan_ip_assignment=1
wan_ip=0.0.0.0
```

**Figure 5-44 View Current Config Settings**

## Firmware Upgrade

You can update the wireless AP/Router firmware by using the Firmware Update facility.



**Firmware Update**

Firmware File   **Firmware:** Uploads new firmware manually by specifying a file path.

**Figure 5-45 Firmware Upgrade**

**Firmware Update** — Allows you to upload new firmware manually by specifying a file path. Make sure the firmware you want to use is on the local computer by clicking Browse to search for the firmware to be used for the update.

- **Browse** – Opens a directory on the local hard drive for specifying the path of the file to upload.
- **Upload** – Starts the upload procedure.

## Status Information

The Information pages display details on the current configuration and status of the wireless AP/Router, including associated wireless stations and event log messages.

**Note:** The Status Information pages will display different statistics depending on the mode selected, AP or Router. Please refer to “Installation” on page 2-1 for details.

## System Information

The System Information page displays basic system information as well as Management IP, WAN, LAN, WLAN and WDS settings. The displayed settings are for status information only and are not configurable on this page. This information is split into the four sections that follow.

Click "Information", followed by "System Information" and scroll to the relevant section.

System	
Device Mode	Router
Firmware Version	smcmr3306a-1.0.0.5.ba
Host Name	smc11n.smc.com
System Date	1970-01-01 10:34:25
Up Time	2:05

**Figure 5-46 System Information - Basic Information**

**System** — Displays the basic system information in both AP and Router modes:

- **Device Mode** – Displays the hardware setting determined by the switch on the base of the unit.

- **Model Name** – The device name and model number.
- **Firmware Version** – The version number of the current wireless AP/Router software.
- **Host Name** – The web address assigned as an alias for the wireless AP/Router, enabling the device to be uniquely identified on the network.
- **System Date** – The current date and time set for the wireless AP/Router, in the form year; month; day; hours; minutes; seconds.
- **Up Time** – Length of time the management agent has been up, specified in hours and minutes.

WAN		
Ethernet Speed		N/A
Ethernet MAC Address		00:12:CF:9B:57:BC
WAN Backup Status		None
Internet Connection Type		DHCP
DHCP Client		Inactive
DHCP Connection Established Time		N/A
DHCP Connection Expire Time		N/A
DHCP Server Address		N/A
IP Address		N/A
Subnet Mask		N/A
MTU		1500
Gateway Address		N/A
DNS 1 (Primary)		N/A
DNS 2 (Secondary)		N/A

**Figure 5-47 System Information - WAN Statistics (Router mode)**

**WAN** — Displays the basic WAN information:

- **Ethernet Speed** – The connection speed of the WAN port.
- **Ethernet MAC Address** – The physical layer address for the Ethernet WAN port.
- **IP Assignment** – Indicates if the IP address has been manually configured or assigned by DHCP.
- **DHCP Client** – Displays if the wireless AP/Router is acting as a DHCP client.
- **DHCP Connection Established Time** – If connected as a DHCP client it displays the duration the other device has been connected
- **DHCP Connection Expire Time** – If connected as a DHCP client it displays the length of time before which the connection will expire.
- **DHCP Server Address** – If connected to a DHCP server it displays the address of the server.
- **IP Address** – IP address of the WAN port for this device.
- **Subnet Mask** – The mask that identifies the host address bits used for routing to the WAN port.
- **MTU** – Indicates the Maximum Transmission Unit (MTU), the largest packet size allowed to be transmitted over the WAN port.

- **Gateway Address** – The default gateway is the IP address of the router for the wireless AP/Router, which is used if the requested destination address is not on the local subnet
- **DNS 1 (Primary) / DNS 2 (Secondary)** – The IP address of Domain Name Servers on the network. A DNS maps numerical IP addresses to domain names and can be used to identify network hosts by familiar names instead of the IP addresses.

LAN	
MAC Address	00:12:CF:9B:57:BD
IP Address	192.168.2.1
Subnet Mask	255.255.255.0

**Figure 5-48 System Information - LAN Statistics (Router mode)**

**LAN** — Displays the basic LAN information:

- **MAC Address** – The shared physical layer address for the wireless AP/Router's LAN ports.
- **IP Address** – The IP address configured on the wireless AP/Router.
- **Subnet Mask** – The mask that identifies the host address bits used for routing to the LAN port.
- **DHCP Server Function** – Indicates the DHCP server status.

Management IP related information	
MAC Address	00:12:CF:9B:57:C4
IP Address	192.168.2.1
Subnet Mask	255.255.255.0

**Figure 5-49 System Information - Management IP Statistics (AP mode)**

**Management IP related information** — Displays basic management IP information settings:

- **MAC Address** – The shared physical layer address for the wireless AP/Router's LAN and WAN ports.
- **IP Address** – The IP address configured on the wireless AP/Router.
- **Subnet Mask** – The mask that identifies the host address bits used for routing to the LAN port.
- **DHCP Server Function** – Indicates the DHCP server status.

WLAN	
WLAN Status	Enable
WLAN Signal Mode	802.11b/g/n Mixed
Frequency	1
WLAN1 SSID	SMC
WLAN1 MAC Address	00:12:CF:9B:57:BE

**Figure 5-50 System Information - WLAN Statistics**

**WLAN** — Displays the basic WLAN information:

- **WLAN Status** – Displays if the radio is enabled or disabled.

- **Country** – The country for which the wireless AP/Router has been set for use.
- **WLAN Mode** – Displays the radio mode being used.
- **Frequency** – The channel frequency being used by the radio.
- **WLAN1 SSID** – The service set identifier for WLAN1. (Default: SMC)
- **WLAN1 MAC Address** – The physical layer address for WLAN1.

WDS	
WDS Mode	Disabled
WDS Encryption Type	None
WDS MAC List	

**Figure 5-51 System Information - WDS Statistics**

**WDS** — Displays the basic WDS information.

**Note:** WDS information only applies to WLAN1.

- **WDS Mode** – The WDS mode in which WLAN1 is set to operate.
- **WDS Encryption Type** – The encryption type used by WLAN1.
- **WDS MAC List** – Displays any entries in the WDS MAC list. (Maximum: 4)

## Routing Table

This page displays the information necessary to forward a packet along the best path toward its destination. Each packet contains information about its origin and destination. When a packet is received, a network device examines the packet and matches it to the routing table entry providing the best match for its destination. The table then provides the device with instructions for sending the packet to the next hop on its route across the network.

**Note:** The Routing Table is only available when the wireless AP/Router is set to Router Mode.

Routing Table							
Destination	Gateway	Netmask	Flags	Metric	Ref	Use	Iface
192.168.2.0	0.0.0.0	255.255.255.0	U	0	0	0	br0

**Figure 5-52 Routing Table (Router Mode)**

- **Destination** – Displays all destination networks or specific hosts to which packets can be routed.
- **Gateway** – Displays the IP address of the router at the next hop to which matching frames are forwarded.
- **Netmask** – Displays the subnetwork associated with the destination.
- **Flags** – Possible flags include: U: route is up, H: target is a host, G: use gateway, C: cache entry, !: Reject route.



- **Metric** – A number used to indicate the cost of the route so that the best route, among potentially multiple routes to the same destination, can be selected.
- **Ref** – Number of references to this route.
- **Use** – Count of lookups for the route.
- **Iface** – Interface to which packets for this route will be sent.

## Packet Statistics

The device keeps statistics of the data traffic that it handles. You are able to view the amount of Received and Sent packets that passes through the device on both the WAN port and the LAN ports. The traffic counter will reset when the device is rebooted.

Packet Statistics						
Interface	Recv Bytes	Send Bytes	Recv Pkts	Send Pkts	Recv Errs	Send Errs
br0	1598961	9808757	15880	14844	0	0
eth1	1200974	10019871	10620	14658	0	0
lo	3146	3146	29	29	0	0
wlan	79681936	1415848	865138	45681	0	0

**Figure 5-53 Packet statistics**

- **Interface** – Displays the name of the interface the packet statistics relate to.
- **Recv Bytes** – The total number of bytes received on the interface.
- **Send Bytes** – The total number of bytes sent from the interface.
- **Recv Pkts** – The total number of packets received on the interface.
- **Send Pkts** – The total number of packets sent from the interface.
- **Recv Errs** – The total number of inbound packets that could not be delivered through the interface due to errors.
- **Send Errs** – The total number of outbound packets that could not be delivered through the interface due to errors.

## System Logs

The wireless AP/Router supports a logging process that controls error messages saved to memory or sent to a Syslog server. The logged messages serve as a valuable tool for isolating wireless AP/Router and network problems.

The Events Log page displays the latest messages logged in chronological order, from the newest to the oldest. Log messages saved in the wireless AP/Router's memory are erased when the device is rebooted.

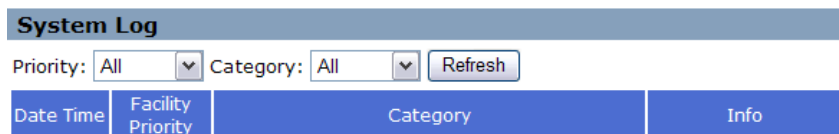
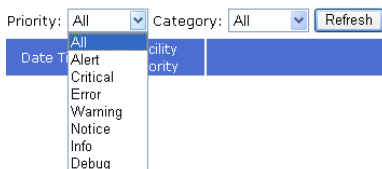


Figure 5-54 Syslog Settings

**Priority** — Select the priority level of syslog messages to be sent to the wireless AP/Router. (Default: All)

- **All** – Displays all logging messages.
- **Alert** – An error condition requiring immediate user intervention to prevent a problem.
- **Critical** – An error condition that may require user intervention.
- **Error** – An error condition that does not cause significant problems with normal operation.
- **Warning** – An error condition that does not cause system problems but may require attention.
- **Notice** – A system condition that does not cause system problems but should be noted.
- **Info** – Informational message only.
- **Debug** – Displays the lowest level of system log messages only. Debug messages carry information for debugging software.



**Category** — Select the category of syslog messages sent to the wireless AP/Router. (Default: All)

- **All** – Displays all categories of message.
- **Kernel** – Displays system log messages concerned with Linux Kernel base code problems only.
- **Process** – Displays system log messages concerned with all other process other than the Linux Kernel, including communication through the wireless AP/Router's ports.



- **Refresh** – Refreshes the System Log display to display the most recent messages received.
- **Date Time** – The date and time of receipt of the system log message.
- **Facility Priority** – The priority level of the system log message.
- **Category** – The category of system log message.
- **Info** – Additional informative content that may help isolate the cause of the problem that prompted the system log message.

## 3G Access History

Displays the budget control parameters and 3G access statistics.

- **When both time and data are under budget limit**

Budget Control Parameters					
Budget Control enable					Yes
Time Budget Control					Yes
Max Time Budget/(Percent of time pre-limit)			1hours/(44% --> 26.4 Minutes)		
Data Budget Control					Yes
Data Budget Traffic flow					Download
Max Data Budget/(Percent of data pre-limit)			3MB/(33% --> 0.99 MB)		
Drop Current Connection When Over Budget					Yes
Disallow New Connection When Over Budget					Yes
Billing Starting Date					1-th day per month
Data Budget Status					SAFE
Time Budget Status					SAFE
Email Alert					No

3G Access Statistics					
<input type="button" value="Update"/>		<input type="button" value="Forced Reset Budget"/>			
Login	Connection time(minutes)	Summated Elapsed time(minutes)	Total Transfer(MB)	RCV(MB)	TX(MB)
Jan 01 00:00:0	0.0	0.0	0.0	0.0	0.0

Figure 5-55 3G Access History (under budget limit)

- **When the time budget has reached its limit.**

Budget Control Parameters					
Budget Control enable					Yes
Time Budget Control					Yes
Max Time Budget/(Percent of time pre-limit)			1hours/(44% --> 26.4 Minutes)		
Data Budget Control					Yes
Data Budget Traffic flow					Download
Max Data Budget/(Percent of data pre-limit)			3MB/(33% --> 0.99 MB)		
Drop Current Connection When Over Budget					Yes
Disallow New Connection When Over Budget					Yes
Billing Starting Date					1-th day per month
Data Budget Status					SAFE
Time Budget Status					REACH Pre-Limit
Email Alert					No

3G Access Statistics					
<input type="button" value="Update"/>		<input type="button" value="Forced Reset Budget"/>			
Login	Connection time(minutes)	Summated Elapsed time(minutes)	Total Transfer(MB)	RCV(MB)	TX(MB)
Jan 12 13:22:43	0.400167	58.4687	0.039704	0.022597	0.017107

Figure 5-56 3G Access History (time limit reached)

- When the time limit is over the budget.

Budget Control Parameters	
Budget Control enable	Yes
Time Budget Control	Yes
Max Time Budget/(Percent of time pre-limit)	1hours/(44% --> 26.4 Minutes)
Data Budget Control	Yes
Data Budget Traffic flow	Download
Max Data Budget/(Percent of data pre-limit)	3MB/(33% --> 0.99 MB)
Drop Current Connection When Over Budget	Yes
Disallow New Connection When Over Budget	Yes
Billing Starting Date	1-th day per month
Data Budget Status	SAFE
Time Budget Status	OVER
Email Alert	No

### 3G Access Statistics



Login	Connection time(minutes)	Summated Elapsed time(minutes)	Total Transfer(MB)	RCV(MB)	TX(MB)
Jan 12 13:25:33	1.5945	59.663	0.05975	0.032621	0.027129

**Figure 5-57 3G Access History (over time budget limit)**

# Appendix A: Troubleshooting

---

Check the following items before you contact local Technical Support.

1. If wireless clients cannot access the network, check the following:
  - Be sure the access point and the wireless clients are configured with the same Service Set ID (SSID).
  - If authentication or encryption are enabled, ensure that the wireless clients are properly configured with the appropriate authentication or encryption keys.
2. If the wireless AP/Router cannot be configured using a web browser:
  - Be sure to have configured the access point with a valid IP address, subnet mask and default gateway.
  - If you are connecting to the wireless AP/Router through the wired Ethernet interface, check the network cabling between the management station and the wireless AP/Router. If you are connecting to wireless AP/Router from a wireless client, ensure that you have a valid connection to the wireless AP/Router.
3. If you forgot or lost the password:
  - Set the wireless AP/Router to its default configuration by pressing the reset button on the bottom panel for 5 seconds or more. Connect to the web management interface using the default IP address 192.168.2.1. Then set up a new user name and password to access the management interface.
4. If all other recovery measure fail, and the wireless AP/Router is still not functioning properly, take any of these steps:
  - Reset the wireless AP/Router's hardware using the web interface or through a power reset.
  - Reset the wireless AP/Router to its default configuration by pressing the reset button on the back panel for 5 seconds or more. Connect to the web management interface using the default IP address 192.168.2.1, then setup a user name and password.

## Diagnosing LED Indicators

Troubleshooting Chart	
Symptom	Action
POWER LED is Off	<ul style="list-style-type: none"><li>• The AC power adapter may be disconnected. Check connections between the wireless AP/Router, the power adapter, and the wall outlet.</li></ul>
WLAN LED is Off	<ul style="list-style-type: none"><li>• The wireless AP/Router's radio has been disabled through its web management interface. Access the management interface using a web browser to enable the radio.</li></ul>
LAN/WAN LED is Off (when port connected)	<ul style="list-style-type: none"><li>• Verify that the wireless AP/Router and attached device are powered on.</li><li>• Be sure the cable is plugged into both the wireless AP/Router and corresponding device.</li><li>• Verify that the proper cable type is used and its length does not exceed specified limits.</li><li>• Check the cable connections for possible defects. Replace the defective cable if necessary.</li></ul>

# Appendix B: Specifications

---

## Operating Frequency

802.11b/g/n:

2.412 ~ 2.462 GHz (USA, Canada Ch1- Ch11)

2.412 ~ 2.472 GHz (Europe Ch1- Ch13)

2.412 ~ 2.484 GHz (Japan Ch1- Ch14)

2.412 ~ 2.462 GHz (Taiwan Ch1-Ch11)

## Data Rate

802.11b: 1, 2, 5.5, 11 Mbps per channel

802.11g: 6, 9, 12, 18, 24, 36, 48, 54 Mbps per channel

Draft 802.11n (20MHz, 400ns GI): 7.2, 14.4, 21.7, 28.9, 43.3, 57.8, 65, 72.2, 14.4, 28.9, 43.3, 57.8, 86.7, 115.6, 130, 144.4 Mbps per channel

Draft 802.11n (40MHz, 400ns GI): 15, 30, 45, 60, 90, 120, 135, 150, 30, 60, 90, 120, 180, 240, 270, 300 Mbps per channel

## Operating Channels

802.11b/g/n compliant:

11 channels (US, Canada)

13 channels (ETSI)

14 channels (Japan)

11 channels (Taiwan)

## Modulation Type

CCK, DQPSK, DBPSK for DSSS

64QAM, 16QAM, QPSK, BPSK for OFDM

## Frequency Range

FCC/NCC: 2412MHz ~ 2462MHz

CE: 2412MHz ~ 2472MHz

## AC Power Adapter

Input: 110 or 240 VAC, 50-60 Hz

Output: 5V, 2A

## LED Indicators

POWER, LAN (Ethernet Link/Activity), WAN, (Ethernet Link/Activity), WLAN (Wireless Link/Activity), WPS (WPS in progress)

## Network Management

Web-browser

## Temperature

Operating: 0 to 45 °C (32 to 113 °F)

Storage: 0 to 45 °C (32 to 113 °F)

## **Humidity**

5% to 95% (non-condensing)

## **Compliances**

FCC Part 15B Class B

EN 55022

EN 55024

EN61000-3-2

EN61000-3-3

## **Radio Signal Certification**

FCC Part 15C 15.247, 15.207 (2.4 GHz)

EN 300 328

EN 301 489-1

EN 301 489-17

## **Standards**

IEEE 802.11b/g

IEEE 802.11n draft v2.0

## **Physical Size**

184 x 130 x 34.6 mm (7.24 x 5.11 x 1.36 in)

## **Weight**

255 g (9.0 oz)



# Appendix C: License Information

---

This product includes copyrighted third-party software subject to the terms of the GNU General Public License (GPL), GNU Lesser General Public License (LGPL), or other related free software licenses. The GPL code used in this product is distributed WITHOUT ANY WARRANTY and is subject to the copyrights of one or more authors. For details, refer to the section "The GNU General Public License" below, or refer to the applicable license as included in the source-code archive.

## The GNU General Public License

GNU GENERAL PUBLIC LICENSE

Version 2, June 1991

Copyright (C) 1989, 1991 Free Software Foundation, Inc.  
59 Temple Place, Suite 330, Boston, MA 02111-1307 USA

Everyone is permitted to copy and distribute verbatim copies of this license document, but changing it is not allowed.

### Preamble

The licenses for most software are designed to take away your freedom to share and change it. By contrast, the GNU General Public License is intended to guarantee your freedom to share and change free software--to make sure the software is free for all its users. This General Public License applies to most of the Free Software Foundation's software and to any other program whose authors commit to using it. (Some other Free Software Foundation software is covered by the GNU Library General Public License instead.) You can apply it to your programs, too.

When we speak of free software, we are referring to freedom, not price. Our General Public Licenses are designed to make sure that you have the freedom to distribute copies of free software (and charge for this service if you wish), that you receive source code or can get it if you want it, that you can change the software or use pieces of it in new free programs; and that you know you can do these things.

To protect your rights, we need to make restrictions that forbid anyone to deny you these rights or to ask you to surrender the rights. These restrictions translate to certain responsibilities for you if you distribute copies of the software, or if you modify it.

For example, if you distribute copies of such a program, whether gratis or for a fee, you must give the recipients all the rights that you have. You must make sure that they, too, receive or can get the source code. And you must show them these terms so they know their rights.



We protect your rights with two steps: (1) copyright the software, and (2) offer you this license which gives you legal permission to copy, distribute and/or modify the software.

Also, for each author's protection and ours, we want to make certain that everyone understands that there is no warranty for this free software. If the software is modified by someone else and passed on, we want its recipients to know that what they have is not the original, so that any problems introduced by others will not reflect on the original authors' reputations.

Finally, any free program is threatened constantly by software patents. We wish to avoid the danger that redistributors of a free program will individually obtain patent licenses, in effect making the program proprietary. To prevent this, we have made it clear that any patent must be licensed for everyone's free use or not licensed at all.

The precise terms and conditions for copying, distribution and modification follow.

## **GNU GENERAL PUBLIC LICENSE TERMS AND CONDITIONS FOR COPYING, DISTRIBUTION AND MODIFICATION**

1. This License applies to any program or other work which contains a notice placed by the copyright holder saying it may be distributed under the terms of this General Public License. The "Program", below, refers to any such program or work, and a "work based on the Program" means either the Program or any derivative work under copyright law: that is to say, a work containing the Program or a portion of it, either verbatim or with modifications and/or translated into another language. (Hereinafter, translation is included without limitation in the term "modification".) Each licensee is addressed as "you".

Activities other than copying, distribution and modification are not covered by this License; they are outside its scope. The act of running the Program is not restricted, and the output from the Program is covered only if its contents constitute a work based on the Program (independent of having been made by running the Program). Whether that is true depends on what the Program does.

2. You may copy and distribute verbatim copies of the Program's source code as you receive it, in any medium, provided that you conspicuously and appropriately publish on each copy an appropriate copyright notice and disclaimer of warranty; keep intact all the notices that refer to this License and to the absence of any warranty; and give any other recipients of the Program a copy of this License along with the Program.

You may charge a fee for the physical act of transferring a copy, and you may at your option offer warranty protection in exchange for a fee.

3. You may modify your copy or copies of the Program or any portion of it, thus forming a work based on the Program, and copy and distribute such modifications or work under the terms of Section 1 above, provided that you also meet all of these conditions:

- a). You must cause the modified files to carry prominent notices stating that you changed the files and the date of any change.
- b). You must cause any work that you distribute or publish, that in whole or in part contains or is derived from the Program or any part thereof, to be licensed as a whole at no charge to all third parties under the terms of this License.
- c). If the modified program normally reads commands interactively when run, you must cause it, when started running for such interactive use in the most ordinary way, to print or display an announcement including an appropriate copyright notice and a notice that there is no warranty (or else, saying that you provide a warranty) and that users may redistribute the program under these conditions, and telling the user how to view a copy of this License. (Exception: if the Program itself is interactive but does not normally print such an announcement, your work based on the Program is not required to print an announcement.)

These requirements apply to the modified work as a whole. If identifiable sections of that work are not derived from the Program, and can be reasonably considered independent and separate works in themselves, then this License, and its terms, do not apply to those sections when you distribute them as separate works. But when you distribute the same sections as part of a whole which is a work based on the Program, the distribution of the whole must be on the terms of this License, whose permissions for other licensees extend to the entire whole, and thus to each and every part regardless of who wrote it.

Thus, it is not the intent of this section to claim rights or contest your rights to work written entirely by you; rather, the intent is to exercise the right to control the distribution of derivative or collective works based on the Program.

In addition, mere aggregation of another work not based on the Program with the Program (or with a work based on the Program) on a volume of a storage or distribution medium does not bring the other work under the scope of this License.

4. You may copy and distribute the Program (or a work based on it, under Section 2) in object code or executable form under the terms of Sections 1 and 2 above provided that you also do one of the following:
  - a). Accompany it with the complete corresponding machine-readable source code, which must be distributed under the terms of Sections 1 and 2 above on a medium customarily used for software interchange; or,
  - b). Accompany it with a written offer, valid for at least three years, to give any third party, for a charge no more than your cost of physically performing source distribution, a complete machine-readable copy of the corresponding source code, to be distributed under the terms of Sections 1 and 2 above on a medium customarily used for software interchange; or,



- c). Accompany it with the information you received as to the offer to distribute corresponding source code. (This alternative is allowed only for noncommercial distribution and only if you received the program in object code or executable form with such an offer, in accord with Subsection b above.)

The source code for a work means the preferred form of the work for making modifications to it. For an executable work, complete source code means all the source code for all modules it contains, plus any associated interface definition files, plus the scripts used to control compilation and installation of the executable. However, as a special exception, the source code distributed need not include anything that is normally distributed (in either source or binary form) with the major components (compiler, kernel, and so on) of the operating system on which the executable runs, unless that component itself accompanies the executable.

If distribution of executable or object code is made by offering access to copy from a designated place, then offering equivalent access to copy the source code from the same place counts as distribution of the source code, even though third parties are not compelled to copy the source along with the object code.

5. You may not copy, modify, sublicense, or distribute the Program except as expressly provided under this License. Any attempt otherwise to copy, modify, sublicense or distribute the Program is void, and will automatically terminate your rights under this License. However, parties who have received copies, or rights, from you under this License will not have their licenses terminated so long as such parties remain in full compliance.
6. You are not required to accept this License, since you have not signed it. However, nothing else grants you permission to modify or distribute the Program or its derivative works. These actions are prohibited by law if you do not accept this License. Therefore, by modifying or distributing the Program (or any work based on the Program), you indicate your acceptance of this License to do so, and all its terms and conditions for copying, distributing or modifying the Program or works based on it.
7. Each time you redistribute the Program (or any work based on the Program), the recipient automatically receives a license from the original licensor to copy, distribute or modify the Program subject to these terms and conditions. You may not impose any further restrictions on the recipients' exercise of the rights granted herein. You are not responsible for enforcing compliance by third parties to this License.
8. If, as a consequence of a court judgment or allegation of patent infringement or for any other reason (not limited to patent issues), conditions are imposed on you (whether by court order, agreement or otherwise) that contradict the conditions of this License, they do not excuse you from the conditions of this License. If you cannot distribute so as to satisfy simultaneously your obligations under this License and any other pertinent obligations, then as a consequence

you may not distribute the Program at all. For example, if a patent license would not permit royalty-free redistribution of the Program by all those who receive copies directly or indirectly through you, then the only way you could satisfy both it and this License would be to refrain entirely from distribution of the Program.

If any portion of this section is held invalid or unenforceable under any particular circumstance, the balance of the section is intended to apply and the section as a whole is intended to apply in other circumstances.

It is not the purpose of this section to induce you to infringe any patents or other property right claims or to contest validity of any such claims; this section has the sole purpose of protecting the integrity of the free software distribution system, which is implemented by public license practices. Many people have made generous contributions to the wide range of software distributed through that system in reliance on consistent application of that system; it is up to the author/donor to decide if he or she is willing to distribute software through any other system and a licensee cannot impose that choice.

This section is intended to make thoroughly clear what is believed to be a consequence of the rest of this License.

9. If the distribution and/or use of the Program is restricted in certain countries either by patents or by copyrighted interfaces, the original copyright holder who places the Program under this License may add an explicit geographical distribution limitation excluding those countries, so that distribution is permitted only in or among countries not thus excluded. In such case, this License incorporates the limitation as if written in the body of this License.
10. The Free Software Foundation may publish revised and/or new versions of the General Public License from time to time. Such new versions will be similar in spirit to the present version, but may differ in detail to address new problems or concerns.

Each version is given a distinguishing version number. If the Program specifies a version number of this License which applies to it and "any later version", you have the option of following the terms and conditions either of that version or of any later version published by the Free Software Foundation. If the Program does not specify a version number of this License, you may choose any version ever published by the Free Software Foundation.

11. If you wish to incorporate parts of the Program into other free programs whose distribution conditions are different, write to the author to ask for permission. For software which is copyrighted by the Free Software Foundation, write to the Free Software Foundation; we sometimes make exceptions for this. Our decision will be guided by the two goals of preserving the free status of all derivatives of our free software and of promoting the sharing and reuse of software generally.



### NO WARRANTY

1. BECAUSE THE PROGRAM IS LICENSED FREE OF CHARGE, THERE IS NO WARRANTY FOR THE PROGRAM, TO THE EXTENT PERMITTED BY APPLICABLE LAW. EXCEPT WHEN OTHERWISE STATED IN WRITING THE COPYRIGHT HOLDERS AND/OR OTHER PARTIES PROVIDE THE PROGRAM "AS IS" WITHOUT WARRANTY OF ANY KIND, EITHER EXPRESSED OR IMPLIED, INCLUDING, BUT NOT LIMITED TO, THE IMPLIED WARRANTIES OF MERCHANTABILITY AND FITNESS FOR A PARTICULAR PURPOSE. THE ENTIRE RISK AS TO THE QUALITY AND PERFORMANCE OF THE PROGRAM IS WITH YOU. SHOULD THE PROGRAM PROVE DEFECTIVE, YOU ASSUME THE COST OF ALL NECESSARY SERVICING, REPAIR OR CORRECTION.
2. IN NO EVENT UNLESS REQUIRED BY APPLICABLE LAW OR AGREED TO IN WRITING WILL ANY COPYRIGHT HOLDER, OR ANY OTHER PARTY WHO MAY MODIFY AND/OR REDISTRIBUTE THE PROGRAM AS PERMITTED ABOVE, BE LIABLE TO YOU FOR DAMAGES, INCLUDING ANY GENERAL, SPECIAL, INCIDENTAL OR CONSEQUENTIAL DAMAGES ARISING OUT OF THE USE OR INABILITY TO USE THE PROGRAM (INCLUDING BUT NOT LIMITED TO LOSS OF DATA OR DATA BEING RENDERED INACCURATE OR LOSSES SUSTAINED BY YOU OR THIRD PARTIES OR A FAILURE OF THE PROGRAM TO OPERATE WITH ANY OTHER PROGRAMS), EVEN IF SUCH HOLDER OR OTHER PARTY HAS BEEN ADVISED OF THE POSSIBILITY OF SUCH DAMAGES.

### END OF TERMS AND CONDITIONS

# Glossary

---

## **10BASE-T**

IEEE 802.3-2005 specification for 10 Mbps Ethernet over two pairs of Category 3 or better UTP cable.

## **100BASE-TX**

IEEE 802.3-2005 specification for 100 Mbps Fast Ethernet over two pairs of Category 5 or better UTP cable.

## **Access Point**

An internetworking device that seamlessly connects wired and wireless networks. Access points attached to a wired network, support the creation of multiple radio cells that enable roaming throughout a facility.

## **Advanced Encryption Standard (AES)**

An encryption algorithm that implements symmetric key cryptography. AES provides very strong encryption using a completely different ciphering algorithm to TKIP and WEP.

## **Authentication**

The process to verify the identity of a client requesting network access. IEEE 802.11 specifies two forms of authentication: open system and shared key.

## **Backbone**

The core infrastructure of a network. The portion of the network that transports information from one central location to another central location where it is unloaded onto a local system.

## **Beacon**

A signal periodically transmitted from the access point that is used to identify the service set, and to maintain contact with wireless clients.

## **Broadcast Key**

Broadcast keys are sent to stations using dynamic keying. Dynamic broadcast key rotation is often used to allow the access point to generate a random group key and periodically update all key-management capable wireless clients.

## **Dynamic Host Configuration Protocol (DHCP)**

Provides a framework for passing configuration information to hosts on a TCP/IP network. DHCP is based on the Bootstrap Protocol (BOOTP), adding the capability of automatic allocation of reusable network addresses and additional configuration options.

## **Encryption**

Data passing between the access point and clients can use encryption to protect from interception and eavesdropping.

## **Ethernet**

A popular local area data communications network, which accepts transmission from computers and terminals.

## **File Transfer Protocol (FTP)**

A TCP/IP protocol used for file transfer.

## **Hypertext Transfer Protocol (HTTP)**

HTTP is a standard used to transmit and receive all data over the World Wide Web.

## **IEEE 802.11b**

A wireless standard that supports wireless communications in the 2.4 GHz band using Direct Sequence Spread Spectrum (DSSS). The standard provides for data rates of 1, 2, 5.5, and 11 Mbps.

## **IEEE 802.11g**

A wireless standard that supports wireless communications in the 2.4 GHz band using Orthogonal Frequency Division Multiplexing (OFDM). The standard provides for data rates of 6, 9, 11, 12, 18, 24, 36, 48, 54 Mbps. IEEE 802.11g is also backward compatible with IEEE 802.11b.

## **IEEE 802.11n**

A wireless standard that supports wireless communications in the 2.4 GHz band using Orthogonal Frequency Division Multiplexing (OFDM). The standard provides for data rates of 27, 54, 81, 108, 162, 216, 243, 270, 300 Mbps. IEEE 802.11n is also backward compatible with IEEE 802.11b/g.

## **Infrastructure**

An integrated wireless and wired LAN is called an infrastructure configuration.

## **Local Area Network (LAN)**

A group of interconnected computer and support devices.

## **MAC Address**

The physical layer address used to uniquely identify network nodes.

## **Network Time Protocol (NTP)**

NTP provides the mechanisms to synchronize time across the network. The time servers operate in a hierarchical-master-slave configuration in order to synchronize local clocks within the subnet and to national time standards via wire or radio.



## **Open System**

A security option which broadcasts a beacon signal including the access point's configured SSID. Wireless clients can read the SSID from the beacon, and automatically reset their SSID to allow immediate connection to the nearest access point.

## **Orthogonal Frequency Division Multiplexing (OFDM)**

OFDM allows multiple users to transmit in an allocated band by dividing the bandwidth into many narrow bandwidth carriers.

## **Repeater and Bridge**

Repeater and bridge can provide an extended link to a remote access point from the wired LAN. Access Point working in this mode could connect to another AP in Access Point mode or Repeater and Bridge mode. Whenever there are two APs having wireless link together (one in Access Point or Repeater and Bridge mode, another using Repeater and Bridge mode), and also have wired link separately, these two APs are also working as "bridging" for the two wired links.

## **Service Set Identifier (SSID)**

An identifier that is attached to packets sent over the wireless LAN and functions as a password for joining a particular radio cell; i.e., Basic Service Set (BSS).

## **Session Key**

Session keys are unique to each client, and are used to authenticate a client connection, and correlate traffic passing between a specific client and the access point.

## **Shared Key**

A shared key can be used to authenticate each client attached to a wireless network. Shared Key authentication must be used along with the 802.11 Wireless Equivalent Privacy algorithm.

## **Simple Network Time Protocol (SNTP)**

SNTP allows a device to set its internal clock based on periodic updates from a Network Time Protocol (NTP) server. Updates can be requested from a specific NTP server, or can be received via broadcasts sent by NTP servers.

## **Temporal Key Integrity Protocol (TKIP)**

A data encryption method designed as a replacement for WEP. TKIP avoids the problems of WEP static keys by dynamically changing data encryption keys.

## **Trivial File Transfer Protocol (TFTP)**

A TCP/IP protocol commonly used for software downloads.

### **Virtual Access Point (VAP)**

Virtual AP technology multiplies the number of Access Points present within the RF footprint of a single physical access device. With Virtual AP technology, WLAN users within the device's footprint can associate with what appears to be different access points and their associated network services. All the services are delivered using a single radio channel, enabling Virtual AP technology to optimize the use of limited WLAN radio spectrum.

### **Wi-Fi Protected Access**

WPA employs 802.1X as its basic framework for user authentication and dynamic key management to provide an enhanced security solution for 802.11 wireless networks.

### **Wired Equivalent Privacy (WEP)**

WEP is based on the use of security keys and the popular RC4 encryption algorithm. Wireless devices without a valid WEP key will be excluded from network traffic.

### **WPA Pre-shared Key (WPA-PSK)**

WPA-PSK can be used for small office networks with a limited number of users that may not need a high level of security. WPA-PSK provides a simple security implementation that uses just a pre-shared password for network access.

# Index

---

## A

AC power adapter 1-4  
ACL configuration 5-37  
administrator accounts 5-61  
administrator password 5-61  
administrator username 5-61  
Advanced Setting menu 5-25  
AES 5-30, 5-35, 5-36  
AP mode 2-1, 2-2  
authentication mode 4-16, 5-29, 5-34, 5-35

---

## B

bridge 3-4, 5-34

---

## C

channels, maximum B-1  
clients, maximum B-1  
contents, package 1-1

---

## D

DDNS 5-55  
DHCP client list 5-53  
DHCP server 5-8, 5-52  
DHCP server address 5-64  
DMZ 5-45

---

## E

Ethernet ports 1-4

---

## F

firmware version 5-64

---

## G

gateway address 4-5, 4-12, 4-13, 5-8, 5-16, 5-41, 5-65, 5-66

---

## H

host name 5-6, 5-64

---

## I

IEEE 802.11n 1-1  
IEEE 802.1X 5-27, 5-32  
installation  
    mounting 1-5  
IP address 4-5, 5-5, 5-19, 5-64

---

## L

LAN packet filter 5-49  
LAN setting 5-19  
LED indicators 1-3

---

## M

MAC packet filter 5-49  
MDI/MDI-X, automatic 1-4  
mounting the access point 1-5

---

## N

NAT setting 5-45  
NTP server 5-57

---

## P

package checklist 1-1  
packet statistics 5-67  
port forwarding 5-47  
port trigger 5-46  
Power LED 1-3, A-2  
power socket 1-4  
PPoE 4-11, 4-12, 5-9, 5-11, 5-14, 5-15  
primary DNS server 4-4, 5-6

---

## R

RADIUS 5-32  
reboot 5-61

repeater 5-34  
Reset button 1-4

---

## **S**

secondary DNS server 4-4, 5-7  
software  
    displaying version 5-56  
static IP 4-5, 5-7  
subnet mask 4-5, 5-5, 5-19, 5-64  
system Information 5-63  
system log 5-68

---

## **T**

time zone 5-57  
TKIP 5-30, 5-34, 5-36  
troubleshooting A-1, C-1

---

## **U**

UPnP 5-54

URL filter 5-50  
URLs 5-50

---

## **V**

virtual server mapping 5-46

---

## **W**

WAN packet filter 5-48  
WAN setting 5-5  
WDS MAC list 5-35  
WDS settings 5-33  
WEP 5-27, 5-29, 5-30, 5-34, 5-36  
WLAN setting 4-15, 5-23  
WPA/WPA2 5-27, 5-29  
WPS 5-39  
WPS button 1-5  
WPS, PBC 5-40  
WPS, PIN 5-40



## TECHNICAL SUPPORT

From U.S.A. and Canada (24 hours a day, 7 days a week)  
Phn: (800) SMC-4-YOU / (949) 679-8000  
Fax: (949) 679-1481

**English:** Technical Support information available at [www.smc.com](http://www.smc.com)

**English (For Asia Pacific):** Technical Support information available at  
[www.smc-asia.com](http://www.smc-asia.com)

**Deutsch:** Technischer Support und weitere Information unter [www.smc.com](http://www.smc.com)

**Español:** En [www.smc.com](http://www.smc.com) Ud. podrá encontrar la información relativa a servicios de soporte técnico

**Français:** Informations Support Technique sur [www.smc.com](http://www.smc.com)

**Português:** Informações sobre Suporte Técnico em [www.smc.com](http://www.smc.com)

**Italiano:** Le informazioni di supporto tecnico sono disponibili su [www.smc.com](http://www.smc.com)

**Svenska:** Information om Teknisk Support finns tillgängligt på [www.smc.com](http://www.smc.com)

**Nederlands:** Technische ondersteuningsinformatie beschikbaar op [www.smc.com](http://www.smc.com)

**Polski:** Informacje o wsparciu technicznym są dostępne na [www.smc.com](http://www.smc.com)

**Čeština:** Technická podpora je dostupná na [www.smc.com](http://www.smc.com)

**Magyar:** Műszaki támogat információ elérhető -on [www.smc.com](http://www.smc.com)

简体中文: 技术支持讯息可通过[www.smc-prc.com](http://www.smc-prc.com)查询

繁體中文: 產品技術支援與服務請上 [www.smcnetworks.com.tw](http://www.smcnetworks.com.tw)

ไทย: สามารถหาข้อมูลทางด้านเทคนิคได้ที่ [www.smc-asia.com](http://www.smc-asia.com)

한국어: 기술지원관련 정보는 [www.smc-asia.com](http://www.smc-asia.com)을 참고하시기 바랍니다

## INTERNET

E-mail address: [www.smc.com](http://www.smc.com) → Support → By email

Driver updates: [www.smc.com](http://www.smc.com) → Support → Downloads

World Wide Web: <http://www.smc.com/>

