



# USER GUIDE



EZ Connect™ N  
150 Mbps N Wireless USB Adapter

**SMCWUSBS-N3**



# 150 Mbps N Wireless USB Adapter User Guide

---

**SMIC<sup>®</sup>**

**Networks**

20 Mason  
Irvine, CA 92618  
Phone: (949) 679-8000

September 2009  
14910000053W  
E092009-AP-R01

Information furnished by SMC Networks, Inc. (SMC) is believed to be accurate and reliable. However, no responsibility is assumed by SMC for its use, nor for any infringements of patents or other rights of third parties which may result from its use. No license is granted by implication or otherwise under any patent or patent rights of SMC. SMC reserves the right to change specifications at any time without notice.

Copyright © 2009 by

SMC Networks, Inc.

20 Mason

Irvine, CA 92618

All rights reserved

Trademarks:

SMC is a registered trademark; and EZ Switch, TigerStack, TigerSwitch, and TigerAccess are trademarks of SMC Networks, Inc. Other product and company names are trademarks or registered trademarks of their respective holders.

# WARRANTY AND PRODUCT REGISTRATION

To register SMC products and to review the detailed warranty statement, please refer to the Support Section of the SMC Website at <http://www.smc.com>.

# COMPLIANCES

## FEDERAL COMMUNICATION COMMISSION INTERFERENCE STATEMENT

This equipment has been tested and found to comply with the limits for a Class B digital device, pursuant to Part 15 of the FCC Rules. These limits are designed to provide reasonable protection against harmful interference in a residential installation. This equipment generates, uses and can radiate radio frequency energy and, if not installed and used in accordance with the instructions, may cause harmful interference to radio communications. However, there is no guarantee that interference will not occur in a particular installation. If this equipment does cause harmful interference to radio or television reception, which can be determined by turning the equipment off and on, the user is encouraged to try to correct the interference by one of the following measures:

- ◆ Reorient or relocate the receiving antenna
- ◆ Increase the separation between the equipment and receiver
- ◆ Connect the equipment into an outlet on a circuit different from that to which the receiver is connected
- ◆ Consult the dealer or an experienced radio/TV technician for help

This device complies with Part 15 of the FCC Rules. Operation is subject to the following two conditions: (1) This device may not cause harmful interference, and (2) this device must accept any interference received, including interference that may cause undesired operation.

**FCC Caution:** Any changes or modifications not expressly approved by the party responsible for compliance could void the user's authority to operate this equipment.

## IMPORTANT NOTE:

### FCC RADIATION EXPOSURE STATEMENT

This equipment complies with FCC radiation exposure limits set forth for an uncontrolled environment. End users must follow the specific operating instructions for satisfying RF exposure compliance. To maintain compliance with FCC RF exposure requirements, please follow operation instruction as documented in this manual.

This transmitter must not be co-located or operating in conjunction with any other antenna or transmitter.

IEEE 802.11b, 802.11g or 802.11n operation of this product in the U.S.A. is firmware-limited to channels 1 through 11.

## TAIWAN NCC 低功率輻射規定

根據國家通信傳播委員會低功率電波輻射性電機管理辦法之規定，應包含下列警語：

第十二條 經型式認證合格之低功率射頻電機，非經許可，公司、商號或使用者均不得擅自變更頻率、加大功率或變更原設計之特性及功能。

第十四條 低功率射頻電機之使用不得影響飛航安全及干擾合法通信；經發現有干擾現象時，應立即停用，並改善至無干擾時方得繼續使用。前項合法通信，指依電信法規定作業之無線電通信。低功率射頻電機須忍受合法通信或工業、科學及醫療用電波輻射性電機設備之干擾。

## EC CONFORMANCE DECLARATION

Marking by the above symbol indicates compliance with the Essential Requirements of the R&TTE Directive of the European Union (1999/5/EC). This equipment meets the following conformance standards:

- ◆ EN 60950-1 (IEC 60950-1) - Product Safety
- ◆ EN 300 328 - Technical requirements for 2.4 GHz radio equipment
- ◆ EN 301 489-1, EN 301 489-17 - EMC requirements for radio equipment
- ◆ EN 62311 (2008) -Assessment of electronic and electrical equipment related to human exposure restrictions for electromagnetic fields (0 Hz – 300 GHz)

This device is intended for use in the following European Community and EFTA countries:

- |            |             |              |               |                  |
|------------|-------------|--------------|---------------|------------------|
| ◆ Austria  | ◆ Belgium   | ◆ Bulgaria   | ◆ Cyprus      | ◆ Czech Republic |
| ◆ Denmark  | ◆ Estonia   | ◆ Finland    | ◆ France      | ◆ Germany        |
| ◆ Greece   | ◆ Hungary   | ◆ Iceland    | ◆ Ireland     | ◆ Italy          |
| ◆ Latvia   | ◆ Lithuania | ◆ Luxembourg | ◆ Malta       | ◆ Netherlands    |
| ◆ Norway   | ◆ Poland    | ◆ Portugal   | ◆ Romania     | ◆ Slovakia       |
| ◆ Slovenia | ◆ Spain     | ◆ Sweden     | ◆ Switzerland | ◆ United Kingdom |

This device is a 2.4 GHz wideband transmission system (transceiver), intended for use in all EU member states and EFTA countries, except in France and Italy where restrictive use applies.

- ◆ In Italy the end-user should apply for a license at the national spectrum authorities in order to obtain authorization to use the device for setting up outdoor radio links and/or for supplying public access to telecommunications and/or network services.
- ◆ This device may not be used for setting up outdoor radio links in France and in some areas the RF output power may be limited to 10 mW EIRP in the frequency range of 2454 – 2483.5 MHz. For detailed information the end-user should contact the national spectrum authority in France.

Czech Česky	SMC Networks tímto prohlašuje, že tento Radio LAN device je ve shodě se základními požadavky a dalšími příslušnými ustanoveními směrnice 1999/5/ES.
Danish Dansk	Undertegnede SMC Networks erklærer herved, at følgende udstyr Radio LAN device overholder de væsentlige krav og øvrige relevante krav i direktiv 1999/5/EF.
German Deutsch	Hiermit erklärt SMC Networks, dass sich dieses Wireless LAN Gerät in Übereinstimmung mit den grundlegenden Anforderungen und den anderen relevanten Vorschriften der Richtlinie 1999/5/EG befindet. Die offizielle EC-Declaration of Conformity finden Sie im Internet unter <a href="http://www.smc.com">http://www.smc.com</a> unter der entsprechenden Produktkategorie.
Estonian Eesti	Käesolevaga kinnitab SMC Networks seadme Radio LAN device vastavust direktiivi 1999/5/EU põhinõuetele ja nimetatud direktiivist tulenevatele teistele asjakohastele sätetele.
English	Hereby, SMC Networks, declares that this Radio LAN device is in compliance with the essential requirements and other relevant provisions of Directive 1999/5/EC. The official EC-Declaration of Conformity can be found under the corresponding product section on the web <a href="http://www.smc.com">http://www.smc.com</a> .
Spanish Español	Por medio de la presente SMC Networks declara que el Radio LAN device cumple con los requisitos esenciales y cualesquiera otras disposiciones aplicables o exigibles de la Directiva 1999/5/CE. The official EC-Declaration of Conformity can be found under the corresponding product section on the web <a href="http://www.smc.com">http://www.smc.com</a> .
Greek Ελληνική	ΜΕ ΤΗΝ ΠΑΡΟΥΣΑ SMC Networks ΔΗΛΩΝΕΙ ΟΤΙ radio LAN device ΣΥΜΜΟΡΦΩΝΕΤΑΙ ΠΡΟΣ ΤΙΣ ΟΥΣΙΩΔΕΙΣ ΑΠΑΙΤΗΣΕΙΣ ΚΑΙ ΤΙΣ ΛΟΙΠΕΣ ΣΧΕΤΙΚΕΣ ΔΙΑΤΑΞΕΙΣ ΤΗΣ ΟΔΗΓΙΑΣ 1999/5/ΕΚ.
French Français	Par la présente SMC Networks déclare que l'appareil Radio LAN device est conforme aux exigences essentielles et aux autres dispositions pertinentes de la directive 1999/5/CE. La déclaration de conformité officielle peut être trouvée sur notre site internet <a href="http://www.smc.com">http://www.smc.com</a> dans la rubrique Produits.
Italian Italiano	Con la presente SMC Networks dichiara che questo Radio LAN device è conforme ai requisiti essenziali ed alle altre disposizioni pertinenti stabilite dalla direttiva 1999/5/CE.
Latvian Latviski	Ar šo SMC Networks deklarē, ka Radio LAN device atbilst Direktīvas 1999/5/EK būtiskajām prasībām un citiem ar to saistītajiem noteikumiem.
Lithuanian Lietuvių	Šiuo SMC Networks deklaruojama, kad šis Radio LAN device atitinka esminius reikalavimus ir kitas 1999/5/EB Direktyvos nuostatas.
Dutch Nederlands	Hierbij verklaart SMC Networks dat het toestel Radio LAN device in overeenstemming is met de essentiële eisen en de andere relevante bepalingen van richtlijn 1999/5/EG
Maltese Malt	Hawnhekk, SMC Networks, jiddikjara li dan Radio LAN device jikkonforma mal-ħtiġijiet essenzjali u ma provvedimenti oħrajn relevanti li hemm fid-Dirrettiva 1999/5/EC.
Hungarian Magyar	Alulírott, SMC Networks nyilatkozom, hogy a Radio LAN device megfelel a vonatkozó alapvető követelményeknek és az 1999/5/EC irányelv egyéb előírásainak.
Polish Polski	Niniejszym SMC Networks oświadcza, że Radio LAN device jest zgodny z zasadniczymi wymogami oraz pozostałymi stosownymi postanowieniami Dyrektywy 1999/5/EC.
Portuguese Português	SMC Networks declara que este Radio LAN device está conforme com os requisitos essenciais e outras disposições da Directiva 1999/5/CE.
Slovak Slovensky	SMC Networkstýmto vyhlasuje, že Radio LAN device spĺňa základné požiadavky a všetky príslušné ustanovenia Smernice 1999/5/ES.
Finnish suomi	Valmistaja SMC Networks vakuuttaa täten että Radio LAN device tyyppinen laite on direktiivin 1999/5/EY oleellisten vaatimusten ja sitä koskevien direktiivin muiden ehtojen mukainen.
Swedish Svenska	Härmed intygar SMC Networks att denna Radio LAN device står i överensstämmelse med de väsentliga egenskapskrav och övriga relevanta bestämmelser som framgår av direktiv 1999/5/EG

Icelandic	Hér með lýsir SMC Networks yfir því að Radio LAN device er í samræmi við grunnkröfur og aðrar kröfur, sem gerðar eru í tilskipun 1995/5/EC.
Norwegian	SMC Networks erklærer herved at utstyret Radio LAN device er i samsvar med de grunnleggende krav og øvrige relevante krav i direktiv 1995/5/EF.



# ABOUT THIS GUIDE

**PURPOSE** This guide details the hardware features of the wireless USB adapter, including its physical and performance-related characteristics, and how to install the device and use its configuration software.

**AUDIENCE** This guide is for PC users with a working knowledge of computers. You should be familiar with Windows operating system concepts.

**CONVENTIONS** The following conventions are used throughout this guide to show information:



**NOTE:** Emphasizes important information or calls your attention to related features or instructions.

---



**CAUTION:** Alerts you to a potential hazard that could cause loss of data, or damage the system or equipment.

---



**WARNING:** Alerts you to a potential hazard that could cause personal injury.

---

**RELATED PUBLICATIONS** The following publication gives basic information on how to install and use the wireless USB adapter.

The *SMCWUSBS-N3 Quick Installation Guide*

Also, as part of the wireless USB adapter's software, there is an online web-based help that describes all configuration related features.

**REVISION HISTORY** This section summarizes the changes in each revision of this guide.

**SEPTEMBER 2009 REVISION**

This is the first revision of this guide.

# CONTENTS

<b>WARRANTY AND PRODUCT REGISTRATION</b>	<b>4</b>
<b>COMPLIANCES</b>	<b>5</b>
<b>ABOUT THIS GUIDE</b>	<b>9</b>
<b>CONTENTS</b>	<b>10</b>
<b>1 INTRODUCTION</b>	<b>12</b>
Key Features	12
Description of Hardware Capabilities	13
System Requirements	13
Package Contents	13
Hardware Description	14
LED Indicators	14
<b>2 WINDOWS 2000/XP INSTALLATION</b>	<b>15</b>
Using the Setup Wizard	17
<b>3 WINDOWS 2000/XP CONFIGURATION</b>	<b>20</b>
Accessing the SMC Connection Manager	20
Wireless Utility Configuration	21
AP List	22
Profile	23
WMM	26
Advanced	27
Statistics	28
About	29
Help	29
<b>4 NETWORK PLANNING</b>	<b>30</b>
Ad Hoc Wireless LAN	30
Infrastructure Wireless LAN	31
<b>5 AP MODE CONFIGURATION</b>	<b>32</b>

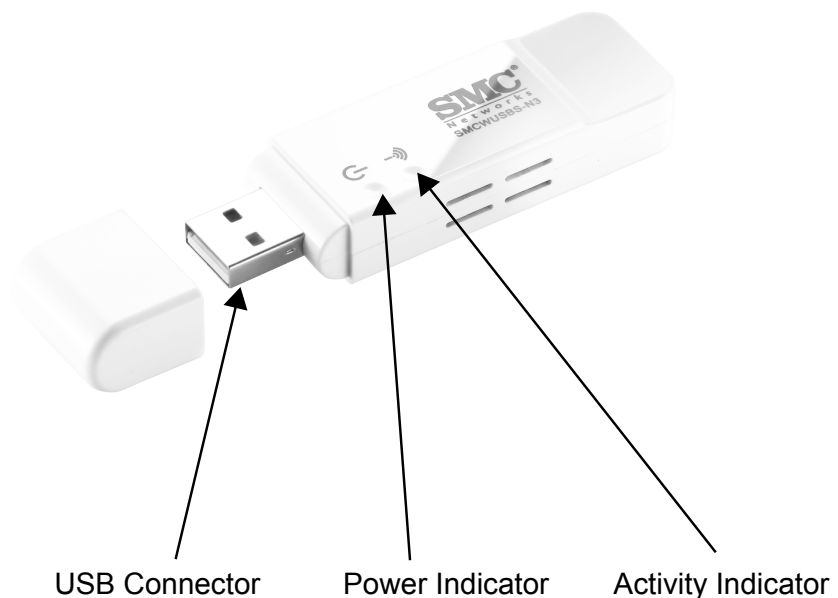
Switching to AP Mode	32
AP Mode Utility Configuration	33
Configuration	33
Access Control	35
Client List	36
Status	37
About	38
Switching to Station Mode	38
<b>A TROUBLESHOOTING</b>	<b>39</b>
USB Adapter Installation Problems	39
Network Connection Problems	39
Uninstalling the Utility	40
<b>B HARDWARE SPECIFICATIONS</b>	<b>42</b>
<b>GLOSSARY</b>	<b>44</b>
<b>INDEX</b>	<b>48</b>

# 1

## INTRODUCTION

The SMCWUSBS-N3 is a Wi-Fi (IEEE 802.11b/g/n) Wireless USB Adapter that enables wireless connectivity for your PC. The device provides a Wi-Fi client solution for PCs using a USB 2.0 interface. The USB adapter also includes a comprehensive configuration, site survey, and profile management utility that can be installed on a Windows 2000, Windows XP or Windows Vista system.

**Figure 1: SMCWUSBS-N3**



---

## KEY FEATURES

The Wireless USB Adapter supports the following features:

- ◆ Wi-Fi compliant with IEEE 802.11n and IEEE 802.11b/g standards
- ◆ High-speed connection up to 150 Mbps in 802.11n mode
- ◆ Dynamic data rate scaling from 1 to 150 Mbps
- ◆ Low interference and high susceptibility to guarantee reliable performance
- ◆ Supports WEP, WPA-PSK, WPA2-PSK security

- ◆ WMM (Wi-Fi Multimedia)
- ◆ Windows 2000, XP and Vista drivers
- ◆ WHQL certified
- ◆ WLAN site survey and profile management utility
- ◆ Infrastructure and Ad-hoc operating modes

---

## DESCRIPTION OF HARDWARE CAPABILITIES

SMC's EZ Connect Wireless USB Adapter supports wireless communications at up to 150 Mbps. This adapter operates in the 2.4 GHz band and is fully compliant with IEEE 802.11b/g and 802.11n. It can be installed in a notebook or desktop PC with a USB port. Support is provided for Windows 2000, Windows XP, and Windows Vista.

---

## SYSTEM REQUIREMENTS

Before you install the EZ Connect Wireless USB Adapter, check your system meets the following requirements:

- ◆ 2.4 GHz 802.11n or 802.11b/g wireless network.
- ◆ Microsoft Windows 2000, XP or Vista.
- ◆ A Notebook or desktop computer with:
  - 300 MHz CPU or above
  - Available USB 2.0 port
  - 20 MB of available hard disk space
  - CD-ROM drive

---

## PACKAGE CONTENTS

The Wireless USB Adapter package includes these items:

- ◆ EZ Connect N Wireless USB 2.0 Adapter (SMCWUSBS-N3)
- ◆ EZ Installation Wizard & Documentation CD
- ◆ Quick Installation Guide
- ◆ Warranty Information Card

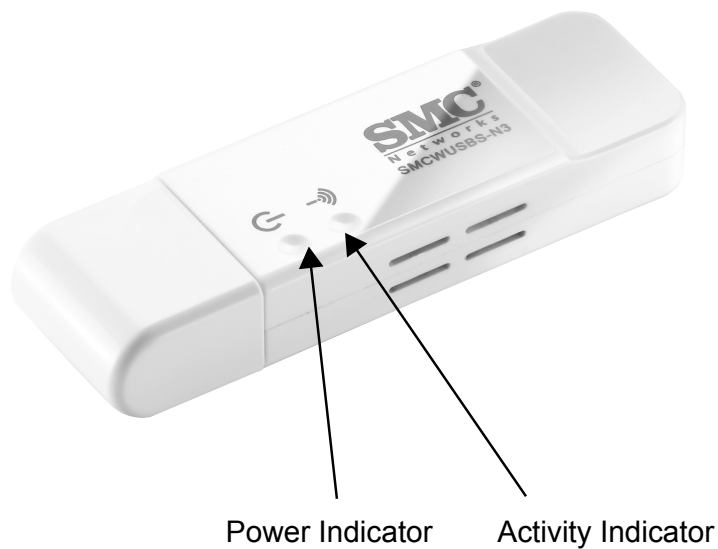
Inform your dealer if there are any incorrect, missing or damaged items. If possible, retain the carton, including the original packing materials. Use them to repack the product in case there is a need to return it.

## HARDWARE DESCRIPTION

SMC's EZ Connect Wireless USB Adapter supports wireless communications at up to 150 Mbps. This adapter operates in the 2.4 GHz band and is fully compliant with IEEE 802.11b/g and 802.11n. It can be installed in a notebook or desktop PC with a USB port. Support is provided for Windows 2000, Windows XP, and Windows Vista.

**LED INDICATORS** The Wireless USB Adapter includes two status LED indicators, as described in the following figure and table.

**Figure 2: LEDs**



**Table 1: LED Behavior**

LED	Status	Description
Power	On	Indicates the power is on.
	Off	Indicates the power is off.
Activity	Flashing Green	Indicates the power is on, and the 802.11b/g/n radio is enabled. Flashing indicates wireless network activity.
	Off	Indicates the power is off, or the 802.11b/g/n radio is disabled

# 2

## WINDOWS 2000/XP INSTALLATION

The CD-ROM that comes with the package contains the USB driver and software utility for the Wireless USB Adapter. New or updated drivers can be downloaded from SMC's web site at <http://www.smc.com>.

The installation screens are similar for Windows 2000, Windows XP and Windows Vista. The installation interface for Windows XP is shown in this user guide.

To install the Wireless USB Adapter's driver and utilities for Windows 2000 and Windows XP, follow these steps:

1. Turn on your PC and wait until the Windows system has completely started.
2. Load the EZ Installation & Documentation CD that comes with the package. The install program should start automatically.
3. Click "Install SMC Connection Manager" to start the installation.

**Figure 3: EZ Connect CD - Start Screen**



4. Choose "Install driver and SMC Connection Manager", then click Next to continue the installation. If the install program does not start automatically, open the folder that displays the CD's contents and find the file "Install.exe" in the root directory. Double click the file to start the install program.



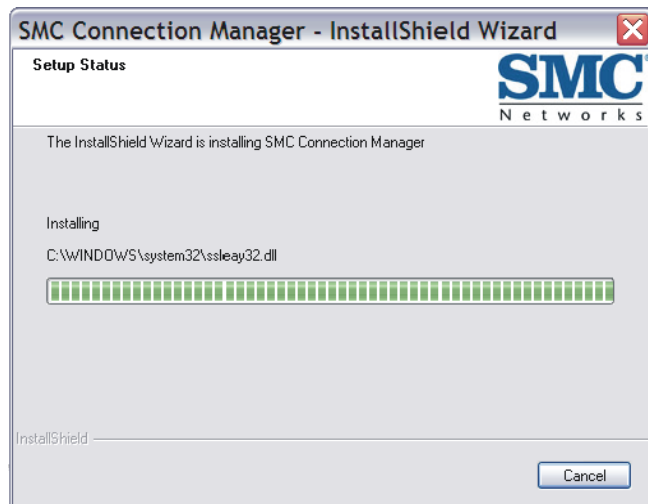
**NOTE:** You also have the option of installing only the driver and not the SMC Connection Manager. In this case, the Windows system wireless management utility can be used to set up wireless connections.

**Figure 4: EZ Connect CD - Setup Type**



5. Wait for the software installation procedure to complete.

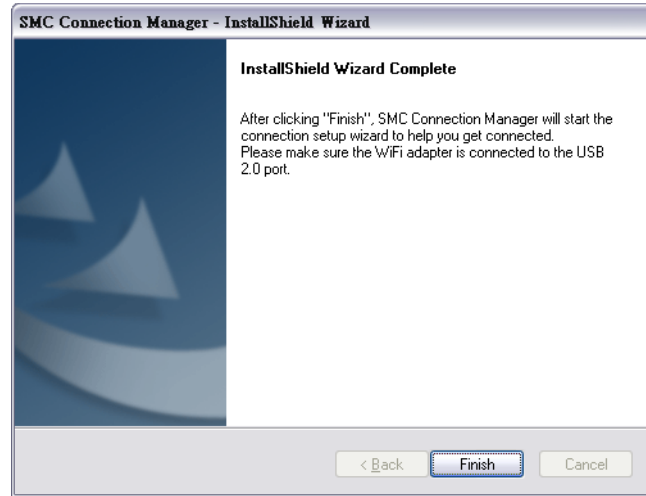
**Figure 5: EZ Connect CD - Installation in Progress**





- When the "InstallShield Wizard Complete" window displays click Finish to exit the wizard.

**Figure 6: EZ Connect CD - Installation Wizard Complete**



## USING THE SETUP WIZARD

Once the InstallShield Wizard is complete, the Setup Wizard takes you through configuration procedures for the general settings. Follow these steps:

- Select the AP to which you want to connect from the displayed list, then click "Next" to continue the configuration.

**Figure 7: Setup Wizard - Select an AP**



2. Sets the wireless settings for the wireless network. The corresponding authentication mode and encryption key displays. Name the profile and enter a key or password then click "Connect" . The wizard will set this profile as the default connection setting.

**Figure 8: Setup Wizard - Wireless Profile Settings**



3. The following prompt message will appear. Click "Yes" to save the settings and complete the set-up.

**Figure 9: Setup Wizard - Save Profile Message Window**



4. The following window displays current link status.

**Figure 10: Setup Wizard - Link Status**

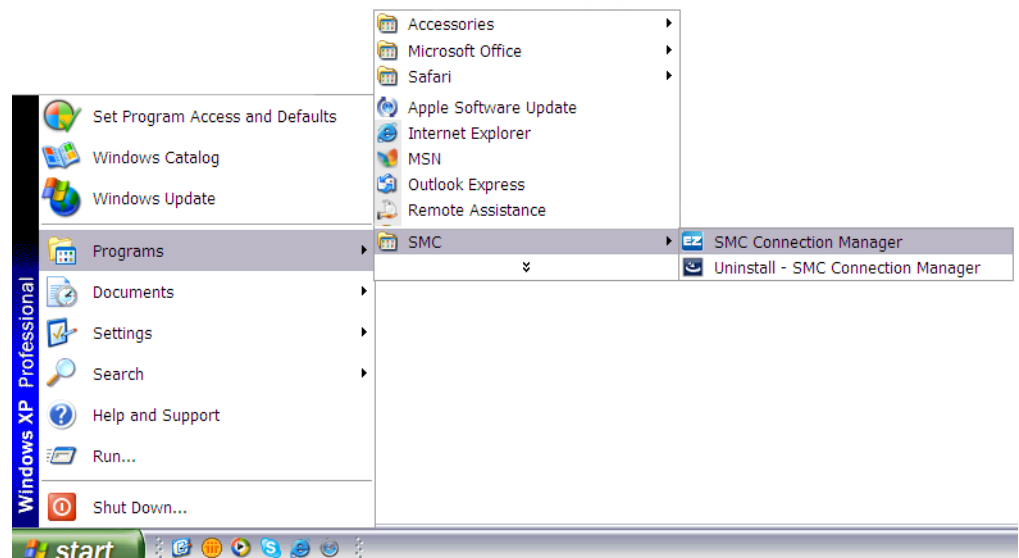


- ◆ **Network Name** — The service set identifier for this access point.
- ◆ **Link Status** — The connection status.
- ◆ **Signal Strength** — The current receive signal strength indication.
- ◆ **Channel** — The current channel in use.
- ◆ **IP Address** — The assigned IP address of the USB adapter.

## ACCESSING THE SMC CONNECTION MANAGER

Once the SMC Connection Manager installation is complete, the configuration utility can be accessed by selecting the "SMC Connection Manager" icon from the "SMC" folder.

**Figure 11: Accessing EZ Connect N3 Wireless Utility**



A quick launch icon will appear in the lower right-hand corner of the task bar.

**Figure 12: EZ Connect N3 Wireless Utility Icon**



When the utility icon is displayed, it indicates that the Wireless USB Adapter driver is installed properly.

Double-click the icon to open the SMC Connection Manager program, providing quick access to the adapter settings.


The utility screens are similar in Microsoft Windows 2000, XP and Vista. The interface for Windows XP is described in this user guide.

## WIRELESS UTILITY CONFIGURATION

The SMC Connection Manager screen for Windows 2000, XP and Vista systems include the options in the table below. For details on the configuration for each feature, see the corresponding page number.

**Table 2: Windows 2000/XP Utility Configuration Options**

Tools	Description	Page
AP List	Displays available wireless networks	22
Profile List	Configures the basic wireless settings for multiple profiles	23
WMM	Enables Wi-Fi Multimedia (WMM) features	26
Advanced	Configures the advanced wireless settings	27
Statistics	Displays the detail counter information	28
About	Displays software information	29
Help	Launches EZ connect wireless utility help	29

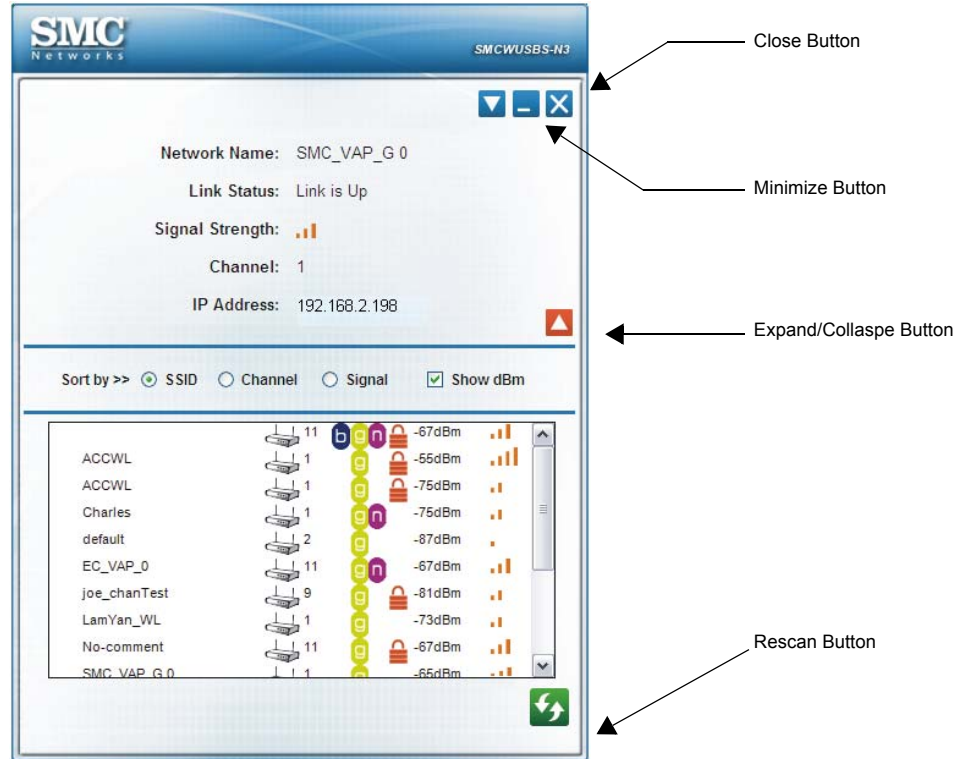
To access menu items, double click the quick launch icon and then click on  to display the menu.

**Figure 13: Menu Item**



**AP LIST** The AP List setting page allows you to set and save different wireless settings. You can activate the suitable profile according to where the wireless connection is used.

**Figure 14: AP List**









The displayed items on this page can be described as follows:

**Sort by** — Indicate that the AP list is sorted by SSID, Channel or Signal.

**Show dBm** — Show a value for the strength of the received signal. A SSID with -55 dBm has a stronger signal than a SSID with -87 dBm.

**Rescan** — Click the button to scan all channels for nearby wireless networks.

**Table 3: Icon Indications**

Icons	Description
	Network type is infrastructure mode
	Network type is ad-hoc mode
	Wireless network is security-enabled
	The network supports 802.11b connections
	The network supports 802.11g connections
	The network supports 802.11n connections

**PROFILE** The profile settings page allows you to set and save different wireless settings. You can activate the suitable profile according to where the wireless connection is used.

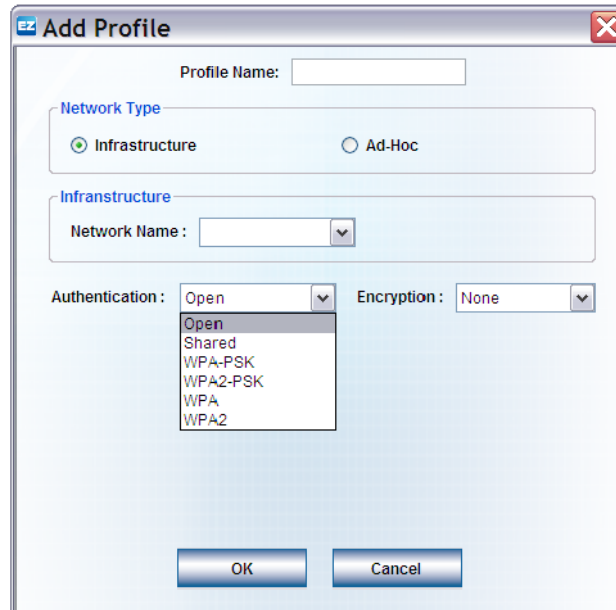
**Figure 15: Profile - System Configuration**



To Add a profile, click the Add button and configure the following displayed items:

- ◆ **Profile Name** – The name of the profile. (0-32 ASCII characters and symbols are allowed; no spaces can be used)
- ◆ **Network Type** – The type of wireless network. (Default: Infrastructure)
  - **Infrastructure** – An integrated wireless and wired LAN is called an Infrastructure configuration. Select Infrastructure to associate to an AP.
  - **Ad hoc** – An ad hoc wireless LAN is a group of computers each with wireless adapters, connected as an independent wireless LAN. Select Ad hoc to associate to a peer computer.
  - **Network Name** – Select the SSID (Service Set Identity) name of the wireless network to which the client will connect.
  - **Channel** (only available when “Ad hoc” is selected as the network type) – The radio channel used to communicate with wireless clients. The channel has to be the same as the peer computer.
- ◆ **Authentication / Encryption** – Configure authentication and encryption to match the security of the wireless network.

**Figure 16: Profile - Authentication and Encryption**



The displayed items on this page can be described as follows:

- ◆ **Authentication** – Select the authentication mode. For an infrastructure network, six modes are supported by the Wireless USB Adapter, including Open, Shared, WPA-PSK, WPA2-PSK, WPA and WPA2. For an ad hoc network, Open and Shared modes are supported.
  - **Open** – Open-system authentication accepts any client attempting to connect to the access point without verifying its identity.
  - **Shared** – The shared-key approach uses Wired Equivalent Privacy (WEP) to verify client identity by distributing a shared key to clients before attempting authentication.
  - **WPA / WPA-PSK** – Wi-Fi Protected Access (WPA) employs a combination of technologies to provide an enhanced security solution for wireless networks. The WPA Pre-shared Key (WPA-PSK) mode for small networks uses a common password phrase that must be manually distributed to all clients that want to connect to the network.
  - **WPA2 / WPA2-PSK** – WPA2 is a further security enhancement that includes the now ratified IEEE 802.11i wireless security standard.
- ◆ **Encryption** – Configure the encryption. For open and shared authentication mode, the selection options are None and WEP. For WPA, WPA2, WPA-PSK and WPA2-PSK authentication mode, the encryption type supports both TKIP and AES.
  - **None** – No encryption is used.



- **WEP** – Enables the Wireless USB Adapter to use WEP shared keys. If enabled, you must configure at least one key. Wired Equivalent Privacy (WEP) provides a basic level of security, preventing unauthorized access to the network and encrypting data transmitted between wireless clients. WEP uses static shared keys (fixed-length hexadecimal or alphanumeric strings) that are manually distributed to all clients that want to use the network.
  - **TKIP** – Use Temporal Key Integrity Protocol (TKIP) keys for encryption. WPA specifies TKIP as the data encryption method to replace WEP. TKIP avoids the problems of WEP static keys by dynamically changing data encryption keys.
  - **AES** – Use Advanced Encryption Standard (AES) keys for encryption. WPA2 uses AES Counter-Mode encryption with Cipher Block Chaining Message Authentication Code (CBC-MAC) for message integrity. The AES Counter-Mode/CBCMAC Protocol (AES-CCMP) provides extremely robust data confidentiality using a 128-bit key. Use of AES-CCMP encryption is specified as a standard requirement for WPA2. Before implementing WPA2 in the network, be sure client devices are upgraded to WPA2-compliant hardware.
- ◆ **802.1X** — Use IEEE 802.1X (802.1X) for user authentication and distributing dynamically generated encryption keys. IEEE 802.1X is a standard framework for network access control that uses a RADIUS server on the local network for user authentication. The 802.1X standard uses the Extensible Authentication Protocol (EAP) to pass user credentials (either digital certificates, usernames and passwords, or other) from the client to the RADIUS server.

**Figure 17: Profile - 802.1X Configuration**

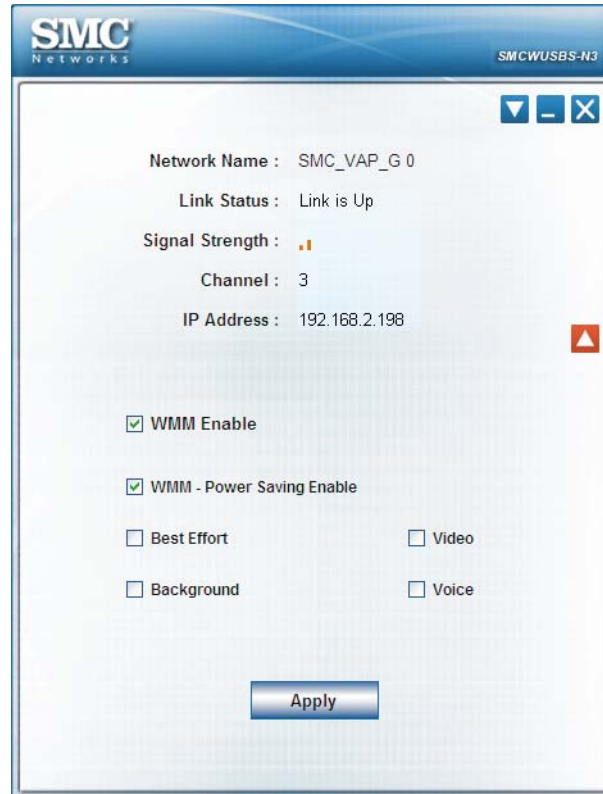
The screenshot shows a configuration window titled "802.1x Configuration". It contains the following fields:

EAP Method	LEAP
Identity	<input type="text"/>
Password	<input type="text"/>
Domain Name	<input type="text"/>

- **EAP Method (LEAP)** – The Lightweight Extensible Authentication Protocol (LEAP) is an EAP authentication type used primarily in Cisco Aironet WLANs. It encrypts data transmissions using dynamically generated WEP keys, and supports mutual authentication. When LEAP is selected, input LEAP identity, password, domain name, and select encryption type. Check the Show Password box to display password characters as you type instead of asterisks.
- **Identity / Password** – Configures the identity and password for authentication.
- **Domain Name** – Enable the wireless configuration utility to check the end of domain name. If defects are found, the connection is dropped.

**WMM** Wi-Fi Multimedia (WMM), also known as Wireless Multimedia Extensions (WME), is a Wi-Fi Alliance interoperability certification. It provides basic Quality of Service (QoS) features for IEEE 802.11 wireless networks.

**Figure 18: WMM**



The displayed items on this page can be described as follows:

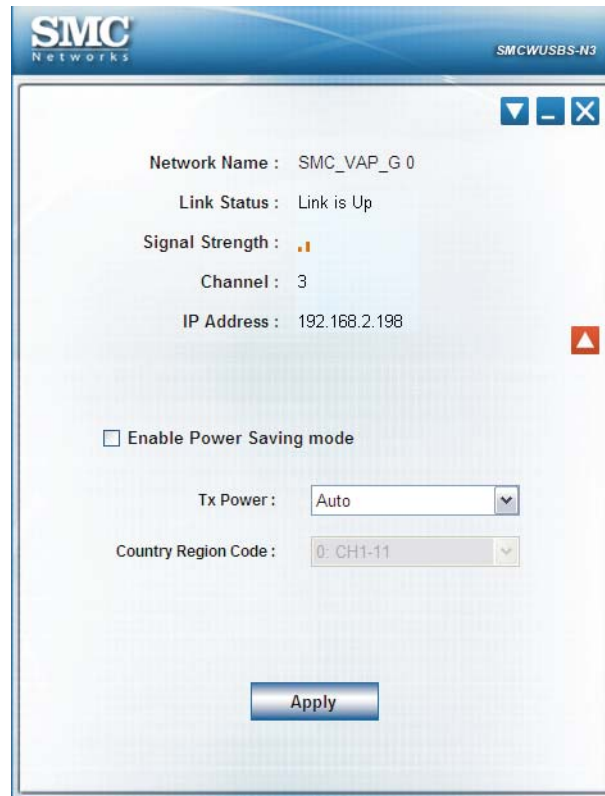
**WMM Enable** — Enable WMM function.

◆ **WMM - Power Save Enable** – Enable the power save mode.

- **Best Effort** – Normal priority, medium delay and throughput. Data only affected by long delays. Data from applications or devices that lack QoS capabilities.
- **Background** – Lowest priority. Data with no delay or throughput requirements, such as bulk data transfers.
- **Video first** – High priority, minimum delay. Time-sensitive data such as streaming video.
- **Voice first** – Highest priority, minimum delay. Time-sensitive data such as VoIP (Voice over IP) calls.

**ADVANCED** The Advanced page allows you to configure extended features for the wireless network.

**Figure 19: Advanced**



The displayed items on this page can be described as follows:

- ◆ **Power Saving Mode** (available when “Infrastructure” is selected as the network type) – Enable or disable the power save operation.
- ◆ **TX Power** – Adjusts the power of the radio signals transmitted from the access point. The higher the transmission power, the farther the transmission range. Power selection is not just a trade off between coverage area and maximum supported clients. You also have to ensure that high-power signals do not interfere with the operation of other radio devices in the service area. (Options: Auto, 100%, 50%, 25%, 10%, Lowest; Default: Auto)
- ◆ **Country Region Code** — Select the country in which the device is being used. Setting the country code restricts operation of the device to radio channels and transmit power levels permitted for wireless networks as specified by the local regulatory authority.

**STATISTICS** The statistics page displays the connection-related statistics with detail counter information.

**Figure 20: Statistics**

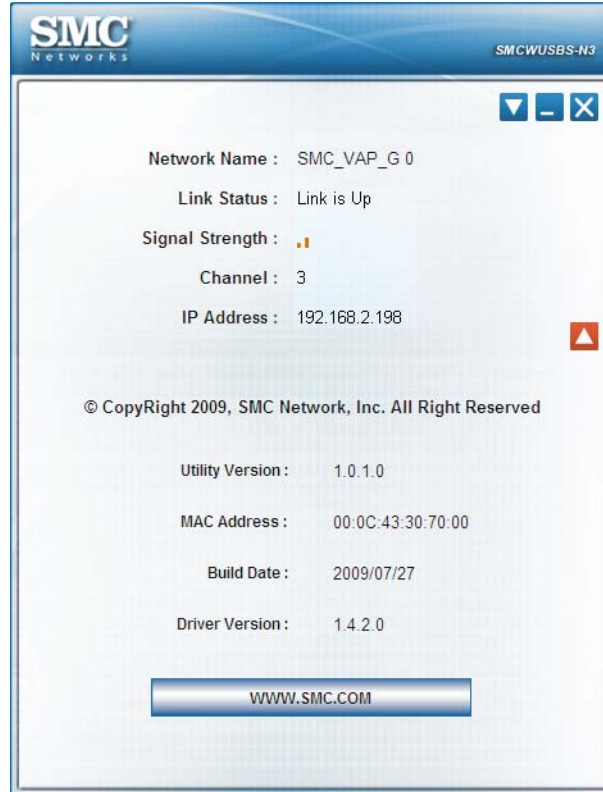


The displayed items on this page can be described as follows:

- ◆ **Link Speed** — The current transmitting and receiving rates.
- ◆ **Throughput** — The transmitting and receiving throughputs.

**ABOUT** The About page displays the information about version numbers of the configuration utility, firmware and other information of the device. Click the WWW.SMC.COM button to visit the SMC web site.

**Figure 21: About Information Display**



**HELP** The help page provides detailed information about each setting of the SMC Connection Manager. Click a menu item on the left screen and view the information on the right screen.

SMC's EZ Connect Wireless Solution supports a stand-alone wireless network configuration, as well as an integrated configuration with Ethernet LANs.

The SMCWUSBS-N3 wireless USB adapter can be configured as:

- ◆ **Ad hoc** - for small peer-to-peer networks with other wireless devices
- ◆ **Infrastructure** - for a wireless extension to an existing wired LAN through an access point

---

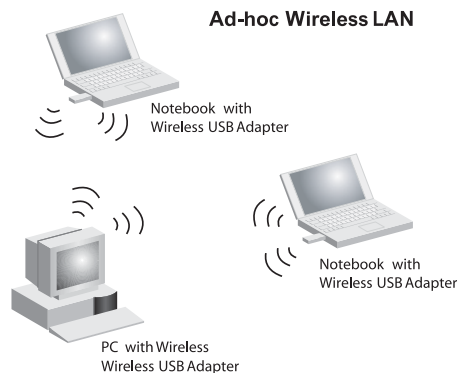
## AD HOC WIRELESS LAN

An ad hoc wireless LAN consists of a group of computers, each equipped with a wireless adapter, connected through radio signals as an independent wireless LAN.

Computers in a specific ad hoc wireless LAN must be configured to the same radio channel.

An ad hoc wireless LAN can be used for a small branch office or SOHO operation.

**Figure 22: Ad Hoc Wireless LAN**



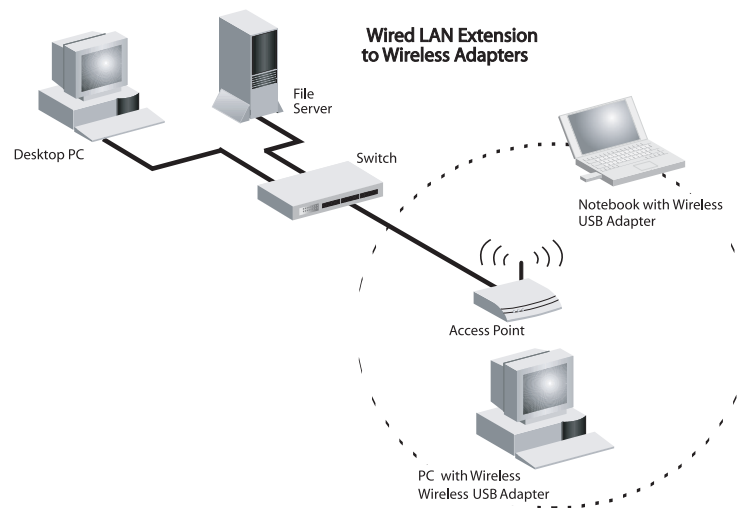
## INFRASTRUCTURE WIRELESS LAN

The SMCWUSB-N3 can also provide access to a wired LAN for wireless workstations. An integrated wired and wireless LAN is called an Infrastructure configuration. A Basic Service Set (BSS) consists of a group of wireless PC users, and an access point that is directly connected to the wired LAN. Each wireless PC in this BSS can communicate with to any computer in its wireless group via a radio link, or access other computers or network resources in the wired LAN infrastructure via an access point.

The infrastructure configuration not only extends the accessibility of wireless PCs to the wired LAN, but also increases the effective wireless transmission range for wireless PCs by passing their signal through one or more access points.

A wireless infrastructure can be used for access to a central database, or for connection between mobile workers, as shown in the following figure.

**Figure 23: Infrastructure Wireless LAN**



The USB Adapter's utility can extend the functionality of the device by adding an Access Point (AP) mode to its normal client capabilities. This feature is only available for Windows 2000, XP and Vista.

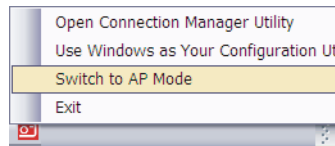
In AP mode, the USB Adapter operates as a "Soft AP." The Soft AP feature creates a Wireless LAN to Ethernet bridge using the host PC's existing Ethernet port. When the host PC has an Internet connection, the Soft AP uses the Windows Internet Connection Sharing (ICS) feature to enable all associated wireless clients to share the PC's connection.

---

## SWITCHING TO AP MODE

Click the SMC Connection Manager icon with the right mouse button and then select "Switch to AP Mode."

**Figure 24: System Tray Icon Menu**



A ICS (Internet Connection Sharing) screen appears after switching to AP mode. Select a network and click OK to start the the Soft AP utility configuration.

**Figure 25: ICS Select WAN Adatpter**



**NOTE:** Sometimes switching the application from station mode to AP mode will cause error message "Failed to enable ICS". This issue is due to ICS program of XP is not stable enough. Please close the application and then re-execute the application.

---



When set up, double-click the quick launch icon to open the Soft AP utility configuration. The utility screens are similar in all Microsoft Windows systems. The interface for Windows XP is described in this user guide.

## AP MODE UTILITY CONFIGURATION

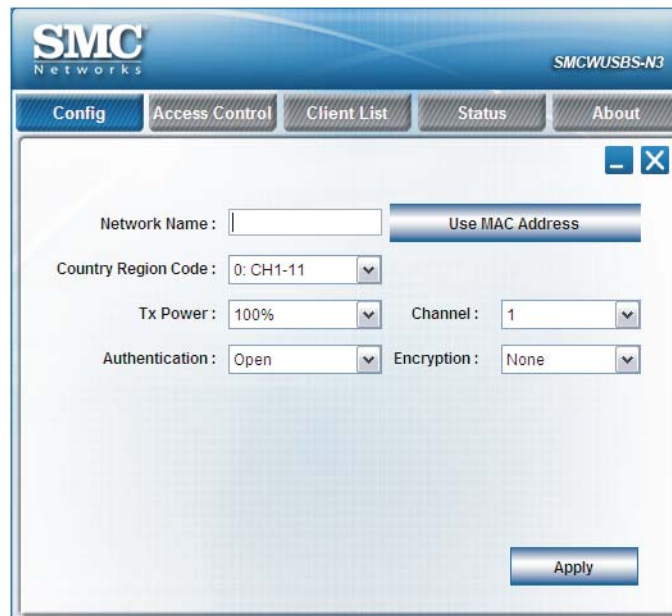
The Soft AP utility screen includes the options in the table below. For details on the configuration for each feature, see the corresponding page number.

**Table 4: Utility Configuration Options**

Tools	Description	Page
Config	Configures the basic wireless settings for multiple profiles	33
Access Control	Controls the MAC address connected to the AP	35
Client List	Displays client list information	36
Status	Displays device information	37
About	Displays software information	37

**CONFIGURATION** The configuration page allows you to set parameters for the wireless network.

**Figure 26: Configuration**



The displayed items on this page can be described as follows:

- ◆ **Network Name** — The service set identifier for this access point.
- ◆ **Use Mac Address** — Click the button to display the physical layer address of the access point.

- ◆ **Country Region Code** — Select the country region where the access point is in operation.

**Table 5: Country Channel List**

Classification	Range
0: USA, Canada, Taiwan	CH 1 ~ CH 11
1: Europe	CH 1 ~ CH 13
2: Spain	CH 10 ~ CH 11
3: France	CH 10 ~ CH 13
4: Japan (MKK)	CH 14
5: Japan (TELEC)	CH 1 ~ CH 14
6: ISRAEL	CH 3 ~ CH 9
7: ISRAEL	CH 5 ~ CH 13

- ◆ **TX Power** — Set the access point transmit power. (Default: 100%)
- ◆ **Channel** — The radio channel used to communicate with wireless clients.
- ◆ **Security Setting** — Configure the authentication and encryption.
- ◆ **Authentication** – Selects the wireless security mechanism for the network.
  - **Open** – Accepts any client attempting to connect to the access point without verifying its identity.
  - **Shared** – Uses Wired Equivalent Privacy (WEP) to verify client identity by distributing a shared key to clients.
  - **WPA-PSK** – Use pre-shared key authentication for WPA-compliant clients.
  - **WPA2-PSK** – Use pre-shared key authentication for WPA2-compliant clients.
  - **WPA-PSK / WPA2-PSK** – Use pre-shared key authentication for WPA- and WPA2-compliant clients when they coexist in the same network.
- ◆ **Encryption Type** – Selects the encryption cipher to use for multicast and unicast data traffic.
  - **None** – No encryption is used.
  - **WEP** – Uses WEP shared keys.
  - **TKIP** – Uses TKIP keys for both multicast and unicast encryption.
  - **AES** – Uses AES keys for both multicast and unicast encryption.

- ◆ **Pre-shared Key** – Enter a key as an easy-to-remember form of letters and numbers. The key must be from 8 to 32 characters, which can include spaces. All wireless clients must be configured with the same key to communicate with the access point.
- ◆ **WEP Key** – Only available when WEP encryption is selected. Standard keys are either 5 or 13 alphanumeric characters; or 10 or 32 hexadecimal digits. Check the Show Password box to display password characters as you type instead of asterisks.

Click Apply to confirm the configuration settings.

**ACCESS CONTROL** The access control page allows you to restrict the MAC addresses of clients wanting to connect with the AP.

**Figure 27: Access Control**



The displayed items on this page can be described as follows:

- ◆ **Access Policy** — Select a policy for access control. (Default: Disable)
  - **Disable** – Disable the feature.
  - **Allow All** – Allow the access for the listed MAC addresses.
  - **Reject All** – Deny the access for the listed MAC addresses.
- ◆ **Type MAC Address** — Input the MAC address of a wireless client.
- ◆ **Add** — Click to add the MAC address to the Access List.
- ◆ **Delete** — Click to delete a MAC address from the list.
- ◆ **Remove All** — Click to delete all the MAC addresses from the list.

- ◆ **Apply** — Click to apply the configuration changes.

**CLIENT LIST** The Client List page displays the current station link information.

**Figure 28: Client List**



The displayed items on this page can be described as follows:

- ◆ **MAC Address** — The MAC addresses of the connected stations.
- ◆ **Power Saving Mode** — The power saving status of the connected station.

**STATUS** The Status page displays the current network status.

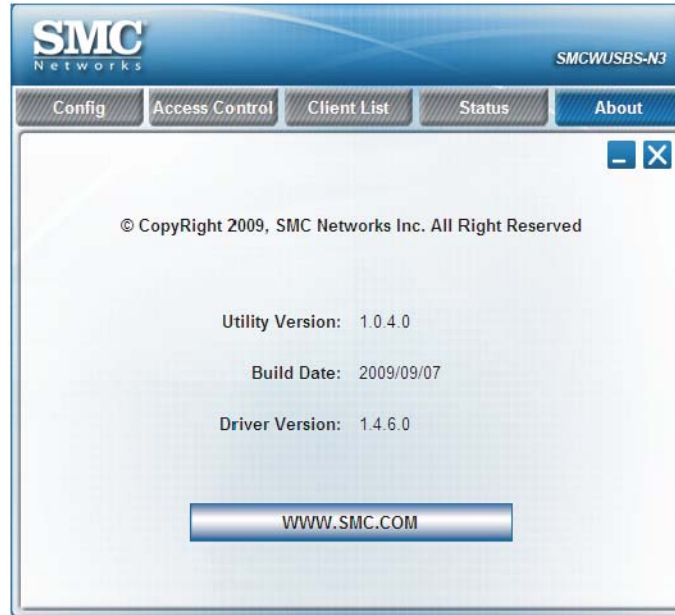
**Figure 29: Status**



- ◆ **IP Address** — The IP address of the USB adapter.
- ◆ **Physical Address** — The shared physical layer address for the USB adapter.
- ◆ **Sub Mask** — The IP address mask that identifies the host address bits used for routing to specific subnets.
- ◆ **Default Gateway** — The IP address of a router that is used when the requested destination address is not on the local subnet.
- ◆ **Frames Transmitted** — Displays the total number of packets transmitted.
- ◆ **Frames Received** — Displays the total number of packets received.

**ABOUT** The About page displays information about version numbers of the configuration utility, driver and build date of the device. Click the WWW.SMC.COM button to visit the SMC website.

**Figure 30: About Information Display**

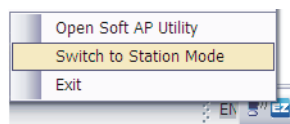


---

## SWITCHING TO STATION MODE

If you want to switch the device back to the client mode, right click the Soft AP system tray icon, and then select "Switch to Station Mode."

**Figure 31: Switch to Station Mode**



---

## USB ADAPTER INSTALLATION PROBLEMS

If your computer cannot find the EZ Connect Wireless USB Adapter or the network driver does not install correctly, check the following items:

- ◆ Make sure the adapter is connected to the USB port. Check for any hardware problems, such as physical damage to the adapter's connector.
- ◆ Try the adapter in another USB port. If this also fails, try using another SMCWUSBS-N3 wireless adapter that is known to operate correctly.
- ◆ Check for a defective computer or USB port by trying the adapter in another computer that is known to operate correctly.

---

## NETWORK CONNECTION PROBLEMS

If the Link/Activity LED on the USB adapter is not lit, or if you cannot access network resources from the computer, check the following:

- ◆ Make sure the correct software driver is installed. Try reinstalling the driver.
- ◆ Make sure the computer and other network devices are receiving power.
- ◆ The access point you want to connect to may not be functioning correctly. Try using another access point.
- ◆ If you cannot access a Windows service on the network, check that you have enabled and configured the service correctly. If you cannot connect to a particular server, be sure that you have access rights and a valid ID and password.
- ◆ If you cannot access the Internet, be sure you have currently configured your system for TCP/IP.

If your wireless station cannot communicate with a computer on the Ethernet LAN when configured for Infrastructure mode, check the following:

- ◆ Make sure the access point that the station is associated with is powered on.
- ◆ Check that the wireless settings (i.e., security, SSID, Channel) match the access point or other stations to which you are attempting to connect.
- ◆ If you still cannot connect, change the access point and all the stations within the BSS to another radio channel.

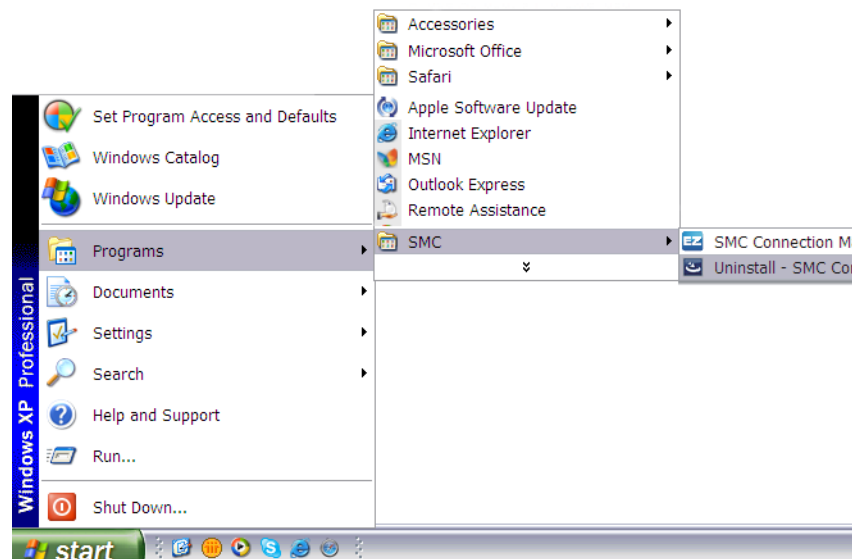
## UNINSTALLING THE UTILITY

If you are having problems with the utility, you may need to uninstall the software from the system.

Follow these steps:

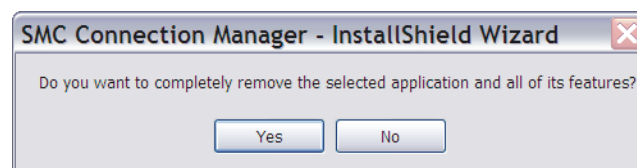
1. From the Windows Start menu, find the SMC EZ Connect N Utility uninstall option. Click to start the uninstall process.

**Figure 32: Windows XP Start Menu - Uninstall the Utility**



2. Click Yes to uninstall the utility.

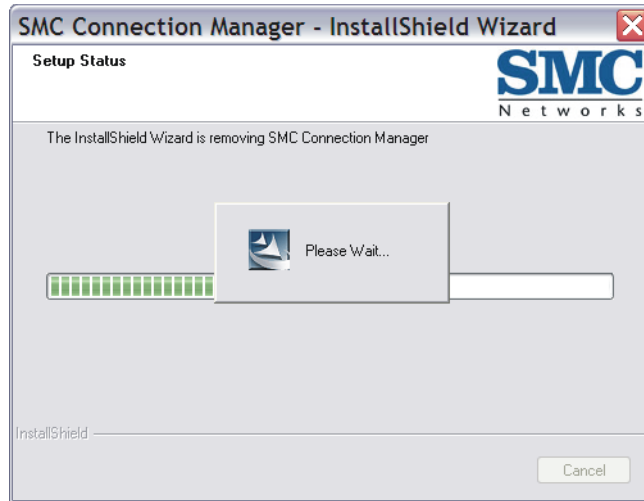
**Figure 33: Start the Uninstall Process**





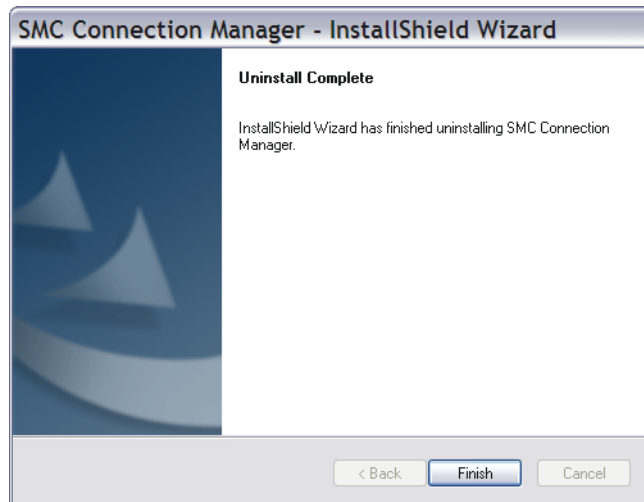
3. Wait while the software is uninstalled.

**Figure 34: Uninstall Process in Progress**



4. When the uninstall process is complete, click Finish to exit.

**Figure 35: Uninstall Process Complete**



# B

## HARDWARE SPECIFICATIONS

**INTERFACE** USB version 2.0 compliant

**POWER** +5V DC, 0.35A over USB connection

**RADIO SPECIFICATIONS** IEEE 802.11n  
IEEE 802.11b/g

**FREQUENCY** North America/Taiwan NCC: 2.412 - 2.462 GHz  
Japan: 2.412 - 2.484 GHz  
Europe: 2.412 - 2.472 GHz

**MODULATION** 802.11b: CCK, QPSK, BPSK  
802.11g: BPSK, QPSK, 16QAM, 64QAM  
802.11n: BPSK, QPSK, 16QAM, 64QAM

**OPERATING CHANNELS** North AmericaN Certification: FCC&Taiwan Certification: NCC  
Certification: FCC; Channel: 1~11  
Japan  
Certification: JTAC; Channel: 1~14  
Europe  
Certification: ETSI; Channel: 1~13

**DATA RATE SHIFTING** 802.11b: 11, 5.5, 2, 1 Mbps per channel  
802.11g: 54, 48, 36, 24, 18, 12, 9, 6 Mbps.  
802.11n: up to 150 Mbps

**ANTANNA** One internal antenna  
Frequency Range: 2.4 - 2.5 GHz  
Gain: 2.65 dBi  
VSWR: 2.0 Max  
Polarization: Linear  
Impedance: 50 Ohm  
Antenna Type: Printed

**LED INDICATORS** Power, Link/Activity

**TX OUTPUT POWER(AV)** 802.11b: 18 dBm  
**(TYPICAL)** 802.11g: 16 dBm (at 54Mbps)  
 802.11n: 16 dBm

**RX SENSITIVITY** -88 dBm @ 11 Mbps  
**(TYPICAL)** -72 dBm @ 54 Mbps  
 -68 dBm @ 64-QAM, 20MHz channel spacing  
 -63 dBm @ 64-QAM, 40MHz channel spacing

**PHYSICAL SIZE** 25 x 67 x 13 mm (0.98 x 2.63 x 0.51 in.)

**WEIGHT** 25 g (0.88 oz)

**TEMPERATURE** Operating: -5 to 45 °C (23° to 104°F)  
 Storage: -20 to 70 °C (-4° to 158°F)

**HUMIDITY** Operating: 0%~70% Non-condensing  
 Storage: 10%~90% Non-condensing

**EMC** FCC: Part15 subpart C  
 IC: RSS-210  
 CE: EN300328  
 NCC: LP0002  
 C-Tick

**RADIO** FCC: Part15 subpart B  
 IC: CES-003  
 CE: EN301489-1/-17

**SAFETY** CE: EN60950-1

# GLOSSARY

- 10BASE-T** IEEE 802.3-2005 specification for 10 Mbps Ethernet over two pairs of Category 3 or better UTP cable.
- 100BASE-TX** IEEE 802.3-2005 specification for 100 Mbps Fast Ethernet over two pairs of Category 5 or better UTP cable.
- 1000BASE-T** IEEE 802.3ab specification for 1000 Mbps Gigabit Ethernet over four pairs of Category 5 or better UTP cable.
- ACCESS POINT** An internetworking device that seamlessly connects wired and wireless networks. Access points attached to a wired network, support the creation of multiple radio cells that enable roaming throughout a facility.
- Ad Hoc** A group of computers connected as an independent wireless network, without an access point.
- AES** Advanced Encryption Standard: An encryption algorithm that implements symmetric key cryptography. AES provides very strong encryption using a completely different ciphering algorithm to TKIP and WEP.
- AUTHENTICATION** The process to verify the identity of a client requesting network access. IEEE 802.11 specifies two forms of authentication: open system and shared key.
- BACKBONE** The core infrastructure of a network. The portion of the network that transports information from one central location to another central location where it is unloaded onto a local system.
- BSS** Basic Service Set: A set of 802.11-compliant stations and an access point that operate as a fully-connected wireless network.
- BEACON** A signal periodically transmitted from the access point that is used to identify the service set, and to maintain contact with wireless clients.

- BROADCAST KEY** Broadcast keys are sent to stations using dynamic keying. Dynamic broadcast key rotation is often used to allow the access point to generate a random group key and periodically update all key-management capable wireless clients.
- DHCP** Dynamic Host Configuration Protocol: Provides a framework for passing configuration information to hosts on a TCP/IP network. DHCP is based on the Bootstrap Protocol (BOOTP), adding the capability of automatic allocation of reusable network addresses and additional configuration options.
- ENCRYPTION** Data passing between the access point and clients can use encryption to protect from interception and eavesdropping.
- ETHERNET** A popular local area data communications network, which accepts transmission from computers and terminals.
- FTP** File Transfer Protocol: A TCP/IP protocol used for file transfer.
- HTTP** Hypertext Transfer Protocol: HTTP is a standard used to transmit and receive all data over the World Wide Web.
- ICMP** Message Protocol: A network layer protocol that reports errors in processing IP packets. ICMP is also used by routers to feed back information about better routing choices.
- IEEE 802.11B** A wireless standard that supports wireless communications in the 2.4 GHz band using Direct Sequence Spread Spectrum (DSSS). The standard provides for data rates of 1, 2, 5.5, and 11 Mbps.
- IEEE 802.11G** A wireless standard that supports wireless communications in the 2.4 GHz band using Orthogonal Frequency Division Multiplexing (OFDM). The standard provides for data rates of 6, 9, 12, 18, 24, 36, 48, 54 Mbps. IEEE 802.11g is also backward compatible with IEEE 802.11b.
- IEEE 802.11N** A wireless standard that supports wireless communications in the 2.4 GHz band using Orthogonal Frequency Division Multiplexing (OFDM). The standard provides for data rates of 27, 54, 81, 108, 162, 216, 243, 270, 300 Mbps. IEEE 802.11n is also backward compatible with IEEE 802.11b/g.
- IEEE 802.1X** Port Authentication controls access to the switch ports by requiring users to first enter a user ID and password for authentication.

- INFRASTRUCTURE** An integrated wireless and wired LAN is called an infrastructure configuration.
- LAN** Local Area Network: A group of interconnected computer and support devices.
- MAC ADDRESS** The physical layer address used to uniquely identify network nodes.
- NTP** Network Time Protocol: NTP provides the mechanisms to synchronize time across the network. The time servers operate in a hierarchical-master-slave configuration in order to synchronize local clocks within the subnet and to national time standards via wire or radio.
- OPEN SYSTEM** A security option which broadcasts a beacon signal including the access point's configured SSID. Wireless clients can read the SSID from the beacon, and automatically reset their SSID to allow immediate connection to the nearest access point.
- ODFM** Orthogonal Frequency Division Multiplexing: OFDM allows multiple users to transmit in an allocated band by dividing the bandwidth into many narrow bandwidth carriers.
- ROAMING** A wireless LAN mobile user moves around an ESS and maintains a continuous connection to the infrastructure network.
- RTS THRESHOLD** Transmitters contending for the medium may not be aware of each other. RTS/CTS mechanism can solve this "Hidden Node Problem." If the packet size is smaller than the preset RTS Threshold size, the RTS/CTS mechanism will NOT be enabled.
- SSID** Service Set Identifier: An identifier that is attached to packets sent over the wireless LAN and functions as a password for joining a particular radio cell; i.e., Basic Service Set (BSS).
- SHARED KEY** A shared key can be used to authenticate each client attached to a wireless network. Shared Key authentication must be used along with the 802.11 Wireless Equivalent Privacy algorithm.
- SNMP** Simple Network Management Protocol: The application protocol in the Internet suite of protocols which offers network management services.

- SNTP** Simple Network Time Protocol: SNTP allows a device to set its internal clock based on periodic updates from a Network Time Protocol (NTP) server. Updates can be requested from a specific NTP server, or can be received via broadcasts sent by NTP servers.
- TKIP** Temporal Key Integrity Protocol: A data encryption method designed as a replacement for WEP. TKIP avoids the problems of WEP static keys by dynamically changing data encryption keys.
- TFTP** Trivial File Transfer Protocol: A TCP/IP protocol commonly used for software downloads.
- Wi-Fi Protected Access** WPA employs 802.1X as its basic framework for user authentication and dynamic key management to provide an enhanced security solution for 802.11 wireless networks.
- WEP** Wired Equivalent Privacy: WEP is based on the use of security keys and the popular RC4 encryption algorithm. Wireless devices without a valid WEP key will be excluded from network traffic.
- PSK** WPA Pre-shared Key: PSK can be used for small office networks that may not have the resources to configure and maintain a RADIUS server, WPA provides a simple operating mode that uses just a pre-shared password for network access.

# INDEX

## NUMERICS

802.1X [25](#)

## A

Access Policy [35](#)  
Ad hoc [23](#), [30](#)  
AES [25](#), [34](#)  
AP Mode [32](#)  
Authentication [24](#), [34](#)  
Authentication / Encryption [23](#)

## B

Background [26](#)  
Best Effort [26](#)

## C

Channel [19](#), [23](#), [34](#)  
Country Region Code [27](#), [34](#)

## D

Domain Name [25](#)

## E

Encryption [24](#), [34](#)

## F

Frames Received [37](#)  
Frames Transmitted [37](#)

## H

Hardware Capabilities [13](#)  
Hardware Description [14](#)  
Help [29](#)

## I

ICS [32](#)  
IEEE 802.11n [12](#)  
Infrastructure [23](#), [30](#)  
Install Utility [15](#)  
Introduction [12](#)

## K

Key Features [12](#)

## L

LEAP [25](#)  
LED indicators [14](#)  
Link Speed [28](#)  
Link Status [19](#)

## M

MAC address [36](#)

## N

Network Name [19](#), [23](#)  
Network Type [23](#)

## O

Open System [24](#)

## P

Package Contents [13](#)  
Physical Address [37](#)  
Power Save Enable [26](#)  
Power Saving Mode [27](#), [36](#)  
Pre-shared Key [35](#)  
Profile Name [23](#)

## Q

QoS [26](#)

## R

Rescan [22](#)

## S

Shared Key [24](#), [34](#)  
Signal Strength [19](#)  
Station Mode [38](#)  
Statistics [28](#)



**T**

Throughput [28](#)  
TKIP [25](#), [34](#)  
Troubleshooting [39](#)  
TX Power [27](#)  
TX power [34](#)

**U**

Uninstal the Utility [40](#)

**V**

Video first [26](#)  
Voice first [26](#)

**W**

WEP [12](#), [25](#), [34](#), [35](#)  
Wi-Fi Multimedia [26](#)  
Windows 2000 [12](#), [13](#)  
Windows 2000/XP configuration [20](#)  
Windows Vista system [12](#)  
Windows XP [12](#)  
WMM [13](#), [26](#)  
WPA [24](#)  
WPA2 [24](#)  
WPA2-PSK [12](#), [24](#), [34](#)  
WPA-PSK [12](#), [24](#), [34](#)  
WPA-PSK / WPA2-PSK [34](#)

## TECHNICAL SUPPORT

From U.S.A. and Canada (24 hours a day, 7 days a week)  
Phn: (800) SMC-4-YOU / (949) 679-8000  
Fax: (949) 679-1481

**English:** Technical Support information available at [www.smc.com](http://www.smc.com)

**English (For Asia Pacific):** Technical Support information available at [www.smc-asia.com](http://www.smc-asia.com)

**Deutsch:** Technischer Support und weitere Information unter [www.smc.com](http://www.smc.com)

**Español:** En [www.smc.com](http://www.smc.com) Ud. podrá encontrar la información relativa a servicios de soporte técnico

**Français:** Informations Support Technique sur [www.smc.com](http://www.smc.com)

**Português:** Informações sobre Suporte Técnico em [www.smc.com](http://www.smc.com)

**Italiano:** Le informazioni di supporto tecnico sono disponibili su [www.smc.com](http://www.smc.com)

**Svenska:** Information om Teknisk Support finns tillgängligt på [www.smc.com](http://www.smc.com)

**Nederlands:** Technische ondersteuningsinformatie beschikbaar op [www.smc.com](http://www.smc.com)

**Polski:** Informacje o wsparciu technicznym są dostępne na [www.smc.com](http://www.smc.com)

**Čeština:** Technická podpora je dostupná na [www.smc.com](http://www.smc.com)

**Magyar:** Műszaki támogat információ elérhető -on [www.smc.com](http://www.smc.com)

简体中文: 技术支持讯息可通过[www.smc-prc.com](http://www.smc-prc.com)查询

繁體中文: 產品技術支援與服務請上 [www.smc-asia.com](http://www.smc-asia.com)

ไทย: สามารถหาข้อมูลทางด้านเทคนิคได้ที่ [www.smc-asia.com](http://www.smc-asia.com)

한국어: 기술지원관련 정보는 [www.smc-asia.com](http://www.smc-asia.com) 을 참고하시기 바랍니다

## INTERNET

E-mail address: [www.smc.com](http://www.smc.com) → Support → By email  
Driver updates: [www.smc.com](http://www.smc.com) → Support → Downloads

World Wide Web: <http://www.smc.com/>

