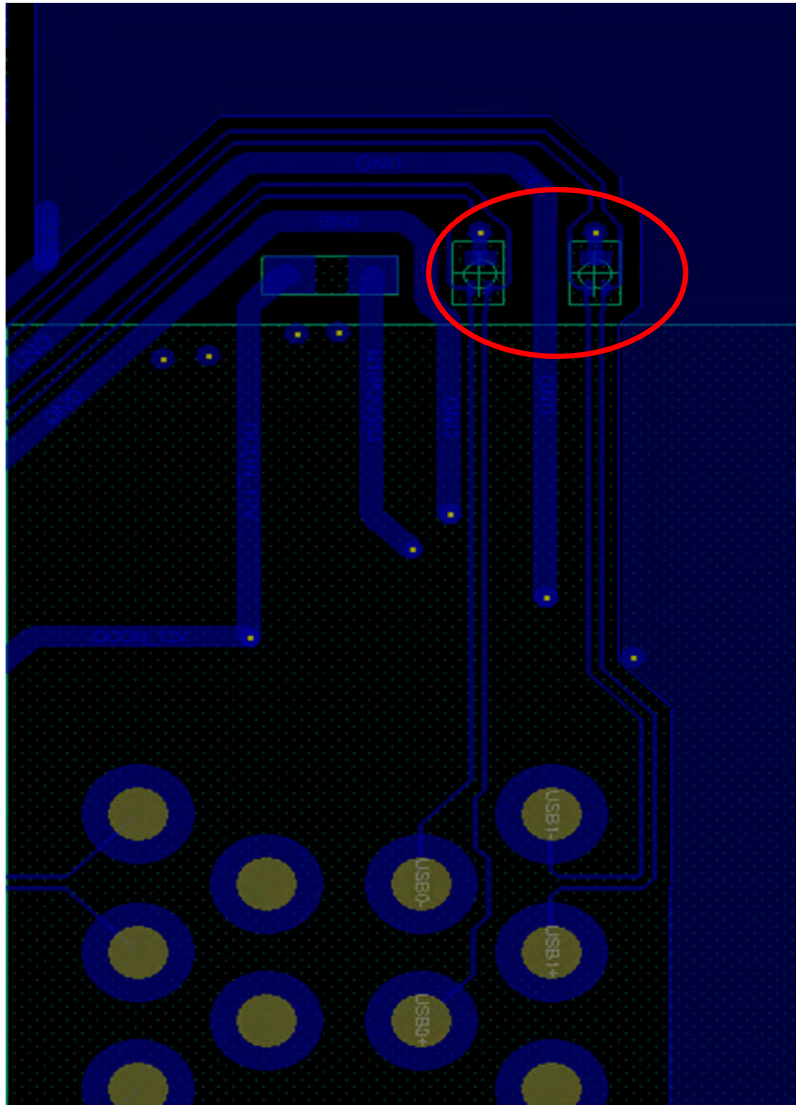


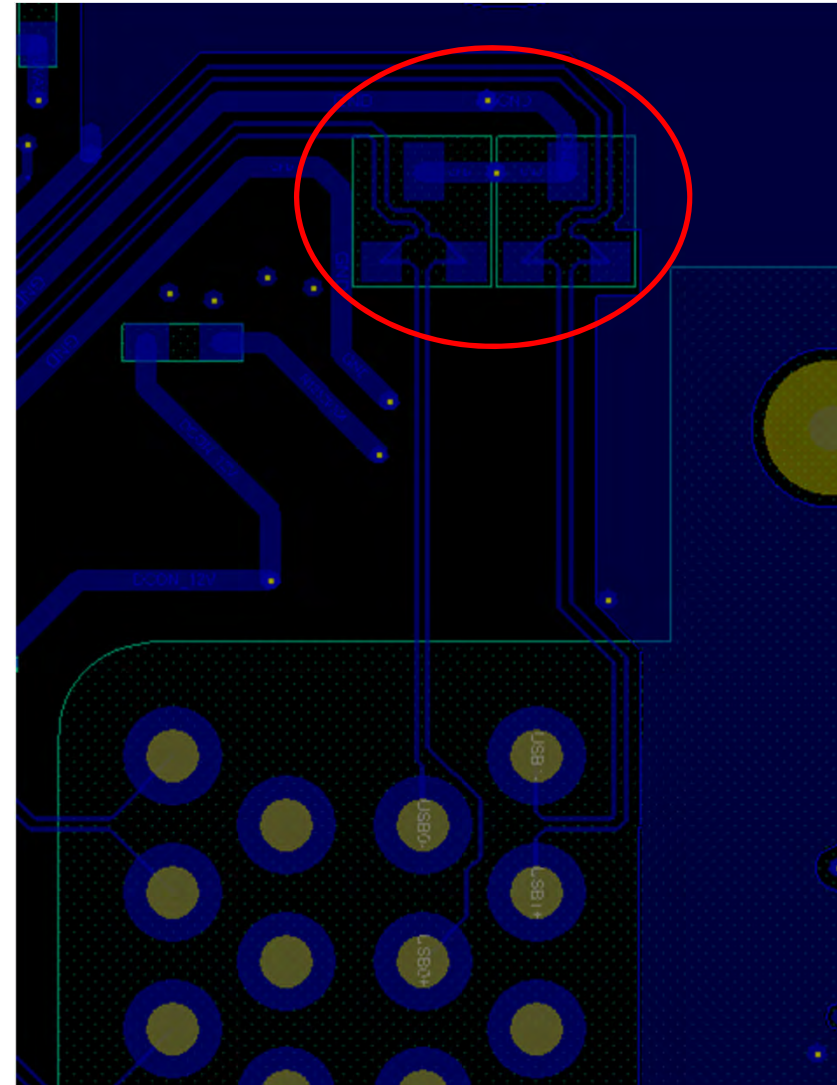
CMS5 – BB CHANGES

1. D1,D2,D7 &D8 (SOT-883) are Replaced with SOT 23-3 Package.

BB PP VERSION

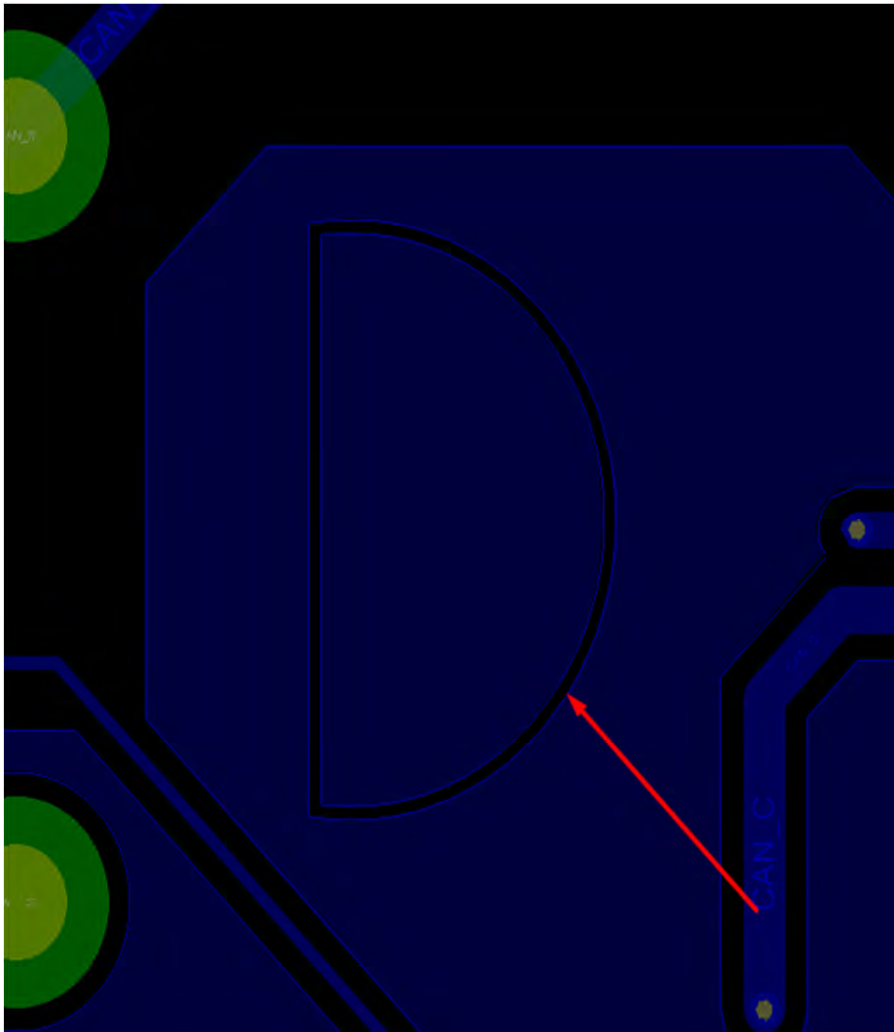


BB MP VERSION

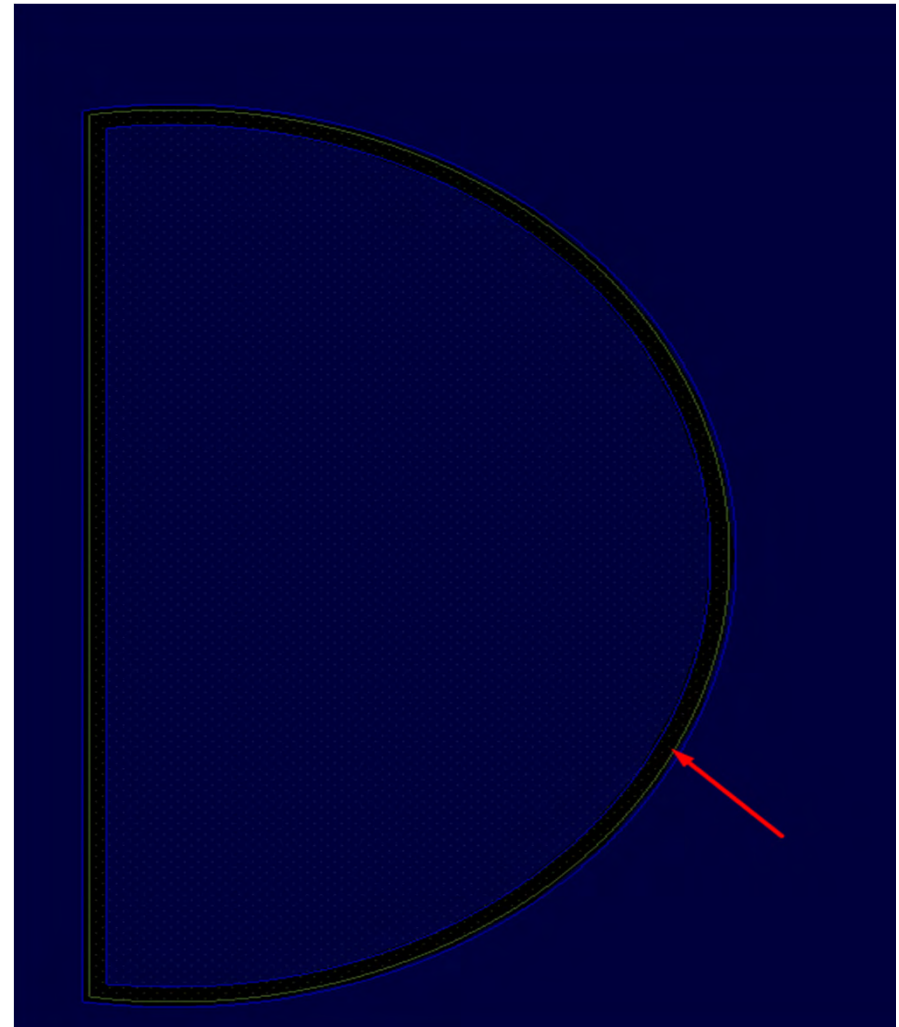


2. Solder Mask Opening for Copper Thieving Pads.

BB PP VERSION



BB MP VERSION



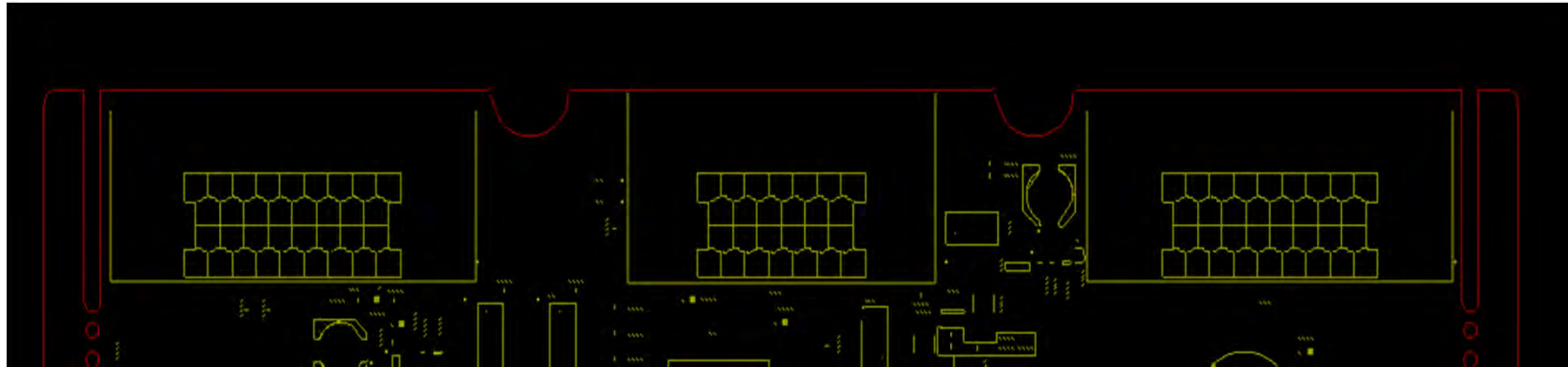
3. PCB Information Updated in Silkscreen and removed from Top and Bottom Copper.

TOP SILKSCREEN LAYER

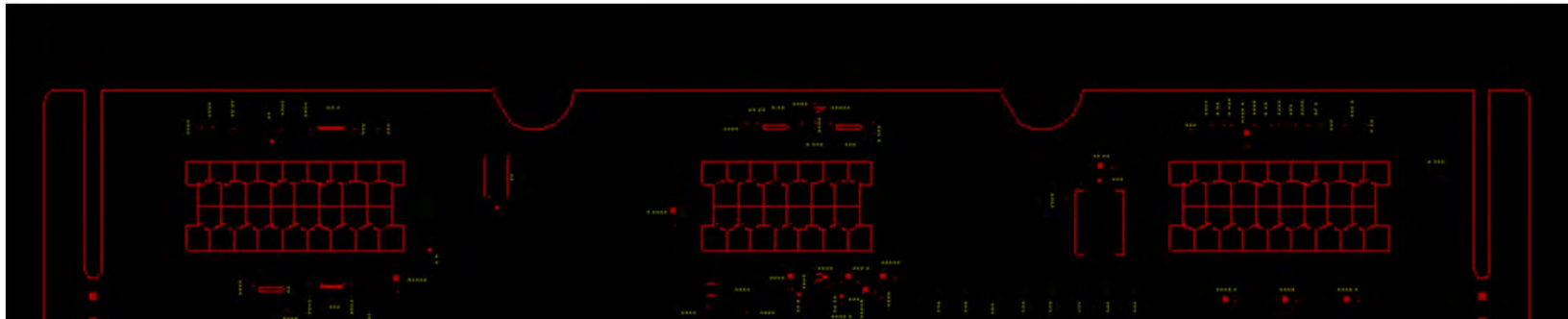


4. Silkscreen for Connectors Updated in bottom side.

BB PP VERSION (silkscreen on top)

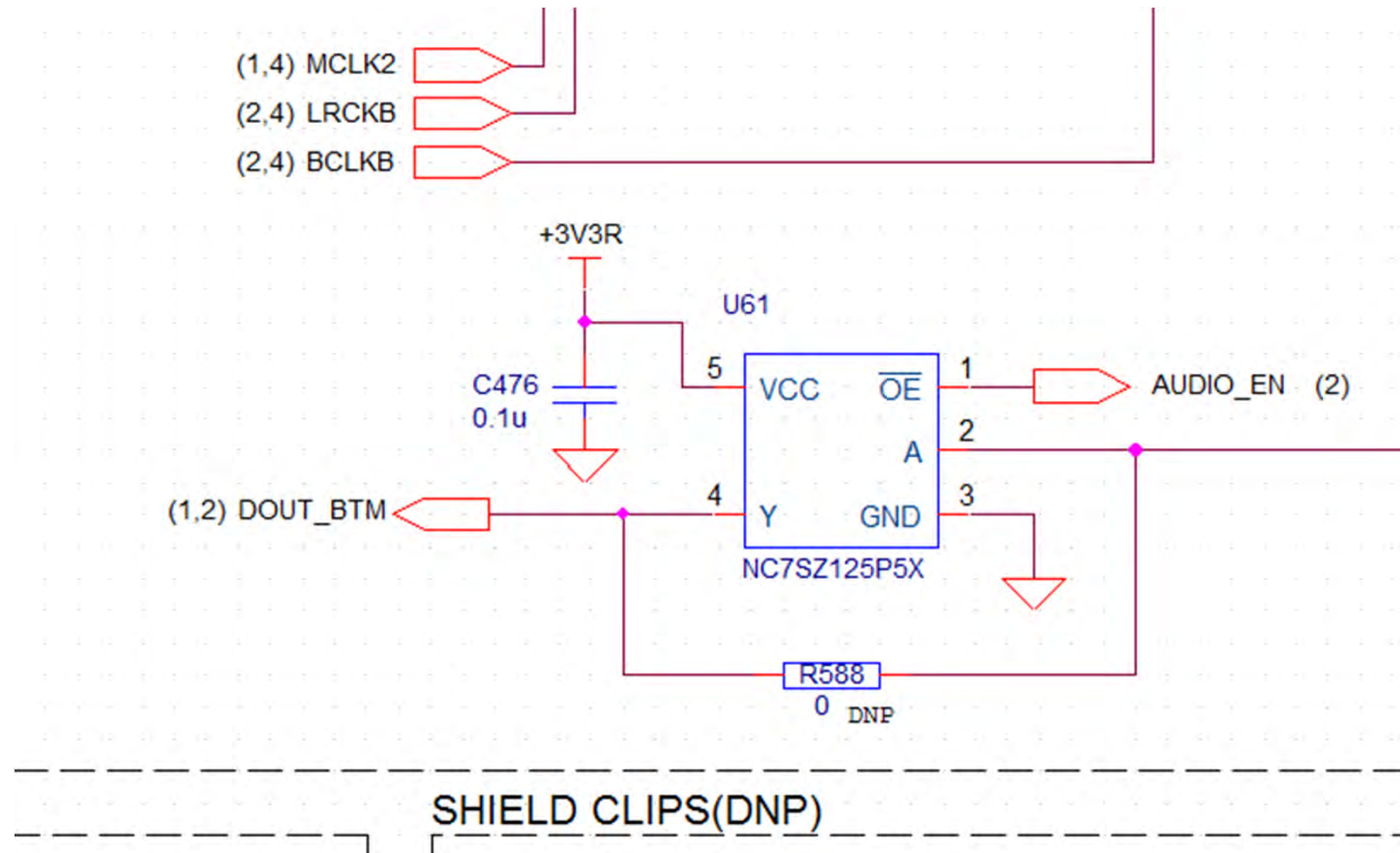


BB MP VERSION (silkscreen on bottom)



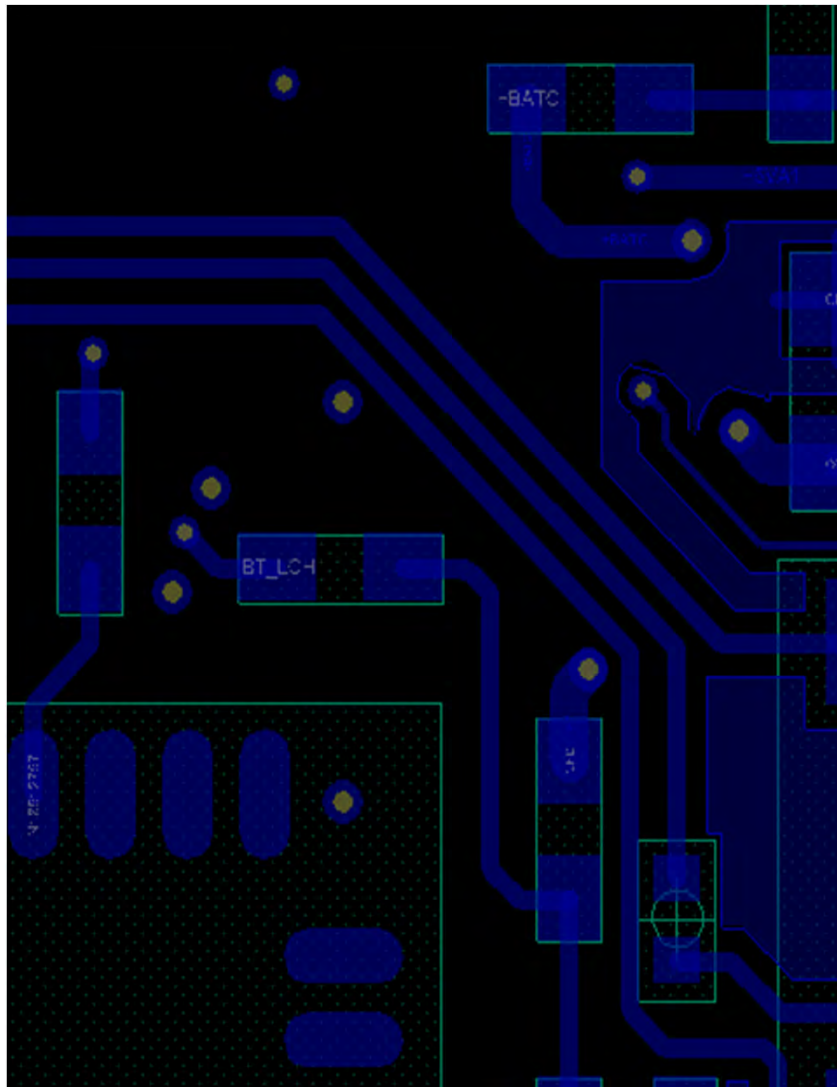
5. Buffer Circuit Added Near BT Module.

BB MP VERSION

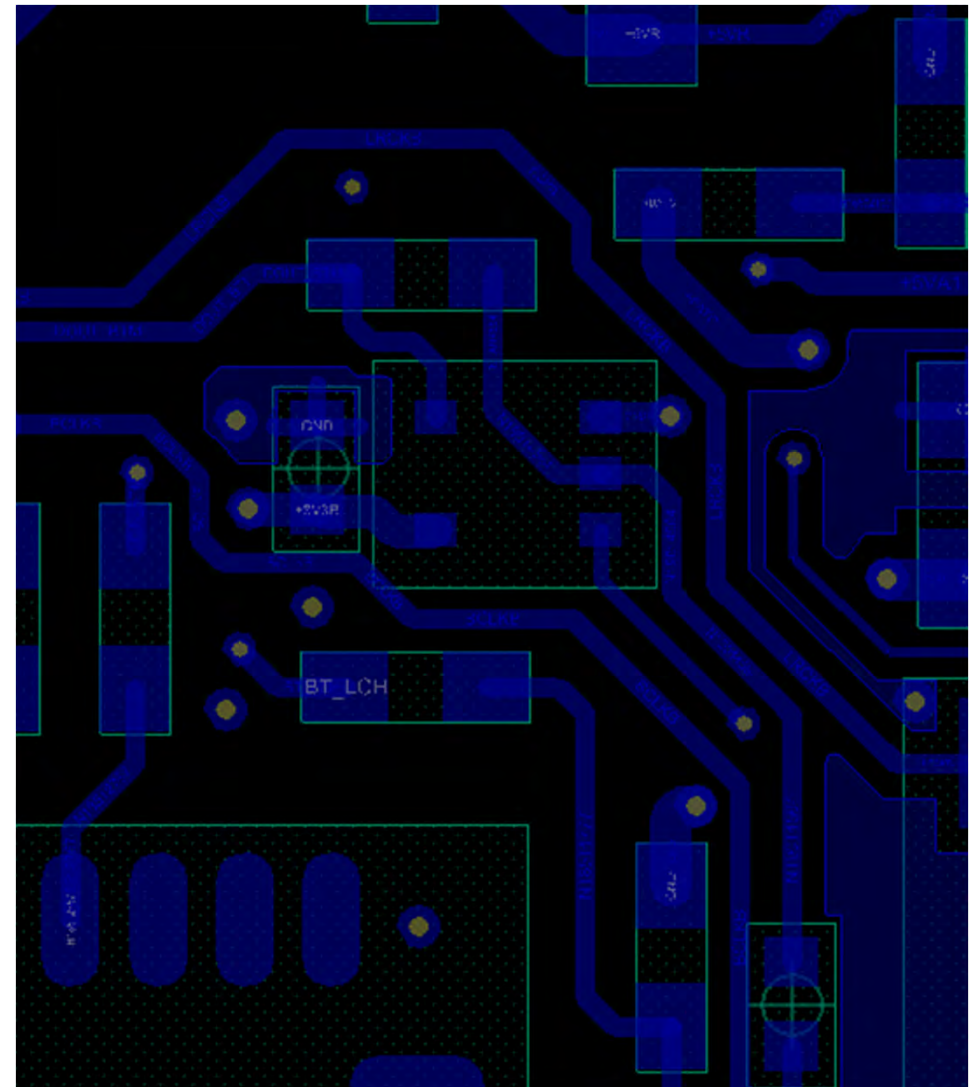


5. Buffer Circuit Added Near BT Module.

BB PP VERSION

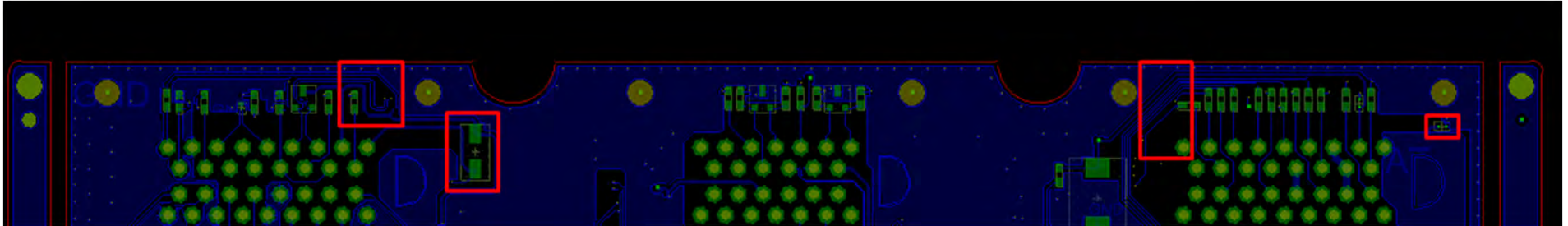


BB MP VERSION

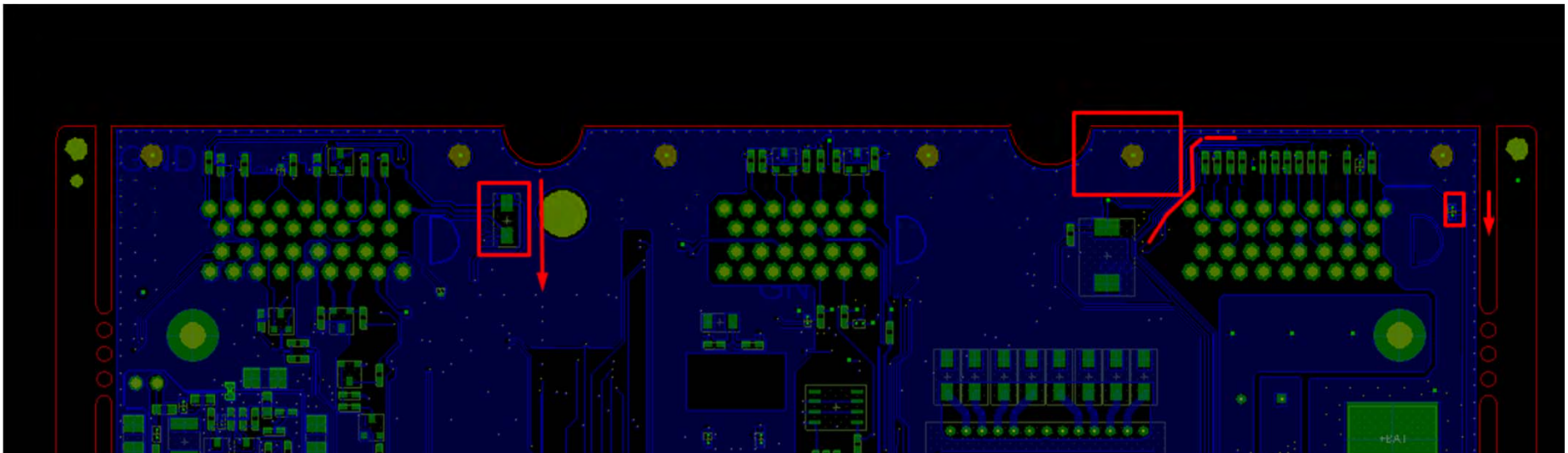


6. CN1,2&3 NPTH Clearance in Solder Side.

BB MP VERSION

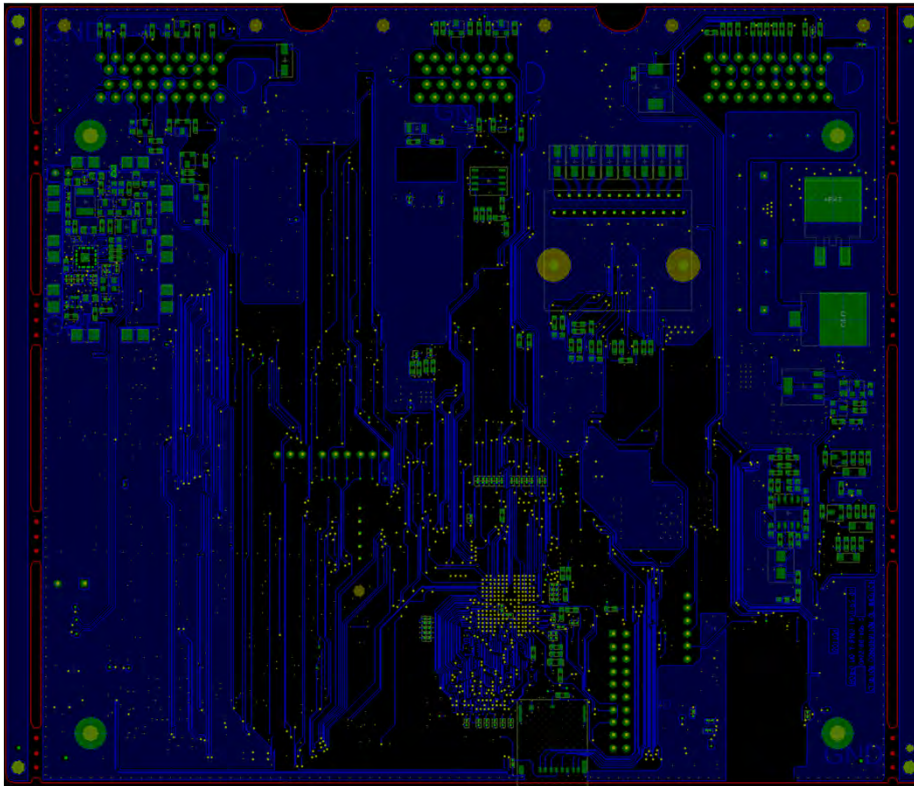


BB PP VERSION

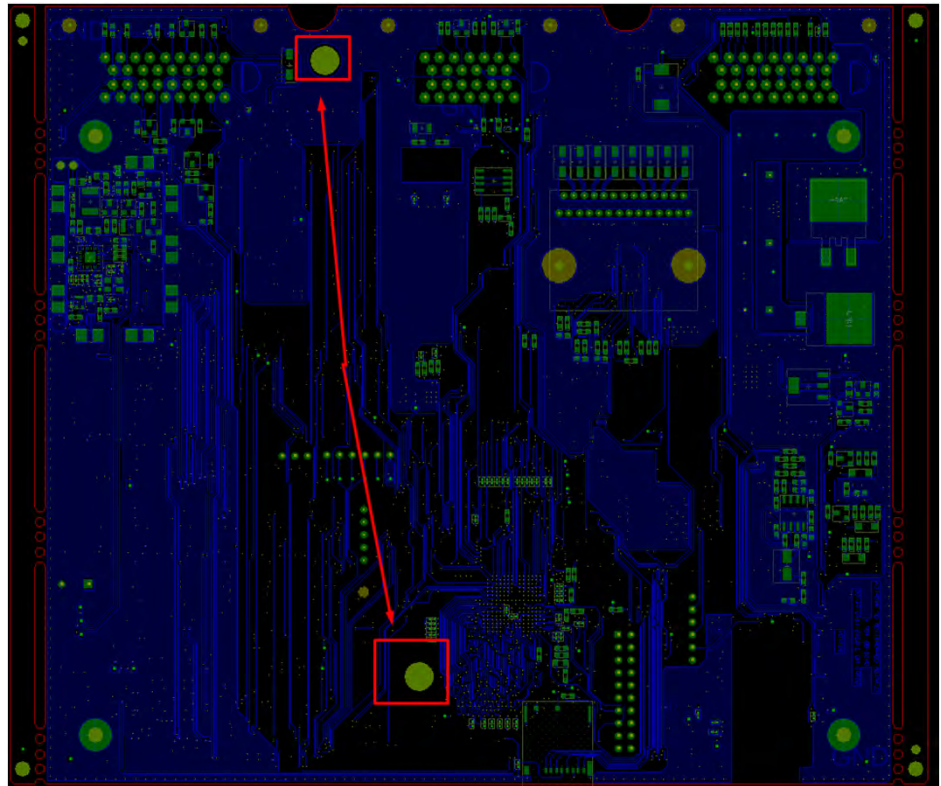


7. Locating Holes added for Assembly Purpose.

BB PP VERSION

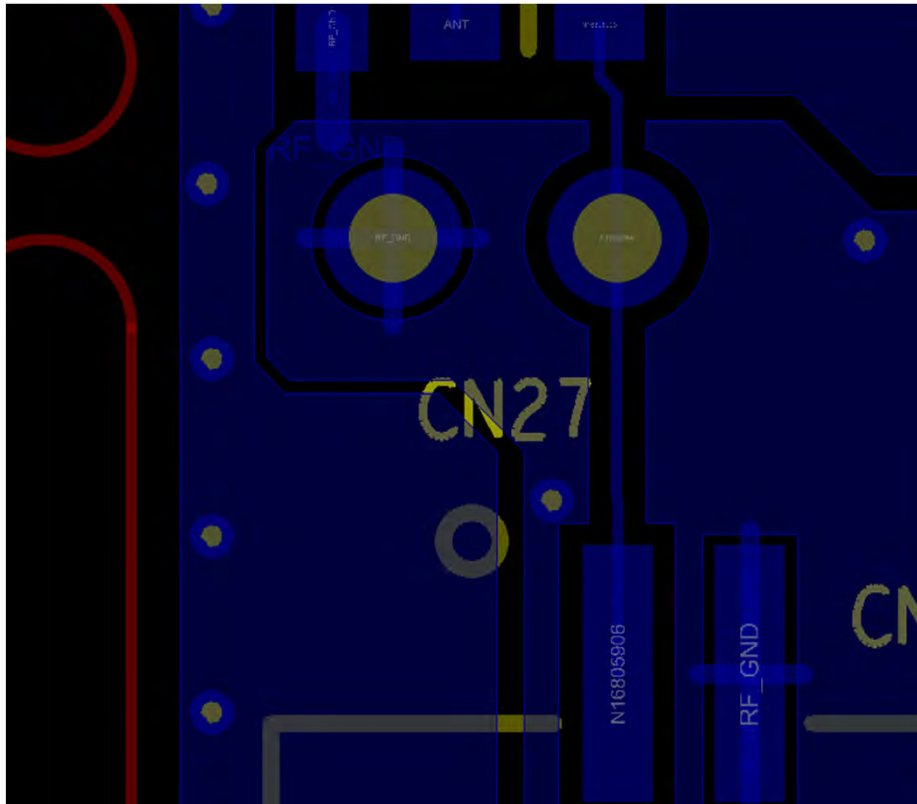


BB MP VERSION

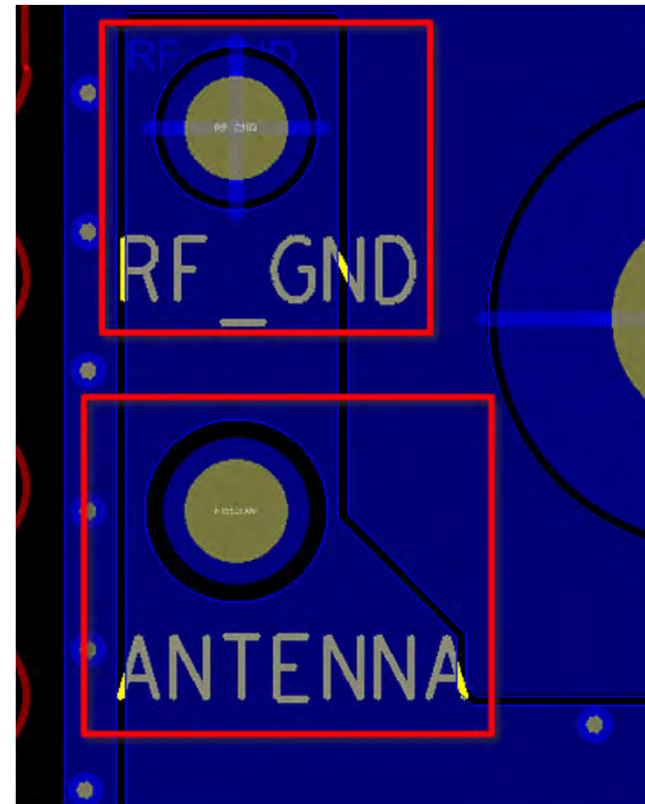


8. Silk Screen Added for Antenna Pins both top and bottom side(Top Side).

BB PP VERSION



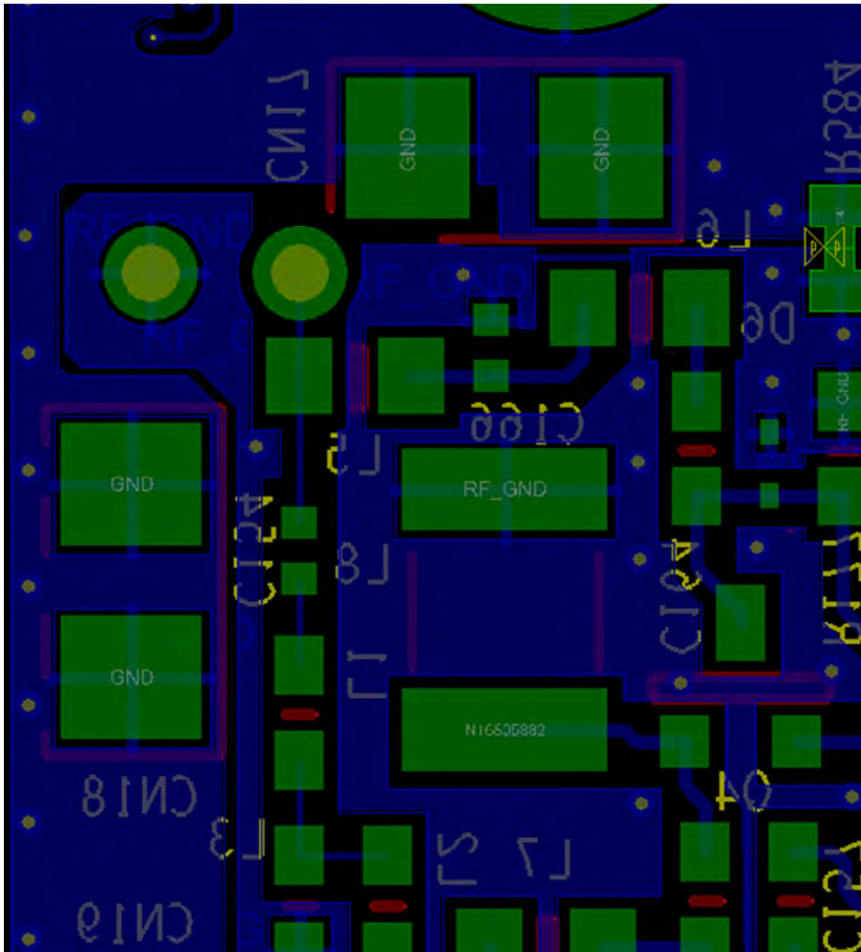
BB MP VERSION



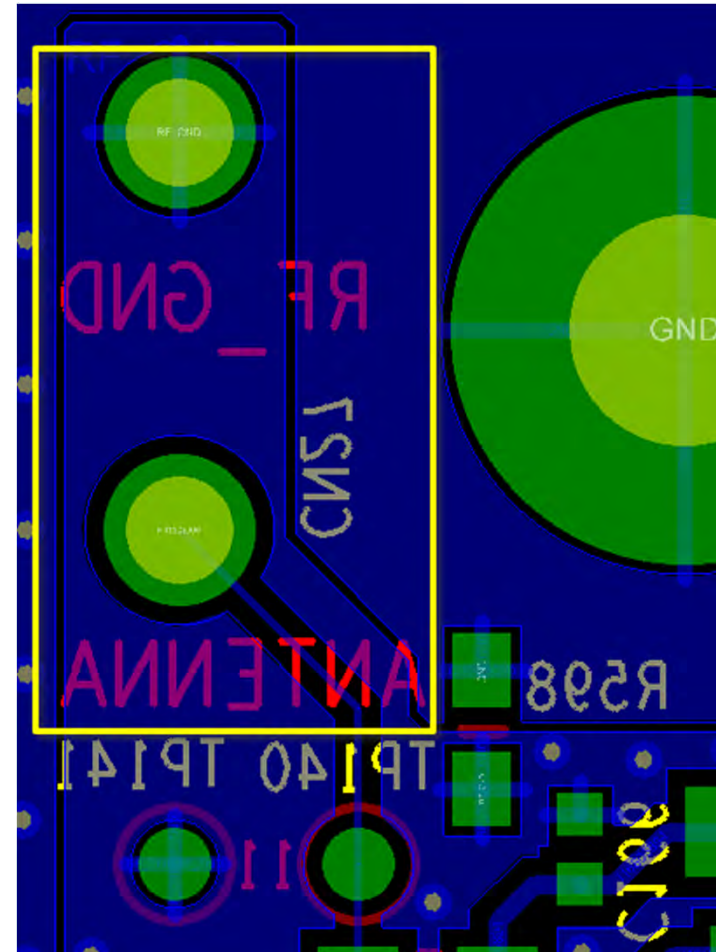
CN17 & CN20 Is removed from Schematic CN27 Is rotated by 90 moved away from L5 to avoid Selective Soldering issue

8. Silk Screen Added for Antenna Pins both top and bottom side(Bottom side).

BB PP VERSION

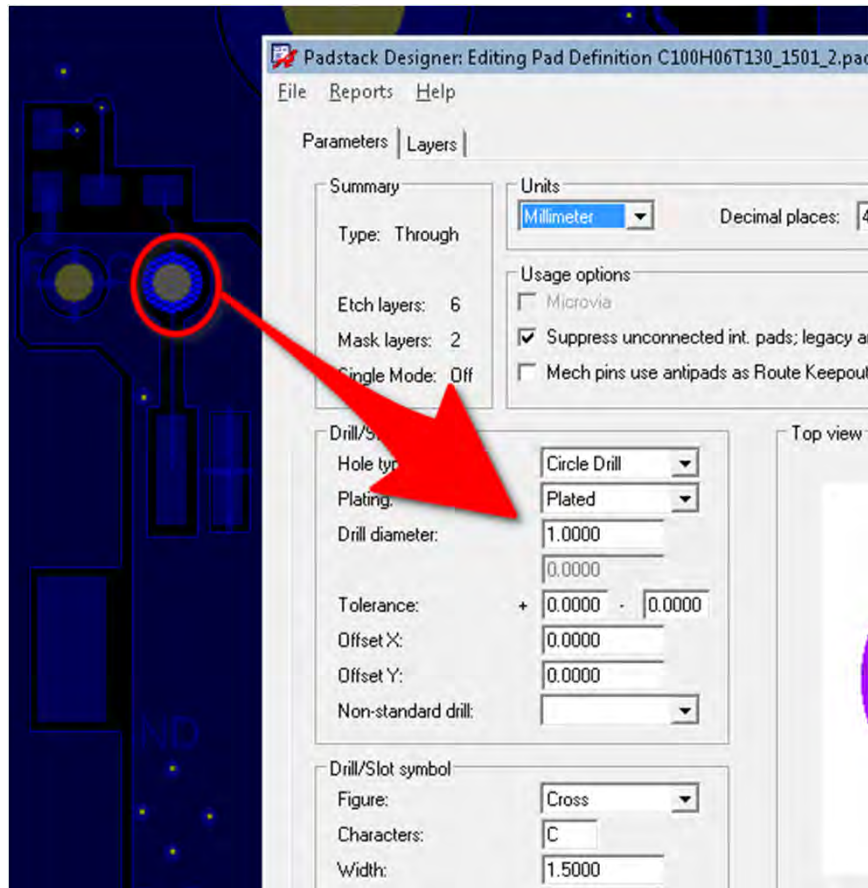


BB MP VERSION

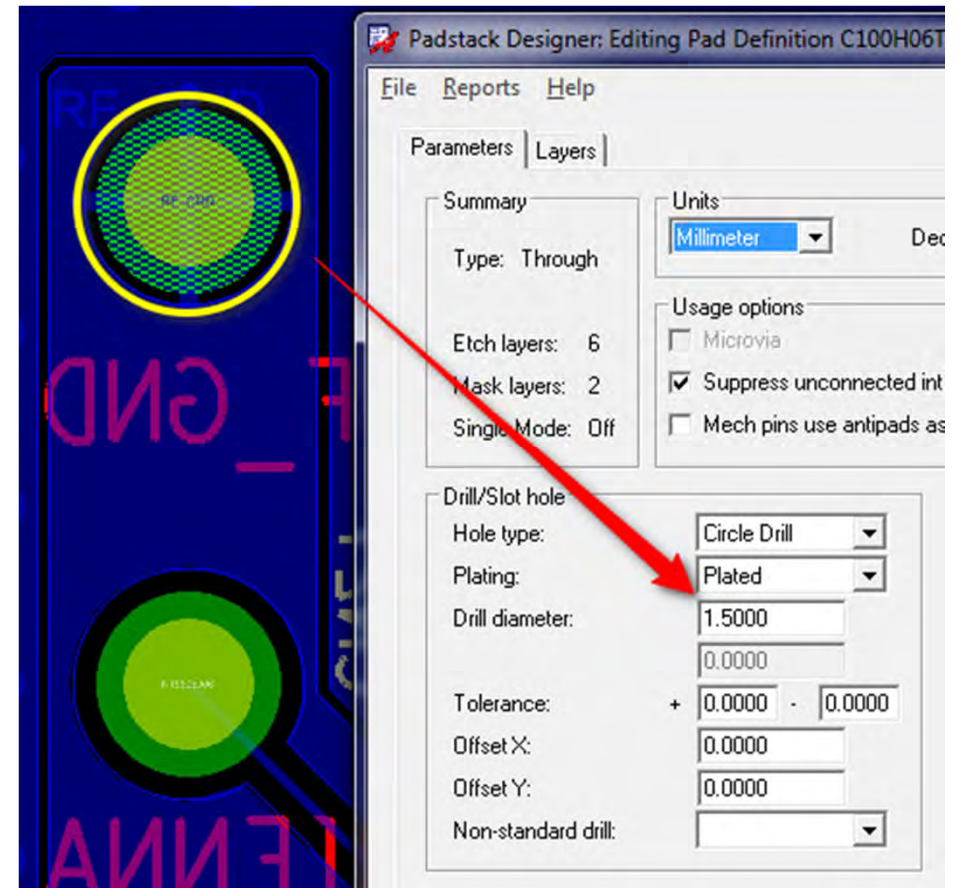


9. Through hole size of the Antenna Pigtail is increased from 1mm to 1.5mm

BB PP VERSION

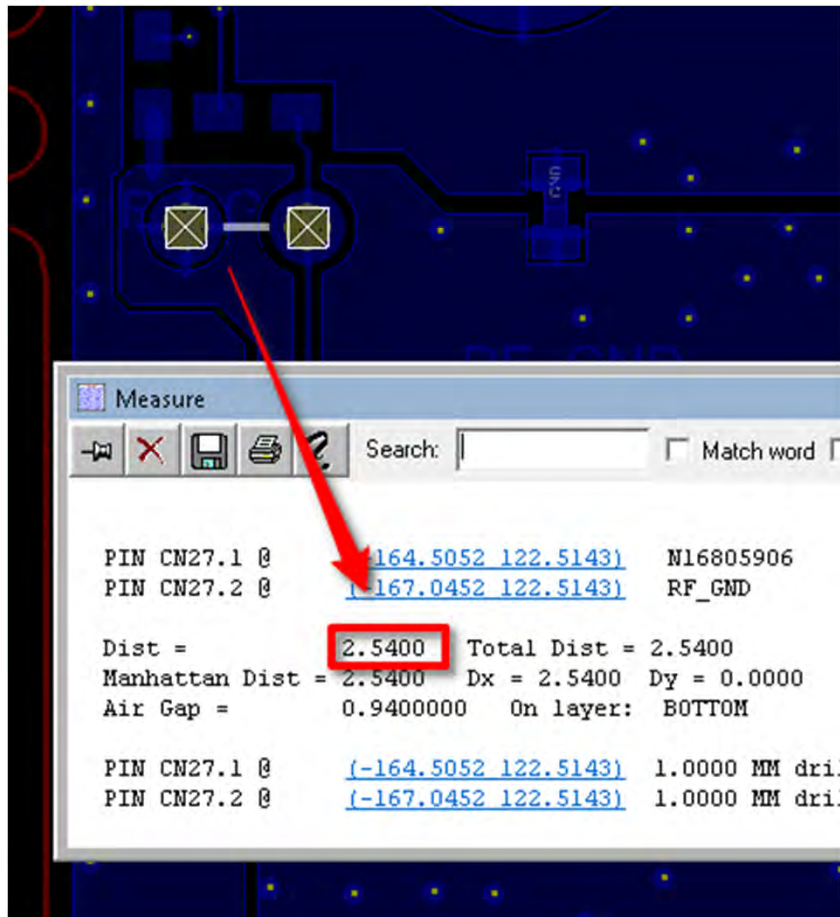


BB MP VERSION

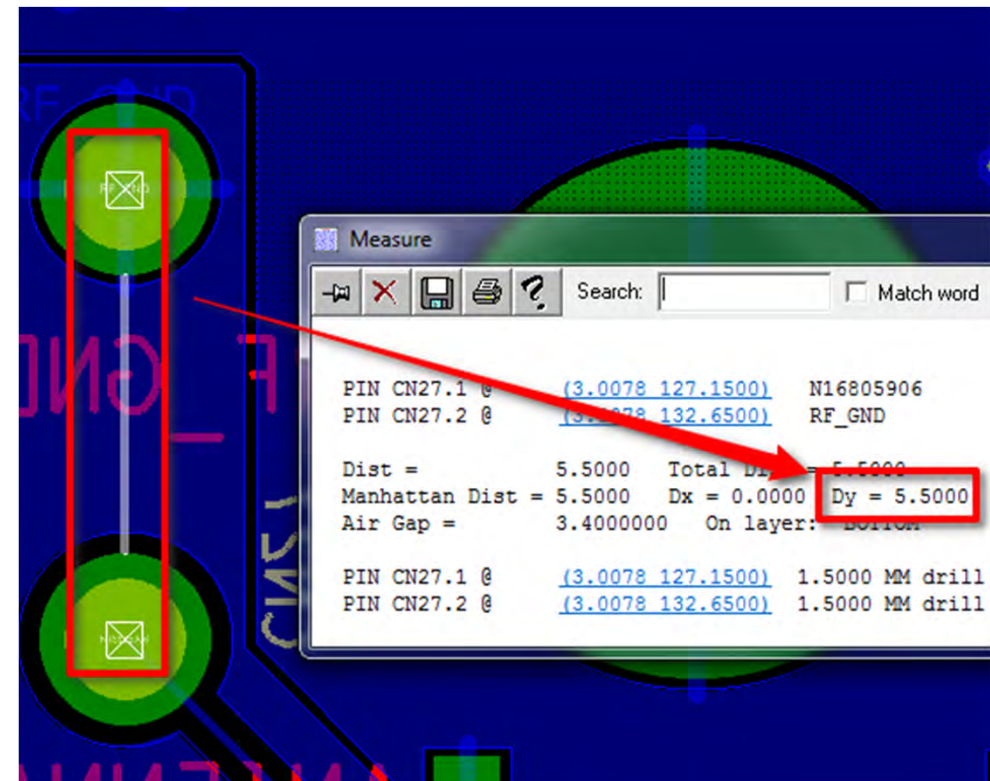


10. Pitch oh through hole Antenna Pigtail is increased from 2.54mm to 5.5 mm

BB PP VERSION

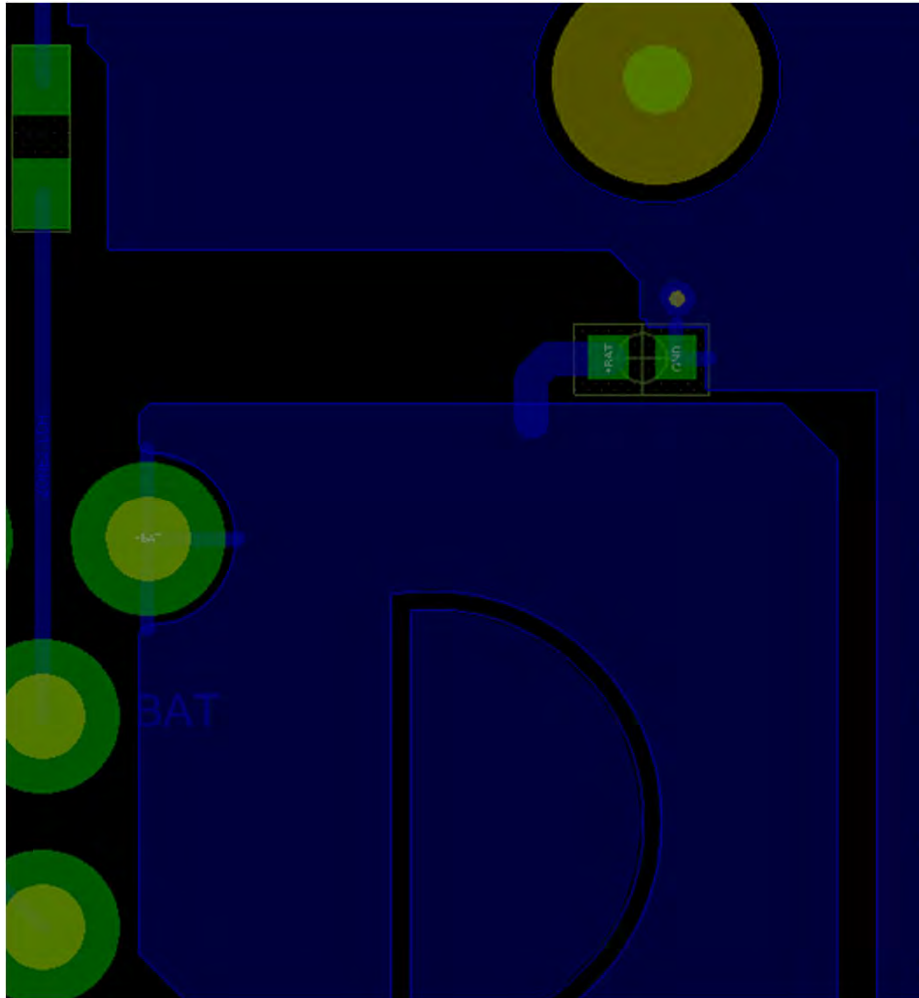


BB MP VERSION

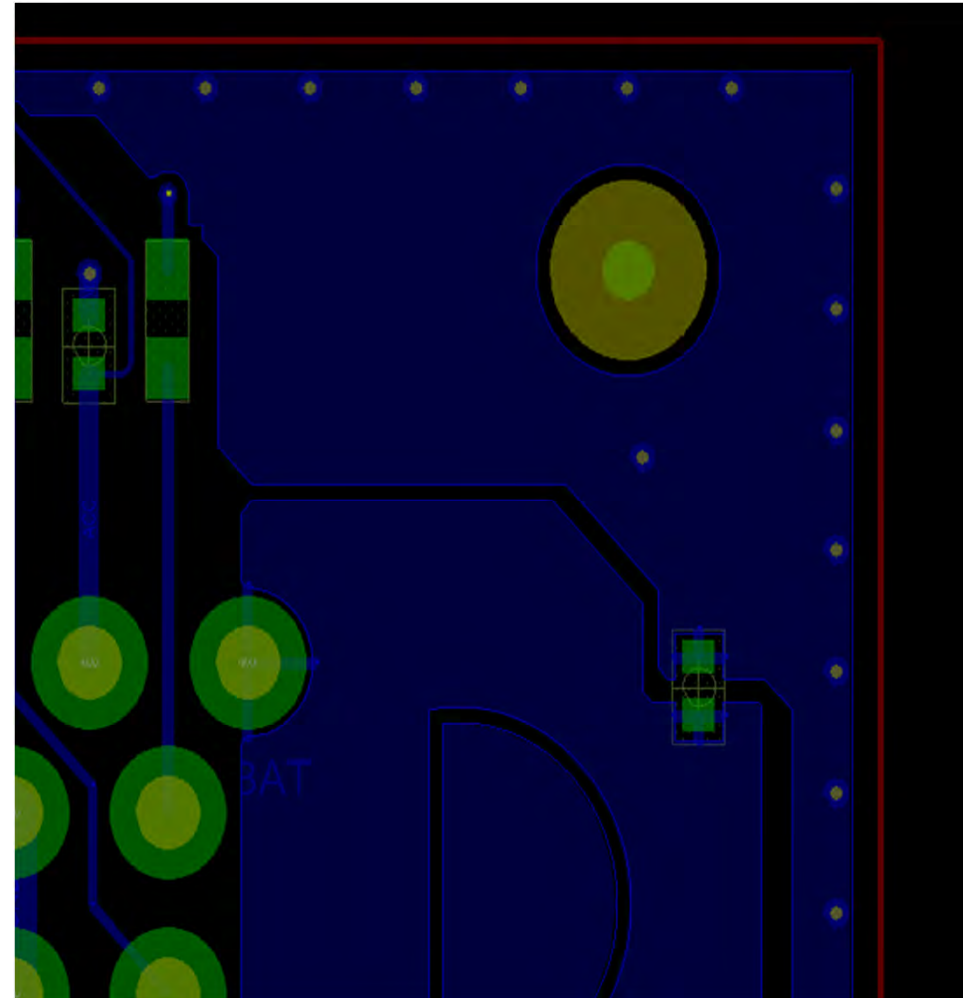


11. C347 Moved Away from CN1 NPTH hole.

BB PP VERSION

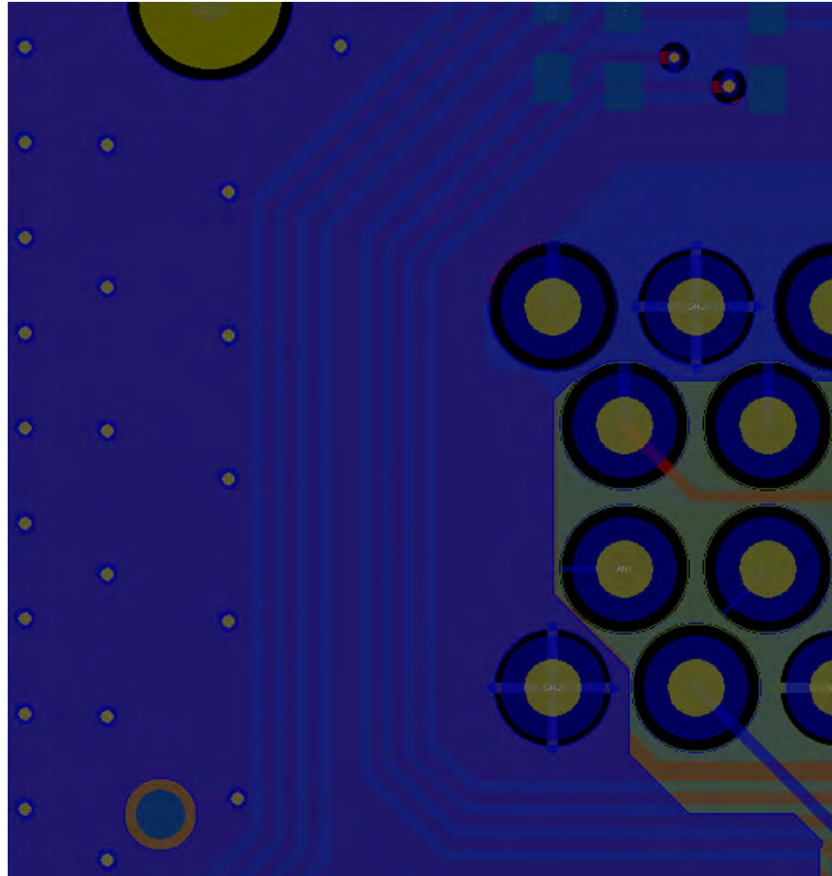


BB MP VERSION

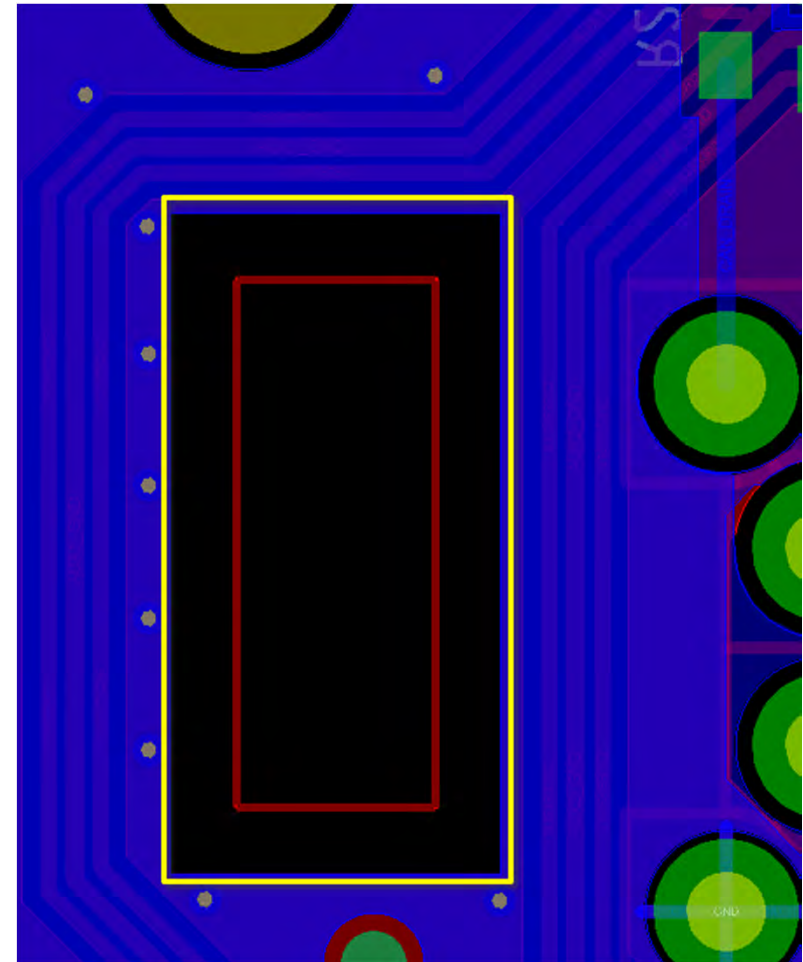


12. PCB slot is Introduced for Antenna Pig tail

BB PP VERSION

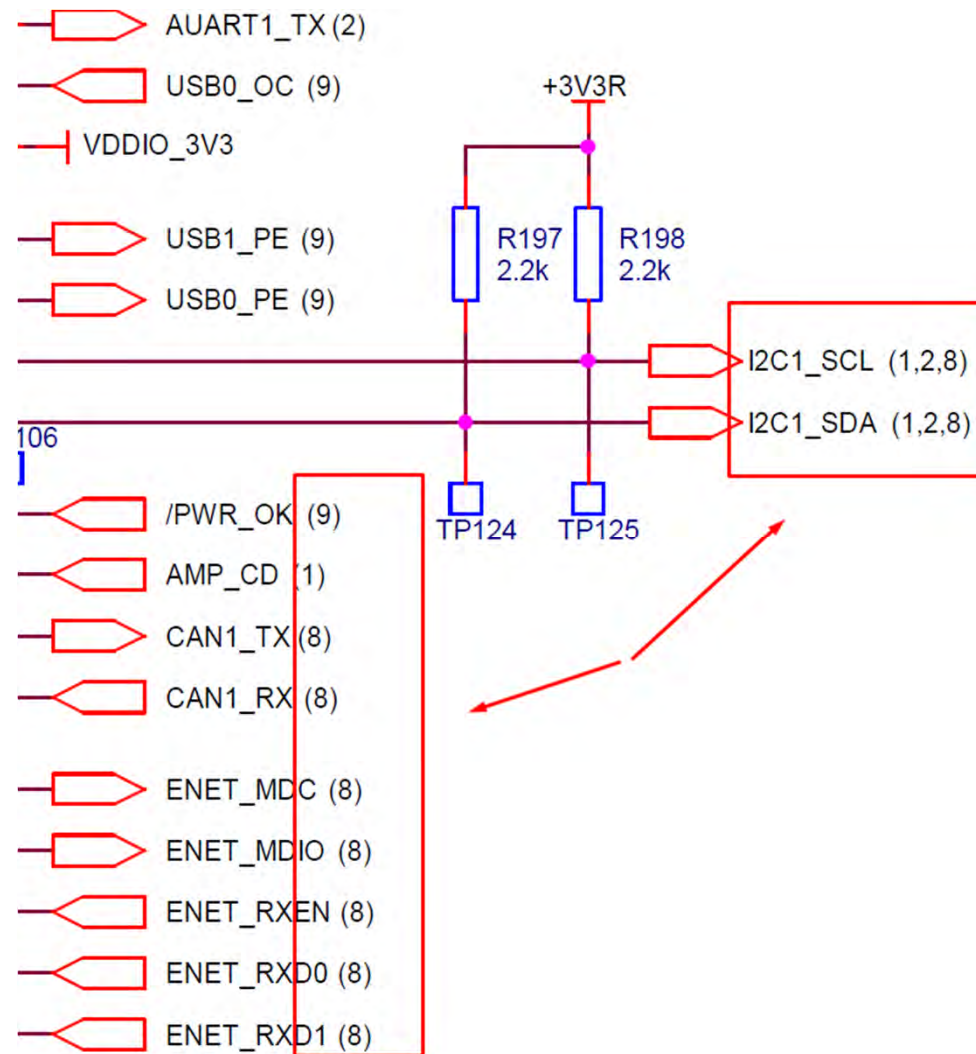


BB MP VERSION



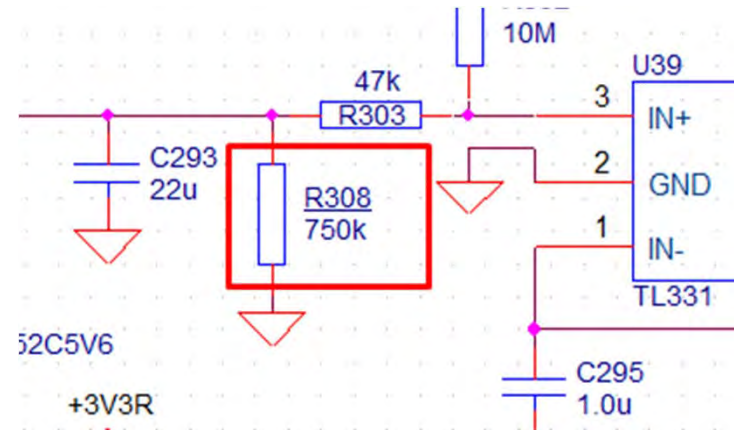
12. Inter sheet Reference for Off Page Connector Pins.

BB MP VERSION



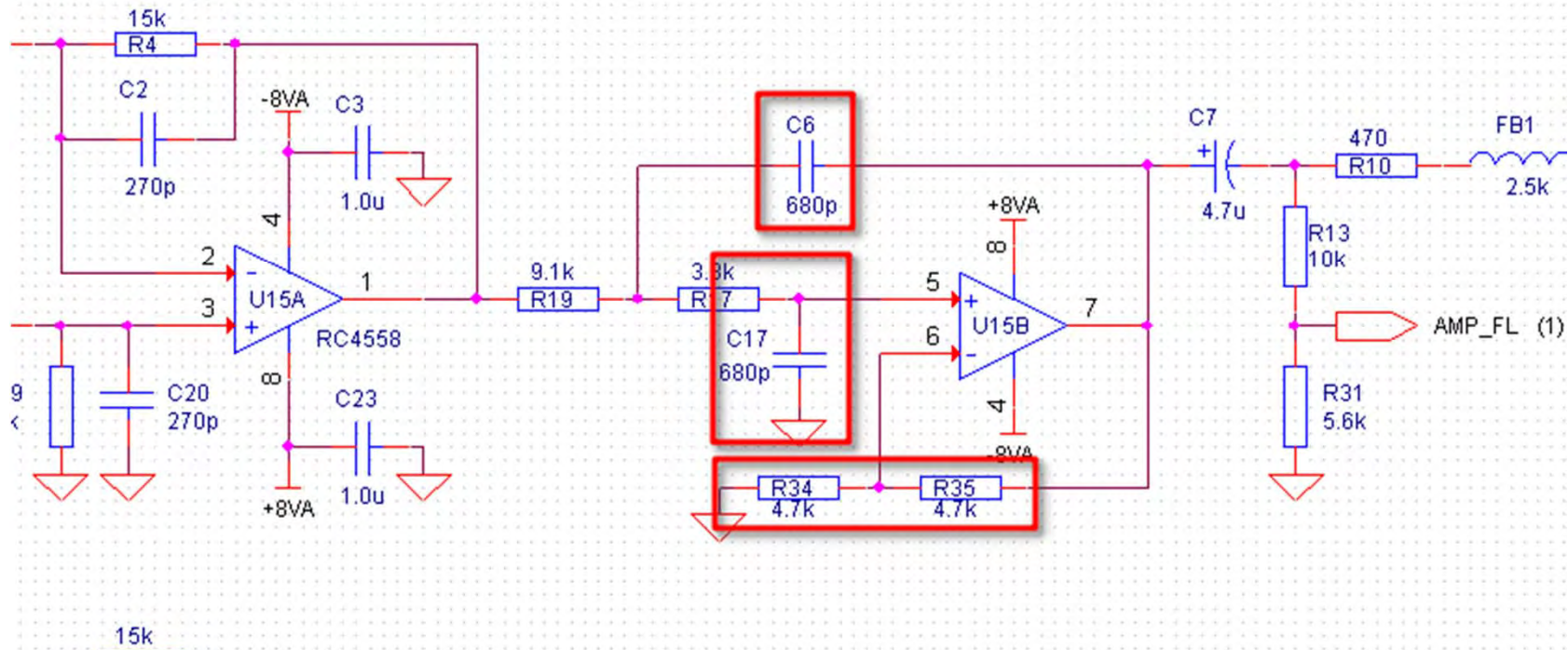
13. Schematic Changes(BOM Change).

Power down timing resistor changed to 750Kohm



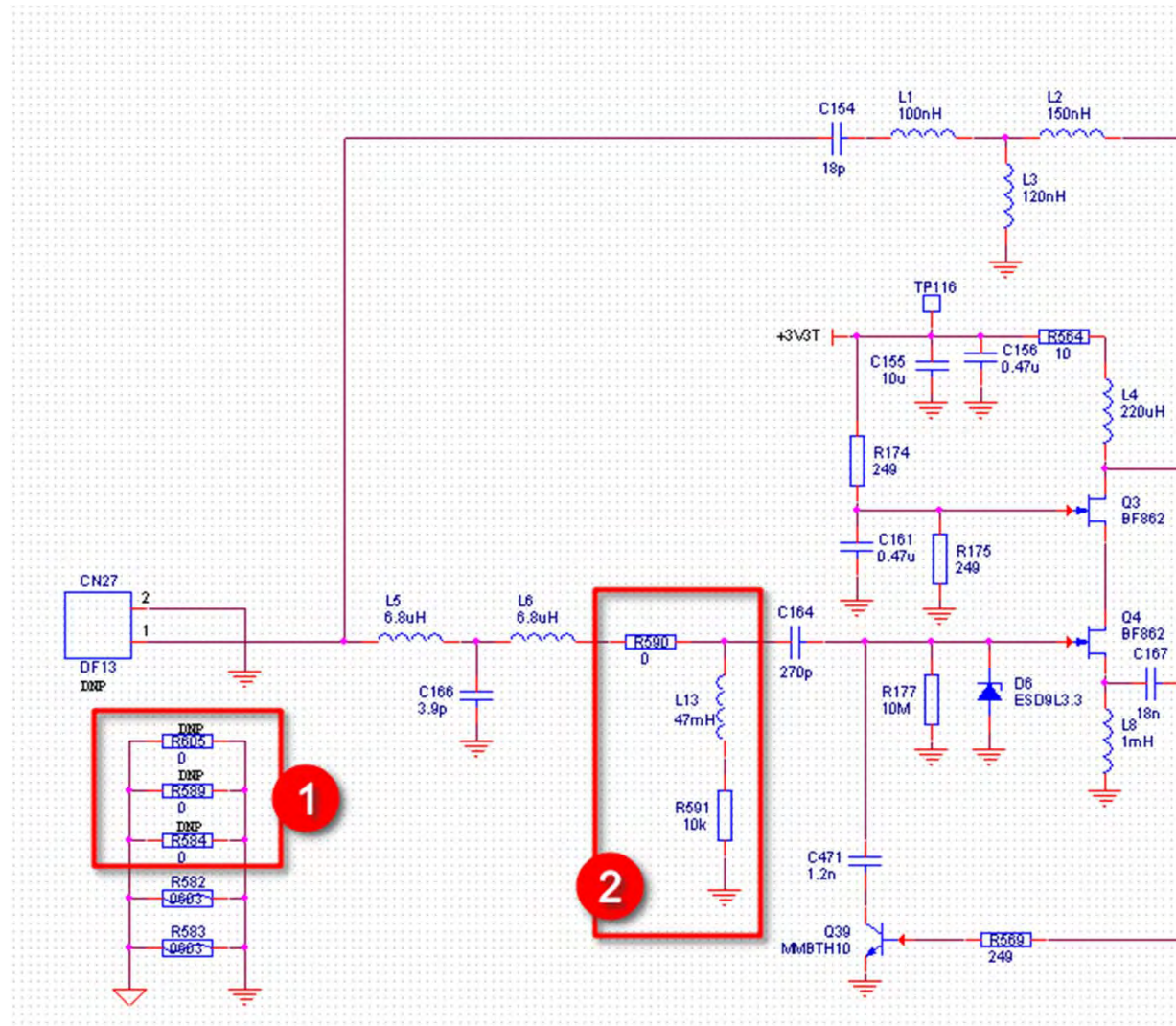
14. Schematic Changes(BOM Change).

LOW PASS FILTER SECTION RESISTOR AND CAPACITOR VALUE CHANGED



Resistors (R34,R35,R70, R71,R100, R101,R122, R123,R36, R37,R72, R73,R102, R103,R434, R435)changed from(5.6K&3K) to 4.7K
Capacitors (C6, C17,C30,C41,C53, C65,C73, C79,C8, C21,C33, C43,C57, C66,C368, C410) changed from (820P&470P) to 680P

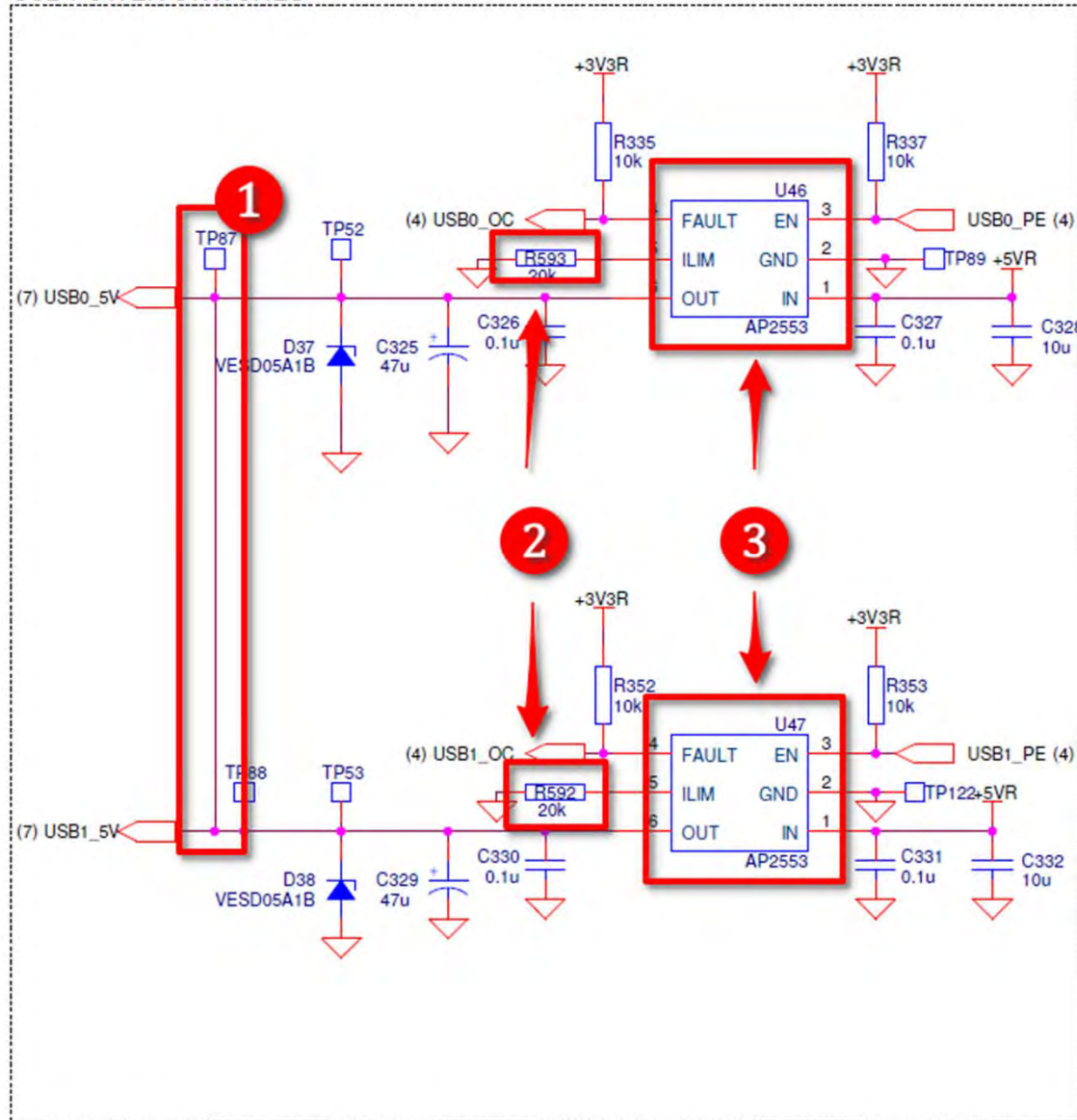
15. Schematic Changes. AM/FM/WB TUNER



1. 0 Ohm resistor are newly added (R584,R589,R605).
2. Main strap circuit added newly.
3. SMD connector CN20 is removed from the design
4. R584 Resistor direct short removed.
5. R577 & R578 is removed from the design.
6. Shield clip CN17 is removed from the design.

17. Schematic Changes. USB POWER SWITCHES

USB POWER SWITCHES

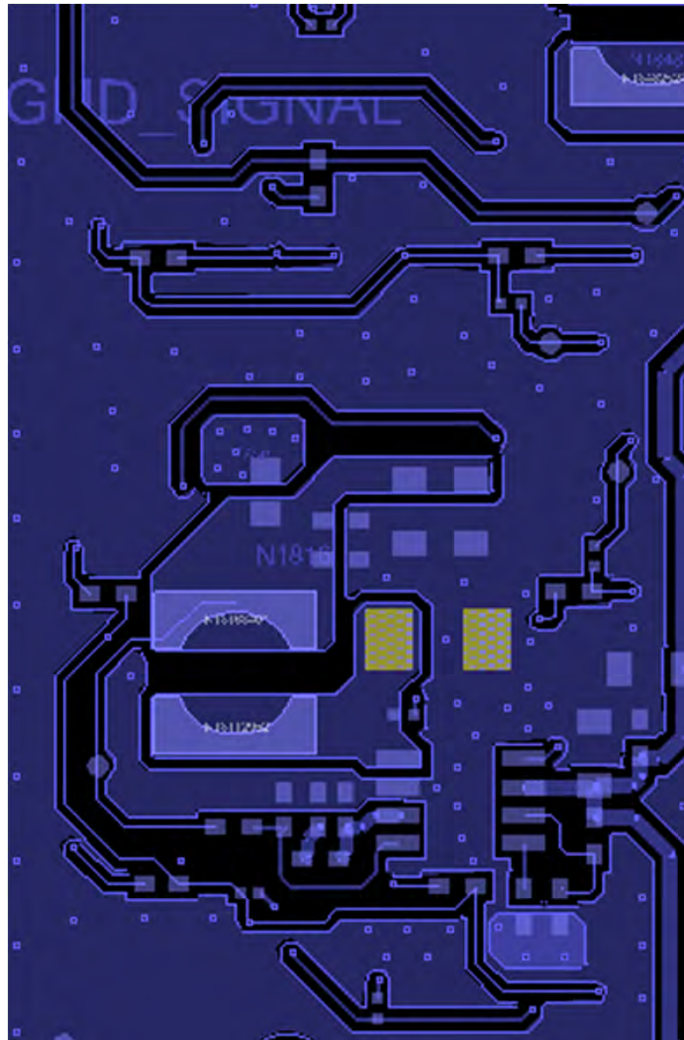


1. Both USB Supplies Shorted.
2. R593 & R592 is newly added
3. U46 & U47 Part is changed from AP2191 To AP2553.

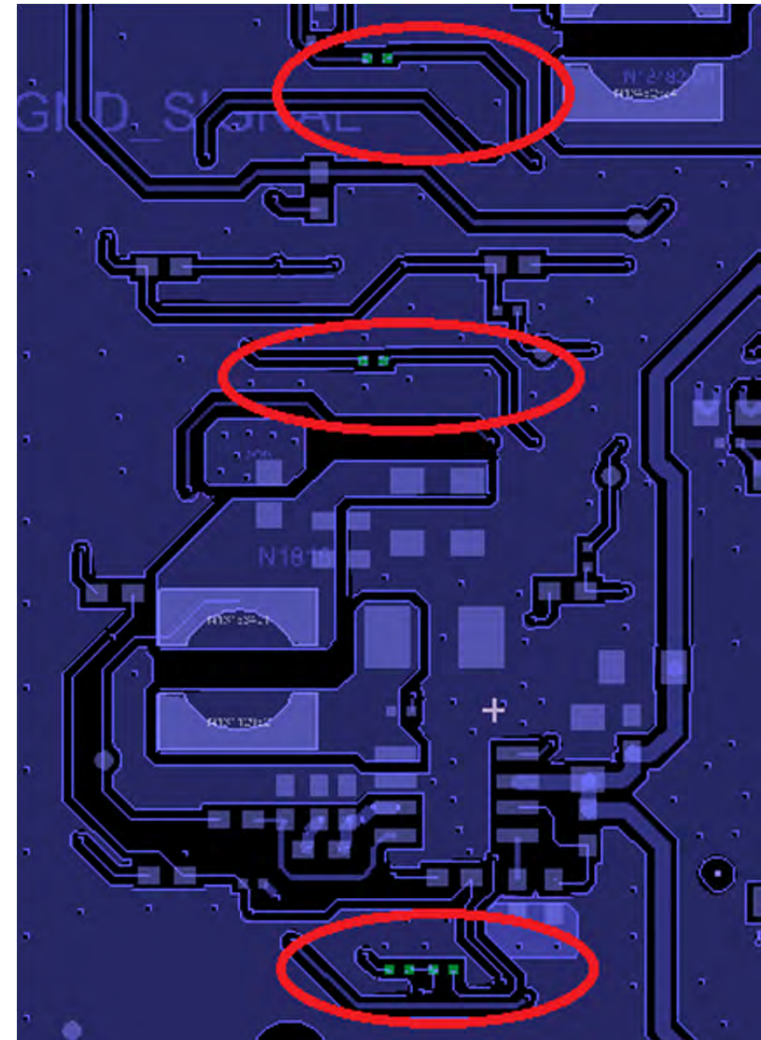
CMS5 – DC CHANGES

1. 4 Series resistors added accords to TOP switch LEDs to reduce the Current and brightness. (Resistor Values to be finalized to

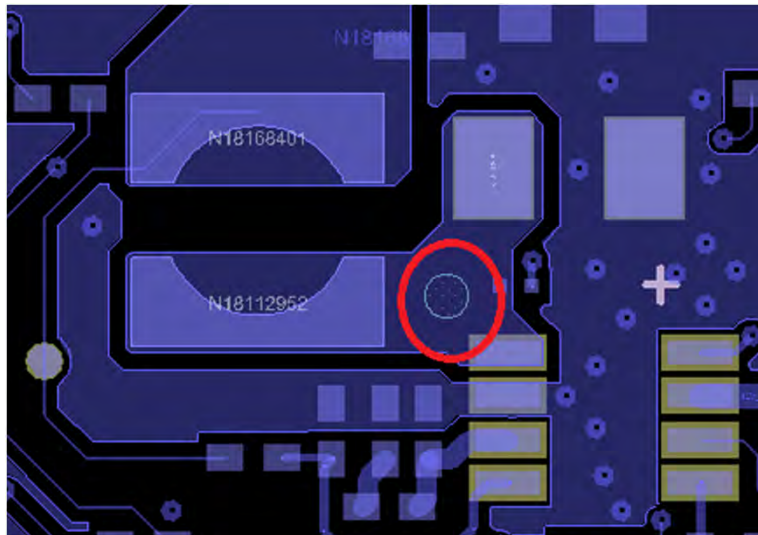
BB PP VERSION



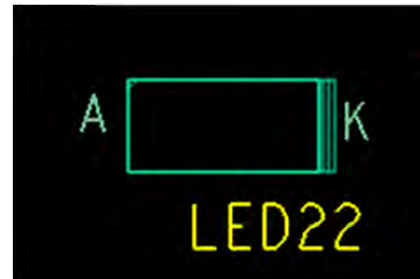
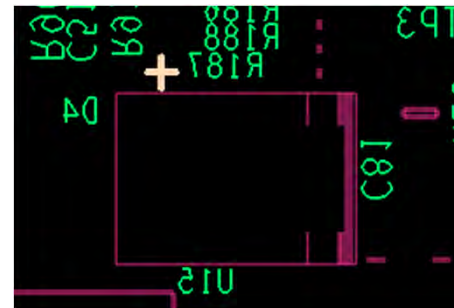
MP VERSION



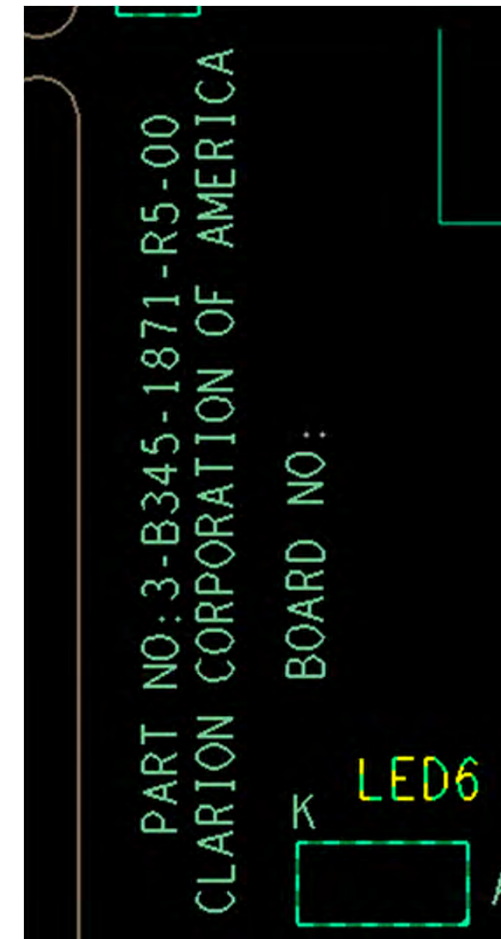
Test-point added at
switching Node of 3V3
Power Supply. (No
copper Change)



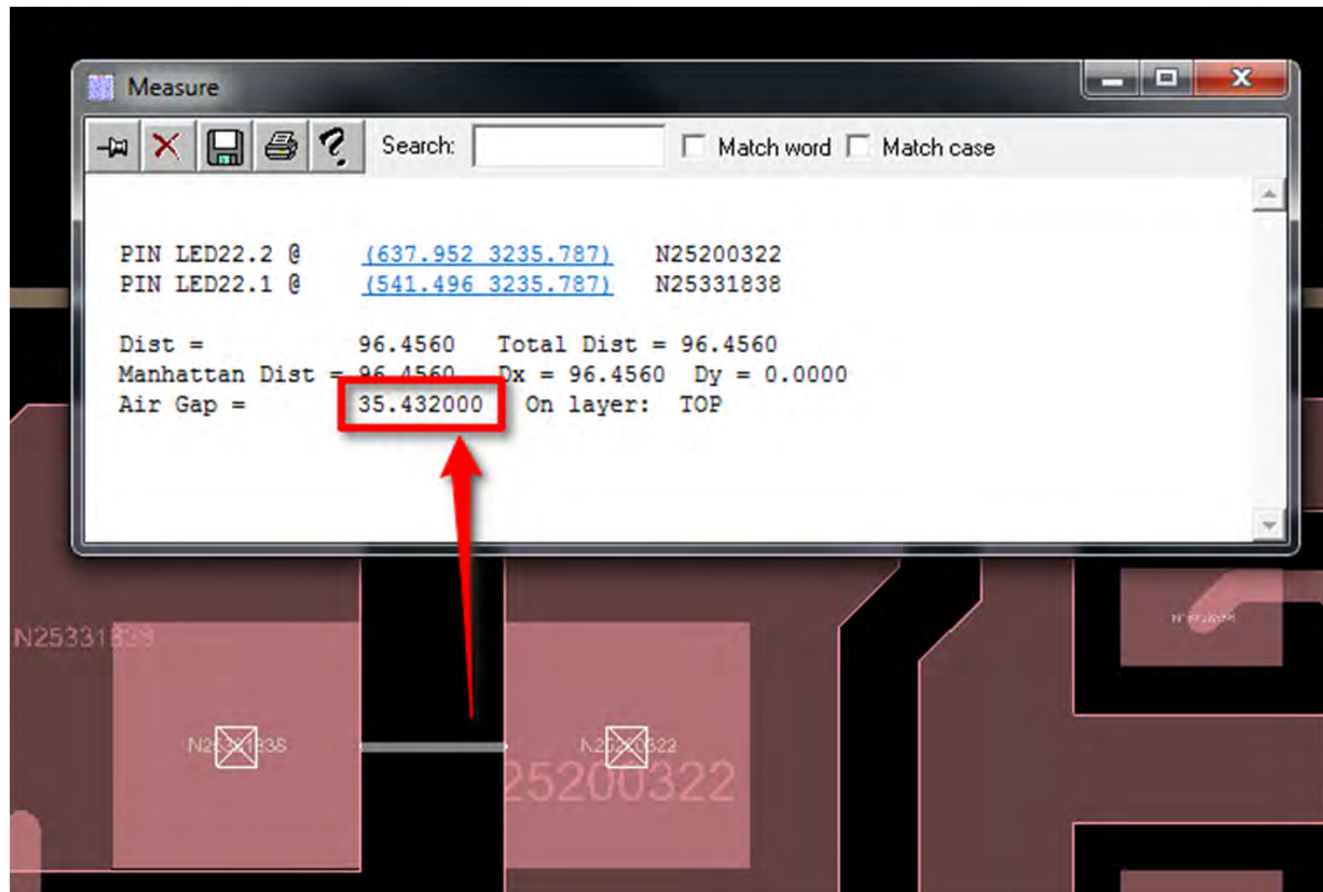
Diode and LED Silk
screen modified
(No copper
Change)



Rev No Updated
(No copper
Change)



LED foot print updated to accommodate various footprints



Panel changed to have V-cut for side trips as per Skypine request

