



SPL912N2R4 (PCI version)
Bluetooth 2.0 EDR and Wifi 802.11 b/g
Combo Module

Quick Install Guide





A. Before installation

Requirement environments:

- Windows Vista / XP / 2000 sp3 above
- A minimum of 5 MB of available hard disk space for installing the drive
- An 802.11a, 802.11b, or 802.11g Access Point (for Infrastructure Mode) or another Wireless CardBus Adapter (for Ad-Hoc Mode)
- One empty Available PCI slot
- CD-ROM Drive

B. Package Contents Check

- ✓ SPL912N2R4 PCI Adapter x 1
 - ◇ Software CD x 1 include
 - ◆ User Manual
 - ◆ IVT BlueSoleil Bluetooth software and driver
 - ◆ 3DSP WLAN windows software and driver
 - ◇ This Quick Setup Guide x 1
 - ◇ Warranty Card x 1

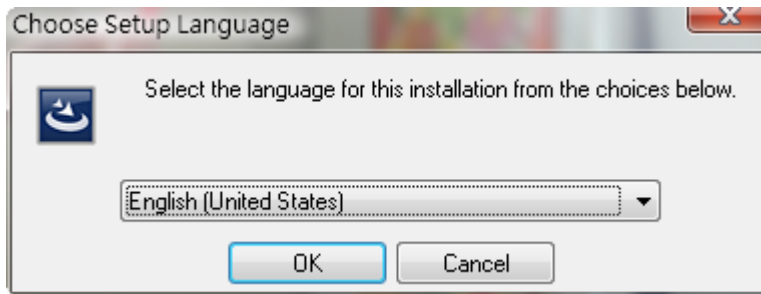
Please informs your dealer if there are any missing or damaged parts.

1. Install driver software for windows

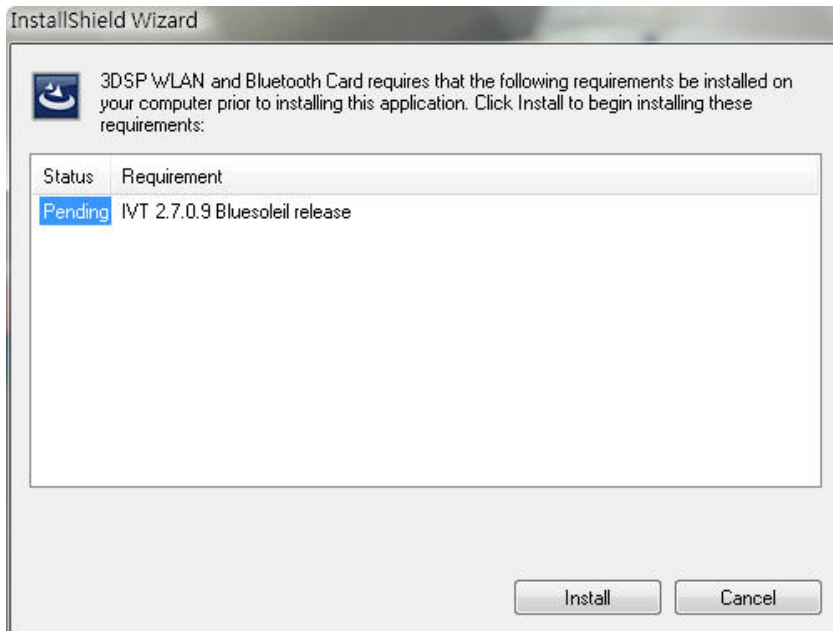
1. Insert the Installation Software CD into CD-ROM drive. If the Auto-Run function of CD-ROM is disabled, you can utilize the Windows Explorer to browse CD content and run **Setup.exe** manually.

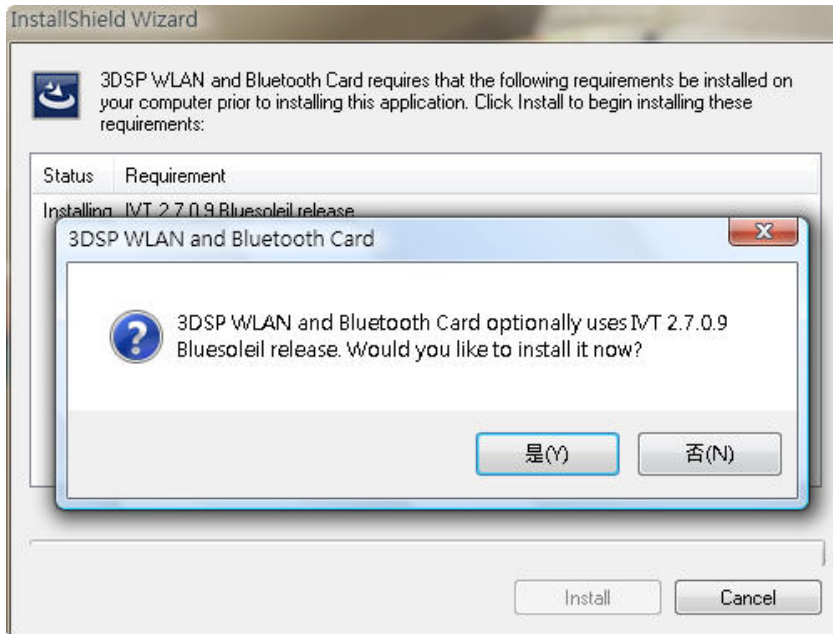
If the Auto-Run function of CD-ROM is enabled (in Windows, the default setting of this function is usually enabled), then a CD menu will appear automatically.

2. Select the Language you want to installation from the combo box, and then press the “OK” button to continue.

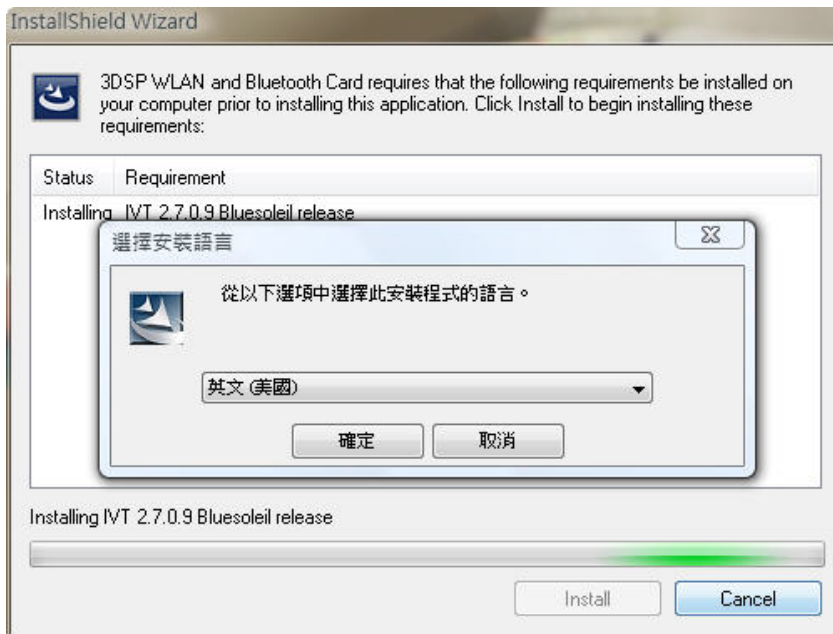


3. The system will initial installation program. Before install 3DSP Wireless driver, the installation program require install IVT BlueSoleil first. Please press the “Install” button start install BlueSoleil first and continue.

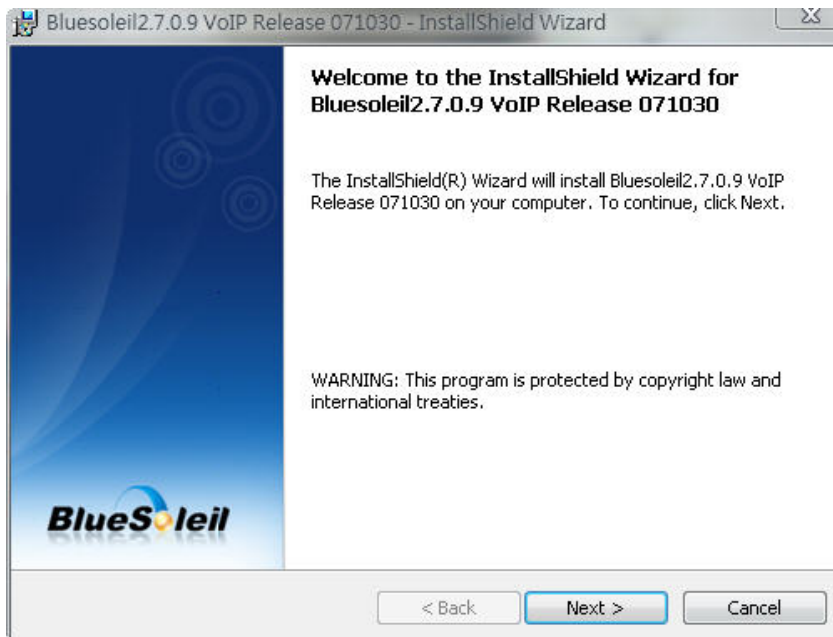




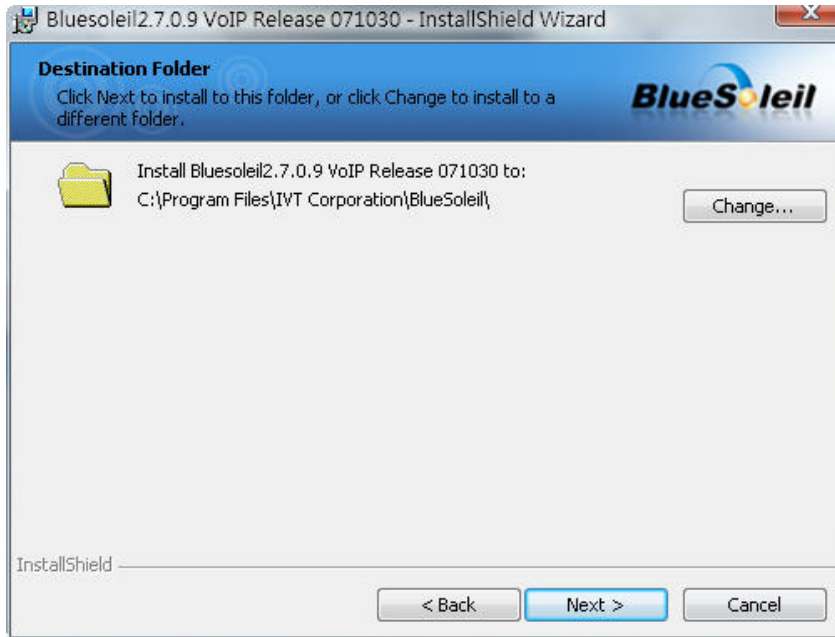
4. Select the Language you want to installation from the combo box, and then press the “OK” button to continue.



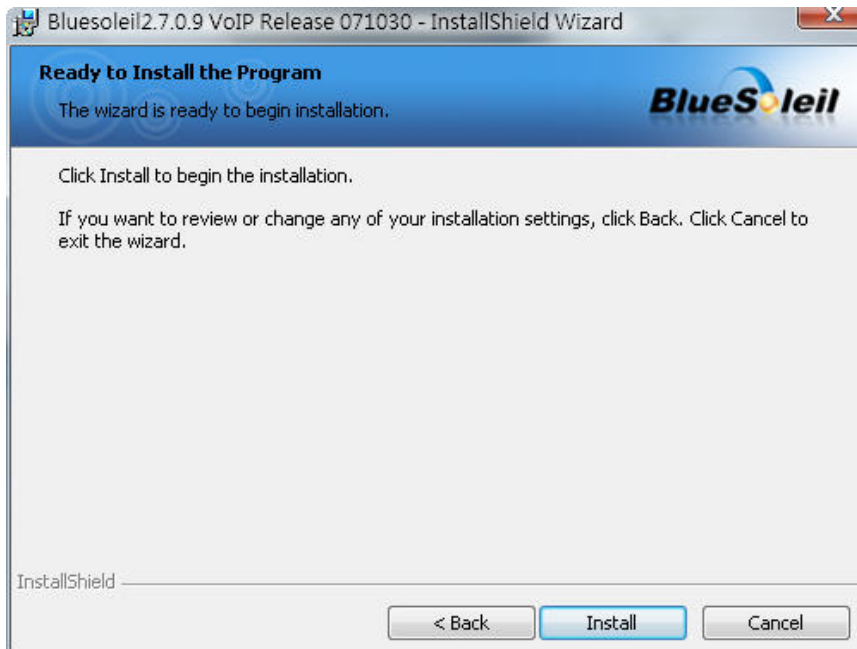
5. Please click *Next* button several times to continue the software installation. In the *License Agreement* window, please read license agreement carefully, then click “Yes” button to continue.

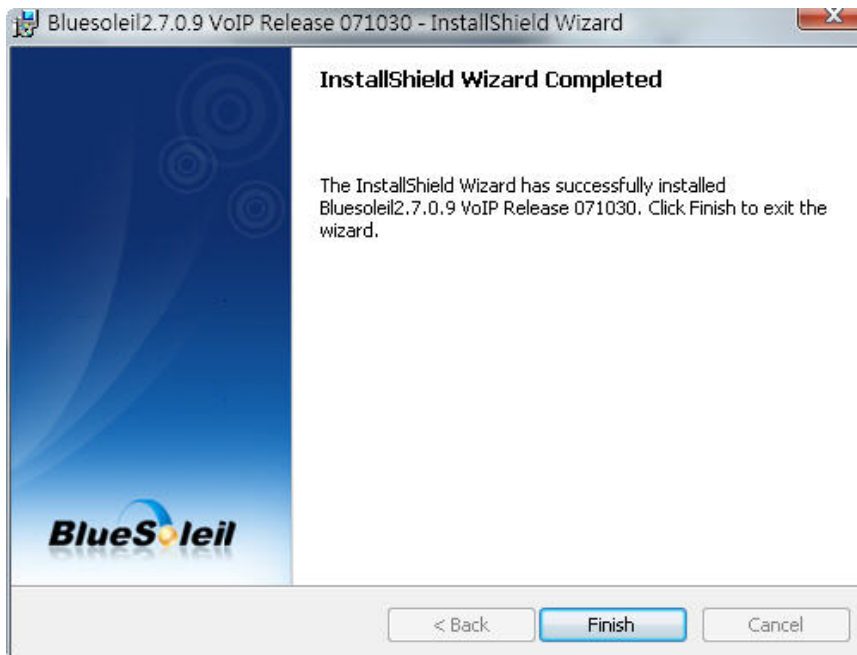


6. Indicate the location of where you want Bluetooth Software to be stored; if you do not change the default settings, it will be stored under **C:\Program Files\IVT Corporation\IVT BlueSoleil** (Recommended). Click on *Next* button to continue. Or you can select your prefers location to install.

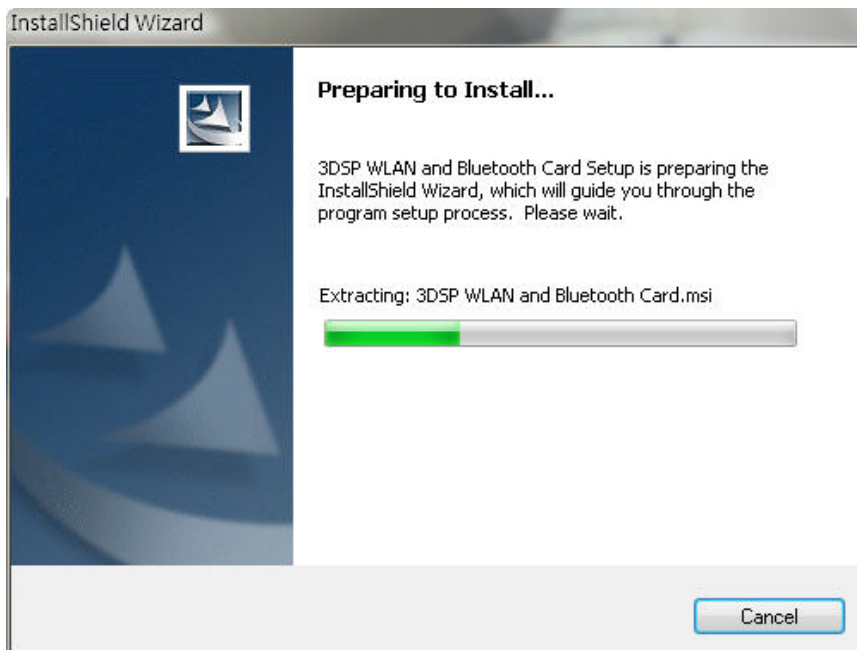


7. The Install Shield Wizard will begin to install the software and copy files to your hard disk. After copy all the files, the installation will try to install virtual Bluetooth device in your system. It may take a few minutes, please wait it finishes the installation.

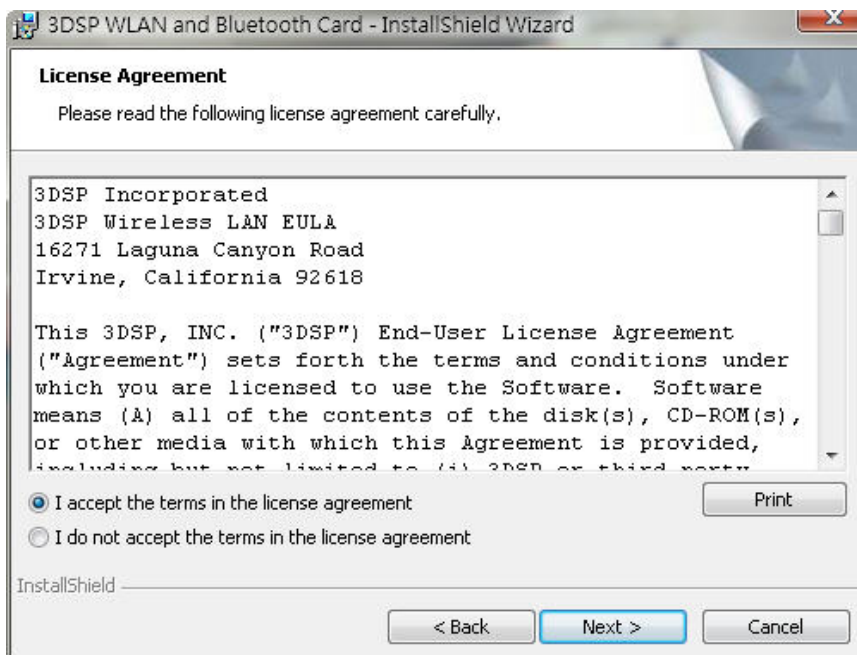




8. After finish installation the IVT Bluesoleil, then the install system will continue install the 3DSP Wireless driver and application; press the “Next” button to continue.



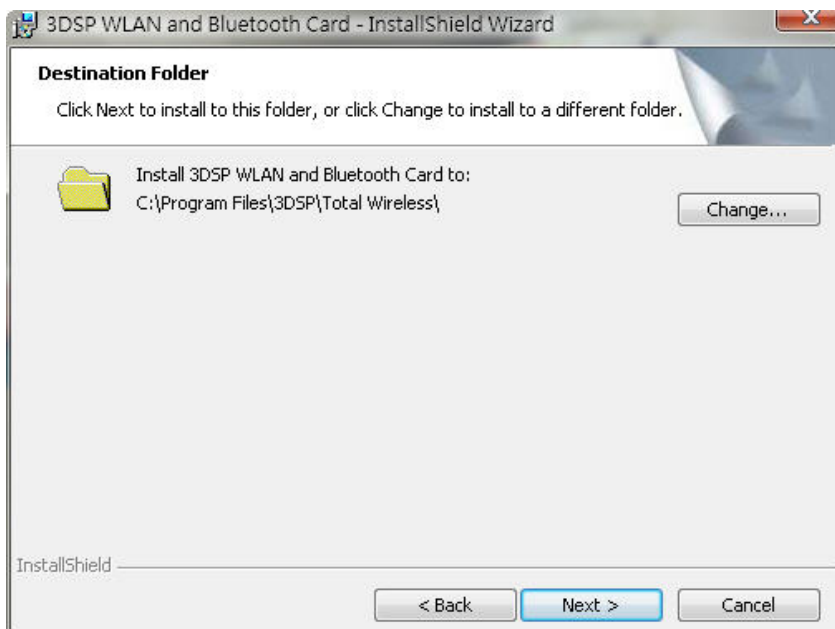
9. Please click *Next* button several times to continue the software installation. In the *License Agreement* window, please read license agreement carefully, then click “Yes” button to continue.



10. Because the Wifi has different regulate in different place (Europe and Japan are 14 Channels, Taiwan is 13 Channels, the others are 11 Channels). So, please choose the place you are located and continue.

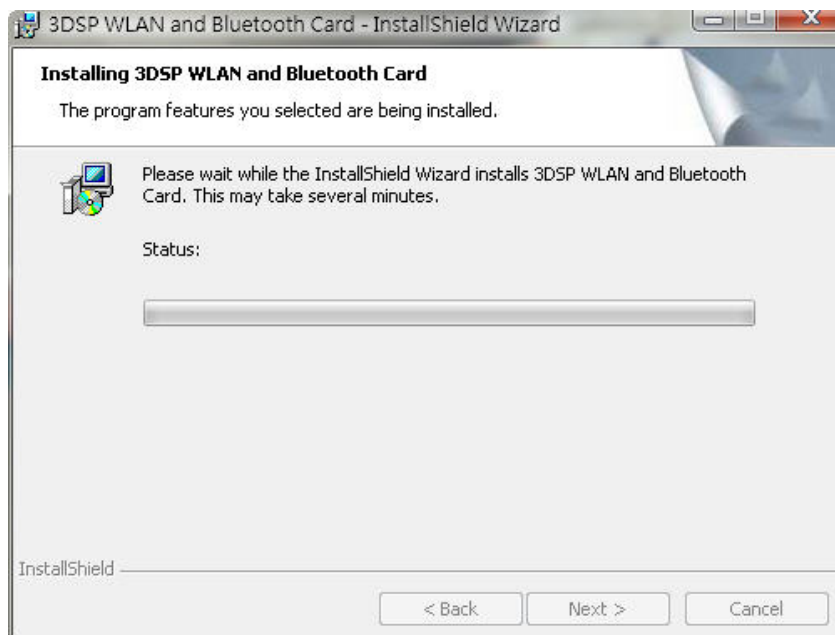
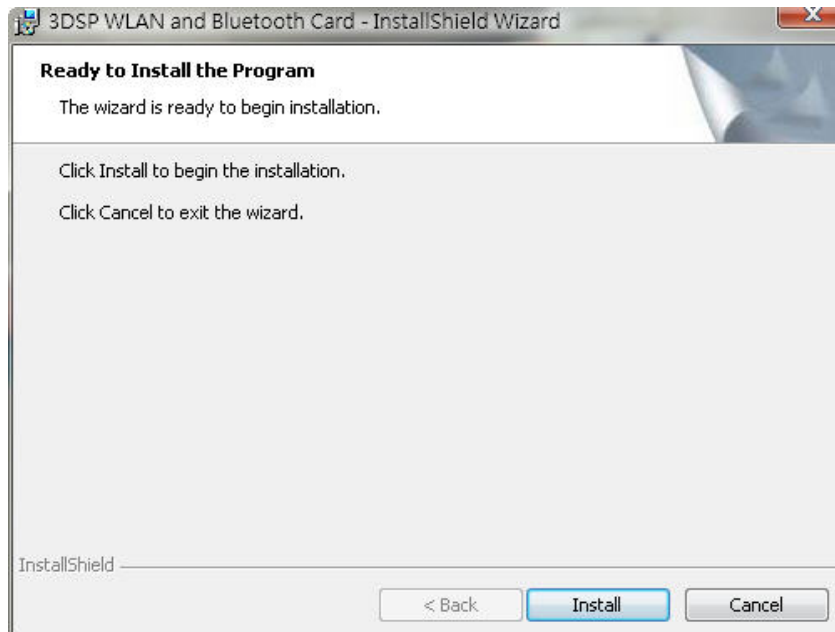


11. Indicate the location of where you want 3DSP WLAN driver to be stored; if you do not change the default settings, it will be stored under **C:\Program Files\3DSP\Total Wireless** (Recommended). Click on *Next* button to continue. Or you can select your prefers location to install.

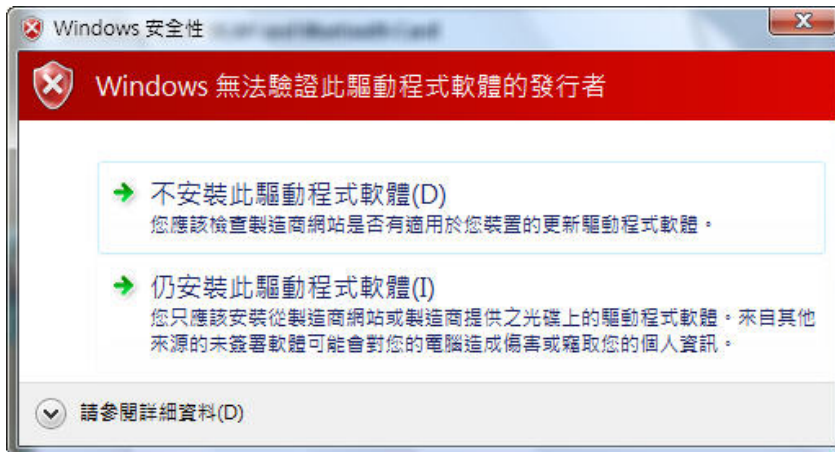


12. The Install Shield Wizard will begin to install the software and copy files to your hard disk. After copy all the files, the installation will try to install virtual Bluetooth device in your system. It may take a few minutes, please wait it finishes

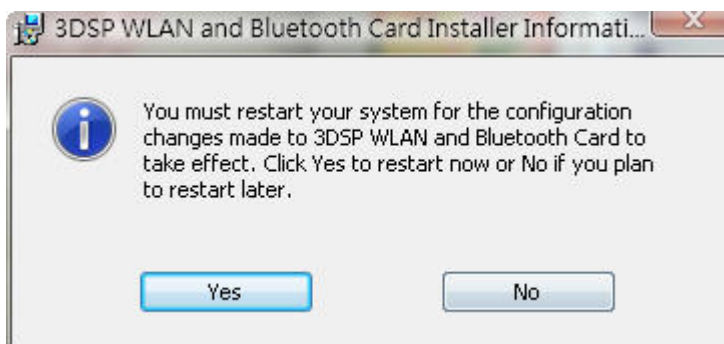
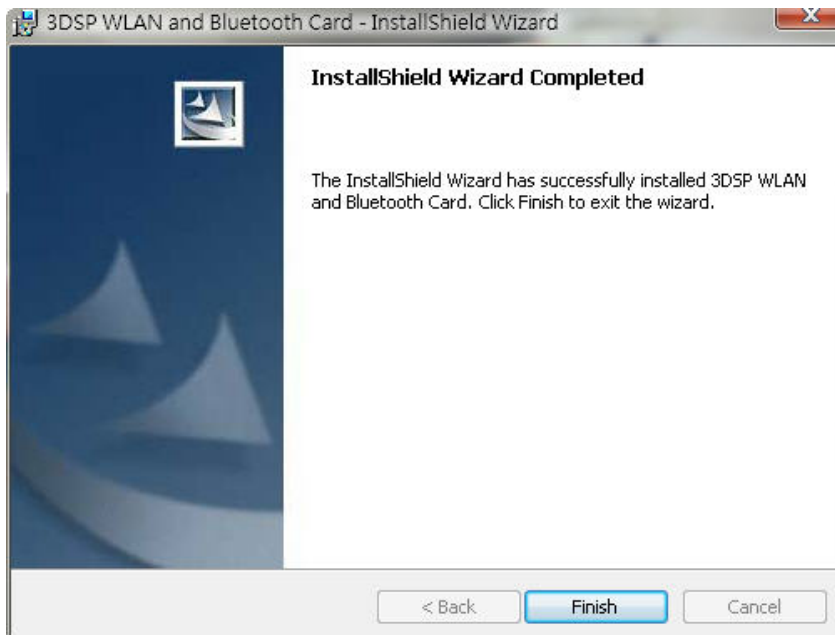
the installation.



13. While installation, currently the driver is not totally compatible with Microsoft Vista operation system. And will display the caution message. Please select “still installation the driver anyway” to continue.



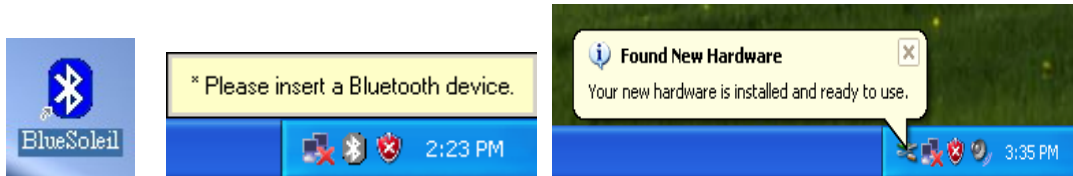
14. After finish installation, please select reboot your system to finish the installation.
Or you can select to reboot later.



15. After shut-down your computer, Please Install the SPL912N2R4 PCI card in your

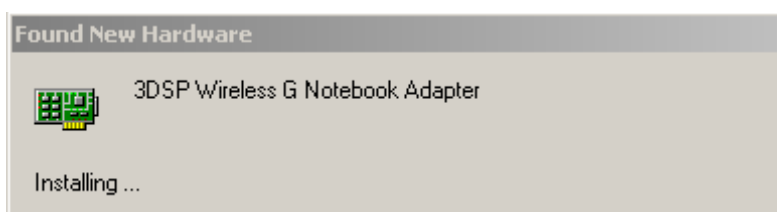
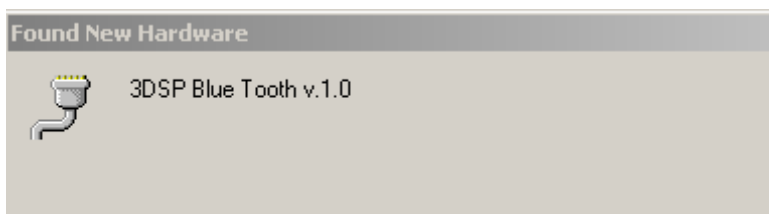
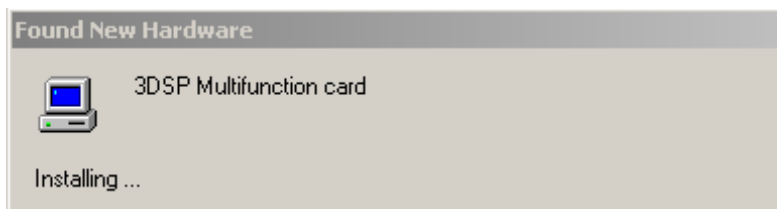
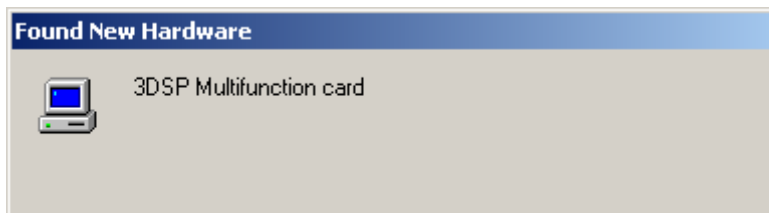
PC mother board. After install the card appropriately. Then restart your PC system.

16. There are two new Bluetooth icons appear on the desktop and the windows task bar respectively when logged in Windows operating system. For more information on the BlueSoleil, please refer to Chapter 2.



9.

After shut-down your computer. Install the SPL912N2R4 802.11b/g and Bluetooth PCI Adapter into an available PCI slot on PC's motherboard. After install accomplish, and then restart your computer. After into the windows system, a “Found New Hardware” message will appear in your system tray briefly, as shown in the following image.

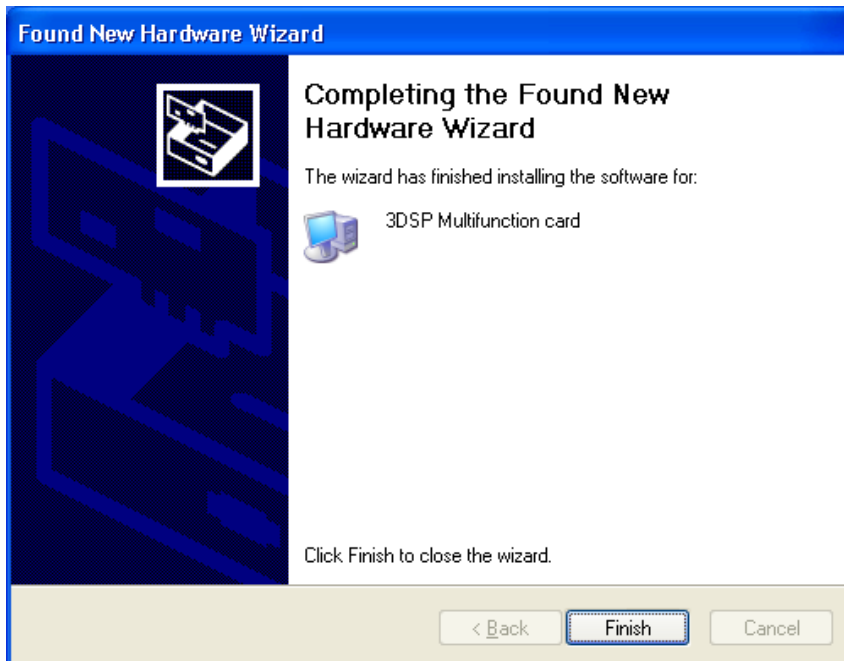
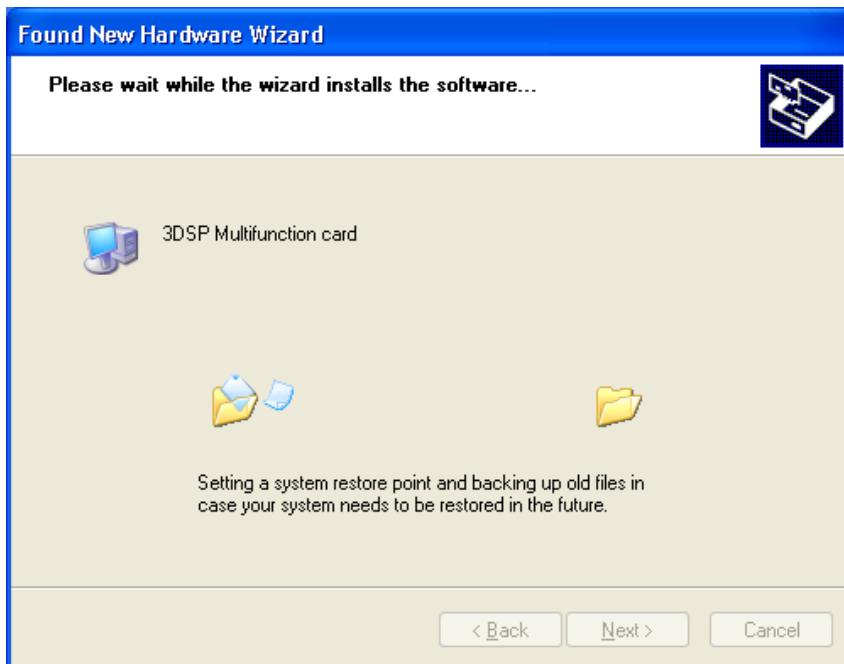




The screen on the left appears. Select No, not this time, and click “Next”.



Click **Next**.



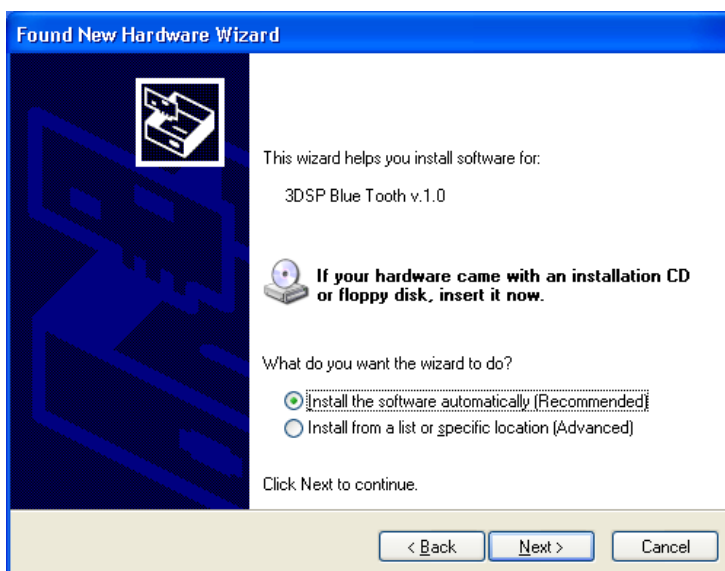
Press “Finish” for finish the driver and programs installation.

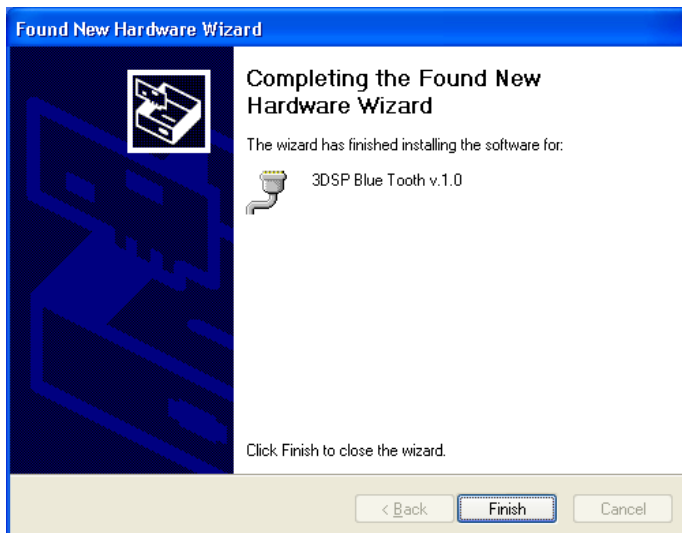
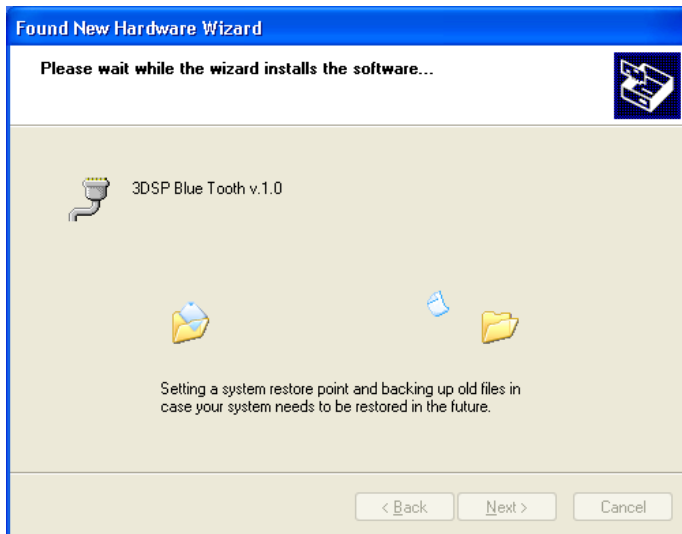
10. Please remove the Software CD after the installation is complete.

11. After a few seconds, another “Found New Hardware” message will appear briefly, as shown on the following pictures.

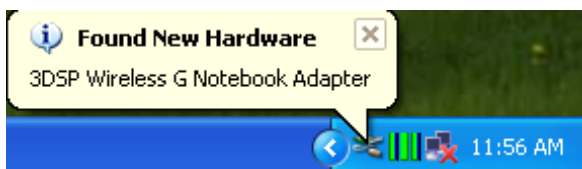


A Bluetooth icon will appear in your system tray

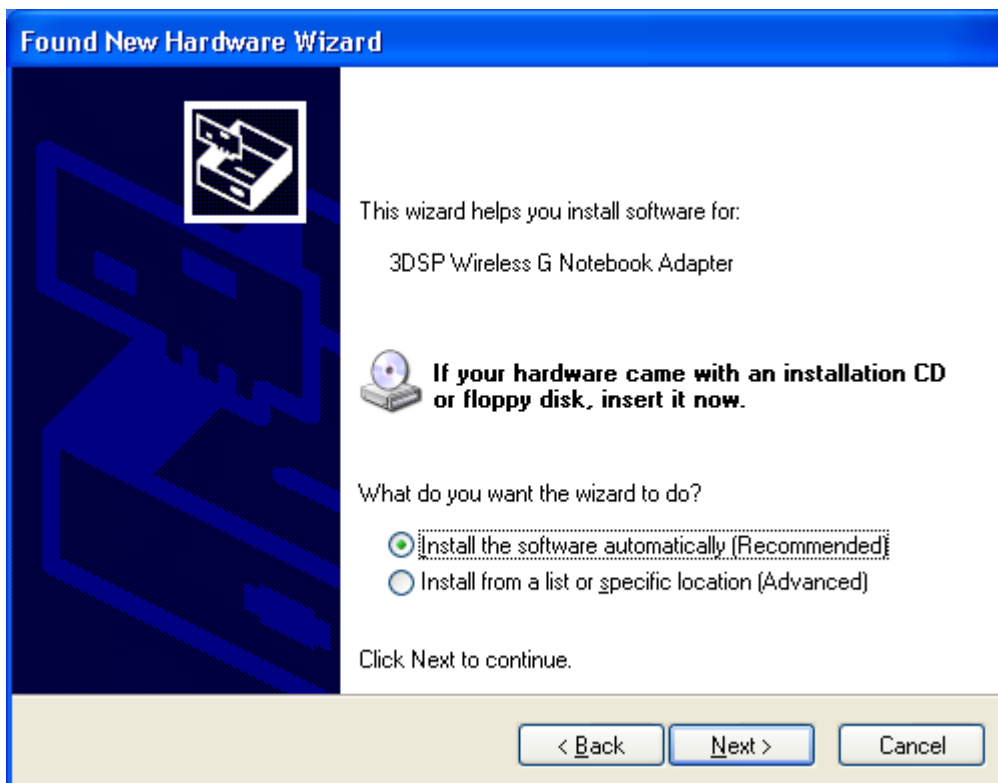


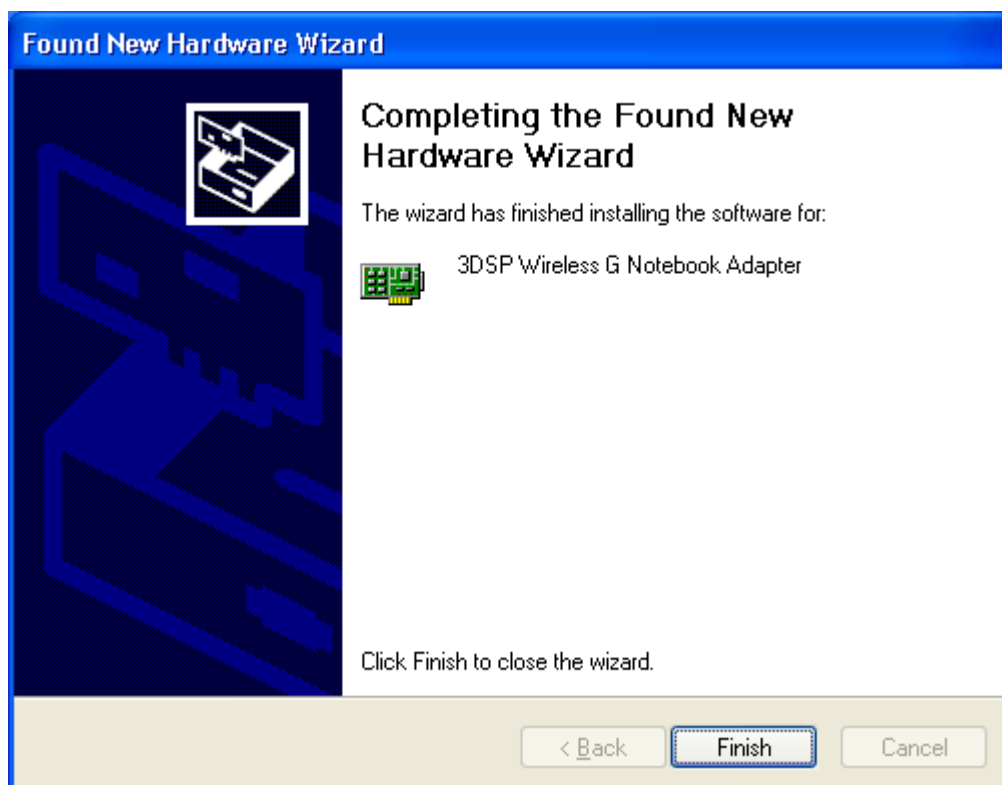
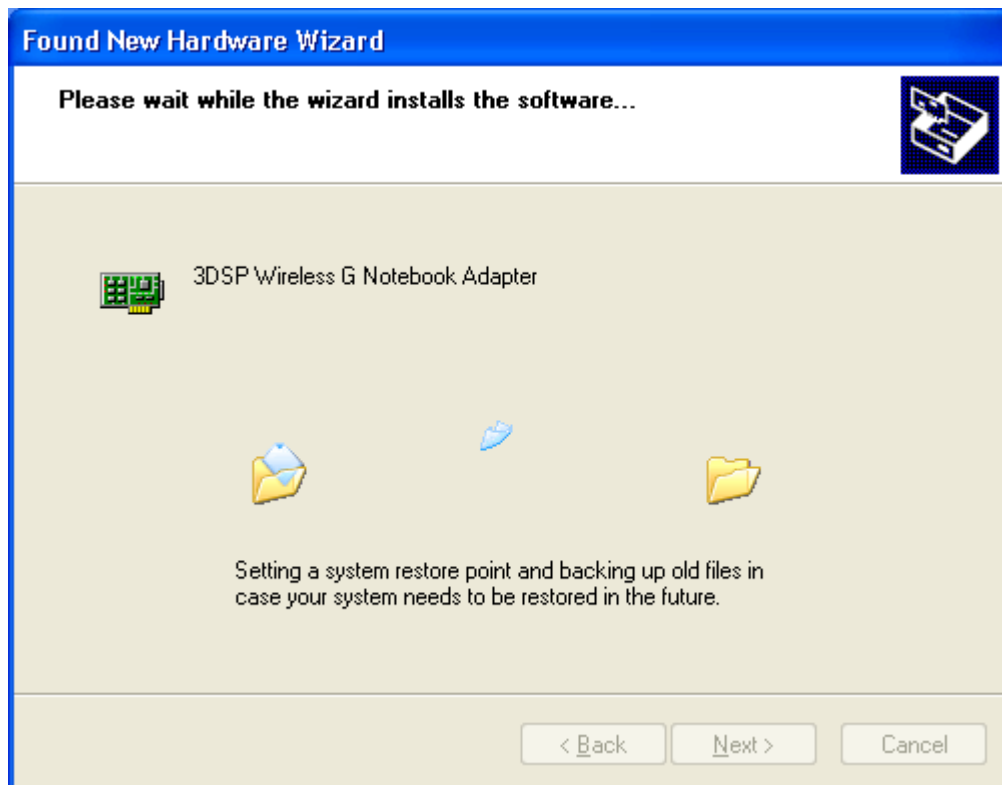


Click Finish to close the window.



Windows will find another new hardware (see above), and the following screen will appear. Select **No, not this time**, and click **next** several times.



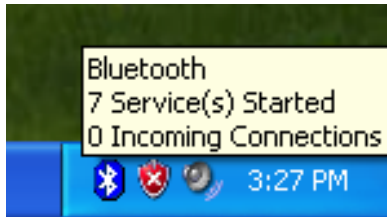


Click **Finish** to close the wizard.

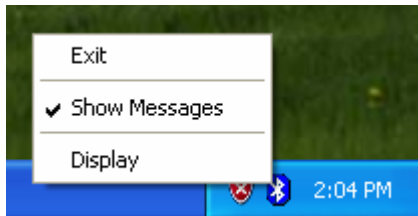
2. Start the Bluetooth Device

Start the Bluetooth service for ready to service.

1. After you install the PCI card, the system tray Icon will become available.



2. Right Click the Bluetooth service tray Icon, press the **“Display”**.



3. Give this Bluetooth service computer a name and computer type, let the other Bluetooth identify.



3. Stop the Bluetooth Device

Remove the PCI card from the system. The tray bar icon will show the BlueSoleil is not available.

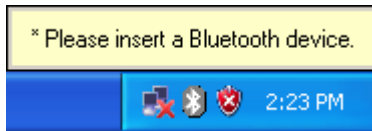
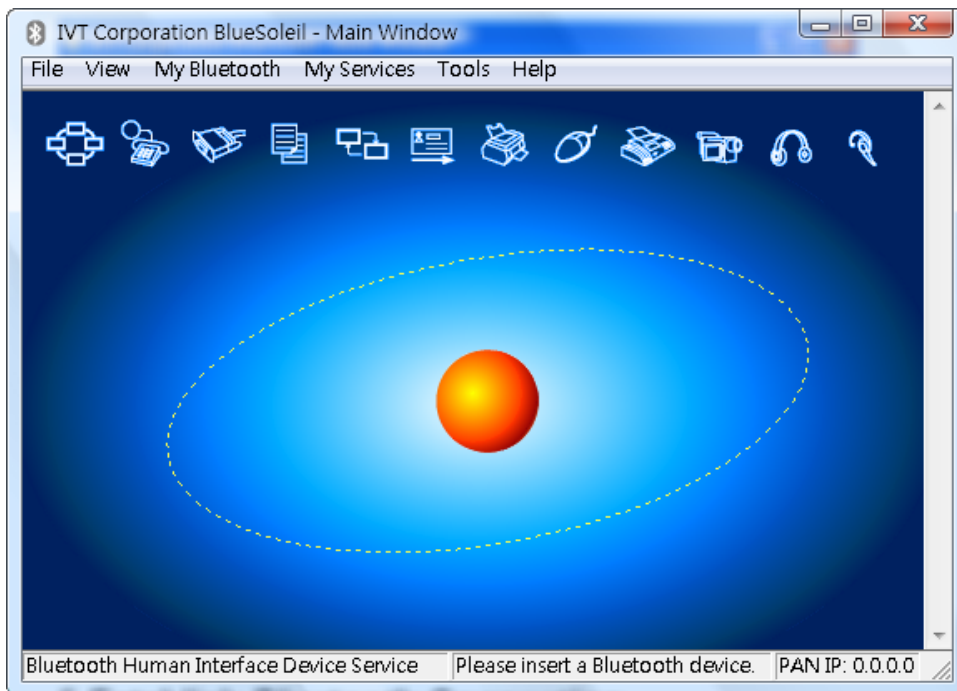


Figure 1-26: The Bluetooth Device is not available.

4. Start Bluetooth

1. Start BlueSoleil.



5 Establish Bluetooth Connection

A connection is normally initiated from the client.

- On the server side, start the service.
- On the client side, initiate the connection.

Start Service on Server

If BlueSoleil provides service, please start the service:

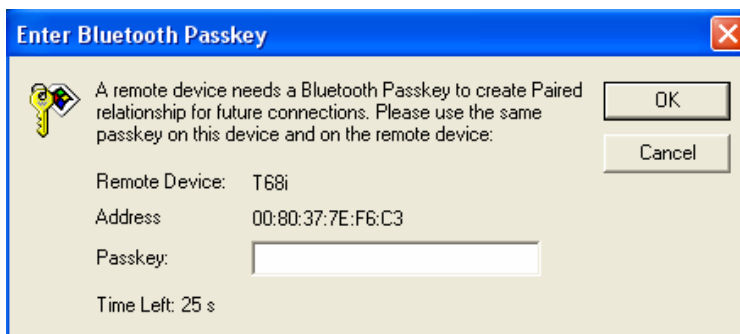
1. Change to Service Window.
2. Right-click the service icon, select Start Service on the pop-up menu.

Initiate Connection on Client

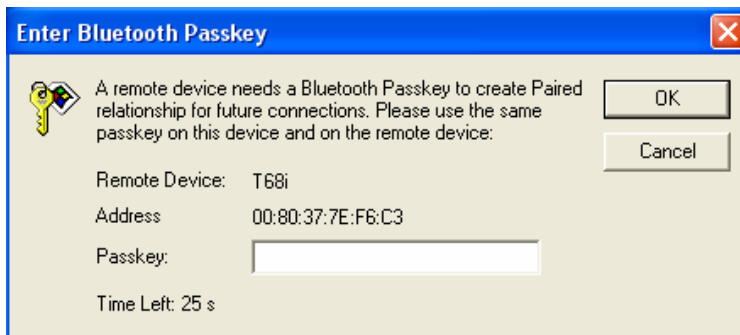
In Main Window:

1. Single click my device, the center ball, to search the Bluetooth devices in range.
2. Search the selected Bluetooth device service by double-clicking the device icon. Service button on the top of the BlueSoleil Main Window will be highlighted if the service is supported by the device. Enter the same Bluetooth passkey on both devices if necessary to pair the two devices.
3. Connect.

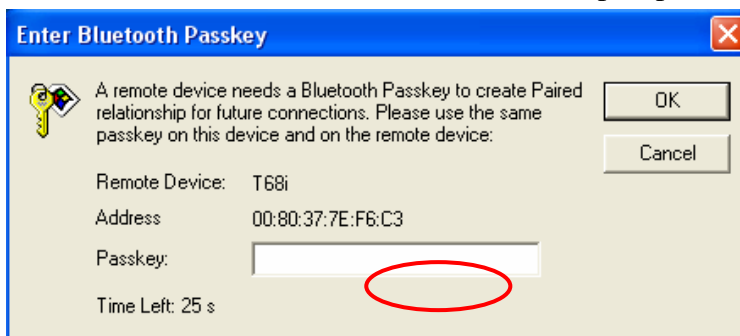
Single-click the highlighted service button to establish the connection



- A. If the other device needs pair, the Bluetooth Icon in the system tray will show a warning message that the Bluetooth connection need input pair numbers.



B. Input **the same pair number** as you input in the other Bluetooth device. Then click ok to finish the Bluetooth connection pair procedure.





6. Specifications

Standards	IEEE 802.11a, IEEE 802.11b, IEEE 802.11g
Interface	Standard 32bit PCI
LED Indicators	Power, Network
Transmit Power	12 dBm to 17 dBm
Sensitivity	-70dBm@54Mbps, -83.5dBm@11Mbps
Channel Frequency	2.4 GHz, 11 Channel for Wifi, 79 Channel for Bluetooth
Power	DC: 3.3V@PCI
Modulation	802.11a and 802.11g: OFDM 802.11b: CCK, DQPSK, DBPSK, Barker Code Bluetooth: DQPSK, 8DPSK, GFSK
Security Features	WEP, WPA, RADIUS, TKIP
WEP Key Bits	64 / 128 bit
Protocol	TCP/IP
Dimensions	11.5 x 5.3 cm (4.53 x 2.09 in)
Unit Weight	50 g. (4.8 oz)
Certifications	CE, FCC, Wi-Fi Certification(802.11a, 802.11b, 802.11g), BQB 2.0 EDR(Bluetooth Qualification Body), WHQL: Vista 32-bit, Vista-64bit, XP, 2000, ME
Bluetooth Spec Compliance, Bluetooth	Bluetooth 2.0 EDR (Enhanced Data Rate)
Output Power Class	Class 1 (100 meter)
Operating Temperature	32°F to 131°F (0° C to 55° C)
Storage Temperature	04°F to 185°F (-20° C to 85° C)
Operating Humidity	10% to 85%, Non-Condensing
Storage Humidity	5% to 90%, Non-Condensing
Emissions	CE, FCC Class B

FCC Compliance and Advisory Statement

This device complies with Part 15 of the FCC rules. Operation is subject to the following two conditions:(1) this device may not cause harmful interference, and (2) this device must accept any interference received, including interference that may cause undesired operation.

This equipment has been tested and found to comply with the limits for a Class B digital device, according to Part 15 of the FCC rules. These limits are designed to provide reasonable protection against harmful interference in a residential installation. This equipment generates, uses and can radiate radio frequency energy and if not installed and used in accordance with the instructions, may cause harmful interference to radio communications. However, there is no guarantee that interference will not occur in a particular installation. If this equipment does cause harmful interference to radio or television reception, which can be determined by turning the equipment off and on, the user is encouraged to try correct the interference by one or more of the following measures:

- 1.Reorient the receiving antenna.
- 2.Increase the separation between the equipment and receiver.
- 3.Connect the equipment into and outlet on a circuit different from that to which the receiver is connected.
- 4.Consult the dealer or an experienced radio/TV technician for help.

Any special accessories needed for compliance must be specified in the instruction manual.

Warning: A shielded-type power cord is required in order to meet FCC emission limits and also to prevent interference to the nearby radio and television reception. It is essential that only the supplied power cord be used. Use only shielded cables to connect I/O devices to this equipment.

CAUTION: Any changes or modifications not expressly approved by the party responsible for compliance could void your authority to operate the equipment.