

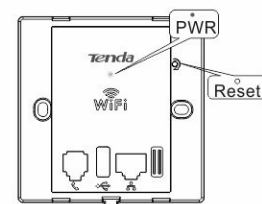
Start

Please read this Install Guide carefully before you start. For information that is not covered here, see User Guide on the resource CD or on <http://www.tendacn.com>

1 Package Contents



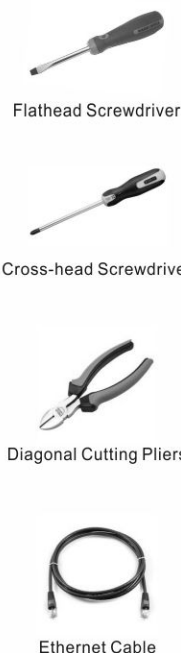
2 LED Status



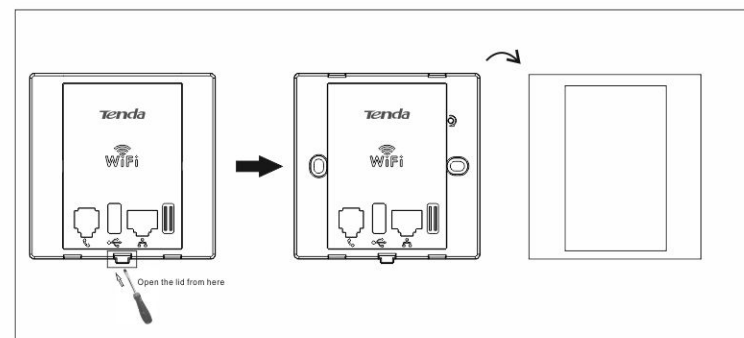
LED	Color	Status	Description
PWR	Green	Solid	The device is connected to power supply
		Blinking	The device is functioning correctly.
		Off	Power is not supplied to the device or the device is malfunctioning.

3 Hardware Install

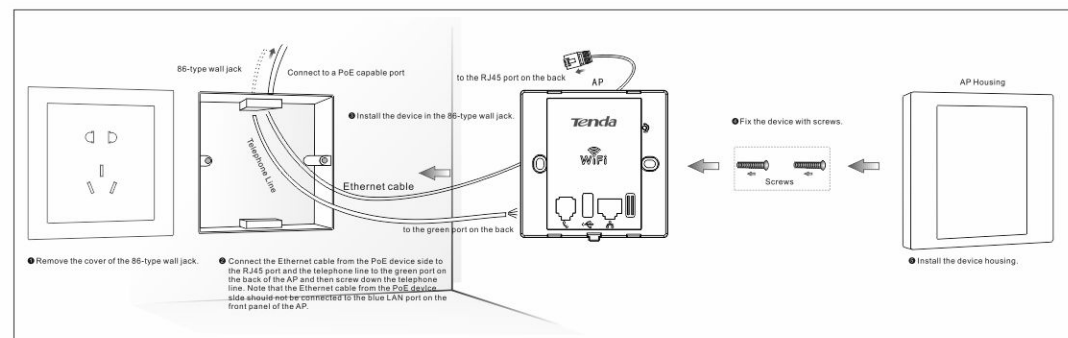
Tip
Prepare the following installation tools.



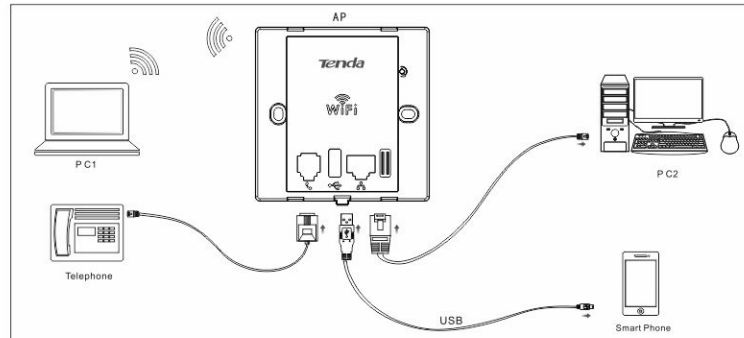
Step 1: Remove the device's lid with a flathead screwdriver;



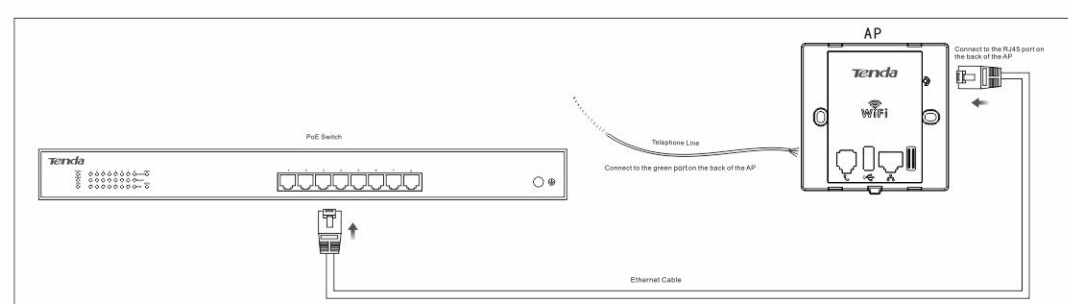
Step 2: Install the device;



Step 3: Connect terminal device(s);



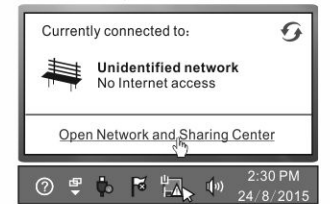
Step 4: Verify the network topology.



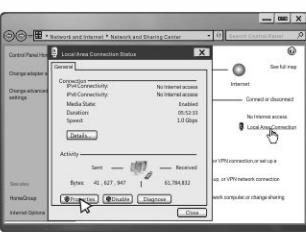
4 Configure Your PC

Windows 7

Step 1: Click the icon on the bottom right corner of your desktop.



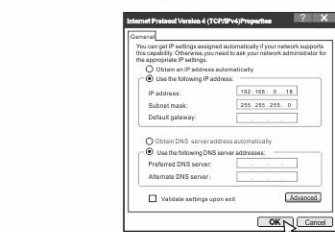
Step 2: Click **Open Network and Sharing Center**.



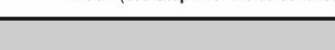
Step 3: Click **Local Area Connection -> Properties**.



Step 4: Find and double click **Internet Protocol Version 4 (TCP/IPv4)**;



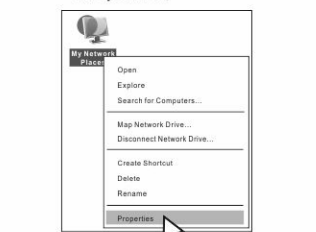
Step 5: Select **Use the following IP address**, IP address: **192.168.0.X (2-253)**, Subnet mask: **255.255.255.0** and click **OK**;



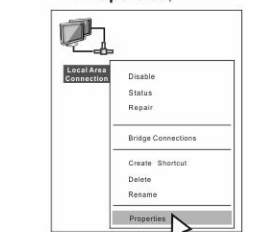
Step 6: Click **OK** on the **Local Area Connection Properties** window (see **Step 4** for the screenshot).

Windows XP

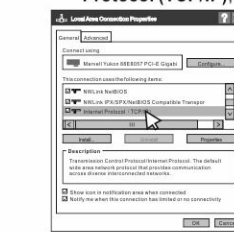
Step 1: Right click **My Network Places** on your desktop and select **Properties**;



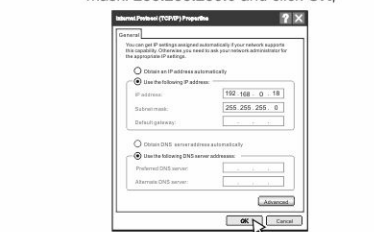
Step 2: Right click **Local Area Connection** and select **Properties**;



Step 3: Scroll down to find and double click **Internet Protocol (TCP/IP)**;



Step 4: Select **Use the following IP address**, IP address: **192.168.0.X(2-253)**, subnet mask: **255.255.255.0** and click **OK**;

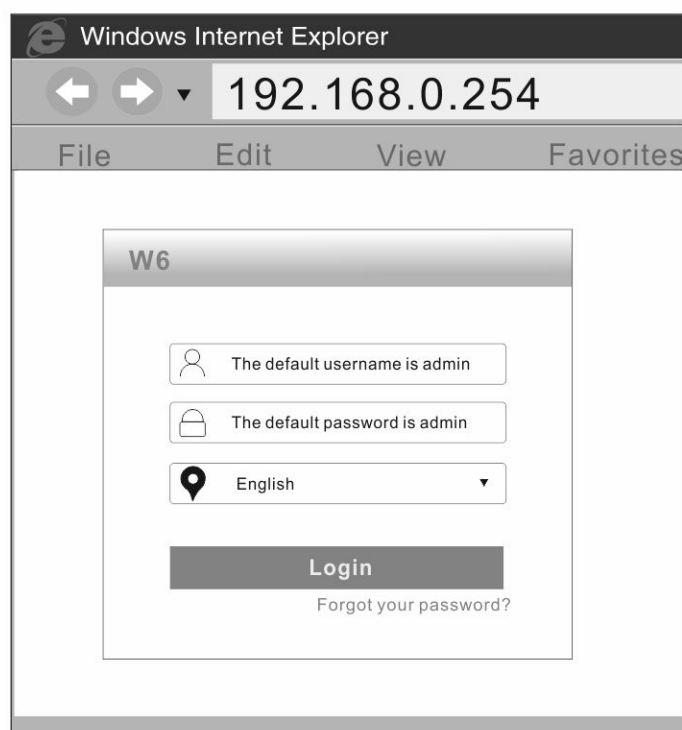


Step 5: Click **OK** on the **Local Area Connection Properties** window (see **Step 3** for the screenshot).

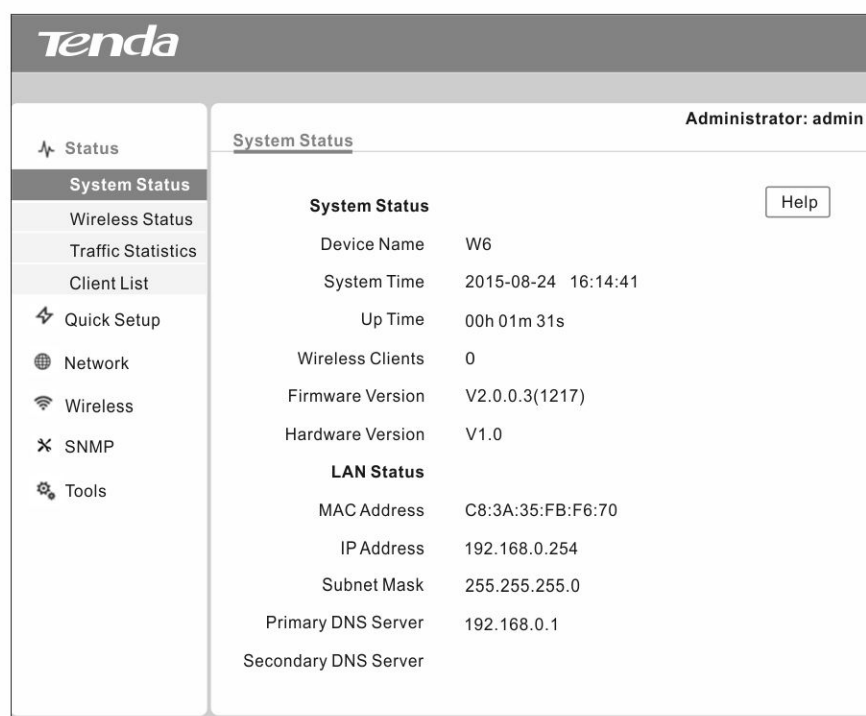
5 Configure Your Device

Tip The following **Step 2: LAN Setup** is an optional step.

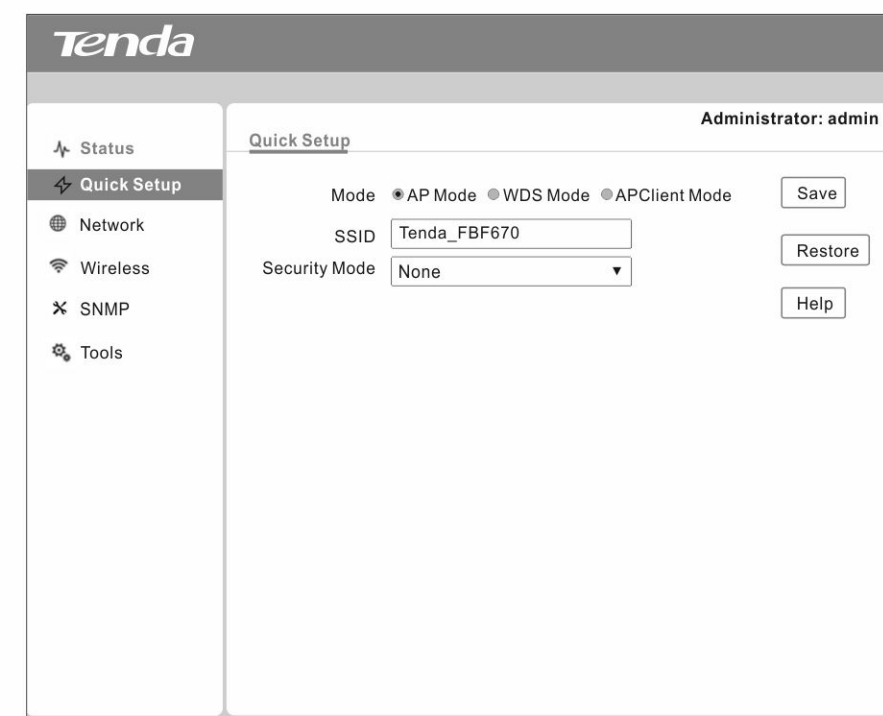
Step 1: Launch a web browser, input **192.168.0.254** in the address bar and press Enter. Enter the login user name and password (Both are preset to lowercase **admin**.) and then click **Login**.



Step 2: Then you can go to this device's web page to view corresponding configuration information or configure relevant settings.



Step 3: Quick Setup: Click **Quick Setup** and configure the mode, SSID and security mode, and then click **Save** to apply your settings.

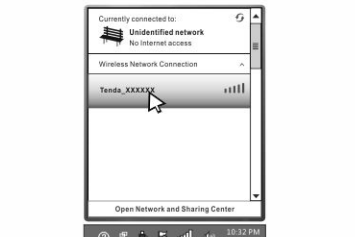


6 Join Your Wireless Network

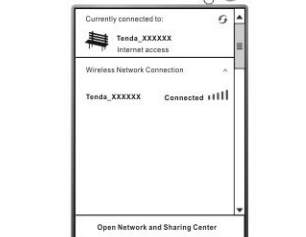
Tip 1. The PC you use must have an installed wireless network adapter ; 2.The device's SSID is "Tenda_XXXXXX" by default (where "XXXXXX" is the last six characters of its MAC address). You can find the MAC address on the label attached to the device).

Windows 7

Step 1: Click the icon on the bottom right corner of your desktop.

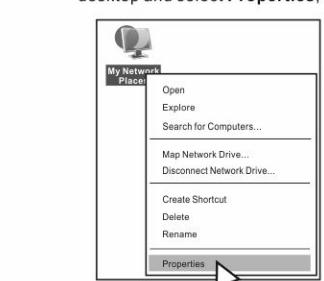


Step 2: Double click your SSID and then follow onscreen instructions.

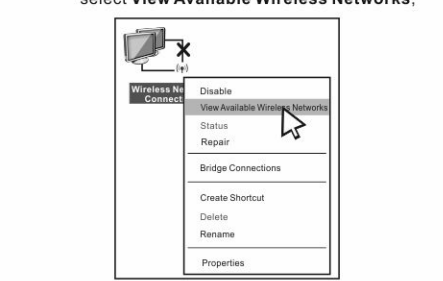


Windows XP

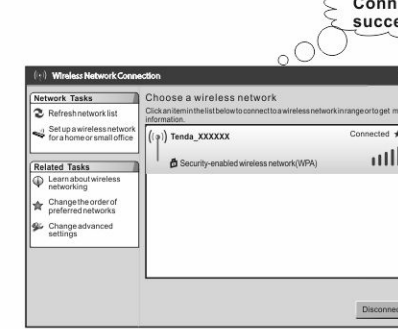
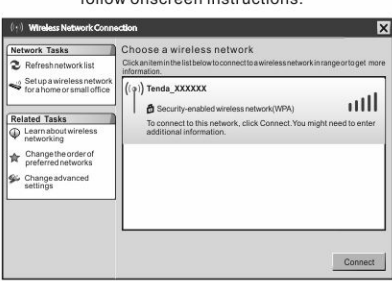
Step 1: Right click **My Network Places** on your desktop and select **Properties**;



Step 2: Right click **Wireless Network Connection** and select **View Available Wireless Networks**;



Step 3: Find and double click your SSID and then follow onscreen instructions.



Safety and Emission Statement

CE Mark Warning
This is a Class B product. In a domestic environment, this product may cause radio interference, in which case the user may be required to take adequate measures.

NOTE: (1) The manufacturer is not responsible for any radio or TV interference caused by unauthorized modifications to this equipment. (2) To avoid unnecessary radiation interference, it is recommended to use a shielded RJ45 cable.

This equipment has been tested and found to comply with the limits for a Class B digital device, pursuant to Part 15 of the FCC Rules. These limits are designed to provide reasonable protection against harmful interference in a residential installation. This equipment generates, uses and can radiate radio frequency energy and, if not installed and used in accordance with the instructions, may cause harmful interference to radio communications. However, there is no guarantee that interference will not occur in a particular installation. If this equipment does cause harmful interference to radio or television reception, which can be determined by turning the equipment off and on, the user is encouraged to try to correct the interference by one of the following measures:

- Reorient or relocate the receiving antenna.
- Increase the separation between the equipment and receiver.
- Connect the equipment into an outlet on a circuit different from that to which the receiver is connected.
- Consult the dealer or an experienced radio/TV technician for help.

FCC Caution: Any changes or modifications not expressly approved by the party responsible for compliance could void the user's authority to operate this equipment.

This transmitter must not be co-located or operating in conjunction with any other antenna or transmitter.

The manufacturer is not responsible for any radio or TV interference caused by unauthorized modifications to this equipment.

Radiation Exposure Statement

This equipment complies with FCC radiation exposure limits set forth for an uncontrolled environment. This equipment should be installed and operated with minimum distance 20cm between the radiator & your body.

©2015 Shenzhen Tenda Technology Co., Ltd. All rights reserved.

This documentation (including pictures, images, and product specifications, etc.) is for reference only. Nothing here constitutes the warranty of any kind, express or implied. To improve internal design, operational function, and/or reliability, Tenda reserves the right to make changes to the products described in this document without obligation to notify any person or organization of such revisions or changes.

Manufacturer: SHENZHEN TENDA TECHNOLOGY CO., LTD
Address: 8/F, Tower E3, No. 1001, Zhonghuan Road, Nanshan District, Shenzhen, China. 518052
Website: <http://www.tendacn.com>
Technical Support: support@tenda.com
Telephone: (86 755) 2765 7180
Skype: tendas2
Email: sales@tenda.com
YouTube: Tendaz1999