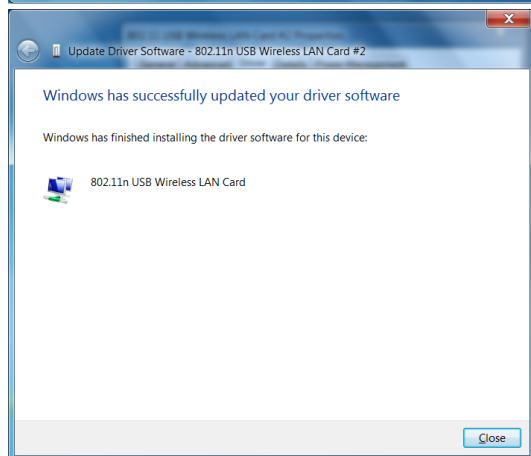
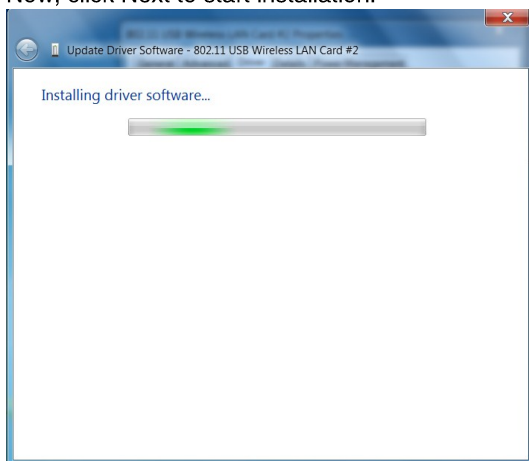


Now, click Next to start installation.



1.3 Note that the installation applies only to compatible PSP Xlink Mode. Do use the Win7 internal UI as seen below to search and

connect to the desired wireless signal as Tenda wireless adapter UI is no longer available.



Now you have finished installing the wireless adapter's driver. For other settings, see "2.2 To configure wireless adapter's properties" in Windows XP OS.

If you are using Windows XP, do as follows:

1. See below for the network topology between your PSP and a PSP-capable wireless adapter, say W322U:



Connect your PC to Internet via a wired connection and wireless adapter to PSP via a point-to-point connection.

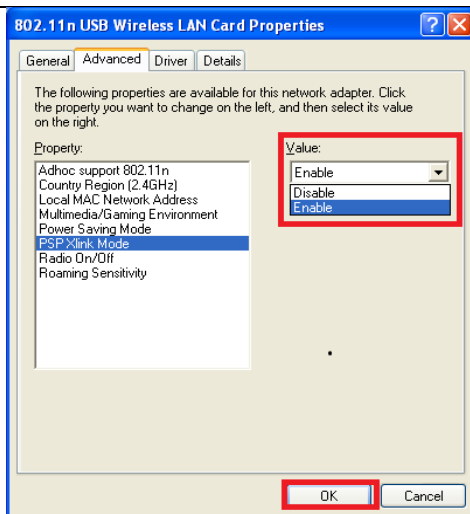
2. Configure wireless adapter:

- 2.1 To install the wireless adapter, refer to installation instructions herein (Chapter 2 ->section 2.2).

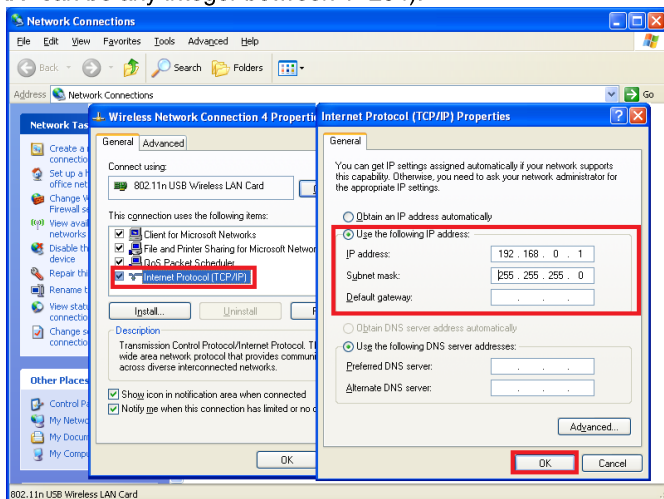
- 2.2 To configure wireless adapter's properties

After you have installed the driver properly:

- a) Right click "My Computer" and select "Manage" -> "Device Manager";
- b) Right click "802.11n USB Wireless LAN Card" and select "Properties" -> "PSP Xlink Mode" -> "Enable".



2.3 Set the wireless adapter's IP address to "192.168.0.XXX" (where "XXX" can be any integer between 1~254).



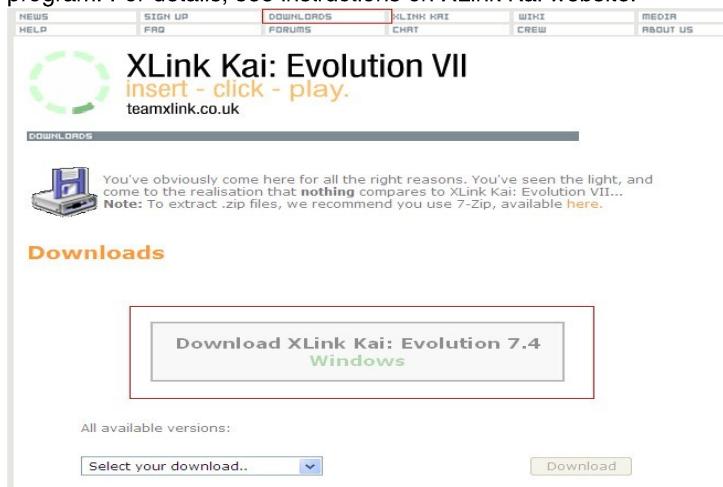
3. Install XLink Kai

3.1 Log in to XLink Kai website: <http://www.teamxlink.co.uk> and register a Kai account.



3.2 Download Kai Client

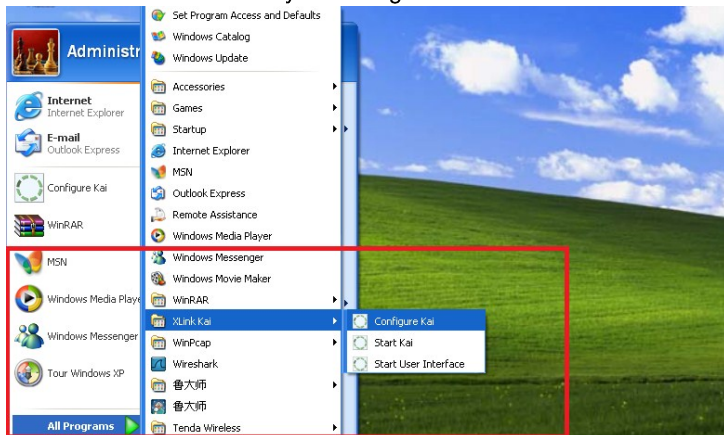
Select a proper client program according to your PC's OS. For example, if you are using XP, then select an XP-compatible client program; if you are using Win7, then select a Vista-compatible client program. For details, see instructions on XLink Kai website.



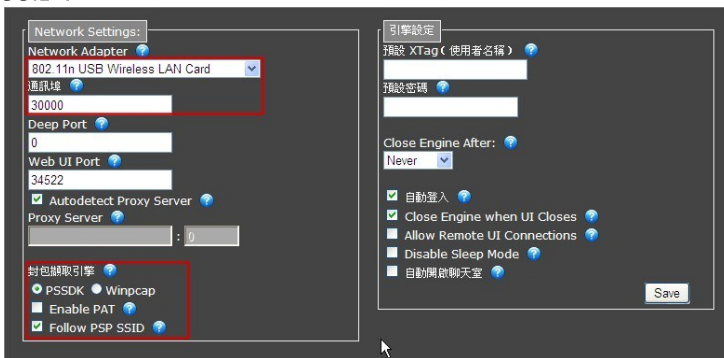
3.3 Install the client program.

3.4 Run and configure Kai program

Click "Start" → "All Programs" → "XLink Kai" → "Configure Kai" as seen below and then save your configurations.



Select "802.11n USB Wireless LAN Card" and check "Follow PSP SSID".



4. Set PSP to Ad-Hoc mode:

4.1 Select proper network settings (Ensure that WLAN at top left corner on the PSP is on).



4.2 Select Ad-Hoc mode



4.3 Select a proper channel (Auto is recommended)

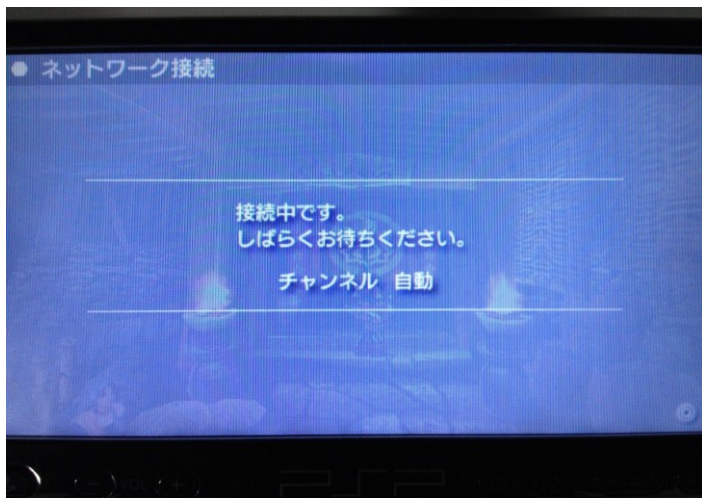
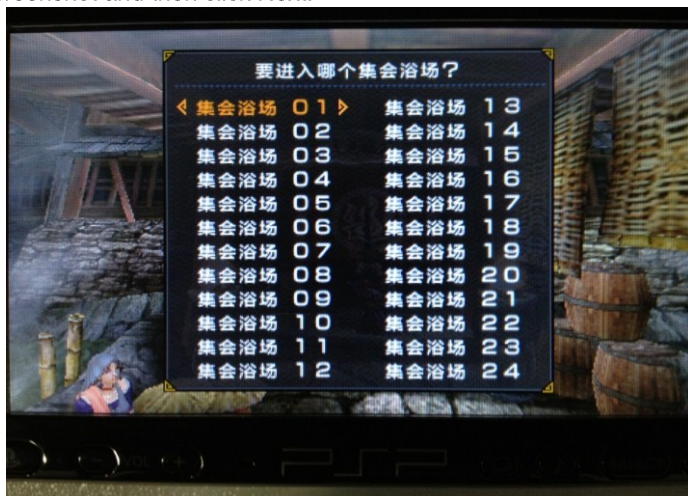


5. Here we take "Monster Hunter Portable 3rd" as an example (Note that you must have available online games).

5.1 Select online game mode and customize game settings as different games have different rules.



Here in the example we select "在线集会浴场" as seen in the screenshot and then click Next.

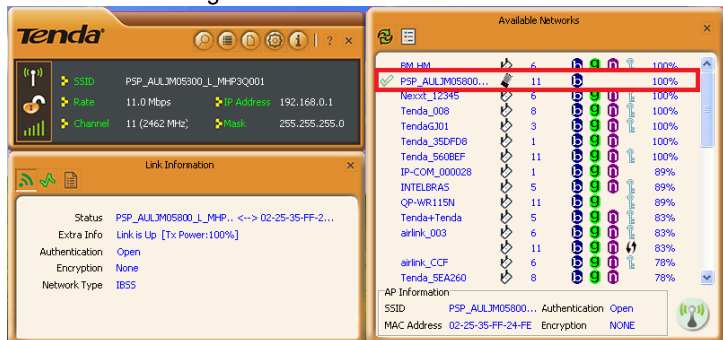


Now you will see a solid light from the wireless LED on your PSP (which indicates PSP is radiating wireless signal).

5.2 Disable your PC's firewall and anti-virus softwares (if any). This is specially recommended for new players.



5.3 Scan PSP using the W322U and double click to connect to it.



5.4 Log in to the KAI client program

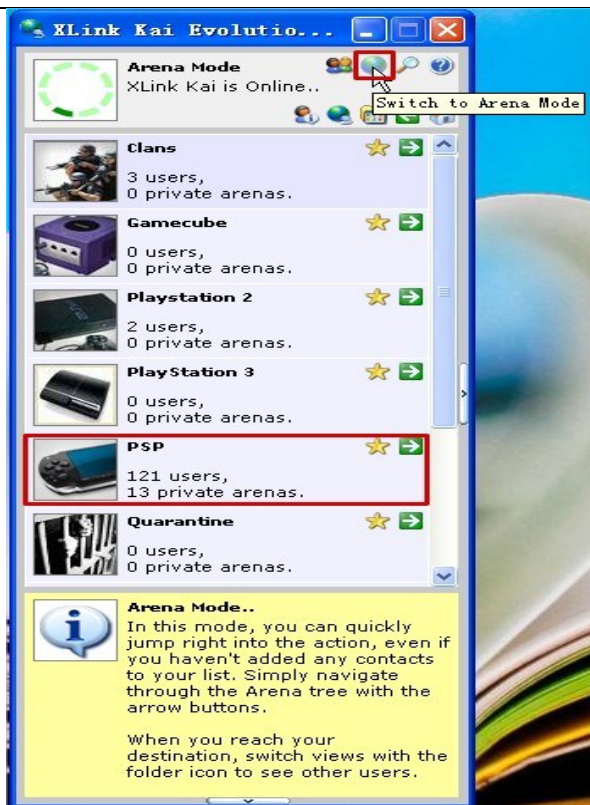
Click "Start" → "All Programs" → "XLink Kai" → "Start User Interface" and enter your Kai account information.



Now, if PSP is successfully connected to Internet, below highlighted area will display two "Yes" and you will see the PSP by clicking the file icon at the top right corner there.

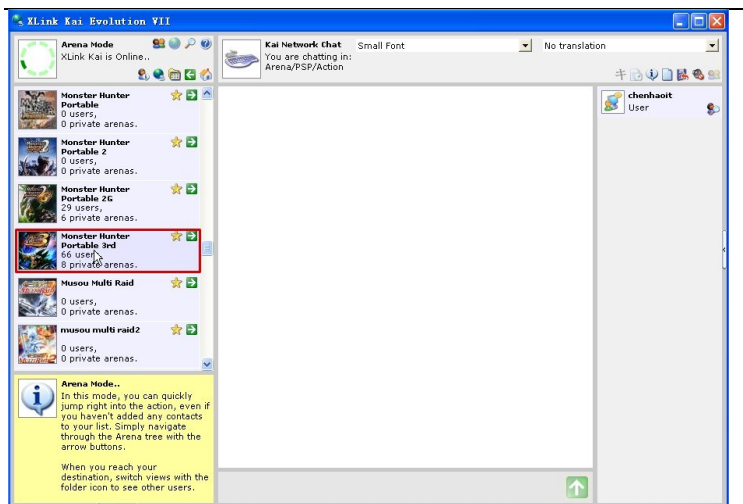


Select your game console type, say, PSP, as seen below.

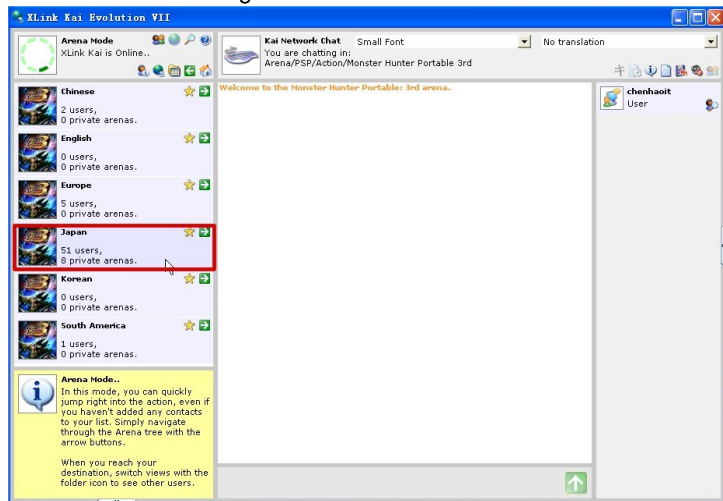


Click the arrow icon and select a game to play, say, "Monster Hunter Portable 3rd".

Tenda Wireless Network Adapter User Guide



Click Next to select a game arena and room.



5.5 Play games on PSP

After finishing all above settings, you shall see a list of players on the right. You can now enjoy playing games with them.



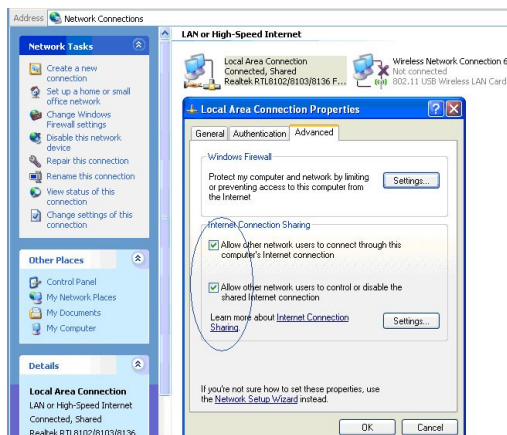
Appendix 4 FAQ

Q1: Microsoft ICS service is pending.

A1: If ICS service cannot be enabled after a long time, please re-switch from Station Mode to AP Mode ,if not successful ,please restart the computer.

Q2: ICS is already bound by another network device.

A2: Microsoft ICS service can only combine one group of WAN and LAN. This message indicates ICS may have been enabled by other network adapters. Please manually cancel ICS and re-switch to AP mode.



Manually enable or cancel ICS.

Q3: Failed to enable ICS.

A3: Microsoft ICS service can only combine one group of WAN and

LAN. This message indicates ICS may have been enabled by other network adapters.

1. Please manually cancel or restart and cancel ICS, then re-switch to AP mode.

2. This dialogue box appears because virtual wi-fi miniport adapter can only be used by one wireless network adapter at a time. Please disable any other non-Tenda wireless network adapters and re-switch to AP mode.

Q4: Under Windows 7, when I switch from station mode to AP mode, the screen flashes “Disabling ICS, please wait……” and immediately return to station screen.

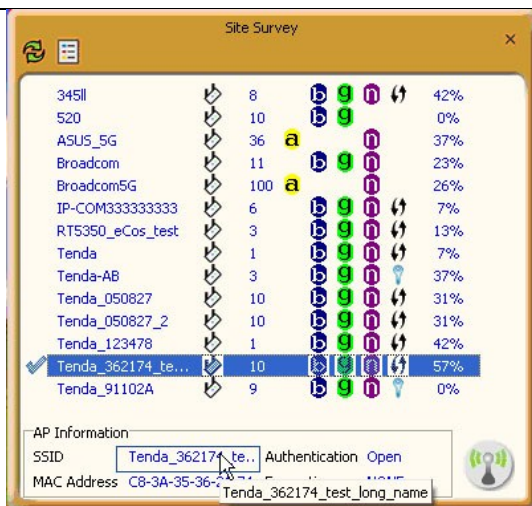
A4: This is because you have disabled “Microsoft Virtual WiFi Miniport Adapter”, please re-enable it and then switch to AP mode.

Q5: Client cannot obtain IP when connected to soft AP of the wireless network adapter.

A5: Manually set an IP address at the same net segment as that of the AP and the gateway and DNS at the IP address of AP. Thus, communication can be achieved.

Q6: The SSID is not fully displayed on the wireless network list, what should I do?

A6: Keep the mouse on the displayed SSID for about 2 seconds, as the below picture shows, and you'll see the full SSID on the appearing box.



Q7: Under Windows 2000 system, IP address can not be obtained when it is switched to AP Mode.

A7: Under Windows 2000 system, you have to manually configure sharing and then switch to AP. And an IP address of 192.168.0.1 will be obtained.

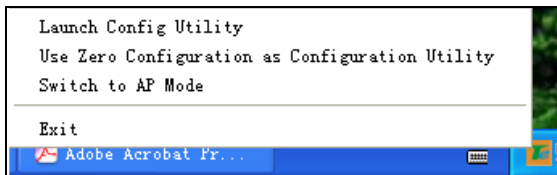
If you still have any problem, please contact our customer service or visit our website: <http://www.tendacn.com>

Q8: Sometimes the UI can not be moved by the mouse and also can not be minisized, why?

A8: when you are performing some configurations or connections ,the UI only activates the currently operating window, other windows are locked and can not be operated, but it will restore to normal when you close or finish the current configuration and connection .

Q9: How do I exit from UI?

A9: Right click the system tray icon and click “Exit” on the appearing dialog.



Q10: Now that the Tenda W326U wireless adapter's driver can be installed without the Software CD, why it still provide the CD?

A10: Some functions are missing for the drive integrated in the W326U adapter, and also the drive does not support the WPS button and AP mode, however, by installing the drive on the CD, the UI can be installed to fulfill these advanced features.

Q11: Why I can not normally use the Drive integrated in W326U under MAC operating system?

A11: W326U can only integrates the drive under Windows system, to use W326U under MAC system, please insert the W326U to the computer with MAC OS; the system will identify the adapter as a CD, pop this CD out, and then install the MAC drive included in the CD.

Technical Support

Headquarter Shenzhen:

Add:Tenda Industrial Zone,No.34-1 Shilong

Road,ShiyanTown,BaoanDistrict,Shenzhen,China. 518108

Tel:(86)755-27657180

Fax: (86)755-27657178

Email: sales@tenda.com.cn

Technical Support: support@tenda.com.cn

Appendix 5 :Regulatory Information



FCC Statement

This device complies with Part 15 of the FCC Rules. Operation is subject to the following two conditions: (1) This device may not cause harmful interference, and (2) this device must accept any interference received, including interference that may cause undesired operation.

This equipment has been tested and found to comply with the limits for a Class B digital device, pursuant to Part 15 of the FCC Rules. These limits are designed to provide reasonable protection against harmful interference in a residential installation. This equipment generates, uses and can radiate radio frequency energy and, if not installed and used in accordance with the instructions, may cause harmful interference to radio communications. However, there is no guarantee that interference will not occur in a particular installation. If this equipment does cause harmful interference to radio or television reception, which can be determined by turning the equipment off and on, the user is encouraged to try to correct the interference by one of the following measures:

- Reorient or relocate the receiving antenna.
- Increase the separation between the equipment and receiver.
- Connect the equipment into an outlet on a circuit different from

that to which the receiver is connected.

- Consult the dealer or an experienced radio/TV technician for help.

FCC Caution: Any changes or modifications not expressly approved by the party responsible for compliance could void the user's authority to operate this equipment.

This transmitter must not be co-located or operating in conjunction with any other antenna or transmitter.

The manufacturer is not responsible for any radio or TV interference caused by unauthorized modifications to this equipment.

Radiation Exposure Statement

This equipment complies with FCC radiation exposure limits set forth for an uncontrolled environment. This equipment should be installed and operated with minimum distance 20cm between the radiator & your body.

NOTE:

- (1)The manufacturer is not responsible for any radio or TV interference caused by unauthorized modifications to this equipment.
- (2) To avoid unnecessary radiation interference, it is recommended to use a shielded RJ45 cable.



CE Mark Warning

This is a Class B product. In a domestic environment, this product may cause radio interference, in which case the user may be required to take adequate measures. This device complies with EU 1999/5/EC.

NOTE:

(1) The manufacturer is not responsible for any radio or TV interference caused by unauthorized modifications to this equipment.

(2) To avoid unnecessary radiation interference, it is recommended to use a shielded RJ45 cable.

"The product can be used without restrictions in the following countries: all EU member states except France and Norway.

The product can be used with limitations in the following countries: France (for indoor use only) and Norway (20 km in the center of Ny-Llesund)."