



## Quick Installation Guide

Wireless USB Adapter  
U2/W311MI

### Package contents

- Wireless USB Adapter x 1
- Quick Installation Guide x 1

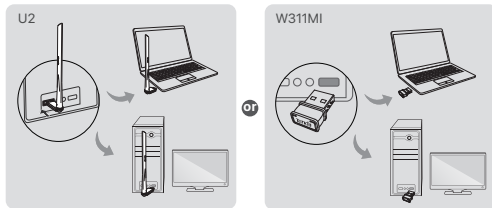
Please read this guide before you start with the quick setup upon the first use.

## Install the wireless USB adapter (Example: Windows 10)

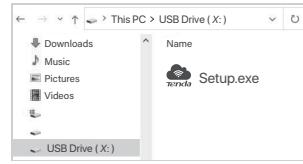


- Tips**
- This wireless USB adapter is compatible with mainstream operating systems, including Windows 7/10/11 and Linux.
  - For better internet experience, you are recommended to uninstall any installed wireless USB adapter (see **Scenario 2** in the **Appendix**) and disable or toggle off the built-in wireless adapter in the computer (see **Scenario 1** in the **Appendix**) before installing the wireless USB adapter.

1. Connect your wireless USB adapter to a USB port on your computer.



2. Double-click **Setup.exe** in the pop-up window.



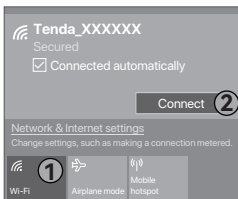
**Tips**  
If the pop-up window does not appear, refer to **Q2** in **FAQ**.

Wait a moment until the initialization finishes. Now you can connect to the Wi-Fi network.

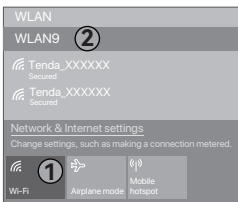


## Connect to a Wi-Fi network (Example: Windows 10)

- For computers without built-in wireless adapters: Select the desired Wi-Fi, and then click **Connect**.



- For computers with built-in wireless adapters: If you use this wireless USB adapter to connect to a Wi-Fi, select the WLAN corresponding to the wireless USB adapter, such as **WLAN9**. Then connect to the Wi-Fi.



**Tips**  
**WLAN** is the default name of the built-in wireless adapter in the computer.

## FAQ

**Q1. The computer is connected to the Wi-Fi network using the wireless USB adapter, but the Wi-Fi network often disconnects. What should I do?**

- A1.
- Connect the wireless USB adapter to your computer without the expansion dock or USB hub.
  - Plug the wireless USB adapter into another USB port on the computer.
  - Use the wireless USB adapter within the range of Wi-Fi signal coverage, and there are no surrounding occlusions blocking signals.

**Q2. The pop-up window does not appear after the wireless USB adapter is connected to the computer. What should I do?**

- A2. Example: Windows 10
1. Double-click **Computer** ( ) on the desktop.
  2. Double-click **USB Drive (X:)**, and follow the instructions to install the wireless USB adapter.

## Appendix

**Scenario 1: Disable or toggle off the built-in wireless adapter in the computer.**

- **Disable the built-in wireless adapter in the computer (Example: Windows 10)**

1. Click or , and then select **Network & Internet settings**.
2. Click **Change adapter options**.
3. Find and right-click the built-in wireless adapter in the computer, and click **Disable**.

- **Toggle off the WLAN function of the built-in wireless adapter in the computer (Only available for Windows 11)**

1. Right-click or , and then select **Network & Internet settings**.
2. Find and click **WLAN** to enter the settings page.



3. Toggle off the WLAN corresponding to the built-in wireless adapter of the computer.

**Scenario 2: Uninstall the existing wireless USB adapter driver on your computer. (Example: Windows 10)**

1. Click , and then click .
2. Click **Apps**.
3. Target and click the wireless USB adapter program you want to uninstall, and click **Uninstall**.

## Get support and services

For technical specifications, user guides and more information, please visit the product page or service page on [www.tendacn.com](http://www.tendacn.com). Multiple languages are available. You can see the product model on the product.



<https://www.tendacn.com/service/default.html>

## Operating Frequency/Max Output Power

**English:** Operating Frequency/Max Output Power  
**Polски:** Częstotliwość pracy / Maksymalna moc wyjściowa  
**Deutsch:** Betriebsfrequenz/Max. Ausgangsleistung  
**Русский:** Рабочая частота/макс. выходная мощность  
**Français:** Fréquence de fonctionnement/Puissance de sortie maximale  
**Nederlands:** Bedrijfsfrequentie/Maximaal uitgangsvermogen  
**Čeština:** Provozní frekvence/maximální výstupní výkon  
**Română:** Frecvența de funcționare/Puterea maximă de ieșire  
**Português:** Frequência de Funcionamento/Potência Máxima de Saída  
**Svenska:** Driftsfrekvens / Max Uteffekt  
**Slovensky:** Prevádzková frekvencia/maximálny výstupný výkon  
**Ελληνικά:** Συχνότητα Λειτουργίας/Μέγιστη Ισχύς Εξόδου  
**Magyar:** Működési frekvencia/Maximális kimeneti teljesítmény

**Italiano:** Frequenza operativa/Potenza di uscita massima  
**Български:** Работна честота/максимална изходна мощност  
**Español:** Frecuencia operativa/Potencia de salida máxima  
**Eesti:** Tõsagedus/Max väljundvõimsus  
**Dansk:** Driftsfrekvens/Maks. Udgangs effekt  
**Suomi:** Toimintataajuus/maksimilähtöteho  
**Hrvatski:** Radna frekvencija/Maksimalna izlazna snaga  
**Latviešu:** Operējošās frekvences/ Maksimālā jauda  
**Lietuvių:** Darbinis dažnis / maksimali išėjimo galia  
**Slovensčina:** Delovna frekvencia/Največja izhodna moč  
**Türkçe:** Çalışma Frekansı/Maks. Çıkış Gücü

عربي: تردد الأقصى لطاقة الإخراج

2412MHz-2472MHz/20dBm



### FCC Statement

This equipment has been tested and found to comply with the limits for a Class B digital device, pursuant to Part 15 of the FCC Rules. These limits are designed to provide reasonable protection against harmful interference in a residential installation. This equipment generates, uses and can radiate radio frequency energy and, if not installed and used in accordance with the instructions, may cause harmful interference to radio communications. However, there is no guarantee that interference will not occur in a particular installation. If this equipment does cause harmful interference to radio or television reception, which can be determined by turning the equipment off and on, the user is encouraged to try to correct the interference by one or more of the following measures:

- Reorient or relocate the receiving antenna.
- Increase the separation between the equipment and receiver.
- Connect the equipment into an outlet on a circuit different from that to which the receiver is connected.
- Consult the dealer or an experienced radio/TV technician for help.

Operation is subject to the following two conditions: (1) this device may not cause harmful interference, and (2) this device must accept any interference received, including interference that may cause undesired operation.

### Radiation Exposure Statement

This device complies with FCC radiation exposure limits set forth for an uncontrolled environment and it also complies with Part 15 of the FCC RF Rules. This device has been tested and comply with FCC Body SAR limits at 5mm distance.

### Caution:

Any changes or modifications not expressly approved by the party responsible for compliance could void the user's authority to operate this equipment. This transmitter must not be co-located or operating in conjunction with any other antenna or transmitter.  
 Operating frequency: 2412-2462 MHz  
**NOTE:** (1) The manufacturer is not responsible for any radio or TV interference caused by unauthorised modifications to this equipment. (2) To avoid unnecessary radiation interference, it is recommended to use a shielded RJ45 cable.



### RECYCLING

This product bears the selective sorting symbol for Waste electrical and electronic equipment (WEEE). This means that this product must be handled pursuant to European directive 2012/19/EU in order to be recycled or dismantled to minimize its impact on the environment. User has the choice to give his product to a competent recycling organization or to the retailer when he buys a new electrical or electronic equipment.



### CE Mark Warning

This is a Class B product. In a domestic environment, this product may cause radio interference, in which case the user may be required to take adequate measures.  
**NOTE:** (1) The manufacturer is not responsible for any radio or TV interference caused by unauthorized modifications to this equipment. (2) To avoid unnecessary radiation interference, it is recommended to use a shielded RJ45 cable.

### Declaration of Conformity

Hereby, SHENZHEN TENDA TECHNOLOGY CO., LTD. declares that the device is in compliance with Directive 2014/53/EU. The full text of the EU declaration of conformity is available at the following internet address:  
<https://www.tendacn.com/download/list-9.html>

LA OPERACIÓN DE ESTE DISPOSITIVO ESTA SUJETA A LAS SIGUIENTES CONDICIONES:

- Es posible que este equipo o dispositivo no cause interferencia perjudicial.
- Este equipo o dispositivo debe aceptar cualquier tipo de interferencia, incluyendo la que pueda causar su operación no deseada.

Estimado usuario: Antes de utilizar este producto lo invitamos a leer el siguiente manual para que conozca todas sus funciones y características.

Producto	NOMBRE DEL PRODUCTO: Adaptador USB Inalámbrico MODELO: U2, W311MI
PAIS DE ORIGEN: CHINA	<b>NOM</b>



### Technical Support

Floor 6-8, Tower E3, No.1001, Zhongshanyuan Road, Nanshan District, Shenzhen, China. 518052  
 Website: [www.tendacn.com](http://www.tendacn.com)  
 E-mail: [support@tenda.com.cn](mailto:support@tenda.com.cn)  
[support.us@tenda.cn](mailto:support.us@tenda.cn) (North America)  
[support.uk@tenda.cn](mailto:support.uk@tenda.cn) (United Kingdom)

### Copyright

© 2023 Shenzhen Tenda Technology Co., Ltd. All rights reserved. Tenda is a registered trademark legally held by Shenzhen Tenda Technology Co., Ltd. Other brand and product names mentioned herein are trademarks or registered trademarks of their respective holders. Specifications are subject to change without notice.