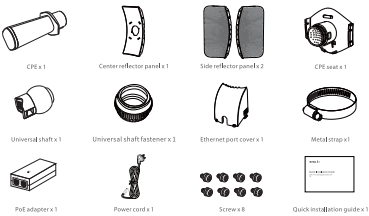


Quick Installation Guide
5GHz 11AC 23dBi Gigabit Outdoor CPE
O9

Package contents



Get to know your device

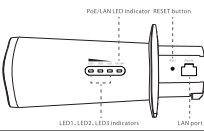


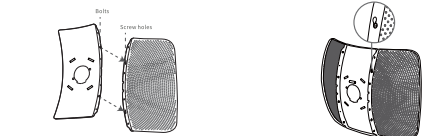
Table with 2 columns: Part/Button and Description. Rows include Reset button, RESET, PoE/LAN, and PoE/LAN LED indicator.

Table with 3 columns: Indicator, Status, and Description. Rows include PoE/LAN LED indicator and PoE/LAN.

Assemble and install the CPE

Step 1: Assemble the CPE

- Align the two bolts on one side of the center reflector panel with the long holes in the flange holes on the side reflector panel.
Report to fix another side reflector panel.
Align the slots of the CPE seat with the slanted edges of the center reflector panel and side reflector panel...



- Fix the center reflector panel with the included screws.
Insert the CPE into the CPE seat from the front side of the center reflector panel.

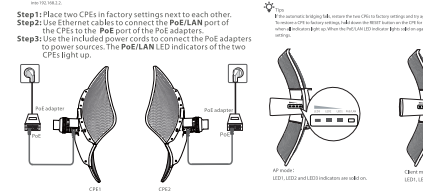


Scenario 1: CCTV surveillance or point to point data transmission

1. Set up the CPEs (AP mode + Client mode)

Option 1: Automatic bridging (recommended)

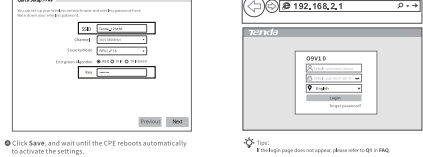
- Step 1: Place two CPEs in factory settings next to each other.
Step 2: Use Ethernet cables to connect the PoE/LAN port of the CPEs to the PoE port of the PoE adapters.



- Step 3: Use the included power cords to connect the PoE adapters to power sources.
Step 4: Set CPE2 to Client mode.

Option 2: Manual bridging

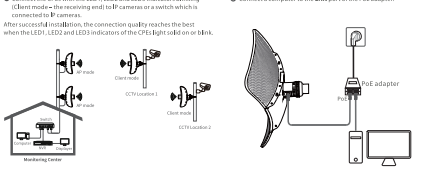
- Step 1: Power on CPE1 and connect it to a computer.
Step 2: Power on CPE2 and connect it to a computer.



Scenario 2: Wireless ISP hotspot access

2. Application scenario

- Connect the CPE with the LED1, LED2 and LED3 indicators via an AP mode (the transmitting end) to the switch which is connected to a LAN/Network Access Point.
Connect the CPE with the LED1, LED2 and LED3 indicators in Bridging (the receiving end) to the PoE adapters or a switch which is connected to P-System.



Appendix FAQ

- Q1: Cannot log in to the web UI of the CPE by entering 192.168.2.1. What should I do?
Q2: How to check that the CPEs in the best connection status?
Q3: After the bridging succeeds, the LED1, LED2 and LED3 indicators do not light up or only some of them do. What should I do?
Q4: How to set up the CPE as a wireless hotspot?
Q5: How to set up the CPE as a wireless hotspot?
Q6: How to set up the CPE as a wireless hotspot?
Q7: How to set up the CPE as a wireless hotspot?

Table with 2 columns: Wireless Status and Signal Strength. Rows include Signal strength, LED indicator, and Power status.

Recycling and FCC Statement sections. Includes text about responsible disposal and FCC compliance.

Technical Support and Copyright information. Includes contact details for Tenda Technology Co., Ltd.

CE Mark Warning and Declaration of Conformity sections. Includes safety warnings and technical specifications.

Table with 12 columns and 12 rows, likely a compliance or testing table.