

Front

410.00mm

102.50 mm

143.50 mm

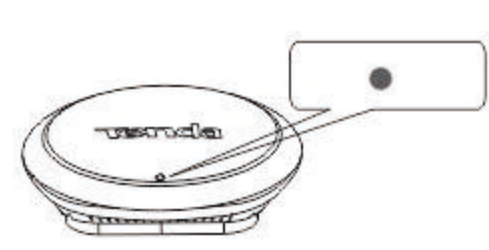
287.00mm

Tenda Install Guide

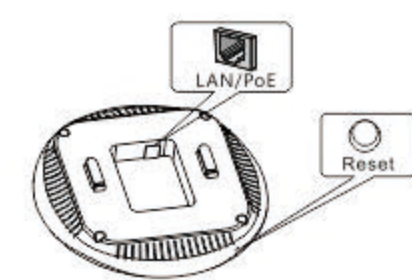
1 Package Contents



2 LEDs and Interfaces



LED	Status	Description
SYS	Blinking	The device is functioning properly.
Cell	Off	The device is receiving no electrical power or the LED is disabled manually via Web interface.
Signal	Solid	The device is functioning improperly.



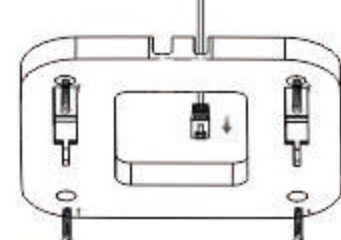
Interface/Button	Description
Reset	Press it for over 7 seconds with a needle to restore factory default settings.
LAN/PoE	Connect to an Ethernet device, such as a PC, a PoE device, etc.

Please read this install guide carefully before you start this device. For more information, visit our website at <http://www.tendacn.com>.

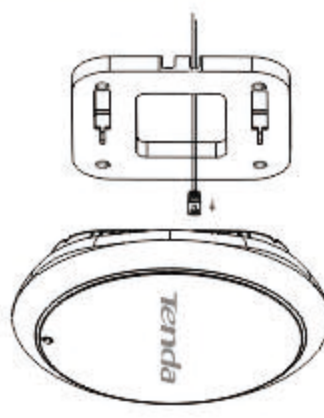
3 Installation

Connect to a PoE Device

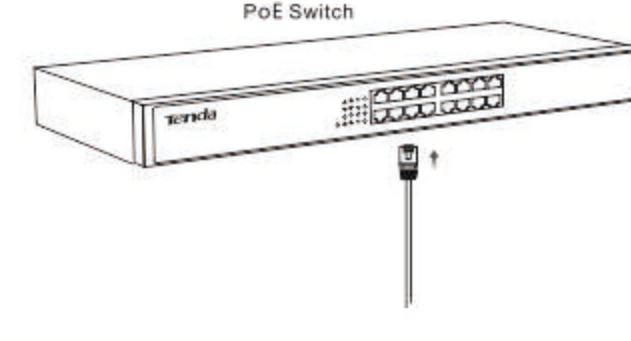
Step 1: Place the Ethernet cable into the bracket (Recommended: Cat5e, Cat5e or higher);
Step 2: Install the bracket onto the ceiling (Drill 4 holes on the ceiling, maneuver the bracket until it fits in the holes on the ceiling and then fix the bracket onto the ceiling with the provided screws.);



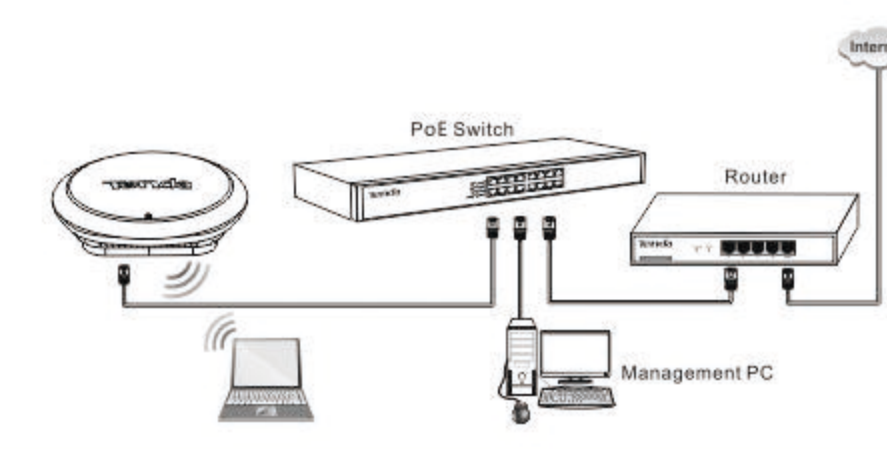
Step 3: Connect the Ethernet cable to the LAN port of the device;
Step 4: Fix the device onto the bracket;



Step 5: Connect the other end of the Ethernet cable to the PoE port on an IEEE 802.3at-compliant switch;

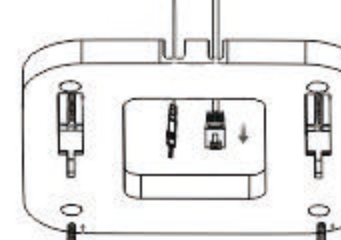


Step 6: Connected successfully!

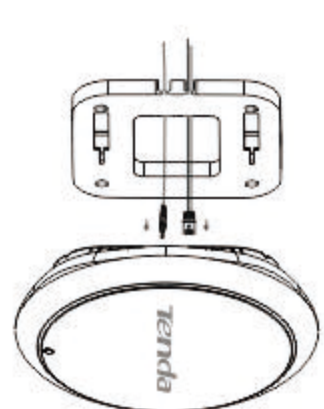


Connect to a Power Outlet with the Included Power Adapter

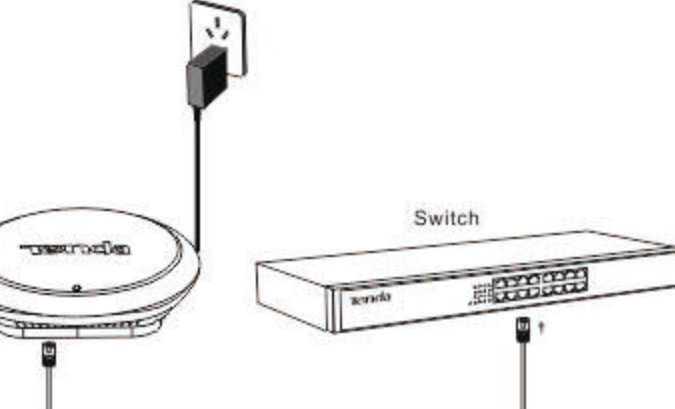
Step 1: Place the Ethernet cable and power cord into the bracket;
Step 2: Install the bracket onto the ceiling (Drill 4 holes on the ceiling, maneuver the bracket until it fits in the holes on the ceiling and then fix the bracket onto the ceiling with the provided screws.);



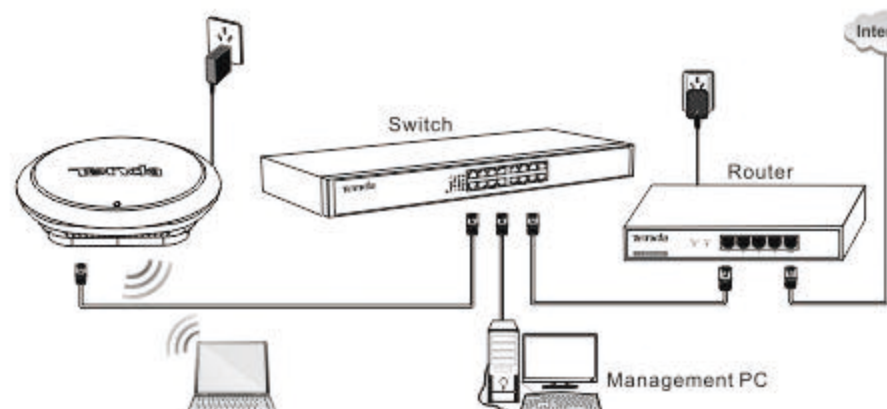
Step 3: Connect the Ethernet cable and power cord to the device;
Step 4: Fix the device onto the bracket;



Step 5: Connect the other end of the Ethernet cable to a switch and plug the included power adapter into a power outlet;



Step 6: Connected successfully!



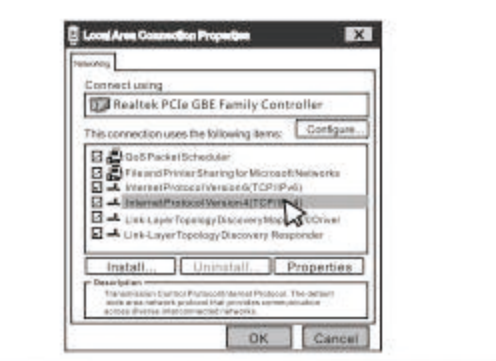
Tenda

4 Configure PC

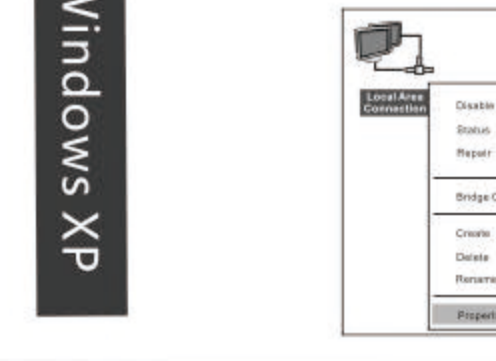
Step 1: Click the icon on the right bottom corner of your desktop;
Step 2: Click Open Network and Sharing Center;
Step 3: Click Local Area Connection -> Properties;



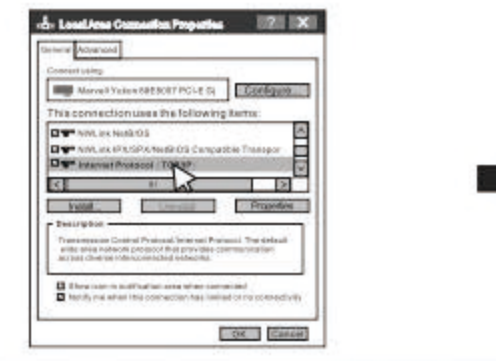
Step 4: Find and double click Internet Protocol Version 4 (TCP/IPv4);
Step 5: Select Use the following IP address, IP address: 192.168.0.X (2-253); Subnet mask: 255.255.255.0 and click OK;
Step 6: Click OK on the Local Area Connection Properties window (see Step 4 for the screenshot);



Step 1: Right click My Network Places on your desktop and select Properties;
Step 2: Right click Local Area Connection and select Properties;



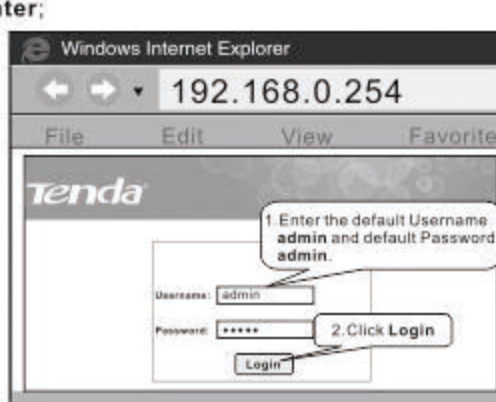
Step 3: Scroll down to find Internet Protocol (TCP/IP) and double click it;
Step 4: Select Use the following IP address, IP address: 192.168.0.X (2-253); Subnet mask: 255.255.255.0 and click OK;
Step 5: Click OK on the Local Area Connection Properties window (see Step 3 for the screenshot);



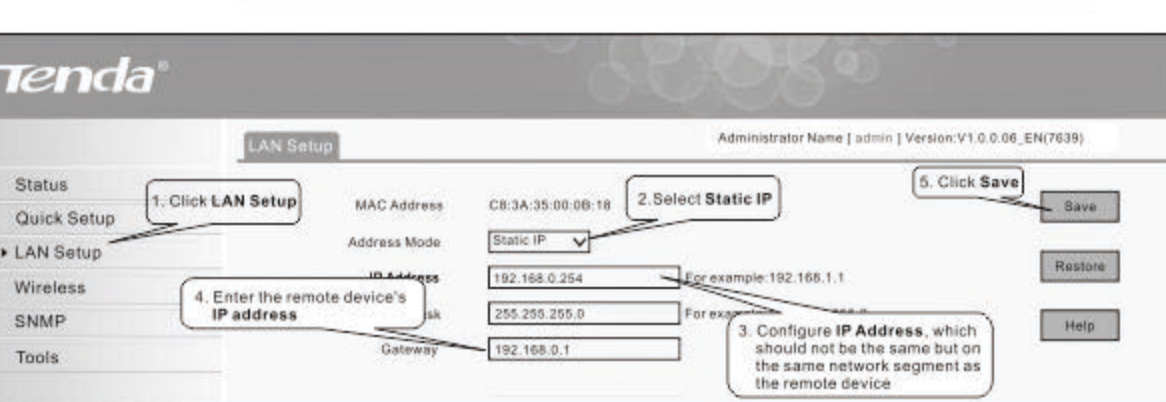
5 Configure AP

Note: After finishing settings on Quick Setup interface, please refer to 4. Configure PC to set your PC to Obtain an IP address automatically, and then you can surf the Internet.

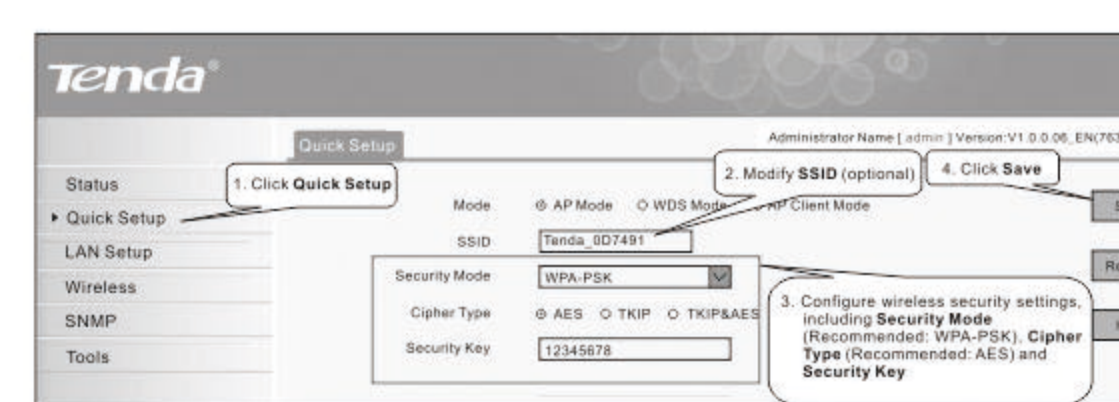
Step 1: Launch a web browser, input 192.168.0.254 in the address bar and press Enter;



Step 2: LAN Setup; **Tip:** In WDS and AP Client mode, Static IP must be selected;



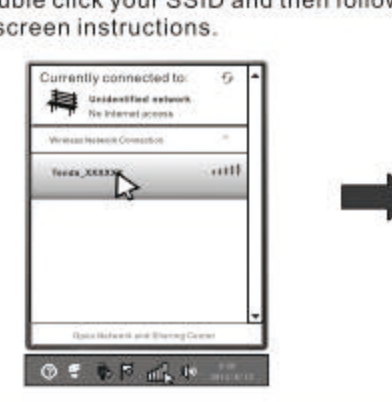
Step 3: Wireless Security Settings;



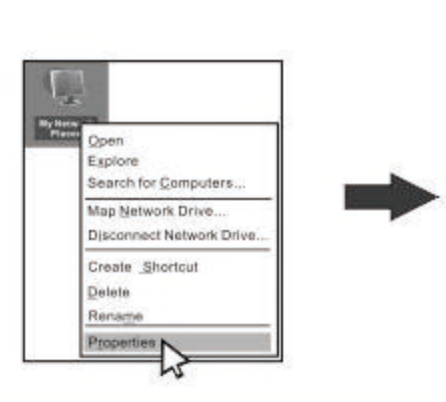
6 Wi-Fi Connection

Tip: 1. The PC you use must have an installed wireless network adapter; 2. The default wireless network name (SSID) is Tenda_XXXXX, where XXXXXX is the last six characters of the device's MAC address. You can find the MAC address on the label at the bottom of this device.

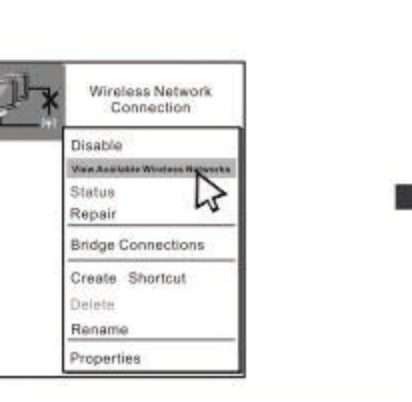
Step 1: Click the icon on the right bottom corner of your desktop;
Step 2: Double click your SSID and then follow onscreen instructions;



Step 1: Right click My Network Places on your desktop and select Properties;



Step 2: Right click Wireless Network Connection and select View Available Wireless Networks;



Step 3: Find and double click your SSID and then follow onscreen instructions;



FAQS

Q1: I enter the device's LAN IP address in the web browser but cannot access the utility. What should I do?

- Check the TCP/IP settings on your PC and verify that the IP address is 192.168.0.X (2-253);
- Clear the browser cache or try another web browser;
- Ensure the wireless NIC is functioning properly.

If you are still unable to login, please restore the device to factory default settings and follow the install guide to configure all settings again.

Q2: What should I do if I cannot find the wireless signal?

- Ensure the wireless feature on your PC is enabled;
- Ensure the device is receiving electrical power;
- Ensure no huge metal objects or other severe interferences (cordless telephones or microwaves, etc.) around.

Q3: Wireless connection shows "Connected" but I cannot access the Internet. What should I do?

- Verify that you are connecting to a right SSID;
- Verify that you have set your PC to Obtain an IP address automatically;
- Verify that other wireless devices (such as smart phones) connecting to this device can access the Internet.

FC

FC Statement
This equipment complies with Part 15 of the FCC Rules. Operation is subject to the following two conditions: (1) This device may not cause harmful interference, and (2) this device must accept any interference received, including interference that may cause undesired operation.
This equipment has been tested and found to comply with the limits for a Class B digital device, pursuant to Part 15 of the FCC Rules. These limits are designed to provide reasonable protection against harmful interference in a residential installation. This equipment generates, uses and can radiate radio frequency energy and, if not installed and used in accordance with the instructions, may cause harmful interference to radio communications. However, there is no guarantee that interference will not occur in a particular installation. If this equipment does cause harmful interference to radio or television reception, which can be determined by turning the equipment off and on, the user is encouraged to try to correct the interference by one of the following measures:
— Reorient or relocate the receiving antenna.
— Increase the separation between the equipment and receiver.
— Connect the equipment into an outlet on a circuit different from that to which the receiver is connected.
— Consult the dealer or an experienced radio/TV technician for help.
FCC Caution: Any changes or modifications not expressly approved by the party responsible for compliance could void the user's authority to operate this equipment.
This transmitter must not be co-located or operating in conjunction with any other antenna or transmitter.
The manufacturer is not responsible for any radio or TV interference caused by unauthorized modifications to this equipment.
Radiation Exposure Statement
This equipment complies with FCC radiation exposure limits set forth for an uncontrolled environment. This equipment should be installed and operated with minimum distance 20cm between the radiator & your body.
NOTE: (1) The manufacturer is not responsible for any radio or TV interference caused by unauthorized modifications to this equipment. (2) To avoid unnecessary radiation interference, it is recommended to use a shielded RJ45 cable.

CE

CE Mark Warning
This is a Class B product. In a domestic environment, this product may cause radio interference, in which case the user may be required to take adequate measures. This device complies with EN 15713:2009.
NOTE: (1) The manufacturer is not responsible for any radio or TV interference caused by unauthorized modifications to this equipment. (2) To avoid unnecessary radiation interference, it is recommended to use a shielded RJ45 cable.

Shenzhen Tenda Technology Co., Ltd.
6-8 Floor, Tower E3, No. 1001, Zhongshanyuan Road, Nanshan District, Shenzhen, China, 518052
Phone: (86 755) 2765 7180
Fax: (86 755) 2765 7178
E-mail: sales@tenda.com.cn
support@tenda.com.cn
Website: <http://www.tendacn.com>

Rear