



# Quick Installation Guide

## Ceiling AP Series

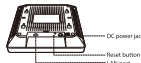
### Package contents

- Wireless AP x 1
  - Bracket x 1
  - Accessories (Screws, plastic nuts, and plastic anchors)
  - Quick installation guide x 1
- Please refer to the corresponding diagram for the signal topology and the location of the AP in the network. The Quick Installation Guide is for installation reference only. For more product information, please refer to the user manual.

## 1. Getting to know your AP



LED Indicator	Applies to	Description
SYS	LED on	The system is starting. The wireless indicator lights when the system is ready.
SYS	Blinking	The system is working normally.
SYS	LED off	The AP is in a power-saving mode. The LED indicator has been turned off.



Port/Function	Description
LAN	Use the LAN port to connect the AP to a network switch or a PC. The LAN port is used to supply PoE power for the AP using Ethernet cables.
RESET	Press the RESET button to restore the AP to factory default settings.
PWR	DC power jack. Insert a power adapter to supply power for the AP.

**Caution:** The power specification may vary. Before powering on, check if the power sourcing equipment you use complies with your AP.

## 2. Installing your AP

**Note:** You may need a rubber hammer, a hammer drill, a screwdriver, and a ladder for the installation. Please prepare them first!

### Ceiling installation

1. Position the bracket on the ceiling and mark screw holes on the ceiling with the marker.

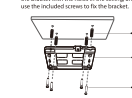
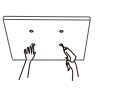
2. Drill holes in the marked position using a hammer drill.

3. **Option A:** Fix the plastic anchors into the holes using the rubber hammer. Align the screw holes in the bracket with the holes in the ceiling, and then use the included screws to fix the bracket.

4. **Option B:** Align the plastic nuts with the holes in the ceiling, and then use the included screws to fix the bracket.

5. Connect a CAT5 or better cable to the LAN port of the AP. Connect a PoE switch to the PoE port, or a power injector to the PWR jack to supply power for the AP.

6. Before powering on, check if the power sourcing equipment you use complies with your AP.



### Wall mounting

1. Position the bracket on the wall, and mark screw holes on the wall with the marker.

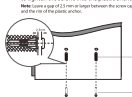
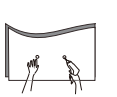
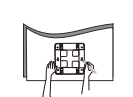
2. Drill holes in the marked position using a hammer drill.

3. Knock the plastic anchors into the hole using the rubber hammer. Then use the screwdriver to align the screws into the plastic anchors.

4. Connect a CAT5 or better cable to the LAN port of the AP. Connect a PoE switch to the PoE port, or a power injector to the PWR jack to supply power for the AP.

5. Before powering on, check if the power sourcing equipment you use complies with your AP.

6. Insert the slots of the AP into the hooks of the bracket, and push the AP to one side until you hear a click.



## 3. Connecting and Configuring your APs

### Scenario 1: Deploying your network without a management device for Tenda AP

**Note:** Connect and configure your APs one by one. That is to say, connect one AP to your PoE switch and configure it. After that, connect the second AP and repeat it until all APs.

#### 1. Connect devices

Connect your AP to a PoE port of the PoE switch using an Ethernet cable.

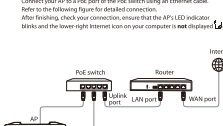
Configure the IP address of your computer (Example: Win10). Right-click the network icon on the lower right corner of your computer. Click **Network and Sharing Center > Change adapter settings**. Right-click the Ethernet. Then **Properties**. Under **Use Internet Protocol Version 4 (TCP/IPv4)**, select **Use the following IP address**, and fill in the IP address: 192.168.0.1, the DNS and Subnet mask to 255.255.255.0, and a default GW.

#### 2. Log in to the web UI of the AP

Start a web browser on your computer, and access 192.168.0.254.

Choose **Internet Settings > LAN Setup**. Modify the IP address of the AP to 192.168.0.1, click **OK**, and ensure that the new IP address has not been used in this network. Then click **Save**.

**Example:** You can set the new IP address of the AP to 192.168.0.1, and the new IP address of the second AP to 192.168.0.2.



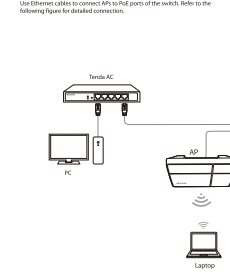
**Tip:** If you are connecting to the web UI of the AP when it is in a factory default state, the SSID you set is in the factory default state. The SSID you set is in the factory default state. The SSID you set is in the factory default state.

### Scenario 2: Deploying your network with a Tenda access controller (AC)

**1. Connect devices** Use Ethernet cables to connect APs to PoE ports of the switch. Refer to the following figure for detailed connection.

#### 2. Configure APs

Start a web browser on your computer and log in to the web UI of the AC. Refer to your AC's user guide for detailed instructions.

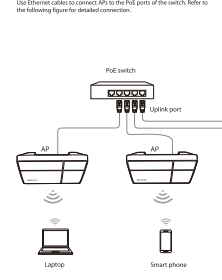


### Scenario 3: Deploying your network with a Tenda router that includes the AC functionality

**1. Connect devices** Use Ethernet cables to connect APs to the PoE ports of the switch. Refer to the following figure for detailed connection.

#### 2. Configure APs

Start a web browser on your computer and log in to the web UI of your Tenda router. Refer to the router's user guide for detailed instructions.



## FAQ

### Q1: I cannot access the web UI of the AP after entering 192.168.0.254.

- A1:** Try the following solutions:
- Check if your Ethernet cables are connected properly. If yes, the corresponding LED indicator lights up.
  - Ensure that the IP address of your computer has been set to 192.168.0.1, the DNS and the IP address is not used by any other devices in the network.
  - Clear the cache of your web browser or replace the web browser.
  - Disable the firewall of your computer, or replace the computer.
  - If more than one AP is connected to the network without an AC, you should stop only one AP in the network first and configure the AP's IP address. Then repeat this procedure to change the IP address of the other APs. Meanwhile, ensure that the AP's new IP address are in the same network segment with the IP address of your computer. Then log in to the AP's web UI using their new IP addresses.
  - The AP may be being managed by an AC, and meanwhile its IP address is no longer 192.168.0.254. In this case, go to the web UI of the AC to view the new IP address of the AP, and then log in to the AP's web UI using the new IP address.
  - If the problem persists, reset the AP.

### Q2: My wireless AC cannot find the AP. What should I do?

- A2:** Try the following solutions:
- Check if you use the Tenda AC. The AP can only be managed by Tenda AC.
  - Ensure that all the devices in the network are connected properly and the AP has completed startup.
  - If APs have been identified by your network, verify that the corresponding VLAN has been added to your AC.
  - Reset the AP.
  - Ensure that the firmware versions of your AP and AC are the same with the latest firmware version available on <http://www.tenda.com>.
  - Reset your AP.

### Q3: How to upgrade my AP?

- A3:** Perform as follows:
1. Choose your firmware version and download it from our official website: <http://www.tenda.com>.
  2. Upload the file on the web UI.
  3. Log in to the web UI of the AP. Choose **Tools > Maintenance**, and navigate to the **Firmware Upgrade** screen. Click **Upgrade**.
  4. After successful upgrade, reset your AP to apply your settings.
- Q4: How to reset my AP?**
- A4:**
- Option 1:** Reset using the RESET button. When the SYS LED indicator of the AP blinks, hold down the RESET button for about 8 seconds. The AP is reset successfully when the SYS LED indicator lights solid on.
- Option 2:** Restoring using the web UI. Log in to the web UI of the AP. Choose **Tools > Maintenance**, and navigate to the **Reset** screen, then follow the on-screen instruction to reset it.
- Note:** Restoring clears all configurations of your AP.

## CE

**CE Mark Warning**

This is a Class B product. In a domestic environment, this product may cause radio interference, in which case the user may be required to take adequate measures. This equipment should be installed and operated with minimum distance 20cm between the device and your body.

The main plug is your disconnected device. The disconnected device shall remain readily operable.

**NOTE:** The manufacturer is not responsible for any radio or TV interference caused by unauthorized modifications to this equipment. It is recommended to use a shielded LAN cable.

## RECYCLING

This product bears the selective sorting symbol for waste electrical and electronic equipment (WEEE). This means that this product must be handled pursuant to European Directive 2012/19/EU in order to be recycled or dismantled to minimize its impact on the environment.

User has the choice to give his product to a competent receiving organization or to the retailer where he buys a new electrical or electronic equipment.

**Declaration of Conformity**

Herby, SHENZHEN TENDA TECHNOLOGY CO., LTD. declares that the radio equipment type 254 is in compliance with Directive 2014/53/EU.

The full text of the EU Declaration of Conformity is available at the following internet address: [http://www.tenda.com/service/download\\_date107.html](http://www.tenda.com/service/download_date107.html)

Operating Frequency	2.4GHz, 5GHz, 6GHz	5GHz S15	5.25GHz
Power (Max.)	1W EIRP (Max.)		
Software Version	SR2.22.800m		

## FCC

**FCC Statement**

This equipment has been tested and found to comply with the limits for a Class B digital device, pursuant to Part 15 of the FCC Rules. These limits are designed to provide reasonable protection against harmful interference in a residential installation. This equipment generates, uses, and can radiate radio frequency energy and, if not installed and used in accordance with the instructions, may cause harmful interference to radio communications. However, there is no guarantee that interference will not occur in a particular installation. If this equipment does cause harmful interference to radio or television reception, which can be determined by turning the equipment off and on, the user is encouraged to try to correct the interference by one or more of the following measures:

- Reorient or relocate the receiving antenna.
- Increase the separation between the equipment and receiver.
- Connect the equipment to an outlet on a circuit different from that to which the receiver is connected.
- Consult the dealer or an experienced radio/TV technician for help.

The device is for indoor usage only.

The Operator is subject to the following two conditions: (1) this device may not cause harmful interference, and (2) this device must accept any interference received, including interference that may cause undesired operation.

**Radiation Exposure Statement**

This device complies with FCC radiation exposure limits set forth for an uncontrolled environment and also complies with Part 15 of the FCC's Rules. This equipment should be installed and operated with minimum distance 20cm between the device and your body.

**Caution:** Any changes or modifications not expressly approved by the party responsible for compliance could void the user's authority to operate this equipment. This transmitter must not be located or operating in conjunction with any other antenna or transmitter.

Operating frequency: 2.4GHz, 5GHz, 6GHz, 5.15, 5.25GHz, 5.25, 5.835GHz

**NOTE:** The manufacturer is not responsible for any radio or TV interference caused by unauthorized modifications to this equipment. It is advised to use shielded radiation interference. It is recommended to use a shielded LAN cable.

Operating temperature: -10°C ~ 40°C  
 Operating humidity: 10% ~ 90% RH, non-condensing  
 Storage temperature: -20°C ~ 70°C  
 Storage humidity: 5% ~ 95% RH, non-condensing

For EUREP, this product can be used in the following countries:

AT	BE	BG	CZ	DE	DK	EE	FI	FR	GB	GR	IT	PL	PT	RO	SI	SK	SE	TR	US
----	----	----	----	----	----	----	----	----	----	----	----	----	----	----	----	----	----	----	----

Using two screws, the AP is PAL225mm for mounting.

**Technical Support**

Shenzhen Tenda Technology Co., Ltd.  
 6A Floor, Tower C3, NO.101, Zhongyuan Plaza, Nanshan District, Shenzhen, China, 518052  
 USA: 800-858-8888  
 Tel: 86-755-2619-0001  
 Fax: 86-755-2619-0002  
 E-mail: [service@tenda.com](mailto:service@tenda.com)  
 Website: <http://www.tenda.com>  
 © 2017 Shenzhen Tenda Technology Co., Ltd. All rights reserved.

**Copyright**

© 2017 Shenzhen Tenda Technology Co., Ltd. All rights reserved.  
 Tenda is a registered trademark of Tenda Technology Co., Ltd. Other brand and product names mentioned herein are trademarks or registered trademarks of their respective holders. Specifications are subject to change without notice.