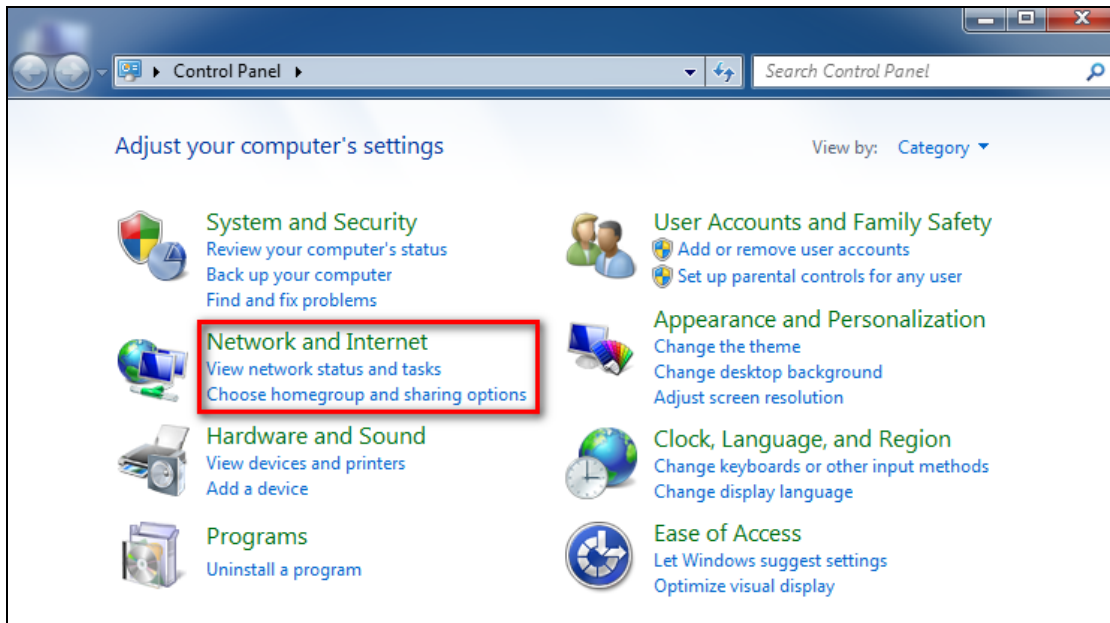
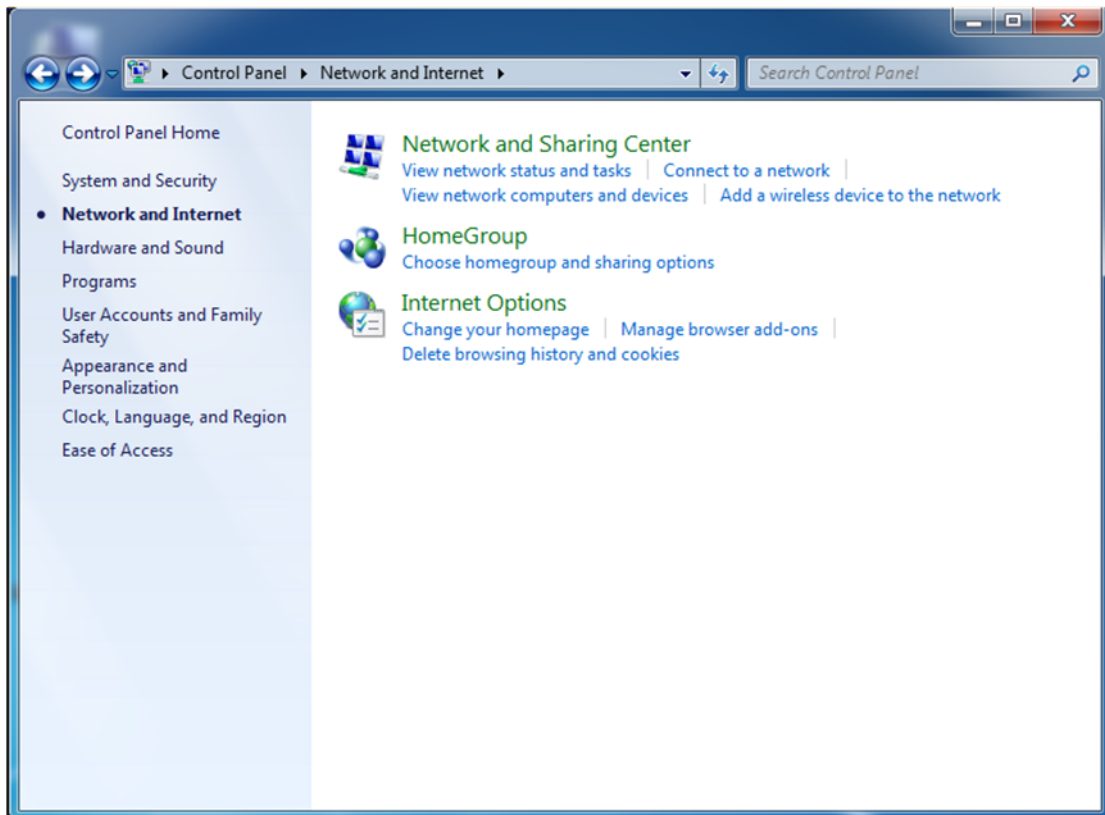


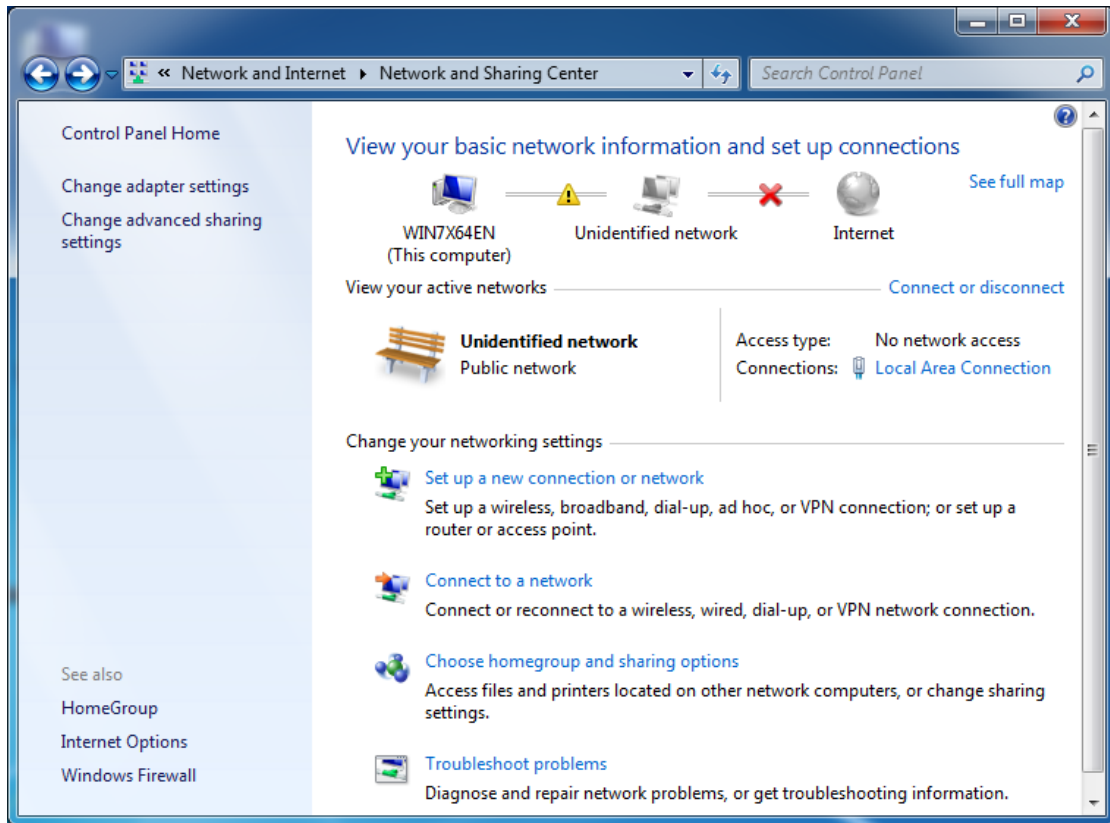
② Click **Network and Internet**.



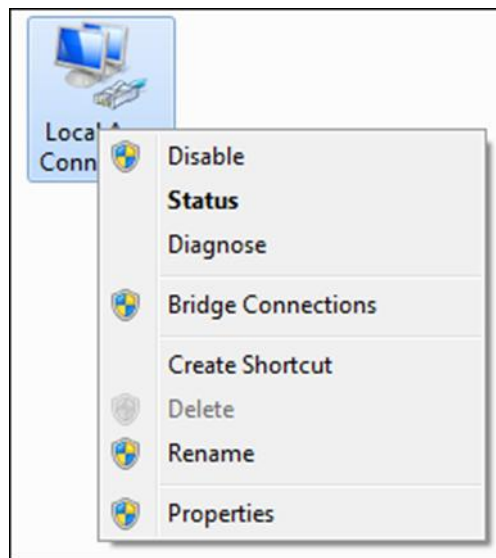
③ Click **Network and Sharing Center**.



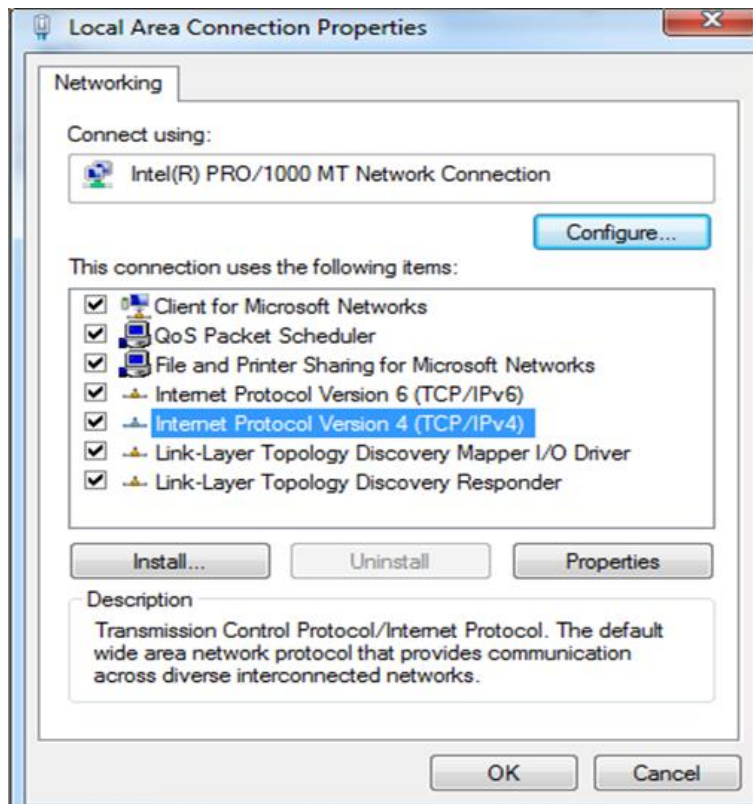
④ Click **Change adapter settings**.



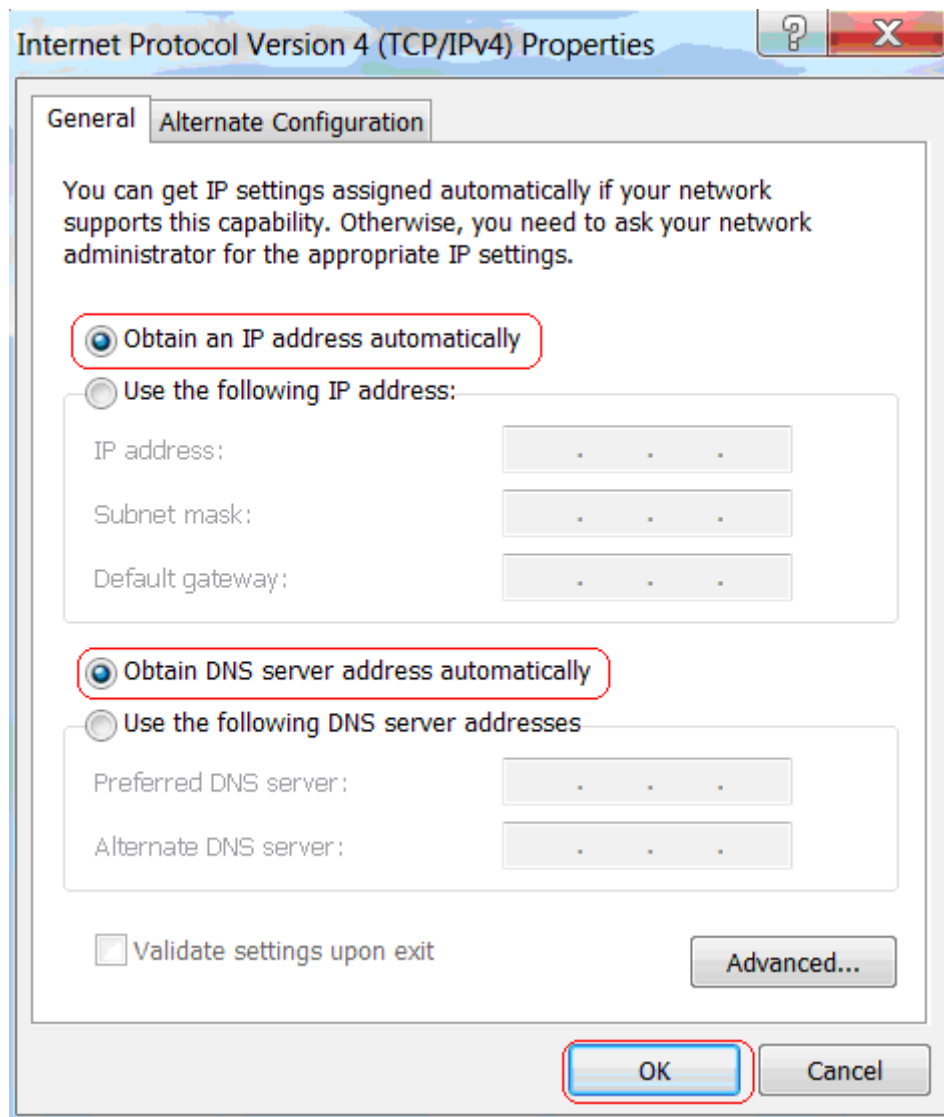
⑤ Click **Local Area Connection** and select **Properties**.



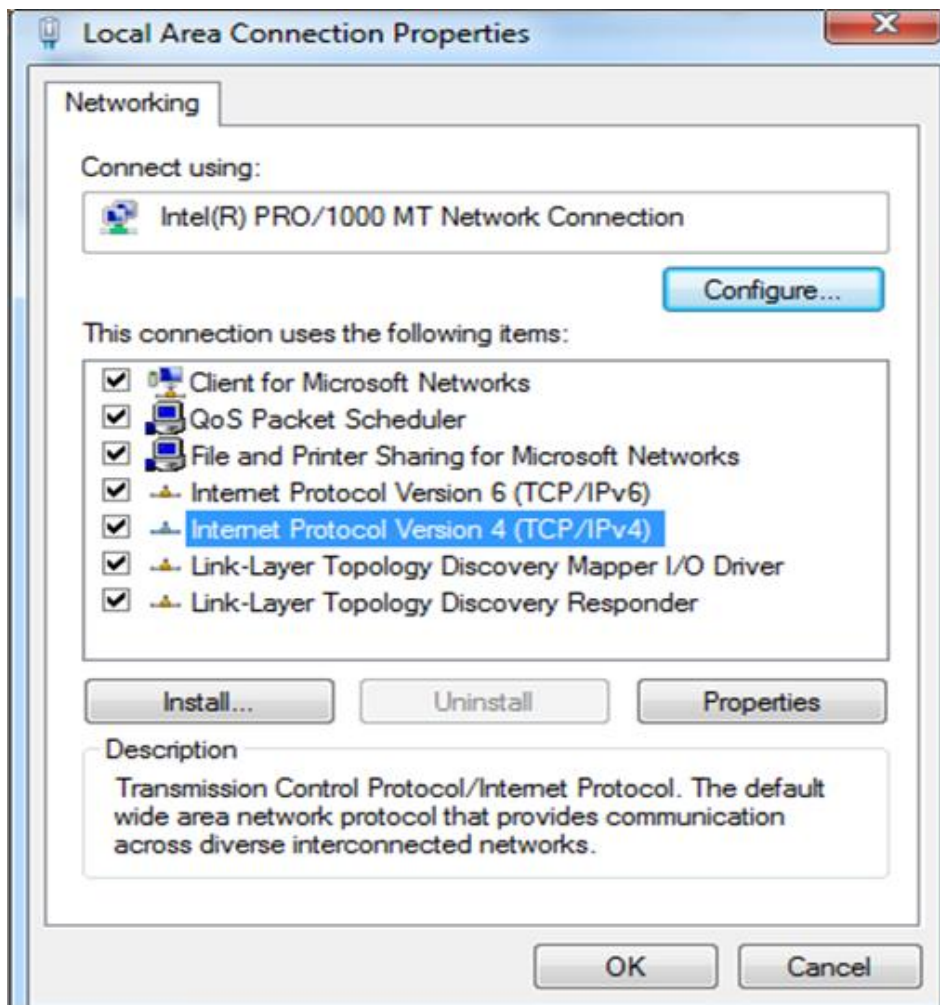
- ⑥ Select **Internet Protocol Version 4 (TCP/IPv4)** and click **Properties**.



- ⑦ Select **Obtain an IP address automatically** and click **OK**.

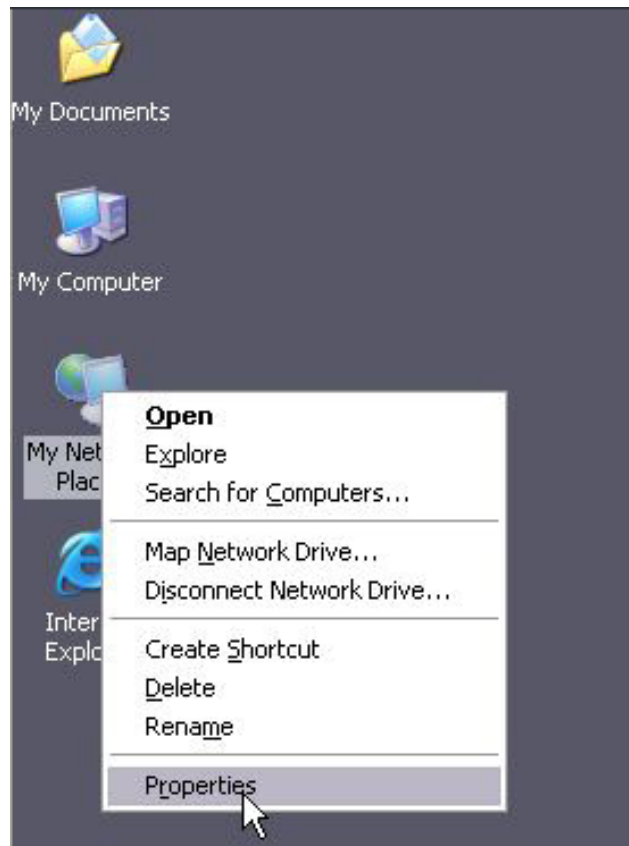


④ Click **OK** on the **Local Area Connection Properties** window to save your settings.



Windows XP

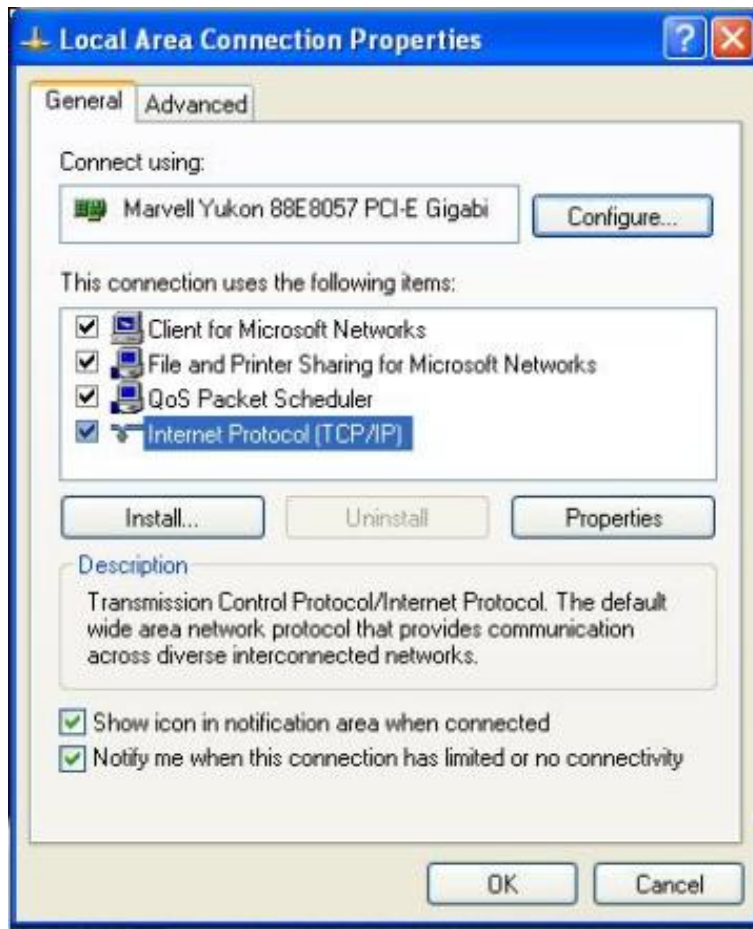
- ① Right-click **My Network Places** and select **Properties**.



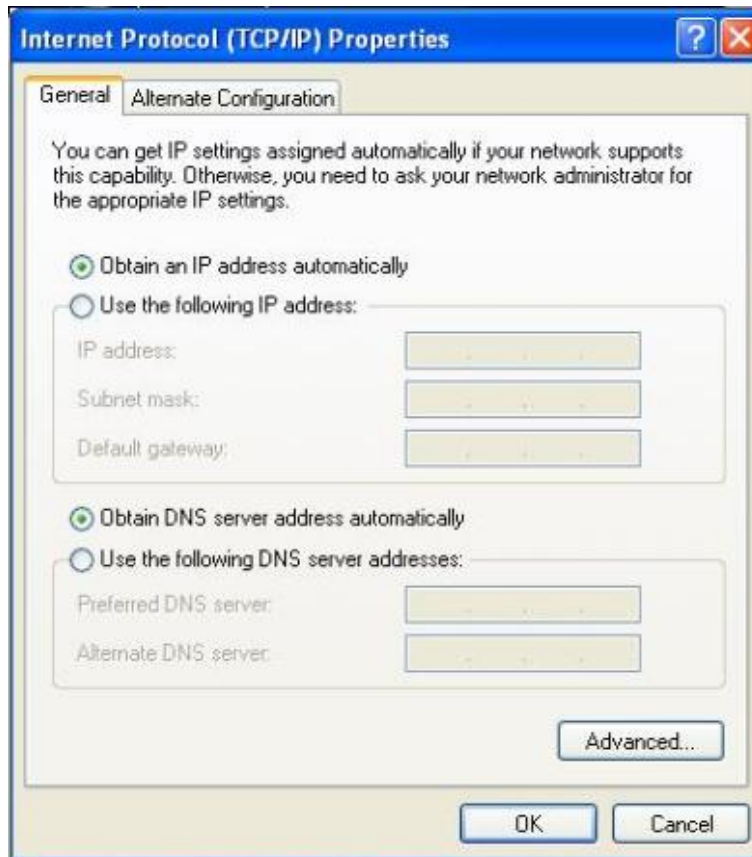
- ② Right click **Local Area Connection** and select **Properties**.



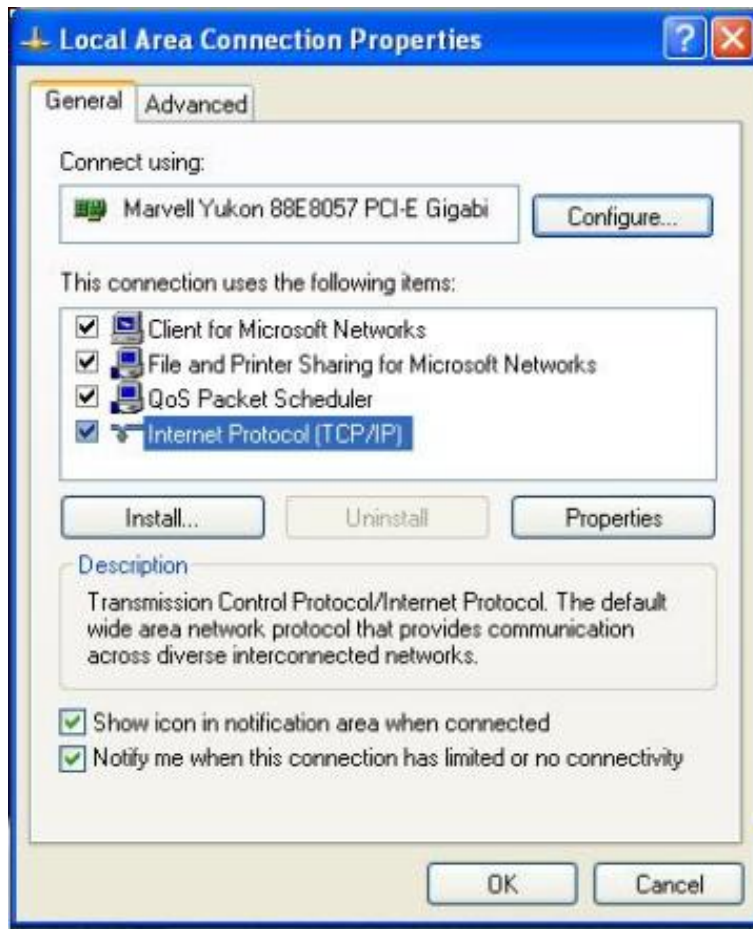
- ③ Select **Internet Protocol Version 4 (TCP/IPv4)** and click **Properties**.



- ④ Select **Obtain an IP address automatically** and click **OK**.



⑥ Click **OK** on the **Local Area Connection Properties** window to save your settings.



Appendix 2 Join Your Wireless Network

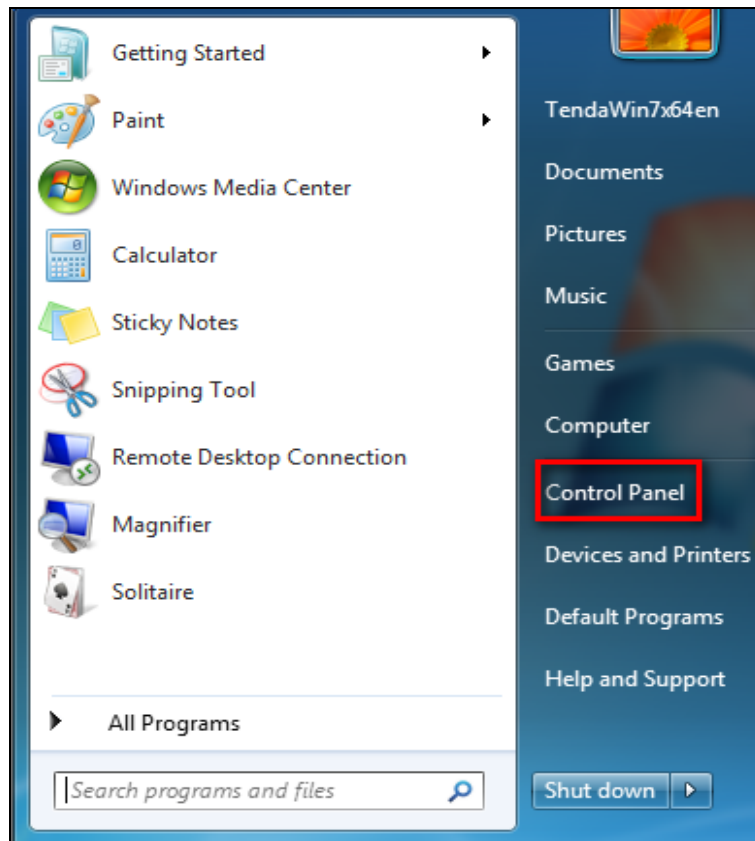


Tip -----

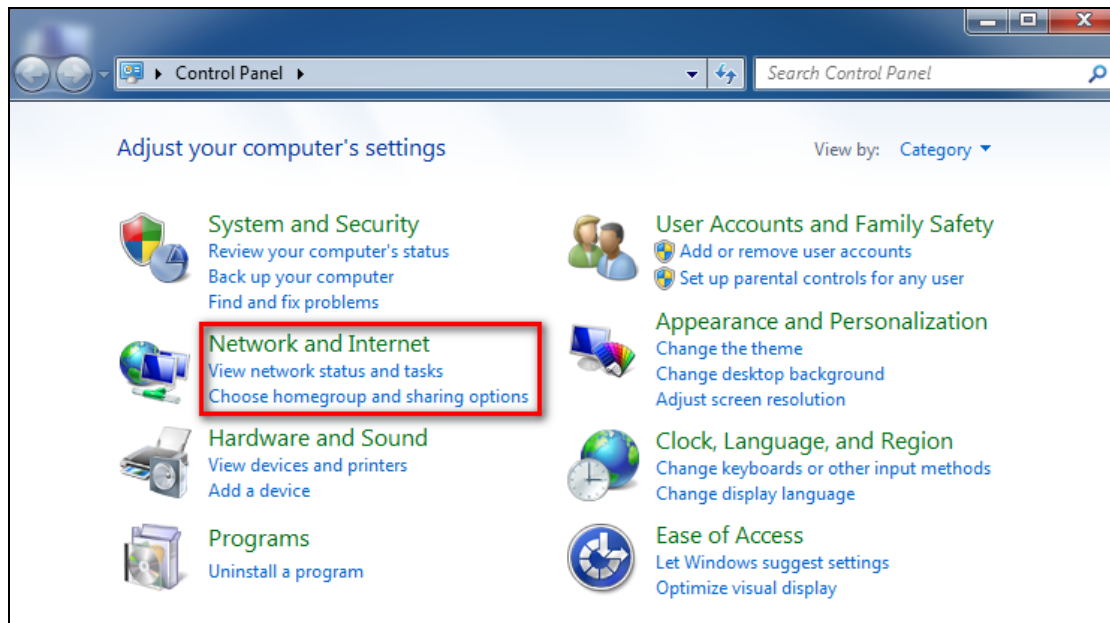
To join your wireless network, the PC you use must have an installed wireless network adapter. If not, install one.

Join Your Wireless Network - Windows 7

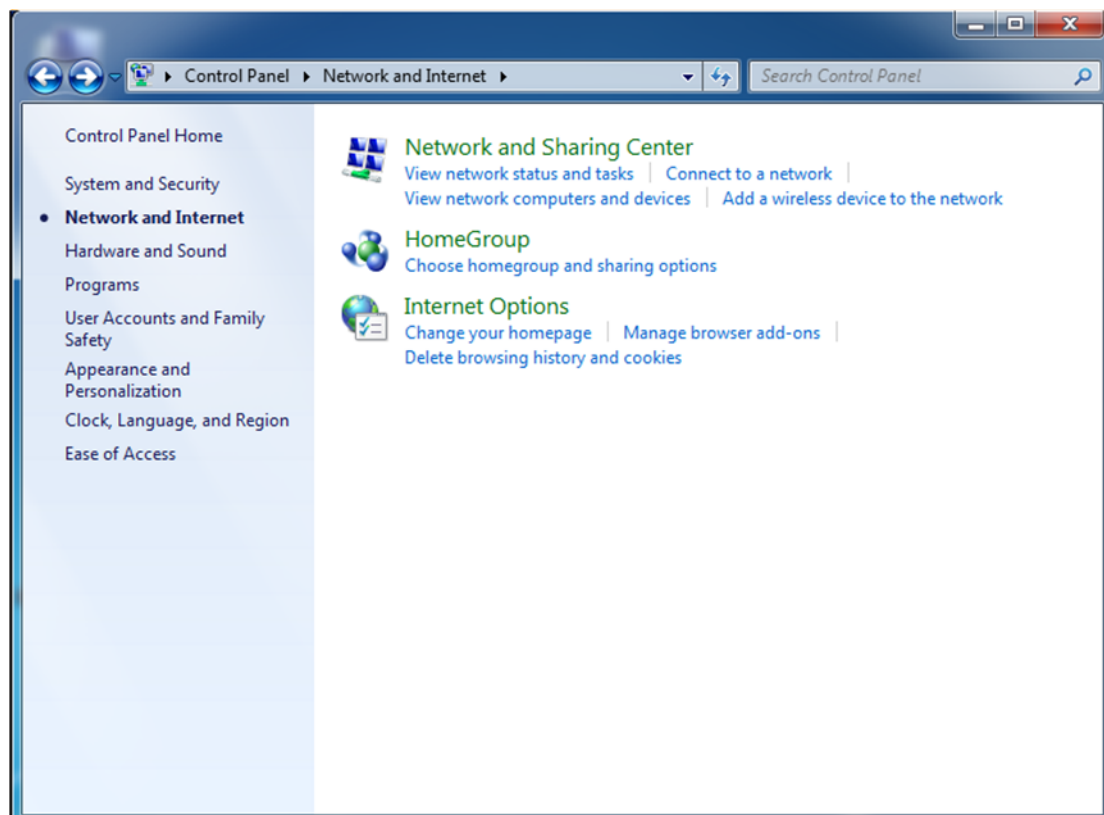
- ① Click **Start -> Control Panel**.



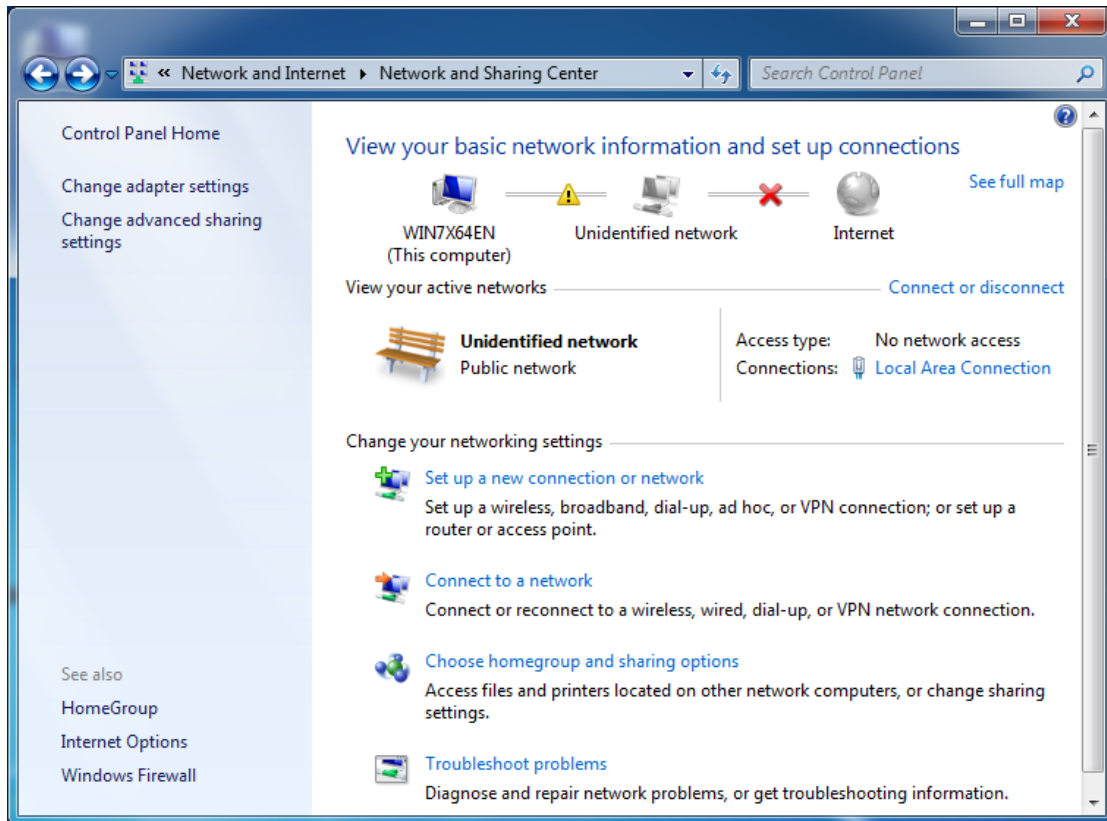
- ② Click **Network and Internet**.



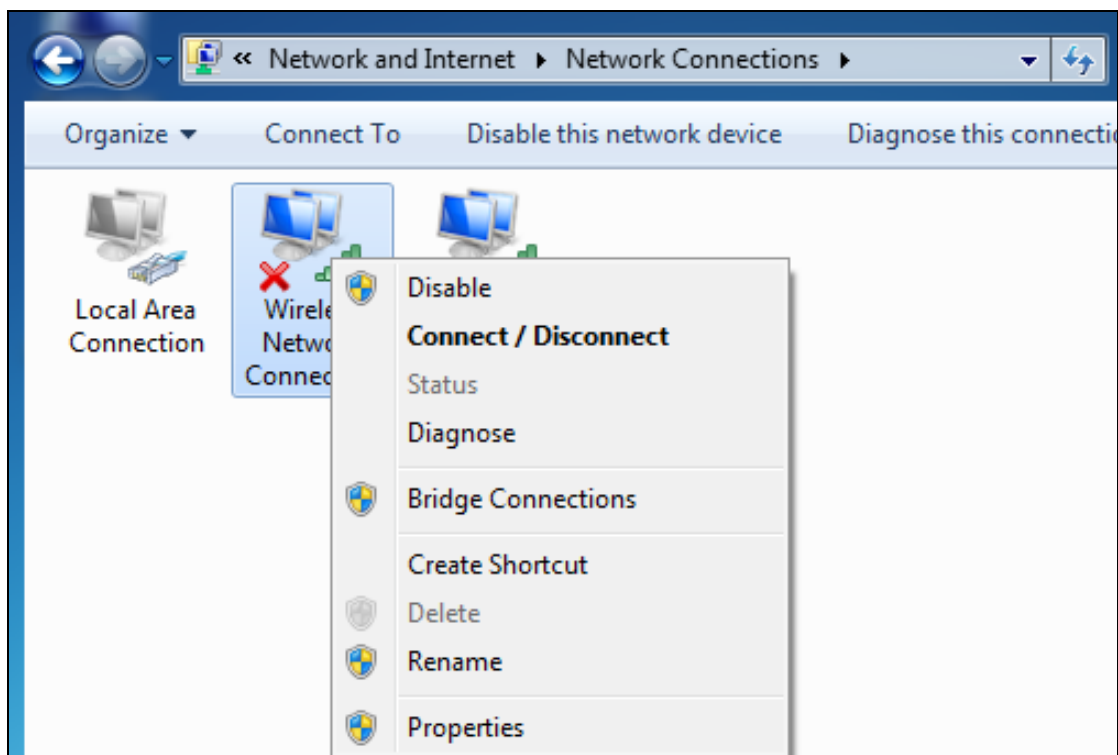
- ③ Click **Network and Sharing Center**.



④ Click **Change adapter settings**.

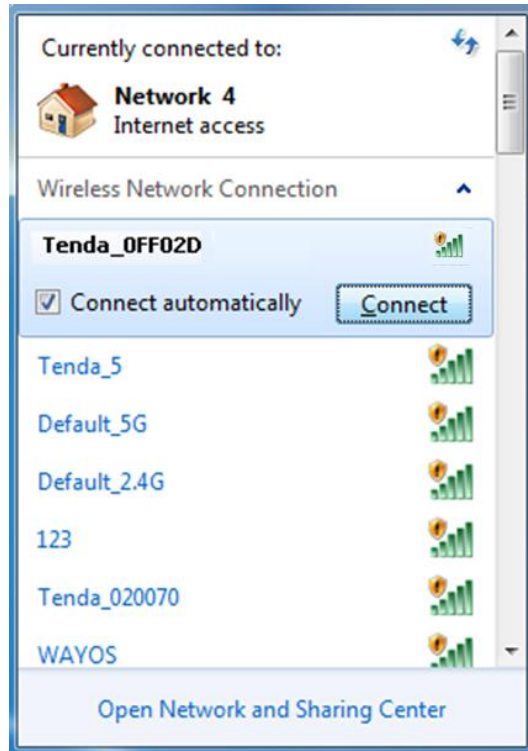


⑤ Right click the **Wireless Network Connection** and select **Connect/Disconnect**.



⑥ Select the wireless network you wish to connect and click **Connect**. Depending on whether you are joining a secured or unsecured wireless network, you will see different screens:

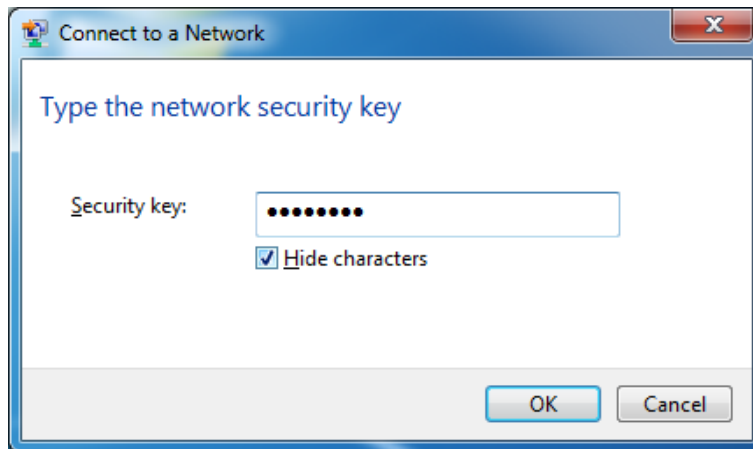
A. If you are joining an unsecured wireless network as seen below:



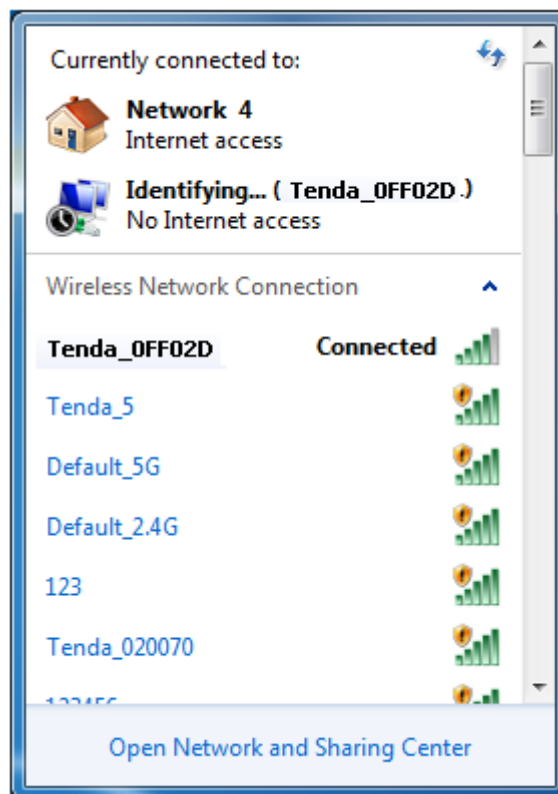
B. If you are joining a secured wireless network as seen below:



You are required to enter a security on the following screen. Enter the security key and click **OK**.



⑦ When you see **Connected** displayed next to the wireless network you selected, you have connected to the wireless network successfully.



Appendix 3 Factory Default Settings

Item	Default Settings	
Router Login	Login IP Address	192.168.0.1
Network Settings	Internet Connection Type	DHCP
	MAC Address	Find it on the label attached to the bottom of your device.
	MTU	PPPoE: 1450 Dynamic IP: 1450 Static IP: 1450
	WAN Speed	Auto-negotiation
	DNS	Disabled
LAN Settings	IP Address	192.168.0.1
	Subnet Mask	255.255.255.0
	DHCP Server	Enabled
	IP Pool	192.168.0.100~192.168.0.200
	Time Zone	(GMT+08:00)Beijing, Chongqing, Hong Kong, Urumq
	Set Time and Date manually	Disabled
Wireless Settings	Wireless	Enabled
	Primary SSID (Network Name)	Tenda_XXXXXX (XXXXXX is the last six characters in the device's MAC address)
	Wireless Extender	Disabled
	Network Mode	11b/g/n mixed
	SSID Broadcast	Enabled
	AP Isolation	Disabled
	Channel	Auto
	Channel Bandwidth	20/40
	Extension Channel	Auto
	WMM Capable	Enabled
	APSD Capable	Disabled
	Security Mode	None
WPS	Disabled	
Tools	Remote Web Management	Disabled
	Login Password	None
Others	Bandwidth Control	Disabled
	Traffic Statistics	Disabled
	DMZ Host	Disabled

	UPnP	Enabled
	Security	Disabled

Appendix 4 FAQs

This section provides solutions to problems that may occur during installation and operation of the device. Read the following if you are running into problems.

If your problem is not covered here, please feel free to go to www.tendacn.com to find a solution or email your problems to: support@tenda.com.cn or support02@tenda.com.cn. We will be more than happy to help you out as soon as possible.

1. Q: I cannot access the device's management interface. What should I do?

- Make sure the power LED on the device's front panel is on and the SYS LED blinks normally.
- Make sure all cables are correctly connected and the corresponding LAN LED on the device is on.
- Verify that your PC's TCP/IP settings are configured correctly. If you select the "Use the following IP address" option, set your PC's IP address to any IP address between 192.168.0.2~192.168.0.254. Or you can select the "Obtain an IP address automatically" option.
- Check the IP address you entered in your browser. It should be `http://192.168.0.1`.
- Open your browser and click **Tools -> Internet Options -> Connections -> LAN settings**, uncheck the **Use a proxy server for your LAN** option.
- Press the WPS/RST button for over 7 seconds to restore your device to factory default settings. Then log to your device again.

2. Q: I changed the login password and unfortunately forget it. What should I do?

Press the WPS/RST button for over 7 seconds to restore your device to factory default settings.

3. Q: My computer shows an IP address conflict error after having connected to the device. What should I do?

- Make sure there are no other DHCP servers on your LAN or other DHCP servers are disabled.

- Make sure the device's LAN IP is not used by other devices on your LAN. The device's default LAN IP address is 192.168.0.1.
- Make sure the statically assigned IP addresses to the PCs on LAN are not used by others PCs.

4. Q: I have problems connecting to Internet/Secure websites do not open or displays only part of a web page. What should I do?

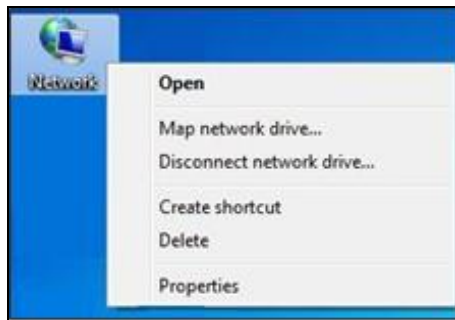
This problem mainly happens to users who use the PPPoE or Dynamic IP Internet connection type. You need to change the MTU size. Try changing the MTU to 1450 or 1400. If this does not help, gradually reduce the MTU from the maximum value until the problem disappears.

Appendix 5 Remove Wireless Network from Your PC

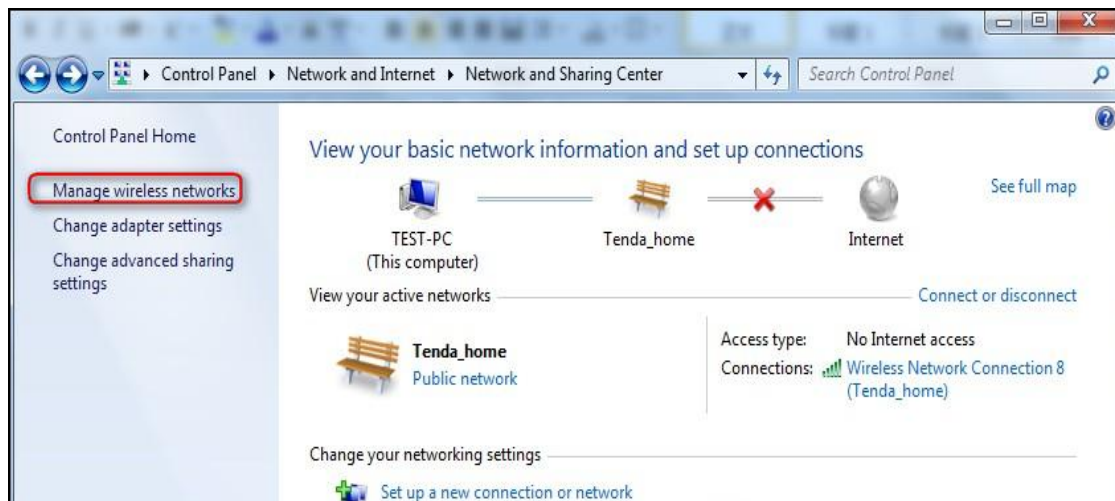
If you change wireless settings on your wireless device, you must remove them accordingly from your PC; otherwise, you may not be able to wirelessly connect to this device. Below describes how to do remove a wireless network from your PC.

Windows 7

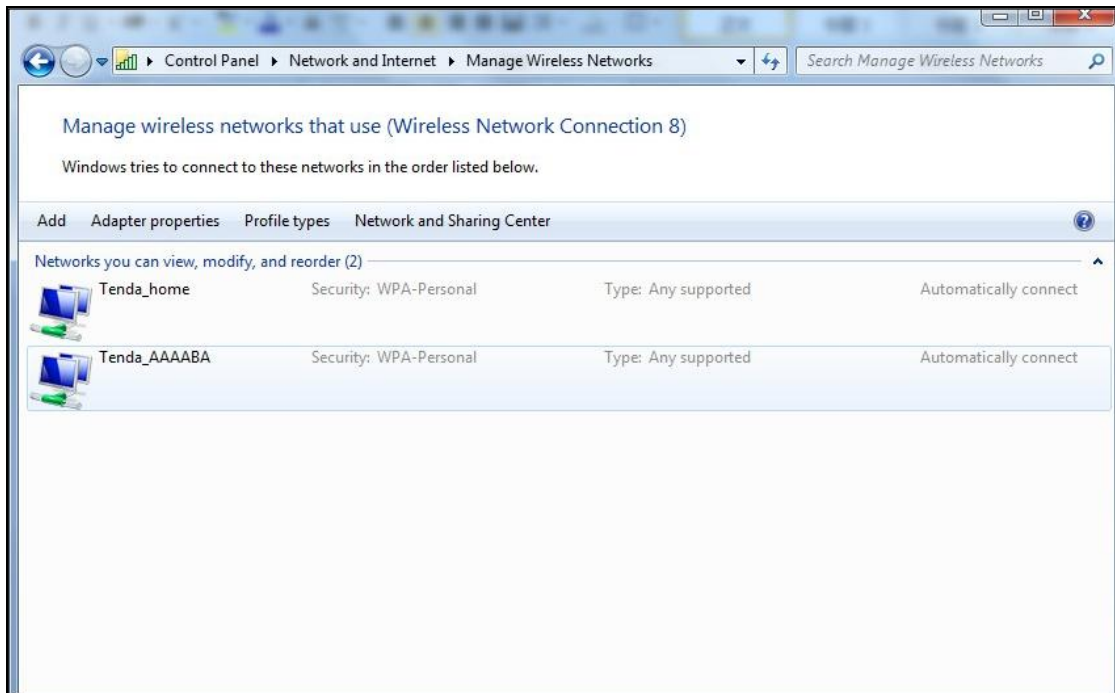
- ① Right-click the **Network** icon and select **Properties**.



- ② Select **Manage Wireless Networks**.

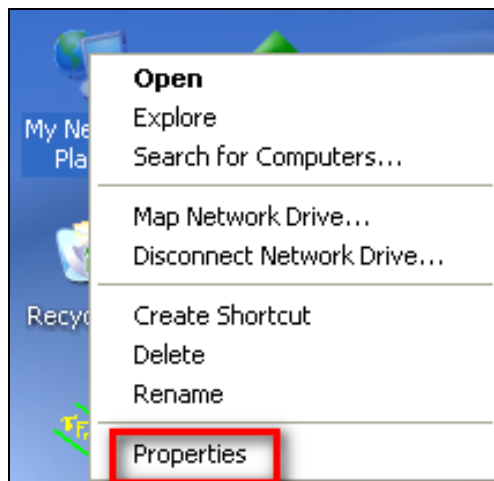


- ③ Select the wireless network and click **Remove network**.

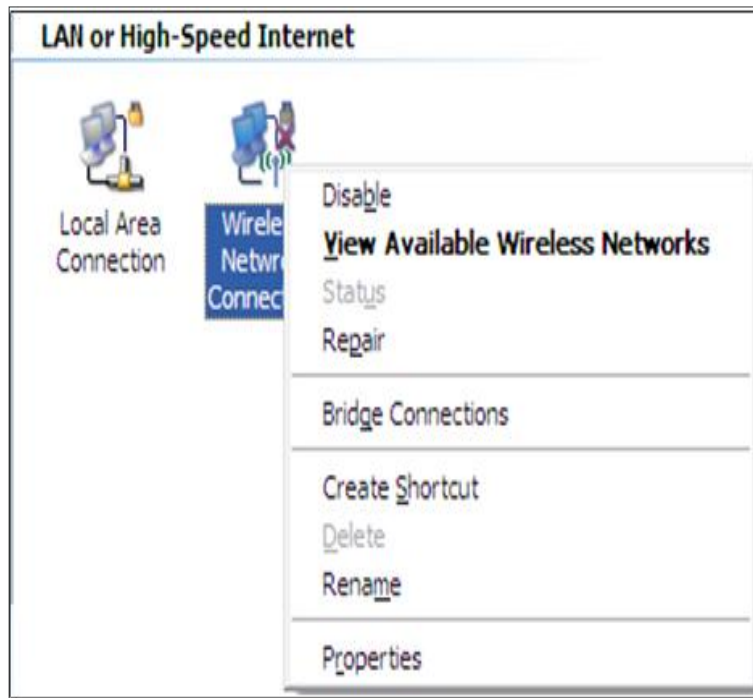


Windows XP

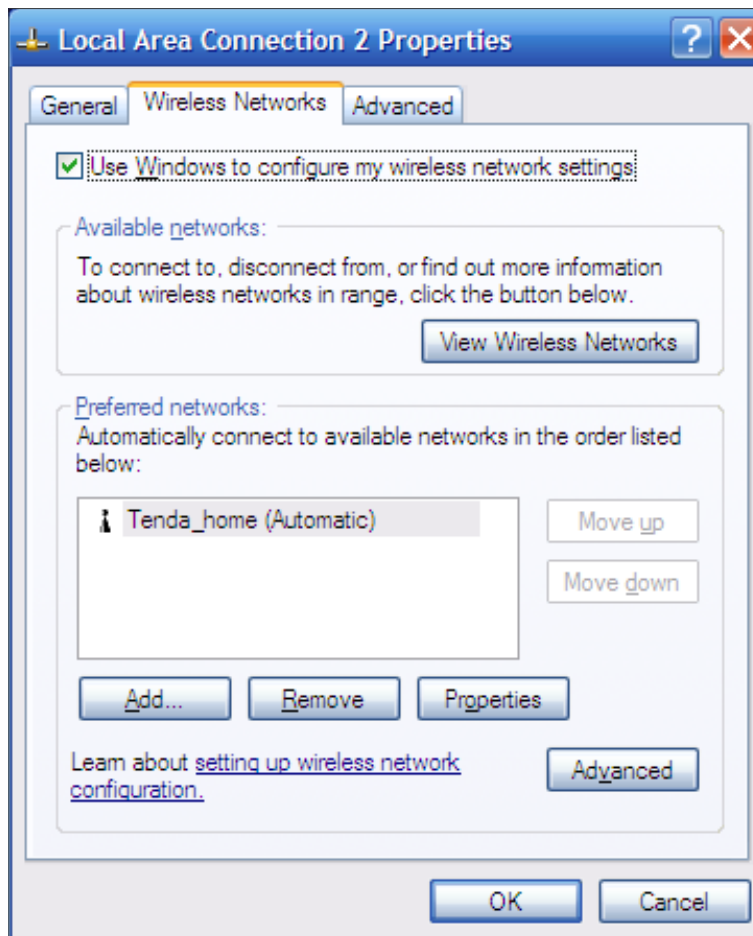
- ① Right-click **My Network Places** and select **Properties**.



- ② Right click **Wireless Network Connection** and then select **Properties**.



- ③ Click **Wireless Networks**, select the wireless network name under **Preferred networks** and then click the **Remove** button.



Appendix 6 Safety and Emission Statement



CE Mark Warning

This is a Class B product in a domestic environment, this product may cause radio interference, in which case the user may be required to take adequate measures

NOTE:(1)The manufacturer is not responsible for any radio or TV interference caused by unauthorized modifications to this equipment.(2) To avoid unnecessary radiation interference, it is recommended to use a shielded RJ45 cable



FCC Statement

This device complies with Part 15 of the FCC Rules. Operation is subject to the following two conditions: (1) This device may not cause harmful interference, and (2) this device must accept any interference received, including interference that may cause undesired operation.

This equipment has been tested and found to comply with the limits for a Class B digital device, pursuant to Part 15 of the FCC Rules. These limits are designed to provide reasonable protection against harmful interference in a residential installation. This equipment generates, uses and can radiate radio frequency energy and, if not installed and used in accordance with the instructions, may cause harmful interference to radio communications. However, there is no guarantee that interference will not occur in a particular installation. If this equipment does cause harmful interference to radio or television reception, which can be determined by turning the equipment off and on, the user is encouraged to try to correct the interference by one of the following measures:

- Reorient or relocate the receiving antenna.

- Increase the separation between the equipment and receiver.
- Connect the equipment into an outlet on a circuit different from that to which the receiver is connected.
- Consult the dealer or an experienced radio/TV technician for help.

FCC Caution: Any changes or modifications not expressly approved by the party responsible for compliance could void the user's authority to operate this equipment.

This transmitter must not be co-located or operating in conjunction with any other antenna or transmitter.

Radiation Exposure Statement

This equipment complies with FCC radiation exposure limits set forth for an uncontrolled environment. This equipment should be installed and operated with minimum distance 20cm between the radiator & your body.

NOTE: (1) The manufacturer is not responsible for any radio or TV interference caused by unauthorized modifications to this equipment. (2) To avoid unnecessary radiation interference, it is recommended to use a shielded RJ45 cable

NCC Notice

經型式認證合格之低功率射頻電機，非經許可，公司、商號或使用者均不得擅自變更頻率、加大功率或變更設計之特性及功能。

低功率射頻電機之作用不得影響飛航安全及干擾合法通信；經發現有干擾現象時，應立即停用，並改善至無干擾時方得繼續使用。前項合法通信，指依電信規定作業之無線電信。

低功率射頻電機須忍受合法通信或工業、科學及醫療用電波輻射性電機設備之干擾。

5.25 ~ 5.35GHz 限室內使用 (802.11a used)