

Tenda

Quick Installation Guide

Security Pan/Tilt Camera
CP7/RP7/CP3 Pro/RP3 Pro

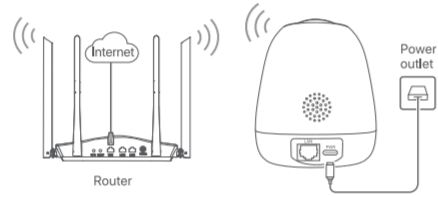
CP7 is used for illustrations here unless otherwise specified. The actual product prevails.

Add the Camera to TDSEE App



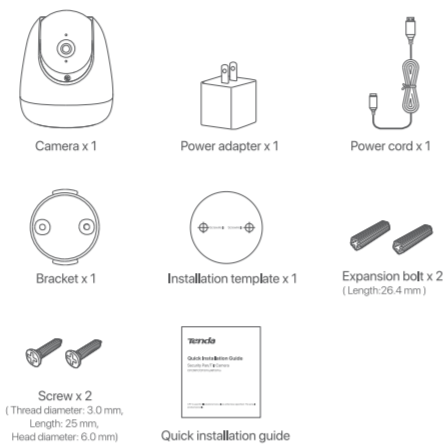
Before adding your camera, ensure that the router is connected to the internet successfully and the filter function is disabled.

- 1. Power on the camera. The indicator lights solid red after the camera is powered on. When the indicator blinks blue quickly, the camera is waiting to connect to a 2.4 GHz Wi-Fi network.
2. Download the TDSEE App onto your mobile device by scanning the QR code or searching for TDSEE in the App Store or Google Play.



Example: CP7

Package Contents



Appearance

* The appearance (such as Ethernet port) of different camera models may be different. The actual product prevails.

Example: CP7

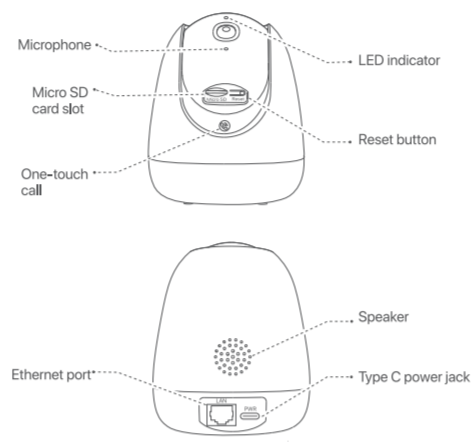


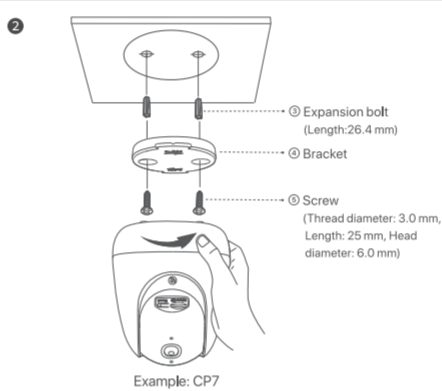
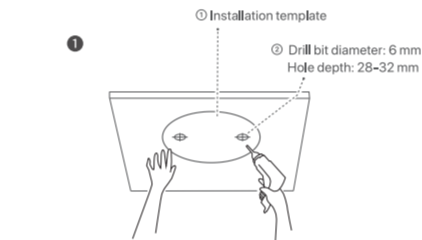
Table with 2 columns: Indicator, Micro SD card slot, Reset button, One-touch call button, Ethernet port, Type C power jack. Each row contains a description of the indicator or port's function.

Install the Device

The camera supports desktop, ceiling and wall mounting. This guide takes ceiling mounting as an example.

- Tip: (1) Ensure that the ceiling is strong enough to withstand three times the weight of the camera and bracket. (2) You may need a hammer, drill, a drill bit, a screwdriver, and a ladder for the installation.

- 1. Place the installation template at the desired location, and drill two holes. Drill bit diameter: 6 mm. Hole depth: 28-32 mm.
2. Insert two expansion bolts into the holes and use the screws to affix the camera's bracket over the expansion bolts. Attach the camera on the bracket and rotate to secure the camera.



Example: CP7

After finishing the ceiling mounting, you need to adjust the camera installation status to facilitate monitoring. Method: Run the TDSEE App. Choose the camera on the homepage, tap Settings (>) in the upper right corner) > Video Flip-over, and choose Camera UP-side Down.

FAQ

- Q1. What should I do if I failed to add the camera?
A1. Try the following solutions:
- Ensure that the router is connected to the internet.
- The camera only supports 2.4 GHz Wi-Fi. When adding the camera, you need to connect the smartphone to a 2.4 GHz Wi-Fi.
- Do not hide the Wi-Fi network of the router when adding the camera. (After adding the camera successfully, you can hide the Wi-Fi network).
- Confirm whether the indicator of the camera blinks blue quickly. If not, reset the camera by referring to Appearance and configure it again.
Q2. What should I do when the video preview is not smooth?
A2. Try the following solutions:
- Ensure that the Wi-Fi network of the router is smooth.
- Take the router closer to the camera.
- When previewing the video with cellular mobile data, ensure that the internet connection of the smartphone is smooth.
- Auto, Fluent, and HD are supported for video preview. Auto is used by default. You can adjust the video clarity according to the internet status.
Q3. How to view the videos stored in the Micro SD card of the camera on the computer?
A3. If you remove the Micro SD card installed in the camera and view the videos from your computer, it is recommended to use VLC media player or PotPlayer to play the videos.

- Q4. How to store the video?
A4. Method 1: Install the Micro SD card to the camera. By default, the camera's recording mode is Alarm Recording, which can be changed to All-day Recording through TDSEE App.
Method 2: Subscribe to the Cloud Storage Service on TDSEE App. Procedure: Run the TDSEE App, choose the camera on the homepage, and then tap Cloud Storage in the lower left corner. You can enjoy free cloud storage service (7-day loop detection recording) for 3 months upon the first activation.
Method 3: Connect the camera to the NVR. The camera supports the ONVIF protocol and can be added to the NVR either wired or wireless method for recording storage. The default user name and password of the camera are admin and admin123456 respectively. The specific configuration method of the NVR is subject to the manufacturer's instructions.

Get Support and Services

For technical specifications, user guides, GNU General Public License Notice and more information, please visit the product page or service page on www.tendacn.com. Multiple languages are available. You can see the product name and model on the product label.



https://www.tendacn.com/service/default.html



CE Mark Warning
This is a Class B product. In a domestic environment, this product may cause radio interference, in which case the user may be required to take adequate measures. This equipment should be installed and operated with minimum distance 20cm between the device and your body.
NOTE: (1) The manufacturer is not responsible for any radio or TV interference caused by unauthorized modifications to this equipment. (2) To avoid unnecessary radiation interference, it is recommended to use a shielded RJ45 cable.

Declaration of Conformity
Hereby, SHENZHEN TENDA TECHNOLOGY CO., LTD. declares that the device (Camera) is in compliance with Directive 2014/53/EU. The full text of the EU Declaration of Conformity is available at the following internet address: https://www.tendacn.com/download/151-9.html

Table with 2 columns: Operating Frequency/Max Output Power, English: Operating Frequency/Max Output Power, Polish: Częstotliwość pracy / Maksymalna moc wyjściowa, German: Betriebsfrequenz/Max. Ausgangsleistung, 2412MHz-2472MHz/20dBm

Safety Precautions

Before operating, read the operation instructions and precautions to be taken, and follow them to prevent accidents. The warning and danger items in other documents do not cover all the safety precautions that must be followed. They are only supplementary information, and the installation and maintenance personnel need to understand the basic safety precautions to be taken.
- For desktop mounting, the device must be horizontally mounted for safe use.
- For wall/ceiling mounting, the device is suitable for mounting at heights > 2m.
- Do not use the device in a place where wireless devices are not allowed.
- Please use the included power adapter.
- The main plug is used as the disconnect device, and shall remain readily operable.
- The power socket shall be installed near the device and easily accessible.
- Device operating environment: Temperature: +0°C ~ +45°C (32°F ~ +113°F)
- Power adapter operating environment: Temperature: 0°C ~ +40°C (32°F ~ +104°F)
- Keep the device away from water, fire, high electric field, high magnetic field, and inflammable and explosive items.
- Unplug this device and disconnect all cables during lightning storms or when the device is unused for long periods.
- Do not use the power adapter if its plug or cord is damaged.
- If such phenomena as smoke, abnormal sound or smell appear when you use the device, immediately stop using it and disconnect its power supply, unplug all connected cables, and contact the after-sales service personnel.
- Disassembling or modifying the device or its accessories without authorization voids the warranty, and might cause safety hazards.
- Refer all servicing to qualified service personnel.
- Disconnect the power source during servicing.
- Keep this device out of reach of children to prevent children from using it as a toy and causing personal injury.
- The device's marking information can be found on its surface.
For the latest safety precautions, see Safety and Regulatory Information on www.tendacn.com.



FCC Statement
This equipment has been tested and found to comply with the limits for a Class B digital device, pursuant to Part 15 of the FCC Rules. These limits are designed to provide reasonable protection against harmful interference in a residential installation. This equipment generates, uses and can radiate radio frequency energy and, if not installed and used in accordance with the instructions, may cause harmful interference to radio communications. However, there is no guarantee that interference will not occur in a particular installation. If this equipment does cause harmful interference to radio or television reception, which can be determined by turning the equipment off and on, the user is encouraged to try to correct the interference by one or more of the following measures:
- Reorient or relocate the receiving antenna.
- Increase the separation between the equipment and receiver.
- Connect the equipment into an outlet on a circuit different from that to which the receiver is connected.
- Consult the dealer or an experienced radio/TV technician for help.
Operation is subject to the following two conditions: (1) this device may not cause harmful interference, and (2) this device must accept any interference received, including interference that may cause undesired operation.

Radiation Exposure Statement
This device complies with FCC radiation exposure limits set forth for an uncontrolled environment and it also complies with Part 15 of the FCC RF Rules. This equipment should be installed and operated with minimum distance 20cm between the device and your body.



Technical Support
Shenzhen Tenda Technology Co., Ltd.
Floor 6-8, Tower E3, No.1001, Zhongshanyuan Road, Nanshan District, Shenzhen, China, 518052
Website: www.tendacn.com
E-mail: tendasecurity@tenda.cn
support.us@tenda.cn (North America)
support.uk@tenda.cn (United Kingdom)

Copyright © 2024 Shenzhen Tenda Technology Co., Ltd. All rights reserved. Tenda is a registered trademark legally held by Shenzhen Tenda Technology Co., Ltd. Other brand and product names mentioned herein are trademarks or registered trademarks of their respective holders. Specifications are subject to change without notice. V1.1 Keep for future reference.

Caution
Any changes or modifications not expressly approved by the party responsible for compliance could void the user's authority to operate this equipment. This transmitter must not be co-located or operating in conjunction with any other antenna or transmitter. Operating frequency: 2412-2462MHz

NOTE: (1) The manufacturer is not responsible for any radio or TV interference caused by unauthorized modifications to this equipment. (2) To avoid unnecessary radiation interference, it is recommended to use a shielded RJ45 cable.

RECYCLING
This product bears the selective sorting symbol for Waste Electrical and Electronic Equipment (WEEE). This means that this product must be handled pursuant to European directive 2012/19/EU in order to be recycled or dismantled to minimize its impact on the environment. User has the choice to give his product to a competent recycling organization or to the retailer when he buys new electrical or electronic equipment.