

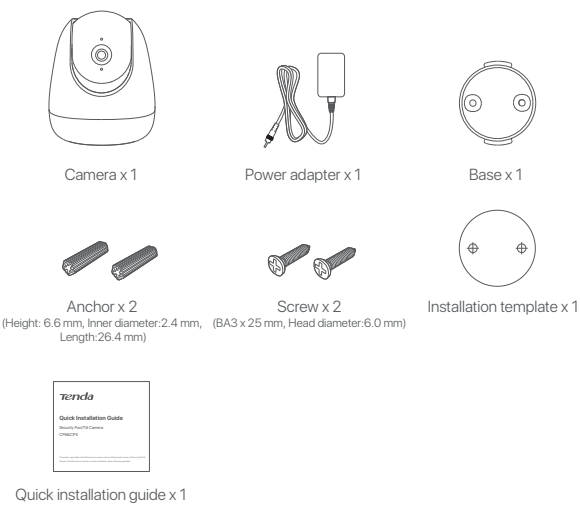
Tenda

Quick Installation Guide

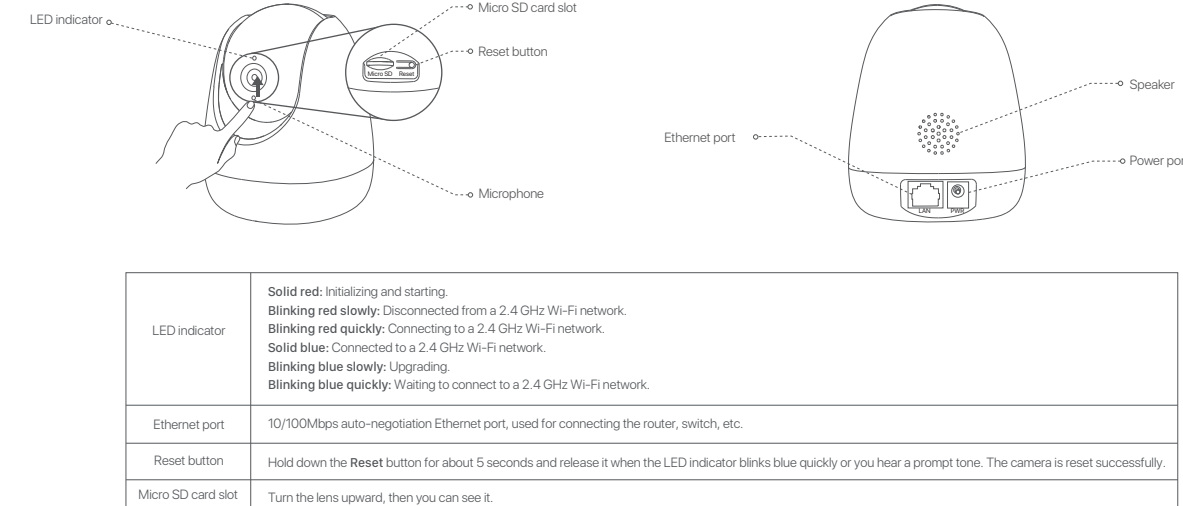
Security Pan/Tilt Camera
CP6&CP3

This guide is applicable to the Ethernet port version and non-Ethernet port version of Security Pan/Tilt Camera. The Ethernet port version is used for illustration unless otherwise specified.
For product or function details, please go to www.tendacn.com to download the user guide.

Package contents

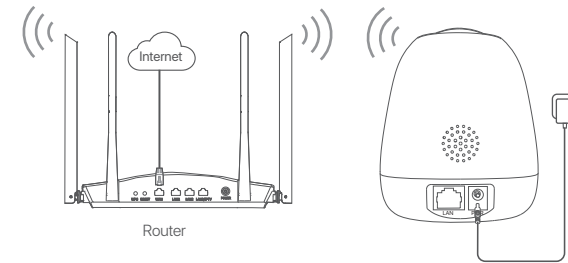


Appearance

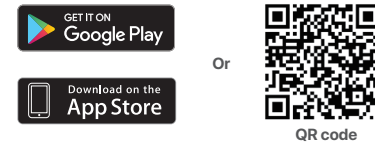


Add the camera to TDSEE App

- Tip:**
Before adding your camera, please ensure that the router is connected to the internet successfully and the filter function is disabled.
- ① **Power on the camera.**
The LED indicator lights solid red after the camera is powered on. When the LED indicator blinks blue quickly, it indicates the camera is waiting to connect to a 2.4 GHz Wi-Fi network.



- ② Download the **TDSEE** onto your mobile device by searching for **TDSEE** in the **App Store** or **Google Play** or by scanning the **QR** code.

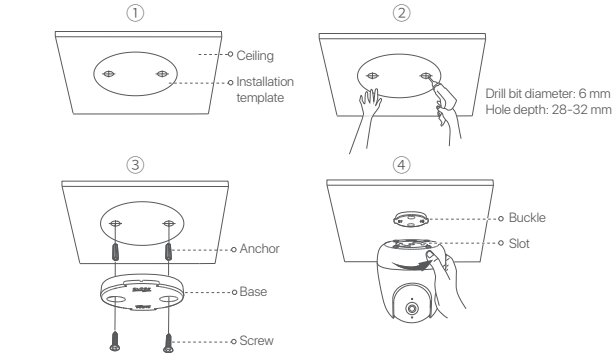


- ③ Run the **TDSEE** App and follow the instructions to complete user registration. Enter the Home page, tap the **Add a device** or the upper right corner of the home page.
- ④ Scan the **QR** code on the bottom of the camera, and follow the instructions in the App.

Install the device

The camera supports desktop, ceiling and wall installations. This guide takes ceiling installation as an example.

- Tip:**
Please make sure the ceiling is strong enough to withstand three times the weight of the camera and base.
You may need a hammer, drill bit, a screwdriver, and a ladder for the installation. Please prepare them by yourself.



After finishing the ceiling installation, in order to facilitate monitoring, you need to adjust the camera installation status.

Methods: Run the **TDSEE** App. Choose the camera on the home page, and tap **Settings** (in the upper right corner) > **Video Flip-over**, choose **Camera UP-side Down**.

FAQ

Q1. What should I do when I failed to add the camera?

A1. Try the following solutions:

- Ensure that the router is connected to the internet successfully.
- The **Security Pan/Tilt Camera** only supports 2.4 GHz Wi-Fi network. When adding the **Security Pan/Tilt Camera**, you need to connect the smartphone to a 2.4 GHz Wi-Fi network.
- Do not hide the Wi-Fi network of the router when adding the **Security Pan/Tilt Camera** (After adding the Wi-Fi network successfully, you can hide the Wi-Fi network).
- Confirm whether the LED indicator of the camera blinks blue quickly. If not, please reset the camera and configure it again.

Reset method: Hold down the **Reset** button for about 5 seconds and release it when the LED indicator blinks blue quickly or you hear a prompt tone. The **Security Pan/Tilt Camera** is reset successfully.

Q2. What should I do when the video preview is not smooth?

A2. Try the following solutions:

- Check if the Wi-Fi network of the router is smooth.
- Move the router closer to the camera.
- When previewing the video with cellular data, make sure that the internet connection of the smartphone is smooth.
- Auto, Fluant**, and **HD** are supported for video preview. By default, it is **Auto**. You can adjust the video clarity according to the internet status.

Q3. How to store the video?

A3. Try the following solutions:

- Method 1:** Install the Micro SD card to the camera. By default, the camera's recording mode is **Alarm Recording**, which can be set to **All-day Recording** through **TDSEE** App. **Method:** Run **TDSEE** App, choose the **Security Pan/Tilt Camera** on the home page, then tap **Settings** (in the upper right corner) > **Recording Settings**, choose **All-day Recording**.
- Method 2:** Subscribe Cloud Storage Service on **TDSEE** App. **Method:** Run **TDSEE** App, choose the camera on the home page, and then tap **Cloud Storage** in the lower left corner. You can enjoy free cloud storage service (7-days loop detection recording) for 3 months upon the first activation.



CE Mark Warning

This is a Class B product. In a domestic environment, this product may cause radio interference, in which case the user may be required to take adequate measures. This equipment should be installed and operated with minimum distance 20cm between the device and your body. The mains plug is used as disconnect device, the disconnected device shall remain readily operable.

NOTE: (1) The manufacturer is not responsible for any radio or TV interference caused by unauthorized modifications to this equipment. (2) To avoid unnecessary radiation interference, it is recommended to use a shielded RJ45 cable.

Declaration of Conformity

Hereby, SHENZHEN TENDA TECHNOLOGY CO., LTD. declares that the radio equipment type CP6 is in compliance with Directive 2014/53/EU.
Hereby, SHENZHEN TENDA TECHNOLOGY CO., LTD. declares that the radio equipment type CP3 is in compliance with Directive 2014/53/EU.
The full text of the EU declaration of conformity is available at the following internet address:
<http://www.tendacn.com/en/service/download-cate-101.html>



Caution:

Adapter Model: BN073-A09000E, BN073-A09000B
Manufacturer: SHENZHEN HEWESHUN NETWORK TECHNOLOGY CO., LTD.
Input: 100-240V AC, 50/60Hz, 0.3A
Output: 9V DC, 1A
--- DC Voltage



FCC Statement

This equipment has been tested and found to comply with the limits for a Class B digital device, pursuant to Part 15 of the FCC Rules. These limits are designed to provide reasonable protection against harmful interference in a residential installation. This equipment generates, uses and can radiate radio frequency energy and, if not installed and used in accordance with the instructions, may cause harmful interference to radio communications. However, there is no guarantee that interference will not occur in a particular installation. If this equipment does cause harmful interference to radio or television reception, which can be determined by turning the equipment off and on, the user is encouraged to try to correct the interference by one or more of the following measures:

- Reorient or relocate the receiving antenna.
 - Increase the separation between the equipment and receiver.
 - Connect the equipment into an outlet on a circuit different from that to which the receiver is connected.
 - Consult the dealer or an experienced radio/TV technician for help.
- Operation is subject to the following two conditions: (1) The device may not cause harmful interference, and (2) this device must accept any interference received, including interference that may cause undesired operation.

Radiation Exposure Statement

This device complies with FCC radiation exposure limits set forth for an uncontrolled environment and it also complies with Part 15 of the FCC RF Rules. This equipment should be installed and operated with minimum distance 20cm between the device and your body.

Caution:

Any changes or modifications not expressly approved by the party responsible for compliance could void the user's authority to operate this equipment.
This transmitter must not be co-located or operating in conjunction with any other antenna or transmitter.
Operating frequency: 2412-2462MHz

NOTE: (1) The manufacturer is not responsible for any radio or TV interference caused by unauthorized modifications to this equipment. (2) To avoid unnecessary radiation interference, it is recommended to use a shielded RJ45 cable.



RECYCLING

This product bears the selective sorting symbol for Waste electrical and electronic equipment (WEEE). This means that this product must be handled pursuant to European directive 2012/19/EU in order to be recycled or dismantled to minimize its impact on the environment.
Use has the choice to give the product to a competent recycling organization or to the retailer when he buys new electrical or electronic equipment.
Operating Temperature: -10°C ~ 40°C
Operating Humidity: (10% ~ 95%) RH, non-condensing



Technical Support

Shenzhen Tenda Technology Co., Ltd.
6-B Floor, Tower E3, NO.1001, Zhongphanyuan Road, Nanshan District, Shenzhen, China 518052
USA hotline: 1-800-870-6882
Toll Free: 7 x 24 hours
Canada hotline: 1-888-998-8966
Toll Free: Mon - Fri 9 am - 6 pm PST
Hong Kong hotline: 00853-81801988
Global hotline: +86 755-2765 7180 (China Time Zone)
Website: www.tendacn.com
E-mail: support@tenda.com.cn

Copyright

© 2020 Shenzhen Tenda Technology Co., Ltd. All rights reserved.
Tenda is a registered trademark legally held by Shenzhen Tenda Technology Co., Ltd. Other brand and product names mentioned herein are trademarks or registered trademarks of their respective holders. Specifications are subject to change without notice.