



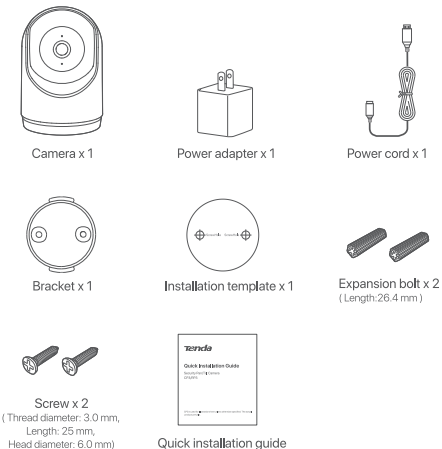
Quick Installation Guide

3MP Security Pan/Tilt Camera

CP3/RP3

CP3 is used for illustrations here unless otherwise specified. The actual product prevails.

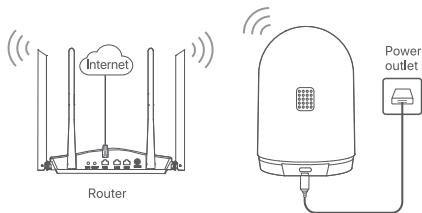
Package Contents



Add the Camera to TDSEE App

Tips:
Before adding your camera, ensure that the router is connected to the internet successfully and the filter function is disabled.

- Power on the camera.
The LED indicator lights solid red after the camera is powered on. When the LED indicator blinks blue quickly, the camera is waiting to connect to a 2.4 GHz Wi-Fi network.



- Download the TDSEE App onto your mobile device by scanning the QR code or searching for TDSEE in the Google Play or App Store.



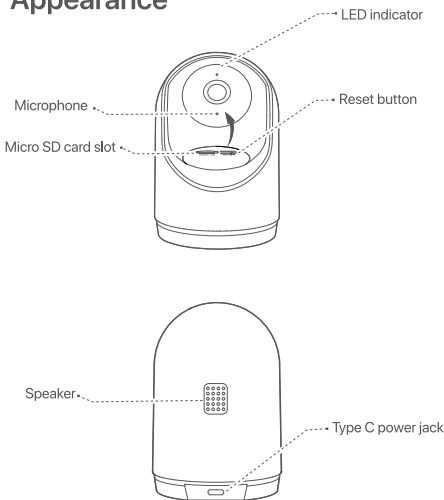
Or



- Run the TDSEE App and follow the instructions to complete user registration. Enter the homepage, and tap **Add a device** or **+** in the upper-right corner of the home page.
- Scan the QR code on the body of the camera, and follow the instructions in the App.

After the settings are completed, you can see that the added camera is online on the homepage of the TDSEE App, and the camera has been managed by the TDSEE App.

Appearance



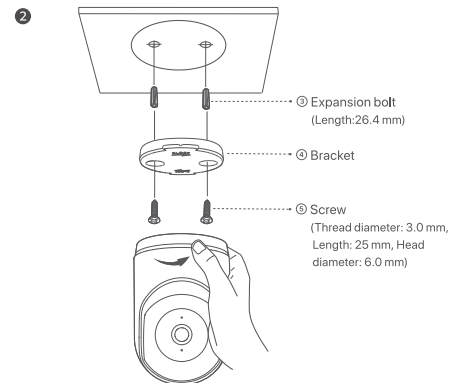
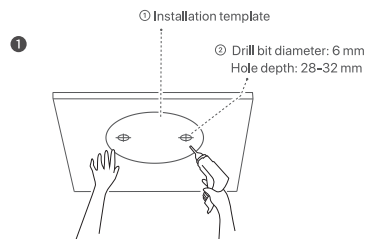
LED indicator	<p>Solid red: Initializing and starting.</p> <p>Blinking red slowly: Disconnected from the network.</p> <p>Blinking red quickly: Connecting to the network.</p> <p>Solid blue: Connected to the network.</p> <p>Blinking blue slowly: Upgrading.</p> <p>Blinking blue quickly: Waiting to connect to the network.</p>
Micro SD card slot (Behind the cover)	Insert the Micro SD card to store the monitoring videos.
Reset button (Behind the cover)	Hold down the reset button for about 5 seconds and release it after the LED indicator blinks blue quickly or you hear a prompt tone. The camera is reset to factory settings successfully.
Type C power jack	Used to connect to the included power adapter and power cord.

Install the Camera

The camera supports desktop, ceiling and wall mounting. This guide takes ceiling mounting as an example.

- Tips:**
- Make sure the ceiling is strong enough to withstand three times the weight of the camera.
 - You may need a hammer drill, a drill bit (Diameter: 6 mm), a screwdriver, and a ladder for the installation.

- Place the installation template at the desired location, and drill two holes (Drill bit diameter: 6 mm, Hole depth: 28-32 mm).
- Insert two expansion bolts into the holes and use the screws to affix the camera's bracket over the expansion bolts. Attach the camera on the bracket and rotate to secure the camera.



Power on the camera after the camera is mounted. When the camera completes startup, it will automatically connect to the configured Wi-Fi network. When the LED indicator of the camera is solid blue, you can use the camera normally.

FAQ

Q1. What should I do if I failed to add the camera to the TDSEE App?

A1. Try the following solutions:

- Ensure that the router is connected to the internet successfully.
- The camera only supports 2.4 GHz Wi-Fi network. When adding the camera, you need to connect the smartphone to a 2.4 GHz Wi-Fi network.
- Do not hide the Wi-Fi network of the router when adding the camera (After adding the camera successfully, you can hide the Wi-Fi network).
- Before adding the camera, ensure that the LED indicator of the camera blinks blue quickly. If not, refer to Q2 to reset the camera and try again.

Q2. How to reset the camera?

A2. Hold down the reset button for about 5 seconds and release it after the LED indicator blinks blue quickly or you hear a prompt tone. The camera is reset successfully.

Q3. What should I do when the video preview is not smooth?

A3. Try the following solutions:

- Ensure that the Wi-Fi network of the router is smooth.
- Take the router closer to the camera.
- When previewing the video with cellular mobile data, ensure that the internet connection of the smartphone is smooth.
- **Fluent** and **HD** are supported for video preview. You can adjust the video clarity according to the internet status.

Q4. How to view the videos stored in the Micro SD card of the camera on the computer?

A4. If you remove the Micro SD card installed in the camera and view the videos from your computer, it is recommended to use VLC media player or Potplayer to play the videos.

Q5. How to store the videos?

A5. Try the following methods:

Method 1: Install the Micro SD card on the camera. The recording mode of the Micro SD card includes **Alarm Recording** and **All Day Recording**. By default, the recording mode is **Alarm Recording**. You can modify the recording mode as required.

Method 2: Subscribe to the **Cloud Storage Service on TDSEE App**.
Procedure: Run the **TDSEE App**, choose the camera on the homepage, and then tap **Cloud Storage** in the lower left corner. You can enjoy free cloud storage service (7-day loop detection recording) for 3 months upon the first activation.

Method 3: Connect the camera to the NVR. The camera supports the ONVIF protocol and can be added to the NVR either wired or wireless method for recording storage. The default user name and password of the camera are **admin** and **admin123456** respectively. The specific configuration method of the NVR is subject to the manufacturer's instructions.

Get Support and Services

For technical specifications, user guides and more information, please visit the product page or service page on www.tendacn.com. Multiple languages are available. You can see the product name and model on the product label.



<https://www.tendacn.com/service/default.html>



FCC Statement

This equipment has been tested and found to comply with the limits for a Class B digital device, pursuant to Part 15 of the FCC Rules. These limits are designed to provide reasonable protection against harmful interference in a residential installation. This equipment generates, uses and can radiate radio frequency energy and, if not installed and used in accordance with the instructions, may cause harmful interference to radio communications. However, there is no guarantee that interference will not occur in a particular installation. If this equipment does cause harmful interference to radio or television reception, which can be determined by turning the equipment off and on, the user is encouraged to try to correct the interference by one or more of the following measures:

- Reorient or relocate the receiving antenna.
- Increase the separation between the equipment and receiver.
- Connect the equipment into an outlet on a circuit different from that to which the receiver is connected.
- Consult the dealer or an experienced radio/TV technician for help.

Operation is subject to the following two conditions: (1) this device may not cause harmful interference, and (2) this device must accept any interference received, including interference that may cause undesired operation.

Radiation Exposure Statement

This device complies with FCC radiation exposure limits set forth for an uncontrolled environment and it also complies with Part 15 of the FCC RF Rules.

This equipment should be installed and operated with minimum distance 20cm between the device and your body.

Caution:

Any changes or modifications not expressly approved by the party responsible for compliance could void the user's authority to operate this equipment.

This transmitter must not be co-located or operating in conjunction with any other antenna or transmitter.

Operating frequency: 2412-2462MHz

NOTE: (1) The manufacturer is not responsible for any radio or TV interference caused by unauthorized modifications to this equipment. (2) To avoid unnecessary radiation interference, it is recommended to use a shielded RJ45 cable.



RECYCLING

This product bears the selective sorting symbol for Waste electrical and electronic equipment (WEEE). This means that this product must be handled pursuant to European directive 2012/19/EU in order to be recycled or dismantled to minimize its impact on the environment.

User has the choice to give his product to a competent recycling organization or to the retailer when he buys a new electrical or electronic equipment.



CE Mark Warning

This is a Class B product. In a domestic environment, this product may cause radio interference, in which case the user may be required to take adequate measures.

This equipment should be installed and operated with a minimum distance 20cm between the device and your body.

NOTE: (1) The manufacturer is not responsible for any radio or TV interference caused by unauthorized modifications to this equipment. (2) To avoid unnecessary radiation interference, it is recommended to use a shielded RJ45 cable.

Declaration of Conformity

Hereby, SHENZHEN TENDA TECHNOLOGY CO., LTD. declares that the device is in compliance with Directive 2014/53/EU.

The full text of the EU declaration of conformity is available at the following internet address: <https://www.tendacn.com/download/list-9.html>

Operating Frequency/Max Output Power

English: Operating Frequency/Max Output Power

Deutsch: Betriebsfrequenz/Max. Ausgangsleistung

Italiano: Frequenza operativa/Potenza di uscita massima

Espanol: Frecuencia operativa/Potencia de salida máxima

Portugués: Frequência de Funcionamento/Potência Máxima de Saída

2412MHz-2472MHz/20dBm

Français: Fréquence de fonctionnement/Puissance de sortie maximale

Nederlands: Bedrijfsfrequentie/Maximaal uitgangsvermogen

Svenska: Driftsfrekvens/Max Uteffekt

Dansk: Driftsfrekvens/Maks. Udgangseffekt

Suomi: Toimintataajuus/maksimilähtöteho

Magyar: Működési frekvencia/Maximális kimeneti teljesítmény

Polski: Częstotliwość pracy / Maksymalna moc wyjściowa

Čeština: Provozní frekvence/maximální výstupní výkon

Ελληνικά: Συχνότητα λειτουργίας/Μέγιστη Ισχύς Εξόδου

Română: Frecvența de funcționare/Puterea maximă de ieșire

Български: Работна честота/максимална изходна мощност

Eesti: Tõsagedus/Max väljundvõimsus

Slovenščina: Delovna frekvenca/Največja izhodna moč

Slovenčina: Prevádzková frekvencia/maximálny výstupný výkon

Hrvatski: Radna frekvencija/Maksimalna izlazna snaga

Lietuvių: Operavimo dažnis/Maksimali išėjimo galia

Latviešu: Operējošās frekvences/Maksimālā jauda

Lietuvių: Darbinis dažnis/maksimali išėjimo galia

Türkçe: Çalışma Frekansı/Maks. Çıkış Gücü

Українська: Робоча частота/максимальна вихідна потужність

عربي: تردد الت تشغيل / الحد الأقصى لطاقة الإخراج

2412MHz-2472MHz/20dBm

Safety Precautions

Before operating, read the operation instructions and precautions to be taken, and follow them to prevent accidents. The warning and danger items in other documents do not cover all the safety precautions that must be followed. They are only supplementary information, and the installation and maintenance personnel need to understand the basic safety precautions to be taken.

- For wall mounting, the camera must be horizontally mounted for safe use.
- For ceiling or wall mounting, the camera is suitable for mounting at heights >2m.

- Do not use the device in a place where wireless devices are not allowed.

- Please use the included power adapter and power cord.

- The mains plug is used as the disconnect device, and shall remain readily operable.

- The power socket shall be installed near the device and easily accessible.

- Operating temperature: 0°C - +40°C.

- Keep the device away from fire, water, high electric field, high magnetic field, and inflammable and explosive items.

- Unplug this device and disconnect all cables during lightning storms or when the device is unused for long periods.

- Do not use the power adapter if its plug or cord is damaged.

- If such phenomena as smoke, abnormal sound or smell appear when you use the device, immediately stop using it and disconnect its power supply, unplug all connected cables, and contact the after-sales service personnel.

- Disassembly or modifying the device or its accessories without authorization voids the warranty, and might cause safety hazards.

For the latest safety precautions, see **Safety and Regulatory Information** on www.tendacn.com.



Technical Support

Shenzhen Tenda Technology Co., Ltd.
Floor 6-8, Tower E3, No.1001, Zhongshanyuan Road, Nanshan District, Shenzhen, China. 518052

Website: www.tendacn.com

E-mail: tendasecurity@tenda.cn

support.us@tenda.cn (North America)

support.uk@tenda.cn (United Kingdom)

Copyright © 2024 Shenzhen Tenda Technology Co., Ltd. All rights reserved.

Tenda is a registered trademark legally held by Shenzhen Tenda Technology Co., Ltd. Other brand and product names mentioned herein are trademarks or registered trademarks of their respective holders. Specifications are subject to change without notice.