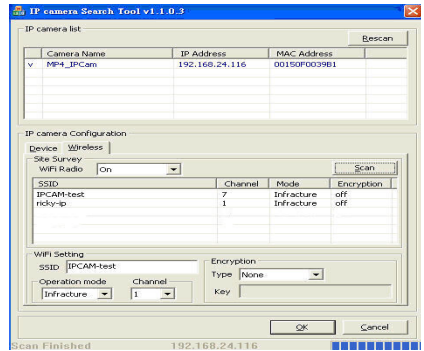
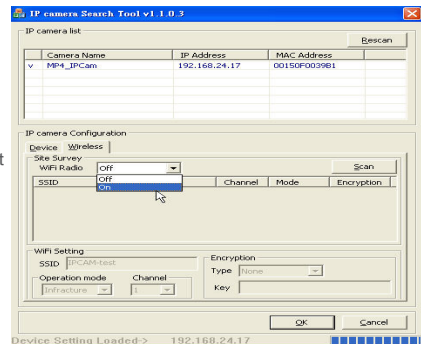


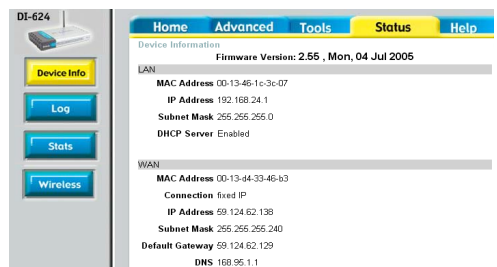
(C) Start Search Tool search application. Click Find IP Cam to search the IP-Cam address. Follows the steps below to execute:



1. First, start Search Tool and choose Wireless tab. Set WiFi Radio to ON and press OK. Then, IP-CAM will initialize wireless function. The system will switch into another IP Address for wireless.
2. Click Search Tool and choose for configuring wireless settings.
3. Press to search wireless AP and choose SSID that you want to connect



4. Fill in the name of AP inside the box (use the name specified by wireless router)
5. Choose as wireless operation mode.
6. Choose Type as Encryption Type (use the connection code specified by wireless router)
7. Fill in 1234567891 in the box of Key (use the connection password specified by wireless router)
8. After finish the configuration, please click (D) Restart PC and IP Sharing. If you want to connect IP-CAM through WAN, please open Status to see the WAN IP address (e.g. http://59.124.62.138). To connect IP-CAM, please type (http://59.124.62.138:81). (Refer to Figure 6)
9. After setting unplug and re-plug the power adaptor



(Figure 6)

(E) If IP-CAM and PC are in the same subnet of IP Sharing, please click under Search tool and wait for Search Tool finding IP Address (e.g., 92.168.24.145). Then, click MP4_IPCAM to connect.

GETTING STARTED

3.1 SYSTEM LOGIN

The system login is used to identify if the user is illegal or not and allows he/she to use the functions offered by the system. After logged in successfully, the user can start to operate for network monitoring and configuration. The procedures are listed as below:

Step 1.

Start login and refer to the following figure. There are two ways for starting:

- 1.Click MP4_IPCam on Search Tool to connect IE browser.
- 2.Type 192.168.25.17 on IE browser.

Step 2.

A logging dialog will appear as follows:



Step 3.

Type users name and password.

Step 4.

The default user name is "admin" and the default password is "password".

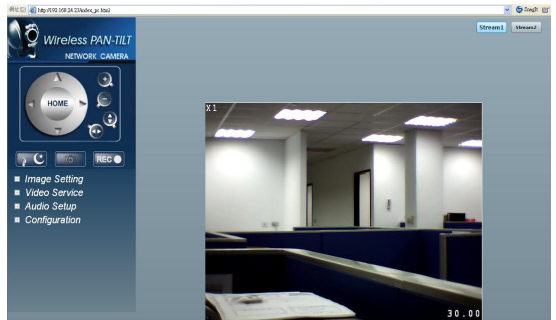
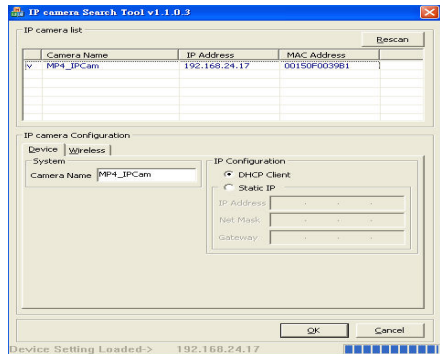
Step.5

Press OK. The network monitoring screen will be shown as follows.

Step.6

If the values typed are wrong, please press Cancel for retyping correct ones.

✘ Once login the browser, the IP-CAM will download and setup Adobe Flash Player 9.0 directly. If you cannot see the screen, please refer to 3.2 LiveView.



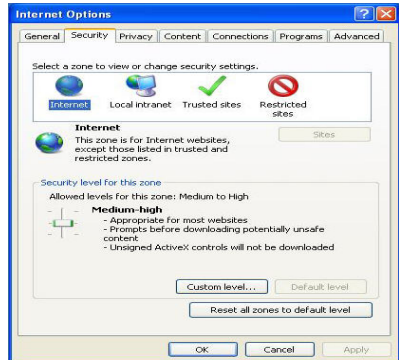
3.2 LIVEVIEW

When using IP CAM for the first time, users must change the IE security settings (please refer to settings step 3.2.1). Otherwise, the system will display the following warning, and be unable to display the surveillance feeds. (please refer to security settings step 3.2.1).

3.2.1 The IE security settings can be changed by following the steps below:

Step 1.

IE Toolbar ---> Tools ---> Internet Settings ---> Security ---> Custom Level (C)



Step 2.

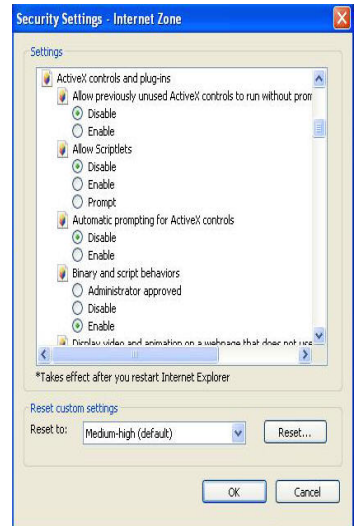
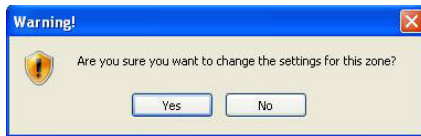
After clicking on Custom Level (C) , a security settings window shall appear.

Change ActiveX Control Options and Plug-ins settings to the following :

- 1.Download unsigned ActiveX controls : Enable
- 2.Download signed ActiveX controls : Enable
- 3.Initialize and script ActiveX controls not marked as safe : Enable
- 4.Run ActiveX controls and plug-ins : Enable
- 5.Script ActiveX controls marked safe for scripting : Enable

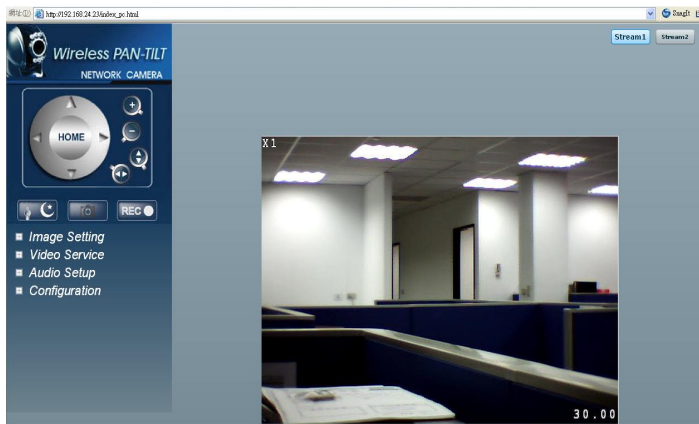
Step 3.

After pressing "ok", a warning window shall appear. Click on "Yes" , and you shall return to the last window. Press "OK", and the setup is complete.



Step 4.

When the installation is complete , you may begin viewing the surveillance image for the first time, as shown below :





3.3 Take a Shot

This function allows users to capture the screenshot as a photo, and save it on the computer.


Directions:

Step 1.

Press the  button. When you press an option on the real-time monitoring screen, the  button will blink once and quickly.

Step 2.












The captured photos will be stored in the path of My document/ ipcam/snapshot.

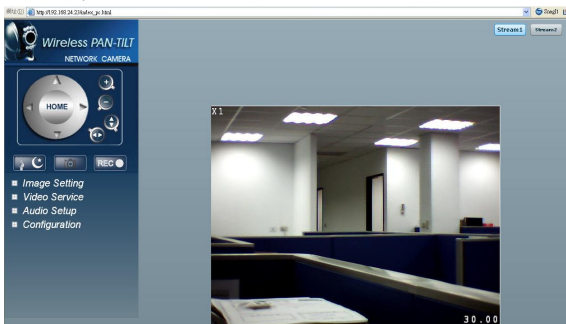
網址  <http://192.168.0.120/still.jpg>



ADVANCED FUNCTION WITH LIVEVIEW

4. ADVANCED FUNCTION WITH LIVEVIEW

- 4.1  ---Image direction control: Up/Down/Left/Right/Home
- 4.2  ---Image zoom IN/OUT: Image can be zoomed in for four times (the zooming ratio will be shown on the top-left corner of the screen)
- 4.3  ---Automatic up, down, left and right.
- 4.4  ---Switch for night infrared ray LED. After powering on, the button will be displayed with 
- 4.5  ---Manual snapshot. When a photo is captured, the button will blink once . The image file format is .jpg. (The The captured images will be stored in the path of My document/ipcam/ snapshot.
- 4.6  ---Manual record. After clicking the button, it will be displayed as . You can click the button again to cancel the recording. The recording file format is .avi. (Move the mouse cursor to REC and click it. The recording will be started. The recording length of time is 30 minutes. For the time over 30 minutes, the system will record the images with next phase and the files will be stored in the path of My document/ ipcam/record)
- 4.7   ---Switch for double mode. Please set it on vedio service page



4.8 Image Setting

Brightness: Adjust the brightness of network camera manually. The great the value is, the brighter the screen will be, and vice versa.

Saturation: Adjust the saturation of network camera manually. The great the value is, the more colorful the screen will be. On the contrary, lower value will make the screen to the same .

Contast: Adjstut the contrast of the network camera manually. The greater the value is, the more the contrast of the screen will be, and vice versa.

Hue: Adjust the hue of the color for the display.

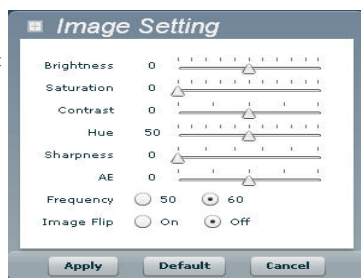
Sharpness: Adjust the sharpness of the screen. The lower the value is, the smoother and fainter the screen will be. The higher the value is, the sharper and clearer the screen will be.

AE:Detect the light source and adjust the exposure automatically.

Frequency: There are two types of image playing requencies, 50 Hz and 60 Hz which will be applied for the area that the device located. 60 Hz is suitable for using in USA; 50 Hz is suitable for using in Europe. (It is suggested to use 60 Hz for the users in Taiwan; 50 Hz for the users in China)

Image Flip: Make the image on the screen displaying with up or down (when IP-CAM hangs from the ceiling, such function can be used to change the direction of image displaying.)

Default : Set the image configuration with default value.



4.9 **Video Service**

a. Stream 1

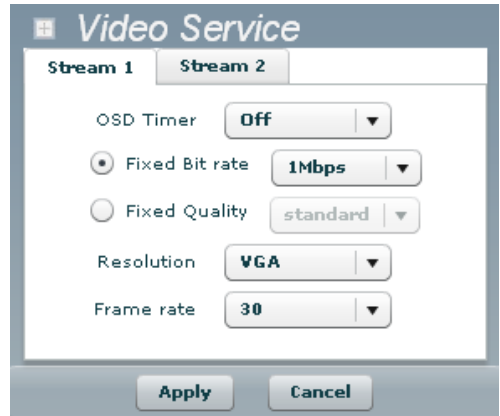
OSD Timer: Open/close the date and time display on the monitoring screen. ON: open; OFF: close.

Fixed Bit rate: Set the data transmission traffic. The available options include 512Kbps, 1Mbps, 1.5Mbps, and 2Mbps.

Fixed Quality: Set the image quality. The available options include standard, good and high.

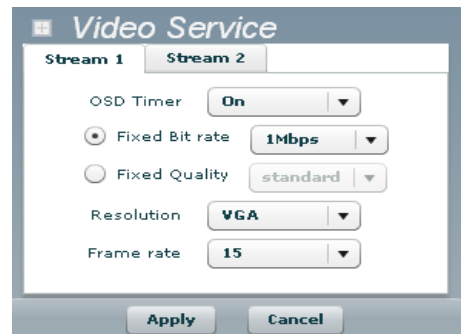
Resolution: Set the image resolution shown on the screen. The available options include VGA, QVGA and QQVGA.

Frame rate: Set the number of the images on the screen. The available options include 10, 15, 20, 25 and 30 (The Frame rate will be displayed on the bottom right corner on the monitoring screen).



b. Stream 2

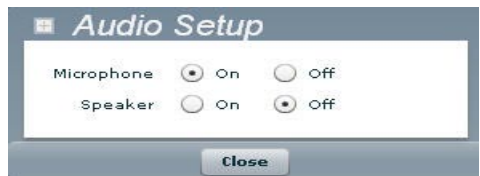
Encoder Type: It can set the second video frequency. The available options include MPEG4, Motion JPEG (refer to Stream1 for configuration) and Disable such function(when stream 2 is started, stream1 and stream2 Frame rate will be forced with 15 automatically.)


4.10: **Audio Setup**

Microphone: Open the radio reception function ON: open OFF: close

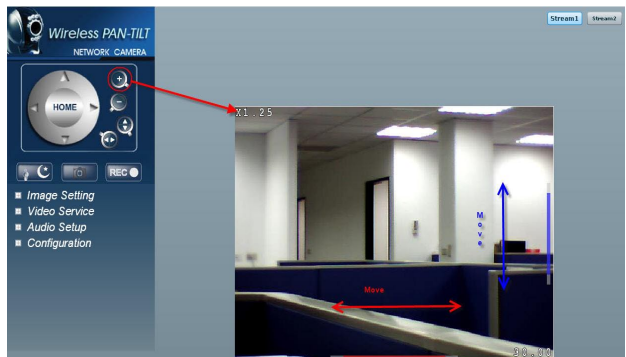
Voice Alarm: Open the speaker output function. ON: open ; OFF: close.

✕To user speaker click it to status on,while the speaker is not used , the mode will return to off status.



4.11 —Zoom in or out the image. There are four sections for zooming in image (the zooming ratio will be shown on the top left corner of the monitoring screen.)

Press “+” to zoom in the image. Move your mouse to the screen and wait the mouse cursor changing into direction sign for moving the screen.



CONFIGURATION

Advanced settings of the machine are described in this section (click [here](#) to access to setup page), including:

⌘ Image Control

- Home (return Live View)
- Image Control
- Audio Control
- Motion Detection

⌘ Basic Setup

- Network Setup
- Wireless LAN Setup

⌘ Advance Setup

- FTP
- E-Mail
- NTP
- Account
- Upgrade
- Reboot/Restore

5.1 IMAGE CONTROL

Video Settings

Stream1 Settings

OSD timer OFF ▾

Fixed BitRate 1Mbps ▾

Fixed Quality Standard ▾

Framerate 30fps ▾

Resolution VGA(640x480) ▾

Video Settings2

Dual Bitstream Disable ▾

[Save](#)

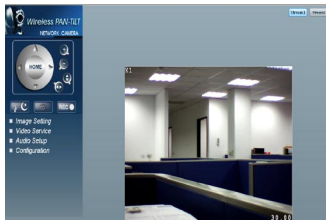
Below shows the description for the settings in this web page:

Video Settings.

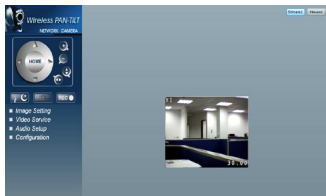
- 1.OSD timer : Open/close the date and time display on the monitoring screen. ON: open; OFF: close.
- 2.Fixed BitRate : There are four modes offered for you to choose for the network transmission traffic. It is suggest to choose the one which suits for your network highest speed to have the best effect.
- 3.Fixed Quality : It will make the moving images running smoothly. In general, when you choose fast rate (about 30 frames/second) for fixed quality, part of the image quality might be damaged. If you choose the lower rate (about 15 frames/second) for fixed quality, the image on the screen will be enhanced.
- 4.Frame rate : Fix the number of the images within one second shown on the screen. The number of the images displayed on the screen will be kept without considering any condition.
- 5.Resolution : Choose the image resolution for the network camera. With higher resolution, large scale of image will be seen. However, it needs greater network bandwidth. With lower resulation, small area of the image will be seen and the required network bandwidth can be small.

⌘ BELOW SHOWS THE COMPARISON FOR THE DIMENSION OF VGA, QVGA AND QQVGA.

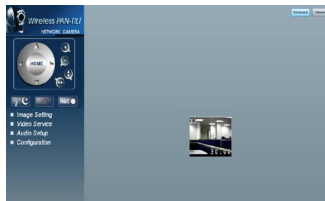
VGA:



QVGA:



QQVGA:



Vidio Settings 2

Dual Bitstream : It can set the second video frequency. The available options include MPEG4, Motion JPEG (refer to Stream1 for configuration) and Disable such function (when stream 2 is started, stream1 and stream2 Frame rate will be forced with 15 automatically.)



5.2 Audio Control

Below shows the description for the settings in this web page:

Audio Settings

- 1.Audio Channels : Set the sound mode for output. Mono is single sound; Stereo is stereophonic sound.
- 2.Sample Rate : Set the voice sampling rate of file.

Streaming Settings

- 1.RTSP Port : Set the multi-media stream protocol for the image. It allows to set multiple streams control at the same time.
 - 2.Control Port : Set the image control channel.
 - 3.HTTP Port : Set default channel for the network protocol.
- ※If you want to connect IP-CAM through WAN port to view IP-CAM images, the above three settings must be configured in the virtual server list in IP Switch.

Audio & Multicast Settings

Audio Settings

Audio Channels Mono Stereo
 Sample Rate 16000

Streaming Settings

RTSP Port 554
 Control Port 21
 HTTP Port 80

5.3 Motion Detection



Right Click to setup MD area(s)

Detection Frame Interval 15
 Alarm Setting
 Alarm Type No Action

Wireless/Wired MPEG-4 Pan & Tilt Surveillance Camera

Below shows the description for the settings in this web page:

1. Toggled Area Configuration :

Step1:

Left click the mouse button on the screen to get the controls (Figure 1)

Click to activate and use this control

(Figure 1) Click to enable and use such control (Figure 1)

Step2:

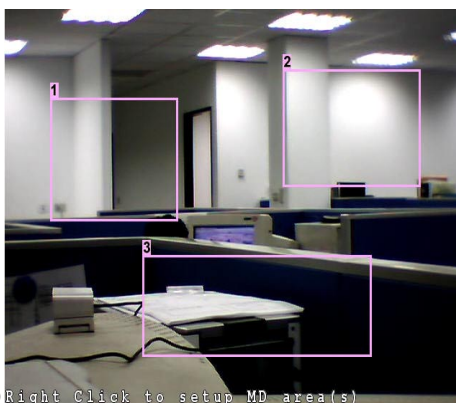
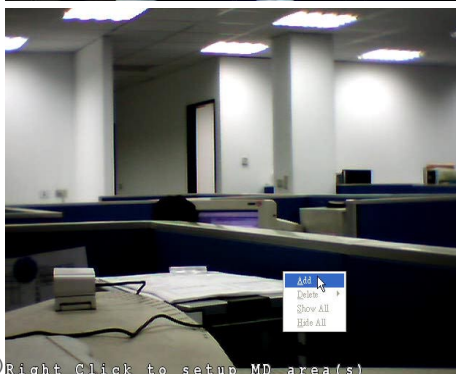
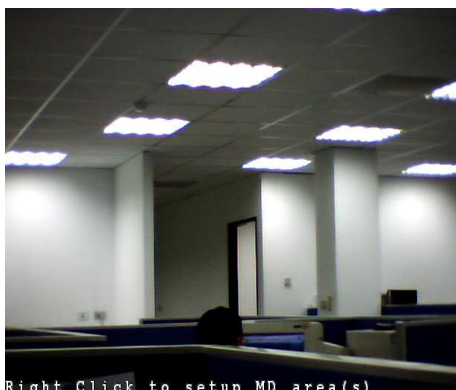
Right click the mouse button to choose Add for setting the toggled area (Figure 2)

(Figure 2)

Step3:

Press and hold the left mouse button. Drag the mouse cursor to set the toggled area (Figure 3). You can set up to three groups. After finishing the settings, click Save.

(Figure 3)



2.Detection Frame Interval : Set the sensitivity of toggled area. The lower the value is, the more the sensitivity will be. If there is any change happened in the area, the warning will be toggled.

3.Alam Type : Set Take Snapshot or No action.(SD card will be detected and used automatically)

4.Action : Upload photos by mail or FTP (it is necessary to set mail address, FTP website beforehand). Mail and FTP are alternative. They cannot be selected at one time. There is no selection for storing SD Card. Simply insert SD Card for storage.

5.4 Network Setup

Below shows the description for the settings in this web page:

- 1.DHCP Client : If your IP address for the network is assigned by DHCP server, you have to select this option.
- 2.Static IP : Specify IP address for the IP-CAM manually. Please do not set the same IP address with other device.

✕Choose Static IP for switching into detailed settings page.

IP Address :

Type the static IP address provided by ISP (or an IP address in known subnet)

Subnet Mask :

The default subnet mask is 255.255.255.0

Gateway :

In general, the ISP will offer a default address for gateway of the device. You must ask your SIP for that setting.

DNS1 :

In general, the ISP will offer one DNS IP address at least. Multiple DNS IP addresses also are common. You must type one DNS address at least.

DNS2 : Mean the secondary DNS IP address.

- 3.PPPoE : Choose dialing connection with DDNS settings.

✕Choose PPPoE for switching into detailed settings page.

Network Settings

LAN settings

Save

DHCP Client
 DHCP Client
 Static IP
 PPPoE

LAN settings

Static IP

IP Address

192.168.0.1

Subnet Mask

255.255.255.0

Gateway

192.168.0.1

DNS1

168.95.1.1

DNS2

168.95.192.1

Save

LAN settings

PPPoE

User Name

user

Password

●●●●●●●●

Password Retype

●●●●●●●●

DDNS Enable Enable Disable

Server Address

DynDNS.org

Host Name

mantaray.dyndns.org

User Name

mantaray

Password

●●●●●●●●

Below shows the description for the settings in this web page:

- 1.User Name : Login PPPoE network automatically. Type the username for PPPoE.
 - 2.Password : Login PPPoE network automatically. Type the password for PPPoE.
 - 3.Password Retype : Type the password again for verifying the password is correct or not.
 - 4.DDNS Enable : Enable DDNS or Disable DDNS.
 - 5.Server Address : Choose DDNS website you want to use.
 - 6.Host Name : Type the name of the dynamic server that you have registered.
 - 7.User Name : Type the username of the dynamic server that you have registered.
 - 8.Password : Type the password of the dynamic server that you have registered.
- ✕For the detailed information for DDNS, please refer to Appendix B.

5.5 Wireless LAN Setup

Below shows the description for the settings in this web page:

1. Wireless Radio : Activate the wireless function. Enable: activate/Disable: inactivate.
 2. Mode : Switch the wireless network mode for IP-CAM, such as Hoc (something like point-to-point mode) or Infrastructure (broadcast).
 3. SSID : Login the SSID of your IP-CAM. Your IP-Cam will be easily identified on wireless network.
 4. Security : Choose the security encryption mode for your wireless network. There are several selections:
 - 1: Open System (no encryption)
 - 2: WEP64(ASCII) Type five letters as codes for WEP.
 - 3 : WEP64(HEX) Type ten digits as codes for WEP.
 - 4: WEP128(ASCII) Type 13 letters as codes for WEP.
 - 5: WEP128(HEX) Type 26 digits as codes for WEP.
 - 6: WPA-PSK(ACE) Type eight to 63 letters as codes for WPA/AES.
 - 7: WPA-PSK(TKIP) Type eight to 63 letters as codes for WPA/TKIP.
- ※ After setting and power off uplug and re-plug the Ethernet cable
- ※ It takes 10-20 minutes to search IP cam addres with search tool .

Wireless Network Settings

Wireless Radio	<input checked="" type="radio"/> Enable <input type="radio"/> Disable
Mode	Infrastructure ▼
SSID	ricky-ip
Security	Open System ▼

5.6 FTP - FTP Server Settings

Below shows the description for the settings in this web page:

1. FTP Server : Type the network address of FTP for uploading (no need to type sub-directory address).
2. FTP Port : 21 is the specified port for network FTP (no need to change it).
3. Username : Type the username for login in FTP Server.
4. Password : Type the password for login in FTP Server.
5. Remote Folder : Type the path of FTP Server.
6. Passive Mode : Set the logging mode.

FTP Settings

FTP Server	ftp.mycom.com.tw
FTP Port	21
Username	user
Password	●●●●●●●●
Remote Folder	/pub
Passive Mode	ON ▼

5.7 E-MAIL

Below shows the description for the settings in this web page:

1. SMTP Server : Type the URL/IP address of mail server for sending mailes.
2. Recipient : Type the e-mail address for sending mailes.
3. Username : Type the username for logging into the e-mail box to pass the verification of mail sending.
4. Password : Type the password for logging into the e-mail box to pass the verification of mail sending.
5. Authentication Method : Choose the mode for authetication.

SMTP Settings

SMTP Server	smtp.mycom.com.tw
Recipient	mail@mycom.com.tw
Username	mail@mycom.com.tw
Password	●●●●●●●●
Authentication Method	PLAIN ▼