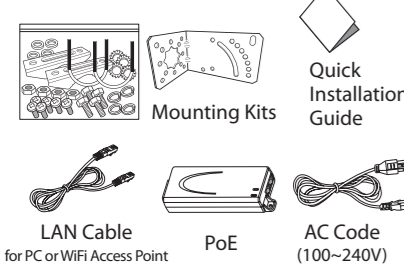


## Quick Installation Guide

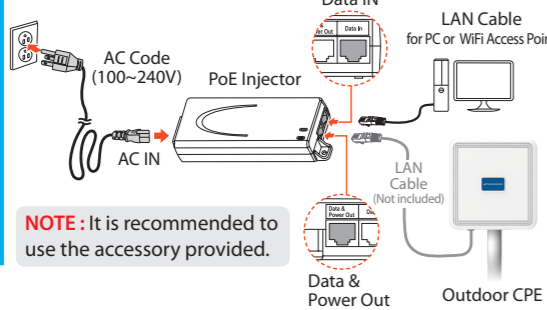
### LTE Network Outdoor CPE

SLC-120T420GA

#### Package Contents



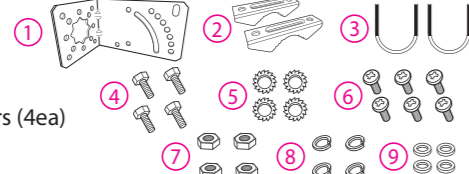
#### Connection Diagram



#### Mounting Configuration

You need the following :

- ① One Bracket
- ② Mounting Bar (2ea)
- ③ Mounting U-Bolt (2ea)
- ④ Bolts (4ea)
- ⑤ Toothed lock washer (4ea)
- ⑥ Bolt M3 (6ea)
- ⑦ Nuts (4ea)
- ⑧ Spring Washers (4ea)
- ⑨ Washer (4ea)



**WARNING:** The guarantee of product quality and warranty service is not available by removal of this label purposely.

#### Assembly sequence optimization

##### Step 1

Remove the four Bolt M3 from the outdoor CPE.

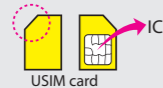
\* Remaining 4 screws are enclosed in the mounting kits as ⑥ (4ea)



##### Step 2 (Installing USIM Card)

Carefully insert the USIM Card into USIM slot.

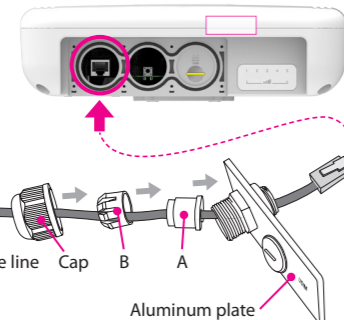
**CAUTION:** The surface of IC(metal) should be facing downward from the USIM card.



##### Step 3

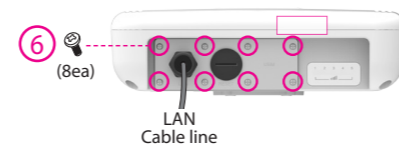
Remove the cap by turning. Then follow the next steps as shown below.

- ① Remove the cap.
- ② Put A, B, Cap and Aluminum plate to cable line in order.
- ③ Plug the cable line into the LAN hole of outdoor CPE.
- ④ Connect A and B in order.
- ⑤ Lastly, connect Cap to Aluminum plate by turning.



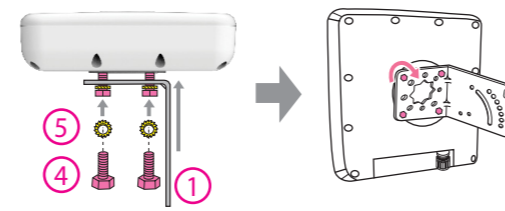
##### Step 4

Assemble the Aluminum plate and outdoor CPE using the screws Bolt M3(8ea).



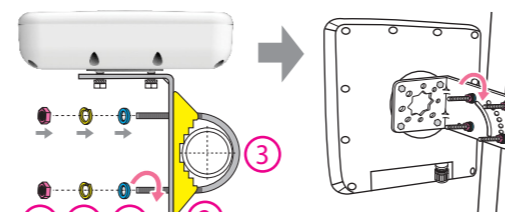
##### Step 5

Attach item 1 to the back side of the device using item 4 as shown. (Insert item 5 into item 4 before installing)



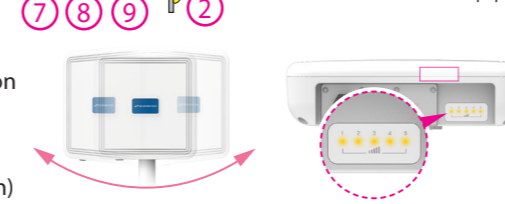
##### Step 6

Install the device to pole using item 2 & 3, tighten the bracket by using item 7 & 8 & 9.



##### Step 7

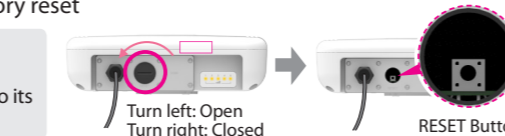
Adjust the device, using the different position on the bracket. Check the LED light (1~5).



##### RESET Button (When the device turned On)

- Press the reset button once : Device reboot
- Press and hold the reset button 5sec : Factory reset

**NOTE:** If you forget the Login password for the Outdoor CPE or IP address after making changes, use the reset button to restore the Outdoor CPE to its original factory default settings.



#### LED Presentation

Status icon & LED indicator	
Boot in progress	One Yellow LED Blinking, Blinking period = 1sec
S/W Update	Five Yellow LED Blinking, Blinking period = 1sec
Network connection	Number of LED depending on signal strength
	- Strongest Signal : Five yellow LED
	- Strong Signal : Four yellow LED
	- Medium Signal : Three yellow LED
	- Weak Signal : Two yellow LED
	- Weakest Signal : One yellow LED

#### Log-in to Web Interface

- Go to WEB "<http://192.168.1.1>" then press ENTER to access the login screen.
- The default one is **user** for both User Name and Password.

#### IMPORTANT SAFETY AND INSTALLATION WARNINGS

##### WARNING:

DO NOT ATTEMPT TO SERVICE THIS PRODUCT YOURSELF AS OPENING OR REMOVING COVERS MAY EXPOSE YOU TO DANGEROUS VOLTAGES OR OTHER HAZARDS. REFER ALL SERVICING TO QUALIFIED SERVICE PERSONNEL.

##### MOUNTING:

Mount this device only as described in the installation instructions, otherwise it may fall causing serious personal injury and/or damage the device. Use only with the brackets supplied with the device. Do not use attachments not recommended for this device as they may cause hazards.

##### SERVICING:

Remove power from this device and refer servicing to qualified personnel under the following conditions:

1. If the inside of the device has been exposed to rain or water.
2. If the device does not operate normally by following the operating instructions. Adjust only those controls that are covered by the operating instructions as an improper adjustment of the controls may result in damage and will often require extensive work by a qualified technician to restore the device to its normal operation.
3. If the device has been dropped or the chassis has been damaged.
4. If the device exhibits a distinct change in performance.

##### REPLACEMENT PARTS:

When replacement parts are required, be sure the service technician has used replacement parts specified by the manufacturer or have the same characteristics as the original part. Unauthorized substitutions may result in fire, electric shock or other hazards.

For safety reasons, use only the Adapter provided with the unit or an authorized replacement adapter from SEOWON INTECH.

This Product is designed to be waterproof in compliance with IP68.

#### CONSIGNES IMPORTANTES AN MATIERE DE SÉCURITÉET D'INSTALLATION

##### MISE EN GARDE :

N'ESSAYEZ PAS DE RÉPARER VOUS-MÊME CE PRODUIT CAR L'OUVERTURE OU LE RETRAIT DU BOÎTIER POURRAIT VOUS EXPOSER À DES TENSIONS DANGEREUSES OU À D'AUTRES RISQUES. CONFIEZ LA RÉPARATION À UN PERSONNEL QUALIFIÉ.

##### ASSEMBLAGE :

Assemblez cet appareil uniquement suivant la description fournie dans les consignes relatives à l'installation. Le non-respect de ces consignes pourrait entraîner d'importantes lésions corporelles et/ou l'endommagement de l'appareil. Utilisez uniquement les supports fournis avec l'appareil. N'utilisez pas les accessoires non recommandés pour cet appareil car ils pourraient provoquer des accidents.

##### RÉPARATION :

Mettez l'appareil hors tension et confiez la réparation à un personnel qualifié dans les conditions ci-après :

1. Si l'intérieur de l'appareil a été exposé à la pluie ou à l'eau.
2. Si l'appareil ne fonctionne toujours pas après avoir suivi toutes les consignes d'utilisation. Réglez uniquement les commandes couvertes par les consignes d'utilisation car un mauvais réglage pourrait entraîner des dégâts et nécessiterait de longues heures de travail par un technicien qualifié pour rétablir le fonctionnement normal de l'appareil
3. Si l'appareil était tombé ou si le châssis a été endommagé.
4. Si vous constatez un changement notable des performances de l'appareil.

##### PIÈCES DE RECHANGE :

Lorsque le remplacement des pièces est nécessaire, assurez-vous que le technicien utilise les pièces de rechange spécifiées par le fabricant ou celles qui ont les mêmes caractéristiques que la pièce d'origine. Les substitutions non autorisées peuvent déclencher un incendie, un choc électrique ou d'autres risques.

Pour des raisons de sécurité, utilisez uniquement l'adaptateur fourni avec l'appareil ou un adaptateur de rechange autorisé de SEOWON INTECH.

Ce produit est conçu pour résister à toute forme d'immersion conformément à la norme IP68.



### Warranty Information

This product is the result of high-class craftsmanship based on strict quality control procedures.

- In case of Product failure or malfunction during normal usage, your product will be repaired free of charge within the Limited Warranty period.
- The Consumer shall bear any labor or parts charges not covered by this Limited Warranty.
- At the request for repair, you must provide the proof of purchase and the warranty.
- Keep the warranty in a safe location because it is not reissued.

Purchase date		
Quality warranty period	1 (one) year	
Seller		
Telephone number		
Consumer	Name	
	Address	
	Telephone number	
	E-mail	

The Consumer shall have no coverage or benefits under this Limited Warranty if the Product has been:

- Subjected to inappropriate use, improper storage, unauthorized repair, unauthorized modifications, neglect abuse, inadequate installation, misuse, damage caused by shipping, etc.
- Damaged from fire, flooding, windstorm, lighting, earthquake, theft, blown fuse, internet viruses, worms, Trojan Horses, etc.
- Treated with its Product Serial # removed or defaced.

### Legal Information

#### FCC Part 15.105

This equipment has been tested and found to comply with the limits for a Class A digital device, pursuant to part 15 of the FCC Rules. These limits are designed to provide reasonable protection against harmful interference when the equipment is operated in a commercial environment.

This equipment generates, uses, and can radiate radio frequency energy and, if not installed and used in accordance with the instruction manual, may cause harmful interference to radio communications. Operation of this equipment in a residential area is likely to cause harmful interference in which case the user will be required to correct the interference at his own expense.

#### FCC Part 15.19

This device complies with part 15 of the FCC Rules. Operation is subject to the following two conditions:

(1) This device may not cause harmful interference, and (2) this device must accept any interference received, including interference that may cause undesired operation.

#### FCC Part 15.21

Changes or modifications not expressly approved by the manufacturer (or party responsible) for compliance could void the user's authority to operate the equipment.

#### FCC Radiation Exposure Statement:

The output power from the device is below the threshold for requiring RF exposure evaluation and may be used in mobile conditions more than 20cm from the body.



FCC ID: V7MBSLC-120T420GA

## Quick Installation Guide

### LTE Network Outdoor CPE

# SLC-120T420GA



## Legal Information

### FCC Part 15.105

This equipment has been tested and found to comply with the limits for a Class A digital device, pursuant to part 15 of the FCC Rules. These limits are designed to provide reasonable protection against harmful interference when the equipment is operated in a commercial environment.

This equipment generates, uses, and can radiate radio frequency energy and, if not installed and used in accordance with the instruction manual, may cause harmful interference to radio communications. Operation of this equipment in a residential area is likely to cause harmful interference in which case the user will be required to correct the interference at his own expense.

### FCC Part 15.19

This device complies with part 15 of the FCC Rules. Operation is subject to the following two conditions:

(1) This device may not cause harmful interference, and (2) this device must accept any interference received, including interference that may cause undesired operation.

### FCC Part 15.21

Changes or modifications not expressly approved by the manufacturer (or party responsible) for compliance could void the user's authority to operate the equipment.

### **FCC Radiation Exposure Statement:**

The output power from the device is below the threshold for requiring RF exposure evaluation and may be used in portable conditions within **20cm** of the body.