

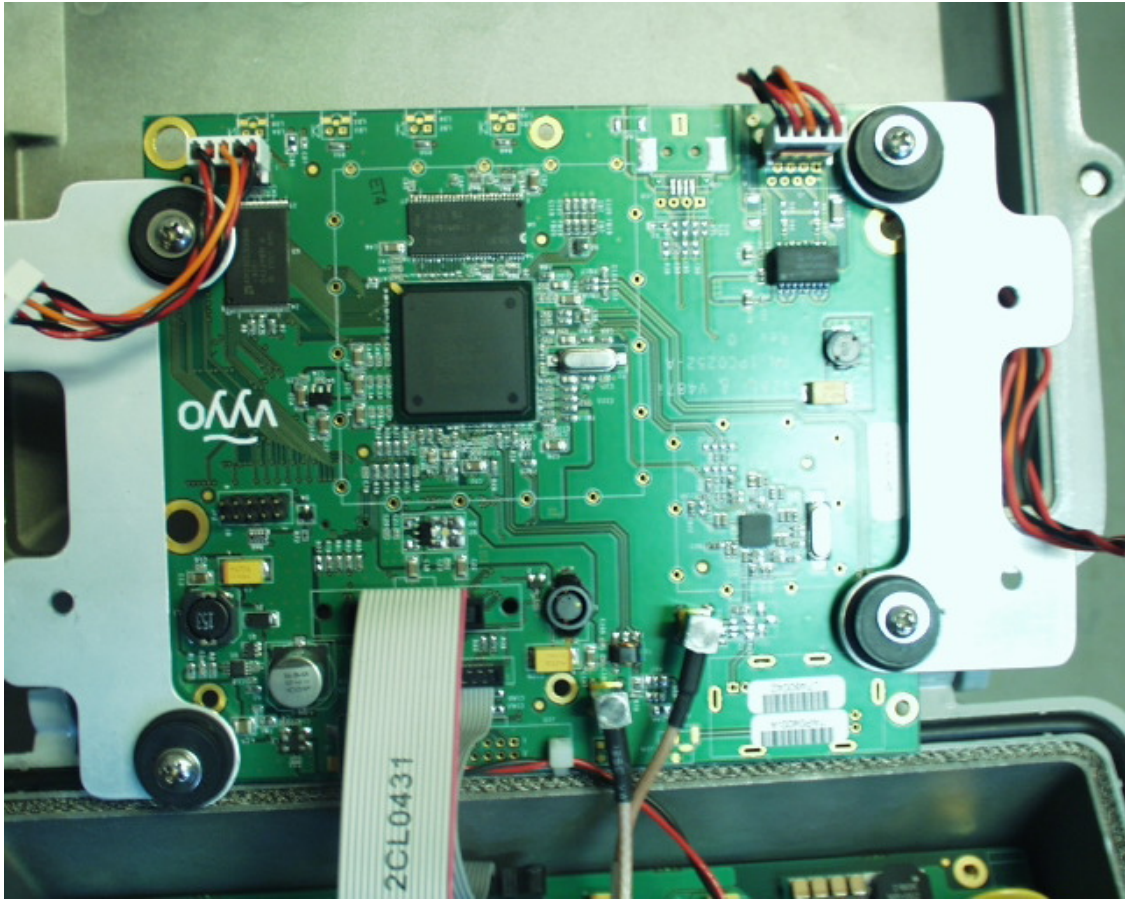
Picture 5: V487 box open
Modem card – bottom side



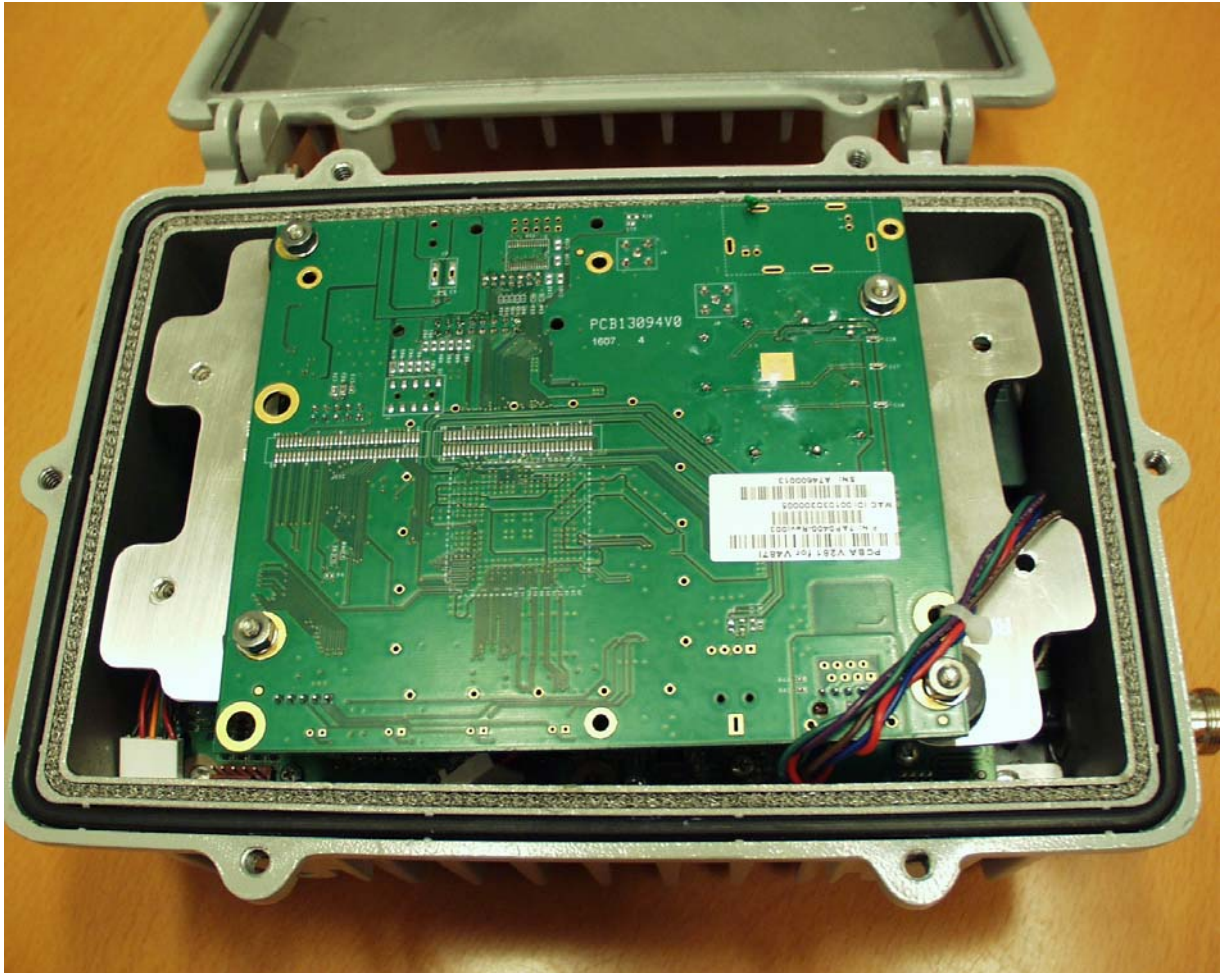
Picture 6: V487 box open

Upper PCB is the Modem card – top side

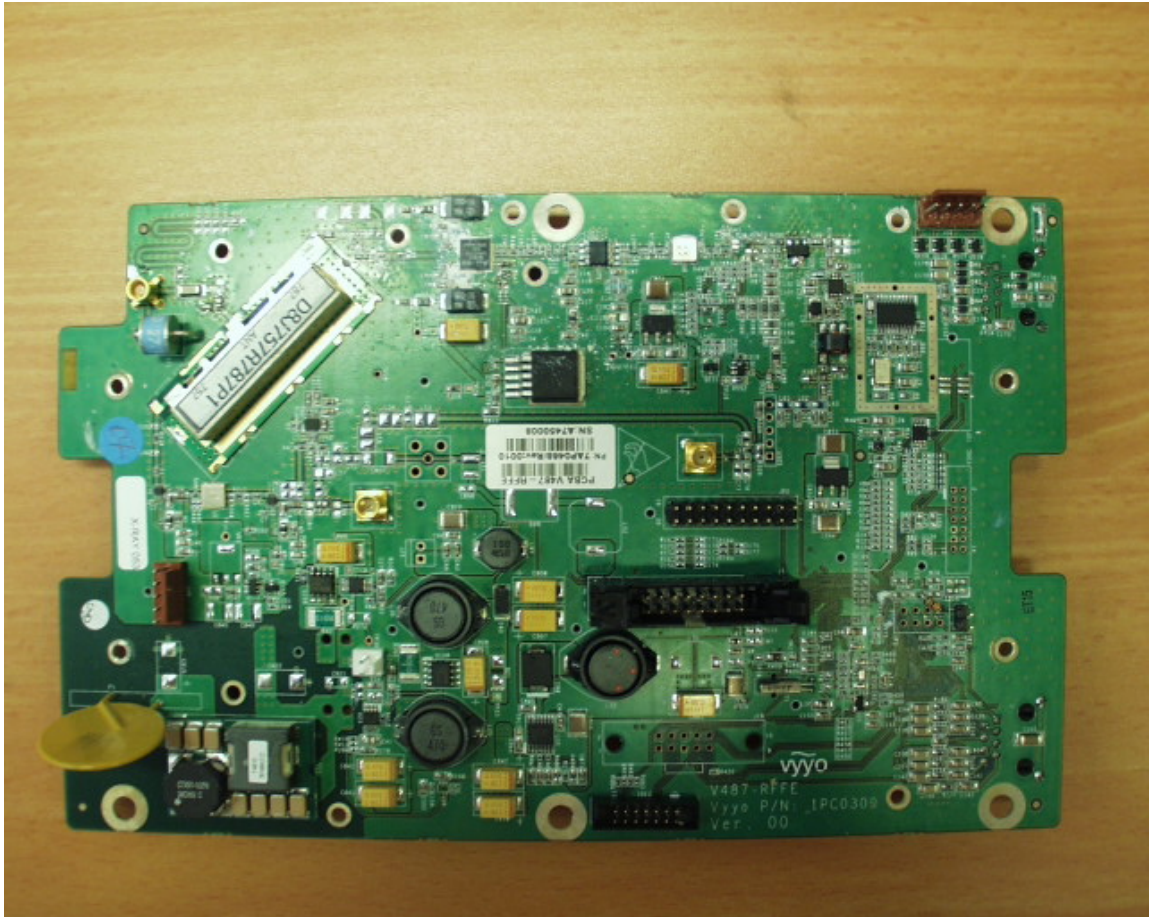
Lower PCB is the RFFE (Radio Frequency Front End) card – top side



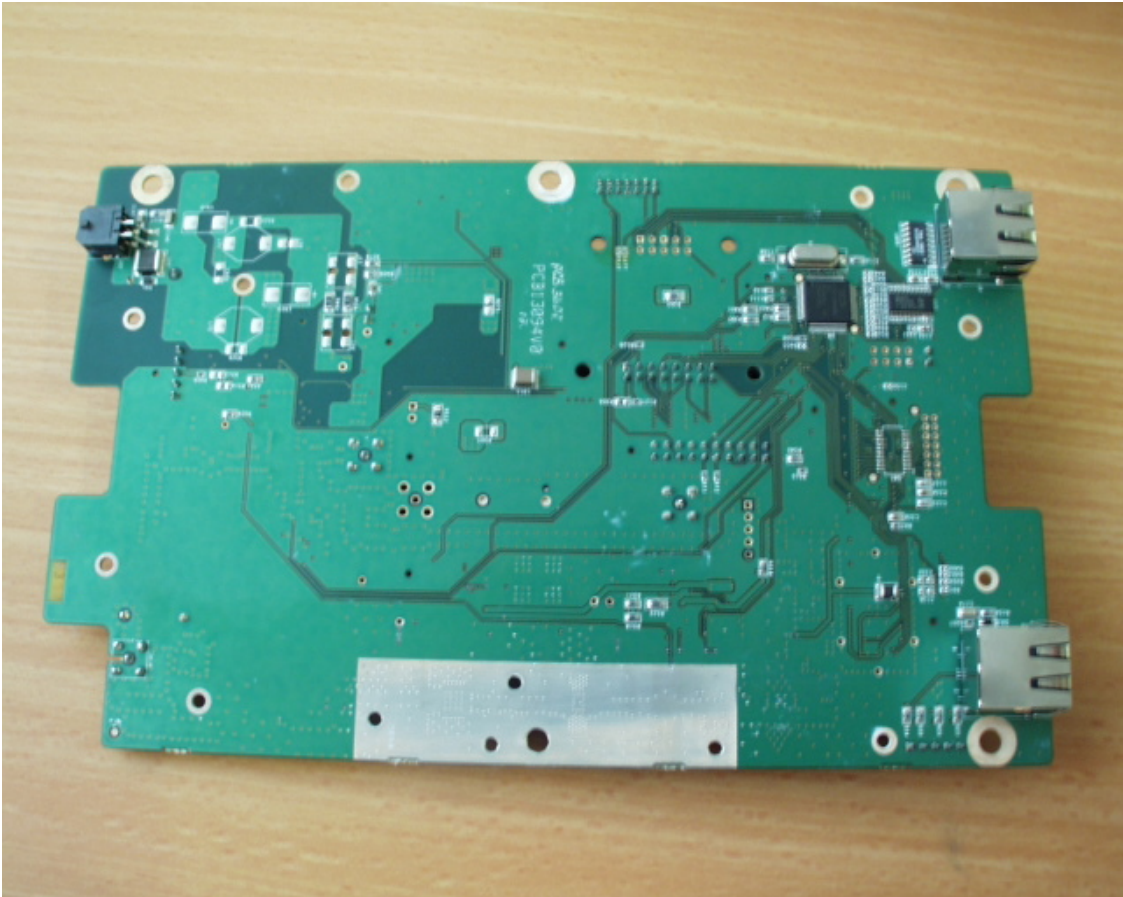
Picture 7: V487 Modem card – top side



Picture 8: V487 Modem card – bottom side



Picture 9: V487 RFFE (Radio Frequency Front End) card– top side



Picture 10: V487 RFFE (Radio Frequency Front End) card– bottom side