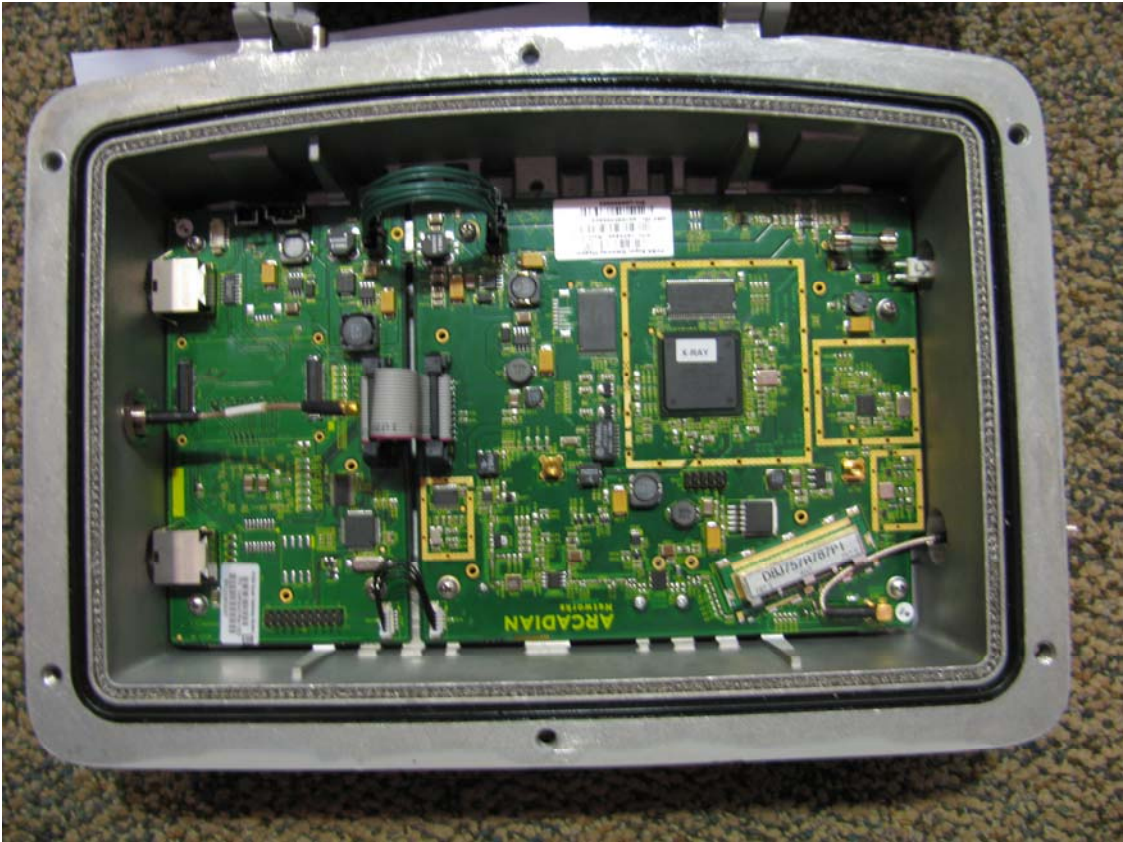


Picture 4: Open

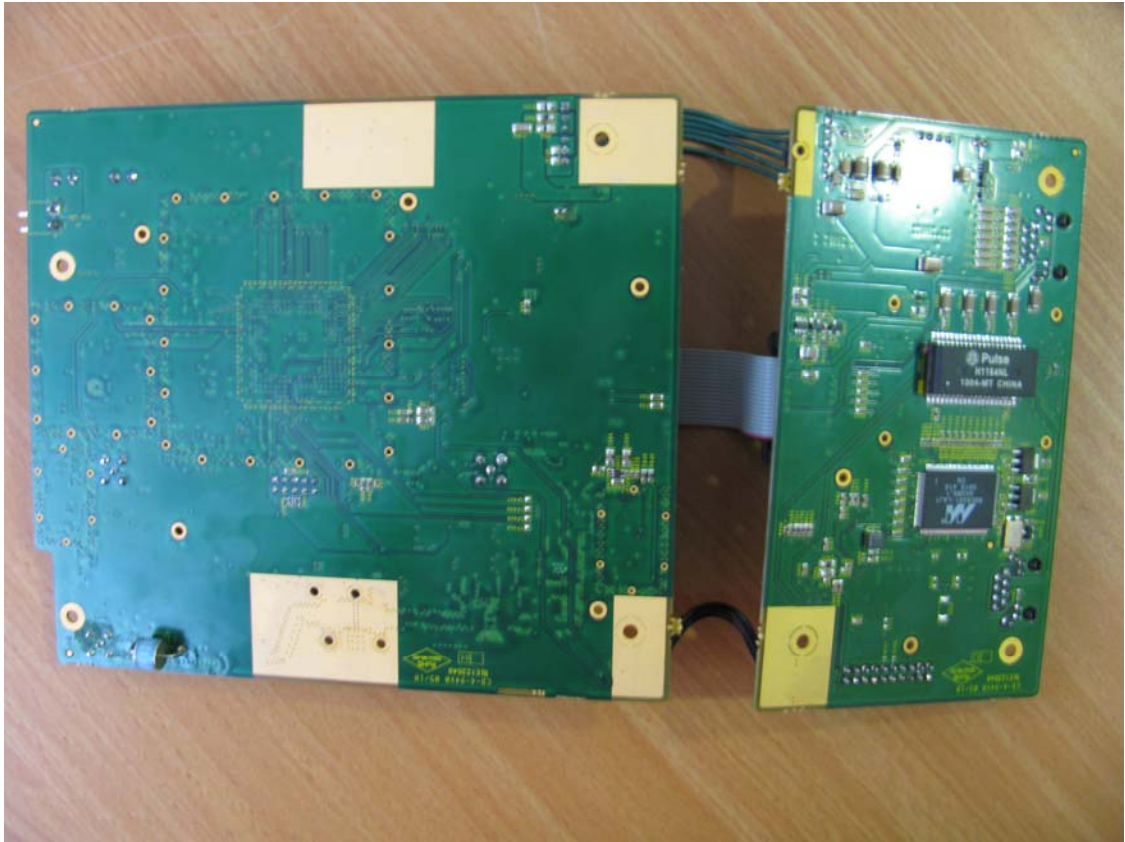


- Lower side, right PCB: RF of 700 MHz radio
- Lower side, left PCB: Mother board.
The module in the middle of this PCB is optional Licensed 900 MHz module which is FCC modular approved. This TX of this module was not enabled in the tests
- Upper side, Left: Core board of 902-928 MHz radio
- Upper side , Right: Register board (RF PCB) of the 902-928 MHz radio

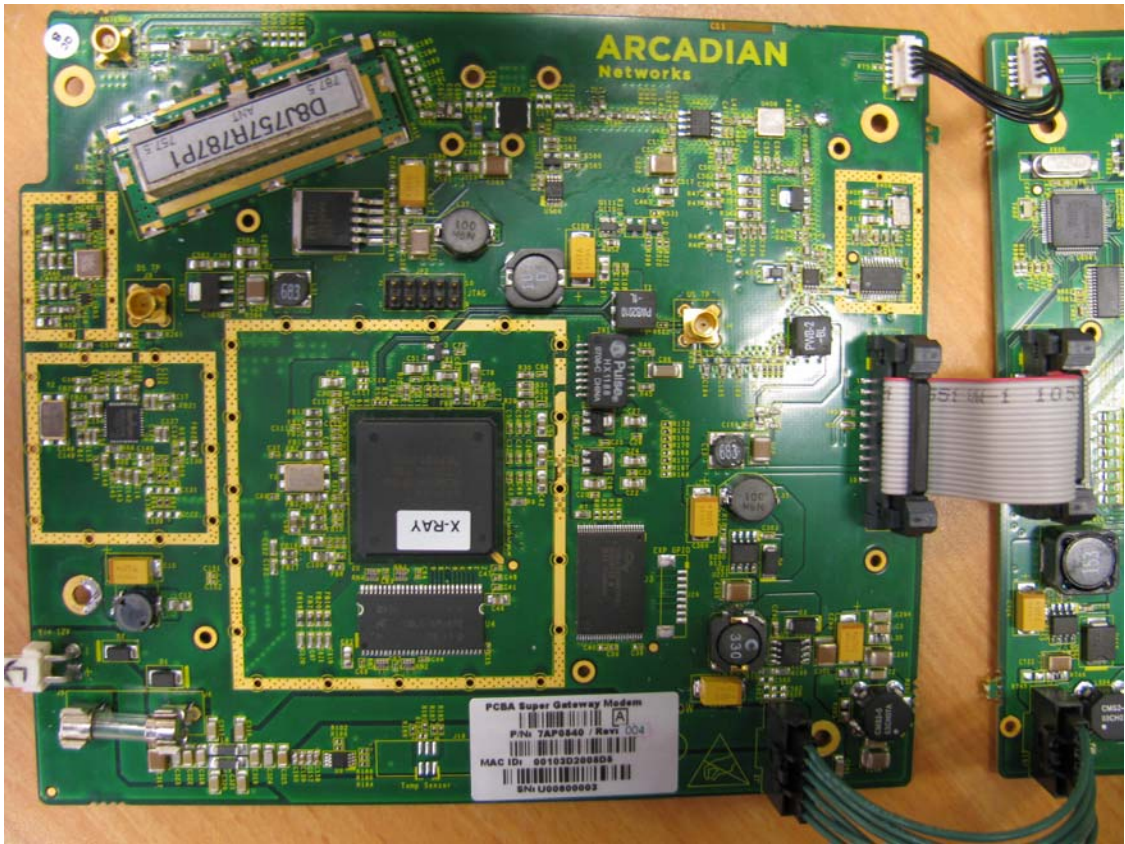
Picture 5: RF of 700 MHz radio & Mother board PCB - CS



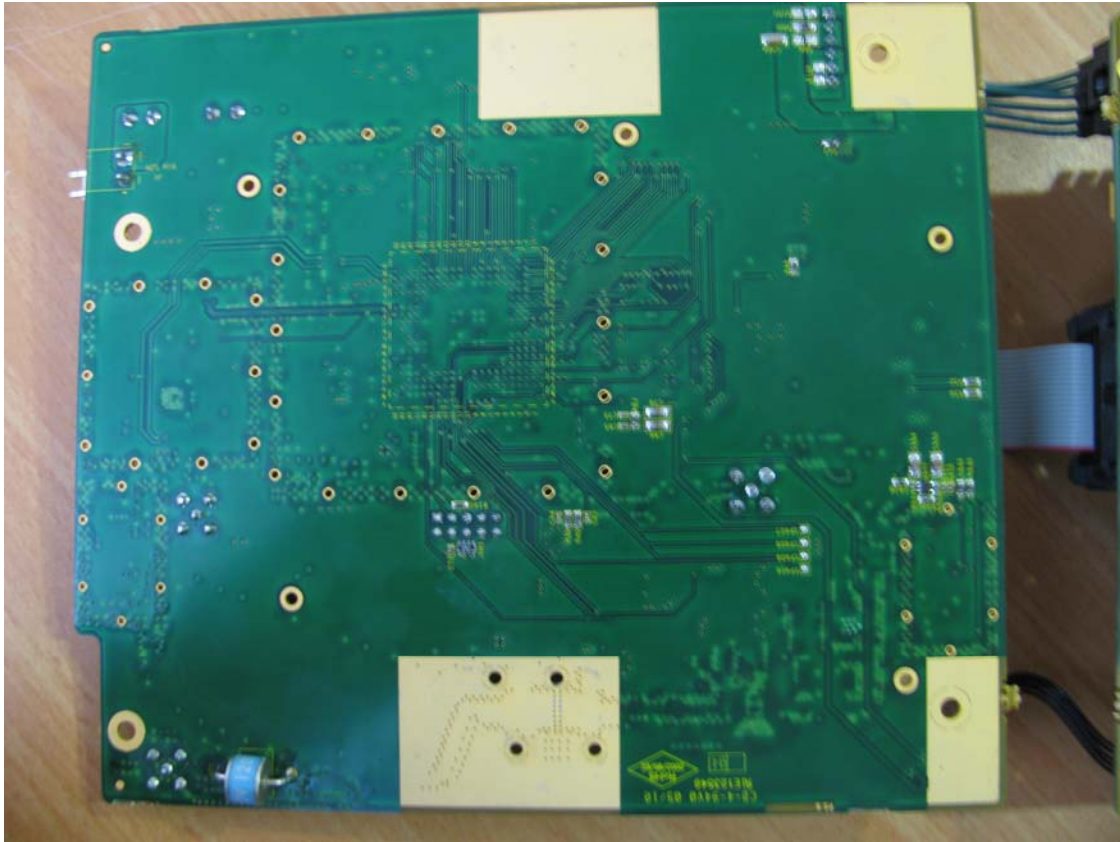
Picture 6: : RF of 700 MHz radio & Mother board PCB - PS



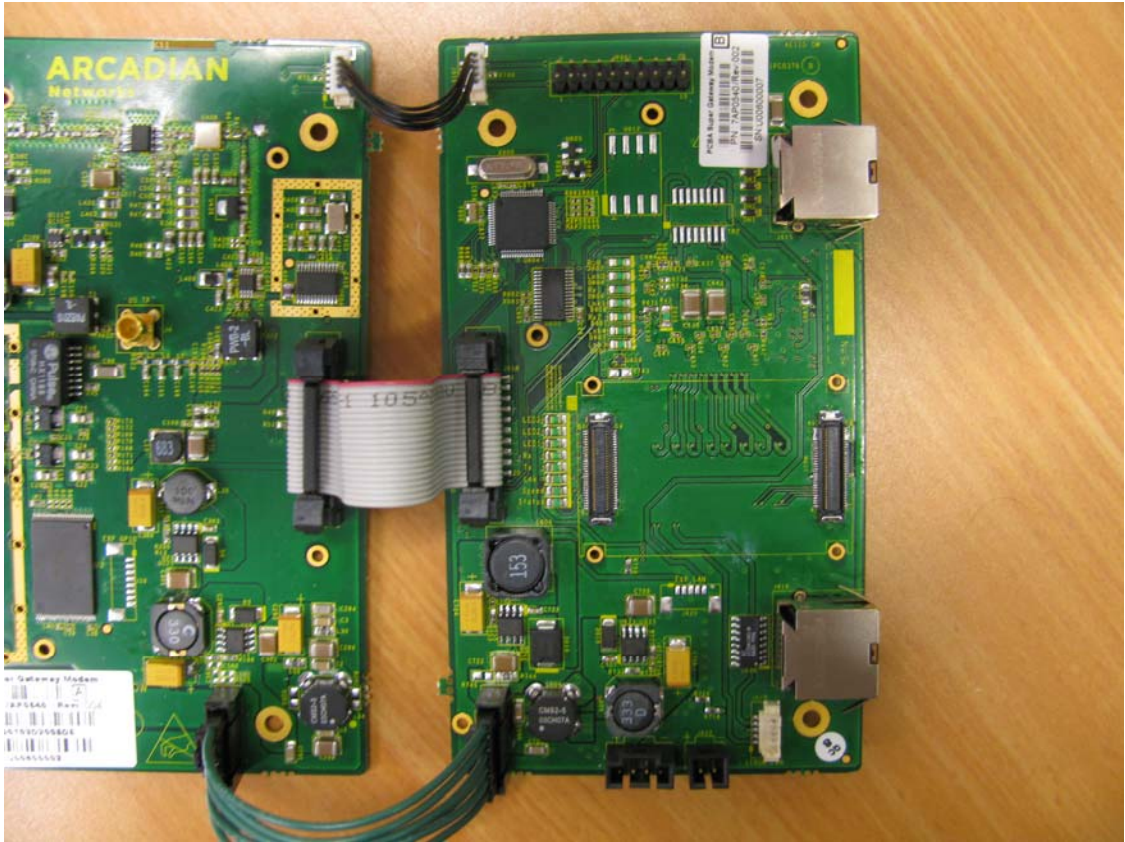
Picture 7: RF of 700 MHz radio PCB - CS



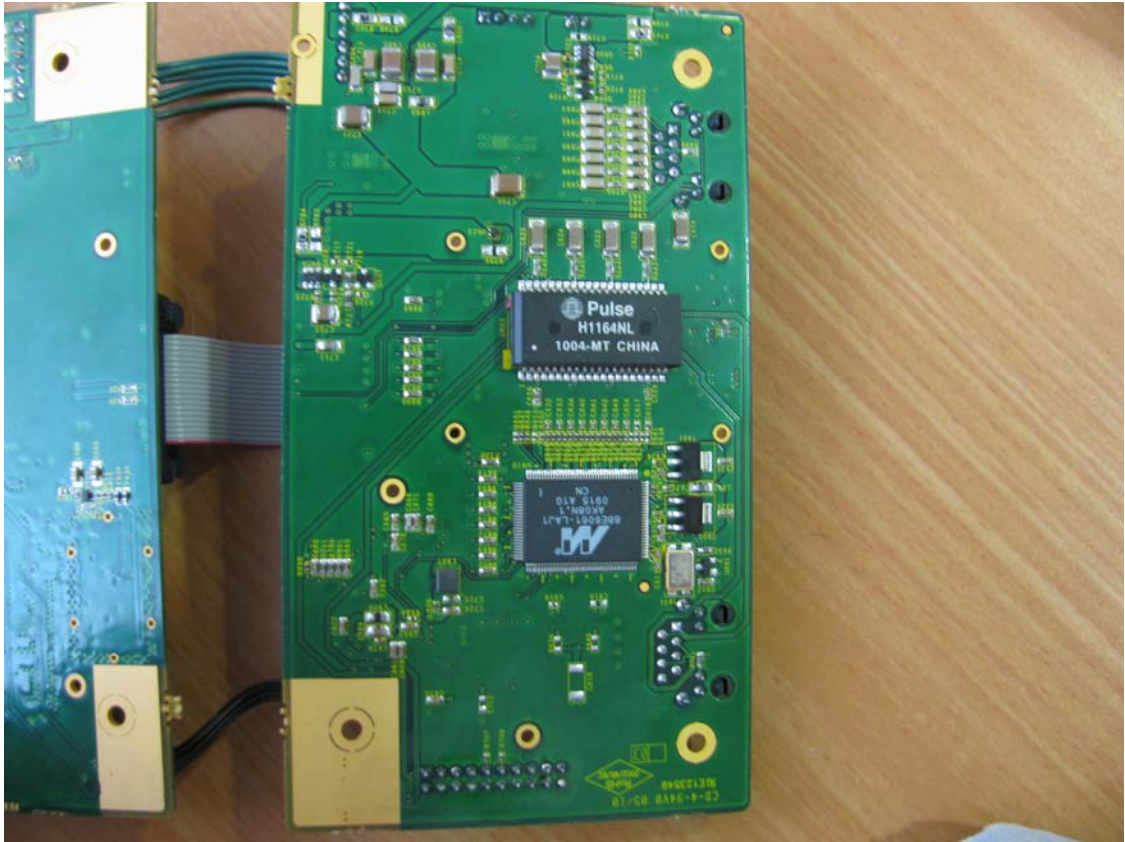
Picture 8: RF of 700 MHz radio PCB – PS



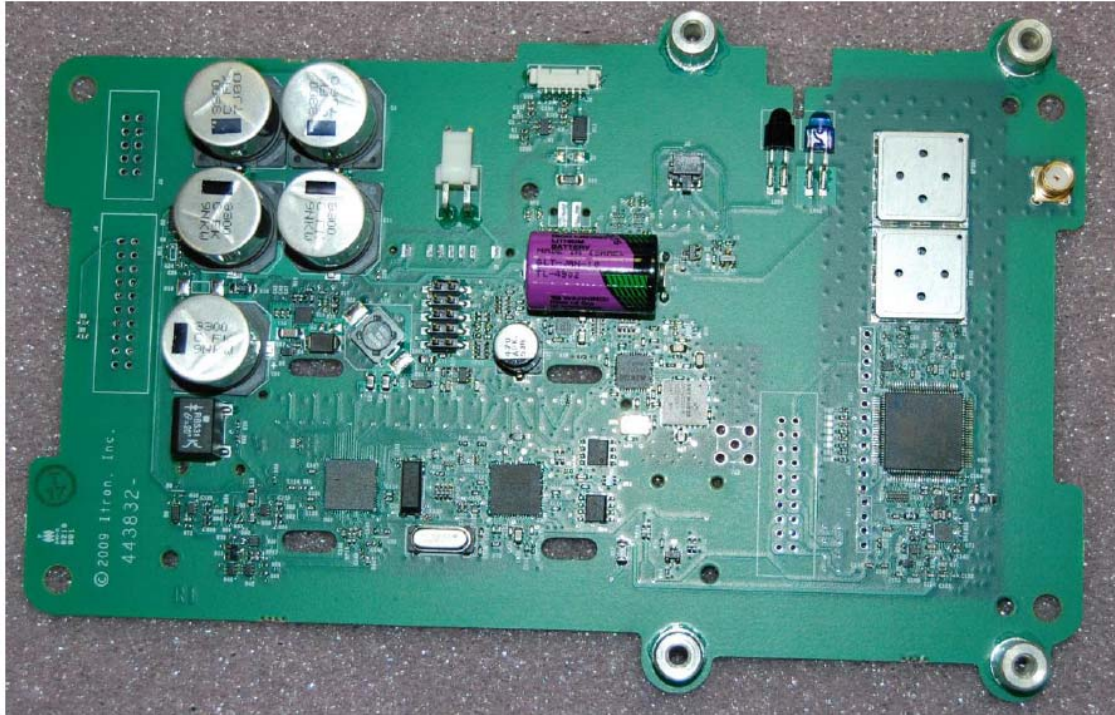
Picture 9: Mother board PCB – CS



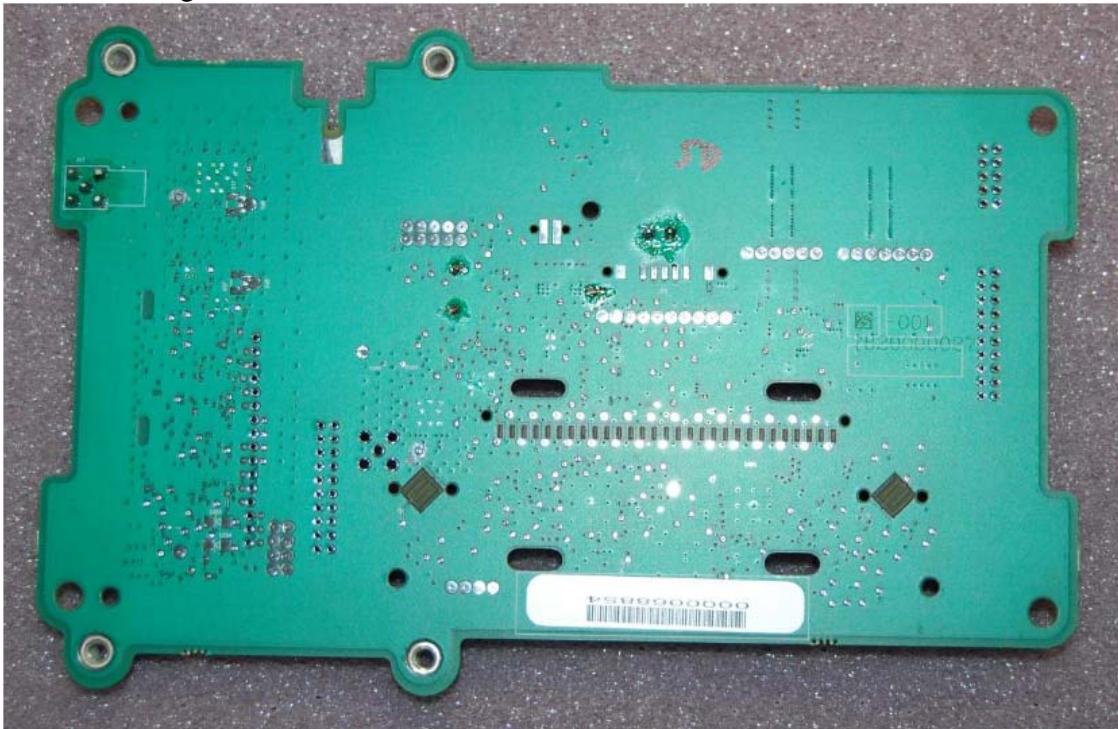
Picture 10: Mother board PCB – PS



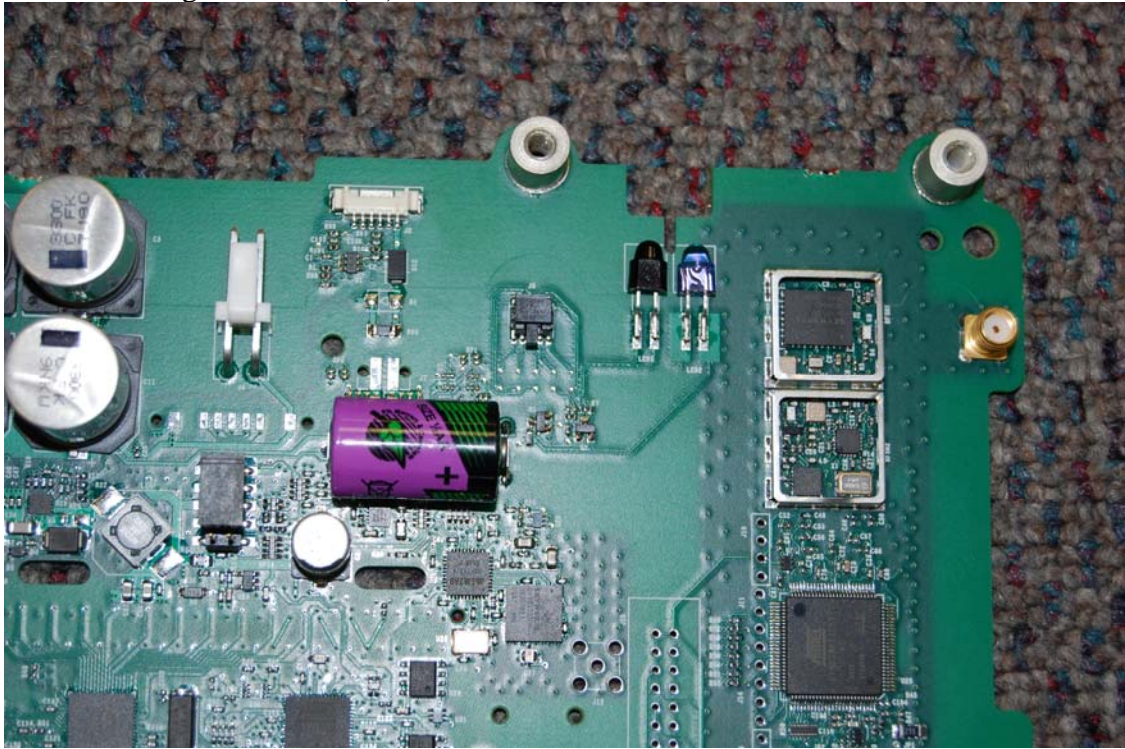
Picture 10: Register board (RF) of the 902-928 MHz radio – PS



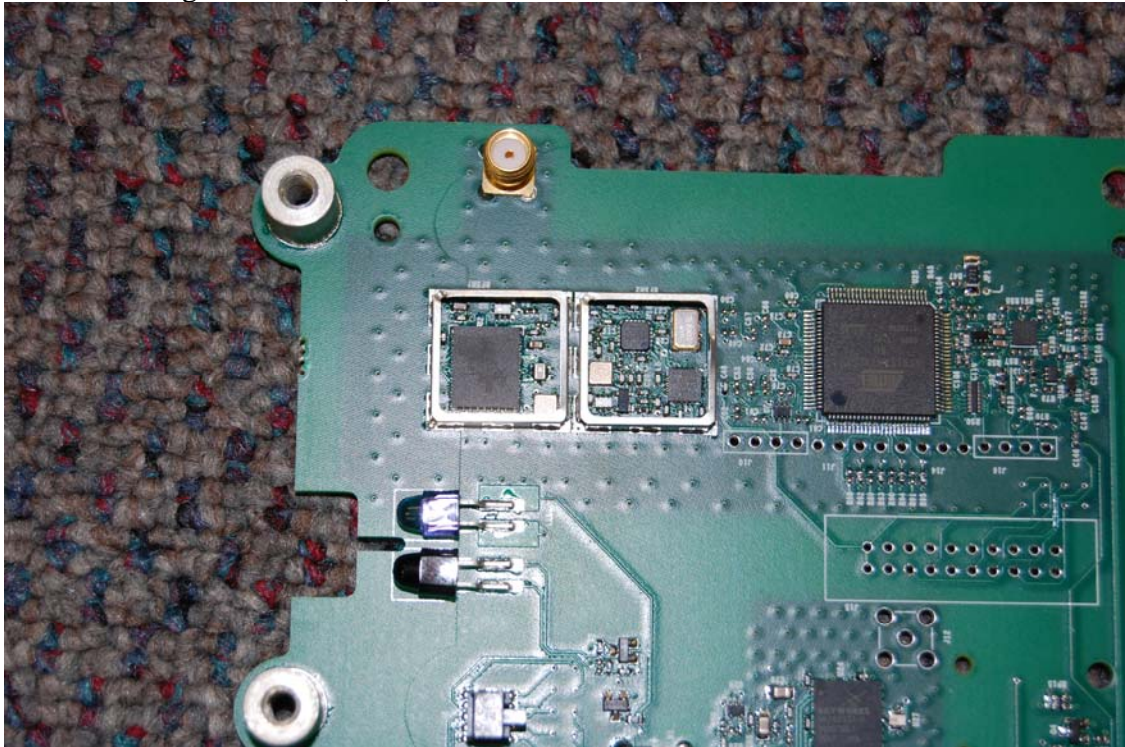
Picture 11: Register board PCB – PS



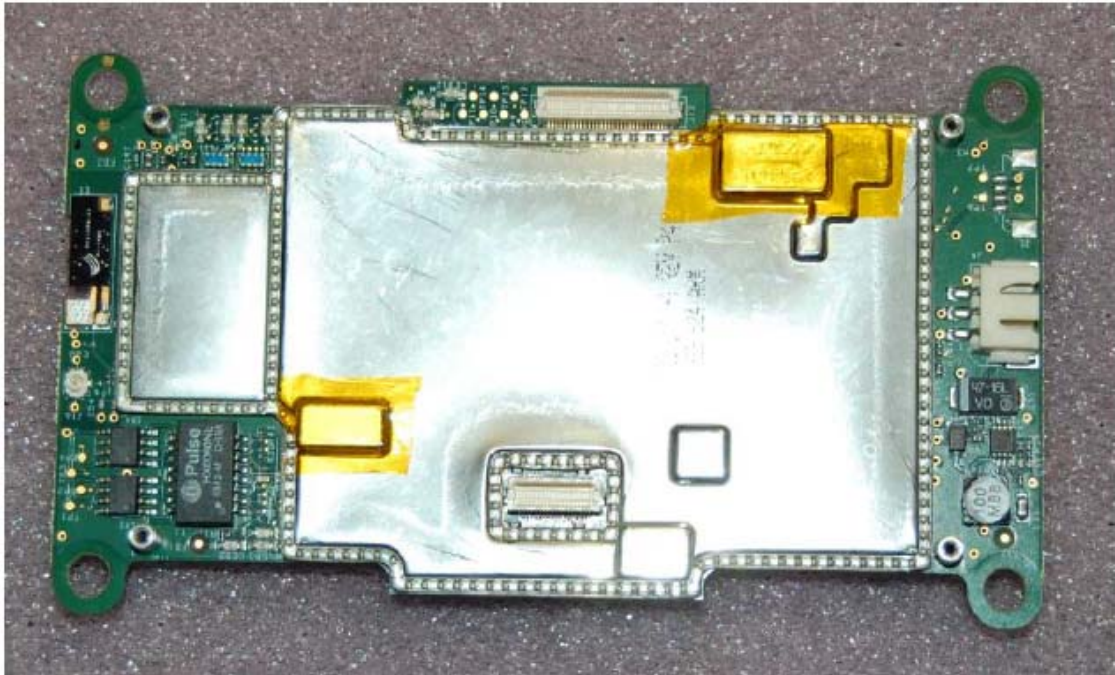
Picture 12: Register board (RF) of the 902-928 MHz radio – PS - removed cover



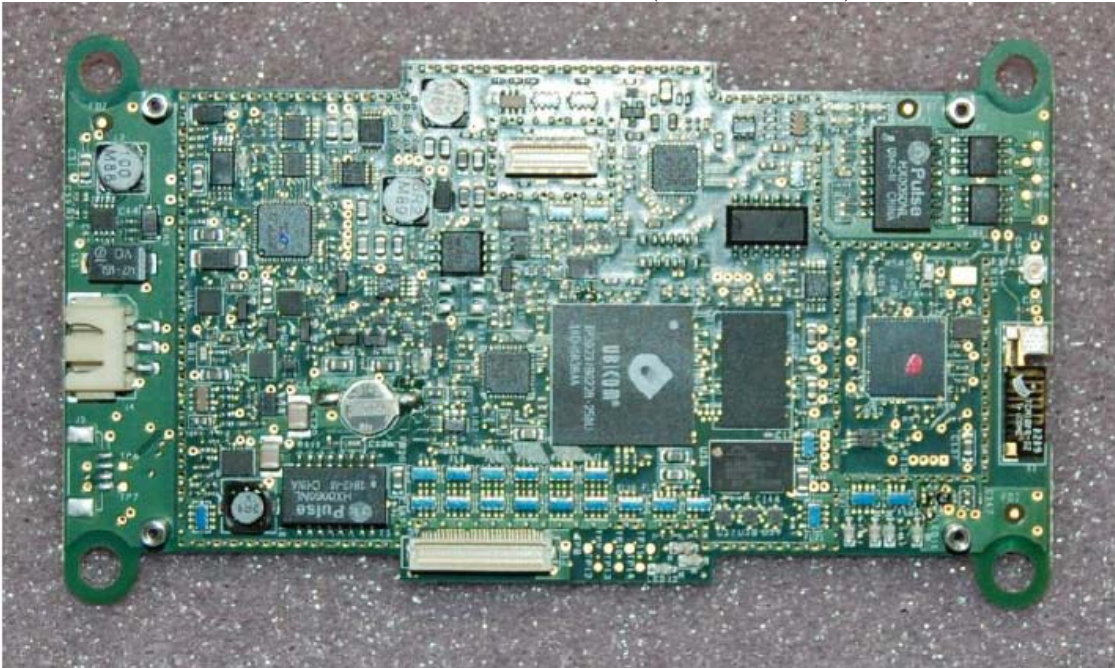
Picture 13: Register board (RF) of the 902-928 MHz radio – PS - removed cover



Picture 14: Core board of 902-928 MHz radio – upper side



Picture 15: Core board of 902-928 MHz radio – CS (removed cover)



Picture 16: Core board of 902-928 MHz radio – PS

