

July 26, 2009



## Arcadian Networks ABR757/BSR757 transmitter pictures

### Power amplifier box

The power amplifier box includes three PA plug-in modules. The box is operated by 28VDC, from external power supply. Internally the 28 V is delivered to each module. Each PA module consumes 6A when operating at the maximum rated RF Output.



Picture 1: PA front panel above the PA power supply

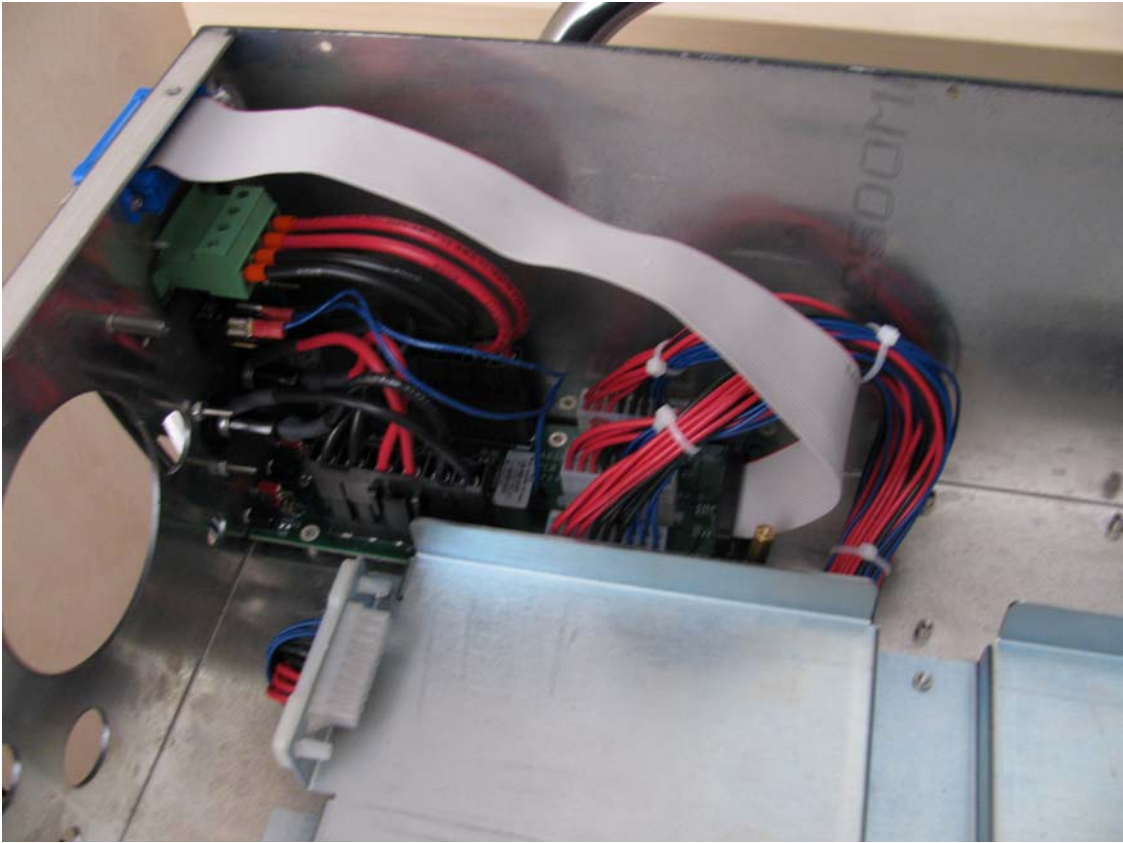


Figure 2: Power Amplifier Rear panel

The DC wires and control are connected from the power supply (below) to the PA



**Picture 3: Single RF module in PA box**This picture shows the PA box with upper cover removed, and with a single PA module (two PA modules are removed).



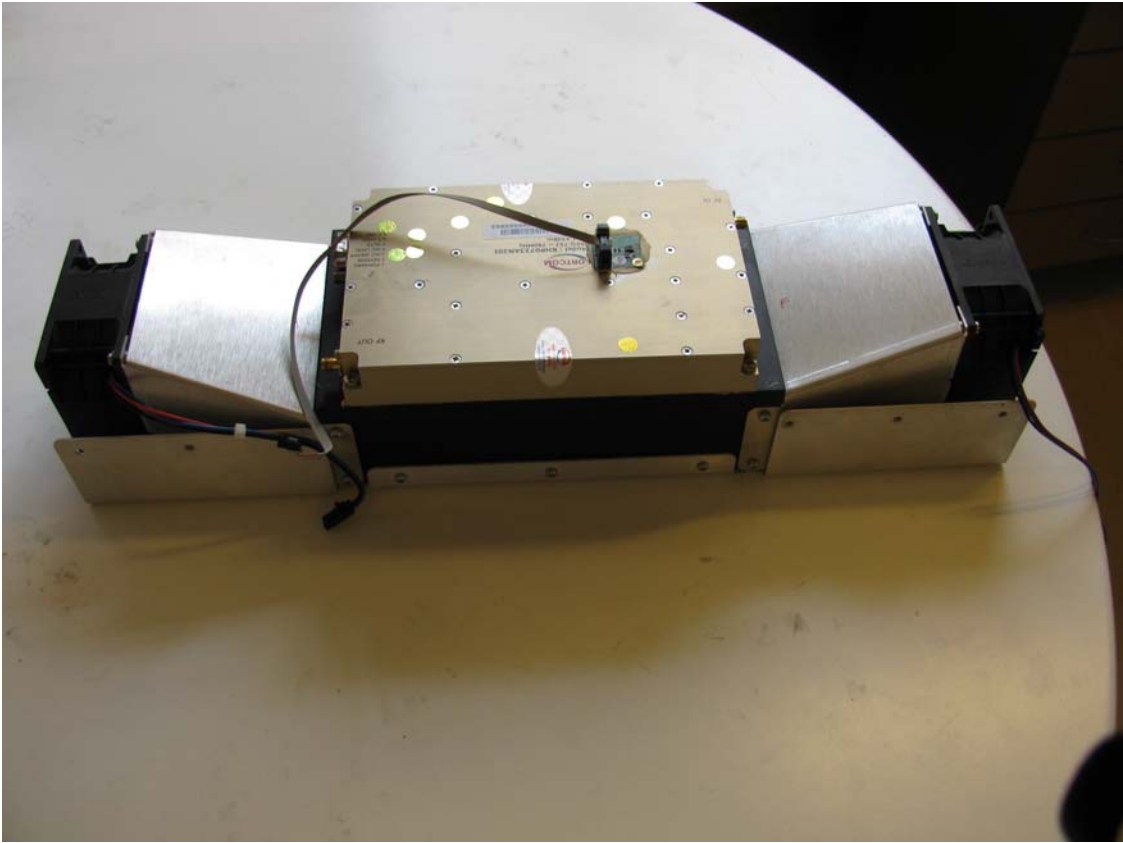
**Picture 4: PA Box DC and control**

This picture shows the PA box with upper cover removed, and the three PA modules are removed. The DC and control cable can be seen.



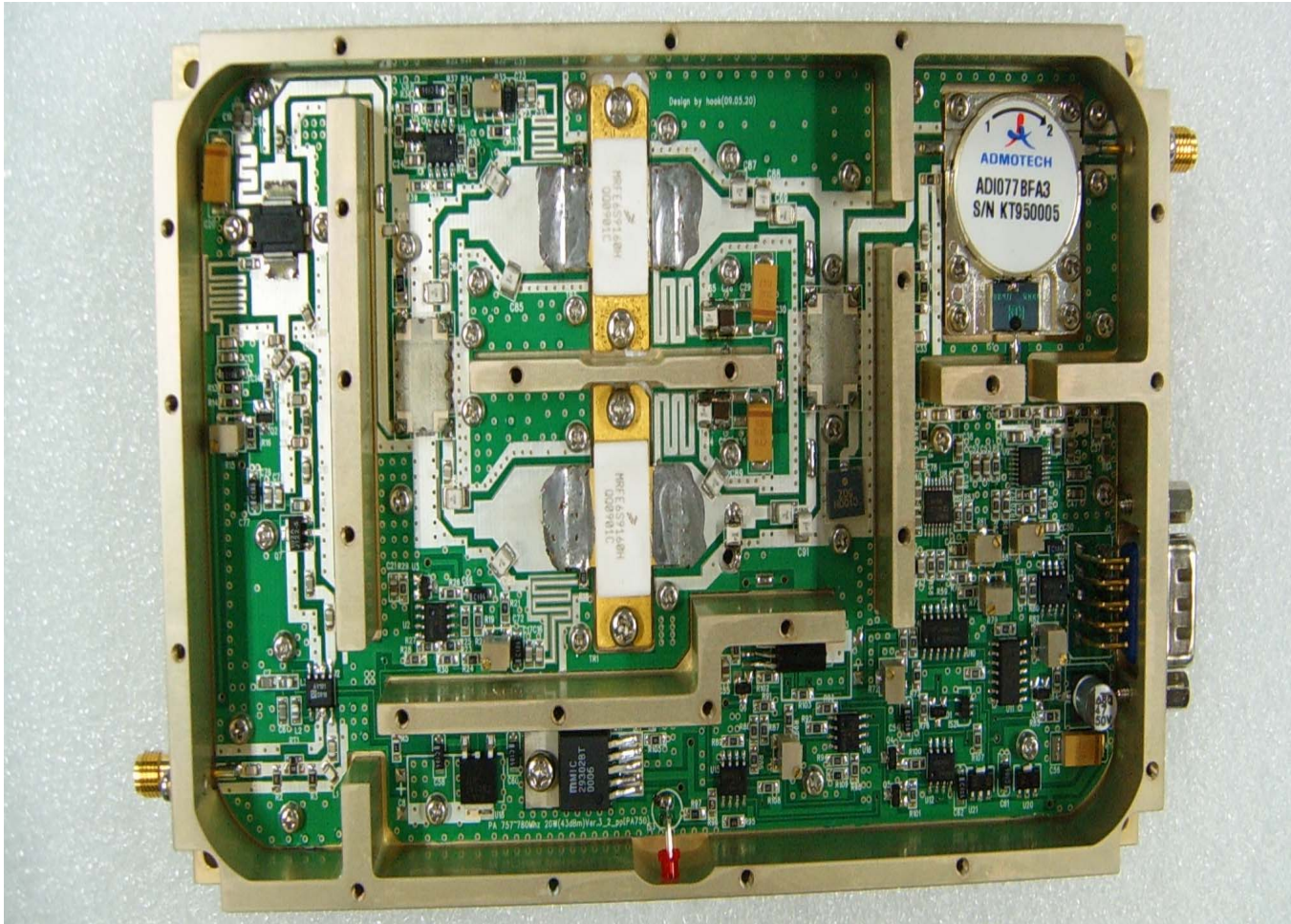
**Picture 5: PA module (front)**

The front fan and the heat sink can be seen.

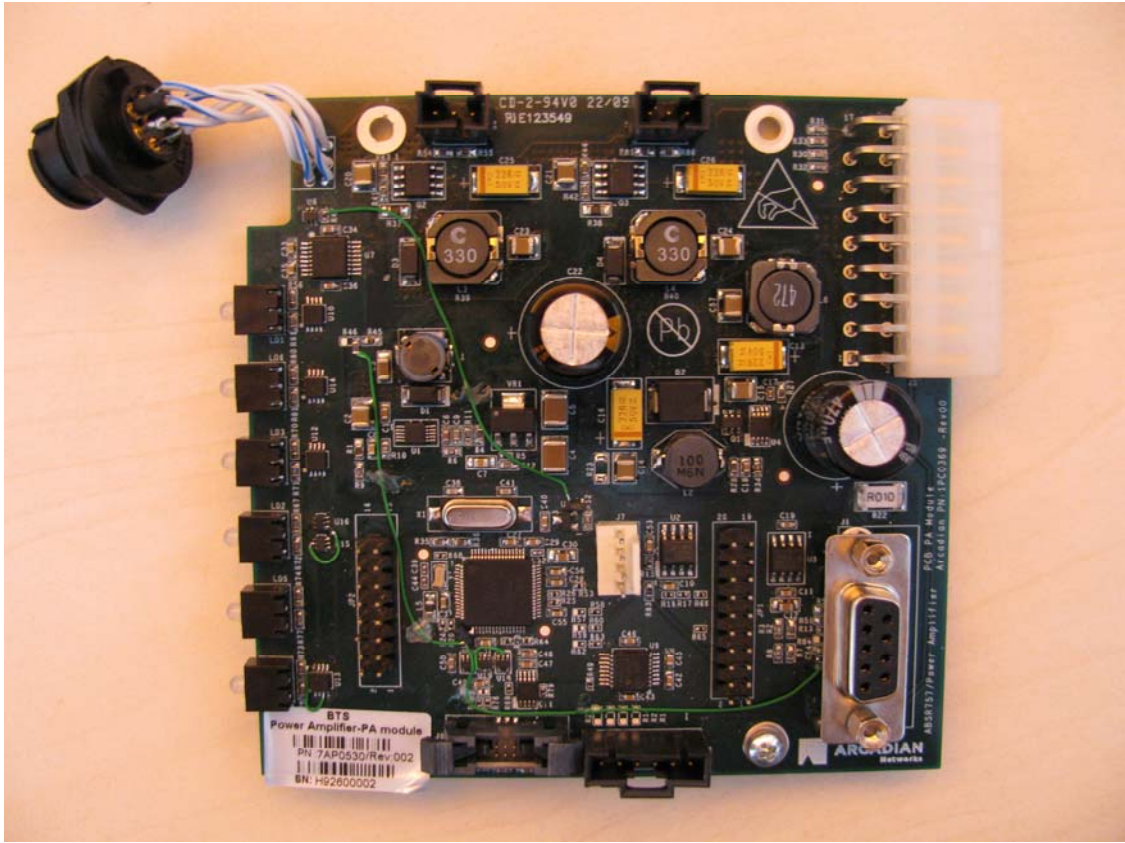


**Picture 6: RF module on heat sink & fan**

The PA RF module can be seen on the heat sink, and with front and rear fans. A temperature sensor is seen on the PA RF module (the sensor is connected to the control PCBA).



**Picture 7: PA RF PCB**



**Picture 8: PA Box control PCBA**

The DC voltage is delivered through the right upper connector. The 9 pin D-type connector is connected to the RF PA module.