



Applicant:	Kyocera
FCC ID:	V65SCP-3820
Report #:	CT-3820-9B1-0610-R0

**EXHIBIT 9 APPENDIX B1: SAR DISTRIBUTION PLOTS (HEAD)**

**CELL**

Applicant:	Kyocera
FCC ID:	V65SCP-3820
Report #:	CT-3820-9B1-0610-R0

Date: 6/9/2010

Test Laboratory: Comptest/Kyocera

**FCC SCP-3820 CDMA-800 Ch1013, Left Cheek**

Communication System: CDMA-800, Frequency: 824.7 MHz, Duty Cycle: 1:1

Medium: Head 835 MHz, Medium parameters used:  $f = 824.7 \text{ MHz}$ ;  $\sigma = 0.92 \text{ mho/m}$ ;  $\epsilon_r = 42.1$ ;  $\rho = 1000 \text{ kg/m}^3$

Phantom: SAM 12, Phantom section: Left Section

**DASY4 Configuration:**

Probe: ET3DV6 - SN1663, ConvF(6.44, 6.44, 6.44), Calibrated: 9/10/2009

Sensor-Surface: 4mm (Mechanical Surface Detection),

Electronics: DAE4 Sn527, Calibrated: 7/9/2009

Measurement SW: DASY4, V4.7 Build 80

Postprocessing SW: SEMCAD, V1.8 Build 186

**Temperature:** Room T = 21.8 +/- 1 deg C, Liquid T = 22.0 +/- 1 deg C

**CDMA-800 Ch1013 LC/Area Scan (111x61x1):** Measurement grid: dx=15mm, dy=15mm

Maximum value of SAR (interpolated) = 1.49 mW/g

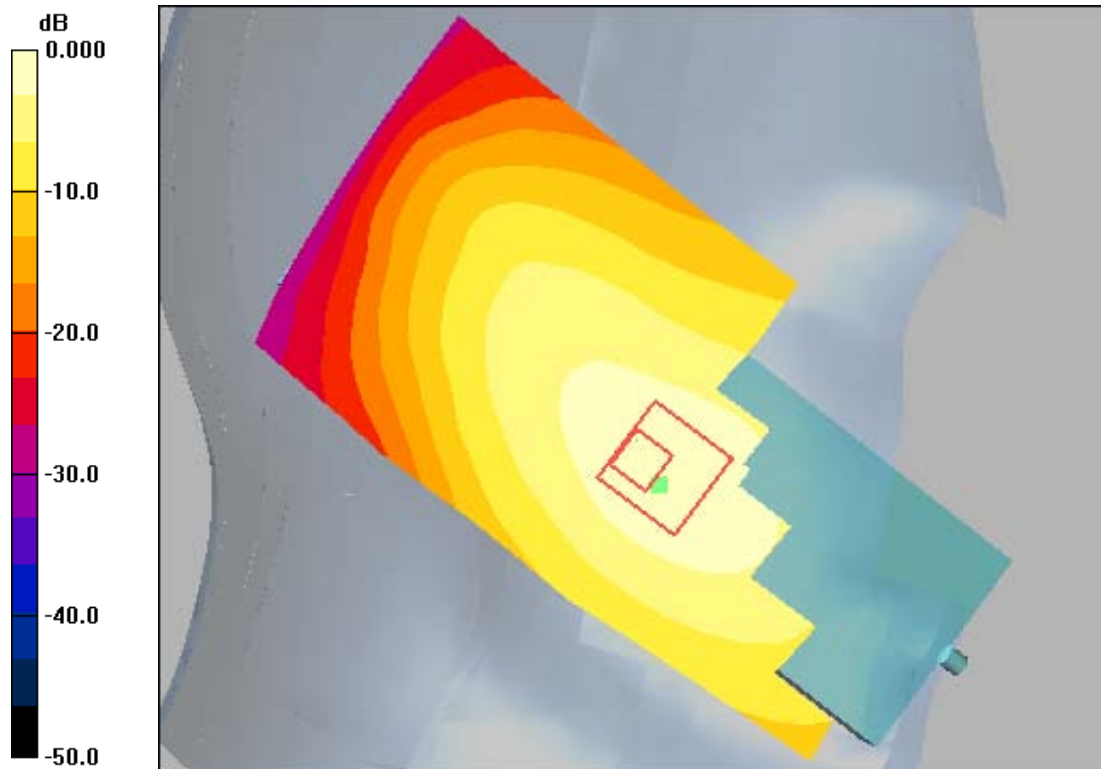
**CDMA-800 Ch1013 LC/Zoom Scan (7x7x7)/Cube 0:** Measurement grid: dx=5mm, dy=5mm, dz=5mm

Reference Value = 32.6 V/m; Power Drift = 0.035 dB

Peak SAR (extrapolated) = 2.89 W/kg

**SAR(1 g) = 1.39 mW/g; SAR(10 g) = 0.878 mW/g**

Maximum value of SAR (measured) = 1.54 mW/g



0 dB = 1.49mW/g

Test Laboratory: Comptest/Kyocera

**FCC SCP-3820 CDMA-800 Ch383, Left Cheek**

Communication System: CDMA-800, Frequency: 836.49 MHz, Duty Cycle: 1:1

Medium: Head 835 MHz, Medium parameters used:  $f = 836.5 \text{ MHz}$ ;  $\sigma = 0.92 \text{ mho/m}$ ;  $\epsilon_r = 42.1$ ;  $\rho = 1000 \text{ kg/m}^3$

Phantom: SAM 12, Phantom section: Left Section

**DASY4 Configuration:**

Probe: ET3DV6 - SN1663, ConvF(6.44, 6.44, 6.44), Calibrated: 9/10/2009

Sensor-Surface: 4mm (Mechanical Surface Detection),

Electronics: DAE4 Sn527, Calibrated: 7/9/2009

Measurement SW: DASY4, V4.7 Build 80

Postprocessing SW: SEMCAD, V1.8 Build 186

**Temperature:** Room T = 21.8 +/- 1 deg C, Liquid T = 22.0 +/- 1 deg C

**CDMA-800 Ch383 LC/Area Scan (111x61x1):** Measurement grid: dx=15mm, dy=15mm

Maximum value of SAR (interpolated) = 1.56 mW/g

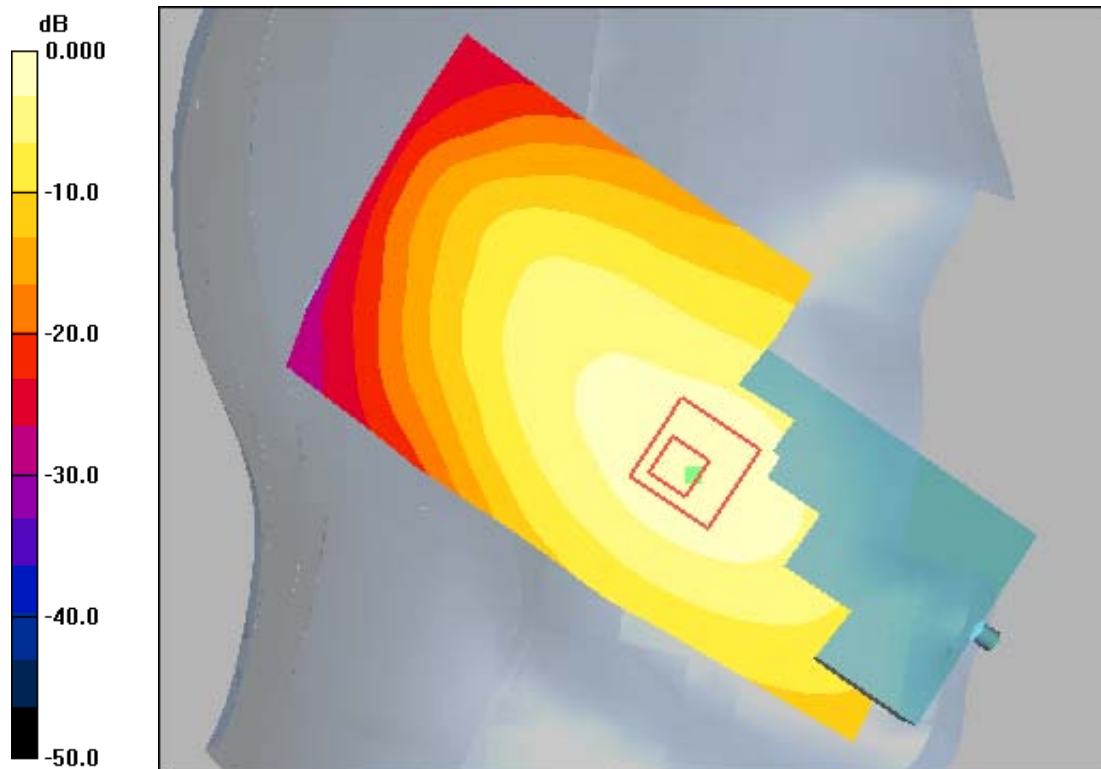
**CDMA-800 Ch383 LC/Zoom Scan (7x7x7)/Cube 0:** Measurement grid: dx=5mm, dy=5mm, dz=5mm

Reference Value = 34.1 V/m; Power Drift = -0.164 dB

Peak SAR (extrapolated) = 2.76 W/kg

**SAR(1 g) = 1.44 mW/g; SAR(10 g) = 0.921 mW/g**

Maximum value of SAR (measured) = 1.58 mW/g



0 dB = 1.56mW/g

Applicant:	Kyocera
FCC ID:	V65SCP-3820
Report #:	CT-3820-9B1-0610-R0

Date: 6/9/2010

Test Laboratory: Comptest/Kyocera

**FCC SCP-3820 CDMA-800 Ch777, Left Cheek**

Communication System: CDMA-800, Frequency: 848.31 MHz, Duty Cycle: 1:1

Medium: Head 835 MHz, Medium parameters used:  $f = 848.5$  MHz;  $\sigma = 0.92$  mho/m;  $\epsilon_r = 42.1$ ;  $\rho = 1000$  kg/m<sup>3</sup>

Phantom: SAM 12, Phantom section: Left Section

**DASY4 Configuration:**

Probe: ET3DV6 - SN1663, ConvF(6.44, 6.44, 6.44), Calibrated: 9/10/2009

Sensor-Surface: 4mm (Mechanical Surface Detection),

Electronics: DAE4 Sn527, Calibrated: 7/9/2009

Measurement SW: DASY4, V4.7 Build 80

Postprocessing SW: SEMCAD, V1.8 Build 186

**Temperature:** Room T = 21.8 +/- 1 deg C, Liquid T = 22.0 +/- 1 deg C

**CDMA-800 Ch777 LC/Area Scan (111x61x1):** Measurement grid: dx=15mm, dy=15mm

Maximum value of SAR (interpolated) = 1.61 mW/g

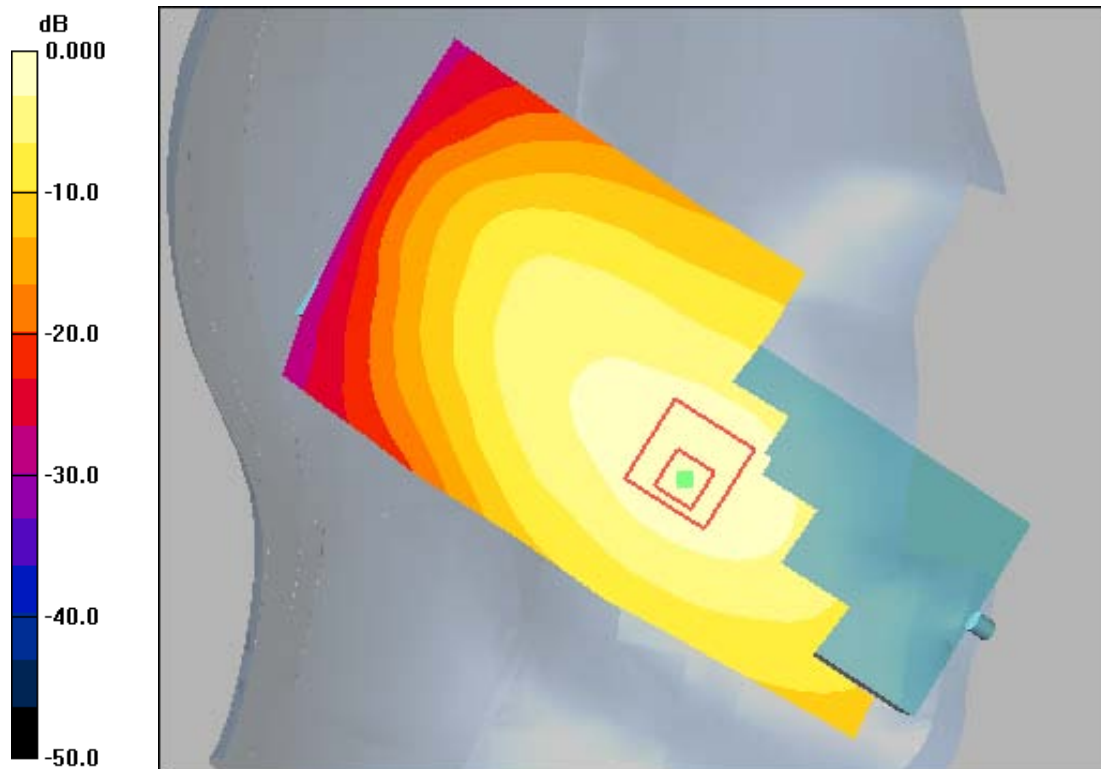
**CDMA-800 Ch777 LC/Zoom Scan (7x7x7)/Cube 0:** Measurement grid: dx=5mm, dy=5mm, dz=5mm

Reference Value = 34.2 V/m; Power Drift = -0.140 dB

Peak SAR (extrapolated) = 2.80 W/kg

**SAR(1 g) = 1.49 mW/g; SAR(10 g) = 0.939 mW/g**

Maximum value of SAR (measured) = 1.64 mW/g



0 dB = 1.61mW/g

Applicant:	Kyocera
FCC ID:	V65SCP-3820
Report #:	CT-3820-9B1-0610-R0

Date: 6/9/2010

Test Laboratory: Comptest/Kyocera

**FCC SCP-3820 CDMA-800 Ch383, Left Tilt**

Communication System: CDMA-800, Frequency: 836.49 MHz, Duty Cycle: 1:1

Medium: Head 835 MHz, Medium parameters used:  $f = 836.5$  MHz;  $\sigma = 0.92$  mho/m;  $\epsilon_r = 42.1$ ;  $\rho = 1000$  kg/m<sup>3</sup>

Phantom: SAM 12, Phantom section: Left Section

**DASY4 Configuration:**

Probe: ET3DV6 - SN1663, ConvF(6.44, 6.44, 6.44), Calibrated: 9/10/2009

Sensor-Surface: 4mm (Mechanical Surface Detection),

Electronics: DAE4 Sn527, Calibrated: 7/9/2009

Measurement SW: DASY4, V4.7 Build 80

Postprocessing SW: SEMCAD, V1.8 Build 186

**Temperature:** Room T = 21.8 +/- 1 deg C, Liquid T = 22.0 +/- 1 deg C

**CDMA-800 Ch383 LT/Area Scan (111x61x1):** Measurement grid: dx=15mm, dy=15mm

Maximum value of SAR (interpolated) = 0.529 mW/g

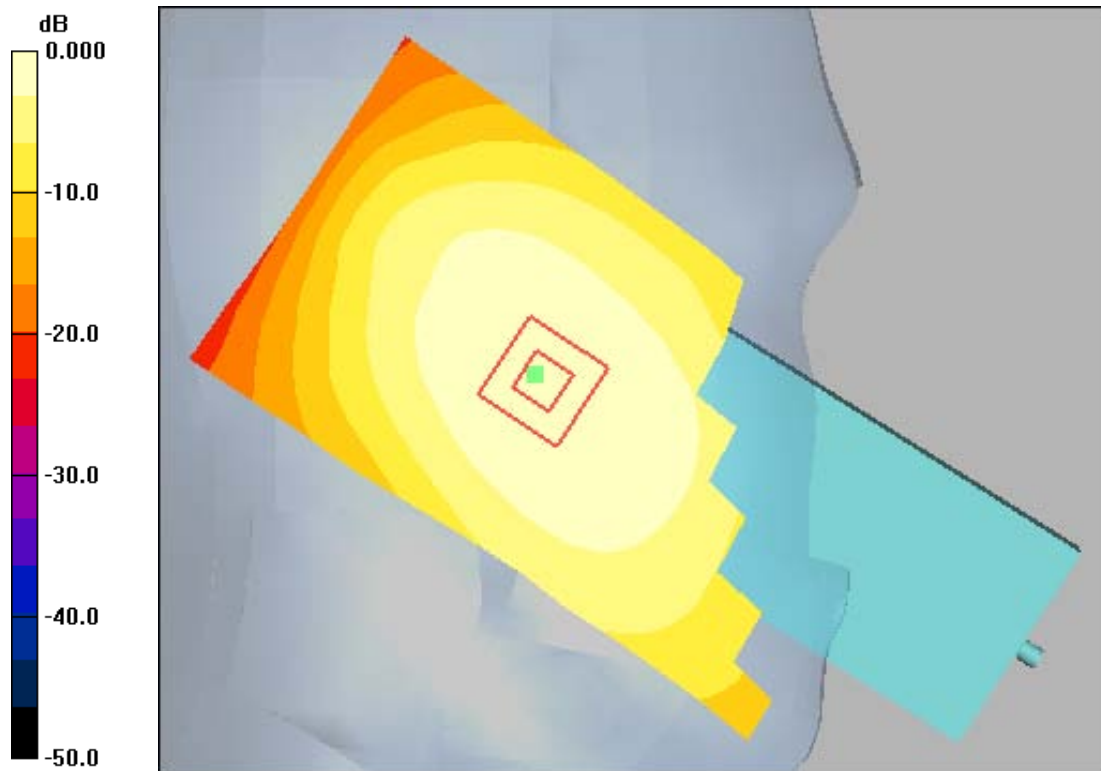
**CDMA-800 Ch383 LT/Zoom Scan (7x7x7)/Cube 0:** Measurement grid: dx=5mm, dy=5mm, dz=5mm

Reference Value = 22.3 V/m; Power Drift = 0.031 dB

Peak SAR (extrapolated) = 0.600 W/kg

**SAR(1 g) = 0.496 mW/g; SAR(10 g) = 0.380 mW/g**

Maximum value of SAR (measured) = 0.526 mW/g



0 dB = 0.529mW/g

Test Laboratory: Comptest/Kyocera

**FCC SCP-3820 CDMA-800 Ch1013, Right Cheek**

Communication System: CDMA-800, Frequency: 824.7 MHz, Duty Cycle: 1:1

Medium: Head 835 MHz, Medium parameters used:  $f = 824.7 \text{ MHz}$ ;  $\sigma = 0.92 \text{ mho/m}$ ;  $\epsilon_r = 42.1$ ;  $\rho = 1000 \text{ kg/m}^3$

Phantom: SAM 12, Phantom section: Right Section

**DASY4 Configuration:**

Probe: ET3DV6 - SN1663, ConvF(6.44, 6.44, 6.44), Calibrated: 9/10/2009

Sensor-Surface: 4mm (Mechanical Surface Detection),

Electronics: DAE4 Sn527, Calibrated: 7/9/2009

Measurement SW: DASY4, V4.7 Build 80

Postprocessing SW: SEMCAD, V1.8 Build 186

**Temperature:** Room T = 21.8 +/- 1 deg C, Liquid T = 22.0 +/- 1 deg C

**CDMA-800 Ch1013 RC/Area Scan (111x61x1):** Measurement grid: dx=15mm, dy=15mm

Maximum value of SAR (interpolated) = 0.811 mW/g

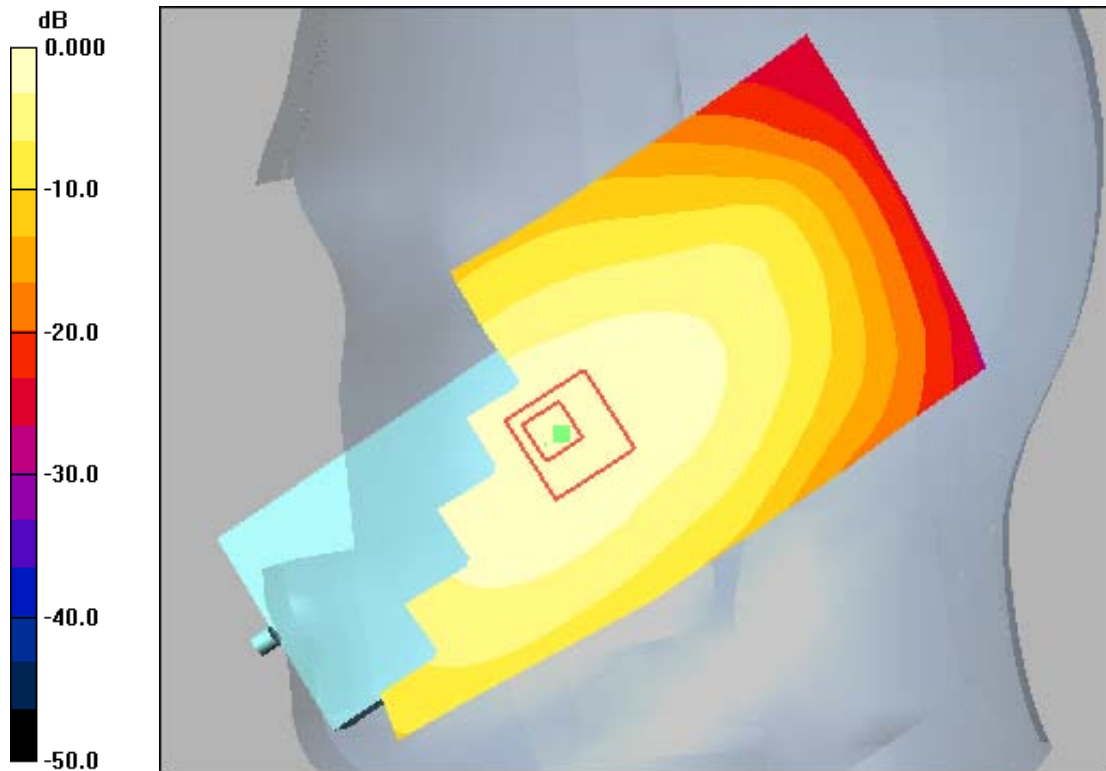
**CDMA-800 Ch1013 RC/Zoom Scan (7x7x7)/Cube 0:** Measurement grid: dx=5mm, dy=5mm, dz=5mm

Reference Value = 28.9 V/m; Power Drift = -0.019 dB

Peak SAR (extrapolated) = 1.28 W/kg

**SAR(1 g) = 0.843 mW/g; SAR(10 g) = 0.568 mW/g**

Maximum value of SAR (measured) = 0.990 mW/g



0 dB = 0.811mW/g

Applicant:	Kyocera
FCC ID:	V65SCP-3820
Report #:	CT-3820-9B1-0610-R0

Date: 6/9/2010

Test Laboratory: Comptest/Kyocera

**FCC SCP-3820 CDMA-800 Ch383, Right Cheek**

Communication System: CDMA-800, Frequency: 836.49 MHz, Duty Cycle: 1:1

Medium: Head 835 MHz, Medium parameters used:  $f = 836.5 \text{ MHz}$ ;  $\sigma = 0.92 \text{ mho/m}$ ;  $\epsilon_r = 42.1$ ;  $\rho = 1000 \text{ kg/m}^3$

Phantom: SAM 12, Phantom section: Right Section

**DASY4 Configuration:**

Probe: ET3DV6 - SN1663, ConvF(6.44, 6.44, 6.44), Calibrated: 9/10/2009

Sensor-Surface: 4mm (Mechanical Surface Detection),

Electronics: DAE4 Sn527, Calibrated: 7/9/2009

Measurement SW: DASY4, V4.7 Build 80

Postprocessing SW: SEMCAD, V1.8 Build 186

**Temperature:** Room T = 21.8 +/- 1 deg C, Liquid T = 22.0 +/- 1 deg C

**CDMA-800 Ch383 RC/Area Scan (111x61x1):** Measurement grid: dx=15mm, dy=15mm

Maximum value of SAR (interpolated) = 0.814 mW/g

**CDMA-800 Ch383 RC/Zoom Scan (7x7x7)/Cube 0:** Measurement grid: dx=5mm, dy=5mm, dz=5mm

Reference Value = 31.8 V/m; Power Drift = -1.07 dB

Peak SAR (extrapolated) = 1.22 W/kg

**SAR(1 g) = 0.783 mW/g; SAR(10 g) = 0.511 mW/g**

Maximum value of SAR (measured) = 0.849 mW/g

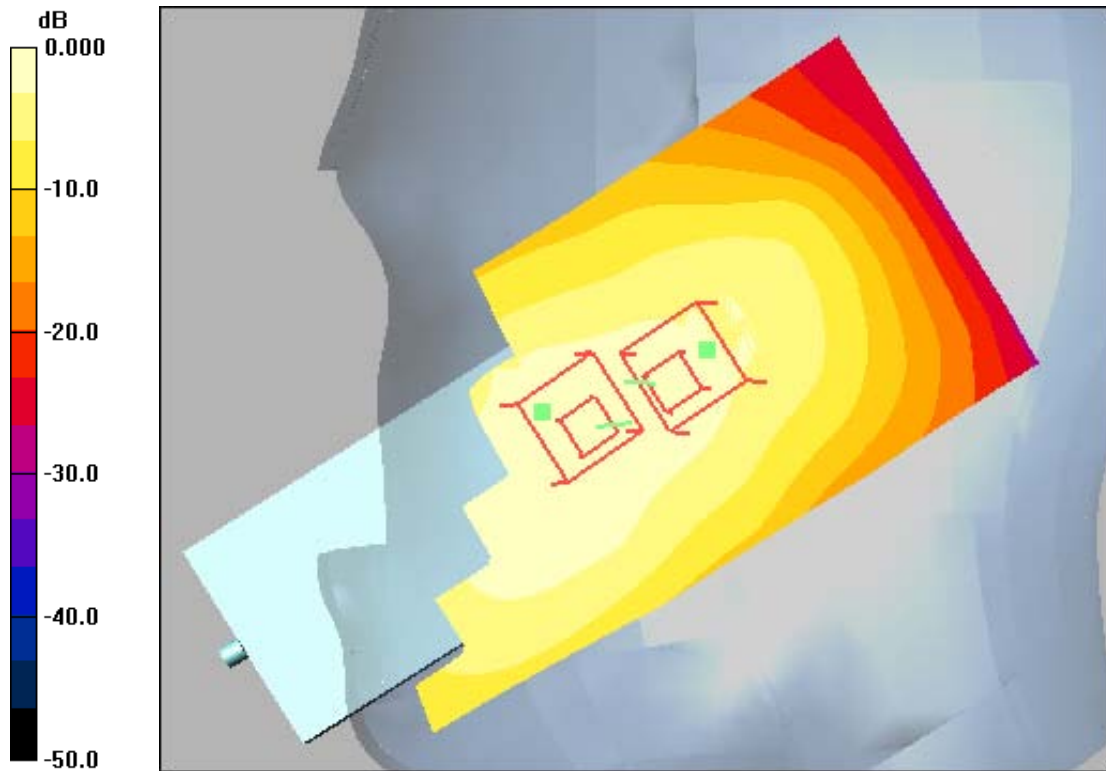
**CDMA-800 Ch383 RC/Zoom Scan (7x7x7)/Cube 1:** Measurement grid: dx=5mm, dy=5mm, dz=5mm

Reference Value = 31.8 V/m; Power Drift = -1.07 dB

Peak SAR (extrapolated) = 0.667 W/kg

**SAR(1 g) = 0.495 mW/g; SAR(10 g) = 0.348 mW/g**

Maximum value of SAR (measured) = 0.567 mW/g



0 dB = 0.814mW/g

Applicant:	Kyocera
FCC ID:	V65SCP-3820
Report #:	CT-3820-9B1-0610-R0

Date: 6/9/2010

Test Laboratory: Comptest/Kyocera

**FCC SCP-3820 CDMA-800 Ch777, Right Cheek**

Communication System: CDMA-800, Frequency: 848.31 MHz, Duty Cycle: 1:1

Medium: Head 835 MHz, Medium parameters used:  $f = 848.5$  MHz;  $\sigma = 0.92$  mho/m;  $\epsilon_r = 42.1$ ;  $\rho = 1000$  kg/m<sup>3</sup>

Phantom: SAM 12, Phantom section: Right Section

**DASY4 Configuration:**

Probe: ET3DV6 - SN1663, ConvF(6.44, 6.44, 6.44), Calibrated: 9/10/2009

Sensor-Surface: 4mm (Mechanical Surface Detection),

Electronics: DAE4 Sn527, Calibrated: 7/9/2009

Measurement SW: DASY4, V4.7 Build 80

Postprocessing SW: SEMCAD, V1.8 Build 186

**Temperature:** Room T = 21.8 +/- 1 deg C, Liquid T = 22.0 +/- 1 deg C

**CDMA-800 Ch777 RC/Area Scan (111x61x1):** Measurement grid: dx=15mm, dy=15mm

Maximum value of SAR (interpolated) = 1.28 mW/g

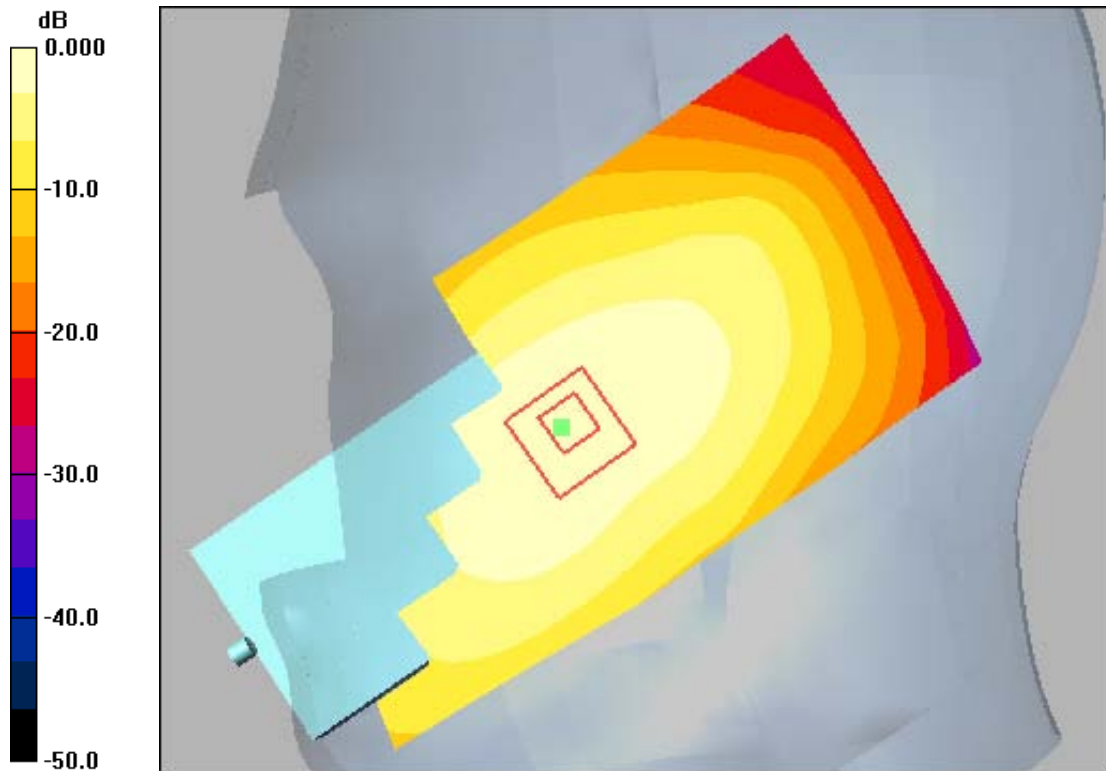
**CDMA-800 Ch777 RC/Zoom Scan (7x7x7)/Cube 0:** Measurement grid: dx=5mm, dy=5mm, dz=5mm

Reference Value = 38.1 V/m; Power Drift = -0.152 dB

Peak SAR (extrapolated) = 2.00 W/kg

**SAR(1 g) = 1.3 mW/g; SAR(10 g) = 0.866 mW/g**

Maximum value of SAR (measured) = 1.41 mW/g



0 dB = 1.28mW/g



Test Laboratory: Comptest/Kyocera

**FCC SCP-3820 CDMA-800 Ch383, Right Tilt**

Communication System: CDMA-800, Frequency: 836.49 MHz, Duty Cycle: 1:1

Medium: Head 835 MHz, Medium parameters used:  $f = 836.5$  MHz;  $\sigma = 0.92$  mho/m;  $\epsilon_r = 42.1$ ;  $\rho = 1000$  kg/m<sup>3</sup>

Phantom: SAM 12, Phantom section: Right Section

**DASY4 Configuration:**

Probe: ET3DV6 - SN1663, ConvF(6.44, 6.44, 6.44), Calibrated: 9/10/2009

Sensor-Surface: 4mm (Mechanical Surface Detection),

Electronics: DAE4 Sn527, Calibrated: 7/9/2009

Measurement SW: DASY4, V4.7 Build 80

Postprocessing SW: SEMCAD, V1.8 Build 186

**Temperature:** Room T = 21.8 +/- 1 deg C, Liquid T = 22.0 +/- 1 deg C

**CDMA-800 Ch383 RT/Area Scan (111x61x1):** Measurement grid: dx=15mm, dy=15mm

Maximum value of SAR (interpolated) = 0.485 mW/g

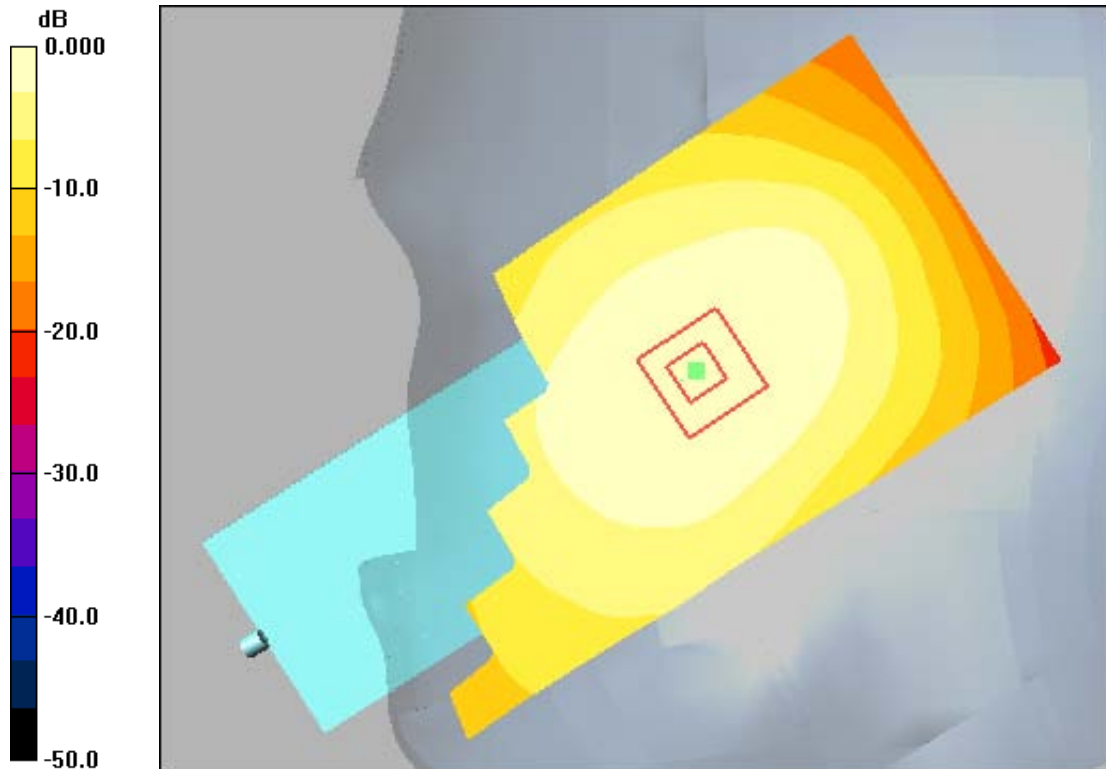
**CDMA-800 Ch383 RT/Zoom Scan (7x7x7)/Cube 0:** Measurement grid: dx=5mm, dy=5mm, dz=5mm

Reference Value = 22.4 V/m; Power Drift = -0.125 dB

Peak SAR (extrapolated) = 0.555 W/kg

**SAR(1 g) = 0.456 mW/g; SAR(10 g) = 0.350 mW/g**

Maximum value of SAR (measured) = 0.481 mW/g



0 dB = 0.485mW/g

Applicant:	Kyocera
FCC ID:	V65SCP-3820
Report #:	CT-3820-9B1-0610-R0

# PCS

Applicant:	Kyocera
FCC ID:	V65SCP-3820
Report #:	CT-3820-9B1-0610-R0

Date: 6/11/2010

Test Laboratory: Comptest/Kyocera

**FCC SCP-3820 CDMA-1900 Ch25, Left Cheek**

Communication System: CDMA-1900, Frequency: 1851.25 MHz, Duty Cycle: 1:1

Medium: HSL1900, Medium parameters used (interpolated):  $f = 1851.25 \text{ MHz}$ ;  $\sigma = 1.38 \text{ mho/m}$ ;  $\epsilon_r = 39.6$ ;  $\rho = 1000 \text{ kg/m}^3$

Phantom: SAM 12, Phantom section: Left Section

**DASY4 Configuration:**

Probe: ES3DV3 - SN3036, ConvF(4.92, 4.92, 4.92), Calibrated: 8/20/2009

Sensor-Surface: 4mm (Mechanical Surface Detection),

Electronics: DAE4 Sn603, Calibrated: 9/15/2009

Measurement SW: DASY4, V4.7 Build 80

Postprocessing SW: SEMCAD, V1.8 Build 186

**Temperature:** Room T = 21.8 +/- 1 deg C, Liquid T = 22.0 +/- 1 deg C

**CDMA-1900 Ch25 LC/Area Scan (111x61x1):** Measurement grid: dx=15mm, dy=15mm

Maximum value of SAR (interpolated) = 0.942 mW/g

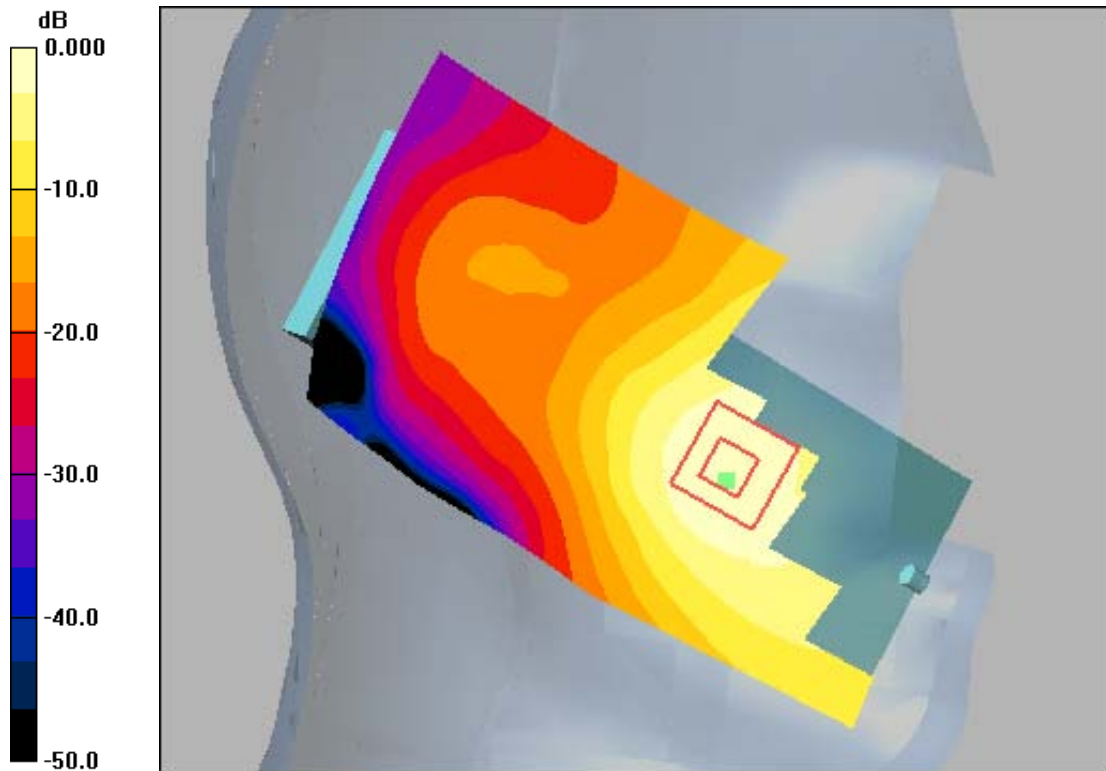
**CDMA-1900 Ch25 LC/Zoom Scan (7x7x7)/Cube 0:** Measurement grid: dx=5mm, dy=5mm, dz=5mm

Reference Value = 8.24 V/m; Power Drift = -0.022 dB

Peak SAR (extrapolated) = 1.16 W/kg

**SAR(1 g) = 0.826 mW/g; SAR(10 g) = 0.531 mW/g**

Maximum value of SAR (measured) = 0.889 mW/g



0 dB = 0.942mW/g

Applicant:	Kyocera
FCC ID:	V65SCP-3820
Report #:	CT-3820-9B1-0610-R0

Date: 6/11/2010

Test Laboratory: Comptest/Kyocera

**FCC SCP-3820 CDMA-1900 Ch600, Left Cheek**

Communication System: CDMA-1900, Frequency: 1880 MHz, Duty Cycle: 1:1  
 Medium: HSL1900, Medium parameters used:  $f = 1880$  MHz;  $\sigma = 1.38$  mho/m;  $\epsilon_r = 39.6$ ;  $\rho = 1000$  kg/m<sup>3</sup>  
 Phantom: SAM 12, Phantom section: Left Section

**DASY4 Configuration:**

Probe: ES3DV3 - SN3036, ConvF(4.92, 4.92, 4.92), Calibrated: 8/20/2009  
 Sensor-Surface: 4mm (Mechanical Surface Detection),  
 Electronics: DAE4 Sn603, Calibrated: 9/15/2009  
 Measurement SW: DASY4, V4.7 Build 80  
 Postprocessing SW: SEMCAD, V1.8 Build 186  
**Temperature:** Room T = 21.8 +/- 1 deg C, Liquid T = 22.0 +/- 1 deg C

**CDMA-1900 Ch600 LC/Area Scan (111x61x1):** Measurement grid: dx=15mm, dy=15mm

Maximum value of SAR (interpolated) = 0.965 mW/g

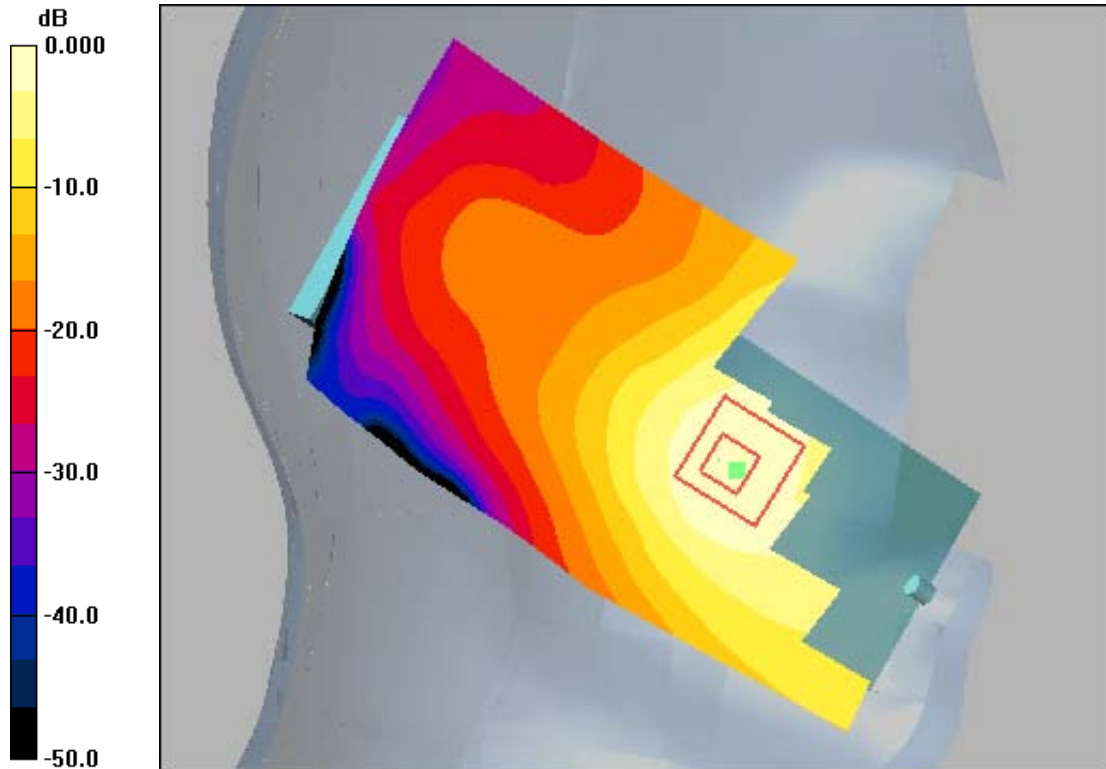
**CDMA-1900 Ch600 LC/Zoom Scan (7x7x7)/Cube 0:** Measurement grid: dx=5mm, dy=5mm, dz=5mm

Reference Value = 8.54 V/m; Power Drift = 0.048 dB

Peak SAR (extrapolated) = 1.28 W/kg

**SAR(1 g) = 0.881 mW/g; SAR(10 g) = 0.557 mW/g**

Maximum value of SAR (measured) = 0.956 mW/g



0 dB = 0.965mW/g

Applicant:	Kyocera
FCC ID:	V65SCP-3820
Report #:	CT-3820-9B1-0610-R0

Date: 6/11/2010

Test Laboratory: Comptest/Kyocera

**FCC SCP-3820 CDMA-1900 Ch1175, Left Cheek**

Communication System: CDMA-1900, Frequency: 1908.75 MHz, Duty Cycle: 1:1

Medium: HSL1900, Medium parameters used (interpolated):  $f = 1908.75 \text{ MHz}$ ;  $\sigma = 1.38 \text{ mho/m}$ ;  $\epsilon_r = 39.6$ ;  $\rho = 1000 \text{ kg/m}^3$

Phantom: SAM 12, Phantom section: Left Section

**DASY4 Configuration:**

Probe: ES3DV3 - SN3036, ConvF(4.92, 4.92, 4.92), Calibrated: 8/20/2009

Sensor-Surface: 4mm (Mechanical Surface Detection),

Electronics: DAE4 Sn603, Calibrated: 9/15/2009

Measurement SW: DASY4, V4.7 Build 80

Postprocessing SW: SEMCAD, V1.8 Build 186

**Temperature:** Room T = 21.8 +/- 1 deg C, Liquid T = 22.0 +/- 1 deg C

**CDMA-1900 Ch1175 LC/Area Scan (131x81x1):** Measurement grid: dx=15mm, dy=15mm

Maximum value of SAR (interpolated) = 1.03 mW/g

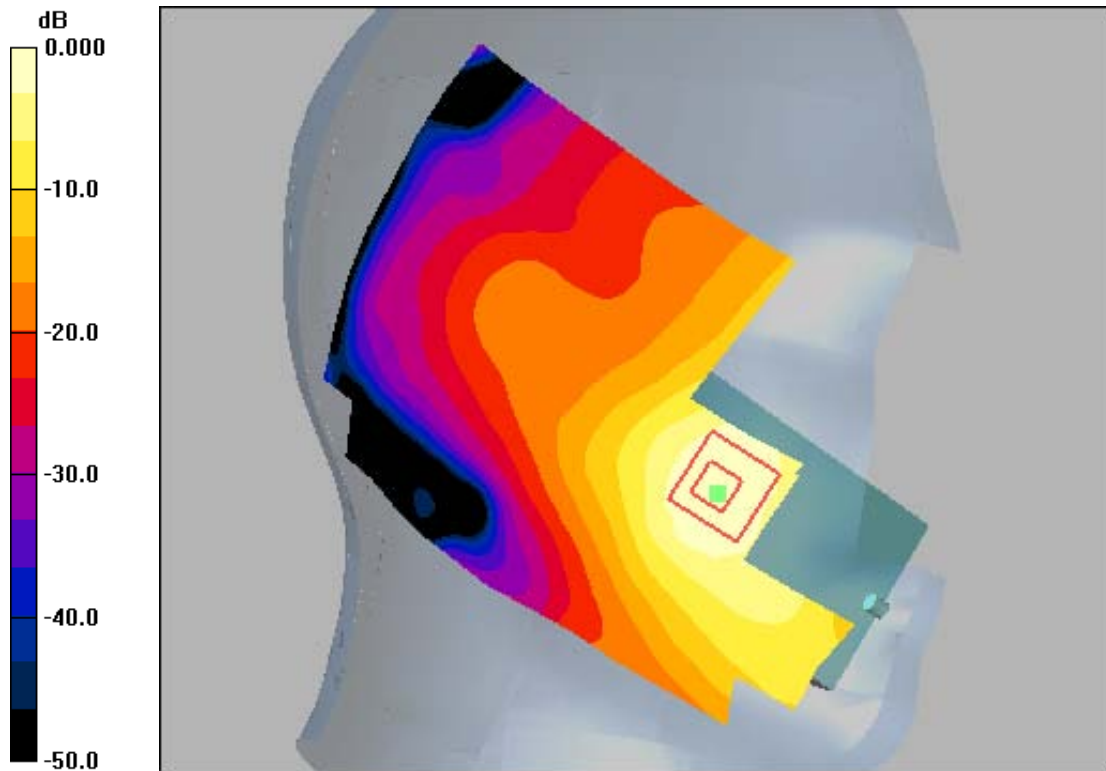
**CDMA-1900 Ch1175 LC/Zoom Scan (7x7x7)/Cube 0:** Measurement grid: dx=5mm, dy=5mm, dz=5mm

Reference Value = 8.65 V/m; Power Drift = -0.063 dB

Peak SAR (extrapolated) = 1.21 W/kg

**SAR(1 g) = 0.808 mW/g; SAR(10 g) = 0.504 mW/g**

Maximum value of SAR (measured) = 0.880 mW/g



0 dB = 1.03mW/g

Applicant:	Kyocera
FCC ID:	V65SCP-3820
Report #:	CT-3820-9B1-0610-R0

Date: 6/11/2010

Test Laboratory: Comptest/Kyocera

**FCC SCP-3820 CDMA-1900 Ch600, Left Tilt**

Communication System: CDMA-1900, Frequency: 1880 MHz, Duty Cycle: 1:1

Medium: HSL1900, Medium parameters used:  $f = 1880$  MHz;  $\sigma = 1.38$  mho/m;  $\epsilon_r = 39.6$ ;  $\rho = 1000$  kg/m<sup>3</sup>

Phantom: SAM 12, Phantom section: Left Section

**DASY4 Configuration:**

Probe: ES3DV3 - SN3036, ConvF(4.92, 4.92, 4.92), Calibrated: 8/20/2009

Sensor-Surface: 4mm (Mechanical Surface Detection),

Electronics: DAE4 Sn603, Calibrated: 9/15/2009

Measurement SW: DASY4, V4.7 Build 80

Postprocessing SW: SEMCAD, V1.8 Build 186

**Temperature:** Room T = 21.8 +/- 1 deg C, Liquid T = 22.0 +/- 1 deg C

**CDMA-1900 Ch600 LT/Area Scan (111x61x1):** Measurement grid: dx=15mm, dy=15mm

Maximum value of SAR (interpolated) = 0.105 mW/g

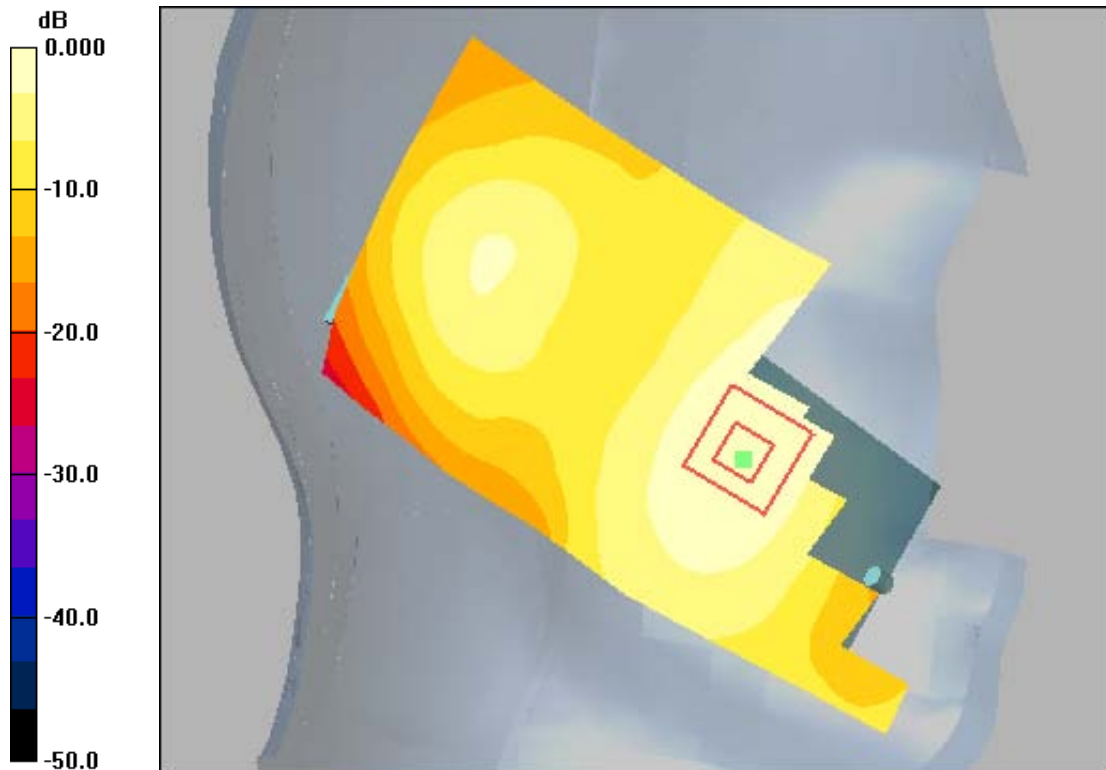
**CDMA-1900 Ch600 LT/Zoom Scan (7x7x7)/Cube 0:** Measurement grid: dx=5mm, dy=5mm, dz=5mm

Reference Value = 5.22 V/m; Power Drift = -0.794 dB

Peak SAR (extrapolated) = 0.135 W/kg

**SAR(1 g) = 0.094 mW/g; SAR(10 g) = 0.060 mW/g**

Maximum value of SAR (measured) = 0.101 mW/g



0 dB = 0.105mW/g

Applicant:	Kyocera
FCC ID:	V65SCP-3820
Report #:	CT-3820-9B1-0610-R0

Date: 6/11/2010

Test Laboratory: Comptest/Kyocera

**FCC SCP-3820 CDMA-1900 Ch25, Right Cheek**

Communication System: CDMA-1900, Frequency: 1851.25 MHz, Duty Cycle: 1:1

Medium: HSL1900, Medium parameters used (interpolated):  $f = 1851.25$  MHz;  $\sigma = 1.38$  mho/m;  $\epsilon_r = 39.6$ ;  $\rho = 1000$  kg/m<sup>3</sup>

Phantom: SAM 12, Phantom section: Right Section

**DASY4 Configuration:**

Probe: ES3DV3 - SN3036, ConvF(4.92, 4.92, 4.92), Calibrated: 8/20/2009

Sensor-Surface: 4mm (Mechanical Surface Detection),

Electronics: DAE4 Sn603, Calibrated: 9/15/2009

Measurement SW: DASY4, V4.7 Build 80

Postprocessing SW: SEMCAD, V1.8 Build 186

**Temperature:** Room T = 21.8 +/- 1 deg C, Liquid T = 22.0 +/- 1 deg C

**CDMA-1900 Ch25 RC/Area Scan (111x61x1):** Measurement grid: dx=15mm, dy=15mm

Maximum value of SAR (interpolated) = 0.841 mW/g

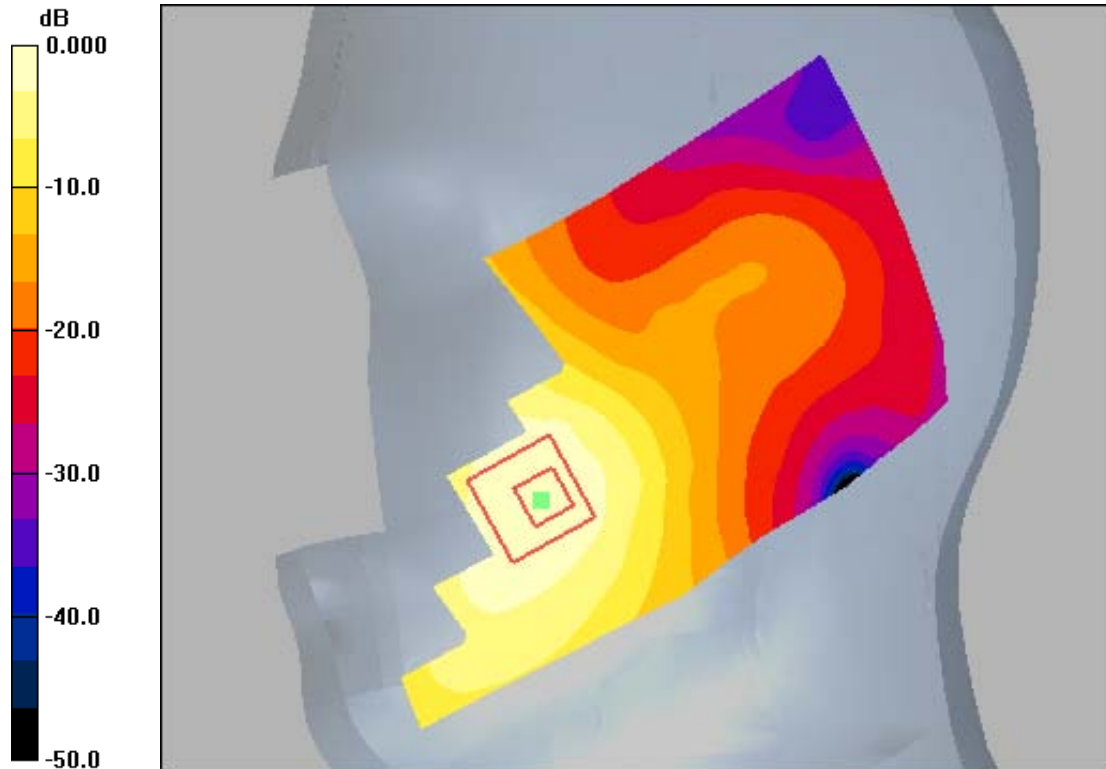
**CDMA-1900 Ch25 RC/Zoom Scan (7x7x7)/Cube 0:** Measurement grid: dx=5mm, dy=5mm, dz=5mm

Reference Value = 15.1 V/m; Power Drift = -0.092 dB

Peak SAR (extrapolated) = 0.957 W/kg

**SAR(1 g) = 0.696 mW/g; SAR(10 g) = 0.457 mW/g**

Maximum value of SAR (measured) = 0.747 mW/g



0 dB = 0.841mW/g

Applicant:	Kyocera
FCC ID:	V65SCP-3820
Report #:	CT-3820-9B1-0610-R0

Date: 6/11/2010

Test Laboratory: Comptest/Kyocera

**FCC SCP-3820 CDMA-1900 Ch600, Right Cheek**

Communication System: CDMA-1900, Frequency: 1880 MHz, Duty Cycle: 1:1

Medium: HSL1900, Medium parameters used:  $f = 1880$  MHz;  $\sigma = 1.38$  mho/m;  $\epsilon_r = 39.6$ ;  $\rho = 1000$  kg/m<sup>3</sup>

Phantom: SAM 12, Phantom section: Right Section

**DASY4 Configuration:**

Probe: ES3DV3 - SN3036, ConvF(4.92, 4.92, 4.92), Calibrated: 8/20/2009

Sensor-Surface: 4mm (Mechanical Surface Detection),

Electronics: DAE4 Sn603, Calibrated: 9/15/2009

Measurement SW: DASY4, V4.7 Build 80

Postprocessing SW: SEMCAD, V1.8 Build 186

**Temperature:** Room T = 21.8 +/- 1 deg C, Liquid T = 22.0 +/- 1 deg C

**CDMA-1900 Ch600 RC/Area Scan (111x61x1):** Measurement grid: dx=15mm, dy=15mm

Maximum value of SAR (interpolated) = 0.965 mW/g

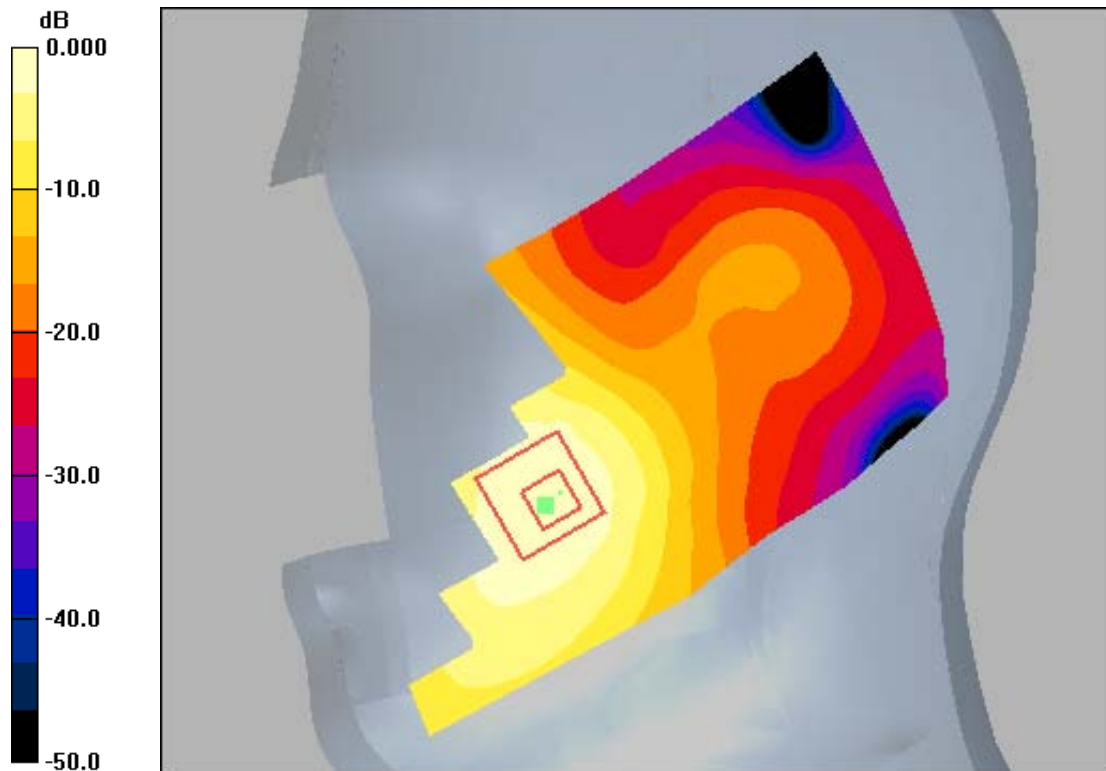
**CDMA-1900 Ch600 RC/Zoom Scan (7x7x7)/Cube 0:** Measurement grid: dx=5mm, dy=5mm, dz=5mm

Reference Value = 15.3 V/m; Power Drift = -0.038 dB

Peak SAR (extrapolated) = 1.13 W/kg

**SAR(1 g) = 0.810 mW/g; SAR(10 g) = 0.520 mW/g**

Maximum value of SAR (measured) = 0.869 mW/g



0 dB = 0.965mW/g



Test Laboratory: Comptest/Kyocera

**FCC SCP-3820 CDMA-1900 Ch1175, Right Cheek**

Communication System: CDMA-1900, Frequency: 1908.75 MHz, Duty Cycle: 1:1

Medium: HSL1900, Medium parameters used (interpolated):  $f = 1908.75$  MHz;  $\sigma = 1.38$  mho/m;  $\epsilon_r = 39.6$ ;  $\rho = 1000$  kg/m<sup>3</sup>

Phantom: SAM 12, Phantom section: Right Section

**DASY4 Configuration:**

Probe: ES3DV3 - SN3036, ConvF(4.92, 4.92, 4.92), Calibrated: 8/20/2009

Sensor-Surface: 4mm (Mechanical Surface Detection),

Electronics: DAE4 Sn603, Calibrated: 9/15/2009

Measurement SW: DASY4, V4.7 Build 80

Postprocessing SW: SEMCAD, V1.8 Build 186

**Temperature:** Room T = 21.8 +/- 1 deg C, Liquid T = 22.0 +/- 1 deg C

**CDMA-1900 Ch1175 RC/Area Scan (111x61x1):** Measurement grid: dx=15mm, dy=15mm

Maximum value of SAR (interpolated) = 0.986 mW/g

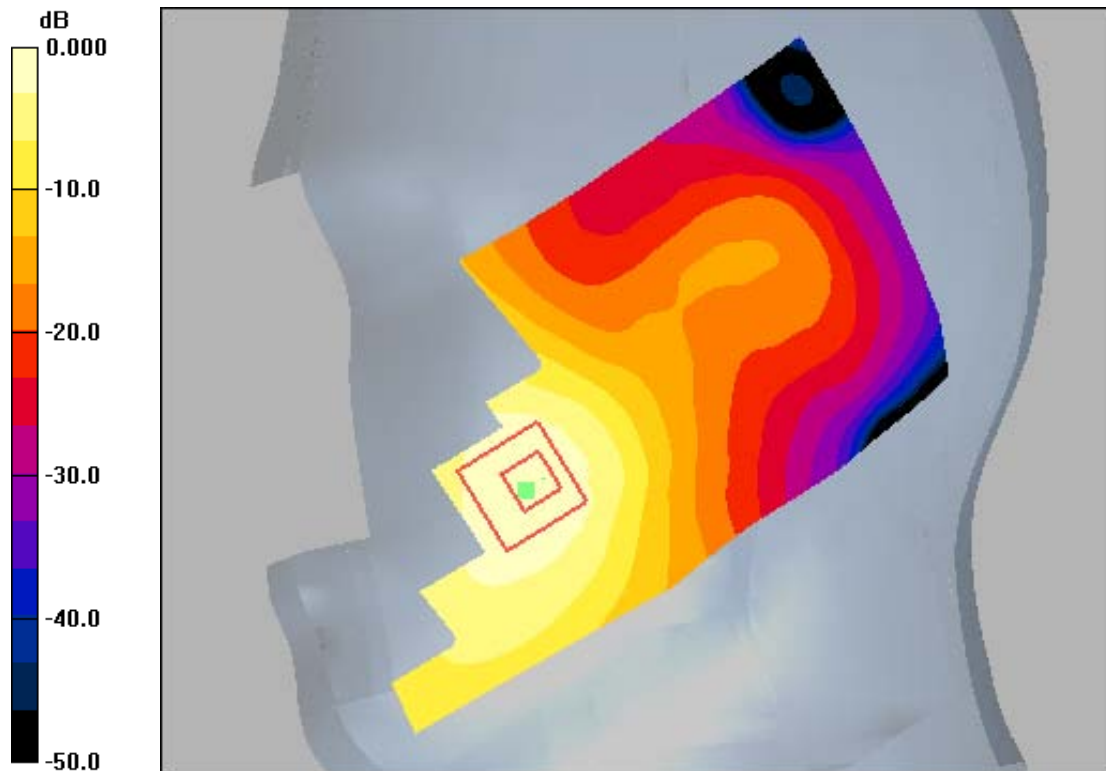
**CDMA-1900 Ch1175 RC/Zoom Scan (7x7x7)/Cube 0:** Measurement grid: dx=5mm, dy=5mm, dz=5mm

Reference Value = 14.0 V/m; Power Drift = -0.149 dB

Peak SAR (extrapolated) = 1.16 W/kg

**SAR(1 g) = 0.810 mW/g; SAR(10 g) = 0.509 mW/g**

Maximum value of SAR (measured) = 0.884 mW/g



0 dB = 0.986mW/g

Test Laboratory: Comptest/Kyocera

**FCC SCP-3820 CDMA-1900 Ch600, Right Tilt**

Communication System: CDMA-1900, Frequency: 1880 MHz, Duty Cycle: 1:1  
 Medium: HSL1900, Medium parameters used:  $f = 1880$  MHz;  $\sigma = 1.38$  mho/m;  $\epsilon_r = 39.6$ ;  $\rho = 1000$  kg/m<sup>3</sup>  
 Phantom: SAM 12, Phantom section: Right Section

**DASY4 Configuration:**

Probe: ES3DV3 - SN3036, ConvF(4.92, 4.92, 4.92), Calibrated: 8/20/2009  
 Sensor-Surface: 4mm (Mechanical Surface Detection),  
 Electronics: DAE4 Sn603, Calibrated: 9/15/2009  
 Measurement SW: DASY4, V4.7 Build 80  
 Postprocessing SW: SEMCAD, V1.8 Build 186  
**Temperature:** Room T = 21.8 +/- 1 deg C, Liquid T = 22.0 +/- 1 deg C

**CDMA-1900 Ch600 RT/Area Scan (111x61x1):** Measurement grid: dx=15mm, dy=15mm

Maximum value of SAR (interpolated) = 0.140 mW/g

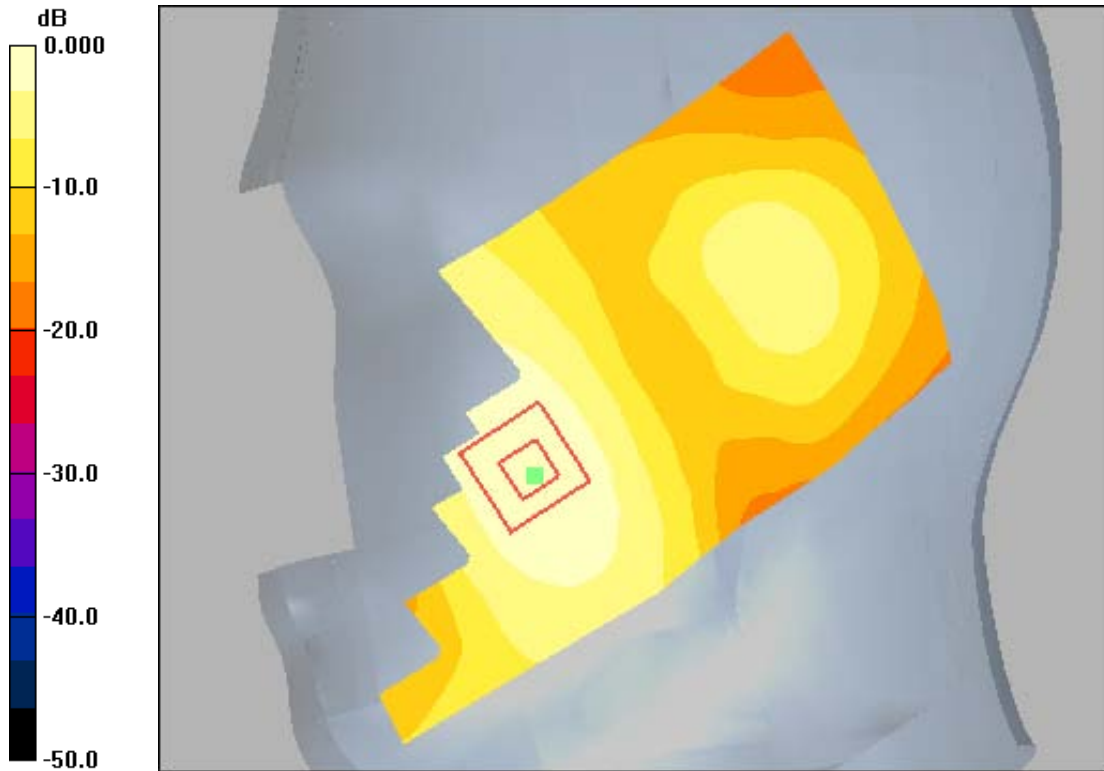
**CDMA-1900 Ch600 RT/Zoom Scan (7x7x7)/Cube 0:** Measurement grid: dx=5mm, dy=5mm, dz=5mm

Reference Value = 2.94 V/m; Power Drift = 0.175 dB

Peak SAR (extrapolated) = 0.180 W/kg

**SAR(1 g) = 0.125 mW/g; SAR(10 g) = 0.081 mW/g**

Maximum value of SAR (measured) = 0.135 mW/g



0 dB = 0.140mW/g