

Applicant:	Kyocera
FCC ID:	V65M9300
Report #:	CT-M9300-9B1-1210-R1

**EXHIBIT 9 APPENDIX B1: SAR DISTRIBUTION PLOTS (HEAD)**

**CELL**

Applicant:	Kyocera
FCC ID:	V65M9300
Report #:	CT-M9300-9B1-1210-R1

Test Laboratory: Comptest/Kyocera

Date: 12/6/2010

**FCC M9300 CELL Closed Left Ch383 LC**

Communication System: CDMA-800, Frequency: 836.49 MHz, Duty Cycle: 1:1

Medium: Head 835 MHz, Medium parameters used:  $f = 836.5$  MHz;  $\sigma = 0.91$  mho/m;  $\epsilon_r = 40.7$ ;  $\rho = 1000$  kg/m<sup>3</sup>

Phantom: SAM 12, Phantom section: Left Section

**DASY4 Configuration:**

Probe: ET3DV6 - SN1618, ConvF(6.52, 6.52, 6.52), Calibrated: 8/11/2010

Sensor-Surface: 4mm (Mechanical Surface Detection),

Electronics: DAE4 Sn530, Calibrated: 4/23/2010

Measurement SW: DASY4, V4.7 Build 80

Postprocessing SW: SEMCAD, V1.8 Build 186

**Temperature:** Room T = 21.8̄ 1 deg C, Liquid T = 22.0̄ 1 deg C

**CDMA-800 Ch383 LC/Area Scan (111x61x1):** Measurement grid: dx=15mm, dy=15mm

Maximum value of SAR (interpolated) = 0.540 mW/g

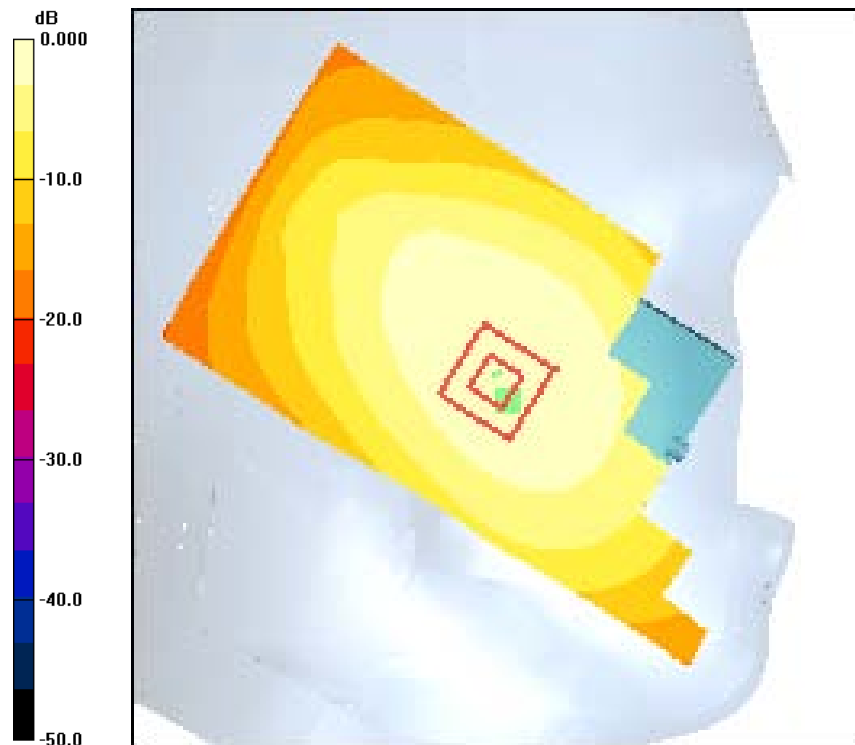
**CDMA-800 Ch383 LC/Zoom Scan (7x7x7)/Cube 0:** Measurement grid: dx=5mm, dy=5mm, dz=5mm

Reference Value = 15.8 V/m; Power Drift = 0.037 dB

Peak SAR (extrapolated) = 0.687 W/kg

**SAR(1 g) = 0.495 mW/g; SAR(10 g) = 0.357 mW/g**

Maximum value of SAR (measured) = 0.529 mW/g



0 dB = 0.529mW/g

Applicant:	Kyocera
FCC ID:	V65M9300
Report #:	CT-M9300-9B1-1210-R1

Test Laboratory: Comptest/Kyocera

Date: 12/6/2010

**FCC M9300 CELL Closed Left Ch383 LT**

Communication System: CDMA-800, Frequency: 836.49 MHz, Duty Cycle: 1:1

Medium: Head 835 MHz, Medium parameters used:  $f = 836.5$  MHz;  $\sigma = 0.91$  mho/m;  $\epsilon_r = 40.7$ ;  $\rho = 1000$  kg/m<sup>3</sup>

Phantom: SAM 12, Phantom section: Left Section

**DASY4 Configuration:**

Probe: ET3DV6 - SN1618, ConvF(6.52, 6.52, 6.52), Calibrated: 8/11/2010

Sensor-Surface: 4mm (Mechanical Surface Detection),

Electronics: DAE4 Sn530, Calibrated: 4/23/2010

Measurement SW: DASY4, V4.7 Build 80

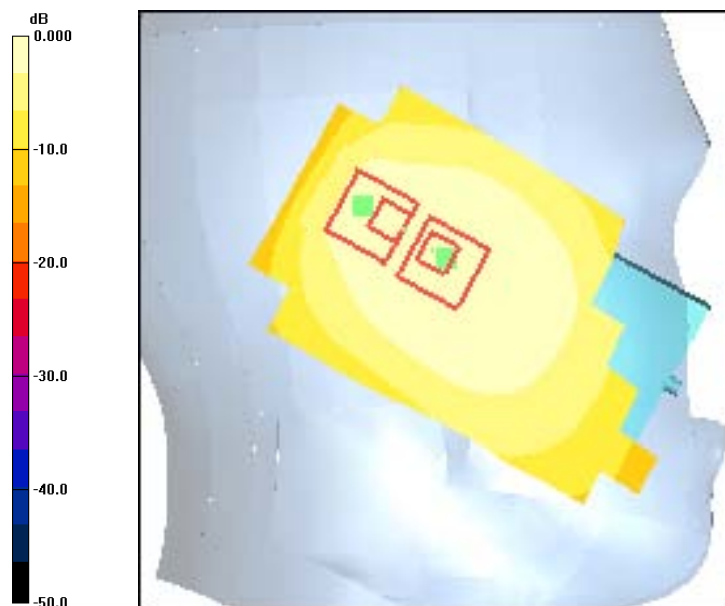
Postprocessing SW: SEMCAD, V1.8 Build 186

**Temperature:** Room T = 21.8̄ 1 deg C, Liquid T = 22.0̄ 1 deg C

**CDMA-800 Ch383 LT/Area Scan (111x61x1):** Measurement grid: dx=15mm, dy=15mm  
Maximum value of SAR (interpolated) = 0.315 mW/g

**CDMA-800 Ch383 LT/Zoom Scan (7x7x7)/Cube 0:** Measurement grid: dx=5mm, dy=5mm, dz=5mm  
Reference Value = 8.62 V/m; Power Drift = -0.032 dB  
Peak SAR (extrapolated) = 0.387 W/kg  
**SAR(1 g) = 0.305 mW/g; SAR(10 g) = 0.227 mW/g**  
Maximum value of SAR (measured) = 0.324 mW/g

**CDMA-800 Ch383 LT/Zoom Scan (7x7x7)/Cube 1:** Measurement grid: dx=5mm, dy=5mm, dz=5mm  
Reference Value = 8.62 V/m; Power Drift = -0.032 dB  
Peak SAR (extrapolated) = 0.321 W/kg  
**SAR(1 g) = 0.227 mW/g; SAR(10 g) = 0.142 mW/g**  
Maximum value of SAR (measured) = 0.274 mW/g



0 dB = 0.274mW/g

Applicant:	Kyocera
FCC ID:	V65M9300
Report #:	CT-M9300-9B1-1210-R1

Test Laboratory: Comptest/Kyocera

Date: 12/6/2010

**FCC M9300 CELL Closed Right Ch383 RC**

Communication System: CDMA-800, Frequency: 836.49 MHz, Duty Cycle: 1:1

Medium: Head 835 MHz, Medium parameters used:  $f = 836.5$  MHz;  $\sigma = 0.91$  mho/m;  $\epsilon_r = 40.7$ ;  $\rho = 1000$  kg/m<sup>3</sup>

Phantom: SAM 12, Phantom section: Right Section

**DASY4 Configuration:**

Probe: ET3DV6 - SN1618, ConvF(6.52, 6.52, 6.52), Calibrated: 8/11/2010

Sensor-Surface: 4mm (Mechanical Surface Detection),

Electronics: DAE4 Sn530, Calibrated: 4/23/2010

Measurement SW: DASY4, V4.7 Build 80

Postprocessing SW: SEMCAD, V1.8 Build 186

**Temperature:** Room T = 21.8̄ 1 deg C, Liquid T = 22.0̄ 1 deg C

**CDMA-800 Ch383 RC/Area Scan (111x61x1):** Measurement grid: dx=15mm, dy=15mm

Maximum value of SAR (interpolated) = 0.466 mW/g

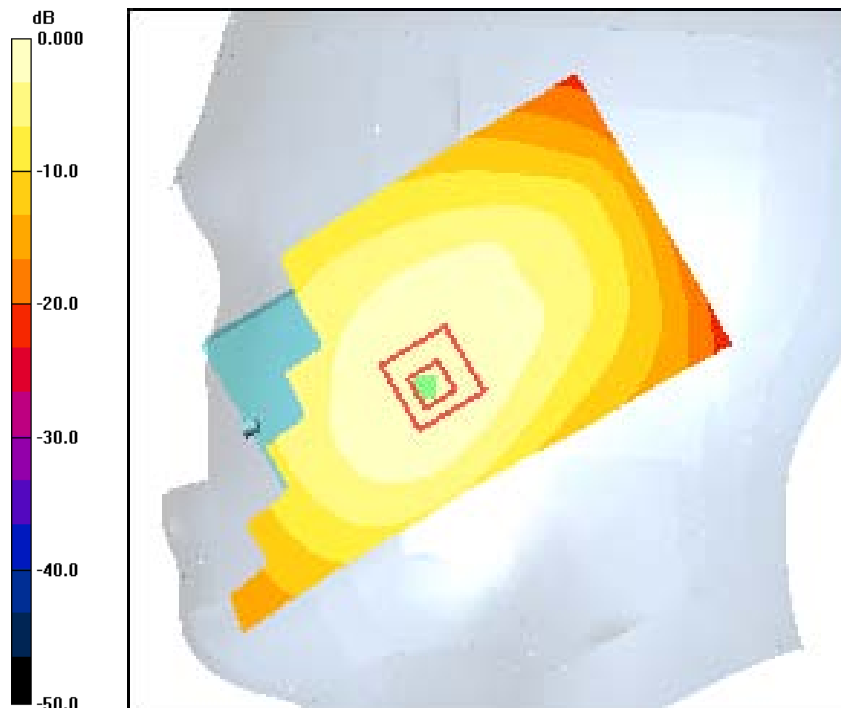
**CDMA-800 Ch383 RC/Zoom Scan (7x7x7)/Cube 0:** Measurement grid: dx=5mm, dy=5mm, dz=5mm

Reference Value = 11.4 V/m; Power Drift = -0.027 dB

Peak SAR (extrapolated) = 0.575 W/kg

**SAR(1 g) = 0.442 mW/g; SAR(10 g) = 0.325 mW/g**

Maximum value of SAR (measured) = 0.470 mW/g



0 dB = 0.470mW/g

Applicant:	Kyocera
FCC ID:	V65M9300
Report #:	CT-M9300-9B1-1210-R1

Test Laboratory: Comptest/Kyocera

Date: 12/6/2010

**FCC M9300 CELL Closed Right Ch383 RT**

Communication System: CDMA-800, Frequency: 836.49 MHz, Duty Cycle: 1:1

Medium: Head 835 MHz, Medium parameters used:  $f = 836.5 \text{ MHz}$ ;  $\sigma = 0.91 \text{ mho/m}$ ;  $\epsilon_r = 40.7$ ;  $\rho = 1000 \text{ kg/m}^3$

Phantom: SAM 12, Phantom section: Right Section

**DASY4 Configuration:**

Probe: ET3DV6 - SN1618, ConvF(6.52, 6.52, 6.52), Calibrated: 8/11/2010

Sensor-Surface: 4mm (Mechanical Surface Detection),

Electronics: DAE4 Sn530, Calibrated: 4/23/2010

Measurement SW: DASY4, V4.7 Build 80

Postprocessing SW: SEMCAD, V1.8 Build 186

**Temperature:** Room T =  $21.8 \pm 1 \text{ deg C}$ , Liquid T =  $22.0 \pm 1 \text{ deg C}$

**CDMA-800 Ch383 RT/Area Scan (11x61x1):** Measurement grid:  $dx=15\text{mm}$ ,  $dy=15\text{mm}$   
Maximum value of SAR (interpolated) = 0.333 mW/g

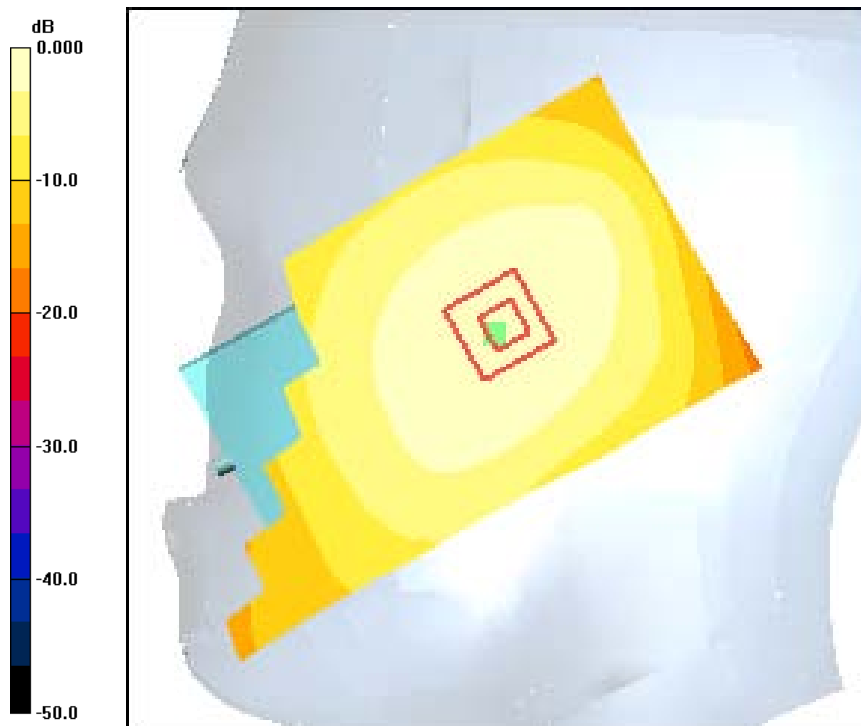
**CDMA-800 Ch383 RT/Zoom Scan (7x7x7)/Cube 0:** Measurement grid:  $dx=5\text{mm}$ ,  $dy=5\text{mm}$ ,  $dz=5\text{mm}$

Reference Value = 16.0 V/m; Power Drift = 0.086 dB

Peak SAR (extrapolated) = 0.405 W/kg

**SAR(1 g) = 0.326 mW/g; SAR(10 g) = 0.245 mW/g**

Maximum value of SAR (measured) = 0.343 mW/g



0 dB = 0.343mW/g

Applicant:	Kyocera
FCC ID:	V65M9300
Report #:	CT-M9300-9B1-1210-R1

Test Laboratory: Comptest/Kyocera

Date: 12/13/2010

**FCC M9300 CELL Open Left Ch383 LC**

Communication System: CDMA-800, Frequency: 836.49 MHz, Duty Cycle: 1:1

Medium: Head 835 MHz, Medium parameters used:  $f = 836.5 \text{ MHz}$ ;  $\sigma = 0.9 \text{ mho/m}$ ;  $\epsilon_r = 40.5$ ;  $\rho = 1000 \text{ kg/m}^3$

Phantom: SAM 12, Phantom section: Left Section

**DASY4 Configuration:**

Probe: ET3DV6 - SN1618, ConvF(6.52, 6.52, 6.52), Calibrated: 8/11/2010

Sensor-Surface: 4mm (Mechanical Surface Detection),

Electronics: DAE4 Sn530, Calibrated: 4/23/2010

Measurement SW: DASY4, V4.7 Build 80

Postprocessing SW: SEMCAD, V1.8 Build 186

**Temperature:** Room T =  $21.8 \pm 1 \text{ deg C}$ , Liquid T =  $22.0 \pm 1 \text{ deg C}$

**CDMA-800 Ch383 LC/Area Scan (101x121x1):** Measurement grid:  $dx=15\text{mm}$ ,  $dy=15\text{mm}$   
Maximum value of SAR (interpolated) = 0.696 mW/g

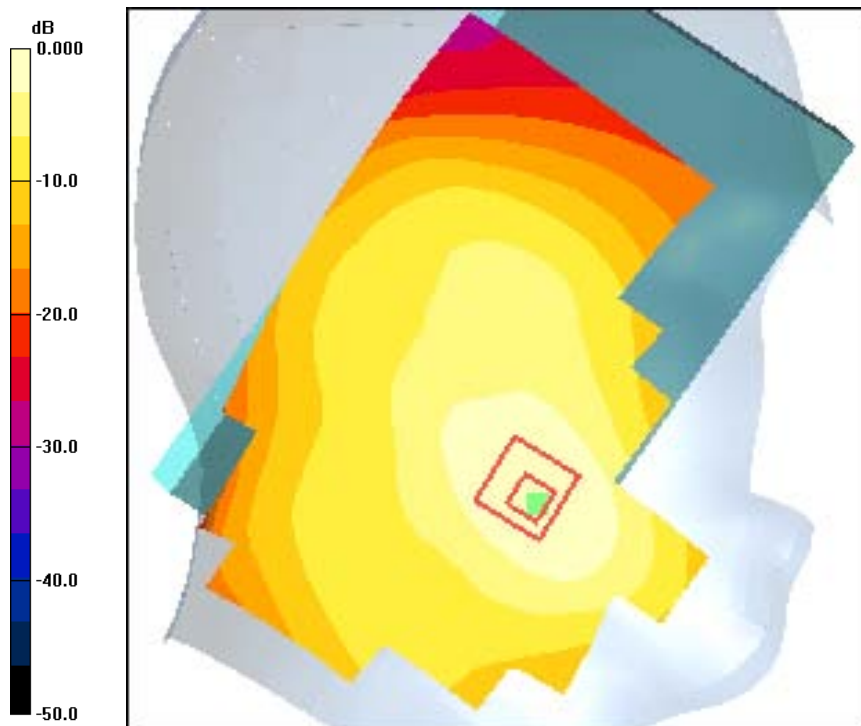
**CDMA-800 Ch383 LC/Zoom Scan (7x7x7)/Cube 0:** Measurement grid:  $dx=5\text{mm}$ ,  $dy=5\text{mm}$ ,  $dz=5\text{mm}$

Reference Value = 7.91 V/m; Power Drift = -0.115 dB

Peak SAR (extrapolated) = 0.866 W/kg

**SAR(1 g) = 0.646 mW/g; SAR(10 g) = 0.452 mW/g**

Maximum value of SAR (measured) = 0.687 mW/g



0 dB = 0.687mW/g

Applicant:	Kyocera
FCC ID:	V65M9300
Report #:	CT-M9300-9B1-1210-R1

Test Laboratory: Comptest/Kyocera

Date: 12/13/2010

**FCC M9300 CELL Open Left Ch383 LT**

Communication System: CDMA-800, Frequency: 836.49 MHz, Duty Cycle: 1:1

Medium: Head 835 MHz, Medium parameters used:  $f = 836.5$  MHz;  $\sigma = 0.9$  mho/m;  $\epsilon_r = 40.5$ ;  $\rho = 1000$  kg/m<sup>3</sup>

Phantom: SAM 12, Phantom section: Left Section

**DASY4 Configuration:**

Probe: ET3DV6 - SN1618, ConvF(6.52, 6.52, 6.52), Calibrated: 8/11/2010

Sensor-Surface: 4mm (Mechanical Surface Detection),

Electronics: DAE4 Sn530, Calibrated: 4/23/2010

Measurement SW: DASY4, V4.7 Build 80

Postprocessing SW: SEMCAD, V1.8 Build 186

**Temperature:** Room T = 21.8̄ 1 deg C, Liquid T = 22.0̄ 1 deg C

**CDMA-800 Ch383 LT/Area Scan (101x121x1):** Measurement grid: dx=15mm, dy=15mm

Maximum value of SAR (interpolated) = 0.270 mW/g

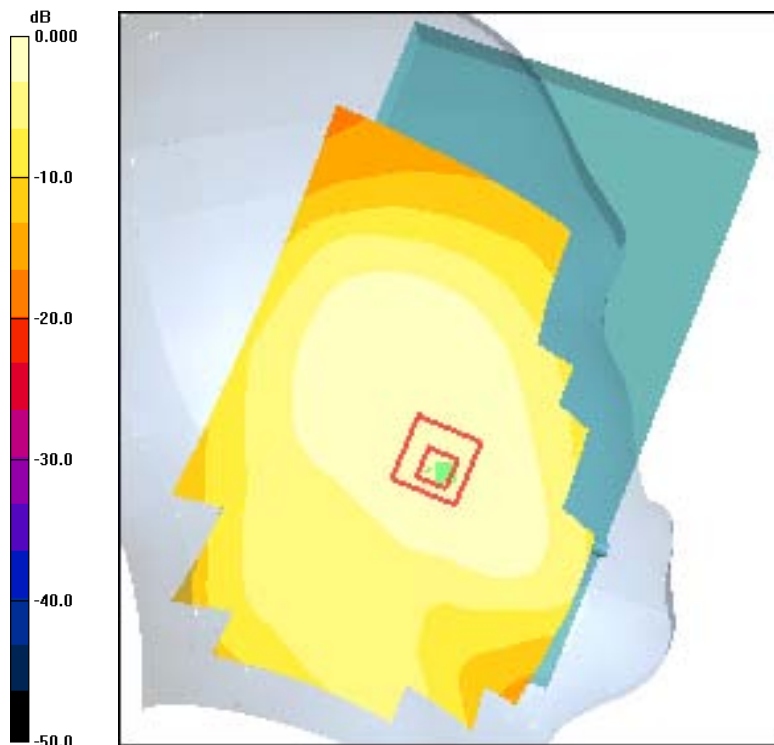
**CDMA-800 Ch383 LT/Zoom Scan (7x7x7)/Cube 0:** Measurement grid: dx=5mm, dy=5mm, dz=5mm

Reference Value = 7.84 V/m; Power Drift = 0.080 dB

Peak SAR (extrapolated) = 0.305 W/kg

**SAR(1 g) = 0.256 mW/g; SAR(10 g) = 0.200 mW/g**

Maximum value of SAR (measured) = 0.271 mW/g



0 dB = 0.271mW/g



Applicant:	Kyocera
FCC ID:	V65M9300
Report #:	CT-M9300-9B1-1210-R1

Test Laboratory: Comptest/Kyocera

Date: 12/13/2010

**FCC M9300 CELL Open Right Ch383 RC**

Communication System: CDMA-800, Frequency: 836.49 MHz, Duty Cycle: 1:1

Medium: Head 835 MHz, Medium parameters used:  $f = 836.5$  MHz;  $\sigma = 0.9$  mho/m;  $\epsilon_r = 40.5$ ;  $\rho = 1000$  kg/m<sup>3</sup>

Phantom: SAM 12, Phantom section: Right Section

**DASY4 Configuration:**

Probe: ET3DV6 - SN1618, ConvF(6.52, 6.52, 6.52), Calibrated: 8/11/2010

Sensor-Surface: 4mm (Mechanical Surface Detection),

Electronics: DAE4 Sn530, Calibrated: 4/23/2010

Measurement SW: DASY4, V4.7 Build 80

Postprocessing SW: SEMCAD, V1.8 Build 186

**Temperature:** Room T = 21.8̄ 1 deg C, Liquid T = 22.0̄ 1 deg C

**CDMA-800 Ch383 RC/Area Scan (101x121x1):** Measurement grid: dx=15mm, dy=15mm

Maximum value of SAR (interpolated) = 0.310 mW/g

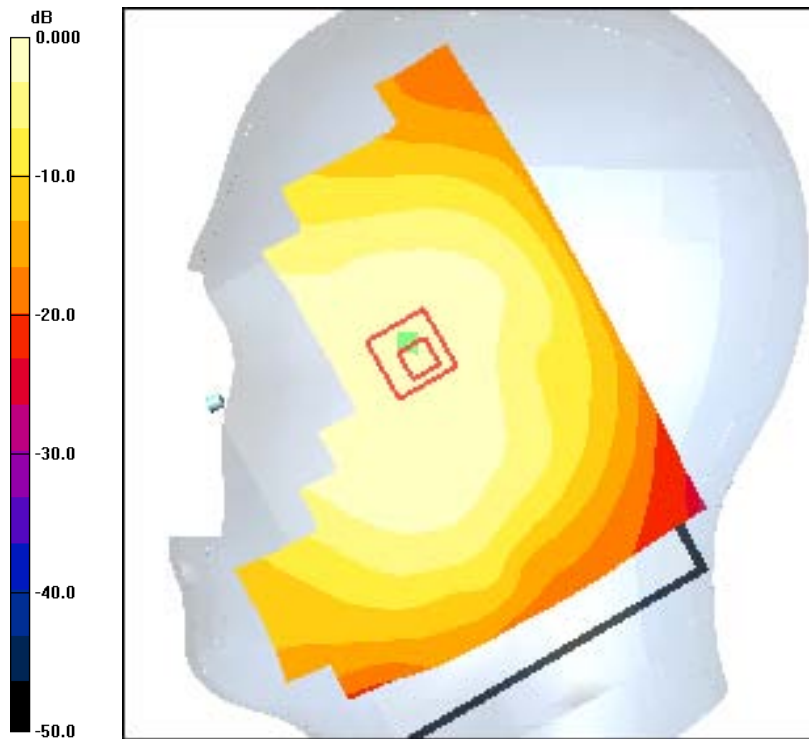
**CDMA-800 Ch383 RC/Zoom Scan (7x7x7)/Cube 0:** Measurement grid: dx=5mm, dy=5mm, dz=5mm

Reference Value = 16.6 V/m; Power Drift = -0.175 dB

Peak SAR (extrapolated) = 0.355 W/kg

**SAR(1 g) = 0.283 mW/g; SAR(10 g) = 0.216 mW/g**

Maximum value of SAR (measured) = 0.297 mW/g



0 dB = 0.297mW/g



Applicant:	Kyocera
FCC ID:	V65M9300
Report #:	CT-M9300-9B1-1210-R1

Test Laboratory: Comptest/Kyocera

Date: 12/13/2010

**FCC M9300 CELL Open Right Ch383 RT**

Communication System: CDMA-800, Frequency: 836.49 MHz, Duty Cycle: 1:1

Medium: Head 835 MHz, Medium parameters used:  $f = 836.5$  MHz;  $\sigma = 0.9$  mho/m;  $\epsilon_r = 40.5$ ;  $\rho = 1000$  kg/m<sup>3</sup>

Phantom: SAM 12, Phantom section: Right Section

**DASY4 Configuration:**

Probe: ET3DV6 - SN1618, ConvF(6.52, 6.52, 6.52), Calibrated: 8/11/2010

Sensor-Surface: 4mm (Mechanical Surface Detection),

Electronics: DAE4 Sn530, Calibrated: 4/23/2010

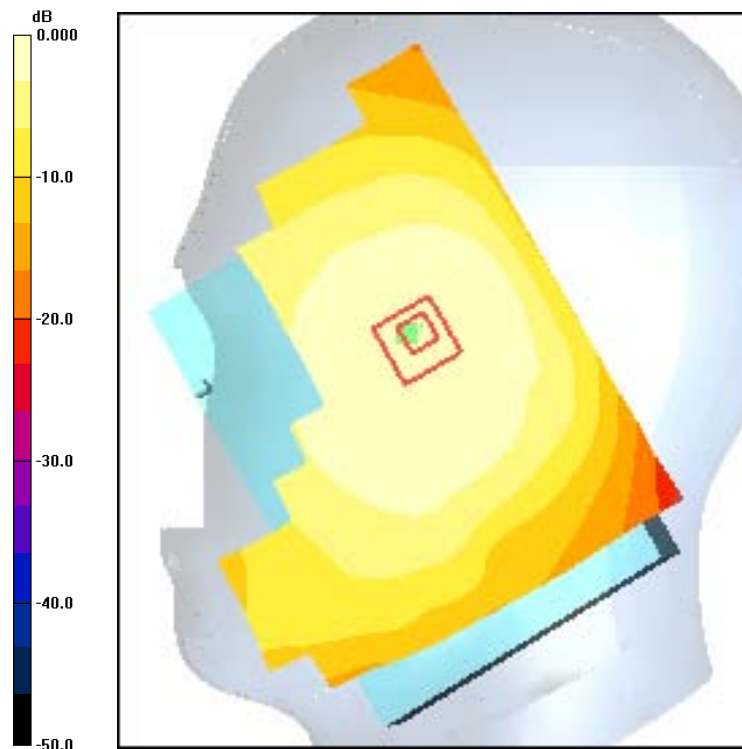
Measurement SW: DASY4, V4.7 Build 80

Postprocessing SW: SEMCAD, V1.8 Build 186

**Temperature:** Room T = 21.8̄ 1 deg C, Liquid T = 22.0̄ 1 deg C

**CDMA-800 Ch383 RT/Area Scan (101x121x1):** Measurement grid: dx=15mm, dy=15mm  
Maximum value of SAR (interpolated) = 0.226 mW/g

**CDMA-800 Ch383 RT/Zoom Scan (7x7x7)/Cube 0:** Measurement grid: dx=5mm, dy=5mm, dz=5mm  
Reference Value = 10.6 V/m; Power Drift = -0.029 dB  
Peak SAR (extrapolated) = 0.256 W/kg  
**SAR(1 g) = 0.212 mW/g; SAR(10 g) = 0.166 mW/g**  
Maximum value of SAR (measured) = 0.225 mW/g



0 dB = 0.225mW/g

Applicant:	Kyocera
FCC ID:	V65M9300
Report #:	CT-M9300-9B1-1210-R1

## PCS

Applicant:	Kyocera
FCC ID:	V65M9300
Report #:	CT-M9300-9B1-1210-R1

Test Laboratory: Comptest/Kyocera

Date: 12/8/2010

**FCC M9300 PCS Closed Left Ch 1175 LC**

Communication System: CDMA-1900, Frequency: 1908.75 MHz, Duty Cycle: 1:1

Medium: HSL1900, Medium parameters used (interpolated):  $f = 1908.75$  MHz;  $\sigma = 1.45$  mho/m;  $\epsilon_r = 38.7$ ;  $\rho = 1000$  kg/m<sup>3</sup> Phantom: SAM 12, Phantom section: Left Section

**DASY4 Configuration:**

Probe: ES3DV3 - SN3035, ConvF(5, 5, 5), Calibrated: 9/9/2010

Sensor-Surface: 4mm (Mechanical Surface Detection),

Electronics: DAE4 Sn675, Calibrated: 4/21/2010

Measurement SW: DASY4, V4.7 Build 80

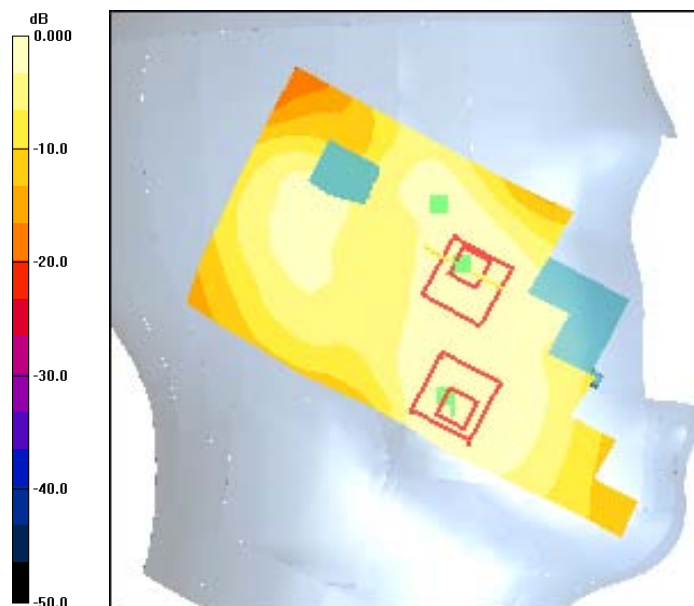
Postprocessing SW: SEMCAD, V1.8 Build 186

**Temperature:** Room T = 21.8̄ 1 deg C, Liquid T = 22.0̄ 1 deg C

**CDMA-1900\_Ch 1175 LC/Area Scan (111x61x1):** Measurement grid: dx=15mm, dy=15mm  
Maximum value of SAR (interpolated) = 0.363 mW/g

**CDMA-1900\_Ch 1175 LC/Zoom Scan (7x7x7)/Cube 0:** Measurement grid: dx=5mm, dy=5mm, dz=5mm  
Reference Value = 10.5 V/m; Power Drift = -0.117 dB  
Peak SAR (extrapolated) = 0.487 W/kg  
**SAR(1 g) = 0.316 mW/g; SAR(10 g) = 0.200 mW/g**  
Maximum value of SAR (measured) = 0.339 mW/g

**CDMA-1900\_Ch 1175 LC/Zoom Scan (7x7x7)/Cube 1:** Measurement grid: dx=5mm, dy=5mm, dz=5mm  
Reference Value = 10.5 V/m; Power Drift = -0.117 dB  
Peak SAR (extrapolated) = 0.404 W/kg  
**SAR(1 g) = 0.270 mW/g; SAR(10 g) = 0.175 mW/g**  
Maximum value of SAR (measured) = 0.293 mW/g



0 dB = 0.293mW/g

Applicant:	Kyocera
FCC ID:	V65M9300
Report #:	CT-M9300-9B1-1210-R1

Test Laboratory: Comptest/Kyocera

Date: 12/8/2010

**FCC M9300 PCS Closed Left Ch 1175 LT**

Communication System: CDMA-1900, Frequency: 1908.75 MHz, Duty Cycle: 1:1

Medium: HSL1900, Medium parameters used (interpolated):  $f = 1908.75$  MHz;  $\sigma = 1.45$  mho/m;  $\epsilon_r = 38.7$ ;  $\rho = 1000$  kg/m<sup>3</sup>

Phantom: SAM 12, Phantom section: Left Section

**DASY4 Configuration:**

Probe: ES3DV3 - SN3035, ConvF(5, 5, 5), Calibrated: 9/9/2010

Sensor-Surface: 4mm (Mechanical Surface Detection),

Electronics: DAE4 Sn675, Calibrated: 4/21/2010

Measurement SW: DASY4, V4.7 Build 80

Postprocessing SW: SEMCAD, V1.8 Build 186

**Temperature:** Room T = 21.8 +/- 1 deg C, Liquid T = 22.0 +/- 1 deg C

**CDMA-1900\_Ch 1175 LT/Area Scan (111x61x1):** Measurement grid: dx=15mm, dy=15mm

Maximum value of SAR (interpolated) = 0.582 mW/g

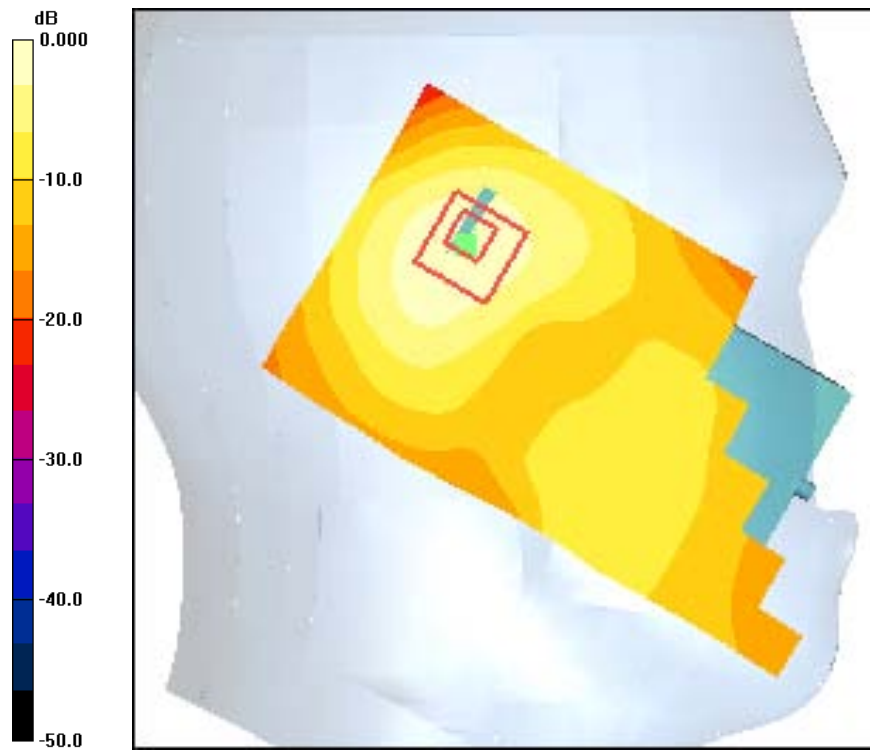
**CDMA-1900\_Ch 1175 LT/Zoom Scan (7x7x7)/Cube 0:** Measurement grid: dx=5mm, dy=5mm, dz=5mm

Reference Value = 16.1 V/m; Power Drift = -0.147 dB

Peak SAR (extrapolated) = 0.767 W/kg

**SAR(1 g) = 0.485 mW/g; SAR(10 g) = 0.277 mW/g**

Maximum value of SAR (measured) = 0.537 mW/g



0 dB = 0.537mW/g

Applicant:	Kyocera
FCC ID:	V65M9300
Report #:	CT-M9300-9B1-1210-R1

Test Laboratory: Comptest/Kyocera

Date: 12/8/2010

**FCC M9300 PCS Closed Right Ch1175 RC**

Communication System: CDMA-1900, Frequency: 1908.75 MHz, Duty Cycle: 1:1

Medium: HSL1900, Medium parameters used (interpolated):  $f = 1908.75$  MHz;  $\sigma = 1.45$  mho/m;  $\epsilon_r = 38.7$ ;  $\rho = 1000$  kg/m<sup>3</sup>

Phantom: SAM 12, Phantom section: Right Section

**DASY4 Configuration:**

Probe: ES3DV3 - SN3035, ConvF(5, 5, 5), Calibrated: 9/9/2010

Sensor-Surface: 4mm (Mechanical Surface Detection),

Electronics: DAE4 Sn675, Calibrated: 4/21/2010

Measurement SW: DASY4, V4.7 Build 80

Postprocessing SW: SEMCAD, V1.8 Build 186

**Temperature:** Room T = 21.8 +/- 1 deg C, Liquid T = 22.0 +/- 1 deg C

**CDMA-1900 Ch1175 RC/Area Scan (161x61x1):** Measurement grid: dx=15mm, dy=15mm.

Maximum value of SAR (interpolated) = 0.600 mW/g

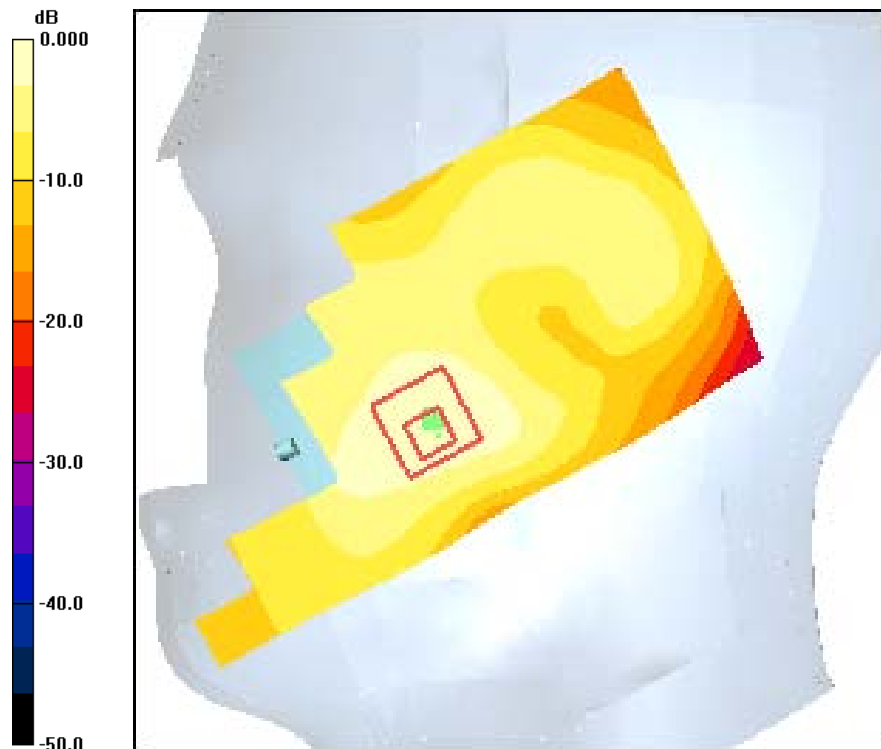
**CDMA-1900 Ch1175 RC/Zoom Scan (7x7x7)/Cube 0:** Measurement grid: dx=5mm, dy=5mm, dz=5mm

Reference Value = 6.78 V/m; Power Drift = -0.079 dB

Peak SAR (extrapolated) = 0.846 W/kg

**SAR(1 g) = 0.541 mW/g; SAR(10 g) = 0.327 mW/g**

Maximum value of SAR (measured) = 0.595 mW/g



0 dB = 0.595mW/g

Applicant:	Kyocera
FCC ID:	V65M9300
Report #:	CT-M9300-9B1-1210-R1

Test Laboratory: Comptest/Kyocera

Date: 12/8/2010

**FCC M9300 PCS Closed Right Ch1175 RT**

Communication System: CDMA-1900, Frequency: 1908.75 MHz, Duty Cycle: 1:1

Medium: HSL1900, Medium parameters used (interpolated):  $f = 1908.75$  MHz;  $\sigma = 1.45$  mho/m;  $\epsilon_r = 38.7$ ;  $\rho = 1000$  kg/m<sup>3</sup>

Phantom: SAM 12, Phantom section: Right Section

**DASY4 Configuration:**

Probe: ES3DV3 - SN3035, ConvF(5, 5, 5), Calibrated: 9/9/2010

Sensor-Surface: 4mm (Mechanical Surface Detection),

Electronics: DAE4 Sn675, Calibrated: 4/21/2010

Measurement SW: DASY4, V4.7 Build 80

Postprocessing SW: SEMCAD, V1.8 Build 186

**Temperature:** Room T = 21.8 +/- 1 deg C, Liquid T = 22.0 +/- 1 deg C

**CDMA-1900 Ch1175 RT/Area Scan (161x61x1):** Measurement grid: dx=15mm, dy=15mm

Maximum value of SAR (interpolated) = 0.433 mW/g

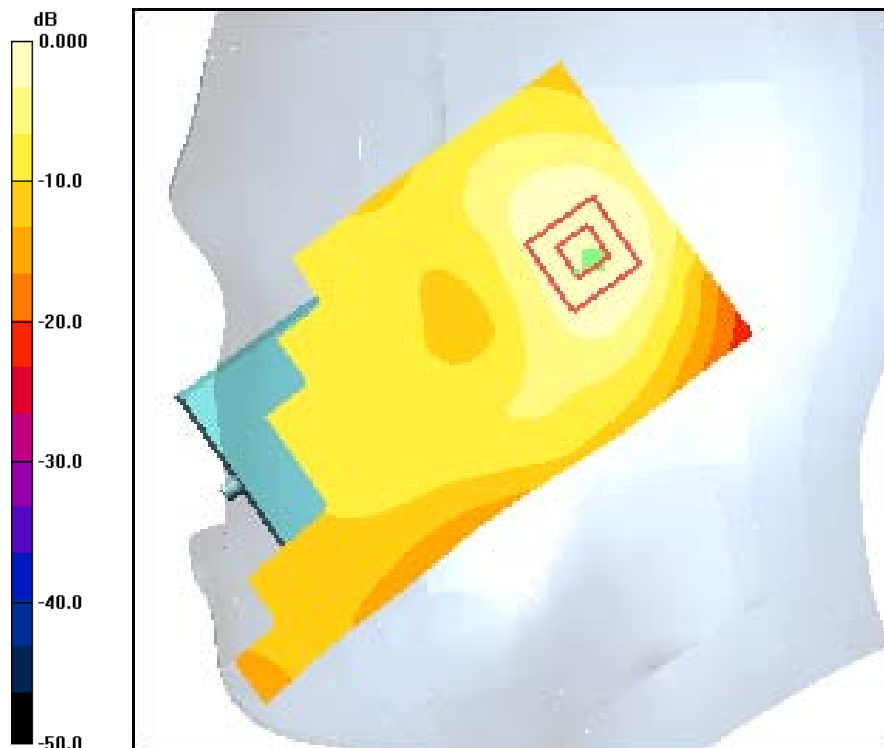
**CDMA-1900 Ch1175 RT/Zoom Scan (7x7x7)/Cube 0:** Measurement grid: dx=5mm, dy=5mm, dz=5mm

Reference Value = 3.70 V/m; Power Drift = -0.131 dB

Peak SAR (extrapolated) = 0.520 W/kg

**SAR(1 g) = 0.324 mW/g; SAR(10 g) = 0.198 mW/g**

Maximum value of SAR (measured) = 0.351 mW/g



0 dB = 0.351mW/g

Applicant:	Kyocera
FCC ID:	V65M9300
Report #:	CT-M9300-9B1-1210-R1

Test Laboratory: Comptest/Kyocera

Date: 12/17/2010

**FCC M9300 PCS Open Left Ch25 LC**

Communication System: CDMA-1900, Frequency: 1851.25 MHz, Duty Cycle: 1:1

Medium: HSL1900, Medium parameters used (interpolated):  $f = 1851.25$  MHz;  $\sigma = 1.43$  mho/m;  $\epsilon_r = 38.6$ ;  $\rho = 1000$  kg/m<sup>3</sup> Phantom: SAM 12, Phantom section: Left Section

**DASY4 Configuration:**

Probe: ES3DV3 - SN3035, ConvF(5, 5, 5), Calibrated: 9/9/2010

Sensor-Surface: 4mm (Mechanical Surface Detection),

Electronics: DAE4 Sn675, Calibrated: 4/21/2010

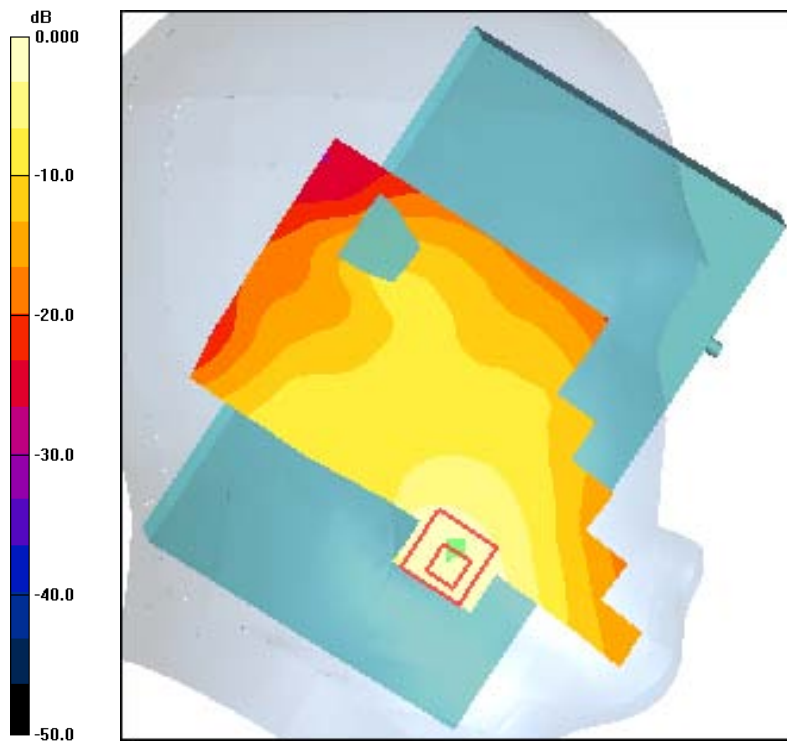
Measurement SW: DASY4, V4.7 Build 80

Postprocessing SW: SEMCAD, V1.8 Build 186

**Temperature:** Room T = 21.8 +/- 1 deg C, Liquid T = 22.0 +/- 1 deg C

**CDMA-1900\_Ch25 LC/Area Scan (111x61x1):** Measurement grid: dx=15mm, dy=15mm  
Maximum value of SAR (interpolated) = 1.27 mW/g

**CDMA-1900\_Ch25 LC/Zoom Scan (7x7x7)/Cube 0:** Measurement grid: dx=5mm, dy=5mm, dz=5mm  
Reference Value = 4.97 V/m; Power Drift = 0.184 dB  
Peak SAR (extrapolated) = 1.94 W/kg  
**SAR(1 g) = 1.29 mW/g; SAR(10 g) = 0.780 mW/g**  
Maximum value of SAR (measured) = 1.41 mW/g



0 dB = 1.41mW/g



Applicant:	Kyocera
FCC ID:	V65M9300
Report #:	CT-M9300-9B1-1210-R1

Test Laboratory: Comptest/Kyocera

Date: 12/17/2010

**FCC M9300 PCS Open Left CH600 LC**

Communication System: CDMA-1900, Frequency: 1880 MHz, Duty Cycle: 1:1

Medium: HSL1900, Medium parameters used:  $f = 1880$  MHz;  $\sigma = 1.43$  mho/m;  $\epsilon_r = 38.6$ ;  $\rho = 1000$  kg/m<sup>3</sup>

Phantom: SAM 12, Phantom section: Left Section

**DASY4 Configuration:**

Probe: ES3DV3 - SN3035, ConvF(5, 5, 5), Calibrated: 9/9/2010

Sensor-Surface: 4mm (Mechanical Surface Detection),

Electronics: DAE4 Sn675, Calibrated: 4/21/2010

Measurement SW: DASY4, V4.7 Build 80

Postprocessing SW: SEMCAD, V1.8 Build 186

**Temperature:** Room T = 21.8 +/- 1 deg C, Liquid T = 22.0 +/- 1 deg C

**CDMA-1900\_CH600 LC/Area Scan (101x121x1):** Measurement grid: dx=15mm, dy=15mm

Maximum value of SAR (interpolated) = 1.49 mW/g

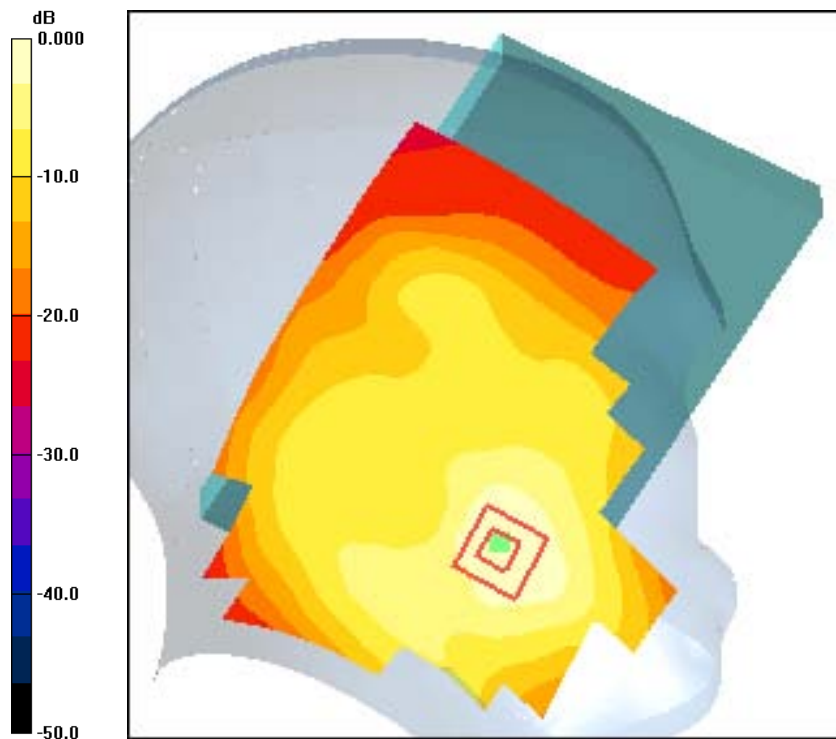
**CDMA-1900\_CH600 LC/Zoom Scan (7x7x7)/Cube 0:** Measurement grid: dx=5mm, dy=5mm, dz=5mm

Reference Value = 5.74 V/m; Power Drift = 0.139 dB

Peak SAR (extrapolated) = 2.05 W/kg

**SAR(1 g) = 1.36 mW/g; SAR(10 g) = 0.814 mW/g**

Maximum value of SAR (measured) = 1.47 mW/g



0 dB = 1.47mW/g

Applicant:	Kyocera
FCC ID:	V65M9300
Report #:	CT-M9300-9B1-1210-R1

Test Laboratory: Comptest/Kyocera

Date: 12/17/2010

**FCC M9300 PCS Open Left Ch 1175 LC**

Communication System: CDMA-1900, Frequency: 1908.75 MHz, Duty Cycle: 1:1

Medium: HSL1900, Medium parameters used (interpolated):  $f = 1908.75$  MHz;  $\sigma = 1.43$  mho/m;  $\epsilon_r = 38.6$ ;  $\rho = 1000$  kg/m<sup>3</sup> Phantom: SAM 12, Phantom section: Left Section

**DASY4 Configuration:**

Probe: ES3DV3 - SN3035, ConvF(5, 5, 5), Calibrated: 9/9/2010

Sensor-Surface: 4mm (Mechanical Surface Detection),

Electronics: DAE4 Sn675, Calibrated: 4/21/2010

Measurement SW: DASY4, V4.7 Build 80

Postprocessing SW: SEMCAD, V1.8 Build 186

**Temperature:** Room T = 21.8 +/- 1 deg C, Liquid T = 22.0 +/- 1 deg C

**CDMA-1900\_Ch 1175 LC/Area Scan (101x121x1):** Measurement grid: dx=15mm, dy=15mm  
Maximum value of SAR (interpolated) = 1.45 mW/g

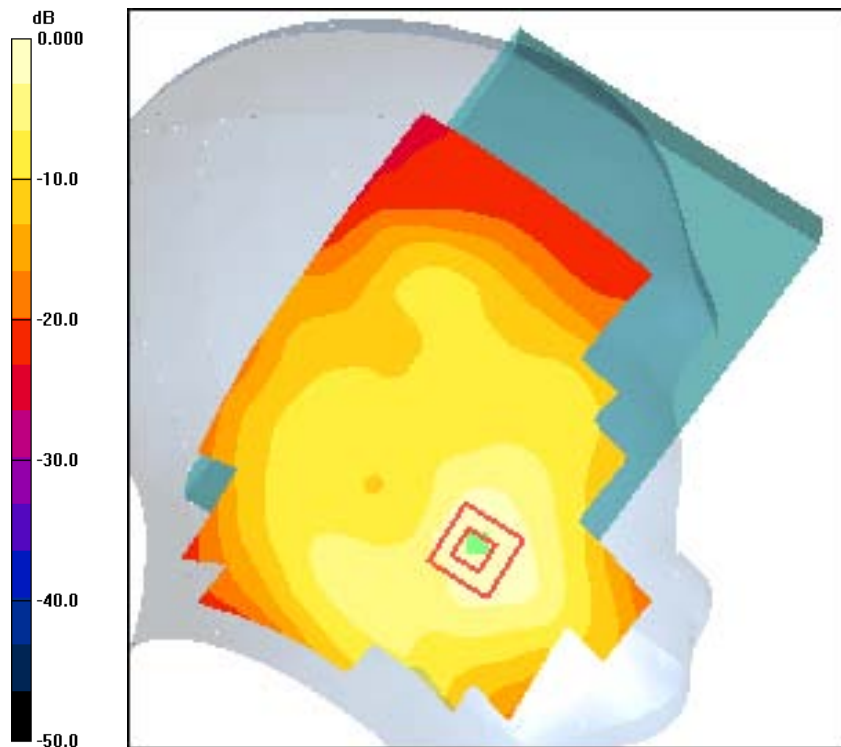
**CDMA-1900\_Ch 1175 LC/Zoom Scan (7x7x7)/Cube 0:** Measurement grid: dx=5mm, dy=5mm, dz=5mm

Reference Value = 5.58 V/m; Power Drift = 0.055 dB

Peak SAR (extrapolated) = 1.95 W/kg

**SAR(1 g) = 1.31 mW/g; SAR(10 g) = 0.776 mW/g**

Maximum value of SAR (measured) = 1.42 mW/g



0 dB = 1.42mW/g

Applicant:	Kyocera
FCC ID:	V65M9300
Report #:	CT-M9300-9B1-1210-R1

Test Laboratory: Comptest/Kyocera

Date: 12/17/2010

**FCC M9300 PCS Center Open Left Ch 1175 LT**

Communication System: CDMA-1900, Frequency: 1908.75 MHz, Duty Cycle: 1:1

Medium: HSL1900, Medium parameters used (interpolated):  $f = 1908.75$  MHz;  $\sigma = 1.43$  mho/m;  $\epsilon_r = 38.6$ ;  $\rho = 1000$  kg/m<sup>3</sup> Phantom: SAM 12, Phantom section: Left Section

**DASY4 Configuration:**

Probe: ES3DV3 - SN3035, ConvF(5, 5, 5), Calibrated: 9/9/2010

Sensor-Surface: 4mm (Mechanical Surface Detection),

Electronics: DAE4 Sn675, Calibrated: 4/21/2010

Measurement SW: DASY4, V4.7 Build 80

Postprocessing SW: SEMCAD, V1.8 Build 186

**Temperature:** Room T = 21.8 +/- 1 deg C, Liquid T = 22.0 +/- 1 deg C

**CDMA-1900\_Ch 1175 LT/Area Scan (101x121x1):** Measurement grid: dx=15mm, dy=15mm  
Maximum value of SAR (interpolated) = 0.289 mW/g

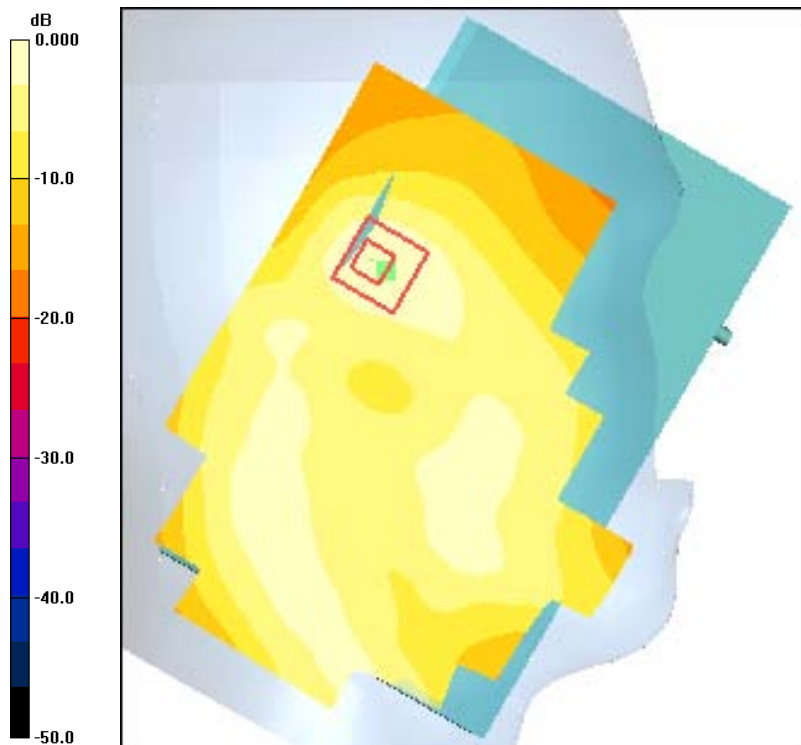
**CDMA-1900\_Ch 1175 LT/Zoom Scan (7x7x7)/Cube 0:** Measurement grid: dx=5mm, dy=5mm, dz=5mm

Reference Value = 9.02 V/m; Power Drift = -0.167 dB

Peak SAR (extrapolated) = 0.389 W/kg

**SAR(1 g) = 0.255 mW/g; SAR(10 g) = 0.148 mW/g**

Maximum value of SAR (measured) = 0.280 mW/g



0 dB = 0.280mW/g

Applicant:	Kyocera
FCC ID:	V65M9300
Report #:	CT-M9300-9B1-1210-R1

Test Laboratory: Comptest/Kyocera

Date: 12/17/2010

**FCC M9300 PCS Open Right Ch1175 RC**

Communication System: CDMA-1900, Frequency: 1908.75 MHz, Duty Cycle: 1:1

Medium: HSL1900, Medium parameters used (interpolated):  $f = 1908.75$  MHz;  $\sigma = 1.43$  mho/m;  $\epsilon_r = 38.6$ ;  $\rho = 1000$  kg/m<sup>3</sup> Phantom: SAM 12, Phantom section: Right Section

**DASY4 Configuration:**

Probe: ES3DV3 - SN3035, ConvF(5, 5, 5), Calibrated: 9/9/2010

Sensor-Surface: 4mm (Mechanical Surface Detection),

Electronics: DAE4 Sn675, Calibrated: 4/21/2010

Measurement SW: DASY4, V4.7 Build 80

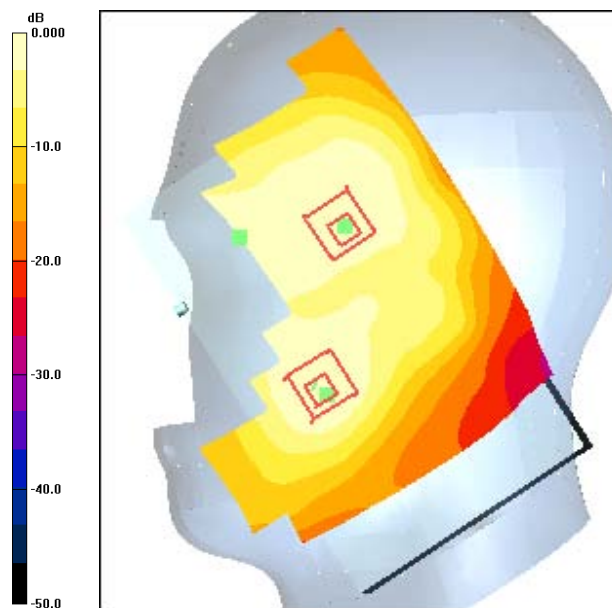
Postprocessing SW: SEMCAD, V1.8 Build 186

**Temperature:** Room T = 21.8 +/- 1 deg C, Liquid T = 22.0 +/- 1 deg C

**CDMA-1900 Ch1175 RC/Area Scan (101x121x1):** Measurement grid: dx=15mm, dy=15mm  
Maximum value of SAR (interpolated) = 0.574 mW/g

**CDMA-1900 Ch1175 RC/Zoom Scan (7x7x7)/Cube 0:** Measurement grid: dx=5mm, dy=5mm, dz=5mm  
Reference Value = 6.25 V/m; Power Drift = -0.127 dB  
Peak SAR (extrapolated) = 0.815 W/kg  
**SAR(1 g) = 0.516 mW/g; SAR(10 g) = 0.313 mW/g**  
Maximum value of SAR (measured) = 0.564 mW/g

**CDMA-1900 Ch1175 RC/Zoom Scan (7x7x7)/Cube 1:** Measurement grid: dx=5mm, dy=5mm, dz=5mm  
Reference Value = 6.25 V/m; Power Drift = -0.127 dB  
Peak SAR (extrapolated) = 0.599 W/kg  
**SAR(1 g) = 0.409 mW/g; SAR(10 g) = 0.252 mW/g**  
Maximum value of SAR (measured) = 0.439 mW/g



0 dB = 0.439mW/g

Applicant:	Kyocera
FCC ID:	V65M9300
Report #:	CT-M9300-9B1-1210-R1

Test Laboratory: Comptest/Kyocera

Date: 12/17/2010

**FCC M9300 PCS Open Right Ch1175 RT**

Communication System: CDMA-1900, Frequency: 1908.75 MHz, Duty Cycle: 1:1

Medium: HSL1900, Medium parameters used (interpolated):  $f = 1908.75$  MHz;  $\sigma = 1.43$  mho/m;  $\epsilon_r = 38.6$ ;  $\rho = 1000$  kg/m<sup>3</sup> Phantom: SAM 12, Phantom section: Right Section

**DASY4 Configuration:**

Probe: ES3DV3 - SN3035, ConvF(5, 5, 5), Calibrated: 9/9/2010

Sensor-Surface: 4mm (Mechanical Surface Detection),

Electronics: DAE4 Sn675, Calibrated: 4/21/2010

Measurement SW: DASY4, V4.7 Build 80

Postprocessing SW: SEMCAD, V1.8 Build 186

**Temperature:** Room T = 21.8 +/- 1 deg C, Liquid T = 22.0 +/- 1 deg C

**CDMA-1900 Ch1175 RT/Area Scan (101x121x1):** Measurement grid: dx=15mm, dy=15mm  
Maximum value of SAR (interpolated) = 0.300 mW/g

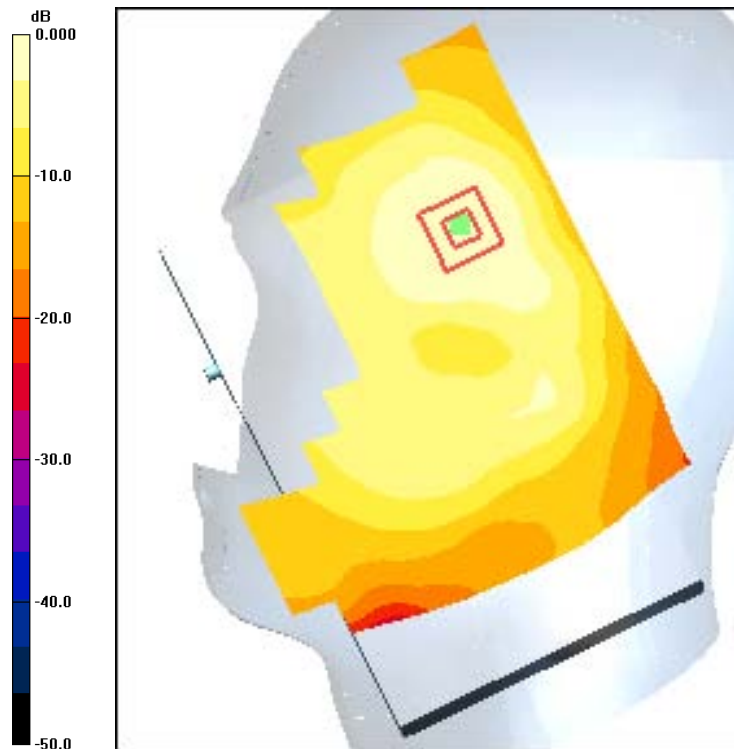
**CDMA-1900 Ch1175 RT/Zoom Scan (7x7x7)/Cube 0:** Measurement grid: dx=5mm, dy=5mm, dz=5mm

Reference Value = 6.99 V/m; Power Drift = -0.104 dB

Peak SAR (extrapolated) = 0.396 W/kg

**SAR(1 g) = 0.270 mW/g; SAR(10 g) = 0.175 mW/g**

Maximum value of SAR (measured) = 0.291 mW/g



0 dB = 0.291mW/g

Applicant:	Kyocera
FCC ID:	V65M9300
Report #:	CT-M9300-9B1-1210-R1

## WLAN



Test Laboratory: Comptest/Kyocera

Date: 03/09/2011

**FCC M9300 WLAN Closed Left Ch11 LC**

Communication System: WLAN-2450, Frequency: 2462 MHz, Duty Cycle: 1:1

Medium: HSL2450, Medium parameters used (interpolated):  $f = 2462$  MHz;  $\sigma = 1.86$  mho/m;  $\epsilon_r = 38.1$ ;  $\rho = 1000$  kg/m<sup>3</sup>

Phantom: SAM 12, Phantom section: Left Section

**DASY4 Configuration:**

Probe: ES3DV3 - SN3078, ConvF(4.26, 4.26, 4.26), Calibrated: 7/14/2010

Sensor-Surface: 4mm (Mechanical Surface Detection),

Electronics: DAE4 Sn602, Calibrated: 7/14/2010

Measurement SW: DASY4, V4.7 Build 80

Postprocessing SW: SEMCAD, V1.8 Build 186

**Temperature:** Room T = 21.8 +/- 1 deg C, Liquid T = 22.0 +/- 1 deg C

**WLAN-2450\_Ch11 LC/Area Scan (111x61x1):** Measurement grid: dx=15mm, dy=15mm

Maximum value of SAR (interpolated) = 0.030 mW/g

**WLAN-2450\_Ch11 LC/Zoom Scan (7x7x7)/Cube 0:** Measurement grid: dx=5mm, dy=5mm, dz=5mm

Reference Value = 3.03 V/m; Power Drift = -0.082 dB

Peak SAR (extrapolated) = 0.059 W/kg

**SAR(1 g) = 0.030 mW/g; SAR(10 g) = 0.016 mW/g**

Maximum value of SAR (measured) = 0.033 mW/g

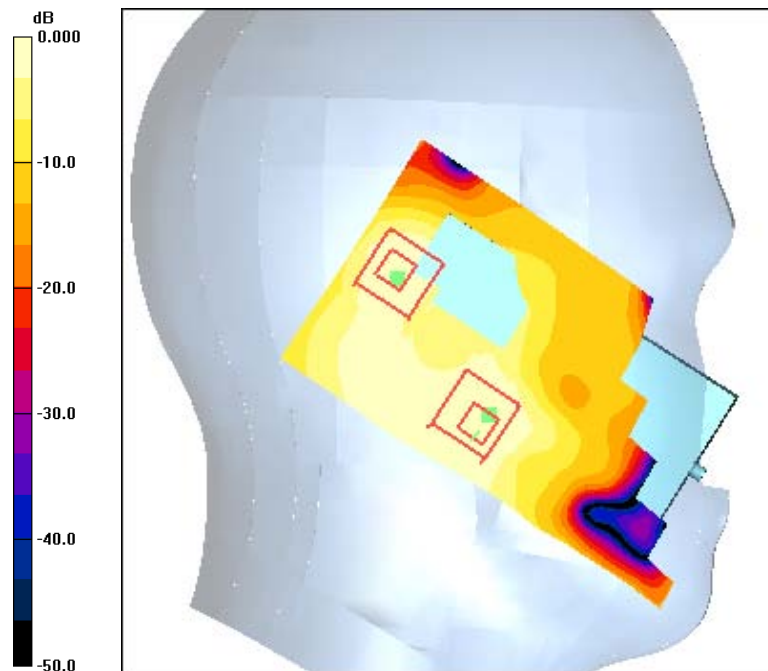
**WLAN-2450\_Ch11 LC/Zoom Scan (7x7x7)/Cube 1:** Measurement grid: dx=5mm, dy=5mm, dz=5mm

Reference Value = 3.03 V/m; Power Drift = -0.082 dB

Peak SAR (extrapolated) = 0.047 W/kg

**SAR(1 g) = 0.023 mW/g; SAR(10 g) = 0.011 mW/g**

Maximum value of SAR (measured) = 0.025 mW/g



0 dB = 0.025mW/g



Applicant:	Kyocera
FCC ID:	V65M9300
Report #:	CT-M9300-9B1-1210-R1

Test Laboratory: Comptest/Kyocera

Date: 03/09/2011

**FCC M9300 WLAN Closed Left Ch11 LT**

Communication System: WLAN-2450, Frequency: 2462 MHz, Duty Cycle: 1:1

Medium: HSL2450, Medium parameters used (interpolated):  $f = 2462$  MHz;  $\sigma = 1.86$  mho/m;  $\epsilon_r = 38.1$ ;  $\rho = 1000$  kg/m<sup>3</sup>

Phantom: SAM 12, Phantom section: Left Section

**DASY4 Configuration:**

Probe: ES3DV3 - SN3078, ConvF(4.26, 4.26, 4.26), Calibrated: 7/14/2010

Sensor-Surface: 4mm (Mechanical Surface Detection),

Electronics: DAE4 Sn602, Calibrated: 7/14/2010

Measurement SW: DASY4, V4.7 Build 80

Postprocessing SW: SEMCAD, V1.8 Build 186

**Temperature:** Room T = 21.8 +/- 1 deg C, Liquid T = 22.0 +/- 1 deg C

**WLAN-2450\_Ch11 LT/Area Scan (111x61x1):** Measurement grid: dx=15mm, dy=15mm

Maximum value of SAR (interpolated) = 0.024 mW/g

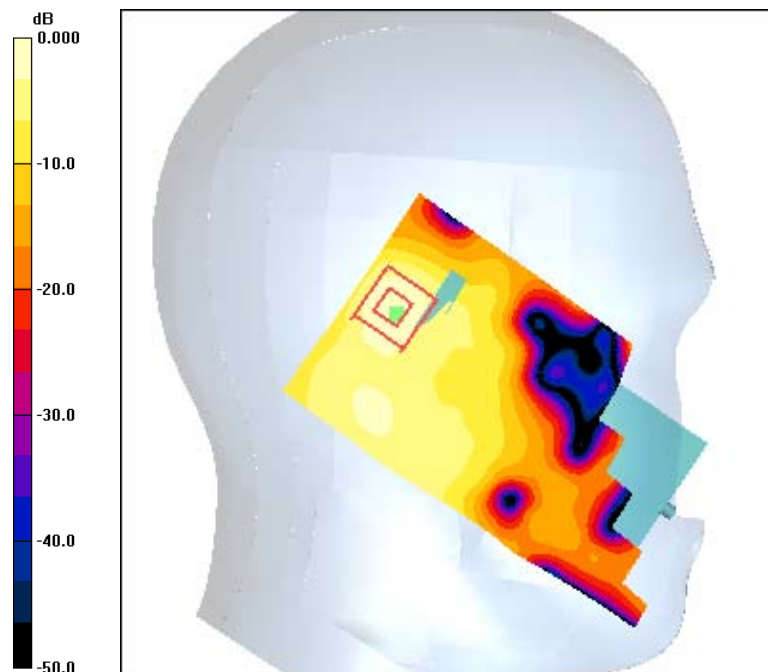
**WLAN-2450\_Ch11 LT/Zoom Scan (7x7x7)/Cube 0:** Measurement grid: dx=5mm, dy=5mm, dz=5mm

Reference Value = 2.72 V/m; Power Drift = -0.078 dB

Peak SAR (extrapolated) = 0.042 W/kg

**SAR(1 g) = 0.022 mW/g; SAR(10 g) = 0.00977 mW/g**

Maximum value of SAR (measured) = 0.025 mW/g



0 dB = 0.025mW/g

Applicant:	Kyocera
FCC ID:	V65M9300
Report #:	CT-M9300-9B1-1210-R1

Test Laboratory: Comptest/Kyocera

Date: 03/09/2011

**FCC M9300 WLAN Closed Right Ch11 RC**

Communication System: WLAN-2450, Frequency: 2462 MHz, Duty Cycle: 1:1

Medium: HSL2450, Medium parameters used (interpolated):  $f = 2462$  MHz;  $\sigma = 1.86$  mho/m;  $\epsilon_r = 38.1$ ;  $\rho = 1000$  kg/m<sup>3</sup>

Phantom: SAM 12, Phantom section: Right Section

**DASY4 Configuration:**

Probe: ES3DV3 - SN3078, ConvF(4.26, 4.26, 4.26), Calibrated: 7/14/2010

Sensor-Surface: 4mm (Mechanical Surface Detection),

Electronics: DAE4 Sn602, Calibrated: 7/14/2010

Measurement SW: DASY4, V4.7 Build 80

Postprocessing SW: SEMCAD, V1.8 Build 186

**Temperature:** Room T = 21.8 +/- 1 deg C, Liquid T = 22.0 +/- 1 deg C

**WLAN-2450\_Ch11 RC/Area Scan (141x61x1):** Measurement grid: dx=15mm, dy=15mm

Maximum value of SAR (interpolated) = 0.059 mW/g

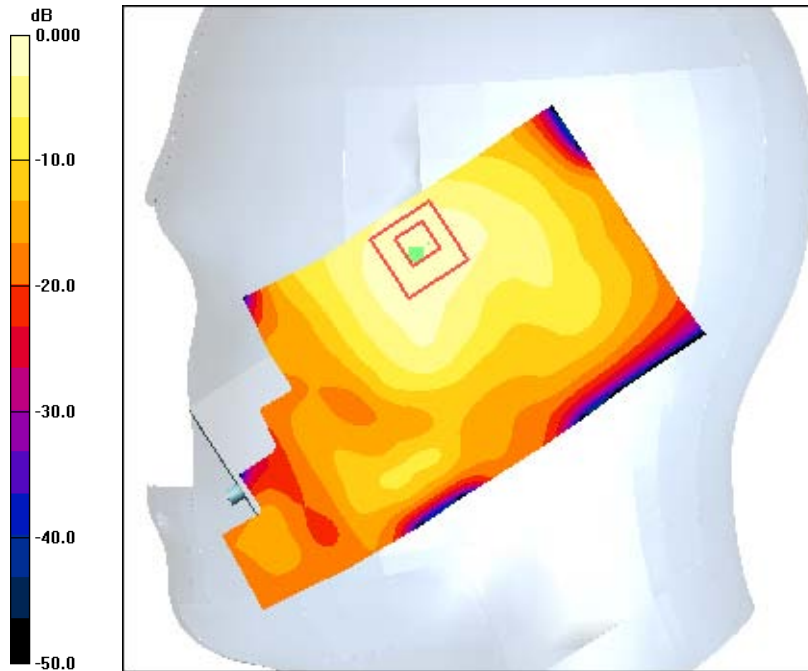
**WLAN-2450\_Ch11 RC/Zoom Scan (7x7x7)/Cube 0:** Measurement grid: dx=5mm, dy=5mm, dz=5mm

Reference Value = 2.60 V/m; Power Drift = 0.163 dB

Peak SAR (extrapolated) = 0.119 W/kg

**SAR(1 g) = 0.056 mW/g; SAR(10 g) = 0.028 mW/g**

Maximum value of SAR (measured) = 0.062 mW/g



0 dB = 0.062mW/g



Applicant:	Kyocera
FCC ID:	V65M9300
Report #:	CT-M9300-9B1-1210-R1

**Interpolated SAR(x,y,z,f0)**  
SAR; Z Scan: Value Along Z, X=0, Y=0



Applicant:	Kyocera
FCC ID:	V65M9300
Report #:	CT-M9300-9B1-1210-R1

Test Laboratory: Comptest/Kyocera

Date: 03/09/2011

**FCC M9300 WLAN Closed Right Ch11 RT**

Communication System: WLAN-2450, Frequency: 2462 MHz, Duty Cycle: 1:1

Medium: HSL2450, Medium parameters used (interpolated):  $f = 2462$  MHz;  $\sigma = 1.86$  mho/m;  $\epsilon_r = 38.1$ ;  $\rho = 1000$  kg/m<sup>3</sup>

Phantom: SAM 12, Phantom section: Right Section

**DASY4 Configuration:**

Probe: ES3DV3 - SN3078, ConvF(4.26, 4.26, 4.26), Calibrated: 7/14/2010

Sensor-Surface: 4mm (Mechanical Surface Detection),

Electronics: DAE4 Sn602, Calibrated: 7/14/2010

Measurement SW: DASY4, V4.7 Build 80

Postprocessing SW: SEMCAD, V1.8 Build 186

**Temperature:** Room T = 21.8 +/- 1 deg C, Liquid T = 22.0 +/- 1 deg C

**WLAN-2450\_Ch11 RT/Area Scan (121x61x1):** Measurement grid: dx=15mm, dy=15mm

Maximum value of SAR (interpolated) = 0.022 mW/g

**WLAN-2450\_Ch11 RT/Zoom Scan (7x7x7)/Cube 0:** Measurement grid: dx=5mm, dy=5mm, dz=5mm

Reference Value = 2.64 V/m; Power Drift = 0.185 dB

Peak SAR (extrapolated) = 0.039 W/kg

**SAR(1 g) = 0.020 mW/g; SAR(10 g) = 0.010 mW/g**

Maximum value of SAR (measured) = 0.022 mW/g

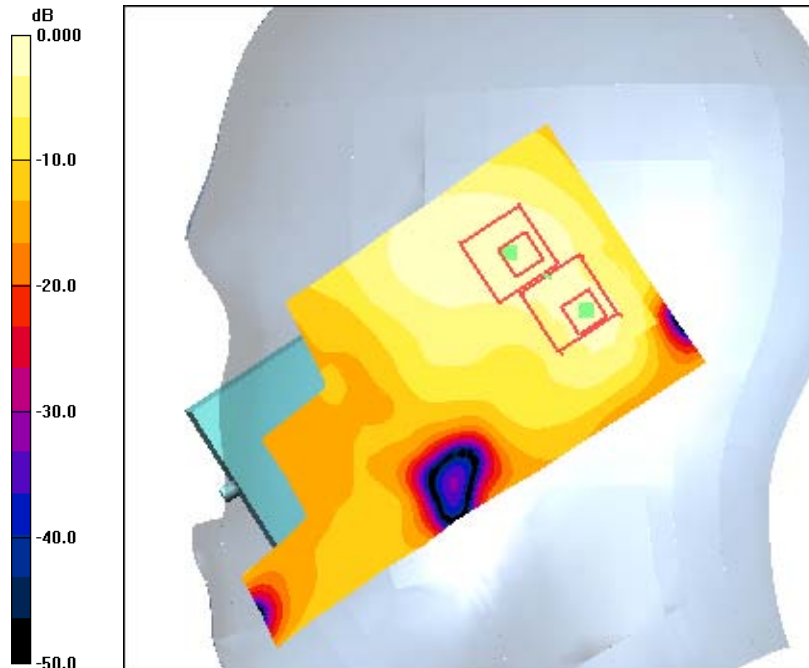
**WLAN-2450\_Ch11 RT/Zoom Scan (7x7x7)/Cube 1:** Measurement grid: dx=5mm, dy=5mm, dz=5mm

Reference Value = 2.64 V/m; Power Drift = 0.185 dB

Peak SAR (extrapolated) = 0.028 W/kg

**SAR(1 g) = 0.014 mW/g; SAR(10 g) = 0.00699 mW/g**

Maximum value of SAR (measured) = 0.017 mW/g



0 dB = 0.022mW/g

Applicant:	Kyocera
FCC ID:	V65M9300
Report #:	CT-M9300-9B1-1210-R1

Test Laboratory: Comptest/Kyocera

Date: 03/09/2011

**FCC M9300 WLAN Open Left Ch11 LC**

Communication System: WLAN-2450, Frequency: 2462 MHz, Duty Cycle: 1:1

Medium: HSL2450, Medium parameters used (interpolated):  $f = 2462$  MHz;  $\sigma = 1.86$  mho/m;  $\epsilon_r = 38.1$ ;  $\rho = 1000$  kg/m<sup>3</sup>

Phantom: SAM 12, Phantom section: Left Section

**DASY4 Configuration:**

Probe: ES3DV3 - SN3078, ConvF(4.26, 4.26, 4.26), Calibrated: 7/14/2010

Sensor-Surface: 4mm (Mechanical Surface Detection),

Electronics: DAE4 Sn602, Calibrated: 7/14/2010

Measurement SW: DASY4, V4.7 Build 80

Postprocessing SW: SEMCAD, V1.8 Build 186

**Temperature:** Room T = 21.8 +/- 1 deg C, Liquid T = 22.0 +/- 1 deg C

**WLAN-2450\_Ch11 LC/Area Scan (101x121x1):** Measurement grid: dx=15mm, dy=15mm

Maximum value of SAR (interpolated) = 0.068 mW/g

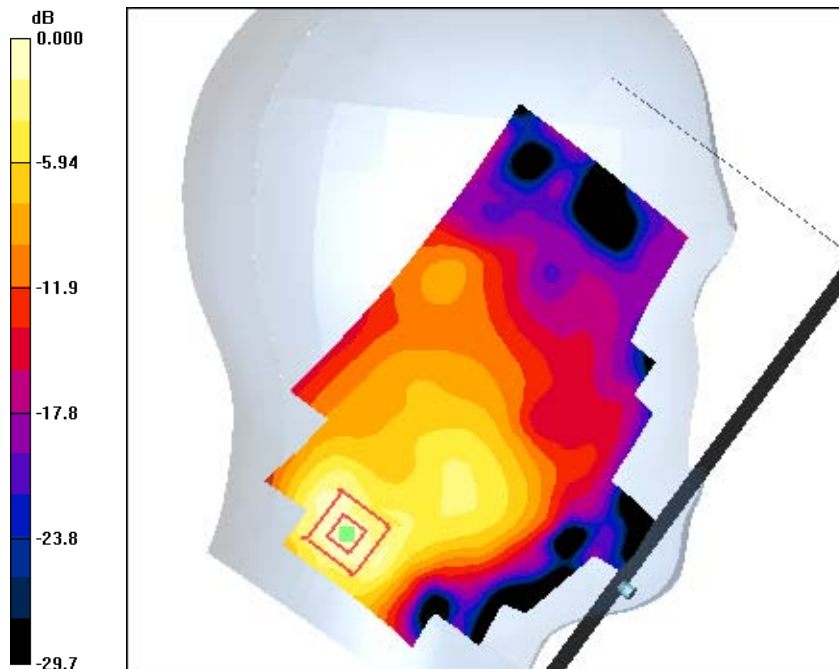
**WLAN-2450\_Ch11 LC/Zoom Scan (7x7x7)/Cube 0:** Measurement grid: dx=5mm, dy=5mm, dz=5mm

Reference Value = 1.79 V/m; Power Drift = 0.158 dB

Peak SAR (extrapolated) = 0.151 W/kg

**SAR(1 g) = 0.060 mW/g; SAR(10 g) = 0.028 mW/g**

Maximum value of SAR (measured) = 0.073 mW/g



0 dB = 0.068mW/g

Applicant:	Kyocera
FCC ID:	V65M9300
Report #:	CT-M9300-9B1-1210-R1

Test Laboratory: Comptest/Kyocera

Date: 03/09/2011

**FCC M9300 WLAN Open Left Ch11 LT**

Communication System: WLAN-2450, Frequency: 2462 MHz, Duty Cycle: 1:1

Medium: HSL2450, Medium parameters used (interpolated):  $f = 2462$  MHz;  $\sigma = 1.86$  mho/m;  $\epsilon_r = 38.1$ ;  $\rho = 1000$  kg/m<sup>3</sup>

Phantom: SAM 12, Phantom section: Left Section

**DASY4 Configuration:**

Probe: ES3DV3 - SN3078, ConvF(4.26, 4.26, 4.26), Calibrated: 7/14/2010

Sensor-Surface: 4mm (Mechanical Surface Detection),

Electronics: DAE4 Sn602, Calibrated: 7/14/2010

Measurement SW: DASY4, V4.7 Build 80

Postprocessing SW: SEMCAD, V1.8 Build 186

**Temperature:** Room T = 21.8 +/- 1 deg C, Liquid T = 22.0 +/- 1 deg C

**WLAN-2450\_Ch11 LT/Area Scan (101x121x1):** Measurement grid: dx=15mm, dy=15mm

Maximum value of SAR (interpolated) = 0.021 mW/g

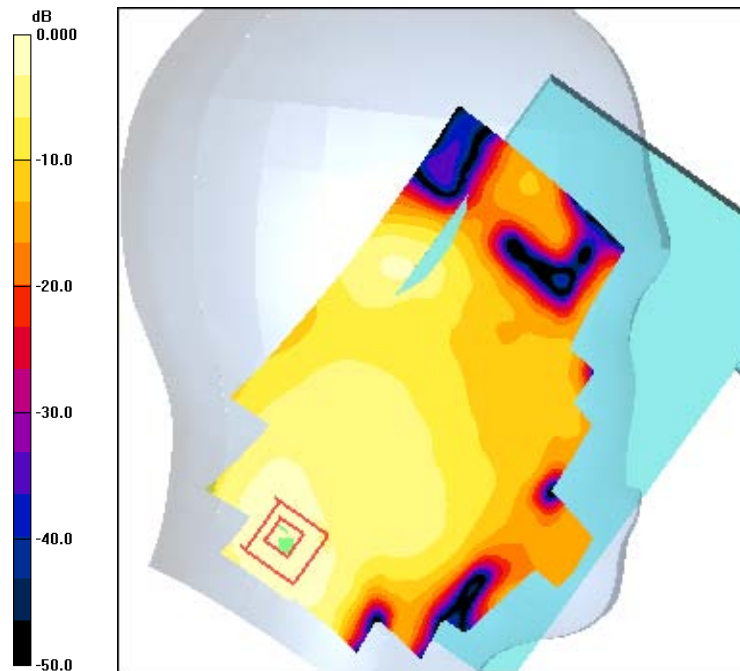
**WLAN-2450\_Ch11 LT/Zoom Scan (7x7x7)/Cube 0:** Measurement grid: dx=5mm, dy=5mm, dz=5mm

Reference Value = 1.88 V/m; Power Drift = -0.018 dB

Peak SAR (extrapolated) = 0.041 W/kg

**SAR(1 g) = 0.020 mW/g; SAR(10 g) = 0.010 mW/g**

Maximum value of SAR (measured) = 0.022 mW/g



0 dB = 0.021mW/g



Applicant:	Kyocera
FCC ID:	V65M9300
Report #:	CT-M9300-9B1-1210-R1

Test Laboratory: Comptest/Kyocera

Date: 03/09/2011

**FCC M9300 WLAN Open Right Ch11 RC**

Communication System: WLAN-2450, Frequency: 2462 MHz, Duty Cycle: 1:1

Medium: HSL2450, Medium parameters used (interpolated):  $f = 2462$  MHz;  $\sigma = 1.86$  mho/m;  $\epsilon_r = 38.1$ ;  $\rho = 1000$  kg/m<sup>3</sup>

Phantom: SAM 12, Phantom section: Right Section

**DASY4 Configuration:**

Probe: ES3DV3 - SN3078, ConvF(4.26, 4.26, 4.26), Calibrated: 7/14/2010

Sensor-Surface: 4mm (Mechanical Surface Detection),

Electronics: DAE4 Sn602, Calibrated: 7/14/2010

Measurement SW: DASY4, V4.7 Build 80

Postprocessing SW: SEMCAD, V1.8 Build 186

**Temperature:** Room T = 21.8 +/- 1 deg C, Liquid T = 22.0 +/- 1 deg C

**WLAN-2450\_Ch11 RC/Area Scan (101x121x1):** Measurement grid: dx=15mm, dy=15mm

Maximum value of SAR (interpolated) = 0.034 mW/g

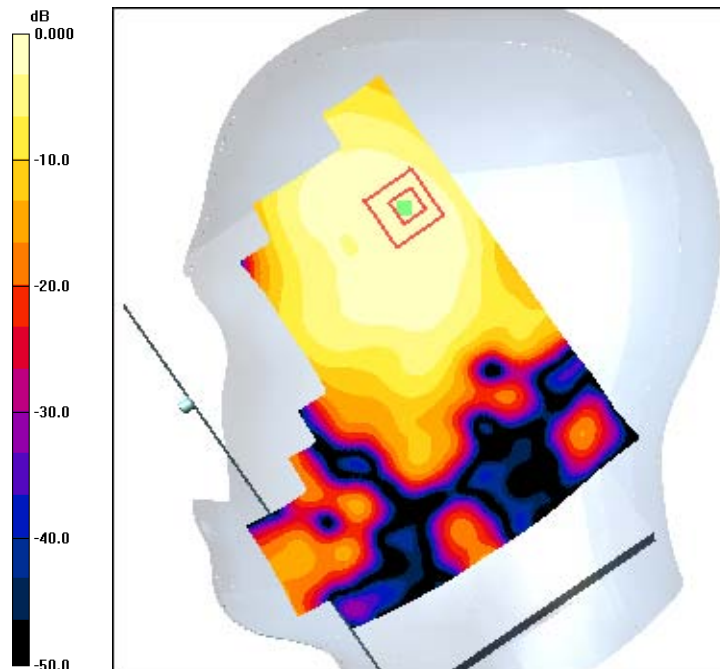
**WLAN-2450\_Ch11 RC/Zoom Scan (7x7x7)/Cube 0:** Measurement grid: dx=5mm, dy=5mm, dz=5mm

Reference Value = 1.09 V/m; Power Drift = -0.074 dB

Peak SAR (extrapolated) = 0.064 W/kg

**SAR(1 g) = 0.033 mW/g; SAR(10 g) = 0.018 mW/g**

Maximum value of SAR (measured) = 0.036 mW/g



0 dB = 0.034mW/g



Applicant:	Kyocera
FCC ID:	V65M9300
Report #:	CT-M9300-9B1-1210-R1

Test Laboratory: Comptest/Kyocera

Date: 03/09/2011

**FCC M9300 WLAN Open Right Ch11 RT**

Communication System: WLAN-2450, Frequency: 2462 MHz, Duty Cycle: 1:1

Medium: HSL2450, Medium parameters used (interpolated):  $f = 2462$  MHz;  $\sigma = 1.86$  mho/m;  $\epsilon_r = 38.1$ ;  $\rho = 1000$  kg/m<sup>3</sup>

Phantom: SAM 12, Phantom section: Right Section

**DASY4 Configuration:**

Probe: ES3DV3 - SN3078, ConvF(4.26, 4.26, 4.26), Calibrated: 7/14/2010

Sensor-Surface: 4mm (Mechanical Surface Detection),

Electronics: DAE4 Sn602, Calibrated: 7/14/2010

Measurement SW: DASY4, V4.7 Build 80

Postprocessing SW: SEMCAD, V1.8 Build 186

**Temperature:** Room T = 21.8 +/- 1 deg C, Liquid T = 22.0 +/- 1 deg C

**WLAN-2450\_Ch11 RT/Area Scan (101x121x1):** Measurement grid: dx=15mm, dy=15mm

Maximum value of SAR (interpolated) = 0.018 mW/g

**WLAN-2450\_Ch11 RT/Zoom Scan (7x7x7)/Cube 0:** Measurement grid: dx=5mm, dy=5mm, dz=5mm

Reference Value = 1.65 V/m; Power Drift = 0.163 dB

Peak SAR (extrapolated) = 0.037 W/kg

**SAR(1 g) = 0.019 mW/g; SAR(10 g) = 0.00878 mW/g**

Maximum value of SAR (measured) = 0.022 mW/g

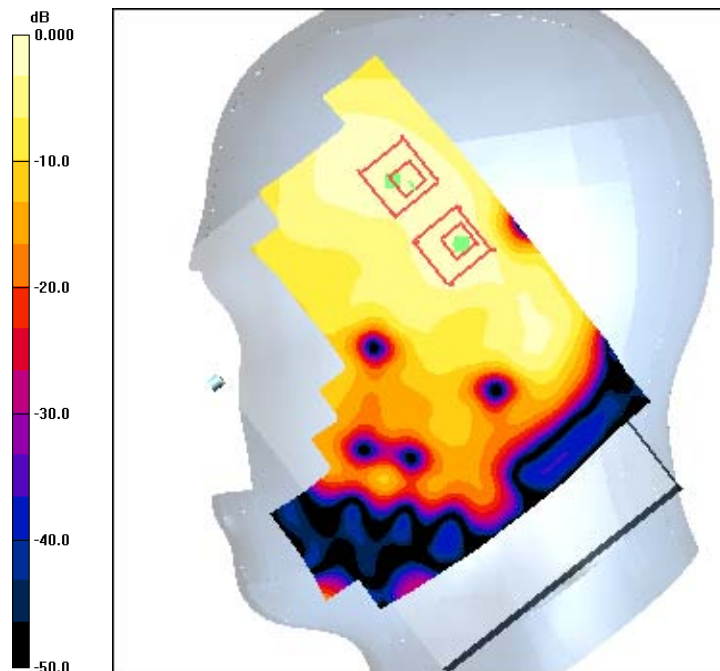
**WLAN-2450\_Ch11 RT/Zoom Scan (7x7x7)/Cube 1:** Measurement grid: dx=5mm, dy=5mm, dz=5mm

Reference Value = 1.65 V/m; Power Drift = 0.163 dB

Peak SAR (extrapolated) = 0.034 W/kg

**SAR(1 g) = 0.017 mW/g; SAR(10 g) = 0.00904 mW/g**

Maximum value of SAR (measured) = 0.019 mW/g



0 dB = 0.018mW/g