

GPS_SEL	IC0481	Active Line
L	3-5	Secondary
H	1-5	GPS

BC0SC0_SEL	SPDT接続端子	Active Line
H	1-5	BC0SC0
L	3-5	BC0SC2/BC3

BC3_SEL	IC0102端子	Active Line
H	2-5	BC3
L	3-5	BC0

BC3_SEL	BC6_SEL	EXT_ANTEN	IC0401	Active Line
L	L	H	3-12	BC0_ANT
H	H	H	3-14	BC6_ANT
H	L	L	3-10	BC1_ANT
L	L	L	1-12	BC0_EXT
L	H	L	1-14	BC6_EXT
H	L	L	1-10	BC1_EXT

VBP	VH00E	
PA_R0	PA_R1	MODE
H	L	MPK
H	H	MPK
L	-	MPK
L	L	SEM

PA_ON0	PA_ON1	PA_ON2
BC0	L	L
BC3	L	H
BC6	H	L

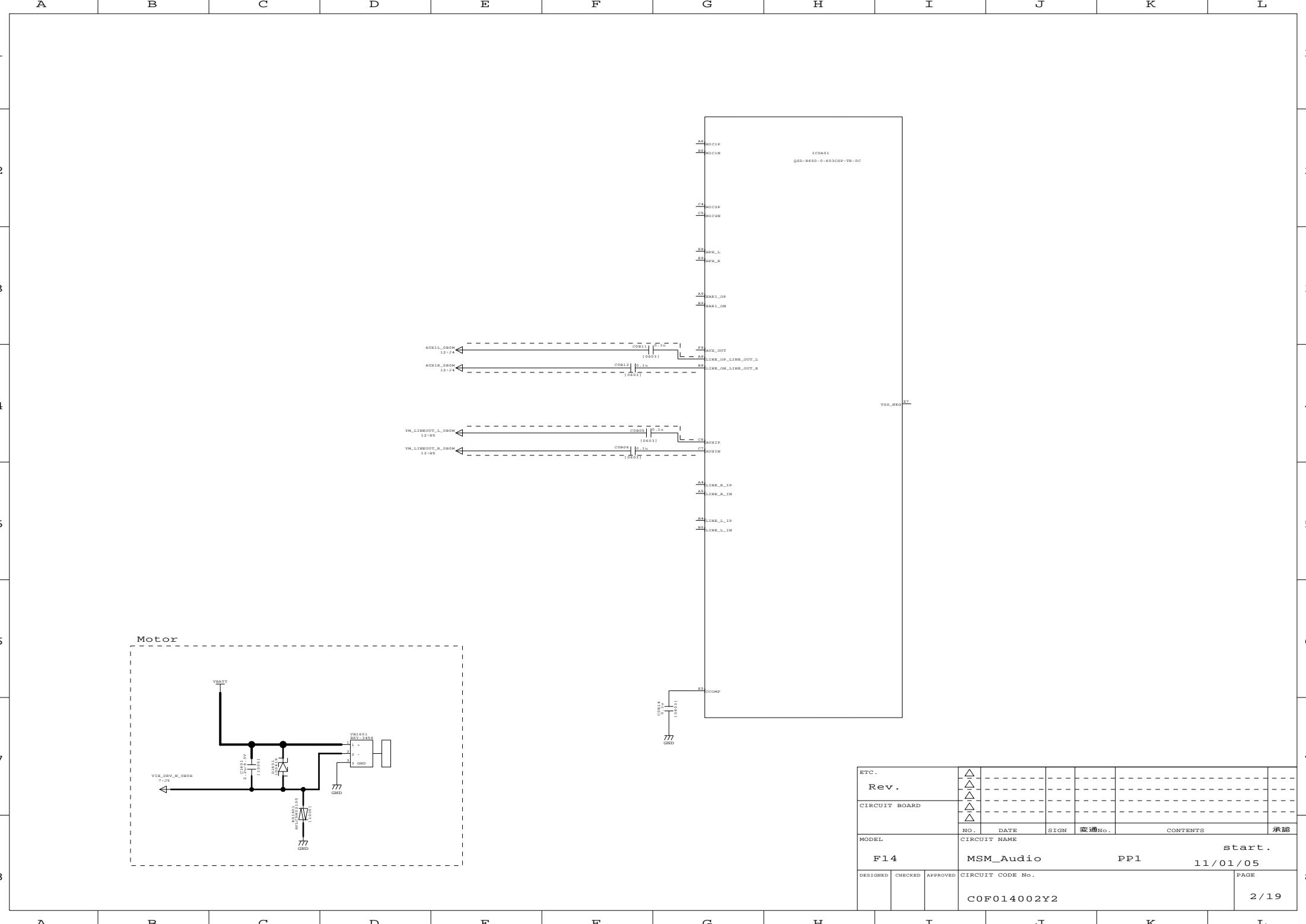
この矢先のラインは0Vラインです
この矢先のラインは電圧線(0V)です

Rev.	DATE	SIGN	変更No.	CONTENTS	承認
F14					

MODEL: F14 CIRCUIT NAME: RF_BLOCK_PP1 start: 11/01/05

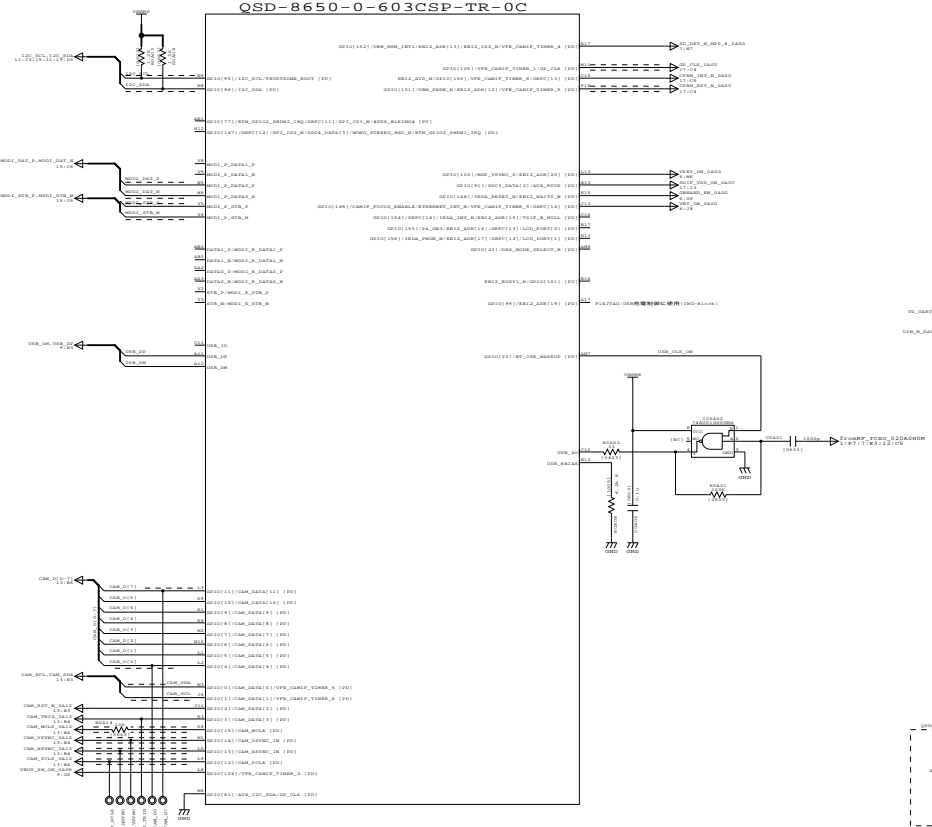
DESIGNED: CHECKED: APPROVED: CIRCUIT CODE NO. PAGE: 1/19

COF014001Y2

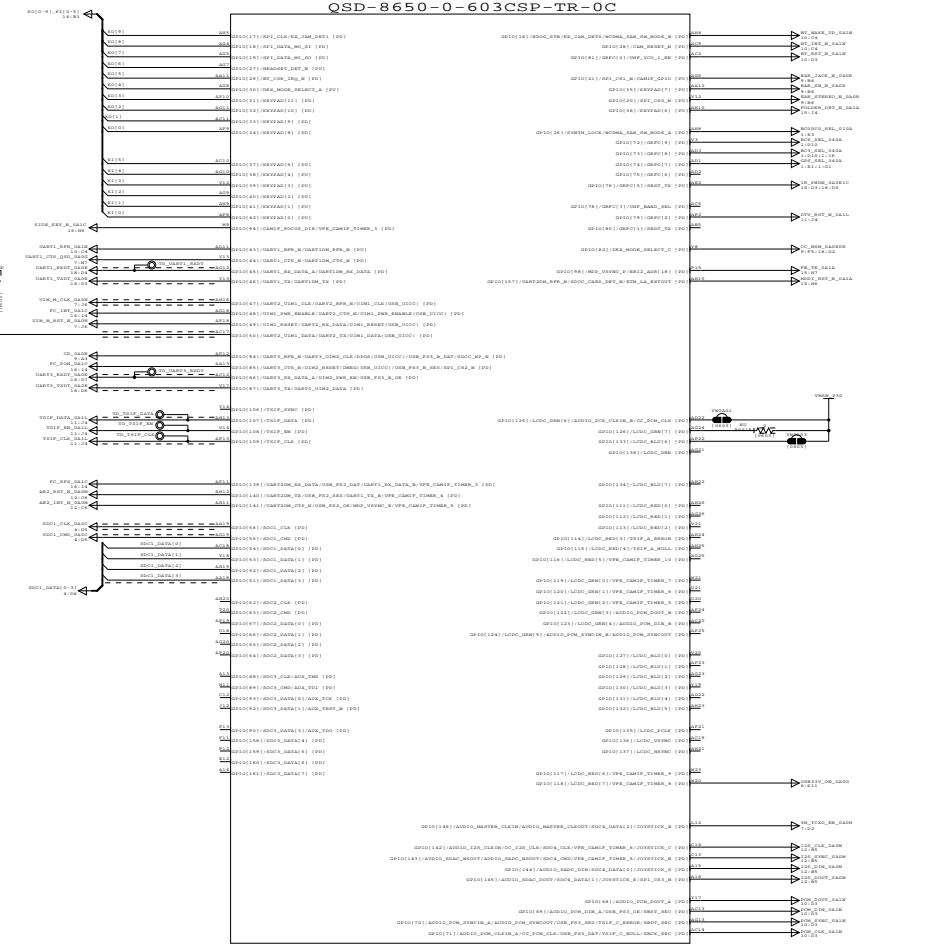


Etc.		△					
Rev.		△					
CIRCUIT BOARD		△					
		△					
MODEL		NO.	DATE	SIGN	変通No.	CONTENTS	承認
F14		MSM_Audio		PP1	start.		
				11/01/05			
DESIGNED	CHECKED	APPROVED	CIRCUIT CODE No.			PAGE	
			C0F014002Y2			2 / 19	

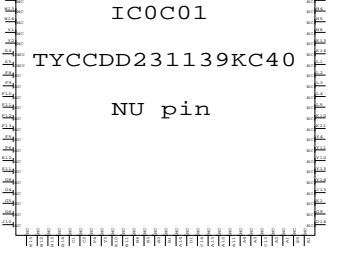
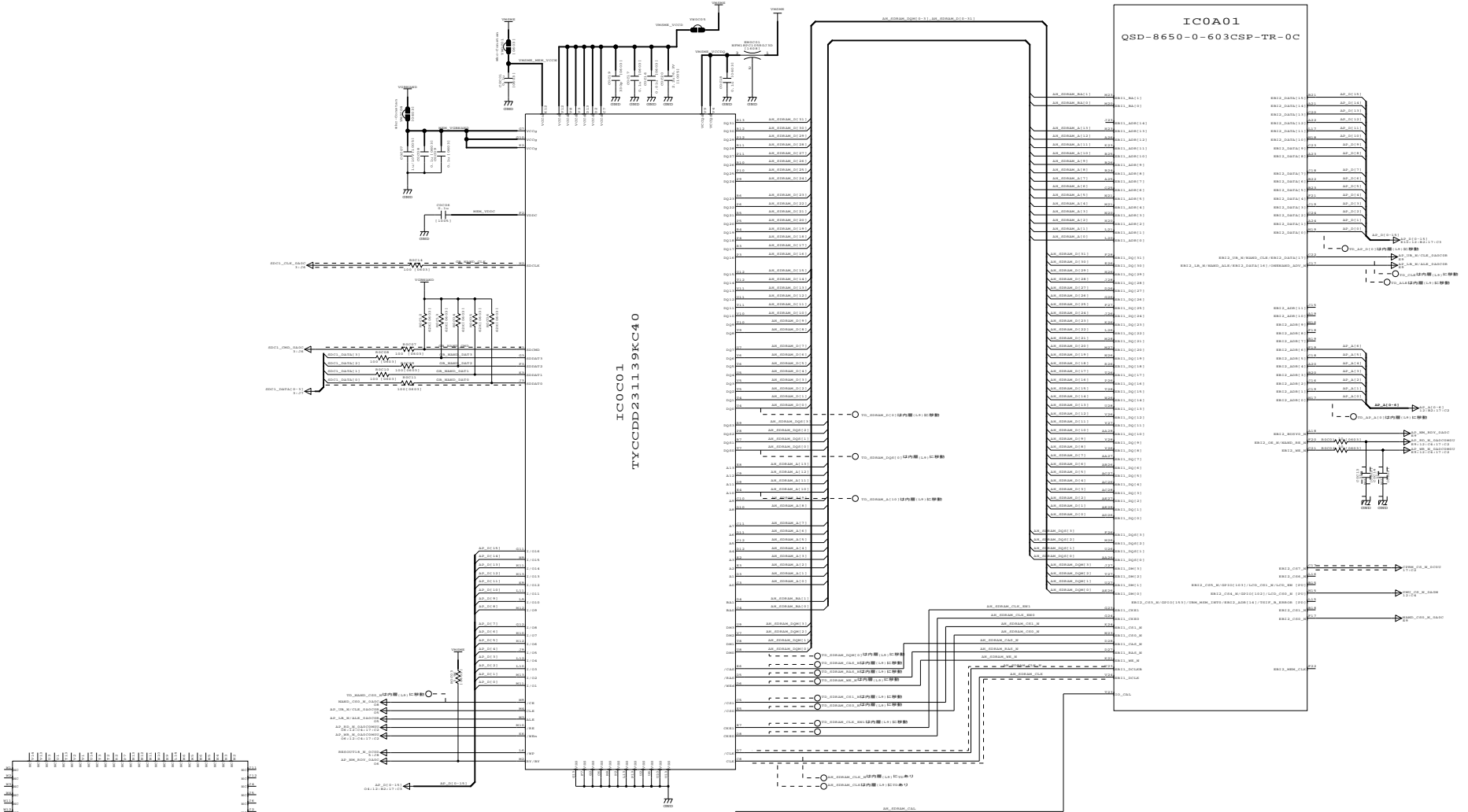
IC0A01
QSD-8650-0-603CSP-TR-0C



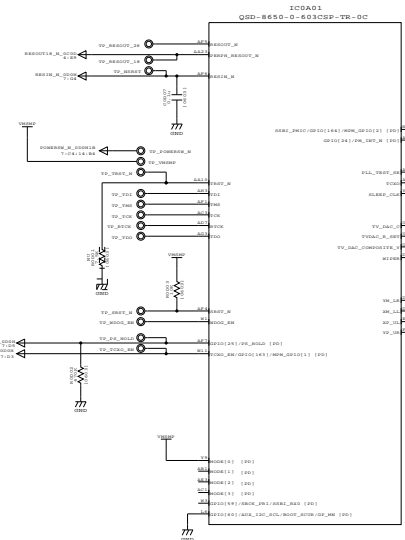
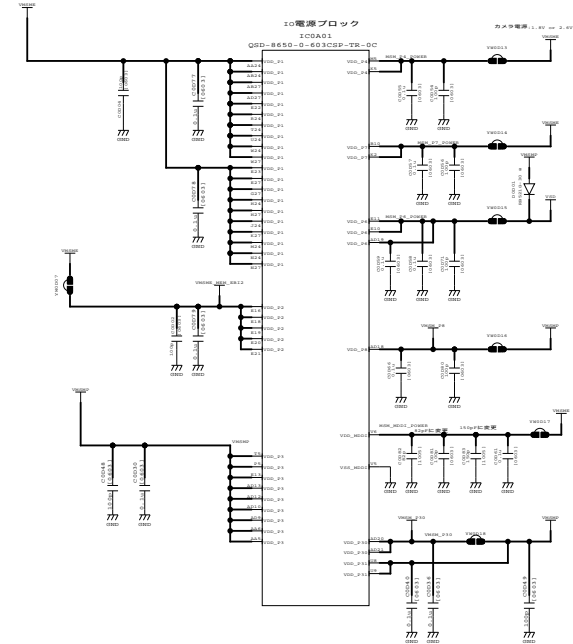
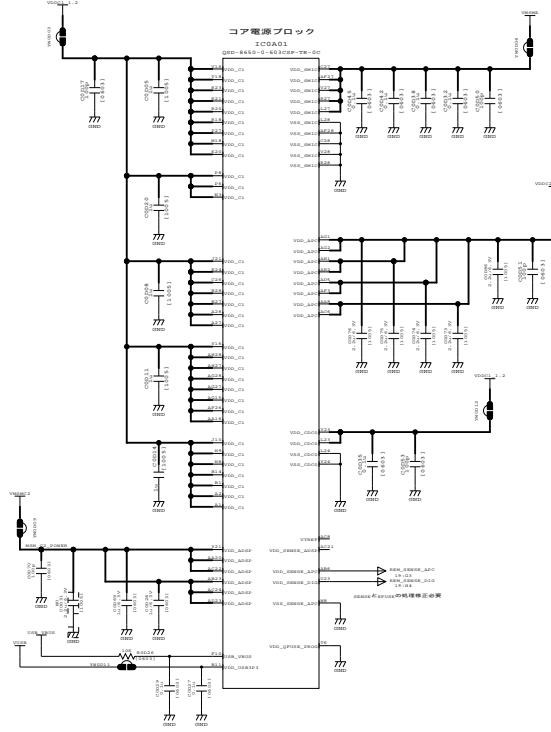
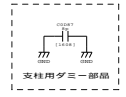
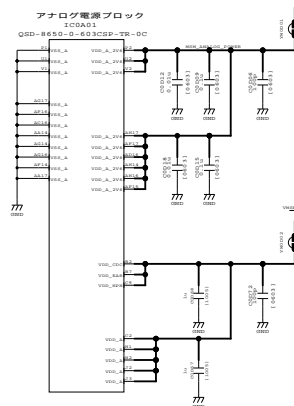
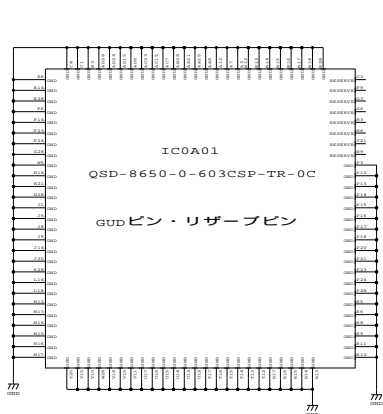
IC0A01
QSD-8650-0-603CSP-TR-0C



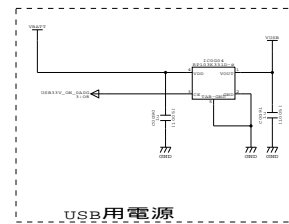
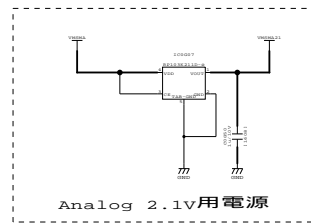
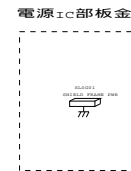
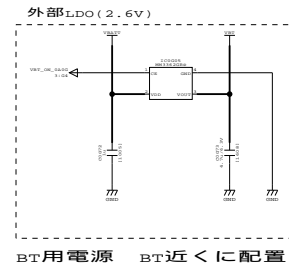
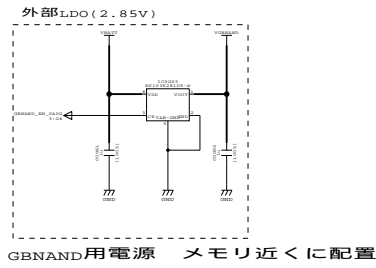
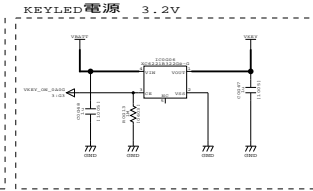
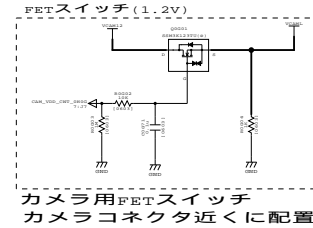
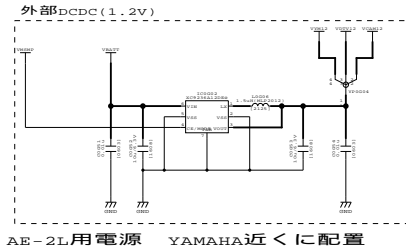
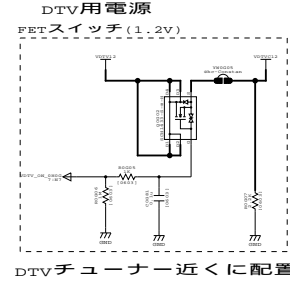
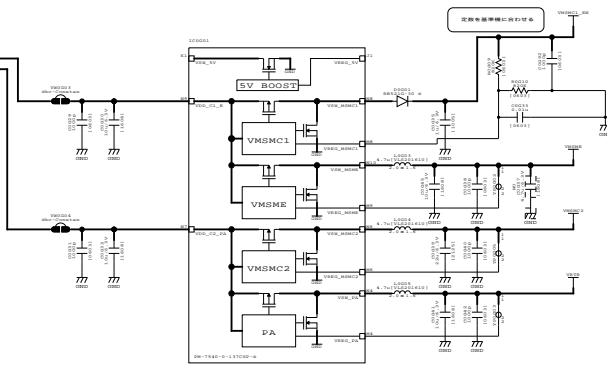
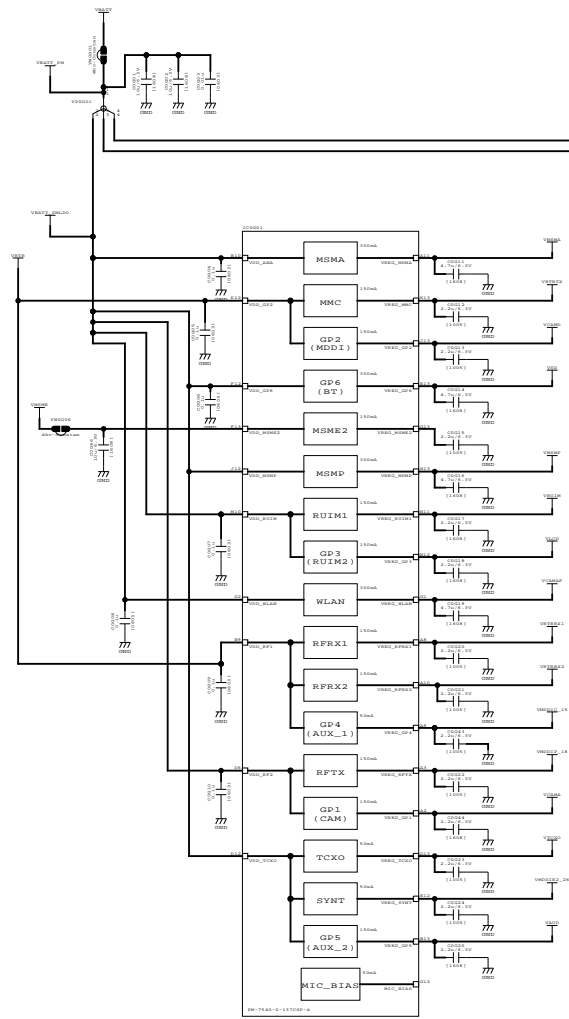
Rev. 0		NO.		DATE	SIGN	審核No.	CONTENTS	頁碼
F14		QSD GPIO		PPI		start. 11/01/05		
DECLINED	CHECKED	APPROVED	CIRCUIT CODE NO.		PAGE			
			COP014003Y2		3/19			



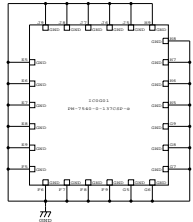
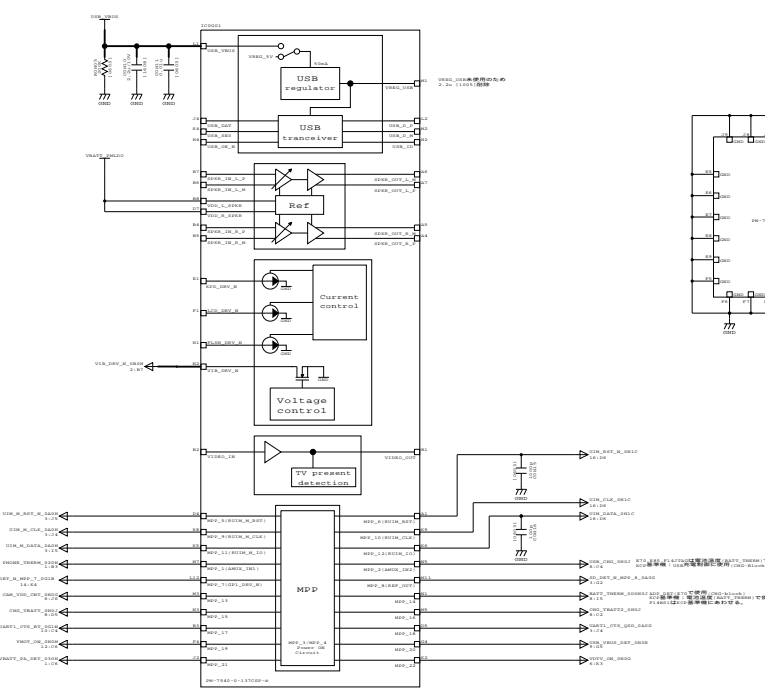
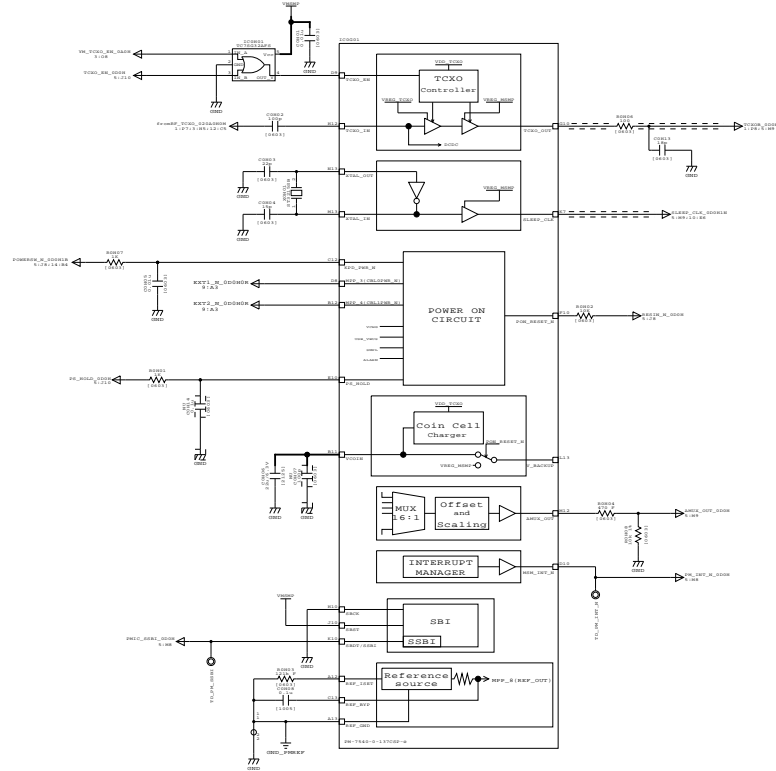
Rev. 0					
CIRCUIT BOARD					
NO.	DATE	SIGN	審核No.	CONTENTS	承認
F14		MSM	EBI	PPI	start. 11/01/05
DESIGNED	CHECKED	APPROVED	CIRCUIT CODE NO.		PAGE
			COP014004Y2		4/19



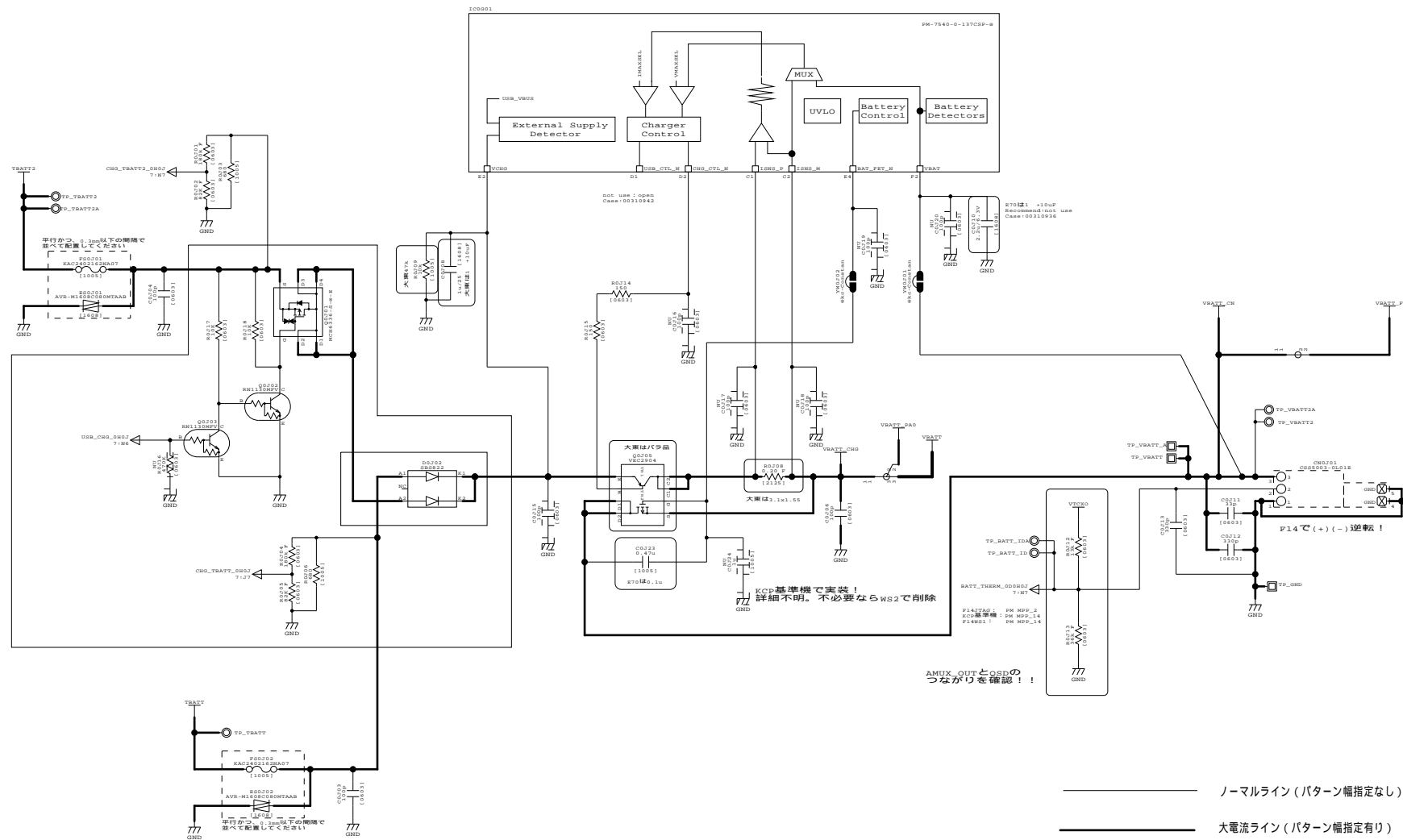
REV.	Rev. @kc-zuwa								
CIRCUIT BOARD									
MODEL	F14	QSD POWER	PPI	start.	11/01/05				
DESIGNED	CHECKED	APPROVED	CIRCUIT CODE NO.	DATE	SIGN	変更No.	CONTENTS	承認	手続
			COP014005Y2						5/19



Rev.	▲					
CIRCUIT BOARD	▲					
NO.	DATE	SIGN	変更No.	CONTENTS	承認	
F14				PM7540_POWER PP1	start.	11/01/05
DESIGNED	CHECKED	APPROVED	CIRCUIT CODE NO.		PAGE	
			COP014006Y2		6/19	



NO.	DATE	SIGN	承認NO.	CONTENTS	承認
Rev.					
CIRCUIT BOARD					
MODEL	F14	CIRCUIT NAME	PM7540_IF	start.	11/01/05
DESIGNED	CHECKED	APPROVED	CIRCUIT CODE NO.	DATE	PAGE
			COP014007Y2		7/19



E.T.C.											
Rev.		△				△		△		△	
CIRCUIT BOARD		△				△		△		△	
MODEL		NO.		DATE		SIGN		変通No.		CONTENTS	
F14		PM7540_CHG		PP1						start. 11/01/05	
DESIGNED	CHECKED	APPROVED	CIRCUIT CODE No.				PAGE				
			C0F014008Y2				8 / 19				

EXT I/F

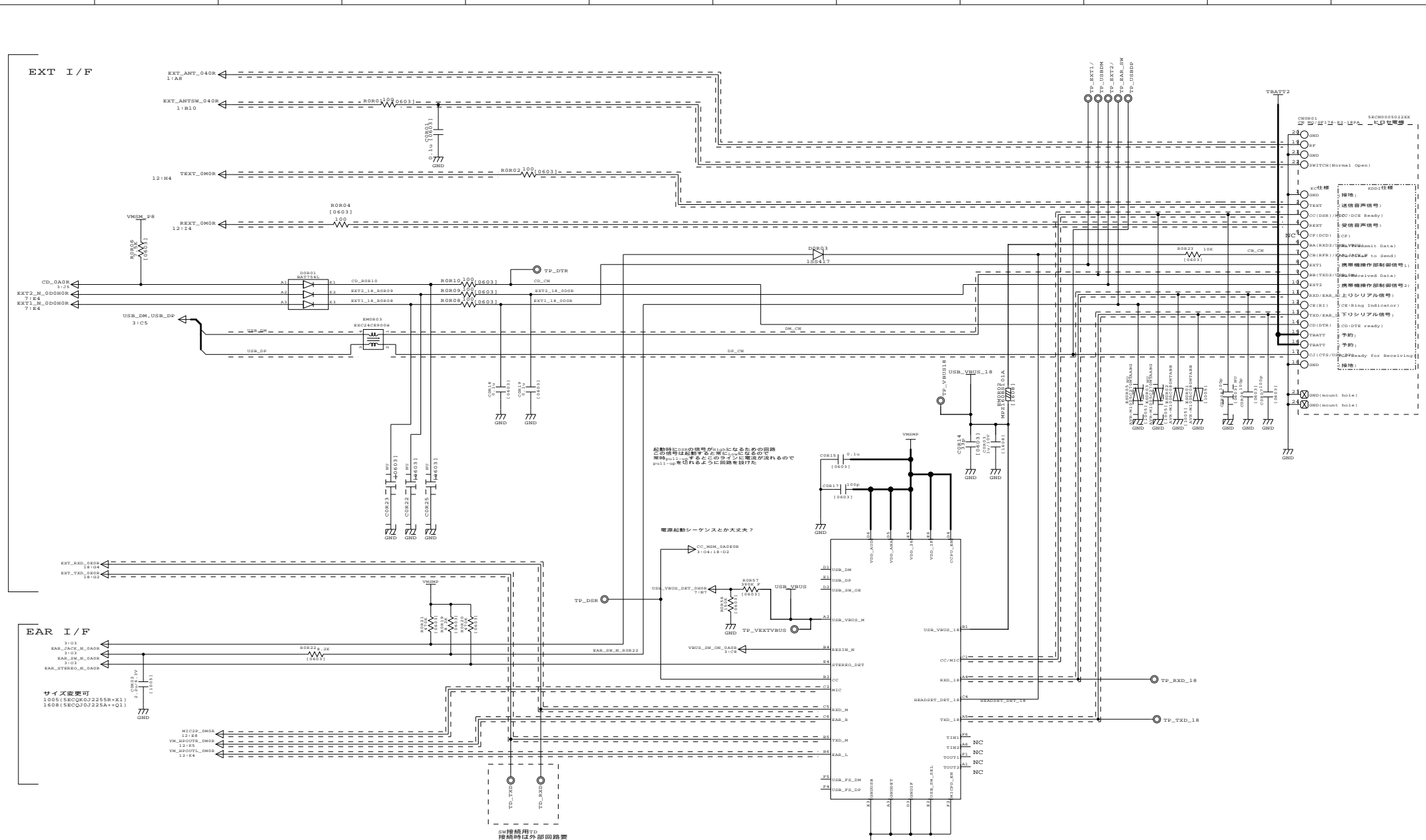
EAR I/F

サイズ変更可
1005 (SECQKQJ2255R+X1)
1608 (SECQJQJ225A+Q1)

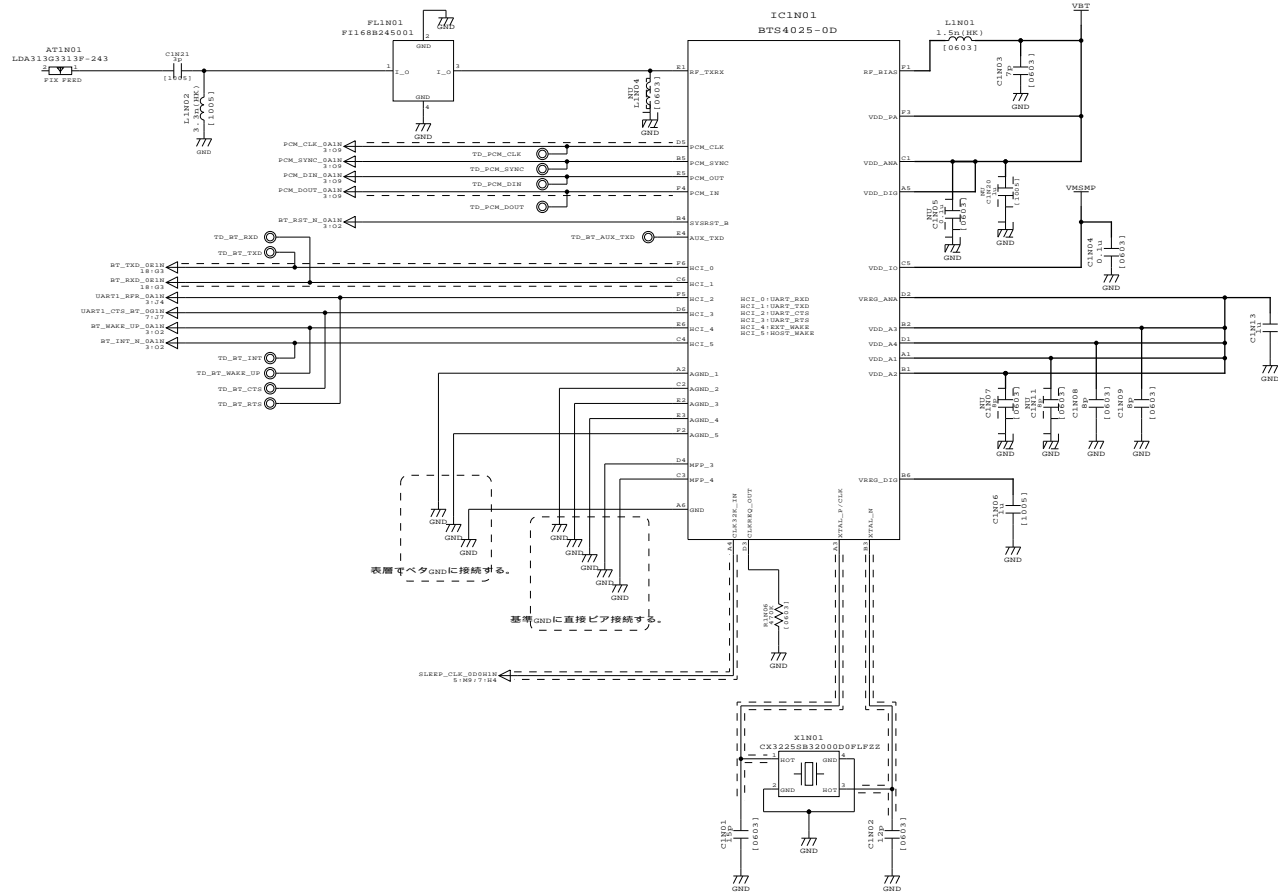
20接脚用D
接続時は外部回路要

起動時にUSBの信号がHighになるための回路
この信号は起動する電源に依存する0Vであるので
常時pull-upすることでこのラインに電圧が流れるので
pull-upを切れるように回路を設けた

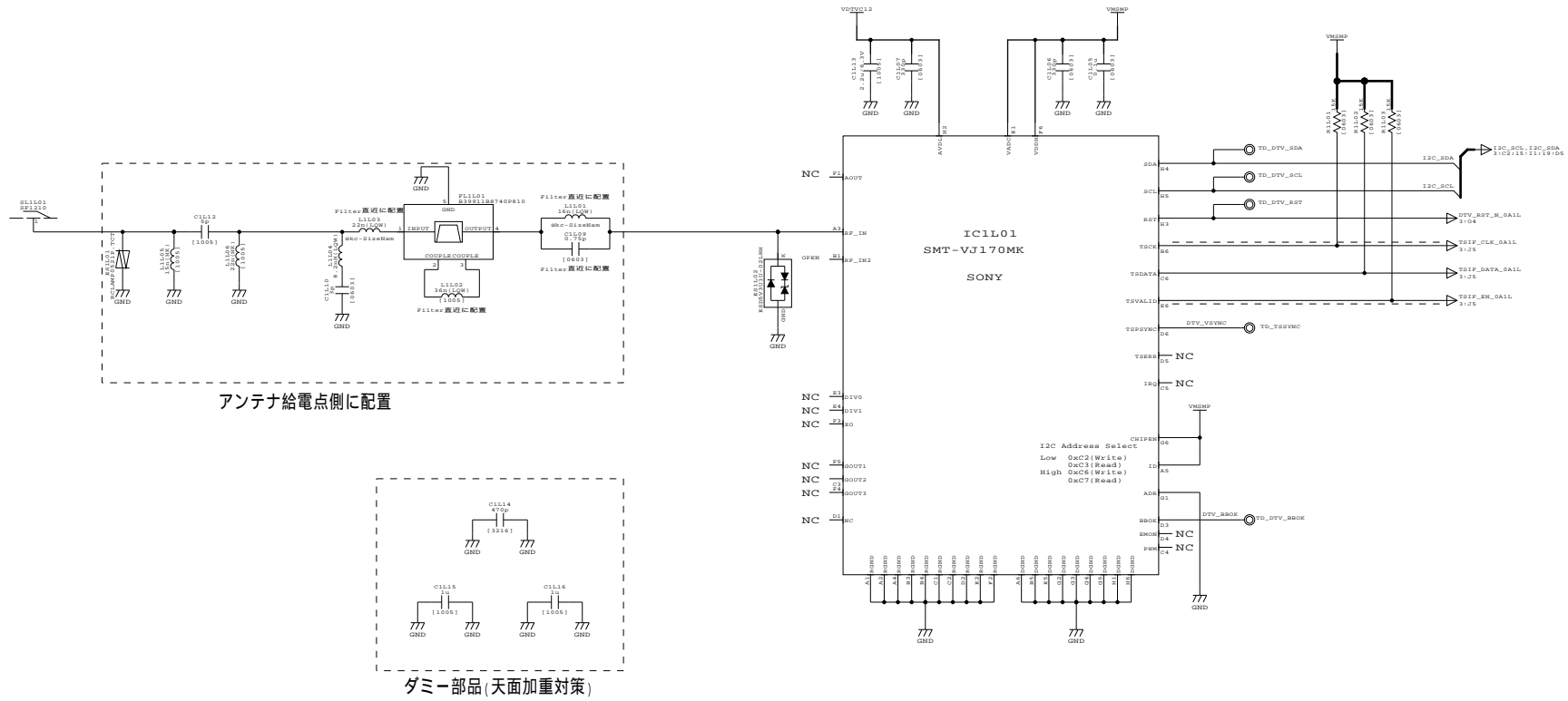
電源起動シーケンスとか大丈夫?



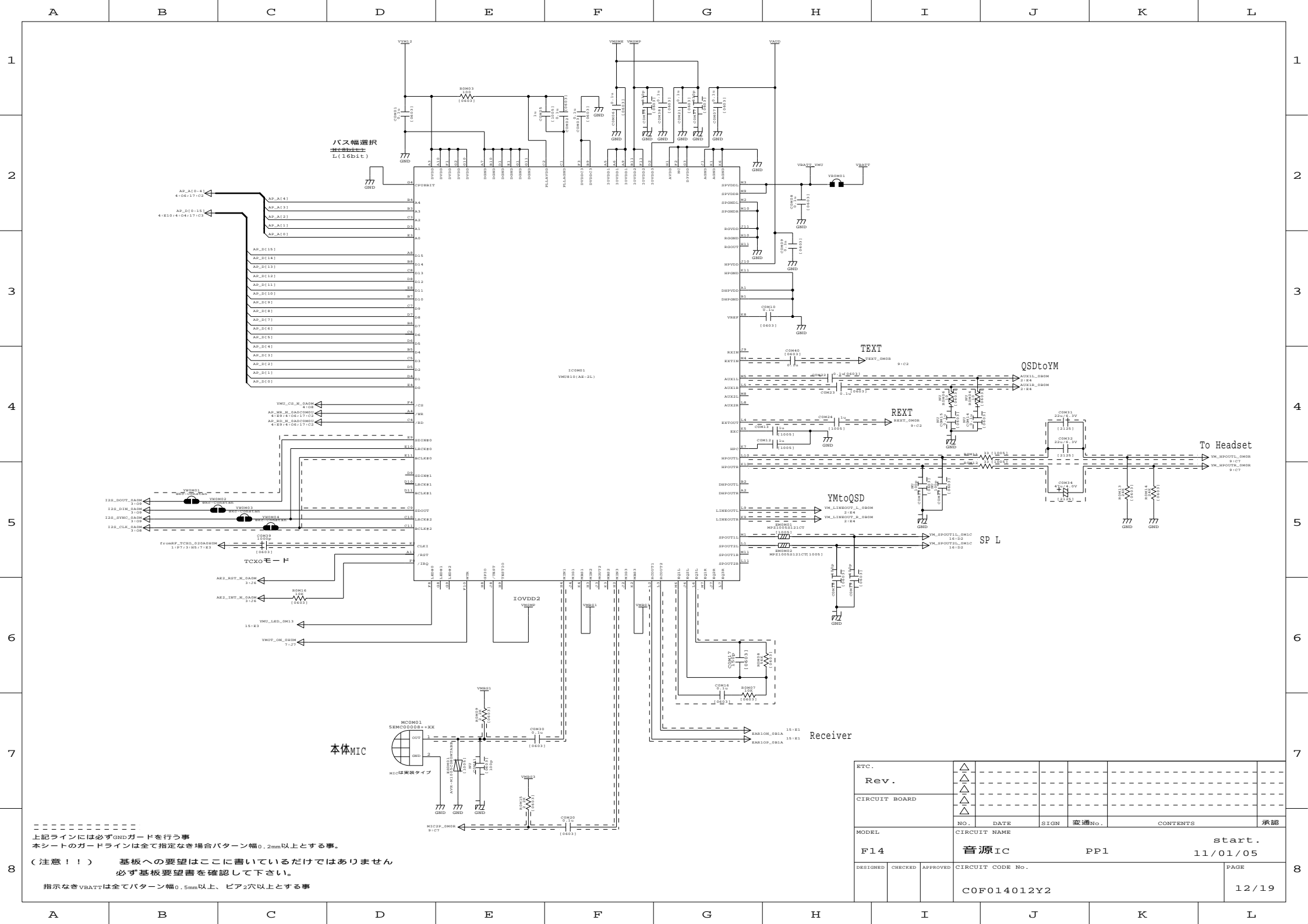
BTC.	△					
Rev.	△					
CIRCUIT BOARD	△					
	△					
MODEL	F14	CIRCUIT NAME	EXT_I/F	start.	11/01/05	
DESIGNED	CHECKED	APPROVED	CIRCUIT CODE No.	C0F014009Y2	PAGE	9/19



E.T.C.		△						
Rev.		△						
CIRCUIT BOARD		△						
		△						
		△						
MODEL		NO.	DATE	SIGN	変通No.	CONTENTS	承認	
F14		CIRCUIT NAME				Blue Tooth PP1	start.	11/01/05
DESIGNED	CHECKED	APPROVED	CIRCUIT CODE No.				PAGE	
			C0F014010Y2				10/19	



B7C.		△					
Rev.		△					
CIRCUIT BOARD		△					
		△					
		△					
		△					
MODEL		NO.		DATE	SIGN	変通No.	承認
F14		DTV		PP1		start. 11/01/05	
DESIGNED	CHECKED	APPROVED	CIRCUIT CODE No.		PAGE		
			C0F014011Y2		11/19		



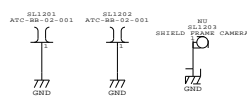
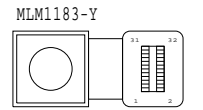
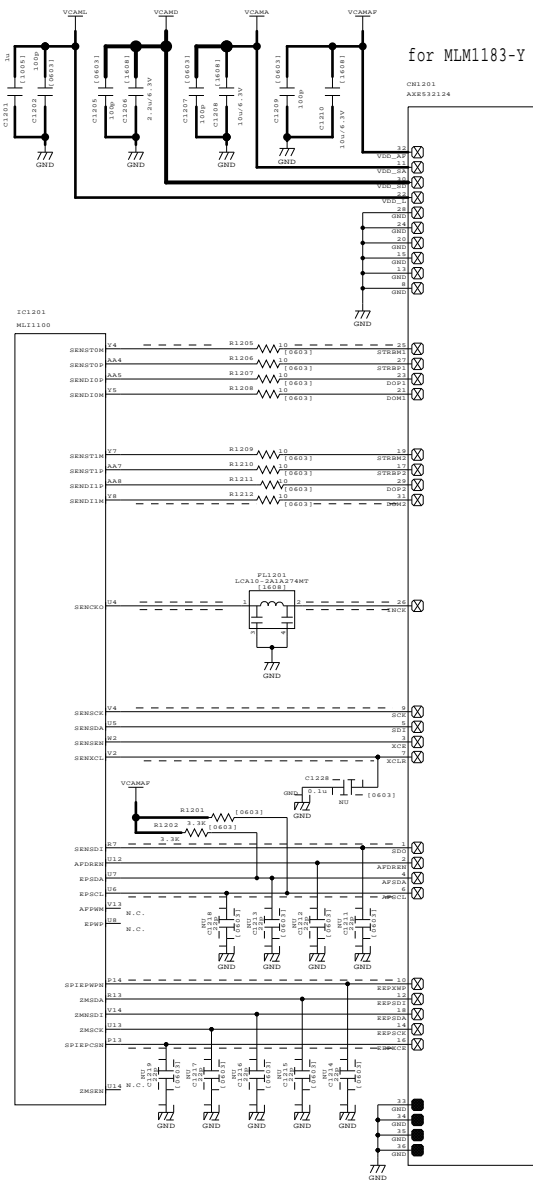
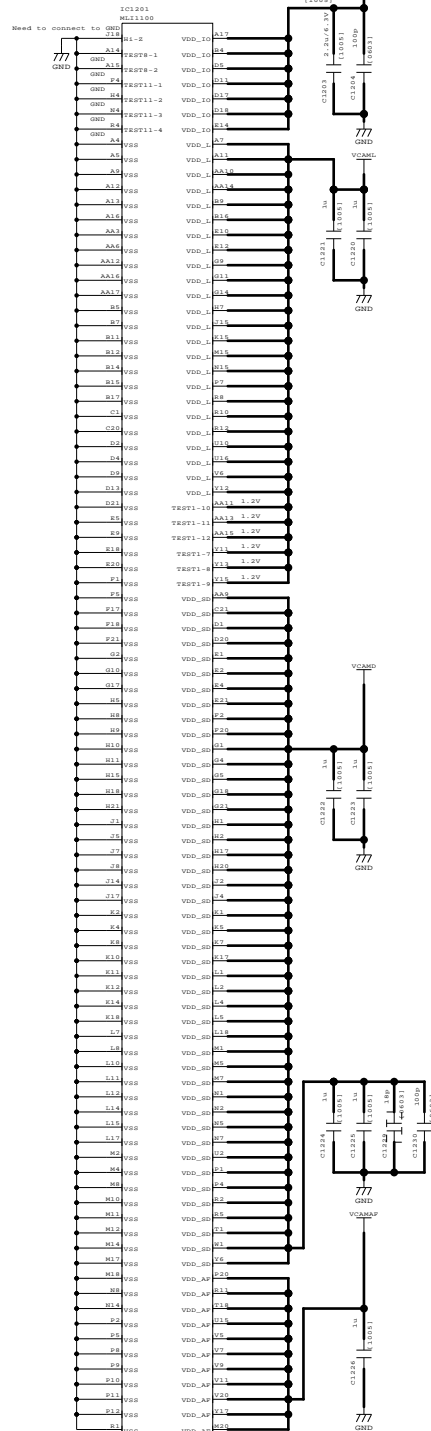
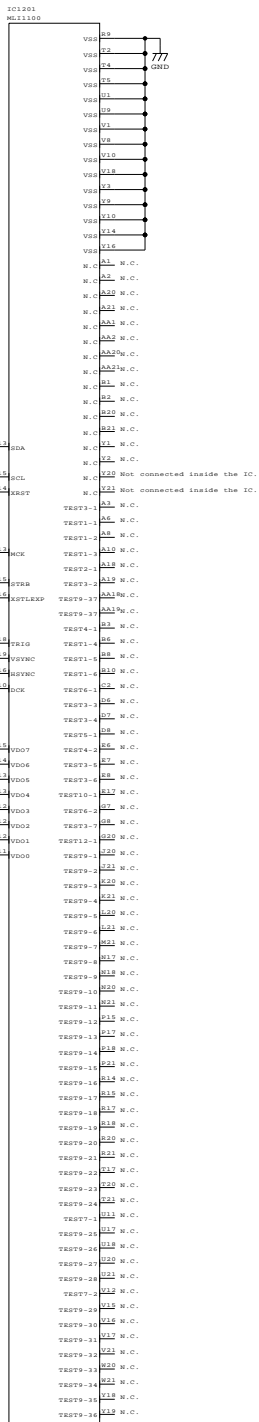
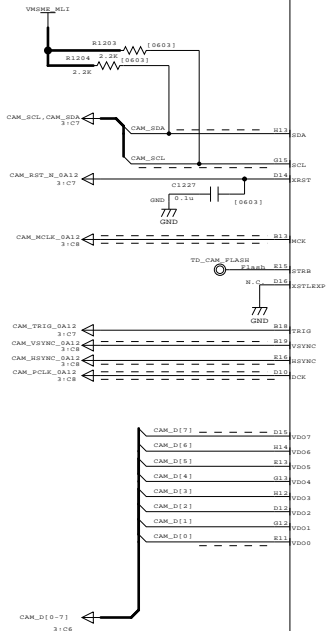
 上記ラインには必ずGNDガードを行う事
 本シートのガードラインは全て指定なき場合パターン幅0.2mm以上とする事。

(注意！！) 基板への要望はここに書いているだけではありません
 必ず基板要望書を確認して下さい。

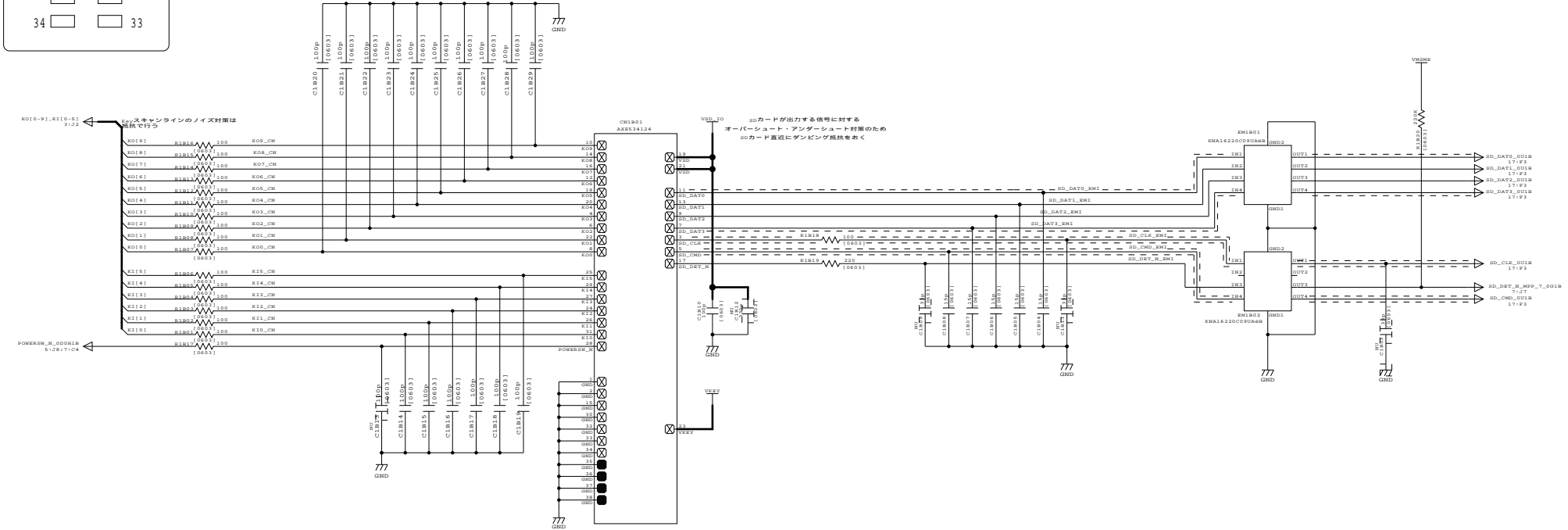
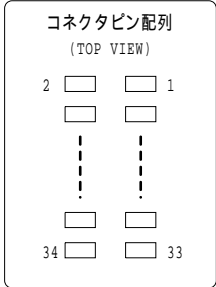
指示なきVBATTは全てパターン幅0.5mm以上、ビア2穴以上とする事

BTC.	△					
Rev.	△					
CIRCUIT BOARD	△					
	△					
MODEL	F14	CIRCUIT NAME	音源IC	PP1	start.	11/01/05
DESIGNED	CHECKED	APPROVED	CIRCUIT CODE No.		PAGE	12/19
C0F014012Y2						

このページのシンボルは「12」です。



BTC.	Rev.						
CIRCUIT BOARD							
MODEL	F14	CIRCUIT NAME	CAMERA_CONNECTOR	PP1	start.	11/01/05	
DESIGNED	CHECKED	APPROVED	CIRCUIT CODE No.		PAGE	13/19	
			C0F014013Y2				



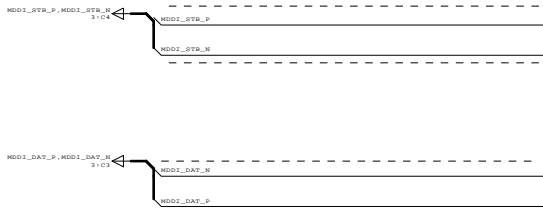
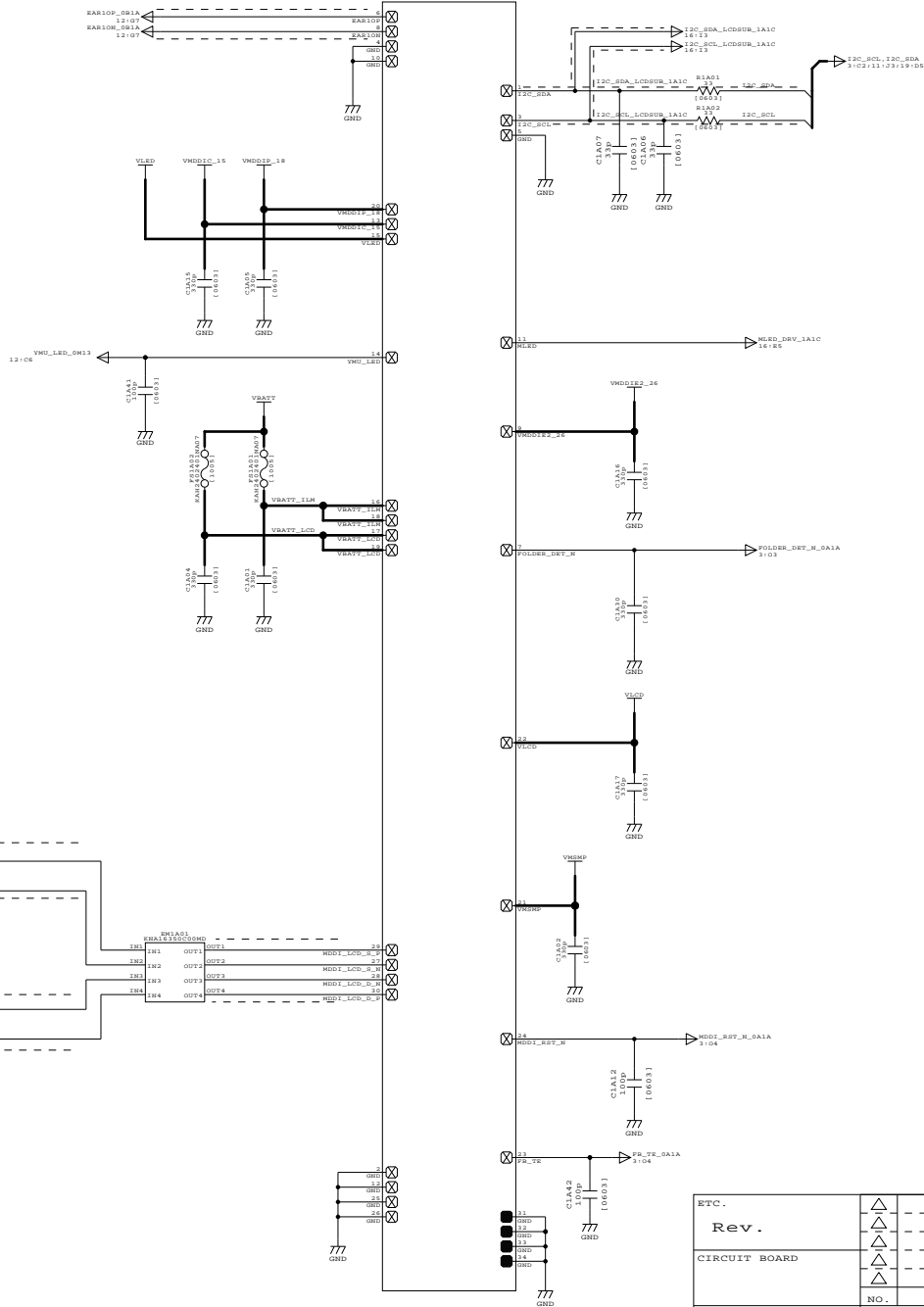
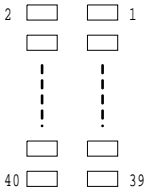
ETC.	△					
Rev.	△					
CIRCUIT BOARD	△					
	△					
	△					
MODEL	CIRCUIT NAME		NO.	DATE	SIGN	変通No.
F14	KEY_CONNECTOR PP1					
DESIGNED	CHECKED	APPROVED	CIRCUIT CODE No.			PAGE
			C0F014014Y2			14/19

1
2
3
4
5
6
7
8

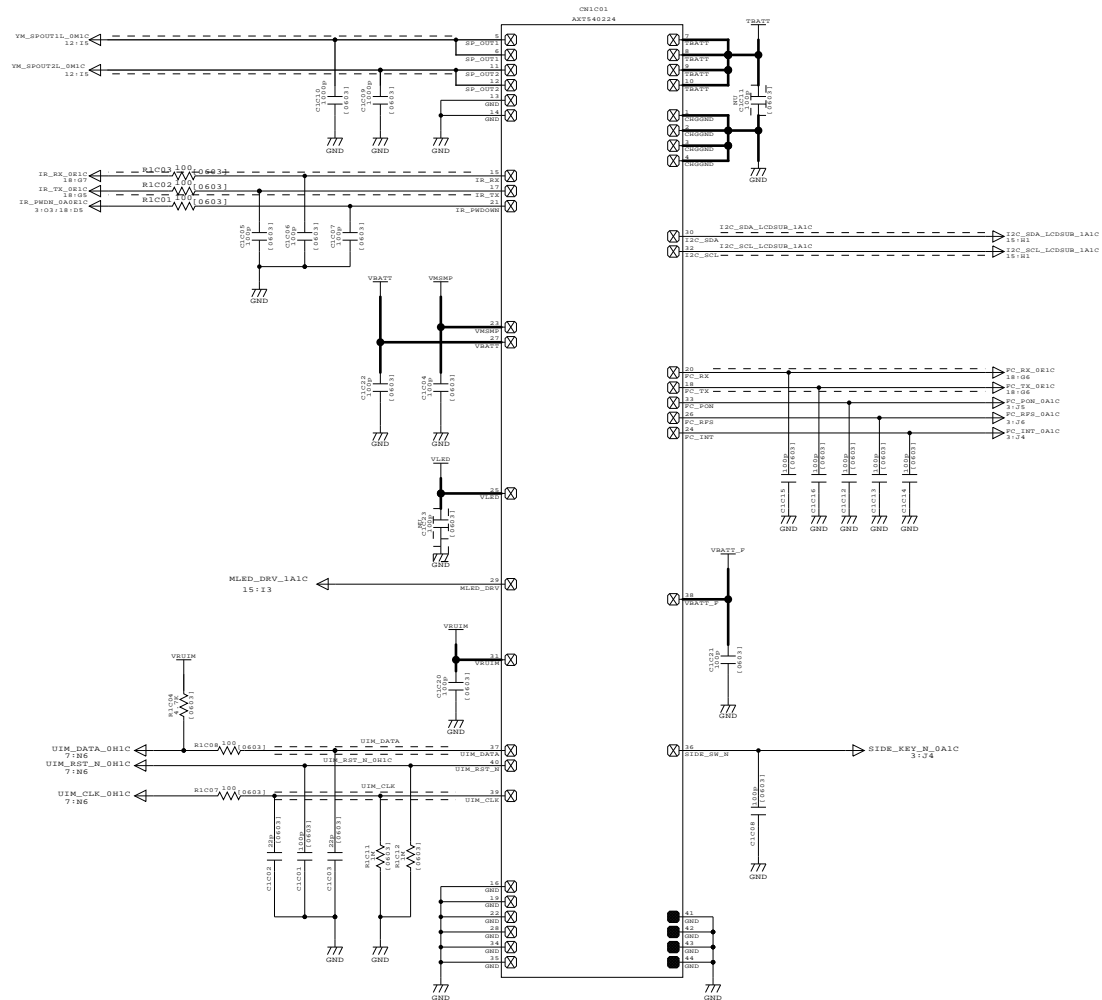
プラグ To hinge FPC

081A01
SM1010(0.6)-30DP-0.4V(51)

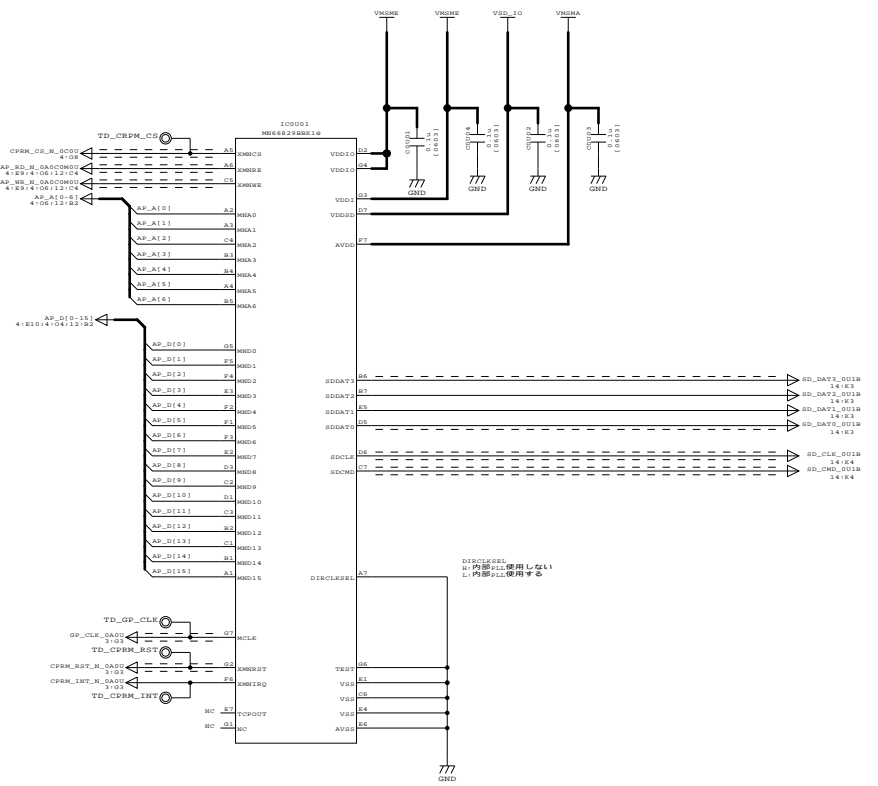
コネクタピン配列 (TOP VIEW)



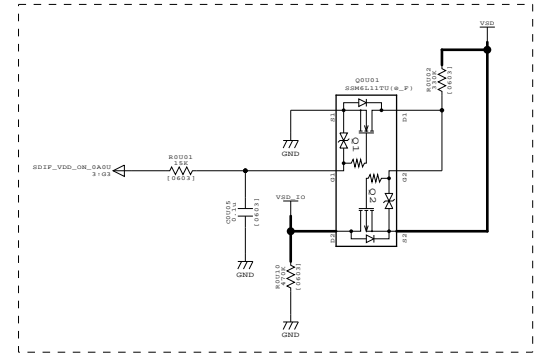
B.T.C.		△						
Rev.		△						
CIRCUIT BOARD		△						
		△						
		△						
MODEL		NO.	DATE	SIGN	変通No.	CONTENTS	承認	
F14		HINGE_CONNECTOR PP1					start.	
							11/01/05	
DESIGNED	CHECKED	APPROVED	CIRCUIT CODE No.				PAGE	
			C0F014015Y2				15/19	



B.T.C.		△					
Rev.		△					
CIRCUIT BOARD		△					
		△					
		△					
		△					
MODEL		NO.	DATE	SIGN	変通No.	CONTENTS	承認
F14		CIRCUIT NAME			SUB_CONNECTOR PP1		start. 11/01/05
DESIGNED	CHECKED	APPROVED	CIRCUIT CODE No.				PAGE
			C0F014016Y2				16/19



FETスイッチ (2.85V)

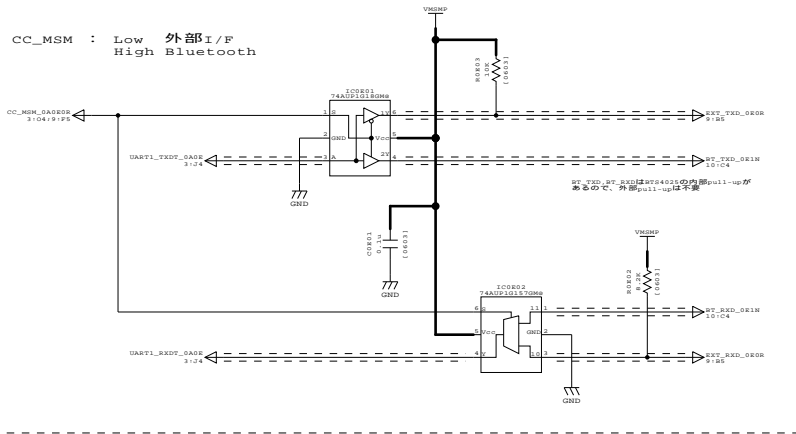


SD用FETスイッチ
CPRM近くに配置

ETC.			△						
Rev.			△						
CIRCUIT BOARD			△						
			△						
			△						
MODEL			NO.	DATE	SIGN	変通No.	CONTENTS	承認	
F14									
DESIGNED			CHECKED	APPROVED	CIRCUIT NAME				
					CPRM PP1				
					start. 11/01/05				
					CIRCUIT CODE No.				PAGE
					C0F014017Y2				17/19

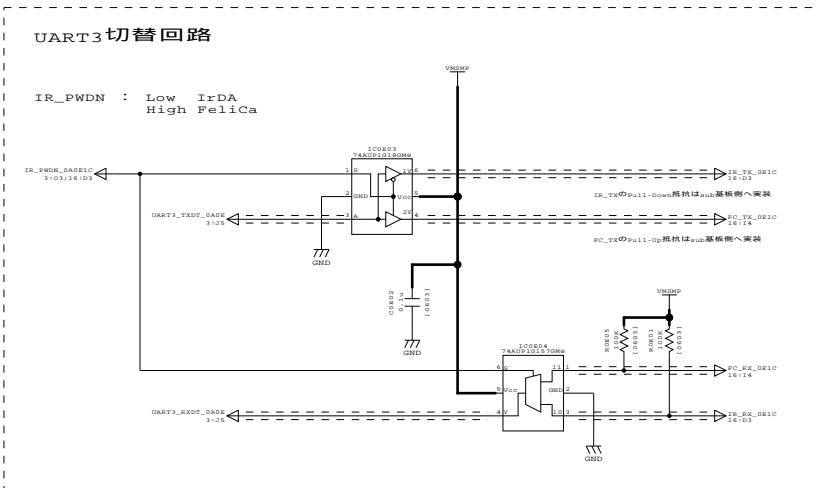
UART1切替回路

CC_MSM : Low 外部I/F
High Bluetooth

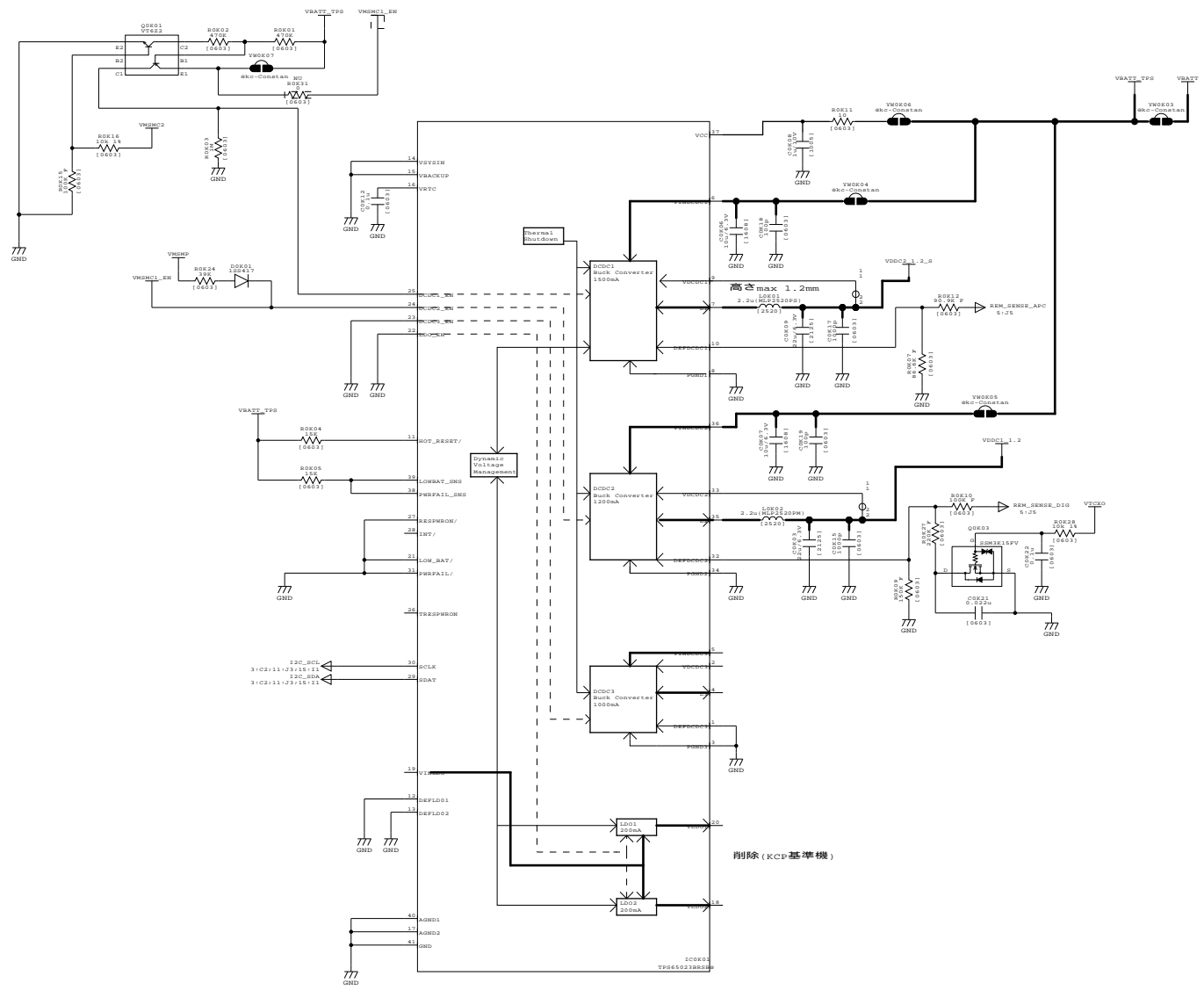


UART3切替回路

IR_PWDN : Low IrDA
High FeliCa



ETC.	△					
Rev.	△					
	△					
CIRCUIT BOARD	△					
	△					
	△					
MODEL	NO.	DATE	SIGN	変通No.	CONTENTS	承認
F14					UART PP1	start. 11/01/05
DESIGNED	CHECKED	APPROVED	CIRCUIT CODE No.			PAGE
			C0F014018Y2			18/19



PM_Powerページに移動

Analog 2.1V用電源

削除 (KCP基準機)

Etc.		△	△	△	△	△	△	△	△	△	△	△	△	△
Rev.		△	△	△	△	△	△	△	△	△	△	△	△	△
CIRCUIT BOARD		△	△	△	△	△	△	△	△	△	△	△	△	△
MODEL		NO.	DATE	SIGN	変更No.	CONTENTS			承認					
F14		TI_POWER_IC PP1			start.			11/01/05						
DESIGNED	CHECKED	APPROVED	CIRCUIT CODE No.			PAGE								
			C0F014019Y2			19/19								