



Part-1 Power Density Characterization Report

Report No. : PFBFJZ-WTW-P22110126

Applicant : Kyocera Corporation % Kyocera International, Inc.

Address : 8611 Balboa Avenue, San Diego, CA 92123

Product : Smartphone

FCC ID : V65E7200

Brand : Kyocera

Model No. : E7200

FCC Rule Part : CFR §2.1093

Standards : IEC TR 63170:2018,
KDB 865664 D02 v01r02, KDB 447498 D01 v06

Sample Received Date : Dec. 07, 2022

Date of Testing : Jan. 31, 2023 ~ Feb. 02, 2023

Lab Address : No. 47-2, 14th Ling, Chia Pau Vil., Lin Kou Dist., New Taipei City, Taiwan

Test Location : No. 19, Hwa Ya 2nd Rd., Wen Hwa Vil., Kwei Shan Dist., Taoyuan City, Taiwan

CERTIFICATION: The above equipment have been tested by **Bureau Veritas Consumer Products Services (H.K.) Ltd., Taoyuan Branch – Lin Kou Laboratories**, and found compliance with the requirement of the above standards. The test record, data evaluation & Equipment Under Test (EUT) configurations represented herein are true and accurate accounts of the measurements of the sample’s characteristics under the conditions specified in this report. It should not be reproduced except in full, without the written approval of our laboratory. The client should not use it to claim product certification, approval, or endorsement by TAF or any government agencies.

Prepared By : Vera Huang
Vera Huang / Specialist

Approved By : Gordon Lin
Gordon Lin / Manager



This report is governed by, and incorporates by reference, the Conditions of Testing as posted at the date of issuance of this report at <http://www.bureauveritas.com/home/about-us/our-business/cps/about-us/terms-conditions/> and is intended for your exclusive use. Any copying or replication of this report to or for any other person or entity, or use of our name or trademark, is permitted only with our prior written permission. This report sets forth our findings solely with respect to the test samples identified herein. The results set forth in this report are not indicative or representative of the quality or characteristics of the lot from which a test sample was taken or any similar or identical product unless specifically and expressly noted. Our report includes all of the tests requested by you and the results thereof based upon the information that you provided to us. Measurement uncertainty is only provided upon request for accredited tests. Statements of conformity are based on simple acceptance criteria without taking measurement uncertainty into account, unless otherwise requested in writing. You have 60 days from date of issuance of this report to notify us of any material error or omission caused by our negligence or if you require measurement uncertainty; provided, however, that such notice shall be in writing and shall specifically address the issue you wish to raise. A failure to raise such issue within the prescribed time shall constitute your unqualified acceptance of the completeness of this report, the tests conducted and the correctness of the report contents.

Table of Contents

Release Control Record	3
1. Summary of Maximum Value	4
2. Description of Equipment Under Test	5
3. Power Density Measurement System	6
3.1 Definition of Power Density	6
3.2 SPEAG DASY6 System	6
3.2.1 Robot	7
3.2.2 EUmWV4 mm-Wave Probe	7
3.2.3 Data Acquisition Electronics (DAE)	8
3.2.4 System Verification Sources	9
3.3 Power Density System Verification	10
3.4 Power Density Measurement Procedure	11
3.4.1 Computation of the Electric Field Polarization Ellipse	12
3.4.2 Total Field and Power Flux Density Reconstruction	13
3.4.3 Power Flux Density Averaging	13
4. Power Density Measurement Evaluation	14
4.1 EUT Configuration and Setting	14
4.2 EUT Testing Position	14
4.3 System Verification	14
4.4 Power Density Testing Results	15
4.4.1 Test Considerations	15
4.4.2 Power Density Test Results	15
4.4.3 Simultaneous Multi-band Transmission Evaluation	15
5. Calibration of Test Equipment	16
6. Measurement Uncertainty	17
7. Information on the Testing Laboratories	18
Appendix A. Plots of System Verification	
Appendix B. Plots of Power Density Measurement	
Appendix C. System Verification	
Appendix D. Power Density Test Result	
Appendix E. Analysis of Simultaneous Transmission	
Appendix Z. Calibration Certificate for Probe and System Verification Source	

1. Summary of Maximum Value

Mode	Highest Averaged Power Density Tested at 2 mm [W/m ²]
5G NR n260	2.88
5G NR n261	2.21

Simultaneous Transmission	Highest Averaged Power Density Tested at 2 mm [W/m ²]
5G NR (FR2) PD + WLAN6G PD	5.58

Simultaneous Transmission	Total Exposure Ratio	
	Highest SAR1g	Highest SAR10g
5G NR (FR2) + WLAN+BT	0.71	0.50

Note:

1. According to 47 CFR part 2.1093, the MPE limits specified in part 1.1310 apply to portable devices that transmit at frequencies above 6 GHz. The localized power density limit for general population exposure is **1.0 mW/cm² (equal to 10 W/m²)** for frequency up to 100 GHz.
2. Per FCC interim guidance for near-field power density measurement, the power density was spatially averaged over a circular area of 4 cm².
3. Per FCC guidance in Oct 2018 TCBC workshop, the total exposure ratio calculated by taking ratio of maximum reported SAR divided by SAR limit and adding it to maximum measured power density divided by power density limit. Numerical sum of the ratios should be less than 1.

Part-1 Power Density Characterization Report

2. Description of Equipment Under Test

EUT Type	Smartphone
FCC ID	V65E7200
Brand Name	Kyocera
Model Name	E7200
Tx Frequency Bands [Unit: GHz]	5G NR n260 : 37.0 ~ 40.0 5G NR n261 : 27.5 ~ 28.35
Uplink Modulations	5G NR : Pi/2 BPSK, QPSK, 16QAM, 64QAM, 256QAM
Supported Channel Bandwidth	100 MHz
Supported Carrier Component	2 CC
Uplink Transmission Duty Cycle	100 %
Antenna Information	<p>There are two QTM's 5G patch antenna modules, and each 5G array antenna module consists of 1x5 Patch Antenna Sub-Array sub-array.</p> <p>1x5 Patch Antenna Sub-Array cross-polarized patch antennas, patch antenna +/- 45 degrees vertical or horizontal at full gain (falls off 90 degrees).</p> <p>These three 5G arrays antenna modules do not operate simultaneously of each other. The purpose of the three spatially separated 5G arrays is for spatial diversity.</p> <p>The location of the antenna modules is shown in Photographs of EUT Setup and Antenna Location.</p>
EUT Stage	Identical Prototype

Note:

- The above EUT information is declared by manufacturer and for more detailed features description please refers to the manufacturer's specifications or User's Manual.

List of Accessory:

Battery	Brand Name	KYOCERA
	Model Name	SCP-76LBPS
	Power Rating	3.87V/typ 4270mAh/typ. 16.6Wh
	Type	Li-ion

3. Power Density Measurement System

3.1 Definition of Power Density

The power density for an electromagnetic field represents the rate of energy transfer per unit area. The local power density (i.e. Poynting vector) at a given spatial point is deduced from electromagnetic fields by the following formula:

$$S = \frac{1}{2} \text{Re}\{E \times H^*\} \cdot \vec{n}$$

Where: E is the complex electric field peak phasor and H is the complex conjugate magnetic field peak phasor.

The spatial-average power density distribution on the evaluation surface is determined per the IEC TR 63170. The spatial area, A is specified by the applicable exposure limit or regulatory requirements. The circular shape was used.

$$S_{av} = \frac{1}{2A} \Re \left(\int E \times H^* \cdot \hat{n} dA \right)$$

3.2 SPEAG DASY6 System

The SPEAG DASY6 system consists of high precision robot, probe alignment sensor, phantom, robot controller, controlled measurement server and near-field probe. The robot includes six axes that can move to the precision position of the DASY6 software defined. The DASY6 software can define the area that is detected by the probe. The robot is connected to controlled box. Controlled measurement server is connected to the controlled robot box. The DAE includes amplifier, signal multiplexing, AD converter, offset measurement and surface detection. It is connected to the Electro-optical coupler (EOC). The EOC performs the conversion form the optical into digital electric signal of the DAE and transfers data to the PC.

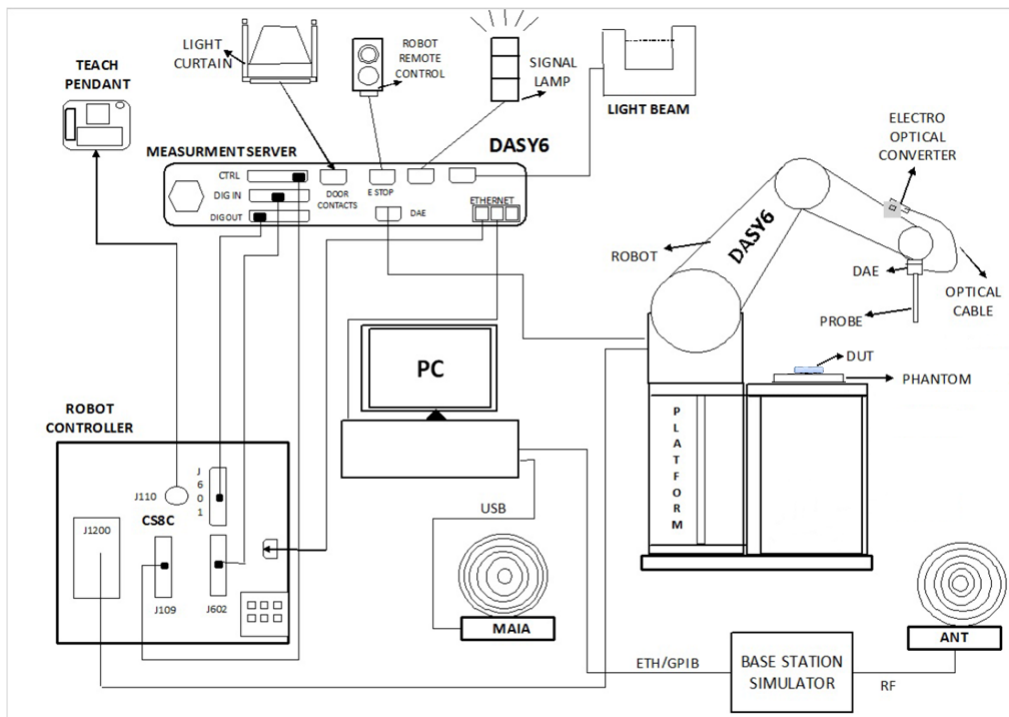


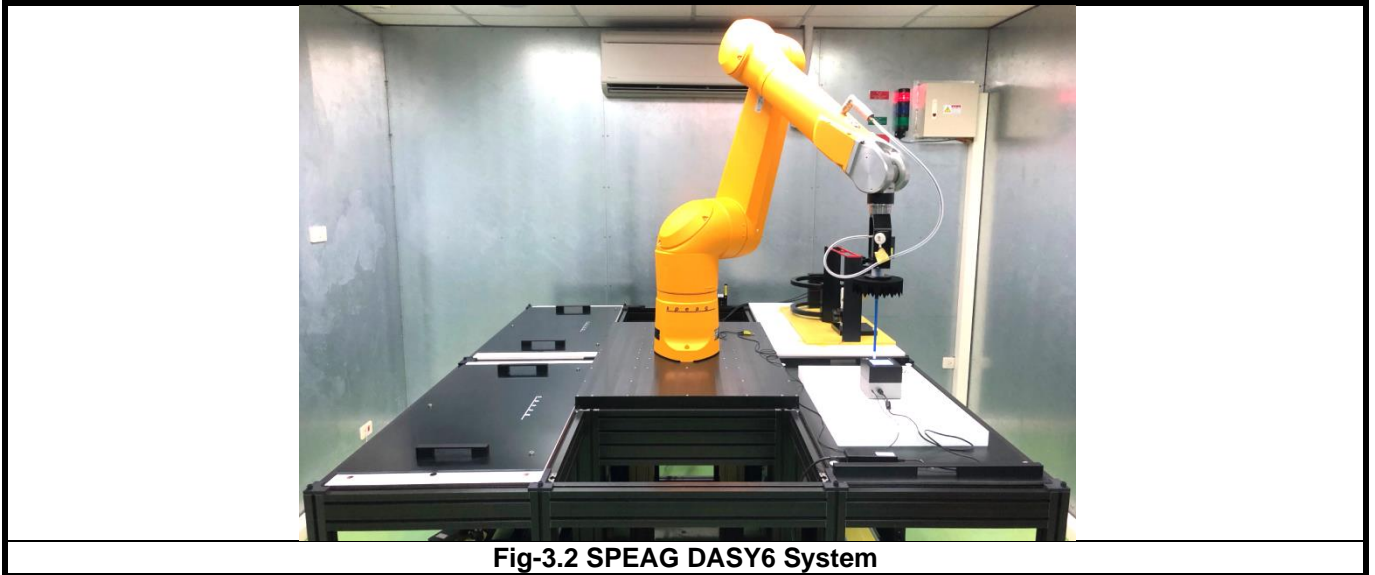
Fig-3.1 SPEAG DASY6 System Configuration

Part-1 Power Density Characterization Report

3.2.1 Robot

The DASY6 system uses the high precision robots from Stäubli SA (France). For the 6-axis controller system, the robot controller version of CS8c from Stäubli is used. The Stäubli robot series have many features that are important for our application:

- High precision (repeatability ± 0.035 mm)
- High reliability (industrial design)
- Jerk-free straight movements
- Low ELF interference (the closed metallic construction shields against motor control fields)



3.2.2 EUmWV4 mm-Wave Probe


The EUmWV4 probe is an electric (E) universal (U) field probe with two dipole sensors for field measurements at frequencies up to 110 GHz and as close as 2 mm from any field source or transmitter. The sensors consist of two diode-loaded small dipoles that provide the rectified voltage from the coupled E-field. From the voltages at three different orientations in the field at known angles, both the magnitude of the field component and the field polarization can be calculated. Due to the small size of the sensors, the probe can be used for measurements over an extremely wide frequency range from <1 GHz to 110 GHz. The probe sensors are protected by non-removable 8 mm high-density foam.

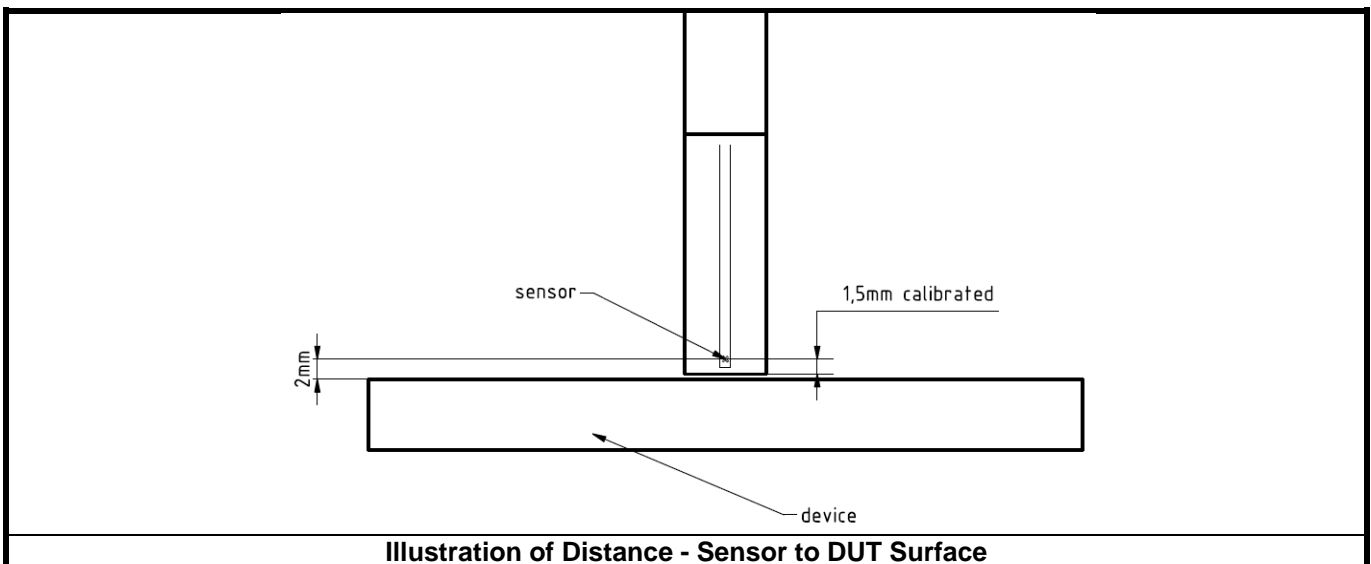
The EUmWV4 probe is based on the pseudo-vector probe design, which not only measures the field magnitude but also derives its polarization ellipse. This probe concept also has the advantage that the sensor angle errors or distortions of the field by the substrate can be largely nullified by calibration. This is particularly important as, at these very high frequencies, field distortions by the substrate are dependent on the wavelength. The design entails two small 0.8 mm dipole sensors mechanically protected by high-density foam, printed on both sides of a 0.9 mm wide and 0.12 mm thick glass substrate. The body of the probe is specifically constructed to minimize distortion by the scattered fields.

Part-1 Power Density Characterization Report


The probe consists of two sensors with different angles arranged in the same plane in the probe axis. Three or more measurements of the two sensors are taken for different probe rotational angles to derive the amplitude and polarization information. These probes are the most flexible and accurate probes currently available for measuring field amplitude.

The probe design allows measurements at distances as small as 2 mm from the sensors to the surface of the device under test (DUT). The typical sensor to probe tip distance is 1.5 mm. The exact distance is calibrated.

Model	EUmmWV4	
Frequency	750 MHz to 110 GHz	
Dynamic Range	< 20 V/m - 10000 V/m with PRE-10 < 50 V/m - 3000 V/m minimum	
Linearity	< ±0.2 dB	
Hemispherical Isotropy	< 0.5 dB	
Position Precision	< 0.2 mm	
Dimensions	Overall length: 337 mm (tip: 20 mm) Tip diameter: encapsulation 8 mm (internal sensor < 1mm) Distance from probe tip to dipole centers: < 2 mm Sensor displacement to probe's calibration point: < 0.3 mm	



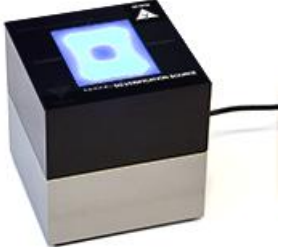
3.2.3 Data Acquisition Electronics (DAE)

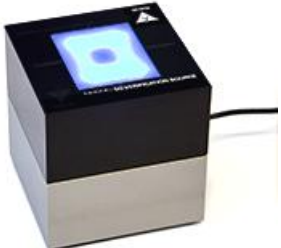
Model	DAE3, DAE4	
Construction	Signal amplifier, multiplexer, A/D converter and control logic. Serial optical link for communication with DASY embedded system (fully remote controlled). Two step probe touch detector for mechanical surface detection and emergency robot stop.	
Measurement Range	-100 to +300 mV (16 bit resolution and two range settings: 4mV, 400mV)	
Input Offset Voltage	< 5µV (with auto zero)	
Input Bias Current	< 50 fA	
Dimensions	60 x 60 x 68 mm	

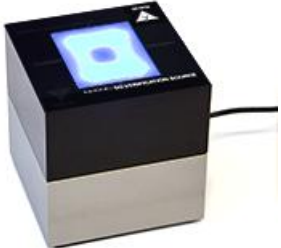
Part-1 Power Density Characterization Report

3.2.4 System Verification Sources

System verification device consists of a horn antenna with corresponding gun oscillator packaged within a cube-shaped housing and power supply provided.

Model	System Verification for Ka-band	
Calibrated Frequency	30 GHz at 10mm from the case surface	
Frequency Accuracy	± 100 MHz	
E-field Polarization	Linear	
Harmonics	-20 dBc	
Total Radiated Power	14 dBm	
Power Stability	0.05 dB	
Power Consumption	5 W	
Size	100 x 100 x 100 mm	
Weight	1 kg	

Model	System Verification for V-band	
Calibrated Frequency	60 GHz at 10mm from the case surface	
Frequency Accuracy	± 100 MHz	
E-field Polarization	Linear	
Harmonics	-20 dBc	
Total Radiated Power	20 dBm	
Power Stability	0.1 dB	
Power Consumption	5 W	
Size	100 x 100 x 100 mm	
Weight	1 kg	

Model	System Verification for W-band	
Calibrated Frequency	90 GHz at 10mm from the case surface	
Frequency Accuracy	± 150 MHz	
E-field Polarization	Linear	
Harmonics	-20 dBc	
Total Radiated Power	16 dBm	
Power Stability	0.15 dB	
Power Consumption	5 W	
Size	100 x 100 x 100 mm	
Weight	1 kg	

3.3 Power Density System Verification

System check provides a fast and reliable method to routinely verify that the measurement system is operational with no system component failures, including probe defects, drifts or deviation from target performance requirements. A system check also verifies the repeatability of the measurement system before compliance testing.

The measurement of a verification source is started from 5G probe installed and the phantom taught. The verification source is placed on the 5G phantom. Due to the internal distance from the horn to the outer surface of the verification source, the measurement distance set in the software should be offset by -4.45 mm; e.g., for measurement of the verification source at 10 mm, the measurement distance set in the software should be 5.55 mm (10mm - 4.45 mm).

The system check is a complete measurement using simple well-defined reference sources. According to the DASY6 specification in the user's manual and SPEAG's recommendation, the deviation threshold of ± 0.66 dB represents the expanded standard uncertainty for system performance check. The system check is successful if the measured results are within ± 0.66 dB tolerances to the target value shown in the calibration certificate of the verification source. The instrumentation and procedures used for system check should ensure the system is ready for performing compliance tests.

Frequency [GHz]	Grid Step	Grid Extent X/Y [mm]	Measurement Points
10	0.25 ($\lambda/4$)	120 / 120	16 x 16
30	0.25 ($\lambda/4$)	60 / 60	24 x 24
60	0.25 ($\lambda/4$)	32.5 / 32.5	26 x 26
90	0.25 ($\lambda/4$)	30 / 30	36 x 36

Table-3.1 Settings for Measurement of Verification Sources

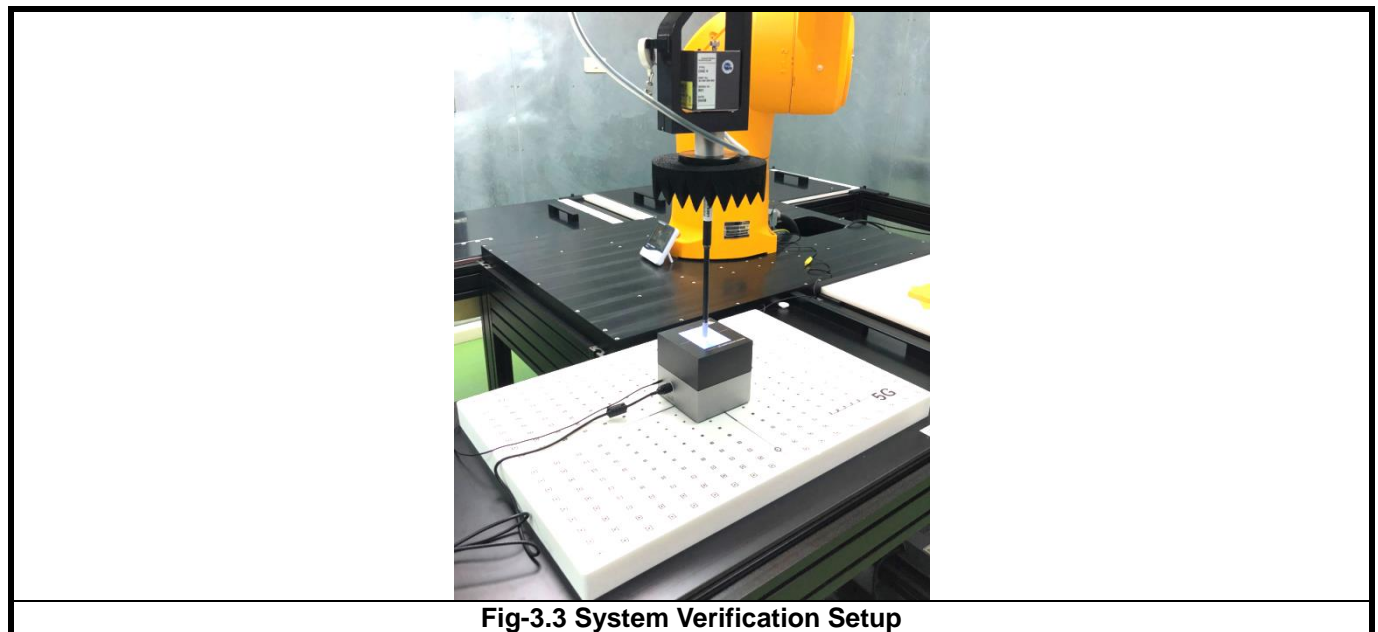


Fig-3.3 System Verification Setup

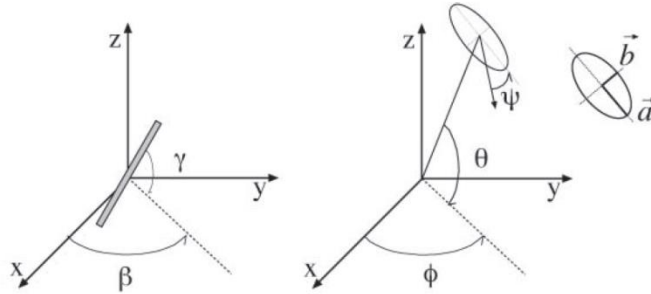
3.4 Power Density Measurement Procedure

Within a short distance from the transmitting source, power density is determined based on both electric and magnetic fields. Generally, the magnitude and phase of two components of either the E-field or H-field are needed on a sufficiently large surface to fully characterize the total E-field and H-field distributions. Nevertheless, solutions based on direct measurement of E-field and H-field can be used to compute power density. When the measurement surface does not correspond to the evaluation surface, reconstruction algorithms are necessary to project or transform the fields from the measurement surface to the evaluation surface. The general measurement approach is summarized in following:

- (a) Measure the E-field on the measurement surface at a reference location where the field is well above the noise level. This reference level will be used at the end of this procedure to assess output power drift of the DUT during the measurement.
- (b) Scan the electric field on the measurement surface. The requirements of measurement surface dimensions and spatial resolution are dependent on the measurement system and assessment methodology applied. Measurements are therefore conducted according to the instructions provided by the measurement system manufacturer.
- (c) Measurement spatial resolution can depend on the measured field characteristic and measurement methodology used by the system. Planar scanners typically require a step size of less than $\lambda / 2$. When measurements are acquired in regions where evanescent modes are not negligible, smaller spatial resolution may be required. Similar criteria also apply to cylindrical scanning systems where the spatial resolution in the vertical direction should be less than $\lambda / 2$.
- (d) Since only E-field is measured on the measurement system, the H-field is calculated from the measured field using a reconstruction algorithm. As power density requires knowledge of both amplitude and phase, reconstruction algorithms can also be used to obtain field information from the measured data (e.g. the phase from the amplitude if only the amplitude is measured). The measurement involves two planes with three different probe rotations on two measurement planes separated by $\lambda / 4$. The grid steps are optimized by the software based on the test frequency. The location of the lowest measurement plane is defined by the distance of first measurement layer from device under test entered by the user. In addition, when the measurement surface does not correspond to the evaluation surface, reconstruction algorithms are employed to project or transform the fields from the measurement surface to the evaluation surface. In substance, reconstruction algorithms are the set of algorithms, mathematical techniques and procedures that are applied to the measured field on the measurement surface to determine E- and H-field (amplitude and phase) on the evaluation surface.
- (e) To determine the spatial-average power density distribution on the evaluation surface. The spatial averaging area, A , is specified by the applicable exposure limits or regulatory requirements. If the shape of the area is not provided by the relevant regulatory requirements, a circular shape is recommended.
- (f) Measure the E-field on the measurement surface position at the reference location chosen in step (a). The power drift of the DUT is estimated as the difference between the squared amplitude of the field values taken in steps (a) and (f). When the drift is smaller than $\pm 5 \%$, this term should be considered in the uncertainty budget. Drifts larger than 5% due to the design and operating characteristics of the device should be accounted for or addressed according to regulatory requirements to determine compliance.

3.4.1 Computation of the Electric Field Polarization Ellipse

For the numerical description of an arbitrarily oriented ellipse in three-dimensional space, five parameters are needed: the semi-major axis (a), the semi-minor axis (b), two angles describing the orientation of the normal vector of the ellipse (Φ , θ), and one angle describing the tilt of the semi-major axis (ψ). For the two extreme cases, i.e., circular and linear polarizations, three parameters only (a , Φ , and θ) are sufficient for the description of the incident field.



For the reconstruction of the ellipse parameters from measured data, the problem can be reformulated as a nonlinear search problem. The semi-major and semi-minor axes of an elliptical field can be expressed as functions of the three angles (Φ , θ , and ψ). The parameters can be uniquely determined towards minimizing the error based on least-squares for the given set of angles and the measured data. In this way, the number of free parameters is reduced from five to three, which means that at least three sensor readings are necessary to gain sufficient information for the reconstruction of the ellipse parameters. However, to suppress the noise and increase the reconstruction accuracy, it is desirable that the system of equations be over-determined. The solution use a probe consisting of two sensors angled by γ_1 and γ_2 toward the probe axis and to perform measurements at three angular positions of the probe, i.e., at β_1 , β_2 , and β_3 , results in over-determinations by a factor of two. If there is a need for more information or increased accuracy, more rotation angles can be added.

The reconstruction of the ellipse parameters can be separated into linear and non-linear parts that are best solved by the givens algorithm combined with a downhill simplex algorithm. To minimize the mutual coupling, sensor angles are set with a shift of 90° ($\gamma_2 = \gamma_1 + 90^\circ$), and, to simplify, the first rotation angle of the probe (β_1) can be set to 0° .

Part-1 Power Density Characterization Report

3.4.2 Total Field and Power Flux Density Reconstruction

Computation of the power density in general requires knowledge of the electric (E-) and magnetic (H-) field amplitudes and phases in the plane of incidence. Reconstruction of these quantities from pseudo-vector E-field measurements is feasible, as they are constrained by Maxwell's equations. The SPEAG have developed a reconstruction approach based on the Gerchberg-Saxton algorithm, which benefits from the availability of the E-field polarization ellipse information obtained with the EUmmWV4 probe. This reconstruction algorithm, together with the ability of the probe to measure extremely close to the source without perturbing the field, permits reconstruction of the E- and H-fields, as well as of the power density, on measurement planes located as near as $\lambda / 5$ away.

3.4.3 Power Flux Density Averaging

The average of the reconstructed power density is evaluated over a circular area in each measurement plane. The area of the circle is defined by the user; the default is 1 cm². The computed peak average value is displayed in the box at the top right. Note that the average is evaluated only for grid points where the averaging circle is completely filled with values; for points at the edge where the averaging circle is only partly filled with values, the average power density is set to zero. Two average power density values are computed:

- 1) $|\text{Re}(S)|$ is the average total power density.
- 2) $\vec{n} \cdot \text{Re}(S)$ is the average incident power density.

4. Power Density Measurement Evaluation

4.1 EUT Configuration and Setting

The 5G NR signal in this device under test was configured by engineering testing software of QRCT (Qualcomm Radio Control Tool) provided by manufacturer that can be used to set the relevant 5G radio parameters such as Tx carrier, RFM device, Beam ID, polarization, Tx band, channel, bandwidth, Tx mode, modulation, output power, RB allocation etc. which can provide continuous transmitting RF signal. During power density testing, this device was operated to transmit continuously at the 100 % transmission duty with specified transmission mode, operating frequency, and maximum output power.

4.2 EUT Testing Position

According to the Power Density simulation report provided by Kyocera, the antenna configuration of maximum transmitting power for each patch antenna module was used to configure transmission with specific antenna and Beam ID for the power density measurement. All other beam ID configurations result in lower EIRP. Therefore, additional evaluations of other beam configurations were not considered.

There are two mm-Wave patch antenna modules for 5G NR in this device which is highly directional and located in Left side, Top side and Rear Face respectively. The power density measurement for each patch antenna module was tested on its beam direction.

The patch antenna module 0 is located on the upper left corner of device, module1 is located on the Top side of the device. The power density measurement was performed on all surfaces for all 3 modulations with lowest, mid and highest channels on both polarization of horizontal and vertical.

4.3 System Verification

Refer to Appendix C.

Part-1 Power Density Characterization Report

4.4 Power Density Testing Results

4.4.1 Test Considerations

Refer to Appendix D.

4.4.2 Power Density Test Results

Refer to Appendix D.

4.4.3 Simultaneous Multi-band Transmission Evaluation

<Total Exposure Ratio Analysis>

The fields generated by the antennas can be correlated or uncorrelated. At different frequencies, fields are always uncorrelated, and the aggregate power density contributions can be summed according to spatially averaged values of corresponding sources at any point in space, r , to determine the total exposure ratio (TER). Assuming I sources, the TER at each point in space is equal to

$$TER^{uncorr}(r) = \sum_{i=1}^I ER_i = \sum_{i=1}^I \frac{S_{av,i}(r, f_i)}{S_{lim}(f_i)}$$

where $S_{av,i}$ is the power density for the source i operating at a frequency f_i , and S_{lim} is the power density limit as specified by the relevant standard.

Exposure from transmitters operating above and below 6 GHz, where 6 GHz denotes the transition frequency where the basic restrictions change from being defined in terms of SAR to being defined in terms of power density, are therefore uncorrelated and the TER is determined as

$$TER^{uncorr}(r) = TER(r)_{f \leq 6GHz} + TER(r)_{f > 6GHz}$$

According to the FCC guidance in Oct 2018 TCBC workshop and IEC TR 63170, the total exposure ratio calculated by taking ratio of maximum reported SAR divided by SAR limit and adding it to maximum measured power density divided by power density limit. Numerical sum of the ratios should be less than 1.

Refer to Appendix E for the TER analysis for this device.

Note: The PD evaluation for mmWave5G was recorded in Part-1 SAR Report (BV CPS report no.: SFBFJZ-WTW-P22110126), and the maximum SAR value here referred from that SAR report.

Test Engineer : Eric Wu and Willy Chang



Part-1 Power Density Characterization Report

5. Calibration of Test Equipment

Equipment	Manufacturer	Model	SN	Cal. Date	Cal. Interval
cDASY6 Module mmWave Software	SPEAG	V1.4.0.14682	N/A	N/A	N/A
E-Field Probe	SPEAG	EUmmWV4	9438	Jul. 18, 2022	1 Year
System Verification Source	SPEAG	5G Verification Source 30 GHz	1016	Aug. 29, 2022	1 Year
Data Acquisition Electronics	SPEAG	DAE4	1341	Jul. 19, 2022	1 Year

Part-1 Power Density Characterization Report

6. Measurement Uncertainty

Source of Uncertainty	Uncertainty (± dB)	Probability Distribution	Divisor	Ci	Standard Uncertainty (± dB)	Vi
Measurement System						
Probe Calibration	0.49	Normal	1	1	0.49	∞
Hemispherical Isotropy	0.50	Rectangular	√3	1	0.29	∞
Linearity	0.20	Rectangular	√3	1	0.12	∞
System Detection Limits	0.04	Rectangular	√3	1	0.02	∞
Modulation Response	0.40	Rectangular	√3	1	0.23	∞
Readout Electronics	0.03	Normal	1	1	0.03	∞
Response Time	0.00	Rectangular	√3	1	0.00	∞
Integration Time	0.00	Rectangular	√3	1	0.00	∞
RF Ambient Conditions – Noise	0.20	Rectangular	√3	1	0.12	∞
RF Ambient Conditions – Reflections	0.20	Rectangular	√3	1	0.12	∞
Probe Positioner Mechanical Tolerance	0.04	Rectangular	√3	1	0.02	∞
Probe Positioning with Respect to Phantom	0.30	Rectangular	√3	1	0.17	∞
S _{avg} Reconstruction	0.60	Rectangular	√3	1	0.35	∞
Test Sample Related						
Power Drift of Measurement	0.20	Rectangular	√3	1	0.12	∞
Input Power	0.00	Normal	1	1	0.00	∞
Combined Standard Uncertainty					± 0.76	
Expanded Uncertainty (K=2)					± 1.52	

Uncertainty Budget for mm-Wave Power Density Measurement

Part-1 Power Density Characterization Report

7. Information on the Testing Laboratories

We, Bureau Veritas Consumer Products Services (H.K.) Ltd., Taoyuan Branch, were founded in 1988 to provide our best service in EMC, Radio, Telecom and Safety consultation. Our laboratories are accredited and approved according to ISO/IEC 17025.

If you have any comments, please feel free to contact us at the following:

Taiwan Huaya Lab:

Add: No. 19, Huaya 2nd Rd., Guishan Dist., Taoyuan City 333, Taiwan

Tel: +886-(0)3-318-3232

Fax: +886-(0)3-211-5834

Taiwan Linkou Lab:

Add: No. 47-2, Baodoucuokeng, Linkou Dist., New Taipei City 244, Taiwan

Tel: +886-(0)2-2605-2180

Fax: +886-(0)2-2605-2943

Taiwan Hsinchu Lab1:

Add: E-2, No. 1, Lixing 1st Rd., East Dist., Hsinchu City 300, Taiwan

Tel: +886-(0)3-666-8565

Fax: +886-(0)3-666-8323

Taiwan Hsinchu Lab2:

Add: No. 49, Ln. 206, Wende Rd., Qionglin Township, Hsinchu County 307, Taiwan

Tel: +886-(0)3-512-0595

Fax: +886-(0)3-512-0568

Taiwan Xindian Lab:

Add: B2F., No. 215, Sec. 3, Beixin Rd., Xindian Dist., New Taipei City 231, Taiwan

Tel: +886-(0)2-8914-5882

Fax: +886-(0)2-8914-5840

Email: service.adt@bureauveritas.com

Web Site: <http://ee.bureauveritas.com.tw>

The road map of all our labs can be found in our web site also.

---END---