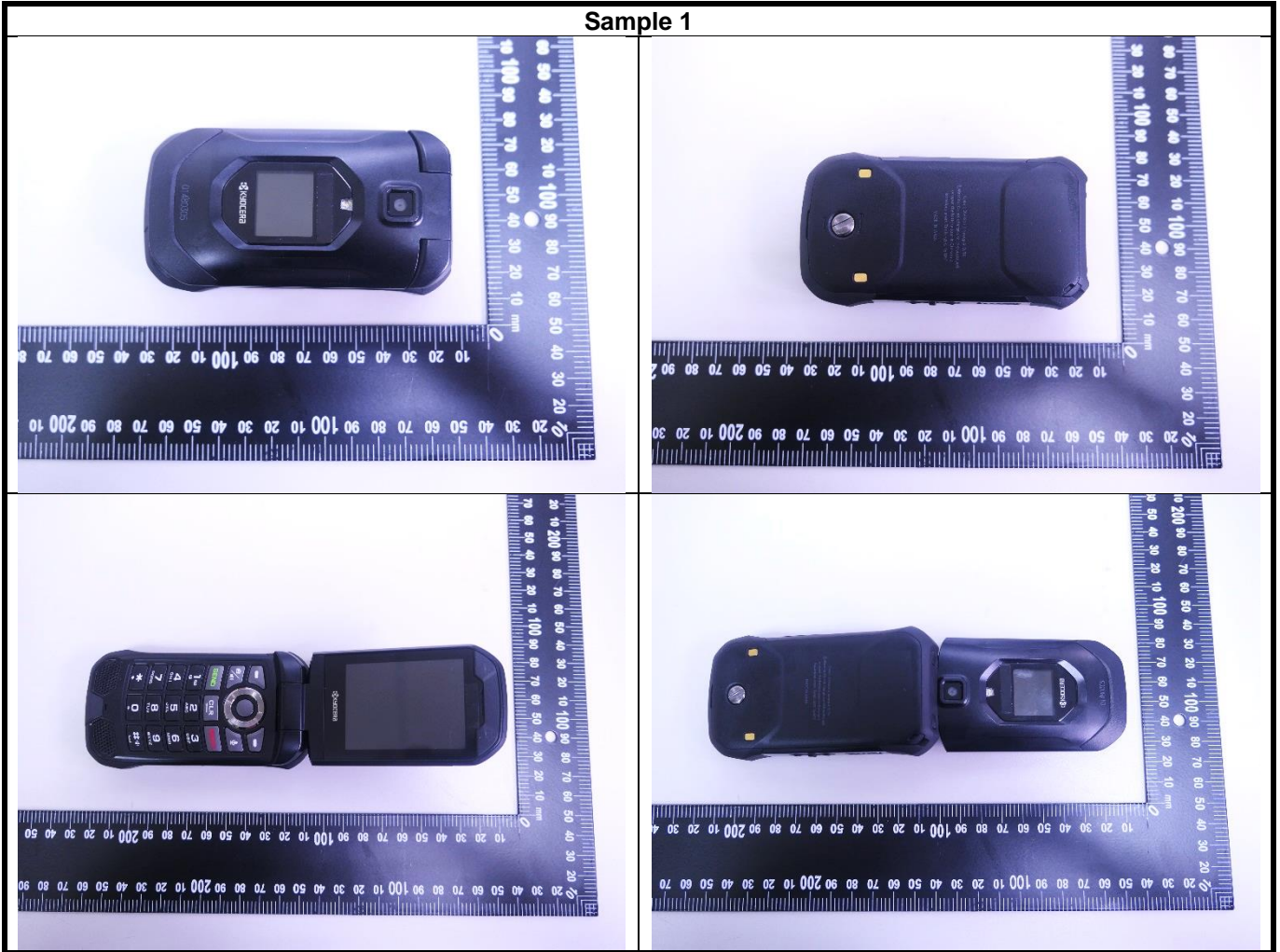


SAR Test Report

<Photographs of EUT>

Sample 1

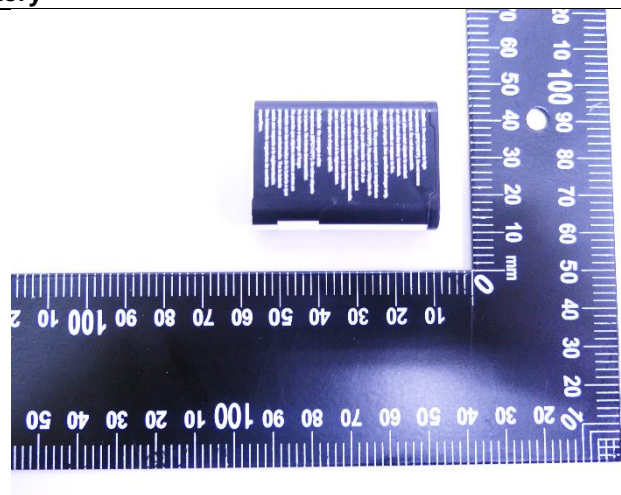
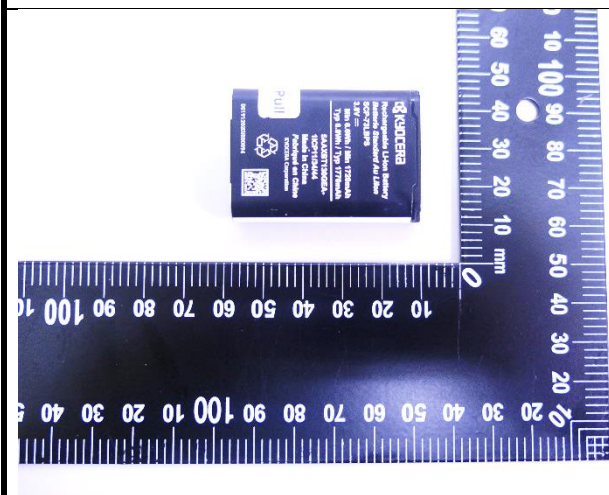


SAR Test Report

Sample 2

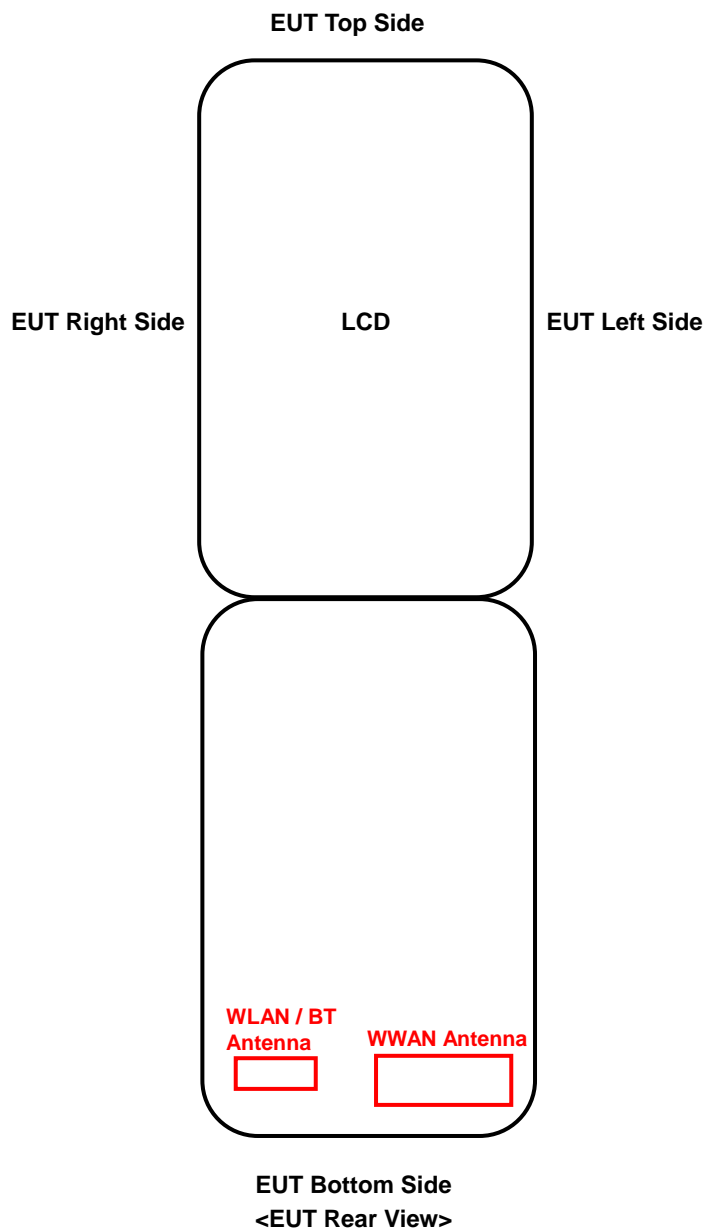


Battery



SAR Test Report

<Antenna Location>



The separation distance for antenna to edge:

Antenna	To Top Side (mm)	To Bottom Side (mm)	To Left Side (mm)	To Right Side (mm)
WWAN Ant	96.5	2	4	22.5
WLAN / BT	97	12	49	9

<Photographs of SAR Setup>



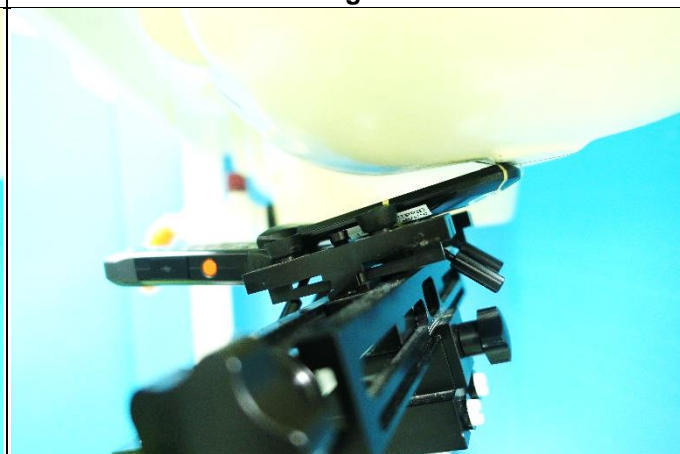
Head - Right Cheek



Head - Right Tilted



Head - Left Cheek



Head - Left Tilted

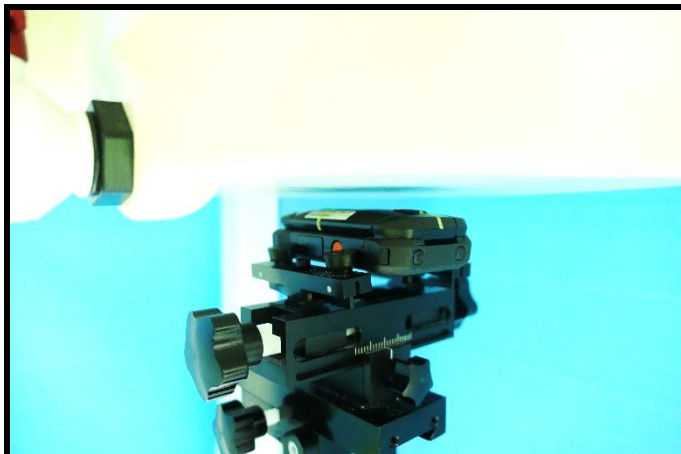


Body worn - Front Face of EUT at 15 mm

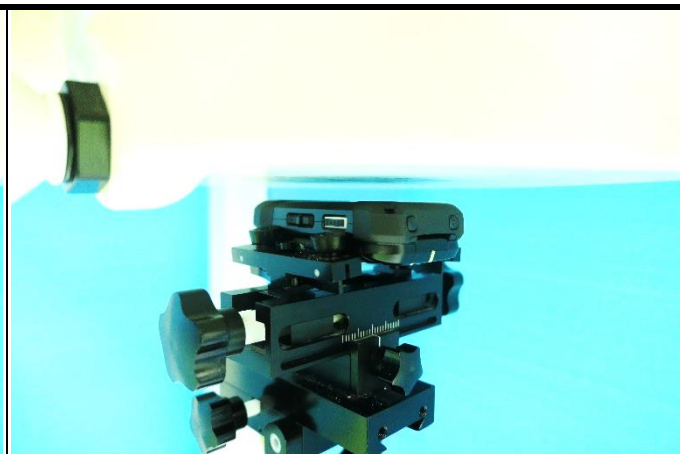


Body worn - Rear Face of EUT at 15 mm

SAR Test Report



Body - Front Face of EUT at 10 mm



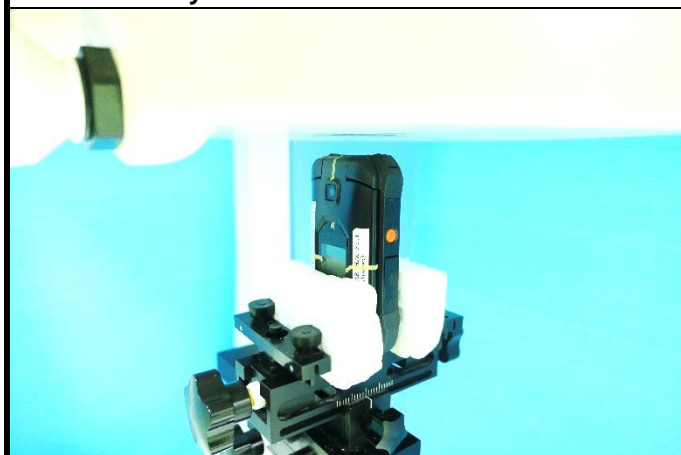
Body - Rear Face of EUT at 10 mm



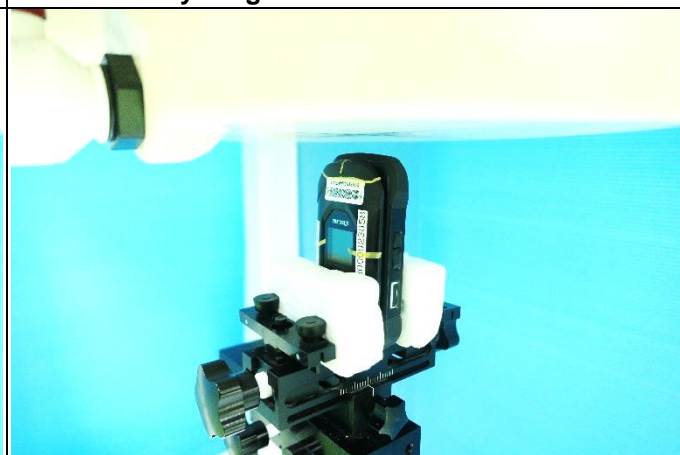
Body - Left Side of EUT at 10 mm



Body - Right Side of EUT at 10 mm



Body - Top Side of EUT at 10 mm



Body - Bottom Side of EUT at 10 mm