

Applicant:	Kyocera
FCC ID:	OVF-C5170
IC#:	3572A- C5170
Report #:	CT- C5170-9B3-0312-R0

EXHIBIT 9 APPENDIX B3: SAR DISTRIBUTION PLOTS (HOTSPOT)

PCS

Applicant:	Kyocera
FCC ID:	OVF-C5170
IC#:	3572A- C5170
Report #:	CT- C5170-9B3-0312-R0

Test Laboratory: Comptest/Kyocera

Date: 03/26/2012

FCC C5170 PCS Flat with 1cm Air Space, Front Ch. 600

Communication System: CDMA-1900, Frequency: 1880 MHz, Duty Cycle: 1:1

Medium: M1800, Medium parameters used: $f = 1880$ MHz; $\sigma = 1.54$ mho/m; $\epsilon_r = 51.9$; $\rho = 1000$ kg/m³

Phantom: SAM 12, Phantom section: Flat Section

DASY4 Configuration:

Probe: ES3DV3 - SN3036, ConvF(4.57, 4.57, 4.57), Calibrated: 5/11/2011

Sensor-Surface: 4mm (Mechanical Surface Detection),

Electronics: DAE4 Sn675, Calibrated: 5/5/2011

Measurement SW: DASY4, V4.7 Build 80

Postprocessing SW: SEMCAD, V1.8 Build 186

Temperature:

Room T = 21.8 +/- 1 deg C, Liquid T = 22.0 +/- 1 deg C

CDMA-1900 Ch600 FLAT - Closed FRONT/Area Scan (61x101x1): Measurement grid: dx=15mm, dy=15mm

Maximum value of SAR (interpolated) = 0.688 mW/g

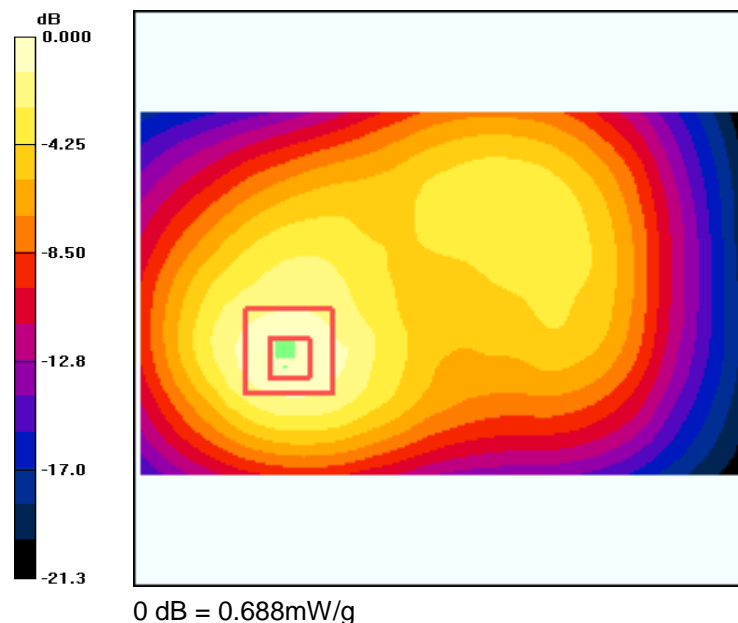
CDMA-1900 Ch600 FLAT - Closed FRONT/Zoom Scan (7x7x7)/Cube 0: Measurement grid: dx=5mm, dy=5mm, dz=5mm

Reference Value = 11.9 V/m; Power Drift = -0.005 dB

Peak SAR (extrapolated) = 0.994 W/kg

SAR(1 g) = 0.607 mW/g; SAR(10 g) = 0.361 mW/g

Maximum value of SAR (measured) = 0.662 mW/g



Applicant:	Kyocera
FCC ID:	OVF-C5170
IC#:	3572A- C5170
Report #:	CT- C5170-9B3-0312-R0

Test Laboratory: Comptest/Kyocera

Date: 03/26/2012

FCC C5170 PCS Flat with 1cm Air Space, Back Ch. 25

Communication System: CDMA-1900, Frequency: 1851.25 MHz, Duty Cycle: 1:1

Medium: M1800, Medium parameters used (interpolated): $f = 1851.25$ MHz; $\sigma = 1.54$ mho/m; $\epsilon_r = 51.9$; $\rho = 1000$ kg/m³

Phantom: SAM 12, Phantom section: Flat Section

DASY4 Configuration:

Probe: ES3DV3 - SN3036, ConvF(4.57, 4.57, 4.57), Calibrated: 5/11/2011

Sensor-Surface: 4mm (Mechanical Surface Detection),

Electronics: DAE4 Sn675, Calibrated: 5/5/2011

Measurement SW: DASY4, V4.7 Build 80

Postprocessing SW: SEMCAD, V1.8 Build 186

Temperature:

Room T = 21.8 +/- 1 deg C, Liquid T = 22.0 +/- 1 deg C

CDMA-1900 Ch25 FLAT - Closed BACK/Area Scan (61x101x1): Measurement grid: dx=15mm, dy=15mm
Maximum value of SAR (interpolated) = 1.04 mW/g

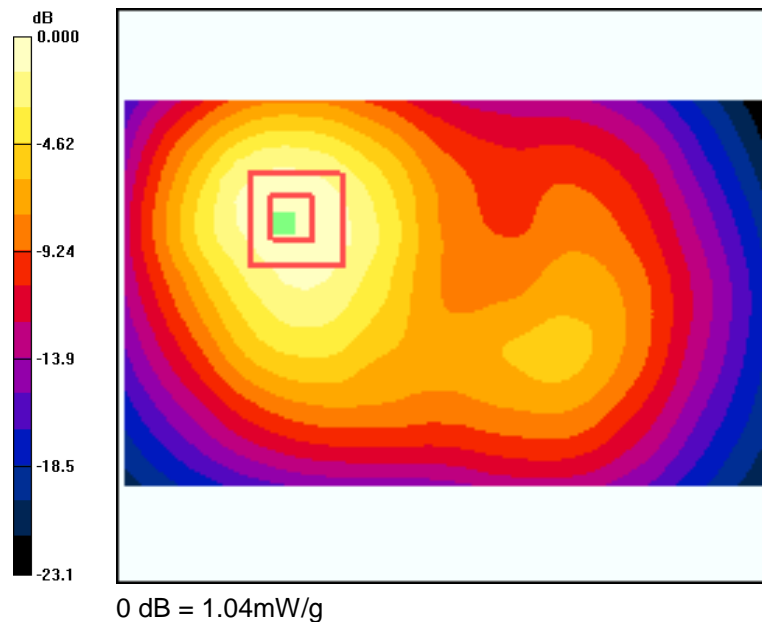
CDMA-1900 Ch25 FLAT - Closed BACK/Zoom Scan (7x7x7)/Cube 0: Measurement grid: dx=5mm, dy=5mm, dz=5mm

Reference Value = 10.8 V/m; Power Drift = 0.025 dB

Peak SAR (extrapolated) = 1.58 W/kg

SAR(1 g) = 0.955 mW/g; SAR(10 g) = 0.564 mW/g

Maximum value of SAR (measured) = 1.03 mW/g



Applicant:	Kyocera
FCC ID:	OVF-C5170
IC#:	3572A- C5170
Report #:	CT- C5170-9B3-0312-R0

Test Laboratory: Comptest/Kyocera

Date: 03/26/2012

FCC C5170 PCS Flat with 1cm Air Space, Back Ch. 600

Communication System: CDMA-1900, Frequency: 1880 MHz, Duty Cycle: 1:1

Medium: M1800, Medium parameters used: $f = 1880$ MHz; $\sigma = 1.54$ mho/m; $\epsilon_r = 51.9$; $\rho = 1000$ kg/m³

Phantom: SAM 12, Phantom section: Flat Section

DASY4 Configuration:

Probe: ES3DV3 - SN3036, ConvF(4.57, 4.57, 4.57), Calibrated: 5/11/2011

Sensor-Surface: 4mm (Mechanical Surface Detection),

Electronics: DAE4 Sn675, Calibrated: 5/5/2011

Measurement SW: DASY4, V4.7 Build 80

Postprocessing SW: SEMCAD, V1.8 Build 186

Temperature:

Room T = 21.8 +/- 1 deg C, Liquid T = 22.0 +/- 1 deg C

CDMA-1900 Ch600 FLAT - Closed BACK/Area Scan (61x101x1): Measurement grid: dx=15mm, dy=15mm

Maximum value of SAR (interpolated) = 0.999 mW/g

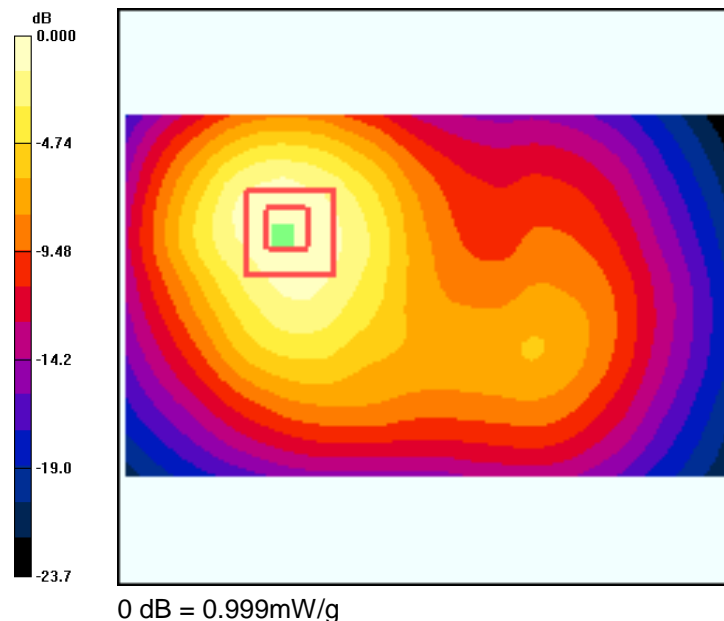
CDMA-1900 Ch600 FLAT - Closed BACK/Zoom Scan (7x7x7)/Cube 0: Measurement grid: dx=5mm, dy=5mm, dz=5mm

Reference Value = 10.8 V/m; Power Drift = 0.182 dB

Peak SAR (extrapolated) = 1.52 W/kg

SAR(1 g) = 0.917 mW/g; SAR(10 g) = 0.543 mW/g

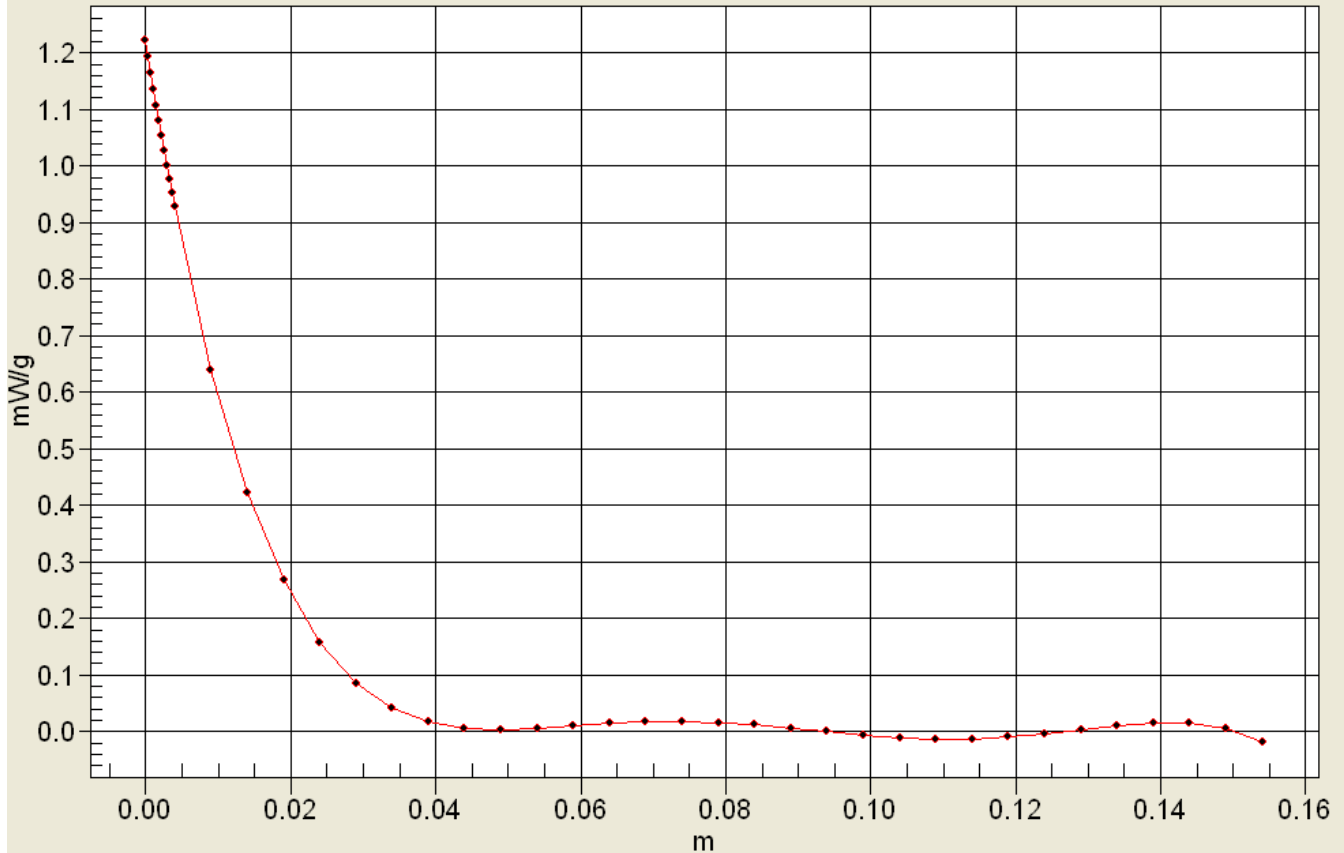
Maximum value of SAR (measured) = 0.999 mW/g





Applicant:	Kyocera
FCC ID:	OVF-C5170
IC#:	3572A- C5170
Report #:	CT- C5170-9B3-0312-R0

Interpolated SAR(x,y,z,f0)
SAR; Z Scan: Value Along Z, X=0, Y=0



Applicant:	Kyocera
FCC ID:	OVF-C5170
IC#:	3572A- C5170
Report #:	CT- C5170-9B3-0312-R0

Test Laboratory: Comptest/Kyocera

Date: 03/26/2012

FCC C5170 PCS Flat with 1cm Air Space, Back Ch. 1175

Communication System: CDMA-1900, Frequency: 1908.75 MHz, Duty Cycle: 1:1

Medium: M1800, Medium parameters used (interpolated): $f = 1908.75$ MHz; $\sigma = 1.54$ mho/m; $\epsilon_r = 51.9$; $\rho = 1000$ kg/m³

Phantom: SAM 12, Phantom section: Flat Section

DASY4 Configuration:

Probe: ES3DV3 - SN3036, ConvF(4.57, 4.57, 4.57), Calibrated: 5/11/2011

Sensor-Surface: 4mm (Mechanical Surface Detection),

Electronics: DAE4 Sn675, Calibrated: 5/5/2011

Measurement SW: DASY4, V4.7 Build 80

Postprocessing SW: SEMCAD, V1.8 Build 186

Temperature:

Room T = 21.8 +/- 1 deg C, Liquid T = 22.0 +/- 1 deg C

CDMA-1900 Ch1175 FLAT - Closed BACK/Area Scan (61x101x1): Measurement grid: dx=15mm, dy=15mm

Maximum value of SAR (interpolated) = 1.16 mW/g

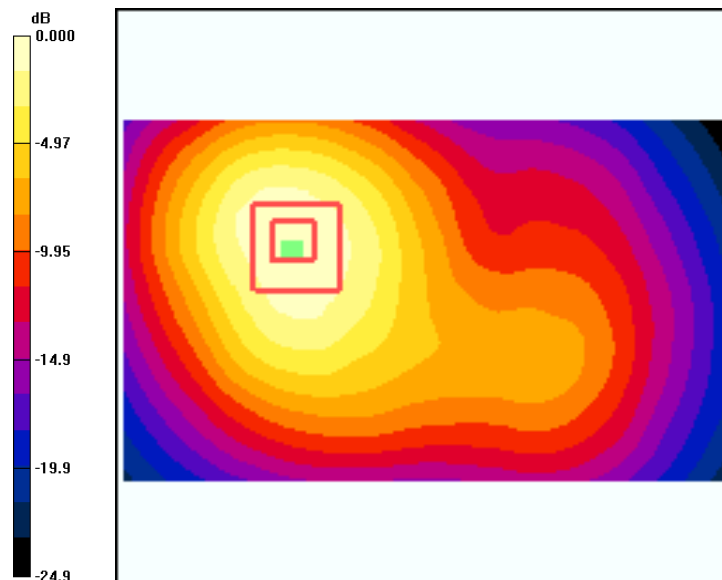
CDMA-1900 Ch1175 FLAT - Closed BACK/Zoom Scan (7x7x7)/Cube 0: Measurement grid: dx=5mm, dy=5mm, dz=5mm

Reference Value = 13.2 V/m; Power Drift = -0.134 dB

Peak SAR (extrapolated) = 1.79 W/kg

SAR(1 g) = 1.06 mW/g; SAR(10 g) = 0.638 mW/g

Maximum value of SAR (measured) = 1.16 mW/g



0 dB = 1.16mW/g

Applicant:	Kyocera
FCC ID:	OVF-C5170
IC#:	3572A- C5170
Report #:	CT- C5170-9B3-0312-R0

Test Laboratory: Comptest/Kyocera

Date: 03/26/2012

FCC C5170 PCS Flat with 1cm Air Space, Left Ch. 600

Communication System: CDMA-1900, Frequency: 1880 MHz, Duty Cycle: 1:1

Medium: M1800, Medium parameters used: $f = 1880$ MHz; $\sigma = 1.54$ mho/m; $\epsilon_r = 51.9$; $\rho = 1000$ kg/m³

Phantom: SAM 12, Phantom section: Flat Section

DASY4 Configuration:

Probe: ES3DV3 - SN3036, ConvF(4.57, 4.57, 4.57), Calibrated: 5/11/2011

Sensor-Surface: 4mm (Mechanical Surface Detection),

Electronics: DAE4 Sn675, Calibrated: 5/5/2011

Measurement SW: DASY4, V4.7 Build 80

Postprocessing SW: SEMCAD, V1.8 Build 186

Temperature:

Room T = 21.8 +/- 1 deg C, Liquid T = 22.0 +/- 1 deg C

CDMA-1900 Ch600 FLAT - Left /Area Scan (91x51x1): Measurement grid: dx=15mm, dy=15mm

Maximum value of SAR (interpolated) = 0.252 mW/g

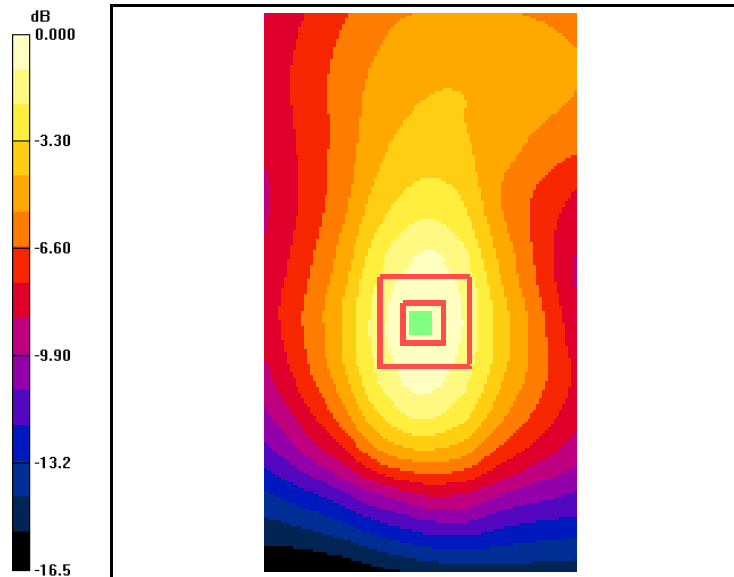
CDMA-1900 Ch600 FLAT - Left /Zoom Scan (7x7x7)/Cube 0: Measurement grid: dx=5mm, dy=5mm, dz=5mm

Reference Value = 12.8 V/m; Power Drift = 0.068 dB

Peak SAR (extrapolated) = 0.374 W/kg

SAR(1 g) = 0.235 mW/g; SAR(10 g) = 0.144 mW/g

Maximum value of SAR (measured) = 0.256 mW/g



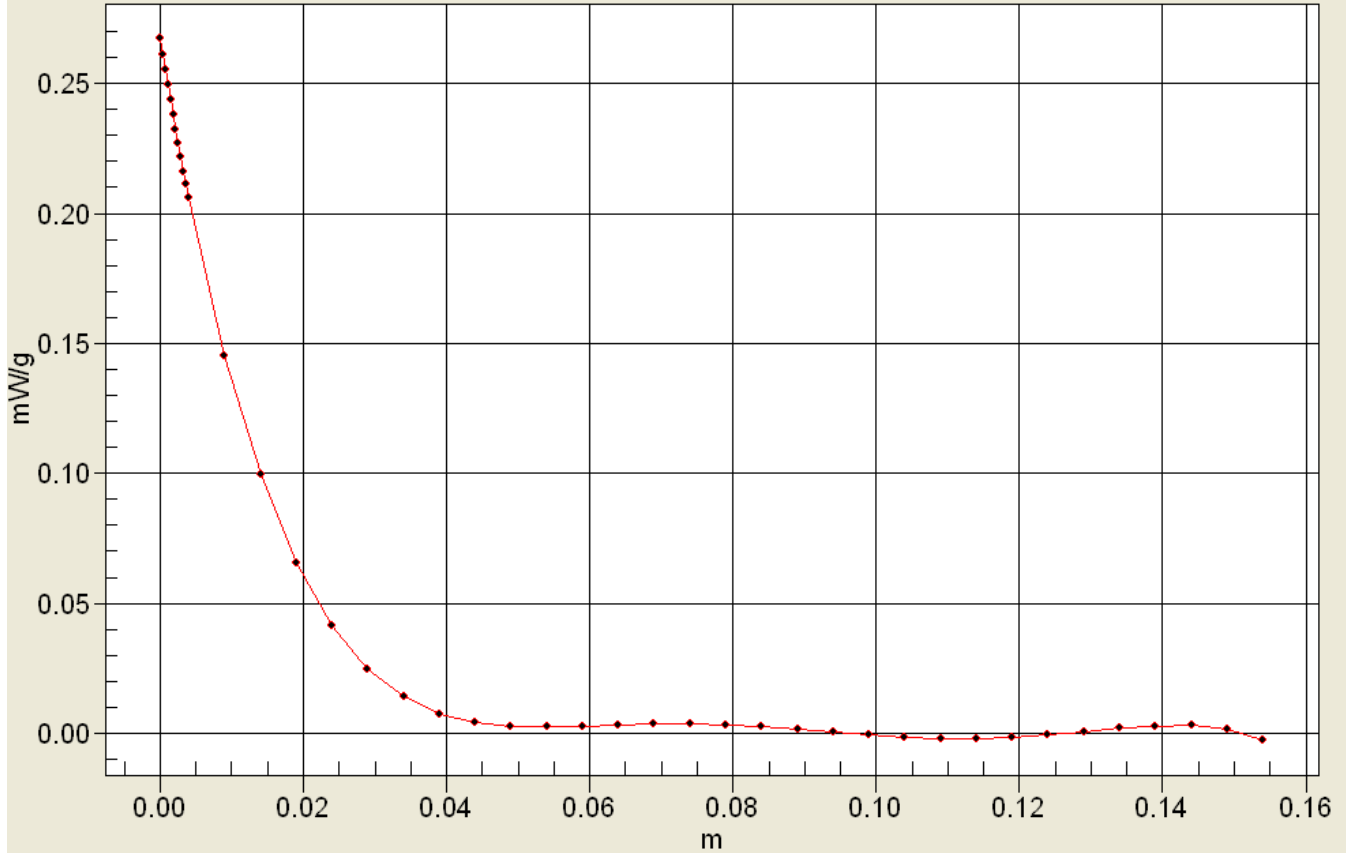
0 dB = 0.252mW/g



Applicant:	Kyocera
FCC ID:	OVF-C5170
IC#:	3572A- C5170
Report #:	CT- C5170-9B3-0312-R0

Interpolated SAR(x,y,z,f0)

SAR; Z Scan: Value Along Z, X=0, Y=0



Applicant:	Kyocera
FCC ID:	OVF-C5170
IC#:	3572A- C5170
Report #:	CT- C5170-9B3-0312-R0

Test Laboratory: Comptest/Kyocera

Date: 03/26/2012

FCC C5170 PCS Flat with 1cm Air Space, Right Ch. 600

Communication System: CDMA-1900, Frequency: 1880 MHz, Duty Cycle: 1:1

Medium: M1800, Medium parameters used: $f = 1880$ MHz; $\sigma = 1.54$ mho/m; $\epsilon_r = 51.9$; $\rho = 1000$ kg/m³

Phantom: SAM 12, Phantom section: Flat Section

DASY4 Configuration:

Probe: ES3DV3 - SN3036, ConvF(4.57, 4.57, 4.57), Calibrated: 5/11/2011

Sensor-Surface: 4mm (Mechanical Surface Detection),

Electronics: DAE4 Sn675, Calibrated: 5/5/2011

Measurement SW: DASY4, V4.7 Build 80

Postprocessing SW: SEMCAD, V1.8 Build 186

Temperature:

Room T = 21.8 +/- 1 deg C, Liquid T = 22.0 +/- 1 deg C

CDMA-1900 Ch600 FLAT - Right /Area Scan (101x51x1): Measurement grid: dx=15mm, dy=15mm

Maximum value of SAR (interpolated) = 0.248 mW/g

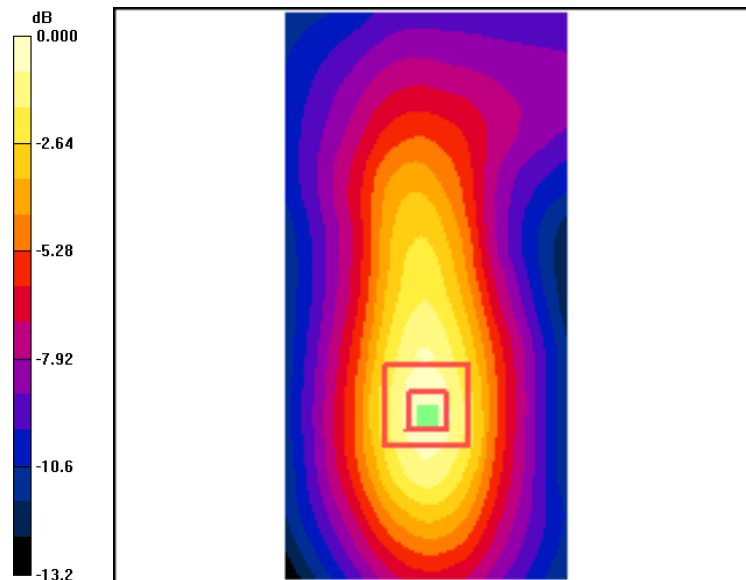
CDMA-1900 Ch600 FLAT - Right /Zoom Scan (7x7x7)/Cube 0: Measurement grid: dx=5mm, dy=5mm, dz=5mm

Reference Value = 10.6 V/m; Power Drift = -0.053 dB

Peak SAR (extrapolated) = 0.350 W/kg

SAR(1 g) = 0.216 mW/g; SAR(10 g) = 0.129 mW/g

Maximum value of SAR (measured) = 0.235 mW/g



0 dB = 0.248mW/g

Applicant:	Kyocera
FCC ID:	OVF-C5170
IC#:	3572A- C5170
Report #:	CT- C5170-9B3-0312-R0

Test Laboratory: Comptest/Kyocera

Date: 03/26/2012

FCC C5170 PCS Flat with 1cm Air Space, Bottom Ch. 600

Communication System: CDMA-1900, Frequency: 1880 MHz, Duty Cycle: 1:1
 Medium: M1800, Medium parameters used: $f = 1880$ MHz; $\sigma = 1.54$ mho/m; $\epsilon_r = 51.9$; $\rho = 1000$ kg/m³
 Phantom: SAM 12, Phantom section: Flat Section

DASY4 Configuration:

Probe: ES3DV3 - SN3036, ConvF(4.57, 4.57, 4.57), Calibrated: 5/11/2011
 Sensor-Surface: 4mm (Mechanical Surface Detection),
 Electronics: DAE4 Sn675, Calibrated: 5/5/2011
 Measurement SW: DASY4, V4.7 Build 80
 Postprocessing SW: SEMCAD, V1.8 Build 186

Temperature:

Room T = 21.8 +/- 1 deg C, Liquid T = 22.0 +/- 1 deg C

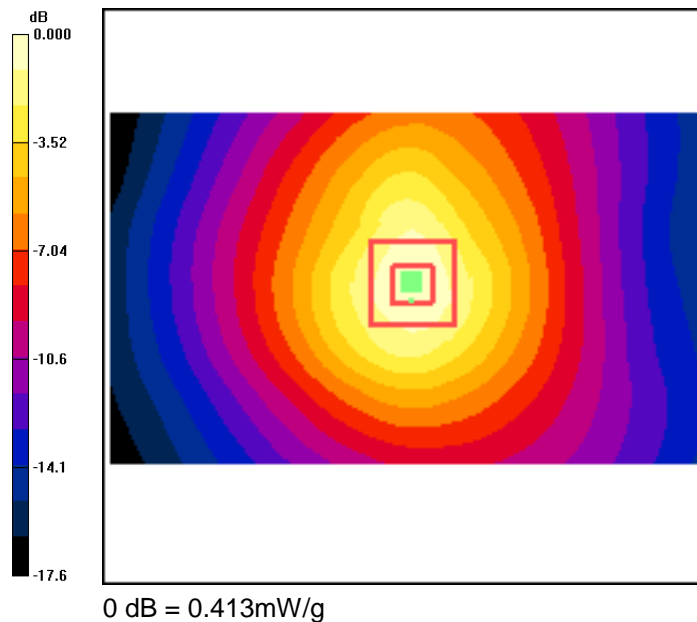
CDMA-1900 Ch600 FLAT - Bottom /Area Scan (61x101x1): Measurement grid: dx=15mm, dy=15mm
 Maximum value of SAR (interpolated) = 0.413 mW/g

CDMA-1900 Ch600 FLAT - Bottom /Zoom Scan (7x7x7)/Cube 0:

Measurement grid: dx=5mm, dy=5mm, dz=5mm
 Reference Value = 16.7 V/m; Power Drift = -0.091 dB
 Peak SAR (extrapolated) = 0.592 W/kg

SAR(1 g) = 0.372 mW/g; SAR(10 g) = 0.220 mW/g

Maximum value of SAR (measured) = 0.407 mW/g



Applicant:	Kyocera
FCC ID:	OVF-C5170
IC#:	3572A- C5170
Report #:	CT- C5170-9B3-0312-R0

WIFI

Applicant:	Kyocera
FCC ID:	OVF-C5170
IC#:	3572A- C5170
Report #:	CT- C5170-9B3-0312-R0

Test Laboratory: Comptest/Kyocera

Date: 03/22/2012

FCC C5170 WIFI Flat with 1cm Air Space, Front Ch. 11

Communication System: WLAN-2450, Frequency: 2462 MHz, Duty Cycle: 1:1

Medium: M2450, Medium parameters used: $f = 2500$ MHz; $\sigma = 1.98$ mho/m; $\epsilon_r = 50.4$; $\rho = 1000$ kg/m³

Phantom: SAM 12, Phantom section: Flat Section

DASY4 Configuration:

Probe: ES3DV3 - SN3078, ConvF(4.16, 4.16, 4.16), Calibrated: 9/19/2011

Sensor-Surface: 4mm (Mechanical Surface Detection),

Electronics: DAE4 Sn530, Calibrated: 5/5/2011

Measurement SW: DASY4, V4.7 Build 80

Postprocessing SW: SEMCAD, V1.8 Build 186

Temperature:

Room T = 21.8 +/- 1 deg C, Liquid T = 22.0 +/- 1 deg C

WLAN Ch11 FLAT - Face Up/Area Scan (61x91x1): Measurement grid: dx=15mm, dy=15mm

Maximum value of SAR (interpolated) = 0.300 mW/g

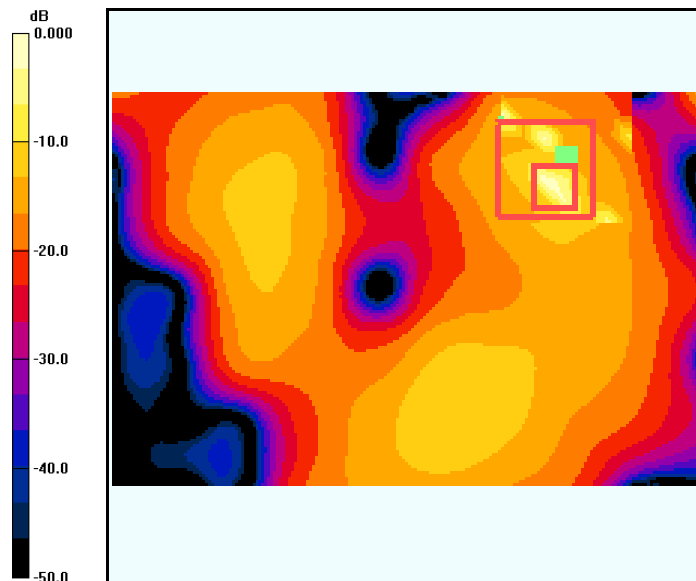
WLAN Ch11 FLAT - Face Up/Zoom Scan (7x7x7)/Cube 0: Measurement grid: dx=5mm, dy=5mm, dz=5mm

Reference Value = 0.761 V/m; Power Drift = -0.121 dB

Peak SAR (extrapolated) = 0.470 W/kg

SAR(1 g) = 0.087 mW/g; SAR(10 g) = 0.022 mW/g

Maximum value of SAR (measured) = 0.246 mW/g



Applicant:	Kyocera
FCC ID:	OVF-C5170
IC#:	3572A- C5170
Report #:	CT- C5170-9B3-0312-R0

Test Laboratory: Comptest/Kyocera

Date: 03/22/2012

FCC C5170 WIFI Flat with 1cm Air Space, Back Ch. 11

Communication System: WLAN-2450, Frequency: 2462 MHz, Duty Cycle: 1:1

Medium: M2450, Medium parameters used: $f = 2500$ MHz; $\sigma = 1.98$ mho/m; $\epsilon_r = 50.4$; $\rho = 1000$ kg/m³

Phantom: SAM 12, Phantom section: Flat Section

DASY4 Configuration:

Probe: ES3DV3 - SN3078, ConvF(4.16, 4.16, 4.16), Calibrated: 9/19/2011

Sensor-Surface: 4mm (Mechanical Surface Detection),

Electronics: DAE4 Sn530, Calibrated: 5/5/2011

Measurement SW: DASY4, V4.7 Build 80

Postprocessing SW: SEMCAD, V1.8 Build 186

Temperature:

Room T = 21.8 +/- 1 deg C, Liquid T = 22.0 +/- 1 deg C

WLAN Ch11 FLAT - Face Down/Area Scan (61x91x1): Measurement grid: dx=15mm, dy=15mm

Maximum value of SAR (interpolated) = 0.086 mW/g

WLAN Ch11 FLAT - Face Down/Zoom Scan (7x7x7)/Cube 0: Measurement grid: dx=5mm, dy=5mm, dz=5mm

Reference Value = 2.49 V/m; Power Drift = 0.167 dB

Peak SAR (extrapolated) = 0.223 W/kg

SAR(1 g) = 0.062 mW/g; SAR(10 g) = 0.026 mW/g

Maximum value of SAR (measured) = 0.212 mW/g

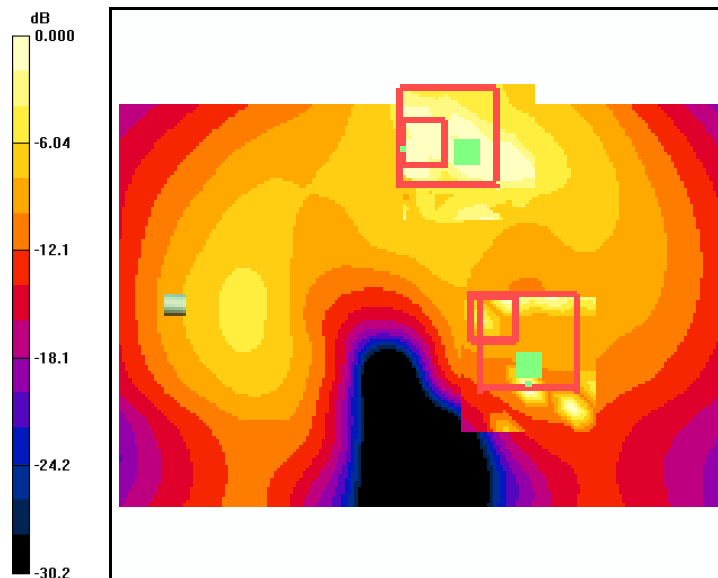
WLAN Ch11 FLAT - Face Down/Zoom Scan (7x7x7)/Cube 1: Measurement grid: dx=5mm, dy=5mm, dz=5mm

Reference Value = 2.49 V/m; Power Drift = 0.167 dB

Peak SAR (extrapolated) = 0.275 W/kg

SAR(1 g) = 0.105 mW/g; SAR(10 g) = 0.052 mW/g

Maximum value of SAR (measured) = 0.141 mW/g



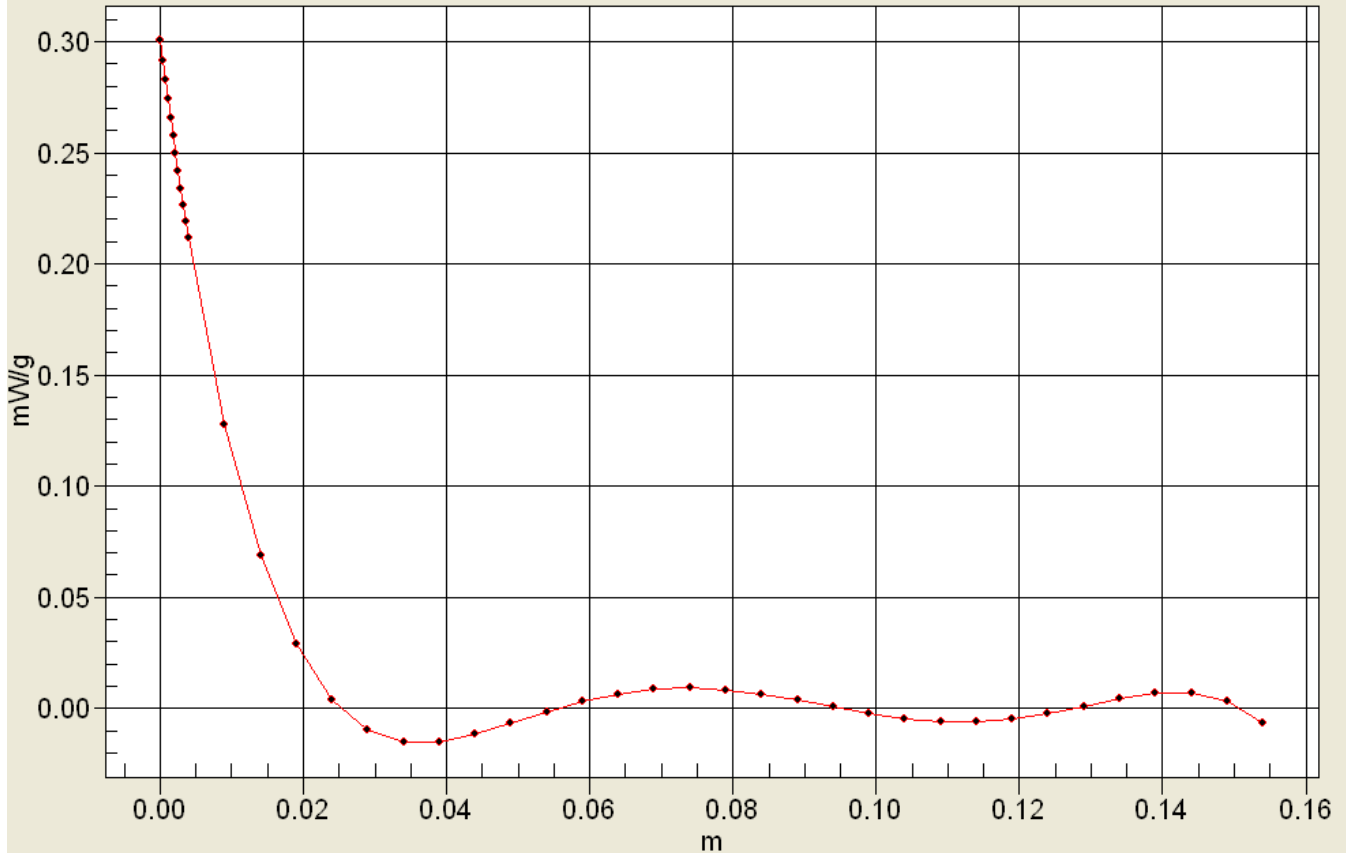
0 dB = 0.141mW/g



Applicant:	Kyocera
FCC ID:	OVF-C5170
IC#:	3572A- C5170
Report #:	CT- C5170-9B3-0312-R0

Interpolated SAR(x,y,z,f0)

SAR; Z Scan: Value Along Z, X=0, Y=0



Applicant:	Kyocera
FCC ID:	OVF-C5170
IC#:	3572A- C5170
Report #:	CT- C5170-9B3-0312-R0

Test Laboratory: Comptest/Kyocera

Date: 03/22/2012

FCC C5170 WIFI Flat with 1cm Air Space, Left Ch. 11

Communication System: WLAN-2450, Frequency: 2462 MHz, Duty Cycle: 1:1

Medium: M2450, Medium parameters used: $f = 2500$ MHz; $\sigma = 1.98$ mho/m; $\epsilon_r = 50.4$; $\rho = 1000$ kg/m³

Phantom: SAM 12, Phantom section: Flat Section

DASY4 Configuration:

Probe: ES3DV3 - SN3078, ConvF(4.16, 4.16, 4.16), Calibrated: 9/19/2011

Sensor-Surface: 4mm (Mechanical Surface Detection),

Electronics: DAE4 Sn530, Calibrated: 5/5/2011

Measurement SW: DASY4, V4.7 Build 80

Postprocessing SW: SEMCAD, V1.8 Build 186

Temperature:

Room T = 21.8 +/- 1 deg C, Liquid T = 22.0 +/- 1 deg C

WLAN Ch11 FLAT -Left/Area Scan (61x91x1): Measurement grid: dx=15mm, dy=15mm

Maximum value of SAR (interpolated) = 0.088 mW/g

WLAN Ch11 FLAT -Left/Zoom Scan (7x7x7)/Cube 0: Measurement grid: dx=5mm, dy=5mm, dz=5mm

Reference Value = 1.22 V/m; Power Drift = 0.017 dB

Peak SAR (extrapolated) = 0.718 W/kg

SAR(1 g) = 0.017 mW/g; SAR(10 g) = 0.00586 mW/g

Maximum value of SAR (measured) = 0.219 mW/g

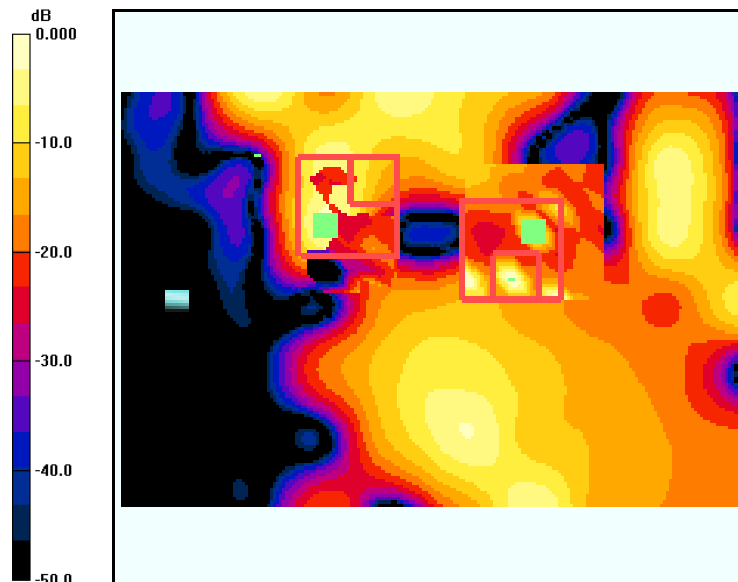
WLAN Ch11 FLAT -Left/Zoom Scan (7x7x7)/Cube 1: Measurement grid: dx=5mm, dy=5mm, dz=5mm

Reference Value = 1.22 V/m; Power Drift = 0.017 dB

Peak SAR (extrapolated) = 0.041 W/kg

SAR(1 g) = 0.00444 mW/g; SAR(10 g) = 0.000982 mW/g

Maximum value of SAR (measured) = 0.027 mW/g



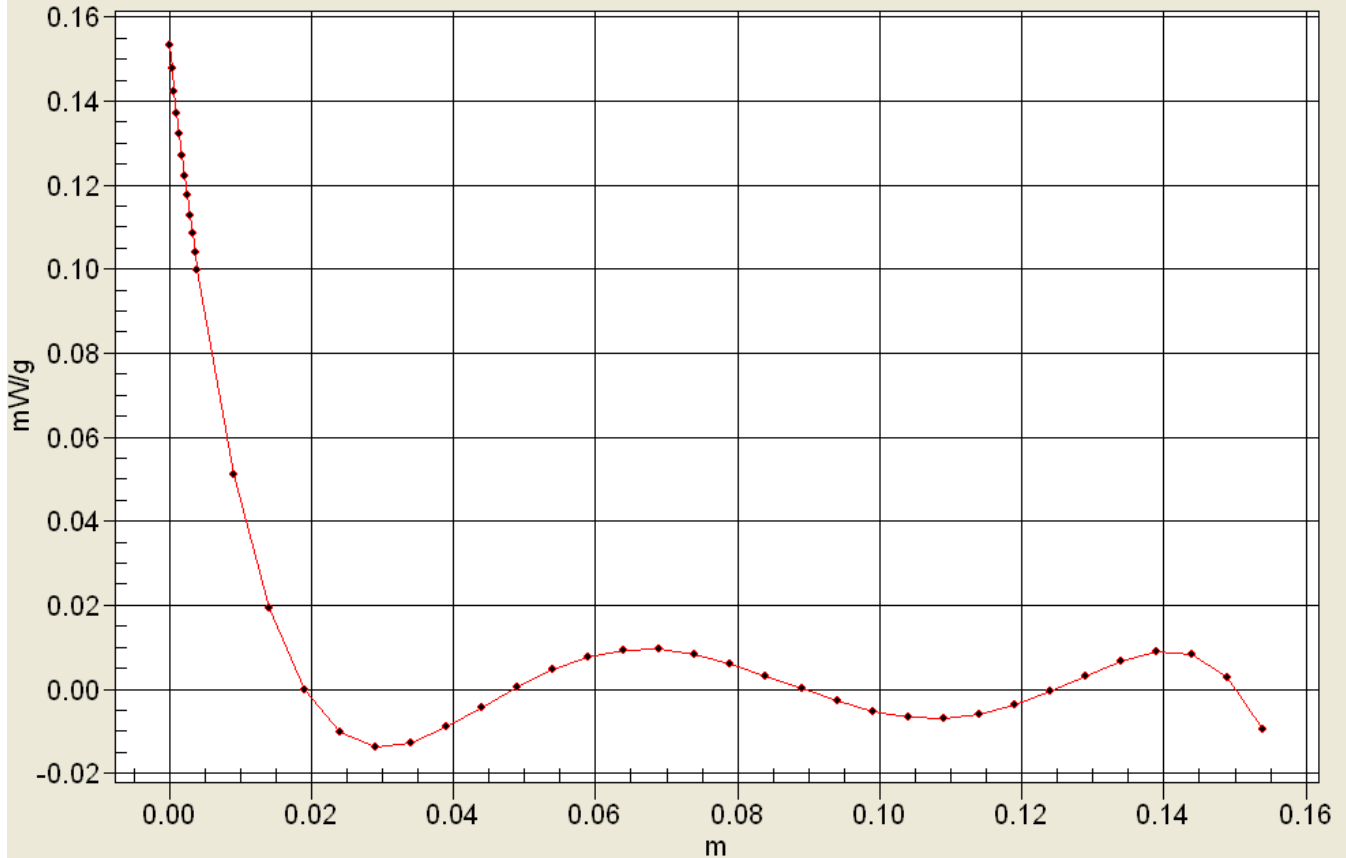
0 dB = 0.088mW/g



Applicant:	Kyocera
FCC ID:	OVF-C5170
IC#:	3572A- C5170
Report #:	CT- C5170-9B3-0312-R0

Interpolated SAR(x,y,z,f0)

SAR; Z Scan: Value Along Z, X=0, Y=0



Applicant:	Kyocera
FCC ID:	OVF-C5170
IC#:	3572A- C5170
Report #:	CT- C5170-9B3-0312-R0

Test Laboratory: Comptest/Kyocera

Date: 03/22/2012

FCC C5170 WIFI Flat with 1cm Air Space, Bottom Ch. 11

Communication System: WLAN-2450, Frequency: 2462 MHz, Duty Cycle: 1:1

Medium: M2450, Medium parameters used: $f = 2500$ MHz; $\sigma = 1.98$ mho/m; $\epsilon_r = 50.4$; $\rho = 1000$ kg/m³

Phantom: SAM 12, Phantom section: Flat Section

DASY4 Configuration:

Probe: ES3DV3 - SN3078, ConvF(4.16, 4.16, 4.16), Calibrated: 9/19/2011

Sensor-Surface: 4mm (Mechanical Surface Detection),

Electronics: DAE4 Sn530, Calibrated: 5/5/2011

Measurement SW: DASY4, V4.7 Build 80

Postprocessing SW: SEMCAD, V1.8 Build 186

Temperature:

Room T = 21.8 +/- 1 deg C, Liquid T = 22.0 +/- 1 deg C

WLAN Ch11 FLAT -Bottom/Area Scan (71x51x1): Measurement grid: dx=15mm, dy=15mm

Maximum value of SAR (interpolated) = 0.095 mW/g

WLAN Ch11 FLAT -Bottom/Zoom Scan (7x7x7)/Cube 0: Measurement grid: dx=5mm, dy=5mm, dz=5mm

Reference Value = 1.20 V/m; Power Drift = 0.123 dB

Peak SAR (extrapolated) = 0.481 W/kg

SAR(1 g) = 0.101 mW/g; SAR(10 g) = 0.027 mW/g

Maximum value of SAR (measured) = 0.273 mW/g

WLAN Ch11 FLAT -Bottom/Zoom Scan (7x7x7)/Cube 1: Measurement grid: dx=5mm, dy=5mm, dz=5mm

Reference Value = 1.20 V/m; Power Drift = 0.123 dB

Peak SAR (extrapolated) = 0.290 W/kg

SAR(1 g) = 0.030 mW/g; SAR(10 g) = 0.00917 mW/g

Maximum value of SAR (measured) = 0.163 mW/g

