



Applicant:	Kyocera
FCC ID:	V65C5155
Report #:	CT-C5155-9A-0312-R0

EXHIBIT 9 APPENDIX A: SAR VALIDATION PLOTS

Validation for HEAD

Applicant:	Kyocera
FCC ID:	V65C5155
Report #:	CT-C5155-9A-0312-R0

Test Laboratory: Comptest/Kyocera

Date: 03/21/2012

835MHz Validation @ 20dbm, Probe #1618, DAE#602, Dipole #467

Communication System: CDMA, Frequency: 835 MHz, Duty Cycle: 1:1

Medium: Head 835 MHz, Medium parameters used: $f = 835 \text{ MHz}$; $\sigma = 0.91 \text{ mho/m}$; $\epsilon_r = 41.5$; $\rho = 1000 \text{ kg/m}^3$

Phantom: SAM 12, Phantom section: Flat Section

DASY4 Configuration:

Probe: ET3DV6 - SN1618, ConvF(6.31, 6.31, 6.31), Calibrated: 9/19/2011

Sensor-Surface: 4mm (Mechanical Surface Detection),

Electronics: DAE4 Sn602, Calibrated: 9/16/2011

Measurement SW: DASY4, V4.7 Build 80

Postprocessing SW: SEMCAD, V1.8 Build 186

Temperature:

Room T = 21.8 \pm 1 deg C, Liquid T = 22.0 \pm 1 deg C

835MHz Validation/Area Scan (61x121x1): Measurement grid: dx=15mm, dy=15mm

Maximum value of SAR (interpolated) = 1.06 mW/g

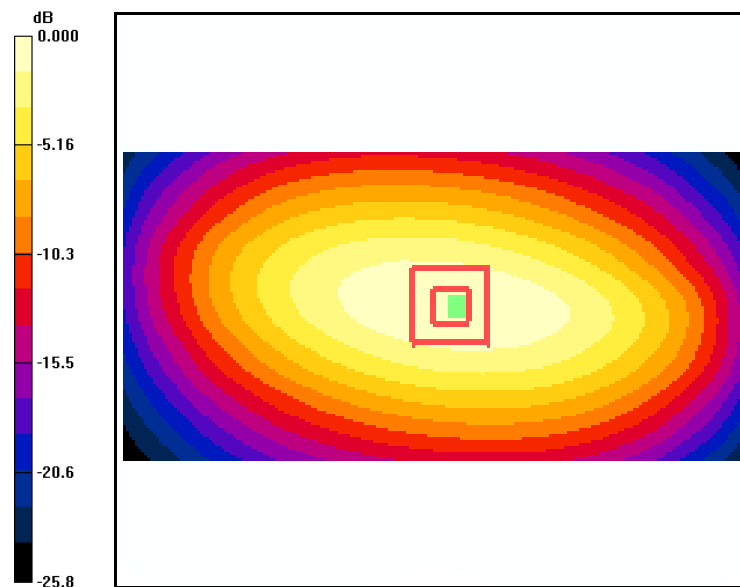
835MHz Validation/Zoom Scan (7x7x7)/Cube 0: Measurement grid: dx=5mm, dy=5mm, dz=5mm

Reference Value = 35.5 V/m; Power Drift = -0.123 dB

Peak SAR (extrapolated) = 1.41 W/kg

SAR(1 g) = 0.974 mW/g; SAR(10 g) = 0.639 mW/g

Maximum value of SAR (measured) = 1.05 mW/g

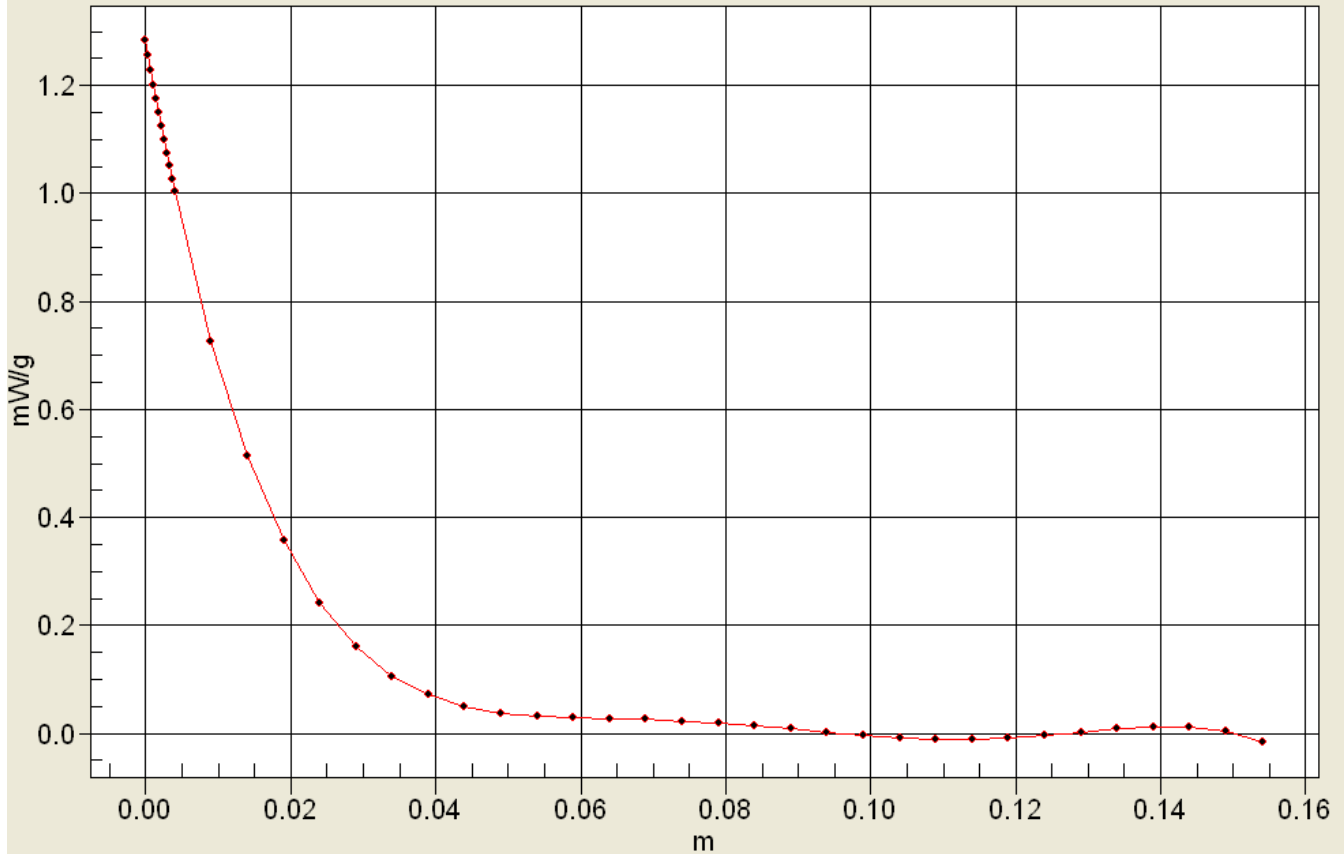


0 dB = 1.06mW/g



Applicant:	Kyocera
FCC ID:	V65C5155
Report #:	CT-C5155-9A-0312-R0

Interpolated SAR(x,y,z,f0)
SAR; Z Scan: Value Along Z, X=0, Y=0



Applicant:	Kyocera
FCC ID:	V65C5155
Report #:	CT-C5155-9A-0312-R0

Test Laboratory: Comptest/Kyocera

Date: 03/22/2012

835MHz Validation @ 20dbm, Probe #1618, DAE#602, Dipole #467

Communication System: CDMA, Frequency: 835 MHz, Duty Cycle: 1:1

Medium: Head 835 MHz, Medium parameters used: $f = 835 \text{ MHz}$; $\sigma = 0.92 \text{ mho/m}$; $\epsilon_r = 43$; $\rho = 1000 \text{ kg/m}^3$

Phantom: SAM 12, Phantom section: Flat Section

DASY4 Configuration:

Probe: ET3DV6 - SN1618, ConvF(6.31, 6.31, 6.31), Calibrated: 9/19/2011

Sensor-Surface: 4mm (Mechanical Surface Detection),

Electronics: DAE4 Sn602, Calibrated: 9/16/2011

Measurement SW: DASY4, V4.7 Build 80

Postprocessing SW: SEMCAD, V1.8 Build 186

Temperature:

Room T = 21.8 \pm 1 deg C, Liquid T = 22.0 \pm 1 deg C

835MHz Validation/Area Scan (61x121x1): Measurement grid: dx=15mm, dy=15mm

Maximum value of SAR (interpolated) = 1.06 mW/g

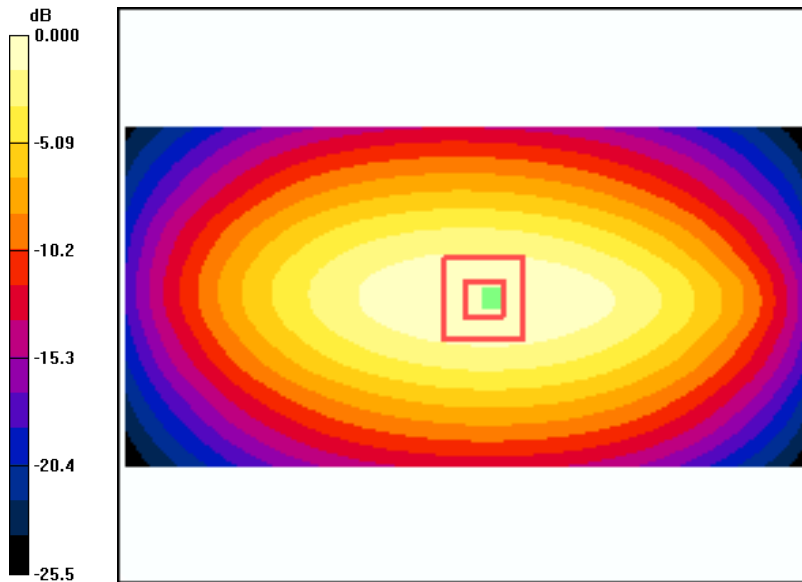
835MHz Validation/Zoom Scan (7x7x7)/Cube 0: Measurement grid: dx=5mm, dy=5mm, dz=5mm

Reference Value = 34.9 V/m; Power Drift = 0.019 dB

Peak SAR (extrapolated) = 1.40 W/kg

SAR(1 g) = 0.974 mW/g; SAR(10 g) = 0.639 mW/g

Maximum value of SAR (measured) = 1.05 mW/g



0 dB = 1.06mW/g

Applicant:	Kyocera
FCC ID:	V65C5155
Report #:	CT-C5155-9A-0312-R0

Test Laboratory: Comptest/Kyocera

Date: 03/26/2012

835MHz Validation @ 20dbm, Probe #1618, DAE#602, Dipole #467

Communication System: CDMA, Frequency: 835 MHz, Duty Cycle: 1:1

Medium: Head 835 MHz, Medium parameters used: $f = 835 \text{ MHz}$; $\sigma = 0.91 \text{ mho/m}$; $\epsilon_r = 42.1$; $\rho = 1000 \text{ kg/m}^3$

Phantom: SAM 12, Phantom section: Flat Section

DASY4 Configuration:

Probe: ET3DV6 - SN1618, ConvF(6.31, 6.31, 6.31), Calibrated: 9/19/2011

Sensor-Surface: 4mm (Mechanical Surface Detection),

Electronics: DAE4 Sn602, Calibrated: 9/16/2011

Measurement SW: DASY4, V4.7 Build 80

Postprocessing SW: SEMCAD, V1.8 Build 186

Temperature:

Room T = 21.8 \pm 1 deg C, Liquid T = 22.0 \pm 1 deg C

835MHz Validation/Area Scan (61x121x1): Measurement grid: dx=15mm, dy=15mm

Maximum value of SAR (interpolated) = 1.04 mW/g

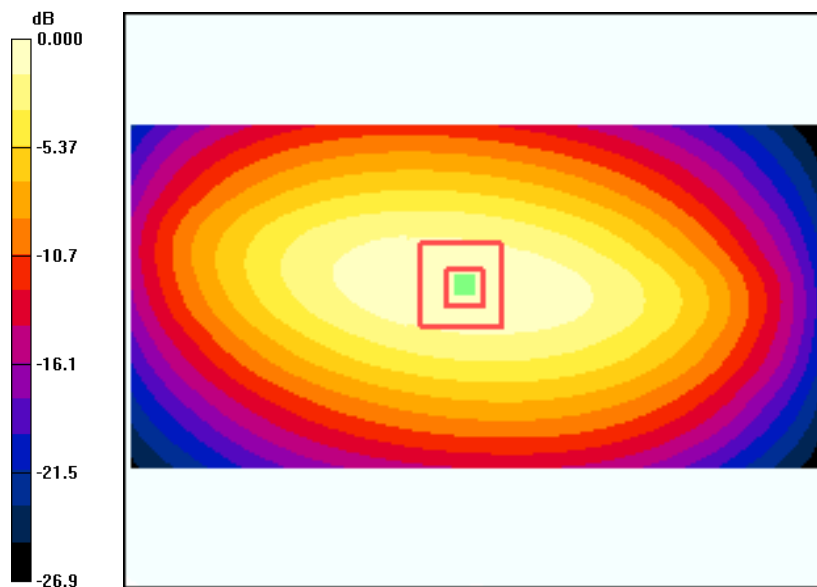
835MHz Validation/Zoom Scan (7x7x7)/Cube 0: Measurement grid: dx=5mm, dy=5mm, dz=5mm

Reference Value = 35.3 V/m; Power Drift = -0.196 dB

Peak SAR (extrapolated) = 1.33 W/kg

SAR(1 g) = 0.930 mW/g; SAR(10 g) = 0.610 mW/g

Maximum value of SAR (measured) = 1.01 mW/g



0 dB = 1.04mW/g

Applicant:	Kyocera
FCC ID:	V65C5155
Report #:	CT-C5155-9A-0312-R0

Test Laboratory: Comptest/Kyocera

Date: 03/19/2012

1900MHz Validation @ 20dBm Probe 3036, DAE 675 and Dipole 5d016

Communication System: CW, Frequency: 1900 MHz, Duty Cycle: 1:1

Medium: HSL1900, Medium parameters used (interpolated): $f = 1900$ MHz; $\sigma = 1.43$ mho/m; $\epsilon_r = 38.1$; $\rho = 1000$ kg/m³

Phantom: SAM 12, Phantom section: Flat Section

DASY4 Configuration:

Probe: ES3DV3 - SN3036, ConvF(5.06, 5.06, 5.06), Calibrated: 5/11/2011

Sensor-Surface: 4mm (Mechanical Surface Detection),

Electronics: DAE4 Sn675, Calibrated: 5/5/2011

Measurement SW: DASY4, V4.7 Build 80

Postprocessing SW: SEMCAD, V1.8 Build 186

Temperature:

Room T = 21.8 \pm 1 deg C, Liquid T = 22.0 \pm 1 deg C

1900MHz Validation @20dBm/Area Scan (61x61x1): Measurement grid: dx=15mm, dy=15mm

Maximum value of SAR (interpolated) = 4.80 mW/g

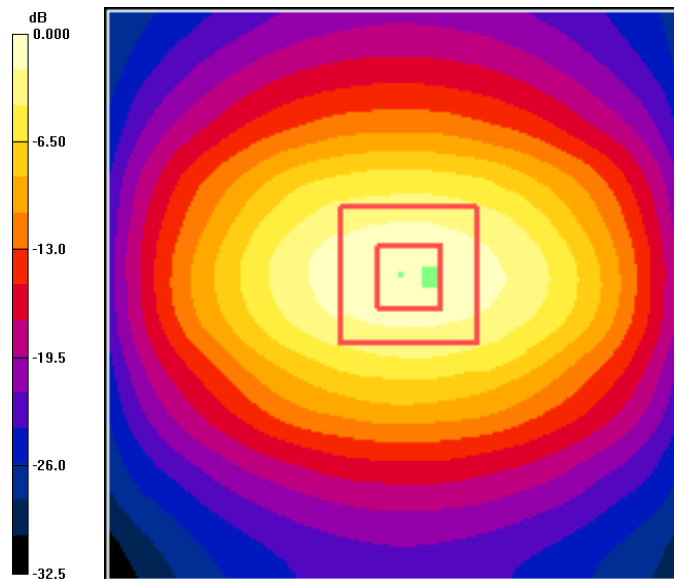
1900MHz Validation @20dBm/Zoom Scan (7x7x7)/Cube 0: Measurement grid: dx=5mm, dy=5mm, dz=5mm

Reference Value = 54.8 V/m; Power Drift = 0.008 dB

Peak SAR (extrapolated) = 7.39 W/kg

SAR(1 g) = 3.99 mW/g; SAR(10 g) = 2.07 mW/g

Maximum value of SAR (measured) = 4.49 mW/g



0 dB = 4.80mW/g

Applicant:	Kyocera
FCC ID:	V65C5155
Report #:	CT-C5155-9A-0312-R0

Test Laboratory: Comptest/Kyocera

Date: 03/20/2012

1900MHz Validation @ 20dBm Probe 3036, DAE 675 and Dipole 5d016

Communication System: CW, Frequency: 1900 MHz, Duty Cycle: 1:1

Medium: HSL1900, Medium parameters used (interpolated): $f = 1900$ MHz; $\sigma = 1.46$ mho/m; $\epsilon_r = 38.5$; $\rho = 1000$ kg/m³

Phantom: SAM 12, Phantom section: Flat Section

DASY4 Configuration:

Probe: ES3DV3 - SN3036, ConvF(5.06, 5.06, 5.06), Calibrated: 5/11/2011

Sensor-Surface: 4mm (Mechanical Surface Detection),

Electronics: DAE4 Sn675, Calibrated: 5/5/2011

Measurement SW: DASY4, V4.7 Build 80

Postprocessing SW: SEMCAD, V1.8 Build 186

Temperature:

Room T = 21.8 \pm 1 deg C, Liquid T = 22.0 \pm 1 deg C

1900MHz Validation @20dBm/Area Scan (61x61x1): Measurement grid: dx=15mm, dy=15mm

Maximum value of SAR (interpolated) = 4.67 mW/g

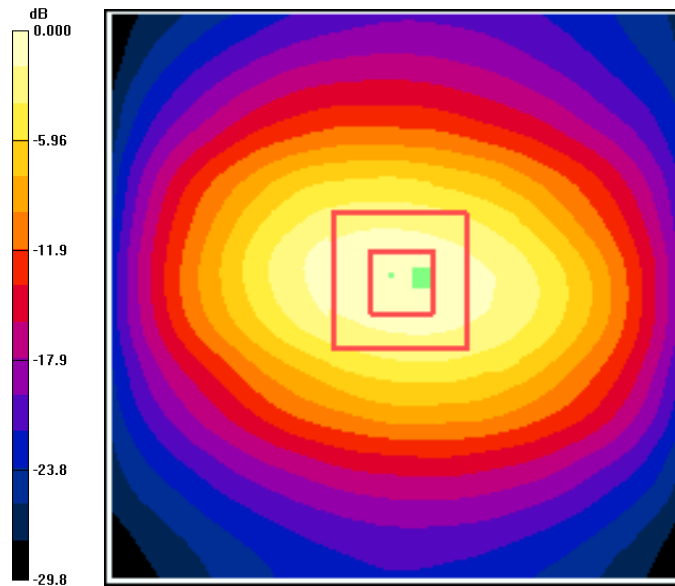
1900MHz Validation @20dBm/Zoom Scan (7x7x7)/Cube 0: Measurement grid: dx=5mm, dy=5mm, dz=5mm

Reference Value = 55.2 V/m; Power Drift = 0.069 dB

Peak SAR (extrapolated) = 7.51 W/kg

SAR(1 g) = 4.04 mW/g; SAR(10 g) = 2.09 mW/g

Maximum value of SAR (measured) = 4.53 mW/g



0 dB = 4.67mW/g



Applicant:	Kyocera
FCC ID:	V65C5155
Report #:	CT-C5155-9A-0312-R0

Interpolated SAR(x,y,z,f0)
SAR; Z Scan: Value Along Z, X=0, Y=0



Applicant:	Kyocera
FCC ID:	V65C5155
Report #:	CT-C5155-9A-0312-R0

Test Laboratory: Comptest/Kyocera

Date: 04/10/2012

1900Mhz Validation @ 20dBm Probe 3036, DAE 675 and Dipole 5d016

Communication System: CW, Frequency: 1900 MHz, Duty Cycle: 1:1

Medium: HSL1900,Medium parameters used (interpolated): $f = 1900$ MHz; $\sigma = 1.42$ mho/m; $\epsilon_r = 39$; $\rho = 1000$ kg/m³

Phantom: SAM 12,Phantom section: Flat Section

DASY4 Configuration:

Probe: ES3DV3 - SN3036, ConvF(5.06, 5.06, 5.06), Calibrated: 5/11/2011

Sensor-Surface: 4mm (Mechanical Surface Detection),

Electronics: DAE4 Sn675,Calibrated: 5/5/2011

Measurement SW: DASY4, V4.7 Build 80

Postprocessing SW: SEMCAD, V1.8 Build 186

Temperature:

Room T = 21.8 \pm 1 deg C, Liquid T = 22.0 \pm 1 deg C

1900MHz Validation @20dBm/Area Scan (61x61x1): Measurement grid: dx=15mm, dy=15mm

Maximum value of SAR (interpolated) = 4.92 mW/g

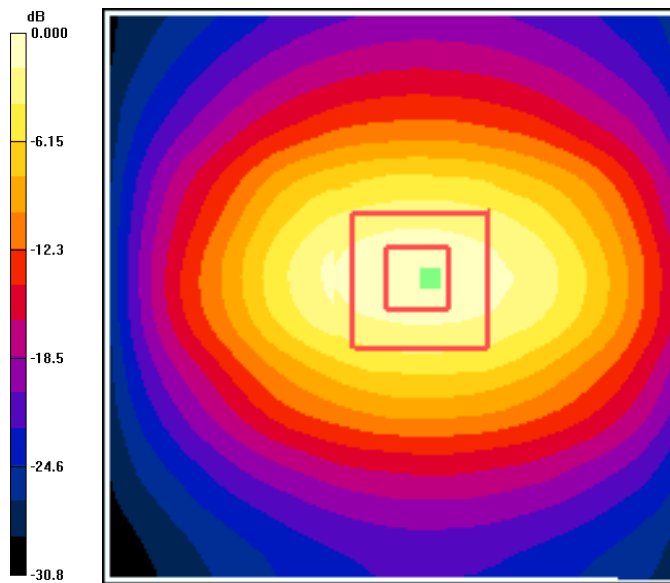
1900MHz Validation @20dBm/Zoom Scan (7x7x7)/Cube 0: Measurement grid: dx=5mm, dy=5mm, dz=5mm

Reference Value = 54.5 V/m; Power Drift = -0.007 dB

Peak SAR (extrapolated) = 7.48 W/kg

SAR(1 g) = 4.03 mW/g; SAR(10 g) = 2.09 mW/g

Maximum value of SAR (measured) = 4.51 mW/g



0 dB = 4.92mW/g

Applicant:	Kyocera
FCC ID:	V65C5155
Report #:	CT-C5155-9A-0312-R0

Test Laboratory: Comptest/Kyocera

Date: 04/05/2012

2450MHz Validation, Probe #3078, DAE #530, Dipole #776

Communication System: CW, Frequency: 2450 MHz, Duty Cycle: 1:1

Medium: HSL2450, Medium parameters used: $f = 2450$ MHz; $\sigma = 1.86$ mho/m; $\epsilon_r = 38.1$; $\rho = 1000$ kg/m³

Phantom: SAM 12, Phantom section: Flat Section

DASY4 Configuration:

Probe: ES3DV3 - SN3078, ConvF(4.36, 4.36, 4.36), Calibrated: 9/19/2011

Sensor-Surface: 4mm (Mechanical Surface Detection),

Electronics: DAE4 Sn530, Calibrated: 5/5/2011

Measurement SW: DASY4, V4.7 Build 80

Postprocessing SW: SEMCAD, V1.8 Build 186

Temperature:

Room T = 21.8 \pm 1 deg C, Liquid T = 22.0 \pm 1 deg C

2450MHz Validation @20dBm/Area Scan (61x71x1): Measurement grid: dx=15mm, dy=15mm

Maximum value of SAR (interpolated) = 7.17 mW/g

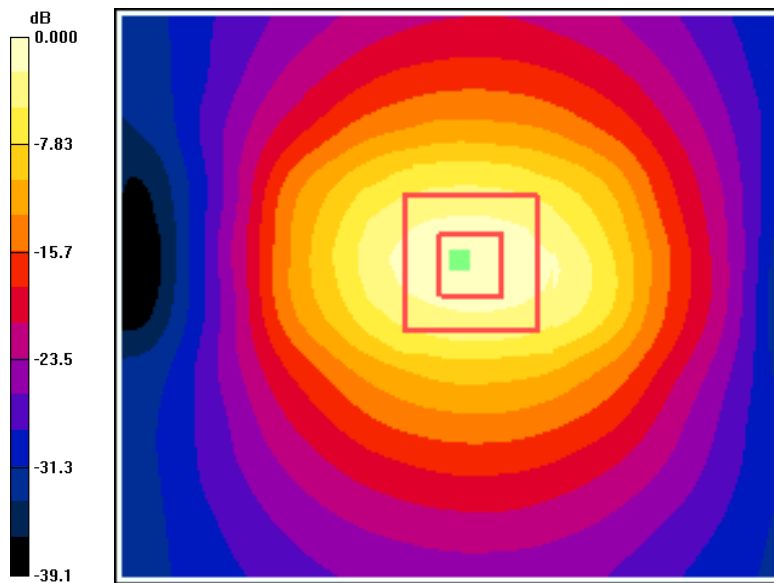
2450MHz Validation @20dBm/Zoom Scan (7x7x7)/Cube 0: Measurement grid: dx=5mm, dy=5mm, dz=5mm

Reference Value = 53.3 V/m; Power Drift = -0.161 dB

Peak SAR (extrapolated) = 12.5 W/kg

SAR(1 g) = 5.62 mW/g; SAR(10 g) = 2.52 mW/g

Maximum value of SAR (measured) = 6.35 mW/g

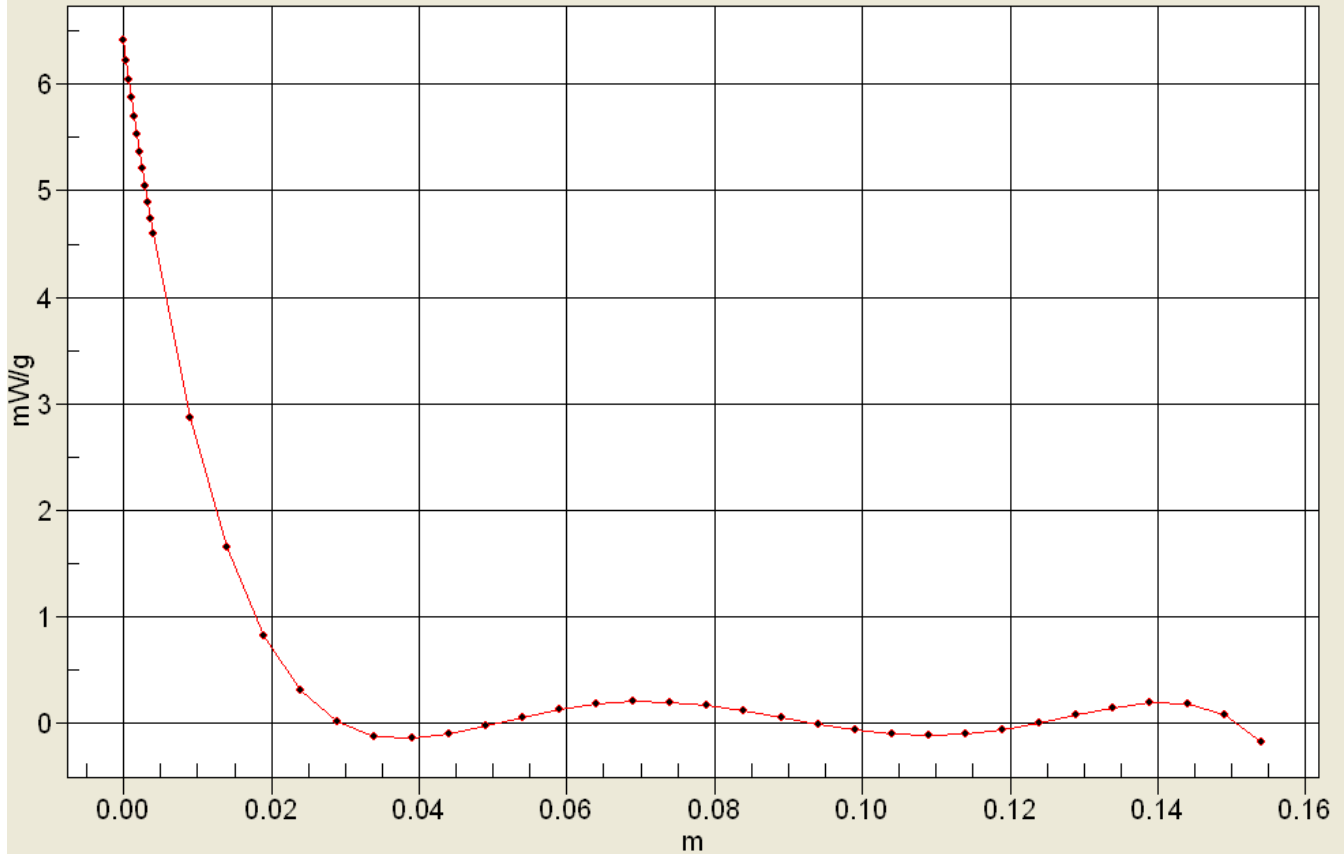


0 dB = 7.17mW/g



Applicant:	Kyocera
FCC ID:	V65C5155
Report #:	CT-C5155-9A-0312-R0

Interpolated SAR(x,y,z,f0)
SAR; Z Scan: Value Along Z, X=0, Y=0





Applicant:	Kyocera
FCC ID:	V65C5155
Report #:	CT-C5155-9A-0312-R0

Validation for BODY

Applicant:	Kyocera
FCC ID:	V65C5155
Report #:	CT-C5155-9A-0312-R0

Test Laboratory: Comptest/Kyocera

Date: 04/06/2012

835MHz Validation (in Muscle), Probe #3035, DAE #602, Dipole #467

Communication System: CW, Frequency: 835 MHz, Duty Cycle: 1:1

Medium: M800, Medium parameters used: $f = 835 \text{ MHz}$; $\sigma = 0.94 \text{ mho/m}$; $\epsilon_r = 53.8$; $\rho = 1000 \text{ kg/m}^3$

Phantom: SAM 12, Phantom section: Flat Section

DASY4 Configuration:

Probe: ES3DV3 - SN3035, ConvF(6.09, 6.09, 6.09), Calibrated: 2/22/2012

Sensor-Surface: 4mm (Mechanical Surface Detection),

Electronics: DAE4 Sn602, Calibrated: 9/16/2011

Measurement SW: DASY4, V4.7 Build 80

Postprocessing SW: SEMCAD, V1.8 Build 186

Temperature:

Room T = 21.8 \pm 1 deg C, Liquid T = 22.0 \pm 1 deg C

835MHz/Area Scan (51x121x1): Measurement grid: dx=15mm, dy=15mm

Maximum value of SAR (interpolated) = 1.11 mW/g

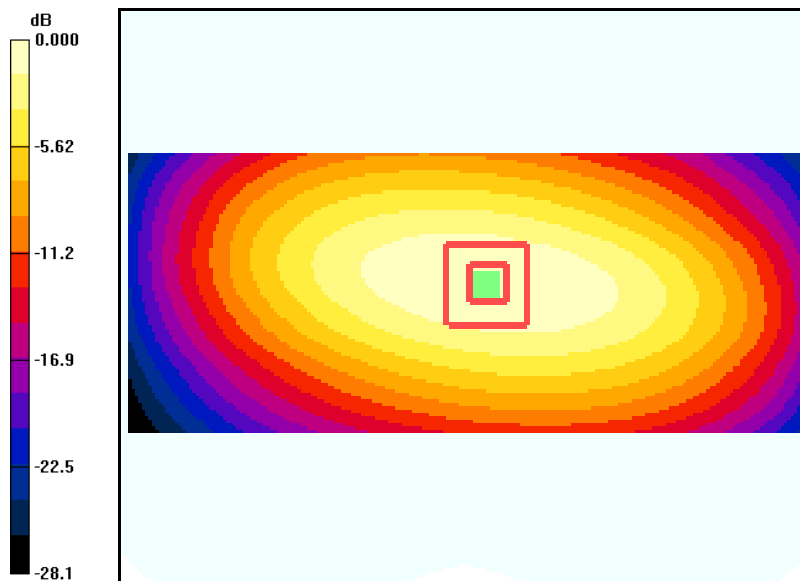
835MHz/Zoom Scan (7x7x7)/Cube 0: Measurement grid: dx=5mm, dy=5mm, dz=5mm

Reference Value = 34.8 V/m; Power Drift = 0.025 dB

Peak SAR (extrapolated) = 1.52 W/kg

SAR(1 g) = 1.04 mW/g; SAR(10 g) = 0.688 mW/g

Maximum value of SAR (measured) = 1.12 mW/g

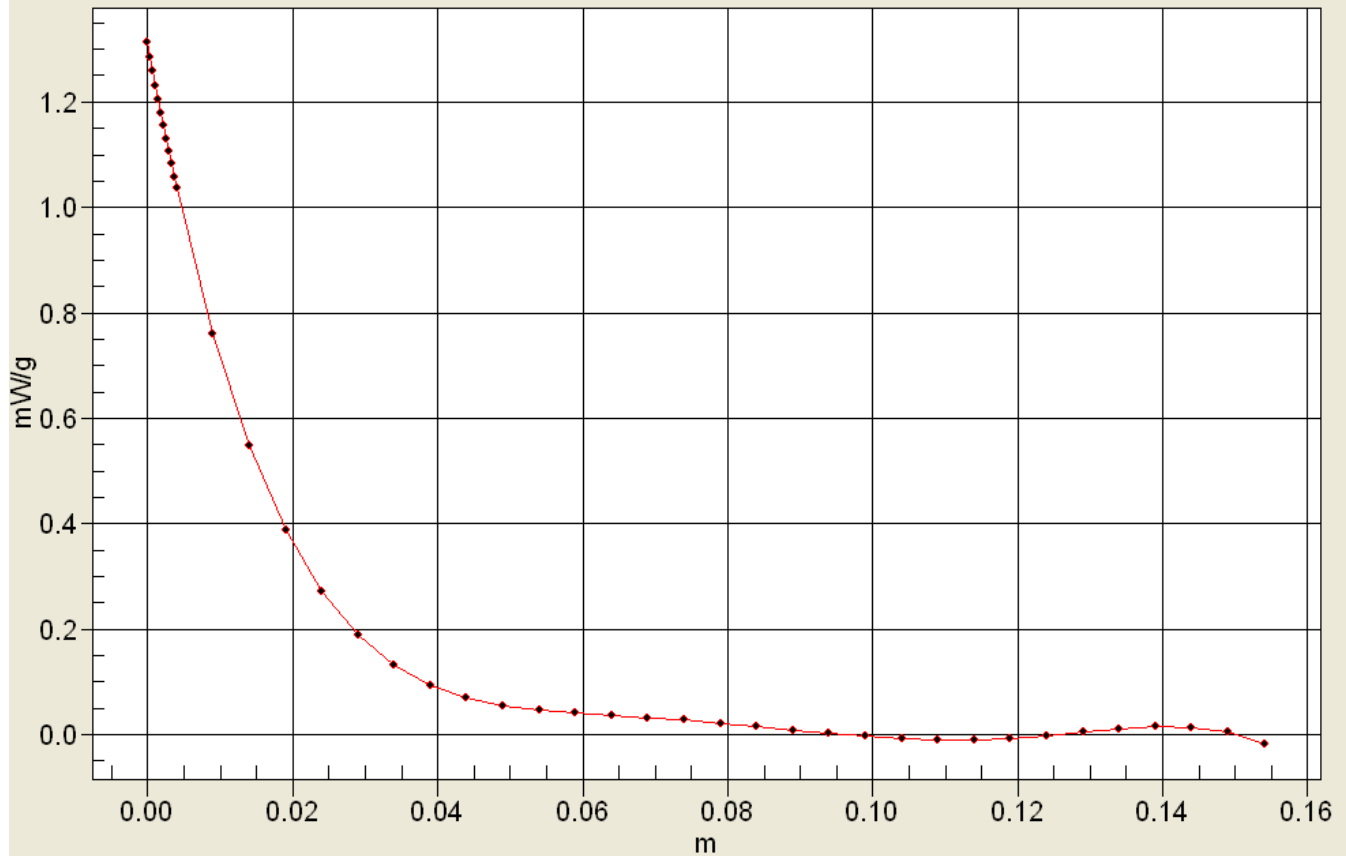


0 dB = 1.11mW/g



Applicant:	Kyocera
FCC ID:	V65C5155
Report #:	CT-C5155-9A-0312-R0

Interpolated SAR(x,y,z,f0)
SAR; Z Scan: Value Along Z, X=0, Y=0



Applicant:	Kyocera
FCC ID:	V65C5155
Report #:	CT-C5155-9A-0312-R0

Test Laboratory: Comptest/Kyocera

Date: 04/09/2012

835MHz Validation (in Muscle), Probe #3035, DAE #602, Dipole #467

Communication System: CW, Frequency: 835 MHz, Duty Cycle: 1:1

Medium: M800, Medium parameters used: $f = 835 \text{ MHz}$; $\sigma = 0.94 \text{ mho/m}$; $\epsilon_r = 53.3$; $\rho = 1000 \text{ kg/m}^3$

Phantom: SAM 12, Phantom section: Flat Section

DASY4 Configuration:

Probe: ES3DV3 - SN3035, ConvF(6.09, 6.09, 6.09), Calibrated: 2/22/2012

Sensor-Surface: 4mm (Mechanical Surface Detection),

Electronics: DAE4 Sn602, Calibrated: 9/16/2011

Measurement SW: DASY4, V4.7 Build 80

Postprocessing SW: SEMCAD, V1.8 Build 186

Temperature:

Room T = 21.8 \pm 1 deg C, Liquid T = 22.0 \pm 1 deg C

835MHz/Area Scan (51x121x1): Measurement grid: dx=15mm, dy=15mm

Maximum value of SAR (interpolated) = 1.12 mW/g

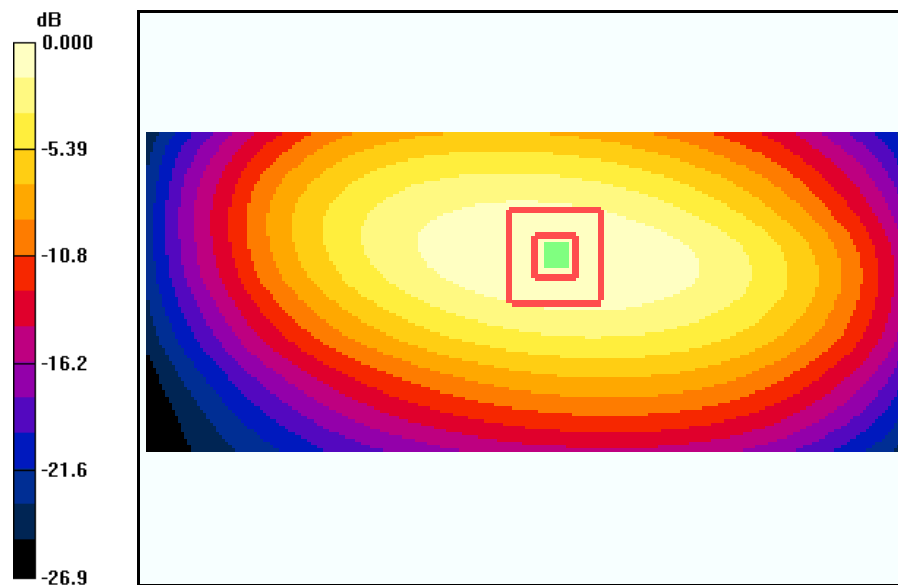
835MHz/Zoom Scan (7x7x7)/Cube 0: Measurement grid: dx=5mm, dy=5mm, dz=5mm

Reference Value = 32.7 V/m; Power Drift = -0.020 dB

Peak SAR (extrapolated) = 1.50 W/kg

SAR(1 g) = 1.03 mW/g; SAR(10 g) = 0.686 mW/g

Maximum value of SAR (measured) = 1.11 mW/g



0 dB = 1.12mW/g

Applicant:	Kyocera
FCC ID:	V65C5155
Report #:	CT-C5155-9A-0312-R0

Test Laboratory: Comptest/Kyocera

Date: 04/10/2012

835MHz Validation (in Muscle), Probe #3035, DAE #602, Dipole #467

Communication System: CW, Frequency: 835 MHz, Duty Cycle: 1:1

Medium: M800, Medium parameters used: $f = 835 \text{ MHz}$; $\sigma = 0.94 \text{ mho/m}$; $\epsilon_r = 53.7$; $\rho = 1000 \text{ kg/m}^3$

Phantom: SAM 12, Phantom section: Flat Section

DASY4 Configuration:

Probe: ES3DV3 - SN3035, ConvF(6.09, 6.09, 6.09), Calibrated: 2/22/2012

Sensor-Surface: 4mm (Mechanical Surface Detection),

Electronics: DAE4 Sn602, Calibrated: 9/16/2011

Measurement SW: DASY4, V4.7 Build 80

Postprocessing SW: SEMCAD, V1.8 Build 186

Temperature:

Room T = 21.8 \pm 1 deg C, Liquid T = 22.0 \pm 1 deg C

835MHz/Area Scan (51x121x1): Measurement grid: dx=15mm, dy=15mm

Maximum value of SAR (interpolated) = 1.12 mW/g

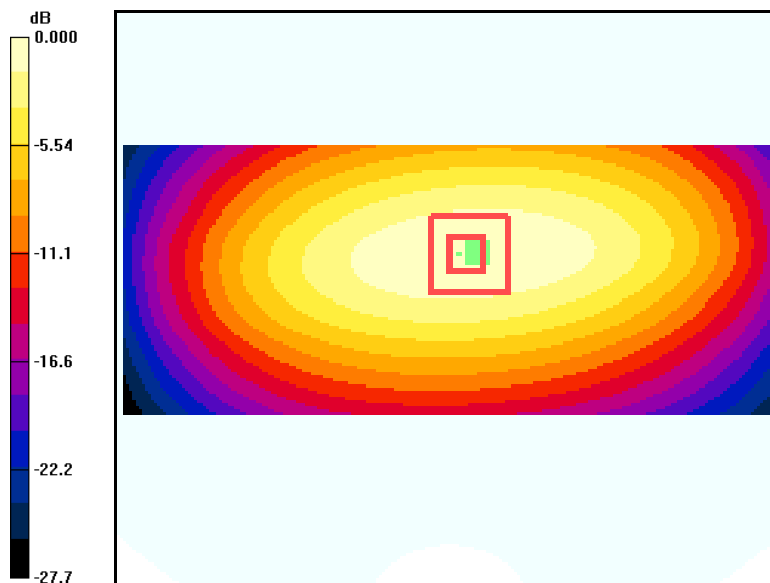
835MHz/Zoom Scan (7x7x7)/Cube 0: Measurement grid: dx=5mm, dy=5mm, dz=5mm

Reference Value = 34.0 V/m; Power Drift = 0.013 dB

Peak SAR (extrapolated) = 1.50 W/kg

SAR(1 g) = 1.03 mW/g; SAR(10 g) = 0.682 mW/g

Maximum value of SAR (measured) = 1.11 mW/g



Applicant:	Kyocera
FCC ID:	V65C5155
Report #:	CT-C5155-9A-0312-R0

Test Laboratory: Comptest/Kyocera

Date: 04/11/2012

835MHz Validation (in Muscle), Probe #3035, DAE #602, Dipole #467

Communication System: CW, Frequency: 835 MHz, Duty Cycle: 1:1

Medium: M800, Medium parameters used: $f = 835 \text{ MHz}$; $\sigma = 0.94 \text{ mho/m}$; $\epsilon_r = 53.8$; $\rho = 1000 \text{ kg/m}^3$

Phantom: SAM 12, Phantom section: Flat Section

DASY4 Configuration:

Probe: ES3DV3 - SN3035, ConvF(6.09, 6.09, 6.09), Calibrated: 2/22/2012

Sensor-Surface: 4mm (Mechanical Surface Detection),

Electronics: DAE4 Sn602, Calibrated: 9/16/2011

Measurement SW: DASY4, V4.7 Build 80

Postprocessing SW: SEMCAD, V1.8 Build 186

Temperature:

Room T = 21.8 \pm 1 deg C, Liquid T = 22.0 \pm 1 deg C

835MHz/Area Scan (51x121x1): Measurement grid: dx=15mm, dy=15mm

Maximum value of SAR (interpolated) = 1.13 mW/g

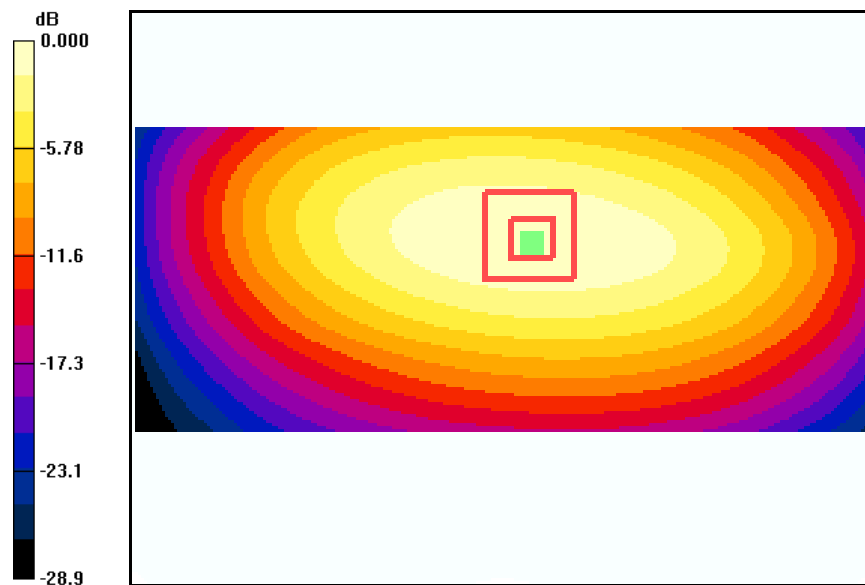
835MHz/Zoom Scan (7x7x7)/Cube 0: Measurement grid: dx=5mm, dy=5mm, dz=5mm

Reference Value = 32.1 V/m; Power Drift = 0.057 dB

Peak SAR (extrapolated) = 1.53 W/kg

SAR(1 g) = 1.04 mW/g; SAR(10 g) = 0.691 mW/g

Maximum value of SAR (measured) = 1.13 mW/g



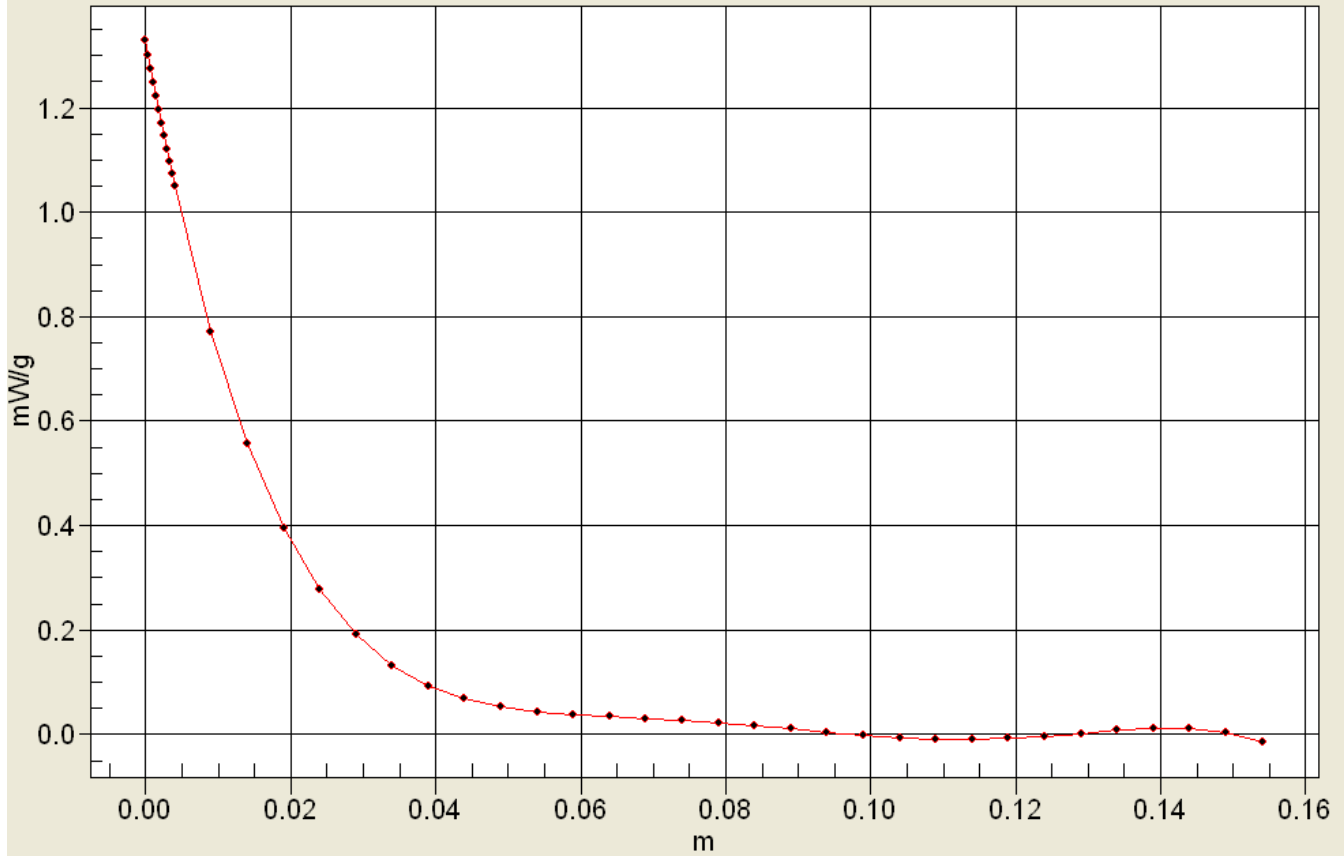
0 dB = 1.13mW/g



Applicant:	Kyocera
FCC ID:	V65C5155
Report #:	CT-C5155-9A-0312-R0

Interpolated SAR(x,y,z,f0)

SAR; Z Scan: Value Along Z, X=0, Y=0



Applicant:	Kyocera
FCC ID:	V65C5155
Report #:	CT-C5155-9A-0312-R0

Test Laboratory: Comptest/Kyocera

Date: 03/26/2012

1900MHz Validation (Muscle) @ 20dBm Probe 3036, DAE 675 and Dipole 5d016

Communication System: CW, Frequency: 1900 MHz, Duty Cycle: 1:1

Medium: M1800, Medium parameters used (interpolated): $f = 1900$ MHz; $\sigma = 1.54$ mho/m; $\epsilon_r = 51.9$; $\rho = 1000$ kg/m³

Phantom: SAM 12, Phantom section: Flat Section

DASY4 Configuration:

Probe: ES3DV3 - SN3036, ConvF(4.57, 4.57, 4.57), Calibrated: 5/11/2011

Sensor-Surface: 4mm (Mechanical Surface Detection),

Electronics: DAE4 Sn675, Calibrated: 5/5/2011

Measurement SW: DASY4, V4.7 Build 80

Postprocessing SW: SEMCAD, V1.8 Build 186

Temperature:

Room T = 21.8 \pm 1 deg C, Liquid T = 22.0 \pm 1 deg C

1900MHz Validation @20dBm/Area Scan (61x61x1): Measurement grid: dx=15mm, dy=15mm

Maximum value of SAR (interpolated) = 4.91 mW/g

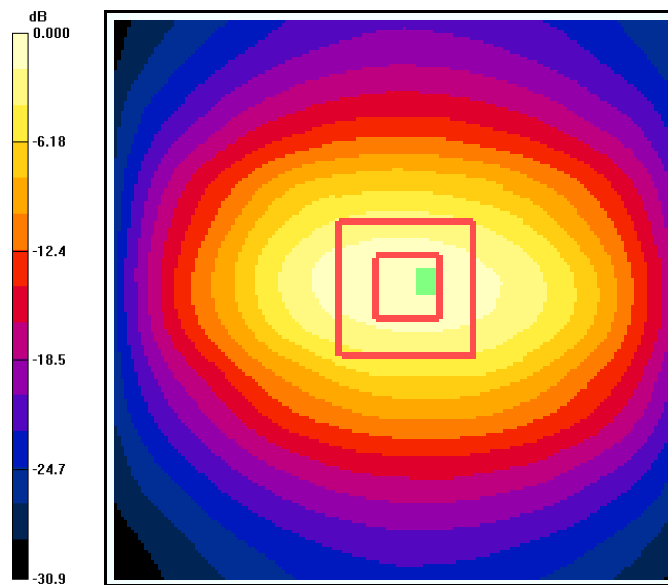
1900MHz Validation @20dBm/Zoom Scan (7x7x7)/Cube 0: Measurement grid: dx=5mm, dy=5mm, dz=5mm

Reference Value = 54.2 V/m; Power Drift = 0.022 dB

Peak SAR (extrapolated) = 7.44 W/kg

SAR(1 g) = 4.11 mW/g; SAR(10 g) = 2.15 mW/g

Maximum value of SAR (measured) = 4.66 mW/g



0 dB = 4.91mW/g

Applicant:	Kyocera
FCC ID:	V65C5155
Report #:	CT-C5155-9A-0312-R0

Test Laboratory: Comptest/Kyocera

Date: 03/27/2012

1900MHz Validation (Muscle) @ 20dBm Probe 3036, DAE 675 and Dipole 5d016

Communication System: CW, Frequency: 1900 MHz, Duty Cycle: 1:1

Medium: M1800, Medium parameters used (interpolated): $f = 1900$ MHz; $\sigma = 1.53$ mho/m; $\epsilon_r = 51.8$; $\rho = 1000$ kg/m³

Phantom: SAM 12, Phantom section: Flat Section

DASY4 Configuration:

Probe: ES3DV3 - SN3036, ConvF(4.57, 4.57, 4.57), Calibrated: 5/11/2011

Sensor-Surface: 4mm (Mechanical Surface Detection),

Electronics: DAE4 Sn675, Calibrated: 5/5/2011

Measurement SW: DASY4, V4.7 Build 80

Postprocessing SW: SEMCAD, V1.8 Build 186

Temperature:

Room T = 21.8 °C ± 1 deg C, Liquid T = 22.0 °C ± 1 deg C

1900MHz Validation @20dBm/Area Scan (61x61x1): Measurement grid: dx=15mm, dy=15mm

Maximum value of SAR (interpolated) = 5.28 mW/g

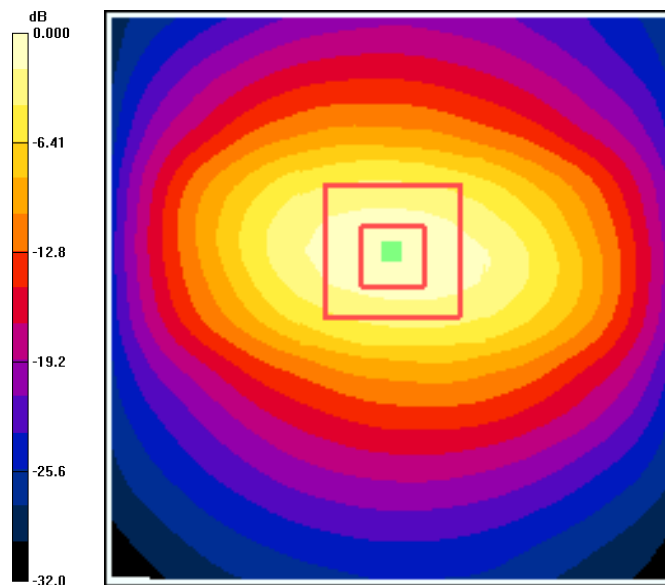
1900MHz Validation @20dBm/Zoom Scan (7x7x7)/Cube 0: Measurement grid: dx=5mm, dy=5mm, dz=5mm

Reference Value = 47.3 V/m; Power Drift = 0.125 dB

Peak SAR (extrapolated) = 7.73 W/kg

SAR(1 g) = 4.27 mW/g; SAR(10 g) = 2.23 mW/g

Maximum value of SAR (measured) = 4.87 mW/g

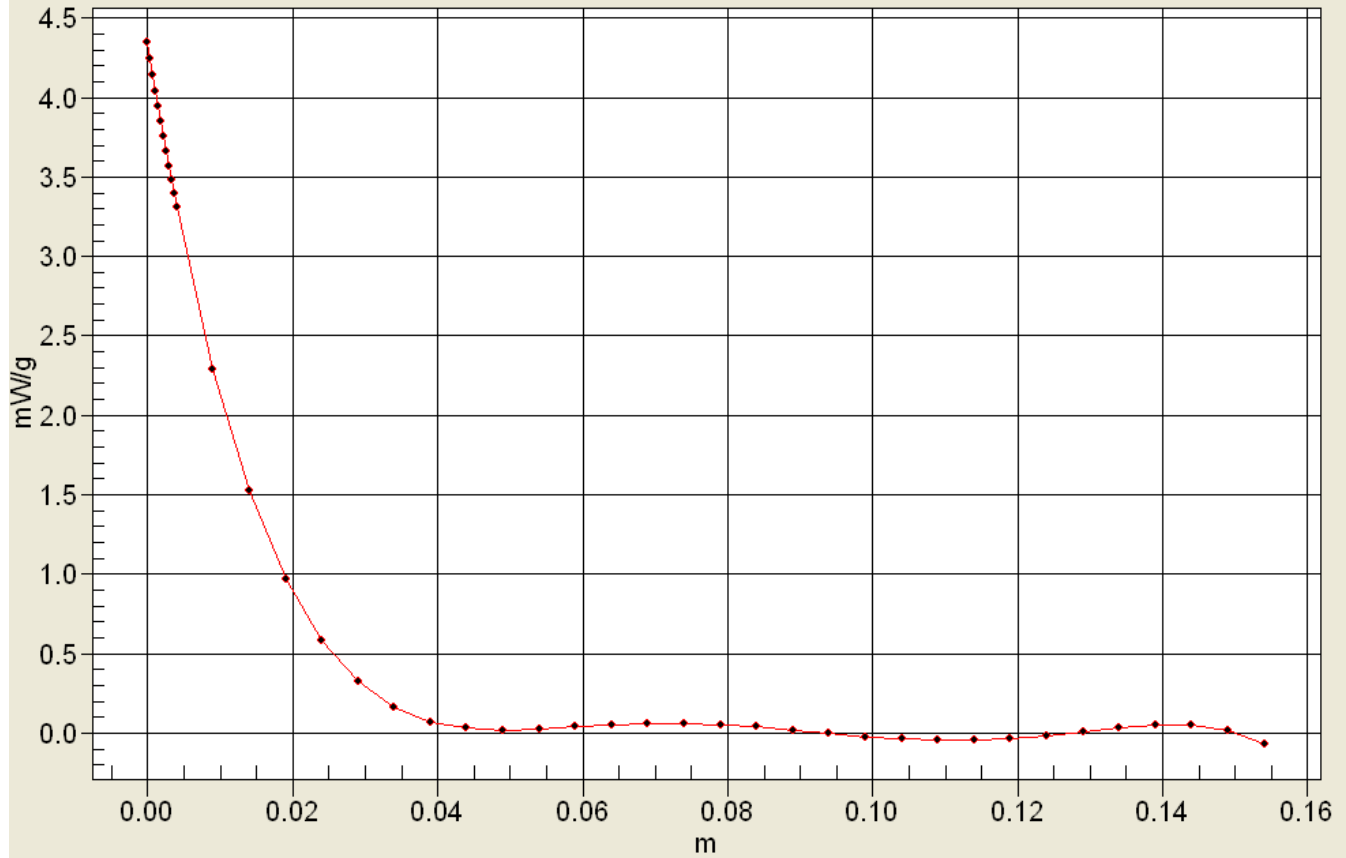




Applicant:	Kyocera
FCC ID:	V65C5155
Report #:	CT-C5155-9A-0312-R0

Interpolated SAR(x,y,z,f0)

SAR; Z Scan: Value Along Z, X=0, Y=0



Applicant:	Kyocera
FCC ID:	V65C5155
Report #:	CT-C5155-9A-0312-R0

Test Laboratory: Comptest/Kyocera

Date: 04/03/2012

1900MHz Validation (Muscle) @ 20dBm Probe 3036, DAE 675 and Dipole 5d016

Communication System: CW, Frequency: 1900 MHz, Duty Cycle: 1:1

Medium: M1800, Medium parameters used (interpolated): $f = 1900$ MHz; $\sigma = 1.51$ mho/m; $\epsilon_r = 51.2$; $\rho = 1000$ kg/m³

Phantom: SAM 12, Phantom section: Flat Section

DASY4 Configuration:

Probe: ES3DV3 - SN3036, ConvF(4.57, 4.57, 4.57), Calibrated: 5/11/2011

Sensor-Surface: 4mm (Mechanical Surface Detection),

Electronics: DAE4 Sn675, Calibrated: 5/5/2011

Measurement SW: DASY4, V4.7 Build 80

Postprocessing SW: SEMCAD, V1.8 Build 186

Temperature:

Room T = 21.8 °C ± 1 deg C, Liquid T = 22.0 °C ± 1 deg C

1900MHz Validation @20dBm/Area Scan (61x61x1): Measurement grid: dx=15mm, dy=15mm

Maximum value of SAR (interpolated) = 4.92 mW/g

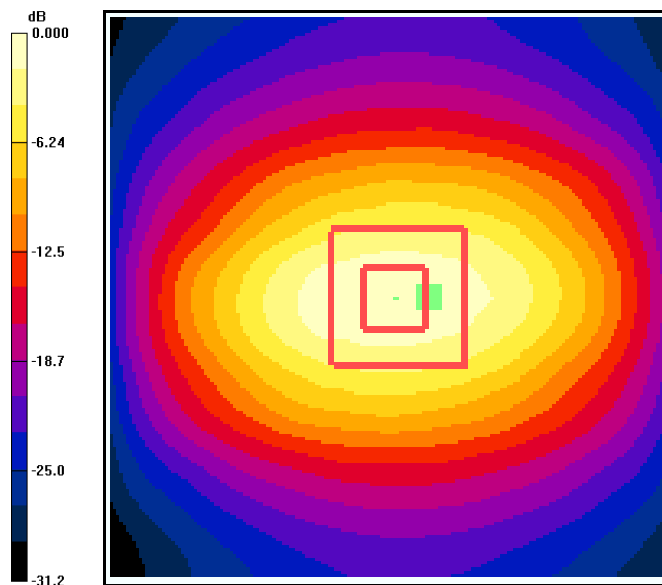
1900MHz Validation @20dBm/Zoom Scan (7x7x7)/Cube 0: Measurement grid: dx=5mm, dy=5mm, dz=5mm

Reference Value = 57.5 V/m; Power Drift = -0.074 dB

Peak SAR (extrapolated) = 7.53 W/kg

SAR(1 g) = 4.16 mW/g; SAR(10 g) = 2.17 mW/g

Maximum value of SAR (measured) = 4.76 mW/g



0 dB = 4.92mW/g

Applicant:	Kyocera
FCC ID:	V65C5155
Report #:	CT-C5155-9A-0312-R0

Test Laboratory: Comptest/Kyocera

Date: 04/04/2012

1900Mhz Validation (Muscle) @ 20dBm Probe 3036, DAE 675 and Dipole 5d016

Communication System: CW, Frequency: 1900 MHz, Duty Cycle: 1:1

Medium: M1800,Medium parameters used (interpolated): $f = 1900$ MHz; $\sigma = 1.5$ mho/m; $\epsilon_r = 51.3$; $\rho = 1000$ kg/m³

Phantom: SAM 12,Phantom section: Flat Section

DASY4 Configuration:

Probe: ES3DV3 - SN3036, ConvF(4.57, 4.57, 4.57), Calibrated: 5/11/2011

Sensor-Surface: 4mm (Mechanical Surface Detection),

Electronics: DAE4 Sn675,Calibrated: 5/5/2011

Measurement SW: DASY4, V4.7 Build 80

Postprocessing SW: SEMCAD, V1.8 Build 186

Temperature:

Room T = 21.8 \pm 1 deg C, Liquid T = 22.0 \pm 1 deg C

1900MHz Validation @20dBm/Area Scan (61x61x1): Measurement grid: dx=15mm, dy=15mm

Maximum value of SAR (interpolated) = 4.95 mW/g

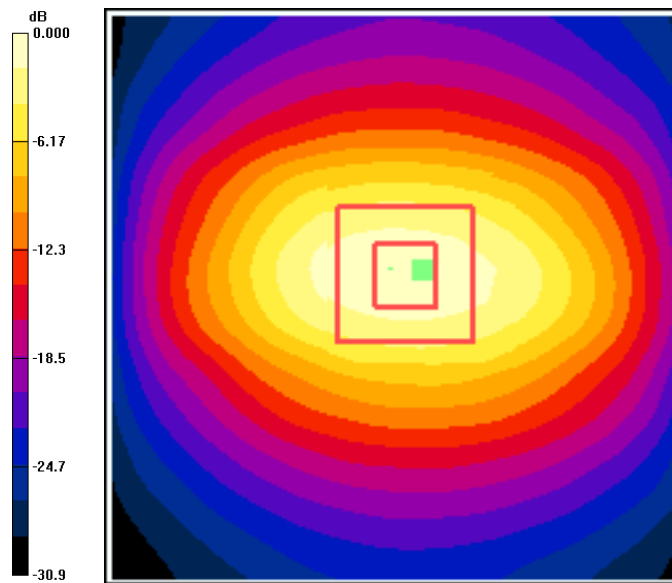
1900MHz Validation @20dBm/Zoom Scan (7x7x7)/Cube 0: Measurement grid: dx=5mm, dy=5mm, dz=5mm

Reference Value = 54.7 V/m; Power Drift = -0.189 dB

Peak SAR (extrapolated) = 7.30 W/kg

SAR(1 g) = 4.06 mW/g; SAR(10 g) = 2.13 mW/g

Maximum value of SAR (measured) = 4.55 mW/g



0 dB = 4.95mW/g

Applicant:	Kyocera
FCC ID:	V65C5155
Report #:	CT-C5155-9A-0312-R0

Test Laboratory: Comptest/Kyocera

Date: 03/27/2012

2450MHz Validation (in Muscle), Probe #3078, DAE #530, Dipole #776

Communication System: CW, Frequency: 2450 MHz, Duty Cycle: 1:1

Medium: M2450, Medium parameters used (interpolated): $f = 2450$ MHz; $\sigma = 2.03$ mho/m; $\epsilon_r = 51$; $\rho = 1000$ kg/m³

Phantom: SAM 12, Phantom section: Flat Section

DASY4 Configuration:

Probe: ES3DV3 - SN3078, ConvF(4.16, 4.16, 4.16), Calibrated: 9/19/2011

Sensor-Surface: 4mm (Mechanical Surface Detection),

Electronics: DAE4 Sn530, Calibrated: 5/5/2011

Measurement SW: DASY4, V4.7 Build 80

Postprocessing SW: SEMCAD, V1.8 Build 186

Temperature:

Room T = 21.8 \pm 1 deg C, Liquid T = 22.0 \pm 1 deg C

2450MHz Validation @20dBm/Area Scan (61x71x1): Measurement grid: dx=15mm, dy=15mm

Maximum value of SAR (interpolated) = 7.57 mW/g

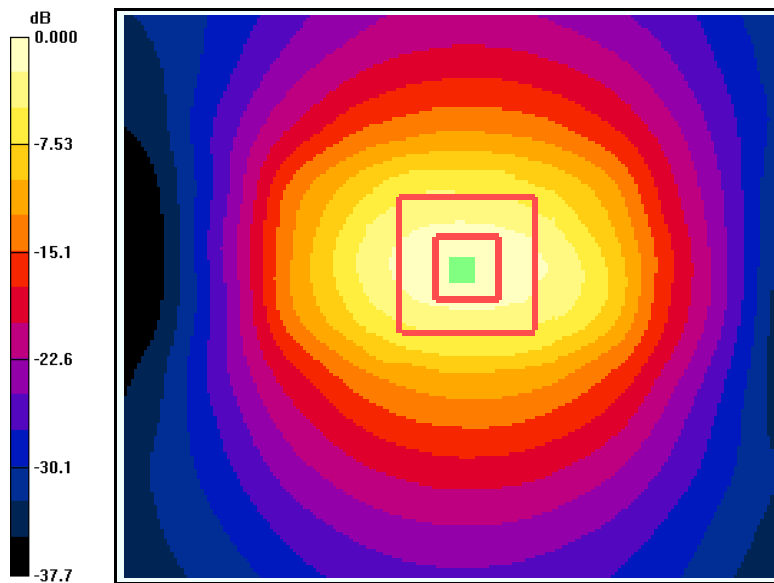
2450MHz Validation @20dBm/Zoom Scan (7x7x7)/Cube 0: Measurement grid: dx=5mm, dy=5mm, dz=5mm

Reference Value = 52.8 V/m; Power Drift = -0.183 dB

Peak SAR (extrapolated) = 12.8 W/kg

SAR(1 g) = 5.89 mW/g; SAR(10 g) = 2.68 mW/g

Maximum value of SAR (measured) = 6.75 mW/g

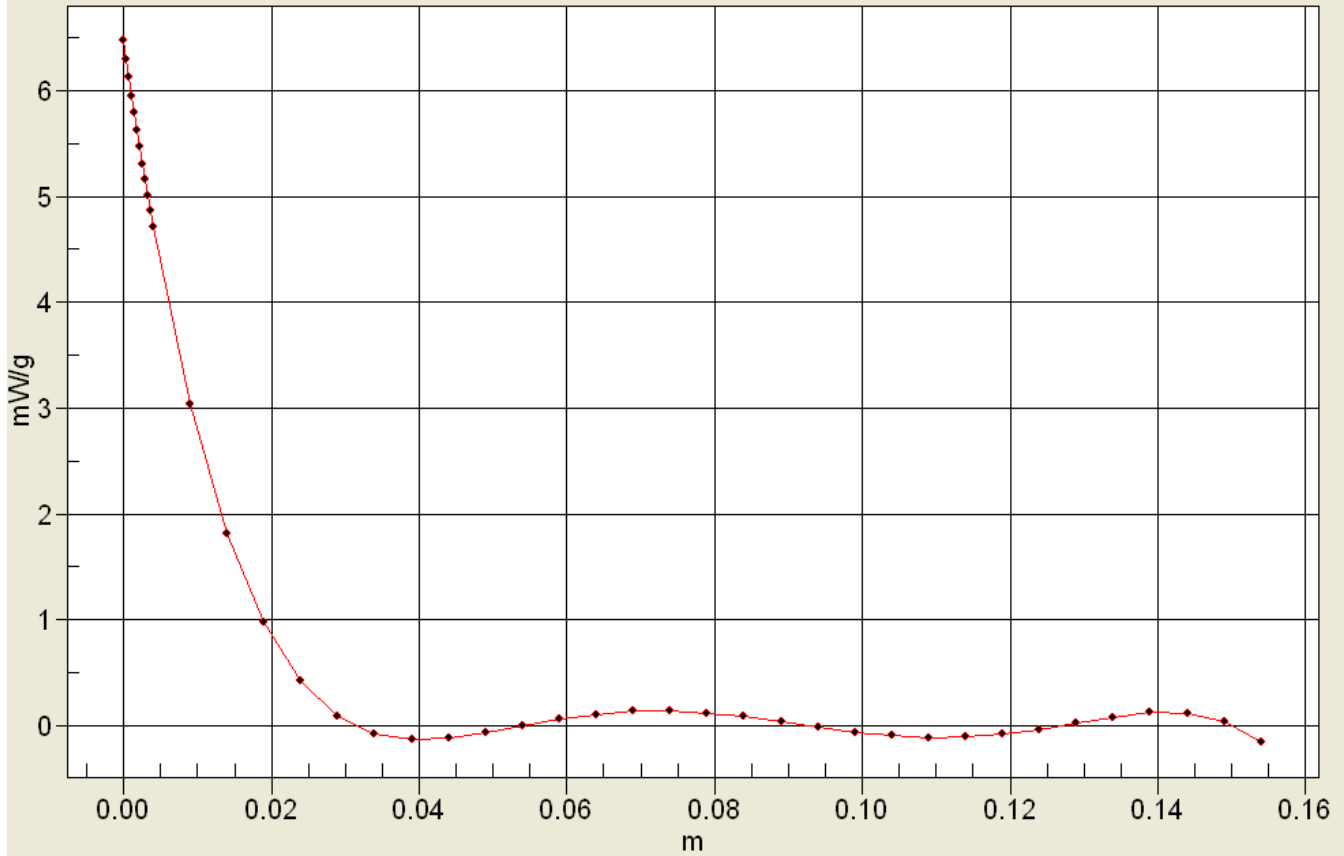


0 dB = 7.57mW/g



Applicant:	Kyocera
FCC ID:	V65C5155
Report #:	CT-C5155-9A-0312-R0

Interpolated SAR(x,y,z,f0)
SAR; Z Scan: Value Along Z, X=0, Y=0



Applicant:	Kyocera
FCC ID:	V65C5155
Report #:	CT-C5155-9A-0312-R0

Test Laboratory: Comptest/Kyocera

Date: 03/28/2012

2450MHz Validation (in Muscle), Probe #3078, DAE #530, Dipole #776

Communication System: CW, Frequency: 2450 MHz, Duty Cycle: 1:1

Medium: M2450, Medium parameters used (interpolated): $f = 2450$ MHz; $\sigma = 2$ mho/m; $\epsilon_r = 50.9$; $\rho = 1000$ kg/m³

Phantom: SAM 12, Phantom section: Flat Section

DASY4 Configuration:

Probe: ES3DV3 - SN3078, ConvF(4.16, 4.16, 4.16), Calibrated: 9/19/2011

Sensor-Surface: 4mm (Mechanical Surface Detection),

Electronics: DAE4 Sn530, Calibrated: 5/5/2011

Measurement SW: DASY4, V4.7 Build 80

Postprocessing SW: SEMCAD, V1.8 Build 186

Temperature:

Room T = 21.8 \pm 1 deg C, Liquid T = 22.0 \pm 1 deg C

2450MHz Validation @20dBm/Area Scan (61x71x1): Measurement grid: dx=15mm, dy=15mm

Maximum value of SAR (interpolated) = 7.43 mW/g

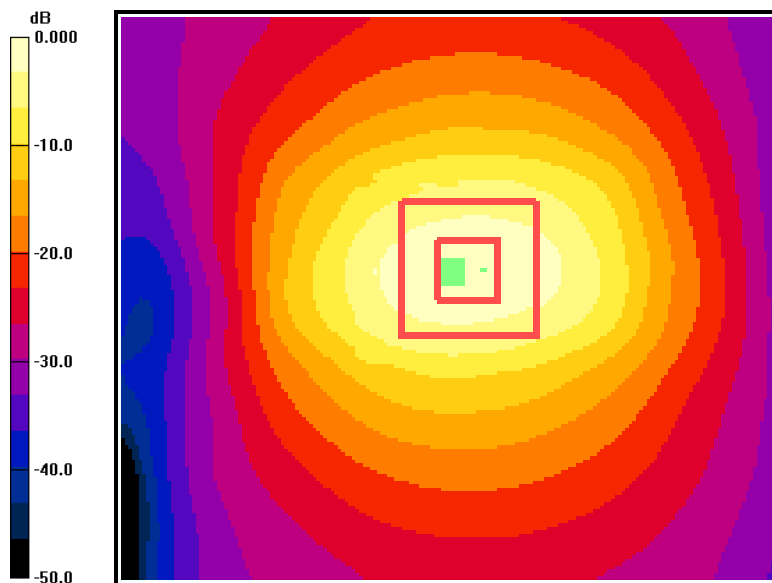
2450MHz Validation @20dBm/Zoom Scan (7x7x7)/Cube 0: Measurement grid: dx=5mm, dy=5mm, dz=5mm

Reference Value = 53.0 V/m; Power Drift = -0.004 dB

Peak SAR (extrapolated) = 12.7 W/kg

SAR(1 g) = 5.86 mW/g; SAR(10 g) = 2.66 mW/g

Maximum value of SAR (measured) = 6.69 mW/g



0 dB = 7.43mW/g

Applicant:	Kyocera
FCC ID:	V65C5155
Report #:	CT-C5155-9A-0312-R0

Test Laboratory: Comptest/Kyocera

Date: 03/29/2012

2450MHz Validation (in Muscle), Probe #3078, DAE #530, Dipole #776

Communication System: CW, Frequency: 2450 MHz, Duty Cycle: 1:1

Medium: M2450, Medium parameters used (interpolated): $f = 2450$ MHz; $\sigma = 2$ mho/m; $\epsilon_r = 50.9$; $\rho = 1000$ kg/m³

Phantom: SAM 12, Phantom section: Flat Section

DASY4 Configuration:

Probe: ES3DV3 - SN3078, ConvF(4.16, 4.16, 4.16), Calibrated: 9/19/2011

Sensor-Surface: 4mm (Mechanical Surface Detection),

Electronics: DAE4 Sn530, Calibrated: 5/5/2011

Measurement SW: DASY4, V4.7 Build 80

Postprocessing SW: SEMCAD, V1.8 Build 186

Temperature:

Room T = 21.8 \pm 1 deg C, Liquid T = 22.0 \pm 1 deg C

2450MHz Validation @20dBm/Area Scan (61x71x1): Measurement grid: dx=15mm, dy=15mm

Maximum value of SAR (interpolated) = 7.36 mW/g

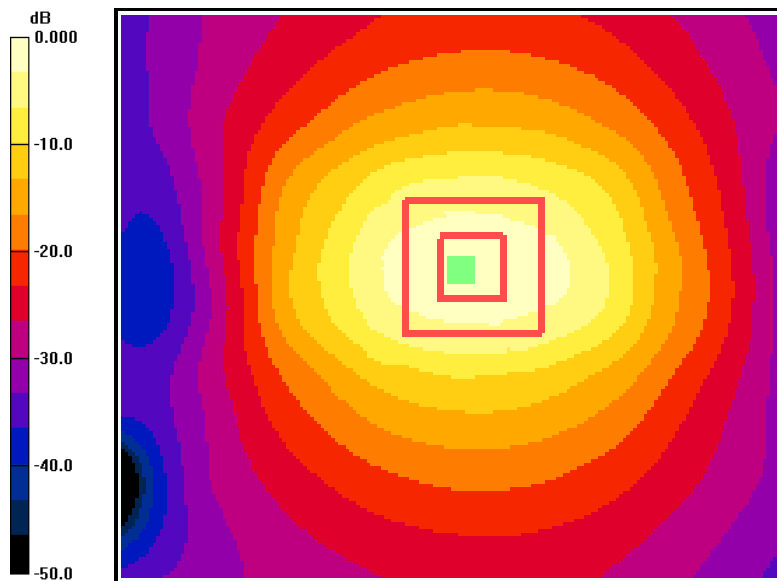
2450MHz Validation @20dBm/Zoom Scan (7x7x7)/Cube 0: Measurement grid: dx=5mm, dy=5mm, dz=5mm

Reference Value = 52.9 V/m; Power Drift = -0.013 dB

Peak SAR (extrapolated) = 12.9 W/kg

SAR(1 g) = 5.92 mW/g; SAR(10 g) = 2.68 mW/g

Maximum value of SAR (measured) = 6.74 mW/g



0 dB = 7.36mW/g

Applicant:	Kyocera
FCC ID:	V65C5155
Report #:	CT-C5155-9A-0312-R0

Test Laboratory: Comptest/Kyocera

Date: 06/15/2012

2450MHz Validation (in Muscle), Probe #3078, DAE #530, Dipole #776

Communication System: CW, Frequency: 2450 MHz, Duty Cycle: 1:1
 Medium: M2450, Medium parameters used (interpolated): $f = 2450$ MHz; $\sigma = 2.04$ mho/m; $\epsilon_r = 51$; $\rho = 1000$ kg/m³
 Phantom: SAM 12, Phantom section: Flat Section

DASY4 Configuration:

Probe: ES3DV3 - SN3078, ConvF(4.16, 4.16, 4.16), Calibrated: 9/19/2011
 Sensor-Surface: 4mm (Mechanical Surface Detection),
 Electronics: DAE4 Sn530, Calibrated: 5/30/2012
 Measurement SW: DASY4, V4.7 Build 80
 Postprocessing SW: SEMCAD, V1.8 Build 186
Temperature: Room T = 21.8 +/- 1 deg C, Liquid T = 22.0 +/- 1 deg C

2450MHz Validation @20dBm/Area Scan (61x71x1): Measurement grid: dx=15mm, dy=15mm

Maximum value of SAR (interpolated) = 7.14 mW/g

2450MHz Validation @20dBm/Zoom Scan (7x7x7)/Cube 0: Measurement grid: dx=5mm, dy=5mm, dz=5mm

Reference Value = 51.7 V/m; Power Drift = 0.188 dB

Peak SAR (extrapolated) = 12.5 W/kg

SAR(1 g) = 5.71 mW/g; SAR(10 g) = 2.58 mW/g

Maximum value of SAR (measured) = 6.54 mW/g

