



Applicant	Kyocera
FCC ID:	V65C5120
Report #:	CT-C5120-13C-0611-R0

CELL BC-10 Slide Close

Applicant	Kyocera
FCC ID:	V65C5120
Report #:	CT-C5120-13C-0611-R0

Test Laboratory: COMPTEST/KYOCERA

Date: 6/13/2011

FCC_C5120_TCoil_CELL_Closed_Ch.476 z (axial)

Communication System: CELL BC0&BC10, Frequency: 817.9 MHz, Duty Cycle: 1:1

Medium: T-Coil, Medium parameters used: $\sigma = 0$ mho/m, $\epsilon_r = 1$; $\rho = 0$ kg/m³

Phantom: HAC Test Arch with AMCC, Phantom section: TCoil Section

DASY4 Configuration:

Probe: AM1DV2 - 1045, , Calibrated: 9/6/2010

Sensor-Surface: 0mm (Fix Surface),

Electronics: DAE4 Sn527, Calibrated: 7/8/2010

Measurement SW: DASY4, V4.7 Build 80

Postprocessing SW: SEMCAD, V1.8 Build 186

Temperature:

Room T = 21.8̄ 1 deg C, Liquid T = 22.0̄ 1 deg C

General Scans_476/z (axial) 4.2mm 50 x 50/ABM Interpolated SNR(x,y,z) (121x121x1):

Measurement grid: dx=10mm, dy=10mm

Signal Type: Audio File (.wav) 48k_voice_1kHz_1s.wav

BWC applied: 0.157003 dB

Device Reference Point: 0.000, 0.000, -6.30 mm

Cursor:

ABM1/ABM2 = 50.3 dB

ABM1 comp = 0.226 dB A/m

BWC Factor = 0.157003 dB

Location: 0.8, 3.3, 3.7 mm

General Scans_476/z (axial) fine 2mm 8 x 8/ABM Interpolated SNR(x,y,z) (41x41x1):

Measurement grid: dx=10mm, dy=10mm

Signal Type: Audio File (.wav) 48k_voice_1kHz_1s.wav

BWC applied: 0.157003 dB

Device Reference Point: 0.000, 0.000, -6.30 mm

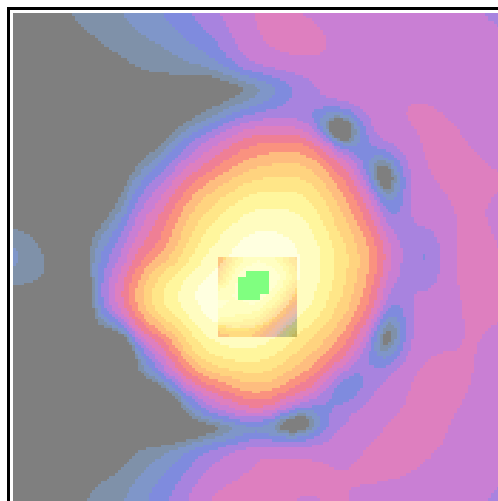
Cursor:

ABM1/ABM2 = 50.3 dB

ABM1 comp = -0.175 dB A/m

BWC Factor = 0.157003 dB

Location: 0, 2.8, 3.7 mm



0 dB = 329.1

Applicant	Kyocera
FCC ID:	V65C5120
Report #:	CT-C5120-13C-0611-R0

Test Laboratory: COMPTEST/KYOCERA

Date: 6/13/2011

FCC_C5120_TCoil_CELL_Closed_Ch.476 x (longitudinal)

Communication System: CELL BC0&BC10, Frequency: 817.9 MHz, Duty Cycle: 1:1

Medium: T-Coil, Medium parameters used: $\sigma = 0$ mho/m, $\epsilon_r = 1$; $\rho = 0$ kg/m³

Phantom: HAC Test Arch with AMCC, Phantom section: TCoil Section

DASY4 Configuration:

Probe: AM1DV2 - 1045, , Calibrated: 9/6/2010

Sensor-Surface: 0mm (Fix Surface),

Electronics: DAE4 Sn527, Calibrated: 7/8/2010

Measurement SW: DASY4, V4.7 Build 80

Postprocessing SW: SEMCAD, V1.8 Build 186

Temperature:

Room T = 21.8̄ 1 deg C, Liquid T = 22.0̄ 1 deg C

General Scans_476/x (longitudinal) 4.2mm 50 x 50/ABM Interpolated SNR(x,y,z) (121x121x1):

Measurement grid: dx=10mm, dy=10mm

Signal Type: Audio File (.wav) 48k_voice_1kHz_1s.wav

BWC applied: 0.157003 dB

Device Reference Point: 0.000, 0.000, -6.30 mm

Cursor:

ABM1/ABM2 = 42.2 dB

ABM1 comp = -9.26 dB A/m

BWC Factor = 0.157003 dB

Location: -8.3, 2.9, 3.7 mm

General Scans_476/x (longitudinal) fine 2mm 8 x 8/ABM Interpolated SNR(x,y,z) (41x41x1):

Measurement grid: dx=10mm, dy=10mm

Signal Type: Audio File (.wav) 48k_voice_1kHz_1s.wav

BWC applied: 0.157003 dB

Device Reference Point: 0.000, 0.000, -6.30 mm

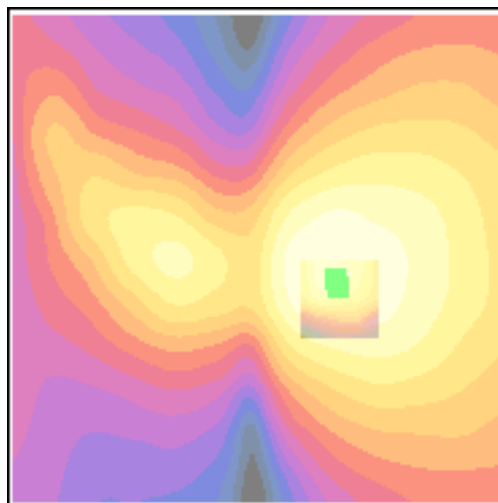
Cursor:

ABM1/ABM2 = 42.9 dB

ABM1 comp = -8.41 dB A/m

BWC Factor = 0.157003 dB

Location: -7.9, 2, 3.7 mm



0 dB = 128.6

Applicant	Kyocera
FCC ID:	V65C5120
Report #:	CT-C5120-13C-0611-R0

Test Laboratory: COMPTEST/KYOCERA

Date: 6/13/2011

FCC_C5120_TCoil_CELL_Closed_Ch. 476 y (transversal)

Communication System: CELL BC0&BC10, Frequency: 817.9 MHz, Duty Cycle: 1:1

Medium: T-Coil, Medium parameters used: $\sigma = 0$ mho/m, $\epsilon_r = 1$; $\rho = 0$ kg/m³

Phantom: HAC Test Arch with AMCC, Phantom section: TCoil Section

DASY4 Configuration:

Probe: AM1DV2 - 1045, , Calibrated: 9/6/2010

Sensor-Surface: 0mm (Fix Surface),

Electronics: DAE4 Sn527, Calibrated: 7/8/2010

Measurement SW: DASY4, V4.7 Build 80

Postprocessing SW: SEMCAD, V1.8 Build 186

Temperature:

Room T = 21.8̄ 1 deg C, Liquid T = 22.0̄ 1 deg C

General Scans_476/y (transversal) 4.2mm 50 x 50/ABM Interpolated SNR(x,y,z) (121x121x1):

Measurement grid: dx=10mm, dy=10mm

Signal Type: Audio File (.wav) 48k_voice_1kHz_1s.wav

BWC applied: 0.157003 dB

Device Reference Point: 0.000, 0.000, -6.30 mm

Cursor:

ABM1/ABM2 = 42.3 dB

ABM1 comp = -10.6 dB A/m

BWC Factor = 0.157003 dB

Location: -0.8, -11.3, 3.7 mm

General Scans_476/y (transversal) fine 2mm 8 x 8/ABM Interpolated SNR(x,y,z) (41x41x1):

Measurement grid: dx=10mm, dy=10mm

Signal Type: Audio File (.wav) 48k_voice_1kHz_1s.wav

BWC applied: 0.157003 dB

Device Reference Point: 0.000, 0.000, -6.30 mm

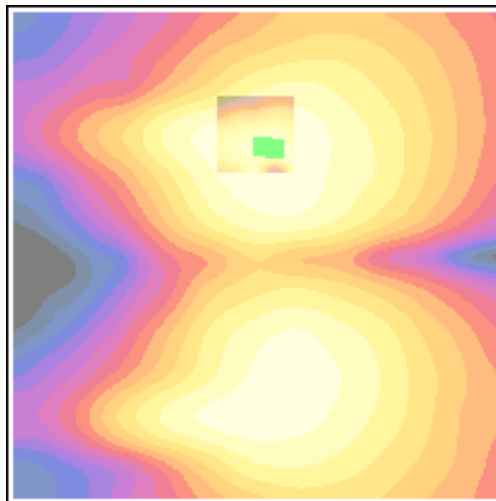
Cursor:

ABM1/ABM2 = 43.0 dB

ABM1 comp = -11.3 dB A/m

BWC Factor = 0.157003 dB

Location: -2, -11.1, 3.7 mm



0 dB = 130.6

Applicant	Kyocera
FCC ID:	V65C5120
Report #:	CT-C5120-13C-0611-R0

Test Laboratory: COMPTEST/KYOCERA

Date: 7/7/2011

FCC_C5120_TCoil_CELL_Closed_Ch.580 x (axial)

Communication System: CDMA_Tri_BC0&10, Frequency: 820.5 MHz, Duty Cycle: 1:1
 Medium: T-Coil, Medium parameters used: $\sigma = 0$ mho/m, $\epsilon_r = 1$; $\rho = 0$ kg/m³
 Phantom: HAC Test Arch with AMCC, Phantom section: TCoil Section

DASY4 Configuration:

Probe: AM1DV2 - 1045, , Calibrated: 9/6/2010
 Sensor-Surface: 0mm (Fix Surface),
 Electronics: DAE4 Sn527, Calibrated: 7/8/2010
 Measurement SW: DASY4, V4.7 Build 80
 Postprocessing SW: SEMCAD, V1.8 Build 184

Temperature:

Room T = 21.8 ± 1 deg C, Liquid T = 22.0 ± 1 deg C

General Scans_580/x (longitudinal) 4.2mm 50 x 50/ABM Interpolated SNR(x,y,z) (121x121x1):

Measurement grid: dx=10mm, dy=10mm
 Signal Type: Audio File (.wav) 48k_voice_1kHz_1s.wav
 BWC applied: 0.155979 dB
 Device Reference Point: 0.000, 0.000, -6.30 mm

Cursor:

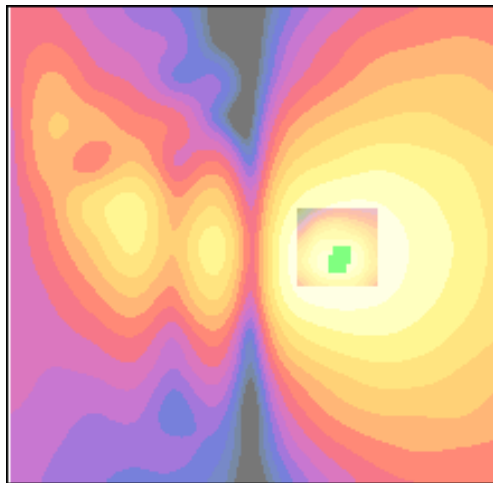
ABM1/ABM2 = 42.8 dB
 ABM1 comp = -8.66 dB A/m
 BWC Factor = 0.155979 dB
 Location: -8.7, 0.8, 3.7 mm

General Scans_580/x (longitudinal) fine 2mm 8 x 8/ABM Interpolated SNR(x,y,z) (41x41x1):

Measurement grid: dx=10mm, dy=10mm
 Signal Type: Audio File (.wav) 48k_voice_1kHz_1s.wav
 BWC applied: 0.155979 dB
 Device Reference Point: 0.000, 0.000, -6.30 mm

Cursor:

ABM1/ABM2 = 42.9 dB
 ABM1 comp = -8.59 dB A/m
 BWC Factor = 0.155979 dB
 Location: -8.3, 1.8, 3.7 mm



0 dB = 137.7

Applicant	Kyocera
FCC ID:	V65C5120
Report #:	CT-C5120-13C-0611-R0

Test Laboratory: COMPTEST/KYOCERA

Date: 7/7/2011

FCC_C5120_TCoil_CELL_Closed_Ch.580 y (axial)

Communication System: CDMA_Tri_BC0&10, Frequency: 820.5 MHz, Duty Cycle: 1:1
 Medium: T-Coil, Medium parameters used: $\sigma = 0$ mho/m, $\epsilon_r = 1$; $\rho = 0$ kg/m³
 Phantom: HAC Test Arch with AMCC, Phantom section: TCoil Section

DASY4 Configuration:

Probe: AM1DV2 - 1045, , Calibrated: 9/6/2010
 Sensor-Surface: 0mm (Fix Surface),
 Electronics: DAE4 Sn527, Calibrated: 7/8/2010
 Measurement SW: DASY4, V4.7 Build 80
 Postprocessing SW: SEMCAD, V1.8 Build 184

Temperature:

Room T = 21.8̄ 1 deg C, Liquid T = 22.0̄ 1 deg C

General Scans_580/y (transversal) 4.2mm 50 x 50/ABM Interpolated SNR(x,y,z) (121x121x1):

Measurement grid: dx=10mm, dy=10mm
 Signal Type: Audio File (.wav) 48k_voice_1kHz_1s.wav
 BWC applied: 0.155979 dB
 Device Reference Point: 0.000, 0.000, -6.30 mm

Cursor:

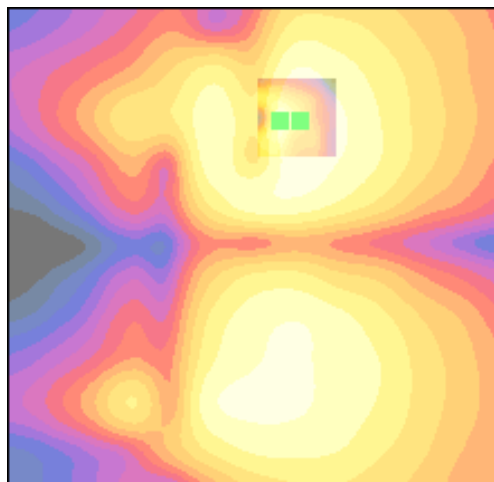
ABM1/ABM2 = 41.3 dB
 ABM1 comp = -13.5 dB A/m
 BWC Factor = 0.155979 dB
 Location: -4.6, -12.1, 3.7 mm

General Scans_580/y (transversal) fine 2mm 8 x 8/ABM Interpolated SNR(x,y,z) (41x41x1):

Measurement grid: dx=10mm, dy=10mm
 Signal Type: Audio File (.wav) 48k_voice_1kHz_1s.wav
 BWC applied: 0.155979 dB
 Device Reference Point: 0.000, 0.000, -6.30 mm

Cursor:

ABM1/ABM2 = 41.7 dB
 ABM1 comp = -12.7 dB A/m
 BWC Factor = 0.155979 dB
 Location: -2.6, -12.3, 3.7 mm



0 dB = 116.2

Applicant	Kyocera
FCC ID:	V65C5120
Report #:	CT-C5120-13C-0611-R0

Test Laboratory: COMPTEST/KYOCERA

Date: 7/7/2011

FCC_C5120_TCoil_CELL_Closed_Ch.684 z (axial)

Communication System: CDMA_Tri_BC0&10, Frequency: 823.1 MHz, Duty Cycle: 1:1
 Medium: T-Coil, Medium parameters used: $\sigma = 0$ mho/m, $\epsilon_r = 1$; $\rho = 0$ kg/m³
 Phantom: HAC Test Arch with AMCC, Phantom section: TCoil Section

DASY4 Configuration:

Probe: AM1DV2 - 1045, , Calibrated: 9/6/2010
 Sensor-Surface: 0mm (Fix Surface),
 Electronics: DAE4 Sn527, Calibrated: 7/8/2010
 Measurement SW: DASY4, V4.7 Build 80
 Postprocessing SW: SEMCAD, V1.8 Build 184

Temperature:

Room T = 21.8 +/- 1 deg C, Liquid T = 22.0 +/- 1 deg C

General Scans_684/z (axial) 4.2mm 50 x 50/ABM Interpolated SNR(x,y,z) (121x121x1):

Measurement grid: dx=10mm, dy=10mm
 Signal Type: Audio File (.wav) 48k_voice_1kHz_1s.wav
 BWC applied: 0.155979 dB
 Device Reference Point: 0.000, 0.000, -6.30 mm

Cursor:

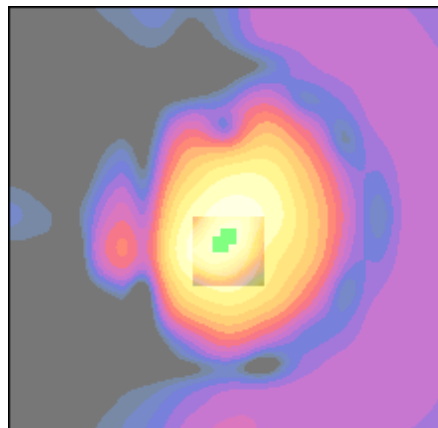
ABM1/ABM2 = 51.0 dB
 ABM1 comp = -0.198 dB A/m
 BWC Factor = 0.155979 dB
 Location: 0.8, 3.3, 3.7 mm

General Scans_684/z (axial) fine 2mm 8 x 8/ABM Interpolated SNR(x,y,z) (41x41x1):

Measurement grid: dx=10mm, dy=10mm
 Signal Type: Audio File (.wav) 48k_voice_1kHz_1s.wav
 BWC applied: 0.155979 dB
 Device Reference Point: 0.000, 0.000, -6.30 mm

Cursor:

ABM1/ABM2 = 50.8 dB
 ABM1 comp = 0.228 dB A/m
 BWC Factor = 0.155979 dB
 Location: 0, 2.4, 3.7 mm



0 dB = 353.1

Applicant	Kyocera
FCC ID:	V65C5120
Report #:	CT-C5120-13C-0611-R0

Test Laboratory: COMPTEST/KYOCERA

Date: 7/7/2011

FCC_C5120_TCoil_CELL_Closed_Ch.684 x (axial)

Communication System: CDMA_Tri_BC0&10, Frequency: 823.1 MHz, Duty Cycle: 1:1
 Medium: T-Coil, Medium parameters used: $\sigma = 0$ mho/m, $\epsilon_r = 1$; $\rho = 0$ kg/m³
 Phantom: HAC Test Arch with AMCC, Phantom section: TCoil Section

DASY4 Configuration:

Probe: AM1DV2 - 1045, , Calibrated: 9/6/2010
 Sensor-Surface: 0mm (Fix Surface),
 Electronics: DAE4 Sn527, Calibrated: 7/8/2010
 Measurement SW: DASY4, V4.7 Build 80
 Postprocessing SW: SEMCAD, V1.8 Build 184

Temperature:

Room T = 21.8 +/- 1 deg C, Liquid T = 22.0 +/- 1 deg C

General Scans_684/x (longitudinal) 4.2mm 50 x 50/ABM Interpolated SNR(x,y,z) (121x121x1):

Measurement grid: dx=10mm, dy=10mm
 Signal Type: Audio File (.wav) 48k_voice_1kHz_1s.wav
 BWC applied: 0.155979 dB
 Device Reference Point: 0.000, 0.000, -6.30 mm

Cursor:

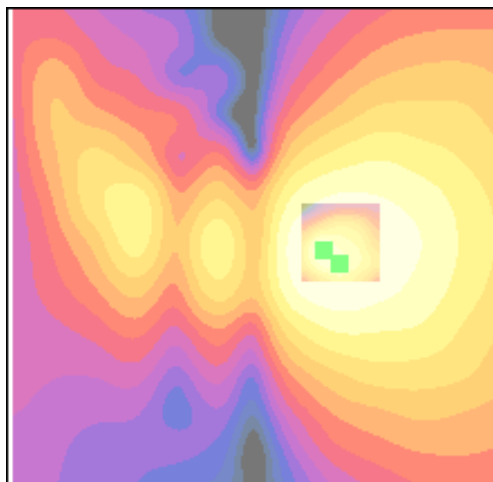
ABM1/ABM2 = 42.3 dB
 ABM1 comp = -9.26 dB A/m
 BWC Factor = 0.155979 dB
 Location: -8.3, 2.1, 3.7 mm

General Scans_684/x (longitudinal) fine 2mm 8 x 8/ABM Interpolated SNR(x,y,z) (41x41x1):

Measurement grid: dx=10mm, dy=10mm
 Signal Type: Audio File (.wav) 48k_voice_1kHz_1s.wav
 BWC applied: 0.155979 dB
 Device Reference Point: 0.000, 0.000, -6.30 mm

Cursor:

ABM1/ABM2 = 43.2 dB
 ABM1 comp = -7.44 dB A/m
 BWC Factor = 0.155979 dB
 Location: -6.7, 0.8, 3.7 mm



0 dB = 130.0

Applicant	Kyocera
FCC ID:	V65C5120
Report #:	CT-C5120-13C-0611-R0

Test Laboratory: COMPTEST/KYOCERA

Date: 7/7/2011

FCC_C5120_TCoil_CELL_Closed_Ch.684 y (axial)

Communication System: CDMA_Tri_BC0&10, Frequency: 823.1 MHz, Duty Cycle: 1:1
 Medium: T-Coil, Medium parameters used: $\sigma = 0$ mho/m, $\epsilon_r = 1$; $\rho = 0$ kg/m³
 Phantom: HAC Test Arch with AMCC, Phantom section: TCoil Section

DASY4 Configuration:

Probe: AM1DV2 - 1045, , Calibrated: 9/6/2010
 Sensor-Surface: 0mm (Fix Surface),
 Electronics: DAE4 Sn527, Calibrated: 7/8/2010
 Measurement SW: DASY4, V4.7 Build 80
 Postprocessing SW: SEMCAD, V1.8 Build 184

Temperature:

Room T = 21.8 +/- 1 deg C, Liquid T = 22.0 +/- 1 deg C

General Scans_684/y (transversal) 4.2mm 50 x 50/ABM Interpolated SNR(x,y,z) (121x121x1):

Measurement grid: dx=10mm, dy=10mm
 Signal Type: Audio File (.wav) 48k_voice_1kHz_1s.wav
 BWC applied: 0.155979 dB
 Device Reference Point: 0.000, 0.000, -6.30 mm

Cursor:

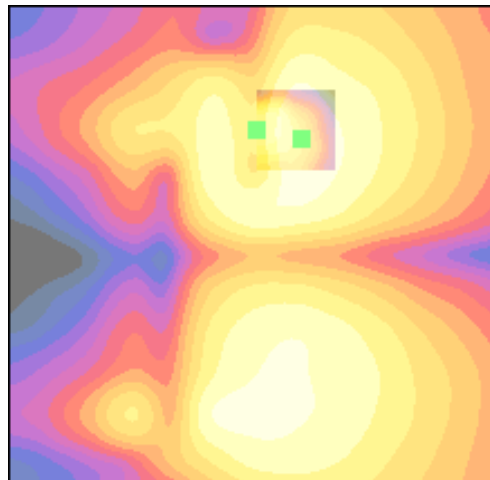
ABM1/ABM2 = 41.3 dB
 ABM1 comp = -13.2 dB A/m
 BWC Factor = 0.155979 dB
 Location: -4.6, -11.7, 3.7 mm

General Scans_684/y (transversal) fine 2mm 8 x 8/ABM Interpolated SNR(x,y,z) (41x41x1):

Measurement grid: dx=10mm, dy=10mm
 Signal Type: Audio File (.wav) 48k_voice_1kHz_1s.wav
 BWC applied: 0.155979 dB
 Device Reference Point: 0.000, 0.000, -6.30 mm

Cursor:

ABM1/ABM2 = 41.7 dB
 ABM1 comp = -11.7 dB A/m
 BWC Factor = 0.155979 dB
 Location: -0.2, -12.5, 3.7 mm



0 dB = 116.7

Applicant	Kyocera
FCC ID:	V65C5120
Report #:	CT-C5120-13C-0611-R0

CELL BC-0

Slide Close

Applicant	Kyocera
FCC ID:	V65C5120
Report #:	CT-C5120-13C-0611-R0

Test Laboratory: COMPTEST/KYOCERA

Date: 7/7/2011

FCC_C5120_TCoil_CELL_Closed_Ch.1013 z (axial)

Communication System: CDMA_Tri_BC0&10, Frequency: 824.7 MHz, Duty Cycle: 1:1
 Medium: T-Coil, Medium parameters used: $\sigma = 0$ mho/m, $\epsilon_r = 1$; $\rho = 0$ kg/m³
 Phantom: HAC Test Arch with AMCC, Phantom section: TCoil Section

DASY4 Configuration:

Probe: AM1DV2 - 1045, , Calibrated: 9/6/2010
 Sensor-Surface: 0mm (Fix Surface),
 Electronics: DAE4 Sn527, Calibrated: 7/8/2010
 Measurement SW: DASY4, V4.7 Build 80
 Postprocessing SW: SEMCAD, V1.8 Build 184

Temperature:

Room T = 21.8̄ 1 deg C, Liquid T = 22.0̄ 1 deg C

General Scans_1013/z (axial) 4.2mm 50 x 50/ABM Interpolated SNR(x,y,z) (121x121x1):

Measurement grid: dx=10mm, dy=10mm
 Signal Type: Audio File (.wav) 48k_voice_1kHz_1s.wav
 BWC applied: 0.155979 dB
 Device Reference Point: 0.000, 0.000, -6.30 mm

Cursor:

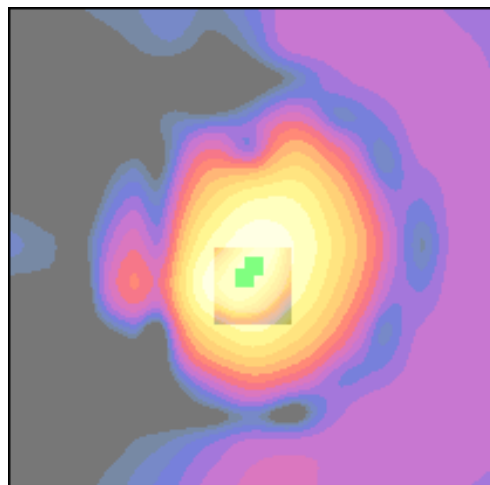
ABM1/ABM2 = 50.8 dB
 ABM1 comp = -0.268 dB A/m
 BWC Factor = 0.155979 dB
 Location: 0.8, 3.3, 3.7 mm

General Scans_1013/z (axial) fine 2mm 8 x 8/ABM Interpolated SNR(x,y,z) (41x41x1):

Measurement grid: dx=10mm, dy=10mm
 Signal Type: Audio File (.wav) 48k_voice_1kHz_1s.wav
 BWC applied: 0.155979 dB
 Device Reference Point: 0.000, 0.000, -6.30 mm

Cursor:

ABM1/ABM2 = 50.9 dB
 ABM1 comp = 0.495 dB A/m
 BWC Factor = 0.155979 dB
 Location: 0, 2.2, 3.7 mm



0 dB = 348.5

Applicant	Kyocera
FCC ID:	V65C5120
Report #:	CT-C5120-13C-0611-R0

Test Laboratory: COMPTEST/KYOCERA

Date: 7/7/2011

FCC_C5120_TCoil_CELL_Closed_Ch.1013 x (axial)

Communication System: CDMA_Tri_BC0&10, Frequency: 824.7 MHz, Duty Cycle: 1:1

Medium: T-Coil, Medium parameters used: $\sigma = 0$ mho/m, $\epsilon_r = 1$; $\rho = 0$ kg/m³

Phantom: HAC Test Arch with AMCC, Phantom section: TCoil Section

DASY4 Configuration:

Probe: AM1DV2 - 1045, , Calibrated: 9/6/2010

Sensor-Surface: 0mm (Fix Surface),

Electronics: DAE4 Sn527, Calibrated: 7/8/2010

Measurement SW: DASY4, V4.7 Build 80

Postprocessing SW: SEMCAD, V1.8 Build 184

Temperature:

Room T = 21.8̄ 1 deg C, Liquid T = 22.0̄ 1 deg C

General Scans_1013/x (longitudinal) 4.2mm 50 x 50/ABM Interpolated SNR(x,y,z) (121x121x1):

Measurement grid: dx=10mm, dy=10mm

Signal Type: Audio File (.wav) 48k_voice_1kHz_1s.wav

BWC applied: 0.155979 dB

Device Reference Point: 0.000, 0.000, -6.30 mm

Cursor:

ABM1/ABM2 = 42.8 dB

ABM1 comp = -7.91 dB A/m

BWC Factor = 0.155979 dB

Location: -7.1, 1.7, 3.7 mm

General Scans_1013/x (longitudinal) fine 2mm 8 x 8/ABM Interpolated SNR(x,y,z) (41x41x1):

Measurement grid: dx=10mm, dy=10mm

Signal Type: Audio File (.wav) 48k_voice_1kHz_1s.wav

BWC applied: 0.155979 dB

Device Reference Point: 0.000, 0.000, -6.30 mm

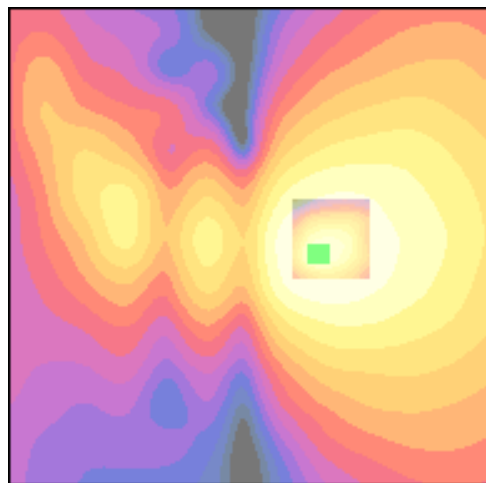
Cursor:

ABM1/ABM2 = 43.3 dB

ABM1 comp = -7.63 dB A/m

BWC Factor = 0.155979 dB

Location: -7.1, 1.6, 3.7 mm



0 dB = 138.5

Applicant	Kyocera
FCC ID:	V65C5120
Report #:	CT-C5120-13C-0611-R0

Test Laboratory: COMPTEST/KYOCERA

Date: 7/7/2011

FCC_C5120_TCoil_CELL_Closed_Ch.1013 y (axial)

Communication System: CDMA_Tri_BC0&10, Frequency: 824.7 MHz, Duty Cycle: 1:1

Medium: T-Coil, Medium parameters used: $\sigma = 0$ mho/m, $\epsilon_r = 1$; $\rho = 0$ kg/m³

Phantom: HAC Test Arch with AMCC, Phantom section: TCoil Section

DASY4 Configuration:

Probe: AM1DV2 - 1045, , Calibrated: 9/6/2010

Sensor-Surface: 0mm (Fix Surface),

Electronics: DAE4 Sn527, Calibrated: 7/8/2010

Measurement SW: DASY4, V4.7 Build 80

Postprocessing SW: SEMCAD, V1.8 Build 184

Temperature:

Room T = 21.8̄ 1 deg C, Liquid T = 22.0̄ 1 deg C

General Scans_1013/y (transversal) 4.2mm 50 x 50/ABM Interpolated SNR(x,y,z) (121x121x1):

Measurement grid: dx=10mm, dy=10mm

Signal Type: Audio File (.wav) 48k_voice_1kHz_1s.wav

BWC applied: 0.155979 dB

Device Reference Point: 0.000, 0.000, -6.30 mm

Cursor:

ABM1/ABM2 = 41.3 dB

ABM1 comp = -13.1 dB A/m

BWC Factor = 0.155979 dB

Location: -4.6, -11.7, 3.7 mm

General Scans_1013/y (transversal) fine 2mm 8 x 8/ABM Interpolated SNR(x,y,z) (41x41x1):

Measurement grid: dx=10mm, dy=10mm

Signal Type: Audio File (.wav) 48k_voice_1kHz_1s.wav

BWC applied: 0.155979 dB

Device Reference Point: 0.000, 0.000, -6.30 mm

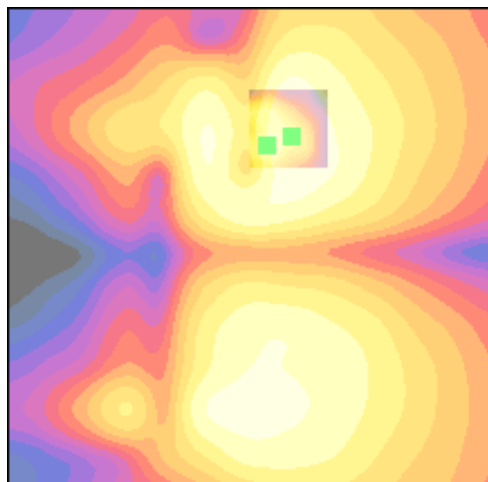
Cursor:

ABM1/ABM2 = 41.8 dB

ABM1 comp = -10.4 dB A/m

BWC Factor = 0.155979 dB

Location: -2, -10.7, 3.7 mm



0 dB = 116.3

Applicant	Kyocera
FCC ID:	V65C5120
Report #:	CT-C5120-13C-0611-R0

Test Laboratory: COMPTEST/KYOCERA

Date: 6/13/2011

FCC_C5120_TCoil_CELL_Closed_Ch.384 z (axial)

Communication System: CELL BC0&BC10, Frequency: 836.49 MHz, Duty Cycle: 1:1

Medium: T-Coil, Medium parameters used: $\sigma = 0$ mho/m, $\epsilon_r = 1$; $\rho = 0$ kg/m³

Phantom: HAC Test Arch with AMCC, Phantom section: TCoil Section

DASY4 Configuration:

Probe: AM1DV2 - 1045, , Calibrated: 9/6/2010

Sensor-Surface: 0mm (Fix Surface),

Electronics: DAE4 Sn527, Calibrated: 7/8/2010

Measurement SW: DASY4, V4.7 Build 80

Postprocessing SW: SEMCAD, V1.8 Build 186

Temperature:

Room T = 21.8̄ 1 deg C, Liquid T = 22.0̄ 1 deg C

General Scans_384/z (axial) 4.2mm 50 x 50/ABM Interpolated SNR(x,y,z) (121x121x1):

Measurement grid: dx=10mm, dy=10mm

Signal Type: Audio File (.wav) 48k_voice_1kHz_1s.wav

BWC applied: 0.155979 dB

Device Reference Point: 0.000, 0.000, -6.30 mm

Cursor:

ABM1/ABM2 = 50.3 dB

ABM1 comp = 0.724 dB A/m

BWC Factor = 0.155979 dB

Location: 0, 1.7, 3.7 mm

General Scans_384/z (axial) fine 2mm 8 x 8/ABM Interpolated SNR(x,y,z) (41x41x1):

Measurement grid: dx=10mm, dy=10mm

Signal Type: Audio File (.wav) 48k_voice_1kHz_1s.wav

BWC applied: 0.155979 dB

Device Reference Point: 0.000, 0.000, -6.30 mm

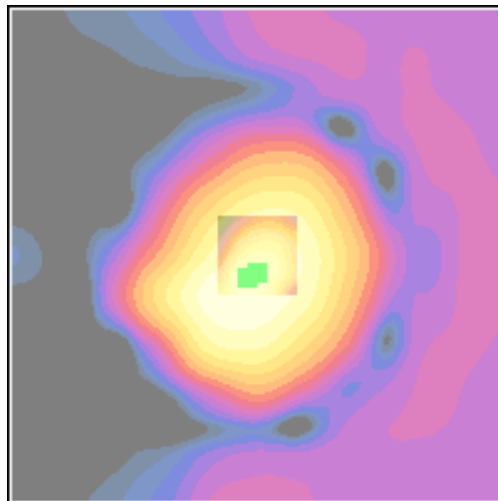
Cursor:

ABM1/ABM2 = 50.7 dB

ABM1 comp = 0.443 dB A/m

BWC Factor = 0.155979 dB

Location: 1, 2.4, 3.7 mm



0 dB = 325.7

Applicant	Kyocera
FCC ID:	V65C5120
Report #:	CT-C5120-13C-0611-R0

Test Laboratory: COMPTEST/KYOCERA

Date: 6/13/2011

FCC_C5120_TCoil_CELL_Closed_Ch.384 x (longitudinal)

Communication System: CELL BC0&BC10, Frequency: 836.49 MHz, Duty Cycle: 1:1

Medium: T-Coil, Medium parameters used: $\sigma = 0$ mho/m, $\epsilon_r = 1$; $\rho = 0$ kg/m³

Phantom: HAC Test Arch with AMCC, Phantom section: TCoil Section

DASY4 Configuration:

Probe: AM1DV2 - 1045, , Calibrated: 9/6/2010

Sensor-Surface: 0mm (Fix Surface),

Electronics: DAE4 Sn527, Calibrated: 7/8/2010

Measurement SW: DASY4, V4.7 Build 80

Postprocessing SW: SEMCAD, V1.8 Build 186

Temperature:

Room T = 21.8̄ 1 deg C, Liquid T = 22.0̄ 1 deg C

General Scans_384/x (longitudinal) 4.2mm 50 x 50/ABM Interpolated SNR(x,y,z) (121x121x1):

Measurement grid: dx=10mm, dy=10mm

Signal Type: Audio File (.wav) 48k_voice_1kHz_1s.wav

BWC applied: 0.155979 dB

Device Reference Point: 0.000, 0.000, -6.30 mm

Cursor:

ABM1/ABM2 = 43.1 dB

ABM1 comp = -8.37 dB A/m

BWC Factor = 0.155979 dB

Location: -7.9, 0.4, 3.7 mm

General Scans_384/x (longitudinal) fine 2mm 8 x 8/ABM Interpolated SNR(x,y,z) (41x41x1):

Measurement grid: dx=10mm, dy=10mm

Signal Type: Audio File (.wav) 48k_voice_1kHz_1s.wav

BWC applied: 0.155979 dB

Device Reference Point: 0.000, 0.000, -6.30 mm

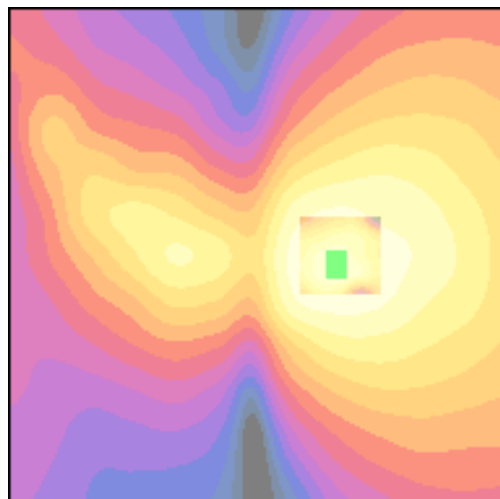
Cursor:

ABM1/ABM2 = 43.3 dB

ABM1 comp = -8.25 dB A/m

BWC Factor = 0.155979 dB

Location: -7.9, 1.4, 3.7 mm



0 dB = 142.8

Applicant	Kyocera
FCC ID:	V65C5120
Report #:	CT-C5120-13C-0611-R0

Test Laboratory: COMPTEST/KYOCERA

Date: 6/13/2011

FCC_C5120_TCoil_CELL_Closed_Ch.384 y(transversal)

Communication System: CELL BC0&BC10, Frequency: 836.49 MHz, Duty Cycle: 1:1

Medium: T-Coil, Medium parameters used: $\sigma = 0$ mho/m, $\epsilon_r = 1$; $\rho = 0$ kg/m³

Phantom: HAC Test Arch with AMCC, Phantom section: TCoil Section

DASY4 Configuration:

Probe: AM1DV2 - 1045, , Calibrated: 9/6/2010

Sensor-Surface: 0mm (Fix Surface),

Electronics: DAE4 Sn527, Calibrated: 7/8/2010

Measurement SW: DASY4, V4.7 Build 80

Postprocessing SW: SEMCAD, V1.8 Build 186

Temperature:

Room T = 21.8̄ 1 deg C, Liquid T = 22.0̄ 1 deg C

General Scans_384/y (transversal) 4.2mm 50 x 50/ABM Interpolated SNR(x,y,z) (121x121x1):

Measurement grid: dx=10mm, dy=10mm

Signal Type: Audio File (.wav) 48k_voice_1kHz_1s.wav

BWC applied: 0.155979 dB

Device Reference Point: 0.000, 0.000, -6.30 mm

Cursor:

ABM1/ABM2 = 43.1 dB

ABM1 comp = -10.3 dB A/m

BWC Factor = 0.155979 dB

Location: 0, -11.7, 3.7 mm

General Scans_384/y (transversal) fine 2mm 8 x 8/ABM Interpolated SNR(x,y,z) (41x41x1):

Measurement grid: dx=10mm, dy=10mm

Signal Type: Audio File (.wav) 48k_voice_1kHz_1s.wav

BWC applied: 0.155979 dB

Device Reference Point: 0.000, 0.000, -6.30 mm

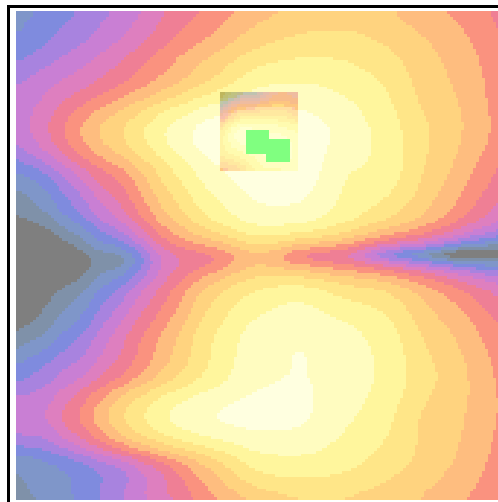
Cursor:

ABM1/ABM2 = 43.1 dB

ABM1 comp = -10.3 dB A/m

BWC Factor = 0.155979 dB

Location: -2, -10.7, 3.7 mm



0 dB = 142.1

Applicant	Kyocera
FCC ID:	V65C5120
Report #:	CT-C5120-13C-0611-R0

Test Laboratory: COMPTEST/KYOCERA

Date: 6/13/2011

FCC_C5120_TCoil_CELL_Closed_Ch. 777 z(axial)

Communication System: CELL BC0&BC10, Frequency: 848.31 MHz, Duty Cycle: 1:1

Medium: T-Coil, Medium parameters used: $\sigma = 0$ mho/m, $\epsilon_r = 1$; $\rho = 0$ kg/m³

Phantom: HAC Test Arch with AMCC, Phantom section: TCoil Section

DASY4 Configuration:

Probe: AM1DV2 - 1045, , Calibrated: 9/6/2010

Sensor-Surface: 0mm (Fix Surface),

Electronics: DAE4 Sn527, Calibrated: 7/8/2010

Measurement SW: DASY4, V4.7 Build 80

Postprocessing SW: SEMCAD, V1.8 Build 186

Temperature:

Room T = 21.8̄ 1 deg C, Liquid T = 22.0̄ 1 deg C

General Scans_777/z (axial) 4.2mm 50 x 50/ABM Interpolated SNR(x,y,z) (121x121x1):

Measurement grid: dx=10mm, dy=10mm

Signal Type: Audio File (.wav) 48k_voice_1kHz_1s.wav

BWC applied: 0.155979 dB

Device Reference Point: 0.000, 0.000, -6.30 mm

Cursor:

ABM1/ABM2 = 50.2 dB

ABM1 comp = 0.311 dB A/m

BWC Factor = 0.155979 dB

Location: -0.4, 0.8, 3.7 mm

General Scans_777/z (axial) fine 2mm 8 x 8/ABM Interpolated SNR(x,y,z) (41x41x1):

Measurement grid: dx=10mm, dy=10mm

Signal Type: Audio File (.wav) 48k_voice_1kHz_1s.wav

BWC applied: 0.155979 dB

Device Reference Point: 0.000, 0.000, -6.30 mm

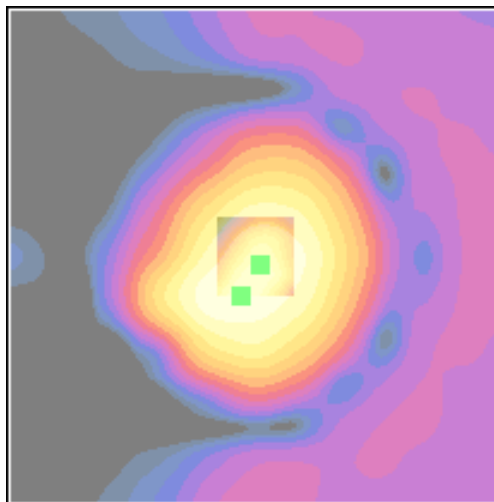
Cursor:

ABM1/ABM2 = 50.4 dB

ABM1 comp = -1.06 dB A/m

BWC Factor = 0.155979 dB

Location: 1.4, 4, 3.7 mm



0 dB = 324.1

Applicant	Kyocera
FCC ID:	V65C5120
Report #:	CT-C5120-13C-0611-R0

Test Laboratory: COMPTEST/KYOCERA

Date: 6/13/2011

FCC_C5120_TCoil_CELL_Closed_Ch. 777 x(longitudinal)

Communication System: CELL BC0&BC10, Frequency: 848.31 MHz, Duty Cycle: 1:1

Medium: T-Coil, Medium parameters used: $\sigma = 0$ mho/m, $\epsilon_r = 1$; $\rho = 0$ kg/m³

Phantom: HAC Test Arch with AMCC, Phantom section: TCoil Section

DASY4 Configuration:

Probe: AM1DV2 - 1045, , Calibrated: 9/6/2010

Sensor-Surface: 0mm (Fix Surface),

Electronics: DAE4 Sn527, Calibrated: 7/8/2010

Measurement SW: DASY4, V4.7 Build 80

Postprocessing SW: SEMCAD, V1.8 Build 186

Temperature:

Room T = 21.8̄ 1 deg C, Liquid T = 22.0̄ 1 deg C

General Scans_777/x (longitudinal) 4.2mm 50 x 50/ABM Interpolated SNR(x,y,z) (121x121x1):

Measurement grid: dx=10mm, dy=10mm

Signal Type: Audio File (.wav) 48k_voice_1kHz_1s.wav

BWC applied: 0.155979 dB

Device Reference Point: 0.000, 0.000, -6.30 mm

Cursor:

ABM1/ABM2 = 42.6 dB

ABM1 comp = -8.75 dB A/m

BWC Factor = 0.155979 dB

Location: -8.3, 0.4, 3.7 mm

General Scans_777/x (longitudinal) fine 2mm 8 x 8/ABM Interpolated SNR(x,y,z) (41x41x1):

Measurement grid: dx=10mm, dy=10mm

Signal Type: Audio File (.wav) 48k_voice_1kHz_1s.wav

BWC applied: 0.155979 dB

Device Reference Point: 0.000, 0.000, -6.30 mm

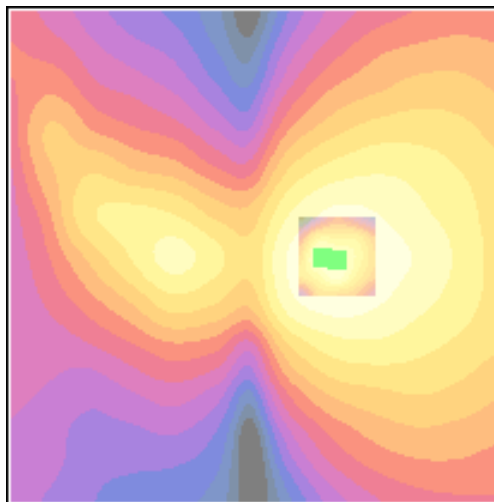
Cursor:

ABM1/ABM2 = 43.1 dB

ABM1 comp = -7.44 dB A/m

BWC Factor = 0.155979 dB

Location: -6.9, 0.2, 3.7 mm



0 dB = 135.3

Applicant	Kyocera
FCC ID:	V65C5120
Report #:	CT-C5120-13C-0611-R0

Test Laboratory: COMPTEST/KYOCERA

Date: 6/13/2011

FCC_C5120_TCoil_CELL_Closed_Ch. 777 y(transveral)

Communication System: CELL BC0&BC10, Frequency: 848.31 MHz, Duty Cycle: 1:1

Medium: T-Coil, Medium parameters used: $\sigma = 0$ mho/m, $\epsilon_r = 1$; $\rho = 0$ kg/m³

Phantom: HAC Test Arch with AMCC, Phantom section: TCoil Section

DASY4 Configuration:

Probe: AM1DV2 - 1045, , Calibrated: 9/6/2010

Sensor-Surface: 0mm (Fix Surface),

Electronics: DAE4 Sn527, Calibrated: 7/8/2010

Measurement SW: DASY4, V4.7 Build 80

Postprocessing SW: SEMCAD, V1.8 Build 186

Temperature:

Room T = 21.8̄ 1 deg C, Liquid T = 22.0̄ 1 deg C

General Scans_777/y (transversal) 4.2mm 50 x 50/ABM Interpolated SNR(x,y,z) (121x121x1):

Measurement grid: dx=10mm, dy=10mm

Signal Type: Audio File (.wav) 48k_voice_1kHz_1s.wav

BWC applied: 0.155979 dB

Device Reference Point: 0.000, 0.000, -6.30 mm

Cursor:

ABM1/ABM2 = 42.5 dB

ABM1 comp = -10.8 dB A/m

BWC Factor = 0.155979 dB

Location: -0.4, -11.7, 3.7 mm

General Scans_777/y (transversal) fine 2mm 8 x 8/ABM Interpolated SNR(x,y,z) (41x41x1):

Measurement grid: dx=10mm, dy=10mm

Signal Type: Audio File (.wav) 48k_voice_1kHz_1s.wav

BWC applied: 0.155979 dB

Device Reference Point: 0.000, 0.000, -6.30 mm

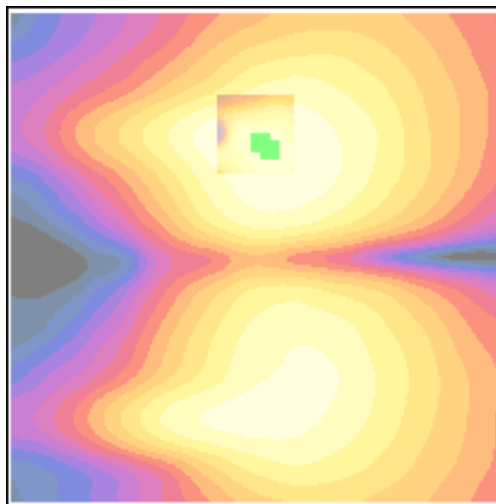
Cursor:

ABM1/ABM2 = 43.0 dB

ABM1 comp = -10.4 dB A/m

BWC Factor = 0.155979 dB

Location: -1.6, -10.9, 3.7 mm



0 dB = 133.4

Applicant	Kyocera
FCC ID:	V65C5120
Report #:	CT-C5120-13C-0611-R0

PCS Slide Close

Applicant	Kyocera
FCC ID:	V65C5120
Report #:	CT-C5120-13C-0611-R0

Test Laboratory: COMPTEST/KYOCERA

Date: 6/14/2011

FCC_C5120_TCoil_PCS_Closed Ch. 25 z(axial)

Communication System: CDMA-1900, Frequency: 1851.25 MHz, Duty Cycle: 1:1

Medium: T-Coil, Medium parameters used: $\sigma = 0$ mho/m, $\epsilon_r = 1$; $\rho = 0$ kg/m³

Phantom: HAC Test Arch with AMCC, Phantom section: TCoil Section

DASY4 Configuration:

Probe: AM1DV2 - 1045, , Calibrated: 9/6/2010

Sensor-Surface: 0mm (Fix Surface),

Electronics: DAE4 Sn527, Calibrated: 7/8/2010

Measurement SW: DASY4, V4.7 Build 80

Postprocessing SW: SEMCAD, V1.8 Build 186

Temperature:

Room T = 21.8 +/- 1 deg C, Liquid T = 22.0 +/- 1 deg C

General Scans_25/z (axial) 4.2mm 50 x 50/ABM Interpolated SNR(x,y,z) (121x121x1):

Measurement grid: dx=10mm, dy=10mm

Signal Type: Audio File (.wav) 48k_voice_1kHz_1s.wav

BWC applied: 0.155979 dB

Device Reference Point: 0.000, 0.000, -6.30 mm

Cursor:

ABM1/ABM2 = 50.1 dB

ABM1 comp = -0.350 dB A/m

BWC Factor = 0.155979 dB

Location: 0.4, 2.5, 3.7 mm

General Scans_25/z (axial) fine 2mm 8 x 8/ABM Interpolated SNR(x,y,z) (41x41x1):

Measurement grid: dx=10mm, dy=10mm

Signal Type: Audio File (.wav) 48k_voice_1kHz_1s.wav

BWC applied: 0.155979 dB

Device Reference Point: 0.000, 0.000, -6.30 mm

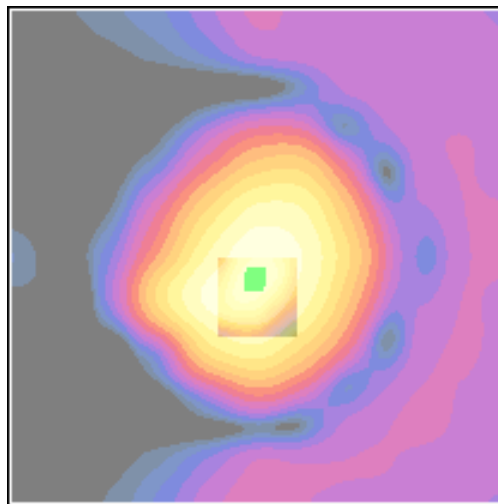
Cursor:

ABM1/ABM2 = 50.3 dB

ABM1 comp = -0.235 dB A/m

BWC Factor = 0.155979 dB

Location: 0, 2.2, 3.7 mm



0 dB = 318.2

Applicant	Kyocera
FCC ID:	V65C5120
Report #:	CT-C5120-13C-0611-R0

Test Laboratory: COMPTEST/KYOCERA

Date: 6/14/2011

FCC_ C5120_TCoil_PCS_Closed_ Ch. 25 x(longitudinal)

Communication System: CDMA-1900, Frequency: 1851.25 MHz, Duty Cycle: 1:1

Medium: T-Coil, Medium parameters used: $\sigma = 0$ mho/m, $\epsilon_r = 1$; $\rho = 0$ kg/m³

Phantom: HAC Test Arch with AMCC, Phantom section: TCoil Section

DASY4 Configuration:

Probe: AM1DV2 - 1045, , Calibrated: 9/6/2010

Sensor-Surface: 0mm (Fix Surface),

Electronics: DAE4 Sn527, Calibrated: 7/8/2010

Measurement SW: DASY4, V4.7 Build 80

Postprocessing SW: SEMCAD, V1.8 Build 186

Temperature:

Room T = 21.8 +/- 1 deg C, Liquid T = 22.0 +/- 1 deg C

General Scans_25/x (longitudinal) 4.2mm 50 x 50/ABM Interpolated SNR(x,y,z) (121x121x1):

Measurement grid: dx=10mm, dy=10mm

Signal Type: Audio File (.wav) 48k_voice_1kHz_1s.wav

BWC applied: 0.155979 dB

Device Reference Point: 0.000, 0.000, -6.30 mm

Cursor:

ABM1/ABM2 = 41.1 dB

ABM1 comp = -8.25 dB A/m

BWC Factor = 0.155979 dB

Location: -7.1, 0.8, 3.7 mm

General Scans_25/x (longitudinal) fine 2mm 8 x 8/ABM Interpolated SNR(x,y,z) (41x41x1):

Measurement grid: dx=10mm, dy=10mm

Signal Type: Audio File (.wav) 48k_voice_1kHz_1s.wav

BWC applied: 0.155979 dB

Device Reference Point: 0.000, 0.000, -6.30 mm

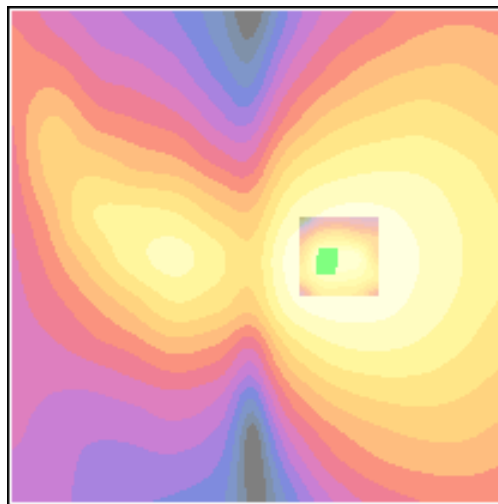
Cursor:

ABM1/ABM2 = 41.7 dB

ABM1 comp = -7.59 dB A/m

BWC Factor = 0.155979 dB

Location: -7.1, 0.2, 3.7 mm



0 dB = 113.6

Applicant	Kyocera
FCC ID:	V65C5120
Report #:	CT-C5120-13C-0611-R0

Test Laboratory: COMPTEST/KYOCERA

Date: 6/14/2011

FCC_ C5120_TCoil_PCS_Closed_ Ch. 25 y(longitudinal)

Communication System: CDMA-1900, Frequency: 1851.25 MHz, Duty Cycle: 1:1

Medium: T-Coil, Medium parameters used: $\sigma = 0$ mho/m, $\epsilon_r = 1$; $\rho = 0$ kg/m³

Phantom: HAC Test Arch with AMCC, Phantom section: TCoil Section

DASY4 Configuration:

Probe: AM1DV2 - 1045, , Calibrated: 9/6/2010

Sensor-Surface: 0mm (Fix Surface),

Electronics: DAE4 Sn527, Calibrated: 7/8/2010

Measurement SW: DASY4, V4.7 Build 80

Postprocessing SW: SEMCAD, V1.8 Build 186

Temperature:

Room T = 21.8 +/- 1 deg C, Liquid T = 22.0 +/- 1 deg C

General Scans_25/y (transversal) 4.2mm 50 x 50/ABM Interpolated SNR(x,y,z) (121x121x1):

Measurement grid: dx=10mm, dy=10mm

Signal Type: Audio File (.wav) 48k_voice_1kHz_1s.wav

BWC applied: 0.155979 dB

Device Reference Point: 0.000, 0.000, -6.30 mm

Cursor:

ABM1/ABM2 = 42.8 dB

ABM1 comp = -10.1 dB A/m

BWC Factor = 0.155979 dB

Location: -0.4, -11.3, 3.7 mm

General Scans_25/y (transversal) fine 2mm 8 x 8/ABM Interpolated SNR(x,y,z) (41x41x1):

Measurement grid: dx=10mm, dy=10mm

Signal Type: Audio File (.wav) 48k_voice_1kHz_1s.wav

BWC applied: 0.155979 dB

Device Reference Point: 0.000, 0.000, -6.30 mm

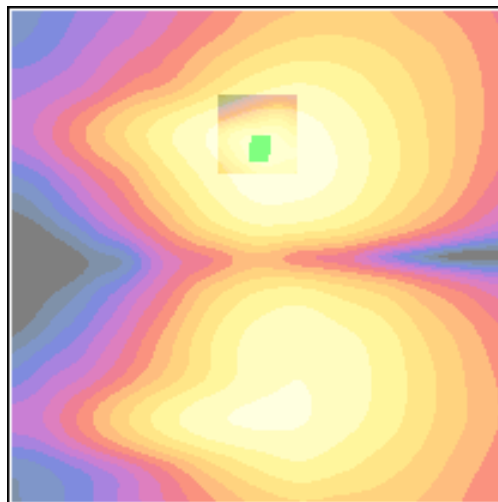
Cursor:

ABM1/ABM2 = 43.0 dB

ABM1 comp = -9.72 dB A/m

BWC Factor = 0.155979 dB

Location: -0.2, -10.7, 3.7 mm



0 dB = 137.8

Applicant	Kyocera
FCC ID:	V65C5120
Report #:	CT-C5120-13C-0611-R0

Test Laboratory: COMPTEST/KYOCERA

Date: 6/14/2011

FCC_C5120_TCoil_PCS_Closed_Ch. 600 z(axial)

Communication System: CDMA-1900, Frequency: 1880 MHz, Duty Cycle: 1:1
 Medium: T-Coil, Medium parameters used: $\sigma = 0$ mho/m, $\epsilon_r = 1$; $\rho = 0$ kg/m³
 Phantom: HAC Test Arch with AMCC, Phantom section: TCoil Section

DASY4 Configuration:

Probe: AM1DV2 - 1045, , Calibrated: 9/6/2010
 Sensor-Surface: 0mm (Fix Surface),
 Electronics: DAE4 Sn527, Calibrated: 7/8/2010
 Measurement SW: DASY4, V4.7 Build 80
 Postprocessing SW: SEMCAD, V1.8 Build 186

Temperature:

Room T = 21.8 +/- 1 deg C, Liquid T = 22.0 +/- 1 deg C

General Scans_600/z (axial) 4.2mm 50 x 50/ABM Interpolated SNR(x,y,z) (121x121x1):

Measurement grid: dx=10mm, dy=10mm
 Signal Type: Audio File (.wav) 48k_voice_1kHz_1s.wav
 BWC applied: 0.155979 dB
 Device Reference Point: 0.000, 0.000, -6.30 mm

Cursor:

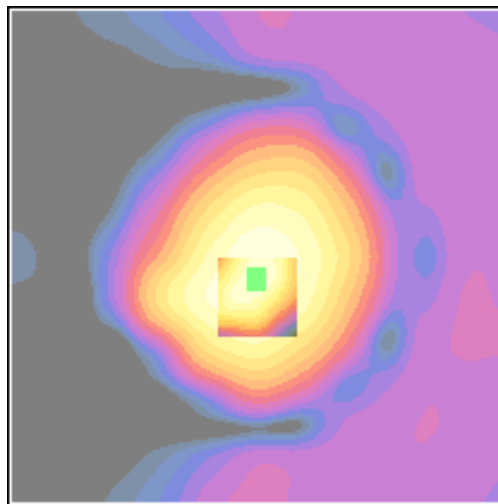
ABM1/ABM2 = 50.4 dB
 ABM1 comp = -0.175 dB A/m
 BWC Factor = 0.155979 dB
 Location: 0, 2.5, 3.7 mm

General Scans_600/z (axial) fine 2mm 8 x 8/ABM Interpolated SNR(x,y,z) (41x41x1):

Measurement grid: dx=10mm, dy=10mm
 Signal Type: Audio File (.wav) 48k_voice_1kHz_1s.wav
 BWC applied: 0.155979 dB
 Device Reference Point: 0.000, 0.000, -6.30 mm

Cursor:

ABM1/ABM2 = 50.5 dB
 ABM1 comp = 0.089 dB A/m
 BWC Factor = 0.155979 dB
 Location: 0, 2.2, 3.7 mm



0 dB = 332.6

Applicant	Kyocera
FCC ID:	V65C5120
Report #:	CT-C5120-13C-0611-R0

Test Laboratory: COMPTEST/KYOCERA

Date: 6/14/2011

FCC_C5120_TCoil_PCS_Closed_Ch. 600 x(longitudinal)

Communication System: CDMA-1900, Frequency: 1880 MHz, Duty Cycle: 1:1

Medium: T-Coil, Medium parameters used: $\sigma = 0$ mho/m, $\epsilon_r = 1$; $\rho = 0$ kg/m³

Phantom: HAC Test Arch with AMCC, Phantom section: TCoil Section

DASY4 Configuration:

Probe: AM1DV2 - 1045, , Calibrated: 9/6/2010

Sensor-Surface: 0mm (Fix Surface),

Electronics: DAE4 Sn527, Calibrated: 7/8/2010

Measurement SW: DASY4, V4.7 Build 80

Postprocessing SW: SEMCAD, V1.8 Build 186

Temperature:

Room T = 21.8 +/- 1 deg C, Liquid T = 22.0 +/- 1 deg C

General Scans_600/x (longitudinal) 4.2mm 50 x 50/ABM Interpolated SNR(x,y,z) (121x121x1):

Measurement grid: dx=10mm, dy=10mm

Signal Type: Audio File (.wav) 48k_voice_1kHz_1s.wav

BWC applied: 0.155979 dB

Device Reference Point: 0.000, 0.000, -6.30 mm

Cursor:

ABM1/ABM2 = 41.8 dB

ABM1 comp = -8.99 dB A/m

BWC Factor = 0.155979 dB

Location: -8.3, 1.2, 3.7 mm

General Scans_600/x (longitudinal) fine 2mm 8 x 8/ABM Interpolated SNR(x,y,z) (41x41x1):

Measurement grid: dx=10mm, dy=10mm

Signal Type: Audio File (.wav) 48k_voice_1kHz_1s.wav

BWC applied: 0.155979 dB

Device Reference Point: 0.000, 0.000, -6.30 mm

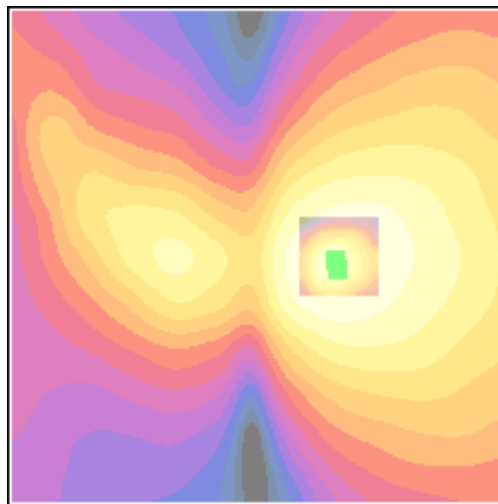
Cursor:

ABM1/ABM2 = 42.3 dB

ABM1 comp = -8.15 dB A/m

BWC Factor = 0.155979 dB

Location: -7.9, 0.4, 3.7 mm



0 dB = 122.4

Applicant	Kyocera
FCC ID:	V65C5120
Report #:	CT-C5120-13C-0611-R0

Test Laboratory: COMPTEST/KYOCERA

Date: 6/14/2011

FCC_C5120_TCoil_PCS_Closed_Ch. 600 y(transveral)

Communication System: CDMA-1900, Frequency: 1880 MHz, Duty Cycle: 1:1

Medium: T-Coil, Medium parameters used: $\sigma = 0$ mho/m, $\epsilon_r = 1$; $\rho = 0$ kg/m³

Phantom: HAC Test Arch with AMCC, Phantom section: TCoil Section

DASY4 Configuration:

Probe: AM1DV2 - 1045, , Calibrated: 9/6/2010

Sensor-Surface: 0mm (Fix Surface),

Electronics: DAE4 Sn527, Calibrated: 7/8/2010

Measurement SW: DASY4, V4.7 Build 80

Postprocessing SW: SEMCAD, V1.8 Build 186

Temperature:

Room T = 21.8 +/- 1 deg C, Liquid T = 22.0 +/- 1 deg C

General Scans_600/y (transversal) 4.2mm 50 x 50/ABM Interpolated SNR(x,y,z) (121x121x1):

Measurement grid: dx=10mm, dy=10mm

Signal Type: Audio File (.wav) 48k_voice_1kHz_1s.wav

BWC applied: 0.155979 dB

Device Reference Point: 0.000, 0.000, -6.30 mm

Cursor:

ABM1/ABM2 = 41.5 dB

ABM1 comp = -11.8 dB A/m

BWC Factor = 0.155979 dB

Location: -2.9, -11.3, 3.7 mm

General Scans_600/y (transversal) fine 2mm 8 x 8/ABM Interpolated SNR(x,y,z) (41x41x1):

Measurement grid: dx=10mm, dy=10mm

Signal Type: Audio File (.wav) 48k_voice_1kHz_1s.wav

BWC applied: 0.155979 dB

Device Reference Point: 0.000, 0.000, -6.30 mm

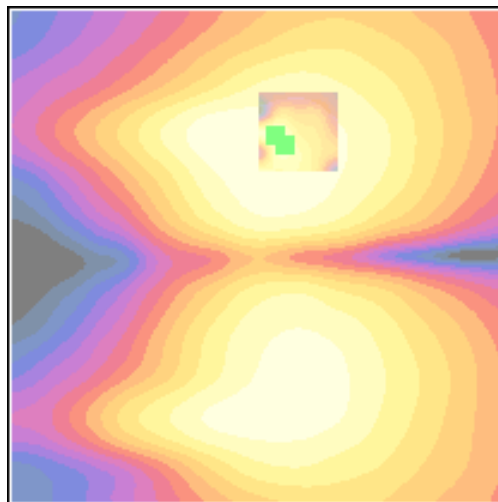
Cursor:

ABM1/ABM2 = 43.2 dB

ABM1 comp = -11.3 dB A/m

BWC Factor = 0.155979 dB

Location: -2, -12.1, 3.7 mm



0 dB = 119.5

Applicant	Kyocera
FCC ID:	V65C5120
Report #:	CT-C5120-13C-0611-R0

Test Laboratory: COMPTEST/KYOCERA

Date: 6/14/2011

FCC_C5120_TCoil_PCS_Closed_Ch. 1175 z(axial)

Communication System: CDMA-1900, Frequency: 1908.75 MHz, Duty Cycle: 1:1

Medium: T-Coil, Medium parameters used: $\sigma = 0$ mho/m, $\epsilon_r = 1$; $\rho = 0$ kg/m³

Phantom: HAC Test Arch with AMCC, Phantom section: TCoil Section

DASY4 Configuration:

Probe: AM1DV2 - 1045, , Calibrated: 9/6/2010

Sensor-Surface: 0mm (Fix Surface),

Electronics: DAE4 Sn527, Calibrated: 7/8/2010

Measurement SW: DASY4, V4.7 Build 80

Postprocessing SW: SEMCAD, V1.8 Build 186

Temperature:

Room T = 21.8 +/- 1 deg C, Liquid T = 22.0 +/- 1 deg C

General Scans_1175/z (axial) 4.2mm 50 x 50/ABM Interpolated SNR(x,y,z) (121x121x1):

Measurement grid: dx=10mm, dy=10mm

Signal Type: Audio File (.wav) 48k_voice_1kHz_1s.wav

BWC applied: 0.155979 dB

Device Reference Point: 0.000, 0.000, -6.30 mm

Cursor:

ABM1/ABM2 = 50.3 dB

ABM1 comp = -0.587 dB A/m

BWC Factor = 0.155979 dB

Location: 0.4, 2.9, 3.7 mm

General Scans_1175/z (axial) fine 2mm 8 x 8/ABM Interpolated SNR(x,y,z) (41x41x1):

Measurement grid: dx=10mm, dy=10mm

Signal Type: Audio File (.wav) 48k_voice_1kHz_1s.wav

BWC applied: 0.155979 dB

Device Reference Point: 0.000, 0.000, -6.30 mm

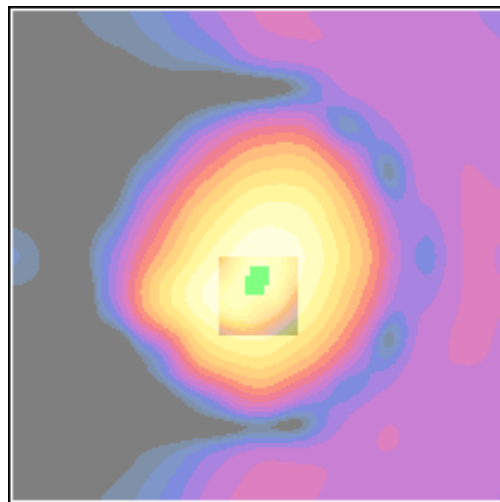
Cursor:

ABM1/ABM2 = 50.9 dB

ABM1 comp = 0.314 dB A/m

BWC Factor = 0.155979 dB

Location: 0, 2, 3.7 mm



0 dB = 328.6

Applicant	Kyocera
FCC ID:	V65C5120
Report #:	CT-C5120-13C-0611-R0

Test Laboratory: COMPTEST/KYOCERA

Date: 6/14/2011

FCC_C5120_TCoil_PCS_Closed_Ch. 1175 x(longitudinal)

Communication System: CDMA-1900, Frequency: 1908.75 MHz, Duty Cycle: 1:1

Medium: T-Coil, Medium parameters used: $\sigma = 0$ mho/m, $\epsilon_r = 1$; $\rho = 0$ kg/m³

Phantom: HAC Test Arch with AMCC, Phantom section: TCoil Section

DASY4 Configuration:

Probe: AM1DV2 - 1045, , Calibrated: 9/6/2010

Sensor-Surface: 0mm (Fix Surface),

Electronics: DAE4 Sn527, Calibrated: 7/8/2010

Measurement SW: DASY4, V4.7 Build 80

Postprocessing SW: SEMCAD, V1.8 Build 186

Temperature:

Room T = 21.8 +/- 1 deg C, Liquid T = 22.0 +/- 1 deg C

General Scans_1175/x (longitudinal) 4.2mm 50 x 50/ABM Interpolated SNR(x,y,z) (121x121x1):

Measurement grid: dx=10mm, dy=10mm

Signal Type: Audio File (.wav) 48k_voice_1kHz_1s.wav

BWC applied: 0.155979 dB

Device Reference Point: 0.000, 0.000, -6.30 mm

Cursor:

ABM1/ABM2 = 42.3 dB

ABM1 comp = -8.50 dB A/m

BWC Factor = 0.155979 dB

Location: -8.3, 0.8, 3.7 mm

General Scans_1175/x (longitudinal) fine 2mm 8 x 8/ABM Interpolated SNR(x,y,z) (41x41x1):

Measurement grid: dx=10mm, dy=10mm

Signal Type: Audio File (.wav) 48k_voice_1kHz_1s.wav

BWC applied: 0.155979 dB

Device Reference Point: 0.000, 0.000, -6.30 mm

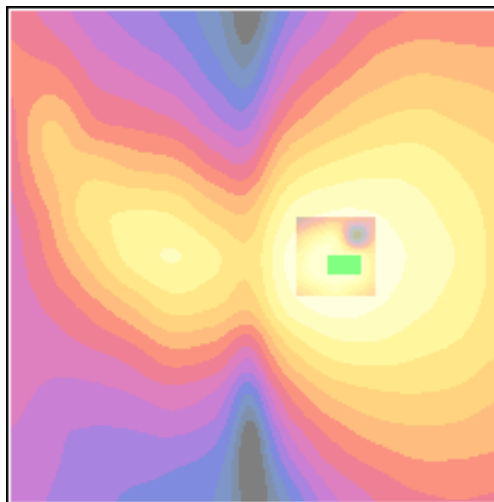
Cursor:

ABM1/ABM2 = 42.2 dB

ABM1 comp = -9.84 dB A/m

BWC Factor = 0.155979 dB

Location: -9.9, 0.8, 3.7 mm



0 dB = 130.6

Applicant	Kyocera
FCC ID:	V65C5120
Report #:	CT-C5120-13C-0611-R0

Test Laboratory: COMPTEST/KYOCERA

Date: 6/14/2011

FCC_C5120_TCoil_PCS_Closed_Ch. 1175 y(transveral)

Communication System: CDMA-1900, Frequency: 1908.75 MHz, Duty Cycle: 1:1

Medium: T-Coil, Medium parameters used: $\sigma = 0$ mho/m, $\epsilon_r = 1$; $\rho = 0$ kg/m³

Phantom: HAC Test Arch with AMCC, Phantom section: TCoil Section

DASY4 Configuration:

Probe: AM1DV2 - 1045, , Calibrated: 9/6/2010

Sensor-Surface: 0mm (Fix Surface),

Electronics: DAE4 Sn527, Calibrated: 7/8/2010

Measurement SW: DASY4, V4.7 Build 80

Postprocessing SW: SEMCAD, V1.8 Build 186

Temperature:

Room T = 21.8 +/- 1 deg C, Liquid T = 22.0 +/- 1 deg C

General Scans_1175/y (transveral) 4.2mm 50 x 50/ABM Interpolated SNR(x,y,z) (121x121x1):

Measurement grid: dx=10mm, dy=10mm

Signal Type: Audio File (.wav) 48k_voice_1kHz_1s.wav

BWC applied: 0.155979 dB

Device Reference Point: 0.000, 0.000, -6.30 mm

Cursor:

ABM1/ABM2 = 42.6 dB

ABM1 comp = -10.6 dB A/m

BWC Factor = 0.155979 dB

Location: -1.2, -11.3, 3.7 mm

General Scans_1175/y (transveral) fine 2mm 8 x 8/ABM Interpolated SNR(x,y,z) (41x41x1):

Measurement grid: dx=10mm, dy=10mm

Signal Type: Audio File (.wav) 48k_voice_1kHz_1s.wav

BWC applied: 0.155979 dB

Device Reference Point: 0.000, 0.000, -6.30 mm

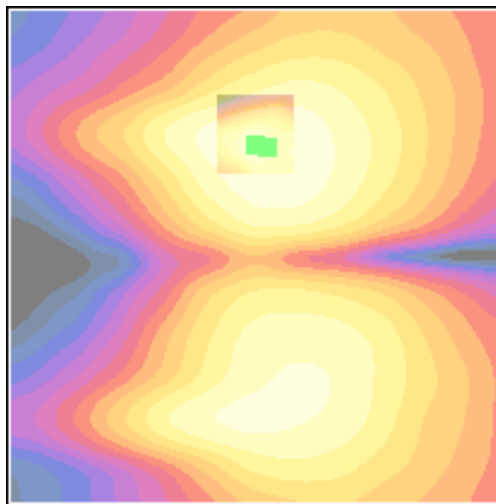
Cursor:

ABM1/ABM2 = 42.9 dB

ABM1 comp = -10.5 dB A/m

BWC Factor = 0.155979 dB

Location: 0, -11.5, 3.7 mm



0 dB = 135.4

Applicant	Kyocera
FCC ID:	V65C5120
Report #:	CT-C5120-13C-0611-R0

CELL BC-10

Slide Open

Applicant	Kyocera
FCC ID:	V65C5120
Report #:	CT-C5120-13C-0611-R0

Test Laboratory: COMPTEST/KYOCERA

Date: 6/14/2011

FCC_C5120_TCoil_CELL_Open Ch. 476 z (axial)

Communication System: CELL BC0&BC10, Frequency: 817.9 MHz, Duty Cycle: 1:1

Medium: T-Coil, Medium parameters used: $\sigma = 0$ mho/m, $\epsilon_r = 1$; $\rho = 0$ kg/m³

Phantom: HAC Test Arch with AMCC, Phantom section: TCoil Section

DASY4 Configuration:

Probe: AM1DV2 - 1045, , Calibrated: 9/6/2010

Sensor-Surface: 0mm (Fix Surface),

Electronics: DAE4 Sn527, Calibrated: 7/8/2010

Measurement SW: DASY4, V4.7 Build 80

Postprocessing SW: SEMCAD, V1.8 Build 186

Temperature:

Room T = 21.8 +/- 1 deg C, Liquid T = 22.0 +/- 1 deg C

General Scans_476/z (axial) 4.2mm 50 x 50/ABM Interpolated SNR(x,y,z) (121x121x1):

Measurement grid: dx=10mm, dy=10mm

Signal Type: Audio File (.wav) 48k_voice_1kHz_1s.wav

BWC applied: 0.155979 dB

Device Reference Point: 0.000, 0.000, -6.30 mm

Cursor:

ABM1/ABM2 = 53.6 dB

ABM1 comp = 1.06 dB A/m

BWC Factor = 0.155979 dB

Location: 2.9, 0.4, 3.7 mm

General Scans_476/z (axial) fine 2mm 8 x 8/ABM Interpolated SNR(x,y,z) (41x41x1):

Measurement grid: dx=10mm, dy=10mm

Signal Type: Audio File (.wav) 48k_voice_1kHz_1s.wav

BWC applied: 0.155979 dB

Device Reference Point: 0.000, 0.000, -6.30 mm

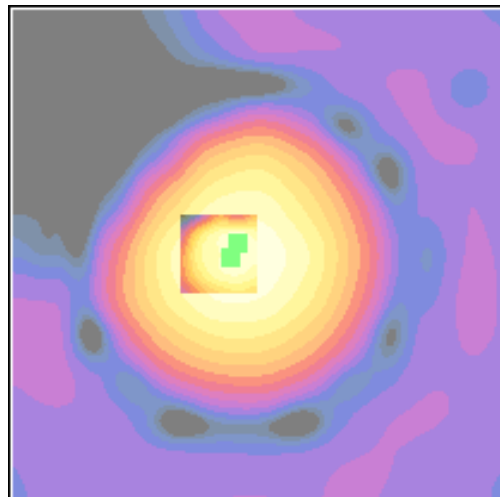
Cursor:

ABM1/ABM2 = 53.5 dB

ABM1 comp = 0.887 dB A/m

BWC Factor = 0.155979 dB

Location: 2.2, -1.2, 3.7 mm



0 dB = 480.9

Applicant	Kyocera
FCC ID:	V65C5120
Report #:	CT-C5120-13C-0611-R0

Test Laboratory: COMPTEST/KYOCERA

Date: 6/14/2011

FCC_C5120_TCoil_CELL_Open_Ch. 476 x (longitudinal)

Communication System: CELL BC0&BC10, Frequency: 817.9 MHz, Duty Cycle: 1:1

Medium: T-Coil, Medium parameters used: $\sigma = 0$ mho/m, $\epsilon_r = 1$; $\rho = 0$ kg/m³

Phantom: HAC Test Arch with AMCC, Phantom section: TCoil Section

DASY4 Configuration:

Probe: AM1DV2 - 1045, , Calibrated: 9/6/2010

Sensor-Surface: 0mm (Fix Surface),

Electronics: DAE4 Sn527, Calibrated: 7/8/2010

Measurement SW: DASY4, V4.7 Build 80

Postprocessing SW: SEMCAD, V1.8 Build 186

Temperature:

Room T = 21.8 +/- 1 deg C, Liquid T = 22.0 +/- 1 deg C

General Scans_476/x (longitudinal) 4.2mm 50 x 50/ABM Interpolated SNR(x,y,z) (121x121x1):

Measurement grid: dx=10mm, dy=10mm

Signal Type: Audio File (.wav) 48k_voice_1kHz_1s.wav

BWC applied: 0.155979 dB

Device Reference Point: 0.000, 0.000, -6.30 mm

Cursor:

ABM1/ABM2 = 43.1 dB

ABM1 comp = -8.49 dB A/m

BWC Factor = 0.155979 dB

Location: -7.5, 1.7, 3.7 mm

General Scans_476/x (longitudinal) fine 2mm 8 x 8/ABM Interpolated SNR(x,y,z) (41x41x1):

Measurement grid: dx=10mm, dy=10mm

Signal Type: Audio File (.wav) 48k_voice_1kHz_1s.wav

BWC applied: 0.155979 dB

Device Reference Point: 0.000, 0.000, -6.30 mm

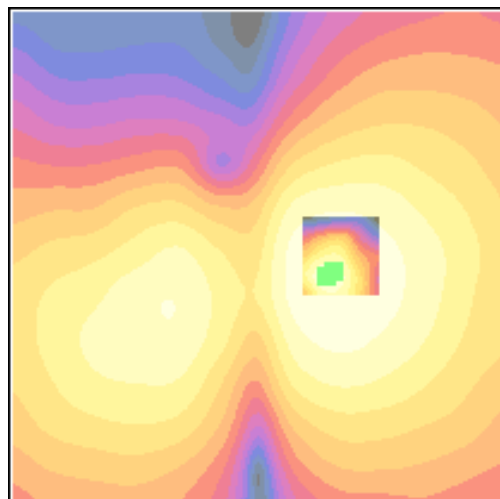
Cursor:

ABM1/ABM2 = 43.6 dB

ABM1 comp = -8.17 dB A/m

BWC Factor = 0.155979 dB

Location: -6.9, 2.2, 3.7 mm



0 dB = 143.6

Applicant	Kyocera
FCC ID:	V65C5120
Report #:	CT-C5120-13C-0611-R0

Test Laboratory: COMPTEST/KYOCERA

Date: 6/14/2011

FCC_C5120_TCoil_CELL_Open_Ch. 476 y (transversal)

Communication System: CELL BC0&BC10, Frequency: 817.9 MHz, Duty Cycle: 1:1

Medium: T-Coil, Medium parameters used: $\sigma = 0$ mho/m, $\epsilon_r = 1$; $\rho = 0$ kg/m³

Phantom: HAC Test Arch with AMCC, Phantom section: TCoil Section

DASY4 Configuration:

Probe: AM1DV2 - 1045, , Calibrated: 9/6/2010

Sensor-Surface: 0mm (Fix Surface),

Electronics: DAE4 Sn527, Calibrated: 7/8/2010

Measurement SW: DASY4, V4.7 Build 80

Postprocessing SW: SEMCAD, V1.8 Build 186

Temperature:

Room T = 21.8 +/- 1 deg C, Liquid T = 22.0 +/- 1 deg C

General Scans_476/y (transversal) 4.2mm 50 x 50/ABM Interpolated SNR(x,y,z) (121x121x1):

Measurement grid: dx=10mm, dy=10mm

Signal Type: Audio File (.wav) 48k_voice_1kHz_1s.wav

BWC applied: 0.155979 dB

Device Reference Point: 0.000, 0.000, -6.30 mm

Cursor:

ABM1/ABM2 = 44.0 dB

ABM1 comp = -10.1 dB A/m

BWC Factor = 0.155979 dB

Location: -0.8, -10.8, 3.7 mm

General Scans_476/y (transversal) fine 2mm 8 x 8/ABM Interpolated SNR(x,y,z) (41x41x1):

Measurement grid: dx=10mm, dy=10mm

Signal Type: Audio File (.wav) 48k_voice_1kHz_1s.wav

BWC applied: 0.155979 dB

Device Reference Point: 0.000, 0.000, -6.30 mm

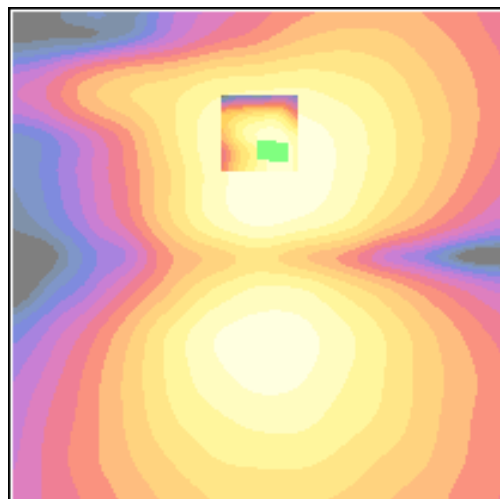
Cursor:

ABM1/ABM2 = 43.8 dB

ABM1 comp = -10.7 dB A/m

BWC Factor = 0.155979 dB

Location: -2, -10.5, 3.7 mm



0 dB = 158.8

Applicant	Kyocera
FCC ID:	V65C5120
Report #:	CT-C5120-13C-0611-R0

Test Laboratory: COMPTEST/KYOCERA

Date: 7/7/2011

FCC_C5120_TCoil_CELL_Open_Ch. 580 z (transversal)

Communication System: CDMA_Tri_BC0&10, Frequency: 820.5 MHz, Duty Cycle: 1:1

Medium: T-Coil, Medium parameters used: $\sigma = 0$ mho/m, $\epsilon_r = 1$; $\rho = 0$ kg/m³

Phantom: HAC Test Arch with AMCC, Phantom section: TCoil Section

DASY4 Configuration:

Probe: AM1DV2 - 1045, , Calibrated: 9/6/2010

Sensor-Surface: 0mm (Fix Surface),

Electronics: DAE4 Sn527, Calibrated: 7/8/2010

Measurement SW: DASY4, V4.7 Build 80

Postprocessing SW: SEMCAD, V1.8 Build 184

Temperature:

Room T = 21.8̄ 1 deg C, Liquid T = 22.0̄ 1 deg C

General Scans_580/z (axial) 4.2mm 50 x 50/ABM Interpolated SNR(x,y,z) (121x121x1):

Measurement grid: dx=10mm, dy=10mm

Signal Type: Audio File (.wav) 48k_voice_1kHz_1s.wav

BWC applied: 0.155979 dB

Device Reference Point: 0.000, 0.000, -6.30 mm

Cursor:

ABM1/ABM2 = 51.4 dB

ABM1 comp = 0.788 dB A/m

BWC Factor = 0.155979 dB

Location: 3.8, 0, 3.7 mm

General Scans_580/z (axial) fine 2mm 8 x 8/ABM Interpolated SNR(x,y,z) (41x41x1):

Measurement grid: dx=10mm, dy=10mm

Signal Type: Audio File (.wav) 48k_voice_1kHz_1s.wav

BWC applied: 0.155979 dB

Device Reference Point: 0.000, 0.000, -6.30 mm

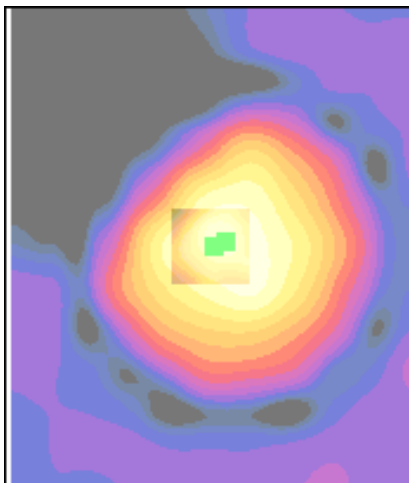
Cursor:

ABM1/ABM2 = 52.0 dB

ABM1 comp = 1.31 dB A/m

BWC Factor = 0.155979 dB

Location: 2.6, -0.6, 3.7 mm



0 dB = 369.4

Applicant	Kyocera
FCC ID:	V65C5120
Report #:	CT-C5120-13C-0611-R0

Test Laboratory: COMPTEST/KYOCERA

Date: 7/7/2011

FCC_C5120_TCoil_CELL_Open_Ch. 580 x (transversal)

Communication System: CDMA_Tri_BC0&10, Frequency: 820.5 MHz, Duty Cycle: 1:1

Medium: T-Coil, Medium parameters used: $\sigma = 0$ mho/m, $\epsilon_r = 1$; $\rho = 0$ kg/m³

Phantom: HAC Test Arch with AMCC, Phantom section: TCoil Section

DASY4 Configuration:

Probe: AM1DV2 - 1045, , Calibrated: 9/6/2010

Sensor-Surface: 0mm (Fix Surface),

Electronics: DAE4 Sn527, Calibrated: 7/8/2010

Measurement SW: DASY4, V4.7 Build 80

Postprocessing SW: SEMCAD, V1.8 Build 184

Temperature:

Room T = 21.8̄ 1 deg C, Liquid T = 22.0̄ 1 deg C

General Scans_580/x (longitudinal) 4.2mm 50 x 50/ABM Interpolated SNR(x,y,z) (121x121x1):

Measurement grid: dx=10mm, dy=10mm

Signal Type: Audio File (.wav) 48k_voice_1kHz_1s.wav

BWC applied: 0.155979 dB

Device Reference Point: 0.000, 0.000, -6.30 mm

Cursor:

ABM1/ABM2 = 36.5 dB

ABM1 comp = -8.40 dB A/m

BWC Factor = 0.155979 dB

Location: -4.6, 3.7, 3.7 mm

General Scans_580/x (longitudinal) fine 2mm 8 x 8/ABM Interpolated SNR(x,y,z) (41x41x1):

Measurement grid: dx=10mm, dy=10mm

Signal Type: Audio File (.wav) 48k_voice_1kHz_1s.wav

BWC applied: 0.155979 dB

Device Reference Point: 0.000, 0.000, -6.30 mm

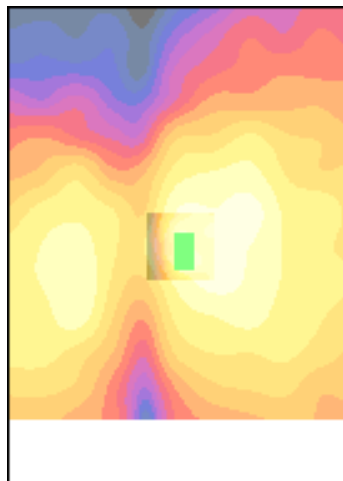
Cursor:

ABM1/ABM2 = 35.5 dB

ABM1 comp = -10.2 dB A/m

BWC Factor = 0.155979 dB

Location: -4.8, 6, 3.7 mm



0 dB = 66.5

Applicant	Kyocera
FCC ID:	V65C5120
Report #:	CT-C5120-13C-0611-R0

Test Laboratory: COMPTEST/KYOCERA

Date: 7/7/2011

FCC_C5120_TCoil_CELL_Open_Ch. 580 y (transversal)

Open FCC_C5120_TCoil_CELL BC0&10_061311

Communication System: CDMA_Tri_BC0&10, Frequency: 820.5 MHz, Duty Cycle: 1:1

Medium: T-Coil, Medium parameters used: $\sigma = 0$ mho/m, $\epsilon_r = 1$; $\rho = 0$ kg/m³

Phantom: HAC Test Arch with AMCC, Phantom section: TCoil Section

DASY4 Configuration:

Probe: AM1DV2 - 1045, , Calibrated: 9/6/2010

Sensor-Surface: 0mm (Fix Surface),

Electronics: DAE4 Sn527, Calibrated: 7/8/2010

Measurement SW: DASY4, V4.7 Build 80

Postprocessing SW: SEMCAD, V1.8 Build 184

Temperature:

Room T = 21.8̄ 1 deg C, Liquid T = 22.0̄ 1 deg C

General Scans_580/y (transversal) 4.2mm 50 x 50/ABM Interpolated SNR(x,y,z) (121x121x1):

Measurement grid: dx=10mm, dy=10mm

Signal Type: Audio File (.wav) 48k_voice_1kHz_1s.wav

BWC applied: 0.155979 dB

Device Reference Point: 0.000, 0.000, -6.30 mm

Cursor:

ABM1/ABM2 = 35.9 dB

ABM1 comp = -11.9 dB A/m

BWC Factor = 0.155979 dB

Location: -3.7, 11.7, 3.7 mm

General Scans_580/y (transversal) fine 2mm 8 x 8/ABM Interpolated SNR(x,y,z) (41x41x1):

Measurement grid: dx=10mm, dy=10mm

Signal Type: Audio File (.wav) 48k_voice_1kHz_1s.wav

BWC applied: 0.155979 dB

Device Reference Point: 0.000, 0.000, -6.30 mm

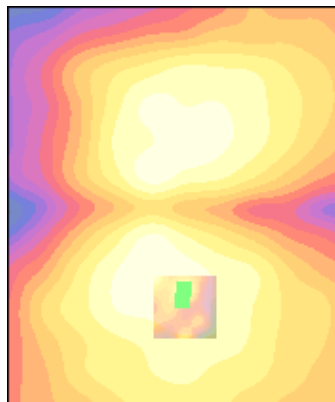
Cursor:

ABM1/ABM2 = 36.8 dB

ABM1 comp = -10.9 dB A/m

BWC Factor = 0.155979 dB

Location: -4, 10.3, 3.7 mm



0 dB = 62.4

Applicant	Kyocera
FCC ID:	V65C5120
Report #:	CT-C5120-13C-0611-R0

Test Laboratory: COMPTEST/KYOCERA

Date: 7/7/2011

FCC_C5120_TCoil_CELL_Open_Ch. 684 z (transversal)

Communication System: CDMA_Tri_BC0&10, Frequency: 823.1 MHz, Duty Cycle: 1:1

Medium: T-Coil, Medium parameters used: $\sigma = 0$ mho/m, $\epsilon_r = 1$; $\rho = 0$ kg/m³

Phantom: HAC Test Arch with AMCC, Phantom section: TCoil Section

DASY4 Configuration:

Probe: AM1DV2 - 1045, , Calibrated: 9/6/2010

Sensor-Surface: 0mm (Fix Surface),

Electronics: DAE4 Sn527, Calibrated: 7/8/2010

Measurement SW: DASY4, V4.7 Build 80

Postprocessing SW: SEMCAD, V1.8 Build 184

Temperature:

Room T = 21.8̄ 1 deg C, Liquid T = 22.0̄ 1 deg C

General Scans_684/z (axial) 4.2mm 50 x 50/ABM Interpolated SNR(x,y,z) (121x121x1):

Measurement grid: dx=10mm, dy=10mm

Signal Type: Audio File (.wav) 48k_voice_1kHz_1s.wav

BWC applied: 0.155979 dB

Device Reference Point: 0.000, 0.000, -6.30 mm

Cursor:

ABM1/ABM2 = 51.1 dB

ABM1 comp = 1.10 dB A/m

BWC Factor = 0.155979 dB

Location: 3.8, -0.4, 3.7 mm

General Scans_684/z (axial) fine 2mm 8 x 8/ABM Interpolated SNR(x,y,z) (41x41x1):

Measurement grid: dx=10mm, dy=10mm

Signal Type: Audio File (.wav) 48k_voice_1kHz_1s.wav

BWC applied: 0.155979 dB

Device Reference Point: 0.000, 0.000, -6.30 mm

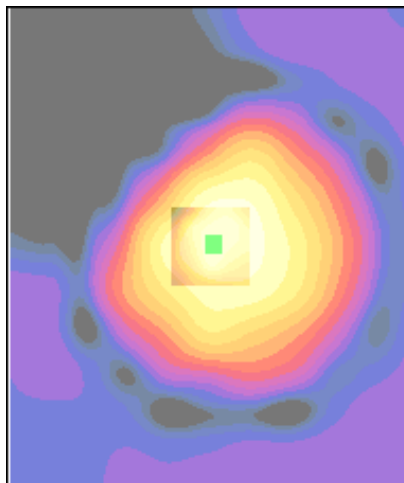
Cursor:

ABM1/ABM2 = 51.3 dB

ABM1 comp = 0.709 dB A/m

BWC Factor = 0.155979 dB

Location: 3.8, -0.2, 3.7 mm



0 dB = 358.8

Applicant	Kyocera
FCC ID:	V65C5120
Report #:	CT-C5120-13C-0611-R0

Test Laboratory: COMPTEST/KYOCERA

Date: 7/ 7/2011

FCC_C5120_TCoil_CELL_Open_Ch. 684 x (transversal)

Communication System: CDMA_Tri_BC0&10, Frequency: 823.1 MHz, Duty Cycle: 1:1

Medium: T-Coil, Medium parameters used: $\sigma = 0$ mho/m, $\epsilon_r = 1$; $\rho = 0$ kg/m³

Phantom: HAC Test Arch with AMCC, Phantom section: TCoil Section

DASY4 Configuration:

Probe: AM1DV2 - 1045, , Calibrated: 9/6/2010

Sensor-Surface: 0mm (Fix Surface),

Electronics: DAE4 Sn527, Calibrated: 7/8/2010

Measurement SW: DASY4, V4.7 Build 80

Postprocessing SW: SEMCAD, V1.8 Build 184

Temperature:

Room T = 21.8̄ 1 deg C, Liquid T = 22.0̄ 1 deg C

General Scans_684/x (longitudinal) 4.2mm 50 x 50/ABM Interpolated SNR(x,y,z) (121x121x1):

Measurement grid: dx=10mm, dy=10mm

Signal Type: Audio File (.wav) 48k_voice_1kHz_1s.wav

BWC applied: 0.155979 dB

Device Reference Point: 0.000, 0.000, -6.30 mm

Cursor:

ABM1/ABM2 = 34.7 dB

ABM1 comp = -8.39 dB A/m

BWC Factor = 0.155979 dB

Location: -4.6, -3.8, 3.7 mm

General Scans_684/x (longitudinal) fine 2mm 8 x 8/ABM Interpolated SNR(x,y,z) (41x41x1):

Measurement grid: dx=10mm, dy=10mm

Signal Type: Audio File (.wav) 48k_voice_1kHz_1s.wav

BWC applied: 0.155979 dB

Device Reference Point: 0.000, 0.000, -6.30 mm

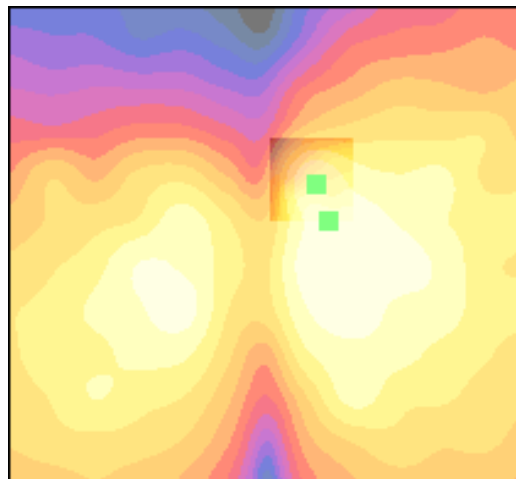
Cursor:

ABM1/ABM2 = 34.3 dB

ABM1 comp = -7.28 dB A/m

BWC Factor = 0.155979 dB

Location: -5.8, -0.2, 3.7 mm



0 dB = 54.6

Applicant	Kyocera
FCC ID:	V65C5120
Report #:	CT-C5120-13C-0611-R0

Test Laboratory: COMPTEST/KYOCERA

Date: 7/7/2011

FCC_C5120_TCoil_CELL_Open_Ch. 684 x (transversal)

Communication System: CDMA_Tri_BC0&10, Frequency: 823.1 MHz, Duty Cycle: 1:1

Medium: T-Coil, Medium parameters used: $\sigma = 0$ mho/m, $\epsilon_r = 1$; $\rho = 0$ kg/m³

Phantom: HAC Test Arch with AMCC, Phantom section: TCoil Section

DASY4 Configuration:

Probe: AM1DV2 - 1045, , Calibrated: 9/6/2010

Sensor-Surface: 0mm (Fix Surface),

Electronics: DAE4 Sn527, Calibrated: 7/8/2010

Measurement SW: DASY4, V4.7 Build 80

Postprocessing SW: SEMCAD, V1.8 Build 184

Temperature:

Room T = 21.8̄ 1 deg C, Liquid T = 22.0̄ 1 deg C

General Scans_684/x (longitudinal) 4.2mm 50 x 50/ABM Interpolated SNR(x,y,z) (121x121x1):

Measurement grid: dx=10mm, dy=10mm

Signal Type: Audio File (.wav) 48k_voice_1kHz_1s.wav

BWC applied: 0.155979 dB

Device Reference Point: 0.000, 0.000, -6.30 mm

Cursor:

ABM1/ABM2 = 34.7 dB

ABM1 comp = -8.39 dB A/m

BWC Factor = 0.155979 dB

Location: -4.6, -3.8, 3.7 mm

General Scans_684/x (longitudinal) fine 2mm 8 x 8/ABM Interpolated SNR(x,y,z) (41x41x1):

Measurement grid: dx=10mm, dy=10mm

Signal Type: Audio File (.wav) 48k_voice_1kHz_1s.wav

BWC applied: 0.155979 dB

Device Reference Point: 0.000, 0.000, -6.30 mm

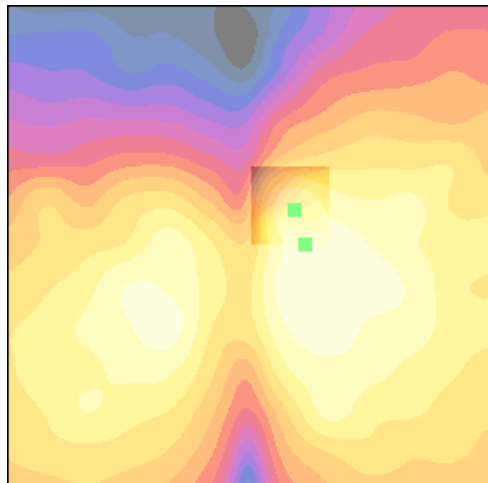
Cursor:

ABM1/ABM2 = 34.3 dB

ABM1 comp = -7.28 dB A/m

BWC Factor = 0.155979 dB

Location: -5.8, -0.2, 3.7 mm



0 dB = 54.6

Applicant	Kyocera
FCC ID:	V65C5120
Report #:	CT-C5120-13C-0611-R0

Test Laboratory: COMPTEST/KYOCERA

Date: 7/7/2011

FCC_C5120_TCoil_CELL_Open_Ch. 684 y (transversal)

Communication System: CDMA_Tri_BC0&10, Frequency: 823.1 MHz, Duty Cycle: 1:1

Medium: T-Coil, Medium parameters used: $\sigma = 0$ mho/m, $\epsilon_r = 1$; $\rho = 0$ kg/m³

Phantom: HAC Test Arch with AMCC, Phantom section: TCoil Section

DASY4 Configuration:

Probe: AM1DV2 - 1045, , Calibrated: 9/6/2010

Sensor-Surface: 0mm (Fix Surface),

Electronics: DAE4 Sn527, Calibrated: 7/8/2010

Measurement SW: DASY4, V4.7 Build 80

Postprocessing SW: SEMCAD, V1.8 Build 184

Temperature:

Room T = 21.8̄ 1 deg C, Liquid T = 22.0̄ 1 deg C

General Scans_684/y (transversal) 4.2mm 50 x 50/ABM Interpolated SNR(x,y,z) (121x121x1):

Measurement grid: dx=10mm, dy=10mm

Signal Type: Audio File (.wav) 48k_voice_1kHz_1s.wav

BWC applied: 0.155979 dB

Device Reference Point: 0.000, 0.000, -6.30 mm

Cursor:

ABM1/ABM2 = 35.5 dB

ABM1 comp = -8.51 dB A/m

BWC Factor = 0.155979 dB

Location: -0.8, 10.4, 3.7 mm

General Scans_684/y (transversal) fine 2mm 8 x 8/ABM Interpolated SNR(x,y,z) (41x41x1):

Measurement grid: dx=10mm, dy=10mm

Signal Type: Audio File (.wav) 48k_voice_1kHz_1s.wav

BWC applied: 0.155979 dB

Device Reference Point: 0.000, 0.000, -6.30 mm

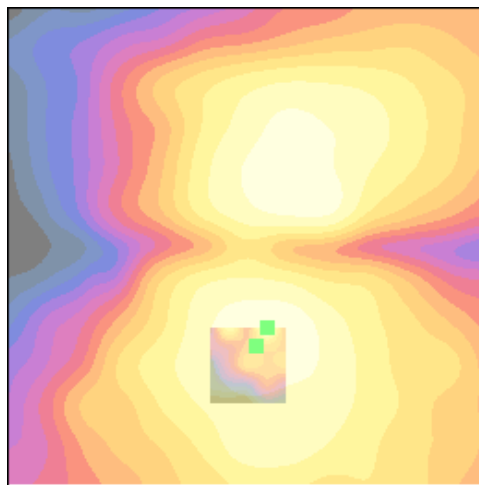
Cursor:

ABM1/ABM2 = 37.6 dB

ABM1 comp = -8.55 dB A/m

BWC Factor = 0.155979 dB

Location: -2, 8.5, 3.7 mm



0 dB = 59.8

Applicant	Kyocera
FCC ID:	V65C5120
Report #:	CT-C5120-13C-0611-R0

CELL BC-0 Slide Open

Applicant	Kyocera
FCC ID:	V65C5120
Report #:	CT-C5120-13C-0611-R0

Test Laboratory: COMPTEST/KYOCERA

Date: 7/7/2011

FCC_C5120_TCoil_CELL_Open_Ch. 1013 z (transversal)

Communication System: CDMA_Tri_BC0&10, Frequency: 824.7 MHz, Duty Cycle: 1:1
 Medium: T-Coil, Medium parameters used: $\sigma = 0$ mho/m, $\epsilon_r = 1$; $\rho = 0$ kg/m³
 Phantom: HAC Test Arch with AMCC, Phantom section: TCoil Section

DASY4 Configuration:

Probe: AM1DV2 - 1045, , Calibrated: 9/6/2010
 Sensor-Surface: 0mm (Fix Surface),
 Electronics: DAE4 Sn527, Calibrated: 7/8/2010
 Measurement SW: DASY4, V4.7 Build 80
 Postprocessing SW: SEMCAD, V1.8 Build 184

Temperature:

Room T = 21.8̄ 1 deg C, Liquid T = 22.0̄ 1 deg C

General Scans_1013/z (axial) 4.2mm 50 x 50/ABM Interpolated SNR(x,y,z) (121x121x1):

Measurement grid: dx=10mm, dy=10mm
 Signal Type: Audio File (.wav) 48k_voice_1kHz_1s.wav
 BWC applied: 0.155979 dB
 Device Reference Point: 0.000, 0.000, -6.30 mm

Cursor:

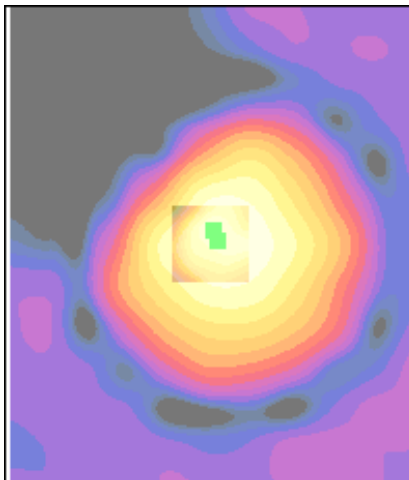
ABM1/ABM2 = 50.3 dB
 ABM1 comp = 0.725 dB A/m
 BWC Factor = 0.155979 dB
 Location: 3.3, -0.4, 3.7 mm

General Scans_1013/z (axial) fine 2mm 8 x 8/ABM Interpolated SNR(x,y,z) (41x41x1):

Measurement grid: dx=10mm, dy=10mm
 Signal Type: Audio File (.wav) 48k_voice_1kHz_1s.wav
 BWC applied: 0.155979 dB
 Device Reference Point: 0.000, 0.000, -6.30 mm

Cursor:

ABM1/ABM2 = 51.3 dB
 ABM1 comp = 0.104 dB A/m
 BWC Factor = 0.155979 dB
 Location: 3.8, -1.6, 3.7 mm



0 dB = 327.1

Applicant	Kyocera
FCC ID:	V65C5120
Report #:	CT-C5120-13C-0611-R0

Test Laboratory: COMPTEST/KYOCERA

Date: 7/7/2011

FCC_C5120_TCoil_CELL_Open_Ch. 1013 x (transversal)

Communication System: CDMA_Tri_BC0&10, Frequency: 824.7 MHz, Duty Cycle: 1:1

Medium: T-Coil, Medium parameters used: $\sigma = 0$ mho/m, $\epsilon_r = 1$; $\rho = 0$ kg/m³

Phantom: HAC Test Arch with AMCC, Phantom section: TCoil Section

DASY4 Configuration:

Probe: AM1DV2 - 1045, , Calibrated: 9/6/2010

Sensor-Surface: 0mm (Fix Surface),

Electronics: DAE4 Sn527, Calibrated: 7/8/2010

Measurement SW: DASY4, V4.7 Build 80

Postprocessing SW: SEMCAD, V1.8 Build 184

Temperature:

Room T = 21.8̄ 1 deg C, Liquid T = 22.0̄ 1 deg C

General Scans_1013/x (longitudinal) 4.2mm 50 x 50/ABM Interpolated SNR(x,y,z) (121x121x1):

Measurement grid: dx=10mm, dy=10mm

Signal Type: Audio File (.wav) 48k_voice_1kHz_1s.wav

BWC applied: 0.155979 dB

Device Reference Point: 0.000, 0.000, -6.30 mm

Cursor:

ABM1/ABM2 = 35.1 dB

ABM1 comp = -9.08 dB A/m

BWC Factor = 0.155979 dB

Location: -7.9, 1.7, 3.7 mm

General Scans_1013/x (longitudinal) fine 2mm 8 x 8/ABM Interpolated SNR(x,y,z) (41x41x1):

Measurement grid: dx=10mm, dy=10mm

Signal Type: Audio File (.wav) 48k_voice_1kHz_1s.wav

BWC applied: 0.155979 dB

Device Reference Point: 0.000, 0.000, -6.30 mm

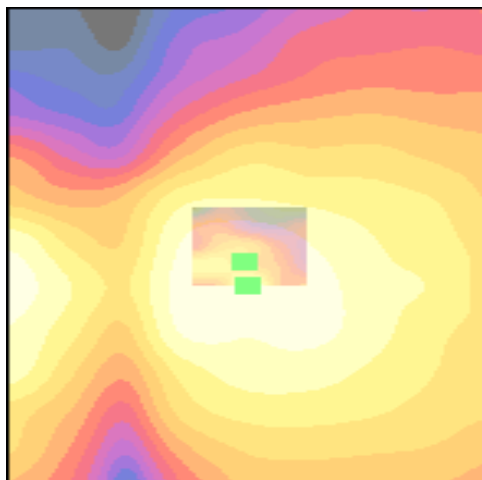
Cursor:

ABM1/ABM2 = 37.0 dB

ABM1 comp = -9.39 dB A/m

BWC Factor = 0.155979 dB

Location: -8.3, 4, 3.7 mm



0 dB = 56.8

Applicant	Kyocera
FCC ID:	V65C5120
Report #:	CT-C5120-13C-0611-R0

Test Laboratory: COMPTEST/KYOCERA

Date: 7/7/2011

FCC_C5120_TCoil_CELL_Open_Ch. 1013 y (transversal)

Communication System: CDMA_Tri_BC0&10, Frequency: 824.7 MHz, Duty Cycle: 1:1

Medium: T-Coil, Medium parameters used: $\sigma = 0$ mho/m, $\epsilon_r = 1$; $\rho = 0$ kg/m³

Phantom: HAC Test Arch with AMCC, Phantom section: TCoil Section

DASY4 Configuration:

Probe: AM1DV2 - 1045, , Calibrated: 9/6/2010

Sensor-Surface: 0mm (Fix Surface),

Electronics: DAE4 Sn527, Calibrated: 7/8/2010

Measurement SW: DASY4, V4.7 Build 80

Postprocessing SW: SEMCAD, V1.8 Build 184

Temperature:

Room T = 21.8̄ 1 deg C, Liquid T = 22.0̄ 1 deg C

General Scans_1013/y (transversal) 4.2mm 50 x 50/ABM Interpolated SNR(x,y,z) (121x121x1):

Measurement grid: dx=10mm, dy=10mm

Signal Type: Audio File (.wav) 48k_voice_1kHz_1s.wav

BWC applied: 0.155979 dB

Device Reference Point: 0.000, 0.000, -6.30 mm

Cursor:

ABM1/ABM2 = 36.6 dB

ABM1 comp = -8.29 dB A/m

BWC Factor = 0.155979 dB

Location: -0.8, 8.7, 3.7 mm

General Scans_1013/y (transversal) fine 2mm 8 x 8/ABM Interpolated SNR(x,y,z) (41x41x1):

Measurement grid: dx=10mm, dy=10mm

Signal Type: Audio File (.wav) 48k_voice_1kHz_1s.wav

Output Gain: 28.58

Measure Window Start: 300ms

Measure Window Length: 2000ms

BWC applied: 0.155979 dB

Device Reference Point: 0.000, 0.000, -6.30 mm

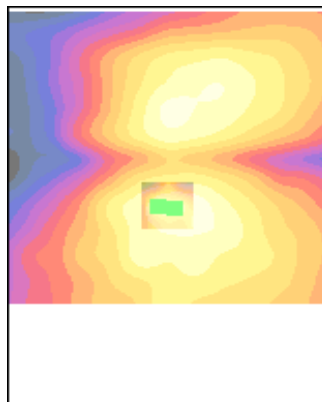
Cursor:

ABM1/ABM2 = 36.8 dB

ABM1 comp = -6.82 dB A/m

BWC Factor = 0.155979 dB

Location: 1.6, 8.3, 3.7 mm



0 dB = 67.6

Applicant	Kyocera
FCC ID:	V65C5120
Report #:	CT-C5120-13C-0611-R0

Test Laboratory: COMPTEST/KYOCERA

Date: 6/14/2011

FCC_C5120_TCoil_CELL_Open_Ch. 384 z (axial)

Communication System: CELL BC0&BC10, Frequency: 836.49 MHz, Duty Cycle: 1:1

Medium: T-Coil, Medium parameters used: $\sigma = 0$ mho/m, $\epsilon_r = 1$; $\rho = 0$ kg/m³

Phantom: HAC Test Arch with AMCC, Phantom section: TCoil Section

DASY4 Configuration:

Probe: AM1DV2 - 1045, , Calibrated: 9/6/2010

Sensor-Surface: 0mm (Fix Surface),

Electronics: DAE4 Sn527, Calibrated: 7/8/2010

Measurement SW: DASY4, V4.7 Build 80

Postprocessing SW: SEMCAD, V1.8 Build 186

Temperature:

Room T = 21.8 +/- 1 deg C, Liquid T = 22.0 +/- 1 deg C

General Scans_384/z (axial) 4.2mm 50 x 50/ABM Interpolated SNR(x,y,z) (121x121x1):

Measurement grid: dx=10mm, dy=10mm

Signal Type: Audio File (.wav) 48k_voice_1kHz_1s.wav

BWC applied: 0.155979 dB

Device Reference Point: 0.000, 0.000, -6.30 mm

Cursor:

ABM1/ABM2 = 53.5 dB

ABM1 comp = 1.00 dB A/m

BWC Factor = 0.155979 dB

Location: 2.5, 0, 3.7 mm

General Scans_384/z (axial) fine 2mm 8 x 8/ABM Interpolated SNR(x,y,z) (41x41x1):

Measurement grid: dx=10mm, dy=10mm

Signal Type: Audio File (.wav) 48k_voice_1kHz_1s.wav

BWC applied: 0.155979 dB

Device Reference Point: 0.000, 0.000, -6.30 mm

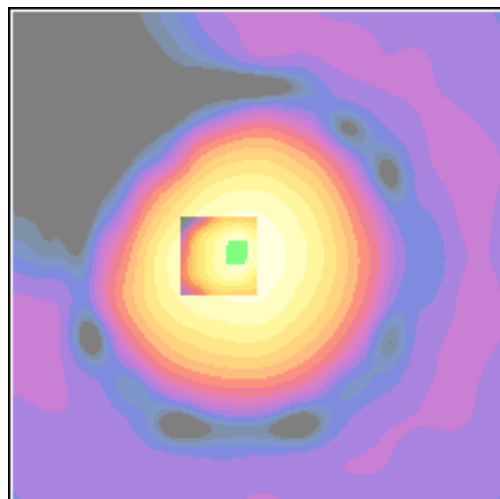
Cursor:

ABM1/ABM2 = 53.9 dB

ABM1 comp = 1.52 dB A/m

BWC Factor = 0.155979 dB

Location: 2.2, -0.6, 3.7 mm



0 dB = 470.6

Applicant	Kyocera
FCC ID:	V65C5120
Report #:	CT-C5120-13C-0611-R0

Test Laboratory: COMPTEST/KYOCERA

Date: 6/14/2011

FCC_C5120_TCoil_CELL_Open_Ch. 384/x (longitudinal)

Communication System: CELL BC0&BC10, Frequency: 836.49 MHz, Duty Cycle: 1:1

Medium: T-Coil, Medium parameters used: $\sigma = 0$ mho/m, $\epsilon_r = 1$; $\rho = 0$ kg/m³

Phantom: HAC Test Arch with AMCC, Phantom section: TCoil Section

DASY4 Configuration:

Probe: AM1DV2 - 1045, , Calibrated: 9/6/2010

Sensor-Surface: 0mm (Fix Surface),

Electronics: DAE4 Sn527, Calibrated: 7/8/2010

Measurement SW: DASY4, V4.7 Build 80

Postprocessing SW: SEMCAD, V1.8 Build 186

Temperature:

Room T = 21.8 +/- 1 deg C, Liquid T = 22.0 +/- 1 deg C

General Scans_384/x (longitudinal) 4.2mm 50 x 50/ABM Interpolated SNR(x,y,z) (121x121x1):

Measurement grid: dx=10mm, dy=10mm

Signal Type: Audio File (.wav) 48k_voice_1kHz_1s.wav

BWC applied: 0.155979 dB

Device Reference Point: 0.000, 0.000, -6.30 mm

Cursor:

ABM1/ABM2 = 43.5 dB

ABM1 comp = -8.90 dB A/m

BWC Factor = 0.155979 dB

Location: -7.5, 2.9, 3.7 mm

General Scans_384/x (longitudinal) fine 2mm 8 x 8/ABM Interpolated SNR(x,y,z) (41x41x1):

Measurement grid: dx=10mm, dy=10mm

Signal Type: Audio File (.wav) 48k_voice_1kHz_1s.wav

BWC applied: 0.155979 dB

Device Reference Point: 0.000, 0.000, -6.30 mm

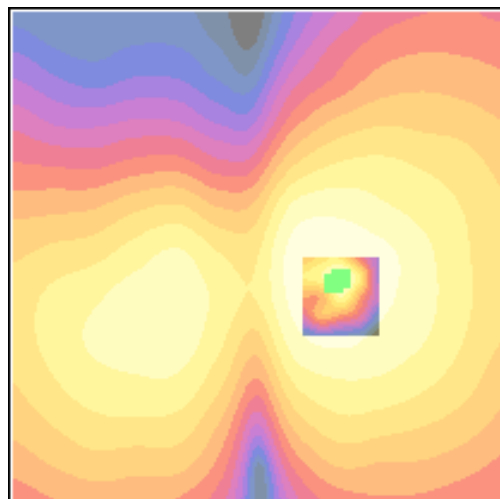
Cursor:

ABM1/ABM2 = 43.7 dB

ABM1 comp = -8.77 dB A/m

BWC Factor = 0.155979 dB

Location: -8.3, 2.4, 3.7 mm



0 dB = 148.9

Applicant	Kyocera
FCC ID:	V65C5120
Report #:	CT-C5120-13C-0611-R0

Test Laboratory: COMPTEST/KYOCERA

Date: 6/14/2011

FCC_C5120_TCoil_CELL_Open_Ch. 384/y (transversal)

Communication System: CELL BC0&BC10, Frequency: 836.49 MHz, Duty Cycle: 1:1

Medium: T-Coil, Medium parameters used: $\sigma = 0$ mho/m, $\epsilon_r = 1$; $\rho = 0$ kg/m³

Phantom: HAC Test Arch with AMCC, Phantom section: TCoil Section

DASY4 Configuration:

Probe: AM1DV2 - 1045, , Calibrated: 9/6/2010

Sensor-Surface: 0mm (Fix Surface),

Electronics: DAE4 Sn527, Calibrated: 7/8/2010

Measurement SW: DASY4, V4.7 Build 80

Postprocessing SW: SEMCAD, V1.8 Build 186

Temperature:

Room T = 21.8 +/- 1 deg C, Liquid T = 22.0 +/- 1 deg C

General Scans_384/y (transversal) 4.2mm 50 x 50/ABM Interpolated SNR(x,y,z) (121x121x1):

Measurement grid: dx=10mm, dy=10mm

Signal Type: Audio File (.wav) 48k_voice_1kHz_1s.wav

BWC applied: 0.155979 dB

Device Reference Point: 0.000, 0.000, -6.30 mm

Cursor:

ABM1/ABM2 = 43.8 dB

ABM1 comp = -10.9 dB A/m

BWC Factor = 0.155979 dB

Location: -1.7, -10.8, 3.7 mm

General Scans_384/y (transversal) fine 2mm 8 x 8/ABM Interpolated SNR(x,y,z) (41x41x1):

Measurement grid: dx=10mm, dy=10mm

Signal Type: Audio File (.wav) 48k_voice_1kHz_1s.wav

BWC applied: 0.155979 dB

Device Reference Point: 0.000, 0.000, -6.30 mm

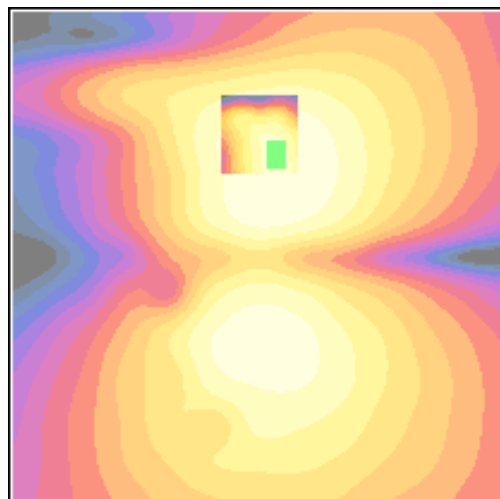
Cursor:

ABM1/ABM2 = 43.9 dB

ABM1 comp = -10.0 dB A/m

BWC Factor = 0.155979 dB

Location: -1.8, -9.9, 3.7 mm



0 dB = 155.2

Applicant	Kyocera
FCC ID:	V65C5120
Report #:	CT-C5120-13C-0611-R0

Test Laboratory: COMPTEST/KYOCERA

Date: 6/14/2011

FCC_C5120_TCoil_CELL_Open_Ch. 777 z (axial)

Communication System: CELL BC0&BC10, Frequency: 848.31 MHz, Duty Cycle: 1:1

Medium: T-Coil, Medium parameters used: $\sigma = 0$ mho/m, $\epsilon_r = 1$; $\rho = 0$ kg/m³

Phantom: HAC Test Arch with AMCC, Phantom section: TCoil Section

DASY4 Configuration:

Probe: AM1DV2 - 1045, , Calibrated: 9/6/2010

Sensor-Surface: 0mm (Fix Surface),

Electronics: DAE4 Sn527, Calibrated: 7/8/2010

Measurement SW: DASY4, V4.7 Build 80

Postprocessing SW: SEMCAD, V1.8 Build 186

Temperature:

Room T = 21.8 +/- 1 deg C, Liquid T = 22.0 +/- 1 deg C

General Scans_777/z (axial) 4.2mm 50 x 50/ABM Interpolated SNR(x,y,z) (121x121x1):

Measurement grid: dx=10mm, dy=10mm

Signal Type: Audio File (.wav) 48k_voice_1kHz_1s.wav

BWC applied: 0.155979 dB

Device Reference Point: 0.000, 0.000, -6.30 mm

Cursor:

ABM1/ABM2 = 53.3 dB

ABM1 comp = 0.741 dB A/m

BWC Factor = 0.155979 dB

Location: 2.9, 0, 3.7 mm

General Scans_777/z (axial) fine 2mm 8 x 8/ABM Interpolated SNR(x,y,z) (41x41x1):

Measurement grid: dx=10mm, dy=10mm

Signal Type: Audio File (.wav) 48k_voice_1kHz_1s.wav

BWC applied: 0.155979 dB

Device Reference Point: 0.000, 0.000, -6.30 mm

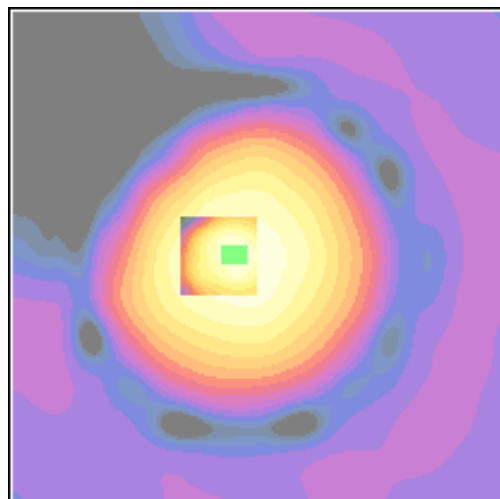
Cursor:

ABM1/ABM2 = 53.8 dB

ABM1 comp = 1.51 dB A/m

BWC Factor = 0.155979 dB

Location: 2.2, 0, 3.7 mm



0 dB = 462.4

Applicant	Kyocera
FCC ID:	V65C5120
Report #:	CT-C5120-13C-0611-R0

Test Laboratory: COMPTEST/KYOCERA

Date: 6/14/2011

FCC_C5120_TCoil_CELL_Open_Ch. 777/x (longitudinal)

Communication System: CELL BC0&BC10, Frequency: 848.31 MHz, Duty Cycle: 1:1

Medium: T-Coil, Medium parameters used: $\sigma = 0$ mho/m, $\epsilon_r = 1$; $\rho = 0$ kg/m³

Phantom: HAC Test Arch with AMCC, Phantom section: TCoil Section

DASY4 Configuration:

Probe: AM1DV2 - 1045, , Calibrated: 9/6/2010

Sensor-Surface: 0mm (Fix Surface),

Electronics: DAE4 Sn527, Calibrated: 7/8/2010

Measurement SW: DASY4, V4.7 Build 80

Postprocessing SW: SEMCAD, V1.8 Build 186

Temperature:

Room T = 21.8 +/- 1 deg C, Liquid T = 22.0 +/- 1 deg C

General Scans_777/x (longitudinal) 4.2mm 50 x 50/ABM Interpolated SNR(x,y,z) (121x121x1):

Measurement grid: dx=10mm, dy=10mm

Signal Type: Audio File (.wav) 48k_voice_1kHz_1s.wav

BWC applied: 0.155979 dB

Device Reference Point: 0.000, 0.000, -6.30 mm

Cursor:

ABM1/ABM2 = 43.9 dB

ABM1 comp = -8.97 dB A/m

BWC Factor = 0.155979 dB

Location: -7.9, 3.7, 3.7 mm

General Scans_777/x (longitudinal) fine 2mm 8 x 8/ABM Interpolated SNR(x,y,z) (41x41x1):

Measurement grid: dx=10mm, dy=10mm

Signal Type: Audio File (.wav) 48k_voice_1kHz_1s.wav

BWC applied: 0.155979 dB

Device Reference Point: 0.000, 0.000, -6.30 mm

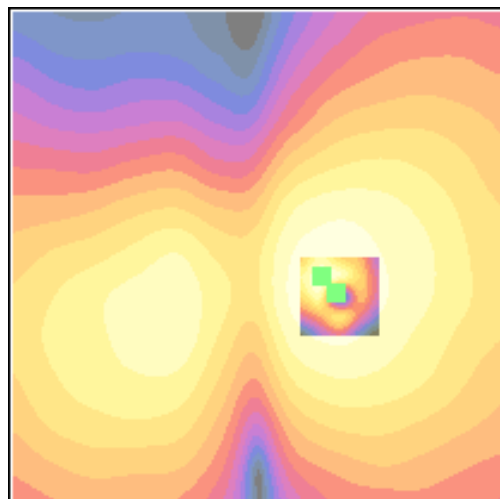
Cursor:

ABM1/ABM2 = 43.7 dB

ABM1 comp = -7.99 dB A/m

BWC Factor = 0.155979 dB

Location: -6.5, 2.2, 3.7 mm



0 dB = 156.9

Applicant	Kyocera
FCC ID:	V65C5120
Report #:	CT-C5120-13C-0611-R0

Test Laboratory: COMPTEST/KYOCERA

Date: 6/14/2011

FCC_C5120_TCoil_CELL_Open_Ch. 777/y (transversal)

Communication System: CELL BC0&BC10, Frequency: 848.31 MHz, Duty Cycle: 1:1

Medium: T-Coil, Medium parameters used: $\sigma = 0$ mho/m, $\epsilon_r = 1$; $\rho = 0$ kg/m³

Phantom: HAC Test Arch with AMCC, Phantom section: TCoil Section

DASY4 Configuration:

Probe: AM1DV2 - 1045, , Calibrated: 9/6/2010

Sensor-Surface: 0mm (Fix Surface),

Electronics: DAE4 Sn527, Calibrated: 7/8/2010

Measurement SW: DASY4, V4.7 Build 80

Postprocessing SW: SEMCAD, V1.8 Build 186

Temperature:

Room T = 21.8 +/- 1 deg C, Liquid T = 22.0 +/- 1 deg C

General Scans_777/y (transversal) 4.2mm 50 x 50/ABM Interpolated SNR(x,y,z) (121x121x1):

Measurement grid: dx=10mm, dy=10mm

Signal Type: Audio File (.wav) 48k_voice_1kHz_1s.wav

BWC applied: 0.155979 dB

Device Reference Point: 0.000, 0.000, -6.30 mm

Cursor:

ABM1/ABM2 = 43.9 dB

ABM1 comp = -10.6 dB A/m

BWC Factor = 0.155979 dB

Location: -0.4, -11.3, 3.7 mm

General Scans_777/y (transversal) fine 2mm 8 x 8/ABM Interpolated SNR(x,y,z) (41x41x1):

Measurement grid: dx=10mm, dy=10mm

Signal Type: Audio File (.wav) 48k_voice_1kHz_1s.wav

BWC applied: 0.155979 dB

Device Reference Point: 0.000, 0.000, -6.30 mm

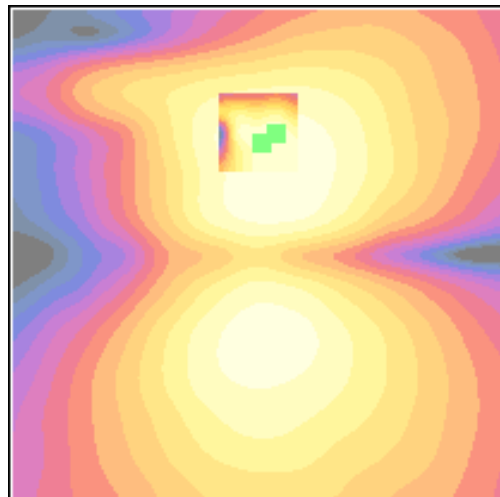
Cursor:

ABM1/ABM2 = 43.9 dB

ABM1 comp = -12.1 dB A/m

BWC Factor = 0.155979 dB

Location: -1.8, -12.3, 3.7 mm



0 dB = 157.2

Applicant	Kyocera
FCC ID:	V65C5120
Report #:	CT-C5120-13C-0611-R0

PCS Slide Open

Applicant	Kyocera
FCC ID:	V65C5120
Report #:	CT-C5120-13C-0611-R0

Test Laboratory: COMPTEST/KYOCERA

Date: 6/15/2011

FCC_C5120_TCoil_PCS_Open_Ch. 25 z(axial)

Communication System: CDMA-1900, Frequency: 1851.25 MHz, Duty Cycle: 1:1

Medium: T-Coil, Medium parameters used: $\sigma = 0$ mho/m, $\epsilon_r = 1$; $\rho = 0$ kg/m³

Phantom: HAC Test Arch with AMCC, Phantom section: TCoil Section

DASY4 Configuration:

Probe: AM1DV2 - 1045, , Calibrated: 9/6/2010

Sensor-Surface: 0mm (Fix Surface),

Electronics: DAE4 Sn527, Calibrated: 7/8/2010

Measurement SW: DASY4, V4.7 Build 80

Postprocessing SW: SEMCAD, V1.8 Build 186

Temperature:

Room T = 21.8̄ 1 deg C, Liquid T = 22.0̄ 1 deg C

General Scans_25/z (axial) 4.2mm 50 x 50/ABM Interpolated SNR(x,y,z) (121x121x1):

Measurement grid: dx=10mm, dy=10mm

Signal Type: Audio File (.wav) 48k_voice_1kHz_1s.wav

BWC applied: 0.157003 dB

Device Reference Point: 0.000, 0.000, -6.30 mm

Cursor:

ABM1/ABM2 = 53.3 dB

ABM1 comp = 0.860 dB A/m

BWC Factor = 0.157003 dB

Location: 2.1, 0, 3.7 mm

General Scans_25/z (axial) fine 2mm 8 x 8/ABM Interpolated SNR(x,y,z) (41x41x1):

Measurement grid: dx=10mm, dy=10mm

Signal Type: Audio File (.wav) 48k_voice_1kHz_1s.wav

BWC applied: 0.157003 dB

Device Reference Point: 0.000, 0.000, -6.30 mm

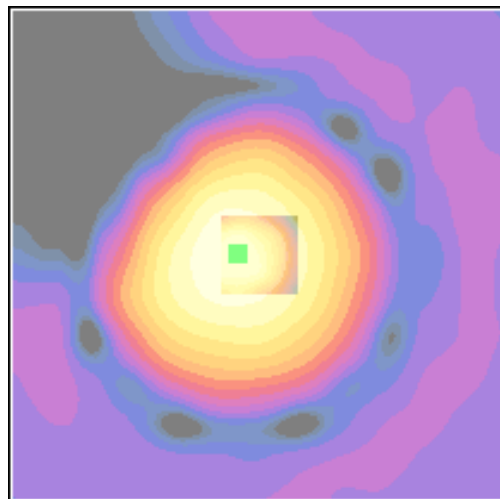
Cursor:

ABM1/ABM2 = 53.3 dB

ABM1 comp = 1.01 dB A/m

BWC Factor = 0.157003 dB

Location: 2.2, 0, 3.7 mm



0 dB = 461.9

Applicant	Kyocera
FCC ID:	V65C5120
Report #:	CT-C5120-13C-0611-R0

Test Laboratory: COMPTEST/KYOCERA

Date: 6/15/2011

FCC_C5120_TCoil_PCS_Open_Ch. 25 x(longitudinal)

Communication System: CDMA-1900, Frequency: 1851.25 MHz, Duty Cycle: 1:1

Medium: T-Coil, Medium parameters used: $\sigma = 0$ mho/m, $\epsilon_r = 1$; $\rho = 0$ kg/m³

Phantom: HAC Test Arch with AMCC, Phantom section: TCoil Section

DASY4 Configuration:

Probe: AM1DV2 - 1045, , Calibrated: 9/6/2010

Sensor-Surface: 0mm (Fix Surface),

Electronics: DAE4 Sn527, Calibrated: 7/8/2010

Measurement SW: DASY4, V4.7 Build 80

Postprocessing SW: SEMCAD, V1.8 Build 186

Temperature:

Room T = 21.8̄ 1 deg C, Liquid T = 22.0̄ 1 deg C

General Scans_25/x (longitudinal) 4.2mm 50 x 50/ABM Interpolated SNR(x,y,z) (121x121x1):

Measurement grid: dx=10mm, dy=10mm

Signal Type: Audio File (.wav) 48k_voice_1kHz_1s.wav

BWC applied: 0.157003 dB

Device Reference Point: 0.000, 0.000, -6.30 mm

Cursor:

ABM1/ABM2 = 43.2 dB

ABM1 comp = -9.15 dB A/m

BWC Factor = 0.157003 dB

Location: -7.9, 3.3, 3.7 mm

General Scans_25/x (longitudinal) fine 2mm 8 x 8/ABM Interpolated SNR(x,y,z) (41x41x1):

Measurement grid: dx=10mm, dy=10mm

Signal Type: Audio File (.wav) 48k_voice_1kHz_1s.wav

BWC applied: 0.157003 dB

Device Reference Point: 0.000, 0.000, -6.30 mm

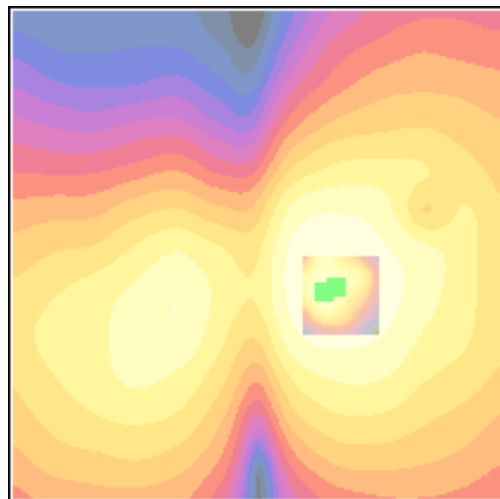
Cursor:

ABM1/ABM2 = 43.5 dB

ABM1 comp = -8.45 dB A/m

BWC Factor = 0.157003 dB

Location: -6.5, 3.8, 3.7 mm



0 dB = 144.4

Applicant	Kyocera
FCC ID:	V65C5120
Report #:	CT-C5120-13C-0611-R0

Test Laboratory: COMPTEST/KYOCERA

Date: 6/15/2011

FCC_C5120_TCoil_PCS_Open_Ch. 25 y(transveral)

Communication System: CDMA-1900, Frequency: 1851.25 MHz, Duty Cycle: 1:1

Medium: T-Coil, Medium parameters used: $\sigma = 0$ mho/m, $\epsilon_r = 1$; $\rho = 0$ kg/m³

Phantom: HAC Test Arch with AMCC, Phantom section: TCoil Section

DASY4 Configuration:

Probe: AM1DV2 - 1045, , Calibrated: 9/6/2010

Sensor-Surface: 0mm (Fix Surface),

Electronics: DAE4 Sn527, Calibrated: 7/8/2010

Measurement SW: DASY4, V4.7 Build 80

Postprocessing SW: SEMCAD, V1.8 Build 186

Temperature:

Room T = 21.8̄ 1 deg C, Liquid T = 22.0̄ 1 deg C

General Scans_25/y (transveral) 4.2mm 50 x 50/ABM Interpolated SNR(x,y,z) (121x121x1):

Measurement grid: dx=10mm, dy=10mm

Signal Type: Audio File (.wav) 48k_voice_1kHz_1s.wav

BWC applied: 0.157003 dB

Device Reference Point: 0.000, 0.000, -6.30 mm

Cursor:

ABM1/ABM2 = 43.7 dB

ABM1 comp = -10.5 dB A/m

BWC Factor = 0.157003 dB

Location: -0.4, -10.8, 3.7 mm

General Scans_25/y (transveral) fine 2mm 8 x 8/ABM Interpolated SNR(x,y,z) (41x41x1):

Measurement grid: dx=10mm, dy=10mm

Signal Type: Audio File (.wav) 48k_voice_1kHz_1s.wav

BWC applied: 0.157003 dB

Device Reference Point: 0.000, 0.000, -6.30 mm

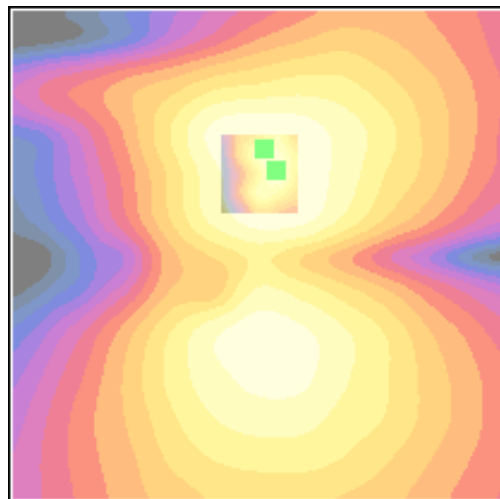
Cursor:

ABM1/ABM2 = 44.2 dB

ABM1 comp = -9.41 dB A/m

BWC Factor = 0.157003 dB

Location: -1.8, -8.7, 3.7 mm



0 dB = 153.8

Applicant	Kyocera
FCC ID:	V65C5120
Report #:	CT-C5120-13C-0611-R0

Test Laboratory: COMPTEST/KYOCERA

Date: 6/15/2011

FCC_C5120_TCoil_PCS_Open_Ch. 600 z(axial)

Communication System: CDMA-1900, Frequency: 1880 MHz, Duty Cycle: 1:1

Medium: T-Coil, Medium parameters used: $\sigma = 0$ mho/m, $\epsilon_r = 1$; $\rho = 0$ kg/m³

Phantom: HAC Test Arch with AMCC, Phantom section: TCoil Section

DASY4 Configuration:

Probe: AM1DV2 - 1045, , Calibrated: 9/6/2010

Sensor-Surface: 0mm (Fix Surface),

Electronics: DAE4 Sn527, Calibrated: 7/8/2010

Measurement SW: DASY4, V4.7 Build 80

Postprocessing SW: SEMCAD, V1.8 Build 186

Temperature:

Room T = 21.8̄ 1 deg C, Liquid T = 22.0̄ 1 deg C

General Scans_600/z (axial) 4.2mm 50 x 50/ABM Interpolated SNR(x,y,z) (121x121x1):

Measurement grid: dx=10mm, dy=10mm

Signal Type: Audio File (.wav) 48k_voice_1kHz_1s.wav

BWC applied: 0.155979 dB

Device Reference Point: 0.000, 0.000, -6.30 mm

Cursor:

ABM1/ABM2 = 53.1 dB

ABM1 comp = 0.434 dB A/m

BWC Factor = 0.155979 dB

Location: 2.5, 0, 3.7 mm

General Scans_600/z (axial) fine 2mm 8 x 8/ABM Interpolated SNR(x,y,z) (41x41x1):

Measurement grid: dx=10mm, dy=10mm

Signal Type: Audio File (.wav) 48k_voice_1kHz_1s.wav

BWC applied: 0.155979 dB

Device Reference Point: 0.000, 0.000, -6.30 mm

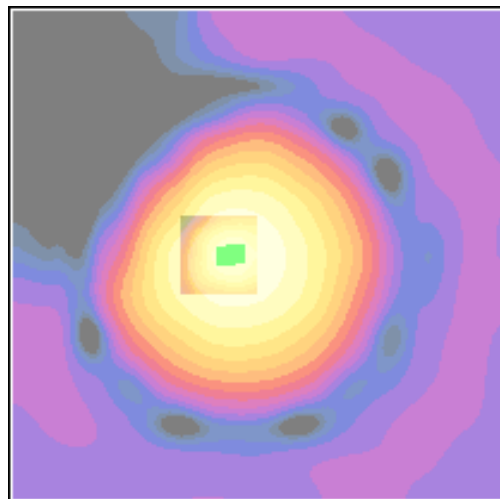
Cursor:

ABM1/ABM2 = 53.7 dB

ABM1 comp = 0.999 dB A/m

BWC Factor = 0.155979 dB

Location: 3.4, 0.2, 3.7 mm



0 dB = 452.9

Applicant	Kyocera
FCC ID:	V65C5120
Report #:	CT-C5120-13C-0611-R0

Test Laboratory: COMPTEST/KYOCERA

Date: 6/15/2011

FCC_C5120_TCoil_PCS_Open_Ch. 600 x(longitudinal)

Communication System: CDMA-1900, Frequency: 1880 MHz, Duty Cycle: 1:1

Medium: T-Coil, Medium parameters used: $\sigma = 0$ mho/m, $\epsilon_r = 1$; $\rho = 0$ kg/m³

Phantom: HAC Test Arch with AMCC, Phantom section: TCoil Section

DASY4 Configuration:

Probe: AM1DV2 - 1045, , Calibrated: 9/6/2010

Sensor-Surface: 0mm (Fix Surface),

Electronics: DAE4 Sn527, Calibrated: 7/8/2010

Measurement SW: DASY4, V4.7 Build 80

Postprocessing SW: SEMCAD, V1.8 Build 186

Temperature:

Room T = 21.8̄ 1 deg C, Liquid T = 22.0̄ 1 deg C

General Scans_600/x (longitudinal) 4.2mm 50 x 50/ABM Interpolated SNR(x,y,z) (121x121x1):

Measurement grid: dx=10mm, dy=10mm

Signal Type: Audio File (.wav) 48k_voice_1kHz_1s.wav

BWC applied: 0.155979 dB

Device Reference Point: 0.000, 0.000, -6.30 mm

Cursor:

ABM1/ABM2 = 43.2 dB

ABM1 comp = -8.96 dB A/m

BWC Factor = 0.155979 dB

Location: -7.5, 3.3, 3.7 mm

General Scans_600/x (longitudinal) fine 2mm 8 x 8/ABM Interpolated SNR(x,y,z) (41x41x1):

Measurement grid: dx=10mm, dy=10mm

Signal Type: Audio File (.wav) 48k_voice_1kHz_1s.wav

BWC applied: 0.155979 dB

Device Reference Point: 0.000, 0.000, -6.30 mm

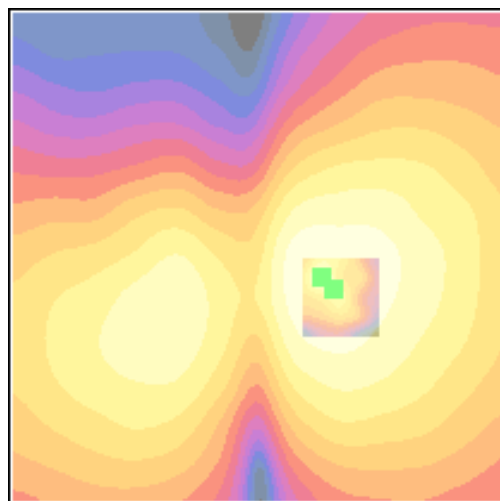
Cursor:

ABM1/ABM2 = 43.7 dB

ABM1 comp = -7.50 dB A/m

BWC Factor = 0.155979 dB

Location: -6.3, 2.2, 3.7 mm



0 dB = 145.1

Applicant	Kyocera
FCC ID:	V65C5120
Report #:	CT-C5120-13C-0611-R0

Test Laboratory: COMPTEST/KYOCERA

Date: 6/15/2011

FCC_C5120_TCoil_PCS_Open_Ch. 600 y(transveral)

Communication System: CDMA-1900, Frequency: 1880 MHz, Duty Cycle: 1:1

Medium: T-Coil, Medium parameters used: $\sigma = 0$ mho/m, $\epsilon_r = 1$; $\rho = 0$ kg/m³

Phantom: HAC Test Arch with AMCC, Phantom section: TCoil Section

DASY4 Configuration:

Probe: AM1DV2 - 1045, , Calibrated: 9/6/2010

Sensor-Surface: 0mm (Fix Surface),

Electronics: DAE4 Sn527, Calibrated: 7/8/2010

Measurement SW: DASY4, V4.7 Build 80

Postprocessing SW: SEMCAD, V1.8 Build 186

Temperature:

Room T = 21.8̄ 1 deg C, Liquid T = 22.0̄ 1 deg C

General Scans_600/y (transveral) 4.2mm 50 x 50/ABM Interpolated SNR(x,y,z) (121x121x1):

Measurement grid: dx=10mm, dy=10mm

Signal Type: Audio File (.wav) 48k_voice_1kHz_1s.wav

BWC applied: 0.155979 dB

Device Reference Point: 0.000, 0.000, -6.30 mm

Cursor:

ABM1/ABM2 = 44.0 dB

ABM1 comp = -9.90 dB A/m

BWC Factor = 0.155979 dB

Location: -2.5, -8.8, 3.7 mm

General Scans_600/y (transveral) fine 2mm 8 x 8/ABM Interpolated SNR(x,y,z) (41x41x1):

Measurement grid: dx=10mm, dy=10mm

Signal Type: Audio File (.wav) 48k_voice_1kHz_1s.wav

BWC applied: 0.155979 dB

Device Reference Point: 0.000, 0.000, -6.30 mm

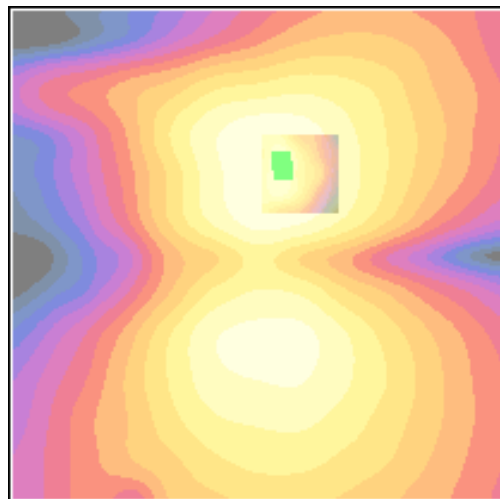
Cursor:

ABM1/ABM2 = 44.2 dB

ABM1 comp = -10.5 dB A/m

BWC Factor = 0.155979 dB

Location: -2.2, -9.7, 3.7 mm



0 dB = 159.3

Applicant	Kyocera
FCC ID:	V65C5120
Report #:	CT-C5120-13C-0611-R0

Test Laboratory: COMPTEST/KYOCERA

Date: 6/15/2011

FCC_C5120_TCoil_PCS_Open_Ch. 1175 z(axial)

Communication System: CDMA-1900, Frequency: 1908.75 MHz, Duty Cycle: 1:1

Medium: T-Coil, Medium parameters used: $\sigma = 0$ mho/m, $\epsilon_r = 1$; $\rho = 0$ kg/m³

Phantom: HAC Test Arch with AMCC, Phantom section: TCoil Section

DASY4 Configuration:

Probe: AM1DV2 - 1045, , Calibrated: 9/6/2010

Sensor-Surface: 0mm (Fix Surface),

Electronics: DAE4 Sn527, Calibrated: 7/8/2010

Measurement SW: DASY4, V4.7 Build 80

Postprocessing SW: SEMCAD, V1.8 Build 186

Temperature:

Room T = 21.8̄ 1 deg C, Liquid T = 22.0̄ 1 deg C

General Scans_1175/z (axial) 4.2mm 50 x 50/ABM Interpolated SNR(x,y,z) (121x121x1):

Measurement grid: dx=10mm, dy=10mm

Signal Type: Audio File (.wav) 48k_voice_1kHz_1s.wav

BWC applied: 0.155979 dB

Device Reference Point: 0.000, 0.000, -6.30 mm

Cursor:

ABM1/ABM2 = 53.2 dB

ABM1 comp = 0.722 dB A/m

BWC Factor = 0.155979 dB

Location: 1.7, 0.4, 3.7 mm

General Scans_1175/z (axial) fine 2mm 8 x 8/ABM Interpolated SNR(x,y,z) (41x41x1):

Measurement grid: dx=10mm, dy=10mm

Signal Type: Audio File (.wav) 48k_voice_1kHz_1s.wav

BWC applied: 0.155979 dB

Device Reference Point: 0.000, 0.000, -6.30 mm

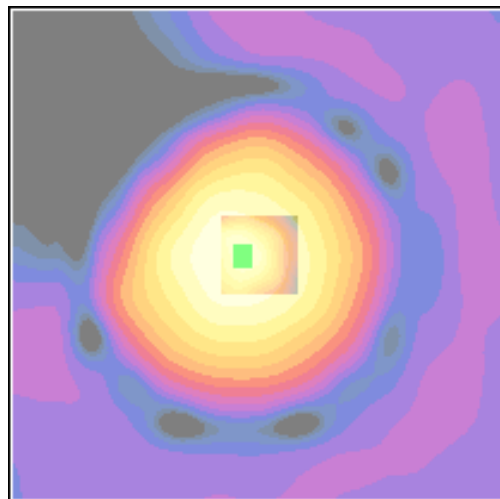
Cursor:

ABM1/ABM2 = 53.6 dB

ABM1 comp = 1.34 dB A/m

BWC Factor = 0.155979 dB

Location: 1.6, 0, 3.7 mm



0 dB = 459.6

Applicant	Kyocera
FCC ID:	V65C5120
Report #:	CT-C5120-13C-0611-R0

Test Laboratory: COMPTEST/KYOCERA

Date: 6/15/2011

FCC_C5120_TCoil_PCS_Open_Ch. 1175 x(longitudinal)

Communication System: CDMA-1900, Frequency: 1908.75 MHz, Duty Cycle: 1:1

Medium: T-Coil, Medium parameters used: $\sigma = 0$ mho/m, $\epsilon_r = 1$; $\rho = 0$ kg/m³

Phantom: HAC Test Arch with AMCC, Phantom section: TCoil Section

DASY4 Configuration:

Probe: AM1DV2 - 1045, , Calibrated: 9/6/2010

Sensor-Surface: 0mm (Fix Surface),

Electronics: DAE4 Sn527, Calibrated: 7/8/2010

Measurement SW: DASY4, V4.7 Build 80

Postprocessing SW: SEMCAD, V1.8 Build 186

Temperature:

Room T = 21.8̄ 1 deg C, Liquid T = 22.0̄ 1 deg C

General Scans_1175/x (longitudinal) 4.2mm 50 x 50/ABM Interpolated SNR(x,y,z) (121x121x1):

Measurement grid: dx=10mm, dy=10mm

Signal Type: Audio File (.wav) 48k_voice_1kHz_1s.wav

BWC applied: 0.155979 dB

Device Reference Point: 0.000, 0.000, -6.30 mm

Cursor:

ABM1/ABM2 = 43.2 dB

ABM1 comp = -8.54 dB A/m

BWC Factor = 0.155979 dB

Location: -7.1, 2.5, 3.7 mm

General Scans_1175/x (longitudinal) fine 2mm 8 x 8/ABM Interpolated SNR(x,y,z) (41x41x1):

Measurement grid: dx=10mm, dy=10mm

Signal Type: Audio File (.wav) 48k_voice_1kHz_1s.wav

BWC applied: 0.155979 dB

Device Reference Point: 0.000, 0.000, -6.30 mm

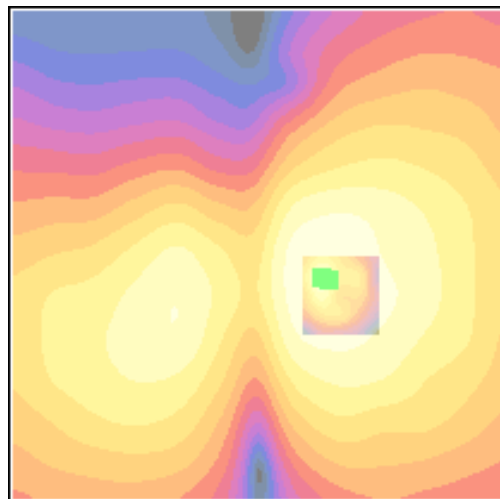
Cursor:

ABM1/ABM2 = 43.9 dB

ABM1 comp = -7.50 dB A/m

BWC Factor = 0.155979 dB

Location: -6.3, 2.4, 3.7 mm



0 dB = 144.8

Applicant	Kyocera
FCC ID:	V65C5120
Report #:	CT-C5120-13C-0611-R0

Test Laboratory: COMPTEST/KYOCERA

Date: 6/15/2011

FCC_C5120_TCoil_PCS_Open_Ch. 1175 y(transveral)

Communication System: CDMA-1900, Frequency: 1908.75 MHz, Duty Cycle: 1:1

Medium: T-Coil, Medium parameters used: $\sigma = 0$ mho/m, $\epsilon_r = 1$; $\rho = 0$ kg/m³

Phantom: HAC Test Arch with AMCC, Phantom section: TCoil Section

DASY4 Configuration:

Probe: AM1DV2 - 1045, , Calibrated: 9/6/2010

Sensor-Surface: 0mm (Fix Surface),

Electronics: DAE4 Sn527, Calibrated: 7/8/2010

Measurement SW: DASY4, V4.7 Build 80

Postprocessing SW: SEMCAD, V1.8 Build 186

Temperature:

Room T = 21.8̄ 1 deg C, Liquid T = 22.0̄ 1 deg C

General Scans_1175/y (transversal) 4.2mm 50 x 50/ABM Interpolated SNR(x,y,z) (121x121x1):

Measurement grid: dx=10mm, dy=10mm

Signal Type: Audio File (.wav) 48k_voice_1kHz_1s.wav

BWC applied: 0.155979 dB

Device Reference Point: 0.000, 0.000, -6.30 mm

Cursor:

ABM1/ABM2 = 44.2 dB

ABM1 comp = -9.96 dB A/m

BWC Factor = 0.155979 dB

Location: -1.7, -10, 3.7 mm

General Scans_1175/y (transversal) fine 2mm 8 x 8/ABM Interpolated SNR(x,y,z) (41x41x1):

Measurement grid: dx=10mm, dy=10mm

Signal Type: Audio File (.wav) 48k_voice_1kHz_1s.wav

BWC applied: 0.155979 dB

Device Reference Point: 0.000, 0.000, -6.30 mm

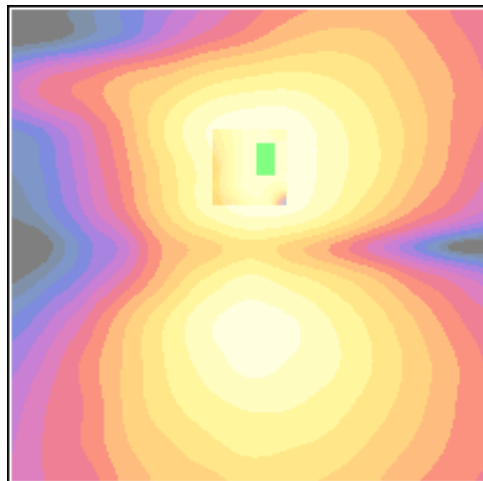
Cursor:

ABM1/ABM2 = 44.2 dB

ABM1 comp = -9.22 dB A/m

BWC Factor = 0.155979 dB

Location: -1.8, -8.5, 3.7 mm



0 dB = 162.6