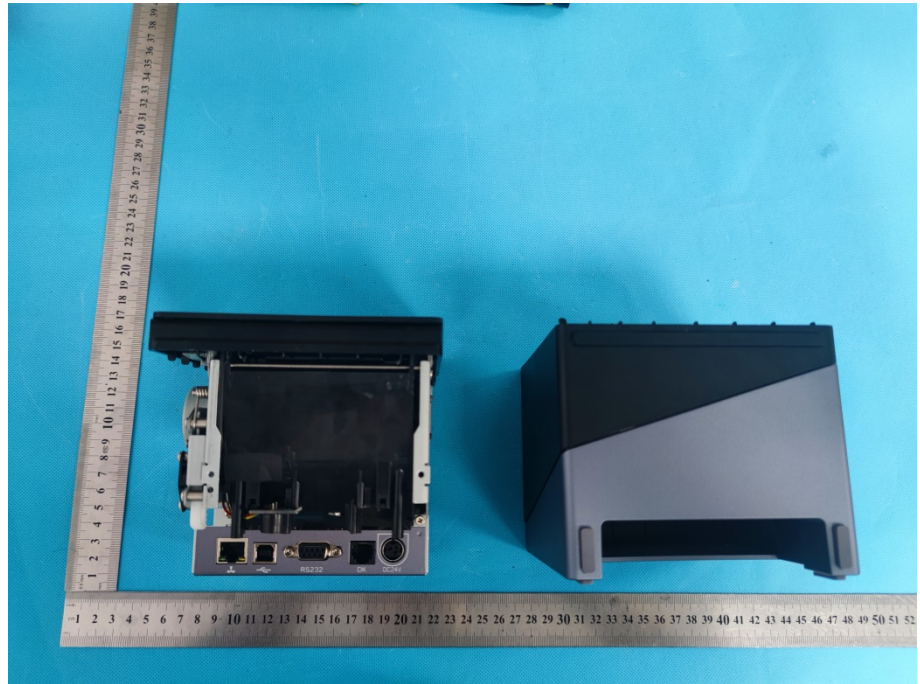
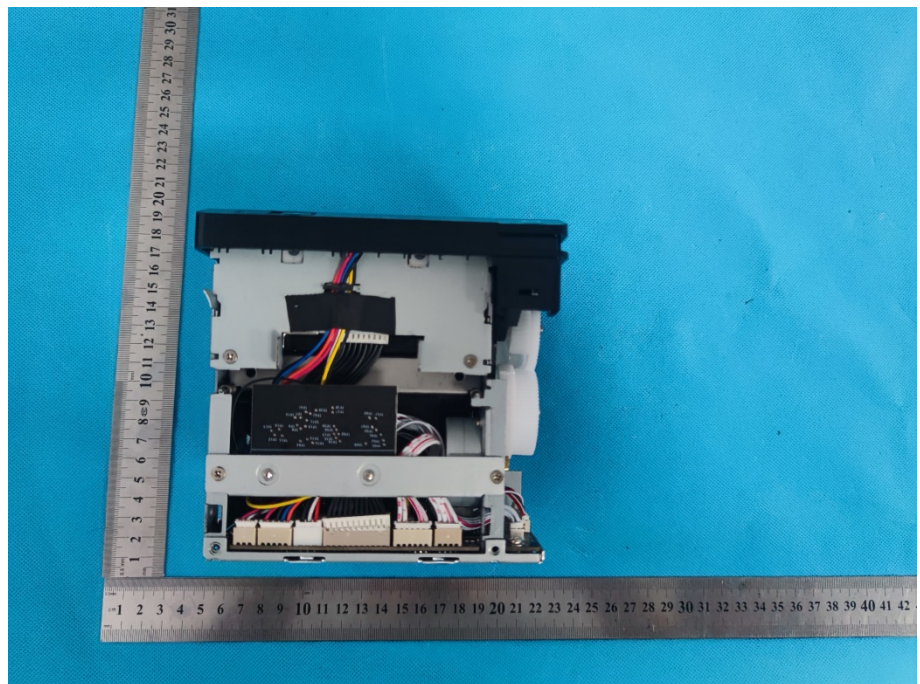


EXHIBIT 3 - EUT INTERNAL PHOTOGRAPHS

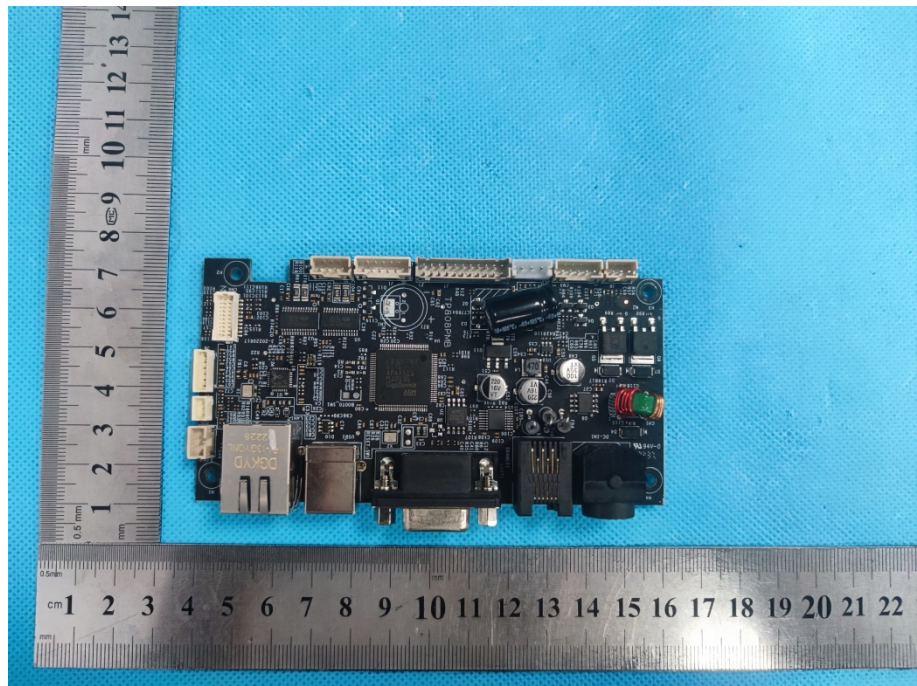
EUT Housing and Board View 1



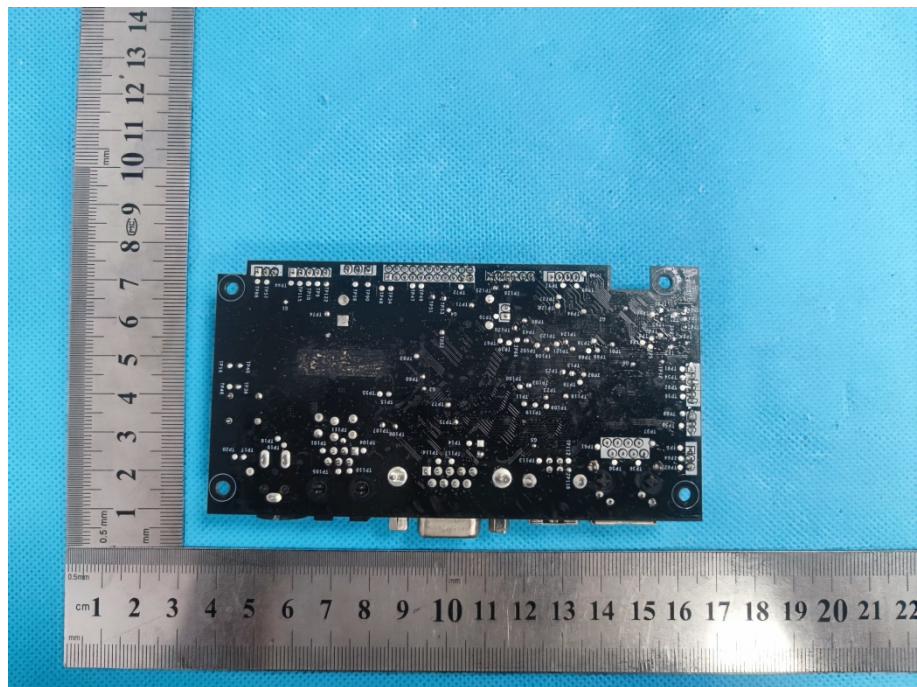
EUT Housing and Board View 2



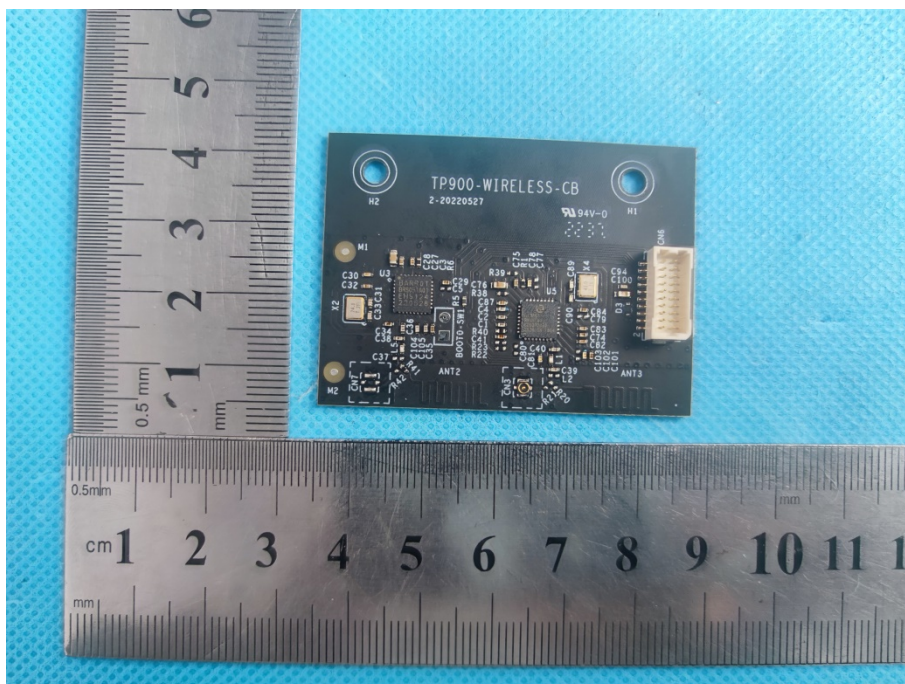
**Solder
Board-Component
View 1**



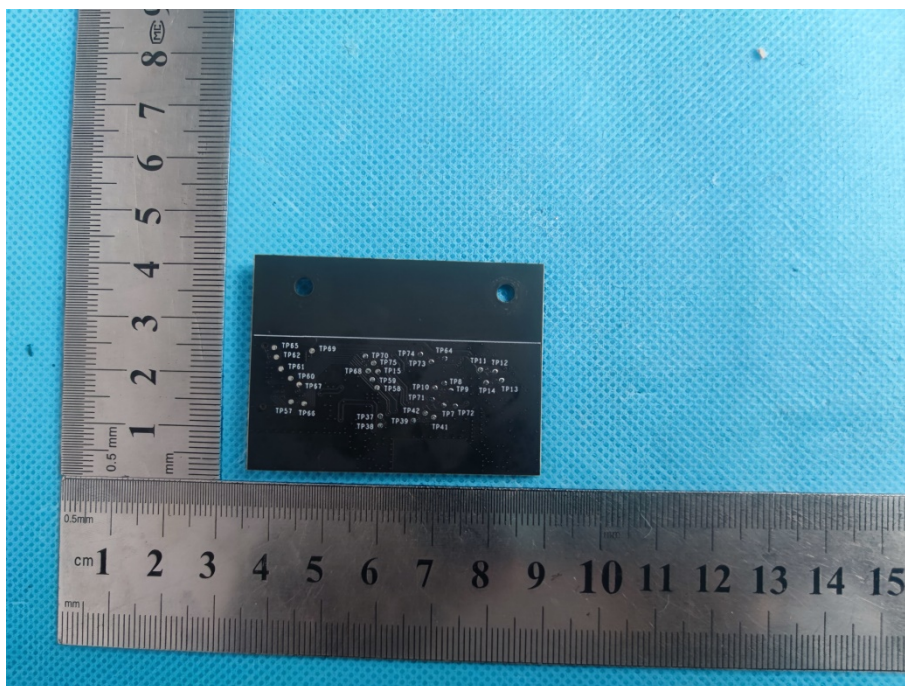
**Solder
Board-Component
View 2**

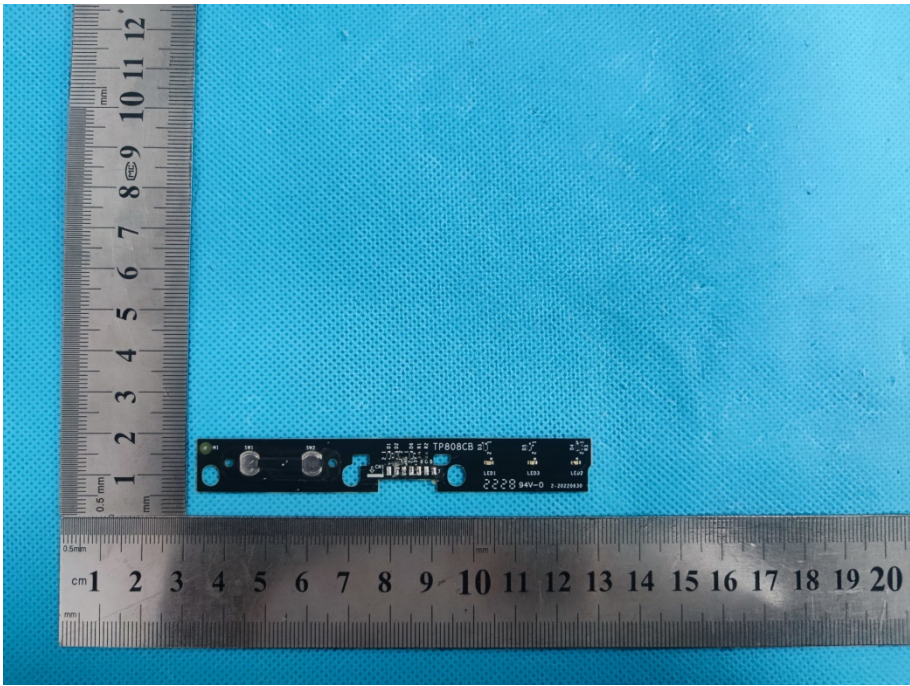
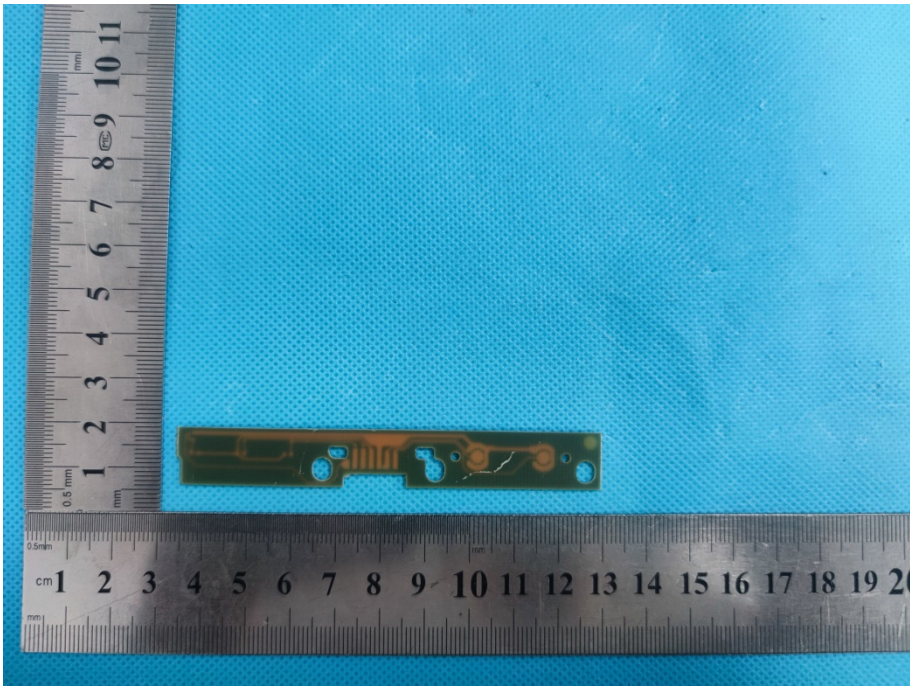


**Solder
Board-Component
View 3**

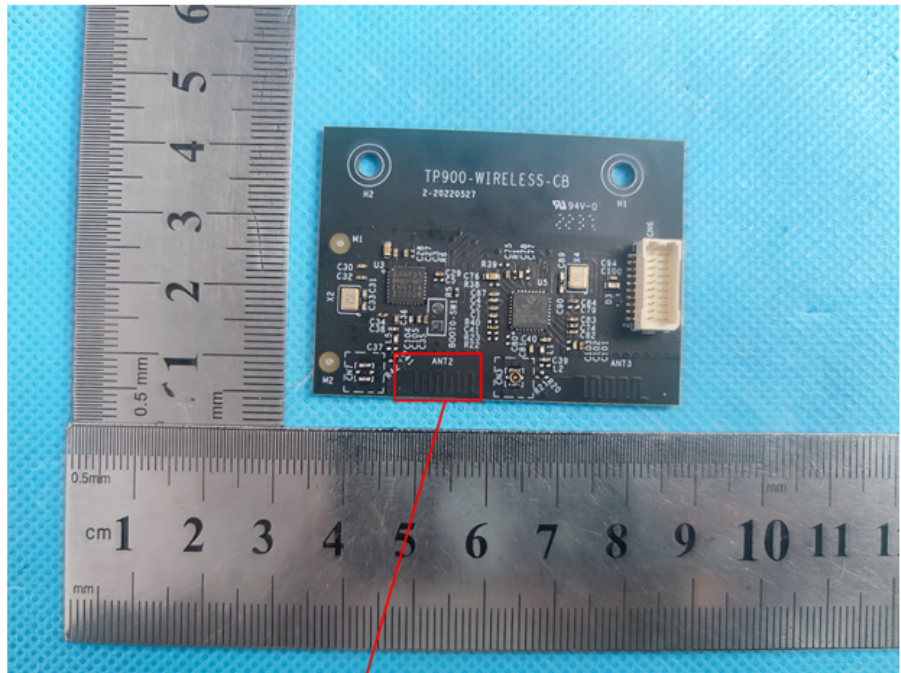


**Solder
Board-Component
View 4**



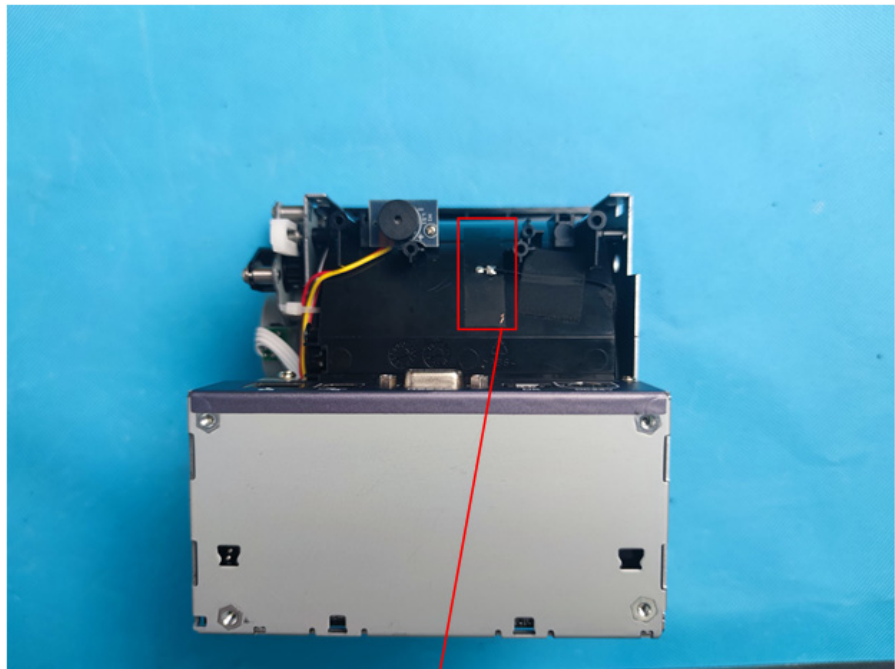
<p>Solder Board-Component View 5</p>	 A photograph of a small, rectangular printed circuit board (PCB) component, likely a solder mask, placed on a blue textured surface. The component is dark green with several circular solder pads and a central rectangular area. It is positioned between two metal rulers for scale. The vertical ruler on the left shows markings from 1 to 12 mm. The horizontal ruler at the bottom shows markings from 1 to 20 cm. The component is approximately 1.5 cm long and 0.5 cm wide.
<p>Solder Board-Component View 6</p>	 A photograph of the same PCB component as in View 5, but from a different perspective. The component is dark green with several circular solder pads and a central rectangular area. It is positioned between two metal rulers for scale. The vertical ruler on the left shows markings from 1 to 11 mm. The horizontal ruler at the bottom shows markings from 1 to 20 cm. The component is approximately 1.5 cm long and 0.5 cm wide.

Antenna View 1



BT Ant.

Antenna View 2



WIFI Ant.