

PAX Computer Technology(Shenzhen) Co., Ltd

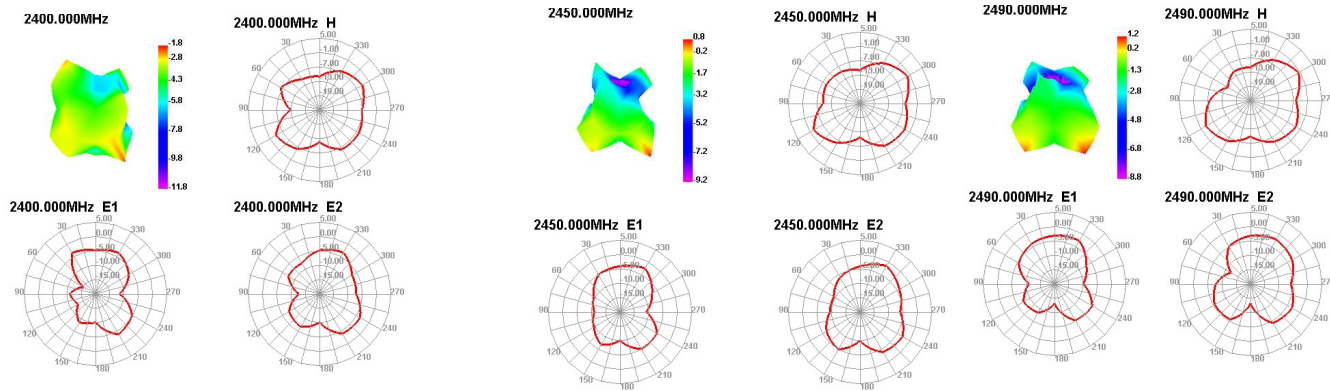
Project name	S920
Antenna manufacturer	Dongguan Yijia Electronics Communication Science&Technology Co.,Ltd.
Rf Engineer	Huang zhilin

Software information	Hardware information					
Software configuration	PCB version	Ant module firmware	Antenna version and matching description	Hardware configuration	Additional description	Conclusion
CG: APP: COMPID: BOOT:						
Software change point description						
Hardware change point description						
Test equipment description						

Passive radiation efficiency and maximum gain of antenna (dB)

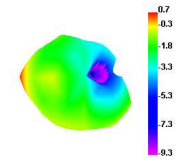
Frequency (MHz)	Radiation efficiency(Radiation efficiency)(dB)	Maximum gain(dBi)	Standard requirements	Access requirements	Conclusion	Remarks
2400	34.33	-4.73				
2410	34.53	-4.68				
2420	35.17	-4.53				
2430	36.57	-4.34				
2440	37.03	-4.31				
2450	37.59	-4.25				
2460	38.69	-4.12				
2470	38.13	-4.19				
2480	38.2	-4.18				
2490	39.06	-4.08				
Ave.all	36.93	-4.341				
5150	33.69	-4.73				
5200	38.82	-4.11				
5250	39.24	-4.06				
5300	40.85	-3.89				
5350	41.8	-3.79				
5400	42.48	-3.72				
5450	44.25	-3.54				
5500	47.12	-3.27				
5550	44.47	-3.52				
5600	43.82	-3.58				
5650	56.23	-2.5				
5700	53.79	-2.69				
5750	48.51	-3.14				
5800	40.16	-3.96				
5850	39.71	-4.01				
Ave.all	43.66333333	-3.634				
2400			>=40%	>=30%	PASS	
5500			>=40%	>=30%	PASS	

The 2.4G WiFi antenna pattern

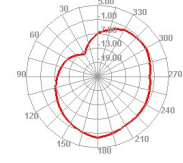


The 5G WIFI antenna pattern

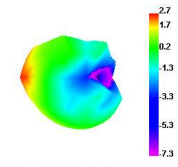
5150.000MHz



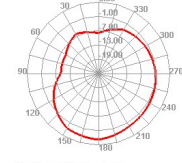
5150.000MHz H



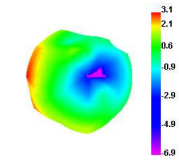
5500.000MHz



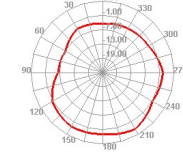
5500.000MHz H



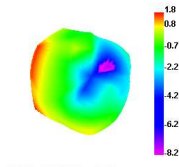
5750.000MHz



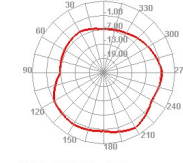
5750.000MHz H



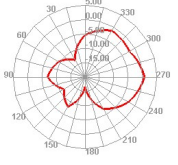
5850.000MHz



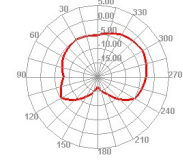
5850.000MHz H



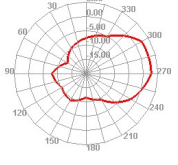
5150.000MHz E1



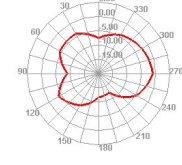
5150.000MHz E2



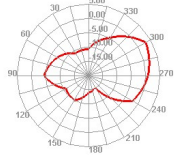
5500.000MHz E1



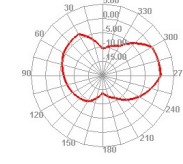
5500.000MHz E2



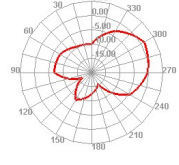
5750.000MHz E1



5750.000MHz E2



5850.000MHz E1



5850.000MHz E2

