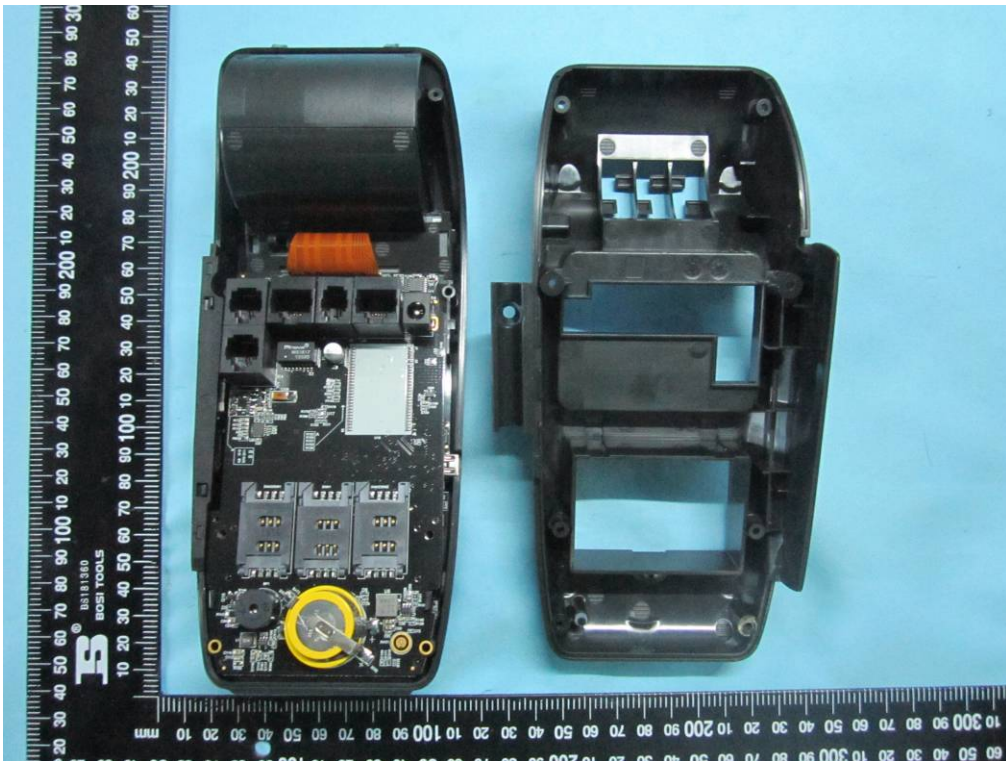
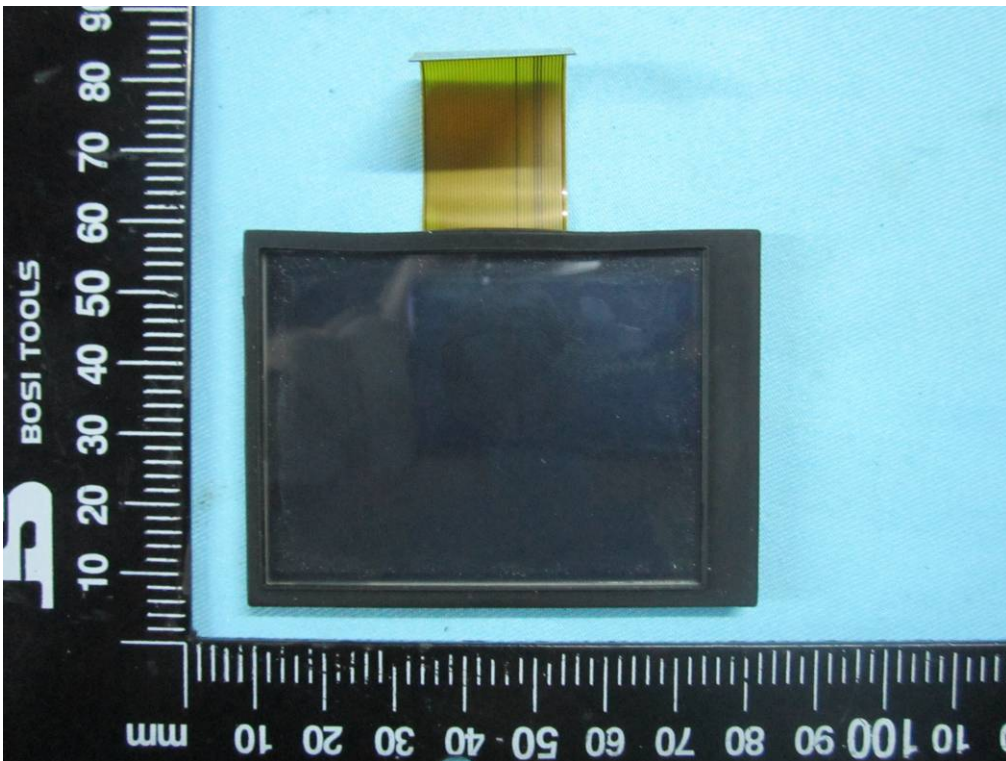


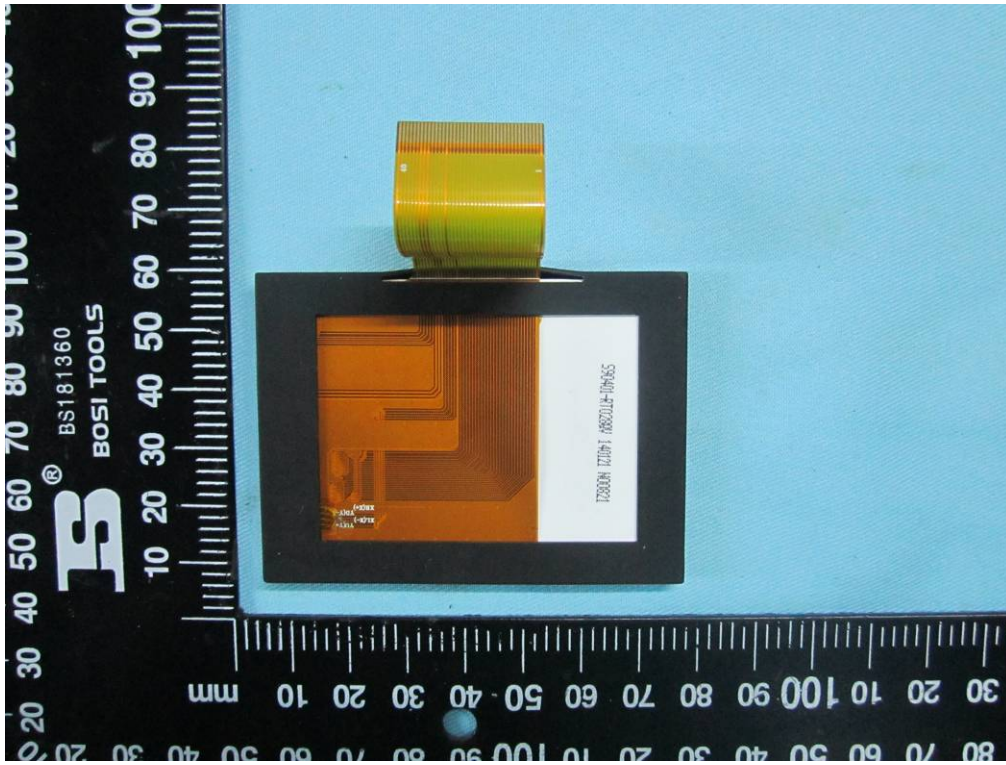
Annex B.ii. Photograph 2: EUT Internal Photo



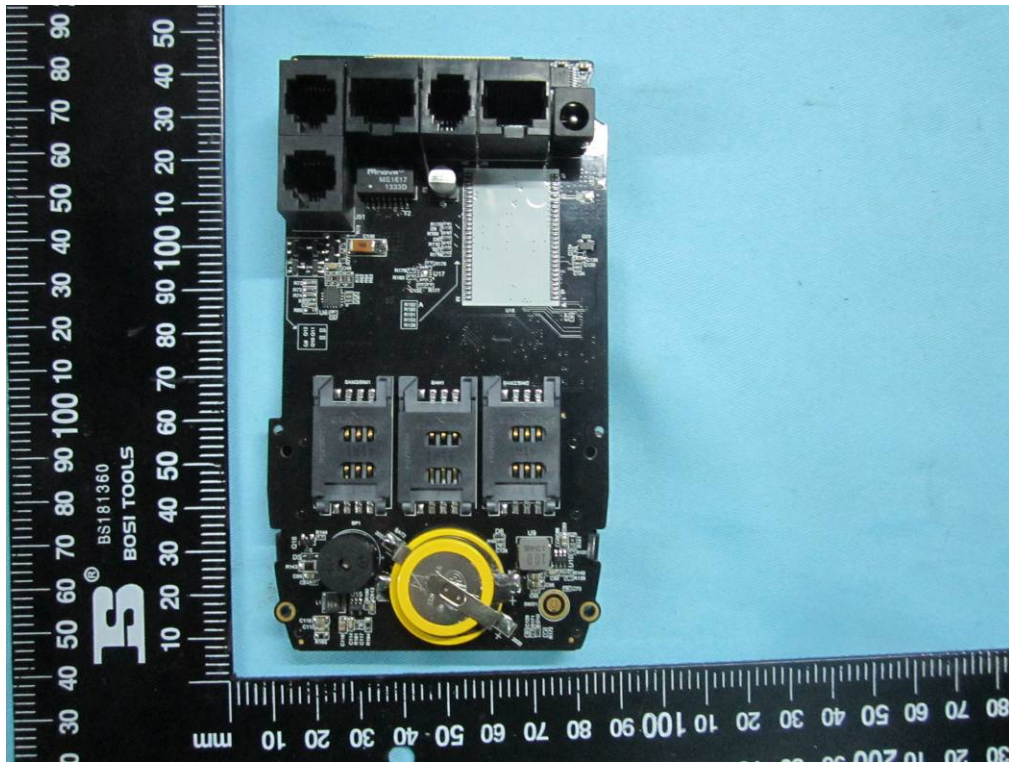
Cover Off - Top View



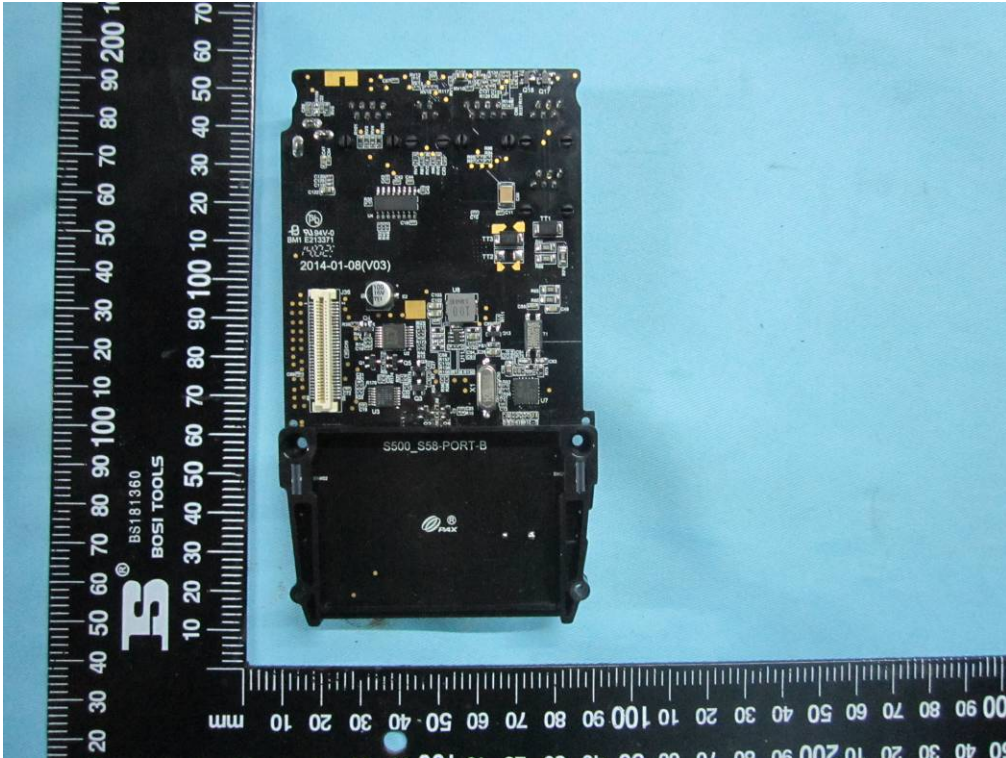
LED - Top View



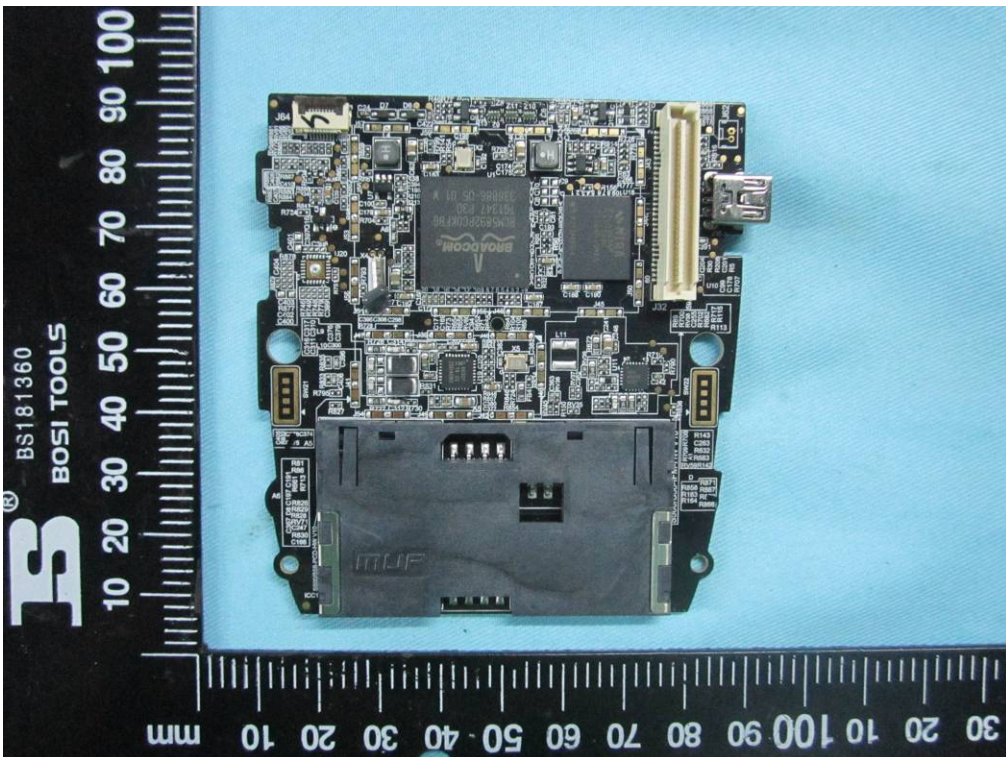
LED - Bottom View



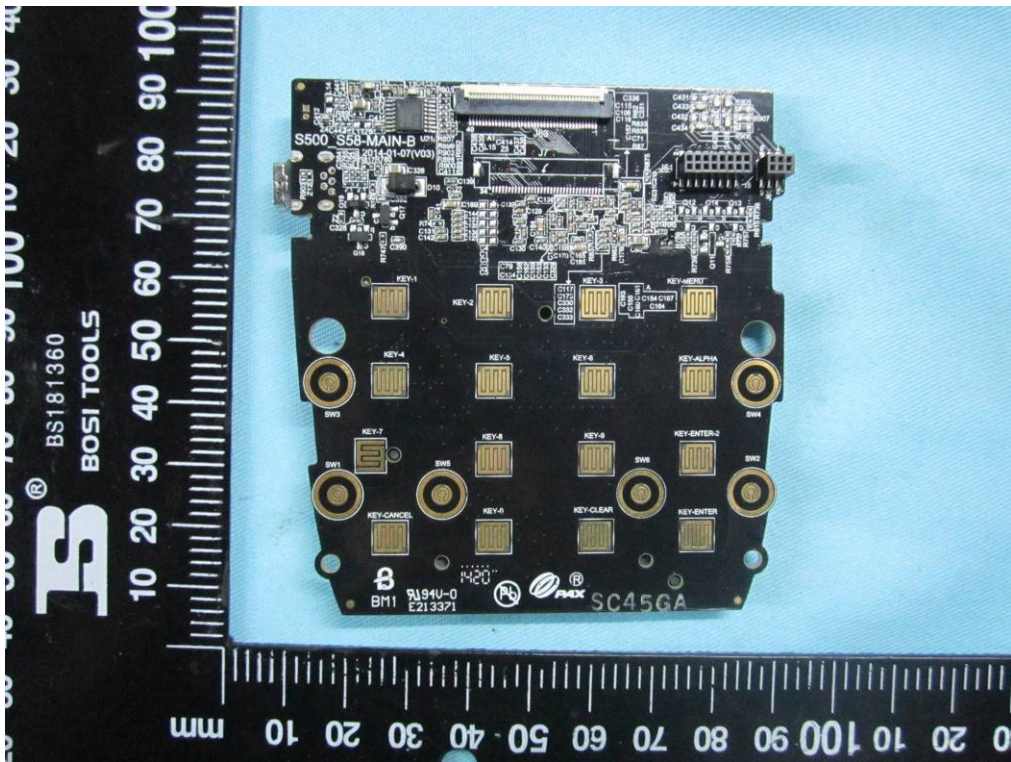
Mainboard - Front View



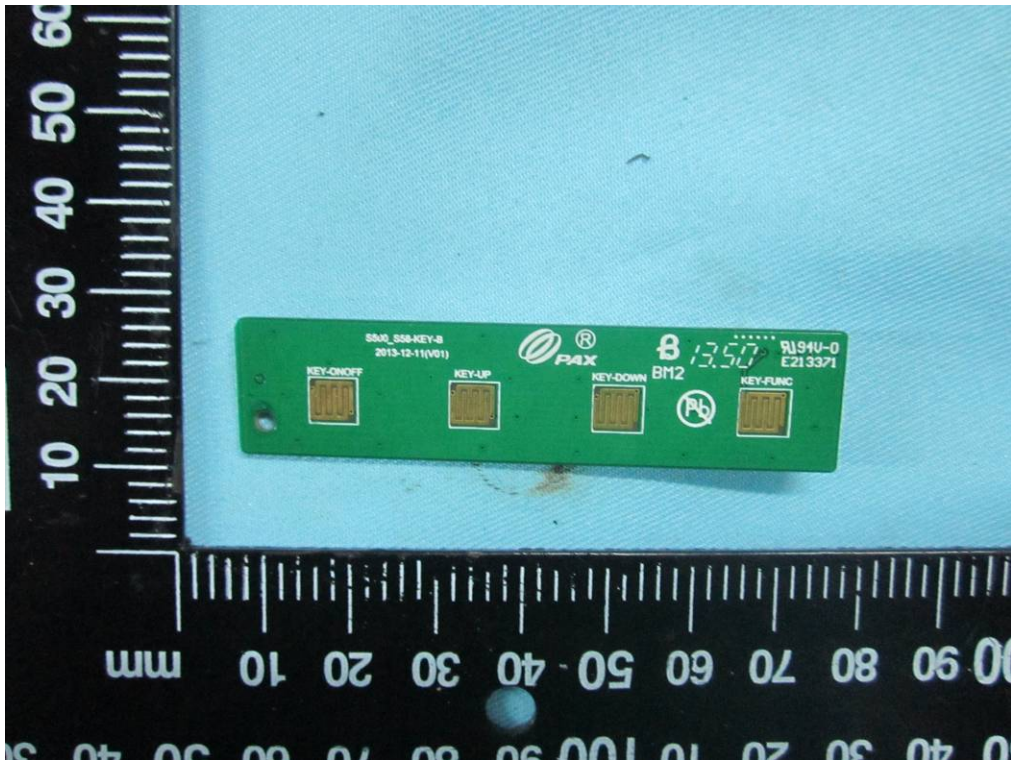
Mainborad - Rear View



Keyboard 1 - Front View



Keyboard 1 - Rear View



Keyboard 2 - Front View

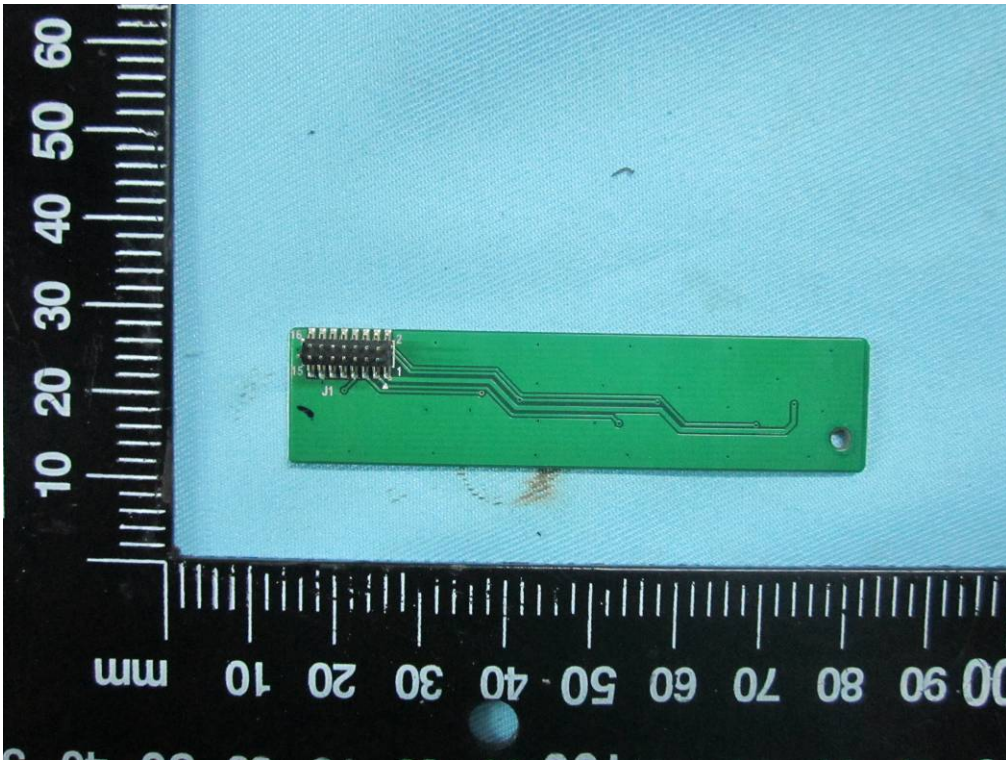


SIEMIC, INC.

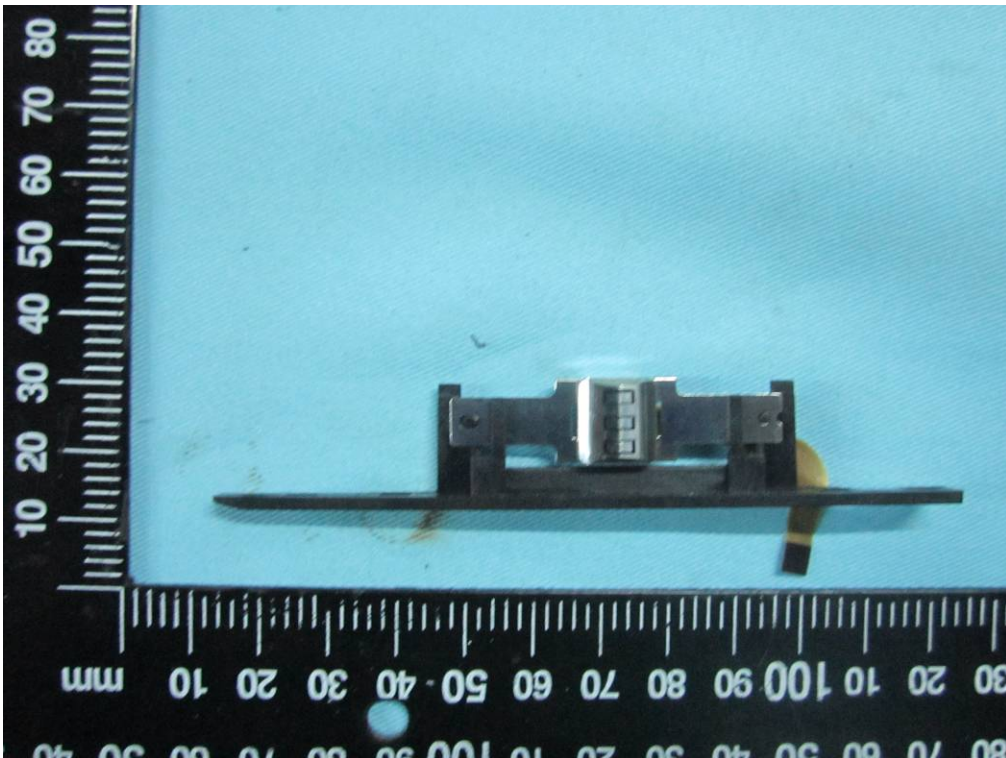
Accessing global markets

Title: EMC Test Report for EFT-POS Terminal
Main Model: S500
Serial Model: N/A
To: FCC Part 15 Subpart B Class B: 2013 , ANSI C63.4:2009

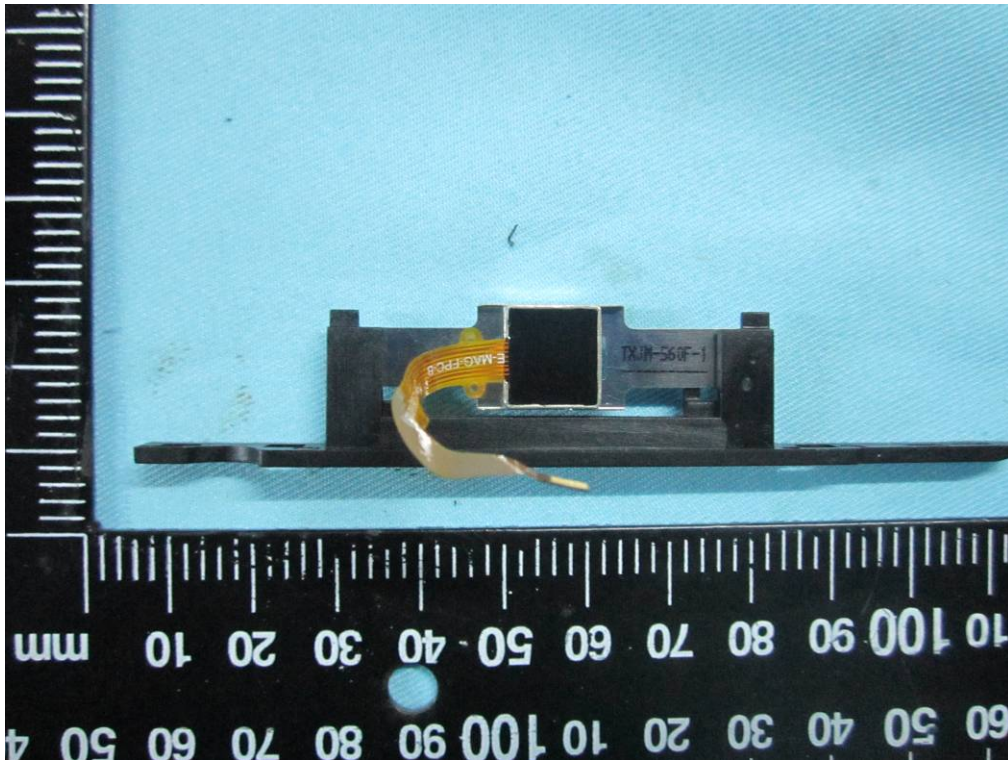
Report No.: 14070371-FCC-E1
Issue Date: August 06, 2014
Page: 40 of 50
www.siemic.com.cn



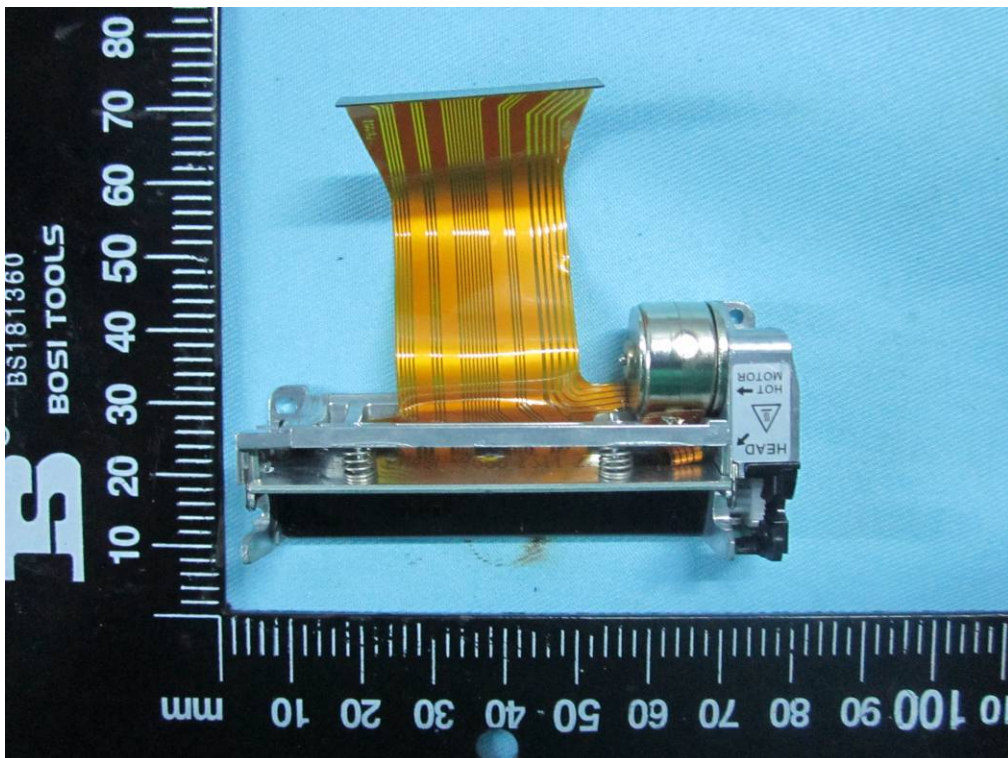
Keyboard 2 - Rear View



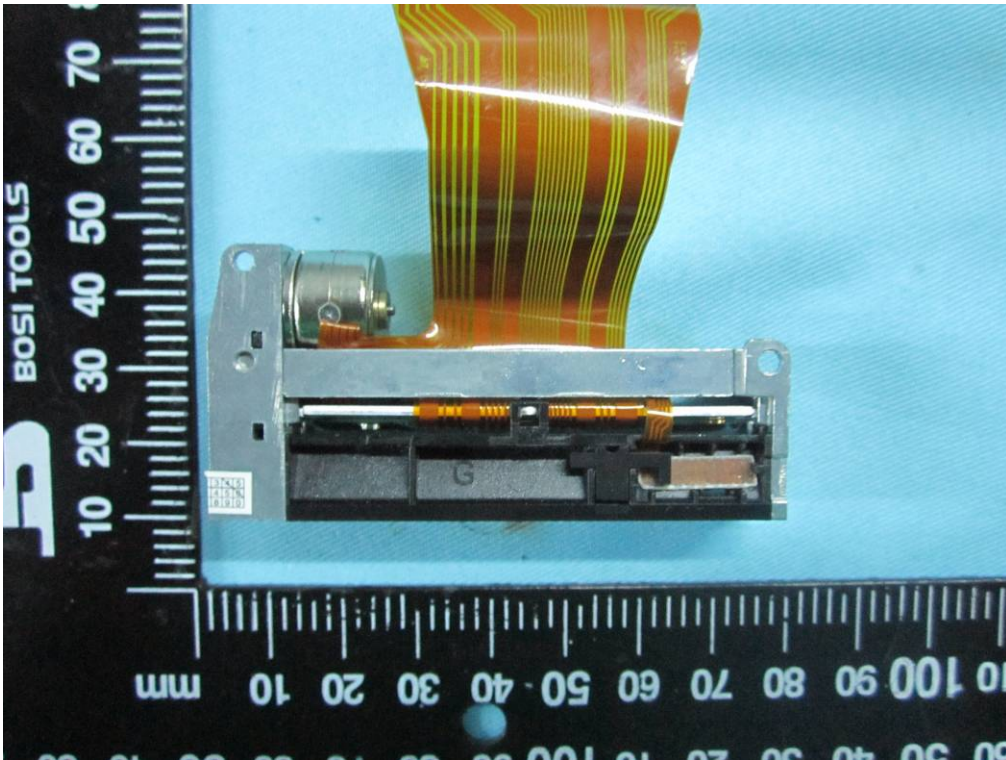
Magnetic Sensor - Front View



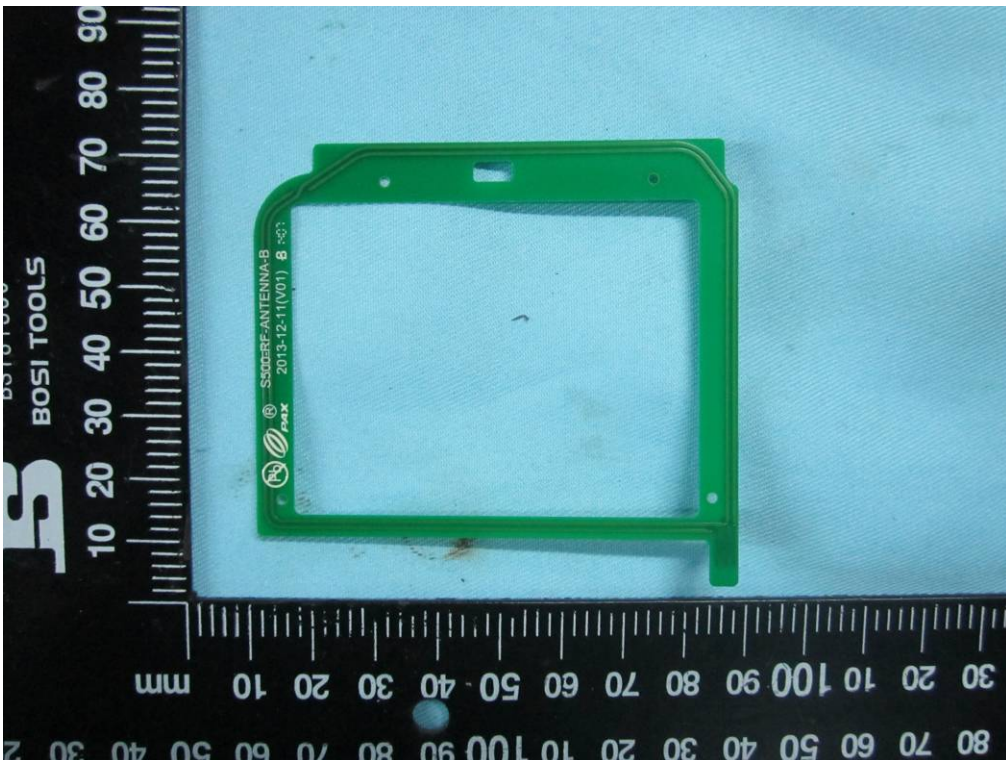
Magnetic Sensor - Rear View



Motor - Front View



Motor – Rear View



13.56MHz Antenna – View