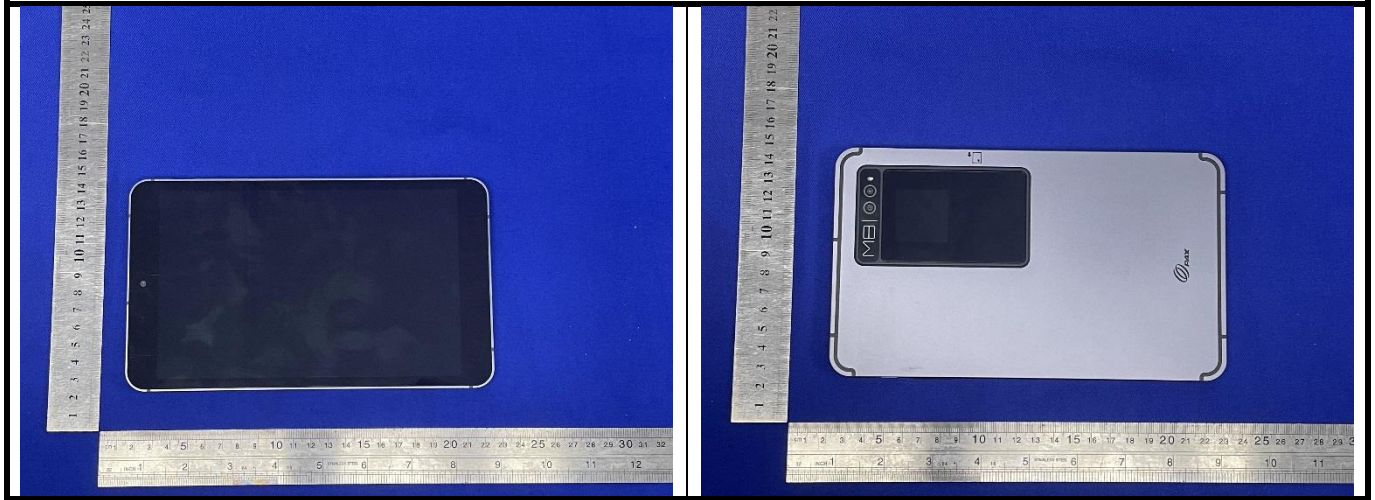
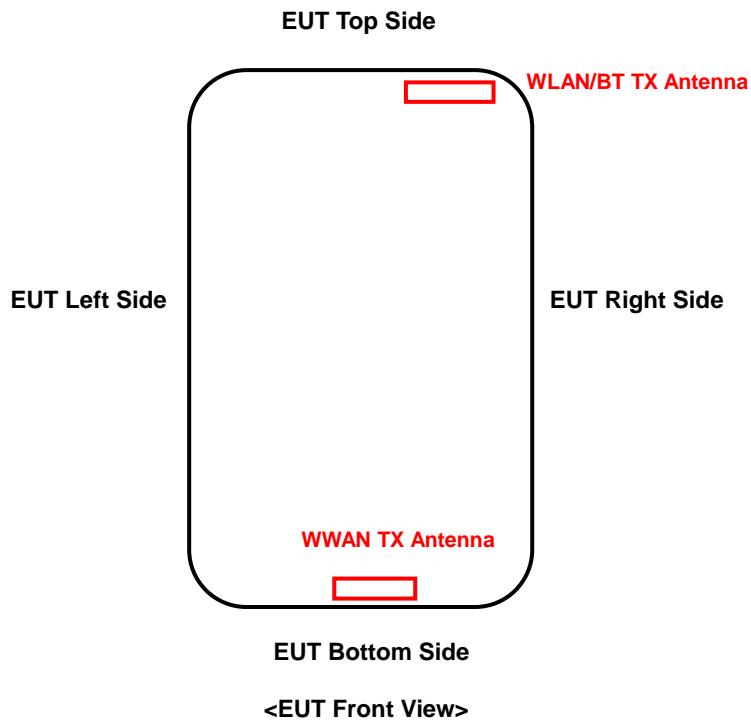


<Photographs of EUT>



<Antenna Location>



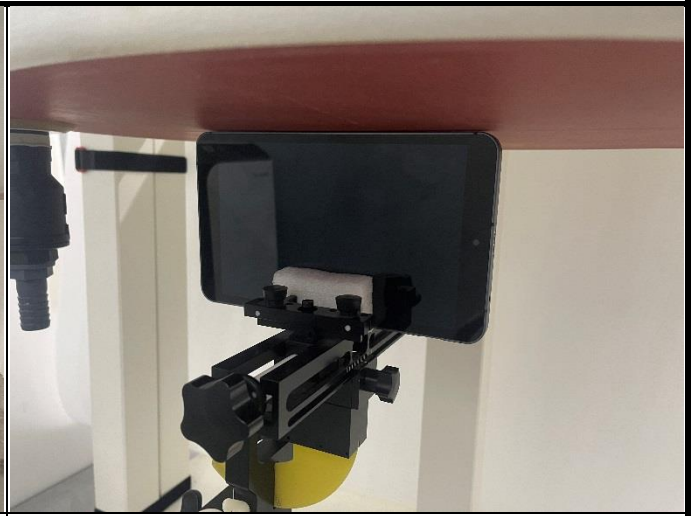
The separation distance for antenna to edge:

Antenna	Overall diagonal(mm)	Display diagonal(mm)	To Left Side (mm)	To Right Side (mm)	To Top Side (mm)	To Bottom Side (mm)
WWAN	235	204	59	51.1	205	5
WLAN / BT			90	12.5	5	205

<Photographs of SAR Setup>



Rear Face of EUT with 0 cm Gap



Left Side of EUT with 0 cm Gap



Right Side of EUT with 0 cm Gap



Top Side of EUT with 0 cm Gap



Bottom Side of EUT with 0 cm Gap