

Vendor Name: YiJia Electronic Communications Technology Co., Ltd.

Specification for Approval

Client Name: PAX Computer Technology(ShenZhen) Co.,LTD

Brand Name: YiJia

Part No: YJS01.086.001.303B

Part Description: WIFI Antenna


Manufacturer: YiJia Electronic

PAX Part Name: Antenna

PAX Materiel No.: 200212000000185

PAX Description: E700-AP6256-2.4G/5G -V01-BT&WIFI -FPC-一佳

PAX Import Reason: _____

Supplier Signature	Customer Signature
	Admit: Confirm:

Supplier Address: Yuanfu Industrial Park, No. 59, Muyu Road, Shatou Community,
Chang'an Town, Dongguan, Guangdong,

Supplier: WangSheng

Supplier Telephone and Fax: 0769-82586086 82586086

Date : 2022.08.04



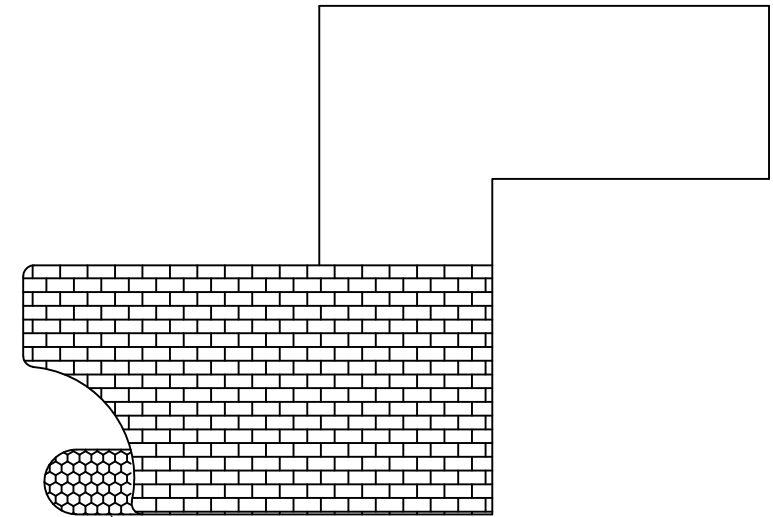
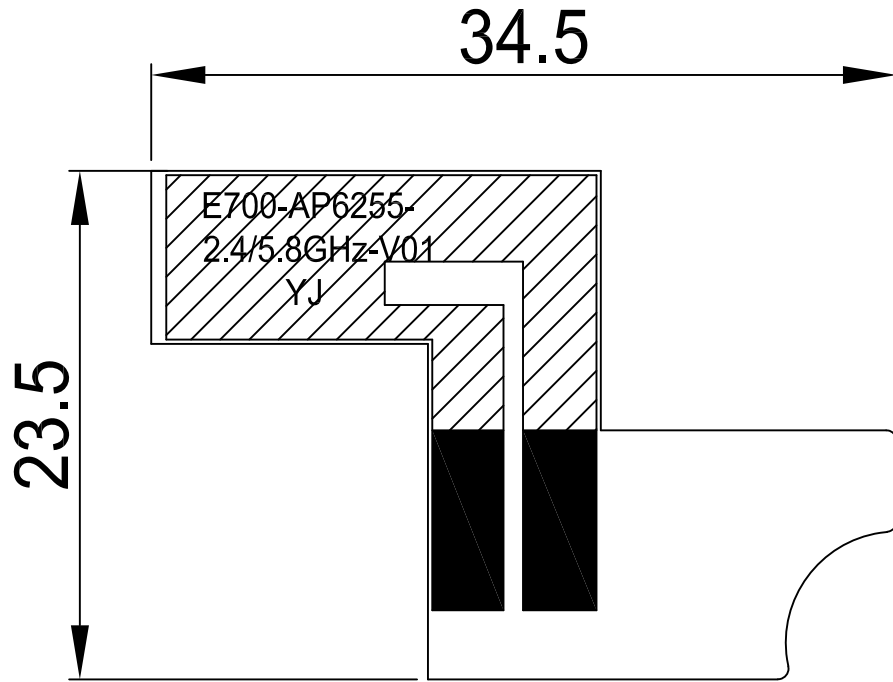
Specification Items List

NO	Contents	Number of Page	Page Code
1	Spec Cover	1	1
2	Specification Items List	1	2
3	Drawing	1	3
4	Package Drawing	1	4
5	Antenna Specification	1	5
6	S Parameter	1	6
7	Passive Test	3	7 ~ 9
8	Radiation Pattern	8	10 ~ 17
9	Active Test	2	18 ~ 19
10	Antenna Profile	3	20 ~ 22
11	N/A	N/A	N/A
12	-	-	-
13	-	-	-

RoHS
Compatible

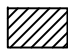
CUSTOMER	
PART NO	


REV.	DESCRIPTION	DATE
△	Initial issue	2019-05-06

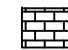


Including release paper 0.50

Easy to tear handle

 The wiring area


 Gold-plated area

 Reinforcement area (with glue)

Remarks:

1. Material: FPCB thickness: 0.1mm.
2. Color / surface treatment: gold plating of solder joint, 3M glue on the back without dividing line,
Color: black ink, white screen printing.
3. Size: the key size is with *.
4. Tolerance: the unmarked tolerance refers to the standard tolerance.

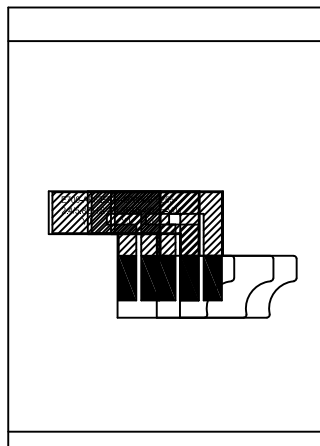
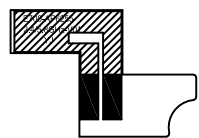
 佳 Dongguan YiJia Electronics Communication Technology Co.,Ltd. Tel :0769-85535057 Fax:0769-81664308

PART NAME: WiFi Antenna			
PART NO.: YJS01.086.001.303B		DATE: 2019-05-06	
APPROVED BY	CHECKED BY	DESIGNED BY	 Tolerance X.X ±0.50 X.XX±0.15 X° ±3°
Yin Tao	Wen Xue	Chen Xing Yi	
UNITS: mm SCALE: 1/1 REVISION: A			

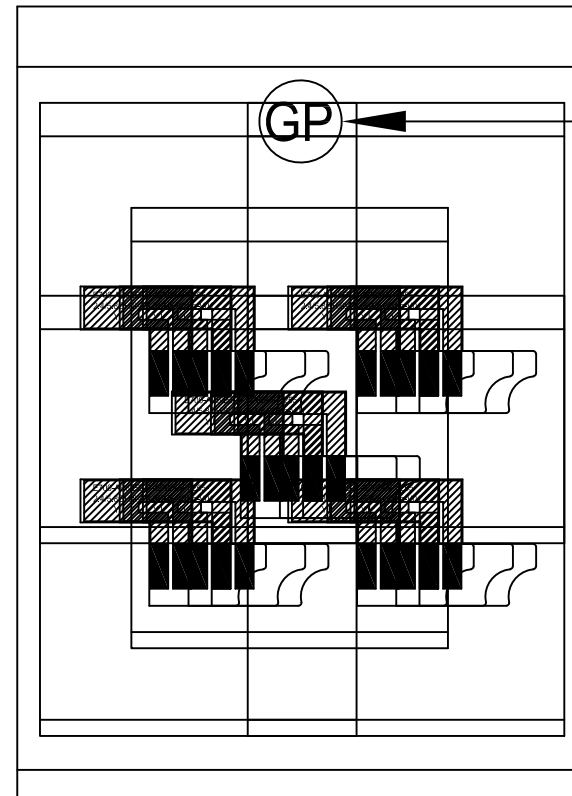
RoHS
Compatible

packing instruction

REV.	DESCRIPTION	DATE
△	Initial issue	2019-05-06

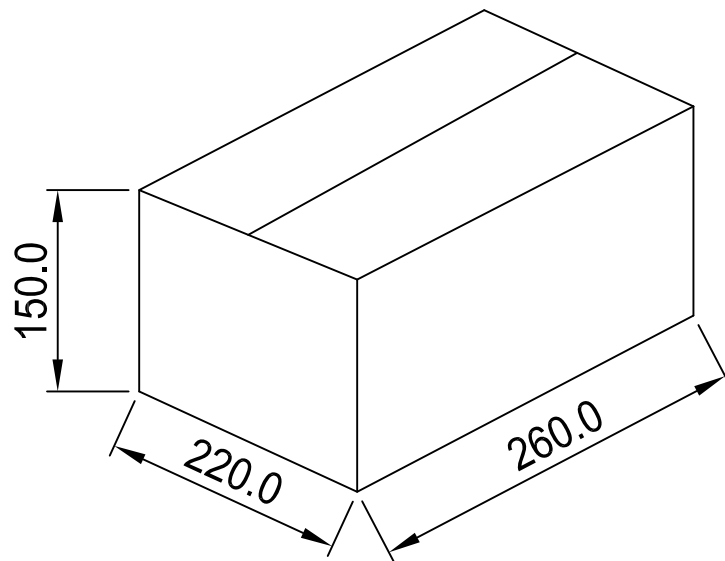


1. 200Pcs/1 small bag



GP标签

2. 1000 pcs 1 big bag



3. 10000PCS/Box



Dongguan YiJia Electronics Communication Technology Co.,Ltd. Tel:0769-85535057 Fax:0769-81664308

PART NAME: WiFi Antenna			
PART NO.: YJS01.086.001.303B			DATE: 2019-05-06
APPROVED BY	CHECKED BY	DESIGNED BY	 Tolerance X.X ±0.50 X.XX±0.15 X° ±3°
Yin Tao	Wen Xue	Chen Xing Yi	
UNITS: mm SCALE: 1/1 REVISION: A			

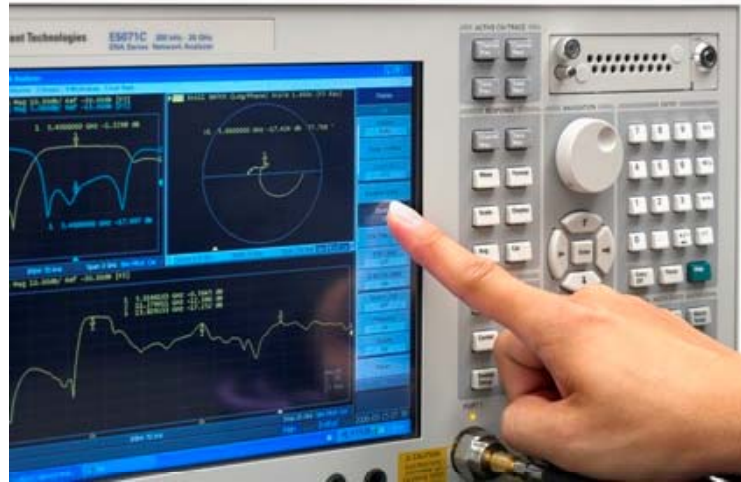


Antenna Specification

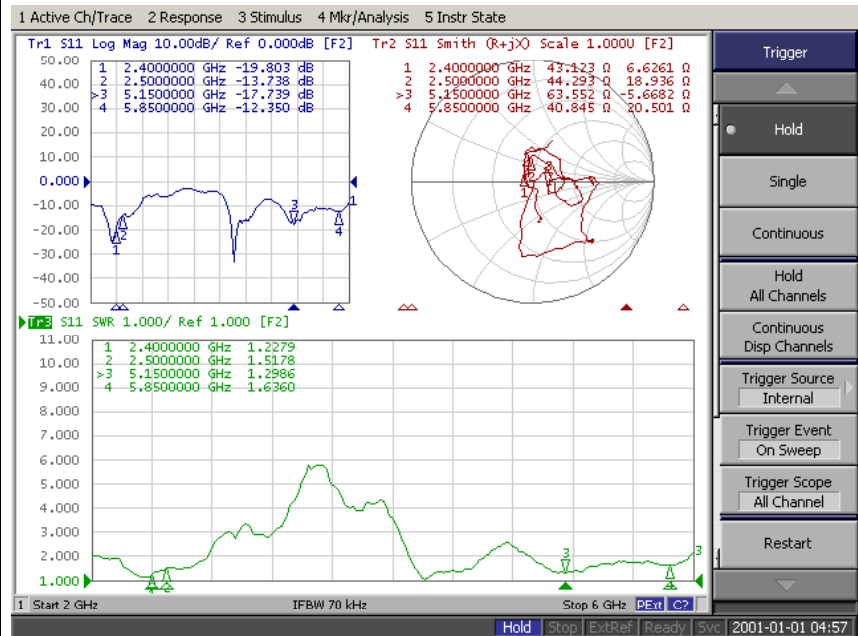
Electrical Properties	
Frequency	2.4-2.5GHz 5.15-5.85GHz
Impedance	50 Ohm Nominal
V.S.W.R	2.0 Max
Gain	1.0 dBi@2.4-2.5GHz 2.0 dBi@5.15-5.85GHz
Radiation	Omni-directional
Polarization	Linear
Physical Properties	
Connector	None
Cable Type	None
Cable Length	None
Cable Color	None
Operating Temp.	-40 ~ +85 °C
Storage Temp / Humidity	25 ± 5°C / <70%



Agilent E5071B

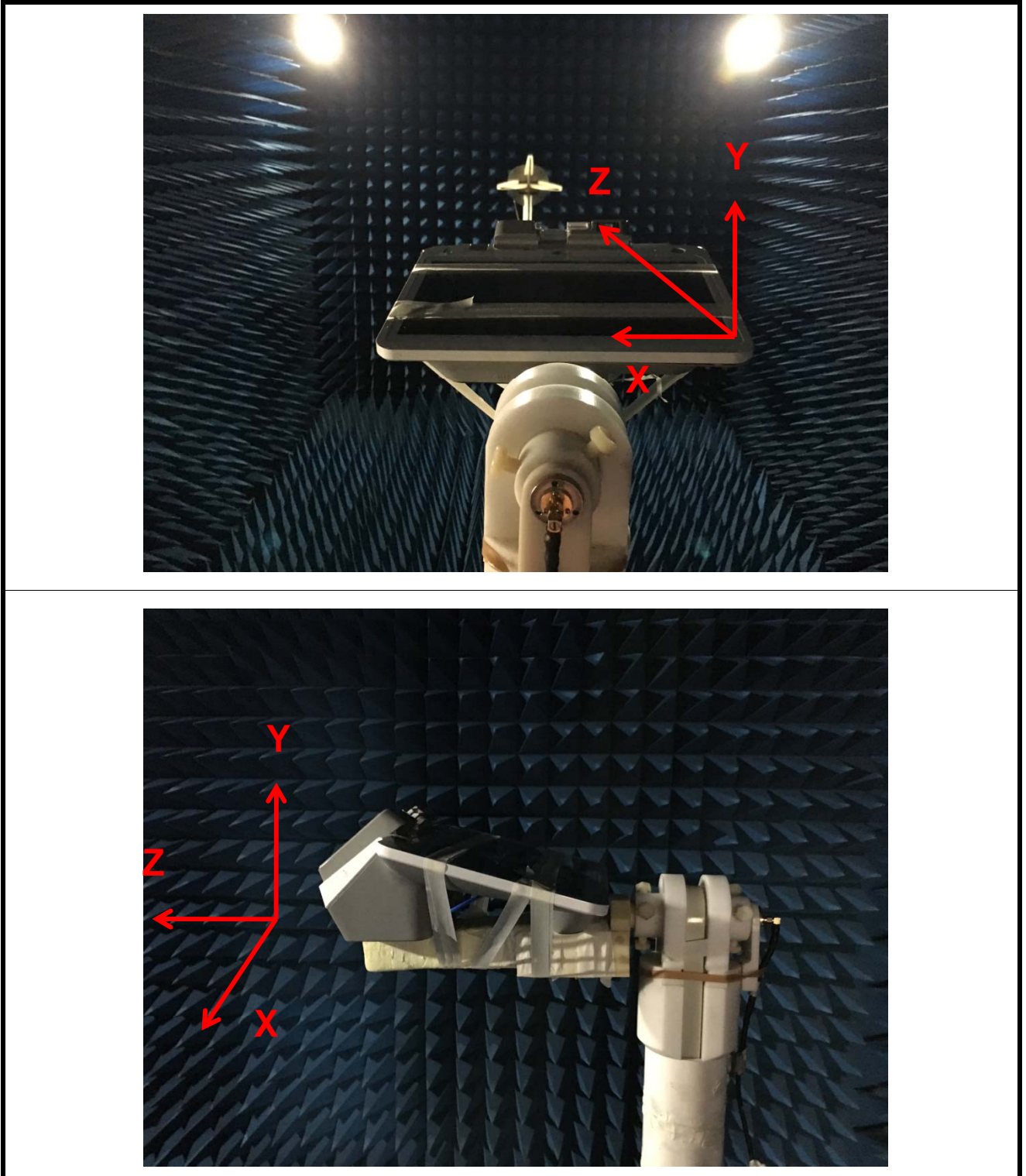


S Parameter Test // WiFi





Antenna Passive Test



add: Yuanfu Industrial Park, No.59, Muyu Road, Shatou Community, Chang'an Town, Dongguan, Guangdong



Passive Test For WiFi Antenna(2.4G)

Freq (MHz)	Effi (%)	Effi (dB)	Gain (dBi)
2400	48.0 -3.2		0.7
2410	48.2 -3.2		0.5
2420	48.3 -3.2		0.7
2430	47.7 -3.2		0.7
2440	48.1 -3.2		0.7
2450	50.8 -2.9		0.9
2460	50.7 -3.0		0.9
2470	51.3 -2.9		0.8
2480	50.3 -3.0		0.8
2490	49.7 -3.0		1.0
2500	50.7 -3.0		1.0

add: Yuanfu Industrial Park, No.59, Muyu Road, Shatou Community, Chang'an Town, Dongguan, Guangdong



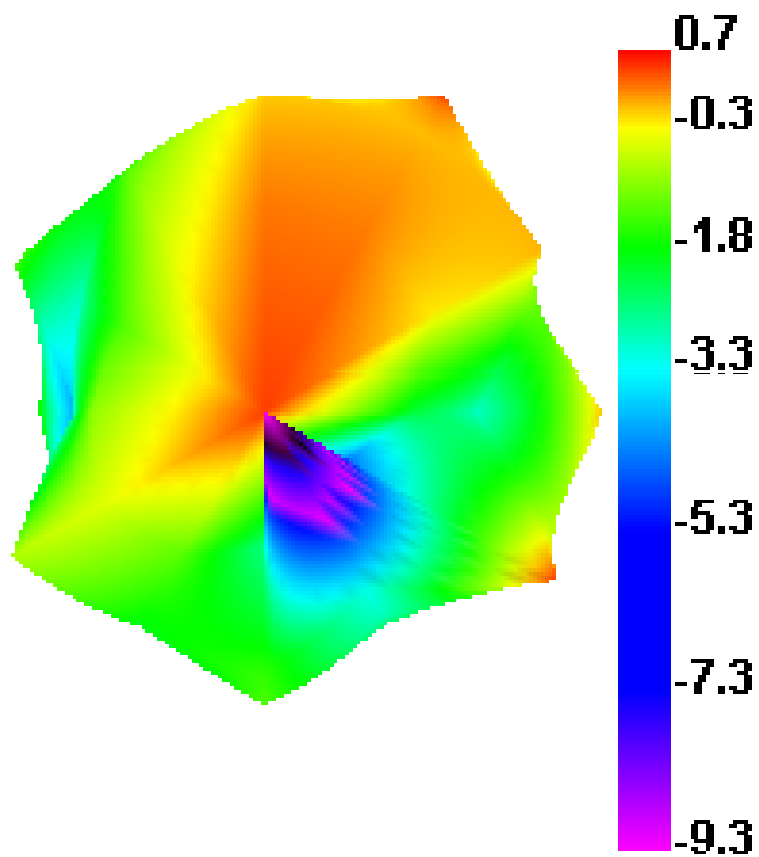
Passive Test For WiFi Antenna(5.8G)			
Freq (MHz)	Effi (%)	Effi (dB)	Gain (dBi)
5150	41.2	-3.9	2.0
5200	49.5	-3.1	2.0
5250	50.3	-3.0	2.0
5300	51.0	-2.9	2.0
5350	45.2	-3.5	2.0
5400	41.9	-3.8	2.0
5450	42.4	-3.7	1.9
5500	46.2	-3.4	2.0
5550	43.3	-3.6	1.2
5600	43.9	-3.6	1.5
5650	58.5	-2.3	2.0
5700	54.1	-2.7	2.0
5750	50.7	-3.0	2.0
5800	41.7	-3.8	1.4
5850	37.4	-4.3	0.7

add: Yuanfu Industrial Park, No.59, Muyu Road, Shatou Community, Chang'an Town, Dongguan, Guangdong



Radiation Pattern For Wifi2.4 Antenna(2400MHz)

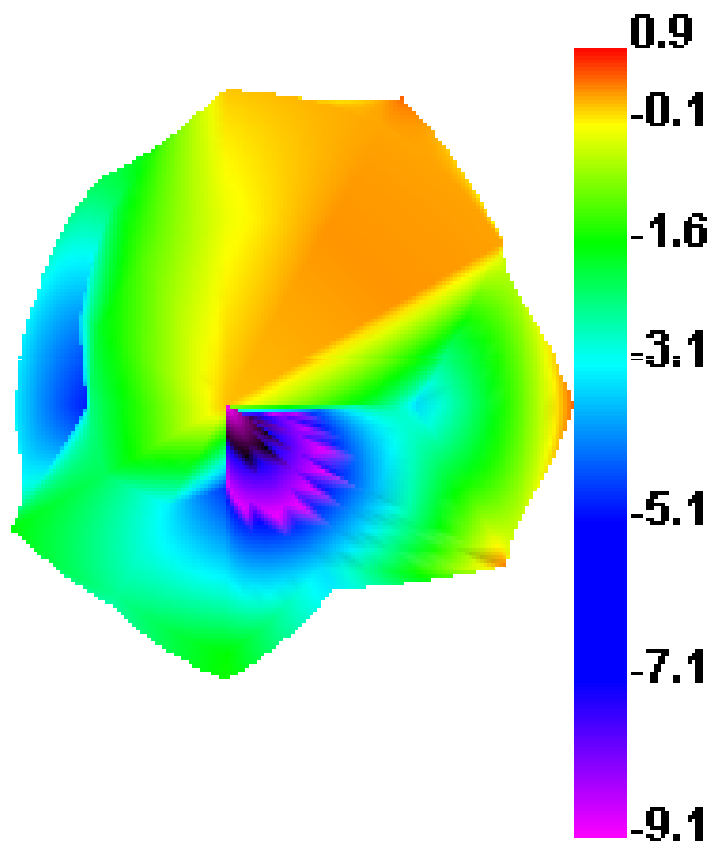
2400.000MHz





Radiation Pattern For Wifi2.4 Antenna(2450MHz)

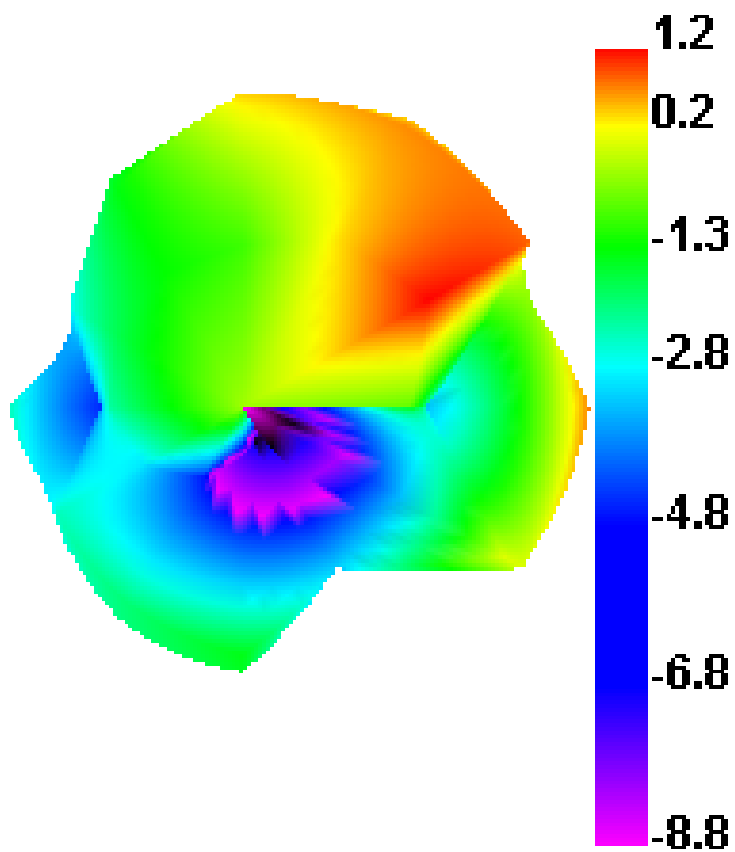
2450.000MHz





Radiation Pattern For Wifi2.4 Antenna(2500MHz)

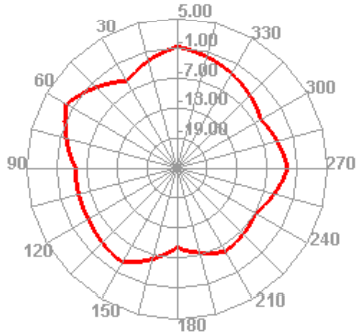
2500.000MHz



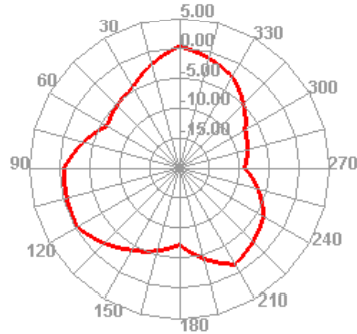


Radiation Pattern For Wifi2.4 Antenna(2400MHz/2450MHz/2500MHz)

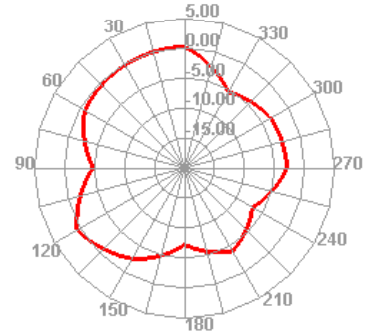
2400.000MHz H



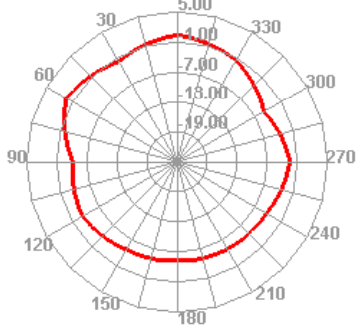
2400.000MHz E1



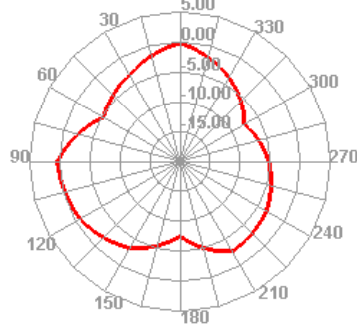
2400.000MHz E2



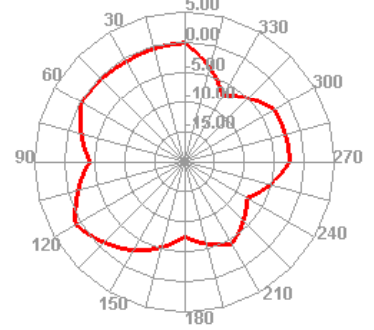
2450.000MHz H



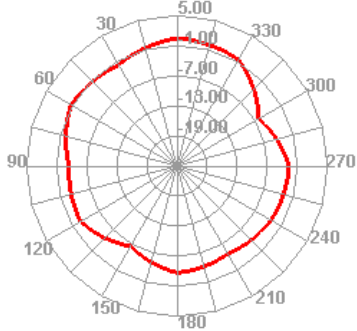
2450.000MHz E1



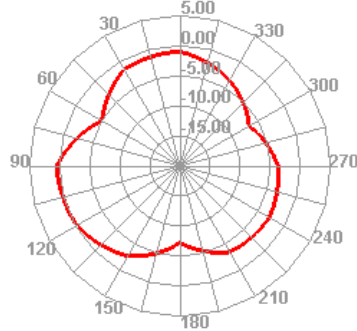
2450.000MHz E2



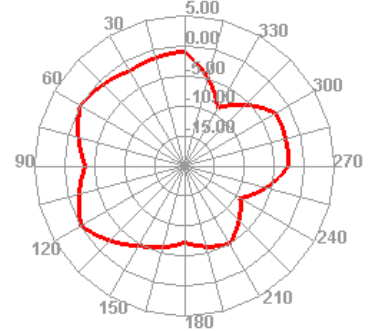
2500.000MHz H



2500.000MHz E1



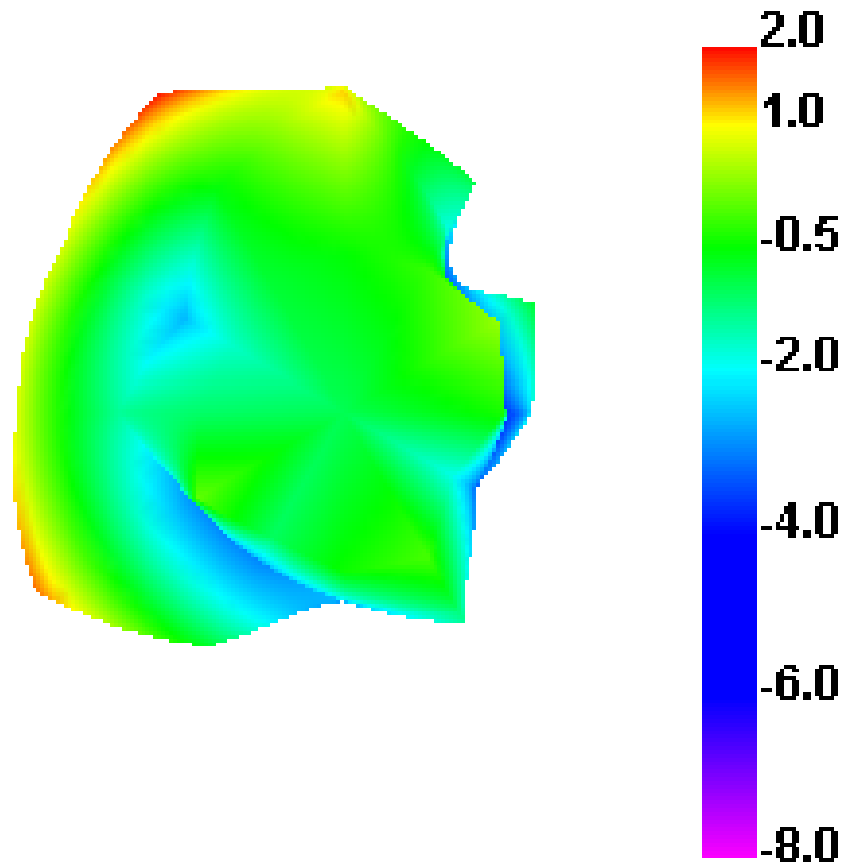
2500.000MHz E2





Radiation Pattern For Wifi5.8 Antenna(5150MHz)

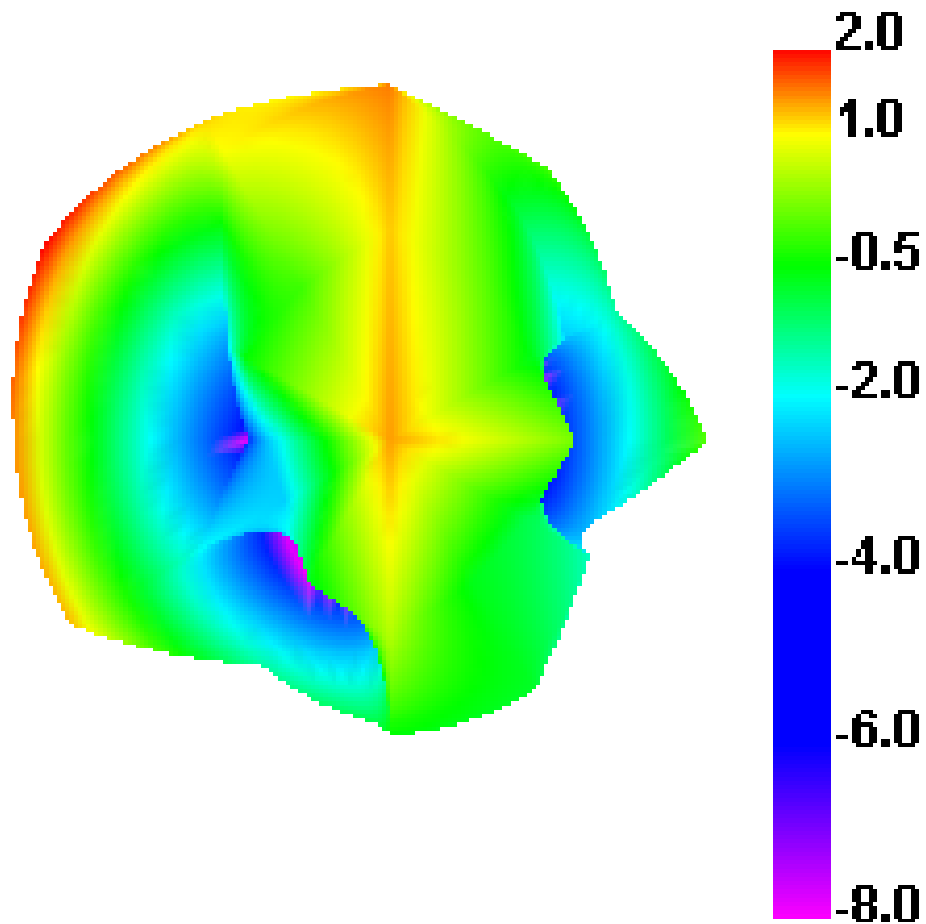
5150.000MHz





Radiation Pattern For Wifi5.8 Antenna(5500MHz)

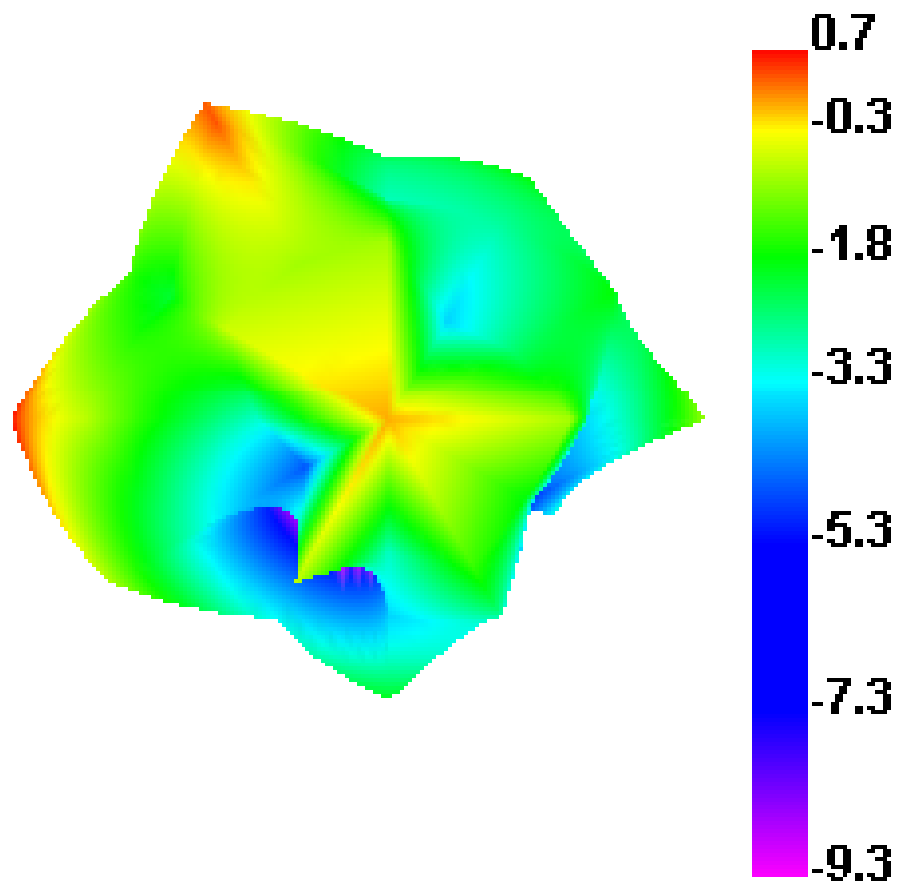
5500.000MHz





Radiation Pattern For Wifi5.8 Antenna(5850MHz)

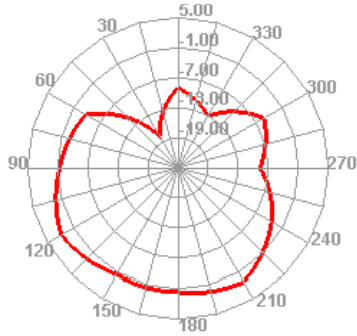
5850.000MHz



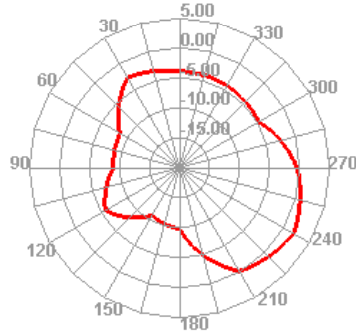


Radiation Pattern For Wifi5.8 Antenna(5150MHz/5500MHz/5850MHz)

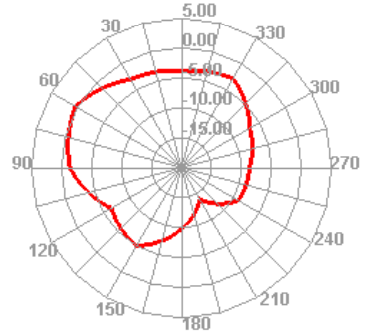
5150.000MHz H



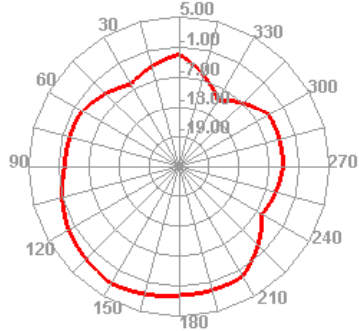
5150.000MHz E1



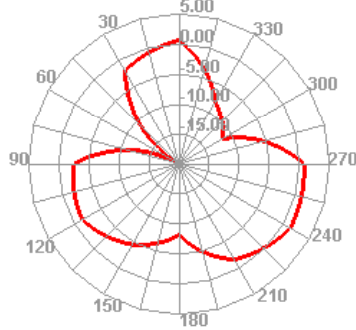
5150.000MHz E2



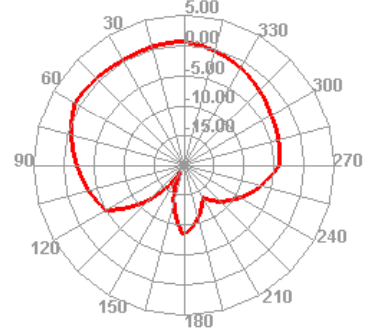
5500.000MHz H



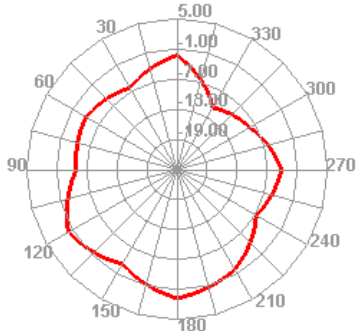
5500.000MHz E1



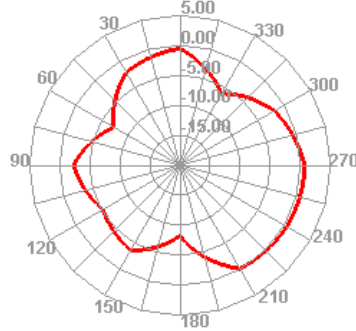
5500.000MHz E2



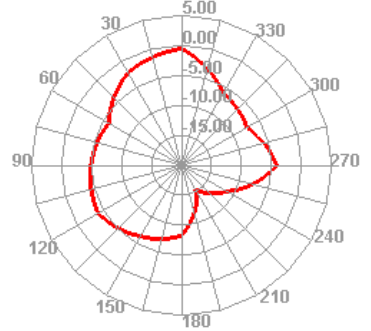
5850.000MHz H



5850.000MHz E1

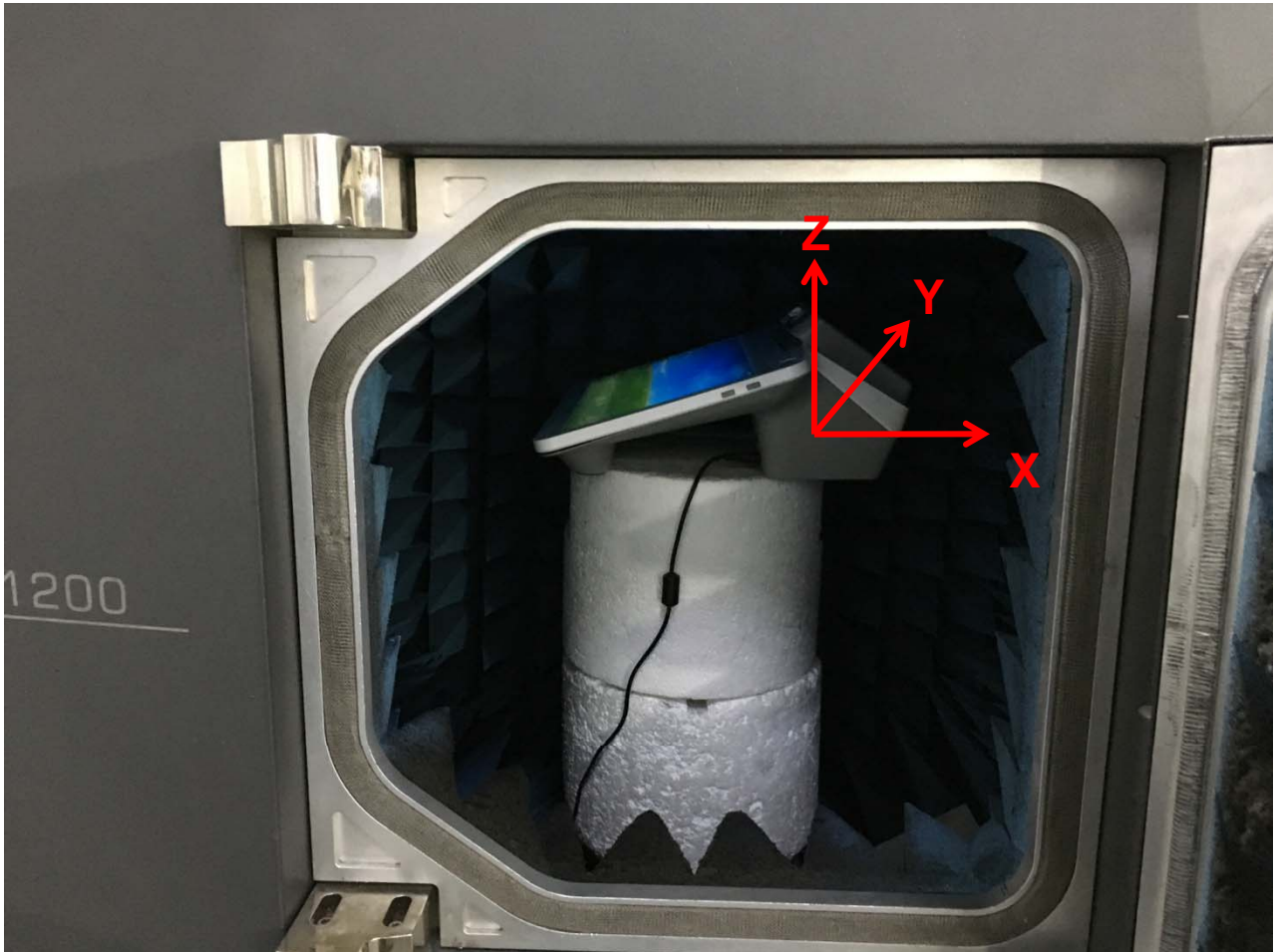


5850.000MHz E2





Antenna Active Test





Active Test For WIFI					
Band	Channel	Data Rate	TRP	Data Rate	TIS
WIFI 2.4G 802.11b	1	11Mbps	12.0 -80.8	11Mbps	
	6		12.0 -81.4		
	13		12.2		-81.8
WIFI 5.8G 802.11a	36	6Mbps	10.2 -69.0	54Mbps	
	149		10.4 -69.1		
	165		9.8 -69.3		

add: Yuanfu Industrial Park, No.59, Muyu Road, Shatou Community, Chang'an Town, Dongguan, Guangdong