

System Check_13MHz

DUT: CLA13-SN:1020

Communication System: UID 0, CW (0); Frequency: 13 MHz; Duty Cycle: 1:1

Medium: HSL_13_231211 Medium parameters used: $f = 13 \text{ MHz}$; $\sigma = 0.752 \text{ S/m}$; $\epsilon_r = 54.218$; $\rho = 1000 \text{ kg/m}^3$

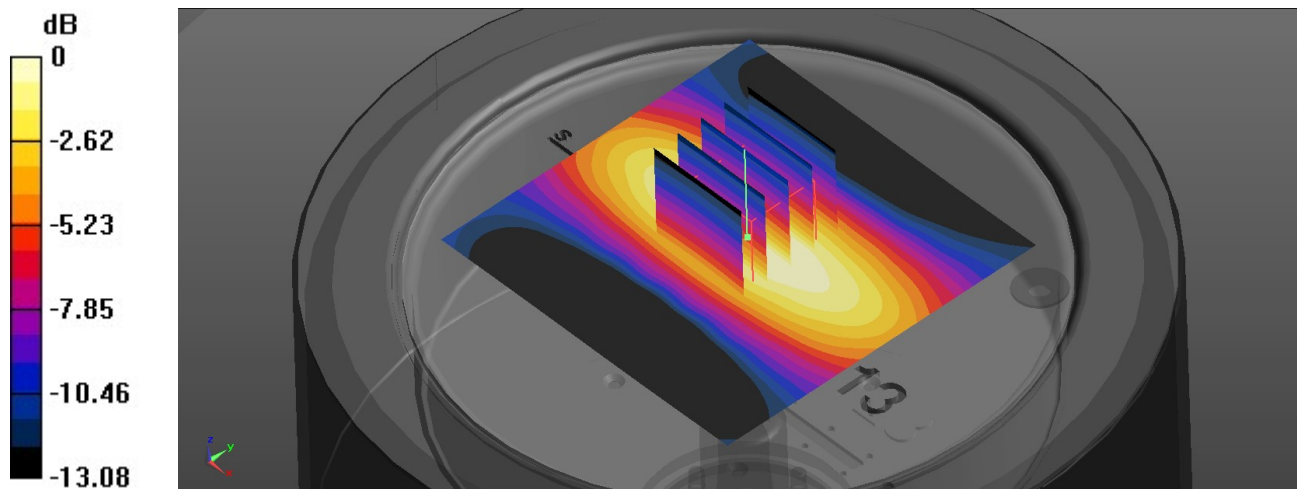
Ambient Temperature : 23.3 °C; Liquid Temperature : 22.4 °C

DASY5 Configuration:

- Probe: EX3DV4 - SN7641; ConvF(19.17, 19.17, 19.17); Calibrated: 2023/04/24
- Sensor-Surface: 1.4mm (Mechanical Surface Detection)
- Electronics: DAE4 Sn1664; Calibrated: 2023/06/06
- Phantom: ELI V8.0 (Left); Type: QD OVA 004 AA; Serial: 2131
- Measurement SW: DASY52, Version 52.10 (4); SEMCAD X Version 14.6.14 (7483)

Pin=250mW/Area Scan (71x71x1): Interpolated grid: $dx=1.500 \text{ mm}$, $dy=1.500 \text{ mm}$
Maximum value of SAR (interpolated) = 0.231 W/kg

Pin=250mW/Zoom Scan (5x5x7)/Cube 0: Measurement grid: $dx=8\text{mm}$, $dy=8\text{mm}$, $dz=5\text{mm}$
Reference Value = 12.67 V/m; Power Drift = 0.03 dB
Peak SAR (extrapolated) = 0.403 W/kg
SAR(1 g) = 0.143 W/kg; SAR(10 g) = 0.09 W/kg
Maximum value of SAR (measured) = 0.23 W/kg



0 dB = 0.23 W/kg