

SGS-CSTC Standards Technical Services Co., Ltd. Shenzhen Branch

SZEMC-TRF-01 Rev. A/0 Aug01,2022

Report No.: SZCR230200035201

Page: 95 of 148

Note: All the equipments are within the valid period when the tests are performed.

All measurement facilities used to collect the measurement data are located at

No. 1 Workshop, M-10, Middle Section, Science & Technology Park, Nanshan District, Shenzhen, Guangdong, China. 518057.



SGS-CSTC Standards Technical Services Co., Ltd.
Shenzhen Branch Technical Services Laboratory

Unless otherwise agreed in writing, this document is issued by the Company subject to its General Conditions of Service printed overleaf, available on request or accessible at <https://www.sgs.com/en/Terms-and-Conditions>. Attention is drawn to the limitation of liability, indemnification and jurisdiction issues defined therein. Any holder of this document is advised that information contained hereon reflects the Company's findings at the time of its intervention only and within the limits of Client's instructions, if any. The Company's sole responsibility is to its Client and this document does not exonerate parties to a transaction from exercising all their rights and obligations under the transaction documents. This document cannot be reproduced except in full, without prior written approval of the Company. Any unauthorized alteration, forgery or falsification of the content or appearance of this document is unlawful and offenders may be prosecuted to the fullest extent of the law. Unless otherwise stated the results shown in this test report refer only to the sample(s) tested and such sample(s) are retained for 30 days only.

Attention: To check the authenticity of testing /inspection report & certificate, please contact us at telephone: (86-755) 83071443, or email: CN.Doccheck@sgs.com

No.1 Workshop, M-10, Middle Section, Science & Technology Park, Nanshan District, Shenzhen, Guangdong, China 518057 t (86-755) 26012053 f (86-755) 26710594 www.sgs.com
中国·广东·深圳市南山区科技园中区M-10栋1号厂房 邮编: 518057 t (86-755) 26012053 f (86-755) 26710594 sgs.china@sgs.com

9 Calibration certificate

Please see the Appendix C

10 Photographs

Please see the Appendix D





SGS-CSTC Standards Technical Services Co., Ltd. Shenzhen Branch

SZEMC-TRF-01 Rev. A/0 Aug01,2022

Report No.: SZCR230200035201

Page: 97 of 148

Appendix A: Detailed System Check Results



SGS-CSTC Standards Technical Services Co., Ltd.
Shenzhen Branch Technical Services Laboratory

Unless otherwise agreed in writing, this document is issued by the Company subject to its General Conditions of Service printed overleaf, available on request or accessible at <https://www.sgs.com/en/Terms-and-Conditions>. Attention is drawn to the limitation of liability, indemnification and jurisdiction issues defined therein. Any holder of this document is advised that information contained hereon reflects the Company's findings at the time of its intervention only and within the limits of Client's instructions, if any. The Company's sole responsibility is to its Client and this document does not exonerate parties to a transaction from exercising all their rights and obligations under the transaction documents. This document cannot be reproduced except in full, without prior written approval of the Company. Any unauthorized alteration, forgery or falsification of the content or appearance of this document is unlawful and offenders may be prosecuted to the fullest extent of the law. Unless otherwise stated the results shown in this test report refer only to the sample(s) tested and such sample(s) are retained for 30 days only.

Attention: To check the authenticity of testing /inspection report & certificate, please contact us at telephone: (86-755) 83071443, or email: CN.Doccheck@sgs.com

No.1 Workshop, M-10, Middle Section, Science & Technology Park, Nanshan District, Shenzhen, Guangdong, China 518057 t (86-755) 26012053 f (86-755) 26710594 www.sgs.com.cn
中国·广东·深圳市南山区科技园中区M-10栋1号厂房 邮编: 518057 t (86-755) 26012053 f (86-755) 26710594 sgs.china@sgs.com

SGS-CSTC Standards Technical Services Co., Ltd. Shenzhen Branch

SZEMC-TRF-01 Rev. A/0 Aug01,2022

Report No.: SZCR230200035201

Page: 98 of 148

Date: 2023/4/24

Test Laboratory: SGS-CSTC Standards Technical Services Co., Ltd., Shenzhen Branch

System Performance Check 750 MHz Head

DUT: Dipole 750 MHz; Type: D750V3; Serial: 1188

Communication System: CW (0); Frequency: 750 MHz; Duty Cycle: 1:1

Medium parameters used: $f = 750 \text{ MHz}$; $\sigma = 0.902 \text{ S/m}$; $\epsilon_r = 42.012$; $\rho = 1000 \text{ kg/m}^3$

Phantom section: Flat Section

Measurement Standard: DASYS (IEEE/IEC/ANSI C63.19-2011)

DASY5 Configuration:

- Probe: EX3DV4 - SN3836; ConvF(9.28, 9.28, 9.28); Calibrated: 2022/6/27;
- Sensor-Surface: 3mm (Mechanical Surface Detection)
- Electronics: DAE4 Sn760; Calibrated: 2022/6/6
- Phantom: SAM2; Type: QD000P40CD; Serial: TP:1673
- Measurement SW: DASYS2, Version 52.8 (4); SEMCAD X Version 14.6.8 (7028)

Configuration/d=15mm, Pin=250mW/Area Scan (6x14x1): Measurement grid: dx=15mm, dy=15mm

Maximum value of SAR (measured) = 5.17 W/kg

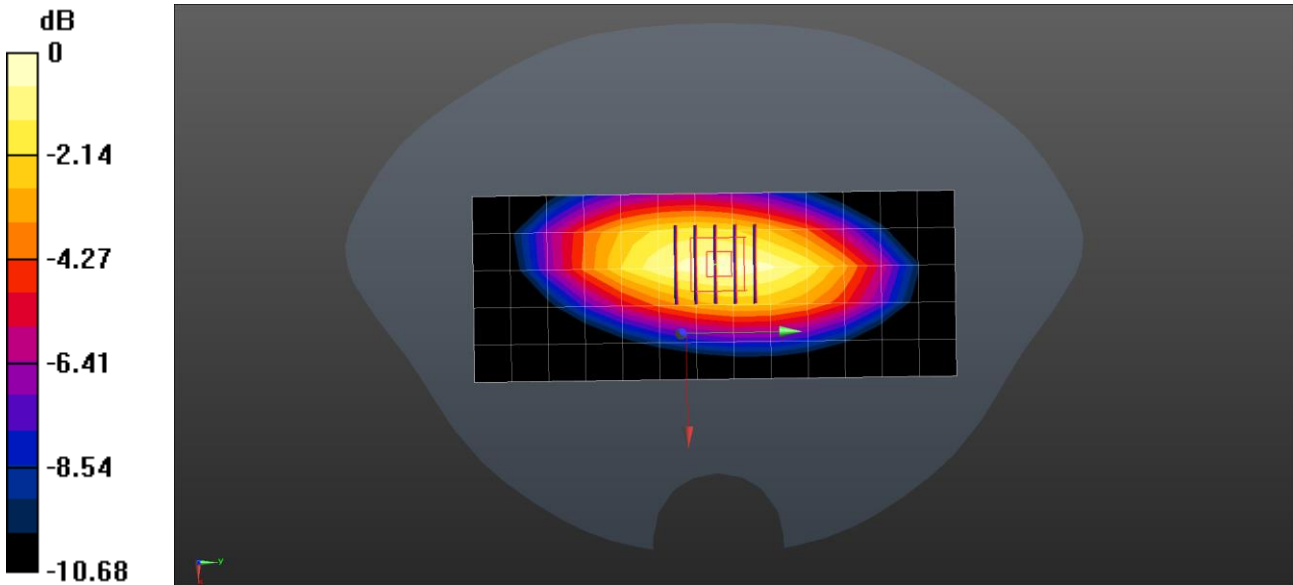
Configuration/d=15mm, Pin=250mW/Zoom Scan (5x5x7)/Cube 0: Measurement grid: dx=8mm, dy=8mm, dz=5mm

Reference Value = 64.340 V/m; Power Drift = 0.06 dB

Peak SAR (extrapolated) = 7.16 W/kg

SAR(1 g) = 2.06 W/kg; SAR(10 g) = 1.36 W/kg

Maximum value of SAR (measured) = 5.37 W/kg



0 dB = 5.37 W/kg = 7.30 dBW/kg



SGS-CSTC Standards Technical Services Co., Ltd.
Shenzhen Branch

Unless otherwise agreed in writing, this document is issued by the Company subject to its General Conditions of Service printed overleaf, available on request or accessible at <https://www.sgs.com/en/Terms-and-Conditions>. Attention is drawn to the limitation of liability, indemnification and jurisdiction issues defined therein. Any holder of this document is advised that information contained hereon reflects the Company's findings at the time of its intervention only and within the limits of Client's instructions, if any. The Company's sole responsibility is to its Client and this document does not exonerate parties to a transaction from exercising all their rights and obligations under the transaction documents. This document cannot be reproduced except in full, without prior written approval of the Company. Any unauthorized alteration, forgery or falsification of the content or appearance of this document is unlawful and offenders may be prosecuted to the fullest extent of the law. Unless otherwise stated the results shown in this test report refer only to the sample(s) tested and such sample(s) are retained for 30 days only.
Attention: To check the authenticity of testing /inspection report & certificate, please contact us at telephone: (86-755) 83071443, or email: CN.Doccheck@sgs.com

No.1 Workshop, M-10, Middle Section, Science & Technology Park, Nanshan District, Shenzhen, Guangdong, China 518057 t (86-755) 26012053 f (86-755) 26710594 www.sgs.com.cn
中国·广东·深圳市南山区科技园中区M-10栋1号厂房 邮编: 518057 t (86-755) 26012053 f (86-755) 26710594 sgs.china@sgs.com

Test Laboratory: SGS-CSTC Standards Technical Services Co., Ltd., Shenzhen Branch
System Performance Check-D835

DUT: Dipole 835 MHz; Type: D835V2; Serial: 4d042

Communication System: CW; Frequency: 835 MHz; Duty Cycle: 1:1

Medium parameters used: $f = 835 \text{ MHz}$; $\sigma = 0.916 \text{ S/m}$; $\epsilon_r = 42.052$; $\rho = 1000 \text{ kg/m}^3$

Phantom section: Flat Section

Measurement Standard: DASYS (IEEE/IEC/ANSI C63.19-2007)

DASY5 Configuration:

- Probe: EX3DV4 - SN3836; ConvF(8.99, 8.99, 8.99); Calibrated: 2022/6/27;
- Sensor-Surface: 2mm (Mechanical Surface Detection)
- Electronics: DAE4 Sn760; Calibrated: 2022/6/6
- Phantom: SAM2; Type: QD000P40CD; Serial: TP:1673
- Measurement SW: DASYS2, Version 52.8 (4); SEMCAD X Version 14.6.8 (7028)

System Performance Check at Frequencies Low 1 GHz/d=15mm, Pin=250 mW, dist=3.0mm (EX-Probe)/Area Scan (7x12x1): Measurement grid: dx=15mm, dy=15mm

Maximum value of SAR (measured) = 3.35 W/kg

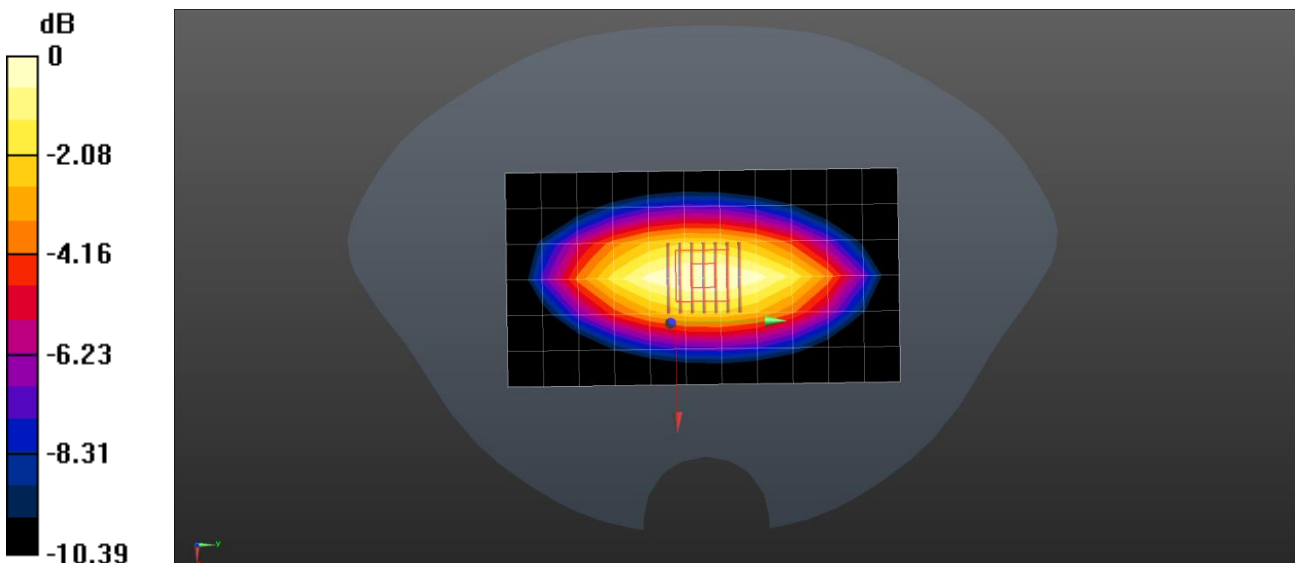
System Performance Check at Frequencies Low 1 GHz/d=15mm, Pin=250 mW, dist=3.0mm (EX-Probe)/Zoom Scan (7x7x7) (7x7x7)/Cube 0: Measurement grid: dx=5mm, dy=5mm, dz=5mm

Reference Value = 62.474 V/m; Power Drift = -0.09 dB

Peak SAR (extrapolated) = 3.65 W/kg

SAR(1 g) = 2.36 W/kg; SAR(10 g) = 1.58 W/kg

Maximum value of SAR (measured) = 3.10 W/kg



0 dB = 3.10 W/kg = 4.91 dBW/kg



Test Laboratory: SGS-CSTC Standards Technical Services Co., Ltd., Shenzhen Branch

System Performance Check-D1800

DUT: Dipole 1800 MHz; Type: D1800V2; Serial:254

Communication System: CW; Frequency: 1800 MHz; Duty Cycle: 1:1

Medium parameters used: $f = 1800 \text{ MHz}$; $\sigma = 1.383 \text{ S/m}$; $\epsilon_r = 39.873$; $\rho = 1000 \text{ kg/m}^3$

Phantom section: Flat Section

Measurement Standard: DASY5 (IEEE/IEC/ANSI C63.19-2007)

DASY5 Configuration:

- Probe: EX3DV4 - SN3836; ConvF(8.02, 8.02, 8.02); Calibrated: 2022/6/27;
- Sensor-Surface: 2mm (Mechanical Surface Detection)
- Electronics: DAE4 Sn760; Calibrated: 2022/6/6
- Phantom: SAM2; Type: QD000P40CD; Serial: TP:1673
- Measurement SW: DASY52, Version 52.8 (4); SEMCAD X Version 14.6.8 (7028)

System Performance Check at Frequencies above 1 GHz/d=10mm, Pin=250 mW, dist=3.0mm (EX-Probe)/Area Scan (7x7x1): Measurement grid: dx=15mm, dy=15mm

Maximum value of SAR (measured) = 11.1 W/kg

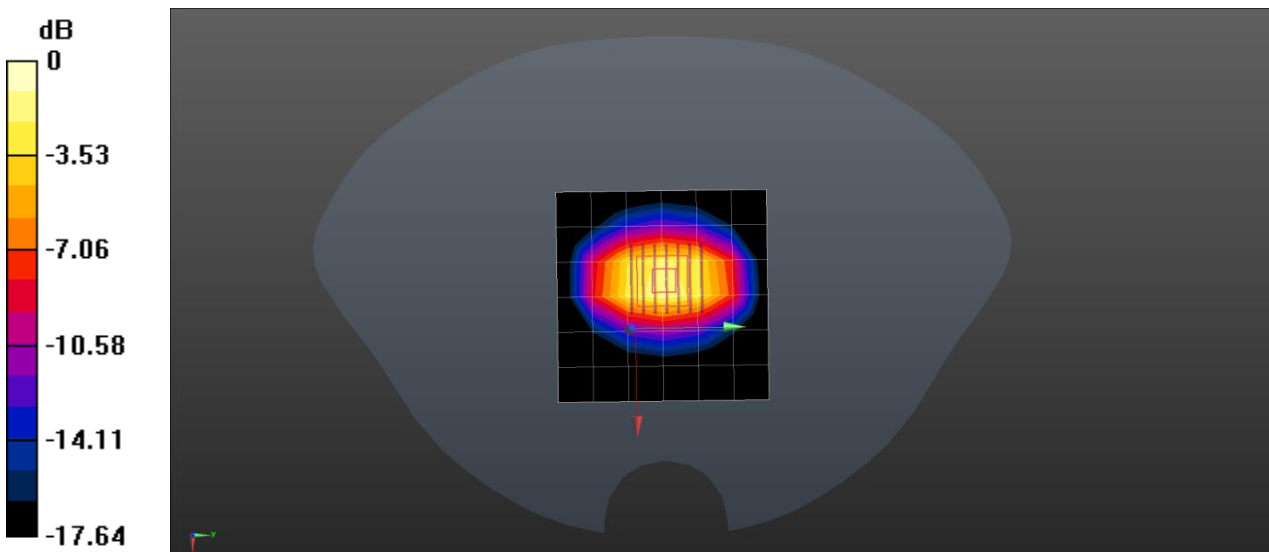
System Performance Check at Frequencies above 1 GHz/d=10mm, Pin=250 mW, dist=3.0mm (EX-Probe)/Zoom Scan (7x7x7) (7x7x7)/Cube 0: Measurement grid: dx=5mm, dy=5mm, dz=5mm

Reference Value = 106.1 V/m; Power Drift = 0.03 dB

Peak SAR (extrapolated) = 20.1 W/kg

SAR(1 g) = 9.88 W/kg; SAR(10 g) = 5.19 W/kg

Maximum value of SAR (measured) = 15.6 W/kg



0 dB = 15.6 W/kg = 11.93 dBW/kg



SGS-CSTC Standards Technical Services Co., Ltd. Shenzhen Branch

SZEMC-TRF-01 Rev. A/0 Aug01,2022

Report No.: SZCR230200035201

Page: 101 of 148

Date: 2023/5/6

Test Laboratory: SGS-CSTC Standards Technical Services Co., Ltd., Shenzhen Branch

System Performance Check 1900 MHz

DUT: Dipole 1900 MHz; Type: D1900V2; Serial: 5d136

Communication System: CW (0); Frequency: 1900 MHz; Duty Cycle: 1:1

Medium parameters used: $f = 1900 \text{ MHz}$; $\sigma = 1.41 \text{ S/m}$; $\epsilon_r = 39.665$; $\rho = 1000 \text{ kg/m}^3$

Phantom section: Flat Section

Measurement Standard: DASYS (IEEE/IEC/ANSI C63.19-2007)

DASY5 Configuration:

- Probe: EX3DV4 - SN3836; ConvF(7.65, 7.65, 7.65); Calibrated: 2022/6/27;
- Sensor-Surface: 3mm (Mechanical Surface Detection)
- Electronics: DAE4 Sn760; Calibrated: 2022/6/6
- Phantom: SAM2; Type: QD000P40CD; Serial: TP:1673
- Measurement SW: DASYS2, Version 52.8 (4); SEMCAD X Version 14.6.8 (7028)

Body/d=10mm, Pin=250mW/Area Scan (5x7x1): Measurement grid: dx=15mm, dy=15mm

Maximum value of SAR (measured) = 10.0 W/kg

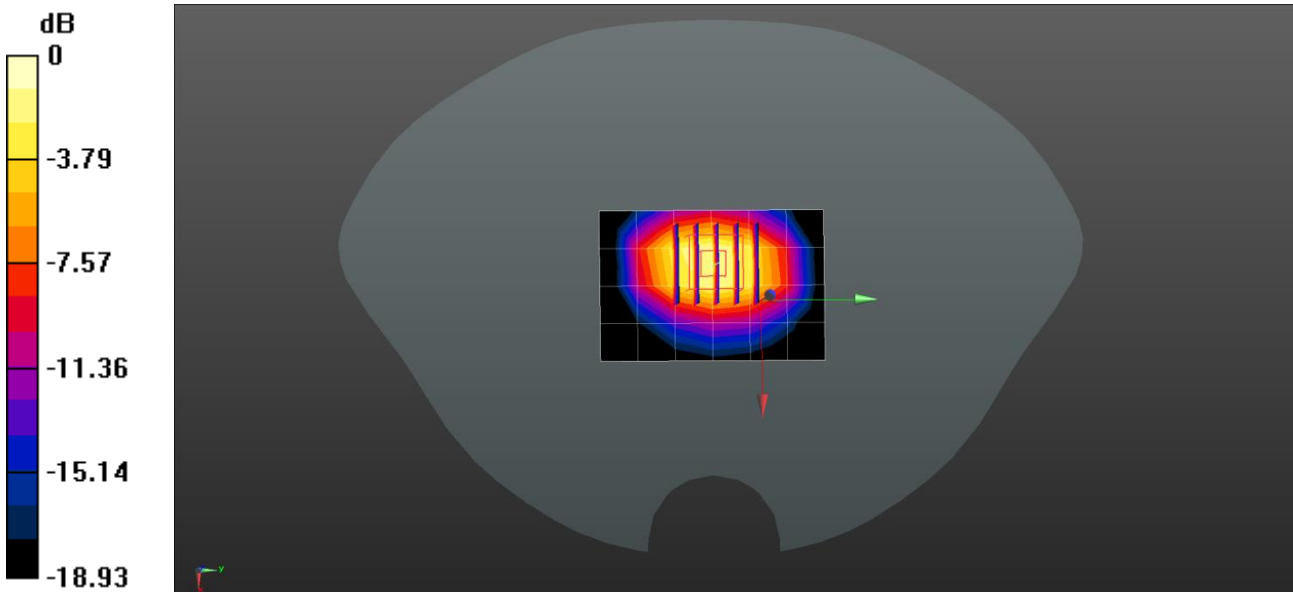
Body/d=10mm, Pin=250mW/Zoom Scan (5x5x7)/Cube 0: Measurement grid: dx=8mm, dy=8mm, dz=5mm

Reference Value = 75.458 V/m; Power Drift = 0.05 dB

Peak SAR (extrapolated) = 20.1 W/kg

SAR(1 g) = 10.1 W/kg; SAR(10 g) = 5.19 W/kg

Maximum value of SAR (measured) = 13.5 W/kg



0 dB = 13.5 W/kg = 11.30 dBW/kg



SGS-CSTC Standards Technical Services Co., Ltd.
Shenzhen Branch

Unless otherwise agreed in writing, this document is issued by the Company subject to its General Conditions of Service printed overleaf, available on request or accessible at <https://www.sgs.com/en/Terms-and-Conditions>. Attention is drawn to the limitation of liability, indemnification and jurisdiction issues defined therein. Any holder of this document is advised that information contained hereon reflects the Company's findings at the time of its intervention only and within the limits of Client's instructions, if any. The Company's sole responsibility is to its Client and this document does not exonerate parties to a transaction from exercising all their rights and obligations under the transaction documents. This document cannot be reproduced except in full, without prior written approval of the Company. Any unauthorized alteration, forgery or falsification of the content or appearance of this document is unlawful and offenders may be prosecuted to the fullest extent of the law. Unless otherwise stated the results shown in this test report refer only to the sample(s) tested and such sample(s) are retained for 30 days only.
Attention: To check the authenticity of testing /inspection report & certificate, please contact us at telephone: (86-755) 83071443, or email: CN.Doccheck@sgs.com

No.1 Workshop, M-10, Middle Section, Science & Technology Park, Nanshan District, Shenzhen, Guangdong, China 518057 t (86-755) 26012053 f (86-755) 26710594 www.sgs.com.cn
中国·广东·深圳市南山区科技园中区M-10栋1号厂房 邮编: 518057 t (86-755) 26012053 f (86-755) 26710594 sgs.china@sgs.com

Test Laboratory: SGS-CSTC Standards Technical Services Co., Ltd., Shenzhen Branch

System Performance Check 2450MHz

DUT: Dipole 2450 MHz; Type: D2450V2; Serial: 955

Communication System: CW; Frequency: 2450 MHz; Duty Cycle: 1:1

Medium parameters used: $f = 2450 \text{ MHz}$; $\sigma = 1.817 \text{ S/m}$; $\epsilon_r = 39.995$; $\rho = 1000 \text{ kg/m}^3$

Phantom section: Flat Section

Measurement Standard: DASYS5 (IEEE/IEC/ANSI C63.19-2007)

DASY5 Configuration:

- Probe: EX3DV4 - SN3836; ConvF(7.27, 7.27, 7.27); Calibrated: 2022/6/27;
- Sensor-Surface: 1.4mm (Mechanical Surface Detection)
- Electronics: DAE4 Sn760; Calibrated: 2022/6/6
- Phantom: SAM2; Type: QD000P40CD; Serial: TP:1673
- Measurement SW: DASYS52, Version 52.8 (4); SEMCAD X Version 14.6.8 (7028)

Body/d=10mm, Pin=250mW/Area Scan (8x8x1): Measurement grid: dx=12mm, dy=12mm

Maximum value of SAR (measured) = 19.9 W/kg

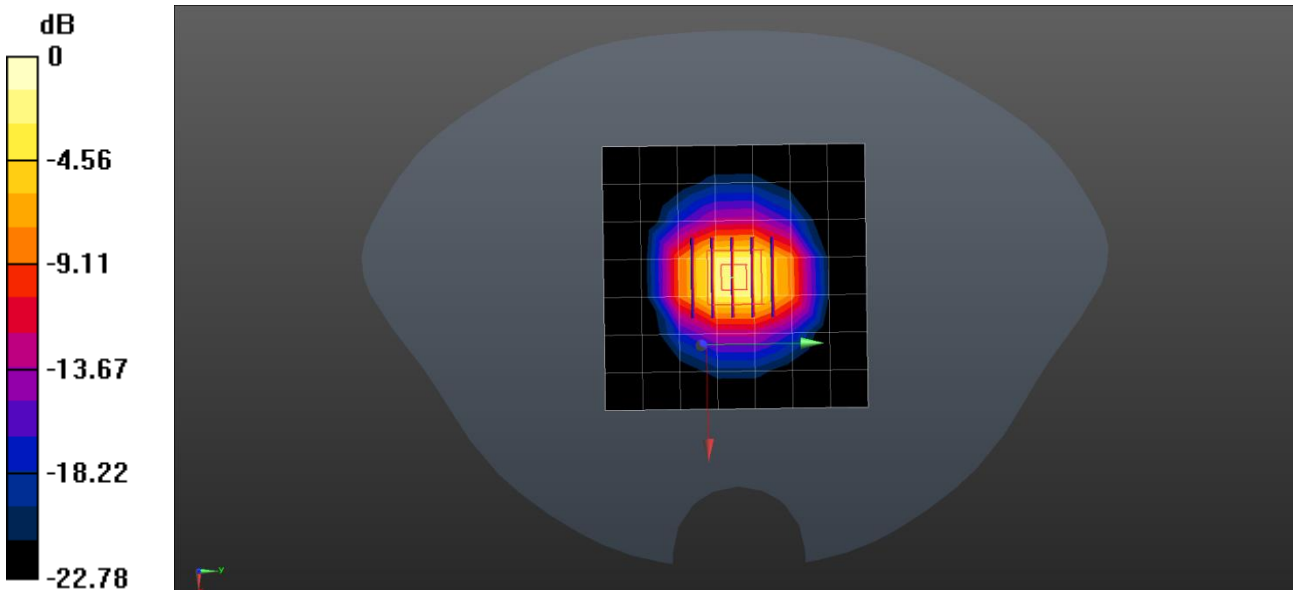
Body/d=10mm, Pin=250mW/Zoom Scan (5x5x7)/Cube 0: Measurement grid: dx=5mm, dy=5mm, dz=5mm

Reference Value = 118.4 V/m; Power Drift = -0.02 dB

Peak SAR (extrapolated) = 45.1 W/kg

SAR(1 g) = 13.1 W/kg; SAR(10 g) = 6.12 W/kg

Maximum value of SAR (measured) = 36.9 W/kg



0 dB = 36.9 W/kg = 15.67 dBW/kg



SGS-CSTC Standards Technical Services Co., Ltd. Shenzhen Branch

SZEMC-TRF-01 Rev. A/0 Aug01,2022

Report No.: SZCR230200035201

Page: 103 of 148

Date: 2023/04/22

Test Laboratory: SGS-CSTC Standards Technical Services Co., Ltd., Shenzhen Branch

System Performance Check 2600MHz

DUT: Dipole 2600 MHz; Type: D2600V2; Serial: 1158

Communication System: CW (0); Frequency: 2600 MHz; Duty Cycle: 1:1

Medium parameters used: $f = 2600 \text{ MHz}$; $\sigma = 1.967 \text{ S/m}$; $\epsilon_r = 39.725$; $\rho = 1000 \text{ kg/m}^3$

Phantom section: Flat Section

Measurement Standard: DASY5 (IEEE/IEC/ANSI C63.19-2007)

DASY5 Configuration:

- Probe: EX3DV4 - SN3836; ConvF(6.99, 6.99, 6.99); Calibrated: 2022/6/27;
- Sensor-Surface: 1.4mm (Mechanical Surface Detection)
- Electronics: DAE4 Sn760; Calibrated: 2022/6/6
- Phantom: SAM2; Type: QD000P40CD; Serial: TP:1673
- Measurement SW: DASY52, Version 52.8 (4); SEMCAD X Version 14.6.8 (7028)

Body/d=10mm, Pin=250mW/Area Scan (5x8x1): Measurement grid: dx=12mm, dy=12mm

Maximum value of SAR (measured) = 25.4 W/kg

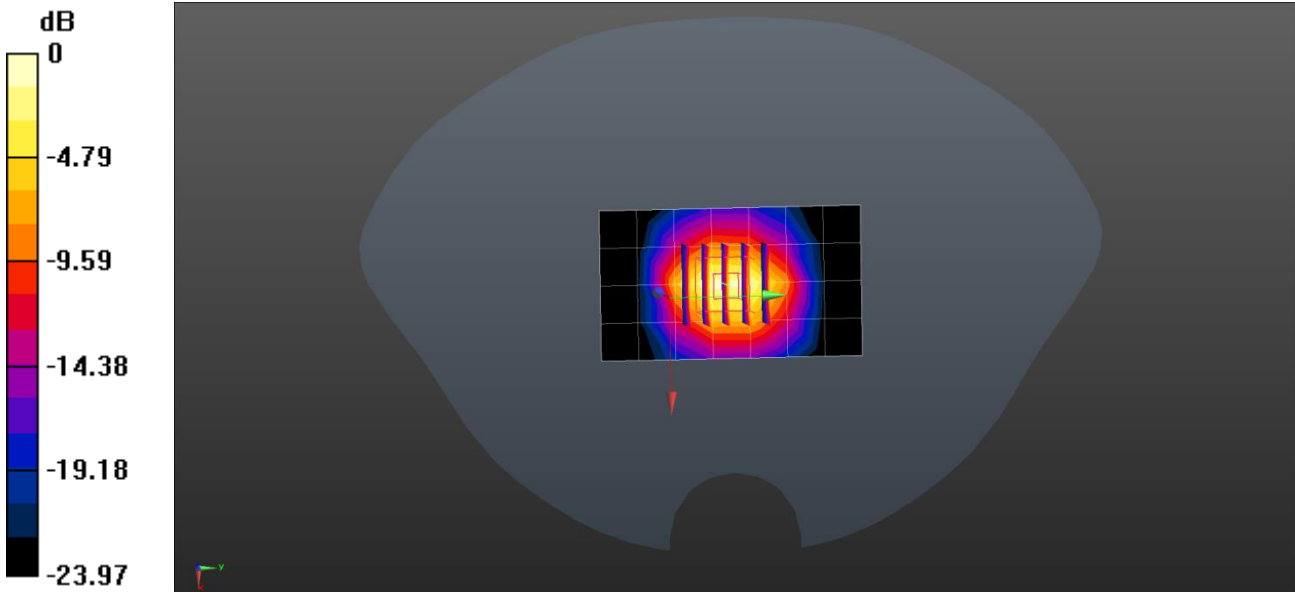
Body/d=10mm, Pin=250mW/Zoom Scan (5x5x7)/Cube 0: Measurement grid: dx=5mm, dy=5mm, dz=5mm

Reference Value = 97.696 V/m; Power Drift = -0.10 dB

Peak SAR (extrapolated) = 36.8 W/kg

SAR(1 g) = 14.4 W/kg; SAR(10 g) = 6.33 W/kg

Maximum value of SAR (measured) = 29.6 W/kg



0 dB = 29.6 W/kg = 14.71 dBW/kg



SGS-CSTC Standards Technical Services Co., Ltd.
Shenzhen Branch

Unless otherwise agreed in writing, this document is issued by the Company subject to its General Conditions of Service printed overleaf, available on request or accessible at <https://www.sgs.com/en/Terms-and-Conditions>. Attention is drawn to the limitation of liability, indemnification and jurisdiction issues defined therein. Any holder of this document is advised that information contained hereon reflects the Company's findings at the time of its intervention only and within the limits of Client's instructions, if any. The Company's sole responsibility is to its Client and this document does not exonerate parties to a transaction from exercising all their rights and obligations under the transaction documents. This document cannot be reproduced except in full, without prior written approval of the Company. Any unauthorized alteration, forgery or falsification of the content or appearance of this document is unlawful and offenders may be prosecuted to the fullest extent of the law. Unless otherwise stated the results shown in this test report refer only to the sample(s) tested and such sample(s) are retained for 30 days only.

Attention: To check the authenticity of testing /inspection report & certificate, please contact us at telephone: (86-755) 83071443, or email: CN.Doccheck@sgs.com

No.1 Workshop, M-10, Middle Section, Science & Technology Park, Nanshan District, Shenzhen, Guangdong, China 518057 t (86-755) 26012053 f (86-755) 26710594 www.sgsgroup.com.cn
中国·广东·深圳市南山区科技园中区M-10栋1号厂房 邮编: 518057 t (86-755) 26012053 f (86-755) 26710594 sgs.china@sgs.com

Test Laboratory: SGS-CSTC Standards Technical Services Co., Ltd., Shenzhen Branch

System Performance Check 5.25GHz

DUT: Dipole D5GHzV2; Type: D5GHzV2; Serial: 1042

Communication System: CW (0); Frequency: 5250 MHz; Duty Cycle: 1:1

Medium parameters used: $f = 5250$ MHz; $\sigma = 4.659$ S/m; $\epsilon_r = 35.855$; $\rho = 1000$ kg/m³

Phantom section: Flat Section

Measurement Standard: DASY5 (IEEE/IEC/ANSI C63.19-2007)

DASY5 Configuration:

- Probe: EX3DV4 - SN3836; ConvF(5.26, 5.26, 5.26); Calibrated: 2022/6/27;
- Sensor-Surface: 1.4mm (Mechanical Surface Detection)
- Electronics: DAE4 Sn760; Calibrated: 2022/6/6
- Phantom: SAM2; Type: QD000P40CD; Serial: TP:1673
- Measurement SW: DASY52, Version 52.8 (4); SEMCAD X Version 14.6.8 (7028)

Body/d=10mm, Pin=100mW, f=5250 MHz/Area Scan (8x11x1): Measurement grid: dx=10mm, dy=10mm

Maximum value of SAR (measured) = 24.4 W/kg

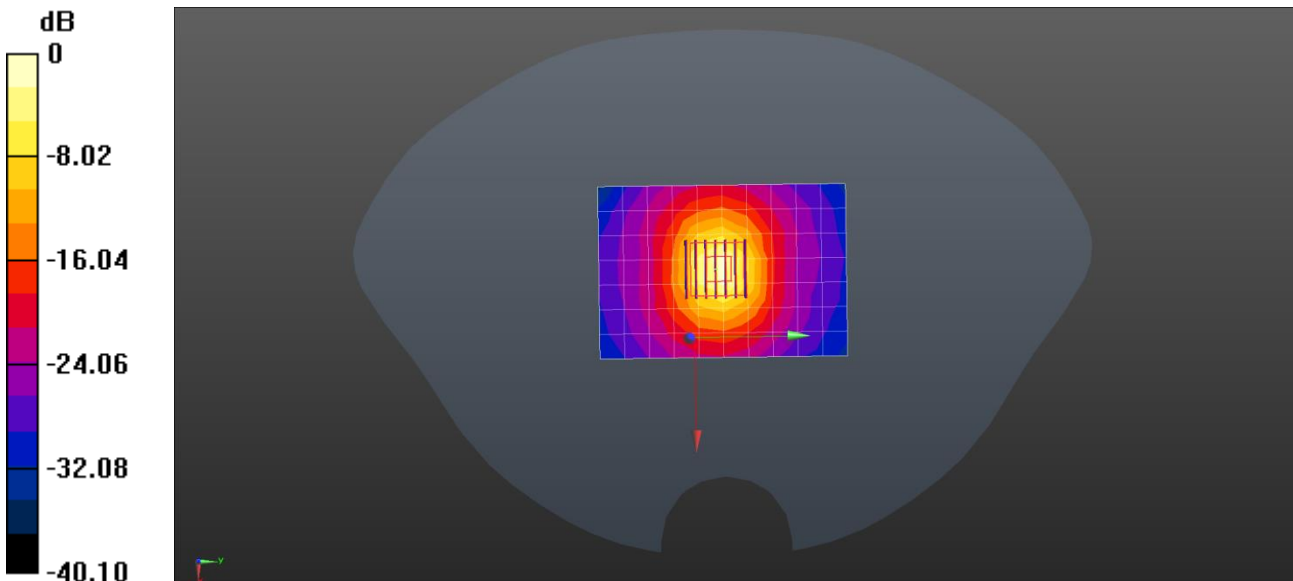
Body/d=10mm, Pin=100mW, f=5250 MHz/Zoom Scan (7x7x7)/Cube 0: Measurement grid: dx=4mm, dy=4mm, dz=1.4mm

Reference Value = 89.135 V/m; Power Drift = -0.02 dB

Peak SAR (extrapolated) = 51.8 W/kg

SAR(1 g) = 7.73 W/kg; SAR(10 g) = 2.16 W/kg

Maximum value of SAR (measured) = 32.6 W/kg



0 dB = 32.6 W/kg = 15.13 dBW/kg



Test Laboratory: SGS-CSTC Standards Technical Services Co., Ltd., Shenzhen Branch

System Performance Check 5.6GHz

DUT: Dipole D5GHzV2; Type: D5GHzV2; Serial: 1042

Communication System: CW (0); Frequency: 5600 MHz; Duty Cycle: 1:1

Medium parameters used: $f = 5600$ MHz; $\sigma = 5.038$ S/m; $\epsilon_r = 34.807$; $\rho = 1000$ kg/m³

Phantom section: Flat Section

Measurement Standard: DASY5 (IEEE/IEC/ANSI C63.19-2007)

DASY5 Configuration:

- Probe: EX3DV4 - SN3836; ConvF(4.7, 4.7, 4.7); Calibrated: 2022/6/27;
- Sensor-Surface: 1.4mm (Mechanical Surface Detection)
- Electronics: DAE4 Sn760; Calibrated: 2022/6/6
- Phantom: SAM2; Type: QD000P40CD; Serial: TP:1673
- Measurement SW: DASY52, Version 52.8 (4); SEMCAD X Version 14.6.8 (7028)

Body/d=10mm, Pin=100mW, f=5600 MHz/Area Scan (8x11x1): Measurement grid: dx=10mm, dy=10mm

Maximum value of SAR (measured) = 26.3 W/kg

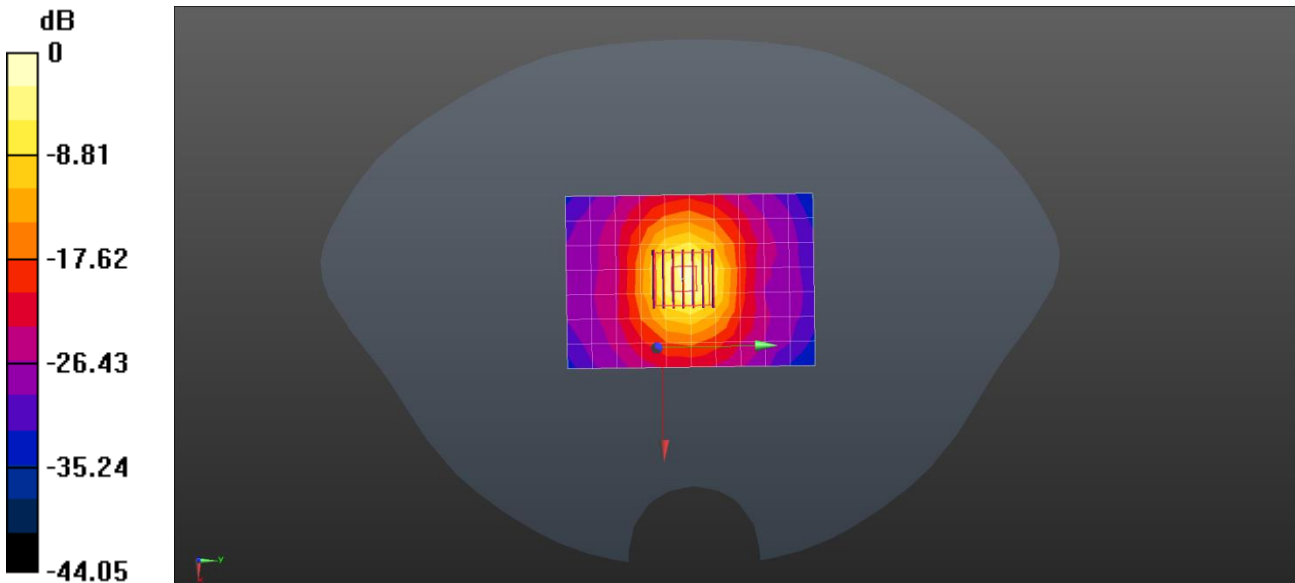
Body/d=10mm, Pin=100mW, f=5600 MHz/Zoom Scan (7x7x7)/Cube 0: Measurement grid: dx=4mm, dy=4mm, dz=1.4mm

Reference Value = 88.312 V/m; Power Drift = -0.17 dB

Peak SAR (extrapolated) = 57.2 W/kg

SAR(1 g) = 8.33 W/kg; SAR(10 g) = 2.41 W/kg

Maximum value of SAR (measured) = 34.8 W/kg



0 dB = 34.8 W/kg = 15.42 dBW/kg



SGS-CSTC Standards Technical Services Co., Ltd. Shenzhen Branch

SZEMC-TRF-01 Rev. A/0 Aug01,2022

Report No.: SZCR230200035201

Page: 106 of 148

Date: 2023/4/21

Test Laboratory: SGS-CSTC Standards Technical Services Co., Ltd., Shenzhen Branch

System Performance Check 5.75GHz

DUT: Dipole D5GHzV2; Type: D5GHzV2; Serial: 1042

Communication System: CW (0); Frequency: 5750 MHz; Duty Cycle: 1:1

Medium parameters used: $f = 5750$ MHz; $\sigma = 5.229$ S/m; $\epsilon_r = 34.406$; $\rho = 1000$ kg/m³

Phantom section: Flat Section

Measurement Standard: DASY5 (IEEE/IEC/ANSI C63.19-2007)

DASY5 Configuration:

- Probe: EX3DV4 - SN3836; ConvF(4.78, 4.78, 4.78); Calibrated: 2022/6/27;
- Sensor-Surface: 1.4mm (Mechanical Surface Detection)
- Electronics: DAE4 Sn760; Calibrated: 2022/6/6
- Phantom: SAM2; Type: QD000P40CD; Serial: TP:1673
- Measurement SW: DASY52, Version 52.8 (4); SEMCAD X Version 14.6.8 (7028)

Body/d=10mm, Pin=100mW, f=5750 MHz/Area Scan (8x11x1): Measurement grid: dx=10mm, dy=10mm

Maximum value of SAR (measured) = 26.8 W/kg

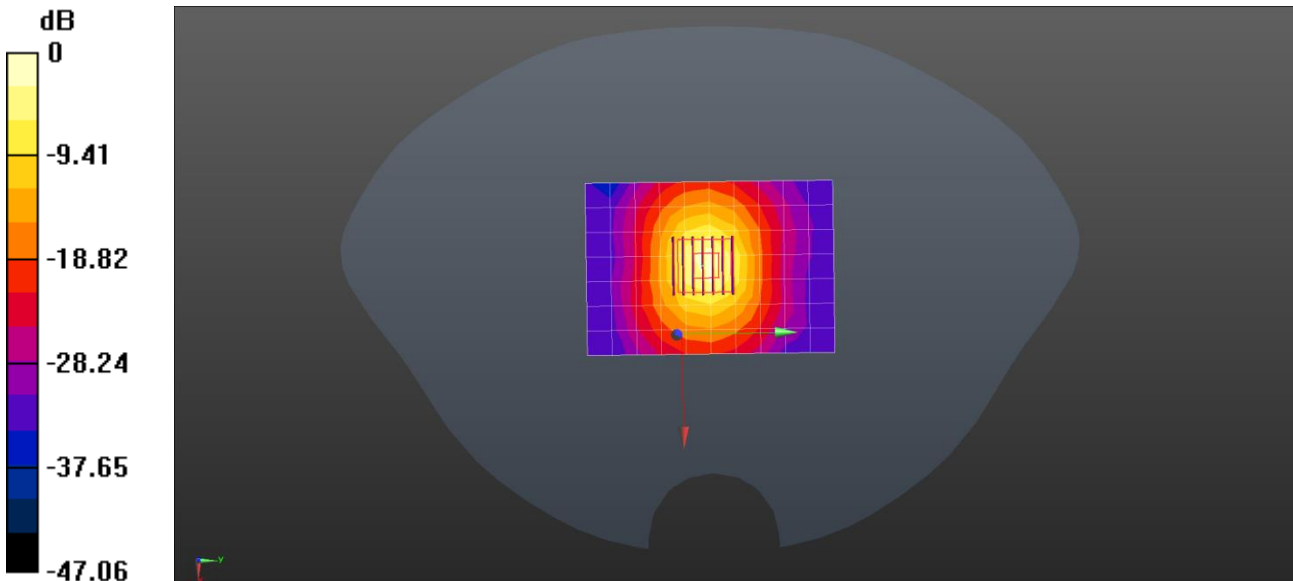
Body/d=10mm, Pin=100mW, f=5750 MHz/Zoom Scan (7x7x7)/Cube 0: Measurement grid: dx=4mm, dy=4mm, dz=1.4mm

Reference Value = 84.473 V/m; Power Drift = -0.12 dB

Peak SAR (extrapolated) = 56.7 W/kg

SAR(1 g) = 8.14 W/kg; SAR(10 g) = 2.33 W/kg

Maximum value of SAR (measured) = 32.9 W/kg



0 dB = 32.9 W/kg = 15.17 dBW/kg



SGS-CSTC Standards Technical Services Co., Ltd.
Shenzhen Branch

Unless otherwise agreed in writing, this document is issued by the Company subject to its General Conditions of Service printed overleaf, available on request or accessible at <https://www.sgs.com/en/Terms-and-Conditions>. Attention is drawn to the limitation of liability, indemnification and jurisdiction issues defined therein. Any holder of this document is advised that information contained hereon reflects the Company's findings at the time of its intervention only and within the limits of Client's instructions, if any. The Company's sole responsibility is to its Client and this document does not exonerate parties to a transaction from exercising all their rights and obligations under the transaction documents. This document cannot be reproduced except in full, without prior written approval of the Company. Any unauthorized alteration, forgery or falsification of the content or appearance of this document is unlawful and offenders may be prosecuted to the fullest extent of the law. Unless otherwise stated the results shown in this test report refer only to the sample(s) tested and such sample(s) are retained for 30 days only.
Attention: To check the authenticity of testing /inspection report & certificate, please contact us at telephone: (86-755) 83071443, or email: CN.Doccheck@sgs.com

No.1 Workshop, M-10, Middle Section, Science & Technology Park, Nanshan District, Shenzhen, Guangdong, China 518057 t (86-755) 26012053 f (86-755) 26710594 www.sgs.com.cn
中国·广东·深圳市南山区科技园中区M-10栋1号厂房 邮编: 518057 t (86-755) 26012053 f (86-755) 26710594 sgs.china@sgs.com

Appendix B: Detailed Test Results



SGS-CSTC Standards Technical Services Co., Ltd.
Shenzhen Branch Technical Services Laboratory

Unless otherwise agreed in writing, this document is issued by the Company subject to its General Conditions of Service printed overleaf, available on request or accessible at <https://www.sgs.com/en/Terms-and-Conditions>. Attention is drawn to the limitation of liability, indemnification and jurisdiction issues defined therein. Any holder of this document is advised that information contained hereon reflects the Company's findings at the time of its intervention only and within the limits of Client's instructions, if any. The Company's sole responsibility is to its Client and this document does not exonerate parties to a transaction from exercising all their rights and obligations under the transaction documents. This document cannot be reproduced except in full, without prior written approval of the Company. Any unauthorized alteration, forgery or falsification of the content or appearance of this document is unlawful and offenders may be prosecuted to the fullest extent of the law. Unless otherwise stated the results shown in this test report refer only to the sample(s) tested and such sample(s) are retained for 30 days only.

Attention: To check the authenticity of testing /inspection report & certificate, please contact us at telephone: (86-755) 83071443, or email: CN.Doccheck@sgs.com

No.1 Workshop, M-10, Middle Section, Science & Technology Park, Nanshan District, Shenzhen, Guangdong, China 518057 t (86-755) 26012053 f (86-755) 26710594 www.sgs.com.cn
中国·广东·深圳市南山区科技园中区M-10栋1号厂房 邮编: 518057 t (86-755) 26012053 f (86-755) 26710594 sgs.china@sgs.com

Test Laboratory: SGS-CSTC Standards Technical Services Co., Ltd. Shenzhen Branch

LTE Band 2 20M_QPSK 1RB_0 Back side 10mm Ch18900

DUT: A6650; Type: Smart Handheld Computer;

Communication System: Generic LTE; Frequency: 1880 MHz; Duty Cycle: 1:1

Medium parameters used: $f = 1880$ MHz; $\sigma = 1.417$ S/m; $\epsilon_r = 40.165$; $\rho = 1000$ kg/m³

Phantom section: Flat Section

Measurement Standard: DASY5 (IEEE/IEC/ANSI C63.19-2007)

DASY5 Configuration:

- Probe: EX3DV4 - SN3836; ConvF(7.65, 7.65, 7.65); Calibrated: 2022/6/27;
- Sensor-Surface: 3mm (Mechanical Surface Detection)
- Electronics: DAE4 Sn760; Calibrated: 2022/6/6
- Phantom: SAM1; Type: QD000P40CD; Serial: TP:1673
- Measurement SW: DASY52, Version 52.8 (4); SEMCAD X Version 14.6.8 (7028)

Body/Area Scan (8x15x1): Measurement grid: dx=15mm, dy=15mm

Maximum value of SAR (measured) = 0.257 W/kg

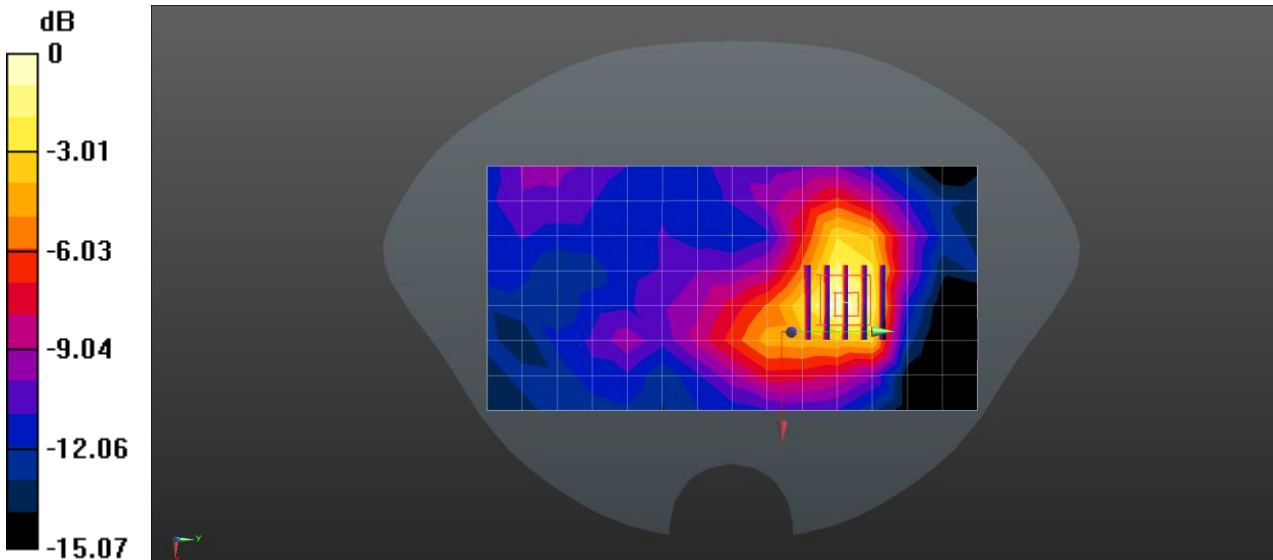
Body/Zoom Scan (5x5x7)/Cube 0: Measurement grid: dx=8mm, dy=8mm, dz=5mm

Reference Value = 4.874 V/m; Power Drift = 0.03 dB

Peak SAR (extrapolated) = 0.350 W/kg

SAR(1 g) = 0.213 W/kg; SAR(10 g) = 0.113 W/kg

Maximum value of SAR (measured) = 0.260 W/kg



0 dB = 0.260 W/kg = -5.85 dBW/kg



Test Laboratory: SGS-CSTC Standards Technical Services Co., Ltd. Shenzhen Branch

LTE Band 2 20M_QPSK 1RB_0 Right Side 0mm Ch18900

DUT: A6650; Type: Smart Handheld Computer;

Communication System: Generic LTE; Frequency: 1880 MHz; Duty Cycle: 1:1

Medium parameters used (interpolated): $f = 1880$ MHz; $\sigma = 1.417$ S/m; $\epsilon_r = 40.165$; $\rho = 1000$ kg/m³

Phantom section: Flat Section

Measurement Standard: DASYS (IEEE/IEC/ANSI C63.19-2007)

DASY5 Configuration:

- Probe: EX3DV4 - SN3836; ConvF(7.65, 7.65, 7.65); Calibrated: 2022/6/27;
- Sensor-Surface: 3mm (Mechanical Surface Detection)
- Electronics: DAE4 Sn760; Calibrated: 2022/6/6
- Phantom: SAM1; Type: QD000P40CD; Serial: TP:1673
- Measurement SW: DASY52, Version 52.8 (4); SEMCAD X Version 14.6.8 (7028)

Body/Area Scan (6x15x1): Measurement grid: dx=15mm, dy=15mm

Maximum value of SAR (measured) = 0.952 W/kg

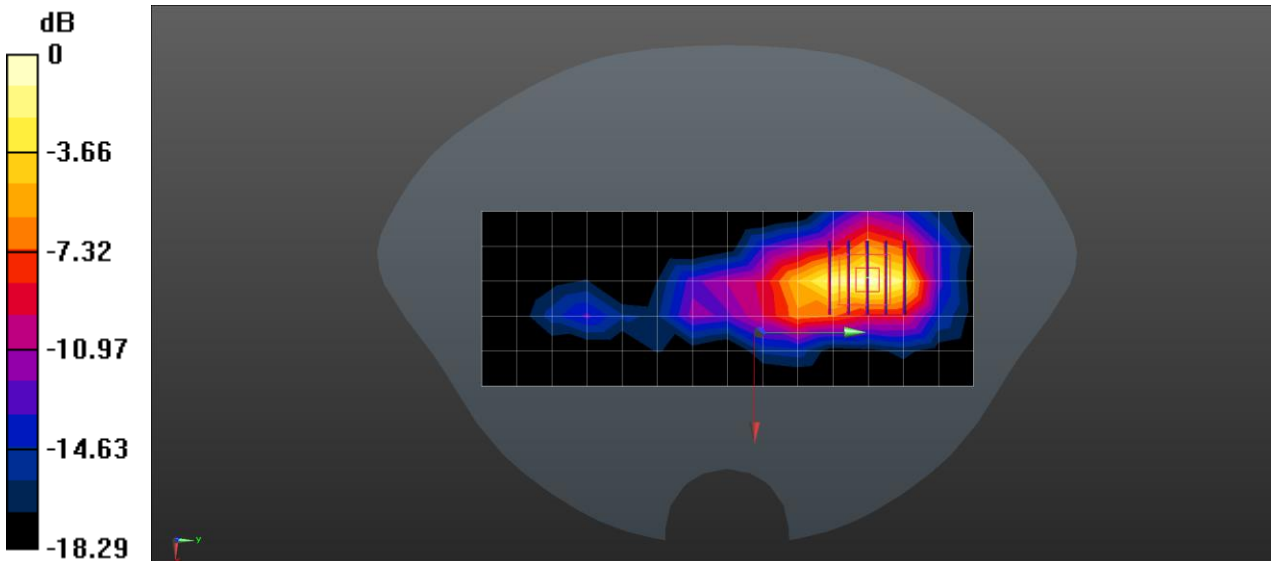
Body/Zoom Scan (5x5x7)/Cube 0: Measurement grid: dx=8mm, dy=8mm, dz=5mm

Reference Value = 8.962 V/m; Power Drift = -0.04 dB

Peak SAR (extrapolated) = 1.43 W/kg

SAR(1 g) = 0.703 W/kg; SAR(10 g) = 0.337 W/kg

Maximum value of SAR (measured) = 0.999 W/kg



0 dB = 0.999 W/kg = -0.00 dBW/kg



Date: 2023/5/4

Test Laboratory: SGS-CSTC Standards Technical Services Co., Ltd. Shenzhen Branch

LTE Band 4 20M_QPSK 1RB_50 Back side 10mm Ch20175

DUT: A6650; Type: Smart Handheld Computer;

Communication System: Generic LTE; Frequency: 1732.5 MHz; Duty Cycle: 1:1

Medium parameters used (interpolated): $f = 1732.5$ MHz; $\sigma = 1.357$ S/m; $\epsilon_r = 40.374$; $\rho = 1000$ kg/m³

Phantom section: Flat Section

Measurement Standard: DASYS (IEEE/IEC/ANSI C63.19-2007)

DASY5 Configuration:

- Probe: EX3DV4 - SN3836; ConvF(8.02, 8.02, 8.02); Calibrated: 2022/6/27;
- Sensor-Surface: 3mm (Mechanical Surface Detection)
- Electronics: DAE4 Sn760; Calibrated: 2022/6/6
- Phantom: SAM1; Type: QD000P40CD; Serial: TP:1673
- Measurement SW: DASY52, Version 52.8 (4); SEMCAD X Version 14.6.8 (7028)

Body/Area Scan (8x15x1): Measurement grid: dx=15mm, dy=15mm

Maximum value of SAR (measured) = 0.658 W/kg

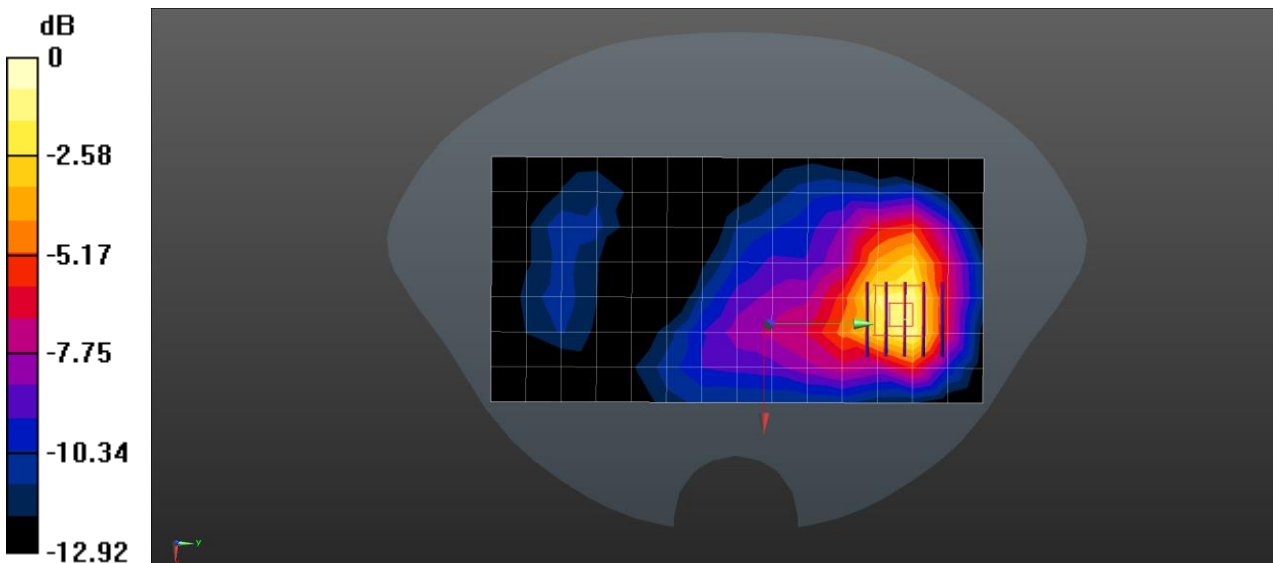
Body/Zoom Scan (5x5x7)/Cube 0: Measurement grid: dx=8mm, dy=8mm, dz=5mm

Reference Value = 8.841 V/m; Power Drift = -0.16 dB

Peak SAR (extrapolated) = 1.16 W/kg

SAR(1 g) = 0.670 W/kg; SAR(10 g) = 0.383 W/kg

Maximum value of SAR (measured) = 0.821 W/kg



0 dB = 0.821 W/kg = -0.86 dBW/kg

Date: 2023/5/4

Test Laboratory: SGS-CSTC Standards Technical Services Co., Ltd. Shenzhen Branch

LTE Band 4 20M_QPSK 1RB_50 Back side 0mm Ch20175

DUT: A6650; Type: Smart Handheld Computer;

Communication System: Generic LTE; Frequency: 1732.5 MHz; Duty Cycle: 1:1

Medium parameters used (interpolated): $f = 1732.5$ MHz; $\sigma = 1.357$ S/m; $\epsilon_r = 40.374$; $\rho = 1000$ kg/m³

Phantom section: Flat Section

Measurement Standard: DASYS (IEEE/IEC/ANSI C63.19-2007)

DASY5 Configuration:

- Probe: EX3DV4 - SN3836; ConvF(8.02, 8.02, 8.02); Calibrated: 2022/6/27;
- Sensor-Surface: 3mm (Mechanical Surface Detection)
- Electronics: DAE4 Sn760; Calibrated: 2022/6/6
- Phantom: SAM1; Type: QD00P40CD; Serial: TP:1673
- Measurement SW: DASYS2, Version 52.8 (4); SEMCAD X Version 14.6.8 (7028)

Body/Area Scan (8x15x1): Measurement grid: dx=15mm, dy=15mm

Maximum value of SAR (measured) = 2.35 W/kg

Body/Zoom Scan (5x5x7)/Cube 0: Measurement grid: dx=8mm, dy=8mm, dz=5mm

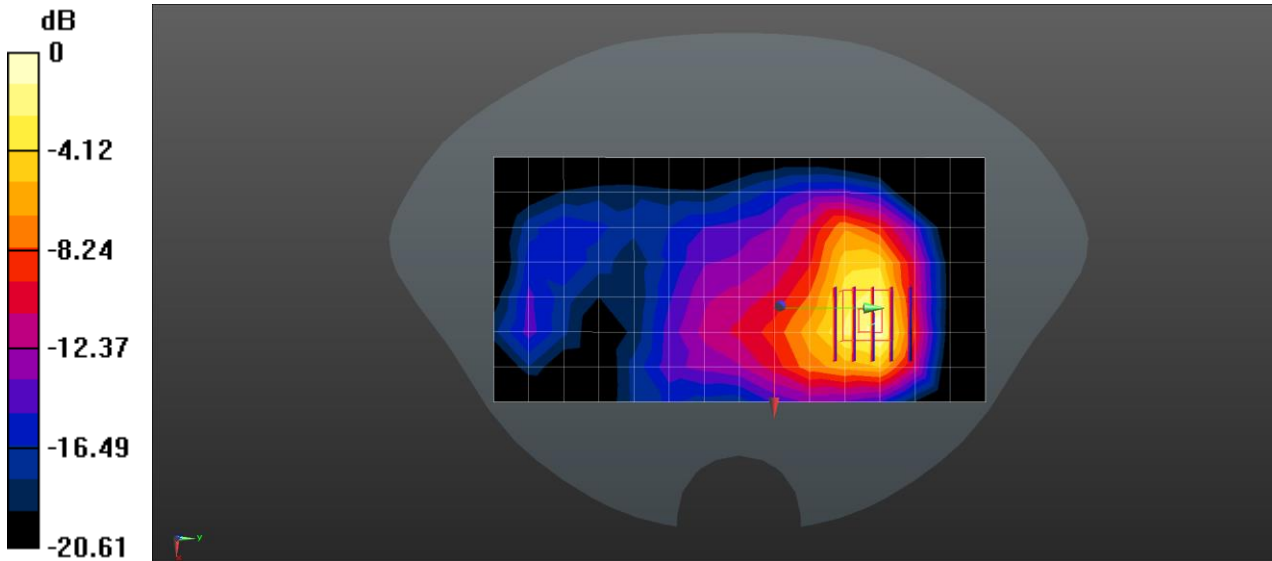
Reference Value = 10.533 V/m; Power Drift = -0.07 dB

Peak SAR (extrapolated) = 4.04 W/kg

SAR(1 g) = 2.05 W/kg; SAR(10 g) = 1.03 W/kg

Maximum value of SAR (measured) = 2.70 W/kg





0 dB = 2.70 W/kg = 4.31 dBW/kg

Date: 2023/4/27

Test Laboratory: SGS-CSTC Standards Technical Services Co., Ltd. Shenzhen Branch

LTE Band 5 10M_QPSK 1RB_0 Back side 10mm Ch20525

DUT: A6650; Type: Smart Handheld Computer;

Communication System: Generic LTE; Frequency: 836.5 MHz; Duty Cycle: 1:1

Medium parameters used: $f = 836.5$ MHz; $\sigma = 0.929$ S/m; $\epsilon_r = 42.255$; $\rho = 1000$ kg/m³

Phantom section: Flat Section

Measurement Standard: DASY5 (IEEE/IEC/ANSI C63.19-2007)

DASY5 Configuration:

- Probe: EX3DV4 - SN3836; ConvF(8.99, 8.99, 8.99); Calibrated: 2022/6/27;
- Sensor-Surface: 3mm (Mechanical Surface Detection)
- Electronics: DAE4 Sn760; Calibrated: 2022/6/6
- Phantom: SAM1; Type: QD000P40CD; Serial: TP:1673
- Measurement SW: DASY52, Version 52.8 (4); SEMCAD X Version 14.6.8 (7028)

Body/Area Scan (8x15x1): Measurement grid: dx=15mm, dy=15mm

Maximum value of SAR (measured) = 0.415 W/kg

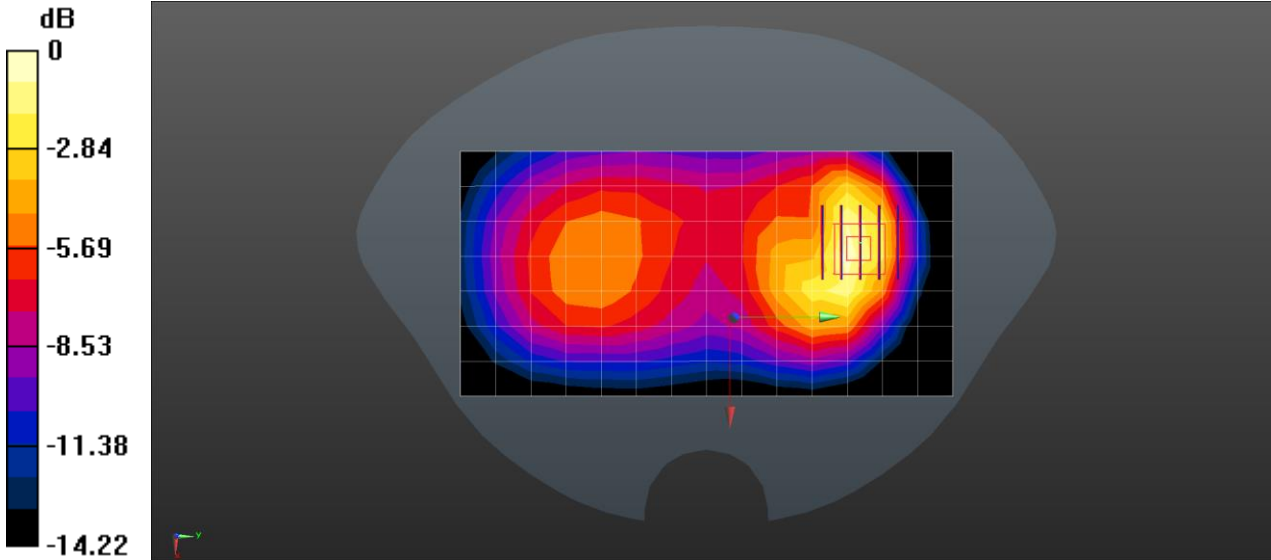
Body/Zoom Scan (5x5x7)/Cube 0: Measurement grid: dx=8mm, dy=8mm, dz=5mm

Reference Value = 9.041 V/m; Power Drift = 0.05 dB

Peak SAR (extrapolated) = 0.635 W/kg



SAR(1 g) = 0.361 W/kg; SAR(10 g) = 0.204 W/kg
 Maximum value of SAR (measured) = 0.451 W/kg



0 dB = 0.451 W/kg = -3.46 dBW/kg

Date: 2023/4/27

Test Laboratory: SGS-CSTC Standards Technical Services Co., Ltd. Shenzhen Branch

LTE Band 5 10M_QPSK 25RB_0 Back side 0mm Ch20450

DUT: A6650; Type: Smart Handheld Computer;

Communication System: Generic LTE; Frequency: 829 MHz; Duty Cycle: 1:1

Medium parameters used: $f = 829$ MHz; $\sigma = 0.931$ S/m; $\epsilon_r = 42.262$; $\rho = 1000$ kg/m³

Phantom section: Flat Section

Measurement Standard: DASY5 (IEEE/IEC/ANSI C63.19-2007)

DASY5 Configuration:

- Probe: EX3DV4 - SN3836; ConvF(8.99, 8.99, 8.99); Calibrated: 2022/6/27;
- Sensor-Surface: 3mm (Mechanical Surface Detection)
- Electronics: DAE4 Sn760; Calibrated: 2022/6/6
- Phantom: SAM1; Type: QD000P40CD; Serial: TP:1673
- Measurement SW: DASY52, Version 52.8 (4); SEMCAD X Version 14.6.8 (7028)

Body/Area Scan (8x15x1): Measurement grid: dx=15mm, dy=15mm

Maximum value of SAR (measured) = 1.10 W/kg

Body/Zoom Scan (5x5x7)/Cube 0: Measurement grid: dx=8mm, dy=8mm, dz=5mm

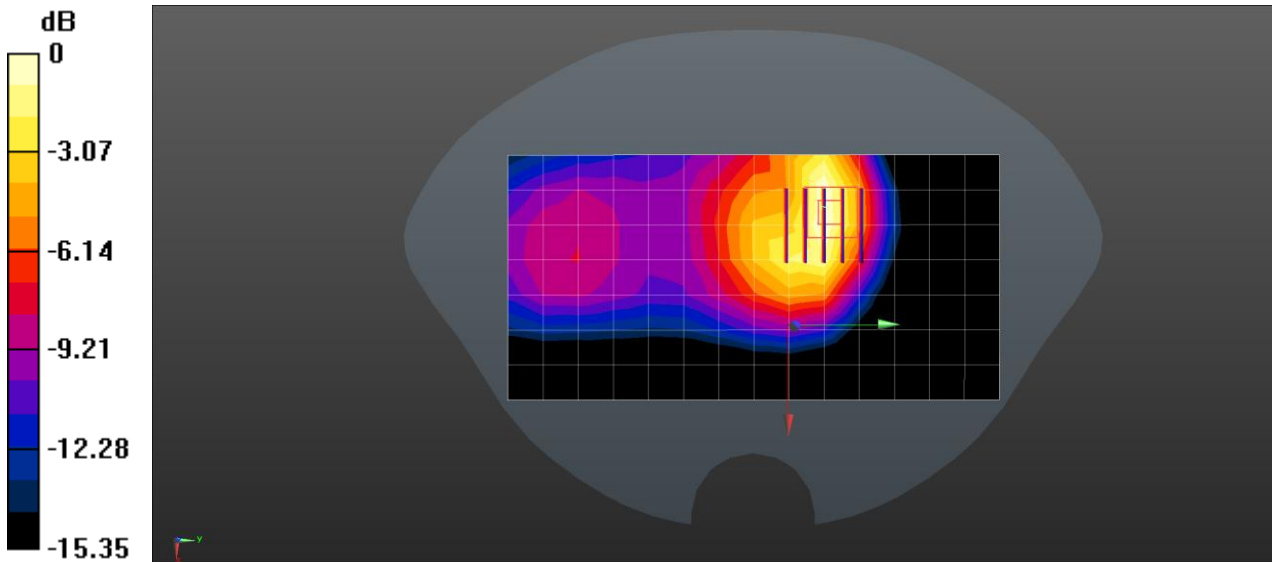
Reference Value = 19.283 V/m; Power Drift = 0.01 dB



Peak SAR (extrapolated) = 1.74 W/kg

SAR(1 g) = 0.871 W/kg; SAR(10 g) = 0.453 W/kg

Maximum value of SAR (measured) = 1.05 W/kg



0 dB = 1.05 W/kg = 0.21 dBW/kg

Date: 2023/4/22

Test Laboratory: SGS-CSTC Standards Technical Services Co., Ltd. Shenzhen Branch

LTE Band 7 20M_QPSK 50RB_0 Back side 10mm Ch20850

DUT: A6650; Type: Smart Handheld Computer;

Communication System: Generic LTE; Frequency: 2510 MHz; Duty Cycle: 1:1

Medium parameters used: $f = 2510$ MHz; $\sigma = 1.885$ S/m; $\epsilon_r = 39.214$; $\rho = 1000$ kg/m³

Phantom section: Flat Section

Measurement Standard: DASY5 (IEEE/IEC/ANSI C63.19-2007)

DASY5 Configuration:

- Probe: EX3DV4 - SN3836; ConvF(7.27, 7.27, 7.27); Calibrated: 2022/6/27;
- Sensor-Surface: 3mm (Mechanical Surface Detection)
- Electronics: DAE4 Sn760; Calibrated: 2022/6/6
- Phantom: SAM1; Type: QD000P40CD; Serial: TP:1673
- Measurement SW: DASY52, Version 52.8 (4); SEMCAD X Version 14.6.8 (7028)

Body/Area Scan (10x18x1): Measurement grid: dx=12mm, dy=12mm

Maximum value of SAR (measured) = 0.626 W/kg

Body/Zoom Scan (7x7x7)/Cube 0: Measurement grid: dx=5mm, dy=5mm, dz=5mm

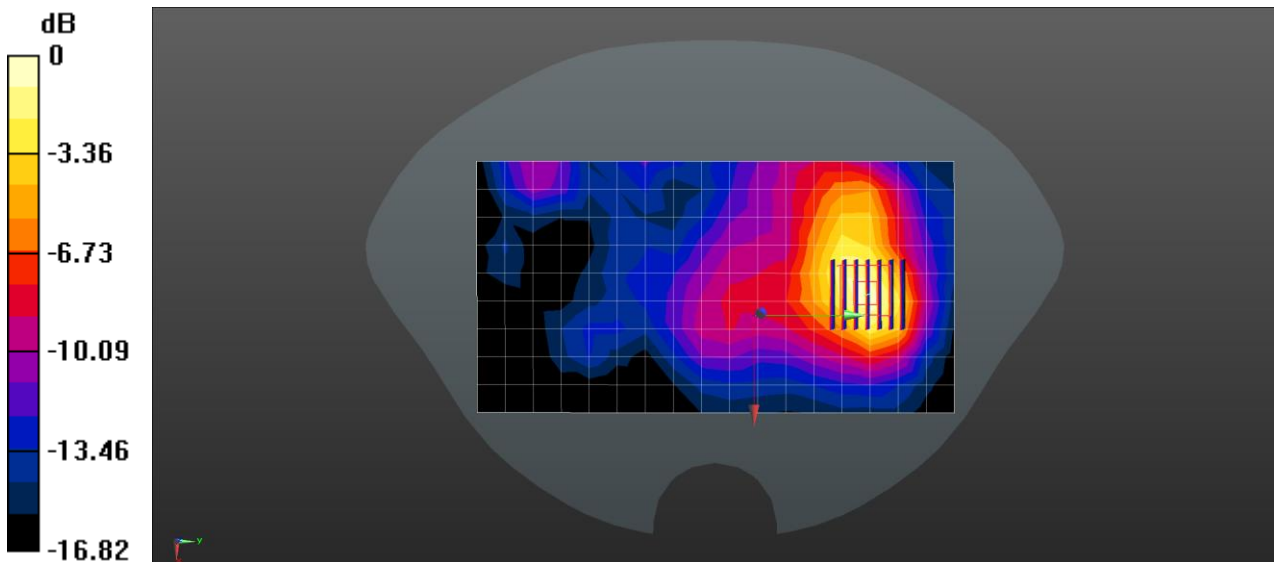


Reference Value = 6.294 V/m; Power Drift = 0.09 dB

Peak SAR (extrapolated) = 0.976 W/kg

SAR(1 g) = 0.486 W/kg; SAR(10 g) = 0.242 W/kg

Maximum value of SAR (measured) = 0.641 W/kg



0 dB = 0.641 W/kg = -1.93 dBW/kg

Date: 2023/4/22

Test Laboratory: SGS-CSTC Standards Technical Services Co., Ltd. Shenzhen Branch

LTE Band 7 20M_QPSK 50RB_0 Back side 0mm Ch20850

DUT: A6650; Type: Smart Handheld Computer;

Communication System: Generic LTE; Frequency: 2510 MHz; Duty Cycle: 1:1

Medium parameters used (interpolated): $f = 2510$ MHz; $\sigma = 1.885$ S/m; $\epsilon_r = 39.214$; $\rho = 1000$ kg/m³

Phantom section: Flat Section

Measurement Standard: DASYS (IEEE/IEC/ANSI C63.19-2007)

DASY5 Configuration:

- Probe: EX3DV4 - SN3836; ConvF(7.27, 7.27, 7.27); Calibrated: 2022/6/27;
- Sensor-Surface: 3mm (Mechanical Surface Detection)
- Electronics: DAE4 Sn760; Calibrated: 2022/6/6
- Phantom: SAM1; Type: QD000P40CD; Serial: TP:1673
- Measurement SW: DASY52, Version 52.8 (4); SEMCAD X Version 14.6.8 (7028)

Body/Area Scan (10x18x1): Measurement grid: dx=12mm, dy=12mm

Maximum value of SAR (measured) = 1.81 W/kg



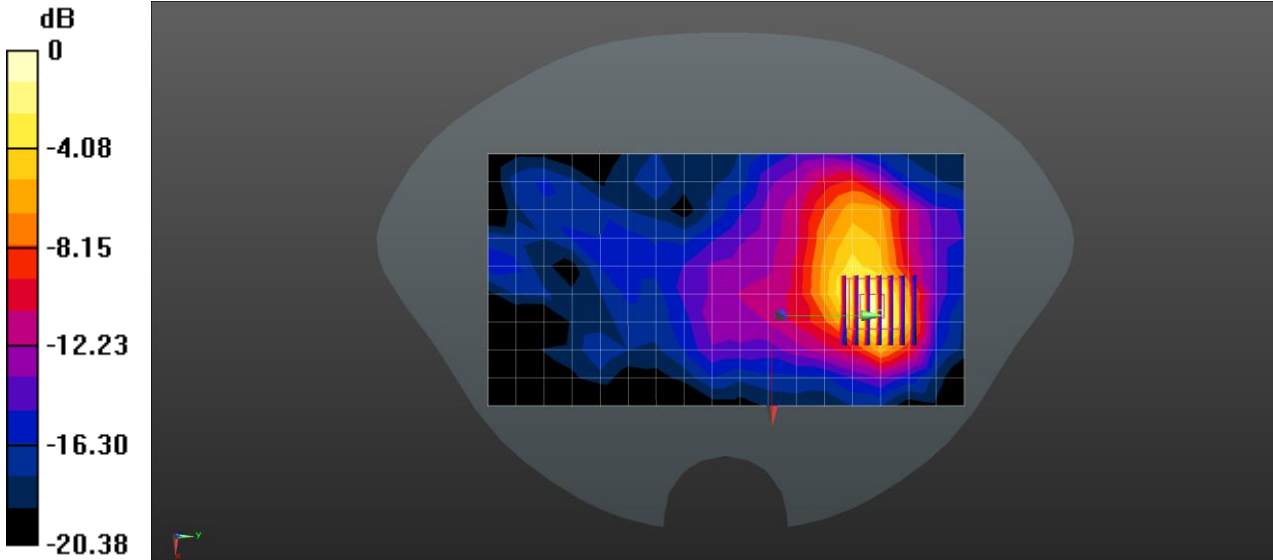
Body/Zoom Scan (7x7x7)/Cube 0: Measurement grid: dx=5mm, dy=5mm, dz=5mm

Reference Value = 6.226 V/m; Power Drift = 0.08 dB

Peak SAR (extrapolated) = 3.26 W/kg

SAR(1 g) = 1.45 W/kg; SAR(10 g) = 0.716 W/kg

Maximum value of SAR (measured) = 2.05 W/kg



0 dB = 2.05 W/kg = 3.12 dBW/kg

Date: 2023/4/24

Test Laboratory: SGS-CSTC Standards Technical Services Co., Ltd. Shenzhen Branch

LTE Band 12 10M_QPSK 1RB_0 Back side 10mm Ch23060

DUT: A6650; Type: Smart Handheld Computer;

Communication System: Generic LTE; Frequency: 704 MHz; Duty Cycle: 1:1

Medium parameters used: f = 704 MHz; $\sigma = 0.909$ S/m; $\epsilon_r = 42.653$; $\rho = 1000$ kg/m³

Phantom section: Flat Section

Measurement Standard: DASYS (IEEE/IEC/ANSI C63.19-2007)

DASY5 Configuration:

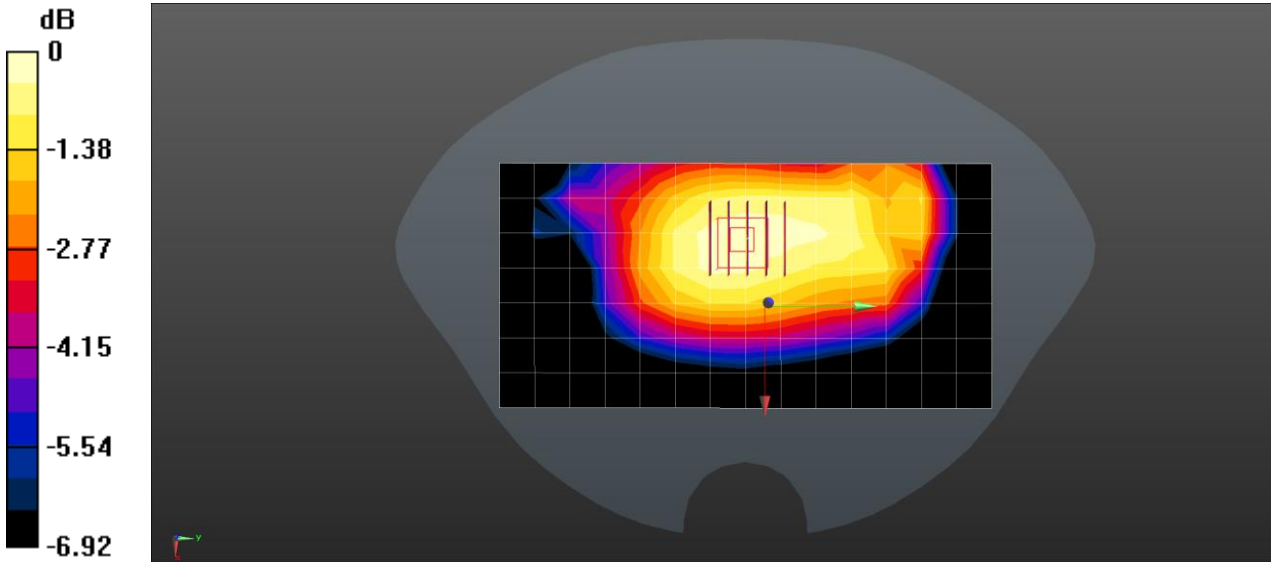
- Probe: EX3DV4 - SN3836; ConvF(9.28, 9.28, 9.28); Calibrated: 2022/6/27;
- Sensor-Surface: 3mm (Mechanical Surface Detection)
- Electronics: DAE4 Sn760; Calibrated: 2022/6/6
- Phantom: SAM1; Type: QD000P40CD; Serial: TP:1673
- Measurement SW: DASY52, Version 52.8 (4); SEMCAD X Version 14.6.8 (7028)

Body/Area Scan (8x15x1): Measurement grid: dx=15mm, dy=15mm

Maximum value of SAR (measured) = 0.152 W/kg



Body/Zoom Scan (5x5x7)/Cube 0: Measurement grid: dx=8mm, dy=8mm, dz=5mm
 Reference Value = 12.651 V/m; Power Drift = -0.02 dB
 Peak SAR (extrapolated) = 0.175 W/kg
SAR(1 g) = 0.140 W/kg; SAR(10 g) = 0.110 W/kg
 Maximum value of SAR (measured) = 0.153 W/kg



0 dB = 0.153 W/kg = -8.15 dBW/kg

Date: 2023/4/24

Test Laboratory: SGS-CSTC Standards Technical Services Co., Ltd. Shenzhen Branch

LTE Band 12 10M_QPSK 1RB_0 Back side 0mm Ch23060

DUT: A6650; Type: Smart Handheld Computer;

Communication System: Generic LTE; Frequency: 704 MHz; Duty Cycle: 1:1

Medium parameters used (interpolated): f = 704 MHz; $\sigma = 0.912$ S/m; $\epsilon_r = 42.658$; $\rho = 1000$ kg/m³

Phantom section: Flat Section

Measurement Standard: DASY5 (IEEE/IEC/ANSI C63.19-2007)

DASY5 Configuration:

- Probe: EX3DV4 - SN3836; ConvF(9.28, 9.28, 9.28); Calibrated: 2022/6/27;
- Sensor-Surface: 3mm (Mechanical Surface Detection)
- Electronics: DAE4 Sn760; Calibrated: 2022/6/6
- Phantom: SAM1; Type: QD000P40CD; Serial: TP:1673
- Measurement SW: DASY52, Version 52.8 (4); SEMCAD X Version 14.6.8 (7028)

Body/Area Scan (8x15x1): Measurement grid: dx=15mm, dy=15mm



Unless otherwise agreed in writing, this document is issued by the Company subject to its General Conditions of Service printed overleaf, available on request or accessible at <https://www.sgs.com/en/Terms-and-Conditions>. Attention is drawn to the limitation of liability, indemnification and jurisdiction issues defined therein. Any holder of this document is advised that information contained hereon reflects the Company's findings at the time of its intervention only and within the limits of Client's instructions, if any. The Company's sole responsibility is to its Client and this document does not exonerate parties to a transaction from exercising all their rights and obligations under the transaction documents. This document cannot be reproduced except in full, without prior written approval of the Company. Any unauthorized alteration, forgery or falsification of the content or appearance of this document is unlawful and offenders may be prosecuted to the fullest extent of the law. Unless otherwise stated the results shown in this test report refer only to the sample(s) tested and such sample(s) are retained for 30 days only.
Attention: To check the authenticity of testing /inspection report & certificate, please contact us at telephone: (86-755) 83071443, or email: CN.Doccheck@sgs.com

SGS-CSTC Standards Technical Services Co., Ltd.
 Shenzhen Branch

No.1 Workshop, M-10, Middle Section, Science & Technology Park, Nanshan District, Shenzhen, Guangdong, China 518057 t (86-755) 26012053 f (86-755) 26710594 www.sgs.com.cn
 中国·广东·深圳市南山区科技园中区M-10栋1号厂房 邮编: 518057 t (86-755) 26012053 f (86-755) 26710594 sgs.china@sgs.com

Maximum value of SAR (measured) = 0.543 W/kg

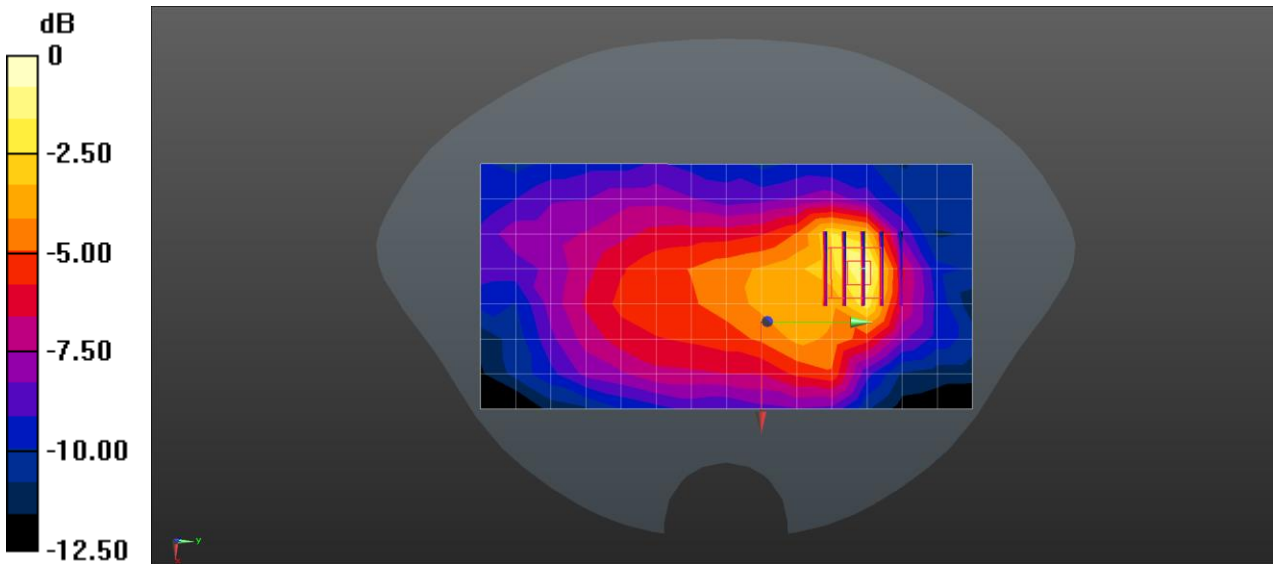
Body/Zoom Scan (5x5x7)/Cube 0: Measurement grid: dx=8mm, dy=8mm, dz=5mm

Reference Value = 15.469 V/m; Power Drift = -0.10 dB

Peak SAR (extrapolated) = 1.09 W/kg

SAR(1 g) = 0.487 W/kg; SAR(10 g) = 0.273 W/kg

Maximum value of SAR (measured) = 0.631 W/kg



0 dB = 0.631 W/kg = -2.00 dBW/kg

Date: 2023/4/24

Test Laboratory: SGS-CSTC Standards Technical Services Co., Ltd. Shenzhen Branch

LTE Band 13 10M_QPSK 1RB_0 Back side 10mm Ch23230

DUT: A6650; Type: Smart Handheld Computer;

Communication System: Generic LTE; Frequency: 782 MHz; Duty Cycle: 1:1

Medium parameters used (interpolated): $f = 782$ MHz; $\sigma = 0.917$ S/m; $\epsilon_r = 42.395$; $\rho = 1000$ kg/m³

Phantom section: Flat Section

Measurement Standard: DASY5 (IEEE/IEC/ANSI C63.19-2007)

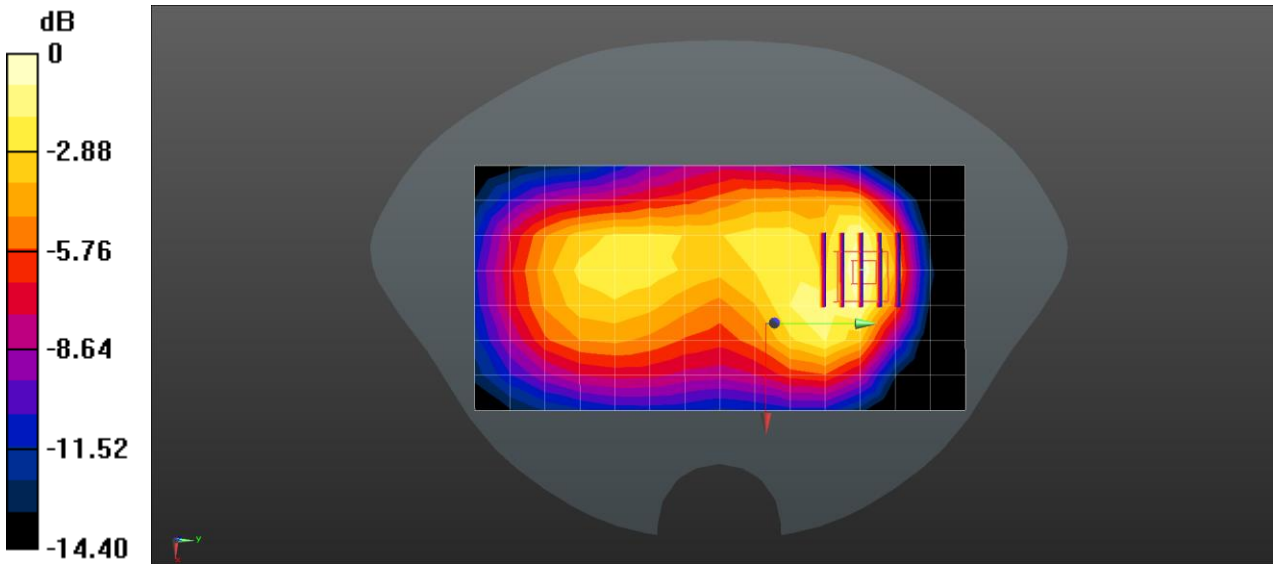
DASY5 Configuration:

- Probe: EX3DV4 - SN3836; ConvF(9.28, 9.28, 9.28); Calibrated: 2022/6/27;
- Sensor-Surface: 3mm (Mechanical Surface Detection)
- Electronics: DAE4 Sn760; Calibrated: 2022/6/6
- Phantom: SAM1; Type: QD000P40CD; Serial: TP:1673
- Measurement SW: DASY52, Version 52.8 (4); SEMCAD X Version 14.6.8 (7028)



Body/Area Scan (8x15x1): Measurement grid: dx=15mm, dy=15mm
Maximum value of SAR (measured) = 0.265 W/kg

Body/Zoom Scan (5x5x7)/Cube 0: Measurement grid: dx=8mm, dy=8mm, dz=5mm
Reference Value = 10.157 V/m; Power Drift = 0.10 dB
Peak SAR (extrapolated) = 0.363 W/kg
SAR(1 g) = 0.210 W/kg; SAR(10 g) = 0.121 W/kg
Maximum value of SAR (measured) = 0.255 W/kg



0 dB = 0.255 W/kg = -5.93 dBW/kg

Date: 2023/4/24

Test Laboratory: SGS-CSTC Standards Technical Services Co., Ltd. Shenzhen Branch

LTE Band 13 10M_QPSK 25RB_0 Back side 0mm Ch23230

DUT: A6650; Type: Smart Handheld Computer;

Communication System: Generic LTE; Frequency: 782 MHz; Duty Cycle: 1:1

Medium parameters used (interpolated): $f = 782 \text{ MHz}$; $\sigma = 0.917 \text{ S/m}$; $\epsilon_r = 42.395$; $\rho = 1000 \text{ kg/m}^3$

Phantom section: Flat Section

Measurement Standard: DASY5 (IEEE/IEC/ANSI C63.19-2007)

DASY5 Configuration:

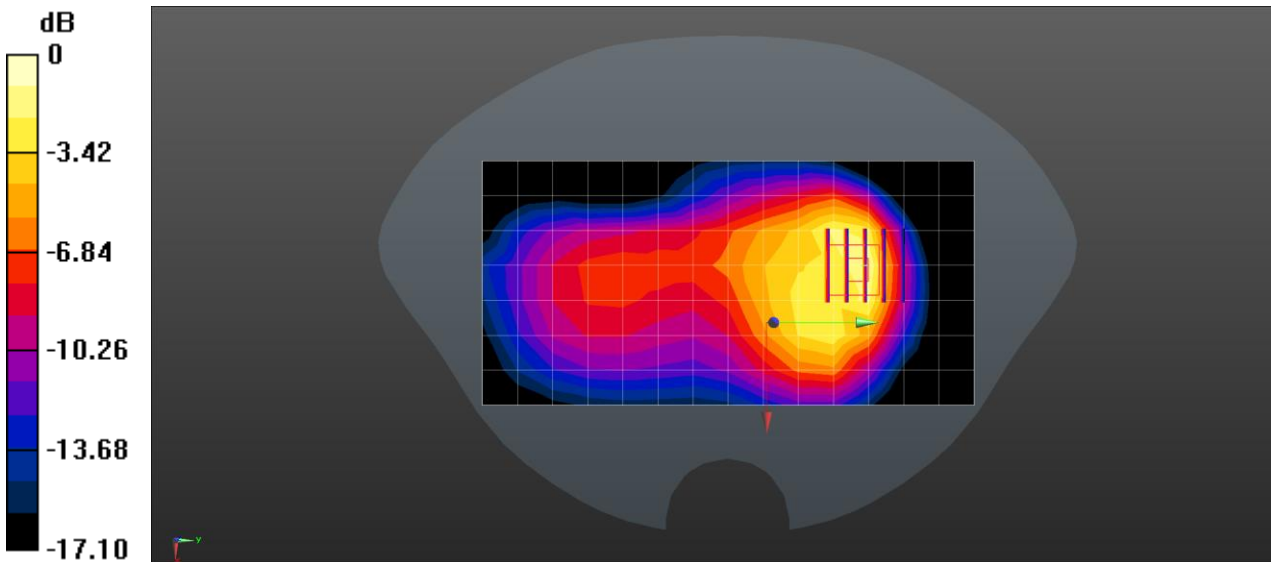
- Probe: EX3DV4 - SN3836; ConvF(9.28, 9.28, 9.28); Calibrated: 2022/6/27;
- Sensor-Surface: 3mm (Mechanical Surface Detection)
- Electronics: DAE4 Sn760; Calibrated: 2022/6/6
- Phantom: SAM1; Type: QD00P40CD; Serial: TP:1673



- Measurement SW: DASY52, Version 52.8 (4); SEMCAD X Version 14.6.8 (7028)

Body/Area Scan (8x15x1): Measurement grid: dx=15mm, dy=15mm
Maximum value of SAR (measured) = 0.858 W/kg

Body/Zoom Scan (5x5x7)/Cube 0: Measurement grid: dx=8mm, dy=8mm, dz=5mm
Reference Value = 15.732 V/m; Power Drift = 0.08 dB
Peak SAR (extrapolated) = 1.76 W/kg
SAR(1 g) = 0.831 W/kg; SAR(10 g) = 0.432 W/kg
Maximum value of SAR (measured) = 1.09 W/kg



0 dB = 1.09 W/kg = 0.37 dBW/kg

Date: 2023/4/24

Test Laboratory: SGS-CSTC Standards Technical Services Co., Ltd. Shenzhen Branch

LTE Band 14 10M_QPSK 1RB_0 Back side 10mm Ch23330

DUT: A6650; Type: Smart Handheld Computer;

Communication System: Generic LTE; Frequency: 793 MHz; Duty Cycle: 1:1

Medium parameters used (interpolated): $f = 793 \text{ MHz}$; $\sigma = 0.92 \text{ S/m}$; $\epsilon_r = 42.359$; $\rho = 1000 \text{ kg/m}^3$

Phantom section: Flat Section

Measurement Standard: DASY5 (IEEE/IEC/ANSI C63.19-2007)

DASY5 Configuration:

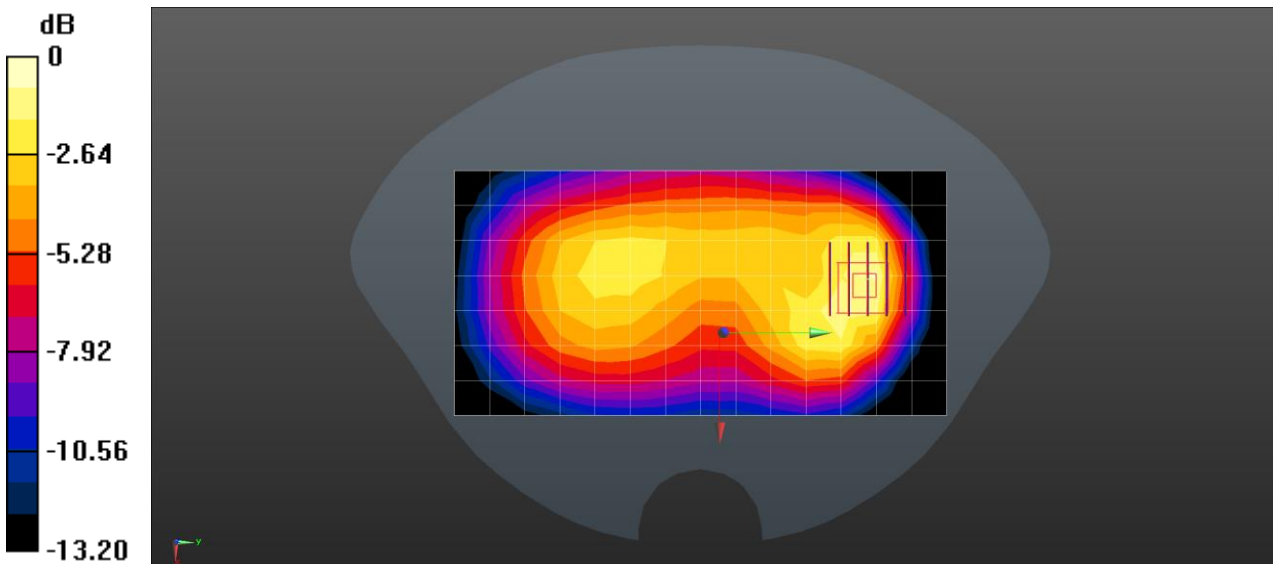
- Probe: EX3DV4 - SN3836; ConvF(9.28, 9.28, 9.28); Calibrated: 2022/6/27;
- Sensor-Surface: 3mm (Mechanical Surface Detection)
- Electronics: DAE4 Sn760; Calibrated: 2022/6/6



- Phantom: SAM1; Type: QD000P40CD; Serial: TP:1673
- Measurement SW: DASY52, Version 52.8 (4); SEMCAD X Version 14.6.8 (7028)

Body/Area Scan (8x15x1): Measurement grid: dx=15mm, dy=15mm
Maximum value of SAR (measured) = 0.216 W/kg

Body/Zoom Scan (5x5x7)/Cube 0: Measurement grid: dx=8mm, dy=8mm, dz=5mm
Reference Value = 10.428 V/m; Power Drift = 0.10 dB
Peak SAR (extrapolated) = 0.351 W/kg
SAR(1 g) = 0.208 W/kg; SAR(10 g) = 0.123 W/kg
Maximum value of SAR (measured) = 0.253 W/kg



0 dB = 0.253 W/kg = -5.97 dBW/kg

Date: 2023/4/24

Test Laboratory: SGS-CSTC Standards Technical Services Co., Ltd. Shenzhen Branch

LTE Band 14 10M_QPSK 1RB_0 Back side 0mm Ch23330

DUT: A6650; Type: Smart Handheld Computer;

Communication System: Generic LTE; Frequency: 793 MHz; Duty Cycle: 1:1

Medium parameters used (interpolated): $f = 793 \text{ MHz}$; $\sigma = 0.92 \text{ S/m}$; $\epsilon_r = 42.359$; $\rho = 1000 \text{ kg/m}^3$

Phantom section: Flat Section

Measurement Standard: DASY5 (IEEE/IEC/ANSI C63.19-2007)

DASY5 Configuration:

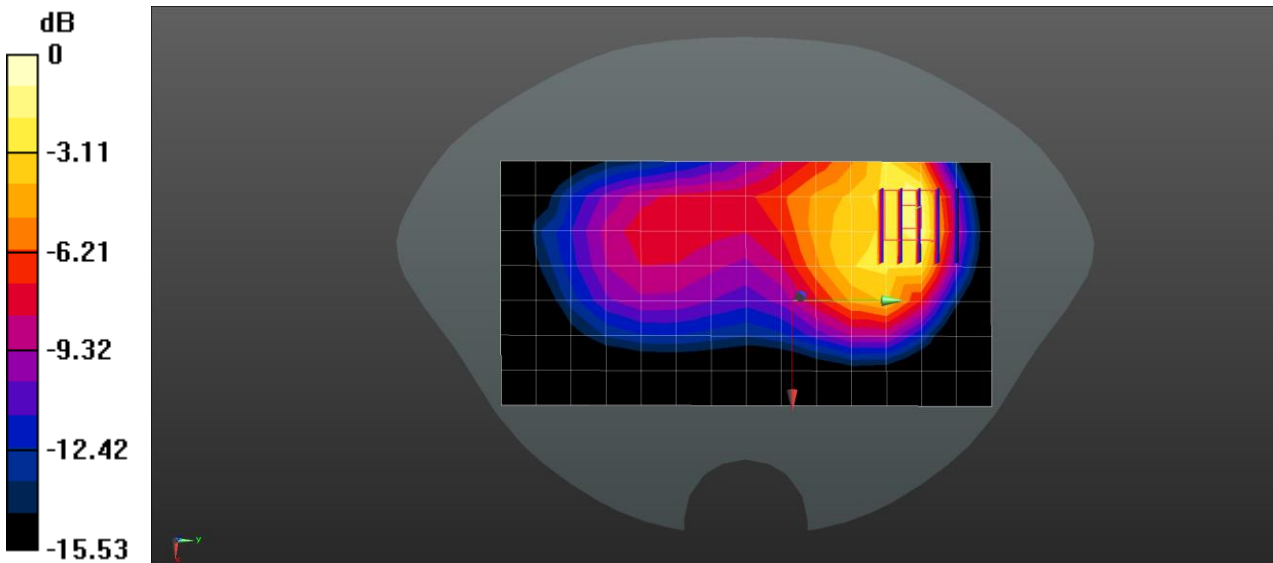
- Probe: EX3DV4 - SN3836; ConvF(9.28, 9.28, 9.28); Calibrated: 2022/6/27;
- Sensor-Surface: 3mm (Mechanical Surface Detection)



- Electronics: DAE4 Sn760; Calibrated: 2022/6/6
- Phantom: SAM1; Type: QD000P40CD; Serial: TP:1673
- Measurement SW: DASY52, Version 52.8 (4); SEMCAD X Version 14.6.8 (7028)

Body/Area Scan (8x15x1): Measurement grid: dx=15mm, dy=15mm
Maximum value of SAR (measured) = 0.841 W/kg

Body/Zoom Scan (5x5x7)/Cube 0: Measurement grid: dx=8mm, dy=8mm, dz=5mm
Reference Value = 10.682 V/m; Power Drift = 0.04 dB
Peak SAR (extrapolated) = 1.76 W/kg
SAR(1 g) = 0.864 W/kg; SAR(10 g) = 0.458 W/kg
Maximum value of SAR (measured) = 1.08 W/kg



0 dB = 1.08 W/kg = 0.33 dBW/kg

Date: 2023/4/24

Test Laboratory: SGS-CSTC Standards Technical Services Co., Ltd. Shenzhen Branch

LTE Band 17 10M_QPSK 1RB_0 Back side 10mm Ch23800

DUT: A6650; Type: Smart Handheld Computer;

Communication System: Generic LTE; Frequency: 711 MHz; Duty Cycle: 1:1

Medium parameters used (interpolated): $f = 711 \text{ MHz}$; $\sigma = 0.909 \text{ S/m}$; $\epsilon_r = 42.642$; $\rho = 1000 \text{ kg/m}^3$

Phantom section: Flat Section

Measurement Standard: DASY5 (IEEE/IEC/ANSI C63.19-2007)

DASY5 Configuration:

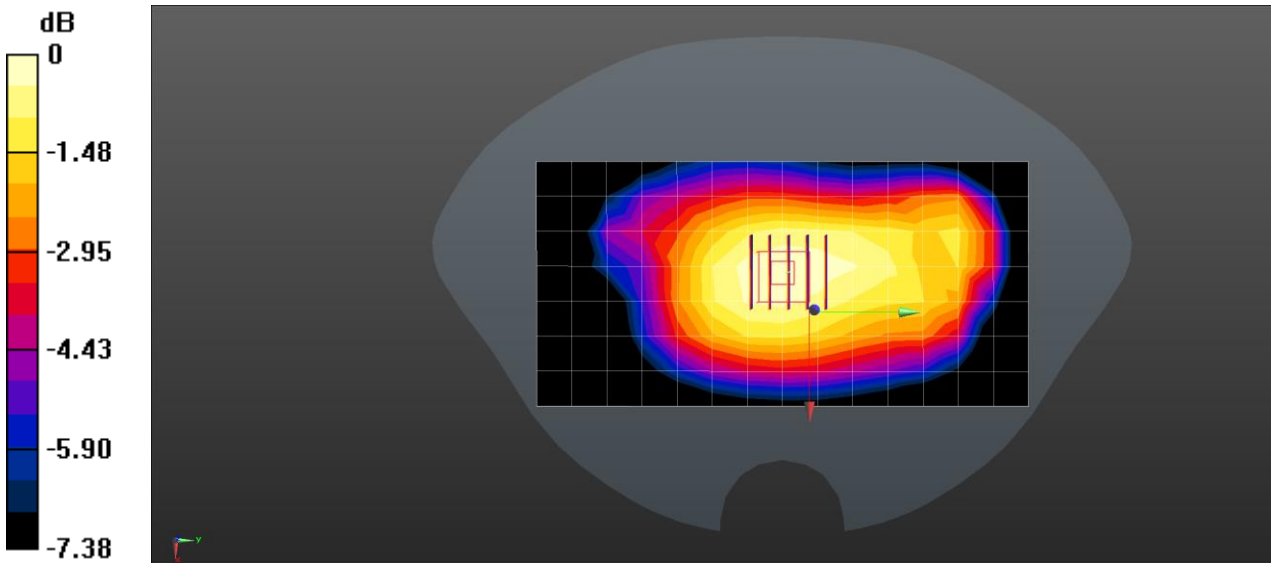
- Probe: EX3DV4 - SN3836; ConvF(9.28, 9.28, 9.28); Calibrated: 2022/6/27;



- Sensor-Surface: 3mm (Mechanical Surface Detection)
- Electronics: DAE4 Sn760; Calibrated: 2022/6/6
- Phantom: SAM1; Type: QD00P40CD; Serial: TP:1673
- Measurement SW: DASY52, Version 52.8 (4); SEMCAD X Version 14.6.8 (7028)

Body/Area Scan (8x15x1): Measurement grid: dx=15mm, dy=15mm
 Maximum value of SAR (measured) = 0.175 W/kg

Body/Zoom Scan (5x5x7)/Cube 0: Measurement grid: dx=8mm, dy=8mm, dz=5mm
 Reference Value = 13.914 V/m; Power Drift = 0.08 dB
 Peak SAR (extrapolated) = 0.200 W/kg
SAR(1 g) = 0.162 W/kg; SAR(10 g) = 0.126 W/kg
 Maximum value of SAR (measured) = 0.177 W/kg



0 dB = 0.177 W/kg = -7.52 dBW/kg

Date: 2023/4/24

Test Laboratory: SGS-CSTC Standards Technical Services Co., Ltd. Shenzhen Branch

LTE Band 17 10M_QPSK 1RB_0 Back side 0mm Ch23800
DUT: A6650; Type: Smart Handheld Computer;

Communication System: Generic LTE; Frequency: 711 MHz; Duty Cycle: 1:1
 Medium parameters used: $f = 711 \text{ MHz}$; $\sigma = 0.909 \text{ S/m}$; $\epsilon_r = 42.642$; $\rho = 1000 \text{ kg/m}^3$
 Phantom section: Flat Section
 Measurement Standard: DASY5 (IEEE/IEC/ANSI C63.19-2007)

DASY5 Configuration:



Unless otherwise agreed in writing, this document is issued by the Company subject to its General Conditions of Service printed overleaf, available on request or accessible at <https://www.sgs.com/en/Terms-and-Conditions>. Attention is drawn to the limitation of liability, indemnification and jurisdiction issues defined therein. Any holder of this document is advised that information contained hereon reflects the Company's findings at the time of its intervention only and within the limits of Client's instructions, if any. The Company's sole responsibility is to its Client and this document does not exonerate parties to a transaction from exercising all their rights and obligations under the transaction documents. This document cannot be reproduced except in full, without prior written approval of the Company. Any unauthorized alteration, forgery or falsification of the content or appearance of this document is unlawful and offenders may be prosecuted to the fullest extent of the law. Unless otherwise stated the results shown in this test report refer only to the sample(s) tested and such sample(s) are retained for 30 days only.
Attention: To check the authenticity of testing /inspection report & certificate, please contact us at telephone: (86-755) 83071443, or email: CN.Doccheck@sgs.com
 No.1 Workshop, M-10, Middle Section, Science & Technology Park, Nanshan District, Shenzhen, Guangdong, China 518057 t (86-755) 26012053 f (86-755) 26710594 www.sgs.com.cn
 中国·广东·深圳市南山区科技园中区M-10栋1号厂房 邮编: 518057 t (86-755) 26012053 f (86-755) 26710594 sgs.china@sgs.com

- Probe: EX3DV4 - SN3836; ConvF(9.28, 9.28, 9.28); Calibrated: 2022/6/27;
- Sensor-Surface: 3mm (Mechanical Surface Detection)
- Electronics: DAE4 Sn760; Calibrated: 2022/6/6
- Phantom: SAM1; Type: QD000P40CD; Serial: TP:1673
- Measurement SW: DASY52, Version 52.8 (4); SEMCAD X Version 14.6.8 (7028)

Body/Area Scan (8x15x1): Measurement grid: dx=15mm, dy=15mm

Maximum value of SAR (measured) = 0.577 W/kg

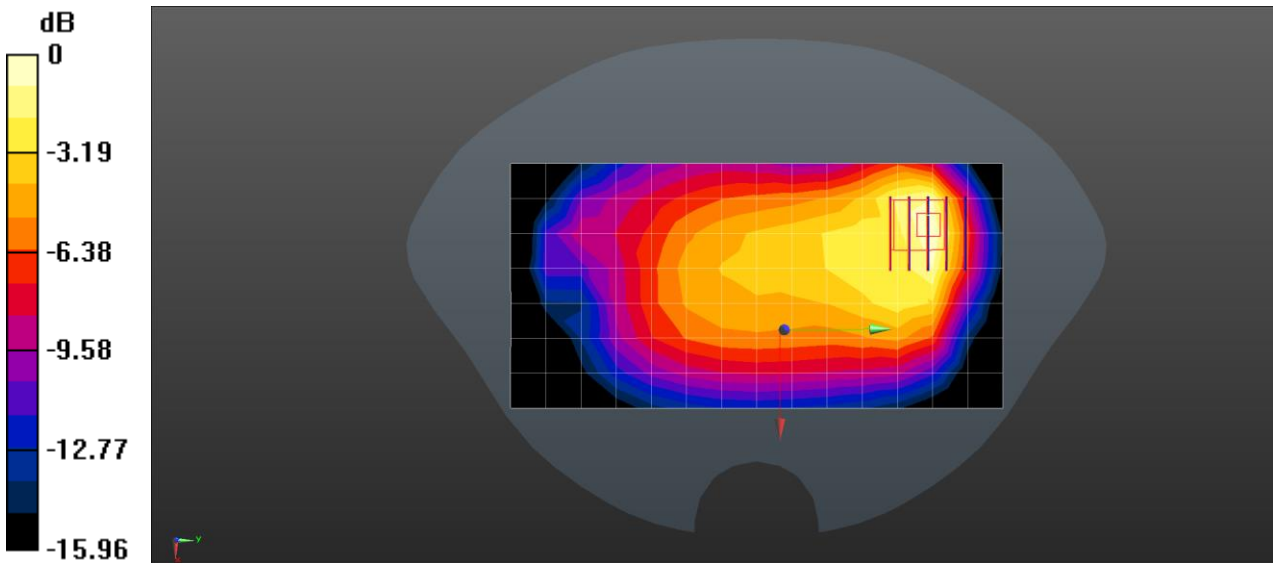
Body/Zoom Scan (5x5x7)/Cube 0: Measurement grid: dx=8mm, dy=8mm, dz=5mm

Reference Value = 15.831 V/m; Power Drift = 0.05 dB

Peak SAR (extrapolated) = 0.924 W/kg

SAR(1 g) = 0.437 W/kg; SAR(10 g) = 0.239 W/kg

Maximum value of SAR (measured) = 0.565 W/kg



0 dB = 0.565 W/kg = -2.48 dBW/kg

Date: 2023/5/6

Test Laboratory: SGS-CSTC Standards Technical Services Co., Ltd. Shenzhen Branch

LTE Band 25 20M_QPSK 50RB_25 Back side 10mm Ch26365

DUT: A6650; Type: Smart Handheld Computer;

Communication System: Generic LTE; Frequency: 1882.5 MHz; Duty Cycle: 1:1

Medium parameters used (interpolated): $f = 1882.5$ MHz; $\sigma = 1.416$ S/m; $\epsilon_r = 40.165$; $\rho = 1000$ kg/m³

Phantom section: Flat Section

Measurement Standard: DASY5 (IEEE/IEC/ANSI C63.19-2007)



Unless otherwise agreed in writing, this document is issued by the Company subject to its General Conditions of Service printed overleaf, available on request or accessible at <https://www.sgs.com/en/Terms-and-Conditions>. Attention is drawn to the limitation of liability, indemnification and jurisdiction issues defined therein. Any holder of this document is advised that information contained hereon reflects the Company's findings at the time of its intervention only and within the limits of Client's instructions, if any. The Company's sole responsibility is to its Client and this document does not exonerate parties to a transaction from exercising all their rights and obligations under the transaction documents. This document cannot be reproduced except in full, without prior written approval of the Company. Any unauthorized alteration, forgery or falsification of the content or appearance of this document is unlawful and offenders may be prosecuted to the fullest extent of the law. Unless otherwise stated the results shown in this test report refer only to the sample(s) tested and such sample(s) are retained for 30 days only.

Attention: To check the authenticity of testing /inspection report & certificate, please contact us at telephone: (86-755) 83071443, or email: CN.Doccheck@sgs.com

SGS-CSTC Standards Technical Services Co., Ltd.
Shenzhen Branch, Inspection & Testing Services

No.1 Workshop, M-10, Middle Section, Science & Technology Park, Nanshan District, Shenzhen, Guangdong, China 518057 t (86-755) 26012053 f (86-755) 26710594 www.sgsgroup.com.cn
中国·广东·深圳市南山区科技园中区M-10栋1号厂房 邮编: 518057 t (86-755) 26012053 f (86-755) 26710594 sgs.china@sgs.com

DASY5 Configuration:

- Probe: EX3DV4 - SN3836; ConvF(7.65, 7.65, 7.65); Calibrated: 2022/6/27;
- Sensor-Surface: 3mm (Mechanical Surface Detection)
- Electronics: DAE4 Sn760; Calibrated: 2022/6/6
- Phantom: SAM1; Type: QD000P40CD; Serial: TP:1673
- Measurement SW: DASY52, Version 52.8 (4); SEMCAD X Version 14.6.8 (7028)

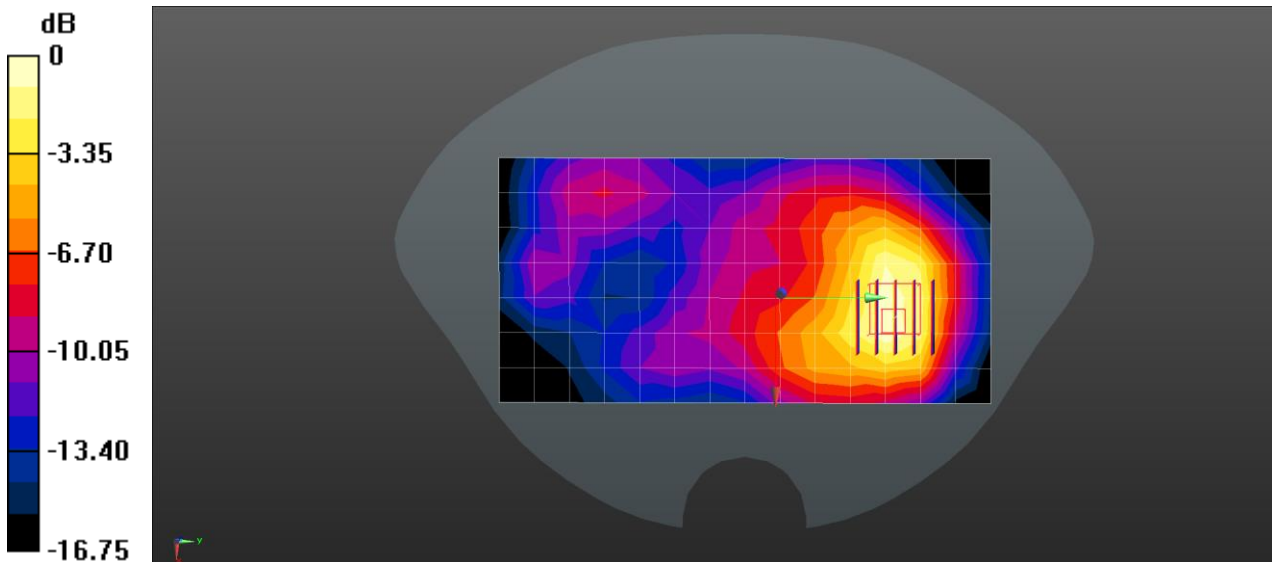
Body/Area Scan (8x15x1): Measurement grid: dx=15mm, dy=15mm
 Maximum value of SAR (measured) = 0.482 W/kg

Body/Zoom Scan (5x5x7)/Cube 0: Measurement grid: dx=8mm, dy=8mm, dz=5mm
 Reference Value = 6.664 V/m; Power Drift = -0.04 dB

Peak SAR (extrapolated) = 0.694 W/kg

SAR(1 g) = 0.398 W/kg; SAR(10 g) = 0.239 W/kg

Maximum value of SAR (measured) = 0.496 W/kg



0 dB = 0.496 W/kg = -3.05 dBW/kg

Date: 2023/5/6

Test Laboratory: SGS-CSTC Standards Technical Services Co., Ltd. Shenzhen Branch

LTE Band 25 20M_QPSK 50RB_25 Right Side 0mm Ch26365

DUT: A6650; Type: Smart Handheld Computer;

Communication System: Generic LTE; Frequency: 1882.5 MHz; Duty Cycle: 1:1

Medium parameters used (interpolated): $f = 1882.5 \text{ MHz}$; $\sigma = 1.416 \text{ S/m}$; $\epsilon_r = 40.165$; $\rho = 1000 \text{ kg/m}^3$



Phantom section: Flat Section

Measurement Standard: DASY5 (IEEE/IEC/ANSI C63.19-2007)

DASY5 Configuration:

- Probe: EX3DV4 - SN3836; ConvF(7.65, 7.65, 7.65); Calibrated: 2022/6/27;
- Sensor-Surface: 3mm (Mechanical Surface Detection)
- Electronics: DAE4 Sn760; Calibrated: 2022/6/6
- Phantom: SAM1; Type: QD000P40CD; Serial: TP:1673
- Measurement SW: DASY52, Version 52.8 (4); SEMCAD X Version 14.6.8 (7028)

Body/Area Scan (6x15x1): Measurement grid: dx=15mm, dy=15mm

Maximum value of SAR (measured) = 1.77 W/kg

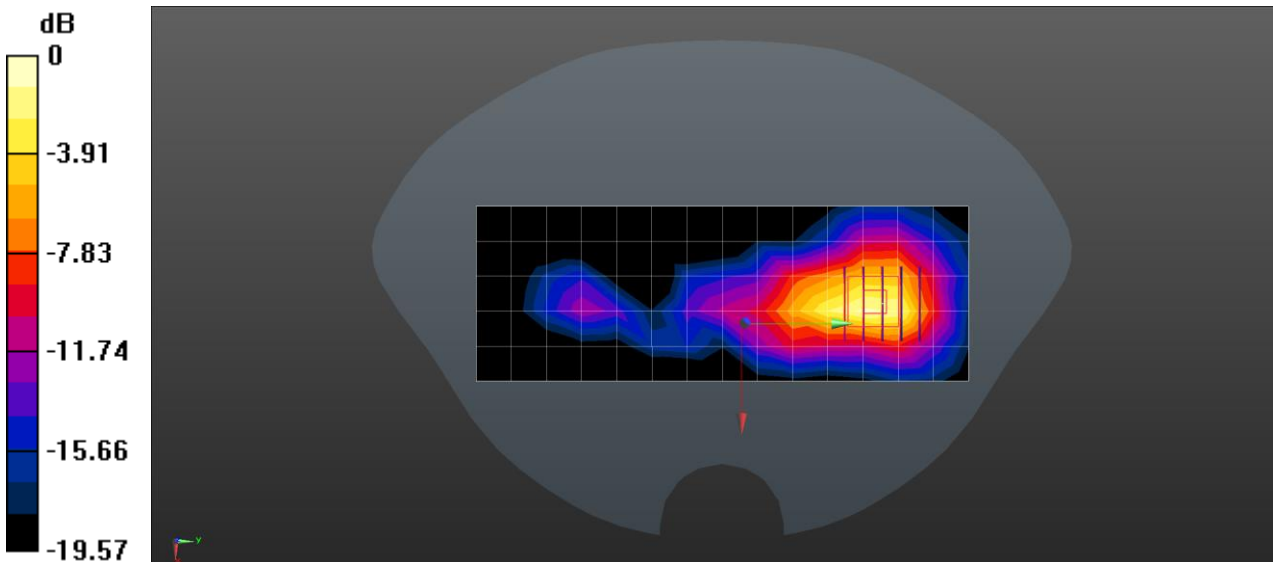
Body/Zoom Scan (5x5x7)/Cube 0: Measurement grid: dx=8mm, dy=8mm, dz=5mm

Reference Value = 10.240 V/m; Power Drift = -0.06 dB

Peak SAR (extrapolated) = 3.27 W/kg

SAR(1 g) = 1.53 W/kg; SAR(10 g) = 0.799 W/kg

Maximum value of SAR (measured) = 2.20 W/kg



0 dB = 2.20 W/kg = 3.42 dBW/kg

Date: 2023/4/27

Test Laboratory: SGS-CSTC Standards Technical Services Co., Ltd. Shenzhen Branch

LTE Band 26 10M_QPSK 1RB_0 Back side 10mm Ch26740

DUT: A6650; Type: Smart Handheld Computer;



Unless otherwise agreed in writing, this document is issued by the Company subject to its General Conditions of Service printed overleaf, available on request or accessible at <https://www.sgs.com/en/Terms-and-Conditions>. Attention is drawn to the limitation of liability, indemnification and jurisdiction issues defined therein. Any holder of this document is advised that information contained hereon reflects the Company's findings at the time of its intervention only and within the limits of Client's instructions, if any. The Company's sole responsibility is to its Client and this document does not exonerate parties to a transaction from exercising all their rights and obligations under the transaction documents. This document cannot be reproduced except in full, without prior written approval of the Company. Any unauthorized alteration, forgery or falsification of the content or appearance of this document is unlawful and offenders may be prosecuted to the fullest extent of the law. Unless otherwise stated the results shown in this test report refer only to the sample(s) tested and such sample(s) are retained for 30 days only.

Attention: To check the authenticity of testing /inspection report & certificate, please contact us at telephone: (86-755) 83071443, or email: CN.Doccheck@sgs.com

SGS-CSTC Standards Technical Services Co., Ltd. Shenzhen Branch

No.1 Workshop, M-10, Middle Section, Science & Technology Park, Nanshan District, Shenzhen, Guangdong, China 518057 t (86-755) 26012053 f (86-755) 26710594 www.sgs.com.cn
中国·广东·深圳市南山区科技园中区M-10栋1号厂房 邮编: 518057 t (86-755) 26012053 f (86-755) 26710594 sgs.china@sgs.com

SGS-CSTC Standards Technical Services Co., Ltd. Shenzhen Branch

SZEMC-TRF-01 Rev. A/0 Aug01,2022

Report No.: SZCR230200035201

Page: 127 of 148

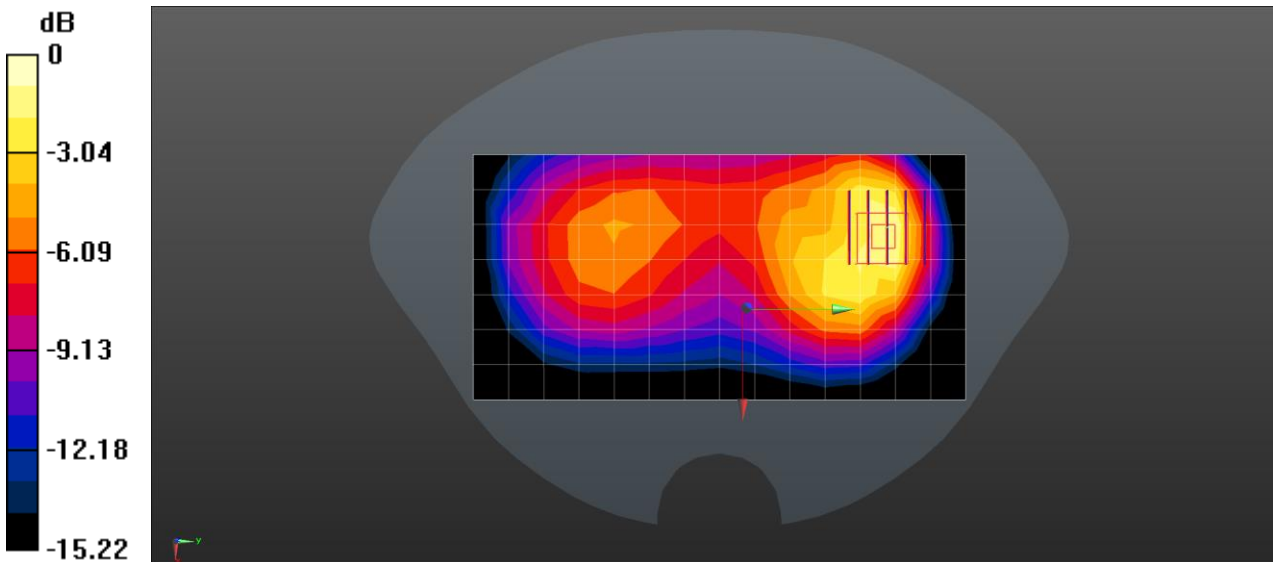
Communication System: Generic LTE; Frequency: 819 MHz; Duty Cycle: 1:1
 Medium parameters used (interpolated): $f = 819 \text{ MHz}$; $\sigma = 0.923 \text{ S/m}$; $\epsilon_r = 42.113$; $\rho = 1000 \text{ kg/m}^3$
 Phantom section: Flat Section
 Measurement Standard: DASY5 (IEEE/IEC/ANSI C63.19-2007)

DASY5 Configuration:

- Probe: EX3DV4 - SN3836; ConvF(8.99, 8.99, 8.99); Calibrated: 2022/6/27;
- Sensor-Surface: 3mm (Mechanical Surface Detection)
- Electronics: DAE4 Sn760; Calibrated: 2022/6/6
- Phantom: SAM1; Type: QD000P40CD; Serial: TP:1673
- Measurement SW: DASY52, Version 52.8 (4); SEMCAD X Version 14.6.8 (7028)

Body/Area Scan (8x15x1): Measurement grid: $dx=15\text{mm}$, $dy=15\text{mm}$
 Maximum value of SAR (measured) = 0.389 W/kg

Body/Zoom Scan (5x5x7)/Cube 0: Measurement grid: $dx=8\text{mm}$, $dy=8\text{mm}$, $dz=5\text{mm}$
 Reference Value = 8.573 V/m; Power Drift = 0.08 dB
 Peak SAR (extrapolated) = 0.689 W/kg
SAR(1 g) = 0.387 W/kg; SAR(10 g) = 0.218 W/kg
 Maximum value of SAR (measured) = 0.480 W/kg



0 dB = 0.480 W/kg = -3.19 dBW/kg

Date: 2023/4/27

Test Laboratory: SGS-CSTC Standards Technical Services Co., Ltd. Shenzhen Branch

LTE Band 26 10M_QPSK 1RB_0 Back side 0mm Ch26740



Unless otherwise agreed in writing, this document is issued by the Company subject to its General Conditions of Service printed overleaf, available on request or accessible at <https://www.sgs.com/en/Terms-and-Conditions>. Attention is drawn to the limitation of liability, indemnification and jurisdiction issues defined therein. Any holder of this document is advised that information contained hereon reflects the Company's findings at the time of its intervention only and within the limits of Client's instructions, if any. The Company's sole responsibility is to its Client and this document does not exonerate parties to a transaction from exercising all their rights and obligations under the transaction documents. This document cannot be reproduced except in full, without prior written approval of the Company. Any unauthorized alteration, forgery or falsification of the content or appearance of this document is unlawful and offenders may be prosecuted to the fullest extent of the law. Unless otherwise stated the results shown in this test report refer only to the sample(s) tested and such sample(s) are retained for 30 days only.
Attention: To check the authenticity of testing /inspection report & certificate, please contact us at telephone: (86-755) 83071443, or email: CN.Doccheck@sgs.com
 No.1 Workshop, M-10, Middle Section, Science & Technology Park, Nanshan District, Shenzhen, Guangdong, China 518057 t (86-755) 26012053 f (86-755) 26710594 www.sgs.com.cn
 中国·广东·深圳市南山区科技园中区M-10栋1号厂房 邮编: 518057 t (86-755) 26012053 f (86-755) 26710594 sgs.china@sgs.com

DUT: A6650; Type: Smart Handheld Computer;

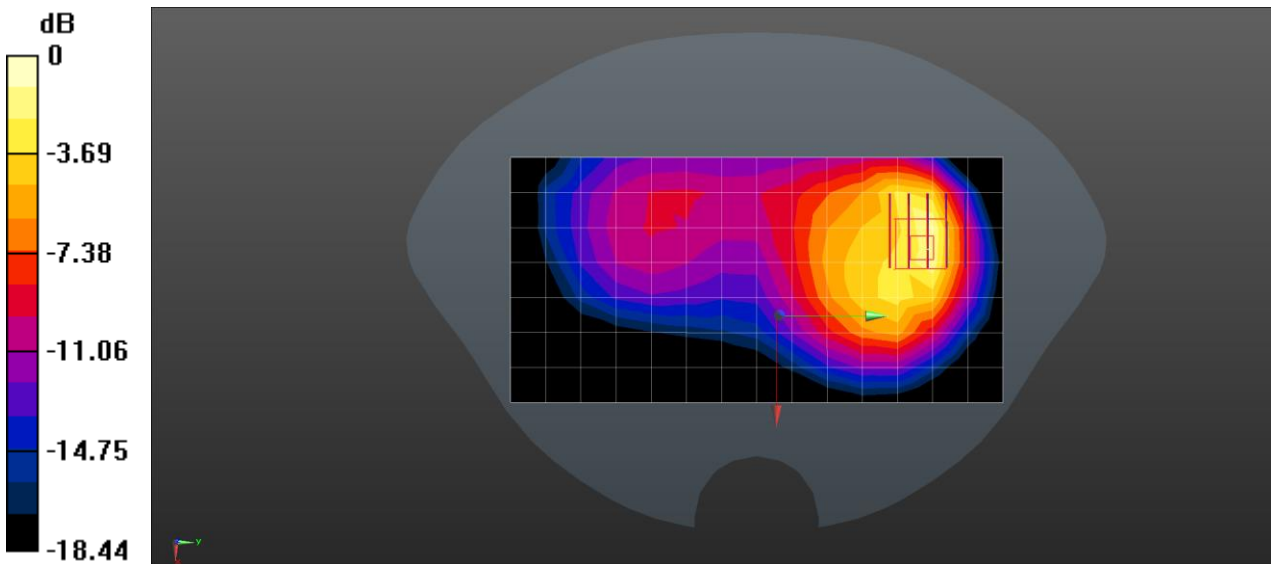
Communication System: Generic LTE; Frequency: 819 MHz; Duty Cycle: 1:1
 Medium parameters used: $f = 819 \text{ MHz}$; $\sigma = 0.923 \text{ S/m}$; $\epsilon_r = 42.113$; $\rho = 1000 \text{ kg/m}^3$
 Phantom section: Flat Section
 Measurement Standard: DASY5 (IEEE/IEC/ANSI C63.19-2007)

DASY5 Configuration:

- Probe: EX3DV4 - SN3836; ConvF(8.99, 8.99, 8.99); Calibrated: 2022/6/27;
- Sensor-Surface: 3mm (Mechanical Surface Detection)
- Electronics: DAE4 Sn760; Calibrated: 2022/6/6
- Phantom: SAM1; Type: QD000P40CD; Serial: TP:1673
- Measurement SW: DASY52, Version 52.8 (4); SEMCAD X Version 14.6.8 (7028)

Body/Area Scan (8x15x1): Measurement grid: $dx=15\text{mm}$, $dy=15\text{mm}$
 Maximum value of SAR (measured) = 0.912 W/kg

Body/Zoom Scan (5x5x7)/Cube 0: Measurement grid: $dx=8\text{mm}$, $dy=8\text{mm}$, $dz=5\text{mm}$
 Reference Value = 8.621 V/m; Power Drift = 0.08 dB
 Peak SAR (extrapolated) = 1.83 W/kg
SAR(1 g) = 0.873 W/kg; SAR(10 g) = 0.452 W/kg
 Maximum value of SAR (measured) = 1.17 W/kg



0 dB = 1.17 W/kg = 0.68 dBW/kg

Date: 2023/4/27

Test Laboratory: SGS-CSTC Standards Technical Services Co., Ltd. Shenzhen Branch



Unless otherwise agreed in writing, this document is issued by the Company subject to its General Conditions of Service printed overleaf, available on request or accessible at <https://www.sgs.com/en/Terms-and-Conditions>. Attention is drawn to the limitation of liability, indemnification and jurisdiction issues defined therein. Any holder of this document is advised that information contained hereon reflects the Company's findings at the time of its intervention only and within the limits of Client's instructions, if any. The Company's sole responsibility is to its Client and this document does not exonerate parties to a transaction from exercising all their rights and obligations under the transaction documents. This document cannot be reproduced except in full, without prior written approval of the Company. Any unauthorized alteration, forgery or falsification of the content or appearance of this document is unlawful and offenders may be prosecuted to the fullest extent of the law. Unless otherwise stated the results shown in this test report refer only to the sample(s) tested and such sample(s) are retained for 30 days only.
Attention: To check the authenticity of testing /inspection report & certificate, please contact us at telephone: (86-755) 83071443, or email: CN.Doccheck@sgs.com
 No.1 Workshop, M-10, Middle Section, Science & Technology Park, Nanshan District, Shenzhen, Guangdong, China 518057 t (86-755) 26012053 f (86-755) 26710594 www.sgs.com.cn
 中国·广东·深圳市南山区科技园中区M-10栋1号厂房 邮编: 518057 t (86-755) 26012053 f (86-755) 26710594 sgs.china@sgs.com

LTE Band 26 15M_QPSK 1RB_74 Back side 10mm Ch26915

DUT: A6650; Type: Smart Handheld Computer;

Communication System: Generic LTE; Frequency: 836.5 MHz; Duty Cycle: 1:1

Medium parameters used: $f = 836.5$ MHz; $\sigma = 0.931$ S/m; $\epsilon_r = 42.23$; $\rho = 1000$ kg/m³

Phantom section: Flat Section

Measurement Standard: DASY5 (IEEE/IEC/ANSI C63.19-2007)

DASY5 Configuration:

- Probe: EX3DV4 - SN3836; ConvF(8.99, 8.99, 8.99); Calibrated: 2022/6/27;
- Sensor-Surface: 3mm (Mechanical Surface Detection)
- Electronics: DAE4 Sn760; Calibrated: 2022/6/6
- Phantom: SAM1; Type: QD000P40CD; Serial: TP:1673
- Measurement SW: DASY52, Version 52.8 (4); SEMCAD X Version 14.6.8 (7028)

Body/Area Scan (8x15x1): Measurement grid: dx=15mm, dy=15mm

Maximum value of SAR (measured) = 0.382 W/kg

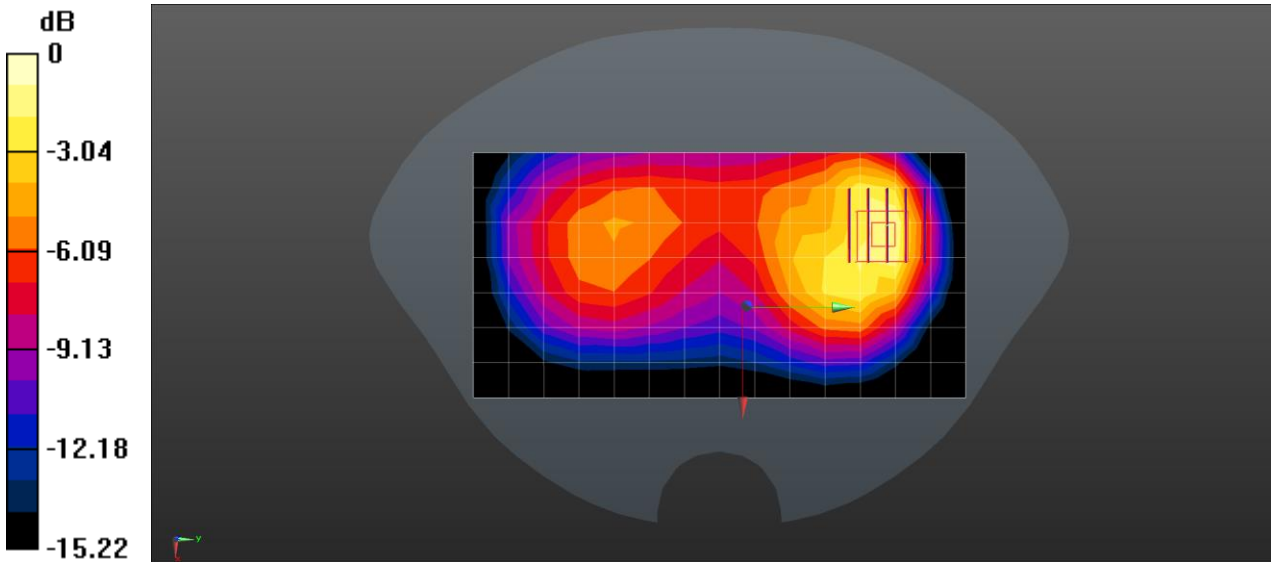
Body/Zoom Scan (5x5x7)/Cube 0: Measurement grid: dx=8mm, dy=8mm, dz=5mm

Reference Value = 8.559 V/m; Power Drift = 0.09 dB

Peak SAR (extrapolated) = 0.686 W/kg

SAR(1 g) = 0.374 W/kg; SAR(10 g) = 0.215 W/kg

Maximum value of SAR (measured) = 0.487 W/kg



0 dB = 0.487 W/kg = -3.26 dBW/kg

Date: 2023/4/27



Unless otherwise agreed in writing, this document is issued by the Company subject to its General Conditions of Service printed overleaf, available on request or accessible at <https://www.sgs.com/en/Terms-and-Conditions>. Attention is drawn to the limitation of liability, indemnification and jurisdiction issues defined therein. Any holder of this document is advised that information contained hereon reflects the Company's findings at the time of its intervention only and within the limits of Client's instructions, if any. The Company's sole responsibility is to its Client and this document does not exonerate parties to a transaction from exercising all their rights and obligations under the transaction documents. This document cannot be reproduced except in full, without prior written approval of the Company. Any unauthorized alteration, forgery or falsification of the content or appearance of this document is unlawful and offenders may be prosecuted to the fullest extent of the law. Unless otherwise stated the results shown in this test report refer only to the sample(s) tested and such sample(s) are retained for 30 days only.

Attention: To check the authenticity of testing /inspection report & certificate, please contact us at telephone: (86-755) 83071443, or email: CN.Doccheck@sgs.com
 No.1 Workshop, M-10, Middle Section, Science & Technology Park, Nanshan District, Shenzhen, Guangdong, China 518057 t (86-755) 26012053 f (86-755) 26710594 www.sgsgroup.com.cn
 中国·广东·深圳市南山区科技园中区M-10栋1号厂房 邮编: 518057 t (86-755) 26012053 f (86-755) 26710594 sgs.china@sgs.com

Test Laboratory: SGS-CSTC Standards Technical Services Co., Ltd. Shenzhen Branch

LTE Band 26 15M_QPSK 1RB_74 Back side 0mm Ch26915

DUT: A6650; Type: Smart Handheld Computer;

Communication System: Generic LTE; Frequency: 836.5 MHz; Duty Cycle: 1:1

Medium parameters used (interpolated): $f = 836.5$ MHz; $\sigma = 0.931$ S/m; $\epsilon_r = 42.23$; $\rho = 1000$ kg/m³

Phantom section: Flat Section

Measurement Standard: DASY5 (IEEE/IEC/ANSI C63.19-2007)

DASY5 Configuration:

- Probe: EX3DV4 - SN3836; ConvF(8.99, 8.99, 8.99); Calibrated: 2022/6/27;
- Sensor-Surface: 3mm (Mechanical Surface Detection)
- Electronics: DAE4 Sn760; Calibrated: 2022/6/6
- Phantom: SAM1; Type: QD000P40CD; Serial: TP:1673
- Measurement SW: DASY52, Version 52.8 (4); SEMCAD X Version 14.6.8 (7028)

Body/Area Scan (8x15x1): Measurement grid: dx=15mm, dy=15mm

Maximum value of SAR (measured) = 0.923 W/kg

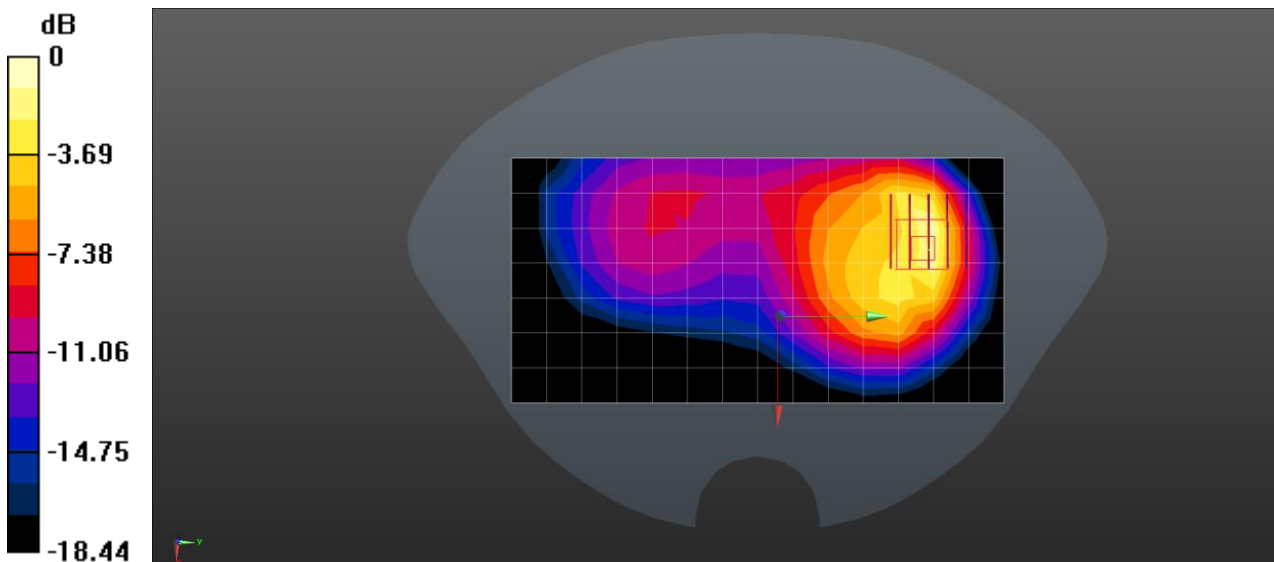
Body/Zoom Scan (5x5x7)/Cube 0: Measurement grid: dx=8mm, dy=8mm, dz=5mm

Reference Value = 8.626 V/m; Power Drift = 0.08 dB

Peak SAR (extrapolated) = 1.85 W/kg

SAR(1 g) = 0.870 W/kg; SAR(10 g) = 0.449 W/kg

Maximum value of SAR (measured) = 1.23 W/kg



0 dB = 1.23 W/kg = 0.692 dBW/kg



Test Laboratory: SGS-CSTC Standards Technical Services Co., Ltd. Shenzhen Branch

LTE Band 41 20M_QPSK 1RB_0 Back side 10mm Ch40620

DUT: A6650; Type: Smart Handheld Computer;

Communication System: Generic LTE; Frequency: 2593 MHz; Duty Cycle: 1:1

Medium parameters used: $f = 2593 \text{ MHz}$; $\sigma = 1.95 \text{ S/m}$; $\epsilon_r = 39.129$; $\rho = 1000 \text{ kg/m}^3$

Phantom section: Flat Section

Measurement Standard: DASYS5 (IEEE/IEC/ANSI C63.19-2007)

DASY5 Configuration:

- Probe: EX3DV4 - SN3836; ConvF(6.99, 6.99, 6.99); Calibrated: 2022/6/27;
- Sensor-Surface: 3mm (Mechanical Surface Detection)
- Electronics: DAE4 Sn760; Calibrated: 2022/6/6
- Phantom: SAM1; Type: QD000P40CD; Serial: TP:1673
- Measurement SW: DASYS52, Version 52.8 (4); SEMCAD X Version 14.6.8 (7028)

Body/Area Scan (10x18x1): Measurement grid: $dx=12\text{mm}$, $dy=12\text{mm}$

Maximum value of SAR (measured) = 0.121 W/kg

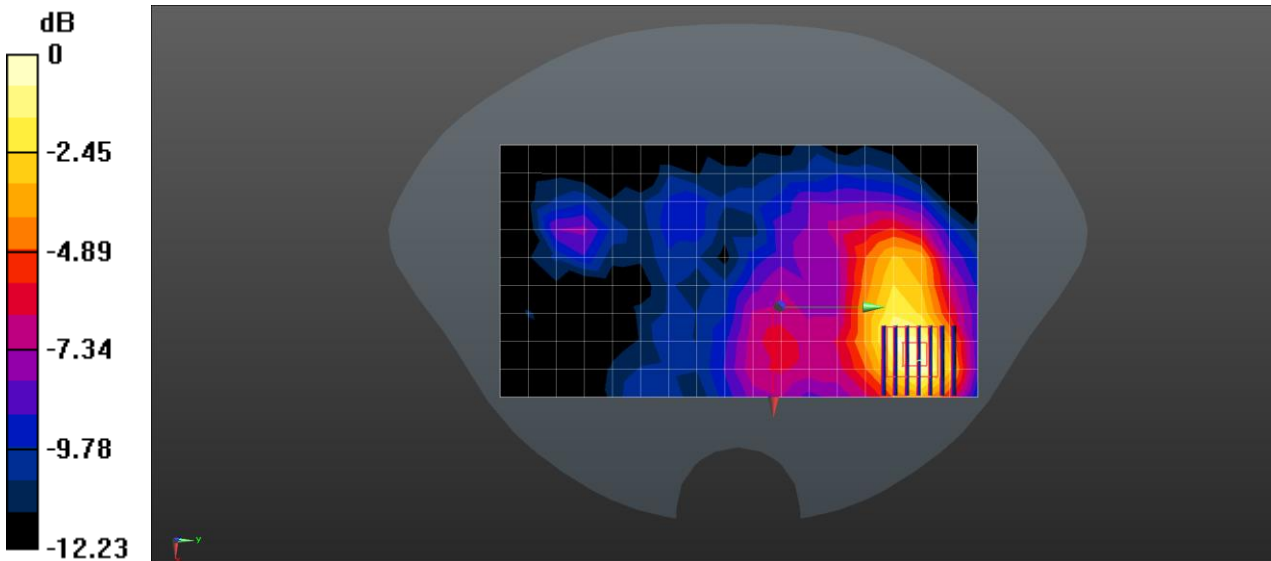
Body/Zoom Scan (7x7x7)/Cube 0: Measurement grid: $dx=5\text{mm}$, $dy=5\text{mm}$, $dz=5\text{mm}$

Reference Value = 2.634 V/m; Power Drift = -0.16 dB

Peak SAR (extrapolated) = 0.197 W/kg

SAR(1 g) = 0.110 W/kg; SAR(10 g) = 0.051 W/kg

Maximum value of SAR (measured) = 0.127 W/kg



0 dB = 0.127 W/kg = -8.96 dBW/kg



Date: 2023/4/22

Test Laboratory: SGS-CSTC Standards Technical Services Co., Ltd. Shenzhen Branch

LTE Band 41 20M_QPSK 1RB_0 Back side 0mm Ch40620

DUT: A6650; Type: Smart Handheld Computer;

Communication System: Generic LTE; Frequency: 2593 MHz; Duty Cycle: 1:1

Medium parameters used: $f = 2593$ MHz; $\sigma = 1.95$ S/m; $\epsilon_r = 39.129$; $\rho = 1000$ kg/m³

Phantom section: Flat Section

Measurement Standard: DASY5 (IEEE/IEC/ANSI C63.19-2007)

DASY5 Configuration:

- Probe: EX3DV4 - SN3836; ConvF(6.99, 6.99, 6.99); Calibrated: 2022/6/27;
- Sensor-Surface: 3mm (Mechanical Surface Detection)
- Electronics: DAE4 Sn760; Calibrated: 2022/6/6
- Phantom: SAM1; Type: QD000P40CD; Serial: TP:1673
- Measurement SW: DASY52, Version 52.8 (4); SEMCAD X Version 14.6.8 (7028)

Body/Area Scan (10x18x1): Measurement grid: dx=12mm, dy=12mm

Maximum value of SAR (measured) = 0.505 W/kg

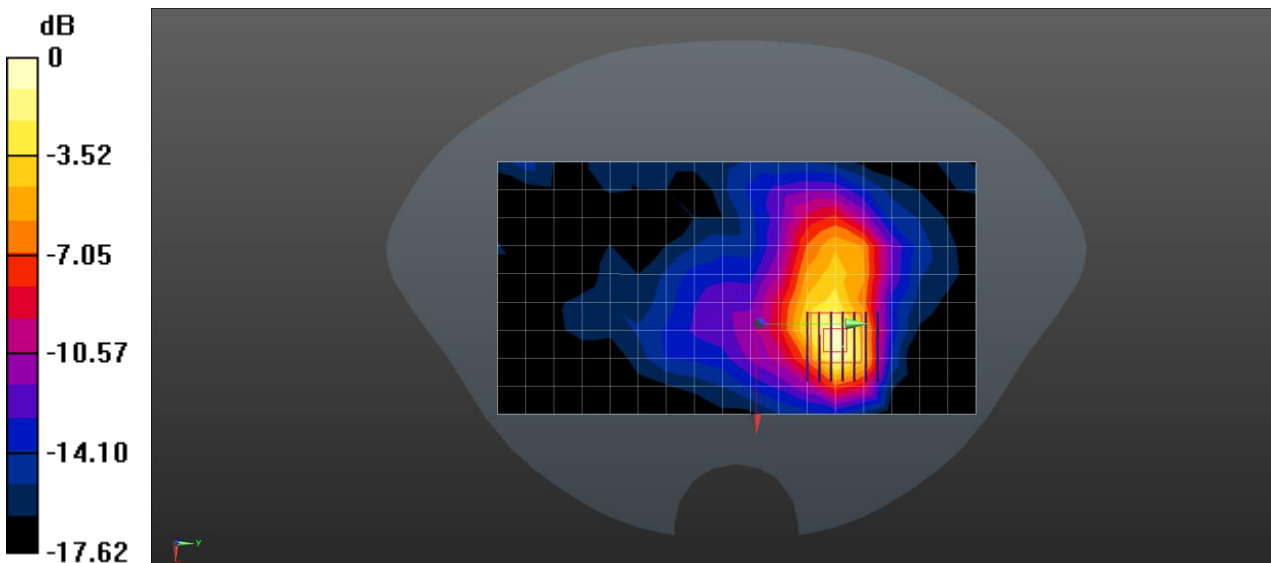
Body/Zoom Scan (7x7x7)/Cube 0: Measurement grid: dx=5mm, dy=5mm, dz=5mm

Reference Value = 3.806 V/m; Power Drift = 0.03 dB

Peak SAR (extrapolated) = 0.889 W/kg

SAR(1 g) = 0.411 W/kg; SAR(10 g) = 0.185 W/kg

Maximum value of SAR (measured) = 0.531 W/kg



0 dB = 0.531 W/kg = -2.75 dBW/kg

Date: 2023/5/4

Test Laboratory: SGS-CSTC Standards Technical Services Co., Ltd. Shenzhen Branch

LTE Band 66 20M_QPSK 50RB_50 Back side 10mm Ch132322

DUT: A6650; Type: Smart Handheld Computer;

Communication System: Generic LTE; Frequency: 1745 MHz; Duty Cycle: 1:1

Medium parameters used (interpolated): $f = 1745$ MHz; $\sigma = 1.365$ S/m; $\epsilon_r = 40.358$; $\rho = 1000$ kg/m³

Phantom section: Flat Section

Measurement Standard: DASYS (IEEE/IEC/ANSI C63.19-2007)

DASY5 Configuration:

- Probe: EX3DV4 - SN3836; ConvF(8.02, 8.02, 8.02); Calibrated: 2022/6/27;
- Sensor-Surface: 3mm (Mechanical Surface Detection)
- Electronics: DAE4 Sn760; Calibrated: 2022/6/6
- Phantom: SAM1; Type: QD00P40CD; Serial: TP:1673
- Measurement SW: DASYS2, Version 52.8 (4); SEMCAD X Version 14.6.8 (7028)

Body/Area Scan (8x15x1): Measurement grid: dx=15mm, dy=15mm

Maximum value of SAR (measured) = 0.818 W/kg

Body/Zoom Scan (5x5x7)/Cube 0: Measurement grid: dx=8mm, dy=8mm, dz=5mm

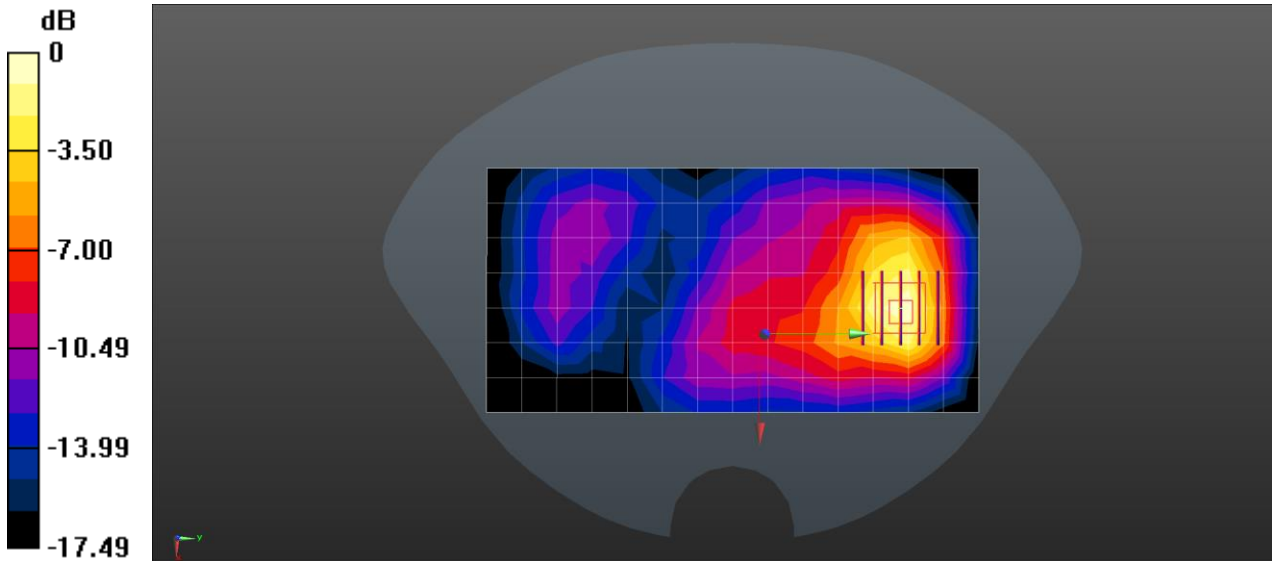
Reference Value = 8.569 V/m; Power Drift = 0.02 dB

Peak SAR (extrapolated) = 1.23 W/kg

SAR(1 g) = 0.685 W/kg; SAR(10 g) = 0.384 W/kg

Maximum value of SAR (measured) = 0.868 W/kg





0 dB = 0.868 W/kg = -0.61 dBW/kg

Date: 2023/5/4

Test Laboratory: SGS-CSTC Standards Technical Services Co., Ltd. Shenzhen Branch

LTE Band 66 20M_QPSK 50RB_50 Back side 0mm Ch132322

DUT: A6650; Type: Smart Handheld Computer;

Communication System: Generic LTE; Frequency: 1745 MHz; Duty Cycle: 1:1

Medium parameters used (interpolated): $f = 1745$ MHz; $\sigma = 1.365$ S/m; $\epsilon_r = 40.358$; $\rho = 1000$ kg/m³

Phantom section: Flat Section

Measurement Standard: DASYS (IEEE/IEC/ANSI C63.19-2007)

DASY5 Configuration:

- Probe: EX3DV4 - SN3836; ConvF(8.02, 8.02, 8.02); Calibrated: 2022/6/27;
- Sensor-Surface: 3mm (Mechanical Surface Detection)
- Electronics: DAE4 Sn760; Calibrated: 2022/6/6
- Phantom: SAM1; Type: QD000P40CD; Serial: TP:1673
- Measurement SW: DASY52, Version 52.8 (4); SEMCAD X Version 14.6.8 (7028)

Body/Area Scan (8x15x1): Measurement grid: dx=15mm, dy=15mm

Maximum value of SAR (measured) = 2.22 W/kg

Body/Zoom Scan (5x5x7)/Cube 0: Measurement grid: dx=8mm, dy=8mm, dz=5mm

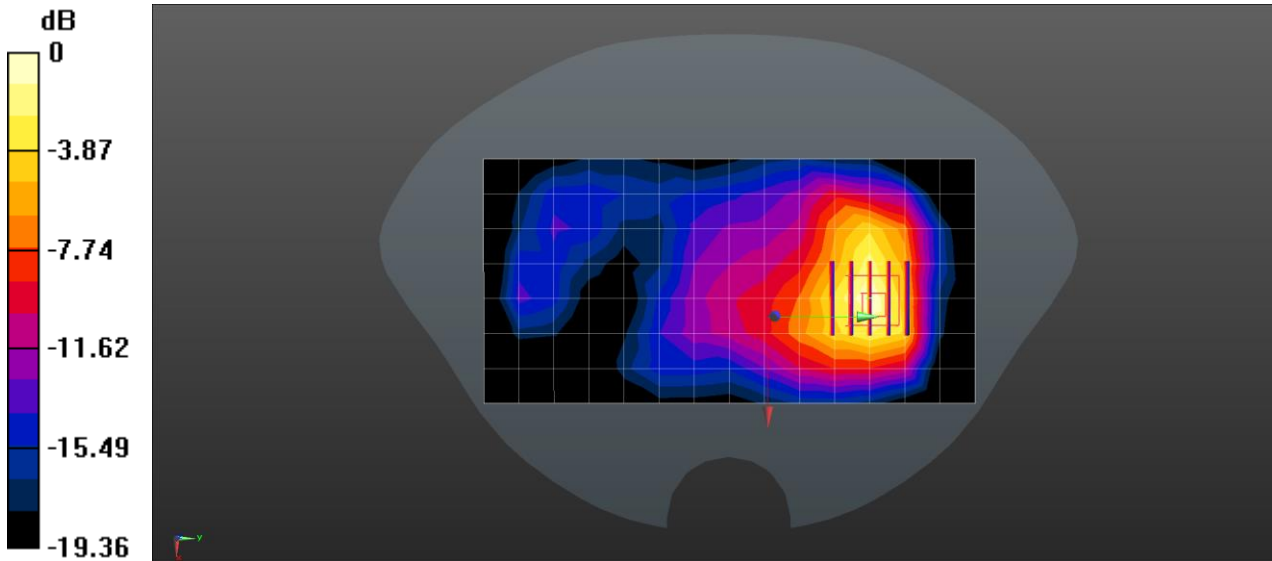
Reference Value = 11.192 V/m; Power Drift = 0.06 dB

Peak SAR (extrapolated) = 3.50 W/kg

SAR(1 g) = 1.79 W/kg; SAR(10 g) = 0.931 W/kg

Maximum value of SAR (measured) = 2.14 W/kg





0 dB = 2.14 W/kg = 3.30 dBW/kg

Date: 2023/4/24

Test Laboratory: SGS-CSTC Standards Technical Services Co., Ltd. Shenzhen Branch

LTE Band 71 20M_QPSK 1RB_0 Left side 10mm Ch133297

DUT: A6650; Type: Smart Handheld Computer;

Communication System: Generic LTE; Frequency: 680.5 MHz; Duty Cycle: 1:1

Medium parameters used (interpolated): $f = 680.5$ MHz; $\sigma = 0.907$ S/m; $\epsilon_r = 42.743$; $\rho = 1000$ kg/m³

Phantom section: Flat Section

Measurement Standard: DASY5 (IEEE/IEC/ANSI C63.19-2007)

DASY5 Configuration:

- Probe: EX3DV4 - SN3836; ConvF(9.28, 9.28, 9.28); Calibrated: 2022/6/27;
- Sensor-Surface: 3mm (Mechanical Surface Detection)
- Electronics: DAE4 Sn760; Calibrated: 2022/6/6
- Phantom: SAM1; Type: QD000P40CD; Serial: TP:1673
- Measurement SW: DASY52, Version 52.8 (4); SEMCAD X Version 14.6.8 (7028)

Body/Area Scan (5x15x1): Measurement grid: dx=15mm, dy=15mm

Maximum value of SAR (measured) = 0.103 W/kg

Body/Zoom Scan (5x5x7)/Cube 0: Measurement grid: dx=8mm, dy=8mm, dz=5mm

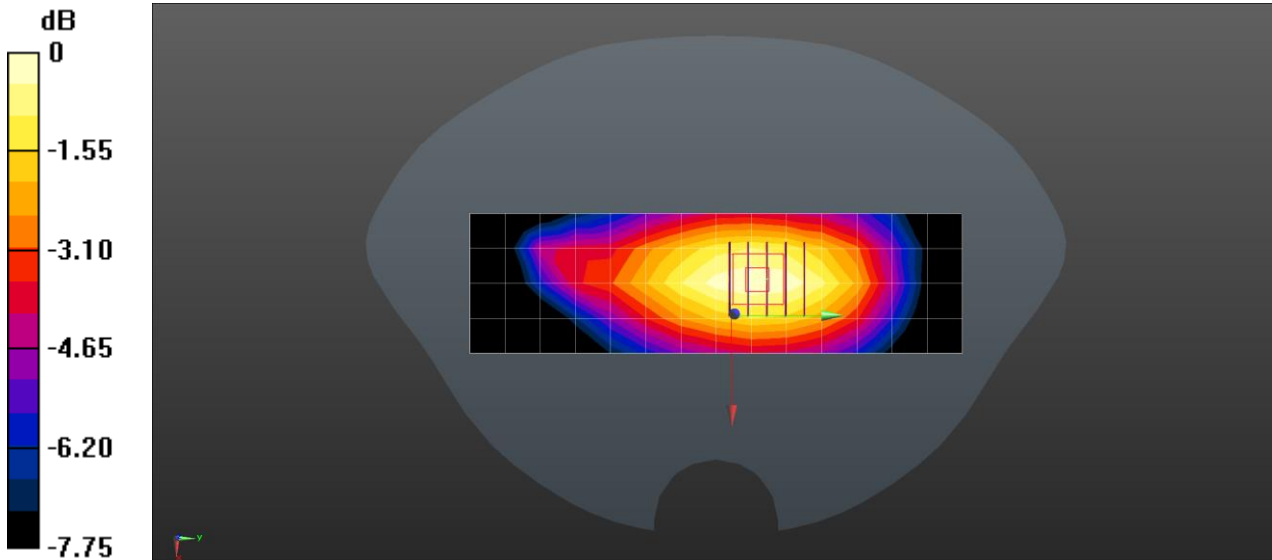
Reference Value = 10.339 V/m; Power Drift = 0.01 dB

Peak SAR (extrapolated) = 0.122 W/kg



SAR(1 g) = 0.091 W/kg; SAR(10 g) = 0.066 W/kg

Maximum value of SAR (measured) = 0.103 W/kg



0 dB = 0.103 W/kg = -9.87 dBW/kg

Date: 2023/4/24

Test Laboratory: SGS-CSTC Standards Technical Services Co., Ltd. Shenzhen Branch

LTE Band 71 20M_QPSK 1RB_0 Back side 0mm Ch133297

DUT: A6650; Type: Smart Handheld Computer;

Communication System: Generic LTE; Frequency: 680.5 MHz; Duty Cycle: 1:1

Medium parameters used: $f = 680.5$ MHz; $\sigma = 0.907$ S/m; $\epsilon_r = 42.743$; $\rho = 1000$ kg/m³

Phantom section: Flat Section

Measurement Standard: DASY5 (IEEE/IEC/ANSI C63.19-2007)

DASY5 Configuration:

- Probe: EX3DV4 - SN3836; ConvF(9.28, 9.28, 9.28); Calibrated: 2022/6/27;
- Sensor-Surface: 3mm (Mechanical Surface Detection)
- Electronics: DAE4 Sn760; Calibrated: 2022/6/6
- Phantom: SAM1; Type: QD000P40CD; Serial: TP:1673
- Measurement SW: DASY52, Version 52.8 (4); SEMCAD X Version 14.6.8 (7028)

Body/Area Scan (8x15x1): Measurement grid: dx=15mm, dy=15mm

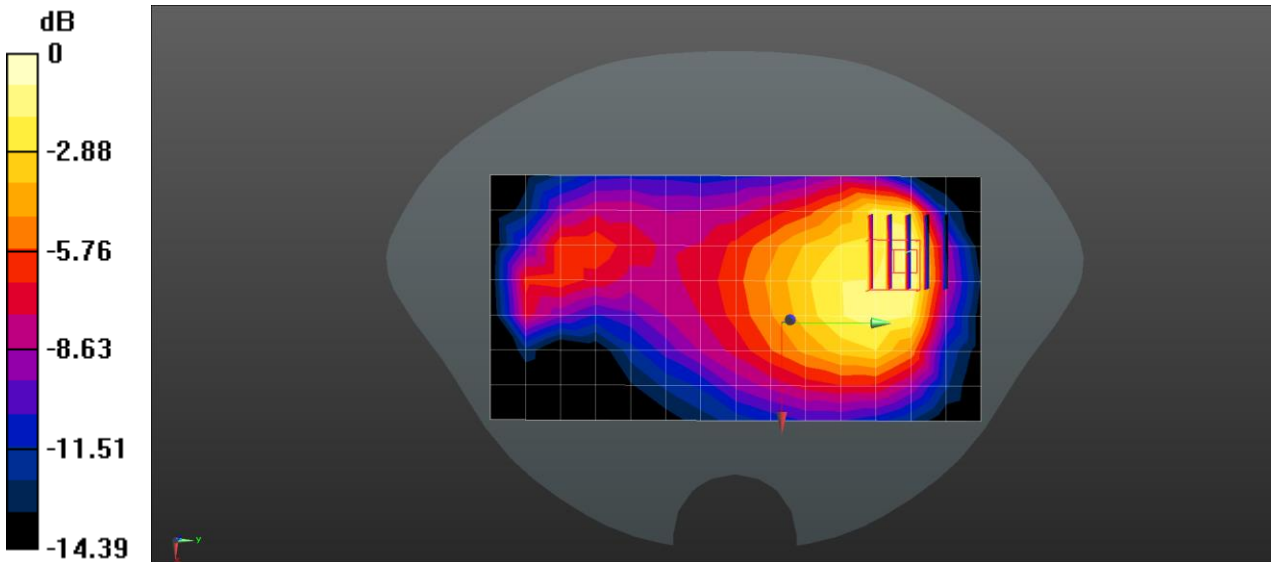
Maximum value of SAR (measured) = 0.109 W/kg

Body/Zoom Scan (5x5x7)/Cube 0: Measurement grid: dx=8mm, dy=8mm, dz=5mm

Reference Value = 5.811 V/m; Power Drift = 0.03 dB



Peak SAR (extrapolated) = 0.182 W/kg
SAR(1 g) = 0.371 W/kg; SAR(10 g) = 0.236 W/kg
 Maximum value of SAR (measured) = 0.123 W/kg



0 dB = 0.123 W/kg = -9.10 dBW/kg

Date: 2023/4/18

Test Laboratory: SGS-CSTC Standards Technical Services Co., Ltd. Shenzhen Branch

WLAN2.4GHz 802.11b 1Mbps Back side 10mm Ch11
DUT: A6650; Type: Smart Handheld Computer;

Communication System: 2.4G WIFI; Frequency: 2462 MHz; Duty Cycle: 1:1
 Medium parameters used (interpolated): $f = 2462 \text{ MHz}$; $\sigma = 1.815 \text{ S/m}$; $\epsilon_r = 39.31$; $\rho = 1000 \text{ kg/m}^3$
 Phantom section: Flat Section
 Measurement Standard: DASY5 (IEEE/IEC/ANSI C63.19-2007)

DASY5 Configuration:

- Probe: EX3DV4 - SN3836; ConvF(7.27, 7.27, 7.27); Calibrated: 2022/6/27;
- Sensor-Surface: 3mm (Mechanical Surface Detection)
- Electronics: DAE4 Sn760; Calibrated: 2022/6/6
- Phantom: SAM1; Type: QD000P40CD; Serial: TP:1673
- Measurement SW: DASY52, Version 52.8 (4); SEMCAD X Version 14.6.8 (7028)

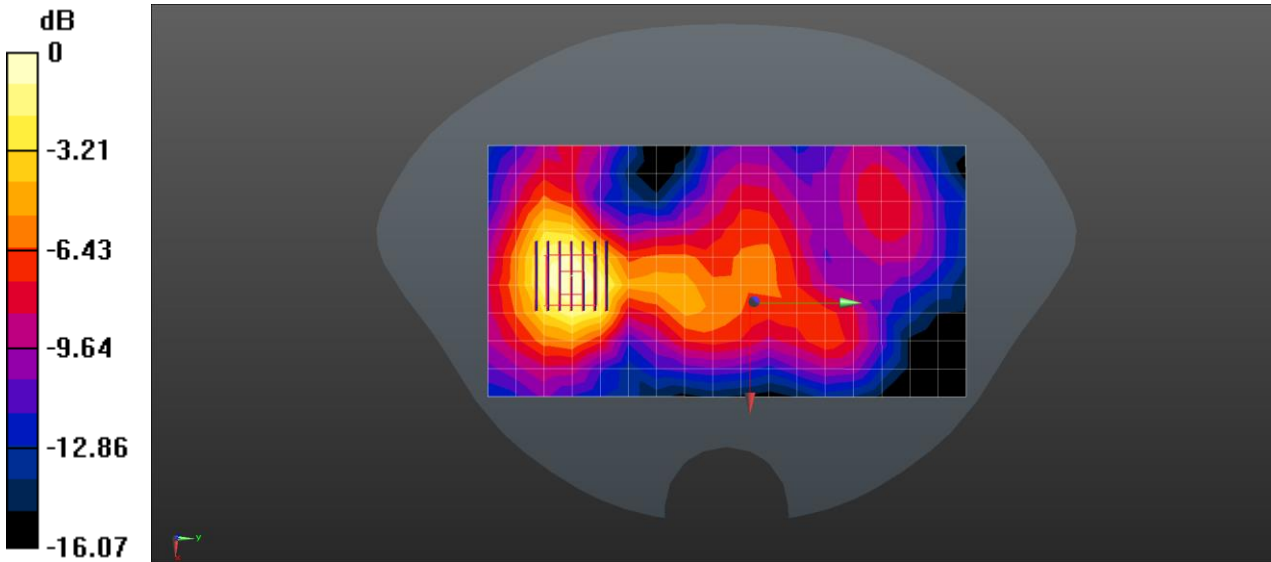
Body/Area Scan (10x18x1): Measurement grid: dx=12mm, dy=12mm
 Maximum value of SAR (measured) = 0.216 W/kg

Body/Zoom Scan (7x7x7)/Cube 0: Measurement grid: dx=5mm, dy=5mm, dz=5mm



Unless otherwise agreed in writing, this document is issued by the Company subject to its General Conditions of Service printed overleaf, available on request or accessible at <https://www.sgs.com/en/Terms-and-Conditions>. Attention is drawn to the limitation of liability, indemnification and jurisdiction issues defined therein. Any holder of this document is advised that information contained hereon reflects the Company's findings at the time of its intervention only and within the limits of Client's instructions, if any. The Company's sole responsibility is to its Client and this document does not exonerate parties to a transaction from exercising all their rights and obligations under the transaction documents. This document cannot be reproduced except in full, without prior written approval of the Company. Any unauthorized alteration, forgery or falsification of the content or appearance of this document is unlawful and offenders may be prosecuted to the fullest extent of the law. Unless otherwise stated the results shown in this test report refer only to the sample(s) tested and such sample(s) are retained for 30 days only.
Attention: To check the authenticity of testing /inspection report & certificate, please contact us at telephone: (86-755) 83071443, or email: CN.Doccheck@sgs.com
 No.1 Workshop, M-10, Middle Section, Science & Technology Park, Nanshan District, Shenzhen, Guangdong, China 518057 t (86-755) 26012053 f (86-755) 26710594 www.sgs.com.cn
 中国·广东·深圳市南山区科技园中区M-10栋1号厂房 邮编: 518057 t (86-755) 26012053 f (86-755) 26710594 sgs.china@sgs.com

Reference Value = 5.210 V/m; Power Drift = 0.15 dB
 Peak SAR (extrapolated) = 0.321 W/kg
SAR(1 g) = 0.171 W/kg; SAR(10 g) = 0.093 W/kg
 Maximum value of SAR (measured) = 0.212 W/kg



0 dB = 0.212 W/kg = -6.74 dBW/kg

Date: 2023/4/18

Test Laboratory: SGS-CSTC Standards Technical Services Co., Ltd. Shenzhen Branch

WLAN2.4GHz 802.11b 1Mbps Right side 0mm Ch11

DUT: A6650; Type: Smart Handheld Computer;

Communication System: 2.4G WIFI; Frequency: 2462 MHz; Duty Cycle: 1:1

Medium parameters used (interpolated): $f = 2462$ MHz; $\sigma = 1.815$ S/m; $\epsilon_r = 39.31$; $\rho = 1000$ kg/m³

Phantom section: Flat Section

Measurement Standard: DASYS (IEEE/IEC/ANSI C63.19-2007)

DASY5 Configuration:

- Probe: EX3DV4 - SN3836; ConvF(7.27, 7.27, 7.27); Calibrated: 2022/6/27;
- Sensor-Surface: 3mm (Mechanical Surface Detection)
- Electronics: DAE4 Sn760; Calibrated: 2022/6/6
- Phantom: SAM1; Type: QD00P40CD; Serial: TP:1673
- Measurement SW: DASY52, Version 52.8 (4); SEMCAD X Version 14.6.8 (7028)

Body/Area Scan (6x18x1): Measurement grid: dx=12mm, dy=12mm

Maximum value of SAR (measured) = 0.866 W/kg



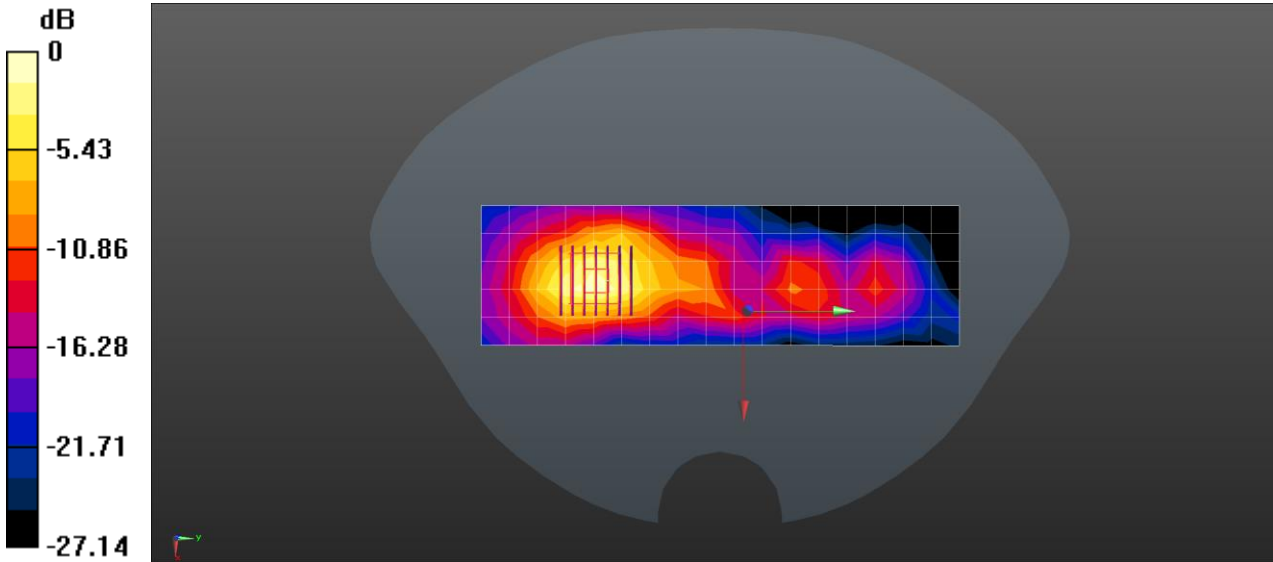
Body/Zoom Scan (7x7x7)/Cube 0: Measurement grid: dx=5mm, dy=5mm, dz=5mm

Reference Value = 0.898 V/m; Power Drift = 0.04 dB

Peak SAR (extrapolated) = 1.61 W/kg

SAR(1 g) = 0.728 W/kg; SAR(10 g) = 0.315 W/kg

Maximum value of SAR (measured) = 0.985 W/kg



0 dB = 0.985 W/kg = -0.07 dBW/kg

Date: 2023/4/18

Test Laboratory: SGS-CSTC Standards Technical Services Co., Ltd. Shenzhen Branch

Bluetooth GFSK Back side 10mm Ch78

DUT: A6650; Type: Smart Handheld Computer;

Communication System: BT; Frequency: 2480 MHz; Duty Cycle: 1:1

Medium parameters used (interpolated): $f = 2480$ MHz; $\sigma = 1.827$ S/m; $\epsilon_r = 39.286$; $\rho = 1000$ kg/m³

Phantom section: Flat Section

Measurement Standard: DASY5 (IEEE/IEC/ANSI C63.19-2007)

DASY5 Configuration:

- Probe: EX3DV4 - SN3836; ConvF(7.27, 7.27, 7.27); Calibrated: 2022/6/27;
- Sensor-Surface: 3mm (Mechanical Surface Detection)
- Electronics: DAE4 Sn760; Calibrated: 2022/6/6
- Phantom: SAM1; Type: QD000P40CD; Serial: TP:1673
- Measurement SW: DASY52, Version 52.8 (4); SEMCAD X Version 14.6.8 (7028)

Body/Area Scan (10x18x1): Measurement grid: dx=12mm, dy=12mm

Maximum value of SAR (measured) = 0.0337 W/kg



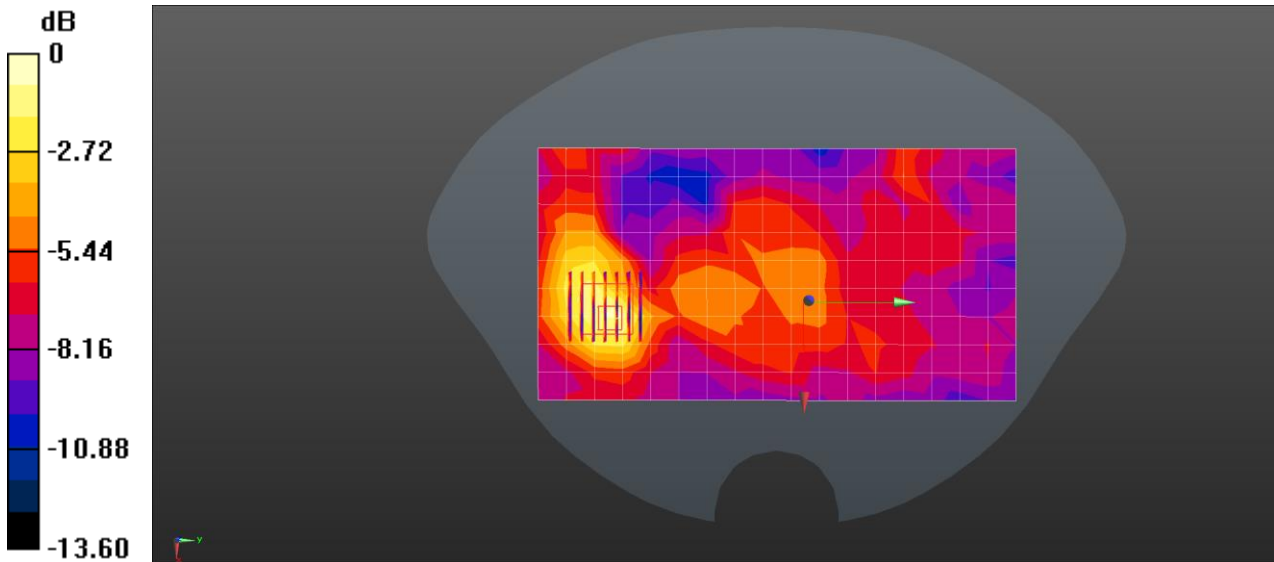
Body/Zoom Scan (7x7x7)/Cube 0: Measurement grid: dx=5mm, dy=5mm, dz=5mm

Reference Value = 2.458 V/m; Power Drift = 0.06 dB

Peak SAR (extrapolated) = 0.162 W/kg

SAR(1 g) = 0.030 W/kg; SAR(10 g) = 0.011 W/kg

Maximum value of SAR (measured) = 0.0395 W/kg



0 dB = 0.0395 W/kg = -14.03 dBW/kg

Date: 2023/4/18

Test Laboratory: SGS-CSTC Standards Technical Services Co., Ltd. Shenzhen Branch

Bluetooth GFSK Right side 0mm Ch78

DUT: A6650; Type: Smart Handheld Computer;

Communication System: BT; Frequency: 2480 MHz; Duty Cycle: 1:1

Medium parameters used: f = 2480 MHz; $\sigma = 1.827$ S/m; $\epsilon_r = 39.286$; $\rho = 1000$ kg/m³

Phantom section: Flat Section

Measurement Standard: DASY5 (IEEE/IEC/ANSI C63.19-2007)

DASY5 Configuration:

- Probe: EX3DV4 - SN3836; ConvF(7.27, 7.27, 7.27); Calibrated: 2022/6/27;
- Sensor-Surface: 3mm (Mechanical Surface Detection)
- Electronics: DAE4 Sn760; Calibrated: 2022/6/6
- Phantom: SAM1; Type: QD000P40CD; Serial: TP:1673
- Measurement SW: DASY52, Version 52.8 (4); SEMCAD X Version 14.6.8 (7028)

Body/Area Scan (6x18x1): Measurement grid: dx=12mm, dy=12mm



SGS-CSTC Standards Technical Services Co., Ltd.
Shenzhen Branch

Unless otherwise agreed in writing, this document is issued by the Company subject to its General Conditions of Service printed overleaf, available on request or accessible at <https://www.sgs.com/en/Terms-and-Conditions>. Attention is drawn to the limitation of liability, indemnification and jurisdiction issues defined therein. Any holder of this document is advised that information contained hereon reflects the Company's findings at the time of its intervention only and within the limits of Client's instructions, if any. The Company's sole responsibility is to its Client and this document does not exonerate parties to a transaction from exercising all their rights and obligations under the transaction documents. This document cannot be reproduced except in full, without prior written approval of the Company. Any unauthorized alteration, forgery or falsification of the content or appearance of this document is unlawful and offenders may be prosecuted to the fullest extent of the law. Unless otherwise stated the results shown in this test report refer only to the sample(s) tested and such sample(s) are retained for 30 days only.
Attention: To check the authenticity of testing /inspection report & certificate, please contact us at telephone: (86-755) 83071443, or email: CN.Doccheck@sgs.com

No.1 Workshop, M-10, Middle Section, Science & Technology Park, Nanshan District, Shenzhen, Guangdong, China 518057 t (86-755) 26012053 f (86-755) 26710594 www.sgs.com.cn
中国·广东·深圳市南山区科技园中区M-10栋1号厂房 邮编: 518057 t (86-755) 26012053 f (86-755) 26710594 sgs.china@sgs.com

Maximum value of SAR (measured) = 0.176 W/kg

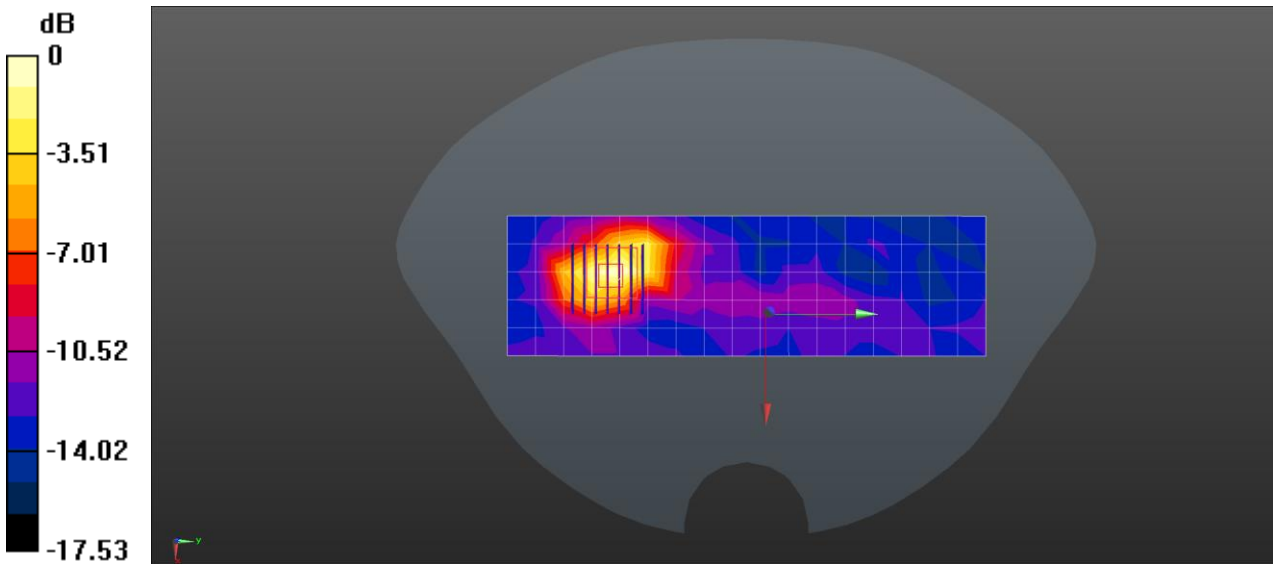
Body/Zoom Scan (7x7x7)/Cube 0: Measurement grid: dx=5mm, dy=5mm, dz=5mm

Reference Value = 2.584 V/m; Power Drift = -0.07 dB

Peak SAR (extrapolated) = 0.362 W/kg

SAR(1 g) = 0.124 W/kg; SAR(10 g) = 0.047 W/kg

Maximum value of SAR (measured) = 0.169 W/kg



0 dB = 0.169 W/kg = -7.72 dBW/kg

Date: 2023/4/19

Test Laboratory: SGS-CSTC Standards Technical Services Co., Ltd. Shenzhen Branch

WLAN5GHz 802.11ac 20M Back side 10mm Ch60

DUT: A6650; Type: Smart Handheld Computer;

Communication System: 5GWIFI; Frequency: 5300 MHz; Duty Cycle: 1:1

Medium parameters used: $f = 5300$ MHz; $\sigma = 4.722$ S/m; $\epsilon_r = 34.892$; $\rho = 1000$ kg/m³

Phantom section: Flat Section

Measurement Standard: DASY5 (IEEE/IEC/ANSI C63.19-2007)

DASY5 Configuration:

- Probe: EX3DV4 - SN3836; ConvF(5.26, 5.26, 5.26); Calibrated: 2022/6/27;
- Sensor-Surface: 2mm (Mechanical Surface Detection)
- Electronics: DAE4 Sn760; Calibrated: 2022/6/6
- Phantom: SAM1; Type: QD000P40CD; Serial: TP:1673
- Measurement SW: DASY52, Version 52.8 (4); SEMCAD X Version 14.6.8 (7028)



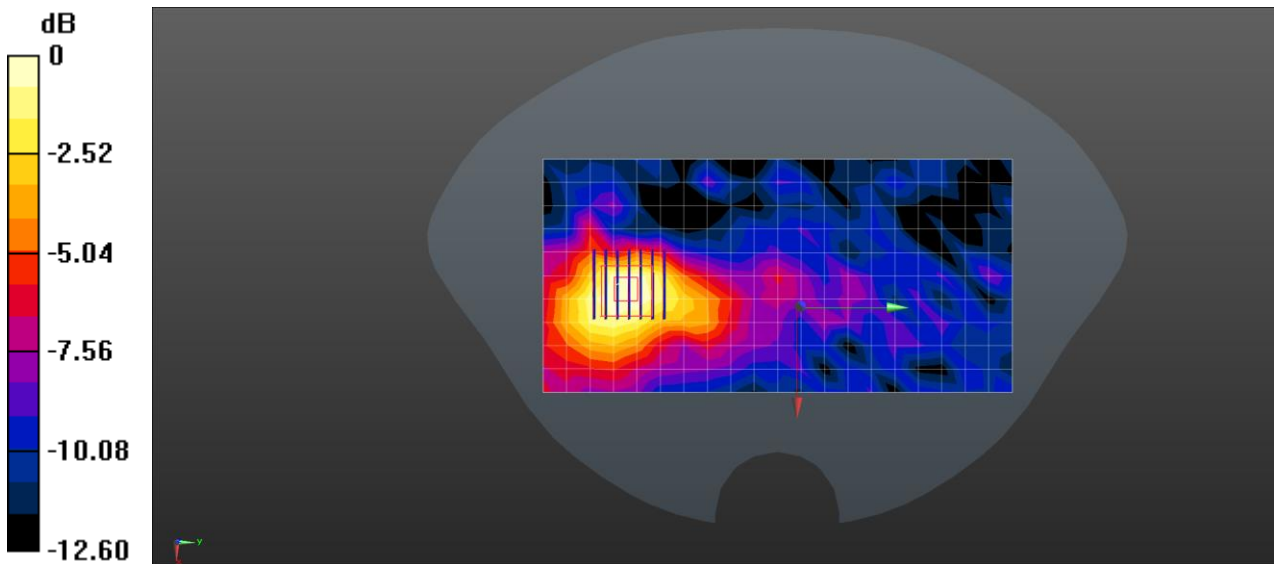
Body/Area Scan (11x21x1): Measurement grid: dx=10mm, dy=10mm
Maximum value of SAR (measured) = 0.481 W/kg

Body/Zoom Scan (7x7x7)/Cube 0: Measurement grid: dx=4mm, dy=4mm, dz=2mm
Reference Value = 4.385 V/m; Power Drift = 0.11 dB

Peak SAR (extrapolated) = 1.23 W/kg

SAR(1 g) = 0.344 W/kg; SAR(10 g) = 0.158 W/kg

Maximum value of SAR (measured) = 0.471 W/kg



0 dB = 0.471 W/kg = -3.27 dBW/kg

Date: 2023/4/19

Test Laboratory: SGS-CSTC Standards Technical Services Co., Ltd. Shenzhen Branch

WLAN5GHz 802.11ac 20M Front side 0mm Ch60

DUT: A6650; Type: Smart Handheld Computer;

Communication System: 5GWIFI; Frequency: 5300 MHz; Duty Cycle: 1:1

Medium parameters used: $f = 5300$ MHz; $\sigma = 4.722$ S/m; $\epsilon_r = 34.892$; $\rho = 1000$ kg/m³

Phantom section: Flat Section

Measurement Standard: DASY5 (IEEE/IEC/ANSI C63.19-2007)

DASY5 Configuration:

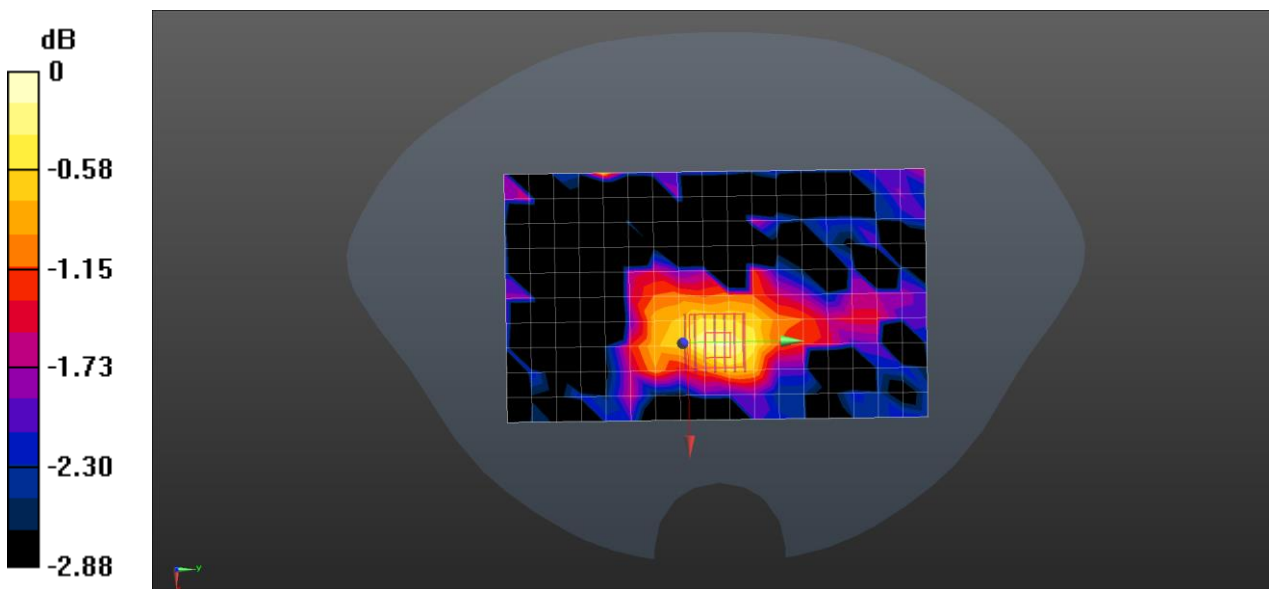
- Probe: EX3DV4 - SN3836; ConvF(5.26, 5.26, 5.26); Calibrated: 2022/6/27;
- Sensor-Surface: 2mm (Mechanical Surface Detection)
- Electronics: DAE4 Sn760; Calibrated: 2022/6/6
- Phantom: SAM1; Type: QD00P40CD; Serial: TP:1673



- Measurement SW: DASY52, Version 52.8 (4); SEMCAD X Version 14.6.8 (7028)

Body/Area Scan (11x21x1): Measurement grid: dx=10mm, dy=10mm
Maximum value of SAR (measured) = 0.407 W/kg

Body/Zoom Scan (7x7x7)/Cube 0: Measurement grid: dx=4mm, dy=4mm, dz=2mm
Reference Value = 8.526 V/m; Power Drift = 0.07 dB
Peak SAR (extrapolated) = 0.524 W/kg
SAR(1 g) = 0.662 W/kg; SAR(10 g) = 0.434 W/kg
Maximum value of SAR (measured) = 0.524 W/kg



0 dB = 0.524 W/kg = -2.81 dBW/kg

Date: 2023/4/20

Test Laboratory: SGS-CSTC Standards Technical Services Co., Ltd. Shenzhen Branch

WLAN5GHz 802.11ac 40M Back side 10mm Ch102

DUT: A6650; Type: Smart Handheld Computer;

Communication System: 5GWIFI; Frequency: 5510 MHz; Duty Cycle: 1:1

Medium parameters used (interpolated): $f = 5510 \text{ MHz}$; $\sigma = 5.112 \text{ S/m}$; $\epsilon_r = 34.159$; $\rho = 1000 \text{ kg/m}^3$

Phantom section: Flat Section

Measurement Standard: DASY5 (IEEE/IEC/ANSI C63.19-2007)

DASY5 Configuration:

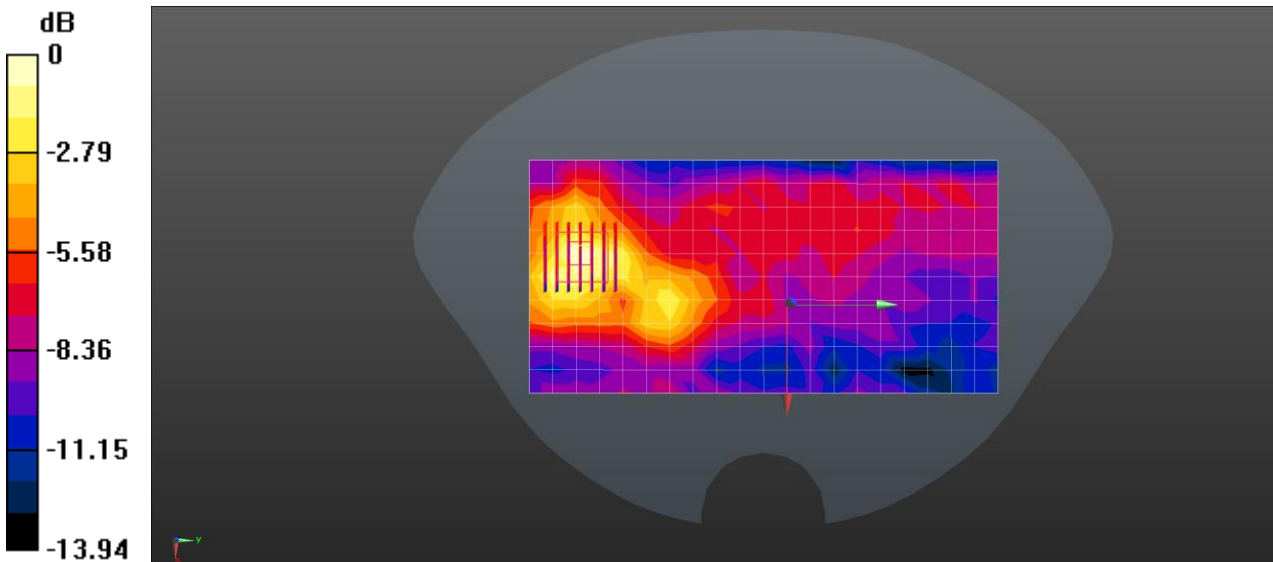
- Probe: EX3DV4 - SN3836; ConvF(4.7, 4.7, 4.7); Calibrated: 2022/6/27;
- Sensor-Surface: 2mm (Mechanical Surface Detection)
- Electronics: DAE4 Sn760; Calibrated: 2022/6/6
- Phantom: SAM1; Type: QD000P40CD; Serial: TP:1673



- Measurement SW: DASY52, Version 52.8 (4); SEMCAD X Version 14.6.8 (7028)

Body/Area Scan (11x21x1): Measurement grid: dx=10mm, dy=10mm
Maximum value of SAR (measured) = 0.821 W/kg

Body/Zoom Scan (7x7x7)/Cube 0: Measurement grid: dx=4mm, dy=4mm, dz=2mm
Reference Value = 4.870 V/m; Power Drift = 0.07 dB
Peak SAR (extrapolated) = 1.55 W/kg
SAR(1 g) = 0.564 W/kg; SAR(10 g) = 0.282 W/kg
Maximum value of SAR (measured) = 0.783 W/kg



0 dB = 0.783 W/kg = -1.06 dBW/kg

Date: 2023/4/20

Test Laboratory: SGS-CSTC Standards Technical Services Co., Ltd. Shenzhen Branch

WLAN5GHz 802.11ac 40M Back side 0mm Ch102

DUT: A6650; Type: Smart Handheld Computer;

Communication System: 5GWIFI; Frequency: 5500 MHz; Duty Cycle: 1:1

Medium parameters used (interpolated): $f = 5510$ MHz; $\sigma = 5.112$ S/m; $\epsilon_r = 34.159$; $\rho = 1000$ kg/m³

Phantom section: Flat Section

Measurement Standard: DASY5 (IEEE/IEC/ANSI C63.19-2007)

DASY5 Configuration:

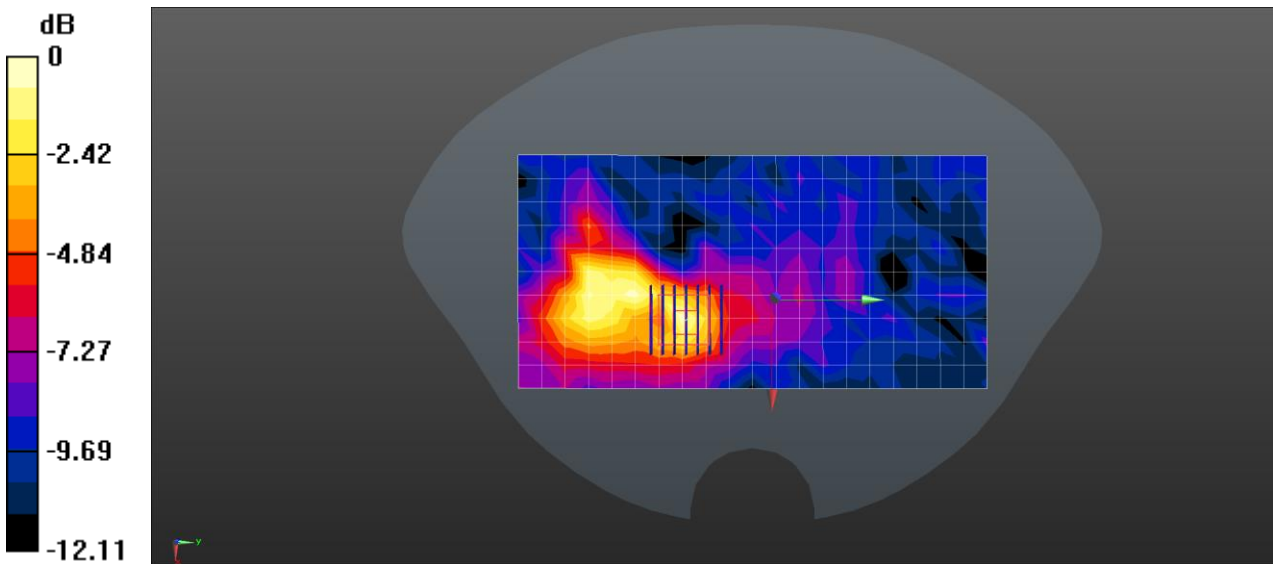
- Probe: EX3DV4 - SN3836; ConvF(4.7, 4.7, 4.7); Calibrated: 2022/6/27;
- Sensor-Surface: 2mm (Mechanical Surface Detection)
- Electronics: DAE4 Sn760; Calibrated: 2022/6/6



- Phantom: SAM1; Type: QD000P40CD; Serial: TP:1673
- Measurement SW: DASY52, Version 52.8 (4); SEMCAD X Version 14.6.8 (7028)

Body/Area Scan (11x21x1): Measurement grid: dx=10mm, dy=10mm
Maximum value of SAR (measured) = 0.764 W/kg

Body/Zoom Scan (7x7x7)/Cube 0: Measurement grid: dx=5mm, dy=5mm, dz=5mm
Reference Value = 5.942 V/m; Power Drift = -0.04 dB
Peak SAR (extrapolated) = 1.61 W/kg
SAR(1 g) = 0.689 W/kg; SAR(10 g) = 0.432 W/kg
Maximum value of SAR (measured) = 0.816 W/kg



0 dB = 0.816 W/kg = -0.88 dBW/kg

Date: 2023/4/21

Test Laboratory: SGS-CSTC Standards Technical Services Co., Ltd. Shenzhen Branch

WLAN5GHz 802.11ac 40M Back side 10mm Ch151

DUT: A6650; Type: Smart Handheld Computer;

Communication System: 5GWIFI; Frequency: 5755 MHz; Duty Cycle: 1:1

Medium parameters used (interpolated): $f = 5755 \text{ MHz}$; $\sigma = 5.203 \text{ S/m}$; $\epsilon_r = 33.991$; $\rho = 1000 \text{ kg/m}^3$

Phantom section: Flat Section

Measurement Standard: DASY5 (IEEE/IEC/ANSI C63.19-2007)

DASY5 Configuration:

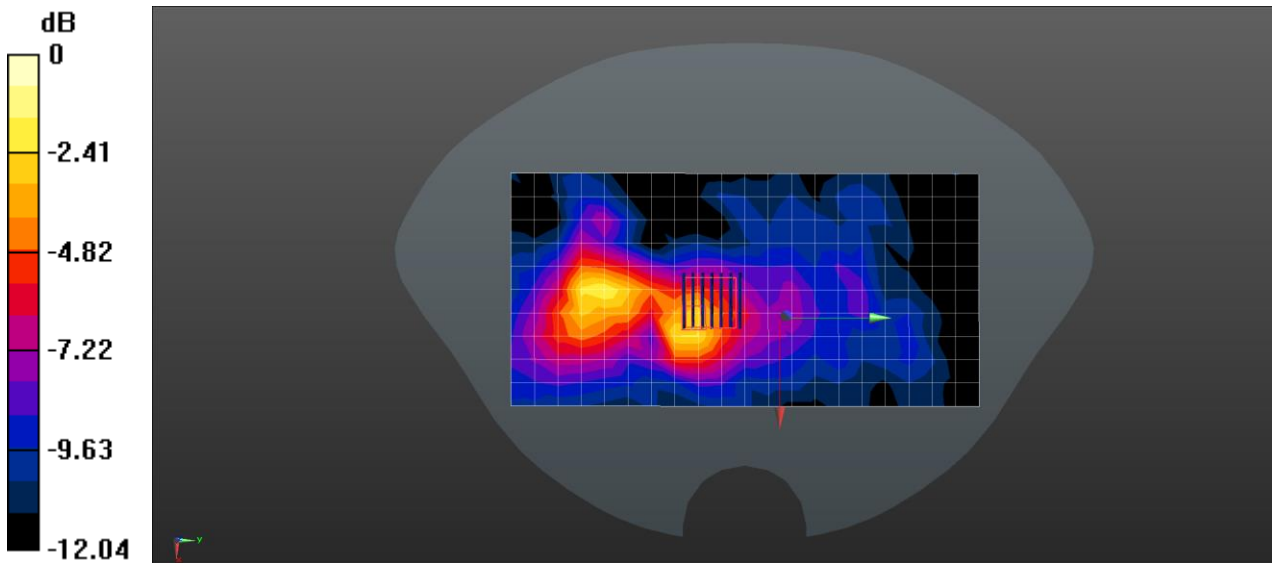
- Probe: EX3DV4 - SN3836; ConvF(4.78, 4.78, 4.78); Calibrated: 2022/6/27;
- Sensor-Surface: 2mm (Mechanical Surface Detection)



- Electronics: DAE4 Sn760; Calibrated: 2022/6/6
- Phantom: SAM1; Type: QD000P40CD; Serial: TP:1673
- Measurement SW: DASY52, Version 52.8 (4); SEMCAD X Version 14.6.8 (7028)

Body/Area Scan (11x21x1): Measurement grid: dx=10mm, dy=10mm
 Maximum value of SAR (measured) = 0.438 W/kg

Body/Zoom Scan (7x7x12)/Cube 0: Measurement grid: dx=4mm, dy=4mm, dz=2mm
 Reference Value = 5.110 V/m; Power Drift = -0.06 dB
 Peak SAR (extrapolated) = 1.71 W/kg
SAR(1 g) = 0.255 W/kg; SAR(10 g) = 0.071 W/kg
 Maximum value of SAR (measured) = 0.623 W/kg



0 dB = 0.623 W/kg = -2.06 dBW/kg



Test Laboratory: SGS-CSTC Standards Technical Services Co., Ltd. Shenzhen Branch

WLAN5GHz 802.11ac 40M Back side 0mm Ch151

DUT: A6650; Type: Smart Handheld Computer;

Communication System: 5GWIFI; Frequency: 5755 MHz; Duty Cycle: 1:1

Medium parameters used (interpolated): $f = 5755 \text{ MHz}$; $\sigma = 5.203 \text{ S/m}$; $\epsilon_r = 33.991$; $\rho = 1000 \text{ kg/m}^3$

Phantom section: Flat Section

Measurement Standard: DASYS (IEEE/IEC/ANSI C63.19-2007)

DASY5 Configuration:

- Probe: EX3DV4 - SN3836; ConvF(4.78, 4.78, 4.78); Calibrated: 2022/6/27;
- Sensor-Surface: 2mm (Mechanical Surface Detection)
- Electronics: DAE4 Sn760; Calibrated: 2022/6/6
- Phantom: SAM1; Type: QD00P40CD; Serial: TP:1673
- Measurement SW: DASY52, Version 52.8 (4); SEMCAD X Version 14.6.8 (7028)

Body/Area Scan (11x21x1): Measurement grid: $dx=10\text{mm}$, $dy=10\text{mm}$

Maximum value of SAR (measured) = 0.839 W/kg

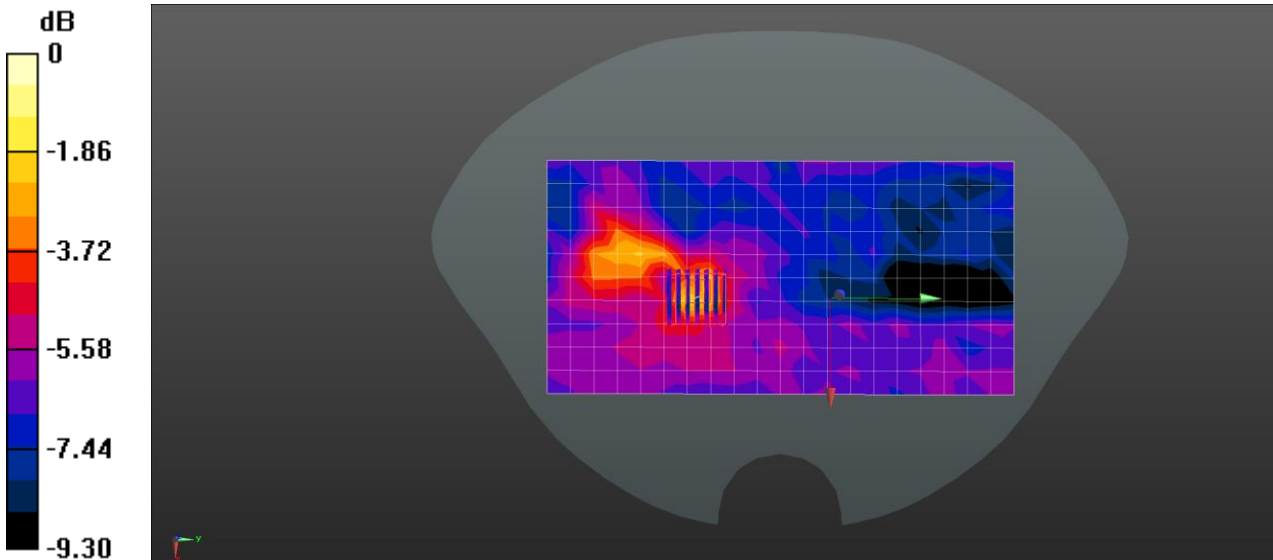
Body/Zoom Scan (7x7x12)/Cube 0: Measurement grid: $dx=4\text{mm}$, $dy=4\text{mm}$, $dz=2\text{mm}$

Reference Value = 8.880 V/m; Power Drift = 0.18 dB

Peak SAR (extrapolated) = 3.33 W/kg

SAR(1 g) = 0.760 W/kg; SAR(10 g) = 0.416 W/kg

Maximum value of SAR (measured) = 1.25 W/kg



0 dB = 1.25 W/kg = 0.97 dBW/kg





SGS-CSTC Standards Technical Services Co., Ltd. Shenzhen Branch

SZEMC-TRF-01 Rev. A/0 Aug01,2022

Report No.: SZCR230200035201

Page: 148 of 148

Appendix C: Calibration certificate

Appendix D: Photographs

---END---



SGS-CSTC Standards Technical Services Co., Ltd.
Shenzhen Branch Technical Services Laboratory

Unless otherwise agreed in writing, this document is issued by the Company subject to its General Conditions of Service printed overleaf, available on request or accessible at <https://www.sgs.com/en/Terms-and-Conditions>. Attention is drawn to the limitation of liability, indemnification and jurisdiction issues defined therein. Any holder of this document is advised that information contained hereon reflects the Company's findings at the time of its intervention only and within the limits of Client's instructions, if any. The Company's sole responsibility is to its Client and this document does not exonerate parties to a transaction from exercising all their rights and obligations under the transaction documents. This document cannot be reproduced except in full, without prior written approval of the Company. Any unauthorized alteration, forgery or falsification of the content or appearance of this document is unlawful and offenders may be prosecuted to the fullest extent of the law. Unless otherwise stated the results shown in this test report refer only to the sample(s) tested and such sample(s) are retained for 30 days only.

Attention: To check the authenticity of testing /inspection report & certificate, please contact us at telephone: (86-755) 83071443, or email: CN.Doccheck@sgs.com

No.1 Workshop, M-10, Middle Section, Science & Technology Park, Nanshan District, Shenzhen, Guangdong, China 518057 t (86-755) 26012053 f (86-755) 26710594 www.sgs.com.cn
中国·广东·深圳市南山区科技园中区M-10栋1号厂房 邮编: 518057 t (86-755) 26012053 f (86-755) 26710594 sgs.china@sgs.com