



Advanced Card Systems Ltd.
Card & Reader Technologies

ACR1555

ACR1555U NFC Bluetooth® Reader

User Manual V1.02



Table of Contents

1.0.	Introduction	3
2.0.	For Windows®	4
2.1.	Installing ACS Unified Bluetooth driver.....	4
2.2.	Setting up device pairing with built-in Bluetooth adapter.....	7



1.0. Introduction

ACR1555U NFC Bluetooth® Reader combines the latest technology in the world of smart card readers with Bluetooth connectivity. This compact and wireless smart card reader brings together sophisticated technology with fresh design to meet different requirements in various smart card-based applications using Bluetooth-enabled devices, such as smart phones and tablets.

This document provides general procedures for installation of drivers and applications when using ACR1555U NFC Bluetooth® Reader .

Topics covered in this user manual are as follows:

- **Section 2.0** – provides procedures on how to install ACS Bluetooth driver, pair Bluetooth devices

2.0.

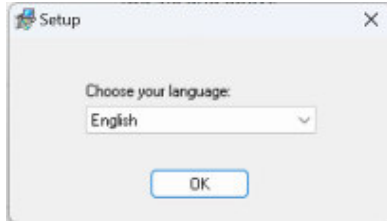


2.0. For Windows®

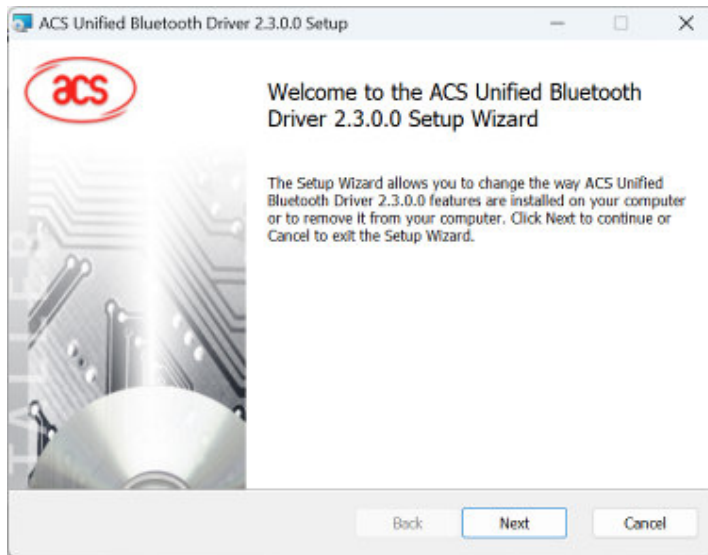
2.1. Installing ACS Unified Bluetooth driver

To install the driver:

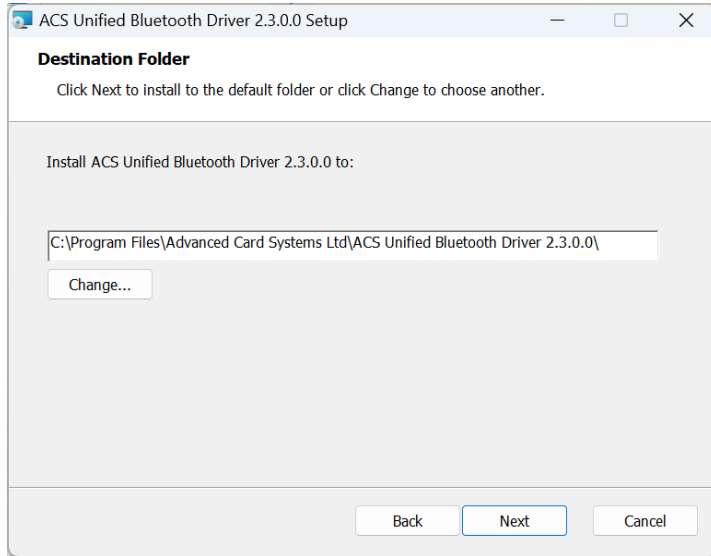
1. Run the **ACS Unified Bluetooth Driver**.
2. The Setup Wizard will appear. To start the installation, click **OK**.



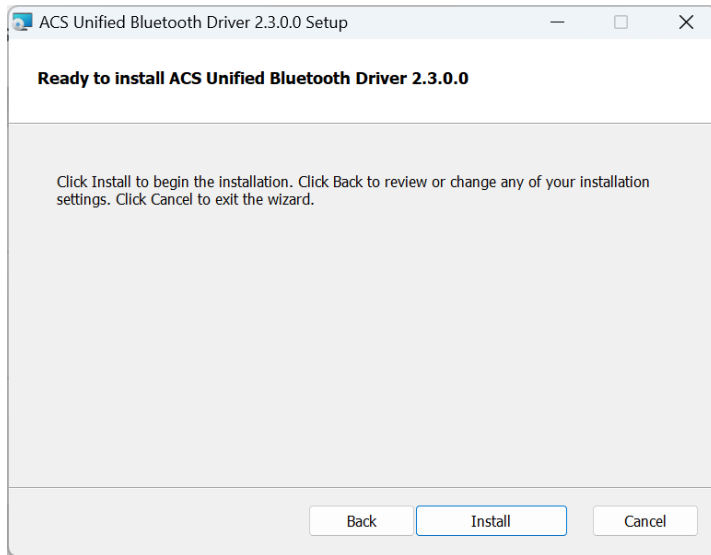
3. Then click **Next**.



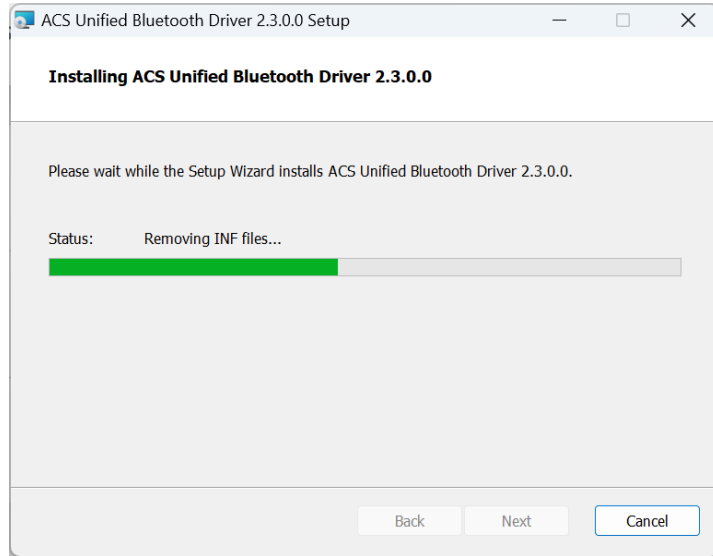
4. Click **Next** to install the driver to the default destination, located at **X:\Program Files\Advanced Card Systems Ltd\ACS Unified Bluetooth Driver 2.3.0.0**, with **X** being your local Windows drive.



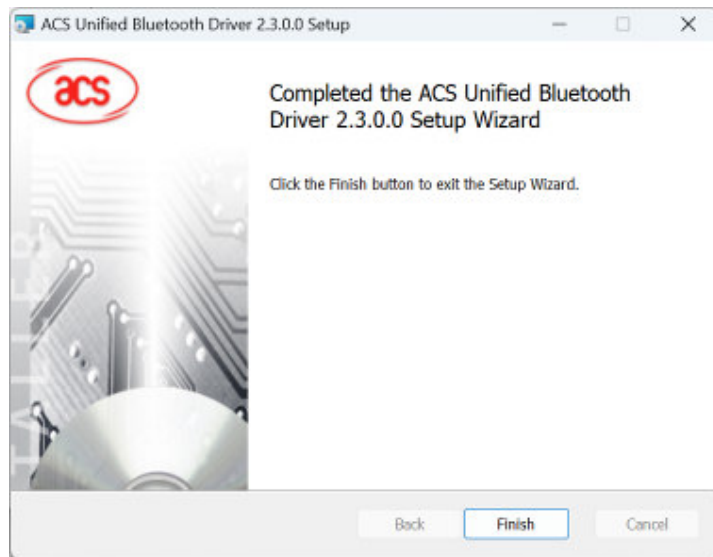
5. Click **Install**.



6. Wait while the driver installs.



7. Once the installation is complete, click **Finish**.






2.2. Setting up device pairing with built-in Bluetooth adapter

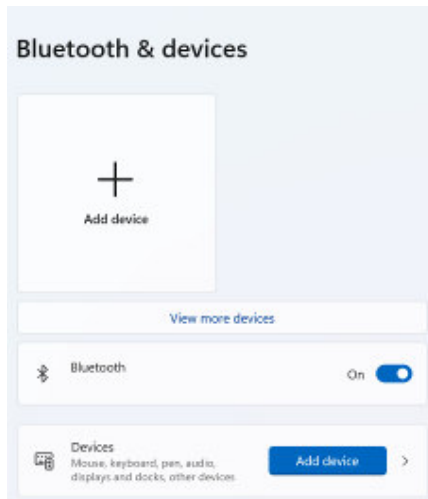
Note: This procedure only applies to Windows 8 and later. Windows 7 does not support devices using Bluetooth 5.3/Bluetooth Low Energy interface.

To pair using this setup:

1. Turn on the ACR1555 by press and hold the power button in 3 sec. the Blue LED will being blinking and enter the Bluetooth mode. If the Blue LED is not blinking, you can press and hold the Mode button at 3 sec to enter Bluetooth mode.



2. Go to **Settings**  choose **Bluetooth & devices**,
3. Turn on **Bluetooth**.
4. Click **Add device**



5. At the **Add a device** pane, click **Bluetooth** and select an **ACR1555** reader to pair.

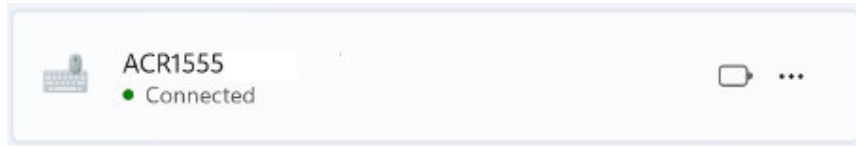


6. Press again the Mode button to complete the Bonding process.

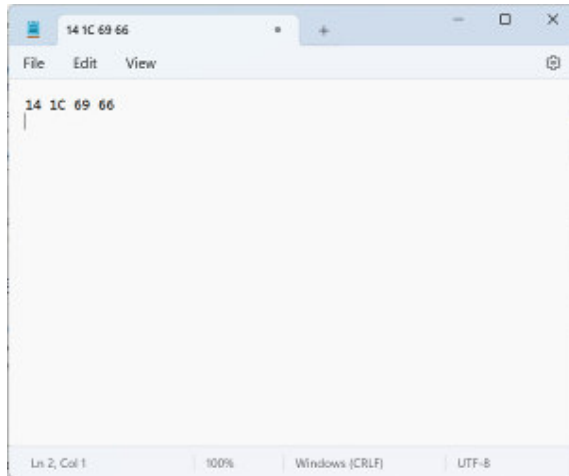




- The pairing is complete when you see that the ACR1555 is connected.



- The ACR1555 start with HID mode. Please open the notepad to display the card information when you bring the NFC closer to the reader.



Android is a trademark of Google LLC.
The *Bluetooth*® word, mark and logos are registered trademarks owned by Bluetooth SIG, Inc. and any use of such marks by Advanced Card Systems Ltd. is under license.
Windows is a registered trademark of Microsoft Corporation in the United States and/or other countries.



FCC Caution:

Any Changes or modifications not expressly approved by the party responsible for compliance could void the user's authority to operate the equipment.

This device complies with part 15 of the FCC Rules. Operation is subject to the following two conditions: (1) This device may not cause harmful interference, and (2) this device must accept any interference received, including interference that may cause undesired operation.

IMPORTANT NOTE:

Note: This equipment has been tested and found to comply with the limits for a Class B digital device, pursuant to part 15 of the FCC Rules. These limits are designed to provide reasonable protection against harmful interference in a residential installation. This equipment generates, uses and can radiate radio frequency energy and, if not installed and used in accordance with the instructions, may cause harmful interference to radio communications. However, there is no guarantee that interference will not occur in a particular installation. If this equipment does cause harmful interference to radio or television reception, which can be determined by turning the equipment off and on, the user is encouraged to try to correct the interference by one or more of the following measures:

- Reorient or relocate the receiving antenna.
- Increase the separation between the equipment and receiver.
- Connect the equipment into an outlet on a circuit different from that to which the receiver is connected.
- Consult the dealer or an experienced radio/TV technician for help.

FCC Radiation Exposure Statement:

This equipment complies with FCC radiation exposure limits set forth for an uncontrolled environment. This equipment should be installed and operated with minimum distance 20cm between the radiator & your body.