

## SERVICE AND SUPPORT

### Customer Service

Digital Signature Inc  
1221 E. Dyer Road, Suite 290  
Santa Ana, CA 92705 USA  
866-903-4453

For service outside the USA, please visit [www.mintds.com/service](http://www.mintds.com/service) for the nearest dealer or service location.

### Warranty Registration

To register your Digital Signature Mint Digital Music Station, complete the enclosed warranty card or register online at [www.mintds.com/service/registration](http://www.mintds.com/service/registration).

### Warranty Service

Go to [www.mintds.com/service](http://www.mintds.com/service) for instructions on how to obtain warranty service.

Copyright © 2008 Digital Signature, Incorporated. All rights reserved. Digital Signature, Mint, and Di-Fi are trademarks of Digital Signature. iPod and Mac are trademarks of Apple, Inc., registered in the United States and/or other countries. PurePath Digital is a trademark of Texas Instruments Incorporated. Peerless is a trademark of Tymphany Corporation. Certain other product names, brand names and company names may be trademarks or designations of their respective owners. Specifications are subject to change without prior notice. Not responsible for typographical errors. iPod not included.

## SERVICIO Y ASISTENCIA TÉCNICA

### Servicio al cliente

Digital Signature Inc  
1221 E. Dyer Road, Suite 290  
Santa Ana, CA 92705 USA  
866-903-4453

Para servicio fuera de los Estados Unidos, por favor, visite [www.mintds.com/service](http://www.mintds.com/service) donde encontrará el concesionario u oficina de servicios más cercana a su localidad.

### Registro de la garantía

Para registrar su Digital Signature Mint Digital Music Station, llene la tarjeta de garantía incluida en el empaque o regístrese en línea en [www.mintds.com/service/registration](http://www.mintds.com/service/registration).

### Servicio de garantía

Visite [www.mintds.com/service](http://www.mintds.com/service) para instrucciones acerca de cómo obtener servicio de garantía.

Copyright © 2008 Digital Signature, Incorporated. Todos los derechos reservados. Digital Signature, Mint, y Di-Fi son marcas comerciales de Digital Signature. iPod y Mac son marcas comerciales de Apple, Inc., registradas en los Estados Unidos y/o otros países. PurePath Digital es una marca comercial de Texas Instruments Incorporated. Peerless es una marca comercial de Tymphany Corporation. Otros nombres de productos, nombres de marcas y nombres de compañía pudieran corresponder a las marcas o designaciones comerciales de sus respectivos propietarios. Las especificaciones están sujetas a cambios sin previo aviso. No asumimos responsabilidades por errores tipográficos. No se incluye el equipo iPod.

## RÉPARATION ET ASSISTANCE

### Service après-vente

Digital Signature Inc  
1221 E. Dyer Road, Suite 290  
Santa Ana, CA 92705 USA  
866-903-4453

Pour une réparation en dehors des États-Unis, veuillez consulter le site [www.mintds.com/service](http://www.mintds.com/service) afin de localiser le revendeur ou le centre d'entretien le plus proche.

### Enregistrement de la garantie

Pour enregistrer la garantie de votre console de musique numérique Digital Signature Mint, remplissez la carte de garantie ci-jointe ou effectuez cet enregistrement en ligne à l'adresse [www.mintds.com/service/registration](http://www.mintds.com/service/registration).

### Service de garantie

Rendez-vous sur le site [www.mintds.com/service](http://www.mintds.com/service) où vous trouverez les instructions concernant l'obtention du service de garantie.

Droits d'auteur © Digital Signature, Incorporated, 2008. Tous droits réservés. Digital Signature, Mint et Di-Fi sont des marques de Digital Signature. iPod et Mac sont des marques d'Apple, Inc. déposées aux États-Unis et/ou dans d'autres pays. PurePath Digital est une marque de Texas Instruments Incorporated. Peerless est une marque de Tymphany Corporation. Certains autres noms de produits, de marques et de compagnies peuvent être des marques déposées ou des désignations de leur propriétaire respectif. Les spécifications sont sujettes à modification sans préavis. Toute responsabilité est déclinée en cas d'erreur typographique. Ne concerne pas iPod.



DMS300-PWA1  
P/N 1400122 REV. 1.0

MINT™ 220

## WIRELESS DIGITAL MUSIC STATION USER GUIDE



# IMPORTANT SAFETY INSTRUCTIONS

To reduce the risk of shock and prevent damage to the Digital Signature™ Mint™ Digital Music Station, to yourself or to your property follow these safety precautions:

1. Read these instructions.
2. Keep these instructions.
3. Heed all warnings.
4. Follow all instructions.
5. Do not use this apparatus near water.
6. Clean only with dry cloth. Unplug the system first.
7. Do not block any ventilation openings. Install in accordance with the manufacturer's instructions.
8. Do not install near any heat sources such as radiators, heat registers, stoves, or other apparatus (including amplifiers) that produce heat. Do not place an open flame, such as a candle, near the system.
9. Do not defeat the safety purpose of the polarized or grounding-type plug. A polarized plug has two blades with one wider than the other. A grounding type plug has two blades and a third grounding prong. The wide blade or the third prong are provided for your safety. If the provided plug does not fit into your outlet, consult an electrician for replacement of the obsolete outlet. The power cord included for the Mint amplifier is a polarized plug. Do not force the prongs into an outlet that is not designed for two sizes of prongs or use non-polarized adapters. Always avoid over-loading wall outlets, extension cords or power strips.
10. Protect the power cord from being walked on or pinched particularly at plugs, convenience receptacles, and the point where they exit from the apparatus. Do not operate the system with a damaged power cord. To avoid damage, do not place items on top of the power cord or position it where someone might trip.
11. Only use attachments/accessories specified by the manufacturer. Make no modifications to the system or accessories. Unauthorized alterations may compromise safety, regulatory compliance and system performance—as well as negate your warranty.

**WARNING: TO REDUCE THE RISK OF FIRE OR ELECTRIC SHOCK, DO NOT EXPOSE THIS APPARATUS TO RAIN OR MOISTURE.**

12. Use only with the cart, stand, tripod, bracket, or table specified by the manufacturer, or sold with the apparatus. When a cart is used, use caution when moving the cart/apparatus combination to avoid injury from tip-over.
13. Unplug this apparatus during lightning storms or when unused for long periods of time.
14. Refer all servicing to qualified service personnel. Servicing is required when the apparatus has been damaged in any way, such as power-supply cord or plug is damaged, liquid has been spilled or objects have fallen into the apparatus, the apparatus has been exposed to rain or moisture, does not operate normally, or has been dropped.
15. Do not expose this apparatus to dripping or splashing and ensure that no objects filled with liquids, such as vases, are placed on the apparatus. Do not operate the Mint outdoors.
16. To completely disconnect this apparatus from the AC Mains, disconnect the power supply cord plug from the AC receptacle.
17. The mains plug of the power supply cord shall remain readily operable.



CAUTION		
RISK OF ELECTRICAL SHOCK DO NOT OPEN		
CAUTION: TO REDUCE THE RISK OF ELECTRIC SHOCK, DO NOT REMOVE COVER (OR BACK). NO USER-SERVICEABLE PARTS INSIDE. REFER SERVICING TO QUALIFIED SERVICE PERSONNEL.	THE LIGHTNING FLASH WITH ARROWHEAD WITHIN THE TRIANGLE ALERTS YOU TO UNINSULATED "DANGEROUS VOLTAGE" WITHIN THE PRODUCT THAT MAY CONSTITUTE RISK OF ELECTRIC SHOCK.	THE EXCLAMATION POINT WITHIN THE TRIANGLE ALERTS YOU TO IMPORTANT OPERATING AND MAINTENANCE (SERVICING) INSTRUCTIONS ACCOMPANYING THE PRODUCT.
SEE MARKING ON BOTTOM OF PRODUCT		

## FCC COMPLIANCE STATEMENT

This device complies with part 15 of the FCC Rules. Operation is subject to the following two conditions:

1. This device may not cause harmful interference, and
2. This device must accept any interference received, including interference that may cause undesired operation.

This equipment has been tested and found to comply with the limits for a Class B digital device, pursuant to part 15 of the FCC Rules. These limits are designed to provide reasonable protection against harmful interference in a residential installation. This equipment generates, uses and can radiate radio frequency energy and, if not installed and used in accordance with the instructions, may cause harmful interference to radio communications. However, there is no guarantee that interference will not occur in a particular installation.

If this equipment does cause harmful interference to radio or television reception, which can be determined by turning the equipment off and on, the user is encouraged to try to correct the interference by one or more of the following measures:

- Reorient or relocate the receiving antenna.
- Increase the separation between the equipment and receiver.
- Connect the equipment into an outlet on a circuit different from which the receiver is connected.
- Consult your Digital Signature dealer or an experienced electronics technician, or go online to [www.mintds.com/service](http://www.mintds.com/service) for additional help and setup assistance.

This product complies with the Canadian ICES-003 Class B specifications.

## TABLE OF CONTENTS

<b>INTRODUCTION</b>	
Mint 220 Wireless Digital Music Station.....	4
<b>SETUP</b>	
Unpacking .....	5
Power Connection .....	6
iPod Connection .....	6
Line-in Connection .....	6
Wireless Connection .....	7
<b>OPERATION</b>	
Input Selection .....	8
Volume Control .....	8
EQ Control .....	8
Remote Control .....	8
<b>MAINTENANCE AND SUPPORT</b>	
Troubleshooting.....	9
Battery Replacement.....	9
Tech Support and Repair Service.....	10

## MINT 220 WIRELESS DIGITAL MUSIC STATION

Thank you for choosing the Digital Signature Mint 220 Wireless Digital Music Station. You have selected high quality audio station that is designed to play all of today's music formats.

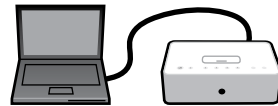
### iPod in Dock

- All types of iPods (except iPod shuffle which is connected via Line In) fit in the iPod dock when used with your appropriate
- iPod dock insert.
- iPhone will play music in an airplane mode.
- iPod and iPhone are charged when docked.



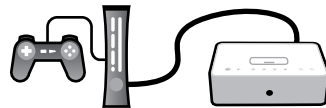
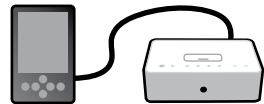
### PC or Mac with Mint USB Audio Transmitter

- Once the Transmitter is plugged into the USB port of your computer, it will stream sound wirelessly to Mint 220.
- You can enjoy your favorite music, video and games from your computer with Mint high-quality audio system.



### Games, MP3 players, CD Players and More thru Line-In

- iPod shuffle, Zune and other MP3 players; Portable CD players and games; or XM and Sirius satellite radios could be connected with two end 1/8 in mini headphone jacks.
- TV or gaming consoles with RCA connectors could be connected with RCA to 1/8 in mini headphone jack adaptor.



## UNPACKING

Unpack carefully and check all parts:

- A Mint 220 Speaker System
- B Mint Wireless USB Audio Transmitter
- C Mint Remote Control
- D AC Adaptor
- E Power Cord



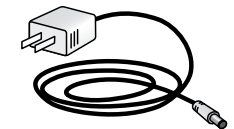
A



B



C



D

**SYSTEM SETUP**

**Power Connection**

1. Insert round shape connector of AC adaptor to marked “DC-in” port.
2. Insert the small connector of power cord into AC adaptor.
3. Plug the power cord into a wall outlet.

Figure: Plugging power

**iPod Connection**

1. Before plugging iPod, locate the appropriate iPod adaptor insert shipped with your iPod purchase.
2. If you cannot find the proper adaptor, visit [www.mintdsi.com](http://www.mintdsi.com) to find and purchase the right one.
3. Insert the adaptor into the dock.
4. Plug iPod into the dock with the adaptor.
5. Mint 220 automatically detects when an iPod is plugged and changes input mode to iPod.
6. You are ready to listen to the music from iPod.

**Line-in Connection**

Line-In port provides connectivity with broad ranges of music and gaming devices that are equipped with mini 1/8 in (3.5 mm) audio line-out or RCA type stereo out (Figure: Mini Jack and RCA connector).

1. Select the correct cable for the device that you want to connect.
  - A. Portable devices such as MP3 players, CD players, games and small TVs are likely to accept mini stereo connector.
  - B. Larger devices such as TVs, gaming consoles and setup boxes commonly use RCA type connectors.
  - C. Mini jack to mini jack or RCA to mini jack cables are not included. This cable could be purchased at electronic retail stores or please visit [www.mintdsi.com](http://www.mintdsi.com) to purchase online.
2. Plug the mini stereo connector into Line-in port on the back of the Mint 220.
3. Plug the other side of connector into the device that you want to connect.
  - A. For RCA connector, plug the two connectors into RCA ports: white connector for white port and red connector to red port (Figure: Mini stereo to Line-in connection).
  - B. For mini stereo connector, plug the mini connector into 1/8 in headphone port (Figure: RCA stereo out to Line-in connection).
4. Select Line-In by pushing “Input Button” on the left side of the iPod dock until the front LED for Line-in “Picture of Line-In symbol” is lit, or simply push the Line-In button on the remote control.
5. You are ready

Figure: Plugging power

**Wireless Connection**

**For PC connection,**

1. Plug Mint wireless USB Audio Transmitter into USB port and wait until “New Hardware Found” message appears on lower right corner of your PC screen. It will take about 30 seconds.
2. PC automatically selects the Mint USB audio as the default audio device. It is recommended that you verify this automatic audio setting.
  - A. Open Sound and Audio Devices in control panel (Figure: Sounds and Audio Devices).
  - B. Click Volume tab, and verify that Mint USB audio is selected as the default audio device.
3. Select Wireless Audio by pushing the Input Button on the left side of the iPod dock until the front LED for Wireless mode “Picture of Wireless Audio symbol” is lit, or simply push the Wireless Audio button on the remote control.
4. You are ready to enjoy any audio from your PC wirelessly through Mint 220 Wireless Digital Music Station .



**For Mac connection,**

1. Plug the Mint USB Audio Transmitter into USB port.
2. Open Sound folder in System Preference (Figure: Sound Preference). Under Output tab, select Mint USB Audio as your sound output.
3. Select Wireless Audio by pushing the Input button on the left side of the iPod dock until the front Wireless mode LED “Picture of Wireless Audio symbol” is lit, or simply push the Wireless Audio button on the remote control.
4. You are ready to enjoy any audio from your Mac wirelessly through Mint 220 Wireless Digital Music Station .

When you reconnect Mint wireless USB Audio Transmitter to your computer, it is recommended that you follow this procedure.



Figure: Plugging power



**Input Selection**

Mint 220 has three different audio in sources: iPod, Line-in, and Wireless. There are two ways to select input modes:

1. You can select any of these input modes by pushing the input button on the Mint 220 until the symbol of the input mode that you want is lit on the LED indicator on the front of the iPod dock.
2. Or, you can push one of the three input buttons on the Mint remote control to select the mode you want and your selected input mode will be lit on the LED indicator.

Mint 220 is specially designed to slowly ramp up the volume within two seconds when input mode is changed; this is to ensure that the new sound input does not suddenly disrupt your environment.

**Volume Control**

The volume can be easily controlled by the volume up and down buttons on either Mint 220 Speaker System or Mint Remote Control.

**EQ Control**

Your Mint 220 Wireless Digital Music Station comes with built-in Sound Equalization setting and offers deep to high ranges of fidelity sound. EQ setting can be turned On or Off by simply pushing the EQ button on the Mint Remote Control. The EQ mode will be lit on the front LED indicator when it is turned On.

**Equalization provides two modes of sound:**

- Off mode: Provides high quality sound as close as it is intended to be recorded (clear Mid to High range)
- On mode: Provides more bass and clearer highs.

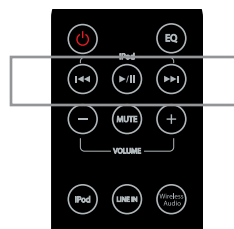
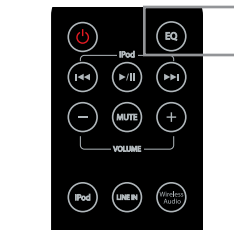
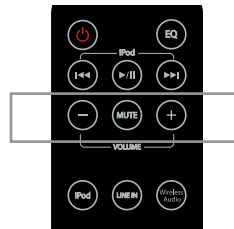
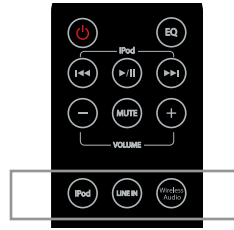
**Remote Control**

Provides you with the convenience of controlling all the functions of Mint 220 system from up to 25 feet away and two additional sound features:

- Mute: Mute the speaker sound instantly
- EQ: Turn On and off the built-in Equalizer

**iPod control functions**

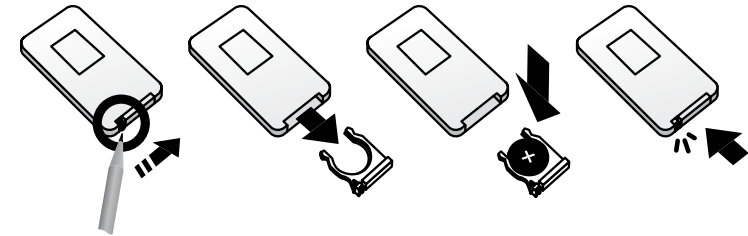
- Play/Pause: press once to pause play and again to resume.
- Skip forward: press to skip to the next track.
- Skip backward: press once to go back to the beginning of the current track, twice to skip to the beginning of the previous track.



**Battery Replacement**

If the Mint Remote Control stops operating normally or its operation range seems to be reduced, replace the battery.

1. Place the tip of a pencil in the small slot at the bottom of the remote. Pull the tray open.
2. Replace with a CR2025 3-volt lithium battery.
3. Push the tray closed until it clicks into its place.



**Pairing**

Pairing is a procedure in which your Mint 220 Speaker System identifies your Mint USB Audio Transmitter to work together wirelessly, like other wireless operating computer devices such as wireless keyboard and mouse. Your Mint 220 is already paired with your Mint USB Audio Transmitter and pairing procedure should be only used when wireless transmission does not work properly. The Wireless input indicator on the LED will blink continuously if Pairing needs to be performed.

1. Push the Connect button on the back of Mint 220 Speaker System for about 3 seconds (Figure: Mint 220 Connect button).
2. Plug the Mint USB Transmitter into a USB port of PC or Mac.
3. Push the Connect button located on the top of the Mint USB Audio Transmitter (Figure: Mint USB Connect button).
4. Verify that Wireless input symbol stops blinking which means the pairing is completed.

Figure: Connect button of Mint 220 & Connect button of USB Transmitter

PROBLEM	SOLUTION
<b>No sound</b>	<ol style="list-style-type: none"> <li>1. Check the power connection.</li> <li>2. Make sure that the input selection is set correct by checking the front LED indicator and the your selected input mode light is on. For example, if your sound source is iPod, iPod input should be lit.</li> <li>3. Check the connections between the music source and the Mint 220 Speaker System.               <ol style="list-style-type: none"> <li>A. For an iPod, make sure it is properly seated in the dock.</li> <li>B. For a Line-In, make sure both end of connected cable are firmly connected.</li> <li>C. For a wireless audio, unplug USB from USB port and follow the wireless connection procedure on page <b>TBD</b>.</li> </ol> </li> <li>4. Make sure that your music source is turned on and any music is selected to play.</li> <li>5. Turn up the volume. Make sure that mute is not selected on any of your input source, such as Mint Remote Control, mute from your computer's audio setting, mute from your gaming device, etc.</li> </ol>
<b>No proper insert or adaptor for iPod docking</b>	If you cannot locate a proper iPod adaptor shipped with your iPod purchase, visit <a href="http://www.mintdsi.com">www.mintdsi.com</a> to find the right one and purchase.
<b>Blinking Wireless Audio LED Indicator</b>	<ol style="list-style-type: none"> <li>1. Make sure Mint USB Audio Transmitter is properly plugged in your computer's USB port.</li> <li>2. If it was not plugged in properly, plug and wait until the Wireless Audio LED indicator of Mint 220 Speaker System stops blinking.</li> <li>3. If it is still blinking, follow the pairing procedure on page <b>TBD</b>.</li> <li>4. If you cannot fix this, please contact our customer service.</li> </ol>
<b>No sound from wireless PC/Mac connection</b>	<ol style="list-style-type: none"> <li>1. Make sure the Wireless Audio LED indicator is not blinking.</li> <li>2. If it is blinking, follow the procedure of "Blinking wireless audio LED indicator".</li> <li>3. Make sure the connected computer is not in mute or at a very low volume.</li> <li>4. If you cannot fix this, please contact our customer service.</li> </ol>
<b>Speaker sound is not loud enough</b>	Increase the volume on selected input devices: <ol style="list-style-type: none"> <li>A. Computer with Mint USB Audio Transmitter.</li> <li>B. Other devices connected thru Line-In.</li> </ol>

## TECH SUPPORT AND REPAIR SERVICE

Call toll free number for technical support: **866-xxx-xxxx**, or  
 Visit [www.mintdsi.com/support](http://www.mintdsi.com/support)

**CAUTION**

Changes or modifications not expressly approved by the party responsible for compliance could void the user's authority to operate the equipment.

**WARNING**

This equipment complies with FCC RF radiation exposure limits set forth for an uncontrolled environment.

This equipment should be installed and operated with a minimum distance of 20 centimeters between the radiator and your body.

This transmitter must not be co-located or operating in conjunction with any other antenna or transmitter.