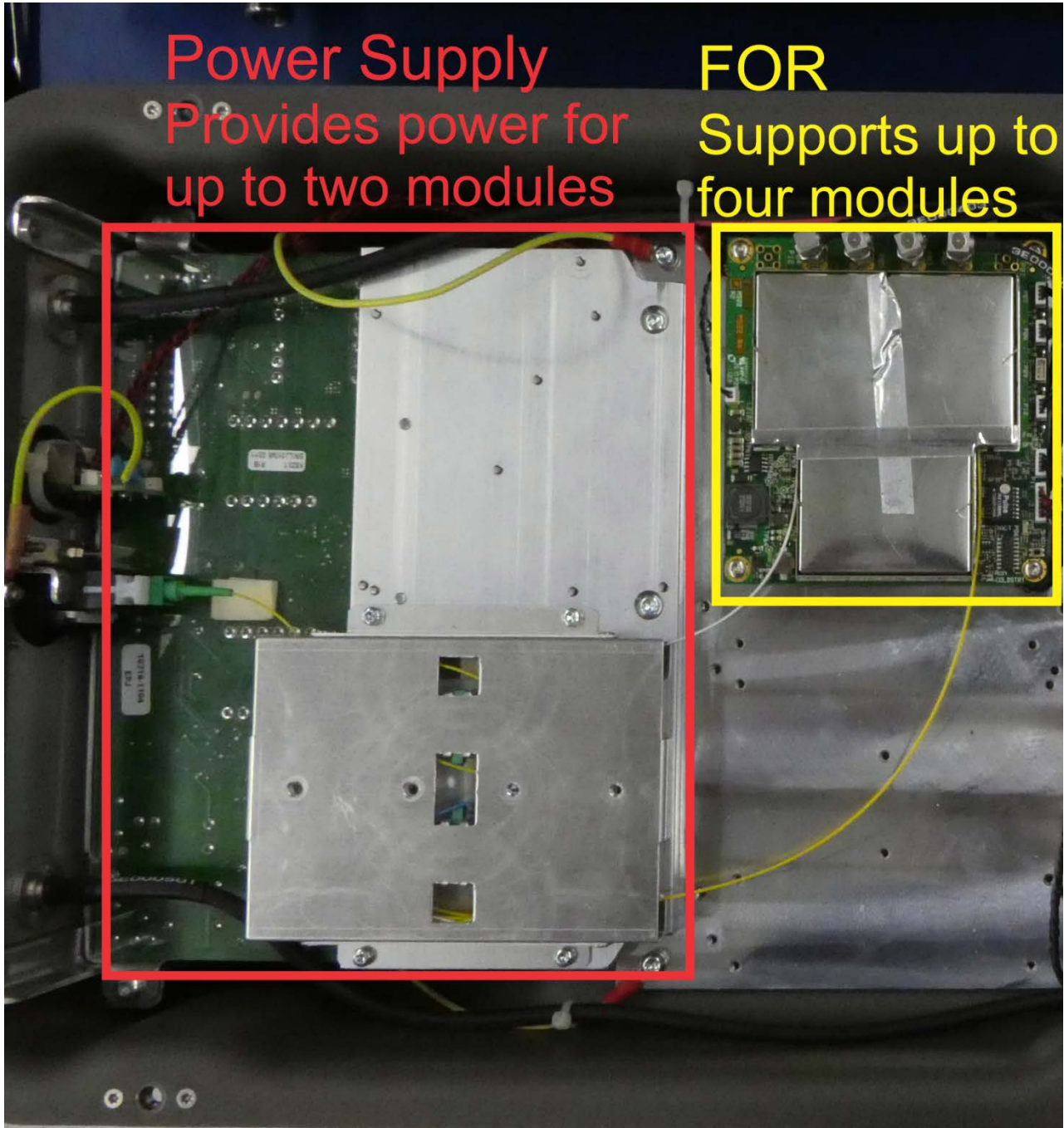


## Power Supply

- Provides power for up to two modules

## FOR

- Supports up to four modules





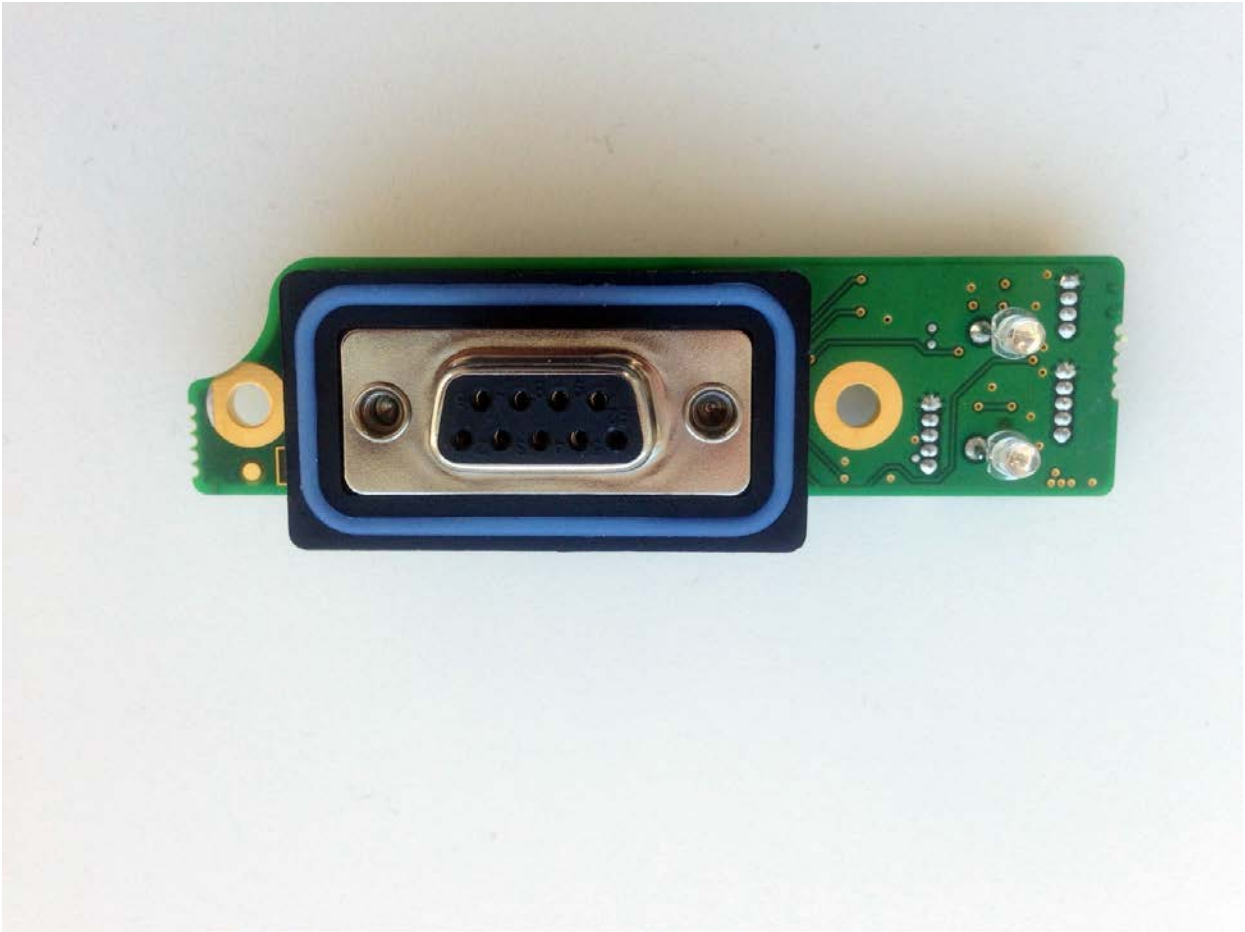
# Module

VGA

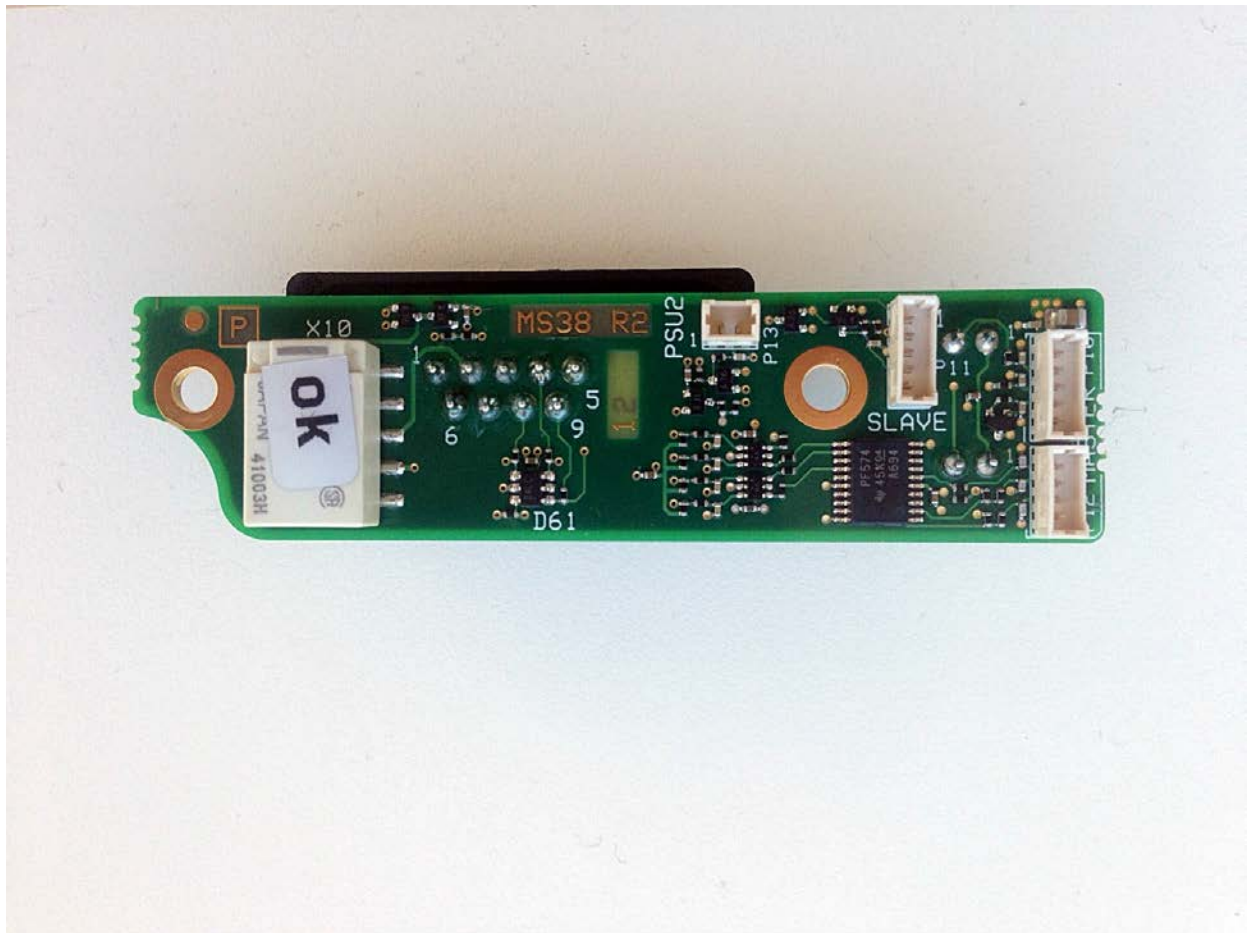
Duplex Filter

PA



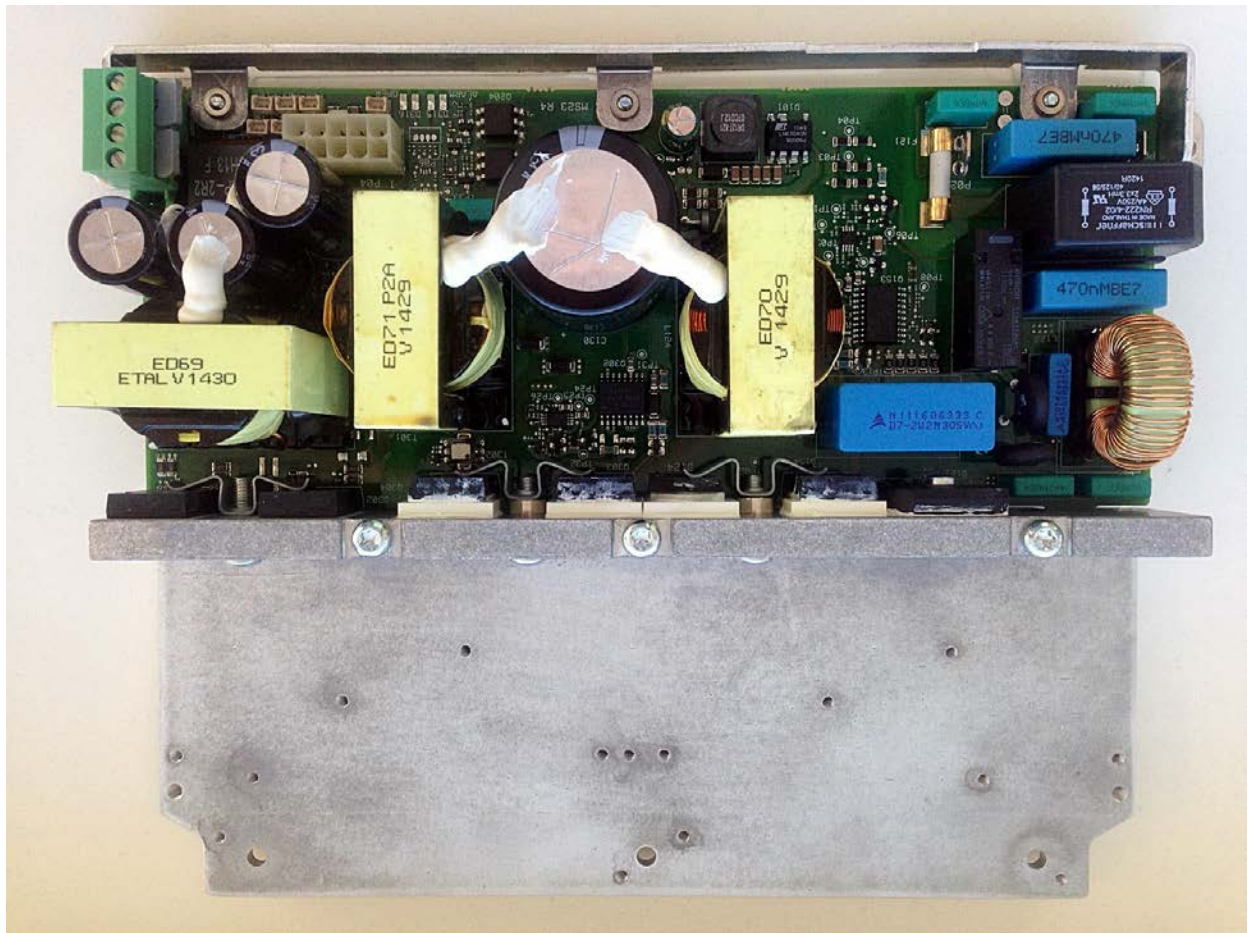


KS38.1 – Front – AIO alarm board

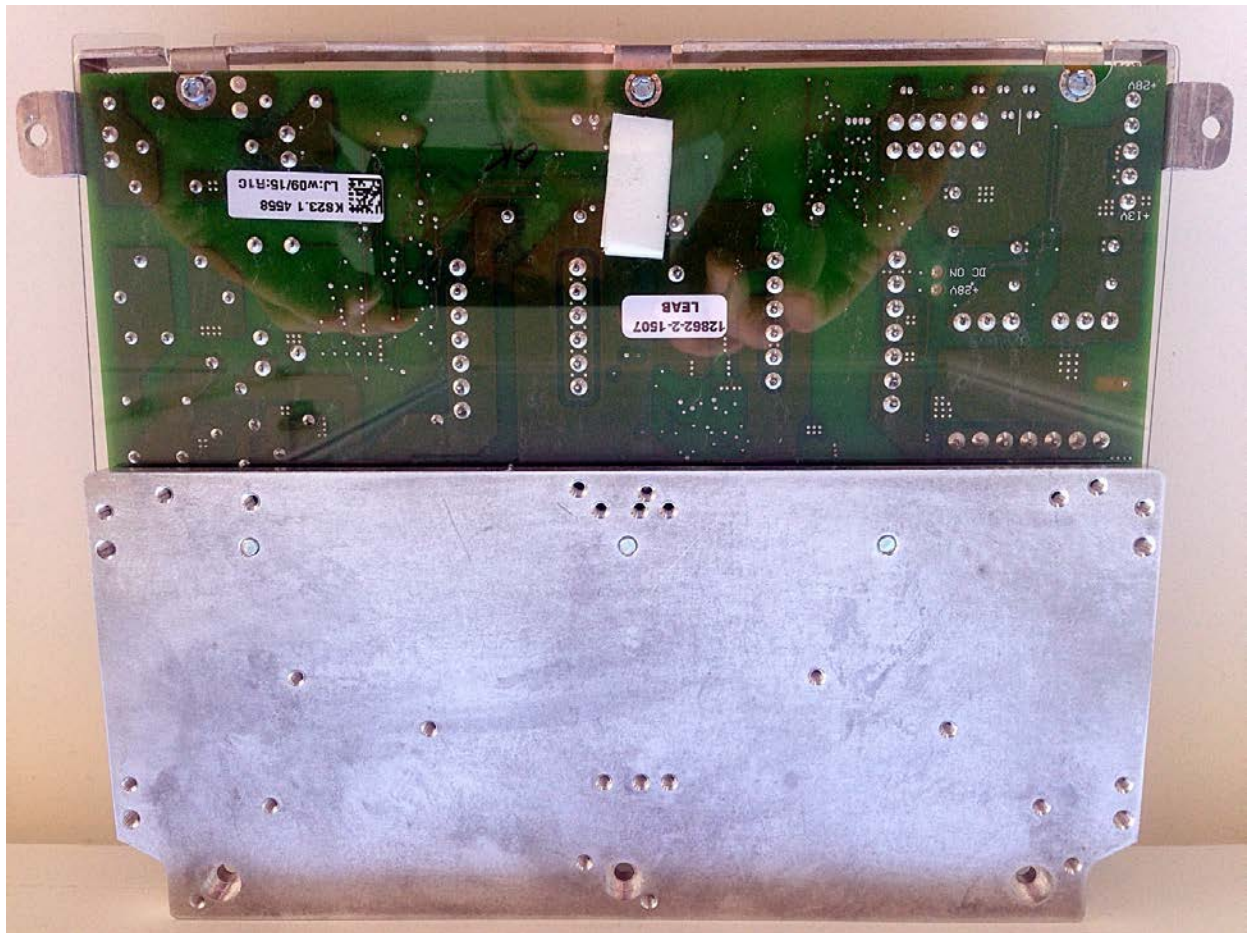


KS38.1 – Back – AIO Alarm board

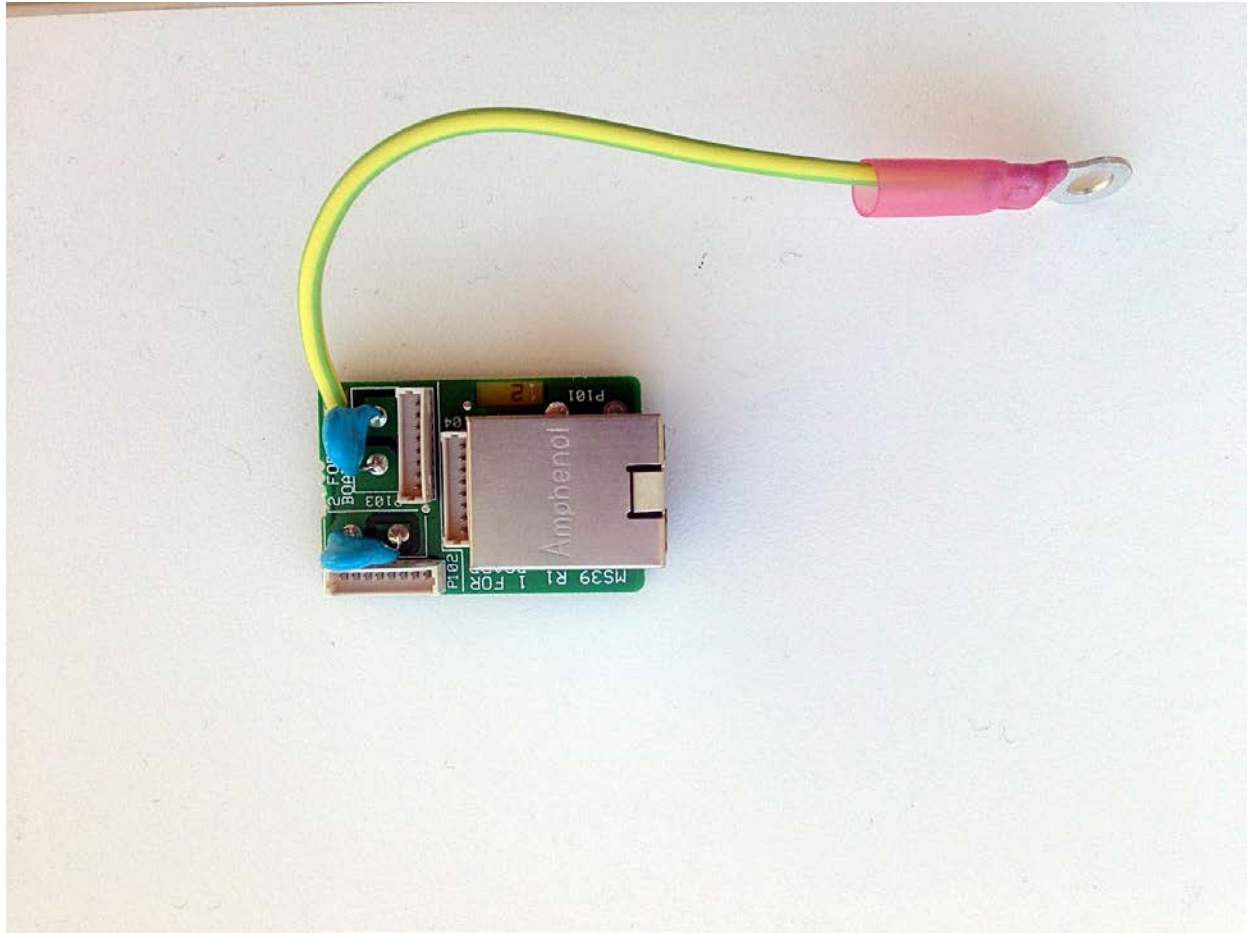




KS23.1 – Front Power supply

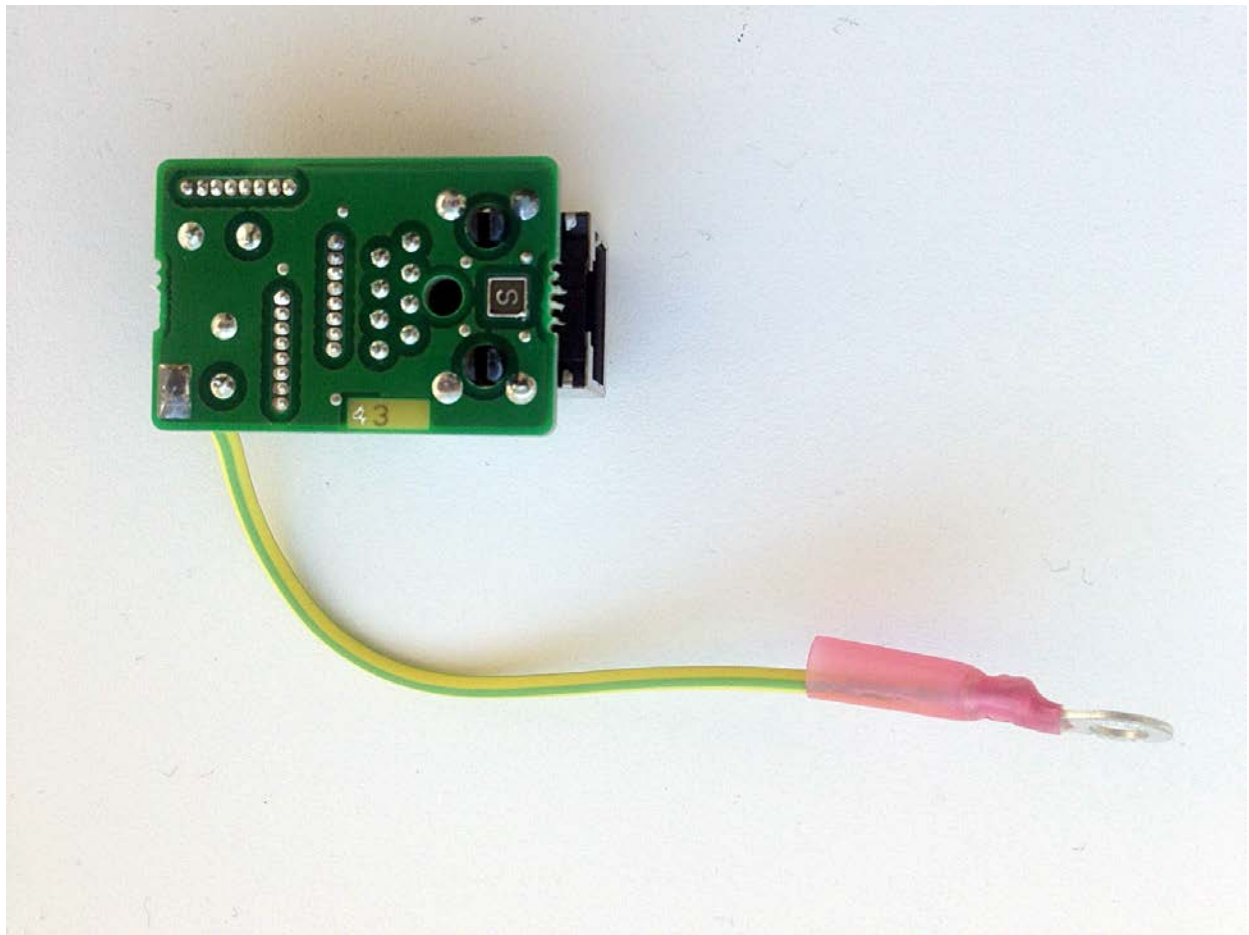


KS23.1 – Back Power supply

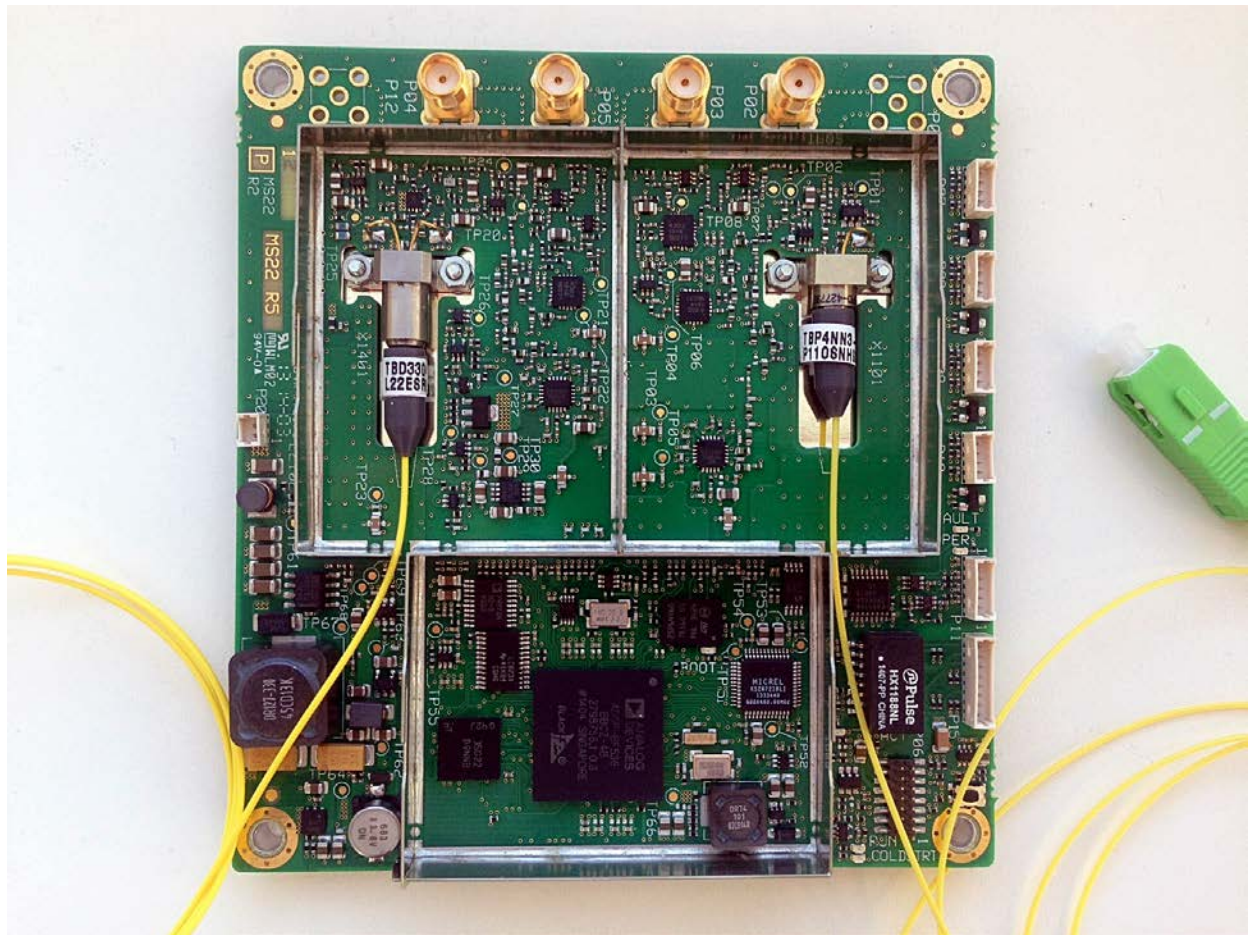


KS39.1 – Front Ethernet Board

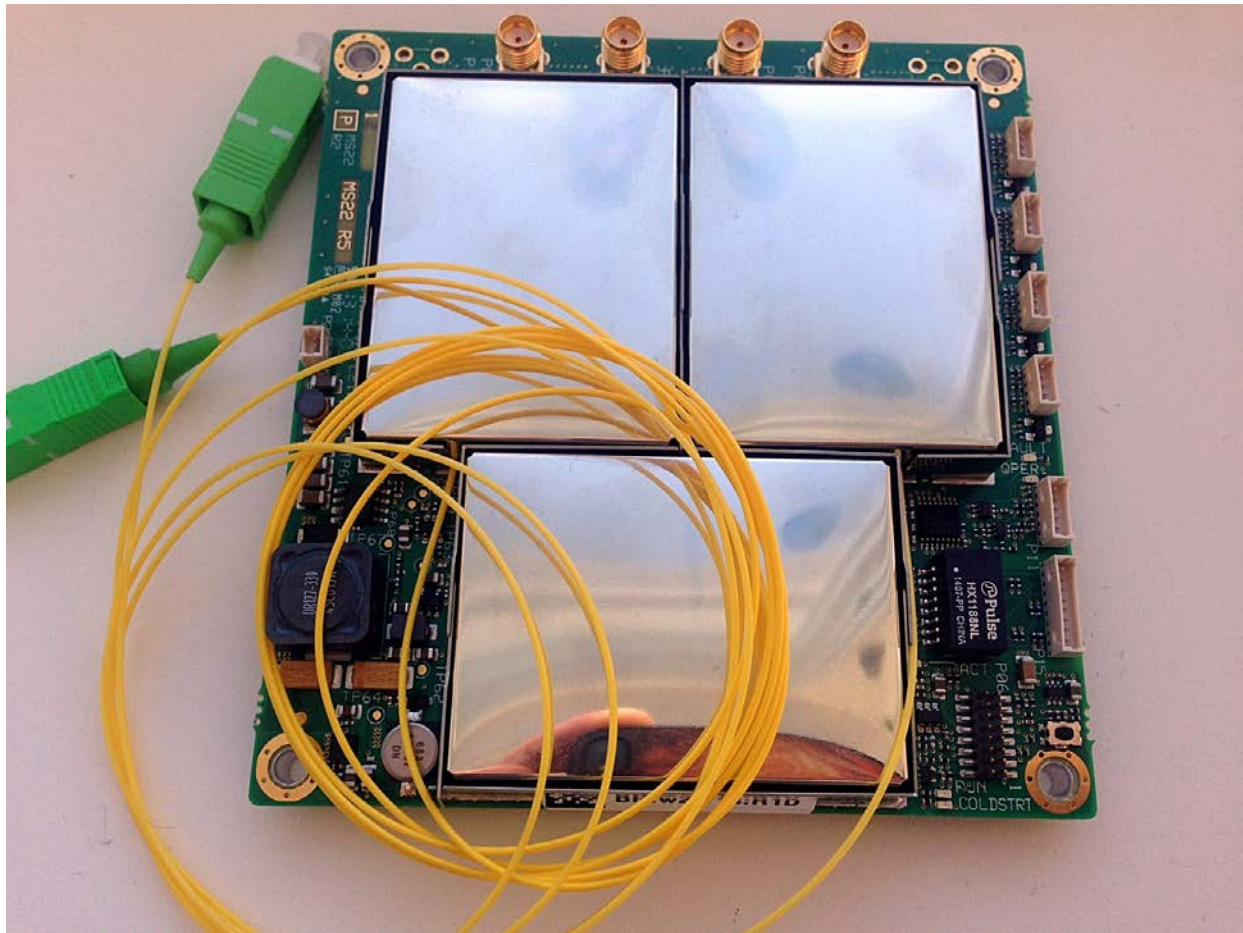




KS39.1 – Back Ethernet board

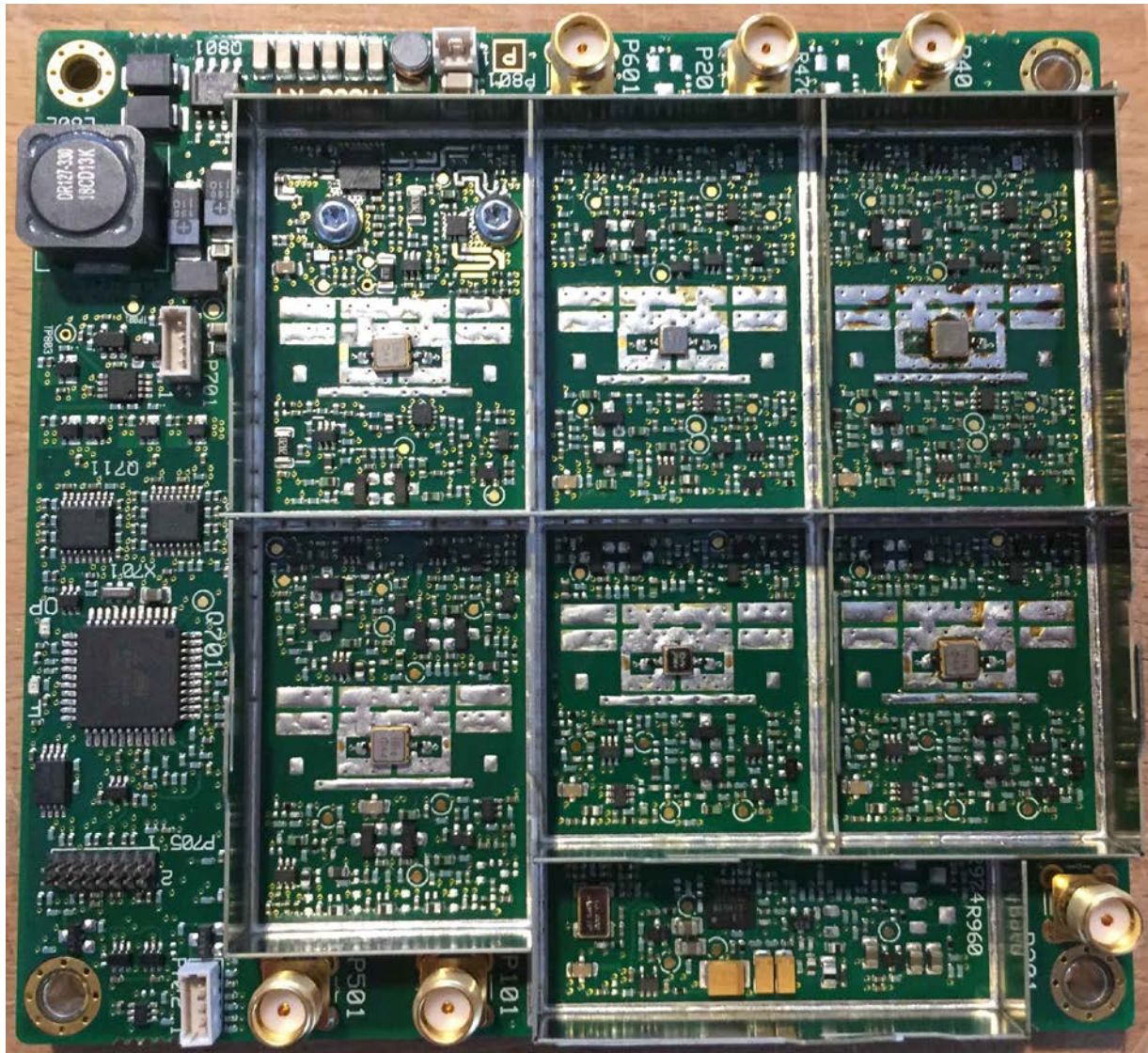


KS22.1 – Front FOR Fiber optic board

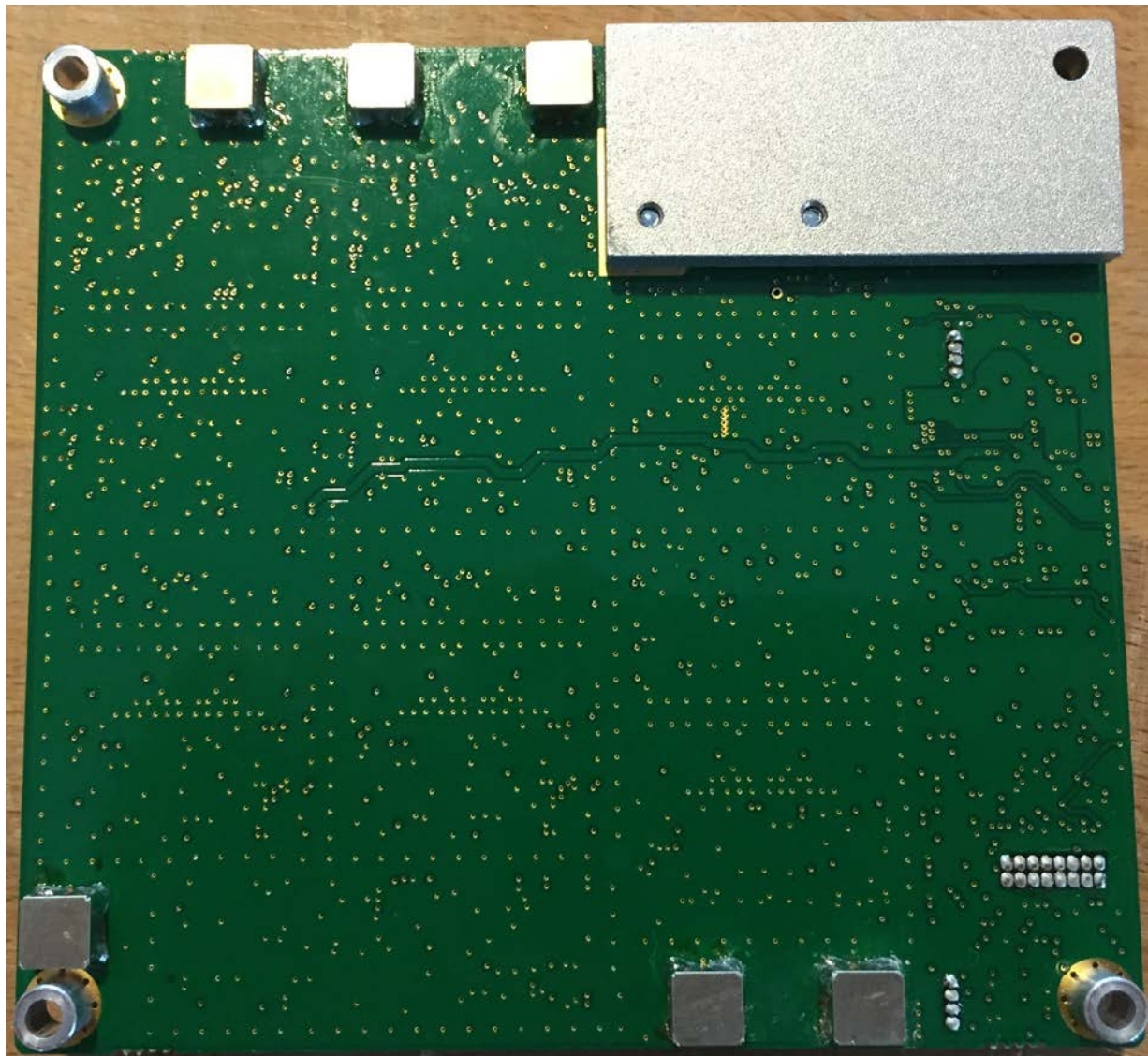


KS22.1 – Front with shield FOR Fiber optic board



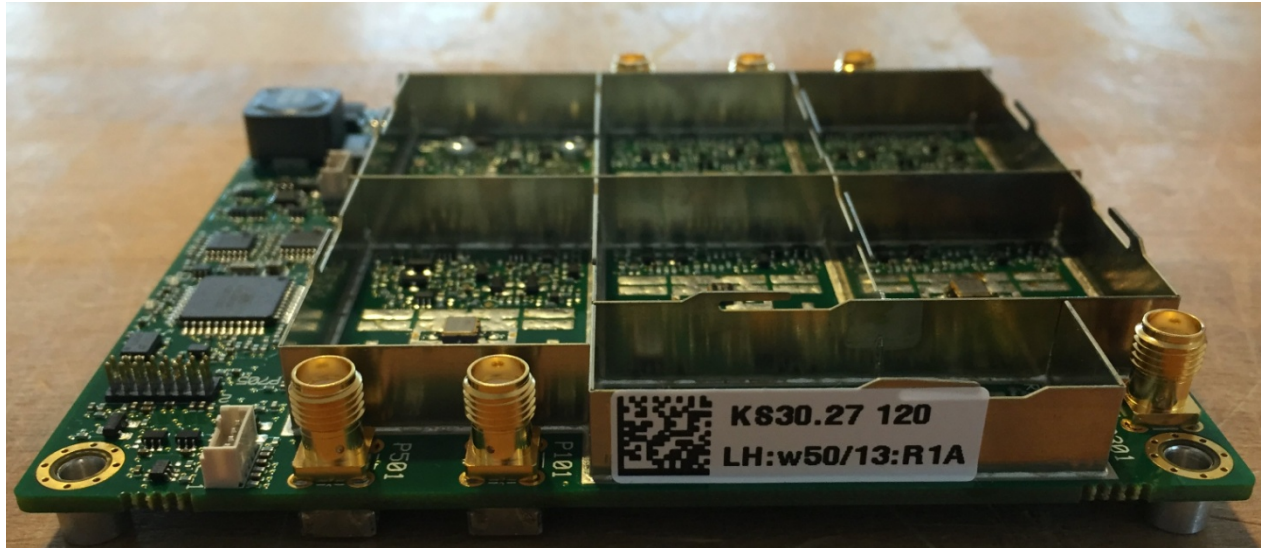


KS30.27 - Front VGA



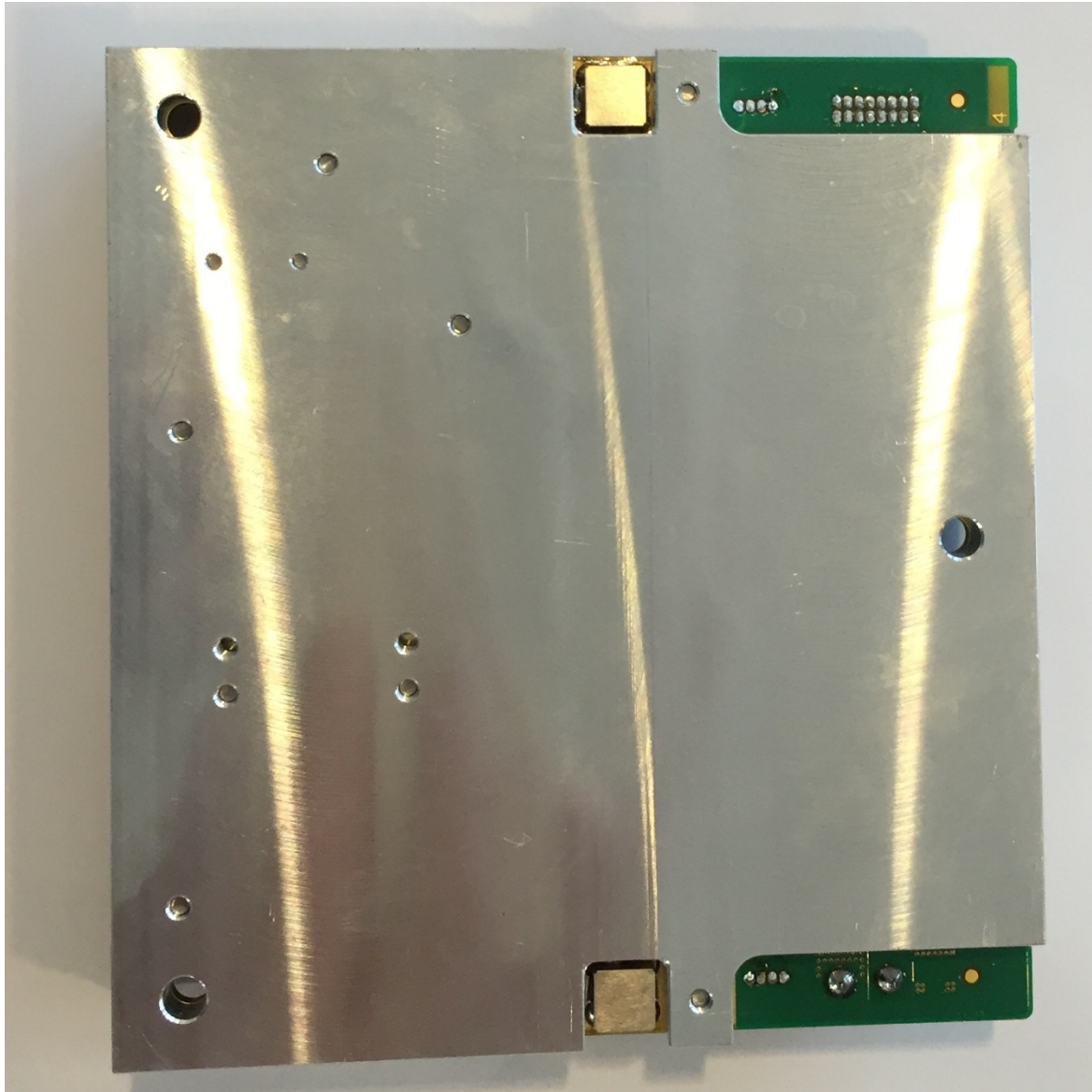
KS30.27 – Back VGA



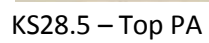


KS30.27 – Side – VGA

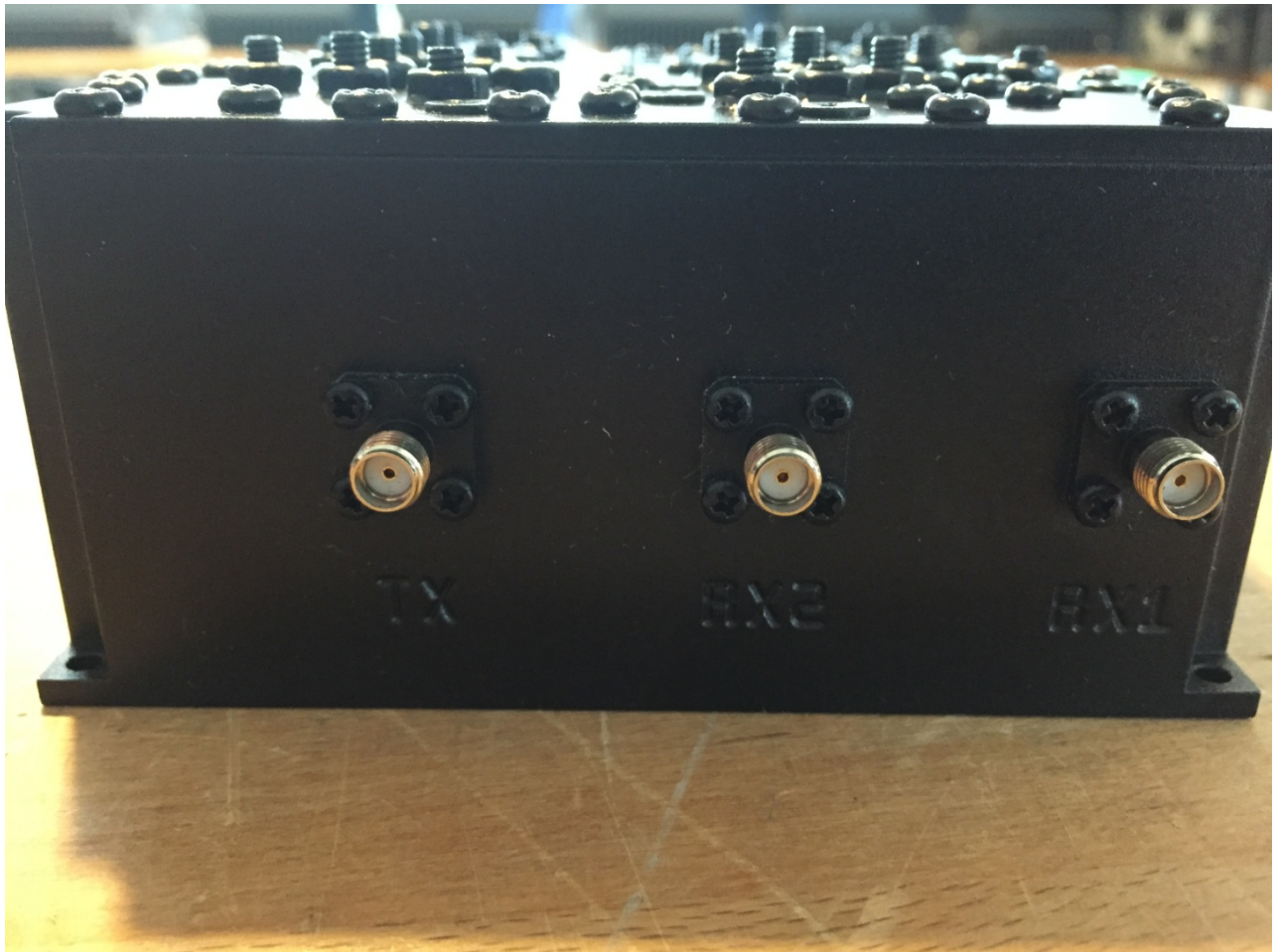




KS28.5 – Bottom PA

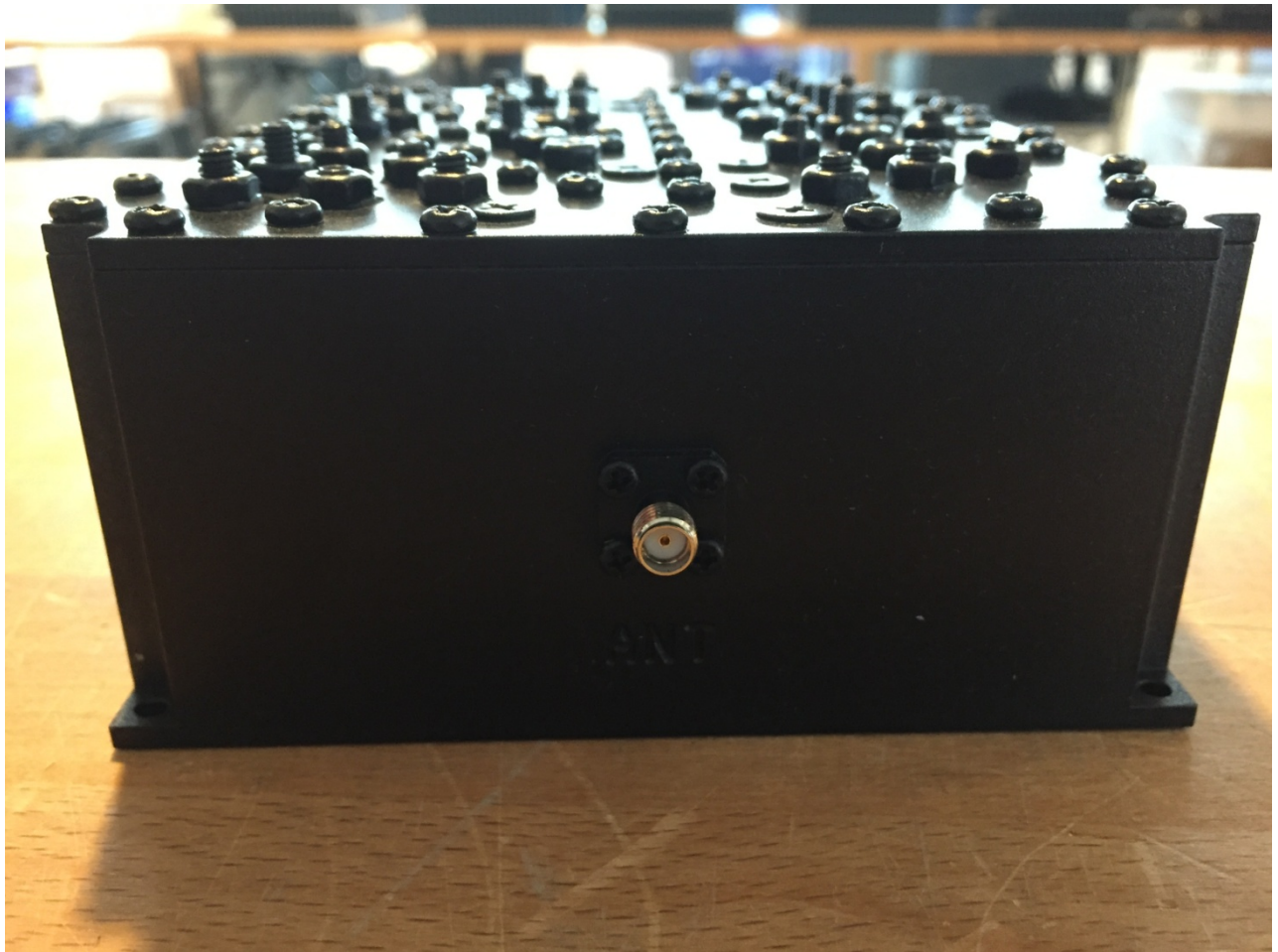




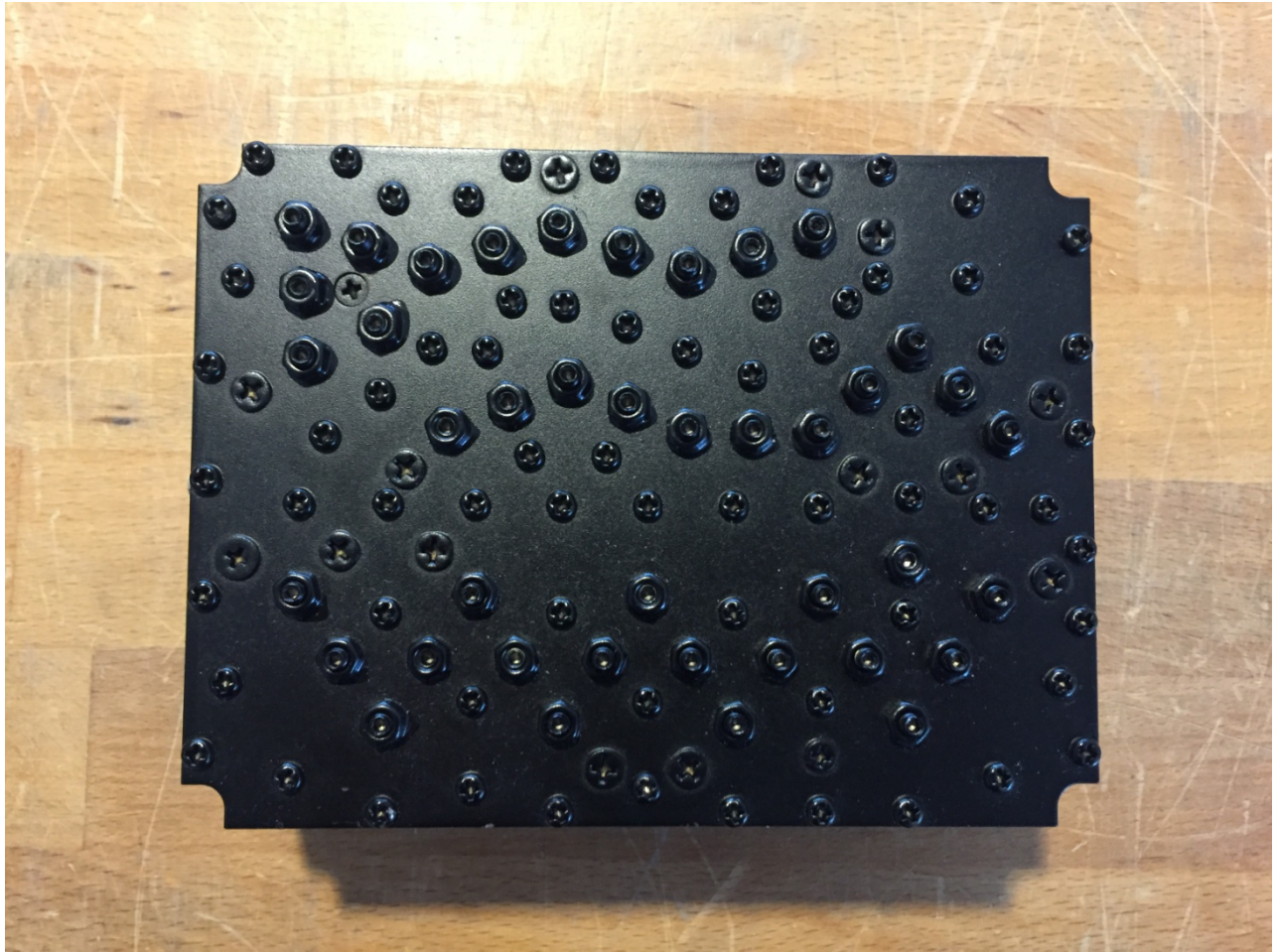


3F60601 – Filter Front side





3F60601 – Filter Back side



3F60601 – Filter Top