

Displaying Your Favorite Pictures is Easy and Fun

7 inch
Digital Picture Frame



User's Manual

Table of Contents

| | |
|--|----|
| Table of Contents | 2 |
| Important Safety Precautions | 3 |
| Cleaning the LCD Screen | 3 |
| Cleaning the Digital Picture Frame | 3 |
| What's in the Box | 4 |
| Identifying the Parts | 4 |
| Replacing Remote Control Battery | 5 |
| Product Specification | 5 |
| Features | 5 |
| Specification | 6 |
| How to Use Your Digital Picture Frame | 6 |
| Turning on and off | 6 |
| Connecting to PC | 6 |
| Function Select Screen | 7 |
| Photo | 7 |
| Slideshow Mode..... | 7 |
| Thumbnail Mode..... | 7 |
| Single View Mode..... | 7 |
| Video | 8 |
| Music | 9 |
| Calendar | 9 |
| Monthly Calendar..... | 9 |
| Calendar..... | 10 |
| Clock..... | 10 |
| File Manager | 11 |
| Setting | 11 |
| System Setup..... | 11 |
| Photo Setup..... | 11 |
| Calendar Setup..... | 11 |
| Video Setup..... | 11 |
| Music Setup..... | 11 |
| Frequently Asked Questions | 12 |

Important Safety Precautions

Always follow these basic safety precautions when using your Digital Picture Frame. This will reduce the risk of fire, electric shock, and injury.

Warning: To reduce the risk of fire or shock hazard, do not expose this product to rain or moisture.

Warning: To prevent the risk of electric shock, do not remove the cover. There are no user-serviceable parts inside. Refer all servicing to qualified personnel.

- ◆ The Digital Picture Frame is for indoor use only.
- ◆ Unplug the Digital Picture Frame before performing care and maintenance.
- ◆ Do not block the ventilation holes on the back of the Digital Picture Frame at any time.
- ◆ Keep your Digital Picture Frame out of direct sunlight and heat sources.
- ◆ Protect the power cord. Route power cords so that they are not likely to be walked on or pinched by items placed on or against them. Pay particular attention to the point where the cord is attached to the Digital Picture Frame.
- ◆ Only use the AC adapter included with the Digital Picture Frame. Using any other power adapter will void your warranty.
- ◆ Unplug the power cord from the outlet when the unit is not in use.

Cleaning the LCD Screen

Treat the screen gently.

To clean fingerprints or dust from the LCD screen, it is recommended to use a soft, non-abrasive cloth such as a camera lens cloth to clean the LCD screen.

If you use a commercial LCD cleaning kit, do not apply the cleaning liquid directly to the LCD screen. Clean the LCD screen with cleaning cloth moistened with the liquid.

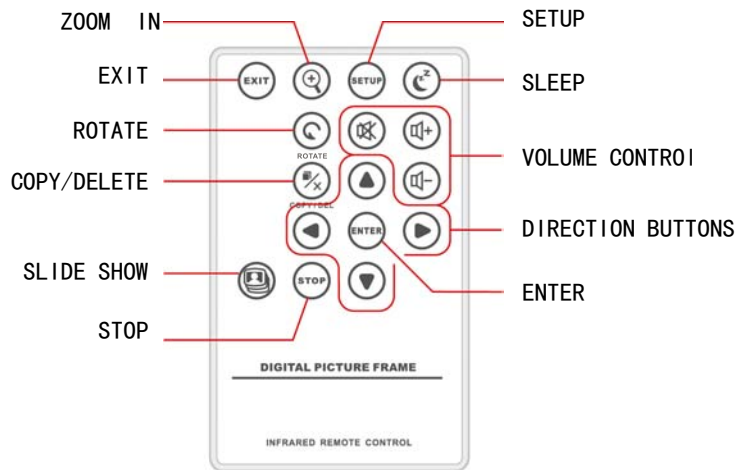
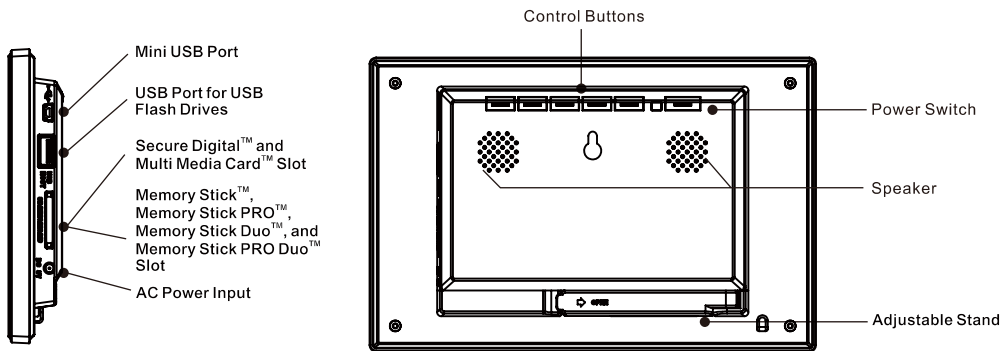
Cleaning the Digital Picture Frame

Clean the outer surface of the Digital Picture Frame (excluding the screen) with a soft cloth dampened with water.

What's in the Box

Digital Picture Frame
 Power Adapter
 Remote Control
 USB cable
 Stand
 User's Manual

Identifying the Parts



Replacing Remote Control Battery

If the remote control stops working or works improperly, replace the battery (CR2025 lithium battery) with a new one.

1. Pull out the battery holder.
2. Remove the old battery from the holder and then put a new battery with “+” facing up.
3. Insert the battery holder back to the remote control.

Warning

Battery may explode if mistreated. Do not recharge, disassemble or dispose of in fire

Notes

- ◆ When the lithium battery becomes weak, the operating distance of the Remote Control may shorten, or the Remote Control may not function properly. In this case, replace the battery with a CR2025 lithium battery. Use of another battery may present a risk of fire or explosion.
- ◆ Dispose the used batteries as specified by the local authorities.
- ◆ Do not leave the Remote Control in a very hot and humid place.
- ◆ Incorrect use of the battery may cause leaking and corrosion.
 - When the Remote control will not be used for a long period of time, remove the battery from the remote control to prevent leaking and corrosion.
 - Incorrectly inserting, shorting, dismantling, or heating the battery, or throwing it into a fire may cause the battery to rupture and leak.

Product Specification

Features

- ◆ Support JPEG image formats
- ◆ Zoom in, background music, and auto-slideshow with effects
- ◆ Displays clock, monthly calendar
- ◆ Auto-Crop
- ◆ Auto-Resize
- ◆ File Management
- ◆ Supports USB update

Specification

| | |
|---------------------|---|
| Product | 7" Digital Photo Frame |
| Resolution | 800x480pixel |
| Memory Card Formats | Secure Digital™, Multi-Media Card™, Memory Stick™, Memory Stick Pro™, Memory Stick Duo™, Memory Stick Pro Duo™ and USB flash drives |
| Image Formats | JPEG |
| Audio Formats | MP3 |
| Video Formats | Motion JPEG,XVID,H.264 |
| USB Ports | USB 2.0 (Host) x 1, mini-USB x 1 |
| Power Input | AC 100V~240V, 50~60Hz |
| Power Output | DC 5V / 1.5A |
| Internal Speakers | 0.5W x 2 |
| Certification | CE / FCC / RoHS |

How to Use Your Digital Picture Frame

Turning on and off

- ◆ To turn the Digital Picture Frame on, just simply plug the AC adapter to a wall outlet and the Digital Picture Frame then switch the POWER switch to ON position or press the POWER button, and the system will shows the Function interface. *
- ◆ To turn off the Digital Picture Frame, just switch the POWER switch to OFF position or press and hold the POWER button until the screen is blackened. *

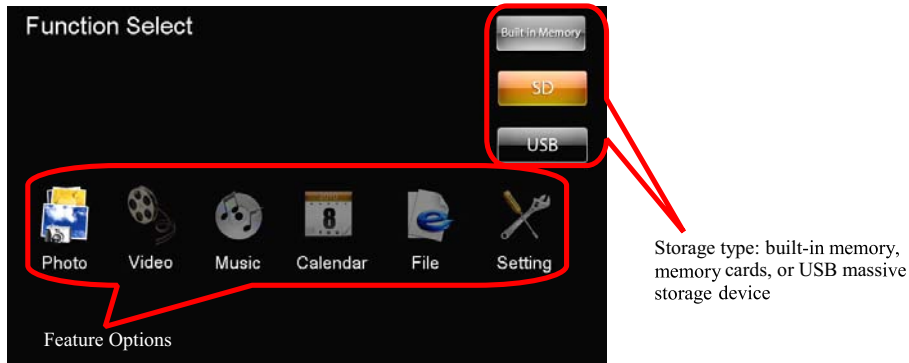
* The power switch or the power button may vary from different models.

Connecting to PC

At any time connecting the Digital Picture Frame to the PC, it will enter USB mode. The screen will show the message "connecting to PC". In USB mode, the Digital Picture Frame functions as a USB flash drive. To exit USB mode, simply unplug the USB cable or press ESC key.

Function Select Screen

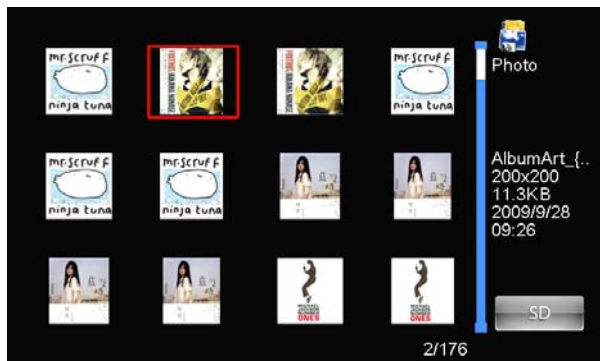
The Digital Picture Frame will enter the Mode Selection Screen when powered on. (The screen may vary from different models)



If there is no any operation for 8 seconds in the Mode Selection Screen, the Digital Picture Frame will start the slideshow automatically.

Photo

- ◆ **Slideshow Mode:** the images are displayed one by one. Pressing the SLIDESHOW button will start the slideshow. You can setup the display duration, effects, and image display ratio in the Setup menu by pressing SETUP button on the remote control. While playing slideshow, press ENTER to switch from “Slide with music” and “Slide photo only”.
- ◆ **Thumbnail Mode:** the screen is split to 2 portions; the left portion shows the thumbnails and the right portion displays the image information (image name, resolution, file size, image created date...etc)

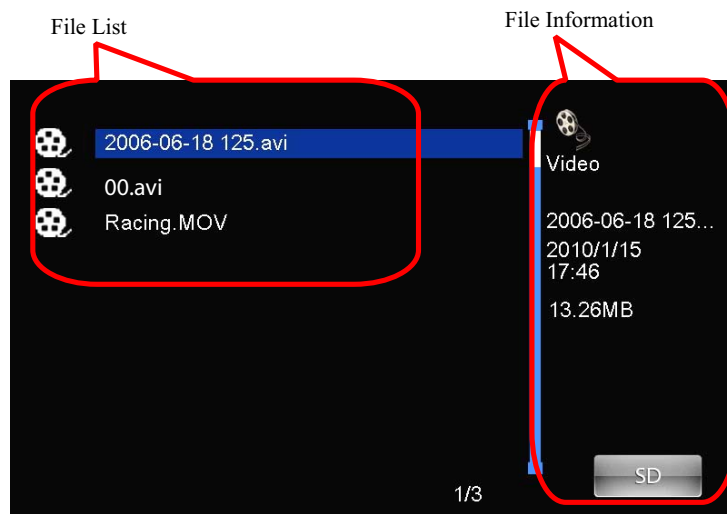


- ◆ **Single View Mode:** select the desired image in Thumbnail mode and press ENTER to display the image in full screen. The image will be displayed constantly. Press LEFT/RIGHT button on the remote control to view last/next image, or press ESC/Exit to return to Thumbnail Mode.

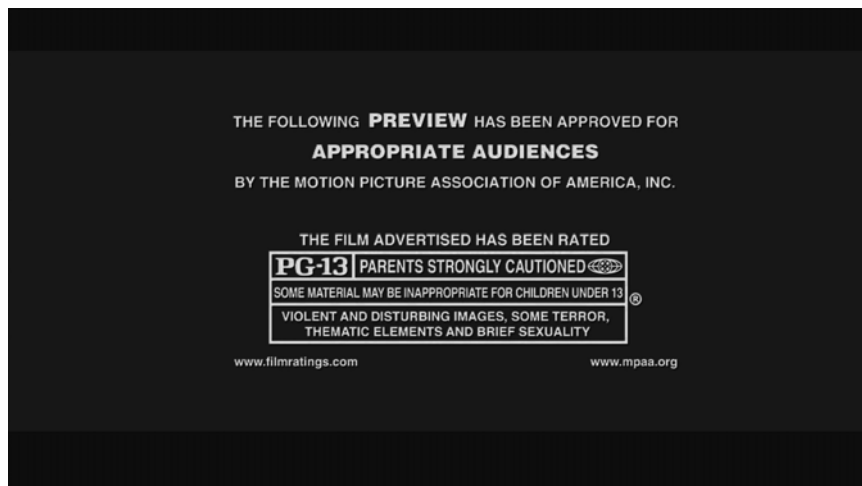
| Button | Function |
|-------------|---|
| ENTER | Slideshow start/slideshow music on(off) |
| STOP | Exit to thumbnail |
| EXIT | Exit to thumbnail |
| COPY/DELETE | Copy/Delete photos |

Video

- ◆ Select Video in Function Select Screen will show the video file list.



- ◆ Press ENTER to play the video file.



While playing the video, the playing time and the video length are shown at the bottom.

| Button | Function |
|--------|-------------------|
| EXIT | Exit to file list |
| LEFT | Backward |
| RIGHT | Fast forward |
| ENTER | Pause / Play |
| STOP | Stop the video |

Music

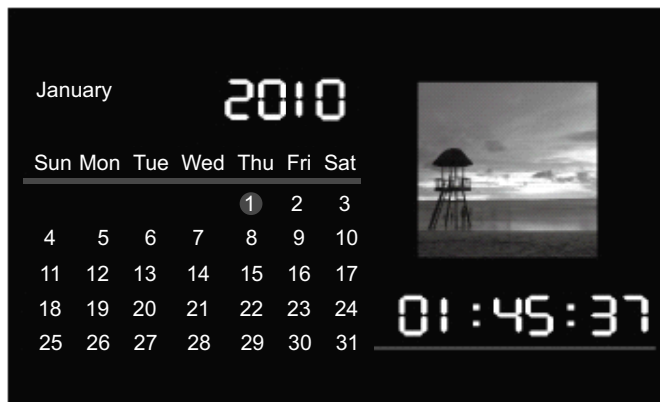
- ◆ Select Music in Function Select Screen and the screen will show the music file list.
- ◆ Use UP and DOWN buttons to select the file.
- ◆ Press ENTER to play the music.

Calendar

There are 3 display modes: Monthly Calendar, Calendar and Clock.

A. Monthly Calendar

The slideshow runs at right side



| Button | Function |
|--------|--------------------------------|
| EXIT | Exit to Function Select Screen |
| LEFT | Last image |
| RIGHT | Next image |
| UP | Last month |
| DOWN | Next month |

B. Calendar

The slideshow runs at right side



| Button | Function |
|--------|--------------------------------|
| EXIT | Exit to Function Select Screen |
| LEFT | Last image |
| RIGHT | Next image |
| UP | Last month |
| DOWN | Next month |

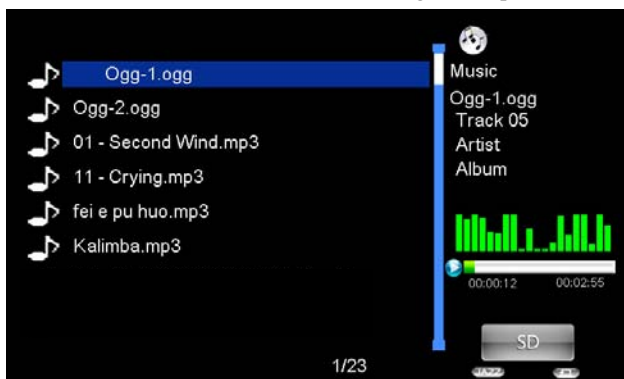
C. Clock



| Button | Function |
|--------|--------------------------------|
| EXIT | Exit to Function Select Screen |
| UP | Last month |
| DOWN | Next month |

File Manager

In Function Select Screen, select File Manager then press ENTER, the file list shows.



| Button | Function |
|-------------|---|
| EXIT | Back to upper folder / Exit to Function Select Screen |
| UP | Select the upward file |
| DOWN | Select the downward file |
| COPY/DELETE | Copy/Delete Files |
| ENTER | Confirm |

Setting

- ◆ In Setting, you can setup the system, photo, calendar, video and music.
- ◆ In the sub-setup menus, you can use below keys to change the settings.

| Button | Function |
|------------|---|
| EXIT | Back to upper folder / Exit to Function Select Screen |
| UP | Select the upward setting |
| RIGHT | Select the downward setting |
| LEFT/RIGHT | Change setting value |

- System Setup**
Here you can adjust Backlight, Brightness, Gamma, Hue, Language, Auto-Power On/Off, Auto-Power Frequency, and Reset.
- Photo Setup**
Here you can change the photo Display Mode, Display Ratio, Slideshow Duration, Slideshow Effect, Slideshow Repeat, Clock, Resize, Cut Out When Copy, and Show Tip When Copy.
- Calendar Setup**
Here you can change the calendar Display Mode, adjust Date, Time, and Clock Mode, and set Alarm.
- Video Setup**
Display Mode and Play Mode can be modified here.
- Music Setup**
Music Effect and Play Mode can be modified here.

Frequently Asked Questions

Q: How do I set up my Digital Picture Frame?

A: It is very simple to get your Digital Picture Frame out of the box and running in just a few minutes. Just plug the power adapter into the Digital Picture Frame and into a standard wall socket. Insert a memory card into the appropriate card slot on the side of the Digital Picture Frame and turn it on. Your first slideshow will automatically start to play.

Q: What memory cards can the Digital Picture Frame read?

A: Compatible memory cards include Secure Digital™, Multi-Media Card™, Memory Stick™, Memory Stick Pro™, Memory Stick Duo™, and Memory Stick Pro Duo™.

Q: I set up the Digital Picture Frame; why does it not turn on?

A: The adapter may be not securely connected to the Digital Picture Frame or wall socket, or the Power Switch may not be on. Please check if the adapter is properly plugged to the Digital Picture Frame and the wall socket.

Q: I have a memory card in the Digital Picture Frame; why can't I view my photos?

A: First, check whether the memory card is one of listed above and the images are one of the formats listed in the *Specification* on page 6. Second, turn the Digital Picture Frame off and make sure that the memory is inserted all the way into the card slot and is facing the correct direction. Third, turn the Digital Picture Frame on; you should see the Function Select Screen. Press EXIT and the yellow Built in Memory icon on the right side enlarges. Press DOWN button and the SD icon enlarges and become yellow. Press ENTER to choose Photo, the slideshow starts(factory default).

Note: Some digital cameras save images in other formats. Please refer to your camera's manual if your photo format is not listed in the specification.

Q: Why is the picture display slower with some pictures and faster with others?

A: Higher resolution pictures will be loaded slowly. Try to use lower resolution pictures or down sampling your images. See your camera's operating manual for details on downsizing your photos.

Q: Does the Digital Picture Frame support all JPEG files?

A: No. The Digital Picture Frame supports the JPEG files taken by a digital camera. It may not read all images files downloaded from the Internet or from other graphic applications.

FCC warning statement

This equipment has been tested and found to comply with the limits for a Class B digital device, pursuant to part 15 of the FCC Rules. These limits are designed to provide reasonable protection against harmful interference in a residential installation. This equipment generates, uses and can radiate radio frequency energy and, if not installed and used in accordance with the instructions, may cause harmful interference to radio communications. However, there is no guarantee that interference will not occur in a particular installation. If this equipment does cause harmful interference to radio or television reception, which can be determined by turning the equipment off and on, the user is encouraged to try to correct the interference by one or more of the following measures:

- Reorient or relocate the receiving antenna.
- Increase the separation between the equipment and receiver.
- Connect the equipment into an outlet on a circuit different from that to which the receiver is connected.
- Consult the dealer or an experienced radio/TV technician for help

WARNING: Changes or modifications to this unit not expressly

approved by the party responsible for compliance could void the user's authority to operate the equipment.