

Feature table

Main Chip:	AMLOGIC 6226D
Internal:	16MB/8MB SDRAM+8Gb NAND FLASH
Video:	Innolux 8" digital
Audio:	2 speaker and headphone
Interfaces:	4-in-1 card-reader (SD/MMC/MS/XD)
	CF CARD
	USB DEVICE and USB HOST
	TOUCH PAD
	RTC
	JTAG

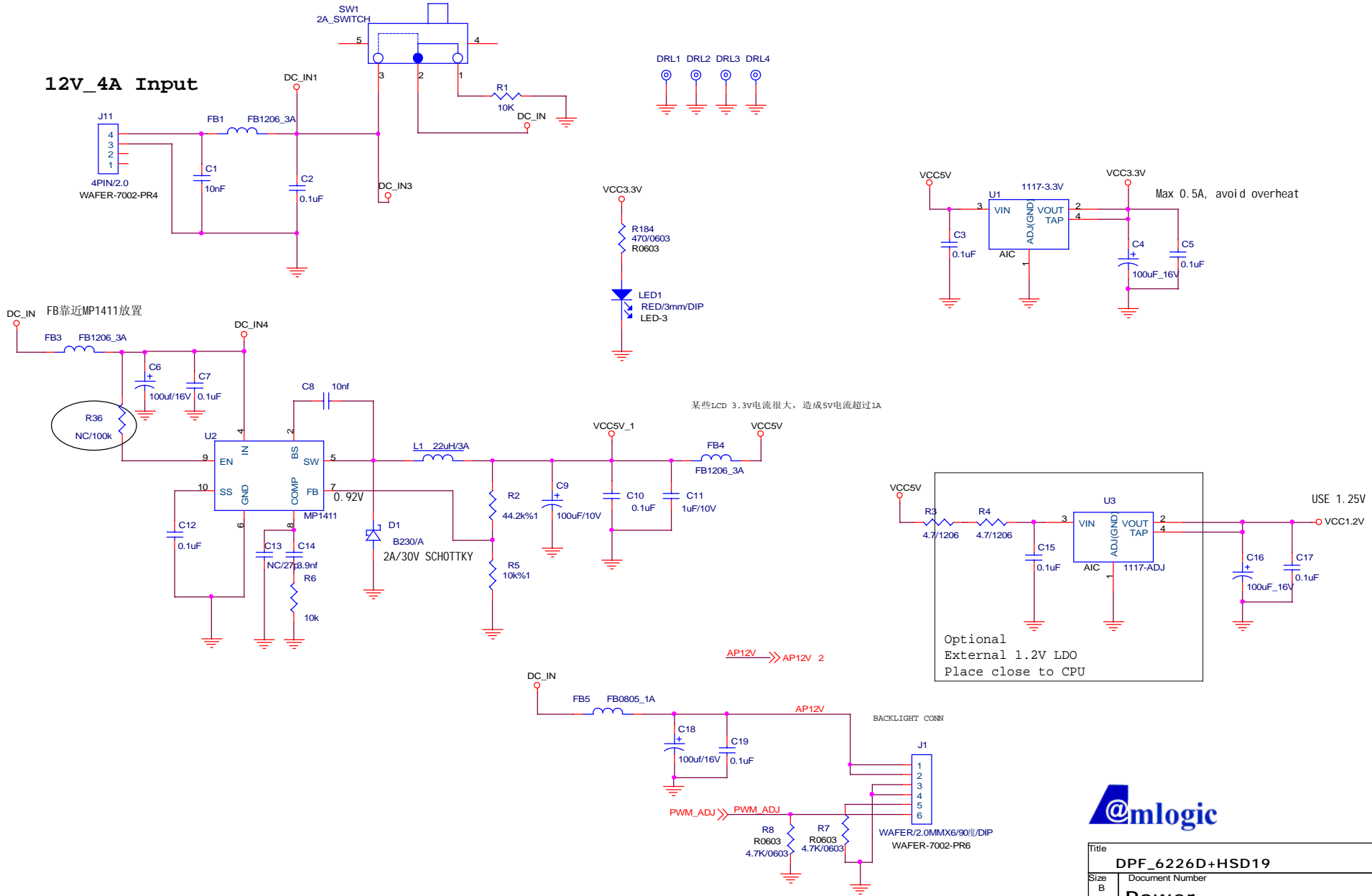
History

Version	Change List
V1.0	initial version

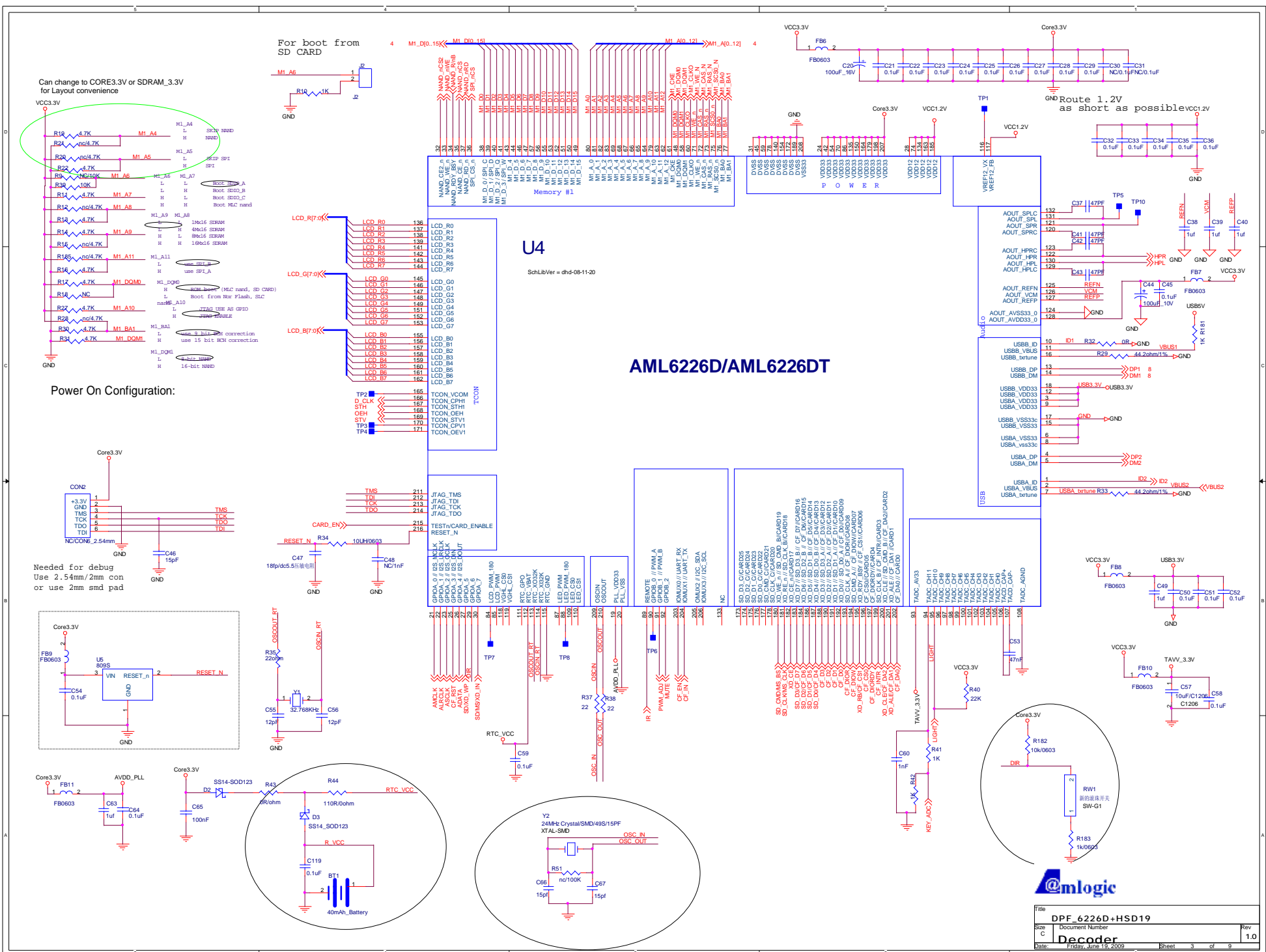


Title		DPF_6226D+HSD19	
Size	Document Number	Rev	
C	Block	1.0	
Date:	Thursday, June 18, 2009	Sheet	1 of 9

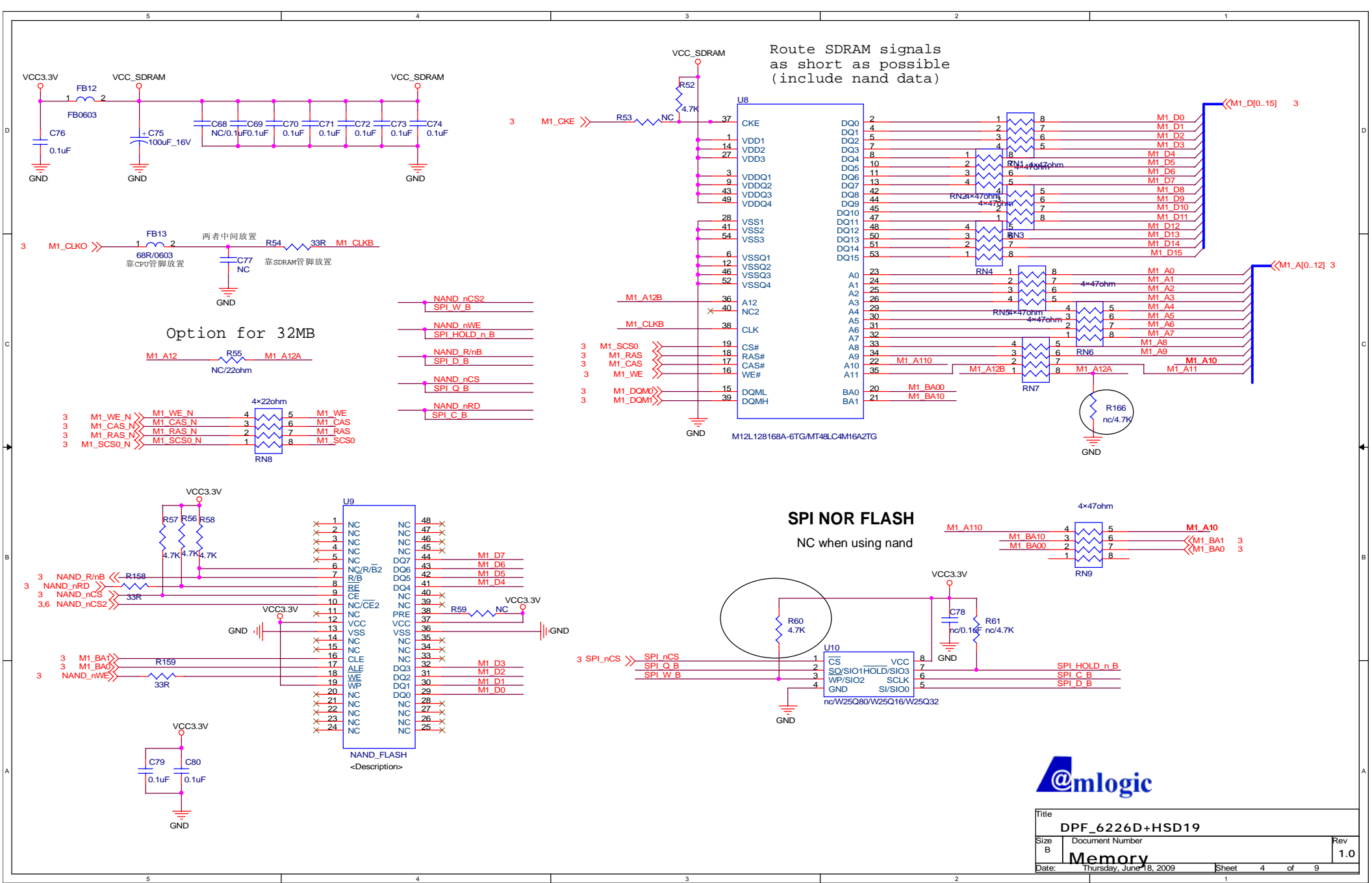
12V_4A Input

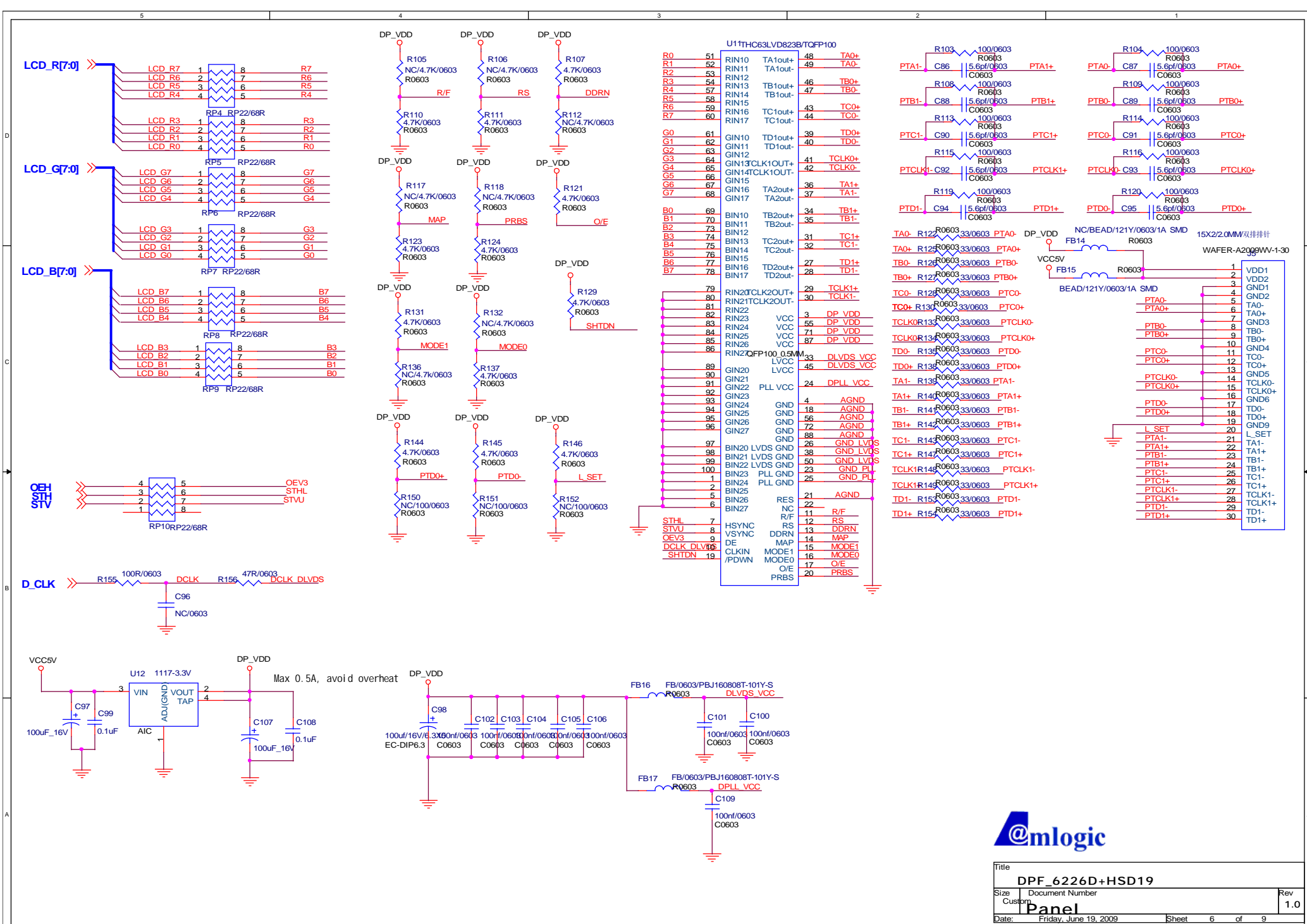


Title		DPF_6226D+HSD19	
Size	Document Number	Rev	
B	Power	1.0	
Date:	Friday, June 19, 2009	Sheet	2 of 9

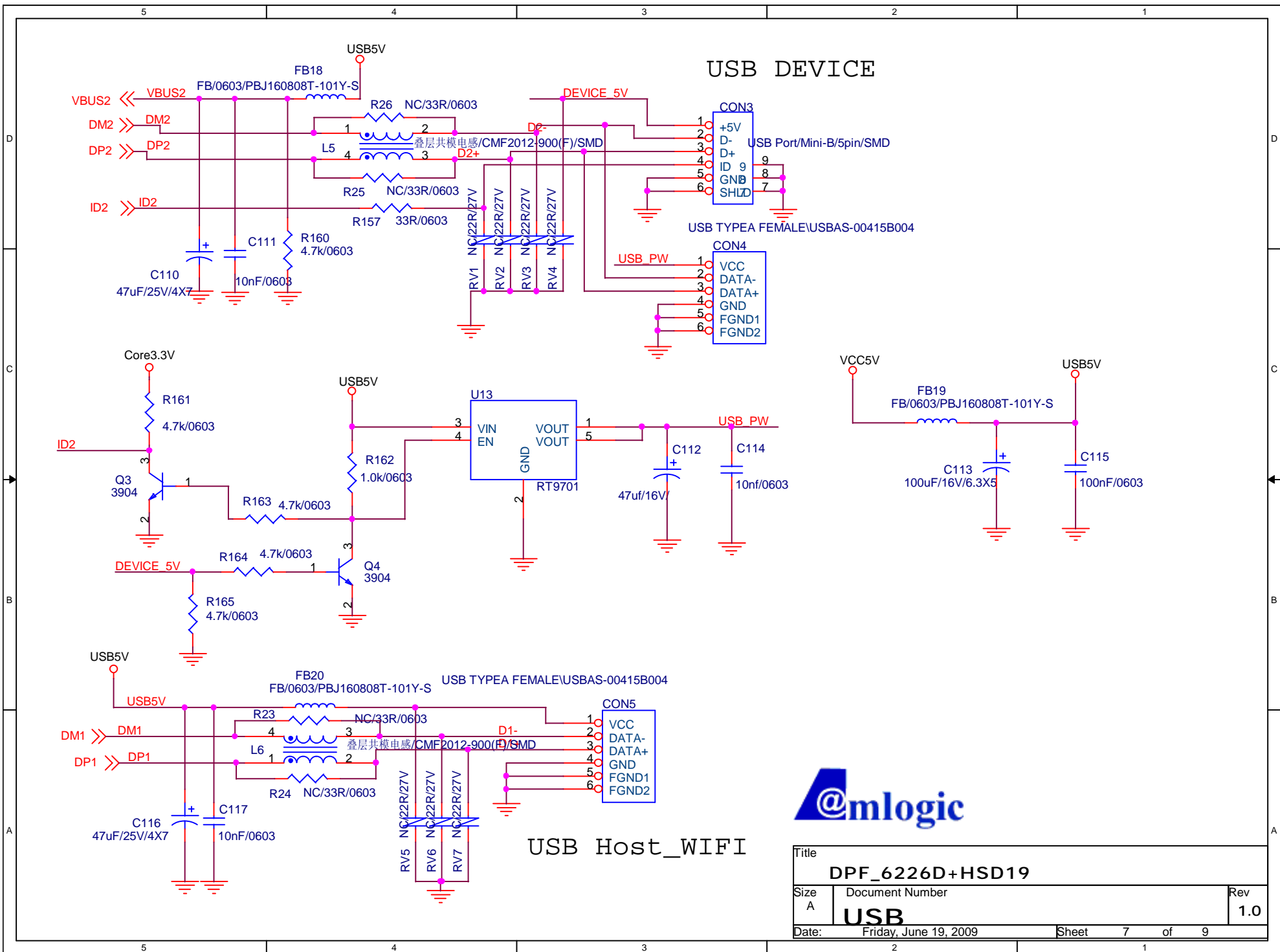


Title			DPF_6226D+HSD19
Size	Document Number		Rev
C	Decoder		1.0
Date	Friday, June 19, 2009	Sheet	3 of 9

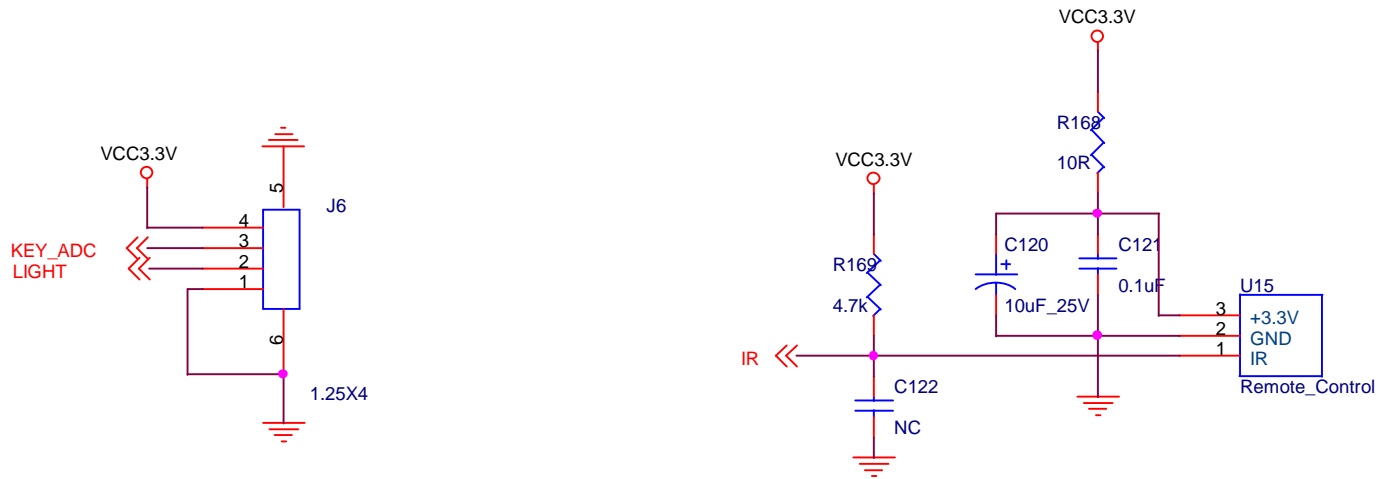




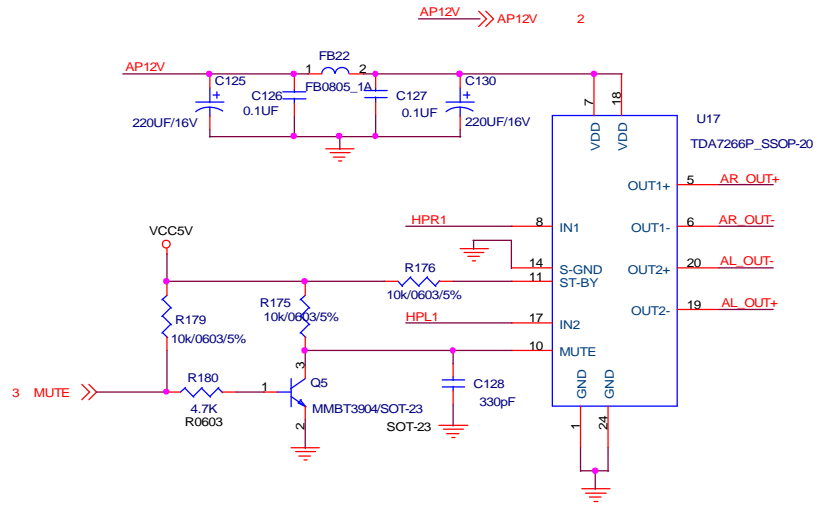
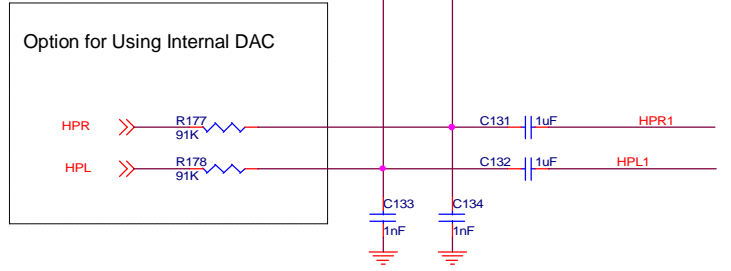
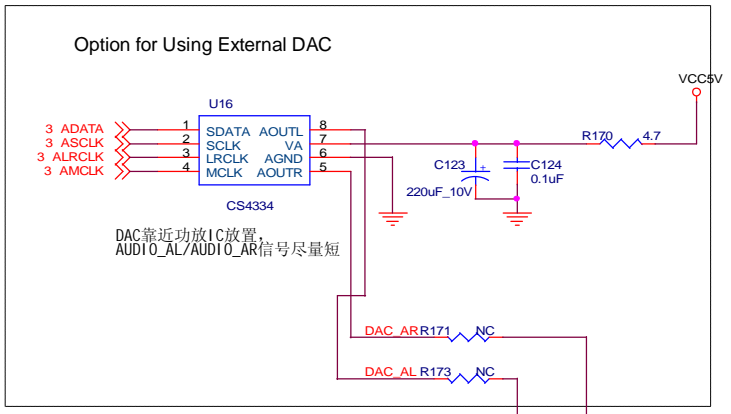
Title		
DPF_6226D+HSD19		
Size	Document Number	Rev
Custom	Panel	1.0
Date:	Friday, June 19, 2009	Sheet 6 of 9



Title		
DPF_6226D+HSD19		
Size	Document Number	Rev
A	USB	1.0
Date:	Friday, June 19, 2009	Sheet 7 of 9



Title		
DPF_6226D+HSD19		
Size	Document Number	Rev
A	KEY & IR & RTC	1.0
Date:	Thursday, June 18, 2009	Sheet 8 of 9



To Speaker



Title		DPF_6226D+HSD19	
Size	Document Number	Rev	
B		1.0	
Date:	Thursday, June 18, 2009	Sheet	9 of 9