

Note: The card will only fit in one direction; do not force it. The card should fit snugly when properly inserted.

3. Press the power button on the back of the Digital Picture Frame ON and holding 2 Seconds. until the LED light is on beside the Digital Picture Frame. It will automatically start a slide show of the photos on the card.
4. To display photos individually, press the Exit button to open the Thumbnails Screen. Use the Left and Right arrows to choose a photo. Press the Play button (>/II) on the top of the Digital Picture Frame, or the Enter button on the remote control.

Note: Pull the plastic tab sticking out of the remote control. It protects the battery, and the remote control will not work unless it is removed.

Locating the Digital Picture Frame's Features

Photo and description of buttons on picture frame.

Using the Control Buttons and Remote Control

You can use all of the Digital Picture Frame's features with either the buttons on top of the frame or using the remote control.

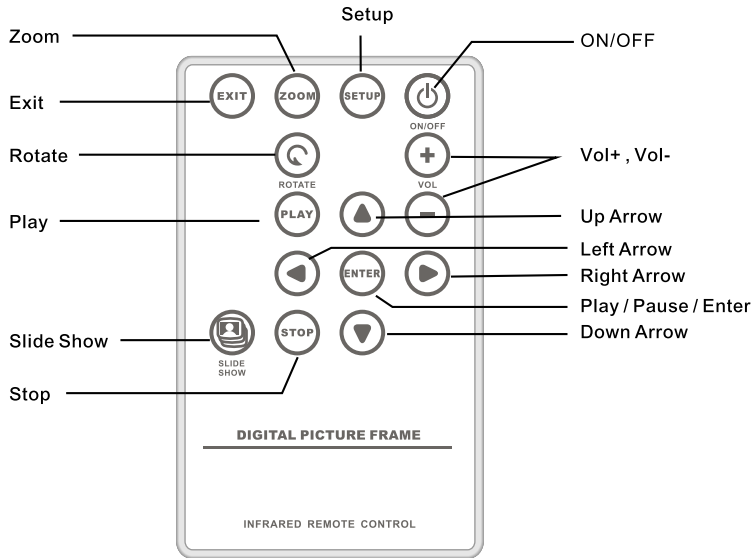
Use the Control Buttons

The control buttons are located on top of the Digital Picture Frame. Their basic functions are the same no matter when you press them.

Note: You can open the Setup Menu at any time by pressing the MENU button.
Except in the SlideShow Mode.

Use the Remote Control

The remote control included with your digital picture frame may look slightly different from the one shown here, but it includes all of the same buttons, and functions in the same way.



Install and Replace the Remote Control Battery

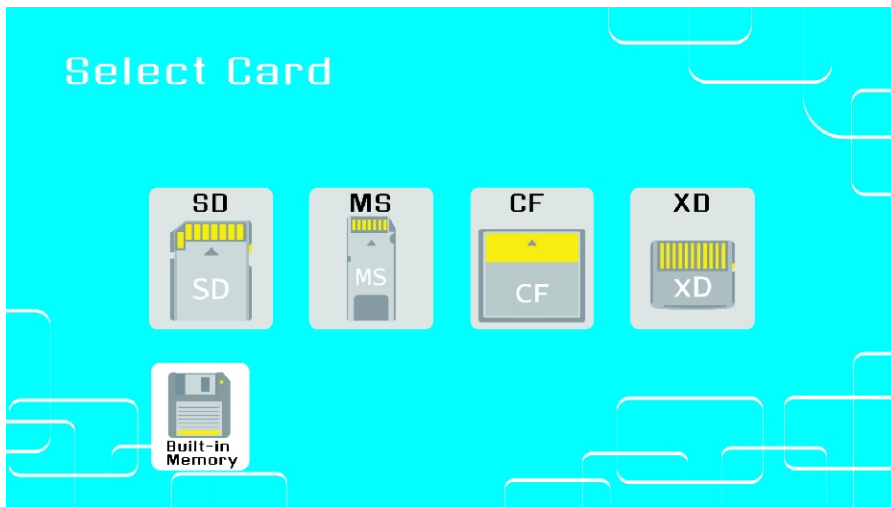
1. Hold the Remote Control with the control buttons facing downward.
2. While pressing down on the ridged area of the battery cover, pull the tray out.
3. Place a "CR2025" Lithium battery on the tray with the positive "+" end facing toward you.
4. Close the tray.

Setting Up the Slideshow

You can control all of the Digital PictureFrame functions with the buttons on the top of the frame or with the remote control. To display the setup screen, simply hold down the Exit button for 2 seconds, or press the Setup button on the remote control.

Card Selection Screen

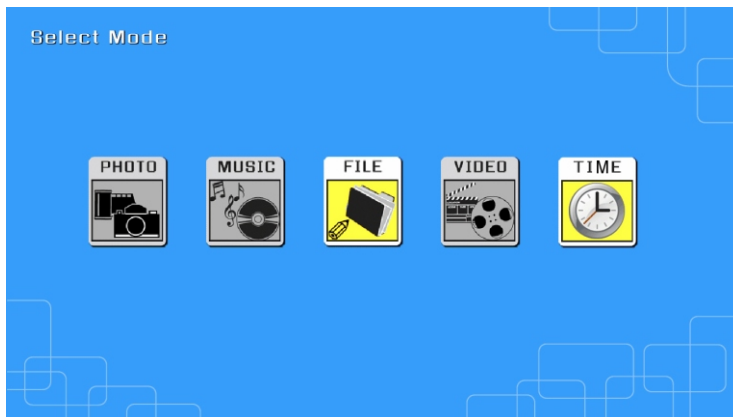
Use the Card Selection menu to choose between memory cards and the build-in memory.



1. To open the card select menu, either insert a new card, or press the Exit button repeatedly to back through the screens until you see it.
2. Press the Left and Right arrows to select the desired memory card, or built-in memory.
3. Press Enter to make the selection. The Mode Selection Screen opens.

Mode Selection Screen

The Mode Selection Screen shows after you choose the memory source. Use it to choose the type of files you wish to display.



Slide Show
Photo
Music
Video
Clock

Display slide show
Display JPEG still photo slide shows.
Play audio files.
Show motion JPEG AVI movies.
Clock & Calendar

1. Press the Left and Right arrows on the Remote Control or the Digital Picture Frame to select the mode.
2. Press Enter to make the selection. If you selected PHOTO, the Thumbnail Screen opens. It is described below.

If you selected any of the other file types, a screen listing all of the files with the chosen type. You can select one in the same manner as a photo.

3. To go back to the Mode Selection Screen, press Exit.

Thumbnail Screen

This screen shows thumbnail versions of all photos on the selected memory source; up to 6 photos are displayed at a time. Use this screen to select a single photo to display, or to start a Slide Show of all of the photos.

1. Press the Arrow Buttons on the Remote Control or the Digital Picture Frame until the desired photo is highlighted. The photo's filename is displayed at the top of the screen. The notations at the top of the screen also indicate if there is
2. Press the Slide Show button to start a slideshow.
3. To stop the Slide Show and return to the Thumbnail screen, press the Exit button.

Display a Single Photo on the Full Screen

You can choose a single photo to display, without a Slide show.

1. With the Thumbnails screen displayed, press Enter to display the selected photo on the full screen.
2. Press the Left Arrow to return to the previous photo.
3. Press the Right Arrow to display the next photo.
4. To stop the display and return to the Thumbnail screen, press the Exit button.

Controlling the Slide Show and Photo

The digital Photo Frame provides many options for customizing the display, and managing files. These options are available when viewing photos only.

Manually Change the Displayed Photo

During a Slide Show, each photo replaces the previous one at a selected rate (See Slide Show Speed).

You can also change the displayed photo at any time during a slide show.

- Press the Left Arrow to return to the previous photo.
- Press the Right Arrow to display the next photo.

Rotate the Photo

You can rotate a photo displayed full-screen using the Remote Control. Press the rotate button to rotate the photo 90 counterclockwise.

Enlarge the Photo

To magnify a photo displayed full-screen, press the Zoom button.

- The photo doubles in size each time you press the button until it is 4x normal size. Then it will return to normal size.
- While the photo is in enlarged, use the Arrow buttons to move the photo so you can see the portions that aren't currently visible.

Copy the Displayed Photo to the Built-In Memory

Use the Remote control to copy the displayed photo from the memory card to the built-in memory.

1. Press the Setup button. A setup menu opens.
2. Press the Up or Down arrow to select Copy Photo.
3. Press Enter. A confirmation message is displayed.
4. Press Exit to close the menu.

Delete the Displayed Photo

Use the Remote control to a photo from the built-in memory.

1. Press the Setup button. A setup menu opens.
2. Press the Up or Down arrow to select Delete Photo.
3. Press Enter. A confirmation message is displayed.

Caution: The photo will be deleted immediately; you will not be able to change your mind.

4. Press Exit to close the menu.

Adjust the LCD Color

Choose this option to adjust the Brightness, Contrast, Tint, and Color of the display.

1. Press the Setup button. A setup menu opens.
2. Press the Up or Down arrow to select Adjust LCD Color.
3. Press Enter. A second menu opens.
4. Use the Arrow buttons to select an option to adjust.
5. Use the Right and Left arrows to adjust the option. The display changes.
6. Use the Arrow buttons to select another option to adjust.
7. When the display looks the way you want it to, press Exit to close the menu.

Add Music to the Slide Show

To play background music with a slideshow, copy audio files onto the same memory card as your photos. The music will play as the slide show runs. See "Copying Files from a Computer" for details on copying files.

You can also choose a music file to play without a Slideshow. Just select it from the Music screen.

Note: Music files must be standard MP3 format and not from licensed music download services.

How to copy pictures from Flash Card into Built-in memory?

(1) In the Thumbnail Screen

- a. select pictures by press Up, Down, Left and Right button.
- b. confirm by press Vol+ button; cancel by Vol- button.
- c. press Setup button firstly, then select Copy Picture and then copy selected.

Other way: press Setup button firstly, then select Copy Picture, and then Copy All, in this way, all the pictures will be copied into built-in Memory.

(2) In the File Mode

- a. select files by press Up or Down button.
- b. confirm by press Vol+ button; cancel by Vol- button.
- c. press Setup button firstly, then select Copy.

2. Slide show selected

(1) In the Thumbnail

- a. select pictures by press Up, Down, Left or Right button
- b. confirm by press Vol+ button; cancel by Vol- button.
- c. Press Setup button firstly, then select Slide Show, and then Slide Show selected.

3. Delete pictures from Built-in Memory

(1) In the Thumbnail

- a. select pictures by press Up, Down, Left or Right button.
- b. confirm by press Vol+ button; cancel by Vol- button.
- c. press Setup button firstly, then select Delete, and then Delete Selected.

Other way: press Setup button firstly, then select Delete, and then Delete All, in this way, all the pictures will be deleted from Built-in Memory.

(2) In the File Mode

- a. select files by press Up or Down button.
- b. confirm by press Vol+ button; cancel by Vol- button.
- C. press Setup button firstly , then select Delete.

Listening to Music

If there are Music files on a memory card or in the built-in memory, you can play them on the Digital Picture Frame.

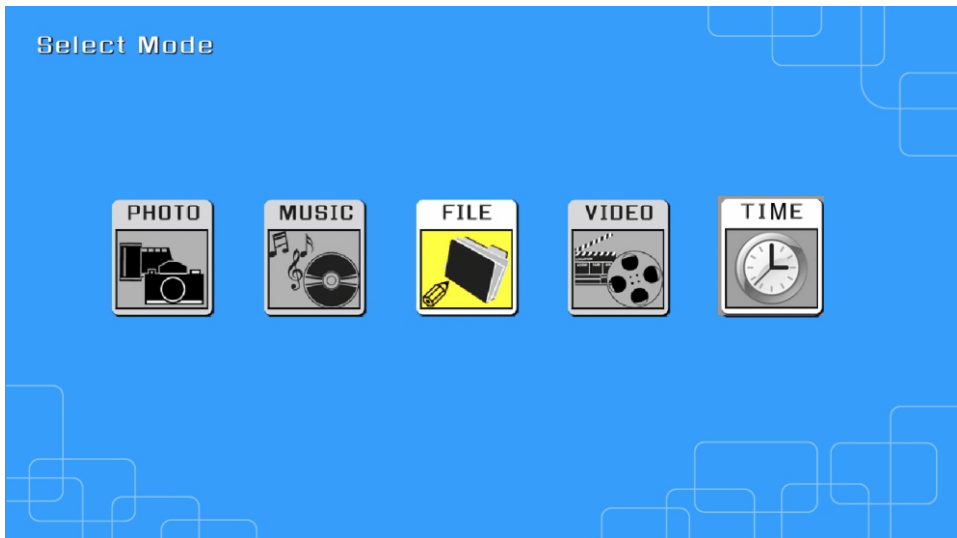
1. Use the Remote Control to open the Select Mode screen (described above) and select Music. A new screen opens listing all of the music files on the selected card.
2. Use the left and right arrows to choose a file.
3. Press the Enter button to play the file.
4. To stop the music and return to the Music screen, press the Exit button.

Control the Volume

Use the Remote Control to adjust the volume on the Digital Picture Frame or when playing Audio files. Press the **VOL+/VOL -** buttons to adjust the volume up or down.

Watching a Video

You can watch video files on your Digital Picture Frame as well. It supports the Motion JPEG (AVI) video format used by most digital cameras.



To watch a video, there need to be video files on the memory card.

1. Insert a memory card with video files on it. The Card Selection Screen opens. Choose the desired card.
2. Press Enter. The Mode Selection screen opens.
3. Use the Arrow keys to choose Video and press Enter. A screen listing all of the video files opens.
4. Use the Arrow buttons to choose the desired file and press Enter. The Digital Picture Frame plays the video.
5. Adjust the volume by using **VOL+/VOL** buttons on the Remote Control.
6. Press direction buttons **▲▼◀▶** to select a different video file.

Setting Clock and Calendar

The digital photo frame supports the functions of clock and calendar. Entering Clock mode and select Set up, you will see the options: Set Current Time.

Notice: please press Left/Right key to choose the hh-mm-MM-DD-YY, and press Up/Down key to modify the number of time , and press Enter to save the time.

Setting Viewing Options

You can control all of the viewing options in the Setup Menu using the buttons on the top of the frame or the remote control. You can display the on-screen Setup Menu any time the Digital Picture Frame is not displaying Photos or Videos, by pressing the Setup button.

1. To show the Setup menu during a photo or video, press the Exit button, then the Setup button.
2. With the Setup menu open, use the Up and Down arrows to choose a display option.
3. Press Enter to select the option. A second menu opens, listing the available settings. A white square shows the current setting.
4. Use the Up and Down arrows to choose the desired setting.
5. Press Enter to select the setting. The second menu closes.
6. You can make as many changes as you wish in the same manner. When you are finished, press the Exit button to close the Settings Menu and return to the Thumbnails screen.
7. The following table lists the display options in the Setup Menu, their options, and a description of their actions.

Display Option	Settings	Description
Magic Window	On	Turning off magic window will allow you to view pictures one at a time during slide show
	Off	
Display Image Size	Original/Optimal	The Digital Picture Frame can optimize your photos to display on the screen.
Slide Show Transition	Normal	Special effects shown to transition from one photo to the next in a Slide Show.
	Random	
	Fade	
	Curtain	
	Open_Door	
	Cross_Comb	
Slide Show Speed	Fast	Determines how quickly the next photo is displayed.
	Medium	
	Slow	
Slide Show Music	On/Off	The selected music file will repeat continuously, or play once.
Slide Show Shuffle	On/Off	Displays photos randomly.
Video Playback Repeat	Repeat Single	Choose to repeat a single video playback, all videos, or none.
	Repeat All	
	No Repeat	
Audio Playback Repeat	Repeat Single	Choose to repeat a single audio file, all audio files, or none.
	Repeat All	
	No Repeat	
Power Saving	2 Hours	The Digital Photo Frame will turn itself off after the specified amount of time.
	4 Hours	
	8 Hours	
	No Power Saving	
Factory Default	--	Immediately returns all settings to the factory defaults. There is no warning message.
Copy File	This allows a file to be copied from a memory card into the internal flash memory.	
Delete File	This allows an image to be deleted from the internal flash memory.	
Rotate	This allows a file to be rotated 90 degrees clock-wise	
Zoom	This allows you to zoom into a picture.	
Brightness/ Contrast	This function allows you to adjust the brightness of the screen and adjust the contrast	
Color/ Tint	This function allows you to adjust the color and adjust the tint	
Set Current Time	Clock & Calendar setting	

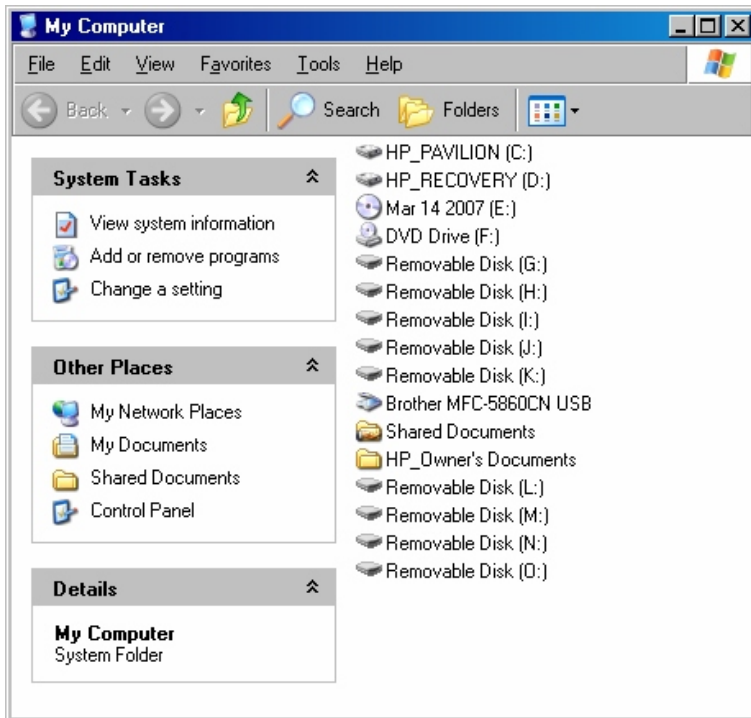
Advanced Operations

In addition to the basic functions described previously, you can connect the Digital Picture Frame to your computer to copy files to the built-in memory.

Connect to a Windows Computer

To copy files from between your computer and the Digital Picture Frame do the following:

1. Plug in and turn on the Digital Picture Frame.
2. Connect the small end of the USB cable to the USB port on the side of the Digital Picture Frame.
3. Connect the Larger end of the USB cable to a USB port on your computer.
4. Open My Computer on your Desktop. A window showing all drives connected to your computer opens.
5. Each memory card in the Digital Picture Frame and one for the built-in memory are listed as Removable Disk.
6. Double-click the desired drive to display the files on the card.
The example below shows a card with several JPG images on it.

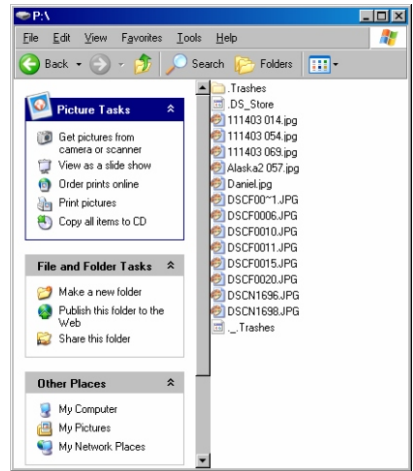


7. To copy files from the card, simply select them and drag them to the desired location on your computer.
8. To copy photos from your computer to the card; first locate the files on your computer.

Most cameras and graphic programs store photos in the Windows My Pictures folder. If you didn't move them somewhere else, they are probably there.

9. Select the files you wish to copy, choose File, Copy, and then move your cursor back to the open window for the removable card.
10. Click in the window, and choose File Paste.

Note: If your PC is connected to Local Area Network drives, or if you have multiple drive letters already assigned to peripheral devices, you will need to manage your drive settings in Windows to free up the four drive letters immediately following your CD-ROM drive so the Digital Picture Frame can assign them to memory card slots properly.



Disconnect the Digital Picture Frame from the Computer

It is important not to just unplug the Digital Picture Frame when you are done transferring files. It can seriously damage the memory.

1. In Windows, look for the USB icon and select Safely Remove Hardware. A dialog box opens.
2. Select USB Mass Storage Device and click Stop. Another Dialog box opens.
3. Click OK. A final dialog box opens.
4. Select Close. When the message It is Now Safe to Disconnect Hardware appears, you can disconnect the USB cable from your computer.

Connect to a Macintosh

You can also copy files from your Macintosh Computer to your Digital Picture Frame.

1. Use the included USB cable to connect your Digital Picture Frame to your Macintosh. Macintosh will recognize the Digital Picture Frame as an external storage device.
2. Drag and drop files between the two devices as you normally move photo files.
3. To safely disconnect the Digital Picture Frame from your Macintosh, select Digital Picture Frame's icon on your desktop and press Command-e to eject the disk. When the icon is no longer on the desktop, it is safe to unplug the USB cable.

Connect a USB Flash Drive

Your Digital Picture Frame will see a USB Flash Drive the same way it sees memory cards.

Frequently Asked Questions

Q: How do I set up my Digital Picture Frame?

A: It is very simple to get your Digital Picture Frame out of the box and running in just a few minutes. Just plug the power adapter into the Digital Picture Frame and into a standard Wall Socket. Insert a memory card into the appropriate card slot on the side of the Digital Picture Frame, and turn it on. Your first slide show will automatically start to play.

Q: What memory cards can the Digital Picture Frame Read?

A: Compatible memory cards include Secure Digital™, MultiMedia Card™, Compact Flash™, Memory Stick™, MemoryStick Pro™, Memory Stick Duo™, Memory Stick Pro Duo™, and xD card.

Q: I set up the Digital Picture Frame; why won't it turn on?

A: The Adapter is not securely connected to the Picture Frame or the Power Switch is not on.

Q: I have a memory card in the Digital Picture Frame; why can't I view my photos?

A: First, make sure that the memory card is one of the formats listed above and that the files on the card are JPEG images files. Second, turn the Digital Picture Frame Off and make sure that the memory card is inserted all the way into the card slot and is facing the correction. Third, turn the Frame On. After a couple of seconds, you should see your first photo. Press Exit to open the Card Selection screen and select the card. Then select Photos. You should see the Thumbnails screen listing all photos on the card. If you don't, you may want to try another card.

Note: Some digital cameras save images in other formats. Please refer to your camera's manual if your photos are not JPEG files.

Q: Why is the picture display slower with some pictures and faster with others?

A: Higher resolution pictures load more slowly. Try using lower resolution pictures or down sampling your images. See your camera's operating manual for details on downsampling your photos.

Q: Can I insert multiple memory cards?

A: Yes. Turn on the unit before inserting any card. The Card Selection Screen lets you choose between all available memory cards.

Q: Does the Digital Picture Frame have built-in memory?

A: Yes. It has built-in of memory. The volume depends on your model.

Q: Does the Digital Picture Frame support all JPEG and Motion JPEG files?

A: No, it supports JPEG and Motion JPEG files taken from a digital camera. The Digital Picture Frame may not read all images or video files downloaded from the Internet or from other software graphic applications. Some video formats downloaded from the Internet are not supported either.

Technical Specifications

Product:	12.1" LCD Digital Picture Frame
Input Formats:	Secure Digital™, Multi Media Card™, Compact Flash™, xD-Picture Card™, Memory Stick™, Memory Stick PRO™, Memory Stick Duo™, Memory Stick PRO Duo™ and USB Flash Drives
File Format:	JPEG, AVI Motion JPEG
Features:	Individual Picture View and Slide Show Range of Transitional Styles for Slide Show Variable Speed for Slide Show Random Picture Shuffle Set Favorite Picture Copy and Save Functions Color Adjustment Functions AVI Motion JPEG Player Extendable Stand for Angle Adjustment Wall-mountable VESA hole pattern (75mm x 75mm) Setting Power On / Off Automatically
Internal Memory:	Optional
USB Ports:	Mini-USB (for file transfer) USB (for USB Flash Drives)
Power: Input:	100V-240V AC, 50~60HZ
Output:	12V DC, 1.5A

Changes or modifications not expressly approved by the party responsible for compliance could void the user's authority to operate the equipment.

This equipment has been tested and found to comply with the limits for a Class B digital device, pursuant to Part 15 of the FCC Rules. These limits are designed to provide reasonable protection against harmful interference in a residential installation. This equipment generates uses and can radiate radio frequency energy and, if not installed and used in accordance with the instructions, may cause harmful interference to radio communications. However, there is no guarantee that interference will not occur in a particular installation. If this equipment does cause harmful interference to radio or television reception, which can be determined by turning the equipment off and on, the user is encouraged to try to correct the interference by one or more of the following measures:

- Reorient or relocate the receiving antenna.
- Increase the separation between the equipment and receiver.
- Connect the equipment into an outlet on a circuit different from that to which the receiver is connected.
- Consult the dealer or an experienced radio/TV technician for help