

LUXENTIA™



# 7" Digital Picture Frame User Manual





## TABLE OF CONTENTS

Introduction.....	1
Packaging Contents.....	2
Using the Remote Control.....	4
Viewing Media.....	5
Setting the Viewing Options.....	11
Adding Pictures from a Computer.....	13
Cleaning the Digital Picture Frame.....	17
Technical Specifications.....	18
Troubleshooting.....	19
Important Safety Instructions.....	21
Warranty Information.....	22

# Introduction

Welcome to the wonderful world of Digital Picture Frames! Now you can display your digital photos directly from your memory card, without a computer. Simply insert a memory card into the Digital Picture Frame and turn on the power. It's as easy as that. You can also display individual photos, play video clips, and play background music with your slide show.

The Digital Picture Frame includes these key features:

- Displays digital photos (JPEG) without a computer
- Simply insert a compatible memory card into the digital picture frame to display photos, play music or supported video files( memory card not included).
- Compatible memory cards include Secure Digital™, Multimedia Card™, Memory Stick™, Memory Stick Pro™, Memory Stick Duo™, Memory Stick Pro Duo™ and xD Card.
- Instantly plays music (MP3) with the integrated speakers (not included in all models)
- Digital photo slide show with music background
- Displays JPEG images and motion JPEG files (AVI) taken on digital camera (varies by model)
- Supports up to 12 Mega Pixel image files (JPEG format)
- Control the main functions with buttons on the frame or with the included infrared remote control
- Bright TFT LCD screen
- USB 2.0 high-speed connection to your PC
- USB 2.0 (host) for connecting to your digital camera
- Built in memory (varies by models)

To learn more about your new Digital Picture Frame's features, and to take full advantage of them, please take a few minutes to read this User's Manual.

# Package Contents

- Digital Picture Frame
- AC Power Adapter (5V, 2A)
- User's Manual
- Remote Control
- USB Cable (may not be included with select models)

## Setting up the Digital Picture Frame

The Digital Picture Frame is easy to set up. Just follow these steps:

1. Plug the AC Power Adapter into the Digital Picture Frame and into a wall outlet.
2. Insert a memory card into the appropriate slot.  
Secure Digital™ or Multimedia Card™, Memory Stick™, Memory Stick Pro™, Memory Stick Duo™, Memory Stick Pro Duo™, xD Picture Card™.
3. Pull out adjustable stand to adjust the viewing angle.



NOTE: The card will only fit in one direction; do not force it. The card should fit snugly when properly inserted.

4. Slide the power switch to the "ON" position to turn the Digital Picture frame on. The Digital Picture Frame will automatically start a slide show of the photos on the card.
5. To display photos individually, press the "EXIT" button to open the thumbnails screen. Use the arrow buttons to choose a photo. Press the "PLAY" button (>/II) on top of the Digital Picture Frame, or the "ENTER" button on the remote control.

NOTE: Pull the plastic tab sticking out of the remote control. It protects the battery and the remote control with not work unless it is removed.

6. To restart the slide show, press the "PLAY" button(>/II) again or press the slide show button on the remote control.

## Using the Control Buttons and Remote Control

You can use all of the Digital Picture Frame's features with either the buttons on top of the frame or using the remote control.

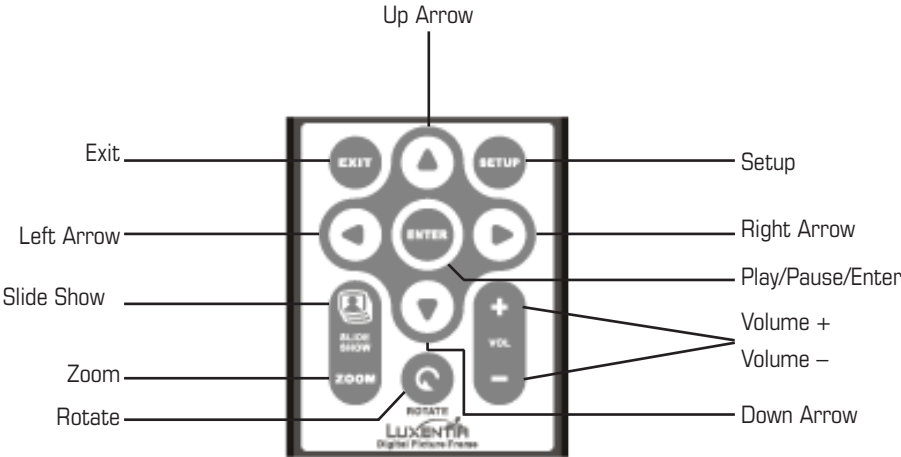
### Using the Control Buttons

The control buttons are located on top of the Digital Picture Frame. Their basic functions are the same no matter what the current mode is.

Button	Action
<<	Move the selection up or left, display the previous photo, or select the previous file.
>II	Select the highlighted option, start a slide show, pause or play.
>>	Move the selection down or right, display the next photo or select the next file.
EXIT	Exit the current display or go back a screen.
MENU	Opens the OSD Menu MODE

# Using the Remote Control

The remote control included with your Digital Picture Frame may look slightly different from the one shown here, but it includes all of the same buttons and functions.



## Installing and Replacing the Remote Control Battery

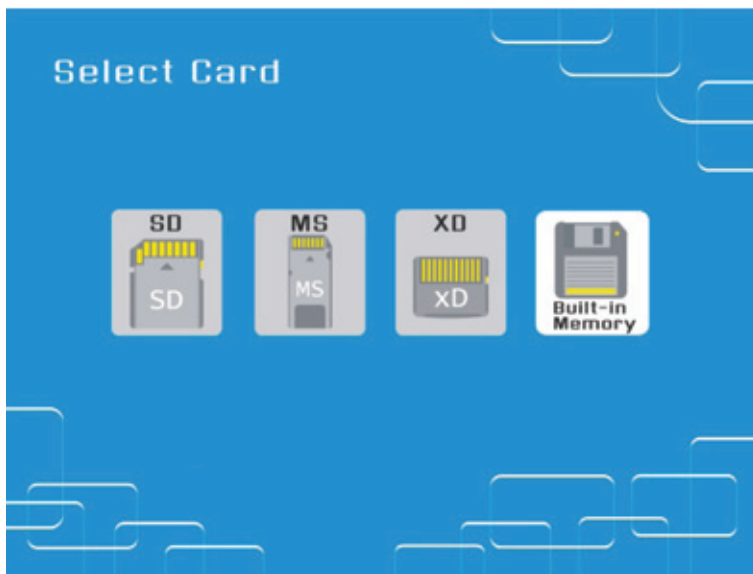
1. Hold the remote control with the control buttons facing downward.
2. While pressing down the ridged area of the battery cover, pull the tray out.
3. Place a “CR2025” Lithium battery on the tray with the positive “+” end facing towards you.
4. Close the tray.

## Viewing Media

You can control all of the Digital Picture Frame's functions with the buttons on top of the frame or with the remote control. To display the setup screen, you simply hold down the "EXIT" button for a second, or press the "SETUP" button on the remote control.

### Card Selection Screen

Use the Card Selection menu to choose between memory cards and the built-in memory (if its provided on your unit).

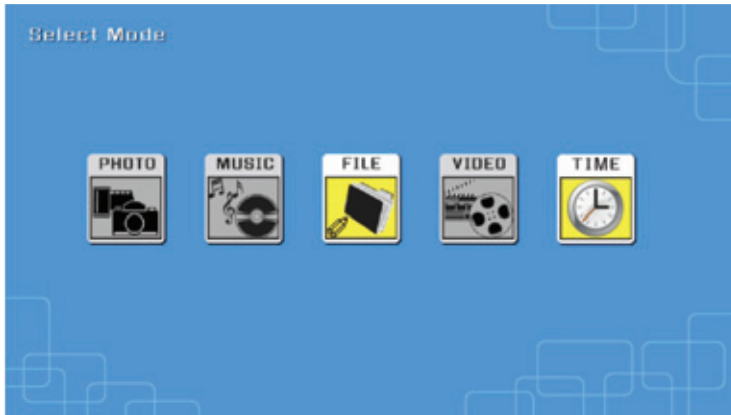


1. To open the card select menu, either insert a new card, or press the "EXIT" button repeatedly to back through the screen until you see it.
2. Press the "LEFT" or "RIGHT" arrows to select the desired memory card or built in memory.
3. Press "ENTER" to make the selection and to enter the "Mode Selection" screen.
4. The "built-in memory" icon only appears on models that come preloaded with memory.



## Mode Selection Screen

The Mode Selection Screen shows after you choose the memory source. Use it to choose the type of files you wish to display.



Slide Show	Run slide show
Photo	Display JPEG still photos
Music	Play audio files (varies by model)
Video	Play motion JPEG AVI movies (varies by model)
Clock	Clock and Calendar (varies by model)

1. Press the "LEFT" and "RIGHT" arrows using the buttons on the remote control or on the Digital Picture Frame to select the mode.
2. Press "ENTER" to make the selection. If you selected PHOTO, the thumbnail screen opens. It is described below.

NOTE: If you selected any of the other file types, a screen listing all of the files with the chosen type will open. You simply select the files you want to play using the arrow buttons and press "ENTER" to open the selected file.

3. To go back to the mode selection screen, press "EXIT".

## Thumbnail Screen

This screen shows thumbnail versions of all photos on the selected memory source; up to 6 photos are displayed at a time. Use this screen to select a single photo to display, or to start a slide show of all of the photos.

1. Press the arrow buttons on the remote control or on the Digital Picture Frame until the desired photo is highlighted. The photo's filename is displayed at the top of the screen.
2. Press the "SLIDE SHOW" button to start a slide show.
3. To stop the slide show and return to the thumbnail screen, press the "EXIT" button.

### Displaying a Single Photo

1. With the thumbnails screen displayed, press "ENTER" to display the selected photo on the full screen.
2. Press the "LEFT" arrow to return to the previous photo.
3. Press the "RIGHT" arrow to display the next photo.
4. To stop the display and return to the thumbnail screen, press the "EXIT" button.

### Controlling the Slide Show and Photo

The Digital Photo Frame provides many options for customizing the display and managing files. These options are available when viewing the photos only.

### Rotating a Photo

You can rotate a photo displayed full-screen using the remote control. Press the "ROTATE" button to rotate the photo 90 degrees counterclockwise.

### Enlarging a Photo

To magnify a photo displayed full-screen, press the "ZOOM" button.

- The photo doubles in size each time you press the button until it is 16x its normal size. Then it will return to normal size
- While the photo is in enlarged, use the arrow buttons to move the photos so you can see the portions that aren't currently available.

## **Copying the Displayed Photo to the Built-In Memory**

Use the remote control to copy the displayed photo from the memory card to the built-in memory. NOTE: This function is only available on models with built-in memory.

1. While viewing a photo, press the "SETUP" button.
2. Press the Up or Down arrow to select copy photo.
3. Press "ENTER". A confirmation message is displayed.
4. Press "EXIT" to close the menu.

## **Deleting the Displayed Photo**

Using the remote control to delete the currently displayed photo.

1. While viewing a photo, press the "SETUP" button.
2. Press the Up or Down arrow to select Delete Photo
3. Press "ENTER" and confirm the deletion.

CAUTION: The photo will be deleted immediately; you can not recover deleted photos.

4. Press "EXIT" to close the menu.

NOTE: You can also delete photos using the computer when the Digital Picture Frame is connected to a computer. Simply delete unwanted files or photos off of the internal memory (if available).

## **Adjusting the LCD Color**

Choose this option to adjust the Brightness, Contrast, and color of the LCD display while viewing a picture.

1. Press the "SETUP" button.
2. Press the "UP" or "DOWN" arrow to select adjust LCD color.
3. Press "ENTER". A second menu should open.
4. Use the arrow buttons to select an option to adjust
5. When the display looks the way you want it to, press "EXIT" to close the menu.

## **Adding Music to the Slide Show**

To add background music with a slide show copy audio files onto the same memory card as your photos. The music will play as the slide show runs. See “Copying Files from a computer” for details on copying files.

NOTE: Music files must be standard MP3 format.

NOTE: This function is only available on select models.

## **Copying the Displayed Photo to the Built-In Memory**

1. When viewing a picture you wish to move to the built-in memory of the Digital Picture Frame, press the “SETUP” button.
2. Using the up and down arrow buttons, select the “Copy Photo” option.
3. Press “ENTER” to confirm your selection.
4. Press “EXIT” to return to picture mode and to exit the menu.

NOTE: You can also delete photos from the thumbnail screen by pressing the “SETUP” button and choosing the “Copy Photo” option.

NOTE: This function is only available on models with built-in memory.

## **Listening to Music**

If there are music files on a memory card or in the built-in memory, you can play them on the Digital Picture Frame.

1. Use the remote control to open the “SELECT MODE” screen and select “MUSIC”. A new screen opens listing all of the music files on the selected card.
2. Use the left and right arrows to choose a file.
3. Press the “ENTER” button to play the file.
4. To stop the music and return to the music screen, press the “EXIT” button.

NOTE: This function is only available on select models.

## **Controlling the Volume**

Use the remote control to adjust the volume by using the “Vol+” or “Vol-” buttons when playing videos or audio files.

## **Watching a Video**

You can watch video files on your Digital Picture Frame as well. It supports the Motion JPEG (AVI) video format used by most digital cameras.

NOTE: This function is only available on select models. Please refer to the product for specifications.

1. Insert a memory card with video files on it. When the “CARD SELECTION” screen opens, select the appropriate memory source.
2. Press “ENTER” to open the “mode selection screen”.
3. Use the arrow keys to choose “video” and press “ENTER”. A screen listing all of the video files will open.
4. Use the arrow buttons to select and play the desired video file.
5. Adjust the volume by using VOL+/VOL- on the remote control.
6. Press the arrow buttons to play the next or previous video file.

## **Setting the Clock and Calendar**

The Digital Photo Frame supports the functions of a clock and calendar. Enter clock mode and select “SETUP”. You will see the option “Set Current Time”.

NOTE: This function is only available on select models.

1. Press the Left/Right key to choose the hh-mm-MM-DD-YY, and press Up/Down key to modify the date or time and press “ENTER” to save the time.

## Setting Viewing Options

You can control all of the viewing options in the Setup Menu using the buttons of the top of the frame or using the remote control. You can display the on-screen Setup Menu any time the Digital Picture Frame is not displaying photos or videos, by pressing the "SETUP" button.

1. To show the Setup menu during a photo or video, press the "EXIT" button, then the "SETUP" button.
2. With the setup menu open, use the Up and Down arrows to choose a display option.
3. Press "ENTER" to select the option. A second menu opens, listing the available settings.
4. Use the up and down arrows to choose the desired setting.
5. Press "ENTER" to select the setting.
6. You can make as many changes as you wish in the same manner. When you are finished, press the "EXIT" button to close the settings menu and return to the previous screen.
7. The table on the following page lists the display options in the setup menu, their options, and a description of each.

OSD Menu	Description and Function of Operation
Image Size	This function allows you to adjust how the image fits on the screen. "Original" retains the original aspect ration of the image. "Optimal" optimizes the image to fit the screen.
Slide Show Effect	This function allows you to choose the transition style of Slide Show.
Slide Show Speed	This function allows you to choose the speed of the Slide Show.
Slide Show Shuffle	This function allows images to be displayed in random order and can be turned on or off.
Video Repeat	This function selection allows video files to automatically repeat itself when finished.
Copy File	This function allows a file to be copied from a memory card into the built-in memory.
Delete File	This function allows an image to be deleted from the built-in memory.
Rotate	This function allows a file to be rotated 90 degrees clock-wise.
Zoom	This function allows you to zoom into a picture.
Set Favorite	This function allows you to choose and select multiple images to copy from the memory card to the built-in memory.
Reset Settings	Resets all settings back to default.
Language	Changes the OSD menu language to the following options: English, Italian, German, French, Spanish, Portuguese, or Dutch.
Brightness/Contrast and adjust the contrast.	This function allows you to adjust the brightness of the screen
Color/Tint	This function allows you to adjust the color and/or adjust the tint.
Set Current Time	Clock & Calendar setting

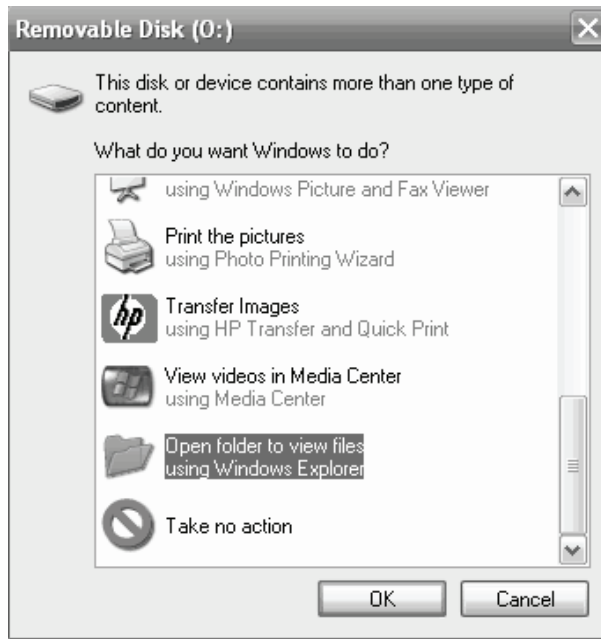
NOTE: The menu features on your Digital Picture Frame may or may not be available depending on your model.

# Adding Pictures From a Computer

## Connecting the Digital Picture Frame (DPF) to a Computer

NOTE: This function is only available on models with built-in memory.

1. Connect the power adapter to the Digital Picture Frame and plug the other end into a grounded power outlet.
2. Slide the Power Switch to the “ON” position.
3. Connect the smaller end of the USB cable to the USB port on the side panel of the Digital Picture Frame and the larger end to your computer’s USB port.
4. A menu will appear asking what you would like Windows to do with the new connected device. Click “Open folder to view files” and press OK. If this menu does not appear, open up your file browser by double-clicking the “My Computer” icon in the Windows Start Menu.





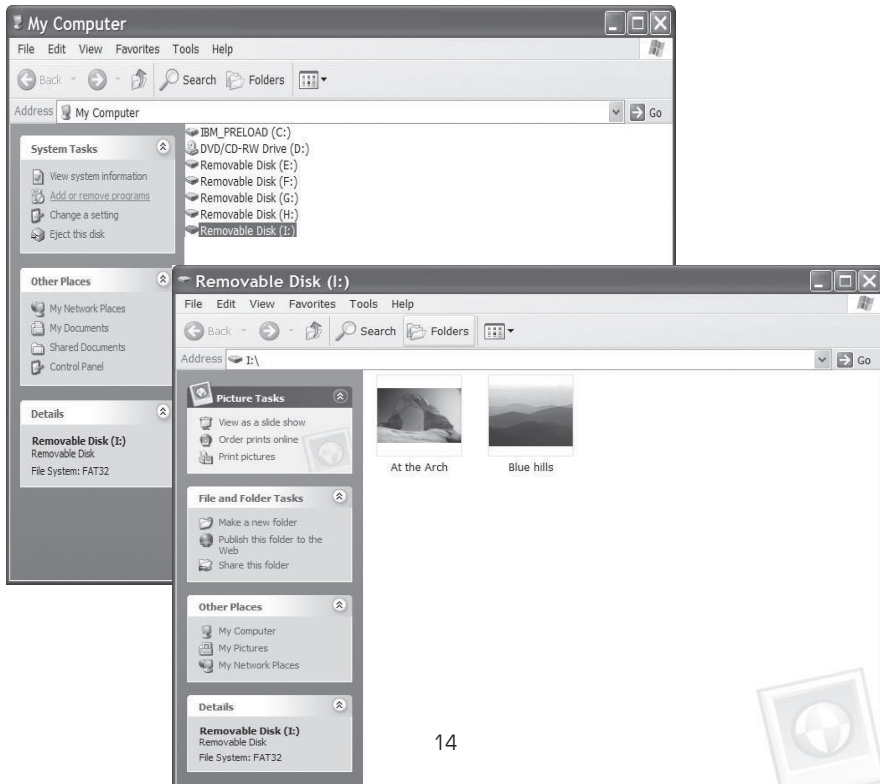
5. There will be up to five drive letters entitled “Removable Disk” – one for each of the memory card slots on the Digital Picture Frame and one for the built-in memory. Double-click the appropriate “Removable Disk” icon to access the built-in memory, or any of the memory card slots.

6. To copy photos from your computer to the built-in memory, first locate the files on your computer.


7. Select the file(s) you wish to copy. Under the Edit tab, select copy. Then go back to the previous window and select the drive letter that corresponds to the built-in memory.

8. Under the Edit tab of your computer’s file browser, click Paste.

NOTE: When the Digital Picture Frame is connected to a computer, it has the same functionality of a multiple memory card reader.



# Disconnecting the Digital Picture Frame from the Computer

1. Make sure that there are no files being transferred at this time.
2. In Windows, on the bottom task bar, right-click the  icon and select "Safely Remove Hardware."
3. The "Safely Remove Hardware" dialog box will appear. Select "USB Mass Storage Device" and click STOP.
4. On the next dialog box, click OK to remove the storage device.
5. On the final dialog box, select CLOSE and disconnect the USB cable from your computer.



## Connecting to a Macintosh

You can also copy files from your Macintosh Computer to your Digital Picture Frame.

1. Use the included USB cable to connect your Digital Picture Frame to your Macintosh. Your Macintosh will recognize the Digital Picture Frame as an external storage device.
2. Drag and drop files between the two devices as you normally move photo files.
3. To safely disconnect the Digital Picture Frame from your Macintosh, select the Digital Picture Frame icon on your desktop and press Command-E to eject the disk. When the icon is no longer on the desktop, it is safe to unplug the USB cable.

# Cleaning the Digital Picture Frame

MAKE SURE THE DIGITAL PICTURE FRAME IS TURNED OFF. NEVER SPRAY OR POUR LIQUIDS DIRECTLY ONTO THE SCREEN OR PLASTIC CASING.

## To clean the screen:

1. Wipe the screen with a clean, soft, lint-free cloth. This removes dust and particles.
2. If it is still not clean, apply a small amount of non-ammonia, alcohol-free glass cleaner on a clean, soft, lint-free cloth and wipe gently.

## To clean the plastic casing:

1. Use a soft, dry cloth.
2. If it is still not clean, apply a small amount of non-ammonia, alcohol-free, mild non-abrasive detergent to cloth and gently wipe surface.

## To clean the frame:

1. Use a soft, dry cloth.
2. Gently wipe the surface.

**LUXENTIA** does not recommend the use of any ammonia or alcohol-based cleaners on the LCD screen or plastic casing. Some chemical cleaners have been reported to damage the screen and/or display case. LUXENTIA is not liable for damage resulting from the use of any ammonia or alcohol-based cleaners.

## Technical Specifications

Product:	7" LCD Digital Picture Frame
Resolution:	480 x 234 pixels
Input Formats:	Secure Digital™, MultiMedia Card™, Memory Stick™, Memory Stick PRO™, xD™, USB Flash Drives™, Memory Stick PRO Duo™, Memory Stick Duo™
File Format:	Standard JPEG; MJpeg, AVI (varies by model)
Features:	Slide Show Mode Multiple Transitional Styles for Slide Show Variable Speed for Slide Show Six Position Adjustable Stand for Optimum Viewing Angle
USB Port:	USB 2.0 (Host) and USB 2.0 (varies by model)
Power:	Input 100V-240V AC, 50~60HZ Output 5V DC, 2A
Certification:	CE/FCC/PSE(Adapter)/SGS/RoHS
Internal Memory:	128 MB (varies by model)
Internal Speakers:	2X1W (varies by model)

# Troubleshooting

**Q: What other media formats can the Digital Picture Frame support? Why won't it play all images or movie files?**

A: The Digital Picture Frame will support JPEG and Motion JPEG AVI taken from a digital camera. The Digital Picture Frame may not read all images or video files downloaded from the Internet. Many of the video formats downloaded from the Internet are not supported as well.

**Q: I have a memory card in the Digital Picture Frame, but it's not reading the card. What should I do?**

A: First, make sure that you are using a memory card that is supported by the Digital Picture Frame. Second, ensure that the memory card is inserted all the way into the correct slot. Third, press the Menu button until you reach the Card Select page. If the memory card is properly inserted into the slot, the memory card icon will be highlighted on the OSD.

NOTE: Some digital cameras save images into non-standard formats. Please refer to your camera's operating manual for specifics. Due to the slightly differing standards and capacities there may be some USB Flash Drives which will not work on this product.

**Q: Why do some pictures load faster than others?**

A: Higher resolution pictures load slower. Using a lower resolution when taking pictures will speed up loading time.

**Q: Why do some photos not show up on the Digital Picture Frame?**

A: If you are trying to view a black and white photo, make sure the format is 24 bit grayscale RGB (as opposed to full scale black and white). Please note all photos must be a JPEG file in RGB rather than CMYK format in order to be viewable.

**Q: I have connected my Digital Picture Frame to my computer with the USB cable, but I cannot find a drive letter for the internal memory. What should I do?**

A: After connecting the Digital Picture Frame to your computer, your computer should display up to five drive letters entitled "Removable Disk" – one for each of the memory card slots on the Digital Picture Frame and one for the internal memory. However, if you have any mapped network drives, your computer may experience a conflict in assigning drive letters to the Digital Picture Frame. As a workaround, it is recommended that you assign the highest available drive letter to your mapped network drive(s), such as X Y or Z.

**Q: What memory cards can the Digital Picture Frame read?**

A: Compatible memory cards include Secure Digital™, MultiMedia Card™, Memory Stick™, MemoryStick Pro™, Memory Stick Duo™, Memory Stick Pro Duo™, and xD card.

**Q: Can I insert multiple memory cards?**

A: Yes. However, the digital picture frame will read only one memory card at a time. If multiple memory cards are inserted, you have to choose the memory card you would like to view pictures from via the on-screen menu.

# Important Product Safety Instructions

## Proper Handling of the Digital Picture Frame

Always handle the Digital Picture Frame with care. Avoid touching the LCD screen as fingerprints may be difficult to remove. Always position the Digital Picture Frame on a stable and level surface. Unstable surfaces can cause the DPF to topple and fall, resulting in possible damage of the unit or personal injury.

Avoid exposing the Digital Picture Frame to direct sunlight or high temperatures.

This can lead to a malfunction or permanent damage of the unit. Do not place the DPF near heat sources such as radiators, heat registers, or other appliances that generate heat. Orient the DPF away from direct sunlight to reduce glare.

Avoid exposing the digital picture frame to rain, water, moisture, or high humidity. Do not place it near basins or sinks where it may come into contact with water. Never place heavy or sharp objects on the LCD panel, frame, or power cord.

## Overloading Outlets

Do not overload electrical power sources when using the Digital Picture Frame.

Overloading wall outlets, circuits, or extension cords can result in overheating, fire, or electric shock. Use only grounded or polarized outlets.

## Power Cord Protection

Minimize wear on the power supply cord. The power supply cord should be routed away from traffic and contact with other objects. Do not route the power cord under rugs or carpeting. The cord should never be severely bent, pinched, or twisted.

Periodically inspect the power cord and each end of the cord from wear or damage.

Unplug and replace the cord if it is damaged.

## Ventilation

Slots and openings on the Digital Picture Frame are provided for ventilation purposes.

To ensure reliable operation of the product and to protect it from overheating, these openings must not be blocked or covered. Keep the Digital Picture Frame a minimum of four (4) inches away from any wall to assure sufficient airflow and ventilation.

Increased temperatures may cause fire or device failure.

To ensure proper ventilation, do not block the openings by placing the DPF on a bed, sofa, rug or other similar surface. Do not place it in a built-in installation, such as a bookcase or enclosed rack, unless proper ventilation is provided.



## **Other Notices and Precautions**

### **Caution**

Never remove the plastic casing. There are no end user serviceable parts inside. The Digital Picture Frame contains high voltage parts. You may be seriously injured if you touch them.

Do not attempt to personally repair the unit. The warranty does not cover repairs or attempted repairs other than those authorized by **LUXENTIA**.

If the frame begins to emit smoke, abnormal noises, or a strange odor, immediately turn it off. Contact **LUXENTIA** for service information at 877-678-7340.

Unplug the power cord if the DPF will not be used for an extended period of time.

## **Warranty**

This item is warranted to be free from defects in materials or workmanship for a period of 1 year from the original date of purchase under normal conditions of household use. Within the warranty period we will repair or replace the product upon return of the product and presentation of sales receipt or other proof of purchase. This warranty extends only to the original retail purchaser, and excludes any damage to the product resulting from accident, misuse or attempted end-user repairs. The product is not warranted when used in a commercial or business environment.

The above warranty is complete and exclusive. The warrantor expressly disclaims liability for any special, incidental, indirect, or consequential damages in connection with the purchase or use of this product or costs over the original purchase price.

Any implied warranties arising by operation of law shall be limited in duration to the term of this warranty.

This warranty gives you specific legal rights and you may have other rights, which vary by jurisdiction. This warranty is valid only within the United States of America (USA).

For warranty claims or technical support, call toll free 877-678-7340 or email: [support@luxentia.com](mailto:support@luxentia.com)



This symbol is intended to alert the user of the presence of non-insulated dangerous voltage within the product's enclosure that may be of sufficient magnitude to constitute a risk of electric shock to a person.



This symbol is intended to alert the user of the presence of important operation and maintenance instructions in the Digital Picture Frame User Manual.



**CAUTION**

TO REDUCE THE RISK OF FIRE OR ELECTRIC SHOCK, DO NOT EXPOSE THIS UNIT TO RAIN OR MOISTURE.



**CAUTION**

TO REDUCE THE RISK OF ELECTRIC SHOCK, DO NOT REMOVE THE PLASTIC CASE. NO SERVICEABLE PARTS ARE INSIDE. REFER SERVICING TO QUALIFIED PERSONNEL.

Model: 7" Digital Picture Frame Rev 5a

© 2008 All Rights Reserved

Windows is a registered trademark of Microsoft Corporation.

Luxentia is a registered trademark of Tag Digital Media.

For warranty claims or technical support, call toll free 877-678-7340 or email:  
[support@luxentia.com](mailto:support@luxentia.com)

Printed in China

Changes or modifications not expressly approved by the party responsible for compliance could void the user's authority to operate the equipment.

This equipment has been tested and found to comply with the limits for a Class B digital device, pursuant to Part 15 of the FCC Rules. These limits are designed to provide reasonable protection against harmful interference in a residential installation. This equipment generates uses and can radiate radio frequency energy and, if not installed and used in accordance with the instructions, may cause harmful interference to radio communications. However, there is no guarantee that interference will not occur in a particular installation. If this equipment does cause harmful interference to radio or television reception, which can be determined by turning the equipment off and on, the user is encouraged to try to correct the interference by one or more of the following measures:

- Reorient or relocate the receiving antenna.
- Increase the separation between the equipment and receiver.
- Connect the equipment into an outlet on a circuit different from that to which the receiver is connected.
- Consult the dealer or an experienced radio/TV technician for help