

Displaying Your Favorite Pictures is Easy and Fun

10.4inch

Digital Picture Frame



User's Manual

Table of Contents

Table of Contents	2
Important Safety Precautions	3
Cleaning the LCD Screen.....	3
Cleaning the Digital picture Frame.....	3
What's in the Box	4
Identifying the Parts.....	4
Replacing Remote Control Battery.....	5
Product Specification	5
Features.....	5
Specification.....	6
How to Use Your Digital Picture Frame	6
Turning On and Off.....	6
Connecting to PC.....	6
Feature Selection Screen.....	7
Photo.....	7
Slideshow Mode.....	7
Thumbnail Mode.....	7
Single View Mode.....	7
Video.....	8
Music.....	9
VividShare.....	9
Calendar.....	10
Monthly Calendar.....	10
Calendar.....	10
Clock.....	11
File Manager.....	11
Setup.....	12
System Setup.....	12
Photo Setup.....	12
Calendar Setup.....	12
Video Setup.....	12
Music Setup.....	12
VividShare.....	12
Frequently Asked Questions	13

Important Safety Precautions

Always follow these basic safety precautions when using your Digital Picture Frame. This will reduce the risk of fire, electric shock, and injury.

Warning: To reduce the risk of fire or shock hazard, do not expose this product to rain or moisture.

Warning: To prevent the risk of electric shock, do not remove the cover. There are no user-serviceable parts inside. Refer all servicing to qualified personnel.

- The Digital Picture Frame is for indoor use only.
- Unplug the Digital Picture Frame before performing care and maintenance.
- Do not block the ventilation holes on the back of the Digital Picture Frame at any time.
- Keep your Digital Picture Frame out of direct sunlight and heat sources.
- Protect the power cord. Route power cords so that they are not likely to be walked on or pinched by items placed on or against them. Pay particular attention to the point where the cord attaches to the Digital Picture Frame.
- Only use the AC adapter included with the Digital Picture Frame. Using any other power adapter will void your warranty.
- Unplug the power cord from the outlet when the unit is not in use.

Cleaning the LCD Screen

Treat the screen gently.

To clean fingerprints or dust from the LCD screen, it is recommended to use a soft, non-abrasive cloth such as a camera lens cloth to clean the LCD screen.

If you use a commercial LCD cleaning kit, do not apply the cleaning liquid directly to the LCD screen. Clean the LCD screen with cleaning cloth moistened with the liquid.

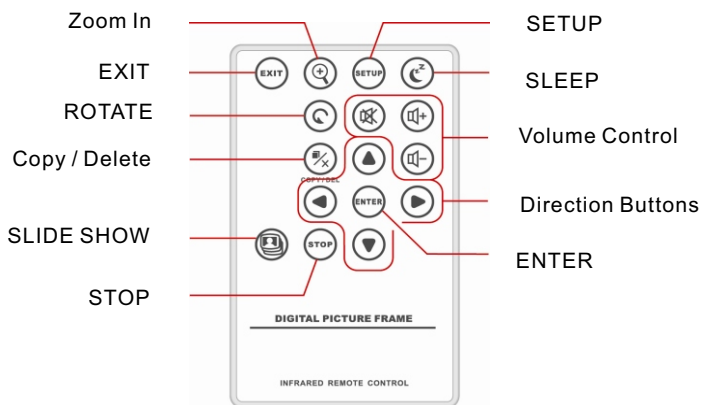
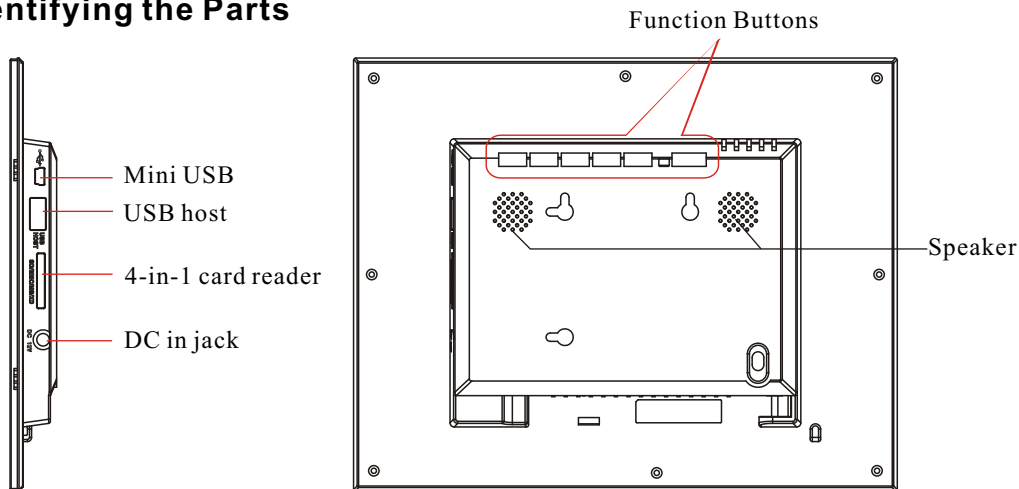
Cleaning the Digital Picture Frame

Clean the outer surface of the Digital Picture Frame (excluding the screen) with a soft cloth dampened with water.

What's in the Box

- Digital Picture Frame
- Power Adapter
- Remote Control
- USB cable
- User's Manual

Identifying the Parts



Replacing Remote Control Battery

If the remote control stops working or works improperly, replace the battery (CR2025 lithium battery) with a new one.

1. Pull out the battery holder.
2. Remove the old battery from the holder and then put a new battery with “+” facing up.
3. Insert the battery holder back to the remote control.

Warning

Battery may explode if mistreated. Do not recharge, disassemble or dispose of in fire

Notes

- When the lithium battery becomes weak, the operating distance of the Remote Control may shorten, or the Remote Control may not function properly. In this case, replace the battery with a CR2025 lithium battery. Use of another battery may present a risk of fire or explosion.
- Dispose the used batteries as specified by the local authorities.
- Do not leave the Remote Control in a very hot and humid place.
- Incorrect use of the battery may cause leaking and corrosion.
 - When the Remote control will not be used for a long period of time, remove the battery from the remote control to prevent leaking and corrosion.
 - Incorrectly inserting, shorting, dismantling, or heating the battery, or throwing it into a fire may cause the battery to rupture and leak.

Product Specification

Features

- Supports JPEG and BMP image formats
- Image rotation, zoom in, background music, and auto-slideshow with effects
- Displays clock, calendar, and monthly calendar
- Auto-rotating
- Plays personalized stories with VividShare function
- Supports USB update

Specification

Product	10.4" Digital Photo Frame
Resolution	800X600 Pixel
Memory Card Formats	Secure Digital™, Multi-Media Card™, Memory Stick™, Memory Stick Pro™, Memory Stick Duo™, Memory Stick Pro Duo™, and USB flash drives
Image Formats	JPEG, BMP
Audio Formats	MP3, WAV, WMA, OGG
Video Formats	MPEG-4, AVI, 3GP, MOV
USB Ports	USB 2.0 (Host) x 1, mini-USB x 1
Power Input	AC 100V~240V, 50~60Hz
Power Output	DC 12V/1.5A
Internal Speakers	1.5W X 2
Certification	CE / FCC / RoHS

How to Use Your Digital Picture Frame

Turning On and Off

- To turn the Digital Picture Frame on, just simply plug the AC adapter to a wall outlet and the Digital Picture Frame then switch the POWER switch to ON position or press the POWER button, and the system will shows the Feature Selection Screen
- To turn off the Digital Picture Frame, just switch the POWER switch to OFF position or press and hold the POWER button until the screen is blackened. *

* The power switch or the power button may vary from different models.

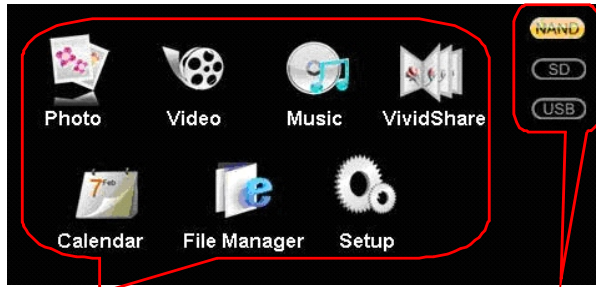
Connecting to PC

At any time connecting the Digital Picture Frame to the PC, it will enter USB mode. The screen will show the message "connecting to PC". In USB mode, the Digital Picture Frame functions as a USB flash drive. To exit USB mode, simply unplug the USB cable or press ESC key.

Note: If the Digital Picture Frame includes VividShare feature, the VividShare PC Tool will pop on the PC screen when the Digital Picture Frame and the PC are connected. Please see VividShare section on page 9 for detail.

Feature Selection Screen

The Digital Picture Frame will enter the Feature Selection Screen when powered on. (The screen may vary from different models)



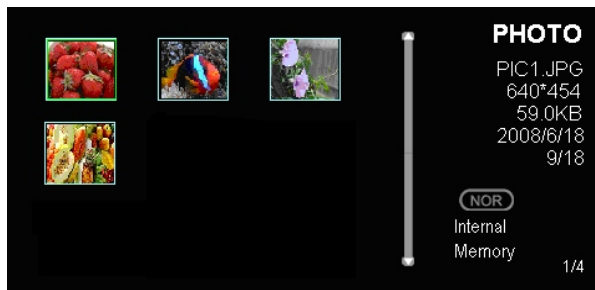
Feature Options

Storage type: built-in memory, memory cards, or USB massive storage device

If there is not any operation for 8 seconds in the Feature Selection Screen, the Digital Picture Frame will start the slideshow automatically.

Photo

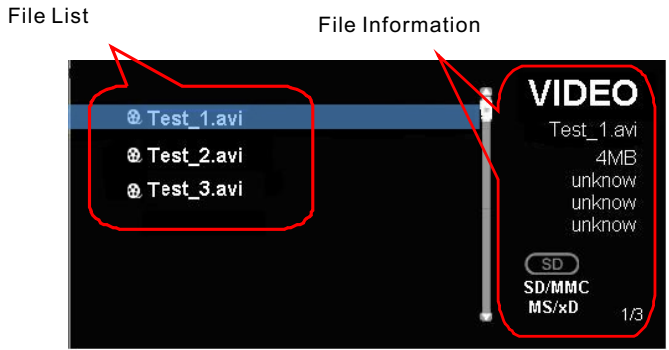
- **Slideshow Mode:** the images are displayed one by one. Pressing the SLIDESHOW button will start the slideshow. You can setup the display duration, effects, and image display ratio in the Setup menu by pressing SETUP button on the remote control.
- **Thumbnail Mode:** the screen is split to 2 portions; the left portion shows the thumbnails and the right portion displays the image information (image name, resolution, file size, image created date...etc)



- **Single View Mode:** select the desired image in Thumbnail mode and press enter to display the image in full screen. The image will be displayed constantly. Press LEFT/RIGHT button on the remote control to view last/next image, or press ESC/Exit to return to Thumbnail Mode.

Video

- Select Video in Feature Selection Screen will show the video file list.



- Press ENTER to play the video file.



While playing the video, the playing time and the video length are shown at the bottom.

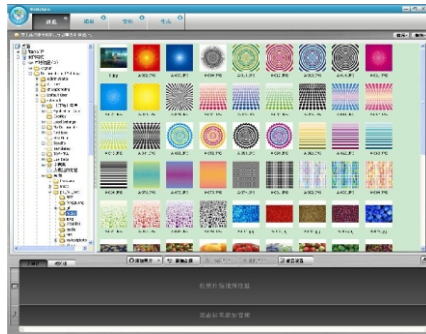
Button	Function
EXIT	Exit to file list
LEFT	Backward
RIGHT	Fast forward
ENTER	Pause / Play
STOP	Stop the video

Music

- Select Music in Feature Selection Screen and the screen will show the music file list.
- Use UP and DOWN buttons to select the file.
- Press ENTER to play the music.

VividShare

VividShare is an advanced slideshow tool which can provide high-quality-effect slideshow. No software is needed to install on the PC. You can make your VividShare stories anywhere by simply connecting to a PC. When connecting to a PC, the VividShare PC tool pops up on the PC screen, as shown below.



With VividShare PC tool, you can add effects, background music, and decorations to a series of images. When you finish editing, the VVD file will be saved in the Digital Picture Frame.

In Feature Selection Screen, select VividShare and file selection screen shows as below. Use LEFT and RIGHT buttons to select the desired VividShare story.

The selected VividShare story will be in the middle. Press ENTER to start.



Calendar

There are 3 display modes: Monthly Calendar, Calendar, and Clock.

A. Monthly Calendar



Button	Function
EXIT	Exit to Feature Selection Screen
LEFT	Last image
RIGHT	Next image
UP	Last month
DOWN	Next month

B. Calendar



Button	Function
EXIT	Exit to Feature Selection Screen
LEFT	Last image
RIGHT	Next image
UP	Last month
DOWN	Next month

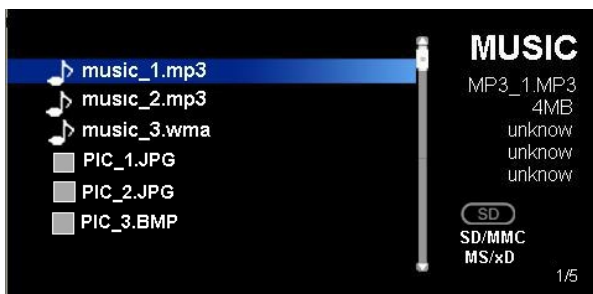
C. Clock



Button	Function
EXIT	Exit to Feature Selection Screen
UP	Last month
DOWN	Next month

File Manager

In Feature Selection Screen, select File Manager then press ENTER; the file list shows.



Button	Function
EXIT	Back to upper folder / Exit to Feature Selection Screen
UP	Select the upward file
DOWN	Select the downward file
LEFT	Delete file ^{**1} ^{**2}
RIGHT	Copy file to the internal memory ^{**3}
ENTER	Confirm

^{**1} Only files in the internal memory can be deleted.

^{**2} When a folder is deleted, the files in the folder will also be deleted.

^{**3} Only files from the memory cards can be copied to the internally memory; files can't be copied from the internal memory to the memory cards.

Setup

- In Setup, you can setup the system, photo, calendar, video, music, and VividShare.
- In the sub-setup menus, you can use below keys to change the settings.

Button	Function
EXIT	Back to upper folder / Exit to Feature Selection Screen
UP	Select the upward setting
RIGHT	Select the downward setting
LEFT/RIGHT	Change setting value

A. System Setup

Here you can adjust Backlight, Brightness, Gamma, Language, Auto-Power On/Off, Auto-Power Frequency, and Reset.

B. Photo Setup

Here you can change the photo Display Mode, Display Ratio, Slideshow Duration, Slideshow Effect, Slideshow Repeat, and Clock Display.

C. Calendar Setup

Here you can change the calendar Display Mode and adjust Date, Time, and Clock Mode.

D. Video Setup

Display Ratio and Play Mode can be modified here.

E. Music Setup

Music Effect and Play Mode can be modified here.

F. VividShare

You can set VividShare Play Mode here.

Frequently Asked Questions

Q: How do I set up my Digital Picture Frame?

A: It is very simple to get you Digital Picture Frame out of the box and running in just a few minutes. Just plug the power adapter into the Digital Picture Frame and into a standard wall socket. Insert a memory card into the appropriate card slot on the side of the Digital Picture Frame and turn it on. Your first slideshow will automatically start to play.

Q: What memory cards can the Digital Picture Frame read?

A: Compatible memory cards include Secure Digital™, Multi-Media Card™, Memory Stick™, Memory Stick Pro™, Memory Stick Duo™, and Memory Stick Pro Duo™.

Q: I set up the Digital Picture Frame; why does it not turn on?

A: The adapter may be not securely connected to the Digital Picture Frame or wall socket, or the Power Switch may not be on. Please check if the adapter is properly plugged to the Digital Picture Frame and the wall socket.

Q: I have a memory card in the Digital Picture Frame; why can't I view my photos?

A: First, check whether the memory card is one of listed above and the images are one of the formats listed in the **Specification** on page 6. Second, turn the Digital Picture Frame off and make sure that the memory is inserted all the way into the card slot and is facing the correct direction. Third, turn the Digital Picture Frame on; you should see the Feature Selection Screen. Press EXIT and the yellow NAND icon on the right side enlarges. Press DOWN button and the SD icon enlarges and become yellow. Press ENTER to choose Photo, the slideshow starts (factory default).

Note: Some digital cameras save images in other formats. Please refer to your camera's manual if your photo format is not listed in the **Specification**.

Q: Why is the picture display slower with some pictures and faster with others?

A: Higher resolution pictures will be loaded slowly. Try to use lower resolution pictures or down sampling your images. See your camera's operating manual for details on downsizing your photos.

Q: Does the Digital Picture Frame support all JPEG files?

A: No. The Digital Picture Frame supports the JPEG files taken by a digital camera. It may not read all images files downloaded from the Internet or from other graphic applications.

Changes or modifications not expressly approved by the party responsible for compliance could void the user's authority to operate the equipment.

This equipment has been tested and found to comply with the limits for a Class B digital device, pursuant to Part 15 of the FCC Rules. These limits are designed to provide reasonable protection against harmful interference in a residential installation. This equipment generates uses and can radiate radio frequency energy and, if not installed and used in accordance with the instructions, may cause harmful interference to radio communications. However, there is no guarantee that interference will not occur in a particular installation. If this equipment does cause harmful interference to radio or television reception, which can be determined by turning the equipment off and on, the user is encouraged to try to correct the interference by one or more of the following measures:

- Reorient or relocate the receiving antenna.
- Increase the separation between the equipment and receiver.
- Connect the equipment into an outlet on a circuit different from that to which the receiver is connected.
- Consult the dealer or an experienced radio/TV technician for help