

Wireless Network Card Installation Guide

System Requirements

- One available PCI 2.0/2.1/2.2/2.3 port
- One available USB 1.1/2.0 port
- Operating System: Windows ME/2000/XP/Vista/win7
- Minimum Disk Space: 2MB

Software Installation

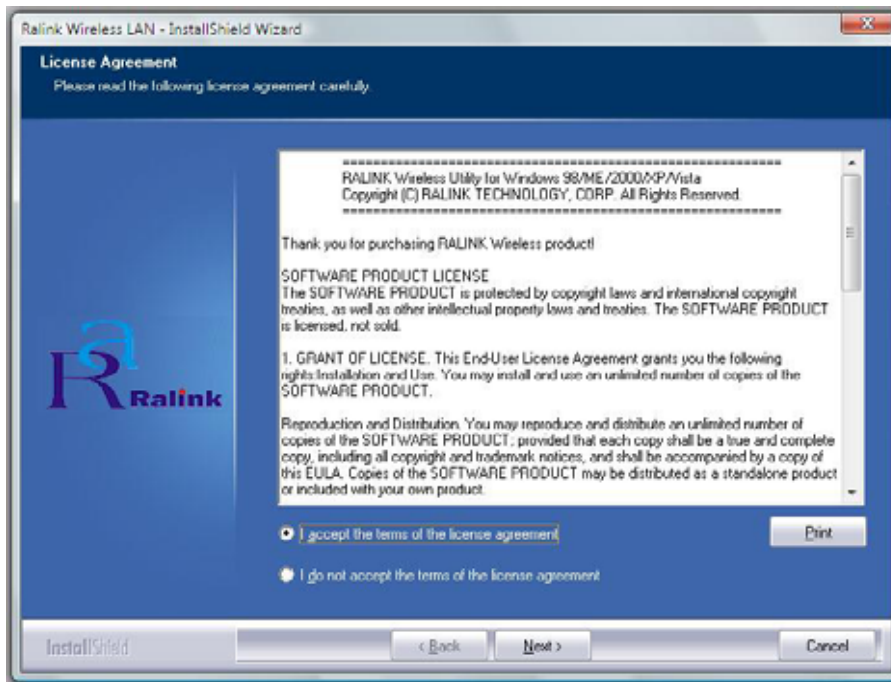
You must have the following information available before installing your Products

1. **Wireless Network Name (SSID) and,**
2. **Encryption/Network Key (if applicable)**

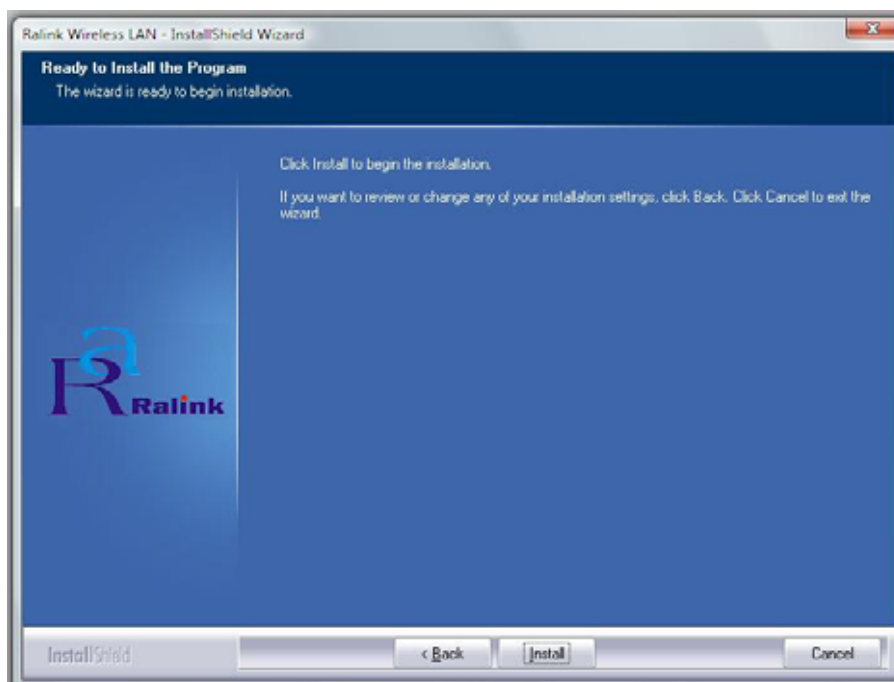
Note: Screen-shot images provided below is based on Windows Vista. You may see different screen on other operating systems but procedures are the same.

CAUTION: Products should NOT be inserted at this time. You will be asked to insert after the software is completely installed.

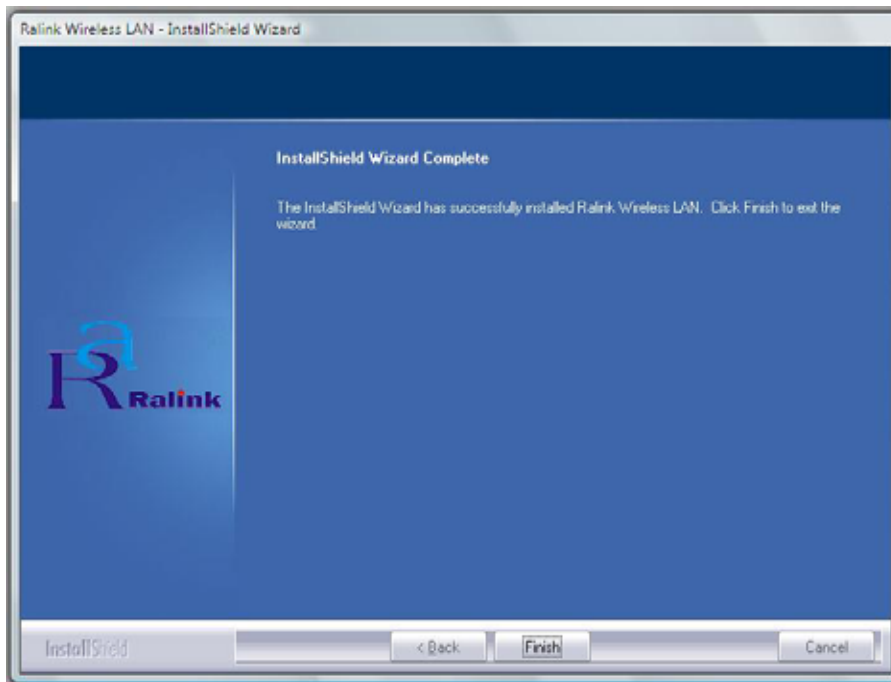
- A. Power on your computer and allow **Windows 2000/ME/XP/Vista/Win7** to load fully.
- B. Insert the installation CD to your CD-ROM and run "**Setup.exe**" program. "Ralink Wireless LAN – InstallShield Wizard" will appear on your screen, select "**I accept the terms of the license agreement**" then click "**Next.**".



- c. Click **“Install”** to begin the installation and it will copy all necessary files to your hard disk automatically.



- d. Click **“Finish”** when you see “InstallShield Wizard Complete” to finish the installation.



You will see “Configuration & Monitor Utility” icon appears on your system tray when the installation is completed successfully. If you don’t see the icon, we highly recommended you to restart the computer. However, if you still don’t see the icon appears, please uninstall and reinstall the software again.



FCC STATEMENT

1. This device complies with Part 15 of the FCC Rules.

Operation is subject to the following two conditions:

- (1) This device may not cause harmful interference, and
- (2) This device must accept any interference received, including interference that may cause undesired operation.

2. Changes or modifications not expressly approved by the party responsible for compliance could void the user’s authority to operate the equipment.

FCC ID: V36WL-GI-600N

NOTE: This equipment has been tested and found to comply with the limits for a Class B digital device, pursuant to Part 15 of the FCC Rules. These limits are designed to provide reasonable protection against harmful interference in a residential installation. This equipment generates, uses and can radiate radio frequency energy and, if not installed and used in accordance with the instructions, may cause harmful interference to radio communications. However, there is no guarantee that interference will not occur in a particular installation. If this equipment does cause harmful interference to radio or television reception, which can be determined by turning the equipment off and on, the user is encouraged to try to correct the interference by one or more of the following measures:

- Reorient or relocate the receiving antenna.
- Increase the separation between the equipment and receiver.
- Connect the equipment into an outlet on a circuit different from that to which the receiver is connected.
- Consult the dealer or an experienced radio/TV technician for help.

FCC RF Radiation Exposure Statement

This equipment complies with FCC RF radiation exposure limits set forth for an uncontrolled environment. This device and its antenna must not be co-located or operating in conjunction with any other antenna or transmitter.

"To comply with FCC RF exposure compliance requirements, this grant is applicable to only Mobile Configurations. The antennas used for this transmitter must be installed to provide a separation distance of at least 20 cm from all persons and must not be co-located or operating in conjunction with any other antenna or transmitter."