

SAR Plots

- Verification Plots
- SAR Test Plots

DT&C Co., Ltd.

DUT: Dipole 750 MHz; Type: D750V3; Serial: D750V3 - SN: 1049

Communication System: UID 0, CW (0); Frequency: 750 MHz; Duty Cycle: 1:1
Medium parameters used: $f = 750$ MHz; $\sigma = 0.905$ S/m; $\epsilon_r = 42.276$; $\rho = 1000$ kg/m³
Phantom section: Flat Section

DASY5 Configuration:

Probe: EX3DV4 - SN3866; ConvF(9.85, 9.85, 9.85); Calibrated: 5/28/2019; Electronics: DAE4 Sn1394
Sensor-Surface: 2mm (Mechanical Surface Detection)

Phantom: SAM-twin middle_2013_09_24; Type: QD000P40CD; Serial: 1782
Measurement SW: DASY52, Version 52.8 (8); SEMCAD X Version 14.6.10 (7331)

Test Date: 2019-07-30; Ambient Temp: 22.0; Tissue Temp: 21.9

750 MHz System Verification (250 mW)

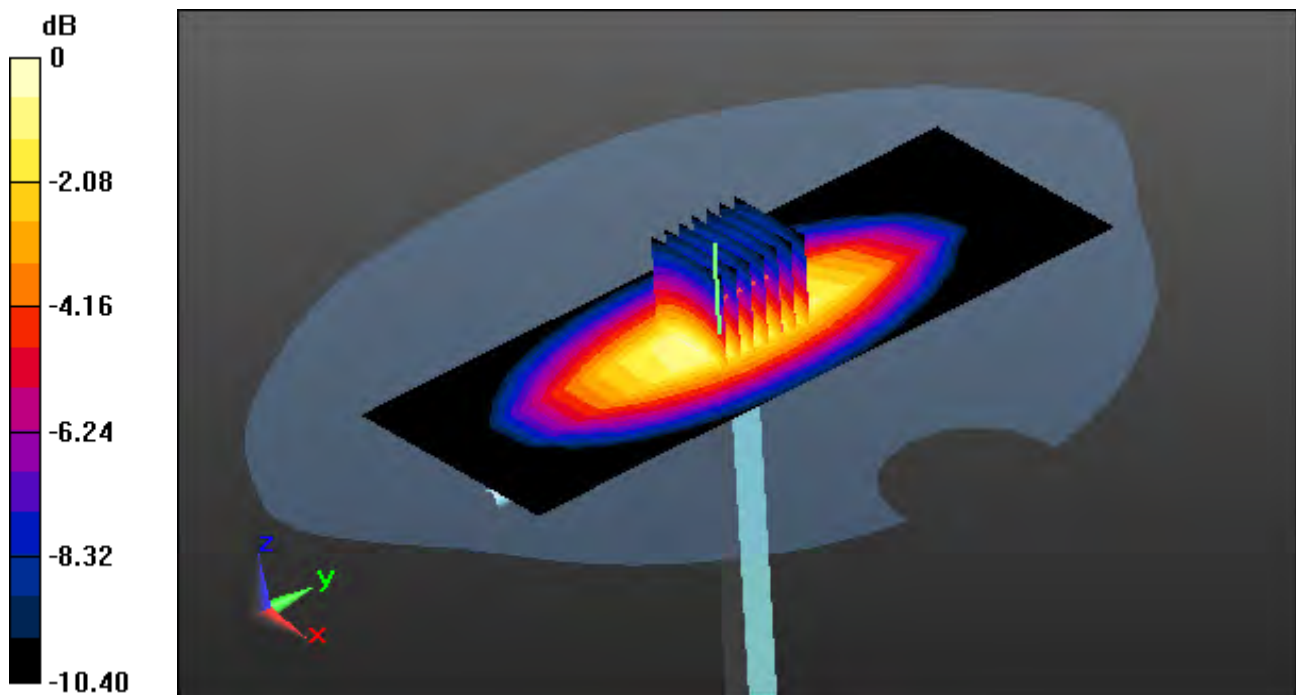
Area Scan (6x15x1): Measurement grid: dx=15mm, dy=15mm

Zoom Scan (7x7x7)/Cube 0: Measurement grid: dx=5mm, dy=5mm, dz=5mm

Power Drift = -0.08 dB

Peak SAR (extrapolated) = 3.26 W/kg

SAR(1 g) = 2.2 W/kg; SAR(10 g) = 1.45 W/kg



0 dB = 2.77 W/kg

DT&C Co., Ltd.

DUT: Dipole 750 MHz; Type: D750V3; Serial: D750V3 - SN: 1049

Communication System: UID 0, CW (0); Frequency: 750 MHz; Duty Cycle: 1:1
Medium parameters used: $f = 750$ MHz; $\sigma = 0.88$ S/m; $\epsilon_r = 41.415$; $\rho = 1000$ kg/m³
Phantom section: Flat Section

DASY5 Configuration:

Probe: EX3DV4 - SN3866; ConvF(9.85, 9.85, 9.85); Calibrated: 5/28/2019; Electronics: DAE4 Sn1394
Sensor-Surface: 2mm (Mechanical Surface Detection)

Phantom: SAM-twin middle_2013_09_24; Type: QD000P40CD; Serial: 1782
Measurement SW: DASY52, Version 52.8 (8); SEMCAD X Version 14.6.10 (7331)

Test Date: 2019-08-01; Ambient Temp: 22.1; Tissue Temp: 22.8

750 MHz System Verification (250 mW)

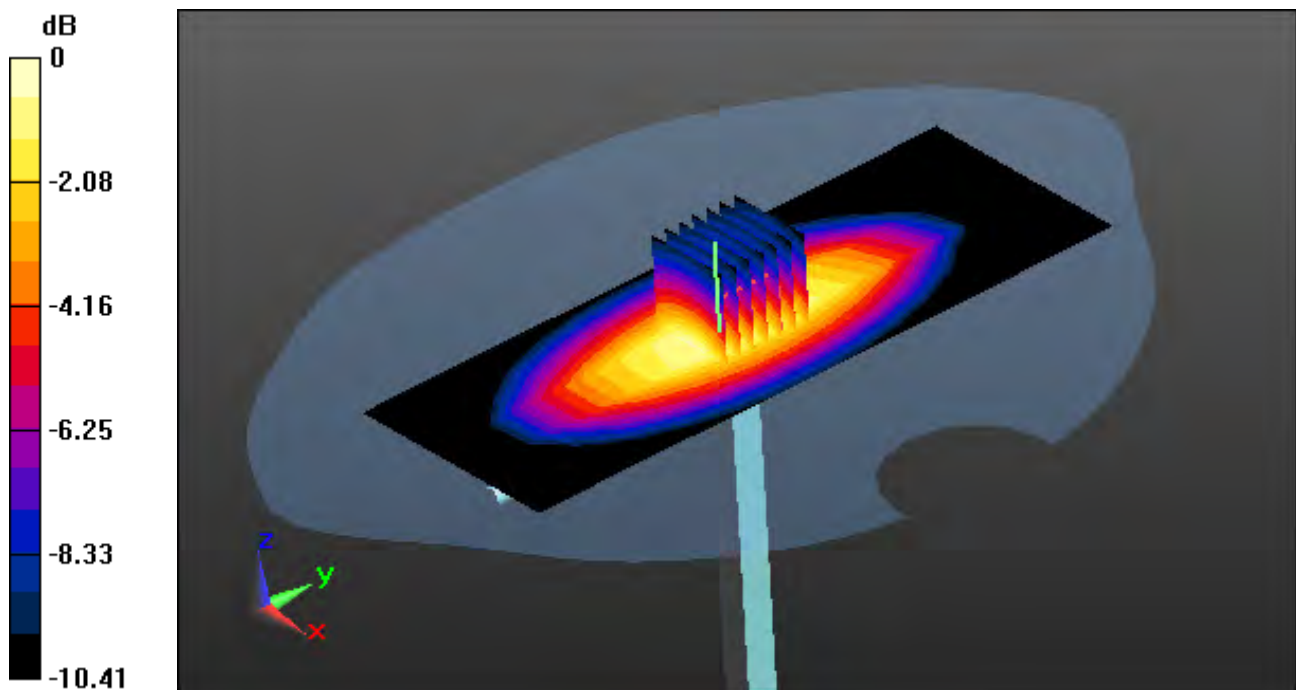
Area Scan (6x15x1): Measurement grid: dx=15mm, dy=15mm

Zoom Scan (7x7x7)/Cube 0: Measurement grid: dx=5mm, dy=5mm, dz=5mm

Power Drift = -0.02 dB

Peak SAR (extrapolated) = 3.17 W/kg

SAR(1 g) = 2.14 W/kg; SAR(10 g) = 1.41 W/kg



0 dB = 2.70 W/kg

DT&C Co., Ltd.

DUT: Dipole 750 MHz; Type: D750V3; Serial: D750V3 - SN: 1049

Communication System: UID 0, CW (0); Frequency: 750 MHz; Duty Cycle: 1:1
Medium parameters used: $f = 750$ MHz; $\sigma = 0.871$ S/m; $\epsilon_r = 40.93$; $\rho = 1000$ kg/m³
Phantom section: Flat Section

DASY5 Configuration:

Probe: EX3DV4 - SN3866; ConvF(9.85, 9.85, 9.85); Calibrated: 5/28/2019; Electronics: DAE4 Sn1394
Sensor-Surface: 2mm (Mechanical Surface Detection)

Phantom: SAM-twin middle_2013_09_24; Type: QD000P40CD; Serial: 1782
Measurement SW: DASY52, Version 52.8 (8); SEMCAD X Version 14.6.10 (7331)

Test Date: 2019-08-02; Ambient Temp: 21.7; Tissue Temp: 21.5

750 MHz System Verification (250 mW)

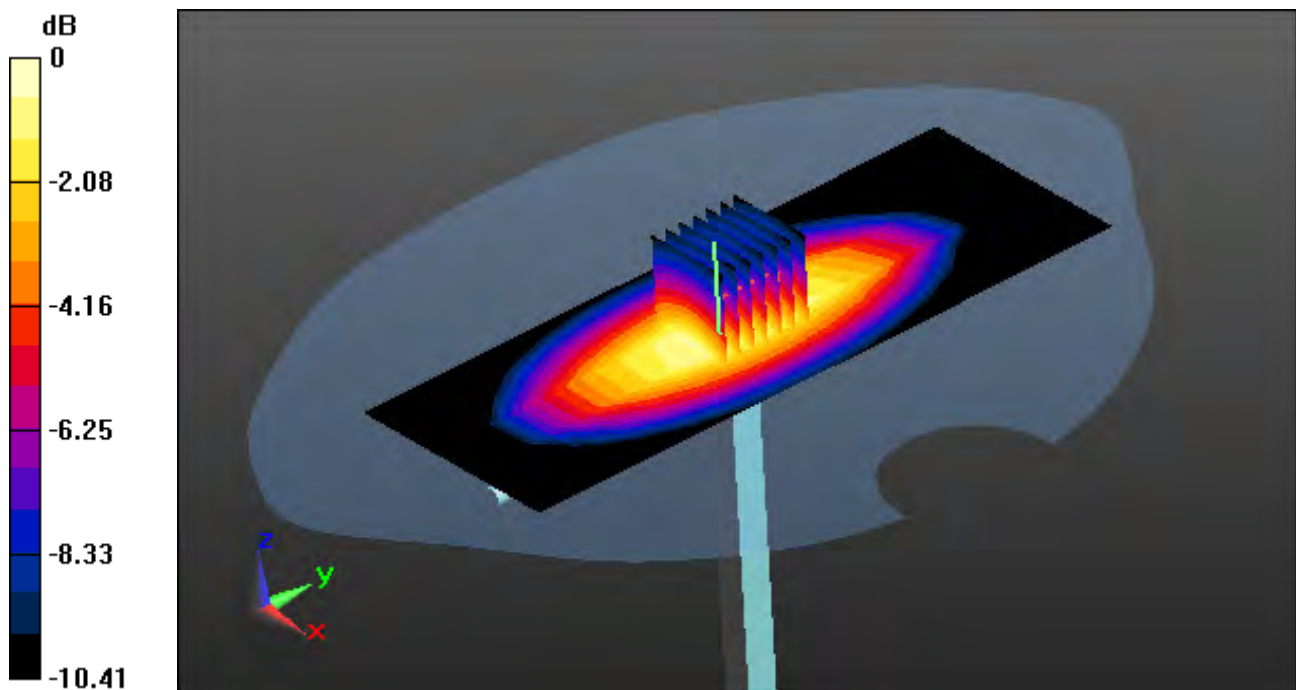
Area Scan (6x15x1): Measurement grid: dx=15mm, dy=15mm

Zoom Scan (7x7x7)/Cube 0: Measurement grid: dx=5mm, dy=5mm, dz=5mm

Power Drift = -0.05 dB

Peak SAR (extrapolated) = 3.14 W/kg

SAR(1 g) = 2.11 W/kg; SAR(10 g) = 1.39 W/kg



0 dB = 2.67 W/kg

DT&C Co., Ltd.

DUT: Dipole 835 MHz; Type: D835V2; Serial: D835V2 - SN:464

Communication System: UID 0, CW (0); Frequency: 835 MHz; Duty Cycle: 1:1
Medium parameters used: $f = 835$ MHz; $\sigma = 0.889$ S/m; $\epsilon_r = 42.804$; $\rho = 1000$ kg/m³
Phantom section: Flat Section

DASY5 Configuration:

Probe: EX3DV4 - SN3866; ConvF(9.39, 9.39, 9.39); Calibrated: 5/28/2019; Electronics: DAE4 Sn1394
Sensor-Surface: 2mm (Mechanical Surface Detection)

Phantom: SAM-twin middle_2013_09_24; Type: QD000P40CD; Serial: 1782
Measurement SW: DASY52, Version 52.8 (8); SEMCAD X Version 14.6.10 (7331)

Test Date: 2019-07-26; Ambient Temp: 22.3; Tissue Temp: 22.8

835 MHz System Verification (250 mW)

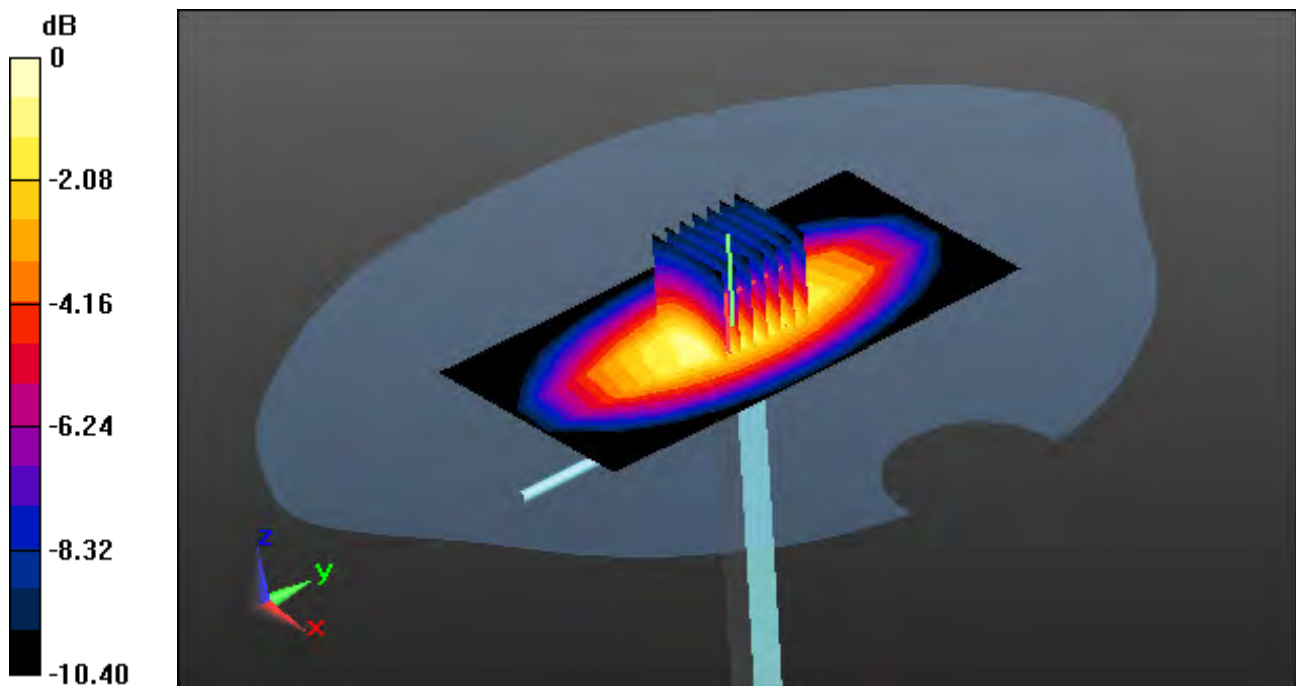
Area Scan (6x11x1): Measurement grid: dx=15mm, dy=15mm

Zoom Scan (7x7x7)/Cube 0: Measurement grid: dx=5mm, dy=5mm, dz=5mm

Power Drift = -0.07 dB

Peak SAR (extrapolated) = 3.60 W/kg

SAR(1 g) = 2.37 W/kg; SAR(10 g) = 1.55 W/kg



0 dB = 2.90 W/kg

DT&C Co., Ltd.

DUT: Dipole 835 MHz; Type: D835V2; Serial: D835V2 - SN:464

Communication System: UID 0, CW (0); Frequency: 835 MHz; Duty Cycle: 1:1
Medium parameters used: $f = 835$ MHz; $\sigma = 0.878$ S/m; $\epsilon_r = 42.359$; $\rho = 1000$ kg/m³
Phantom section: Flat Section

DASY5 Configuration:

Probe: EX3DV4 - SN3866; ConvF(9.39, 9.39, 9.39); Calibrated: 5/28/2019; Electronics: DAE4 Sn1394
Sensor-Surface: 2mm (Mechanical Surface Detection)

Phantom: SAM-twin middle_2013_09_24; Type: QD000P40CD; Serial: 1782
Measurement SW: DASY52, Version 52.8 (8); SEMCAD X Version 14.6.10 (7331)

Test Date: 2019-07-29; Ambient Temp: 22.5; Tissue Temp: 22.2

835 MHz System Verification (250 mW)

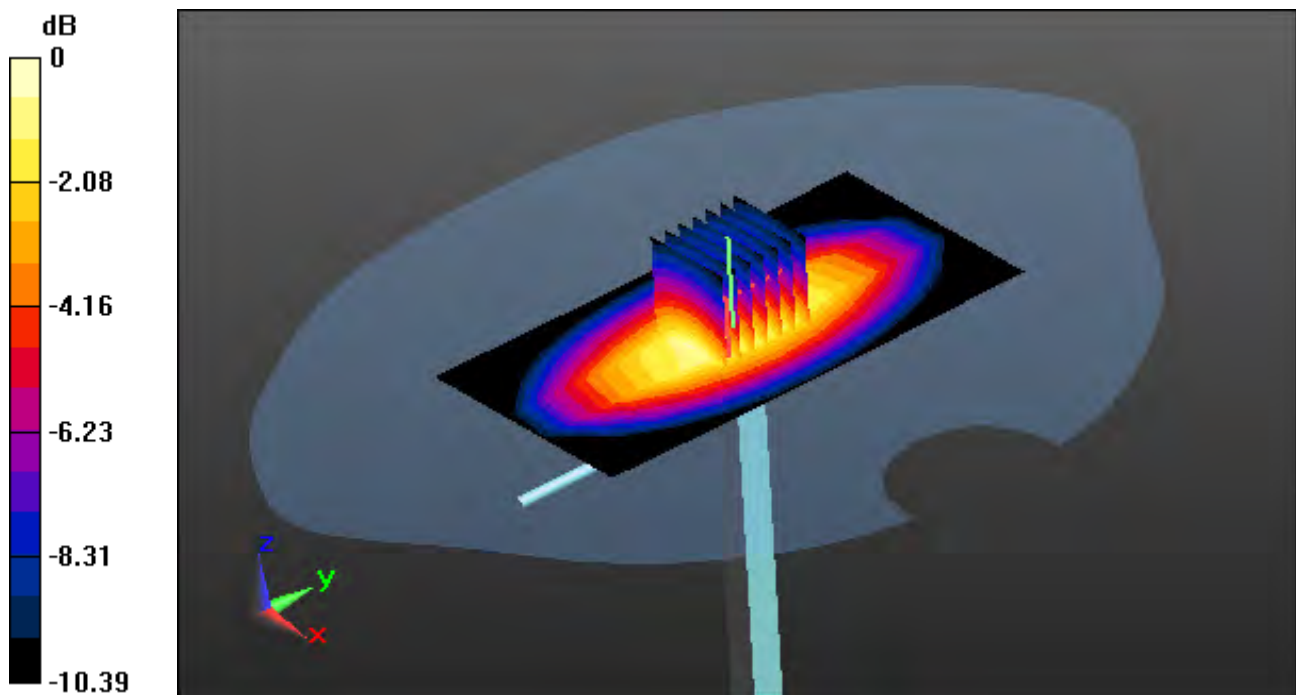
Area Scan (6x11x1): Measurement grid: dx=15mm, dy=15mm

Zoom Scan (7x7x7)/Cube 0: Measurement grid: dx=5mm, dy=5mm, dz=5mm

Power Drift = -0.02 dB

Peak SAR (extrapolated) = 3.55 W/kg

SAR(1 g) = 2.34 W/kg; SAR(10 g) = 1.53 W/kg



DT&C Co., Ltd.

DUT: Dipole 835 MHz; Type: D835V2; Serial: D835V2 - SN:464

Communication System: UID 0, CW (0); Frequency: 835 MHz; Duty Cycle: 1:1
Medium parameters used: $f = 835$ MHz; $\sigma = 0.898$ S/m; $\epsilon_r = 42.895$; $\rho = 1000$ kg/m³
Phantom section: Flat Section

DASY5 Configuration:

Probe: EX3DV4 - SN3866; ConvF(9.39, 9.39, 9.39); Calibrated: 5/28/2019; Electronics: DAE4 Sn1394
Sensor-Surface: 2mm (Mechanical Surface Detection)

Phantom: SAM-twin middle_2013_09_24; Type: QD000P40CD; Serial: 1782
Measurement SW: DASY52, Version 52.8 (8); SEMCAD X Version 14.6.10 (7331)

Test Date: 2019-07-31; Ambient Temp: 22.3; Tissue Temp: 22.0

835 MHz System Verification (250 mW)

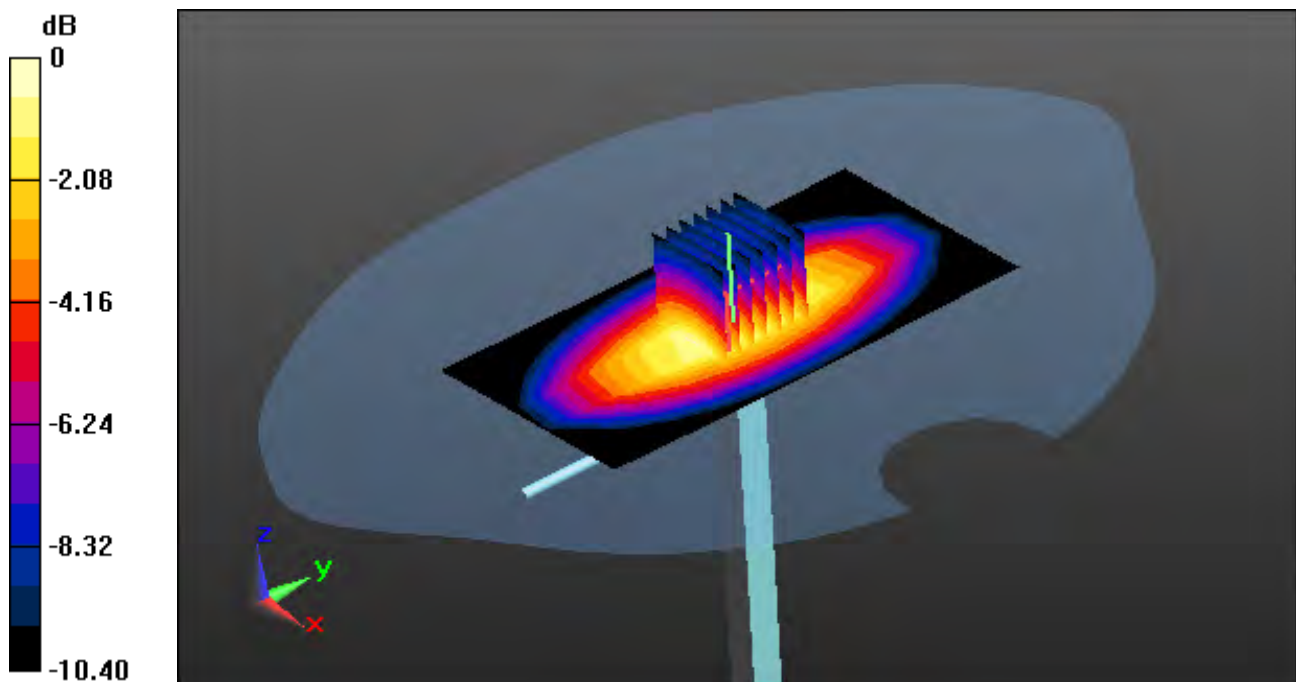
Area Scan (6x11x1): Measurement grid: dx=15mm, dy=15mm

Zoom Scan (7x7x7)/Cube 0: Measurement grid: dx=5mm, dy=5mm, dz=5mm

Power Drift = 0.04 dB

Peak SAR (extrapolated) = 3.64 W/kg

SAR(1 g) = 2.4 W/kg; SAR(10 g) = 1.57 W/kg



DT&C Co., Ltd.

DUT: Dipole 1800 MHz; Type: D1800V2; Serial: D1800V2 - SN2d047

Communication System: UID 0, CW (0); Frequency: 1800 MHz; Duty Cycle: 1:1
Medium parameters used: $f = 1800$ MHz; $\sigma = 1.372$ S/m; $\epsilon_r = 40.749$; $\rho = 1000$ kg/m³
Phantom section: Flat Section

DASY5 Configuration:

Probe: EX3DV4 - SN7337; ConvF(8.96, 8.96, 8.96) @ 1800 MHz; Calibrated: 2018-11-22
Electronics: DAE4 Sn1453

Sensor-Surface: 2mm (Mechanical Surface Detection)

Phantom: SAM_Right_20170922; Type: QD000P40CD; Serial: 1895

Measurement SW: DASY52, Version 52.10 (2); SEMCAD X Version 14.6.12 (7450)

Test Date: 2019-08-12; Ambient Temp: 20.9; Tissue Temp: 20.8

1800 MHz System Verification (100 mW)

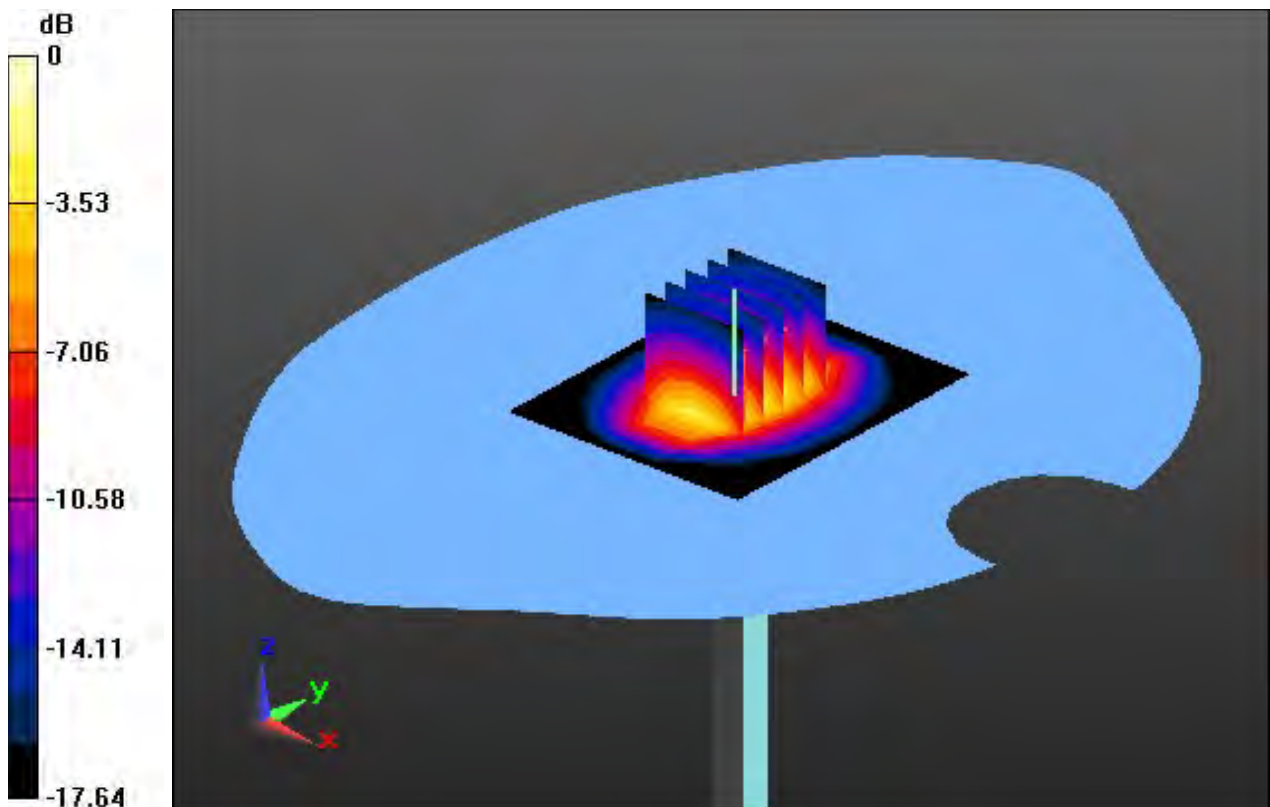
Area Scan (6x7x1): Measurement grid: dx=15mm, dy=15mm

Zoom Scan (5x5x7)/Cube 0: Measurement grid: dx=8mm, dy=8mm, dz=5mm

Power Drift = -0.10 dB

Peak SAR (extrapolated) = 6.42 W/kg

SAR(1 g) = 3.51 W/kg; SAR(10 g) = 1.85 W/kg



0 dB = 5.06 W/kg

DT&C Co., Ltd.

DUT: Dipole 1900 MHz; Type: D1900V2; Serial: D1900V2 - SN:5d176

Communication System: UID 0, CW (0); Frequency: 1900 MHz; Duty Cycle: 1:1
Medium parameters used: $f = 1900$ MHz; $\sigma = 1.401$ S/m; $\epsilon_r = 39.956$; $\rho = 1000$ kg/m³
Phantom section: Flat Section

DASY5 Configuration:

Probe: EX3DV4 - SN7337; ConvF(8.49, 8.49, 8.49) @ 1900 MHz; Calibrated: 2018-11-22
Electronics: DAE4 Sn1453

Sensor-Surface: 2mm (Mechanical Surface Detection)

Phantom: SAM_Right 20170922; Type: QD000P40CD; Serial: 1895

Measurement SW: DASY52, Version 52.10 (2); SEMCAD X Version 14.6.12 (7450)

Test Date: 2019-07-15; Ambient Temp: 21.6; Tissue Temp: 21.5

1900 MHz System Verification (100 mW)

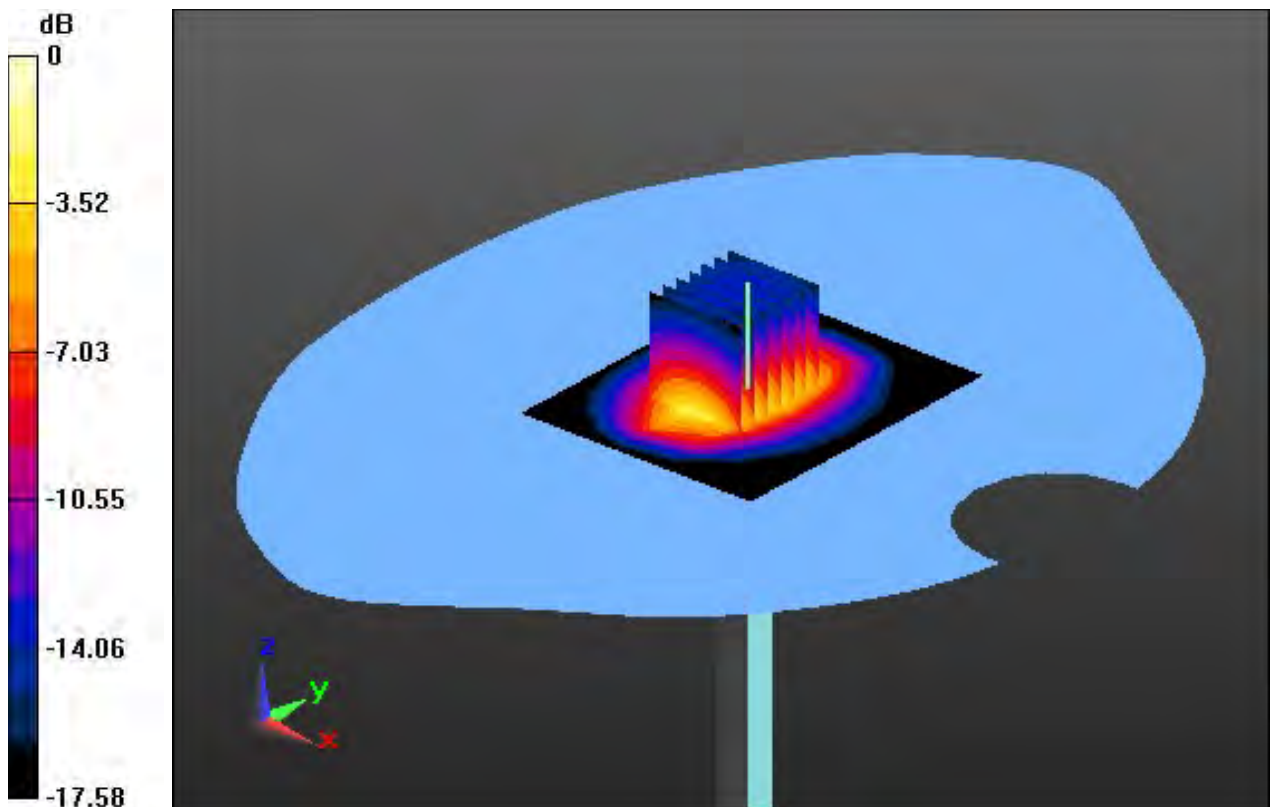
Area Scan (6x7x1): Measurement grid: dx=15mm, dy=15mm

Zoom Scan (7x7x7)/Cube 0: Measurement grid: dx=5mm, dy=5mm, dz=5mm

Power Drift = -0.16 dB

Peak SAR (extrapolated) = 7.33 W/kg

SAR(1 g) = 3.96 W/kg; SAR(10 g) = 2.08 W/kg



0 dB = 5.66 W/kg

DT&C Co., Ltd.

DUT: Dipole 1900 MHz; Type: D1900V2; Serial: D1900V2 - SN:5d176

Communication System: UID 0, CW (0); Frequency: 1900 MHz; Duty Cycle: 1:1
Medium parameters used: $f = 1900$ MHz; $\sigma = 1.416$ S/m; $\epsilon_r = 39.265$; $\rho = 1000$ kg/m³
Phantom section: Flat Section

DASY5 Configuration:

Probe: EX3DV4 - SN7337; ConvF(8.49, 8.49, 8.49) @ 1900 MHz; Calibrated: 2018-11-22
Electronics: DAE4 Sn1453

Sensor-Surface: 2mm (Mechanical Surface Detection)

Phantom: SAM_Right_20170922; Type: QD000P40CD; Serial: 1895

Measurement SW: DASY52, Version 52.10 (2); SEMCAD X Version 14.6.12 (7450)

Test Date: 2019-07-17; Ambient Temp: 21.3; Tissue Temp: 21.2

1900 MHz System Verification (100 mW)

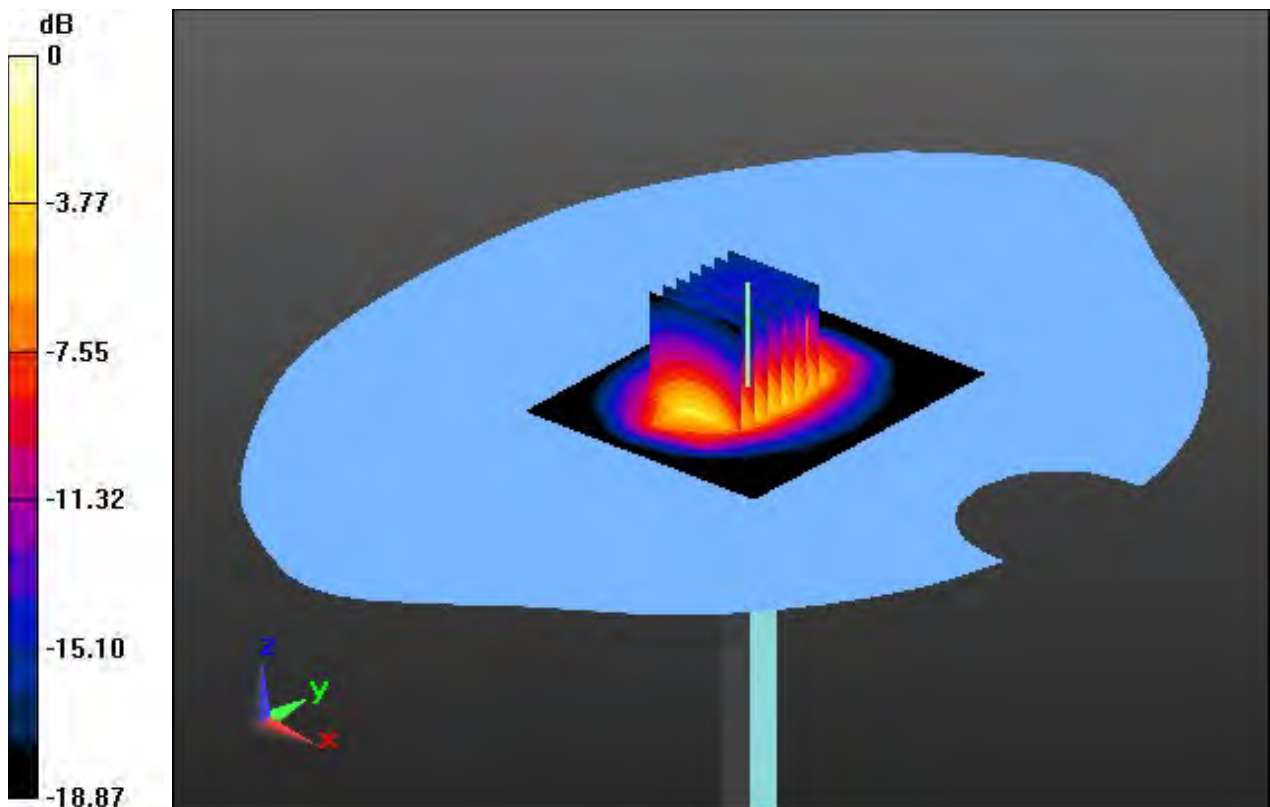
Area Scan (6x7x1): Measurement grid: $dx=15$ mm, $dy=15$ mm

Zoom Scan (7x7x7)/Cube 0: Measurement grid: $dx=5$ mm, $dy=5$ mm, $dz=5$ mm

Power Drift = 0.00 dB

Peak SAR (extrapolated) = 7.63 W/kg

SAR(1 g) = 4.03 W/kg; SAR(10 g) = 2.07 W/kg



0 dB = 5.88 W/kg

DT&C Co., Ltd.

DUT: Dipole 2450 MHz; Type: D2450V2; Serial:D2450V2 - SN:920

Communication System: UID 0, CW (0); Frequency: 2450 MHz; Duty Cycle: 1:1
Medium parameters used: $f = 2450$ MHz; $\sigma = 1.812$ S/m; $\epsilon_r = 38.404$; $\rho = 1000$ kg/m³
Phantom section: Flat Section

DASY5 Configuration:

Probe: EX3DV4 - SN3916; ConvF(7.66, 7.66, 7.66); Calibrated: 4/25/2019; Electronics: DAE4 Sn1392
Sensor-Surface: 2mm (Mechanical Surface Detection)
Phantom: SAM with CRP_2013_10_08_right; Type: QD000P40CD; Serial: TP:1785
Measurement SW: DASY52, Version 52.8 (8); SEMCAD X Version 14.6.10 (7331)

Test Date: 2019-08-14; Ambient Temp: 20.4; Tissue Temp: 20.5

2450 MHz System Verification (100 mW)

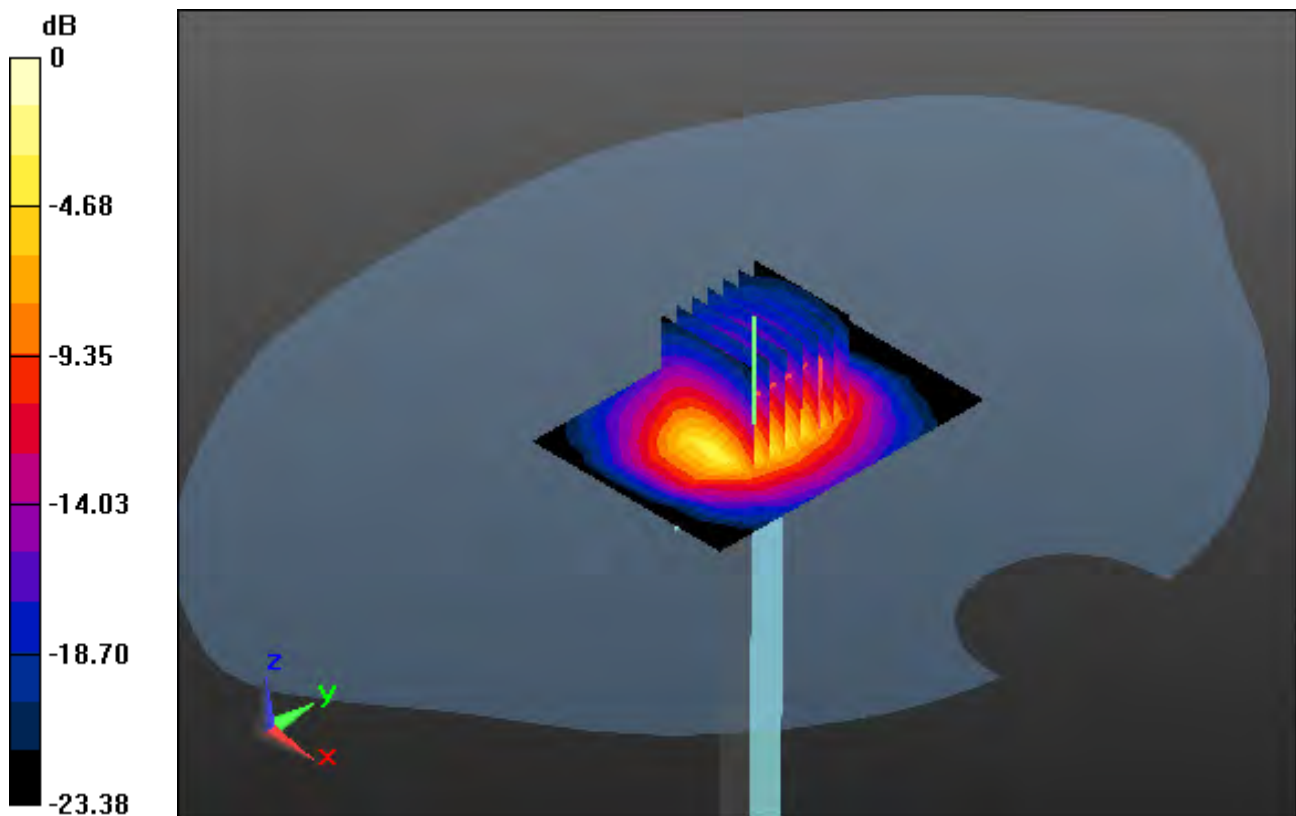
Area Scan (6x8x1): Measurement grid: dx=12mm, dy=12mm

Zoom Scan (7x7x7)/Cube 0: Measurement grid: dx=5mm, dy=5mm, dz=5mm

Power Drift = -0.01 dB

Peak SAR (extrapolated) = 18.7 W/kg

SAR(1 g) = 5.38 W/kg; SAR(10 g) = 2.42 W/kg



0 dB = 9.17 W/kg

DT&C Co., Ltd.

DUT: Dipole 2450 MHz; Type: D2450V2; Serial: D2450V2 - SN:920

Communication System: UID 0, CW; Frequency: 2450 MHz; Duty Cycle: 1:1
Medium parameters used: $f = 2450$ MHz; $\sigma = 1.811$ S/m; $\epsilon_r = 38.366$; $\rho = 1000$ kg/m³
Phantom section: Flat Section

DASY5 Configuration:

Probe: EX3DV4 - SN3916; ConvF(7.66, 7.66, 7.66); Calibrated: 4/25/2019; Electronics: DAE4 Sn1392
Sensor-Surface: 2mm (Mechanical Surface Detection)
Phantom: SAM with CRP_2013_10_08_right; Type: QD000P40CD; Serial: TP:1785
Measurement SW: DASY52, Version 52.8 (8); SEMCAD X Version 14.6.10 (7331)

Test Date: 2019-08-13; Ambient Temp: 20.4; Tissue Temp: 20.6

2450 MHz System Verification (100 mW)

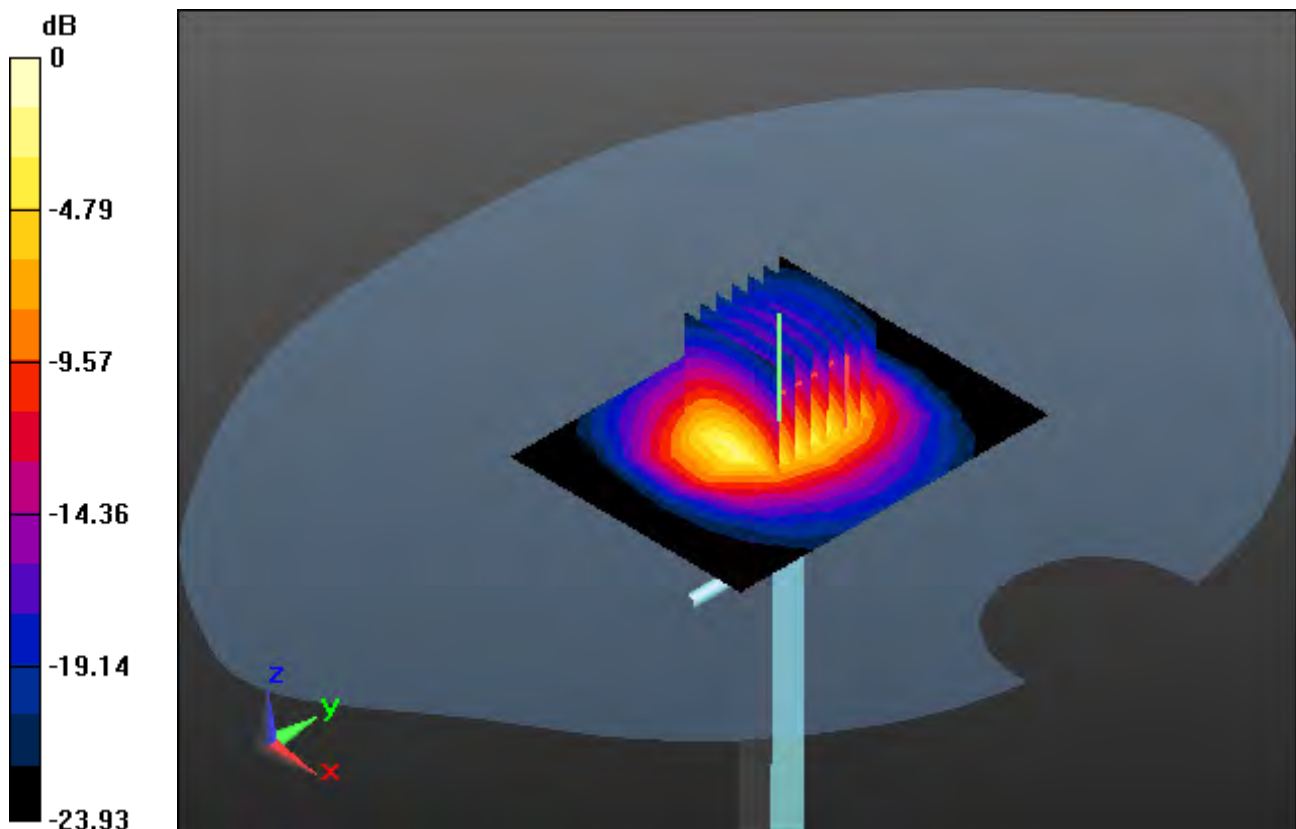
Area Scan (7x9x1): Measurement grid: dx=12mm, dy=12mm

Zoom Scan (7x7x7)/Cube 0: Measurement grid: dx=5mm, dy=5mm, dz=5mm

Power Drift = -0.09 dB

Peak SAR (extrapolated) = 12.8 W/kg

SAR(1 g) = 5.42 W/kg; SAR(10 g) = 2.62 W/kg



0 dB = 8.94 W/kg

DT&C Co., Ltd.

DUT: Dipole 2600 MHz; Type: D2600V2; Serial: D2600V2 - SN:1016

Communication System: UID 0, CW (0); Frequency: 2600 MHz; Duty Cycle: 1:1
Medium parameters used: $f = 2600$ MHz; $\sigma = 1.961$ S/m; $\epsilon_r = 40.012$; $\rho = 1000$ kg/m³
Phantom section: Flat Section

DASY5 Configuration:

Probe: EX3DV4 - SN7337; ConvF(7.43, 7.43, 7.43) @ 2600 MHz; Calibrated: 2018-11-22
Electronics: DAE4 Sn1453

Sensor-Surface: 2mm (Mechanical Surface Detection)

Phantom: SAM_Right_20170922; Type: QD000P40CD; Serial: 1895

Measurement SW: DASY52, Version 52.10 (2); SEMCAD X Version 14.6.12 (7450)

Test Date: 2019-07-09; Ambient Temp: 21.4; Tissue Temp: 21.2

2600 MHz System Verification (100 mW)

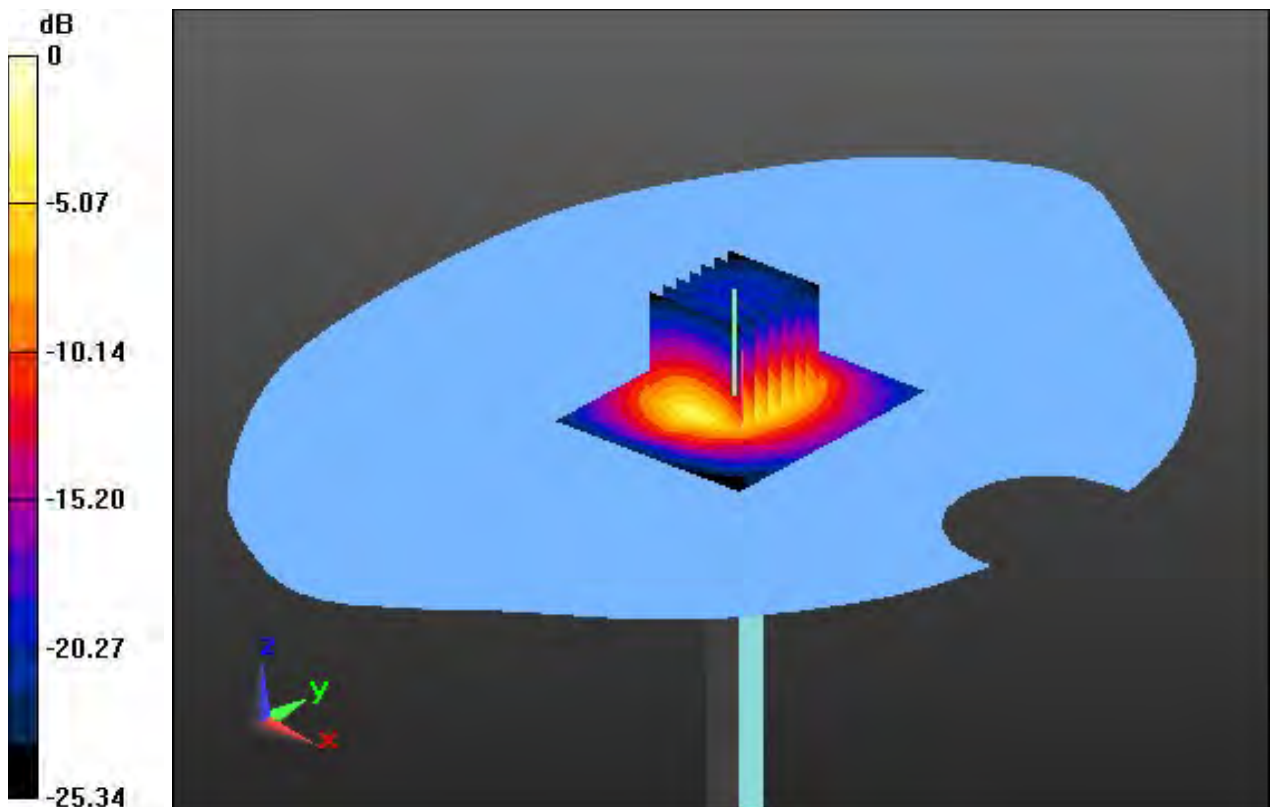
Area Scan (6x7x1): Measurement grid: dx=12mm, dy=12mm

Zoom Scan (7x7x7)/Cube 0: Measurement grid: dx=5mm, dy=5mm, dz=5mm

Power Drift = 0.00 dB

Peak SAR (extrapolated) = 13.7 W/kg

SAR(1 g) = 6.08 W/kg; SAR(10 g) = 2.68 W/kg



0 dB = 9.60 W/kg

DT&C Co., Ltd.

DUT: Dipole 2600 MHz; Type: D2600V2; Serial: D2600V2 - SN:1016

Communication System: UID 0, CW (0); Frequency: 2600 MHz; Duty Cycle: 1:1
Medium parameters used: $f = 2600$ MHz; $\sigma = 1.973$ S/m; $\epsilon_r = 37.663$; $\rho = 1000$ kg/m³
Phantom section: Flat Section

DASY5 Configuration:

Probe: EX3DV4 - SN7337; ConvF(7.43, 7.43, 7.43) @ 2600 MHz; Calibrated: 2018-11-22
Electronics: DAE4 Sn1392

Sensor-Surface: 2mm (Mechanical Surface Detection)

Phantom: SAM_Right_20170922; Type: QD000P40CD; Serial: 1895

Measurement SW: DASY52, Version 52.10 (2); SEMCAD X Version 14.6.12 (7450)

Test Date: 2019-07-23; Ambient Temp: 20.7; Tissue Temp: 20.6

2600 MHz System Verification (100 mW)

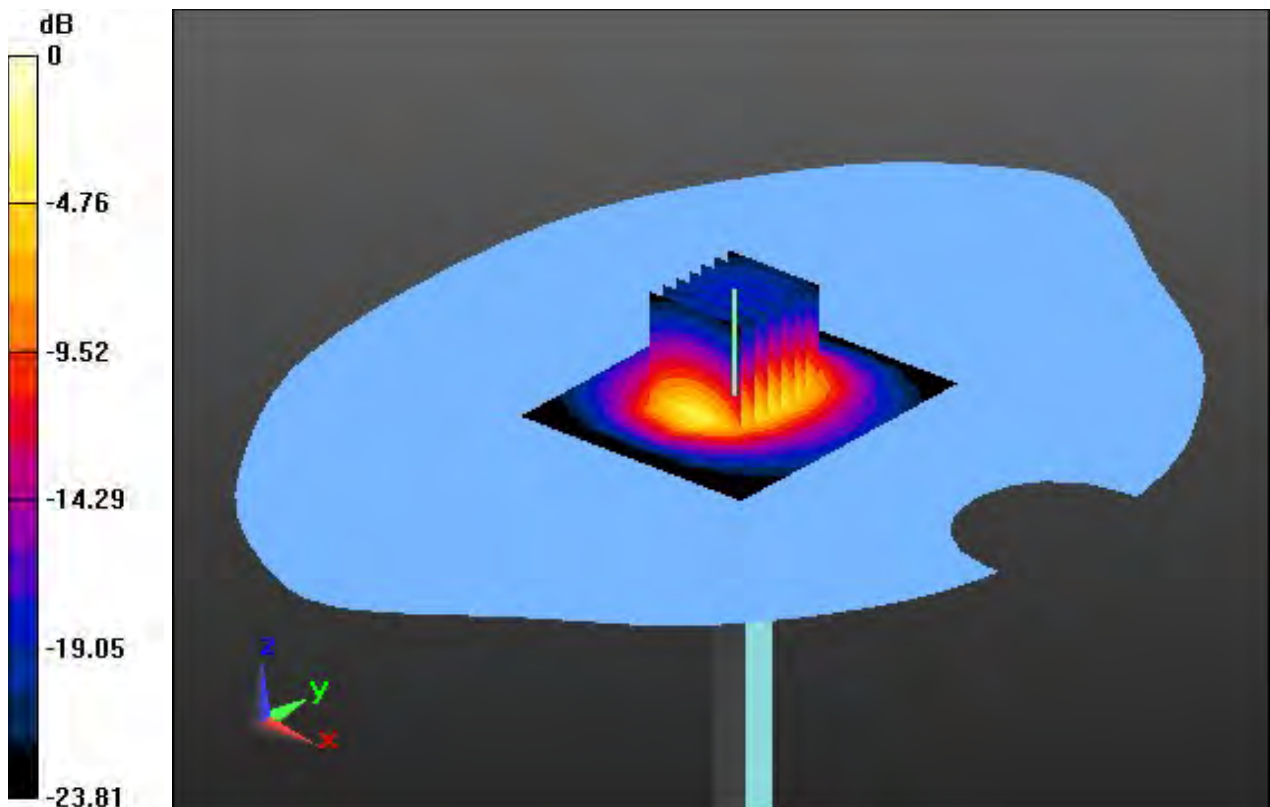
Area Scan (7x8x1): Measurement grid: dx=12mm, dy=12mm

Zoom Scan (7x7x7)/Cube 0: Measurement grid: dx=5mm, dy=5mm, dz=5mm

Power Drift = 0.07 dB

Peak SAR (extrapolated) = 12.7 W/kg

SAR(1 g) = 5.9 W/kg; SAR(10 g) = 2.68 W/kg



0 dB = 9.24 W/kg

DT&C Co., Ltd.

DUT: Dipole 2600 MHz; Type: D2600V2; Serial: D2600V2 - SN:1016

Communication System: UID 0, CW (0); Frequency: 2600 MHz; Duty Cycle: 1:1
Medium parameters used: $f = 2600$ MHz; $\sigma = 2.026$ S/m; $\epsilon_r = 39.278$; $\rho = 1000$ kg/m³
Phantom section: Flat Section

DASY5 Configuration:

Probe: EX3DV4 - SN7337; ConvF(7.43, 7.43, 7.43) @ 2600 MHz; Calibrated: 2018-11-22
Electronics: DAE4 Sn1453

Sensor-Surface: 2mm (Mechanical Surface Detection)

Phantom: SAM_Right_20170922; Type: QD000P40CD; Serial: 1895

Measurement SW: DASY52, Version 52.10 (2); SEMCAD X Version 14.6.12 (7450)

Test Date: 2019-08-27; Ambient Temp: 21.7; Tissue Temp: 21.6

2600 MHz System Verification (100 mW)

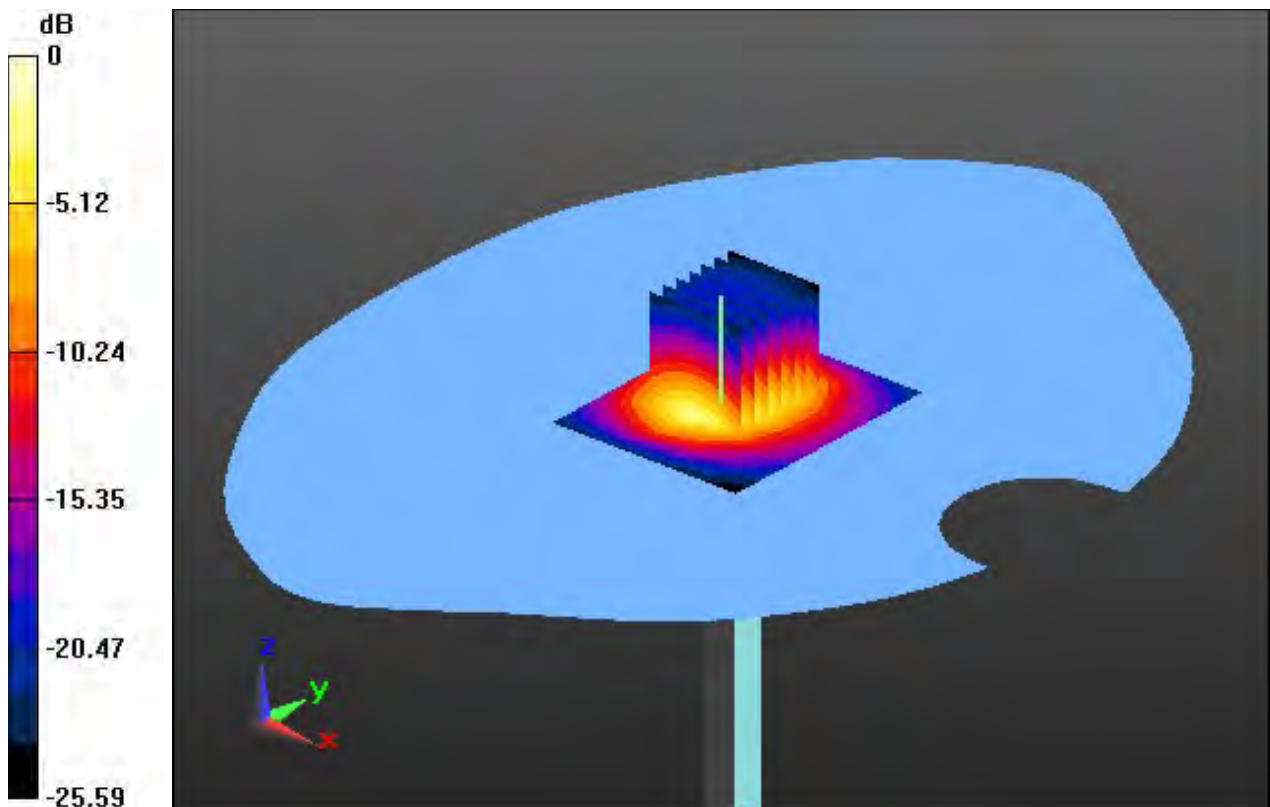
Area Scan (6x7x1): Measurement grid: dx=12mm, dy=12mm

Zoom Scan (7x7x7)/Cube 0: Measurement grid: dx=5mm, dy=5mm, dz=5mm

Power Drift = 0.08 dB

Peak SAR (extrapolated) = 13.3 W/kg

SAR(1 g) = 5.94 W/kg; SAR(10 g) = 2.65 W/kg



0 dB = 9.14 W/kg

DT&C Co., Ltd.

DUT: Dipole 5000 MHz; Type: D5GHzV2; Serial: D5GHzV2 - SN:1103

Communication System: UID 0, CW (0); Frequency: 5200 MHz; Duty Cycle: 1:1
Medium parameters used: $f = 5200$ MHz; $\sigma = 4.558$ S/m; $\epsilon_r = 37.071$; $\rho = 1000$ kg/m³
Phantom section: Flat Section

DASY5 Configuration:

Probe: EX3DV4 - SN3916; ConvF(5.14, 5.14, 5.14); Calibrated: 4/25/2019; Electronics: DAE4 Sn1392
Sensor-Surface: 1.4mm (Mechanical Surface Detection)
Phantom: SAM with CRP_2016_07_22_middle; Type: QD000P40CD; Serial: TP:1786
Measurement SW: DASY52, Version 52.8 (8); SEMCAD X Version 14.6.10 (7331)

Test Date: 2019-08-15; Ambient Temp: 22.0; Tissue Temp: 21.9

5200 MHz System Verification (100 mW)

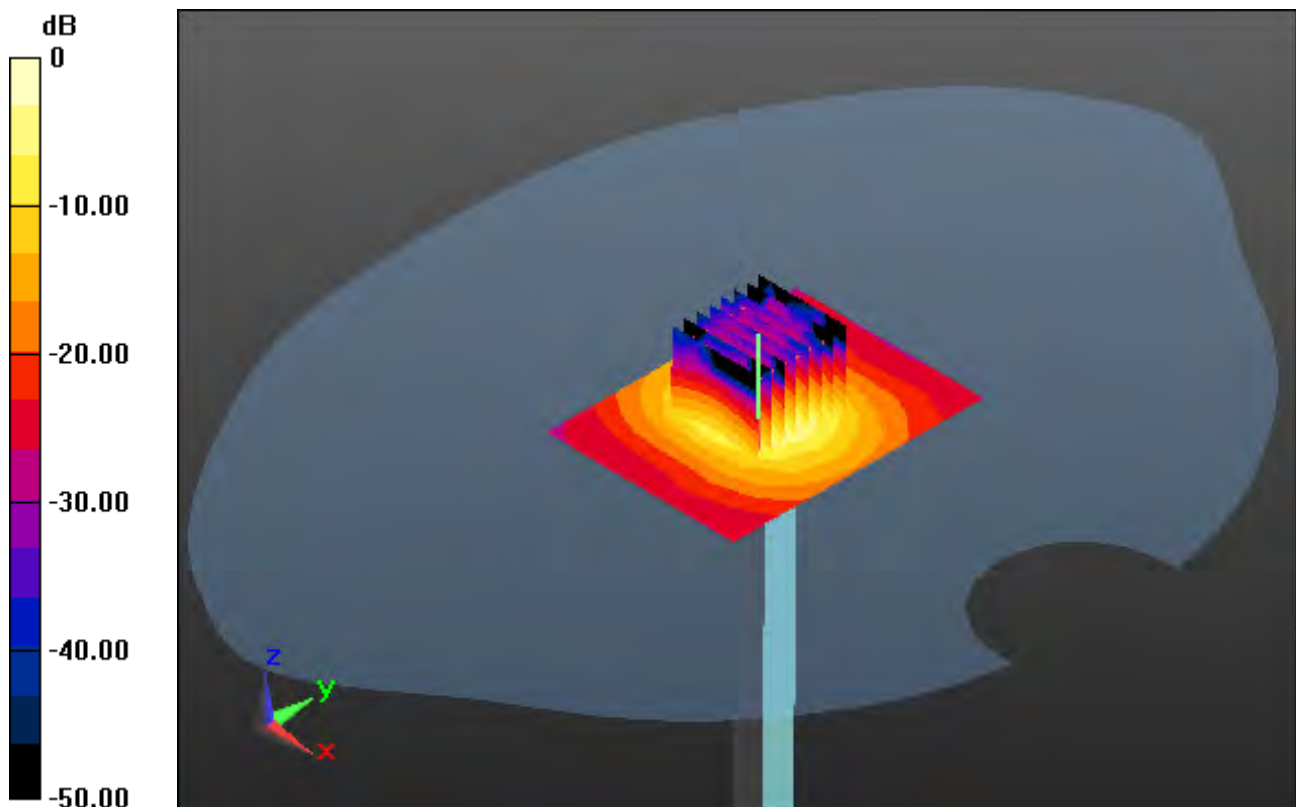
Area Scan (7x9x1): Measurement grid: dx=10mm, dy=10mm

Zoom Scan (8x8x7)/Cube 0: Measurement grid: dx=4mm, dy=4mm, dz=1.4mm, Graded Ratio:1.4

Power Drift = 0.06 dB

Peak SAR (extrapolated) = 32.8 W/kg

SAR(1 g) = 8.13 W/kg; SAR(10 g) = 2.34 W/kg



0 dB = 17.3 W/kg

DT&C Co., Ltd.

DUT: Dipole 5000 MHz; Type: D5GHzV2; Serial: D5GHzV2 - SN:1103

Communication System: UID 0, CW (0); Frequency: 5300 MHz; Duty Cycle: 1:1
Medium parameters used: $f = 5300$ MHz; $\sigma = 4.588$ S/m; $\epsilon_r = 35.577$; $\rho = 1000$ kg/m³
Phantom section: Flat Section

DASY5 Configuration:

Probe: EX3DV4 - SN3916; ConvF(4.94, 4.94, 4.94); Calibrated: 4/25/2019; Electronics: DAE4 Sn1392
Sensor-Surface: 1.4mm (Mechanical Surface Detection)
Phantom: SAM with CRP_2016_07_22_middle; Type: QD000P40CD; Serial: TP:1786
Measurement SW: DASY52, Version 52.8 (8); SEMCAD X Version 14.6.10 (7331)

Test Date: 2019-08-16; Ambient Temp: 21.2; Tissue Temp: 21.4

5300 MHz System Verification (100 mW)

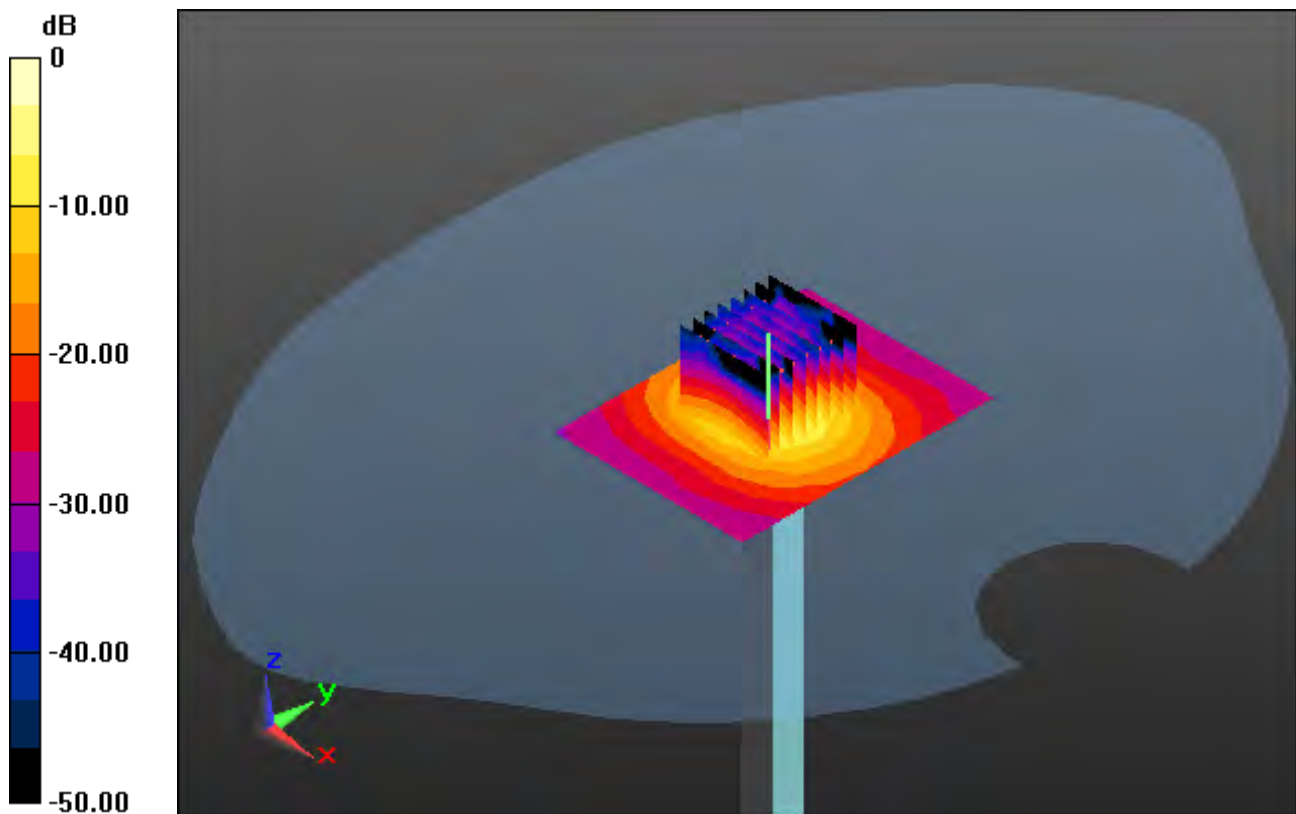
Area Scan (7x9x1): Measurement grid: dx=10mm, dy=10mm

Zoom Scan (8x8x7)/Cube 0: Measurement grid: dx=4mm, dy=4mm, dz=1.4mm, Graded Ratio:1.4

Power Drift = 0.02 dB

Peak SAR (extrapolated) = 37.9 W/kg

SAR(1 g) = 7.98 W/kg; SAR(10 g) = 2.31 W/kg



0 dB = 21.6 W/kg

DT&C Co., Ltd.

DUT: Dipole 5000 MHz; Type: D5GHzV2; Serial: D5GHzV2 - SN:1103

Communication System: UID 0, CW (0); Frequency: 5500 MHz; Duty Cycle: 1:1
Medium parameters used: $f = 5500$ MHz; $\sigma = 4.988$ S/m; $\epsilon_r = 34.671$; $\rho = 1000$ kg/m³
Phantom section: Flat Section

DASY5 Configuration:

Probe: EX3DV4 - SN3933; ConvF(4.87, 4.87, 4.87); Calibrated: 9/25/2018; Electronics: DAE4 Sn1391
Sensor-Surface: 1.4mm (Mechanical Surface Detection)
Phantom: SAM with CRP v5.0(Right); Type: QD000P40CD; Serial: 1220
Measurement SW: DASY52, Version 52.8 (8); SEMCAD X Version 14.6.10 (7331)

Test Date: 2019-08-14; Ambient Temp: 22.1; Tissue Temp: 22.3

5500 MHz System Verification (100 mW)

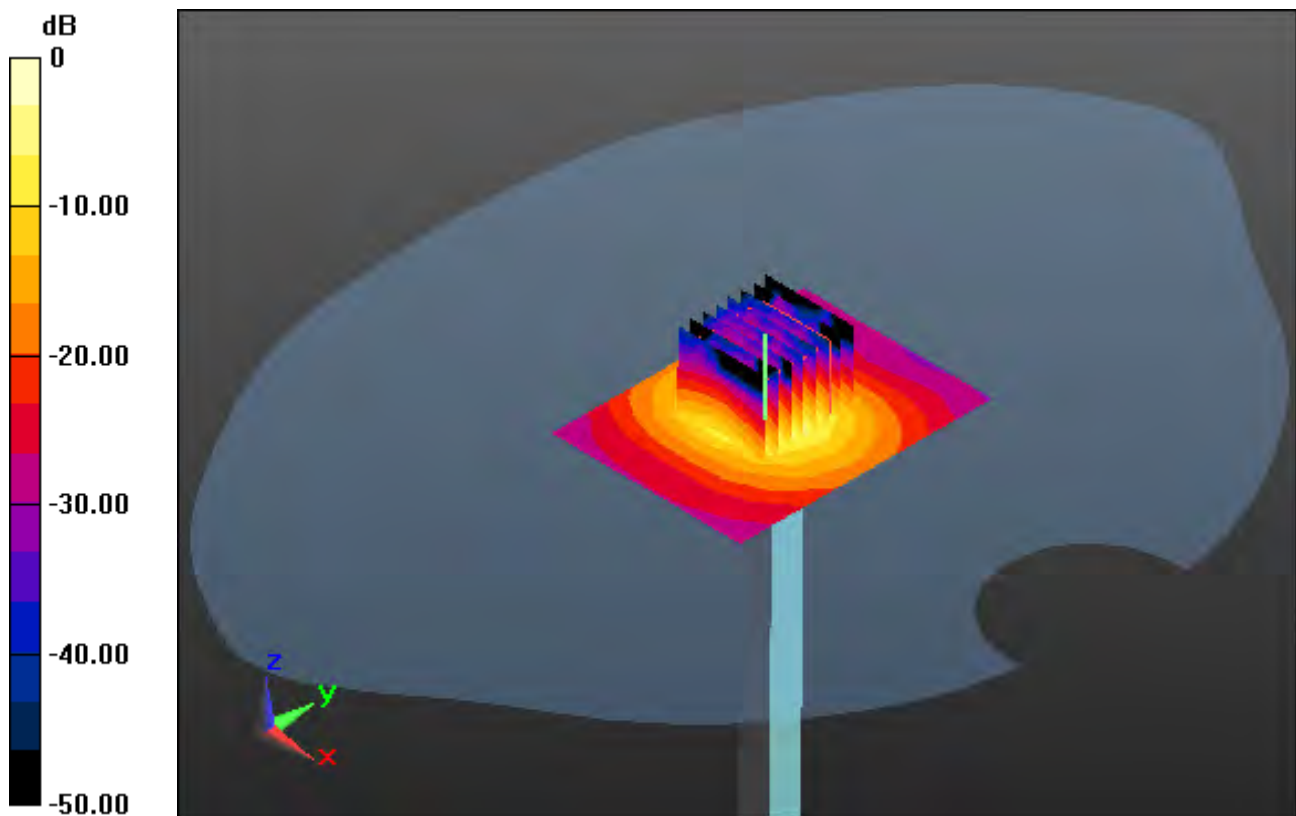
Area Scan (7x9x1): Measurement grid: dx=10mm, dy=10mm

Zoom Scan (8x8x7)/Cube 0: Measurement grid: dx=4mm, dy=4mm, dz=1.4mm, Graded Ratio:1.4

Power Drift = -0.08 dB

Peak SAR (extrapolated) = 42.2 W/kg

SAR(1 g) = 8.92 W/kg; SAR(10 g) = 2.57 W/kg



0 dB = 25.3 W/kg

DT&C Co., Ltd.

DUT: Dipole 5000 MHz; Type: D5GHzV2; Serial: D5GHzV2 - SN:1103

Communication System: UID 0, CW (0); Frequency: 5600 MHz; Duty Cycle: 1:1
Medium parameters used: $f = 5600$ MHz; $\sigma = 5.105$ S/m; $\epsilon_r = 34.516$; $\rho = 1000$ kg/m³
Phantom section: Flat Section

DASY5 Configuration:

Probe: EX3DV4 - SN3933; ConvF(4.71, 4.71, 4.71); Calibrated: 9/25/2018; Electronics: DAE4 Sn1391
Sensor-Surface: 1.4mm (Mechanical Surface Detection)
Phantom: SAM with CRP v5.0(Right); Type: QD000P40CD; Serial: 1220
Measurement SW: DASY52, Version 52.8 (8); SEMCAD X Version 14.6.10 (7331)

Test Date: 2019-08-14; Ambient Temp: 22.1; Tissue Temp: 22.3

5600 MHz System Verification (100 mW)

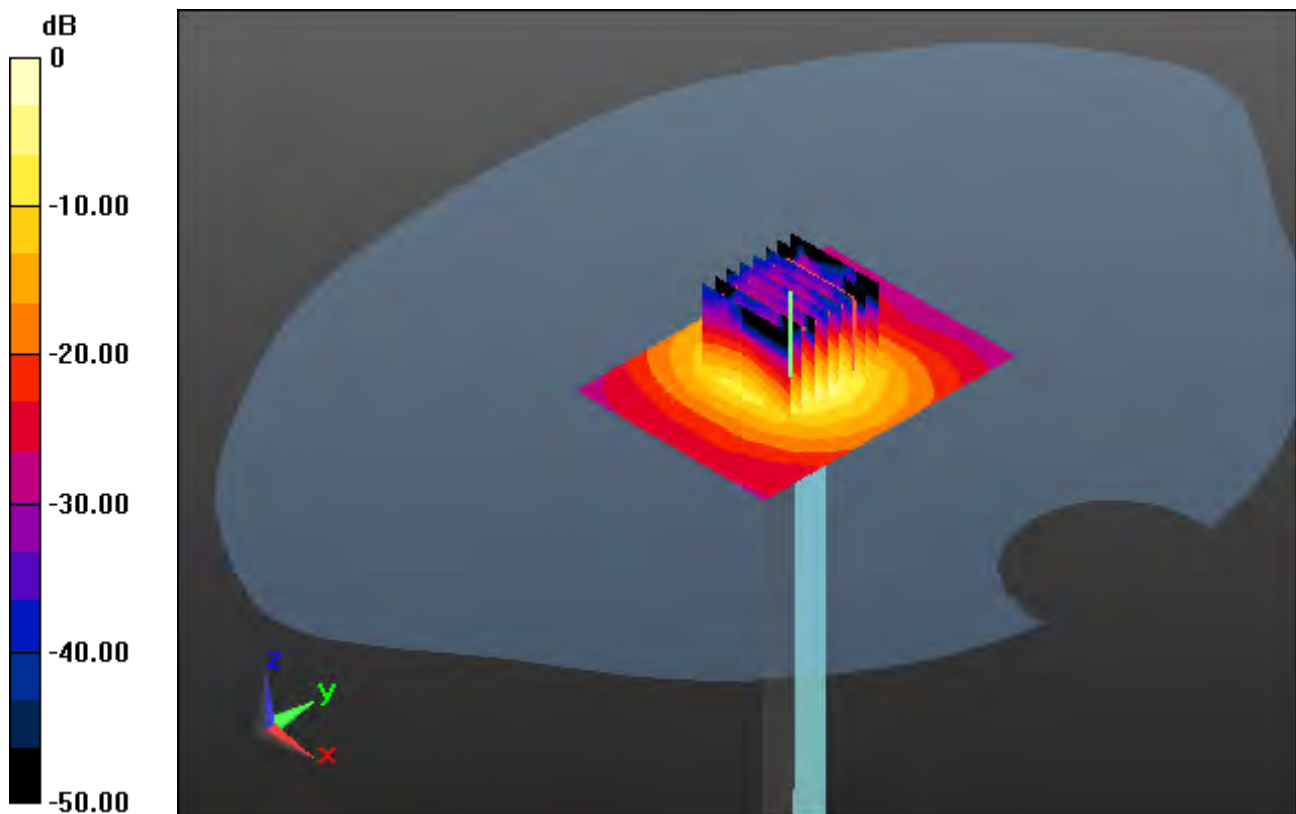
Area Scan (7x9x1): Measurement grid: dx=10mm, dy=10mm

Zoom Scan (8x8x7)/Cube 0: Measurement grid: dx=4mm, dy=4mm, dz=1.4mm, Graded Ratio:1.4

Power Drift = 0.05 dB

Peak SAR (extrapolated) = 43.9 W/kg

SAR(1 g) = 8.81 W/kg; SAR(10 g) = 2.52 W/kg



0 dB = 19.4 W/kg

DT&C Co., Ltd.

DUT: Dipole 5000 MHz; Type: D5GHzV2; Serial: D5GHzV2 - SN:1103

Communication System: UID 0, CW (0); Frequency: 5800 MHz; Duty Cycle: 1:1
Medium parameters used: $f = 5800$ MHz; $\sigma = 5.383$ S/m; $\epsilon_r = 35.68$; $\rho = 1000$ kg/m³
Phantom section: Flat Section

DASY5 Configuration:

Probe: EX3DV4 - SN3933; ConvF(4.77, 4.77, 4.77); Calibrated: 9/25/2018; Electronics: DAE4 Sn1391
Sensor-Surface: 1.4mm (Mechanical Surface Detection)
Phantom: SAM with CRP v5.0(Right); Type: QD000P40CD; Serial: 1220
Measurement SW: DASY52, Version 52.8 (8); SEMCAD X Version 14.6.10 (7331)

Test Date: 2019-08-16; Ambient Temp: 21.8; Tissue Temp: 21.9

5800 MHz System Verification (100 mW)

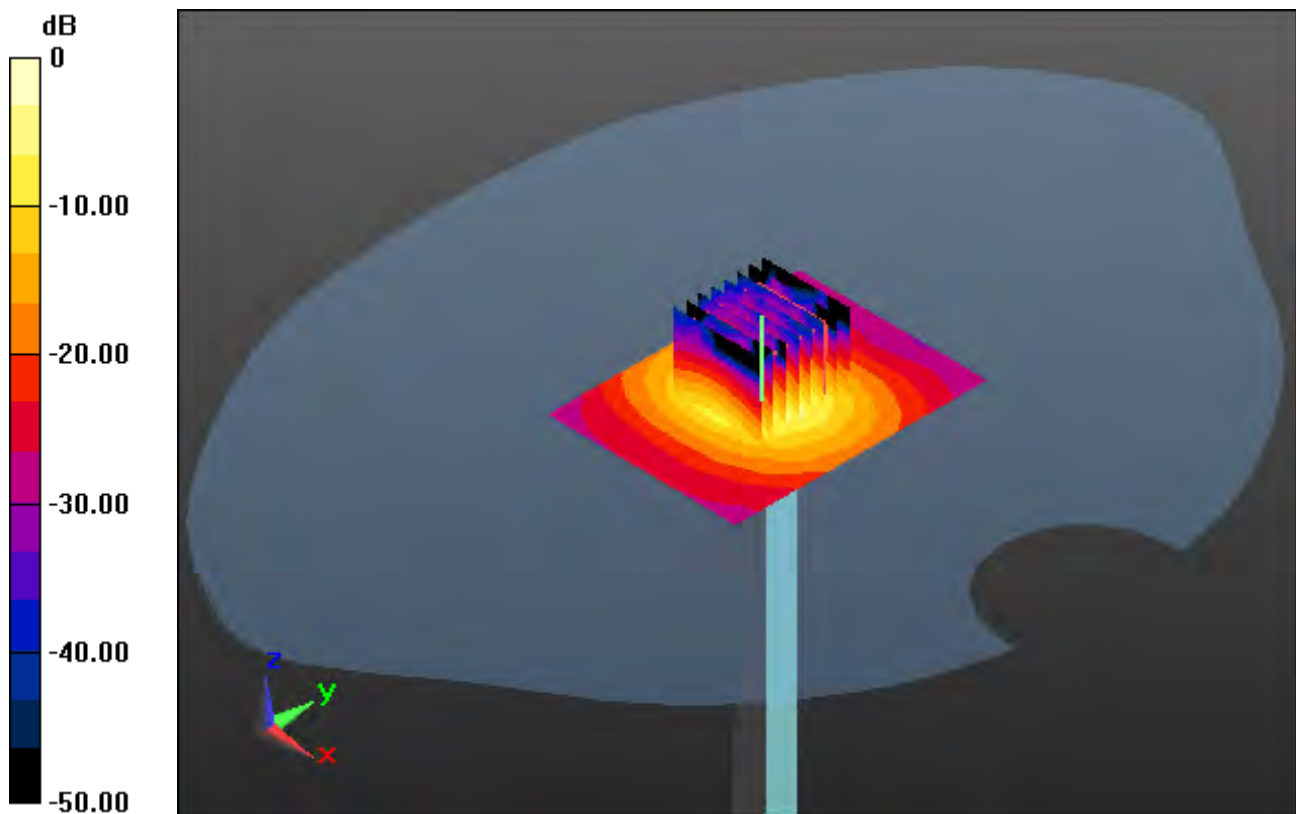
Area Scan (7x9x1): Measurement grid: dx=10mm, dy=10mm

Zoom Scan (8x8x7)/Cube 0: Measurement grid: dx=4mm, dy=4mm, dz=1.4mm, Graded Ratio:1.4

Power Drift = 0.03 dB

Peak SAR (extrapolated) = 37.3 W/kg

SAR(1 g) = 8.15 W/kg; SAR(10 g) = 2.29 W/kg



0 dB = 22.4 W/kg

DT&C Co., Ltd.

DUT: PM90G; Type: PDA

Communication System: UID 0, GSM 850 (0); Frequency: 836.6 MHz; Duty Cycle: 1:8.3
Medium parameters used: $f = 836.6$ MHz; $\sigma = 0.891$ S/m; $\epsilon_r = 42.785$; $\rho = 1000$ kg/m³
Phantom section: Right Section

DASY5 Configuration:

Probe: EX3DV4 - SN3866; ConvF(9.39, 9.39, 9.39); Calibrated: 5/28/2019; Electronics: DAE4 Sn1394
Sensor-Surface: 2mm (Mechanical Surface Detection)
Phantom: SAM-twin middle_2013_09_24; Type: QD000P40CD; Serial: 1782
Measurement SW: DASY52, Version 52.8 (8); SEMCAD X Version 14.6.10 (7331)

Test Date: 2019-07-26; Ambient Temp: 22.3; Tissue Temp: 22.8

Right Touch, GSM850 Ch. 190, Ant Internal, Standard Battery

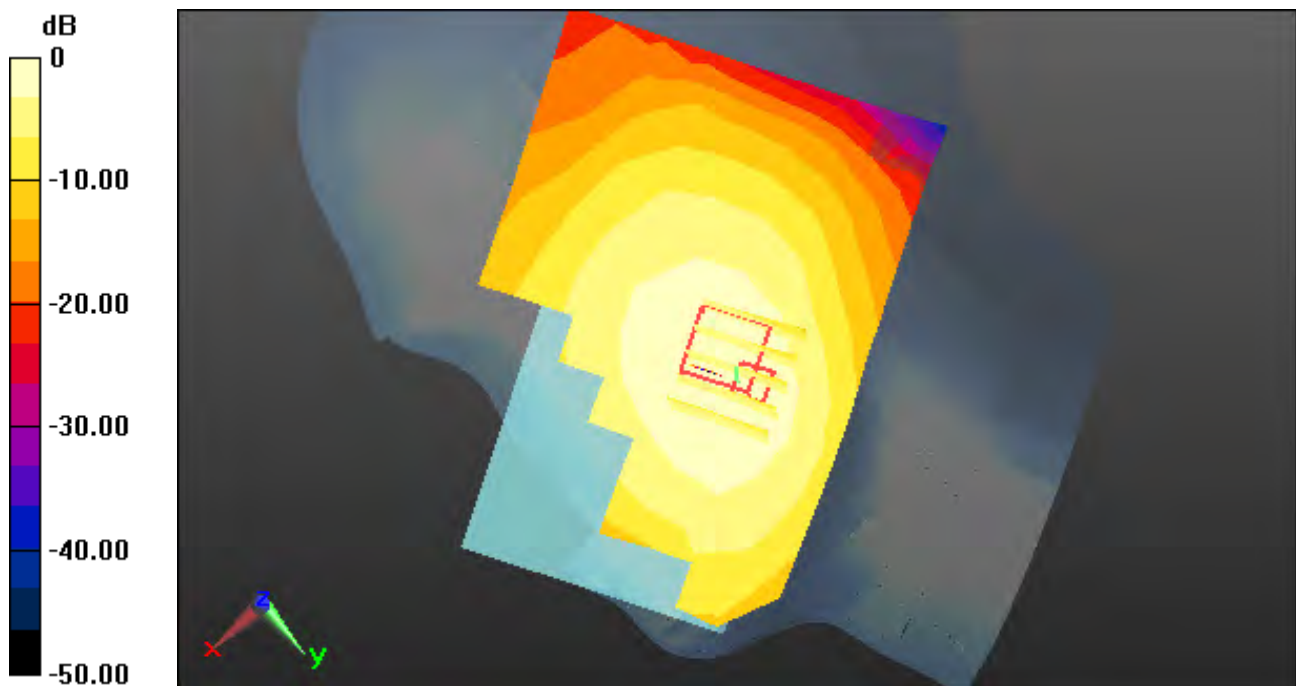
Area Scan (9x14x1): Measurement grid: dx=15mm, dy=15mm

Zoom Scan (5x5x7)/Cube 0: Measurement grid: dx=8mm, dy=8mm, dz=5mm

Power Drift = 0.09 dB

Peak SAR (extrapolated) = 0.387 W/kg

SAR(1 g) = 0.255 W/kg; SAR(10 g) = 0.176 W/kg



0 dB = 0.314 W/kg

DT&C Co., Ltd.

DUT: PM90G; Type: PDA

Communication System: UID 0, GSM 850_2 Tx (0); Frequency: 836.6 MHz; Duty Cycle: 1:4.15
Medium parameters used: $f = 836.6$ MHz; $\sigma = 0.891$ S/m; $\epsilon_r = 42.785$; $\rho = 1000$ kg/m³
Phantom section: Right Section

DASY5 Configuration:

Probe: EX3DV4 - SN3866; ConvF(9.39, 9.39, 9.39); Calibrated: 5/28/2019; Electronics: DAE4 Sn1394
Sensor-Surface: 2mm (Mechanical Surface Detection)
Phantom: SAM-twin middle_2013_09_24; Type: QD000P40CD; Serial: 1782
Measurement SW: DASY52, Version 52.8 (8); SEMCAD X Version 14.6.10 (7331)

Test Date: 2019-07-26; Ambient Temp: 22.3; Tissue Temp: 22.8

Right Touch, GSM850 GPRS 2Tx Ch. 190, Ant Internal, Standard Battery

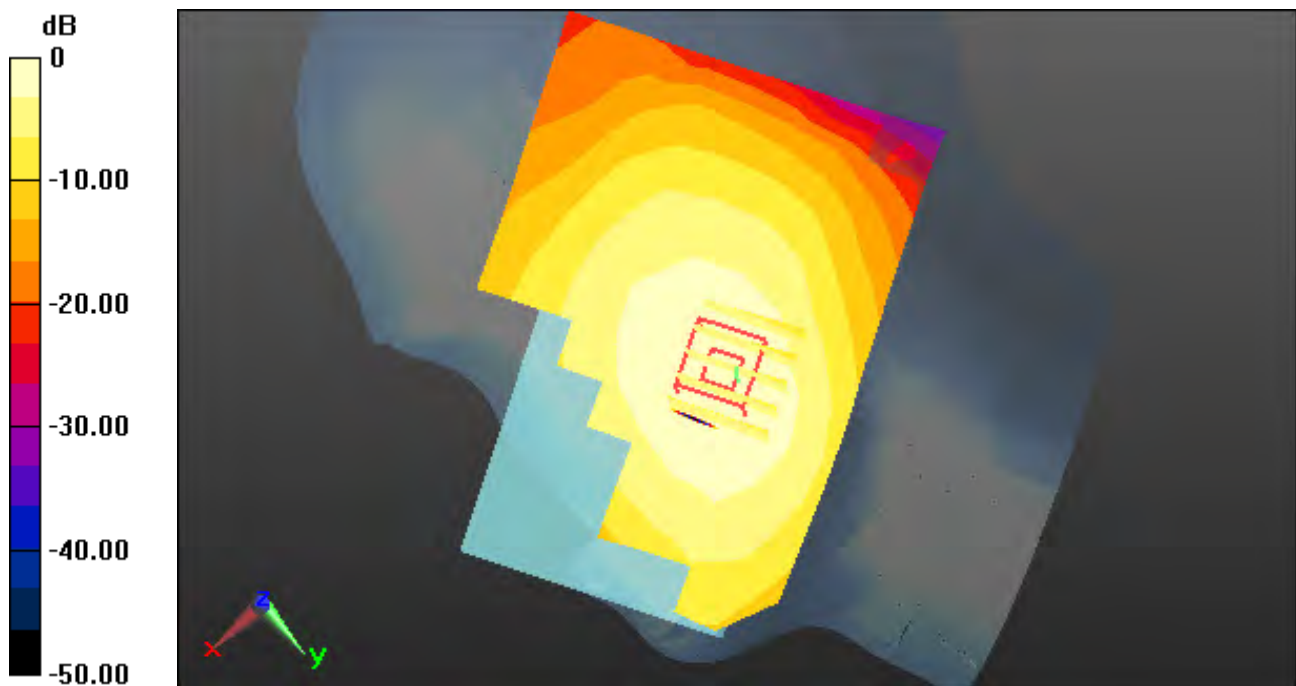
Area Scan (9x14x1): Measurement grid: dx=15mm, dy=15mm

Zoom Scan (5x5x7)/Cube 0: Measurement grid: dx=8mm, dy=8mm, dz=5mm

Power Drift = -0.15 dB

Peak SAR (extrapolated) = 0.526 W/kg

SAR(1 g) = 0.332 W/kg; SAR(10 g) = 0.248 W/kg



0 dB = 0.382 W/kg

DT&C Co., Ltd.

DUT: PM90G; Type: PDA

Communication System: UID 0, PCS 1900 (0); Frequency: 1880 MHz; Duty Cycle: 1:8.3
Medium parameters used: $f = 1880$ MHz; $\sigma = 1.384$ S/m; $\epsilon_r = 40.087$; $\rho = 1000$ kg/m³
Phantom section: Left Section

DASY5 Configuration:

Probe: EX3DV4 - SN7337; ConvF(8.49, 8.49, 8.49) @ 1880 MHz; Calibrated: 2018-11-22;
Electronics: DAE4 Sn1453
Sensor-Surface: 2mm (Mechanical Surface Detection)
Phantom: SAM_Right_20170922; Type: QD000P40CD; Serial: 1895
Measurement SW: DASY52, Version 52.10 (2); SEMCAD X Version 14.6.12 (7450)

Test Date: 2019-07-15; Ambient Temp: 21.6; Tissue Temp: 21.5

Left Touch, PCS1900 Ch. 661, Ant Internal, Standard Battery

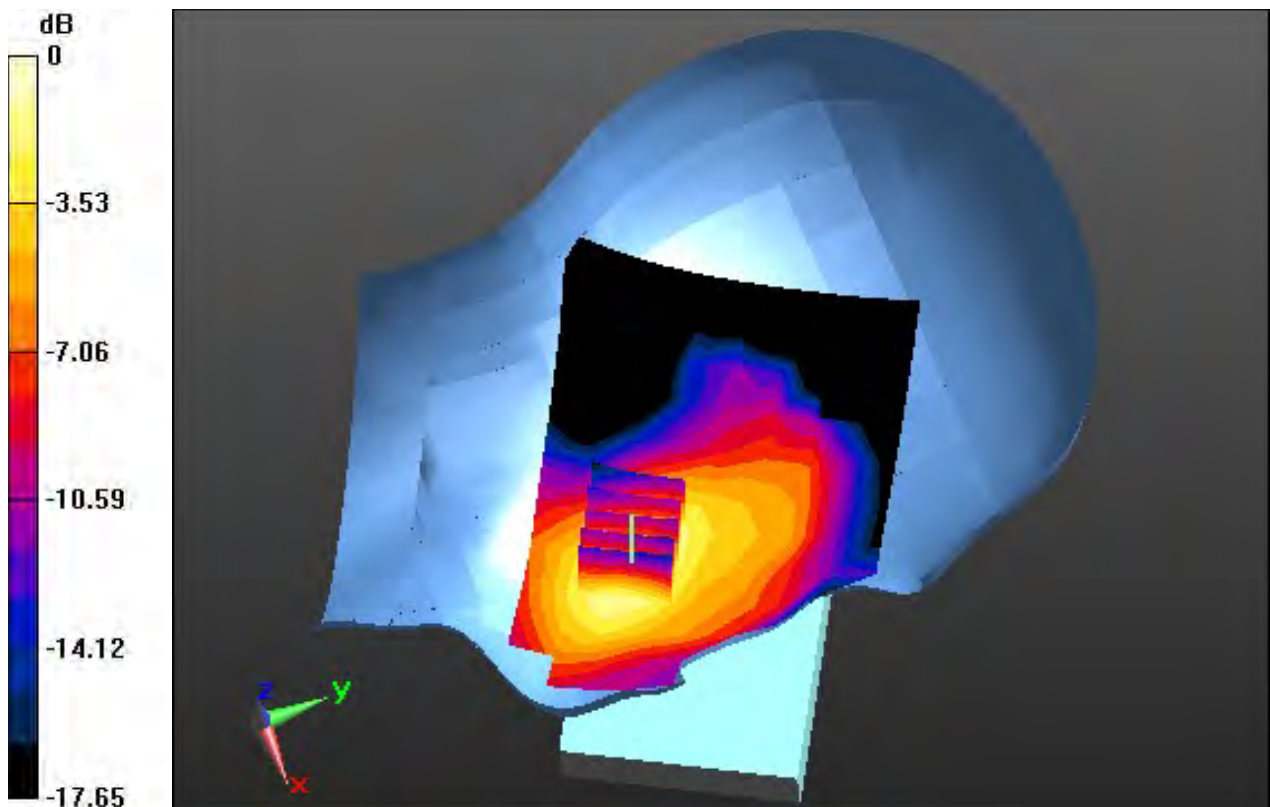
Area Scan (9x14x1): Measurement grid: dx=15mm, dy=15mm

Zoom Scan (5x5x7)/Cube 0: Measurement grid: dx=8mm, dy=8mm, dz=5mm

Power Drift = -0.12 dB

Peak SAR (extrapolated) = 0.290 W/kg

SAR(1 g) = 0.187 W/kg; SAR(10 g) = 0.115 W/kg



0 dB = 0.242 W/kg

DT&C Co., Ltd.

DUT: PM90G; Type: PDA

Communication System: UID 0, PCS 1900 2 Tx (0); Frequency: 1880 MHz; Duty Cycle: 1:4.15
Medium parameters used: $f = 1880$ MHz; $\sigma = 1.384$ S/m; $\epsilon_r = 40.087$; $\rho = 1000$ kg/m³
Phantom section: Left Section

DASY5 Configuration:

Probe: EX3DV4 - SN7337; ConvF(8.49, 8.49, 8.49) @ 1880 MHz; Calibrated: 2018-11-22;
Electronics: DAE4 Sn1453

Sensor-Surface: 2mm (Mechanical Surface Detection)

Phantom: SAM_Right_20170922; Type: QD000P40CD; Serial: 1895

Measurement SW: DASY52, Version 52.10 (2); SEMCAD X Version 14.6.12 (7450)

Test Date: 2019-07-15; Ambient Temp: 21.6; Tissue Temp: 21.5

Left Touch, PCS1900 GPRS 2 Tx Ch. 661, Ant Internal, Standard Battery

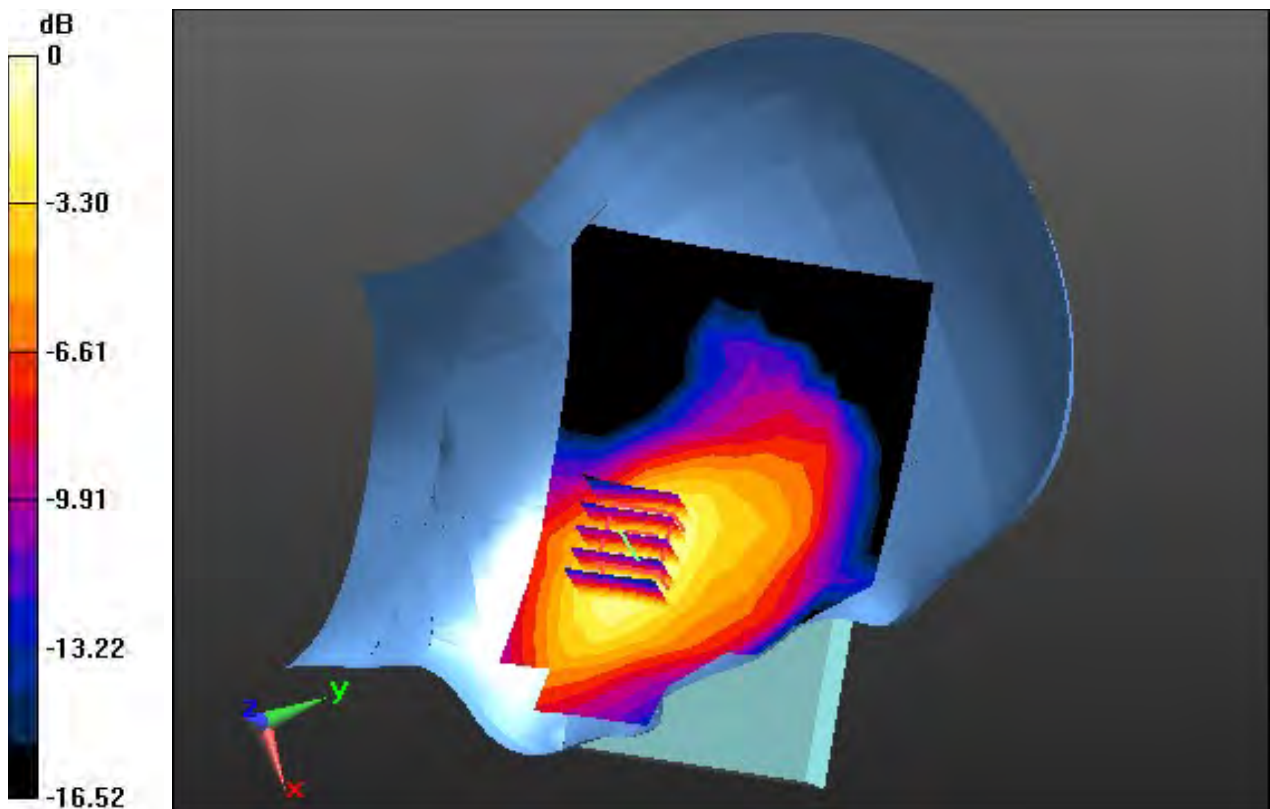
Area Scan (9x14x1): Measurement grid: dx=15mm, dy=15mm

Zoom Scan (5x5x7)/Cube 0: Measurement grid: dx=8mm, dy=8mm, dz=5mm

Power Drift = 0.08 dB

Peak SAR (extrapolated) = 0.349 W/kg

SAR(1 g) = 0.221 W/kg; SAR(10 g) = 0.136 W/kg



0 dB = 0.290 W/kg

DT&C Co., Ltd.

DUT: PM90G; Type: PDA

Communication System: UID 0, WCDMA 850 (0); Frequency: 836.6 MHz; Duty Cycle: 1:1
Medium parameters used: $f = 836.6$ MHz; $\sigma = 0.879$ S/m; $\epsilon_r = 42.344$; $\rho = 1000$ kg/m³
Phantom section: Right Section

DASY5 Configuration:

Probe: EX3DV4 - SN3866; ConvF(9.39, 9.39, 9.39); Calibrated: 5/28/2019; Electronics: DAE4 Sn1394
Sensor-Surface: 2mm (Mechanical Surface Detection)
Phantom: SAM-twin middle_2013_09_24; Type: QD000P40CD; Serial: 1782
Measurement SW: DASY52, Version 52.8 (8); SEMCAD X Version 14.6.10 (7331)

Test Date: 2019-07-29; Ambient Temp: 22.5; Tissue Temp: 22.2

Right Touch, WCDMA Band 5 Ch. 4183, Ant Internal, Standard Battery

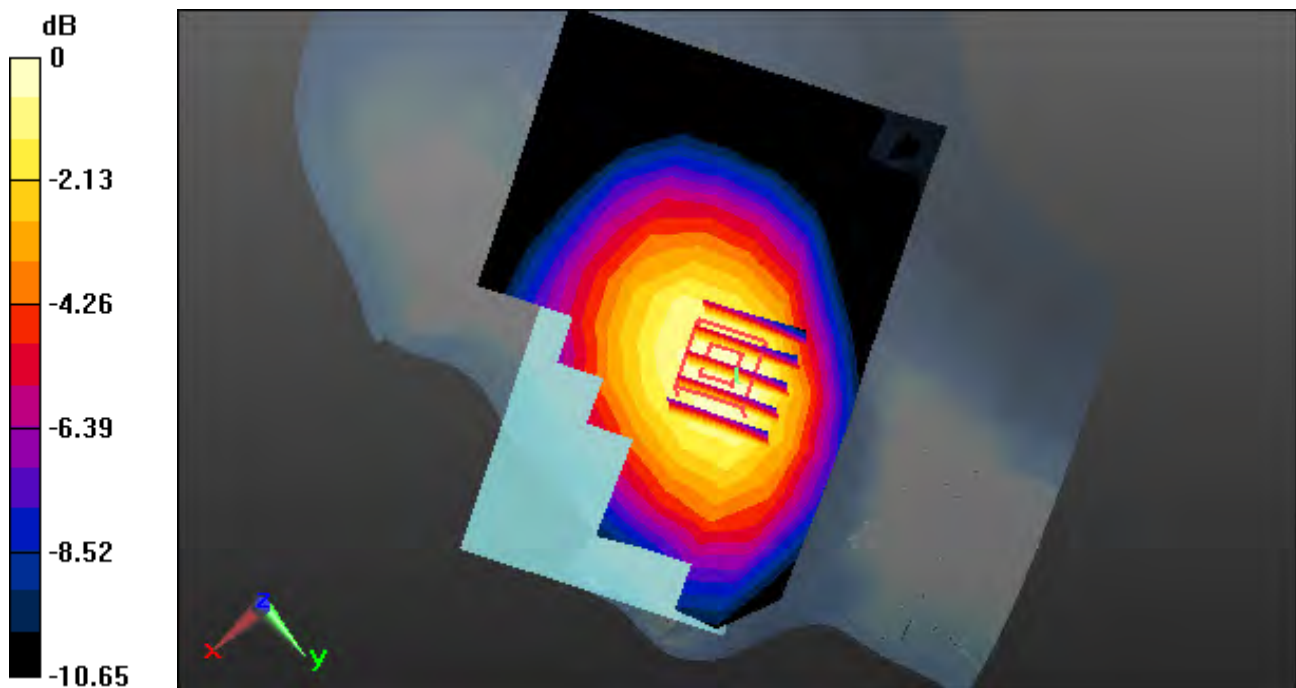
Area Scan (9x14x1): Measurement grid: dx=15mm, dy=15mm

Zoom Scan (5x5x7)/Cube 0: Measurement grid: dx=8mm, dy=8mm, dz=5mm

Power Drift = -0.09 dB

Peak SAR (extrapolated) = 0.435 W/kg

SAR(1 g) = 0.338 W/kg; SAR(10 g) = 0.252 W/kg



0 dB = 0.386 W/kg

DT&C Co., Ltd.

DUT: PM90G; Type: PDA

Communication System: UID 0, WCDMA (0); Frequency: 1732.4 MHz; Duty Cycle: 1:1
Medium parameters used: $f = 1732.4$ MHz; $\sigma = 1.324$ S/m; $\epsilon_r = 40.805$; $\rho = 1000$ kg/m³
Phantom section: Left Section

DASY5 Configuration:

Probe: EX3DV4 - SN7337; ConvF(8.96, 8.96, 8.96) @ 1732.4 MHz; Calibrated: 2018-11-22;
Electronics: DAE4 Sn1453

Sensor-Surface: 2mm (Mechanical Surface Detection)

Phantom: SAM_Right_20170922; Type: QD000P40CD; Serial: 1895

Measurement SW: DASY52, Version 52.10 (2); SEMCAD X Version 14.6.12 (7450)

Test Date: 2019-08-12; Ambient Temp: 20.9; Tissue Temp: 20.8

Left Touch, WCDMA Band 4 Ch. 1412, Ant Internal, Standard Battery

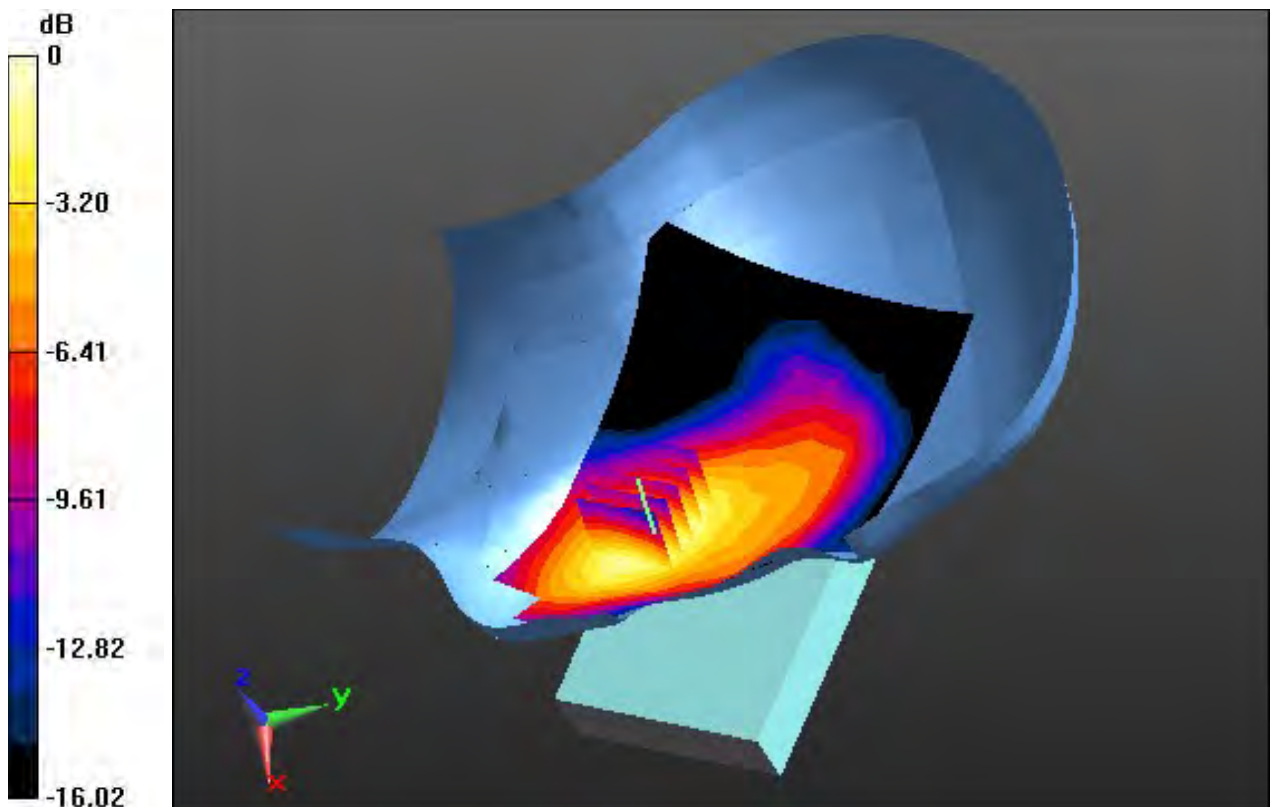
Area Scan (9x14x1): Measurement grid: dx=15mm, dy=15mm

Zoom Scan (5x5x7)/Cube 0: Measurement grid: dx=8mm, dy=8mm, dz=5mm

Power Drift = 0.10 dB

Peak SAR (extrapolated) = 0.811 W/kg

SAR(1 g) = 0.546 W/kg; SAR(10 g) = 0.352 W/kg



0 dB = 0.692 W/kg

DT&C Co., Ltd.

DUT: PM90G; Type: PDA

Communication System: UID 0, WCDMA (0); Frequency: 1880 MHz; Duty Cycle: 1:1
Medium parameters used: $f = 1880$ MHz; $\sigma = 1.384$ S/m; $\epsilon_r = 40.087$; $\rho = 1000$ kg/m³
Phantom section: Left Section

DASY5 Configuration:

Probe: EX3DV4 - SN7337; ConvF(8.49, 8.49, 8.49) @ 1880 MHz; Calibrated: 2018-11-22;
Electronics: DAE4 Sn1453

Sensor-Surface: 2mm (Mechanical Surface Detection)

Phantom: SAM_Right_20170922; Type: QD000P40CD; Serial: 1895

Measurement SW: DASY52, Version 52.10 (2); SEMCAD X Version 14.6.12 (7450)

Test Date: 2019-07-15; Ambient Temp: 21.6; Tissue Temp: 21.5

Left Touch, WCDMA Band 2 Ch. 9400, Ant Internal, Standard Battery

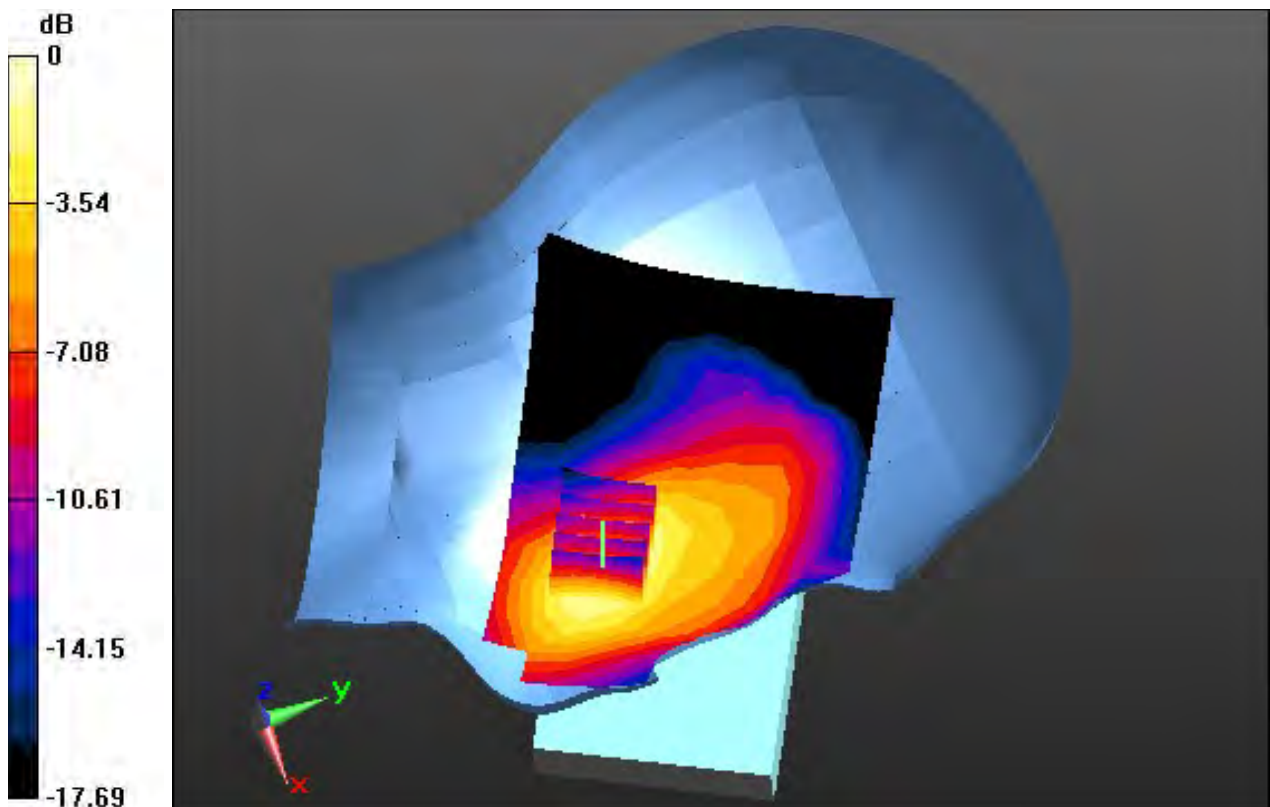
Area Scan (9x14x1): Measurement grid: dx=15mm, dy=15mm

Zoom Scan (5x5x7)/Cube 0: Measurement grid: dx=8mm, dy=8mm, dz=5mm

Power Drift = -0.19 dB

Peak SAR (extrapolated) = 0.714 W/kg

SAR(1 g) = 0.457 W/kg; SAR(10 g) = 0.283 W/kg



0 dB = 0.593 W/kg

DT&C Co., Ltd.

DUT: PM90G; Type: PDA

Communication System: UID 0, LTE Band 12 (FCC) (0); Frequency: 707.5 MHz; Duty Cycle: 1:1
Medium parameters used: $f = 707.5$ MHz; $\sigma = 0.866$ S/m; $\epsilon_r = 42.824$; $\rho = 1000$ kg/m³
Phantom section: Right Section

DASY5 Configuration:

Probe: EX3DV4 - SN3866; ConvF(9.85, 9.85, 9.85); Calibrated: 5/28/2019; Electronics: DAE4 Sn1394
Sensor-Surface: 2mm (Mechanical Surface Detection)
Phantom: SAM-twin middle_2013_09_24; Type: QD000P40CD; Serial: 1782
Measurement SW: DASY52, Version 52.8 (8); SEMCAD X Version 14.6.10 (7331)

Test Date: 2019-07-30; Ambient Temp: 22.0; Tissue Temp: 21.9

Right Touch, LTE Band 12 Ch. 23095, Ant Internal, Standard Battery

Mode : BandWidth 10 MHz, QPSK, RB Size: 1

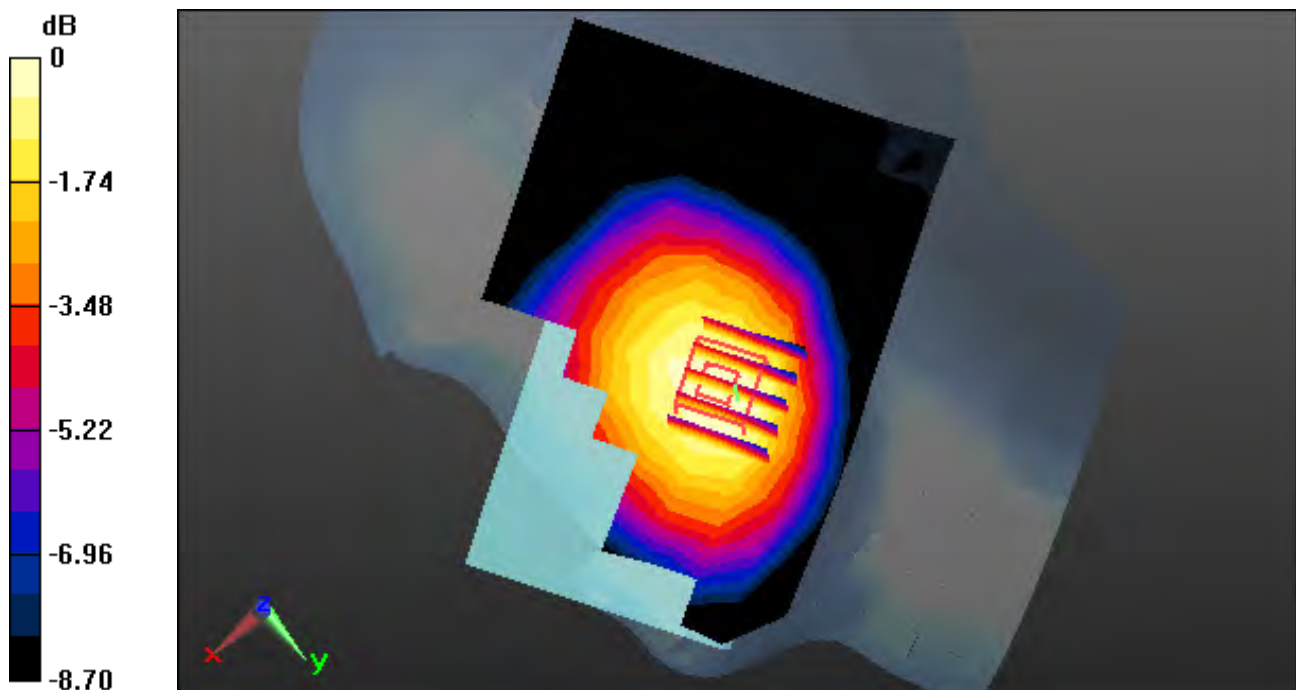
Area Scan (9x14x1): Measurement grid: dx=15mm, dy=15mm

Zoom Scan (5x5x7)/Cube 0: Measurement grid: dx=8mm, dy=8mm, dz=5mm

Power Drift = 0.12 dB

Peak SAR (extrapolated) = 0.206 W/kg

SAR(1 g) = 0.172 W/kg; SAR(10 g) = 0.137 W/kg



0 dB = 0.190 W/kg

DT&C Co., Ltd.

DUT: PM90G; Type: PDA

Communication System: UID 0, LTE Band 13 (0); Frequency: 782 MHz; Duty Cycle: 1:1
Medium parameters used: $f = 782 \text{ MHz}$; $\sigma = 0.91 \text{ S/m}$; $\epsilon_r = 40.984$; $\rho = 1000 \text{ kg/m}^3$
Phantom section: Right Section

DASY5 Configuration:

Probe: EX3DV4 - SN3866; ConvF(9.85, 9.85, 9.85); Calibrated: 5/28/2019; Electronics: DAE4 Sn1394
Sensor-Surface: 2mm (Mechanical Surface Detection)
Phantom: SAM-twin middle_2013_09_24; Type: QD000P40CD; Serial: 1782
Measurement SW: DASY52, Version 52.8 (8); SEMCAD X Version 14.6.10 (7331)

Test Date: 2019-08-01; Ambient Temp: 22.1; Tissue Temp: 21.8

Right Touch, LTE Band 13 Ch. 23230, Ant Internal, Standard Battery

Mode : BandWidth 10 MHz, QPSK, RB Size: 1

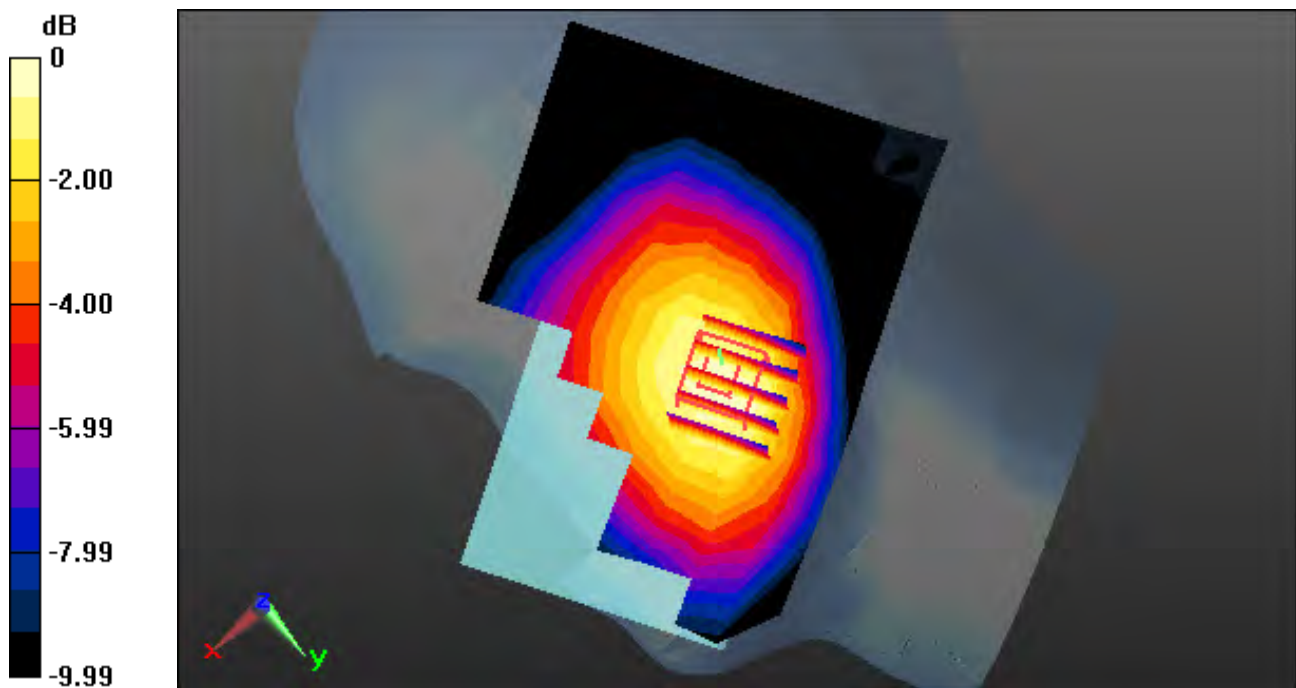
Area Scan (9x14x1): Measurement grid: $dx=15\text{mm}$, $dy=15\text{mm}$

Zoom Scan (5x5x7)/Cube 0: Measurement grid: $dx=8\text{mm}$, $dy=8\text{mm}$, $dz=5\text{mm}$

Power Drift = -0.12 dB

Peak SAR (extrapolated) = 0.309 W/kg

SAR(1 g) = 0.250 W/kg; SAR(10 g) = 0.191 W/kg



0 dB = 0.282 W/kg

DT&C Co., Ltd.

DUT: PM90G; Type: PDA

Communication System: UID 0, LTE Band 14 (0); Frequency: 793 MHz; Duty Cycle: 1:1
Medium parameters used: $f = 793 \text{ MHz}$; $\sigma = 0.91 \text{ S/m}$; $\epsilon_r = 40.359$; $\rho = 1000 \text{ kg/m}^3$
Phantom section: Right Section

DASY5 Configuration:

Probe: EX3DV4 - SN3866; ConvF(9.85, 9.85, 9.85); Calibrated: 5/28/2019; Electronics: DAE4 Sn1394
Sensor-Surface: 2mm (Mechanical Surface Detection)
Phantom: SAM-twin middle_2013_09_24; Type: QD000P40CD; Serial: 1782
Measurement SW: DASY52, Version 52.8 (8); SEMCAD X Version 14.6.10 (7331)

Test Date: 2019-08-02; Ambient Temp: 21.7; Tissue Temp: 21.5

Right Touch, LTE Band 14 Ch. 23330, Ant Internal, Standard Battery

Mode : BandWidth 10 MHz, QPSK, RB Size: 1

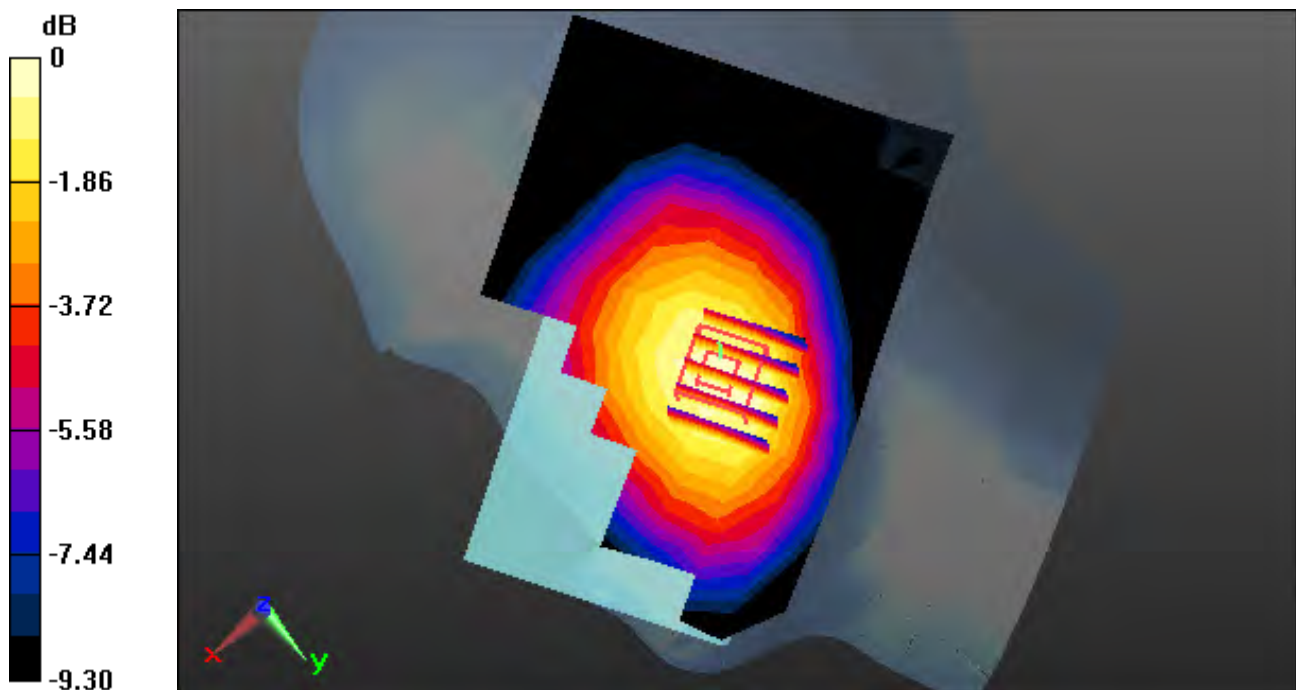
Area Scan (9x14x1): Measurement grid: $dx=15\text{mm}$, $dy=15\text{mm}$

Zoom Scan (5x5x7)/Cube 0: Measurement grid: $dx=8\text{mm}$, $dy=8\text{mm}$, $dz=5\text{mm}$

Power Drift = 0.09 dB

Peak SAR (extrapolated) = 0.337 W/kg

SAR(1 g) = 0.274 W/kg; SAR(10 g) = 0.211 W/kg



0 dB = 0.306 W/kg

DT&C Co., Ltd.

DUT: PM90G; Type: PDA

Communication System: UID 0, LTE BAND 26 (0); Frequency: 831.5 MHz; Duty Cycle: 1:1
Medium parameters used: $f = 831.5 \text{ MHz}$; $\sigma = 0.895 \text{ S/m}$; $\epsilon_r = 42.934$; $\rho = 1000 \text{ kg/m}^3$
Phantom section: Right Section

DASY5 Configuration:

Probe: EX3DV4 - SN3866; ConvF(9.39, 9.39, 9.39); Calibrated: 5/28/2019; Electronics: DAE4 Sn1394
Sensor-Surface: 2mm (Mechanical Surface Detection)
Phantom: SAM-twin middle_2013_09_24; Type: QD000P40CD; Serial: 1782
Measurement SW: DASY52, Version 52.8 (8); SEMCAD X Version 14.6.10 (7331)

Test Date: 2019-07-31; Ambient Temp: 22.3; Tissue Temp: 22.0

Right Touch, LTE Band 26 Ch. 26865, Ant Internal, Standard Battery

Mode : BandWidth 15 MHz, QPSK, RB Size: 1

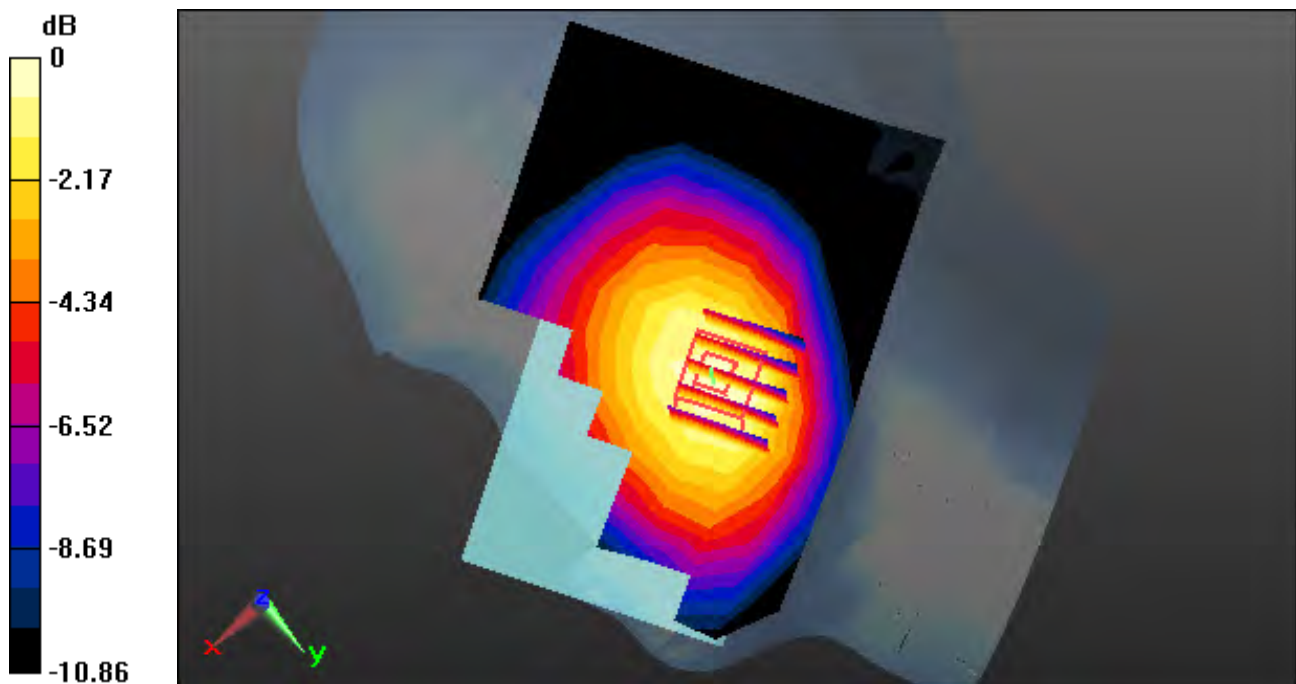
Area Scan (9x14x1): Measurement grid: $dx=15\text{mm}$, $dy=15\text{mm}$

Zoom Scan (5x5x7)/Cube 0: Measurement grid: $dx=8\text{mm}$, $dy=8\text{mm}$, $dz=5\text{mm}$

Power Drift = -0.05 dB

Peak SAR (extrapolated) = 0.438 W/kg

SAR(1 g) = 0.344 W/kg; SAR(10 g) = 0.255 W/kg



0 dB = 0.395 W/kg

DT&C Co., Ltd.

DUT: PM90G; Type: PDA

Communication System: UID 0, LTE Band 4 (0); Frequency: 1732.5 MHz; Duty Cycle: 1:1
Medium parameters used: $f = 1732.5$ MHz; $\sigma = 1.324$ S/m; $\epsilon_r = 40.805$; $\rho = 1000$ kg/m³
Phantom section: Left Section

DASY5 Configuration:

Probe: EX3DV4 - SN7337; ConvF(8.96, 8.96, 8.96) @ 1732.5 MHz; Calibrated: 2018-11-22
Electronics: DAE4 Sn1453

Sensor-Surface: 2mm (Mechanical Surface Detection)

Phantom: SAM_Right_20170922; Type: QD000P40CD; Serial: 1895

Measurement SW: DASY52, Version 52.10 (2); SEMCAD X Version 14.6.12 (7450)

Test Date: 2019-08-12; Ambient Temp: 20.9; Tissue Temp: 20.8

Left Touch, LTE Band 4 Ch. 20175, Ant Internal, Standard Battery

Mode : BandWidth 20 MHz, QPSK, RB Size: 1

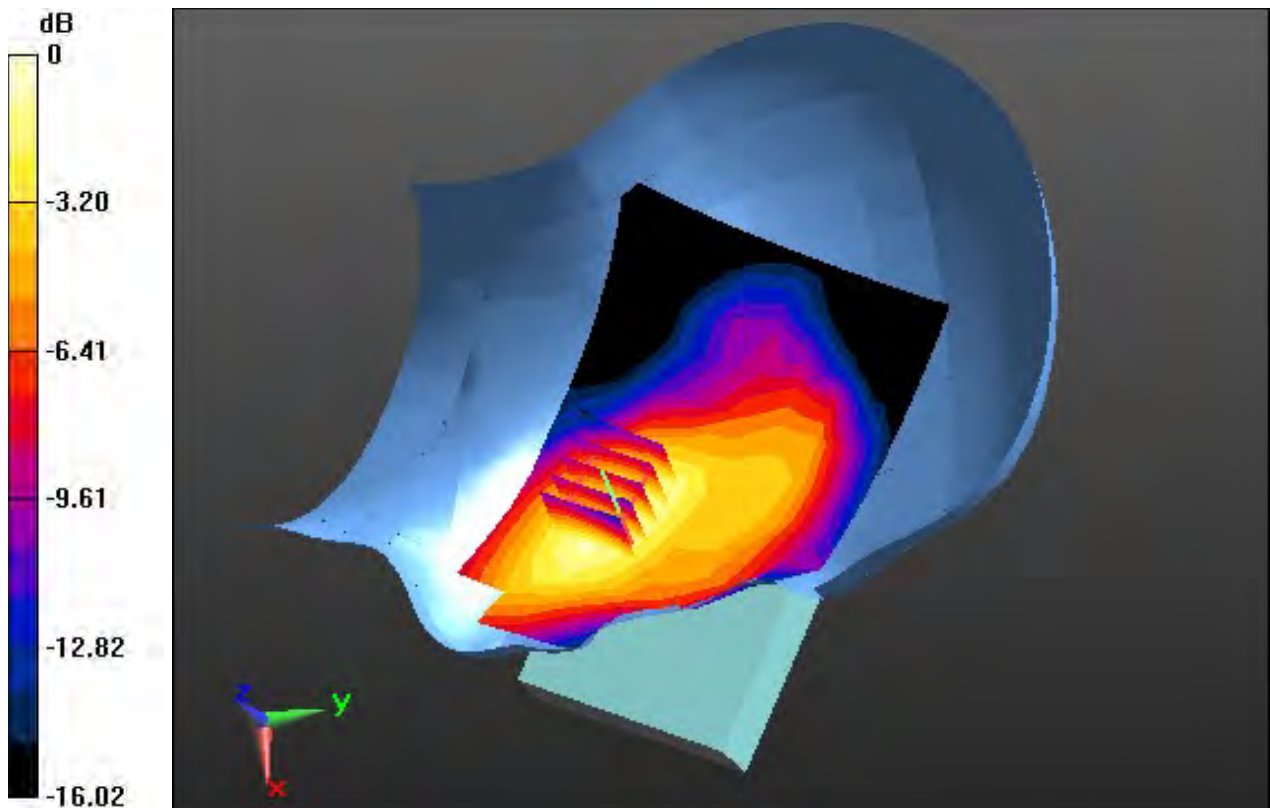
Area Scan (9x14x1): Measurement grid: dx=15mm, dy=15mm

Zoom Scan (5x5x7)/Cube 0: Measurement grid: dx=8mm, dy=8mm, dz=5mm

Power Drift = 0.17 dB

Peak SAR (extrapolated) = 0.428 W/kg

SAR(1 g) = 0.293 W/kg; SAR(10 g) = 0.193 W/kg



0 dB = 0.365 W/kg

DT&C Co., Ltd.

DUT: PM90G; Type: PDA

Communication System: UID 0, LTE Band 25 (0); Frequency: 1860 MHz; Duty Cycle: 1:1
Medium parameters used: $f = 1860$ MHz; $\sigma = 1.366$ S/m; $\epsilon_r = 40.201$; $\rho = 1000$ kg/m³
Phantom section: Left Section

DASY5 Configuration:

Probe: EX3DV4 - SN7337; ConvF(8.49, 8.49, 8.49) @ 1860 MHz; Calibrated: 2018-11-22
Electronics: DAE4 Sn1453
Sensor-Surface: 2mm (Mechanical Surface Detection)
Phantom: SAM_Right_20170922; Type: QD000P40CD; Serial: 1895
Measurement SW: DASY52, Version 52.10 (2); SEMCAD X Version 14.6.12 (7450)

Test Date: 2019-07-17; Ambient Temp: 21.3; Tissue Temp: 21.2

Left Touch, LTE Band 25 Ch. 26140, Ant Internal, Standard Battery

Mode : BandWidth 20 MHz, QPSK, RB Size: 1

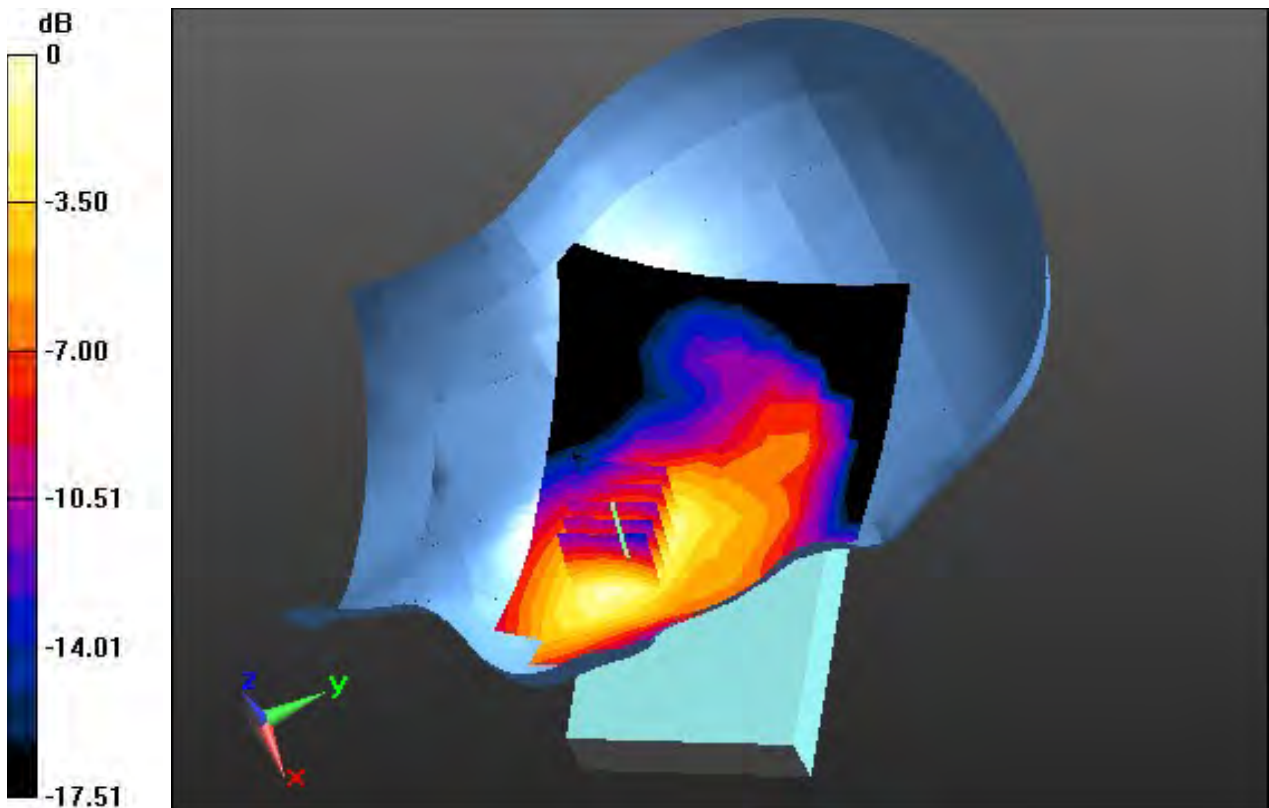
Area Scan (9x14x1): Measurement grid: dx=15mm, dy=15mm

Zoom Scan (5x5x7)/Cube 0: Measurement grid: dx=8mm, dy=8mm, dz=5mm

Power Drift = -0.16 dB

Peak SAR (extrapolated) = 0.484 W/kg

SAR(1 g) = 0.314 W/kg; SAR(10 g) = 0.199 W/kg



0 dB = 0.407 W/kg

DT&C Co., Ltd.

DUT: PM90G; Type: PDA

Communication System: UID 0, LTE Band 7 (0); Frequency: 2560 MHz; Duty Cycle: 1:1
Medium parameters used: $f = 2560$ MHz; $\sigma = 1.917$ S/m; $\epsilon_r = 40.144$; $\rho = 1000$ kg/m³
Phantom section: Left Section

DASY5 Configuration:

Probe: EX3DV4 - SN7337; ConvF(7.43, 7.43, 7.43) @ 2560 MHz; Calibrated: 2018-11-22
Electronics: DAE4 Sn1453
Sensor-Surface: 2mm (Mechanical Surface Detection)
Phantom: SAM_Right_20170922; Type: QD000P40CD; Serial: 1895
Measurement SW: DASY52, Version 52.10 (2); SEMCAD X Version 14.6.12 (7450)

Test Date: 2019-07-09; Ambient Temp: 21.4; Tissue Temp: 21.2

Left Touch, LTE Band 7 Ch. 21350, Ant Internal, Standard Battery

Mode : BandWidth 20 MHz, QPSK, RB Size: 1

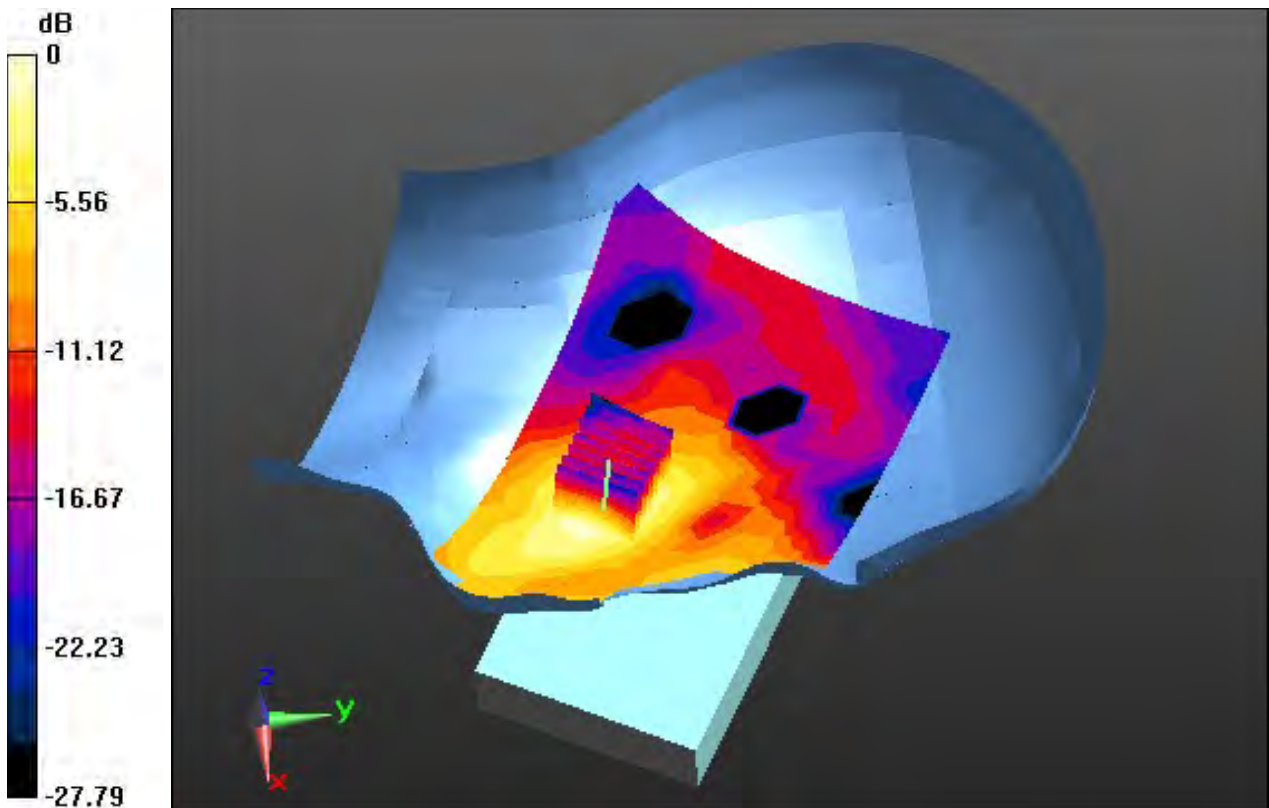
Area Scan (11x17x1): Measurement grid: dx=12mm, dy=12mm

Zoom Scan (7x7x7)/Cube 0: Measurement grid: dx=5mm, dy=5mm, dz=5mm

Power Drift = 0.00 dB

Peak SAR (extrapolated) = 0.255 W/kg

SAR(1 g) = 0.139 W/kg; SAR(10 g) = 0.072 W/kg



0 dB = 0.195 W/kg

DT&C Co., Ltd.

DUT: PM90G; Type: PDA

Communication System: UID 0, LTE Band 41(TDD) (0); Frequency: 2593 MHz;Duty Cycle: 1:1.58
Medium parameters used: $f = 2593$ MHz; $\sigma = 1.965$ S/m; $\epsilon_r = 37.689$; $\rho = 1000$ kg/m³
Phantom section: Left Section

DASY5 Configuration:

Probe: EX3DV4 - SN7337; ConvF(7.43, 7.43, 7.43) @ 2593 MHz; Calibrated: 2018-11-22
Electronics: DAE4 Sn1453

Sensor-Surface: 2mm (Mechanical Surface Detection)

Phantom: SAM_Right_20170922; Type: QD000P40CD; Serial: 1895

Measurement SW: DASY52, Version 52.10 (2); SEMCAD X Version 14.6.12 (7450)

Test Date: 2019-07-23; Ambient Temp: 20.7; Tissue Temp: 20.6

Left Touch, LTE Band 41 Ch. 40620, Ant Internal, Standard Battery

Mode : BandWidth 20 MHz, QPSK, RB Size: 1

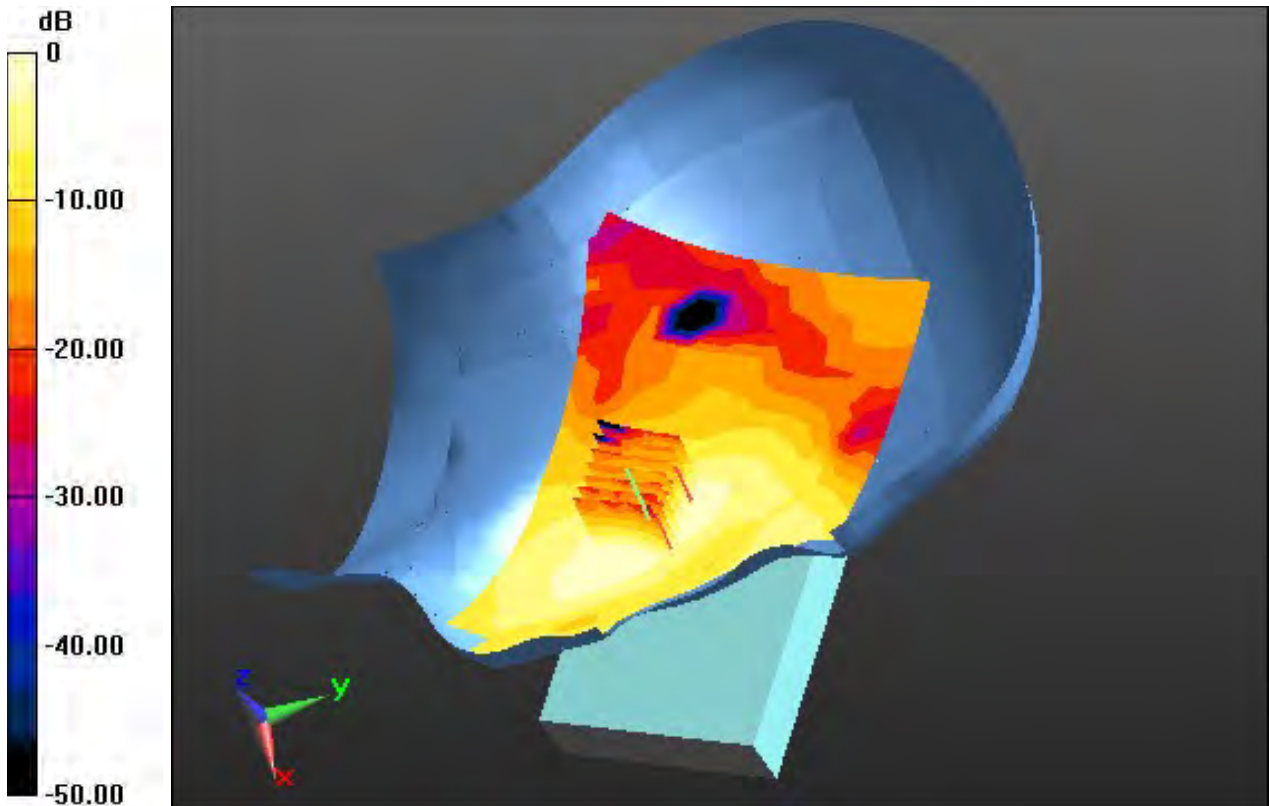
Area Scan (11x17x1): Measurement grid: dx=12mm, dy=12mm

Zoom Scan (7x7x7)/Cube 0: Measurement grid: dx=5mm, dy=5mm, dz=5mm

Power Drift = 0.00 dB

Peak SAR (extrapolated) = 0.170 W/kg

SAR(1 g) = 0.093 W/kg; SAR(10 g) = 0.049 W/kg



0 dB = 0.131 W/kg

DT&C Co., Ltd.

DUT: PM90G; Type: PDA

Communication System: UID 0, W-LAN (0); Frequency: 2437 MHz; Duty Cycle: 1:1
Medium parameters used: $f = 2437$ MHz; $\sigma = 1.798$ S/m; $\epsilon_r = 38.46$; $\rho = 1000$ kg/m³
Phantom section: Right Section

DASY5 Configuration:

Probe: EX3DV4 - SN3916; ConvF(7.66, 7.66, 7.66); Calibrated: 4/25/2019; Electronics: DAE4 Sn1392
Sensor-Surface: 2mm (Mechanical Surface Detection)
Phantom: SAM with CRP_2013_10_08_right; Type: QD000P40CD; Serial: TP:1785
Measurement SW: DASY52, Version 52.8 (8); SEMCAD X Version 14.6.10 (7331)

Test Date: 2019-08-14; Ambient Temp: 20.4; Tissue Temp: 20.5

Right Touch, WLAN(802.11b) Ch. 6, Ant Internal, Standard Battery

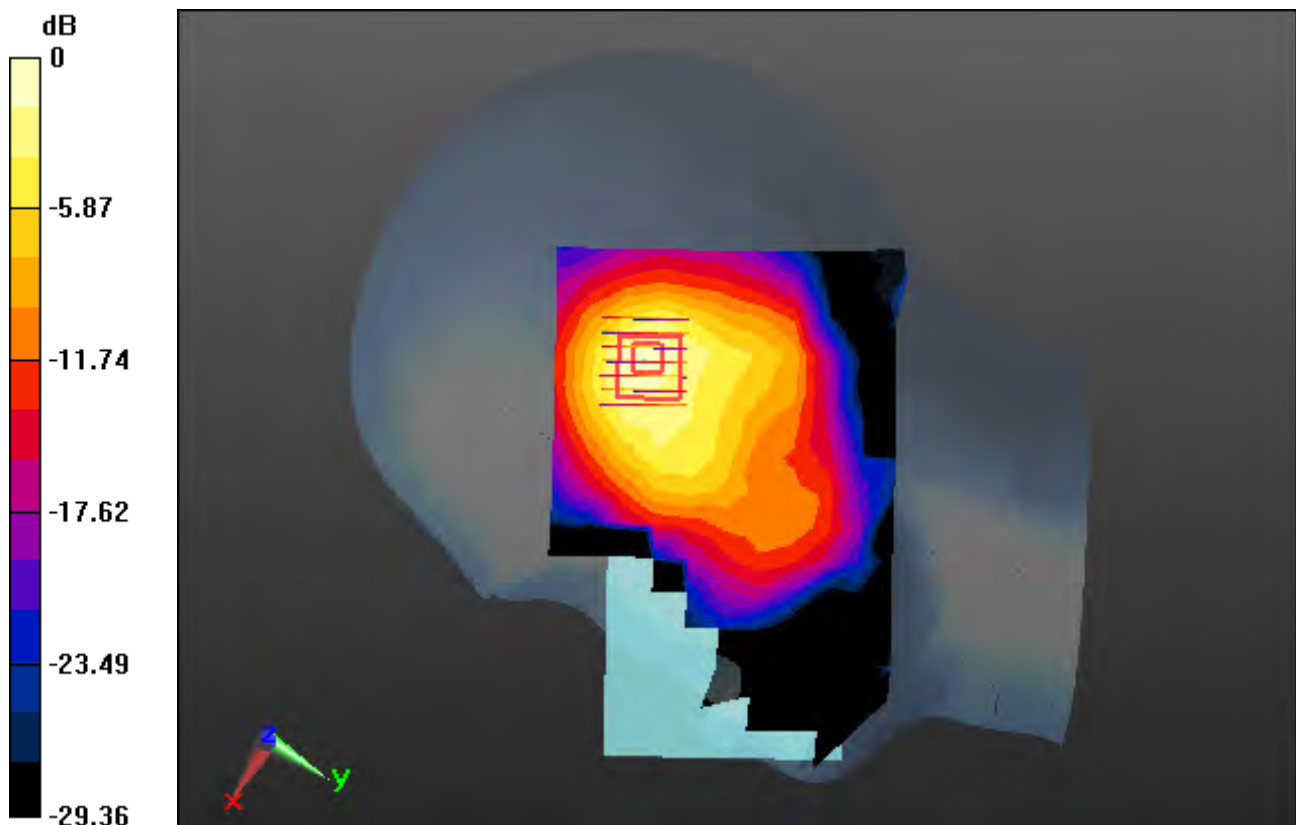
Area Scan (11x17x1): Measurement grid: dx=12mm, dy=12mm

Zoom Scan (7x7x7)/Cube 0: Measurement grid: dx=5mm, dy=5mm, dz=5mm

Power Drift = -0.05 dB

Peak SAR (extrapolated) = 0.533 W/kg

SAR(1 g) = 0.261 W/kg; SAR(10 g) = 0.128 W/kg



0 dB = 0.390 W/kg

DT&C Co., Ltd.

DUT: PM90G; Type: PDA

Communication System: UID 0, W-LAN_5200(Notebook) (0); Frequency: 5300 MHz;Duty Cycle: 1:1
Medium parameters used: $f = 5300$ MHz; $\sigma = 4.588$ S/m; $\epsilon_r = 35.577$; $\rho = 1000$ kg/m³
Phantom section: Right Section

DASY5 Configuration:

Probe: EX3DV4 - SN3916; ConvF(4.94, 4.94, 4.94); Calibrated: 4/25/2019; Electronics: DAE4 Sn1392
Sensor-Surface: 1.4mm (Mechanical Surface Detection)
Phantom: SAM with CRP_2016_07_22_middle; Type: QD000P40CD; Serial: TP:1786
Measurement SW: DASY52, Version 52.8 (8); SEMCAD X Version 14.6.10 (7331)

Test Date: 2019-08-16; Ambient Temp: 21.2; Tissue Temp: 21.4

Right Touch, WLAN(802.11a) Ch. 60, Ant Internal, Standard Battery

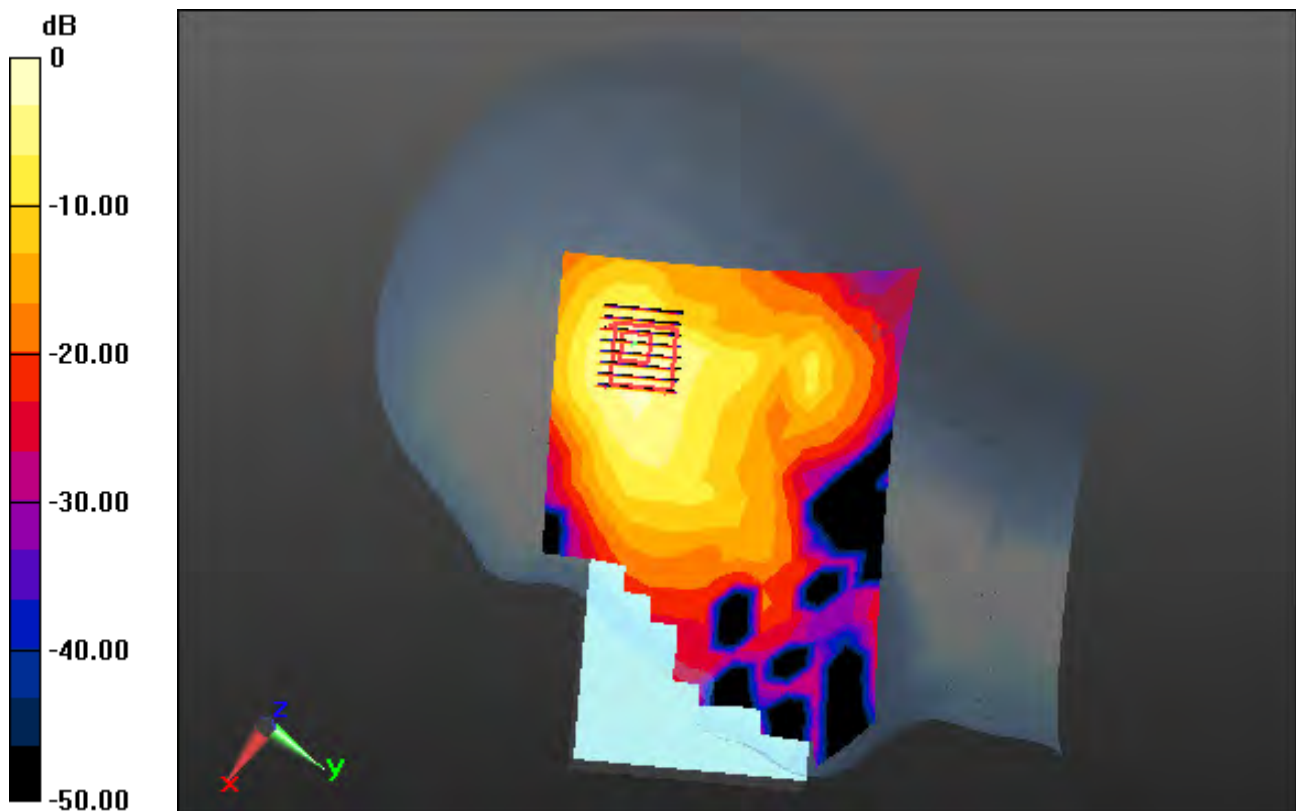
Area Scan (13x21x1): Measurement grid: dx=10mm, dy=10mm

Zoom Scan (8x8x7)/Cube 0: Measurement grid: dx=4mm, dy=4mm, dz=1.4mm, Graded Ratio:1.4

Power Drift = 0.07 dB

Peak SAR (extrapolated) = 3.09 W/kg

SAR(1 g) = 0.849 W/kg; SAR(10 g) = 0.308 W/kg



0 dB = 1.91 W/kg

DT&C Co., Ltd.

DUT: PM90G; Type: PDA

Communication System: UID 0, W-LAN_5600 (0); Frequency: 5500 MHz; Duty Cycle: 1:1
Medium parameters used: $f = 5500$ MHz; $\sigma = 4.988$ S/m; $\epsilon_r = 34.671$; $\rho = 1000$ kg/m³
Phantom section: Right Section

DASY5 Configuration:

Probe: EX3DV4 - SN3933; ConvF(4.87, 4.87, 4.87); Calibrated: 9/25/2018; Electronics: DAE4 Sn1391
Sensor-Surface: 1.4mm (Mechanical Surface Detection)
Phantom: SAM with CRP v5.0(Right); Type: QD000P40CD; Serial: 1220
Measurement SW: DASY52, Version 52.8 (8); SEMCAD X Version 14.6.10 (7331)

Test Date: 2019-08-14; Ambient Temp: 22.1; Tissue Temp: 22.3

Right Touch, WLAN(802.11a) Ch. 100, Ant Internal, Standard Battery

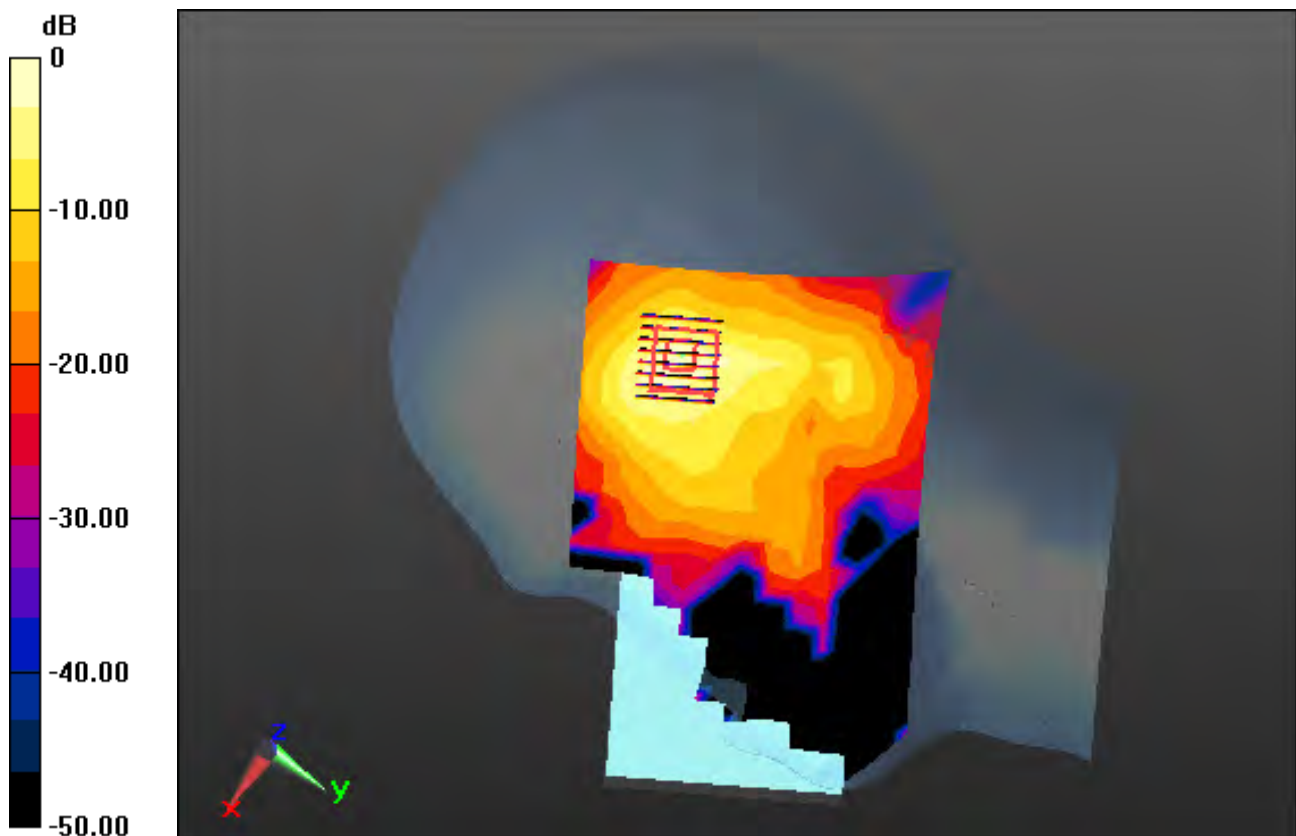
Area Scan (13x21x1): Measurement grid: dx=10mm, dy=10mm

Zoom Scan (8x8x7)/Cube 0: Measurement grid: dx=4mm, dy=4mm, dz=1.4mm, Graded Ratio:1.4

Power Drift = -0.12 dB

Peak SAR (extrapolated) = 3.41 W/kg

SAR(1 g) = 0.824 W/kg; SAR(10 g) = 0.279 W/kg



0 dB = 2.06 W/kg

DT&C Co., Ltd.

DUT: PM90G; Type: PDA

Communication System: UID 0, W-LAN_5800 (0); Frequency: 5825 MHz; Duty Cycle: 1:1
Medium parameters used: $f = 5825$ MHz; $\sigma = 5.407$ S/m; $\epsilon_r = 35.666$; $\rho = 1000$ kg/m³
Phantom section: Right Section

DASY5 Configuration:

Probe: EX3DV4 - SN3933; ConvF(4.77, 4.77, 4.77); Calibrated: 9/25/2018; Electronics: DAE4 Sn1391
Sensor-Surface: 1.4mm (Mechanical Surface Detection)
Phantom: SAM with CRP v5.0(Right); Type: QD000P40CD; Serial: 1220
Measurement SW: DASY52, Version 52.8 (8); SEMCAD X Version 14.6.10 (7331)

Test Date: 2019-08-16; Ambient Temp: 21.8; Tissue Temp: 21.9

Right Touch, WLAN(802.11a) Ch. 165, Ant Internal, Standard Battery

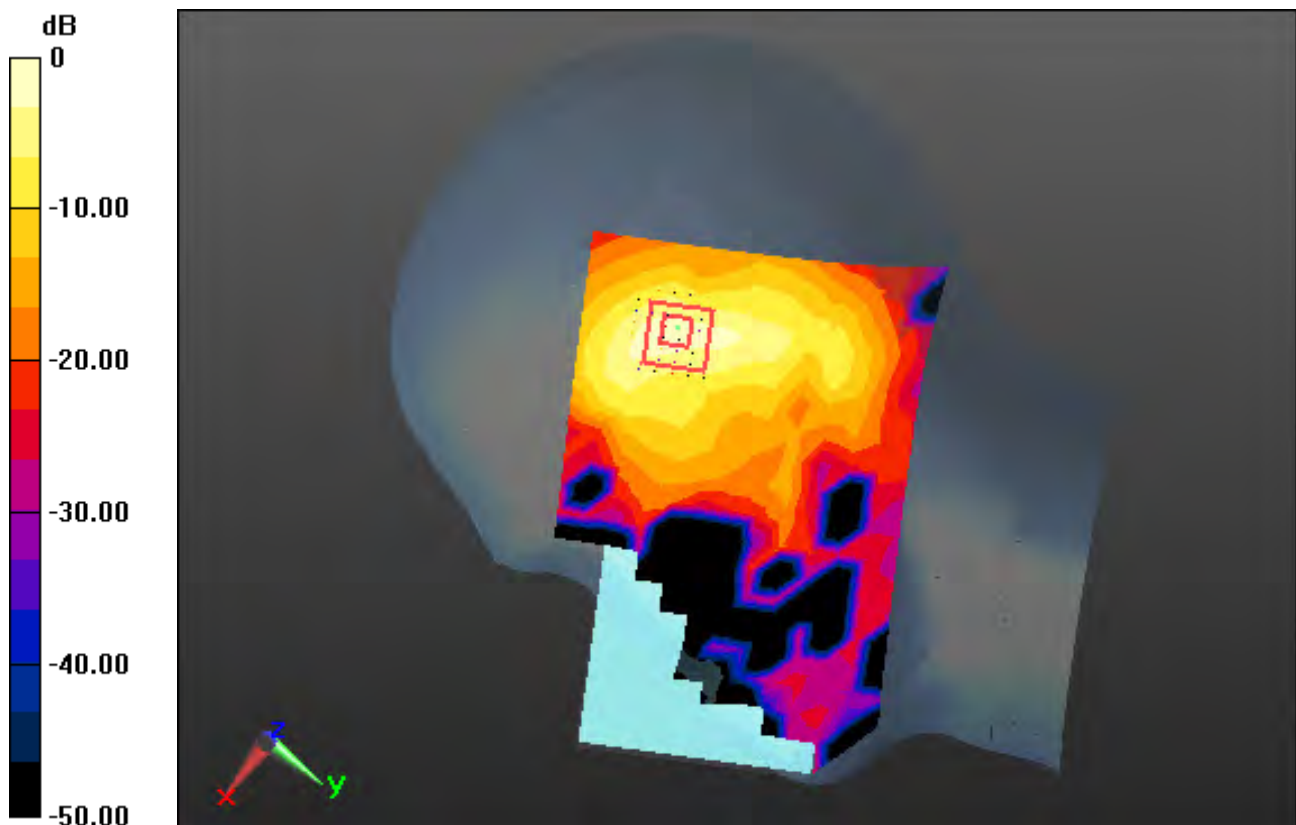
Area Scan (13x21x1): Measurement grid: dx=10mm, dy=10mm

Zoom Scan (8x8x7)/Cube 0: Measurement grid: dx=4mm, dy=4mm, dz=1.4mm, Graded Ratio:1.4

Power Drift = 0.04 dB

Peak SAR (extrapolated) = 2.42 W/kg

SAR(1 g) = 0.548 W/kg; SAR(10 g) = 0.179 W/kg



0 dB = 1.41 W/kg

DT&C Co., Ltd.

DUT: PM90W; Type: PDA

Communication System: UID 0, Bluetooth (0); Frequency: 2441 MHz; Duty Cycle: 1:1.302
Medium parameters used: $f = 2441$ MHz; $\sigma = 1.802$ S/m; $\epsilon_r = 38.404$; $\rho = 1000$ kg/m³
Phantom section: Right Section

DASY5 Configuration:

Probe: EX3DV4 - SN3916; ConvF(7.66, 7.66, 7.66); Calibrated: 4/25/2019; Electronics: DAE4 Sn1392
Sensor-Surface: 2mm (Mechanical Surface Detection)
Phantom: SAM with CRP_2013_10_08_right; Type: QD000P40CD; Serial: TP:1785
Measurement SW: DASY52, Version 52.8 (8); SEMCAD X Version 14.6.10 (7331)

Test Date: 2019-08-13; Ambient Temp: 20.4; Tissue Temp: 20.6

Right Touch, Bluetooth Ch. 39, Ant Internal, Standard Battery

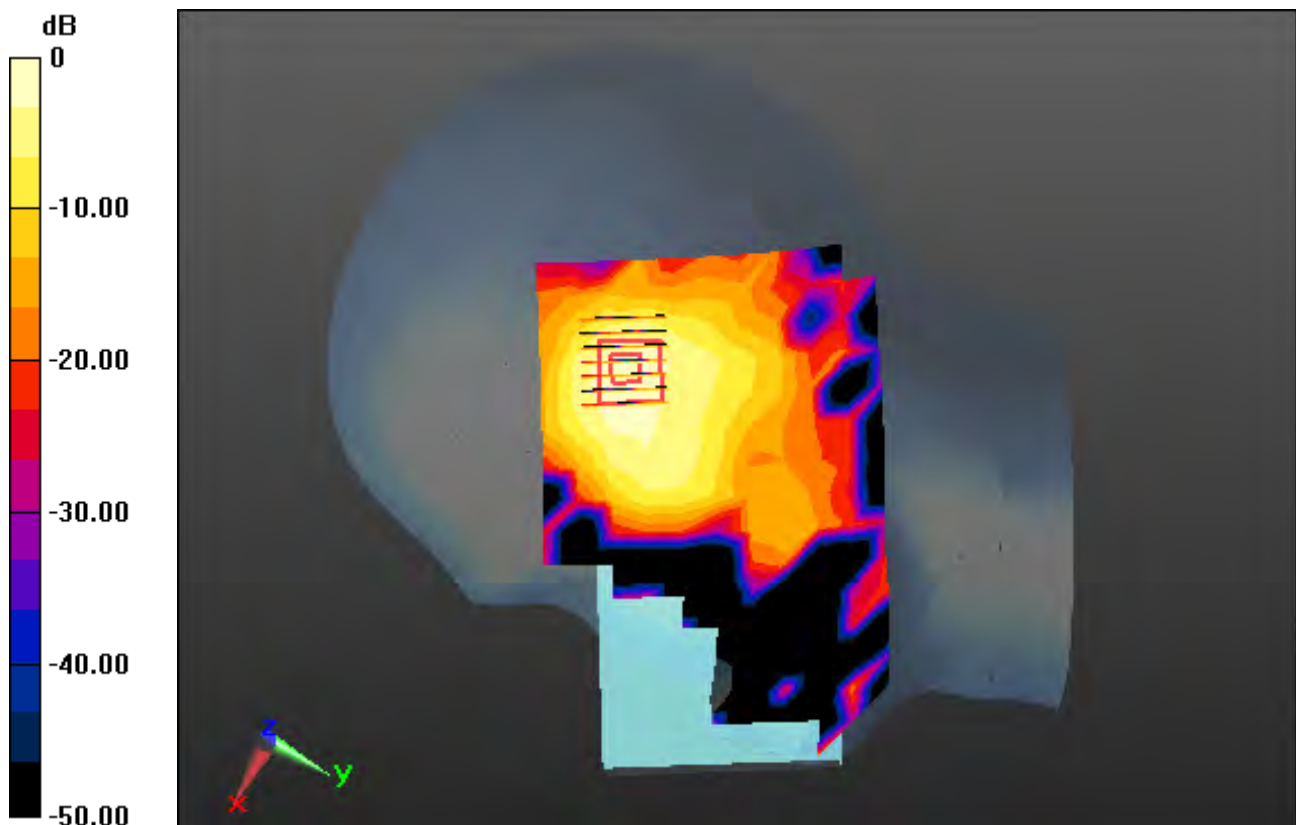
Area Scan (11x17x1): Measurement grid: dx=12mm, dy=12mm

Zoom Scan (7x7x7)/Cube 0: Measurement grid: dx=5mm, dy=5mm, dz=5mm

Power Drift = 0.11 dB

Peak SAR (extrapolated) = 0.0760 W/kg

SAR(1 g) = 0.036 W/kg; SAR(10 g) = 0.017 W/kg



0 dB = 0.0548 W/kg