

SAR Plots

- Verification Plots
- SAR Test Plots

DT&C Co., Ltd.

DUT: Dipole 2450 MHz; Type: D2450V2; Serial: D2450V2 - SN:920

Communication System: UID 0, CW (0); Frequency: 2450 MHz; Duty Cycle: 1:1
Medium parameters used: $f = 2450$ MHz; $\sigma = 1.853$ S/m; $\epsilon_r = 38.209$; $\rho = 1000$ kg/m³
Phantom section: Flat Section

DASY5 Configuration:

Probe: EX3DV4 - SN3866; ConvF(7.48, 7.48, 7.48); Calibrated: 5/31/2017; Electronics: DAE4 Sn1453
Sensor-Surface: 2mm (Mechanical Surface Detection)

Phantom: SAM-twin middle(20deg probe tilt)_2013_09_24; Type: QD000P40CD; Serial: 1782

Measurement SW: DASY52, Version 52.8 (8); SEMCAD X Version 14.6.10 (7331)

Test Date: 2017-07-17; Ambient Temp: 21.7; Tissue Temp: 21.4

2450 MHz System Verification

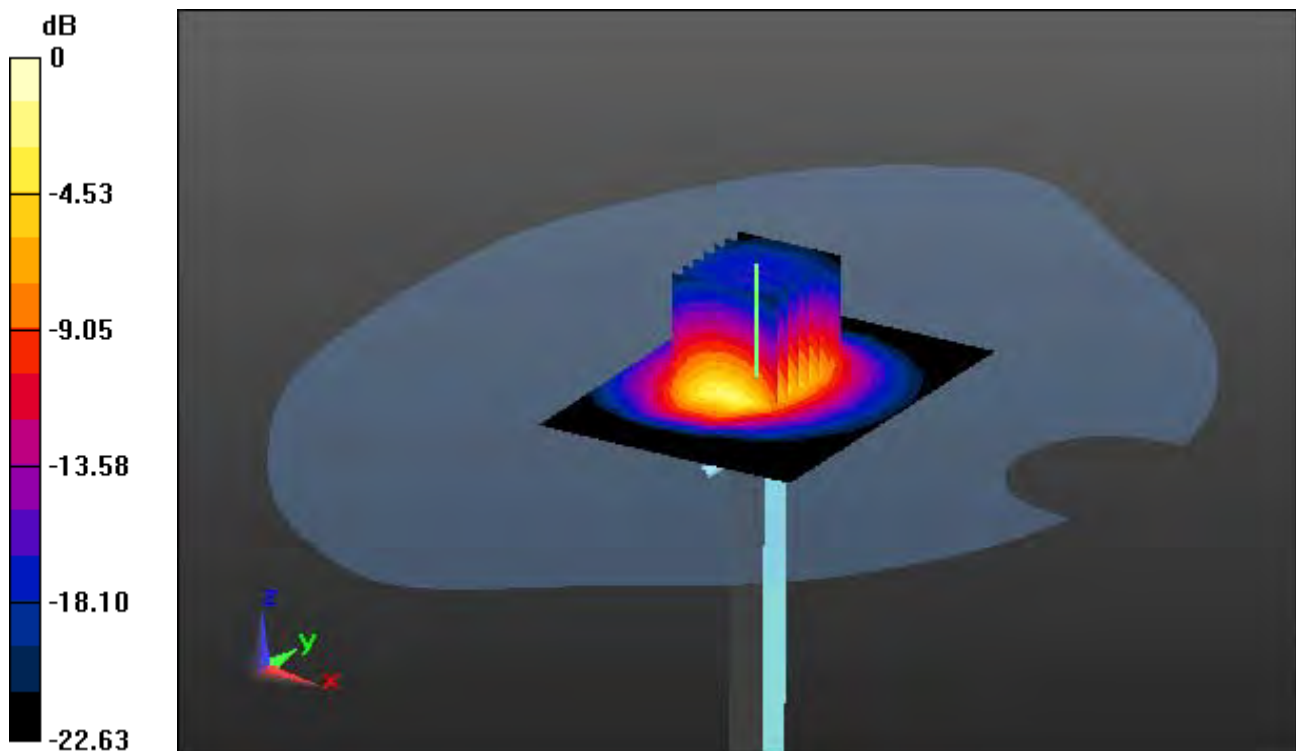
Area Scan (7x9x1): Measurement grid: dx=12mm, dy=12mm

Zoom Scan (7x7x7)/Cube 0: Measurement grid: dx=5mm, dy=5mm, dz=5mm

Power Drift = 0.04 dB

Peak SAR (extrapolated) = 27.9 W/kg

SAR(1 g) = 13.6 W/kg; SAR(10 g) = 6.29 W/kg



0 dB = 20.6 W/kg

DT&C Co., Ltd.

DUT: Dipole 2450 MHz; Type: D2450V2; Serial: D2450V2 - SN:920

Communication System: UID 0, CW (0); Frequency: 2450 MHz; Duty Cycle: 1:1
Medium parameters used: $f = 2450$ MHz; $\sigma = 1.853$ S/m; $\epsilon_r = 38.209$; $\rho = 1000$ kg/m³
Phantom section: Flat Section

DASY5 Configuration:

Probe: EX3DV4 - SN3866; ConvF(7.48, 7.48, 7.48); Calibrated: 5/31/2017; Electronics: DAE4 Sn1453
Sensor-Surface: 2mm (Mechanical Surface Detection)

Phantom: SAM-twin middle(20deg probe tilt)_2013_09_24; Type: QD000P40CD; Serial: 1782
Measurement SW: DASY52, Version 52.8 (8); SEMCAD X Version 14.6.10 (7331)

Test Date: 2017-07-17; Ambient Temp: 21.7; Tissue Temp: 21.4

2450 MHz System Verification

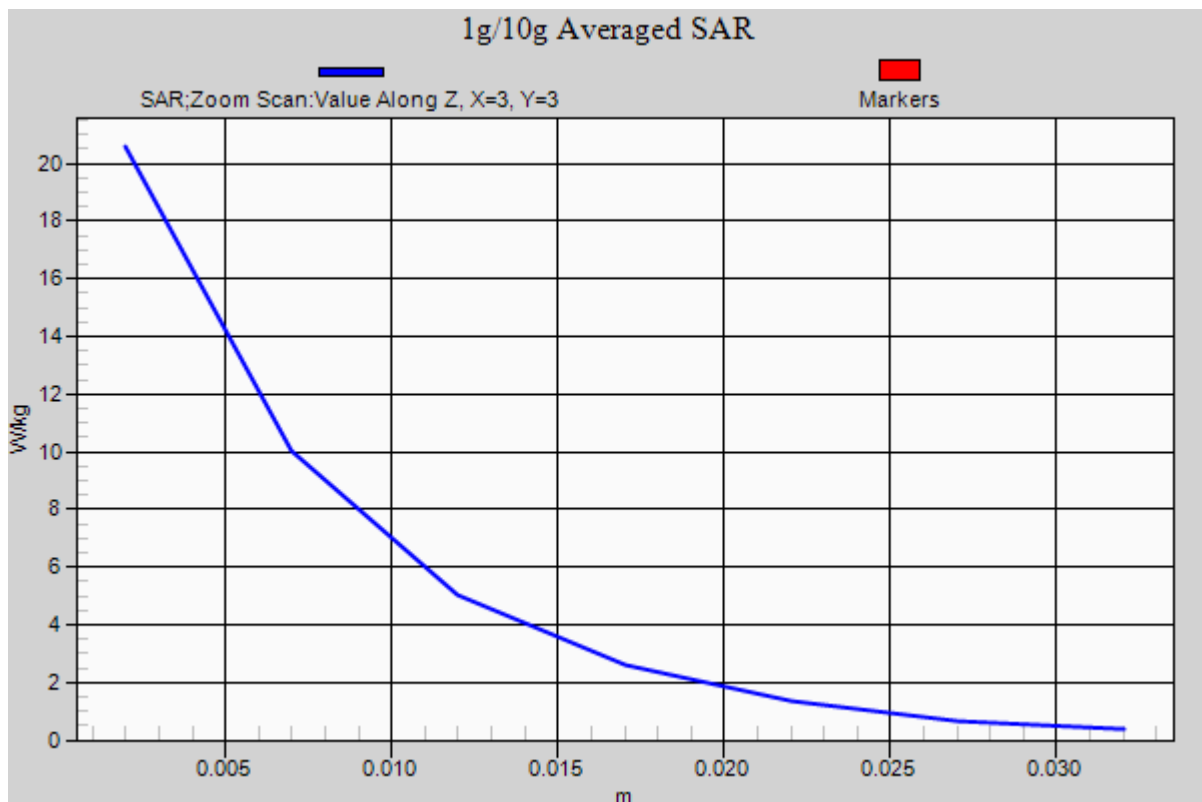
Area Scan (7x9x1): Measurement grid: dx=12mm, dy=12mm

Zoom Scan (7x7x7)/Cube 0: Measurement grid: dx=5mm, dy=5mm, dz=5mm

Power Drift = 0.04 dB

Peak SAR (extrapolated) = 27.9 W/kg

SAR(1 g) = 13.6 W/kg; SAR(10 g) = 6.29 W/kg



DT&C Co., Ltd.

DUT: Dipole 2450 MHz; Type: D2450V2; Serial: D2450V2 - SN:920

Communication System: UID 0, CW (0); Frequency: 2450 MHz; Duty Cycle: 1:1
Medium parameters used: $f = 2450$ MHz; $\sigma = 1.922$ S/m; $\epsilon_r = 51.871$; $\rho = 1000$ kg/m³
Phantom section: Flat Section

DASY5 Configuration:

Probe: EX3DV4 - SN3866; ConvF(7.56, 7.56, 7.56); Calibrated: 5/31/2017; Electronics: DAE4 Sn1453
Sensor-Surface: 2mm (Mechanical Surface Detection)

Phantom: SAM-twin middle(20deg probe tilt)_2013_09_24; Type: QD000P40CD; Serial: 1782

Measurement SW: DASY52, Version 52.8 (8); SEMCAD X Version 14.6.10 (7331)

Test Date: 2017-07-17; Ambient Temp: 21.7; Tissue Temp: 21.6

2450 MHz System Verification

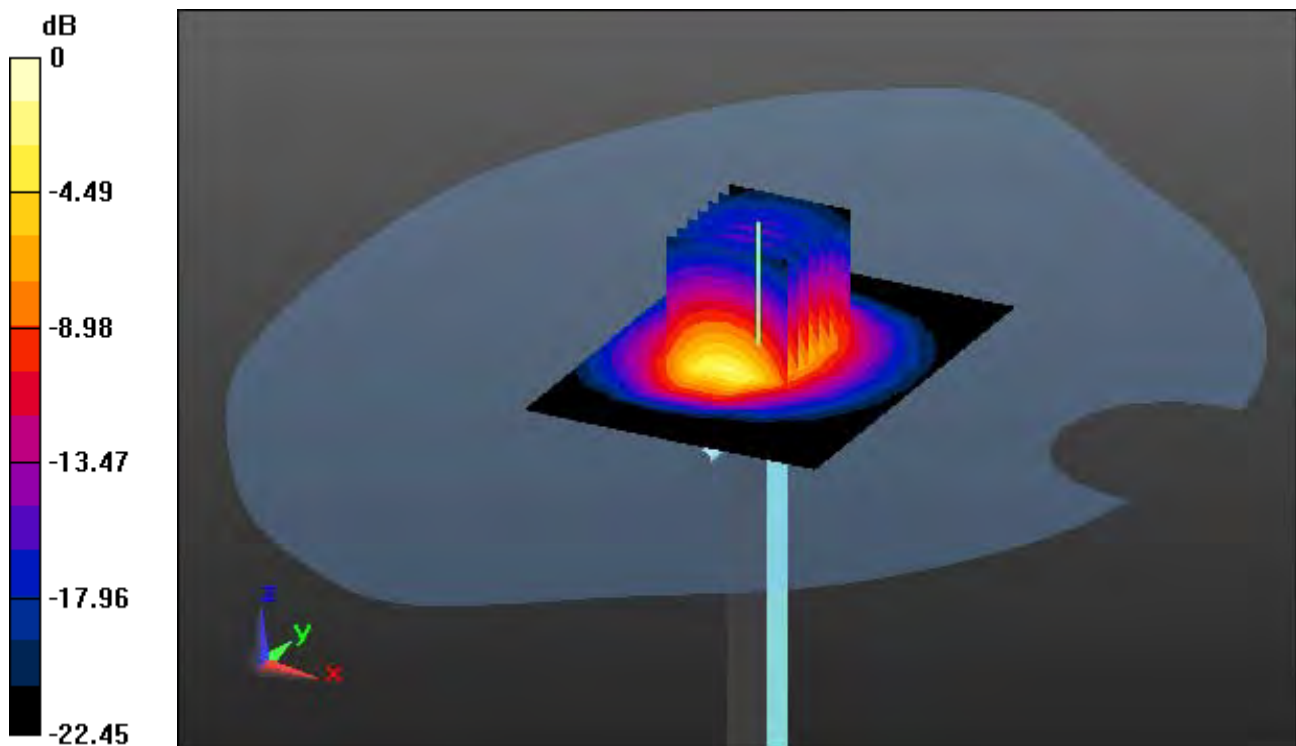
Area Scan (7x9x1): Measurement grid: dx=12mm, dy=12mm

Zoom Scan (7x7x7)/Cube 0: Measurement grid: dx=5mm, dy=5mm, dz=5mm

Power Drift = 0.06 dB

Peak SAR (extrapolated) = 26.3 W/kg

SAR(1 g) = 12.7 W/kg; SAR(10 g) = 5.85 W/kg



0 dB = 18.1 W/kg

DT&C Co., Ltd.

DUT: Dipole 2450 MHz; Type: D2450V2; Serial: D2450V2 - SN:920

Communication System: UID 0, CW (0); Frequency: 2450 MHz; Duty Cycle: 1:1
Medium parameters used: $f = 2450$ MHz; $\sigma = 1.922$ S/m; $\epsilon_r = 51.871$; $\rho = 1000$ kg/m³
Phantom section: Flat Section

DASY5 Configuration:

Probe: EX3DV4 - SN3866; ConvF(7.56, 7.56, 7.56); Calibrated: 5/31/2017; Electronics: DAE4 Sn1453
Sensor-Surface: 2mm (Mechanical Surface Detection)

Phantom: SAM-twin middle(20deg probe tilt)_2013_09_24; Type: QD000P40CD; Serial: 1782

Measurement SW: DASY52, Version 52.8 (8); SEMCAD X Version 14.6.10 (7331)

Test Date: 2017-07-17; Ambient Temp: 21.7; Tissue Temp: 21.6

2450 MHz System Verification

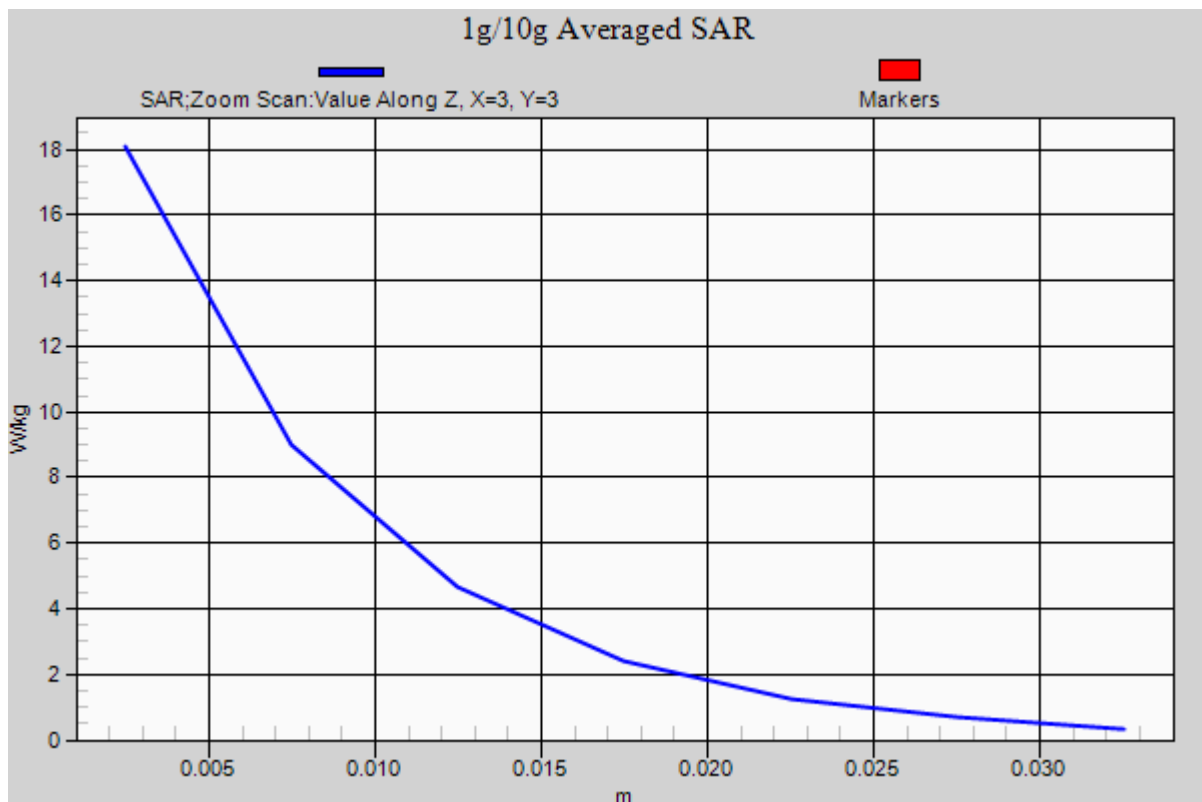
Area Scan (7x9x1): Measurement grid: dx=12mm, dy=12mm

Zoom Scan (7x7x7)/Cube 0: Measurement grid: dx=5mm, dy=5mm, dz=5mm

Power Drift = 0.06 dB

Peak SAR (extrapolated) = 26.3 W/kg

SAR(1 g) = 12.7 W/kg; SAR(10 g) = 5.85 W/kg



DT&C Co., Ltd.

DUT: Dipole 5000 MHz; Type: D5GHzV2; Serial: D5GHzV2 - SN:1103

Communication System: UID 0, CW (0); Frequency: 5300 MHz; Duty Cycle: 1:1
Medium parameters used: $f = 5300$ MHz; $\sigma = 4.905$ S/m; $\epsilon_r = 35.778$; $\rho = 1000$ kg/m³
Phantom section: Flat Section

DASY5 Configuration:

Probe: EX3DV4 - SN3916; ConvF(5.14, 5.14, 5.14); Calibrated: 4/28/2017; Electronics: DAE4 Sn1453
Sensor-Surface: 2mm (Mechanical Surface Detection)

Phantom: SAM-twin middle(20deg probe tilt)_2013_09_24; Type: QD000P40CD; Serial: 1782

Measurement SW: DASY52, Version 52.8 (8); SEMCAD X Version 14.6.10 (7331)

Test Date: 2017-07-18; Ambient Temp: 21.4; Tissue Temp: 21.3

5300 MHz System Verification

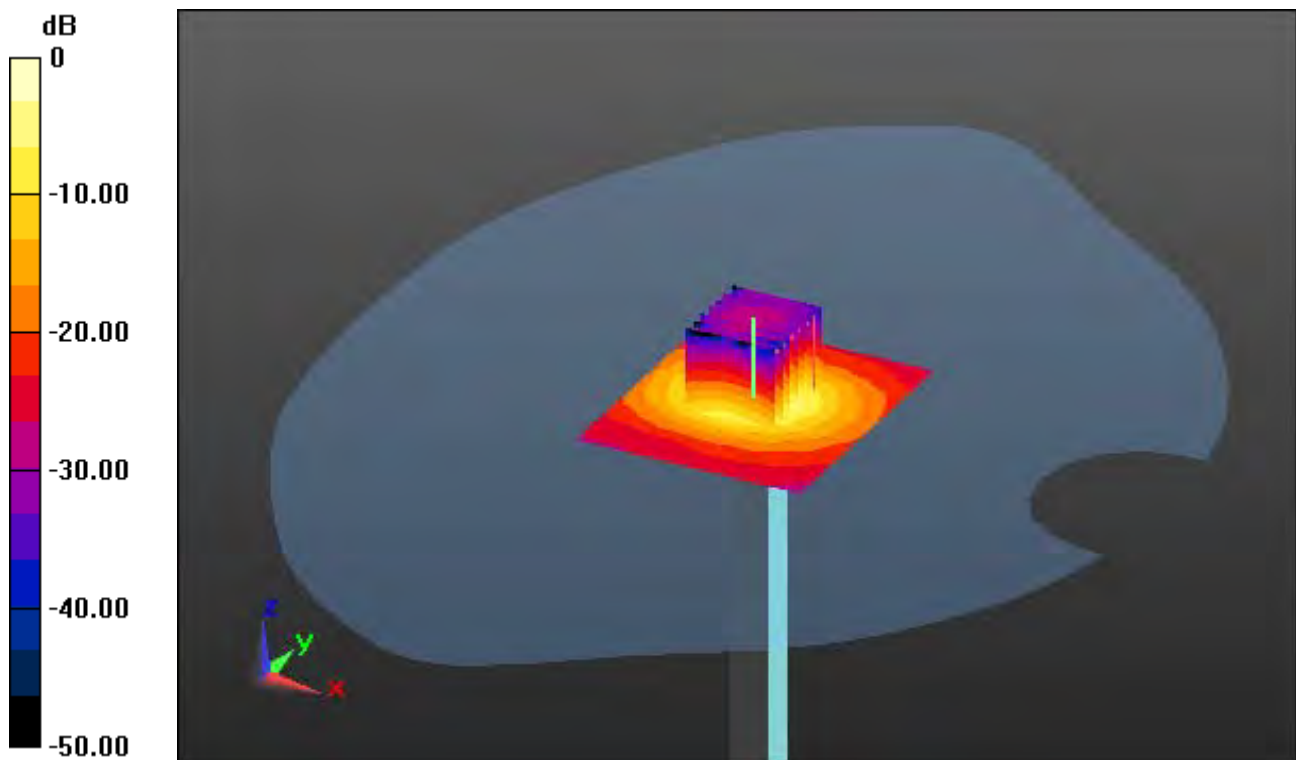
Area Scan (7x8x1): Measurement grid: dx=10mm, dy=10mm

Zoom Scan (7x7x12)/Cube 0: Measurement grid: dx=4mm, dy=4mm, dz=2mm

Power Drift = 0.08 dB

Peak SAR (extrapolated) = 34.5 W/kg

SAR(1 g) = 8.59 W/kg; SAR(10 g) = 2.48 W/kg



0 dB = 17.8 W/kg

DT&C Co., Ltd.

DUT: Dipole 5000 MHz; Type: D5GHzV2; Serial: D5GHzV2 - SN:1103

Communication System: UID 0, CW (0); Frequency: 5300 MHz; Duty Cycle: 1:1
Medium parameters used: $f = 5300$ MHz; $\sigma = 4.905$ S/m; $\epsilon_r = 35.778$; $\rho = 1000$ kg/m³
Phantom section: Flat Section

DASY5 Configuration:

Probe: EX3DV4 - SN3916; ConvF(5.14, 5.14, 5.14); Calibrated: 4/28/2017; Electronics: DAE4 Sn1453
Sensor-Surface: 2mm (Mechanical Surface Detection)

Phantom: SAM-twin middle(20deg probe tilt)_2013_09_24; Type: QD000P40CD; Serial: 1782

Measurement SW: DASY52, Version 52.8 (8); SEMCAD X Version 14.6.10 (7331)

Test Date: 2017-07-18; Ambient Temp: 21.4; Tissue Temp: 21.3

5300 MHz System Verification

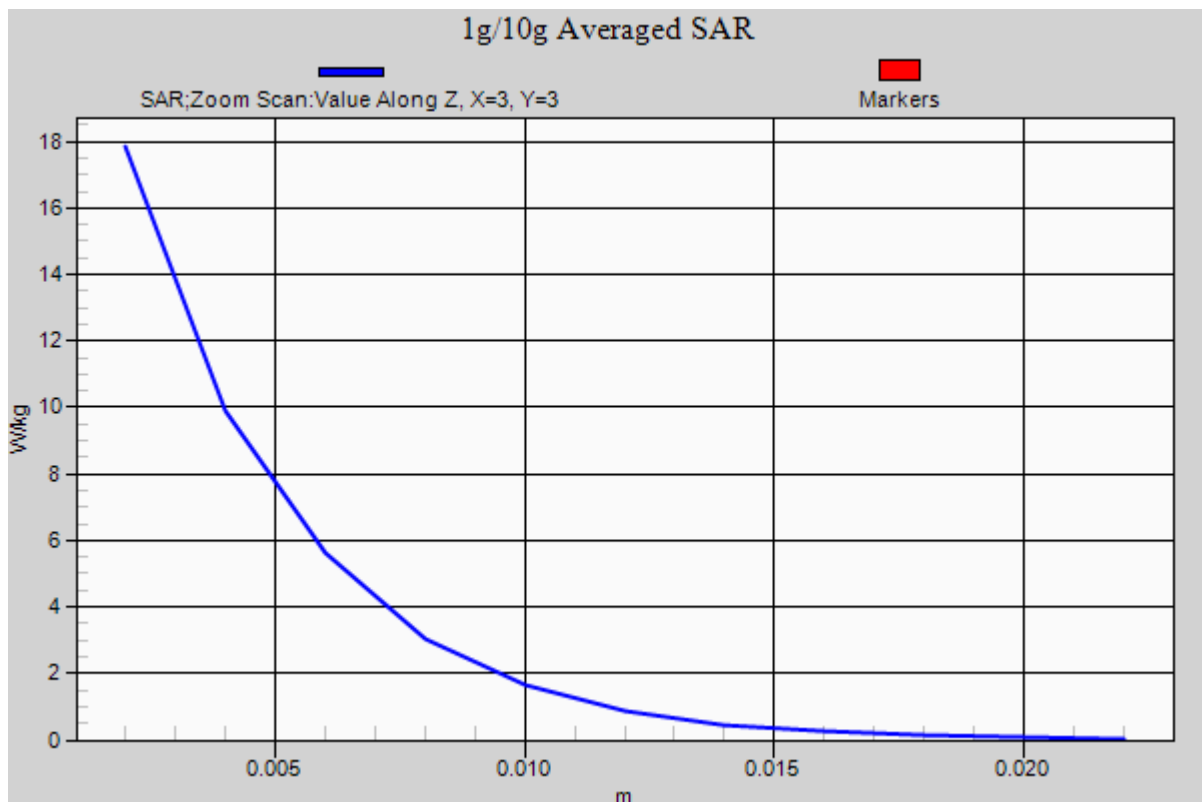
Area Scan (7x8x1): Measurement grid: dx=10mm, dy=10mm

Zoom Scan (7x7x12)/Cube 0: Measurement grid: dx=4mm, dy=4mm, dz=2mm

Power Drift = 0.08 dB

Peak SAR (extrapolated) = 34.5 W/kg

SAR(1 g) = 8.59 W/kg; SAR(10 g) = 2.48 W/kg



DT&C Co., Ltd.

DUT: Dipole 5000 MHz; Type: D5GHzV2; Serial: D5GHzV2 - SN:1103

Communication System: UID 0, CW (0); Frequency: 5300 MHz; Duty Cycle: 1:1
Medium parameters used: $f = 5300$ MHz; $\sigma = 5.302$ S/m; $\epsilon_r = 47.183$; $\rho = 1000$ kg/m³
Phantom section: Flat Section

DASY5 Configuration:

Probe: EX3DV4 - SN3916; ConvF(4.65, 4.65, 4.65); Calibrated: 4/28/2017; Electronics: DAE4 Sn1453
Sensor-Surface: 2mm (Mechanical Surface Detection)

Phantom: SAM-twin middle(20deg probe tilt)_2013_09_24; Type: QD000P40CD; Serial: 1782

Measurement SW: DASY52, Version 52.8 (8); SEMCAD X Version 14.6.10 (7331)

Test Date: 2017-07-18; Ambient Temp: 21.4; Tissue Temp: 21.1

5300 MHz System Verification

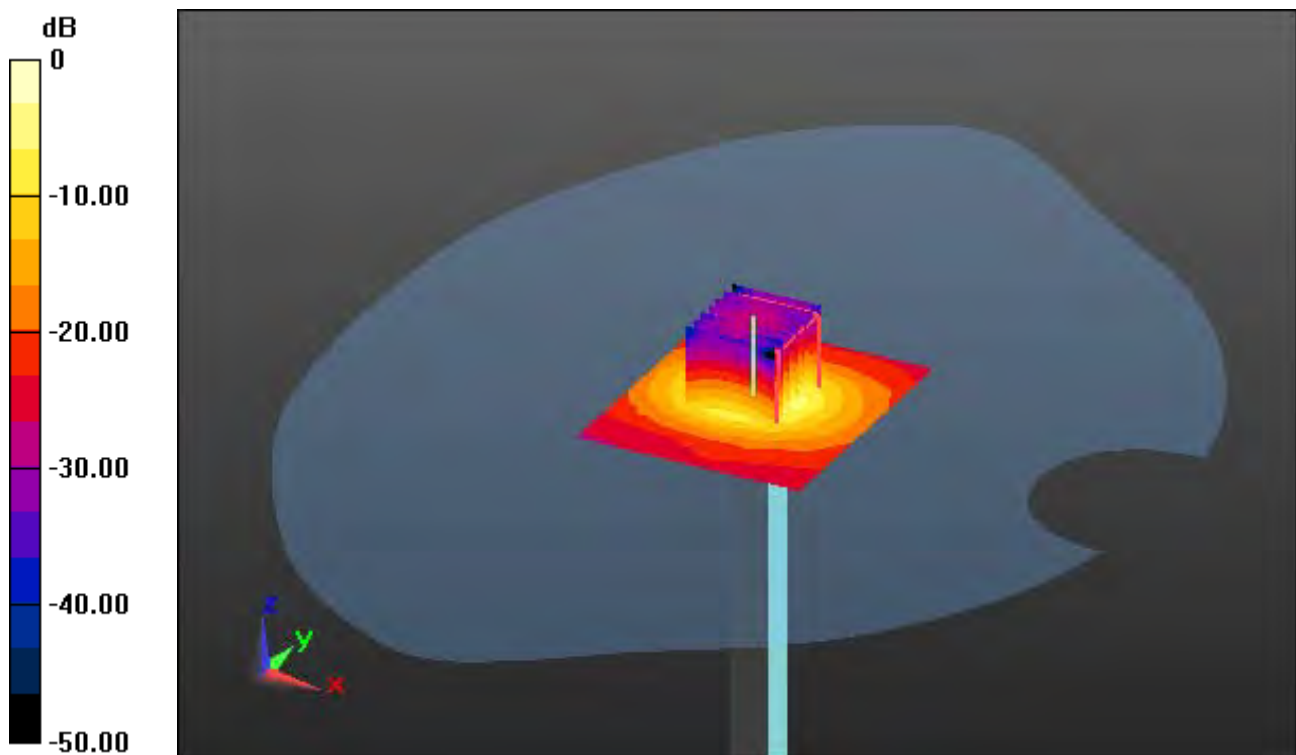
Area Scan (7x8x1): Measurement grid: dx=10mm, dy=10mm

Zoom Scan (7x7x12)/Cube 0: Measurement grid: dx=4mm, dy=4mm, dz=2mm

Power Drift = 0.12 dB

Peak SAR (extrapolated) = 31.1 W/kg

SAR(1 g) = 7.96 W/kg; SAR(10 g) = 2.3 W/kg



0 dB = 16.4 W/kg

DT&C Co., Ltd.

DUT: Dipole 5000 MHz; Type: D5GHzV2; Serial: D5GHzV2 - SN:1103

Communication System: UID 0, CW (0); Frequency: 5300 MHz; Duty Cycle: 1:1
Medium parameters used: $f = 5300$ MHz; $\sigma = 5.302$ S/m; $\epsilon_r = 47.183$; $\rho = 1000$ kg/m³
Phantom section: Flat Section

DASY5 Configuration:

Probe: EX3DV4 - SN3916; ConvF(4.65, 4.65, 4.65); Calibrated: 4/28/2017; Electronics: DAE4 Sn1453
Sensor-Surface: 2mm (Mechanical Surface Detection)

Phantom: SAM-twin middle(20deg probe tilt)_2013_09_24; Type: QD000P40CD; Serial: 1782

Measurement SW: DASY52, Version 52.8 (8); SEMCAD X Version 14.6.10 (7331)

Test Date: 2017-07-18; Ambient Temp: 21.4; Tissue Temp: 21.1

5300 MHz System Verification

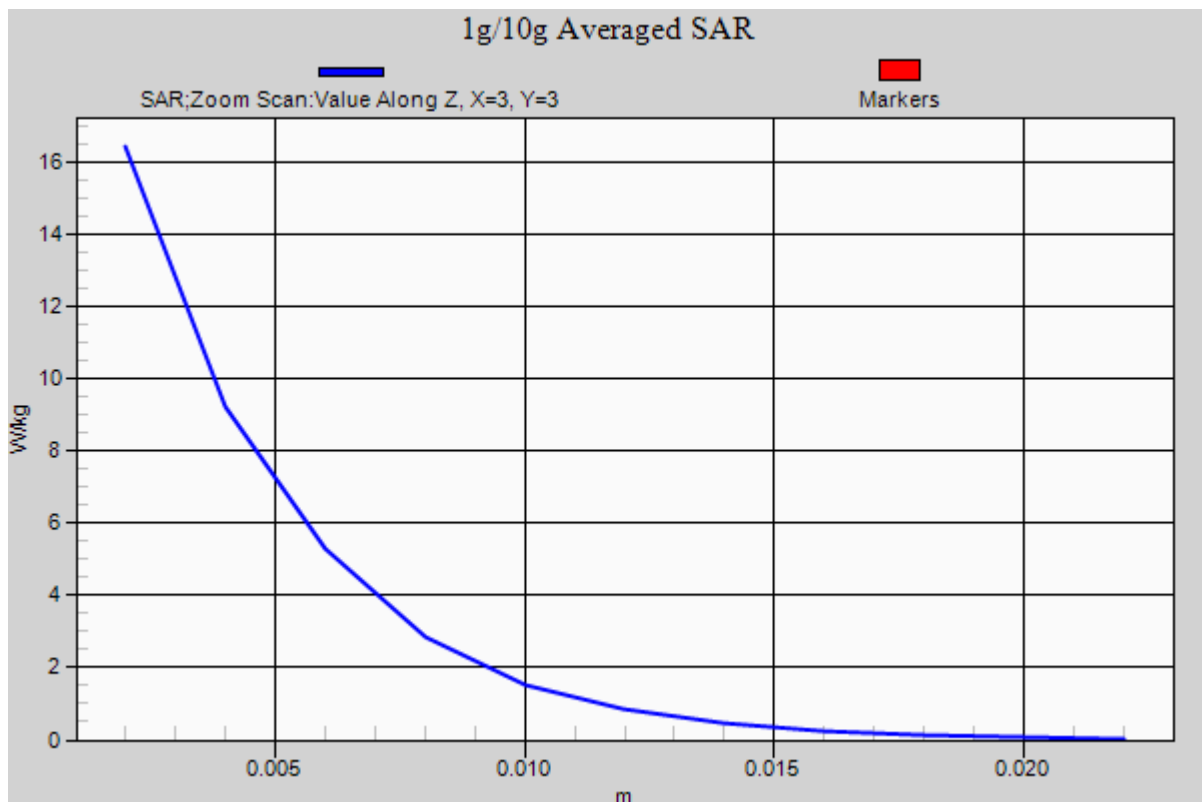
Area Scan (7x8x1): Measurement grid: dx=10mm, dy=10mm

Zoom Scan (7x7x12)/Cube 0: Measurement grid: dx=4mm, dy=4mm, dz=2mm

Power Drift = 0.12 dB

Peak SAR (extrapolated) = 31.1 W/kg

SAR(1 g) = 7.96 W/kg; SAR(10 g) = 2.3 W/kg



DT&C Co., Ltd.

DUT: Dipole 5000 MHz; Type: D5GHzV2; Serial: D5GHzV2 - SN:1103

Communication System: UID 0, CW (0); Frequency: 5600 MHz; Duty Cycle: 1:1
Medium parameters used: $f = 5600$ MHz; $\sigma = 5.203$ S/m; $\epsilon_r = 35.137$; $\rho = 1000$ kg/m³
Phantom section: Flat Section

DASY5 Configuration:

Probe: EX3DV4 - SN3916; ConvF(4.83, 4.83, 4.83); Calibrated: 4/28/2017; Electronics: DAE4 Sn1453
Sensor-Surface: 2mm (Mechanical Surface Detection)

Phantom: SAM-twin middle(20deg probe tilt)_2013_09_24; Type: QD000P40CD; Serial: 1782

Measurement SW: DASY52, Version 52.8 (8); SEMCAD X Version 14.6.10 (7331)

Test Date: 2017-07-19; Ambient Temp: 21.3; Tissue Temp: 21.0

5600 MHz System Verification

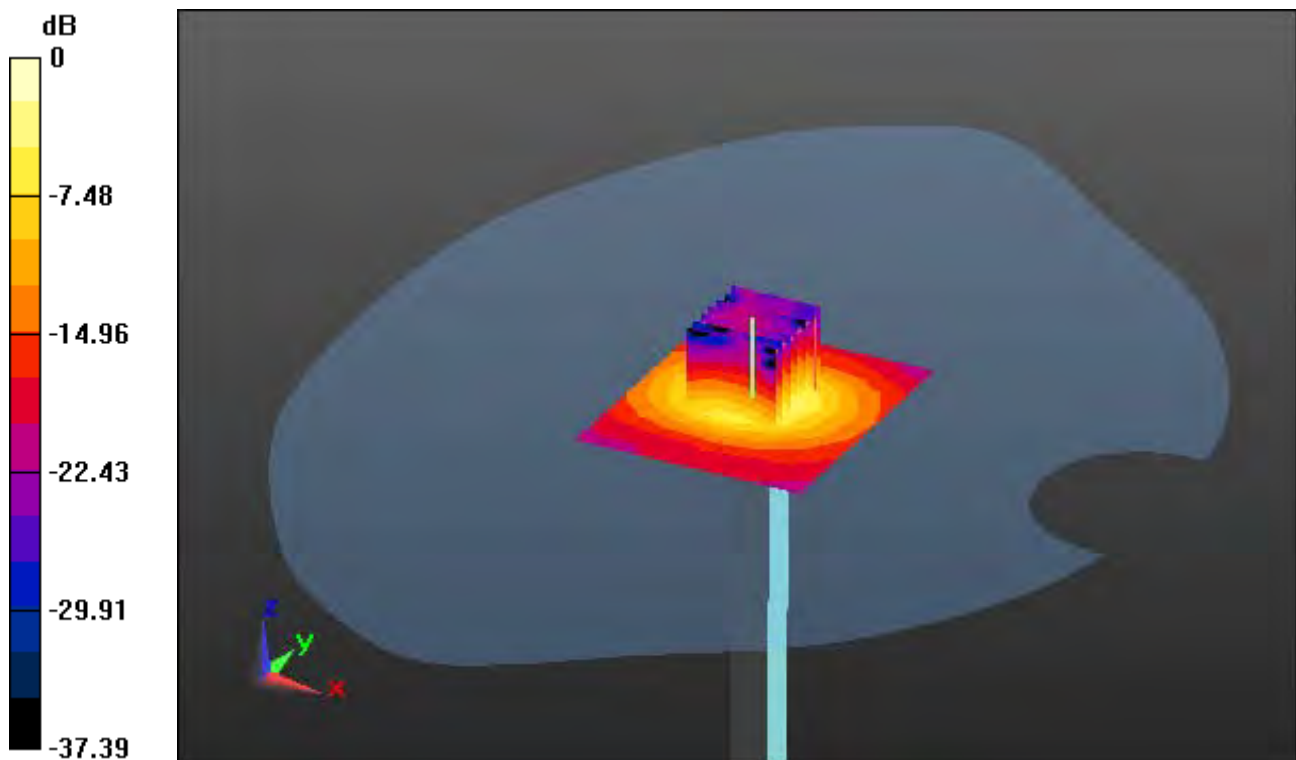
Area Scan (7x8x1): Measurement grid: dx=10mm, dy=10mm

Zoom Scan (7x7x12)/Cube 0: Measurement grid: dx=4mm, dy=4mm, dz=2mm

Power Drift = 0.10 dB

Peak SAR (extrapolated) = 33.1 W/kg

SAR(1 g) = 8.06 W/kg; SAR(10 g) = 2.31 W/kg



0 dB = 16.7 W/kg

DT&C Co., Ltd.

DUT: Dipole 5000 MHz; Type: D5GHzV2; Serial: D5GHzV2 - SN:1103

Communication System: UID 0, CW (0); Frequency: 5600 MHz; Duty Cycle: 1:1
Medium parameters used: $f = 5600$ MHz; $\sigma = 5.203$ S/m; $\epsilon_r = 35.137$; $\rho = 1000$ kg/m³
Phantom section: Flat Section

DASY5 Configuration:

Probe: EX3DV4 - SN3916; ConvF(4.83, 4.83, 4.83); Calibrated: 4/28/2017; Electronics: DAE4 Sn1453
Sensor-Surface: 2mm (Mechanical Surface Detection)

Phantom: SAM-twin middle(20deg probe tilt)_2013_09_24; Type: QD000P40CD; Serial: 1782

Measurement SW: DASY52, Version 52.8 (8); SEMCAD X Version 14.6.10 (7331)

Test Date: 2017-07-19; Ambient Temp: 21.3; Tissue Temp: 21.0

5600 MHz System Verification

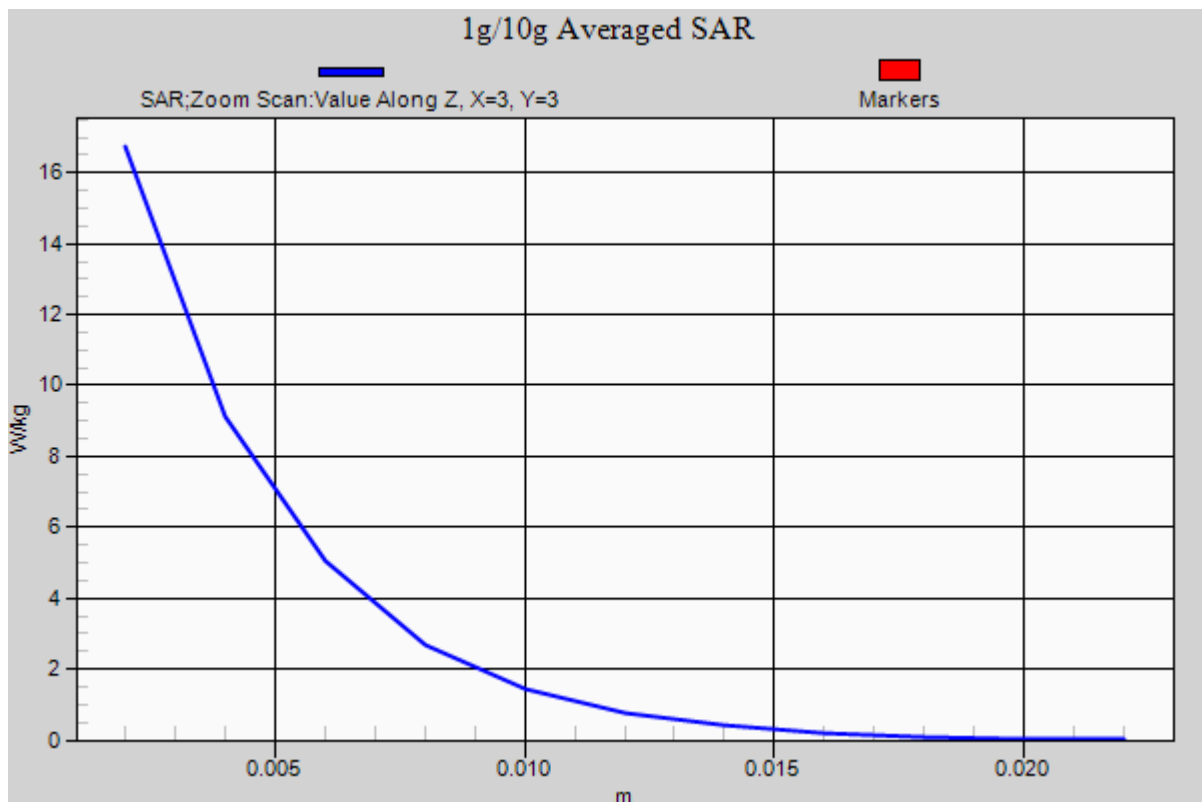
Area Scan (7x8x1): Measurement grid: dx=10mm, dy=10mm

Zoom Scan (7x7x12)/Cube 0: Measurement grid: dx=4mm, dy=4mm, dz=2mm

Power Drift = 0.10 dB

Peak SAR (extrapolated) = 33.1 W/kg

SAR(1 g) = 8.06 W/kg; SAR(10 g) = 2.31 W/kg



DT&C Co., Ltd.

DUT: Dipole 5000 MHz; Type: D5GHzV2; Serial: D5GHzV2 - SN:1103

Communication System: UID 0, CW (0); Frequency: 5600 MHz; Duty Cycle: 1:1
Medium parameters used: $f = 5600$ MHz; $\sigma = 5.716$ S/m; $\epsilon_r = 46.628$; $\rho = 1000$ kg/m³
Phantom section: Flat Section

DASY5 Configuration:

Probe: EX3DV4 - SN3916; ConvF(4.09, 4.09, 4.09); Calibrated: 4/28/2017; Electronics: DAE4 Sn1453
Sensor-Surface: 2mm (Mechanical Surface Detection)

Phantom: SAM-twin middle(20deg probe tilt)_2013_09_24; Type: QD000P40CD; Serial: 1782

Measurement SW: DASY52, Version 52.8 (8); SEMCAD X Version 14.6.10 (7331)

Test Date: 2017-07-18; Ambient Temp: 21.4; Tissue Temp: 21.1

5600 MHz System Verification

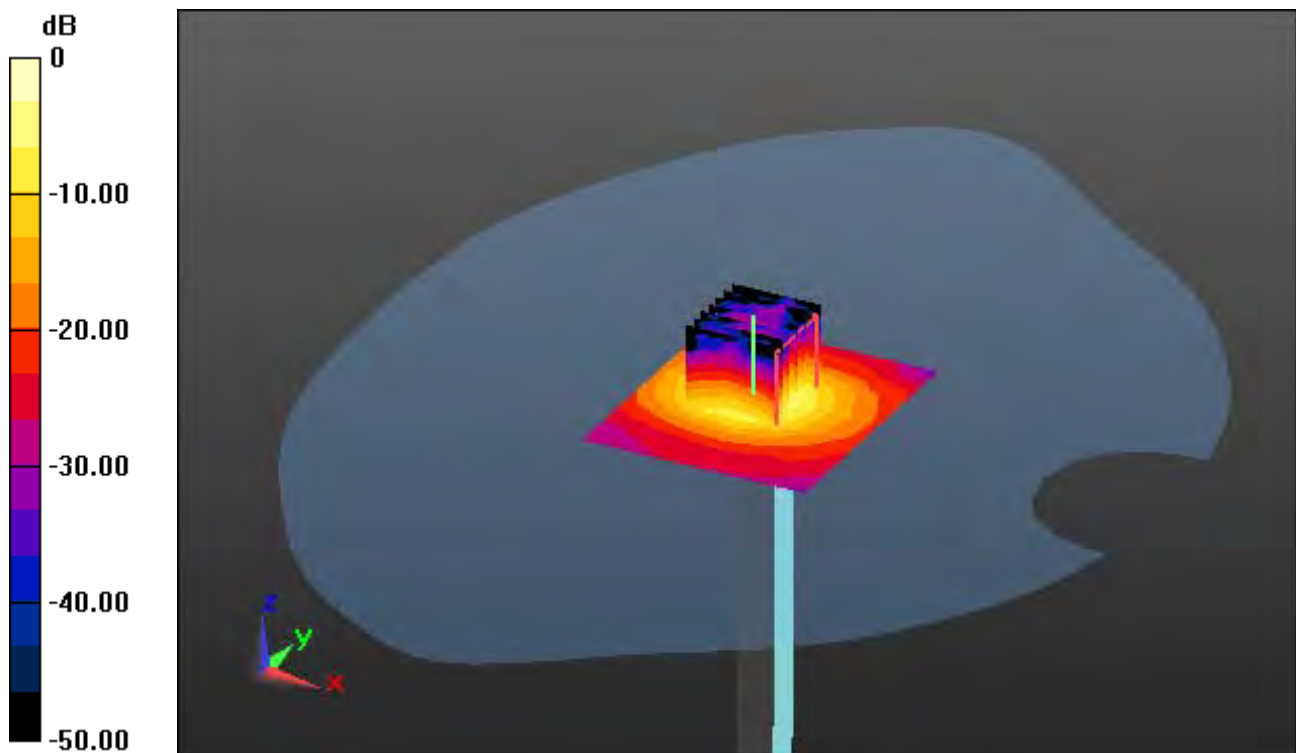
Area Scan (7x8x1): Measurement grid: dx=10mm, dy=10mm

Zoom Scan (7x7x12)/Cube 0: Measurement grid: dx=4mm, dy=4mm, dz=2mm

Power Drift = -0.05 dB

Peak SAR (extrapolated) = 29.3 W/kg

SAR(1 g) = 7.76 W/kg; SAR(10 g) = 2.25 W/kg



0 dB = 15.9 W/kg

DT&C Co., Ltd.

DUT: Dipole 5000 MHz; Type: D5GHzV2; Serial: D5GHzV2 - SN:1103

Communication System: UID 0, CW (0); Frequency: 5600 MHz; Duty Cycle: 1:1
Medium parameters used: $f = 5600$ MHz; $\sigma = 5.716$ S/m; $\epsilon_r = 46.628$; $\rho = 1000$ kg/m³
Phantom section: Flat Section

DASY5 Configuration:

Probe: EX3DV4 - SN3916; ConvF(4.09, 4.09, 4.09); Calibrated: 4/28/2017; Electronics: DAE4 Sn1453
Sensor-Surface: 2mm (Mechanical Surface Detection)

Phantom: SAM-twin middle(20deg probe tilt)_2013_09_24; Type: QD000P40CD; Serial: 1782

Measurement SW: DASY52, Version 52.8 (8); SEMCAD X Version 14.6.10 (7331)

Test Date: 2017-07-18; Ambient Temp: 21.4; Tissue Temp: 21.1

5600 MHz System Verification

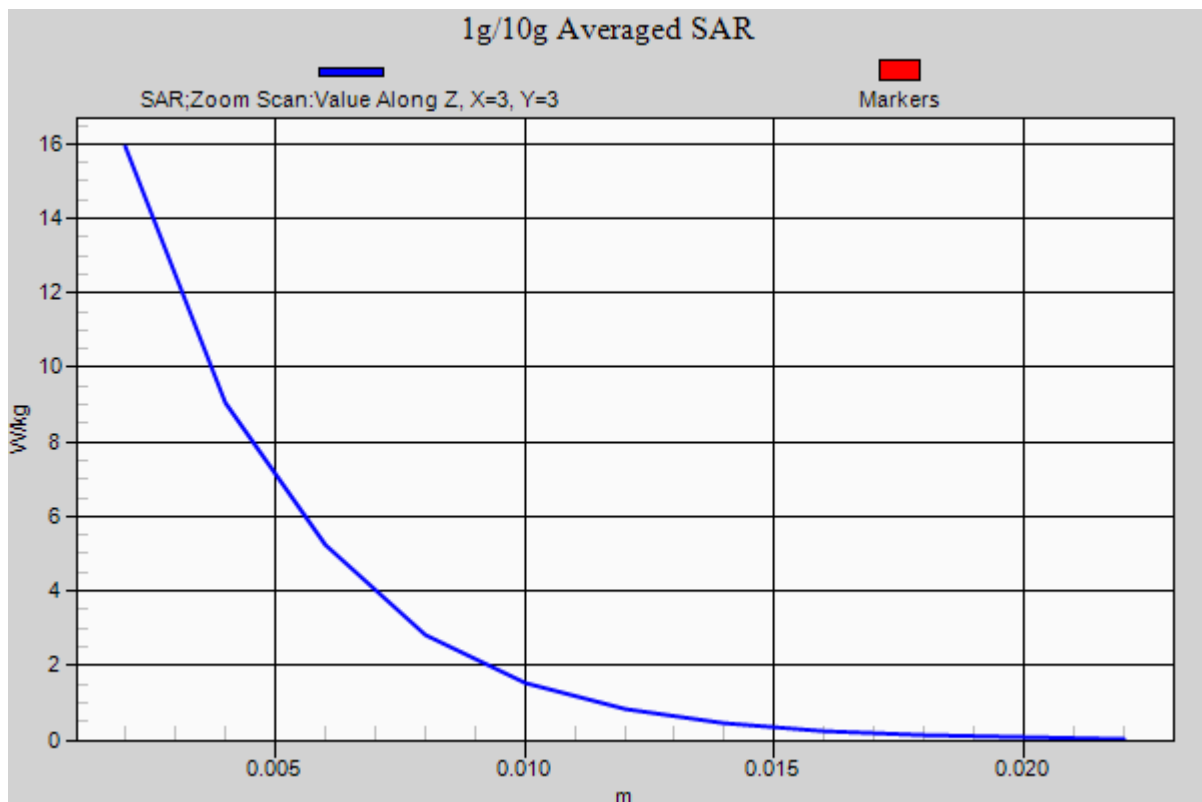
Area Scan (7x8x1): Measurement grid: dx=10mm, dy=10mm

Zoom Scan (7x7x12)/Cube 0: Measurement grid: dx=4mm, dy=4mm, dz=2mm

Power Drift = -0.05 dB

Peak SAR (extrapolated) = 29.3 W/kg

SAR(1 g) = 7.76 W/kg; SAR(10 g) = 2.25 W/kg



DT&C Co., Ltd.

DUT: Dipole 5000 MHz; Type: D5GHzV2; Serial: D5GHzV2 - SN:1103

Communication System: UID 0, CW (0); Frequency: 5800 MHz; Duty Cycle: 1:1
Medium parameters used: $f = 5800$ MHz; $\sigma = 5.32$ S/m; $\epsilon_r = 34.69$; $\rho = 1000$ kg/m³
Phantom section: Flat Section

DASY5 Configuration:

Probe: EX3DV4 - SN3916; ConvF(4.84, 4.84, 4.84); Calibrated: 4/28/2017; Electronics: DAE4 Sn1453
Sensor-Surface: 2mm (Mechanical Surface Detection)

Phantom: SAM-twin middle(20deg probe tilt)_2013_09_24; Type: QD000P40CD; Serial: 1782
Measurement SW: DASY52, Version 52.8 (8); SEMCAD X Version 14.6.10 (7331)

Test Date: 2017-07-20; Ambient Temp: 20.7; Tissue Temp: 20.5

5800 MHz System Verification

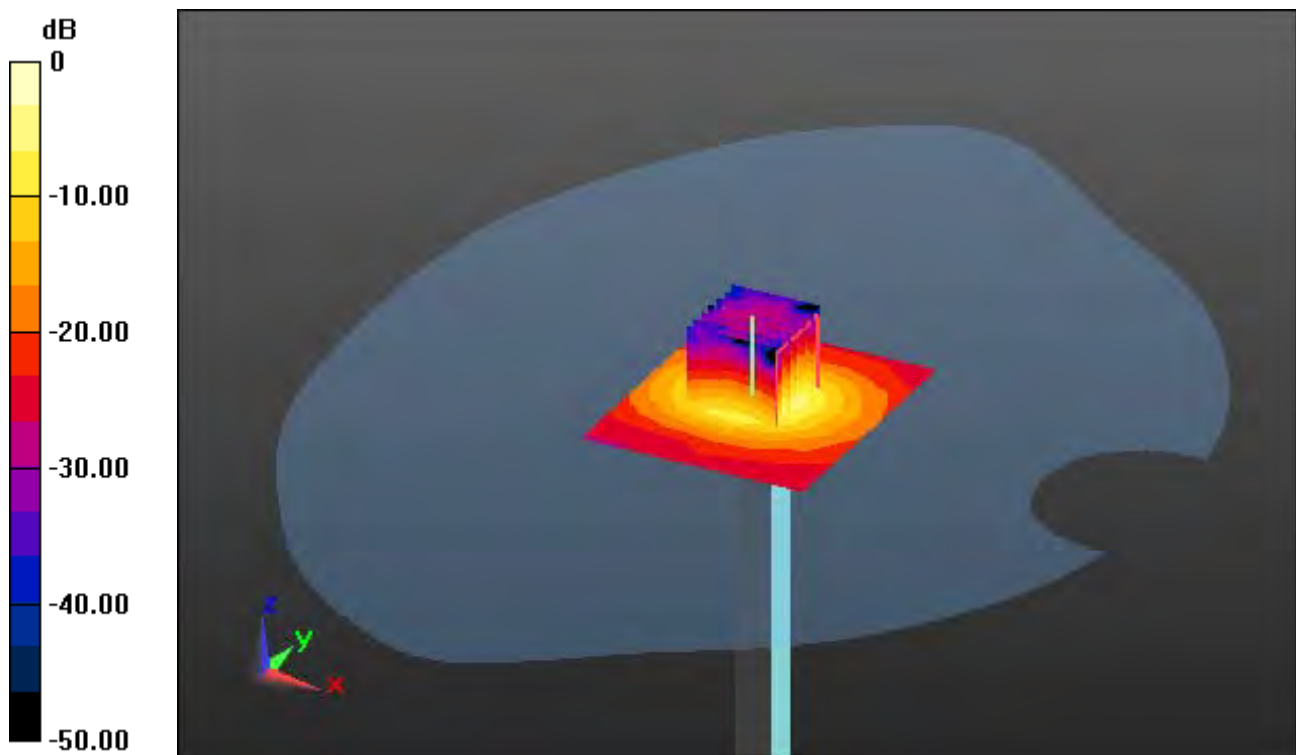
Area Scan (7x8x1): Measurement grid: dx=10mm, dy=10mm

Zoom Scan (7x7x12)/Cube 0: Measurement grid: dx=4mm, dy=4mm, dz=2mm

Power Drift = 0.08 dB

Peak SAR (extrapolated) = 30.1 W/kg

SAR(1 g) = 7.72 W/kg; SAR(10 g) = 2.23 W/kg



0 dB = 15.9 W/kg

DT&C Co., Ltd.

DUT: Dipole 5000 MHz; Type: D5GHzV2; Serial: D5GHzV2 - SN:1103

Communication System: UID 0, CW (0); Frequency: 5800 MHz; Duty Cycle: 1:1
Medium parameters used: $f = 5800$ MHz; $\sigma = 5.32$ S/m; $\epsilon_r = 34.69$; $\rho = 1000$ kg/m³
Phantom section: Flat Section

DASY5 Configuration:

Probe: EX3DV4 - SN3916; ConvF(4.84, 4.84, 4.84); Calibrated: 4/28/2017; Electronics: DAE4 Sn1453
Sensor-Surface: 2mm (Mechanical Surface Detection)

Phantom: SAM-twin middle(20deg probe tilt)_2013_09_24; Type: QD000P40CD; Serial: 1782

Measurement SW: DASY52, Version 52.8 (8); SEMCAD X Version 14.6.10 (7331)

Test Date: 2017-07-20; Ambient Temp: 20.7; Tissue Temp: 20.5

5800 MHz System Verification

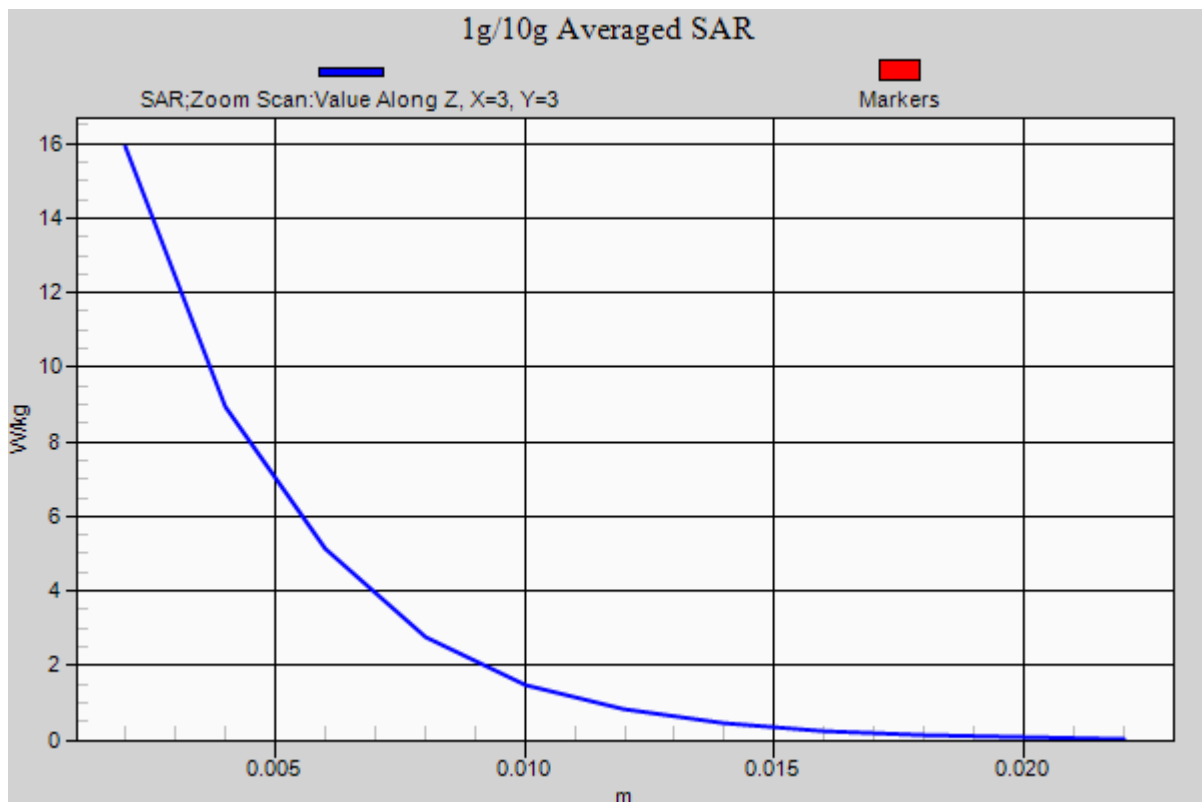
Area Scan (7x8x1): Measurement grid: dx=10mm, dy=10mm

Zoom Scan (7x7x12)/Cube 0: Measurement grid: dx=4mm, dy=4mm, dz=2mm

Power Drift = 0.08 dB

Peak SAR (extrapolated) = 30.1 W/kg

SAR(1 g) = 7.72 W/kg; SAR(10 g) = 2.23 W/kg



DT&C Co., Ltd.

DUT: Dipole 5000 MHz; Type: D5GHzV2; Serial: D5GHzV2 - SN:1103

Communication System: UID 0, CW (0); Frequency: 5800 MHz; Duty Cycle: 1:1
Medium parameters used: $f = 5800$ MHz; $\sigma = 5.986$ S/m; $\epsilon_r = 47.097$; $\rho = 1000$ kg/m³
Phantom section: Flat Section

DASY5 Configuration:

Probe: EX3DV4 - SN3916; ConvF(4.22, 4.22, 4.22); Calibrated: 4/28/2017; Electronics: DAE4 Sn1453
Sensor-Surface: 2mm (Mechanical Surface Detection)

Phantom: SAM-twin middle(20deg probe tilt)_2013_09_24; Type: QD000P40CD; Serial: 1782

Measurement SW: DASY52, Version 52.8 (8); SEMCAD X Version 14.6.10 (7331)

Test Date: 2017-07-20; Ambient Temp: 20.7; Tissue Temp: 20.6

5800 MHz System Verification

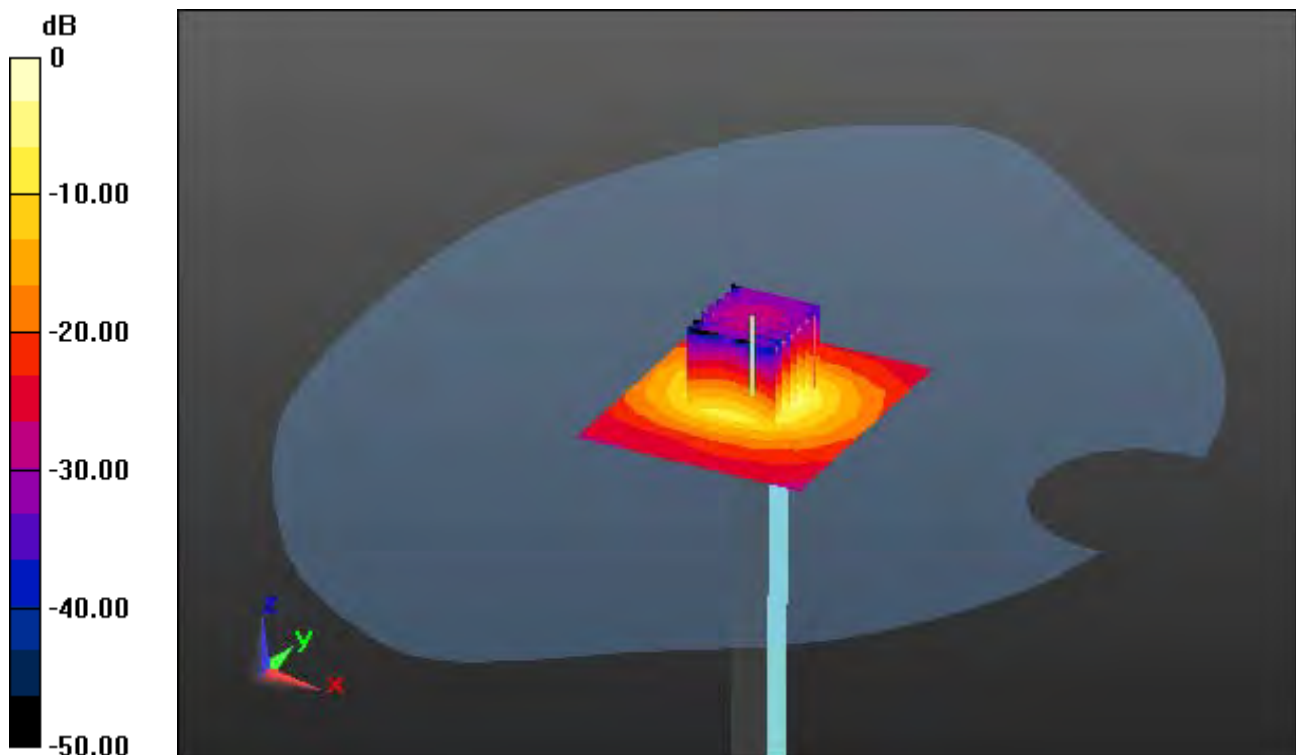
Area Scan (7x8x1): Measurement grid: dx=10mm, dy=10mm

Zoom Scan (7x7x12)/Cube 0: Measurement grid: dx=4mm, dy=4mm, dz=2mm

Power Drift = 0.09 dB

Peak SAR (extrapolated) = 28.3 W/kg

SAR(1 g) = 7.73 W/kg; SAR(10 g) = 2.24 W/kg



0 dB = 15.8 W/kg

DT&C Co., Ltd.

DUT: Dipole 5000 MHz; Type: D5GHzV2; Serial: D5GHzV2 - SN:1103

Communication System: UID 0, CW (0); Frequency: 5800 MHz; Duty Cycle: 1:1
Medium parameters used: $f = 5800$ MHz; $\sigma = 5.986$ S/m; $\epsilon_r = 47.097$; $\rho = 1000$ kg/m³
Phantom section: Flat Section

DASY5 Configuration:

Probe: EX3DV4 - SN3916; ConvF(4.22, 4.22, 4.22); Calibrated: 4/28/2017; Electronics: DAE4 Sn1453
Sensor-Surface: 2mm (Mechanical Surface Detection)

Phantom: SAM-twin middle(20deg probe tilt)_2013_09_24; Type: QD000P40CD; Serial: 1782

Measurement SW: DASY52, Version 52.8 (8); SEMCAD X Version 14.6.10 (7331)

Test Date: 2017-07-20; Ambient Temp: 20.7; Tissue Temp: 20.6

5800 MHz System Verification

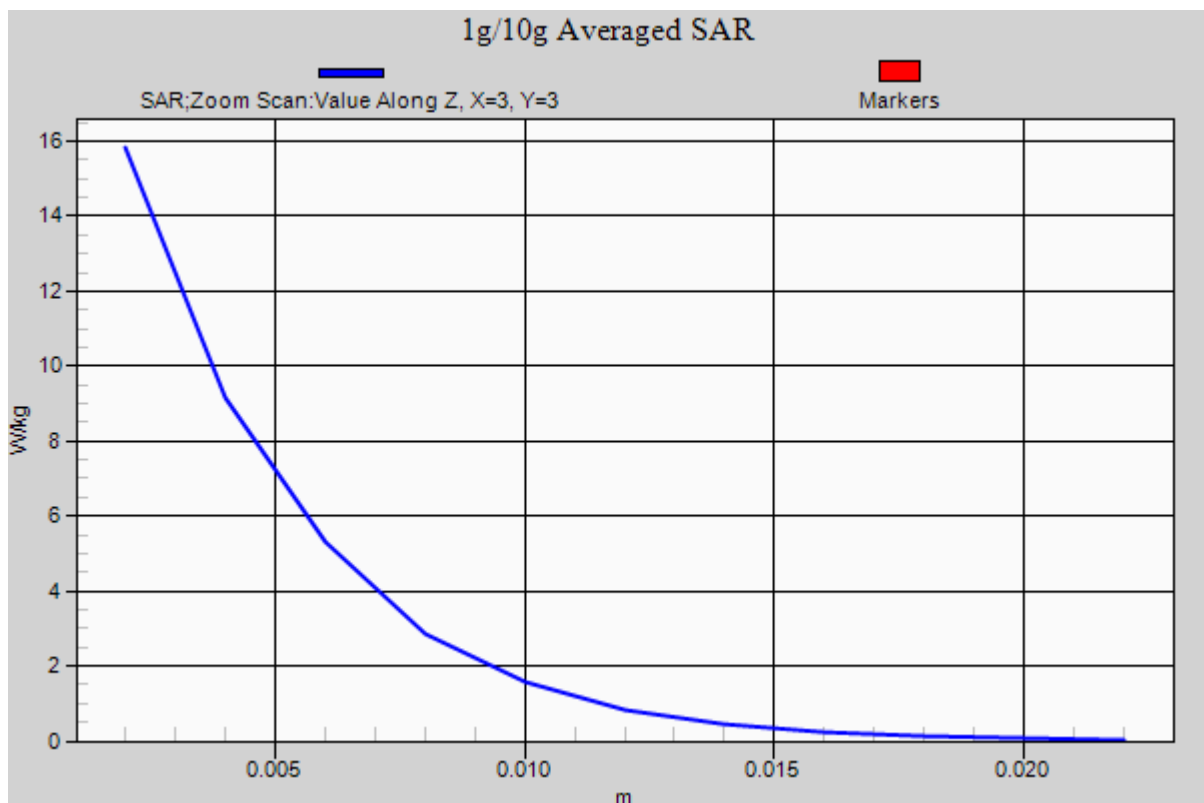
Area Scan (7x8x1): Measurement grid: dx=10mm, dy=10mm

Zoom Scan (7x7x12)/Cube 0: Measurement grid: dx=4mm, dy=4mm, dz=2mm

Power Drift = 0.09 dB

Peak SAR (extrapolated) = 28.3 W/kg

SAR(1 g) = 7.73 W/kg; SAR(10 g) = 2.24 W/kg



DT&C Co., Ltd.

DUT: PM70; Type: PDA

Communication System: UID 0, 2.4 GHz W-LAN (0); Frequency: 2462 MHz; Duty Cycle: 1:1
Medium parameters used: $f = 2462$ MHz; $\sigma = 1.866$ S/m; $\epsilon_r = 38.176$; $\rho = 1000$ kg/m³
Phantom section: Right Section

DASY5 Configuration:

Probe: EX3DV4 - SN3866; ConvF(7.48, 7.48, 7.48); Calibrated: 5/31/2017; Electronics: DAE4 Sn1453
Sensor-Surface: 2mm (Mechanical Surface Detection)
Phantom: SAM-twin middle(20deg probe tilt)_2013_09_24; Type: QD000P40CD; Serial: 1782
Measurement SW: DASY52, Version 52.8 (8); SEMCAD X Version 14.6.10 (7331)

Test Date: 2017-07-17; Ambient Temp: 21.7; Tissue Temp: 21.4

Right Touch, W-LAN(802.11b) Ch. 11, Ant Internal, Standard Battery

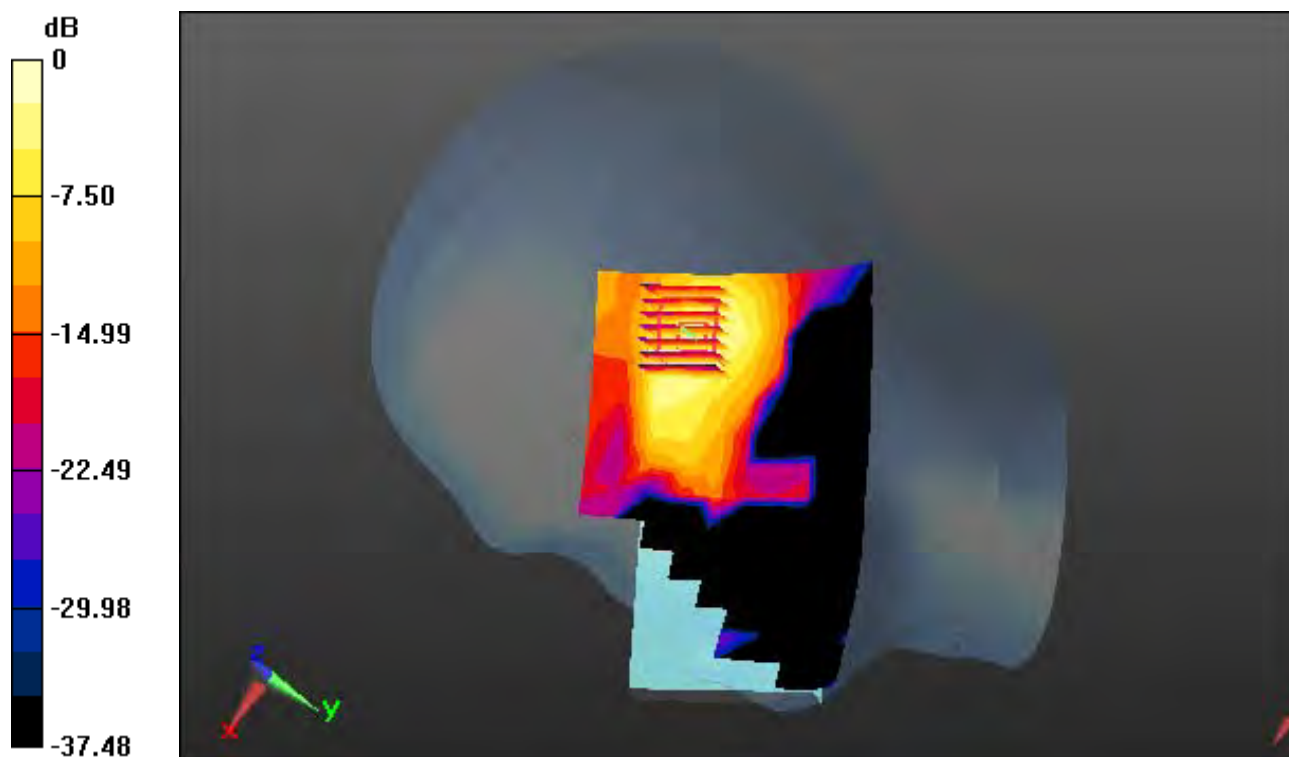
Area Scan (10x16x1): Measurement grid: dx=12mm, dy=12mm

Zoom Scan (7x7x7)/Cube 0: Measurement grid: dx=5mm, dy=5mm, dz=5mm

Power Drift = 0.02 dB

Peak SAR (extrapolated) = 0.357 W/kg

SAR(1 g) = 0.161 W/kg; SAR(10 g) = 0.075 W/kg



0 dB = 0.251 W/kg

DT&C Co., Ltd.

DUT: PM70; Type: PDA

Communication System: UID 0, 2.4 GHz W-LAN (0); Frequency: 2462 MHz; Duty Cycle: 1:1
Medium parameters used: $f = 2462$ MHz; $\sigma = 1.866$ S/m; $\epsilon_r = 38.176$; $\rho = 1000$ kg/m³
Phantom section: Right Section

DASY5 Configuration:

Probe: EX3DV4 - SN3866; ConvF(7.48, 7.48, 7.48); Calibrated: 5/31/2017; Electronics: DAE4 Sn1453
Sensor-Surface: 2mm (Mechanical Surface Detection)

Phantom: SAM-twin middle(20deg probe tilt)_2013_09_24; Type: QD000P40CD; Serial: 1782
Measurement SW: DASY52, Version 52.8 (8); SEMCAD X Version 14.6.10 (7331)

Test Date: 2017-07-17; Ambient Temp: 21.7; Tissue Temp: 21.4

Right Touch, W-LAN(802.11b) Ch. 11, Ant Internal, Standard Battery

With Enlarge Plot image

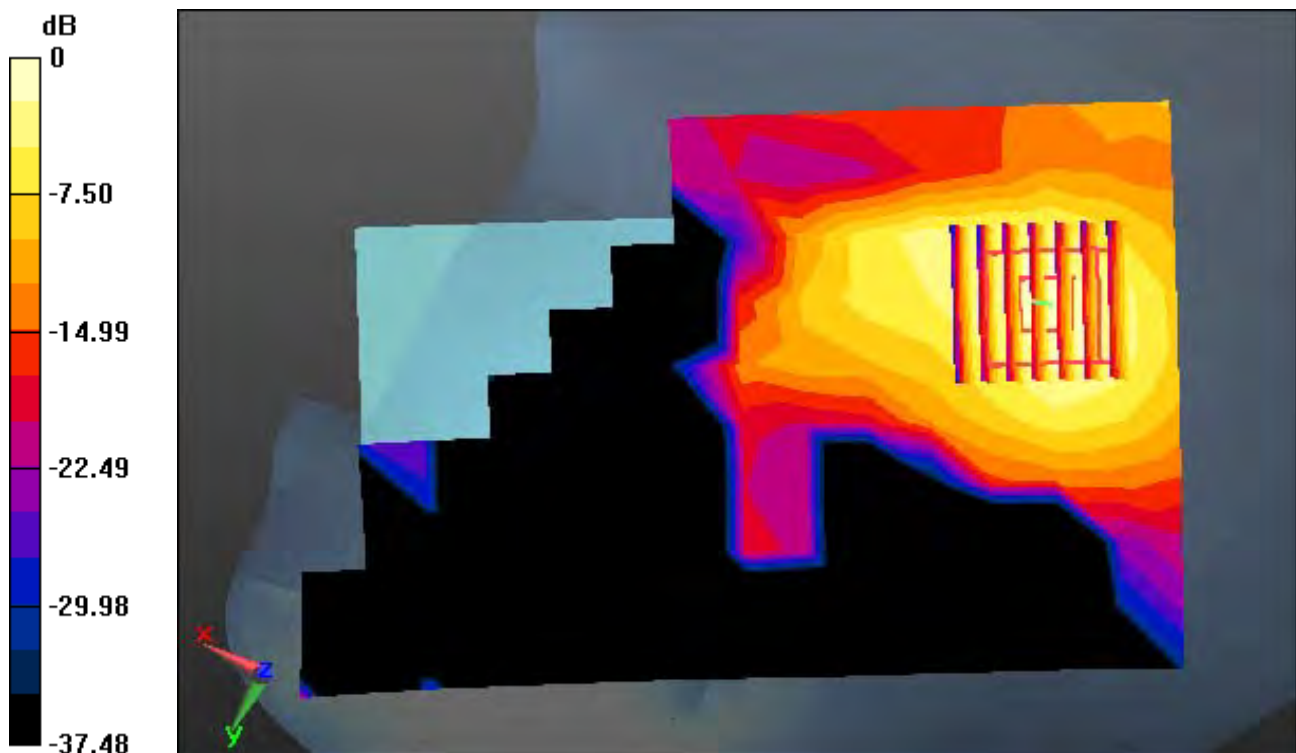
Area Scan (10x16x1): Measurement grid: dx=12mm, dy=12mm

Zoom Scan (7x7x7)/Cube 0: Measurement grid: dx=5mm, dy=5mm, dz=5mm

Power Drift = 0.02 dB

Peak SAR (extrapolated) = 0.357 W/kg

SAR(1 g) = 0.161 W/kg; SAR(10 g) = 0.075 W/kg



0 dB = 0.251 W/kg

DT&C Co., Ltd.

DUT: PM70; Type: PDA

Communication System: UID 0, 2.4 GHz W-LAN (0); Frequency: 2462 MHz; Duty Cycle: 1:1
Medium parameters used: $f = 2462$ MHz; $\sigma = 1.866$ S/m; $\epsilon_r = 38.176$; $\rho = 1000$ kg/m³
Phantom section: Right Section

DASY5 Configuration:

Probe: EX3DV4 - SN3866; ConvF(7.48, 7.48, 7.48); Calibrated: 5/31/2017; Electronics: DAE4 Sn1453
Sensor-Surface: 2mm (Mechanical Surface Detection)

Phantom: SAM-twin middle(20deg probe tilt)_2013_09_24; Type: QD000P40CD; Serial: 1782
Measurement SW: DASY52, Version 52.8 (8); SEMCAD X Version 14.6.10 (7331)

Test Date: 2017-07-17; Ambient Temp: 21.7; Tissue Temp: 21.4

Right Touch, W-LAN(802.11b) Ch. 11, Ant Internal, Standard Battery

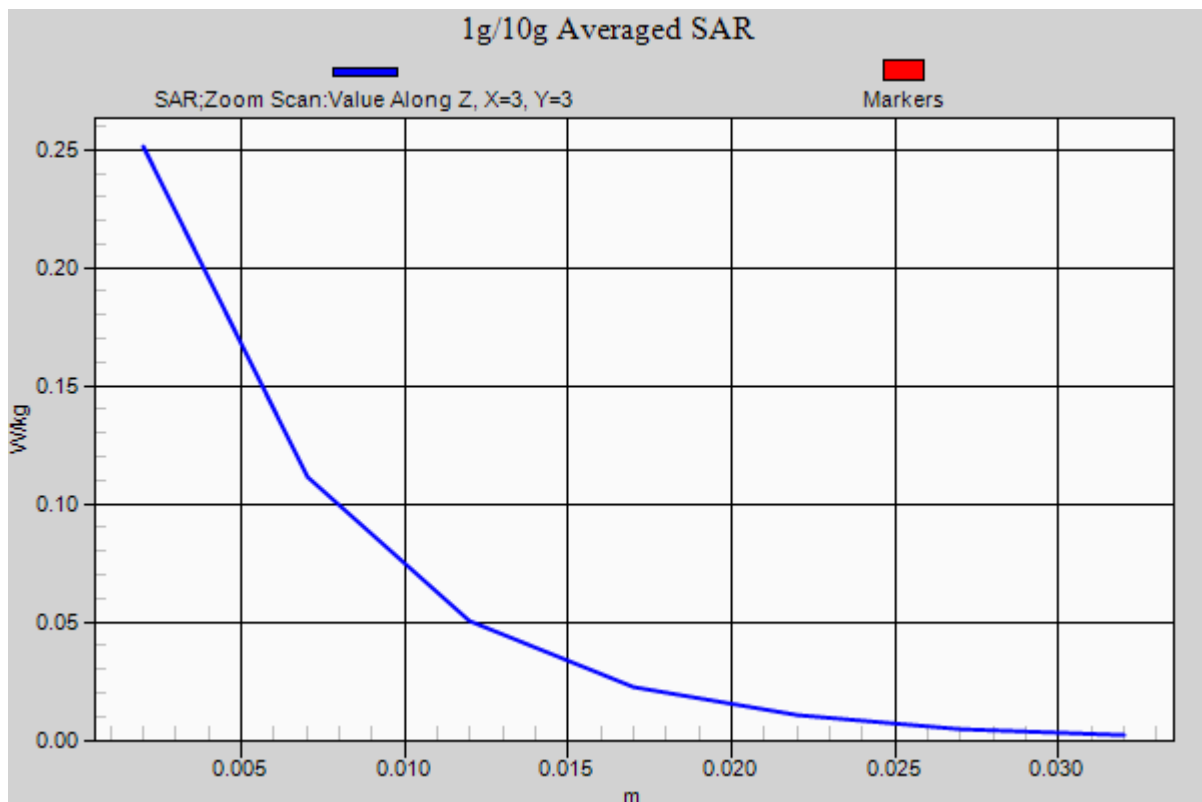
Area Scan (10x16x1): Measurement grid: dx=12mm, dy=12mm

Zoom Scan (7x7x7)/Cube 0: Measurement grid: dx=5mm, dy=5mm, dz=5mm

Power Drift = 0.02 dB

Peak SAR (extrapolated) = 0.357 W/kg

SAR(1 g) = 0.161 W/kg; SAR(10 g) = 0.075 W/kg



DT&C Co., Ltd.

DUT: PM70; Type: PDA

Communication System: UID 0, W-LAN_5 GHz(FCC) (0); Frequency: 5300 MHz; Duty Cycle: 1:1
Medium parameters used: $f = 5300$ MHz; $\sigma = 4.905$ S/m; $\epsilon_r = 35.778$; $\rho = 1000$ kg/m³
Phantom section: Right Section

DASY5 Configuration:

Probe: EX3DV4 - SN3916; ConvF(5.14, 5.14, 5.14); Calibrated: 4/28/2017; Electronics: DAE4 Sn1453
Sensor-Surface: 2mm (Mechanical Surface Detection)

Phantom: SAM-twin middle(20deg probe tilt)_2013_09_24; Type: QD000P40CD; Serial: 1782
Measurement SW: DASY52, Version 52.8 (8); SEMCAD X Version 14.6.10 (7331)

Test Date: 2017-07-18; Ambient Temp: 21.4; Tissue Temp: 21.3

Right Touch, W-LAN(802.11a) Ch. 60, Ant Internal, Standard Battery

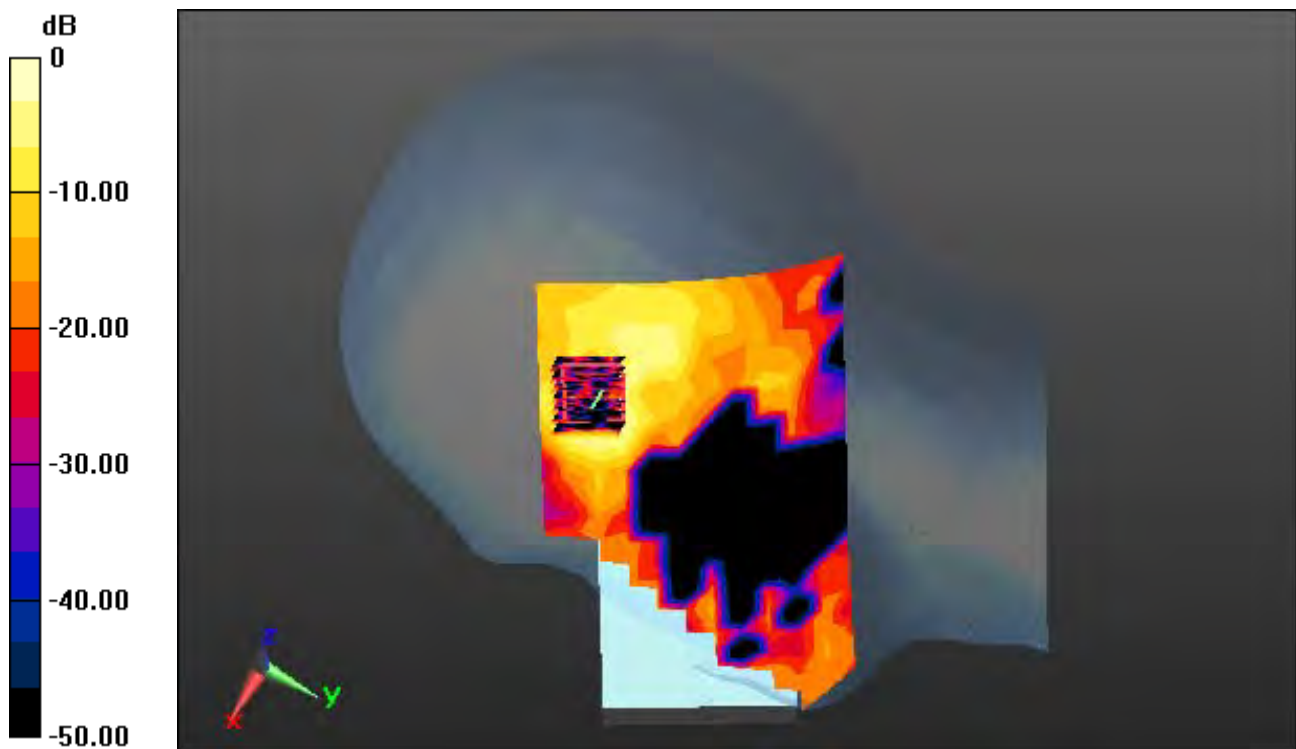
Area Scan (12x19x1): Measurement grid: dx=10mm, dy=10mm

Zoom Scan (7x7x12)/Cube 0: Measurement grid: dx=4mm, dy=4mm, dz=2mm

Power Drift = 0.05 dB

Peak SAR (extrapolated) = 0.588 W/kg

SAR(1 g) = 0.148 W/kg; SAR(10 g) = 0.043 W/kg



0 dB = 0.312 W/kg

DT&C Co., Ltd.

DUT: PM70; Type: PDA

Communication System: UID 0, W-LAN_5 GHz(FCC) (0); Frequency: 5300 MHz; Duty Cycle: 1:1
Medium parameters used: $f = 5300$ MHz; $\sigma = 4.905$ S/m; $\epsilon_r = 35.778$; $\rho = 1000$ kg/m³
Phantom section: Right Section

DASY5 Configuration:

Probe: EX3DV4 - SN3916; ConvF(5.14, 5.14, 5.14); Calibrated: 4/28/2017; Electronics: DAE4 Sn1453
Sensor-Surface: 2mm (Mechanical Surface Detection)

Phantom: SAM-twin middle(20deg probe tilt)_2013_09_24; Type: QD000P40CD; Serial: 1782
Measurement SW: DASY52, Version 52.8 (8); SEMCAD X Version 14.6.10 (7331)

Test Date: 2017-07-18; Ambient Temp: 21.4; Tissue Temp: 21.3

Right Touch, W-LAN(802.11a) Ch. 60, Ant Internal, Standard Battery

With Enlarge Plot image

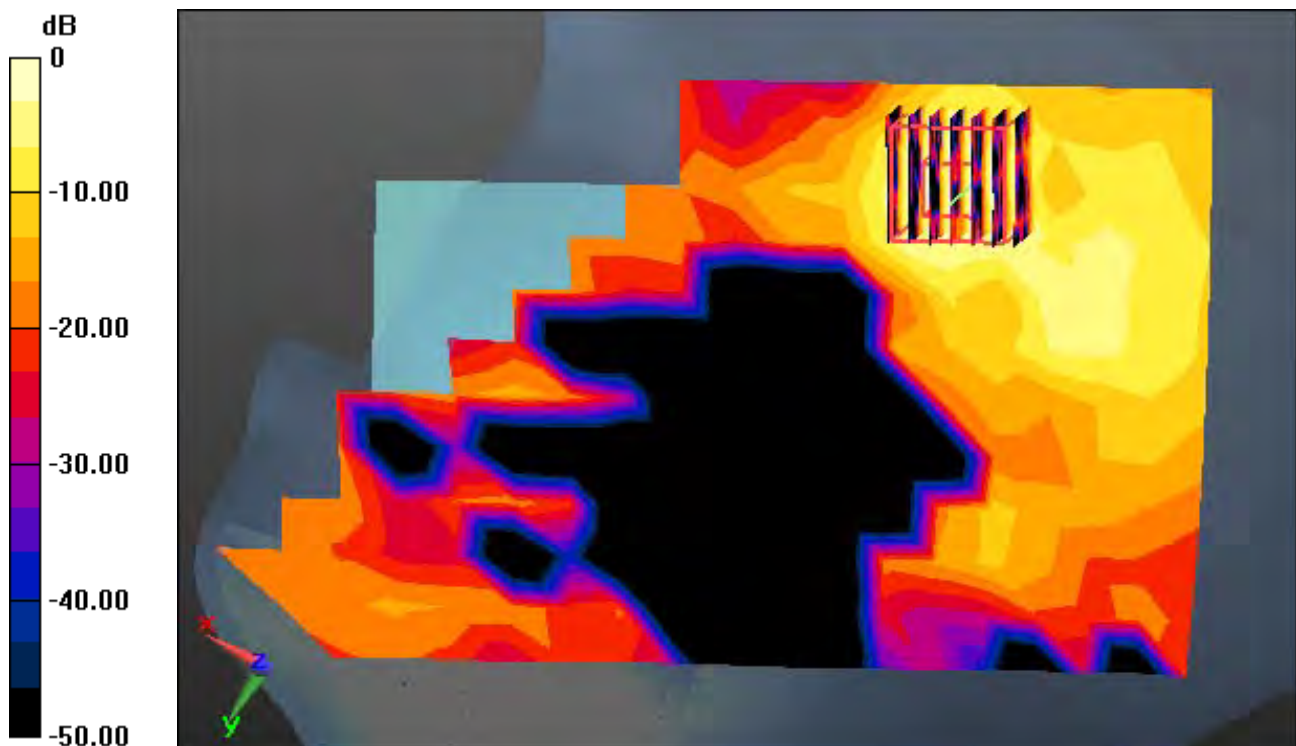
Area Scan (12x19x1): Measurement grid: dx=10mm, dy=10mm

Zoom Scan (7x7x12)/Cube 0: Measurement grid: dx=4mm, dy=4mm, dz=2mm

Power Drift = 0.05 dB

Peak SAR (extrapolated) = 0.588 W/kg

SAR(1 g) = 0.148 W/kg; SAR(10 g) = 0.043 W/kg



0 dB = 0.312 W/kg

DT&C Co., Ltd.

DUT: PM70; Type: PDA

Communication System: UID 0, W-LAN_5 GHz(FCC) (0); Frequency: 5300 MHz; Duty Cycle: 1:1
Medium parameters used: $f = 5300$ MHz; $\sigma = 4.905$ S/m; $\epsilon_r = 35.778$; $\rho = 1000$ kg/m³
Phantom section: Right Section

DASY5 Configuration:

Probe: EX3DV4 - SN3916; ConvF(5.14, 5.14, 5.14); Calibrated: 4/28/2017; Electronics: DAE4 Sn1453
Sensor-Surface: 2mm (Mechanical Surface Detection)

Phantom: SAM-twin middle(20deg probe tilt)_2013_09_24; Type: QD000P40CD; Serial: 1782
Measurement SW: DASY52, Version 52.8 (8); SEMCAD X Version 14.6.10 (7331)

Test Date: 2017-07-18; Ambient Temp: 21.4; Tissue Temp: 21.3

Right Touch, W-LAN(802.11a) Ch. 60, Ant Internal, Standard Battery

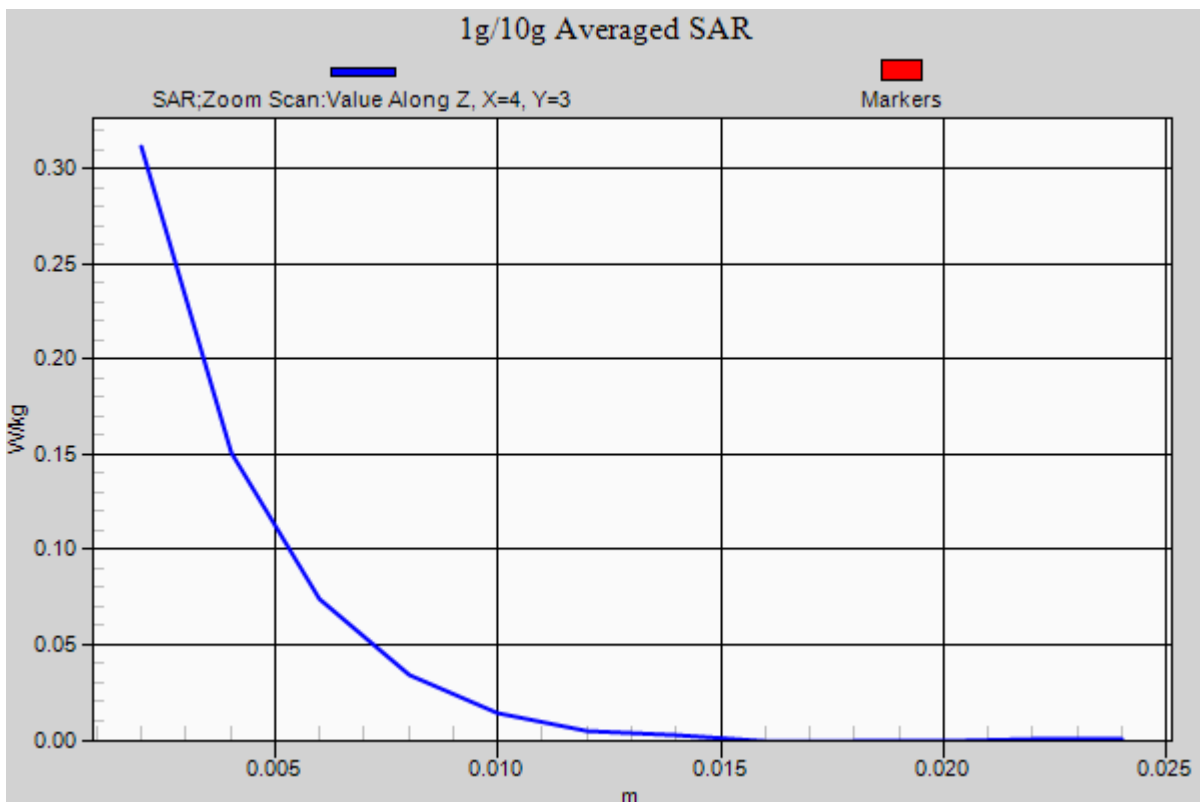
Area Scan (12x19x1): Measurement grid: dx=10mm, dy=10mm

Zoom Scan (7x7x12)/Cube 0: Measurement grid: dx=4mm, dy=4mm, dz=2mm

Power Drift = 0.05 dB

Peak SAR (extrapolated) = 0.588 W/kg

SAR(1 g) = 0.148 W/kg; SAR(10 g) = 0.043 W/kg



DT&C Co., Ltd.

DUT: PM70; Type: PDA

Communication System: UID 0, W-LAN 5G (0); Frequency: 5700 MHz; Duty Cycle: 1:1
Medium parameters used: $f = 5700$ MHz; $\sigma = 5.326$ S/m; $\epsilon_r = 34.962$; $\rho = 1000$ kg/m³
Phantom section: Right Section

DASY5 Configuration:

Probe: EX3DV4 - SN3916; ConvF(4.84, 4.84, 4.84); Calibrated: 4/28/2017; Electronics: DAE4 Sn1453
Sensor-Surface: 2mm (Mechanical Surface Detection)
Phantom: SAM-twin middle(20deg probe tilt)_2013_09_24; Type: QD000P40CD; Serial: 1782
Measurement SW: DASY52, Version 52.8 (8); SEMCAD X Version 14.6.10 (7331)

Test Date: 2017-07-19; Ambient Temp: 21.3; Tissue Temp: 21.0

Right Touch, W-LAN(802.11a) Ch. 140, Ant Internal, Standard Battery

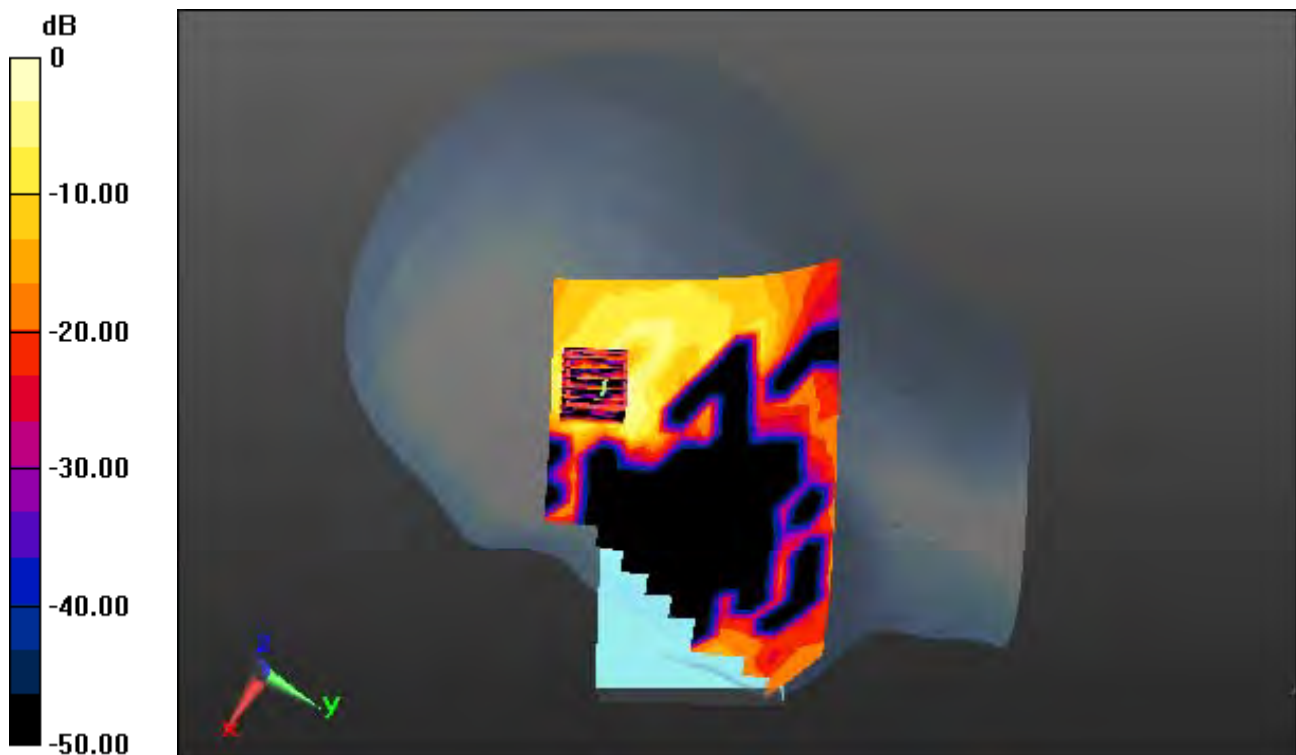
Area Scan (12x19x1): Measurement grid: dx=10mm, dy=10mm

Zoom Scan (7x7x12)/Cube 0: Measurement grid: dx=4mm, dy=4mm, dz=2mm

Power Drift = 0.12 dB

Peak SAR (extrapolated) = 0.898 W/kg

SAR(1 g) = 0.211 W/kg; SAR(10 g) = 0.066 W/kg



0 dB = 0.419 W/kg

DT&C Co., Ltd.

DUT: PM70; Type: PDA

Communication System: UID 0, W-LAN 5G (0); Frequency: 5700 MHz; Duty Cycle: 1:1
Medium parameters used: $f = 5700$ MHz; $\sigma = 5.326$ S/m; $\epsilon_r = 34.962$; $\rho = 1000$ kg/m³
Phantom section: Right Section

DASY5 Configuration:

Probe: EX3DV4 - SN3916; ConvF(4.84, 4.84, 4.84); Calibrated: 4/28/2017; Electronics: DAE4 Sn1453
Sensor-Surface: 2mm (Mechanical Surface Detection)
Phantom: SAM-twin middle(20deg probe tilt)_2013_09_24; Type: QD000P40CD; Serial: 1782
Measurement SW: DASY52, Version 52.8 (8); SEMCAD X Version 14.6.10 (7331)

Test Date: 2017-07-19; Ambient Temp: 21.3; Tissue Temp: 21.0

Right Touch, W-LAN(802.11a) Ch. 140, Ant Internal, Standard Battery

With Enlarge Plot image

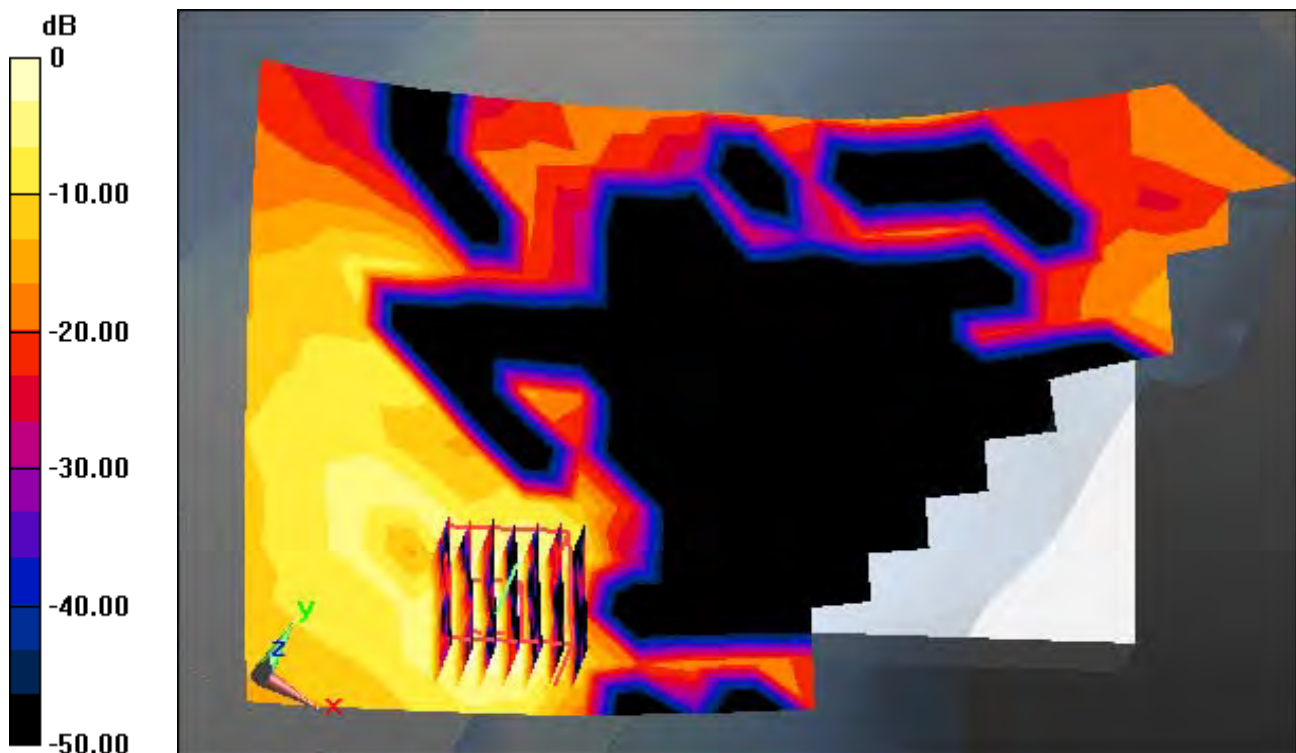
Area Scan (12x19x1): Measurement grid: dx=10mm, dy=10mm

Zoom Scan (7x7x12)/Cube 0: Measurement grid: dx=4mm, dy=4mm, dz=2mm

Power Drift = 0.12 dB

Peak SAR (extrapolated) = 0.898 W/kg

SAR(1 g) = 0.211 W/kg; SAR(10 g) = 0.066 W/kg



0 dB = 0.419 W/kg

DT&C Co., Ltd.

DUT: PM70; Type: PDA

Communication System: UID 0, W-LAN 5G (0); Frequency: 5700 MHz; Duty Cycle: 1:1
Medium parameters used: $f = 5700$ MHz; $\sigma = 5.326$ S/m; $\epsilon_r = 34.962$; $\rho = 1000$ kg/m³
Phantom section: Right Section

DASY5 Configuration:

Probe: EX3DV4 - SN3916; ConvF(4.84, 4.84, 4.84); Calibrated: 4/28/2017; Electronics: DAE4 Sn1453
Sensor-Surface: 2mm (Mechanical Surface Detection)

Phantom: SAM-twin middle(20deg probe tilt)_2013_09_24; Type: QD000P40CD; Serial: 1782
Measurement SW: DASY52, Version 52.8 (8); SEMCAD X Version 14.6.10 (7331)

Test Date: 2017-07-19; Ambient Temp: 21.3; Tissue Temp: 21.0

Right Touch, W-LAN(802.11a) Ch. 140, Ant Internal, Standard Battery

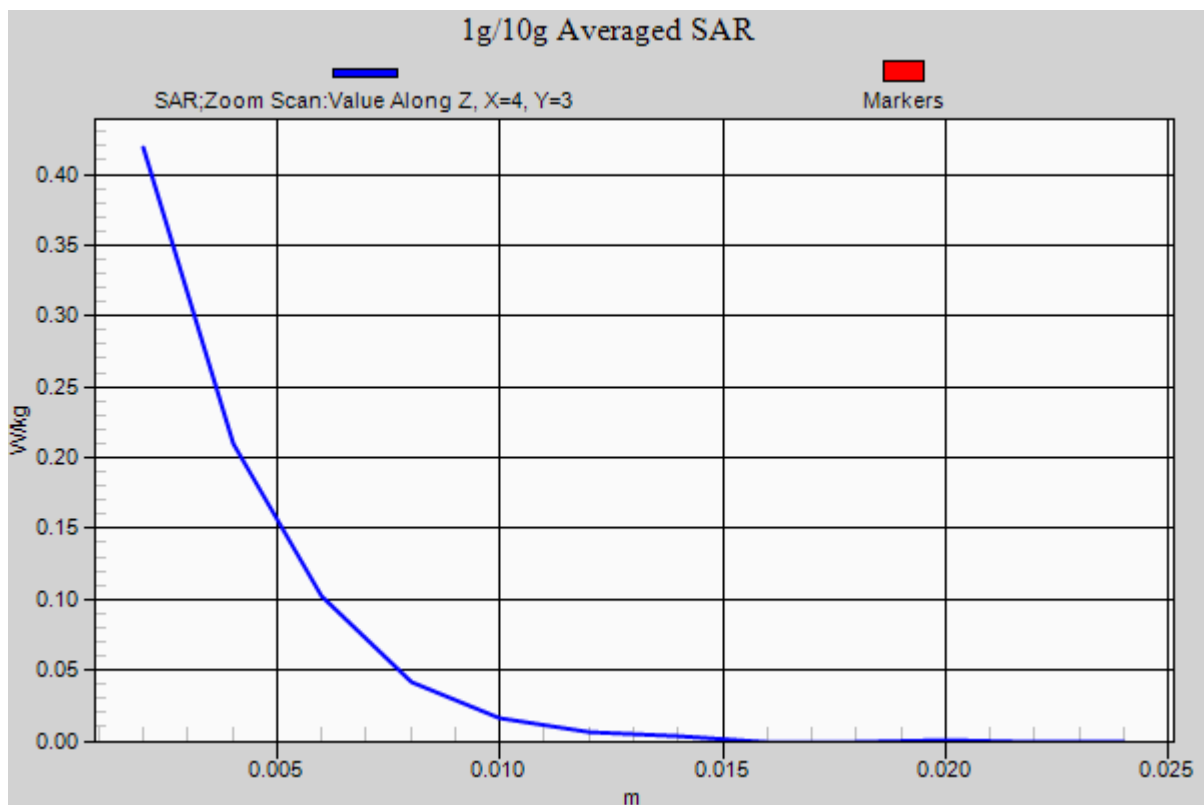
Area Scan (12x19x1): Measurement grid: dx=10mm, dy=10mm

Zoom Scan (7x7x12)/Cube 0: Measurement grid: dx=4mm, dy=4mm, dz=2mm

Power Drift = 0.12 dB

Peak SAR (extrapolated) = 0.898 W/kg

SAR(1 g) = 0.211 W/kg; SAR(10 g) = 0.066 W/kg



DT&C Co., Ltd.

DUT: PM70; Type: PDA

Communication System: UID 0, W-LAN_5 GHz(FCC) (0); Frequency: 5825 MHz; Duty Cycle: 1:1
Medium parameters used: $f = 5825$ MHz; $\sigma = 5.352$ S/m; $\epsilon_r = 34.653$; $\rho = 1000$ kg/m³
Phantom section: Right Section

DASY5 Configuration:

Probe: EX3DV4 - SN3916; ConvF(4.84, 4.84, 4.84); Calibrated: 4/28/2017; Electronics: DAE4 Sn1453
Sensor-Surface: 2mm (Mechanical Surface Detection)
Phantom: SAM-twin middle(20deg probe tilt)_2013_09_24; Type: QD000P40CD; Serial: 1782
Measurement SW: DASY52, Version 52.8 (8); SEMCAD X Version 14.6.10 (7331)

Test Date: 2017-07-20; Ambient Temp: 20.7; Tissue Temp: 20.5

Right Touch, W-LAN(802.11a) Ch. 165, Ant Internal, Standard Battery

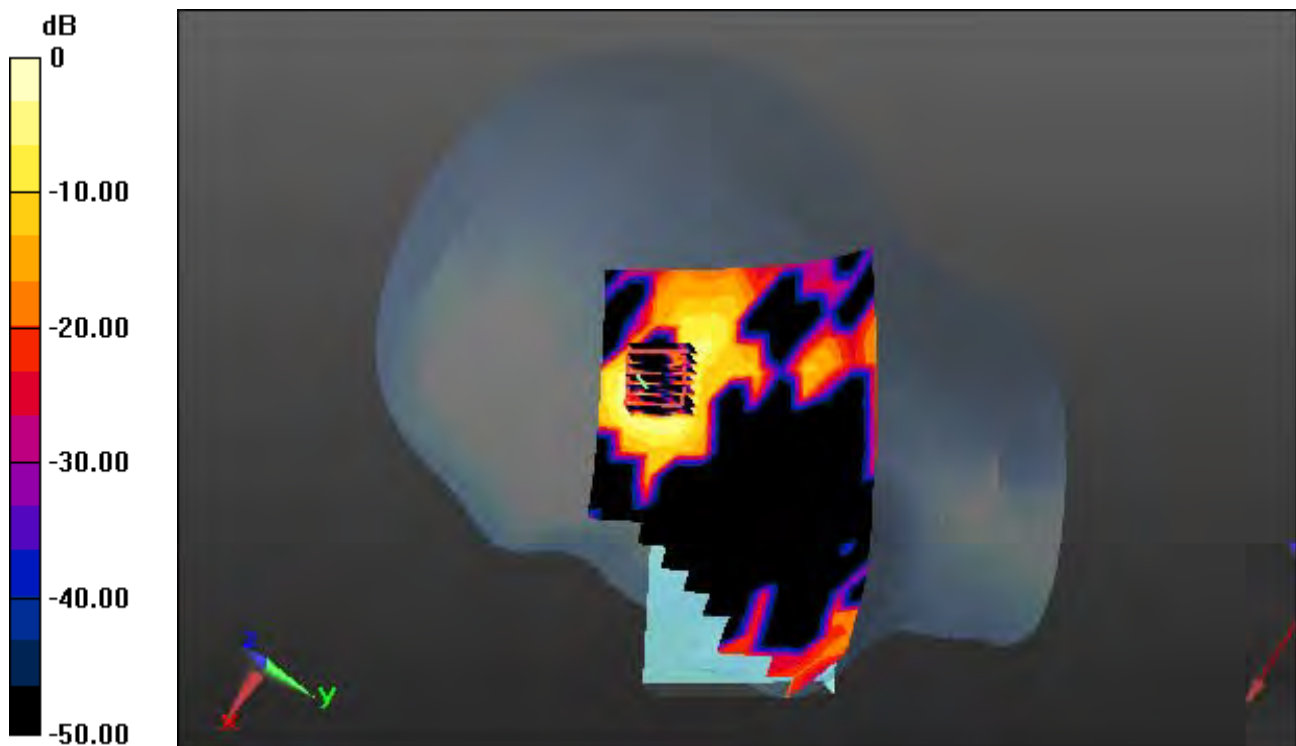
Area Scan (12x19x1): Measurement grid: dx=10mm, dy=10mm

Zoom Scan (7x7x12)/Cube 0: Measurement grid: dx=4mm, dy=4mm, dz=2mm

Power Drift = 0.06 dB

Peak SAR (extrapolated) = 0.534 W/kg

SAR(1 g) = 0.126 W/kg; SAR(10 g) = 0.038 W/kg



0 dB = 0.314 W/kg

DT&C Co., Ltd.

DUT: PM70; Type: PDA

Communication System: UID 0, W-LAN_5 GHz(FCC) (0); Frequency: 5825 MHz; Duty Cycle: 1:1
Medium parameters used: $f = 5825$ MHz; $\sigma = 5.352$ S/m; $\epsilon_r = 34.653$; $\rho = 1000$ kg/m³
Phantom section: Right Section

DASY5 Configuration:

Probe: EX3DV4 - SN3916; ConvF(4.84, 4.84, 4.84); Calibrated: 4/28/2017; Electronics: DAE4 Sn1453
Sensor-Surface: 2mm (Mechanical Surface Detection)

Phantom: SAM-twin middle(20deg probe tilt)_2013_09_24; Type: QD000P40CD; Serial: 1782
Measurement SW: DASY52, Version 52.8 (8); SEMCAD X Version 14.6.10 (7331)

Test Date: 2017-07-20; Ambient Temp: 20.7; Tissue Temp: 20.5

Right Touch, W-LAN(802.11a) Ch. 165, Ant Internal, Standard Battery

With Enlarge Plot image

Area Scan (12x19x1): Measurement grid: dx=10mm, dy=10mm

Zoom Scan (7x7x12)/Cube 0: Measurement grid: dx=4mm, dy=4mm, dz=2mm

Power Drift = 0.06 dB

Peak SAR (extrapolated) = 0.534 W/kg

SAR(1 g) = 0.126 W/kg; SAR(10 g) = 0.038 W/kg



0 dB = 0.314 W/kg

DT&C Co., Ltd.

DUT: PM70; Type: PDA

Communication System: UID 0, W-LAN_5 GHz(FCC) (0); Frequency: 5825 MHz; Duty Cycle: 1:1
Medium parameters used: $f = 5825$ MHz; $\sigma = 5.352$ S/m; $\epsilon_r = 34.653$; $\rho = 1000$ kg/m³
Phantom section: Right Section

DASY5 Configuration:

Probe: EX3DV4 - SN3916; ConvF(4.84, 4.84, 4.84); Calibrated: 4/28/2017; Electronics: DAE4 Sn1453
Sensor-Surface: 2mm (Mechanical Surface Detection)

Phantom: SAM-twin middle(20deg probe tilt)_2013_09_24; Type: QD000P40CD; Serial: 1782
Measurement SW: DASY52, Version 52.8 (8); SEMCAD X Version 14.6.10 (7331)

Test Date: 2017-07-20; Ambient Temp: 20.7; Tissue Temp: 20.5

Right Touch, W-LAN(802.11a) Ch. 165, Ant Internal, Standard Battery

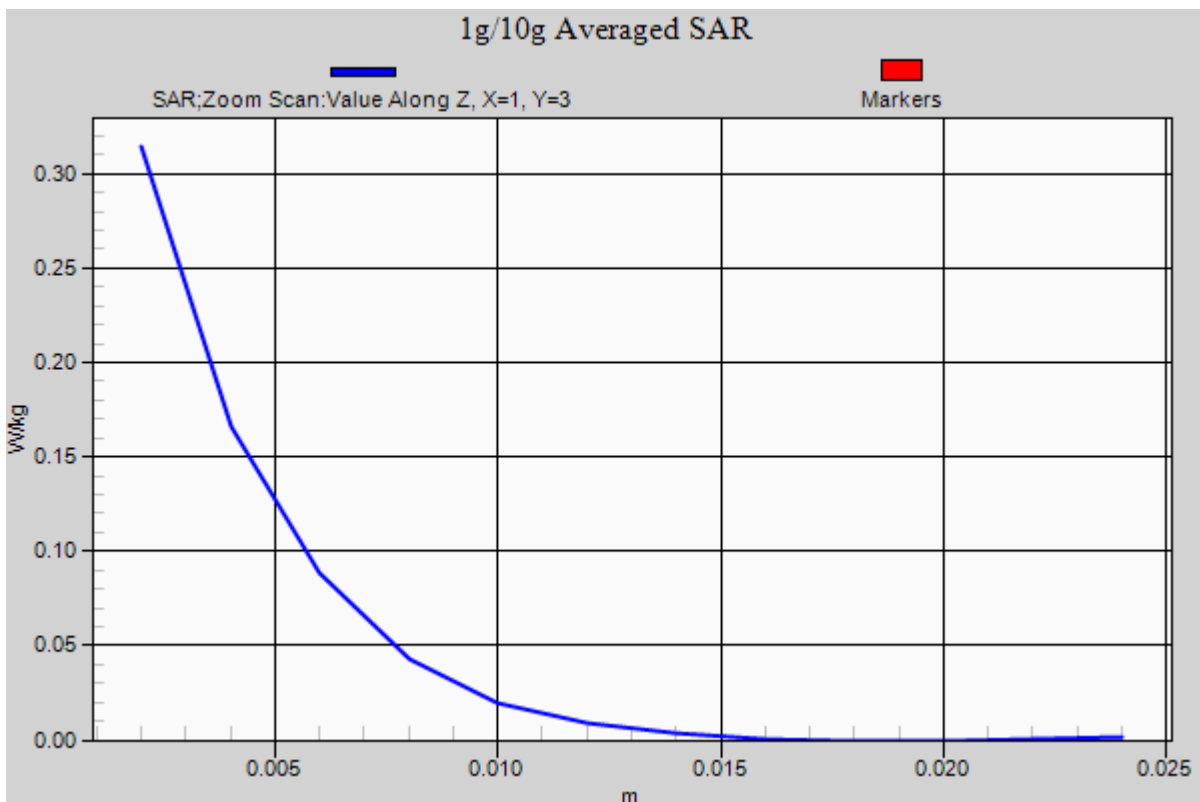
Area Scan (12x19x1): Measurement grid: dx=10mm, dy=10mm

Zoom Scan (7x7x12)/Cube 0: Measurement grid: dx=4mm, dy=4mm, dz=2mm

Power Drift = 0.06 dB

Peak SAR (extrapolated) = 0.534 W/kg

SAR(1 g) = 0.126 W/kg; SAR(10 g) = 0.038 W/kg



DT&C Co., Ltd.

DUT: PM70; Type: PDA

Communication System: UID 0, 2.4 GHz W-LAN (0); Frequency: 2462 MHz; Duty Cycle: 1:1
Medium parameters used: $f = 2462$ MHz; $\sigma = 1.934$ S/m; $\epsilon_r = 51.845$; $\rho = 1000$ kg/m³
Phantom section: Flat Section

DASY5 Configuration:

Probe: EX3DV4 - SN3866; ConvF(7.56, 7.56, 7.56); Calibrated: 5/31/2017; Electronics: DAE4 Sn1453
Sensor-Surface: 2mm (Mechanical Surface Detection)

Phantom: SAM-twin middle(20deg probe tilt)_2013_09_24; Type: QD000P40CD; Serial: 1782
Measurement SW: DASY52, Version 52.8 (8); SEMCAD X Version 14.6.10 (7331)

Test Date: 2017-07-17; Ambient Temp: 21.7; Tissue Temp: 21.6

1.5 cm space from Body, Rear, W-LAN(802.11b) Ch. 11, Ant. Internal

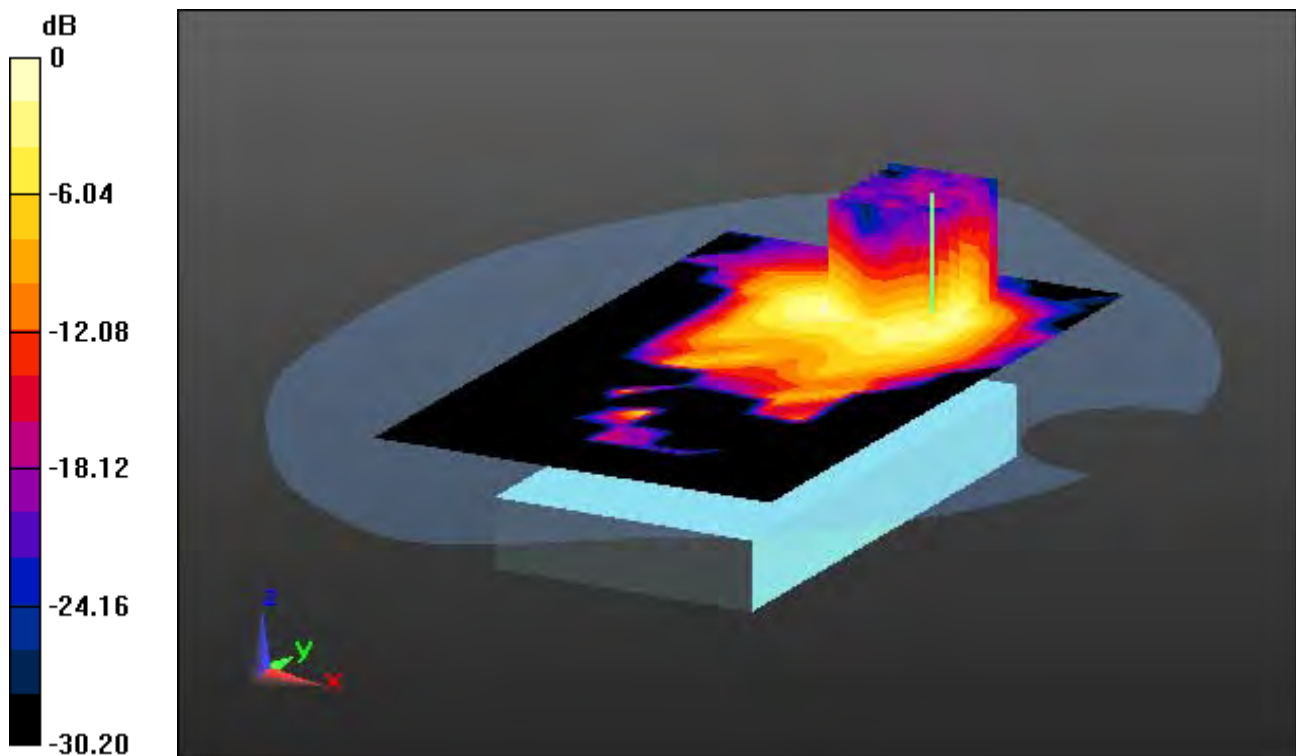
Area Scan (10x16x1): Measurement grid: dx=12mm, dy=12mm

Zoom Scan (7x7x7)/Cube 0: Measurement grid: dx=5mm, dy=5mm, dz=5mm

Power Drift = -0.01 dB

Peak SAR (extrapolated) = 0.225 W/kg

SAR(1 g) = 0.102 W/kg; SAR(10 g) = 0.046 W/kg



0 dB = 0.160 W/kg

DT&C Co., Ltd.

DUT: PM70; Type: PDA

Communication System: UID 0, 2.4 GHz W-LAN (0); Frequency: 2462 MHz; Duty Cycle: 1:1
Medium parameters used: $f = 2462$ MHz; $\sigma = 1.934$ S/m; $\epsilon_r = 51.845$; $\rho = 1000$ kg/m³
Phantom section: Flat Section

DASY5 Configuration:

Probe: EX3DV4 - SN3866; ConvF(7.56, 7.56, 7.56); Calibrated: 5/31/2017; Electronics: DAE4 Sn1453
Sensor-Surface: 2mm (Mechanical Surface Detection)

Phantom: SAM-twin middle(20deg probe tilt)_2013_09_24; Type: QD000P40CD; Serial: 1782
Measurement SW: DASY52, Version 52.8 (8); SEMCAD X Version 14.6.10 (7331)

Test Date: 2017-07-17; Ambient Temp: 21.7; Tissue Temp: 21.6

1.5 cm space from Body, Rear, W-LAN(802.11b) Ch. 11, Ant. Internal

With Enlarge Plot image

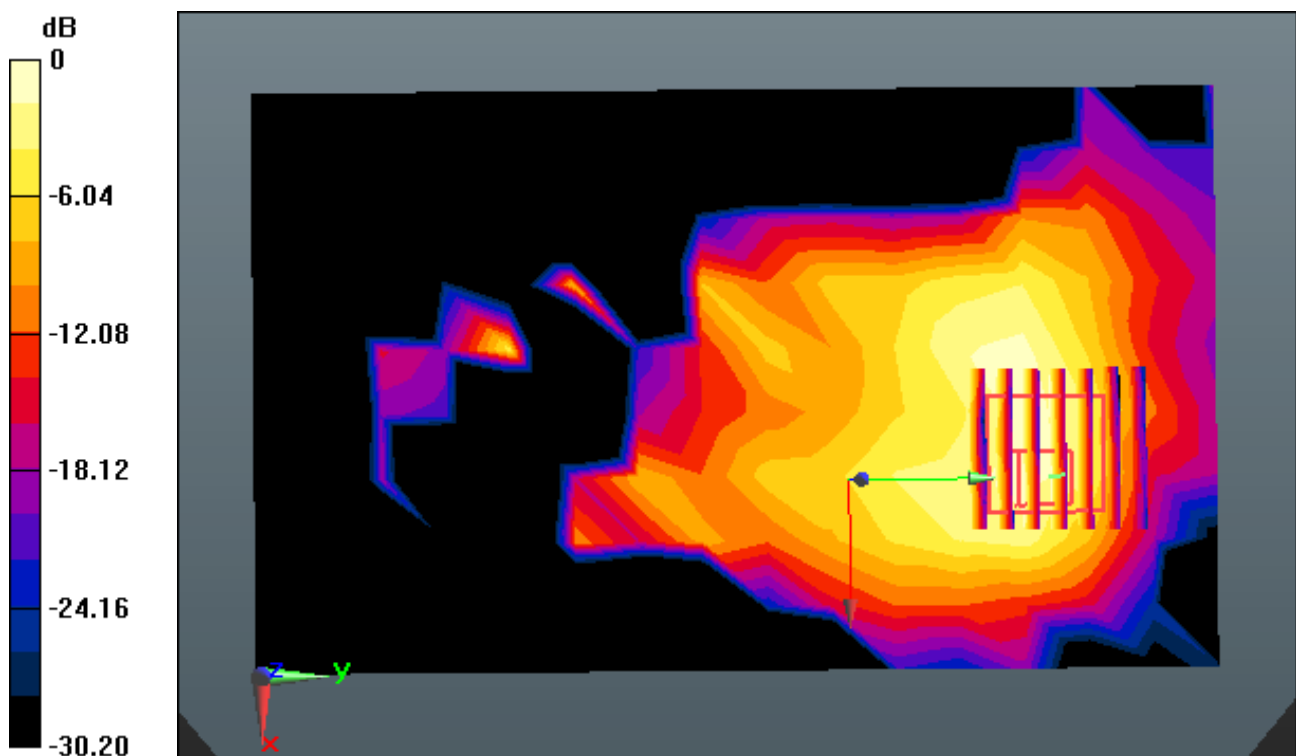
Area Scan (10x16x1): Measurement grid: dx=12mm, dy=12mm

Zoom Scan (7x7x7)/Cube 0: Measurement grid: dx=5mm, dy=5mm, dz=5mm

Power Drift = -0.01 dB

Peak SAR (extrapolated) = 0.225 W/kg

SAR(1 g) = 0.102 W/kg; SAR(10 g) = 0.046 W/kg



0 dB = 0.160 W/kg

DT&C Co., Ltd.

DUT: PM70; Type: PDA

Communication System: UID 0, 2.4 GHz W-LAN (0); Frequency: 2462 MHz; Duty Cycle: 1:1
Medium parameters used: $f = 2462$ MHz; $\sigma = 1.934$ S/m; $\epsilon_r = 51.845$; $\rho = 1000$ kg/m³
Phantom section: Flat Section

DASY5 Configuration:

Probe: EX3DV4 - SN3866; ConvF(7.56, 7.56, 7.56); Calibrated: 5/31/2017; Electronics: DAE4 Sn1453
Sensor-Surface: 2mm (Mechanical Surface Detection)

Phantom: SAM-twin middle(20deg probe tilt)_2013_09_24; Type: QD000P40CD; Serial: 1782
Measurement SW: DASY52, Version 52.8 (8); SEMCAD X Version 14.6.10 (7331)

Test Date: 2017-07-17; Ambient Temp: 21.7; Tissue Temp: 21.6

1.5 cm space from Body, Rear, W-LAN(802.11b) Ch. 11, Ant. Internal

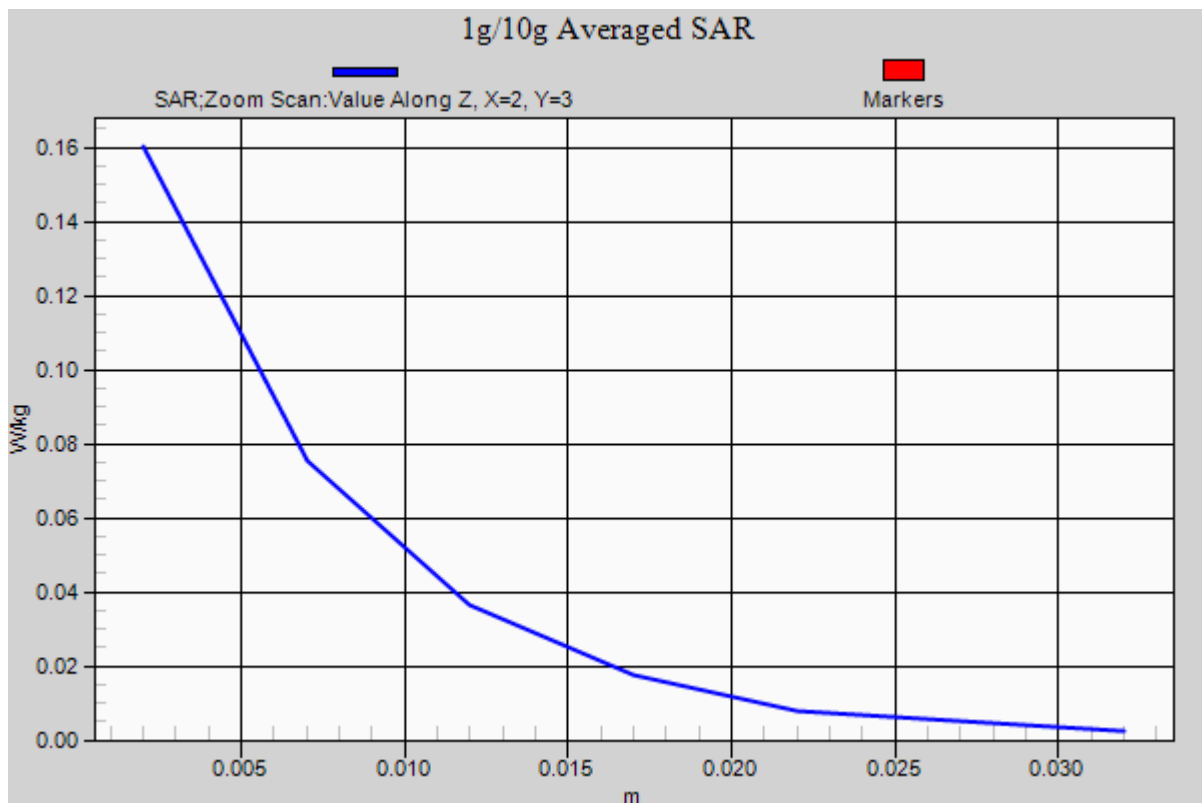
Area Scan (10x16x1): Measurement grid: dx=12mm, dy=12mm

Zoom Scan (7x7x7)/Cube 0: Measurement grid: dx=5mm, dy=5mm, dz=5mm

Power Drift = -0.01 dB

Peak SAR (extrapolated) = 0.225 W/kg

SAR(1 g) = 0.102 W/kg; SAR(10 g) = 0.046 W/kg



DT&C Co., Ltd.

DUT: PM70; Type: PDA

Communication System: UID 0, W-LAN 5G (0); Frequency: 5300 MHz; Duty Cycle: 1:1
Medium parameters used: $f = 5300$ MHz; $\sigma = 5.302$ S/m; $\epsilon_r = 47.183$; $\rho = 1000$ kg/m³
Phantom section: Flat Section

DASY5 Configuration:

Probe: EX3DV4 - SN3916; ConvF(4.65, 4.65, 4.65); Calibrated: 4/28/2017; Electronics: DAE4 Sn1453
Sensor-Surface: 2mm (Mechanical Surface Detection)

Phantom: SAM-twin middle(20deg probe tilt)_2013_09_24; Type: QD000P40CD; Serial: 1782
Measurement SW: DASY52, Version 52.8 (8); SEMCAD X Version 14.6.10 (7331)

Test Date: 2017-07-18; Ambient Temp: 21.4; Tissue Temp: 21.1

1.5 cm space from Body, Rear, W-LAN(802.11a) Ch. 60, Ant. Internal

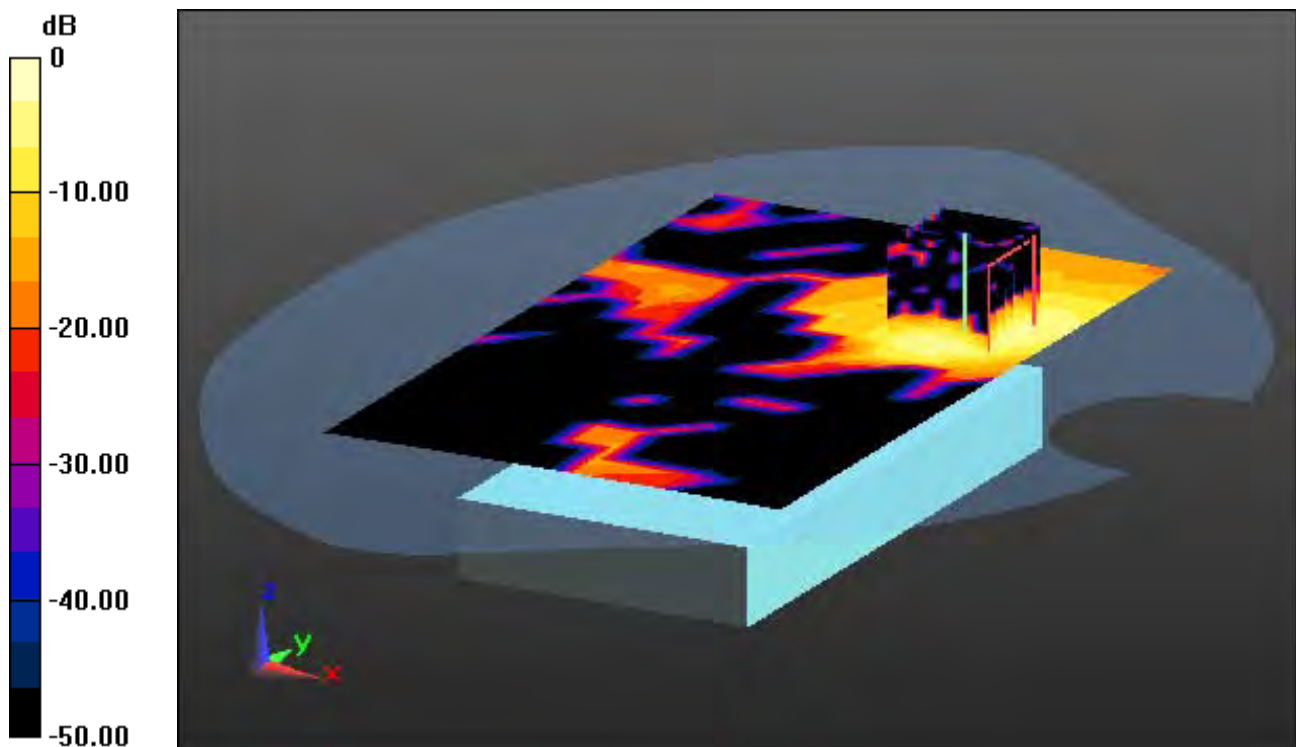
Area Scan (12x19x1): Measurement grid: dx=10mm, dy=10mm

Zoom Scan (7x7x12)/Cube 0: Measurement grid: dx=4mm, dy=4mm, dz=2mm

Power Drift = 0.13 dB

Peak SAR (extrapolated) = 0.291 W/kg

SAR(1 g) = 0.076 W/kg; SAR(10 g) = 0.024 W/kg



0 dB = 0.156 W/kg

DT&C Co., Ltd.

DUT: PM70; Type: PDA

Communication System: UID 0, W-LAN 5G (0); Frequency: 5300 MHz; Duty Cycle: 1:1
Medium parameters used: $f = 5300$ MHz; $\sigma = 5.302$ S/m; $\epsilon_r = 47.183$; $\rho = 1000$ kg/m³
Phantom section: Flat Section

DASY5 Configuration:

Probe: EX3DV4 - SN3916; ConvF(4.65, 4.65, 4.65); Calibrated: 4/28/2017; Electronics: DAE4 Sn1453
Sensor-Surface: 2mm (Mechanical Surface Detection)
Phantom: SAM-twin middle(20deg probe tilt)_2013_09_24; Type: QD000P40CD; Serial: 1782
Measurement SW: DASY52, Version 52.8 (8); SEMCAD X Version 14.6.10 (7331)

Test Date: 2017-07-18; Ambient Temp: 21.4; Tissue Temp: 21.1

1.5 cm space from Body, Rear, W-LAN(802.11a) Ch. 60, Ant. Internal

With Enlarge Plot image

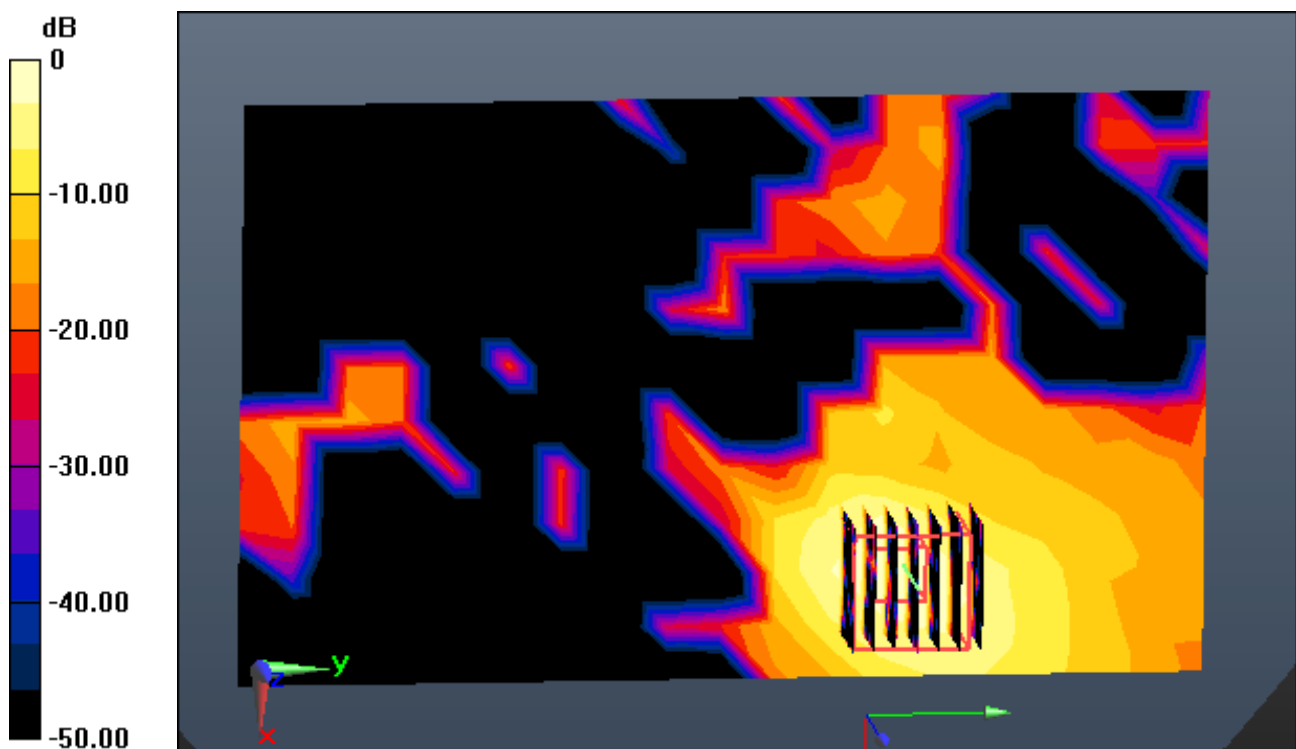
Area Scan (12x19x1): Measurement grid: dx=10mm, dy=10mm

Zoom Scan (7x7x12)/Cube 0: Measurement grid: dx=4mm, dy=4mm, dz=2mm

Power Drift = 0.13 dB

Peak SAR (extrapolated) = 0.291 W/kg

SAR(1 g) = 0.076 W/kg; SAR(10 g) = 0.024 W/kg



0 dB = 0.156 W/kg

DT&C Co., Ltd.

DUT: PM70; Type: PDA

Communication System: UID 0, W-LAN 5G (0); Frequency: 5300 MHz; Duty Cycle: 1:1
Medium parameters used: $f = 5300$ MHz; $\sigma = 5.302$ S/m; $\epsilon_r = 47.183$; $\rho = 1000$ kg/m³
Phantom section: Flat Section

DASY5 Configuration:

Probe: EX3DV4 - SN3916; ConvF(4.65, 4.65, 4.65); Calibrated: 4/28/2017; Electronics: DAE4 Sn1453
Sensor-Surface: 2mm (Mechanical Surface Detection)

Phantom: SAM-twin middle(20deg probe tilt)_2013_09_24; Type: QD000P40CD; Serial: 1782
Measurement SW: DASY52, Version 52.8 (8); SEMCAD X Version 14.6.10 (7331)

Test Date: 2017-07-18; Ambient Temp: 21.4; Tissue Temp: 21.1

1.5 cm space from Body, Rear, W-LAN(802.11a) Ch. 60, Ant. Internal

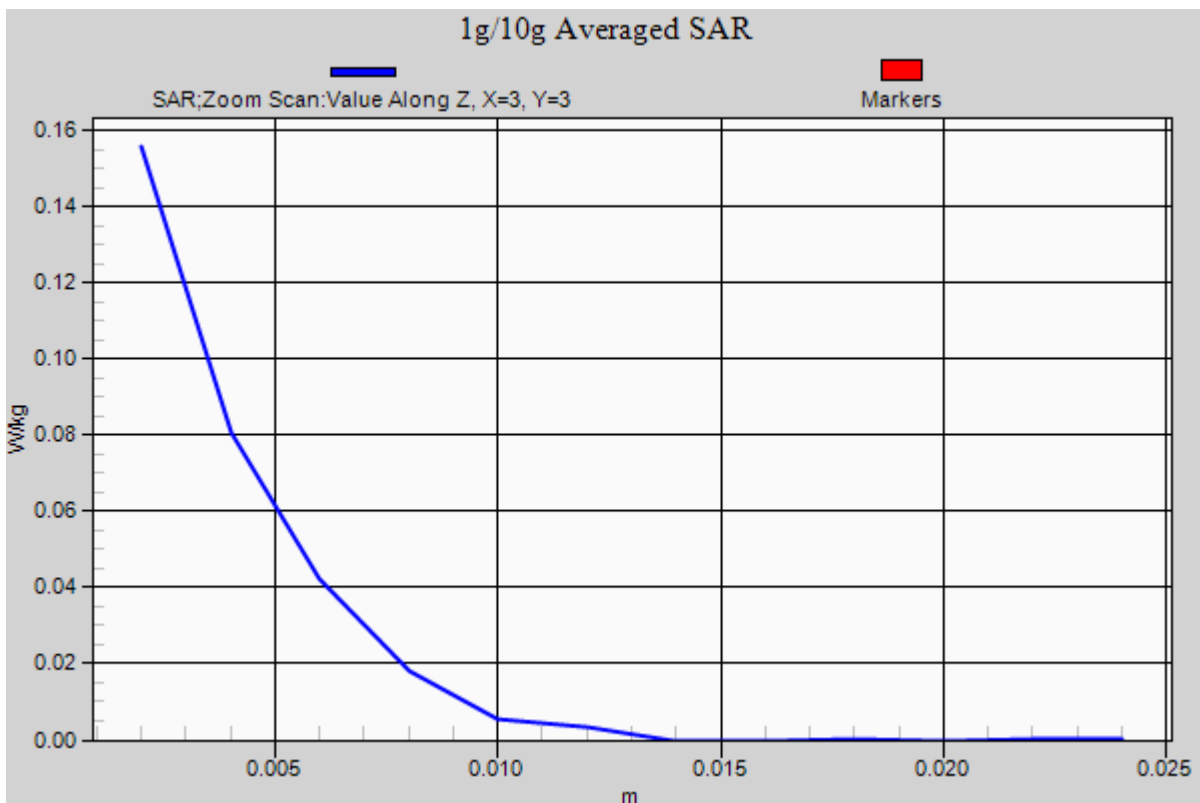
Area Scan (12x19x1): Measurement grid: dx=10mm, dy=10mm

Zoom Scan (7x7x12)/Cube 0: Measurement grid: dx=4mm, dy=4mm, dz=2mm

Power Drift = 0.13 dB

Peak SAR (extrapolated) = 0.291 W/kg

SAR(1 g) = 0.076 W/kg; SAR(10 g) = 0.024 W/kg



DT&C Co., Ltd.

DUT: PM70; Type: PDA

Communication System: UID 0, W-LAN 5G (0); Frequency: 5700 MHz; Duty Cycle: 1:1
Medium parameters used: $f = 5700$ MHz; $\sigma = 5.853$ S/m; $\epsilon_r = 46.45$; $\rho = 1000$ kg/m³
Phantom section: Flat Section

DASY5 Configuration:

Probe: EX3DV4 - SN3916; ConvF(4.09, 4.09, 4.09); Calibrated: 4/28/2017; Electronics: DAE4 Sn1453
Sensor-Surface: 2mm (Mechanical Surface Detection)

Phantom: SAM-twin middle(20deg probe tilt)_2013_09_24; Type: QD000P40CD; Serial: 1782
Measurement SW: DASY52, Version 52.8 (8); SEMCAD X Version 14.6.10 (7331)

Test Date: 2017-07-18; Ambient Temp: 21.4; Tissue Temp: 21.1

1.5 cm space from Body, Rear, W-LAN(802.11a) Ch. 140, Ant. Internal

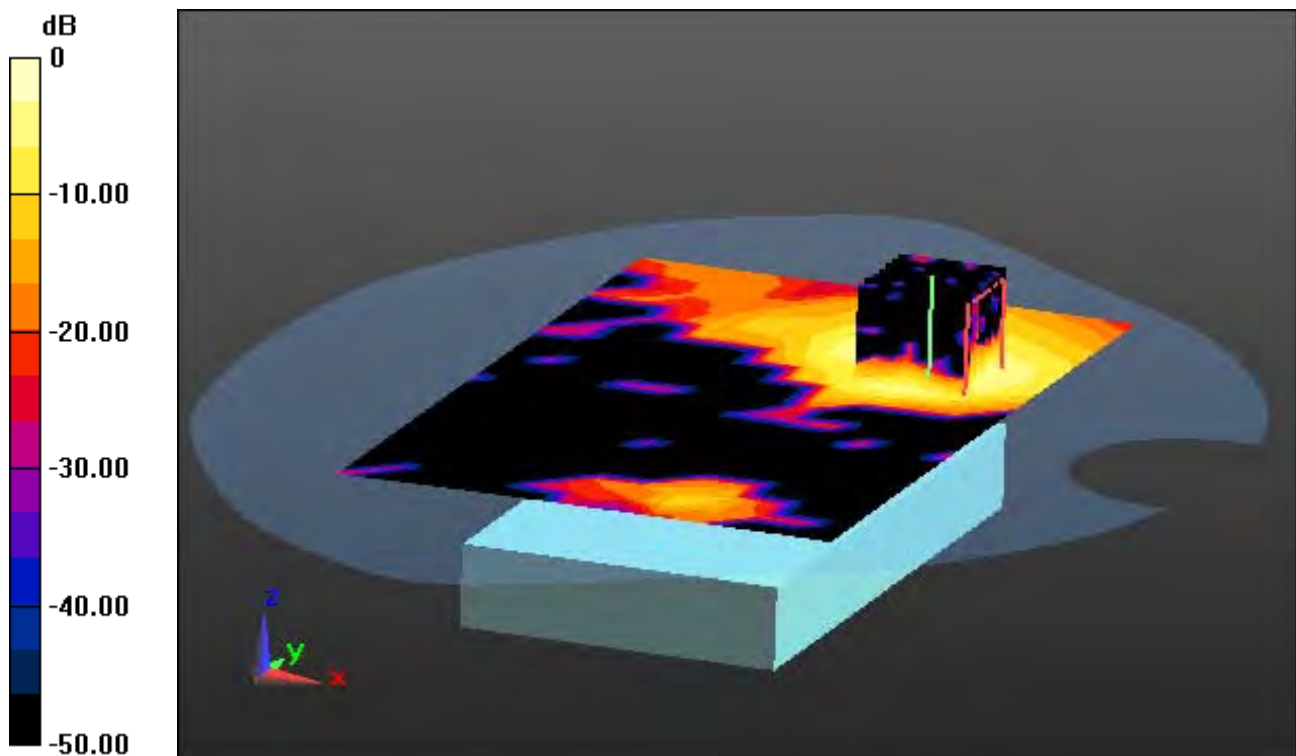
Area Scan (12x19x1): Measurement grid: dx=10mm, dy=10mm

Zoom Scan (7x7x12)/Cube 0: Measurement grid: dx=4mm, dy=4mm, dz=2mm

Power Drift = 0.07 dB

Peak SAR (extrapolated) = 0.506 W/kg

SAR(1 g) = 0.135 W/kg; SAR(10 g) = 0.046 W/kg



0 dB = 0.273 W/kg

DT&C Co., Ltd.

DUT: PM70; Type: PDA

Communication System: UID 0, W-LAN 5G (0); Frequency: 5700 MHz; Duty Cycle: 1:1
Medium parameters used: $f = 5700$ MHz; $\sigma = 5.853$ S/m; $\epsilon_r = 46.45$; $\rho = 1000$ kg/m³
Phantom section: Flat Section

DASY5 Configuration:

Probe: EX3DV4 - SN3916; ConvF(4.09, 4.09, 4.09); Calibrated: 4/28/2017; Electronics: DAE4 Sn1453
Sensor-Surface: 2mm (Mechanical Surface Detection)

Phantom: SAM-twin middle(20deg probe tilt)_2013_09_24; Type: QD000P40CD; Serial: 1782
Measurement SW: DASY52, Version 52.8 (8); SEMCAD X Version 14.6.10 (7331)

Test Date: 2017-07-18; Ambient Temp: 21.4; Tissue Temp: 21.1

1.5 cm space from Body, Rear, W-LAN(802.11a) Ch. 140, Ant. Internal

With Enlarge Plot image

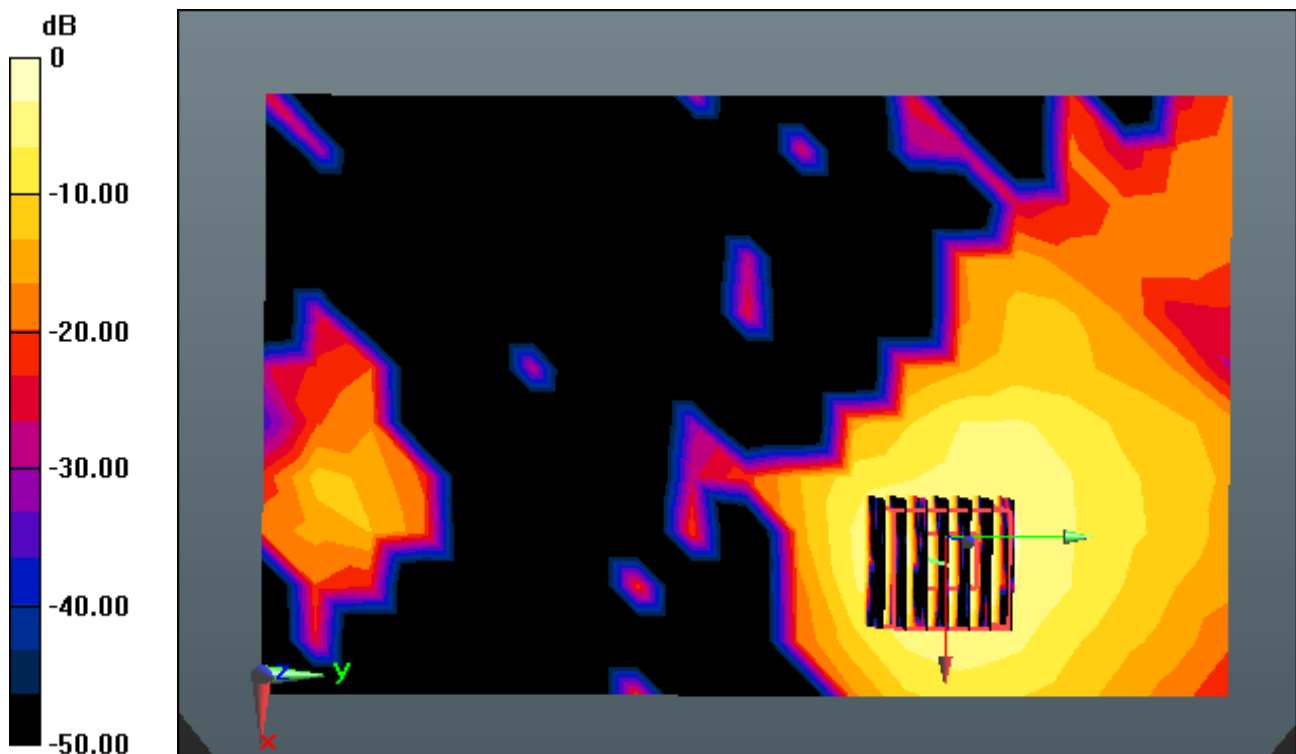
Area Scan (12x19x1): Measurement grid: dx=10mm, dy=10mm

Zoom Scan (7x7x12)/Cube 0: Measurement grid: dx=4mm, dy=4mm, dz=2mm

Power Drift = 0.07 dB

Peak SAR (extrapolated) = 0.506 W/kg

SAR(1 g) = 0.135 W/kg; SAR(10 g) = 0.046 W/kg



0 dB = 0.273 W/kg

DT&C Co., Ltd.

DUT: PM70; Type: PDA

Communication System: UID 0, W-LAN 5G (0); Frequency: 5700 MHz; Duty Cycle: 1:1
Medium parameters used: $f = 5700$ MHz; $\sigma = 5.853$ S/m; $\epsilon_r = 46.45$; $\rho = 1000$ kg/m³
Phantom section: Flat Section

DASY5 Configuration:

Probe: EX3DV4 - SN3916; ConvF(4.09, 4.09, 4.09); Calibrated: 4/28/2017; Electronics: DAE4 Sn1453
Sensor-Surface: 2mm (Mechanical Surface Detection)

Phantom: SAM-twin middle(20deg probe tilt)_2013_09_24; Type: QD000P40CD; Serial: 1782
Measurement SW: DASY52, Version 52.8 (8); SEMCAD X Version 14.6.10 (7331)

Test Date: 2017-07-18; Ambient Temp: 21.4; Tissue Temp: 21.1

1.5 cm space from Body, Rear, W-LAN(802.11a) Ch. 140, Ant. Internal

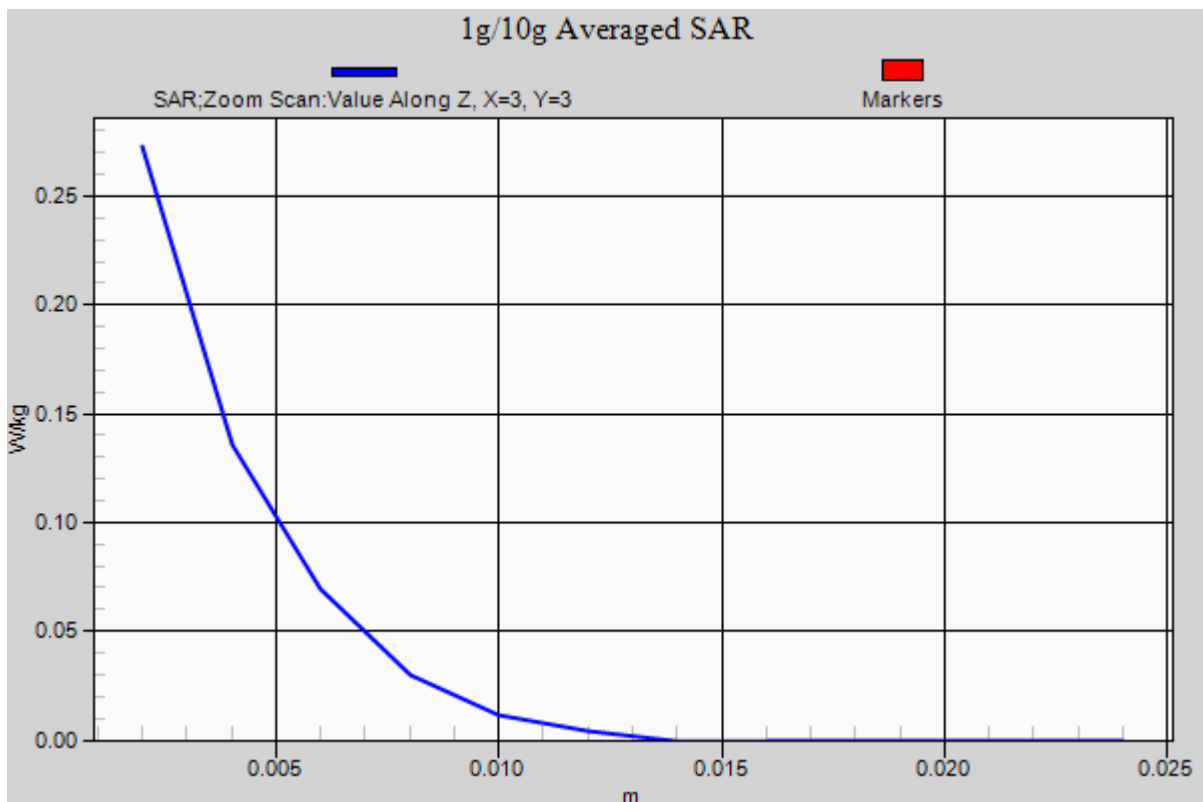
Area Scan (12x19x1): Measurement grid: dx=10mm, dy=10mm

Zoom Scan (7x7x12)/Cube 0: Measurement grid: dx=4mm, dy=4mm, dz=2mm

Power Drift = 0.07 dB

Peak SAR (extrapolated) = 0.506 W/kg

SAR(1 g) = 0.135 W/kg; SAR(10 g) = 0.046 W/kg



DT&C Co., Ltd.

DUT: PM70; Type: PDA

Communication System: UID 0, W-LAN 5G (0); Frequency: 5825 MHz; Duty Cycle: 1:1
Medium parameters used: $f = 5825$ MHz; $\sigma = 6.023$ S/m; $\epsilon_r = 47.056$; $\rho = 1000$ kg/m³
Phantom section: Flat Section

DASY5 Configuration:

Probe: EX3DV4 - SN3916; ConvF(4.22, 4.22, 4.22); Calibrated: 4/28/2017; Electronics: DAE4 Sn1453
Sensor-Surface: 2mm (Mechanical Surface Detection)

Phantom: SAM-twin middle(20deg probe tilt)_2013_09_24; Type: QD000P40CD; Serial: 1782
Measurement SW: DASY52, Version 52.8 (8); SEMCAD X Version 14.6.10 (7331)

Test Date: 2017-07-20; Ambient Temp: 20.7; Tissue Temp: 20.6

1.5 cm space from Body, Rear, W-LAN(802.11a) Ch. 165, Ant. Internal

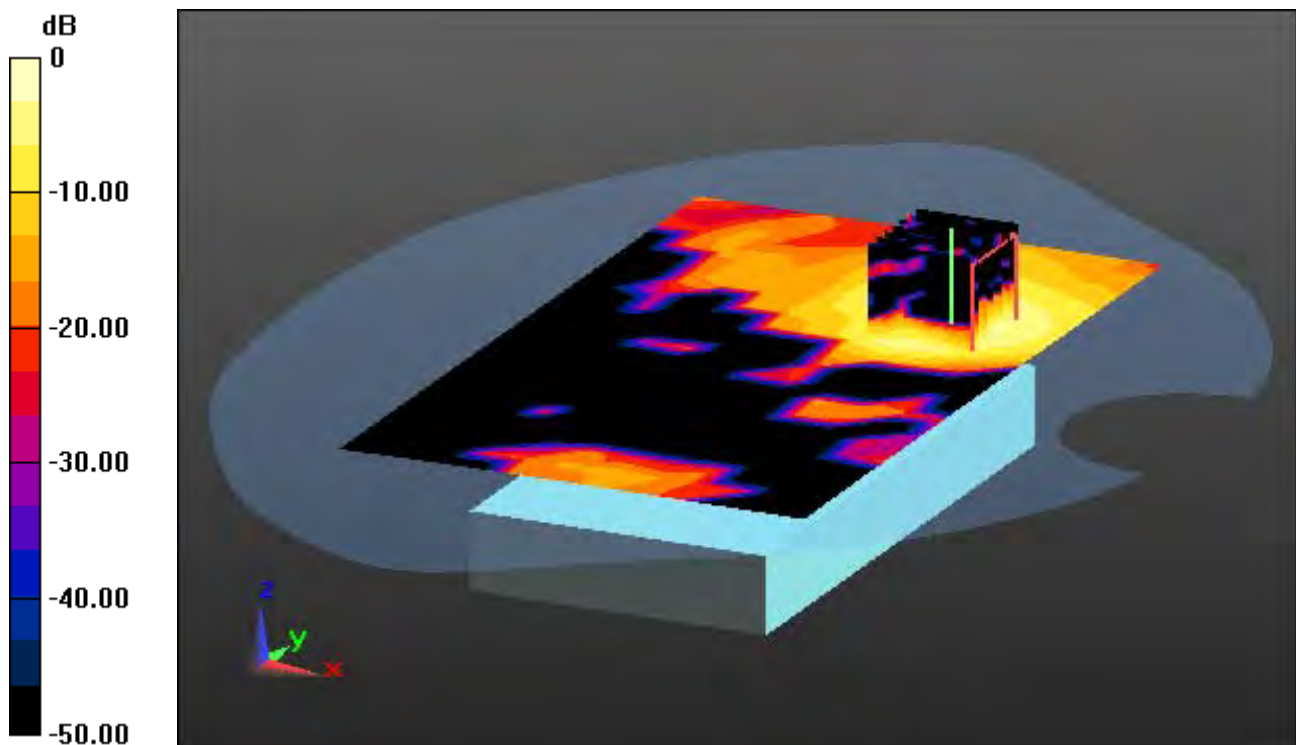
Area Scan (12x19x1): Measurement grid: dx=10mm, dy=10mm

Zoom Scan (7x7x12)/Cube 0: Measurement grid: dx=4mm, dy=4mm, dz=2mm

Power Drift = 0.09 dB

Peak SAR (extrapolated) = 0.762 W/kg

SAR(1 g) = 0.180 W/kg; SAR(10 g) = 0.061 W/kg



0 dB = 0.361 W/kg

DT&C Co., Ltd.

DUT: PM70; Type: PDA

Communication System: UID 0, W-LAN 5G (0); Frequency: 5825 MHz; Duty Cycle: 1:1
Medium parameters used: $f = 5825$ MHz; $\sigma = 6.023$ S/m; $\epsilon_r = 47.056$; $\rho = 1000$ kg/m³
Phantom section: Flat Section

DASY5 Configuration:

Probe: EX3DV4 - SN3916; ConvF(4.22, 4.22, 4.22); Calibrated: 4/28/2017; Electronics: DAE4 Sn1453
Sensor-Surface: 2mm (Mechanical Surface Detection)

Phantom: SAM-twin middle(20deg probe tilt)_2013_09_24; Type: QD000P40CD; Serial: 1782
Measurement SW: DASY52, Version 52.8 (8); SEMCAD X Version 14.6.10 (7331)

Test Date: 2017-07-20; Ambient Temp: 20.7; Tissue Temp: 20.6

1.5 cm space from Body, Rear, W-LAN(802.11a) Ch. 165, Ant. Internal

With Enlarge Plot image

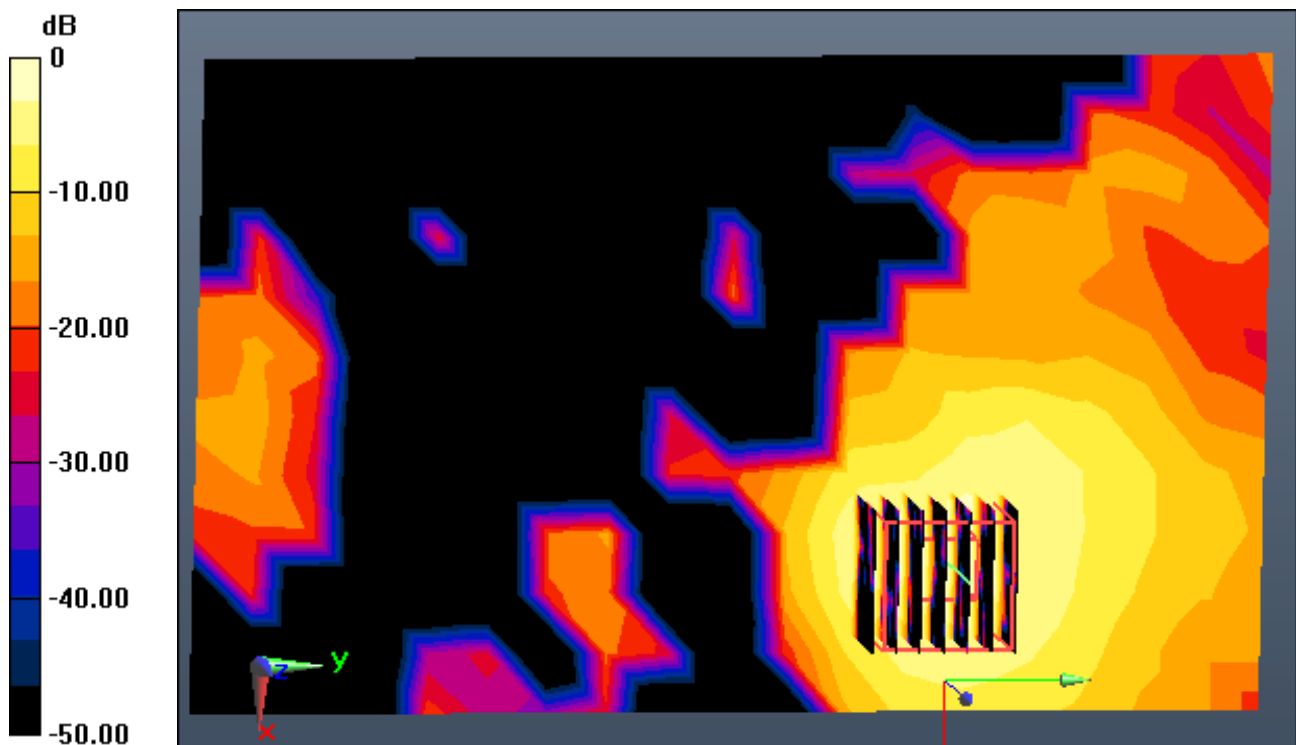
Area Scan (12x19x1): Measurement grid: dx=10mm, dy=10mm

Zoom Scan (7x7x12)/Cube 0: Measurement grid: dx=4mm, dy=4mm, dz=2mm

Power Drift = 0.09 dB

Peak SAR (extrapolated) = 0.762 W/kg

SAR(1 g) = 0.180 W/kg; SAR(10 g) = 0.061 W/kg



0 dB = 0.361 W/kg

DT&C Co., Ltd.

DUT: PM70; Type: PDA

Communication System: UID 0, W-LAN 5G (0); Frequency: 5825 MHz; Duty Cycle: 1:1
Medium parameters used: $f = 5825$ MHz; $\sigma = 6.023$ S/m; $\epsilon_r = 47.056$; $\rho = 1000$ kg/m³
Phantom section: Flat Section

DASY5 Configuration:

Probe: EX3DV4 - SN3916; ConvF(4.22, 4.22, 4.22); Calibrated: 4/28/2017; Electronics: DAE4 Sn1453
Sensor-Surface: 2mm (Mechanical Surface Detection)

Phantom: SAM-twin middle(20deg probe tilt)_2013_09_24; Type: QD000P40CD; Serial: 1782
Measurement SW: DASY52, Version 52.8 (8); SEMCAD X Version 14.6.10 (7331)

Test Date: 2017-07-20; Ambient Temp: 20.7; Tissue Temp: 20.6

1.5 cm space from Body, Rear, W-LAN(802.11a) Ch. 165, Ant. Internal

Area Scan (12x19x1): Measurement grid: dx=10mm, dy=10mm

Zoom Scan (7x7x12)/Cube 0: Measurement grid: dx=4mm, dy=4mm, dz=2mm

Power Drift = 0.09 dB

Peak SAR (extrapolated) = 0.762 W/kg

SAR(1 g) = 0.180 W/kg; SAR(10 g) = 0.061 W/kg

