

SAR Test Setup Photographs

- Head SAR Test Photo
- Body-Worn SAR Test Photo
- Hotspot SAR Test Photo
- Extremity SAR Test Photo

■ Test Setup Photo (Liquid depth)

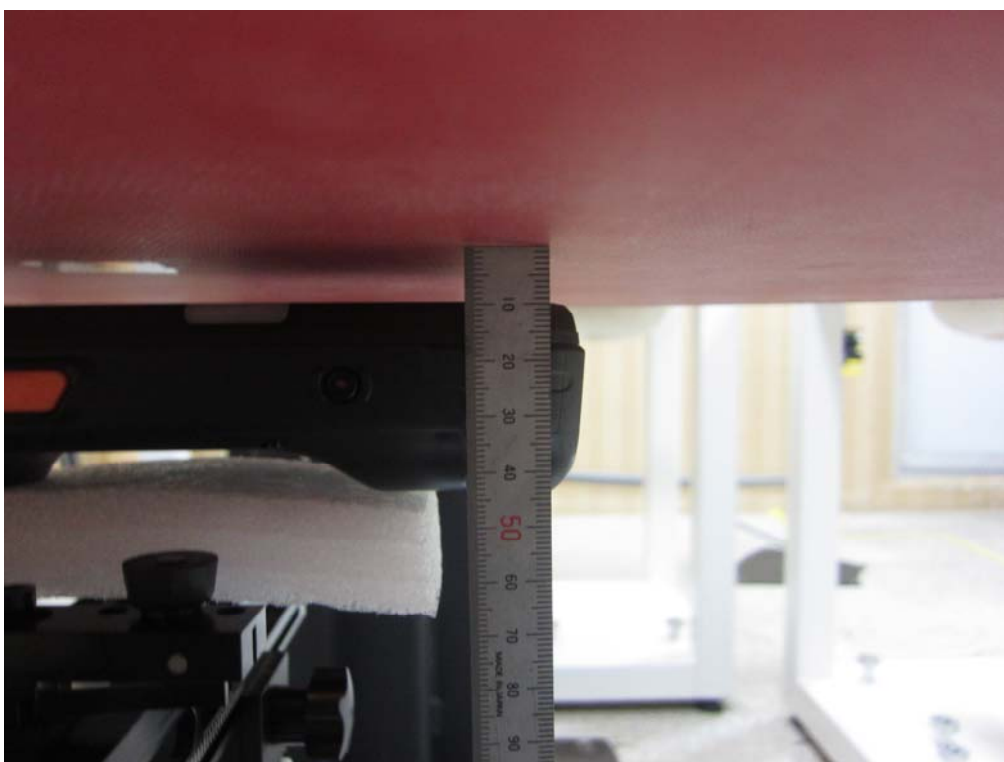


Note: The liquid depth is maintained at a minimum depth of 15 cm to minimize reflections from the upper surface.

■ Test Setup Photo (Head SAR Test Photo)



■ Test Setup Photo



■ Test Setup Photo (Body-Worn SAR Test Photo)



■ Test Setup Photo (Rear) with hand strap



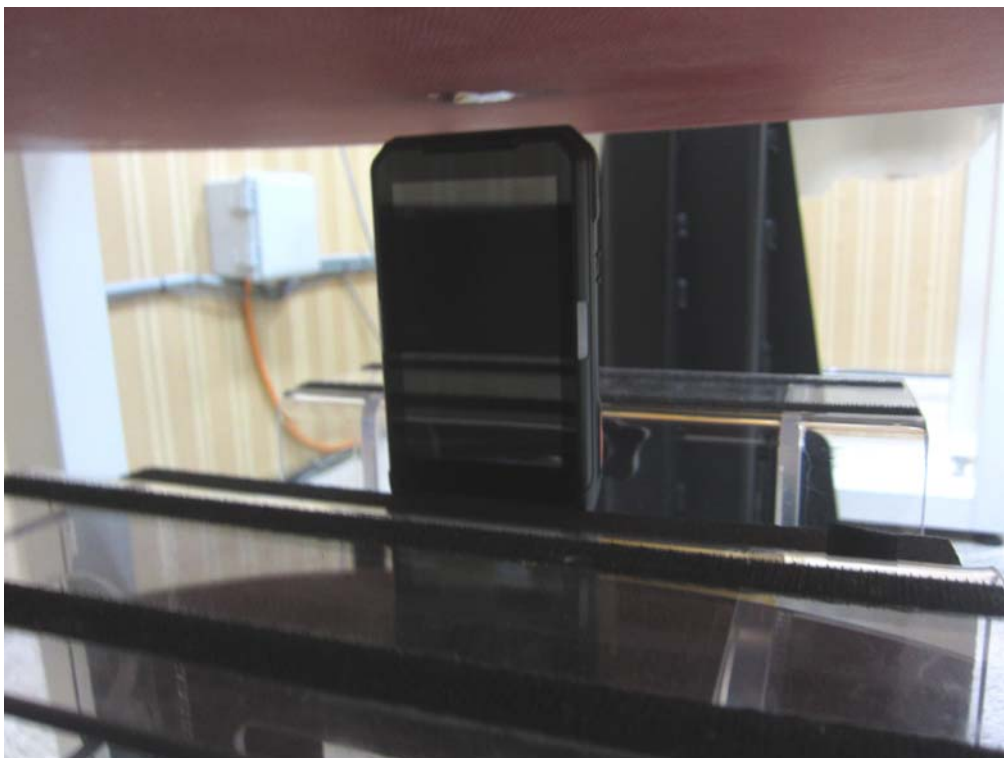
■ Test Setup Photo (Hotspot SAR Test Photo) (1)



■ Test Setup Photo (Hotspot SAR Test Photo) (2)



■ Test Setup Photo (Top)



■ Test Setup Photo (Bottom)



■ Test Setup Photo (Bottom) with hand strap



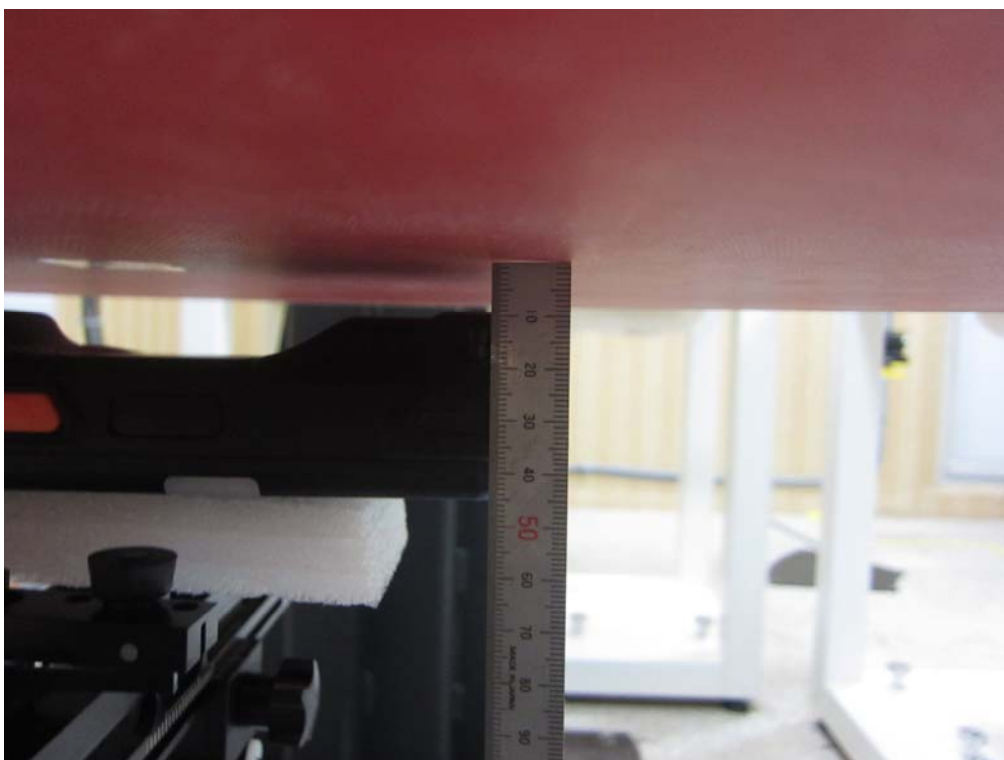
■ Test Setup Photo (Front)



■ Test Setup Photo (Front) with hand strap



■ Test Setup Photo (Rear)



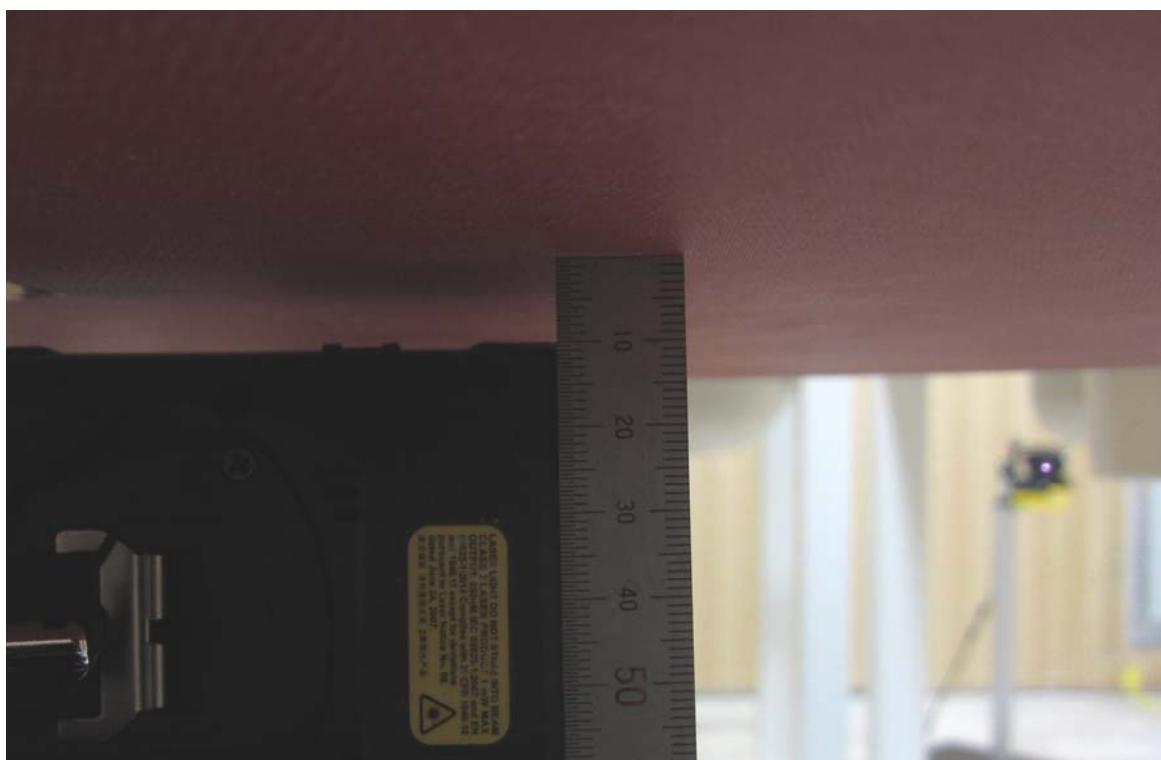
■ Test Setup Photo (Rear) with hand strap



■ Test Setup Photo (Right)



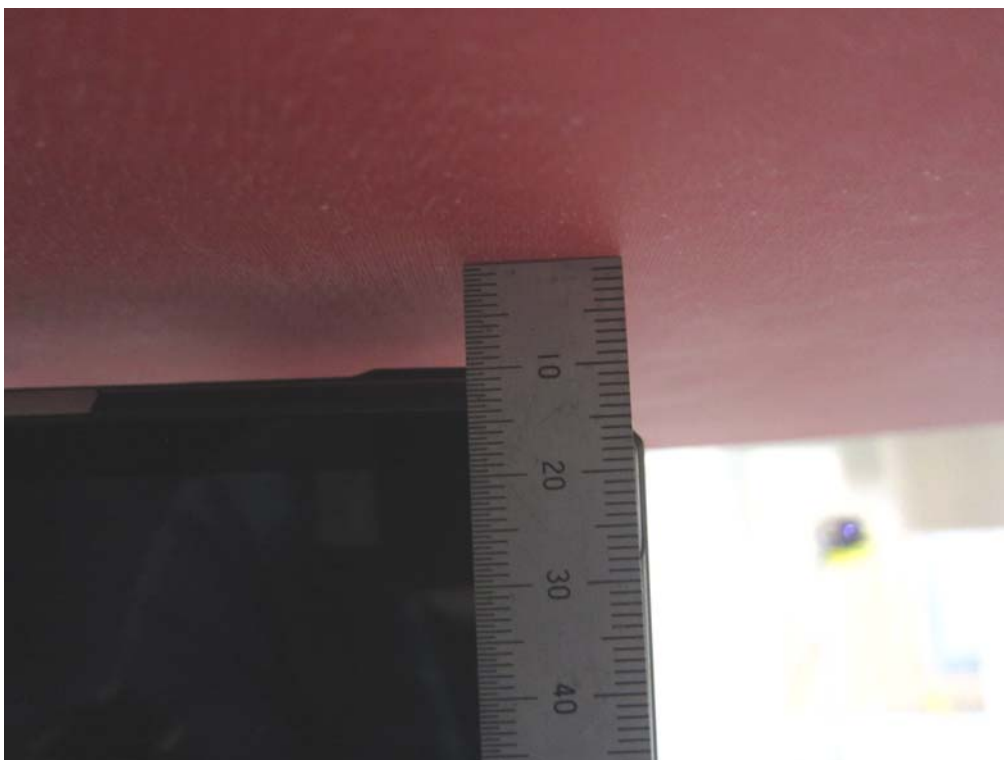
■ Test Setup Photo (Right) with hand strap



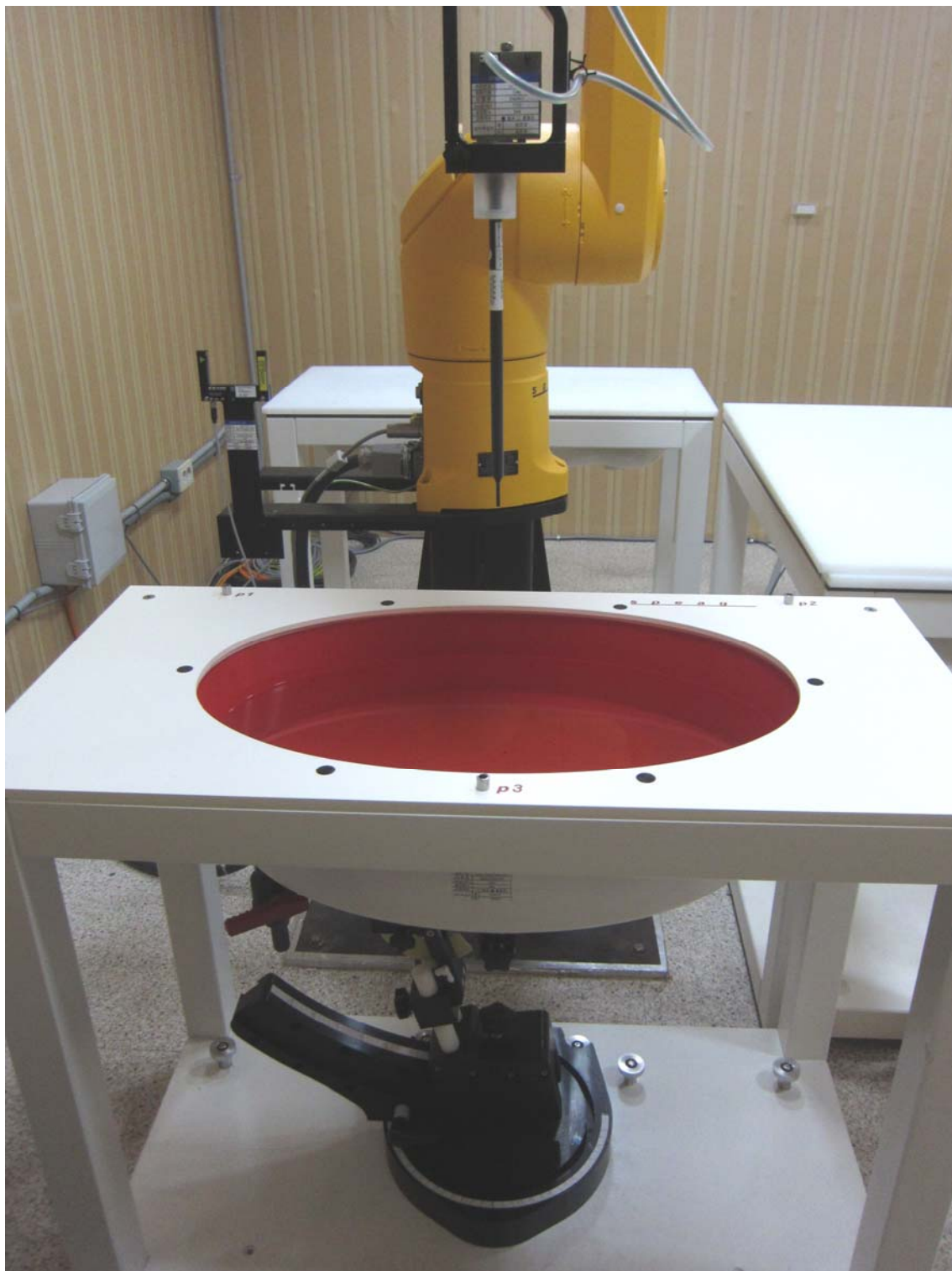
■ Test Setup Photo (Left)



■ Test Setup Photo (Left) with hand strap



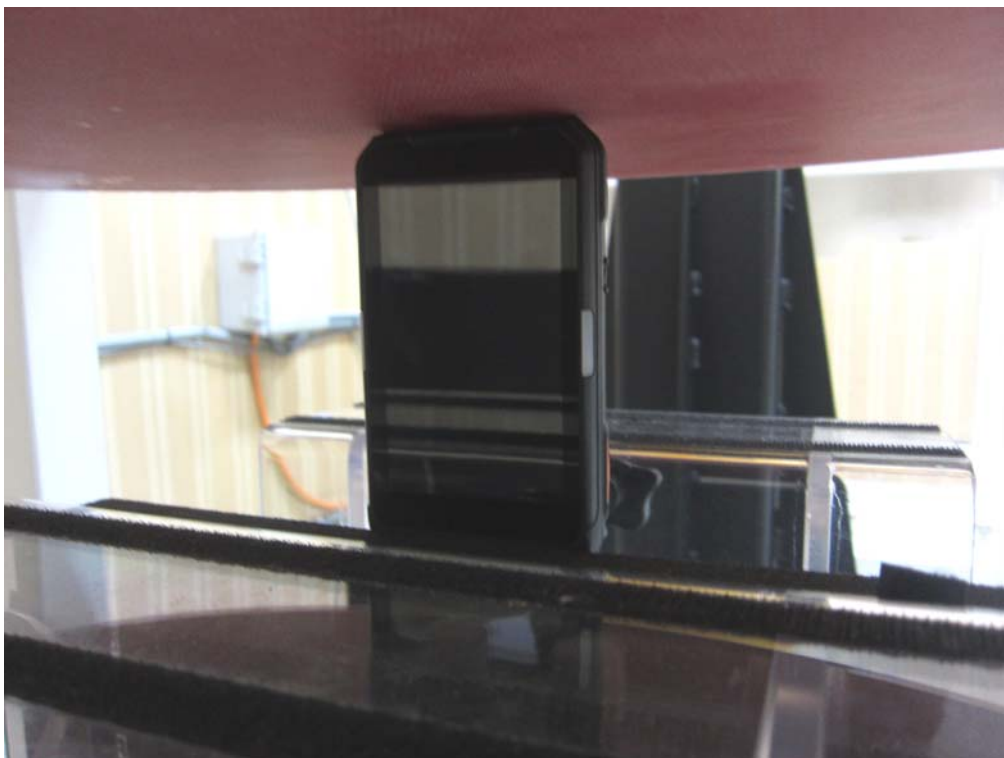
■ Test Setup Photo (Phablet SAR Test Photo)



■ Test Setup Photo (Hotspot SAR Test Photo) (2)



■ Test Setup Photo (Top)



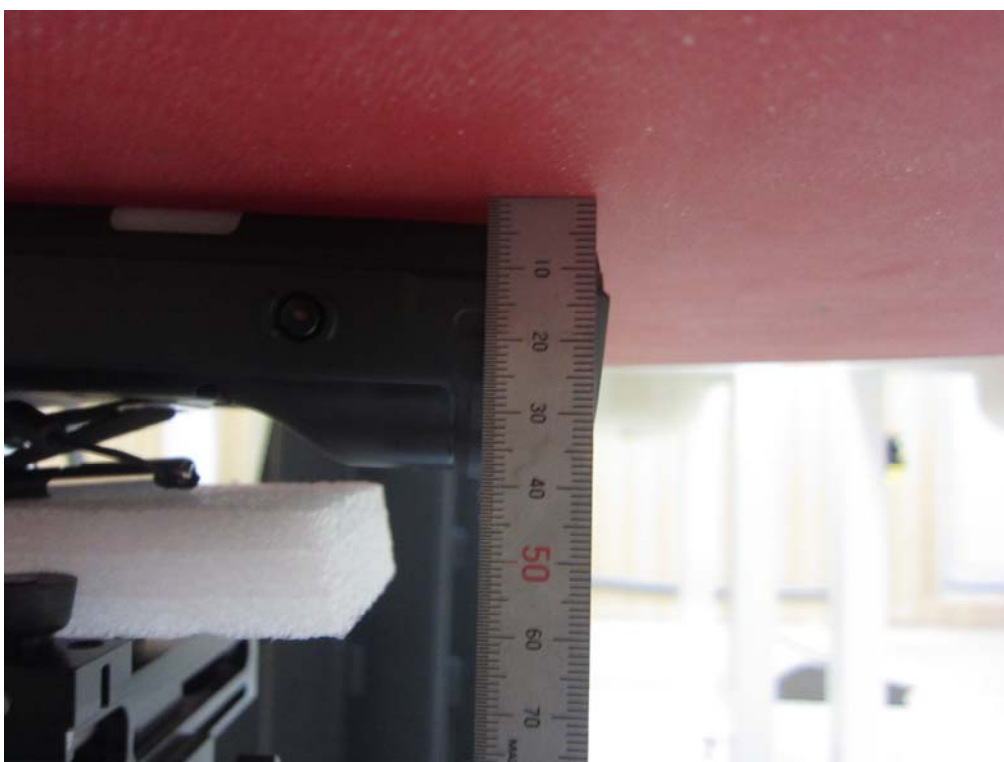
■ Test Setup Photo (Bottom)



■ Test Setup Photo (Front)



■ Test Setup Photo (Front) with hand strap



■ Test Setup Photo (Rear)



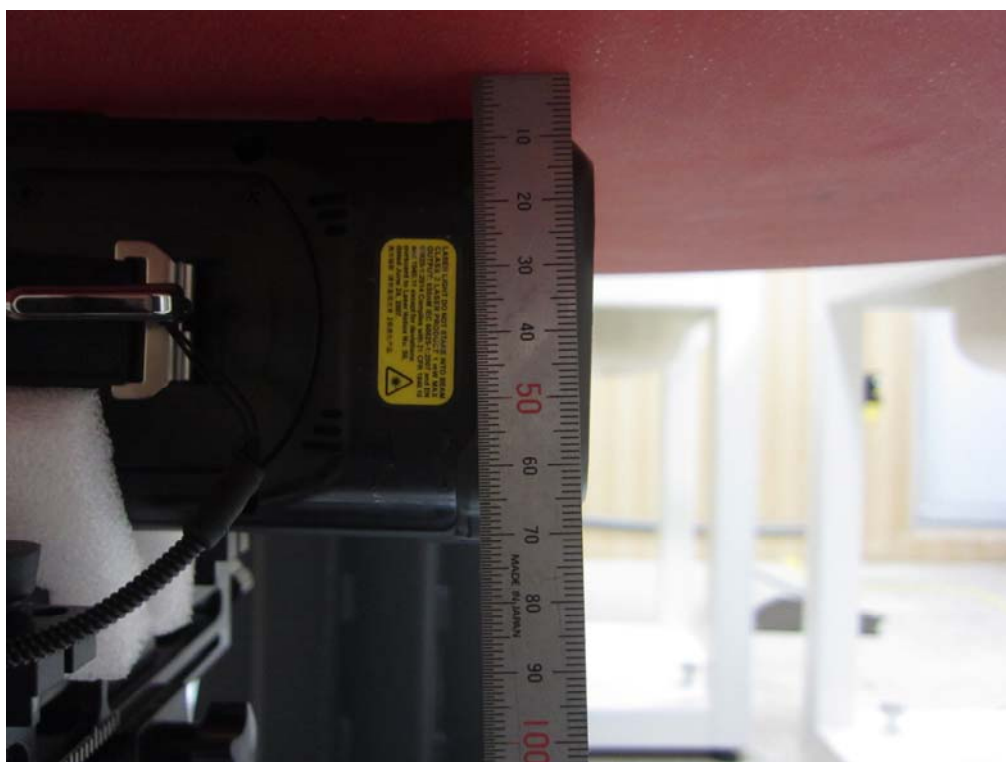
■ Test Setup Photo (Rear) with hand strap



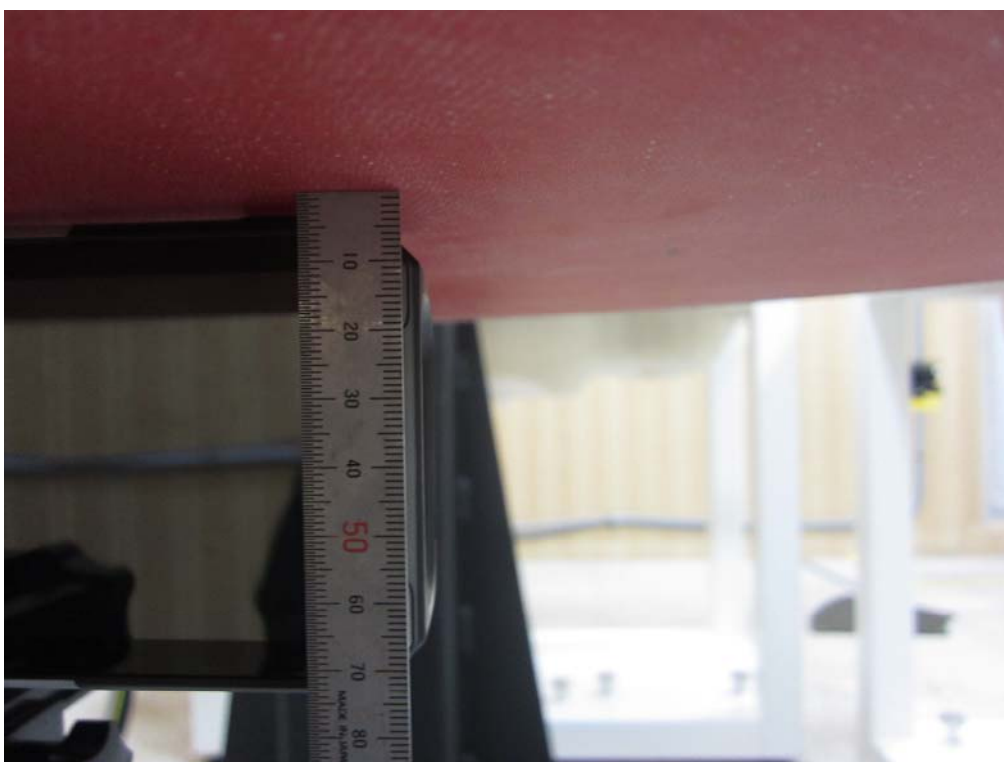
■ Test Setup Photo (Right)



■ Test Setup Photo (Right) with hand strap



■ Test Setup Photo (Left)



■ Test Setup Photo (Left) with hand strap

