

<h1>Approval Sheet</h1>	Part	Mechanical Part	Electrical Part	Approval
	Division			
	Part Number		SB0504T0A	
	Model Number		PM150	
	Manufacturing Code			

NO.	Contents	Page
	1. Revision History	
	2. Technical Specifications	
	2.1 General Features	
	2.2 Electrical Specifications	
	2.3 Mechanical Specifications	
	2.4 Packing Specifications	
	2.5 Reliability Specifications	
	3. Mechanical Drawings	
	4. Measurement Data	
	4.1 Matching Circuit	
	4.2 VSWR & Smith Chart	
	4.3 Radiation Pattern	

1. Revision History

NO.	Before	After	Reason	Date
1				
2				
3				
4				
5				
6				
7				
8				
9				
10				
11				
12				
13				
14				
15				

MODEL

PM150

Rev.

1.0

Page

2

2. Technical Specifications

2.1 General Features

MODEL NUMBER	SB0504T0A
Ass'y Type	Manual Soldering
APPLICATIONS	2.4GHz BLUETOOTH

2.2 Electrical Specifications

Frequency Range		2400 ~ 2480 MHz	
IMPEDANCE		50 Ω	
V.S.W.R	1st	2400MHz	2480MHz
		2.5:1	2.5:1
RADIATION PATTERN		Omni-directional	
POLARIZATION		Vertical/Linear	

Approval Sheet		SB0504T0A			
MODEL	PM150	Rev.	1.0	Page	3

2.3 Mechanical Specifications

Dimensions	13.5 x 12.0 x 2.0T
Operating Temperature	-30 °C ~ + 80 °C
Mounting Type	Manual Soldering
Operation Humidity	10 ~ 90 (%)
Weight	0.5g

2.4 Packing Specifications

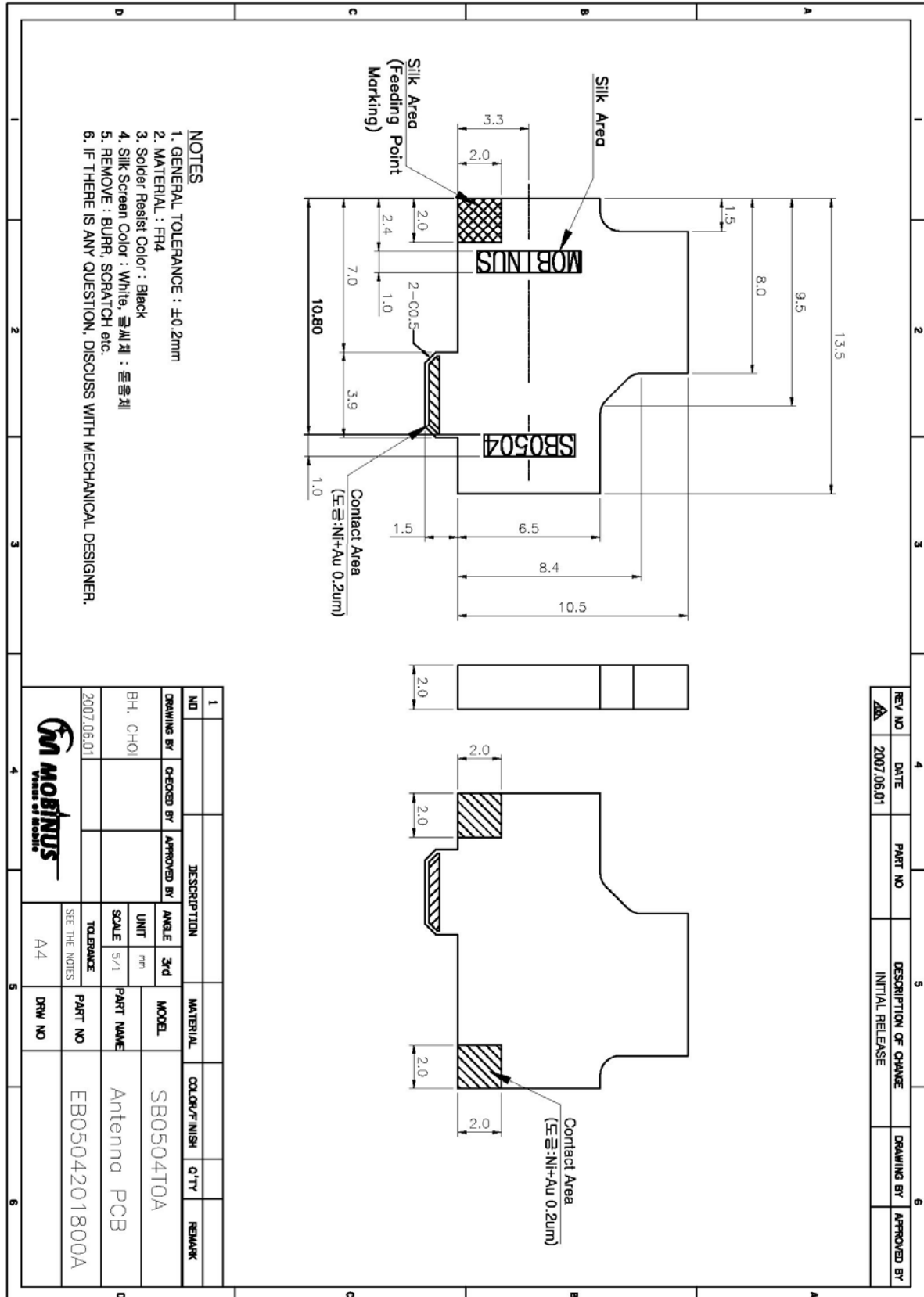
Item	Quantity	Materials	Note
BULK	1,000EA	PP	
CARTON BOX	EA	Double Wall Paper	

2.5 Reliability Specifications

- Standard Temperature Range: IEC Specifications

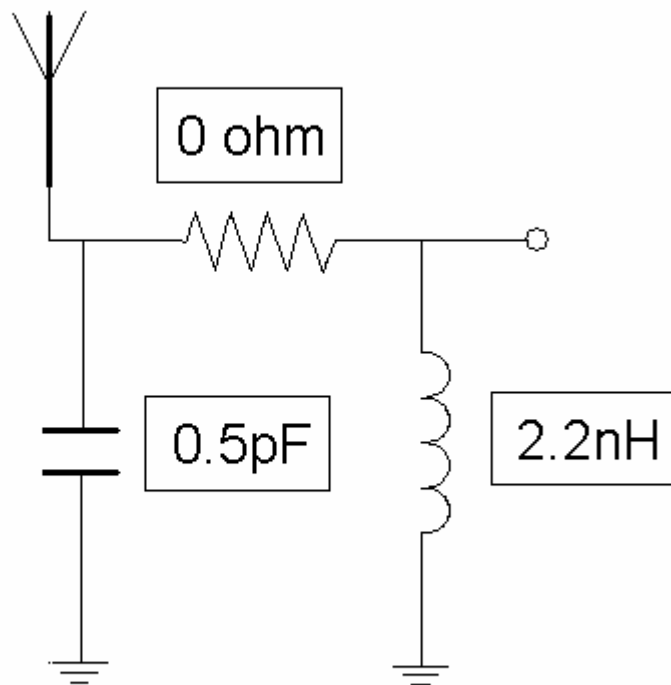
No	Item	Conditions and Method
1	Temperature Shock	<ul style="list-style-type: none"> ● Perform 10 cycles as follow <ul style="list-style-type: none"> ■ High Temp.: 30min, + 85°C ■ Low Temp.: 30min, -40°C ■ Repeat : 10 times ● Stabilize at room temperature for measurement
2	Dry Heat Test	<ul style="list-style-type: none"> ● Dwell in + 85°C chamber for 72 hours ● Stabilize at room temperature for measurement
3	Low Temperature Test	<ul style="list-style-type: none"> ● Dwell in -40°C chamber for 72 hours ● Stabilize at room temperature for measurement
4	Humidity Test	<ul style="list-style-type: none"> ● Dwell in test chamber at + 50C and 95% RH for 24 hours ● Stabilize at room temperature for measurement
5	Drop Test	<ul style="list-style-type: none"> ● Conditions <ul style="list-style-type: none"> ■ Drop height: 1.5 m ■ Drop angle: 45 °/ 90 ° ■ Drop cycle : Each 5 times ■ Weight : 150 g
6	Salt Spray Test	<ul style="list-style-type: none"> ● After exposing to 5% sodium atmosphere at + 35° C for 72 hours and washing pure water, test within 2 hours

3. Mechanical Drawings



4 Measurement DATA

4.1 Matching Circuit



4.2 VSWR & Smith Chart

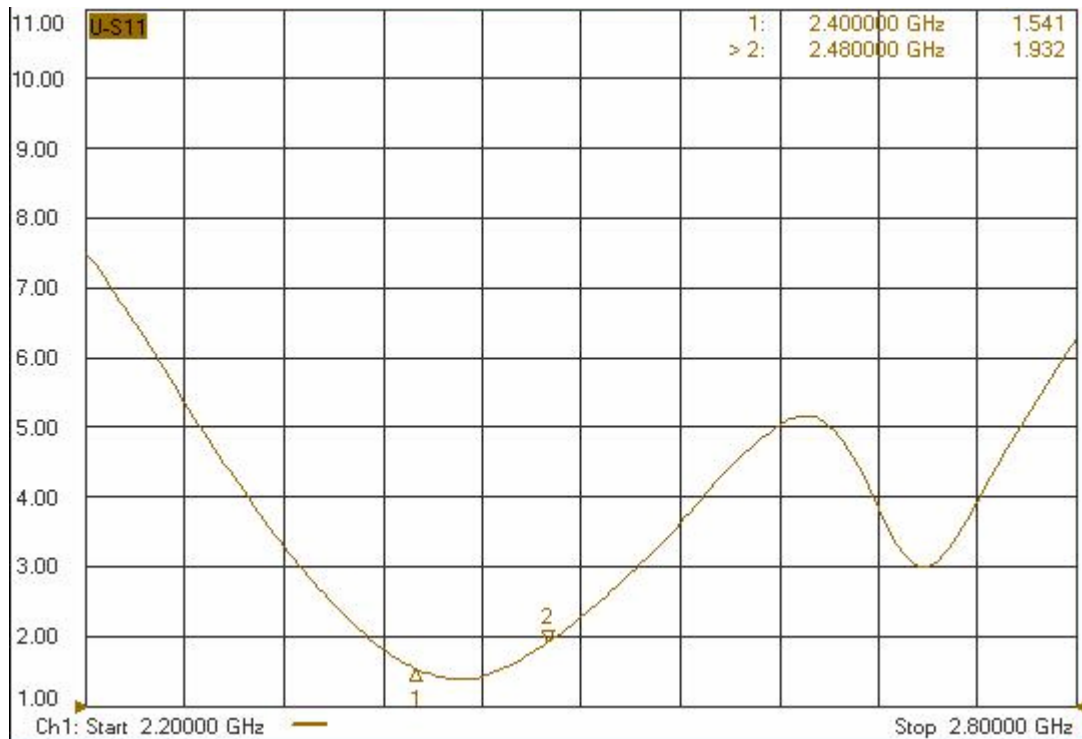


Figure 3 VSWR

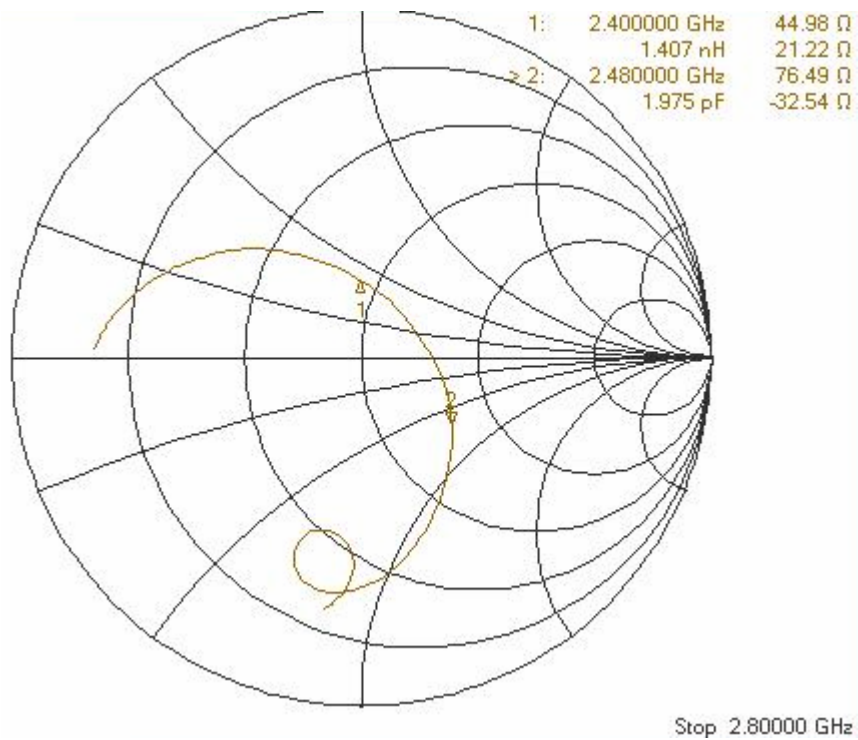


Figure 4 SMITH CHART

4.3 Test Environment and Radiation Pattern

4.3.1 Test System

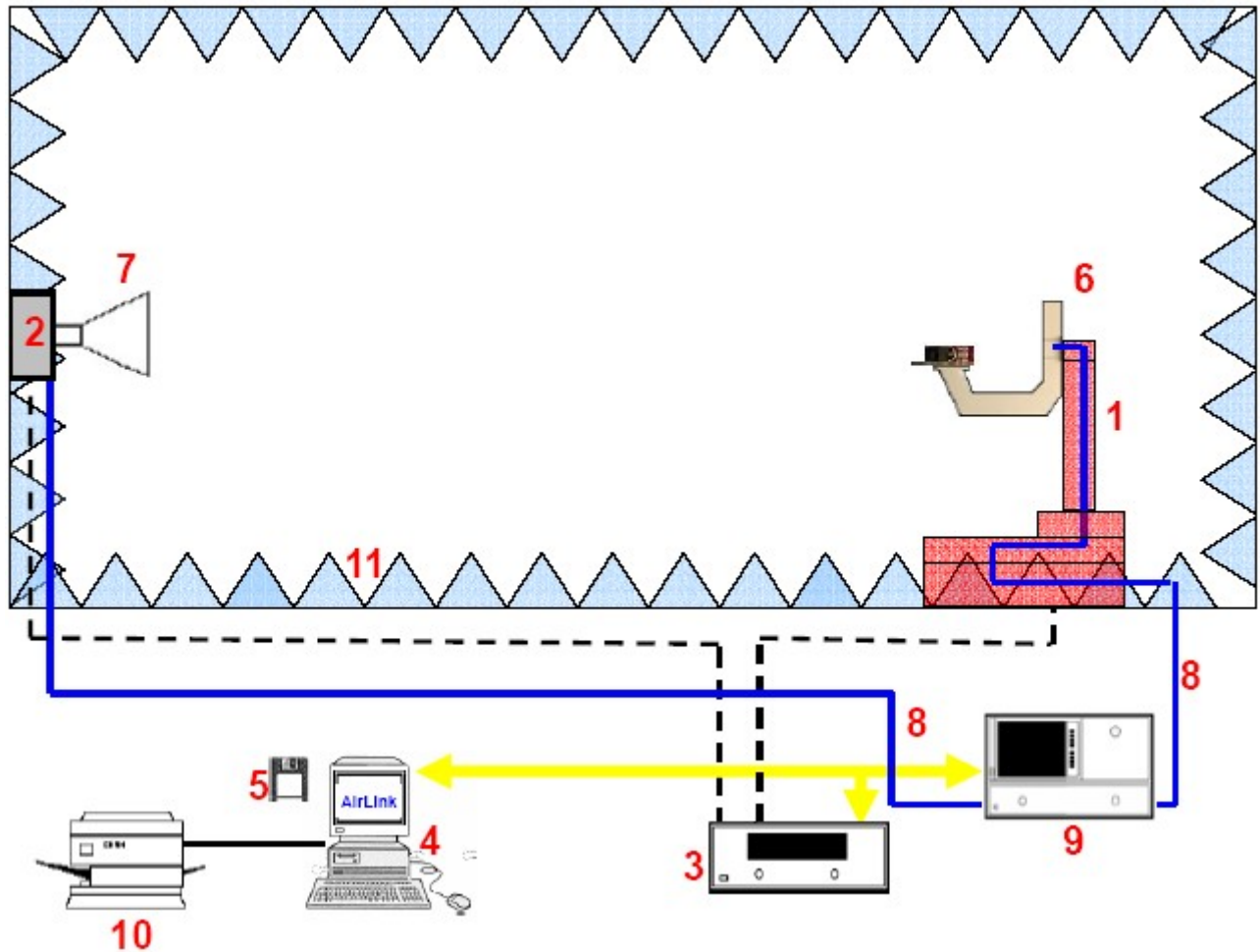
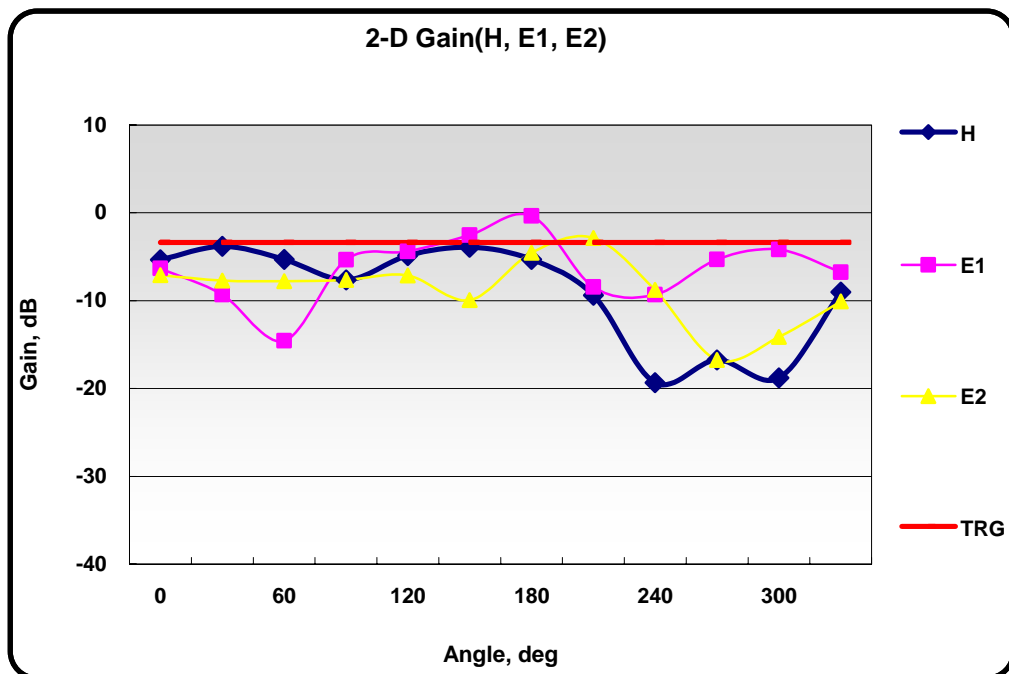
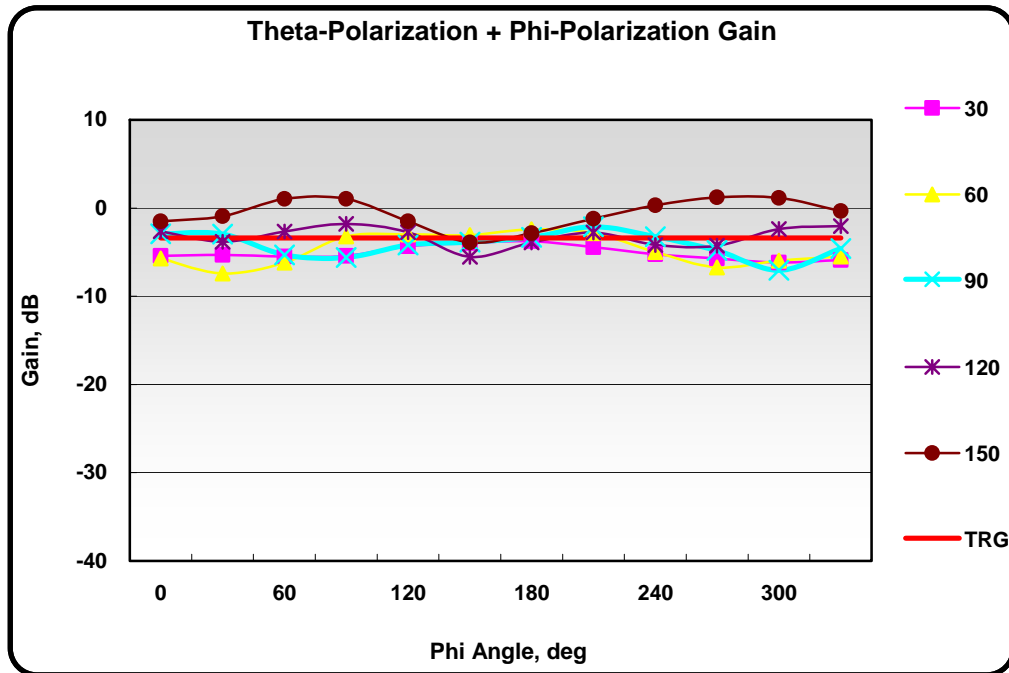


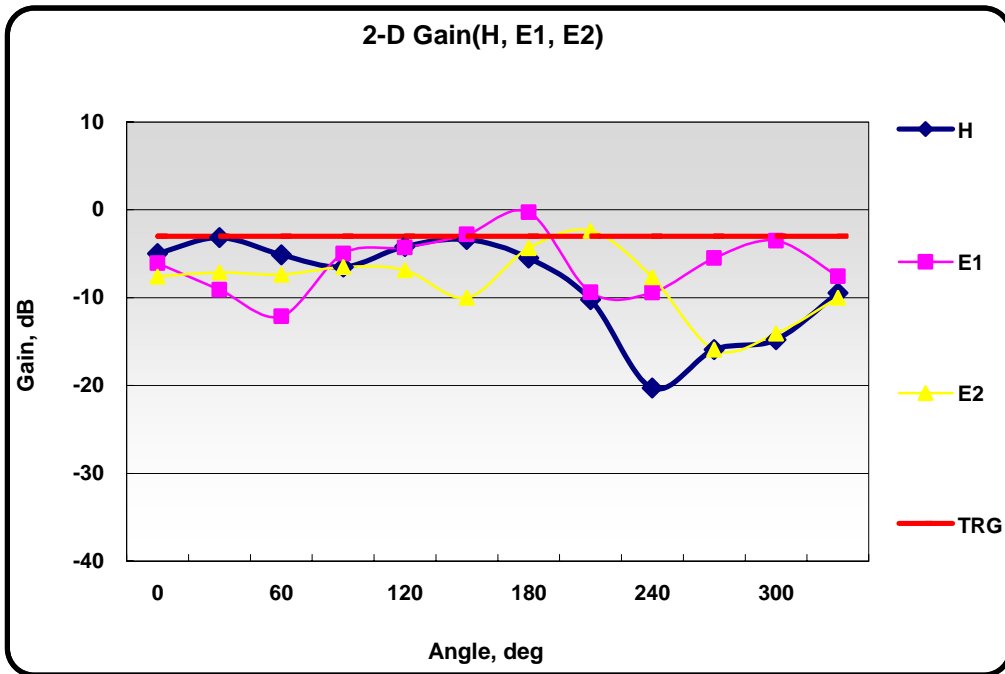
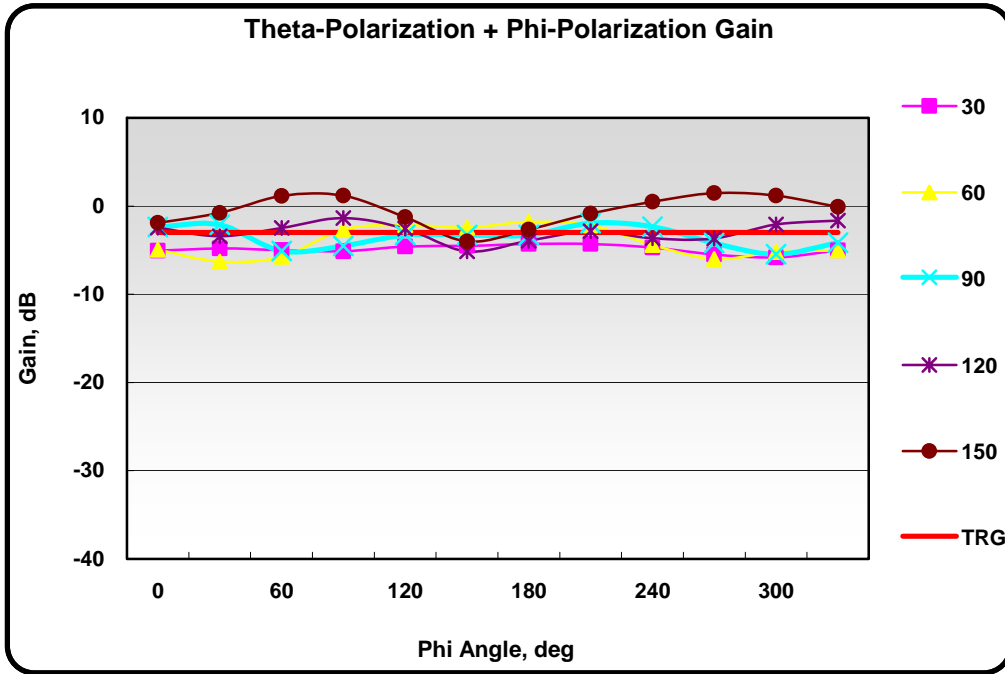
Figure 5 Test System

01. Azimuth
02. Polarization Rotator
03. Rotator Controller
04. System Controller
05. ANT Passive (Antenna Pattern) Measurement Software
06. Bracket
07. Diagonal Dual Polarized Horn Antenna
08. Low Loss Coaxial Cable
09. Network Analyzer
10. Printer
11. Absorber & Others (Shielding, VSWR Testing and etc.)

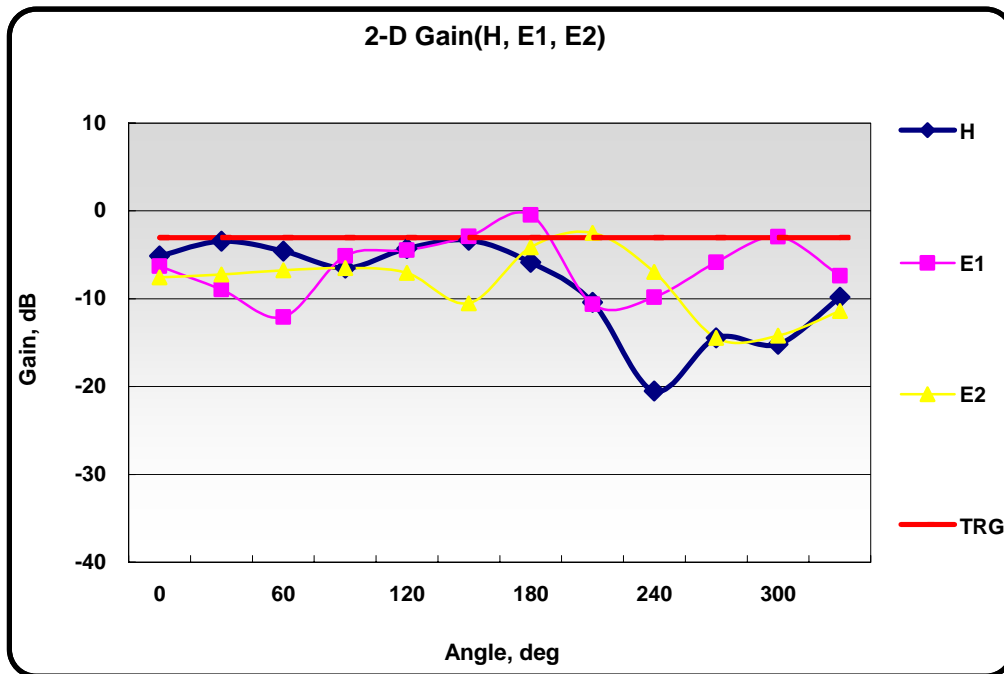
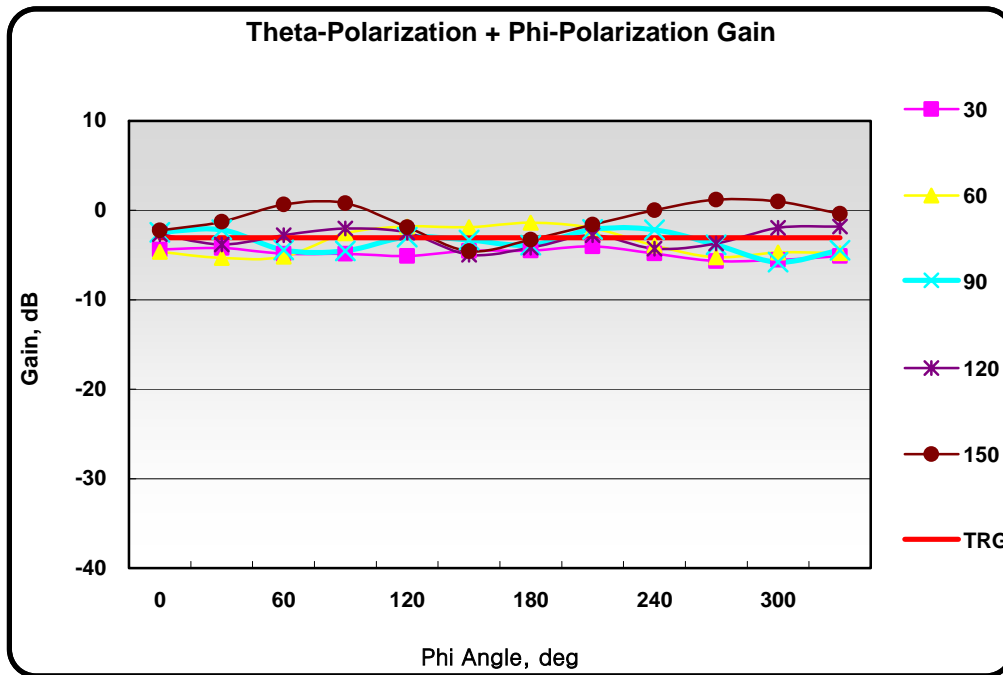
Accessories Amplifier, Coaxial Adapters and GPIB Cables



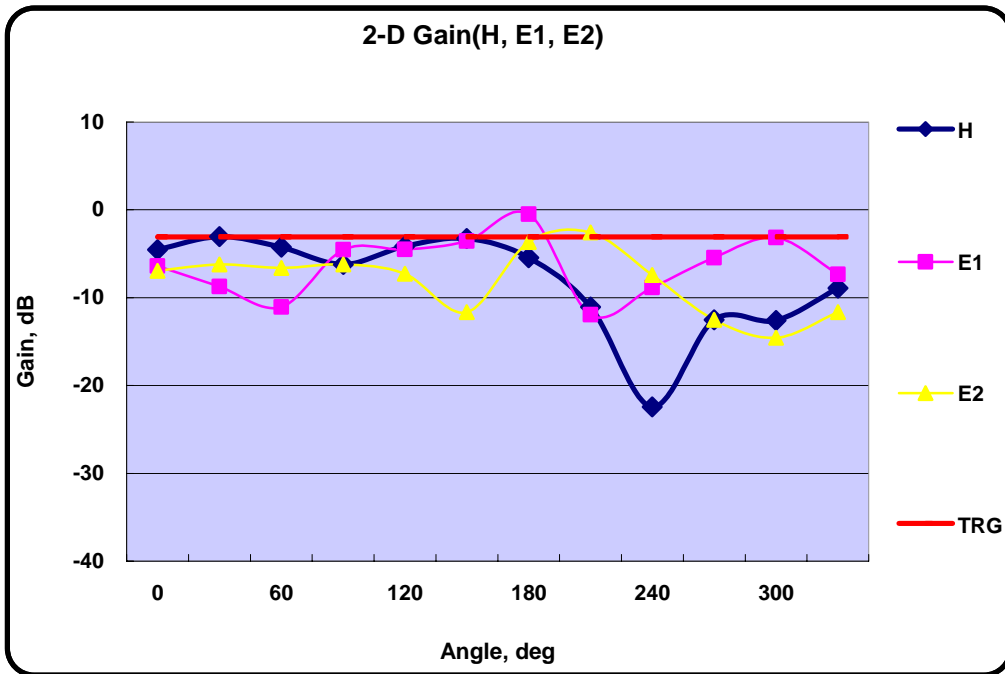
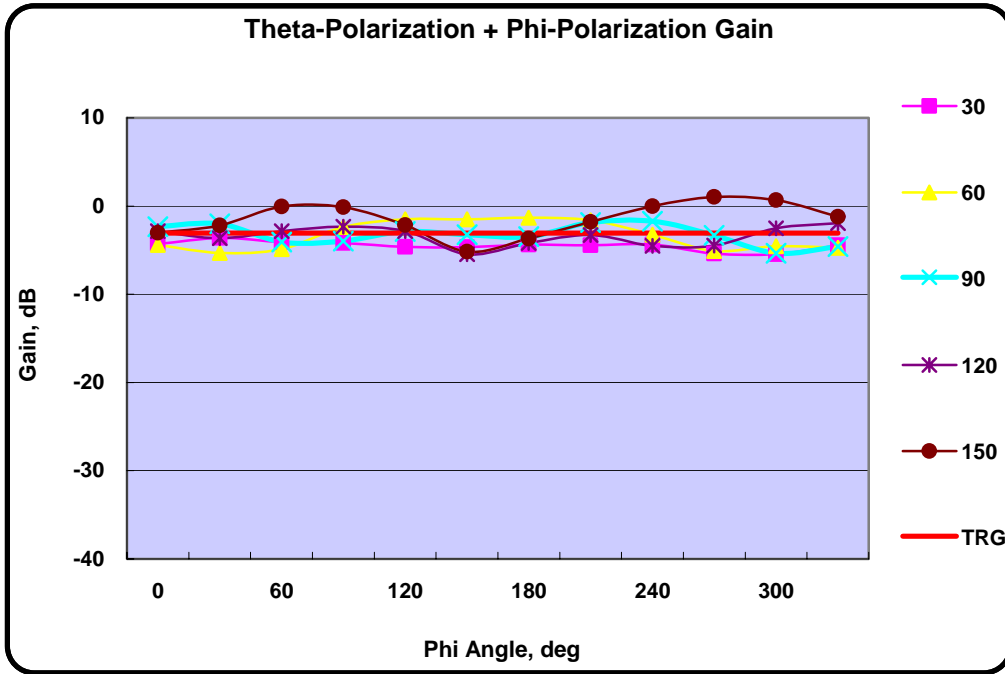
2400 MHz



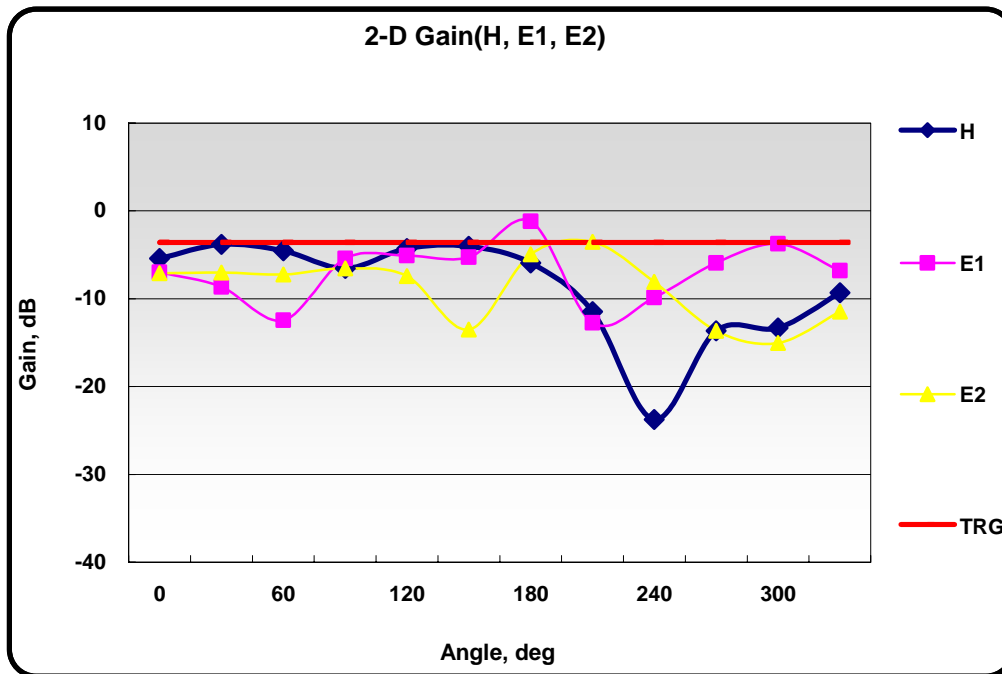
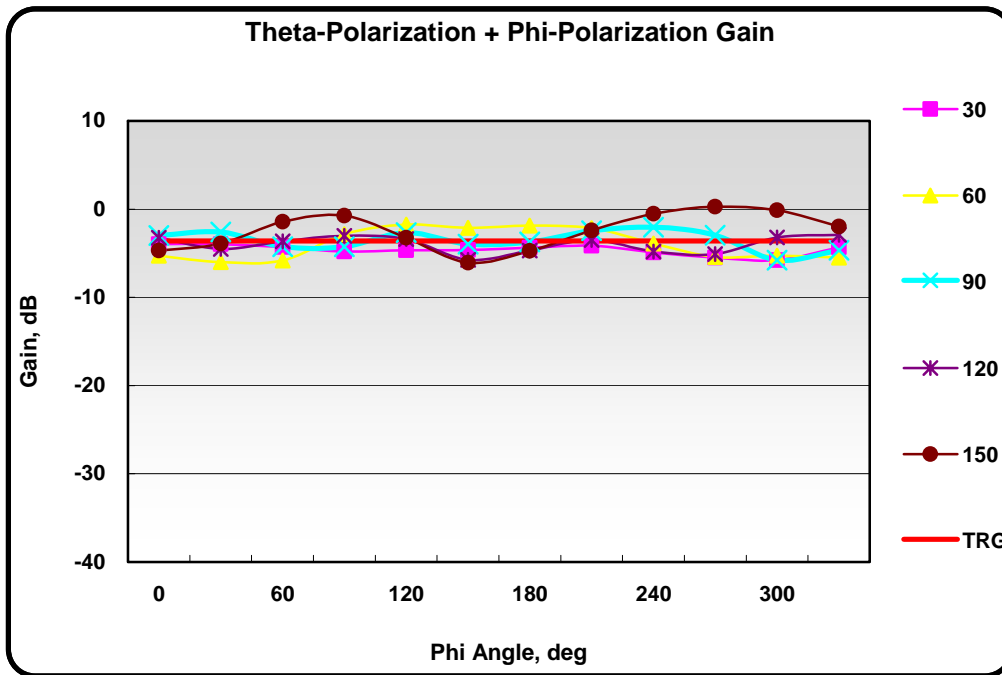
2420 MHz



2440 MHz



2460 MHz



2480 MHz