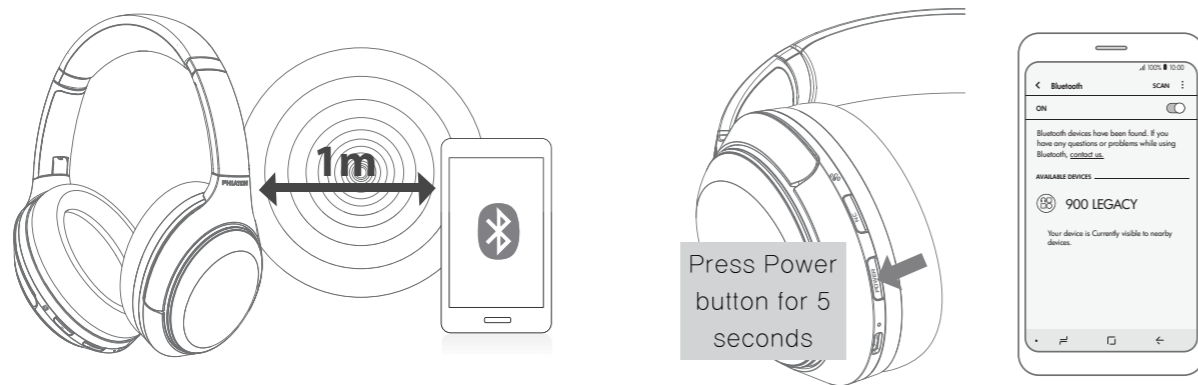


5. PAIRING WITH A 'BLUETOOTH DEVICE'



1) Pairing

- Turn on the Bluetooth feature with the 'Bluetooth Device' you want to connect with the 900 LEGACY.
- Place the 900 LEGACY within 3 feet of the 'Bluetooth Device' you want to connect.
- Press and hold the POWER Button for over 5 seconds with the 900 LEGACY power on to enter Pairing Mode. Pairing mode will start once the power is turned on for the first time after purchase.

Status	LED Indicator	Voice Guidance
Pairing Mode	Blue and Red light alternately blinks	Pairing Mode activated

- Within the 'Bluetooth Device' you want to connect, search/select '900 LEGACY'.

※ If the 'Bluetooth Device' requires a PIN CODE or password, enter '0000'.

- Use the headphones to play music or connect a call.

Operation	LED Indicator	Voice Guidance
Connection success	After Purple light blinks twice, Blue light blinks once in 6 second intervals	Device connected

2) Re-connecting a Disconnected Device

① Auto Connection

- Once the device has been paired with a 'Bluetooth Device' it will automatically be connected to a previously connected device once the 900 LEGACY power is turned on.
- If Bluetooth becomes disconnected as the discover range between the 'Bluetooth Device' and the 900 LEGACY is exceeded, then Bluetooth will not be automatically re-connected. When you are back within the discover range (33 feet), you must then connect manually.

② Manual Connection

- When having entered 'Connection Waiting Mode' during connection.
- Press the POWER Button the headphone to connect.
- The 900 LEGACY will also be connected if you select '900 LEGACY' from the device search list within your 'Bluetooth Device'.

3) Checkpoints Upon Pairing

- Check to see whether the Bluetooth feature is activated within the 'Bluetooth Device' you want to connect.
- When selecting the connection device, connect by selecting stereo headset device. Music cannot be played when connected through mono headset.

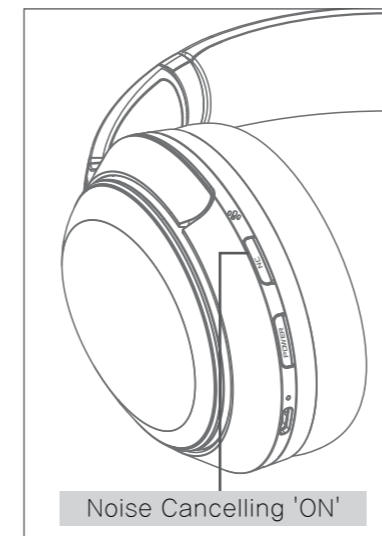
※ In order to properly use the Bluetooth feature of this device, the profile (A2DP, HSP, HFP and AVRCP) of the 'Bluetooth Device' you are trying to connect must support the profile of this device.

* A2DP—"Advanced Audio Distribution Profile", HSP—"Headset Profile", HFP—"Hands Free Profile",

AVRCP—"Audio/Video Remote Control Profile"

※ The device will not operate properly if the profiles are not supported equally. Even when the profiles are supported equally, some features may not properly operate depending on the 'Bluetooth Device' specifications. To check the detail specifications of this headphone's profile, refer to '14. SPECIFICATIONS'. For more information, please visit phiaton.com or contact Phiaton customer service.

6. Noise Cancelling Function



1) What is 'Noise Cancelling'?

- Noise Cancelling refers to a technology that reduces noise from mid/low pitched sounds under 1kHz

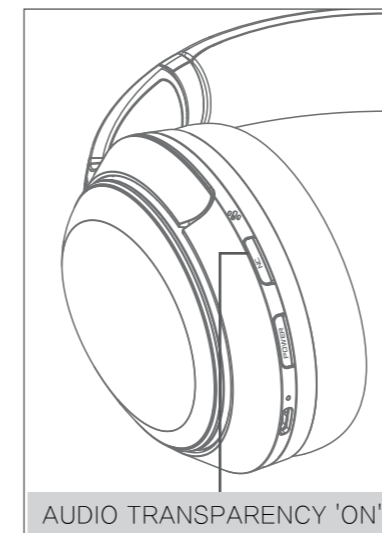
2) Turning Noise Cancelling Feature ON/OFF

- When power on the headphone, Noise cancelling function is on automatically. (Green LED lights) In pairing mode, the green LED does not turn on and only a voice message appears, and the green LED does not turn on automatically until it is connected to the phone.
- Pressing the NC button activates the noise cancelling function (Green LED turn on), press again, the function is stopped.

3) Cautions regards to the Noise Cancelling function

- Noise Cancelling function cannot be used when the battery is completely discharged.
- Use while driving or walking will prevent outside Noise, such as signals or alarms, from being heard and may be dangerous to yourself and others. Heed caution during use.
- Noise Cancelling is optimized for mechanical noises from airplanes, buses, and subway trains and is not required for use within quiet interior environments.

7. AUDIO TRANSPARENCY



- 1) The AUDIO TRANSPARENCY feature allows you to mute your music and noise cancelling temporarily, so you can hear the surrounding sounds without removing the headphone.
- 2) When the AUDIO TRANSPARENCY is activated, the noise canceling function is stopped and external sounds can be heard.
- 3) When the NC button is pressed while the noise cancelling function is running, the AUDIO TRANSPARENCY is activated. Press again to stop the AUDIO – TRANSPARENCY.